

V&V Reference Report

L2 ASCDS Version : 8.4.5

Observation 15596 - L2 Version 2
Chandra X-Ray Center

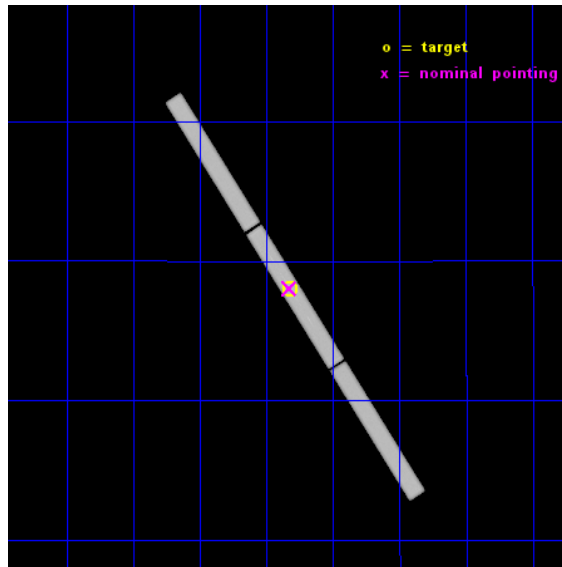
L2 Processing Date : Nov 29 2014

Contents

1	Front	2
2	OBI	3
2.1	OBI	3
2.1.1	Images	3
2.1.2	Parameters	4
2.1.3	Events	4
2.2	Compared Parameters	5
2.3	Aspect	6
2.4	Star Slots	9
2.4.1	Slot 3	9
2.4.2	Slot 4	10
2.4.3	Slot 5	11
2.4.4	Slot 6	12
2.4.5	Slot 7	13
2.5	FID Slots	14
2.5.1	Slot 0	14
2.5.2	Slot 1	15
2.5.3	Slot 2	16
3	Gratings	17
3.1	LETG Arm	17
A	Summary	19
A.1	Status	19
A.2	Comments	19

1 Front

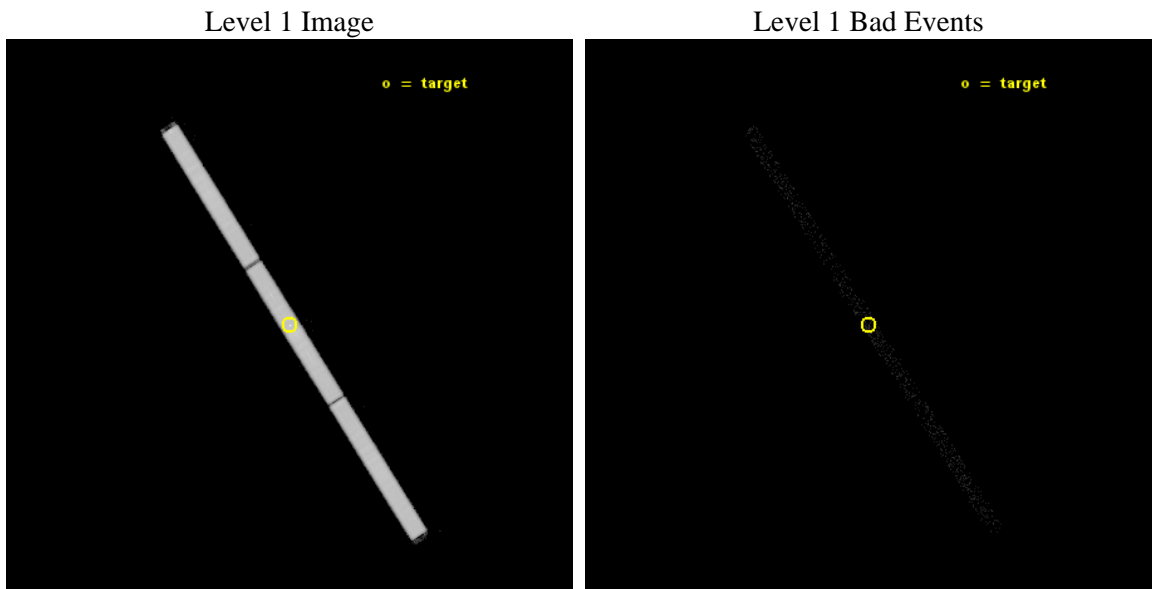
seq_num	300317	Sequence number
obs_id	15596	Observation id
title	Nova Mon 2012 as a luminous supersoft X-ray source	Proposal title
observer	Dr Marina Orio	Principal investigator
object	Nova Mon 2012	Source name
ra_targ	99.91125	Observer's specified target RA [deg]
dec_targ	5.897778	Observer's specified target Dec [deg]
ra_nom	99.913881123912	Nominal RA [deg]
dec_nom	5.9017875204313	Nominal Dec [deg]
roll_nom	57.275748994541	Nominal Roll [deg]
revision	2	Processing version of data
ontime	25119.932600796	[s]
livetime	24947.57395926	Ontime multiplied by DTCOR
l2events	1361307	Number of level 2 events



2 OBI

2.1 OBI

2.1.1 Images



2.1.2 Parameters

obi_num	0	Obi number	sched_exp_time	25000.000000	[s] Scheduled observation exposure time
ascdsver	10.3	Processing system revision	ontime	25119.932600796	[s]
caldsver	4.6.4	 	l1events	1970419	Number of level 1 events
date	2014-11-30T02:45:17	Date and time of file creation	tgmethod	TGDETECT	Method used to create src1a file
revision	2	Processing version of data	zo_pos	(32851.05, 32664.14)	src1a sky pixel position

2.1.3 Events

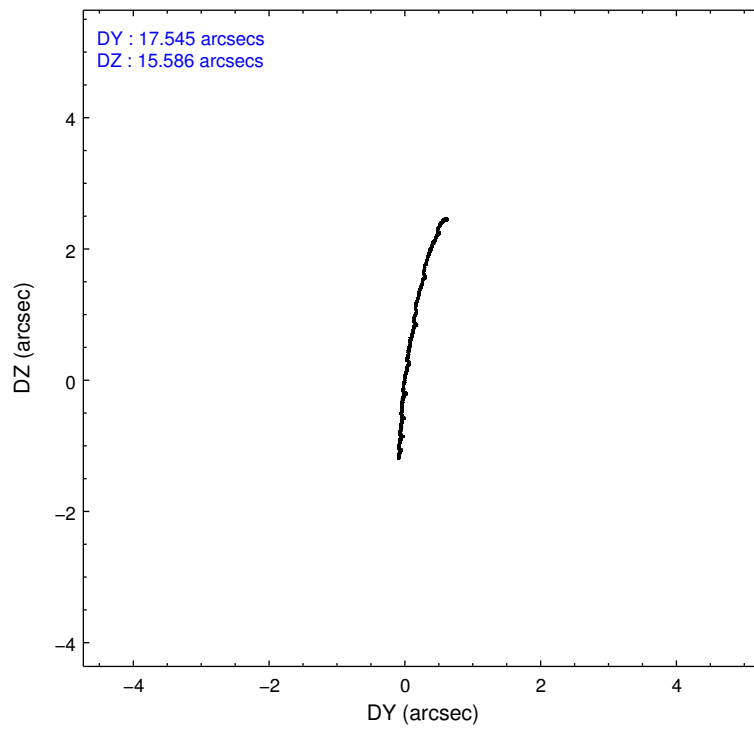
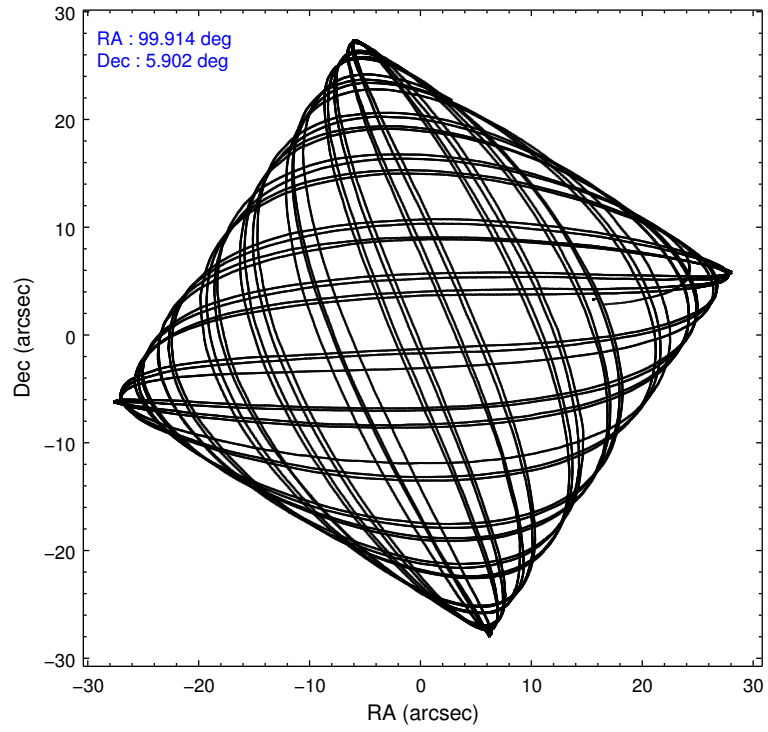
Level 1 Events

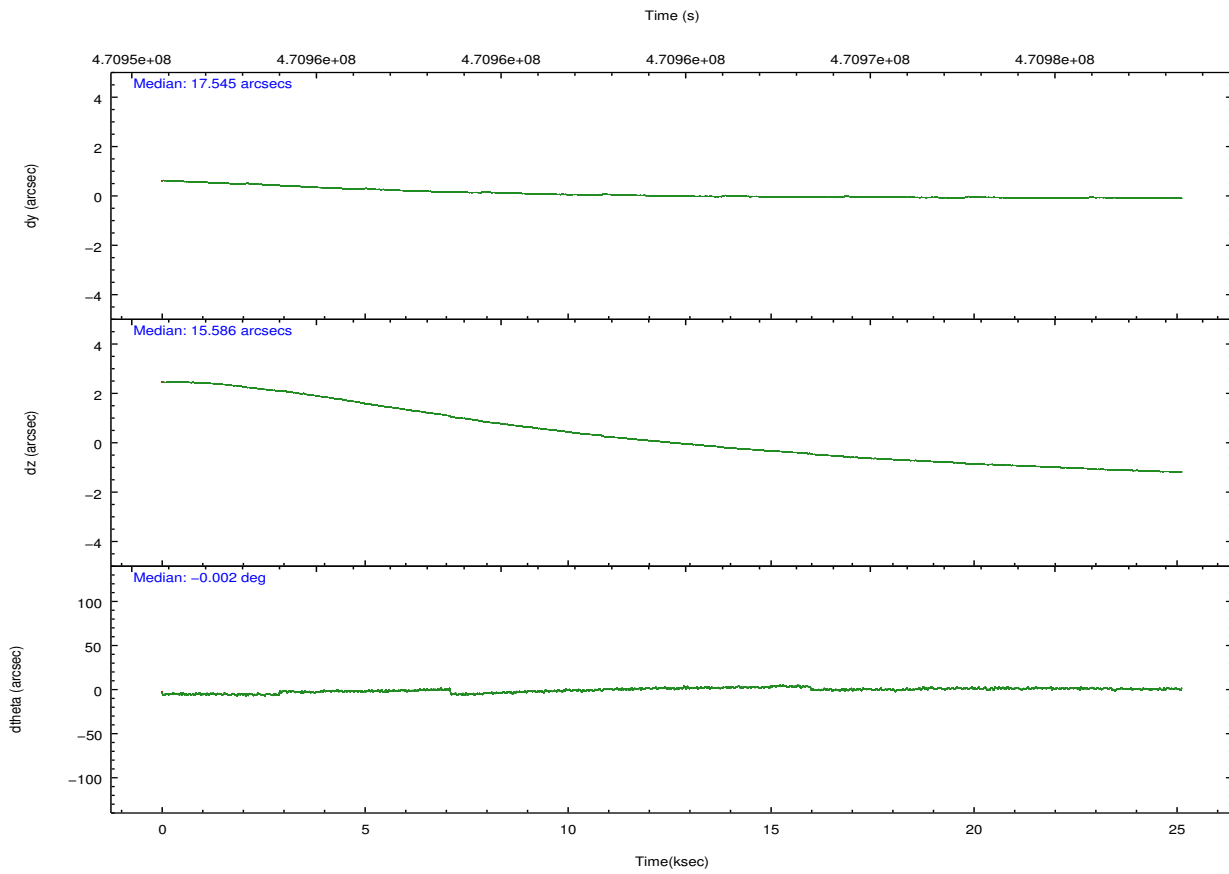
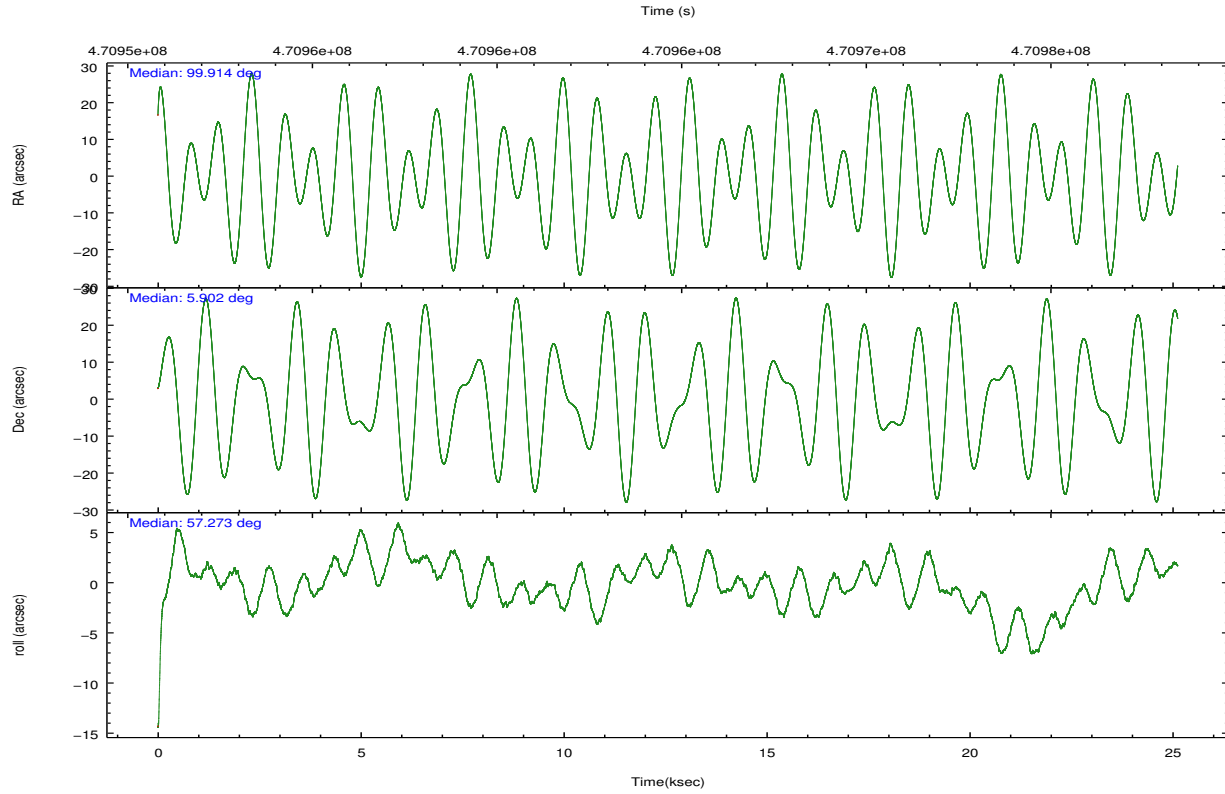
	segment 1	segment 2	segment 3
level 1 events	654512	652737	663170
rejected events	29587	29474	30011
rejected %	4%	4%	4%

2.2 Compared Parameters

Parameter	Planned	Actual	Parameter	Planned	Actual
Instrument	HRC	HRC	Obspar format version number	7	7
Detector	HRC-S	HRC-S	Obspar file type	PREDICTED	ACTUAL
Grating	LETG	LETG	Obspar update status	NONE	UPDATED
Data mode	OBSERVING	OBSERVING			
Observation mode	POINTING	POINTING			
[deg] Pointing RA	99.913963	99.91388112391226			
[deg] Pointing Dec	5.873039	5.901787520431312			
[deg] Pointing Roll	57.208415	57.27574899454064			
[mm] SIM focus pos	-1.429586	-1.428180813131781			
[mm] SIM defocus	0.1037507710433287	0.1051558262725154			
[mm] SIM translation stage pos	250.455976	250.466033080201			
[mm] SIM translation stage offset	0	-0.01005468664627074			
[s] Observation start time (MET)	470952179.184000	470950903.51015			
Observation start date	2012-12-03T20:01:52	2012-12-03T19:41:43			
[s] Observation end time (MET)	470977179.184000	470978041.92411			
Observation end date	2012-12-04T02:58:32	2012-12-04T03:14:01			

2.3 Aspect





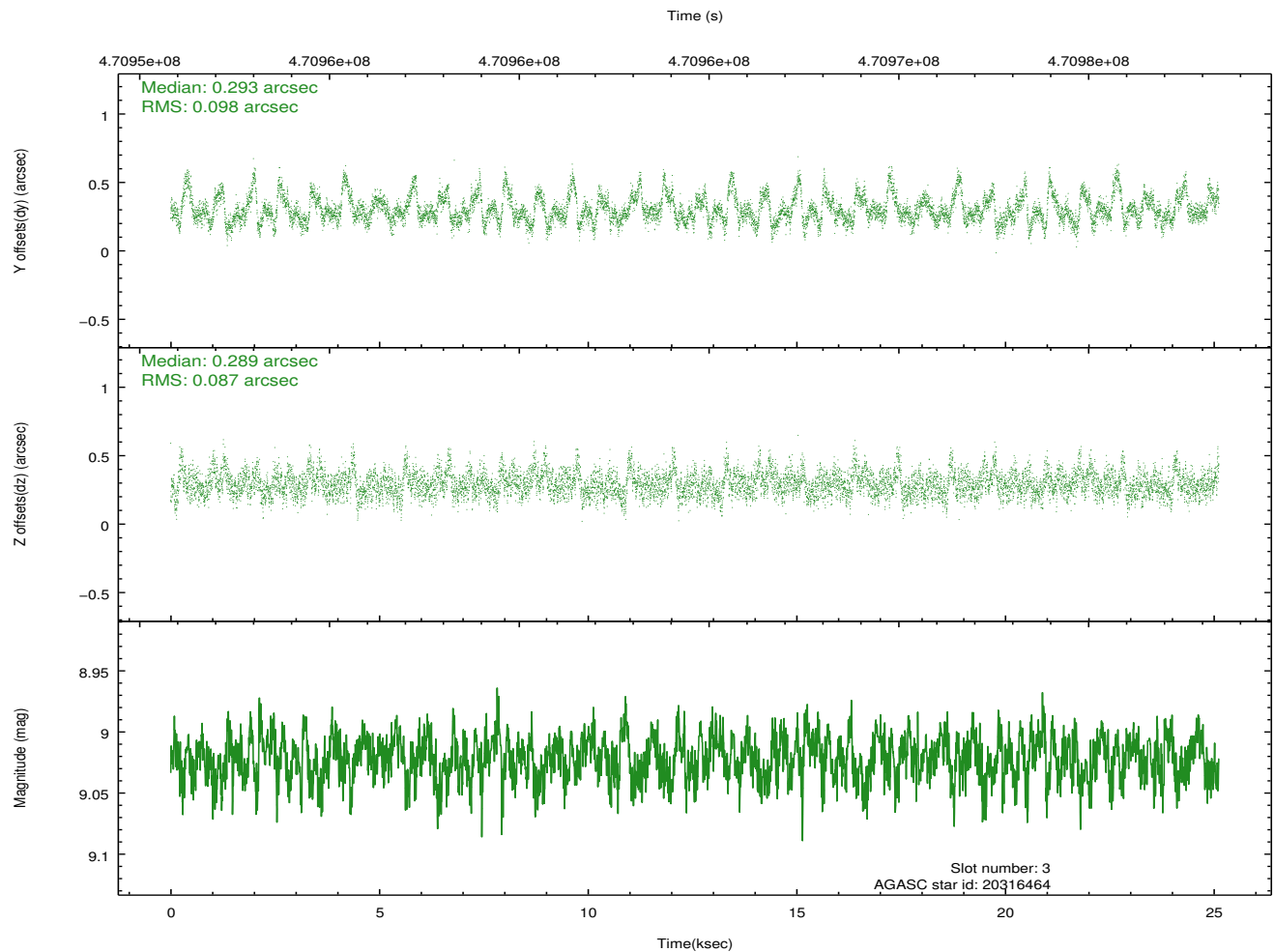
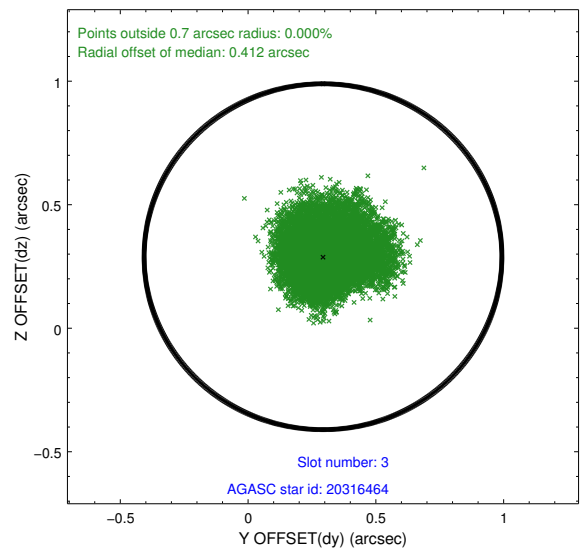
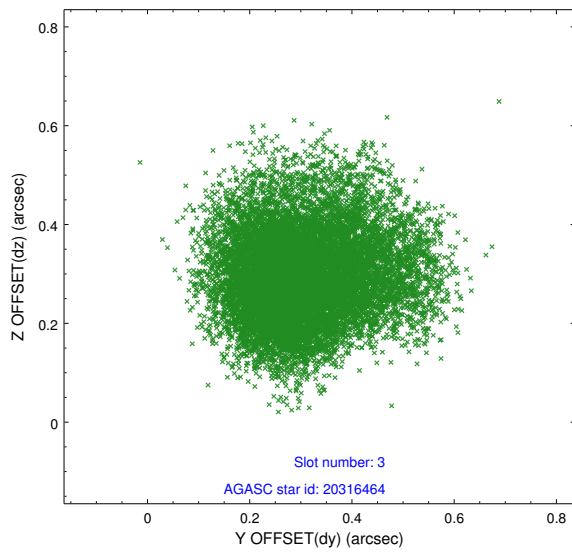
Slot Statistics

slot	status	used	id	mag	n_pts	med_dy	med_dz	dr1	dr2	ra	dec	mean_y	mean_z
0	FID		HRC-S-2	6.97	6128	0.201	-0.148	0.043	0.082	0.000000	0.000000	1227.66	-457.42
1	FID		HRC-S-3	7.01	6127	-0.022	-0.070	0.016	0.031	0.000000	0.000000	-1174.73	564.79
2	FID		HRC-S-4	6.95	6128	0.230	-0.072	0.027	0.074	0.000000	0.000000	1226.12	567.47
3	GUIDE	used	20316464	9.02	12250	0.293	0.289	0.137	0.234	100.282040	5.470405	-503.24	-1893.33
4	GUIDE	used	20341424	8.44	12247	0.115	0.288	0.080	0.128	99.923691	5.185077	-2062.86	-1370.62
5	GUIDE	used	20860472	7.02	12251	-0.170	-0.228	0.085	0.136	100.133111	6.371245	1932.29	312.15
6	GUIDE	used	20864528	7.42	12255	-0.286	-0.302	0.076	0.116	99.593328	6.317246	723.16	1830.55
7	GUIDE	used	20198680	7.42	12251	0.033	-0.054	0.076	0.126	99.264537	5.519391	-2329.40	1267.83

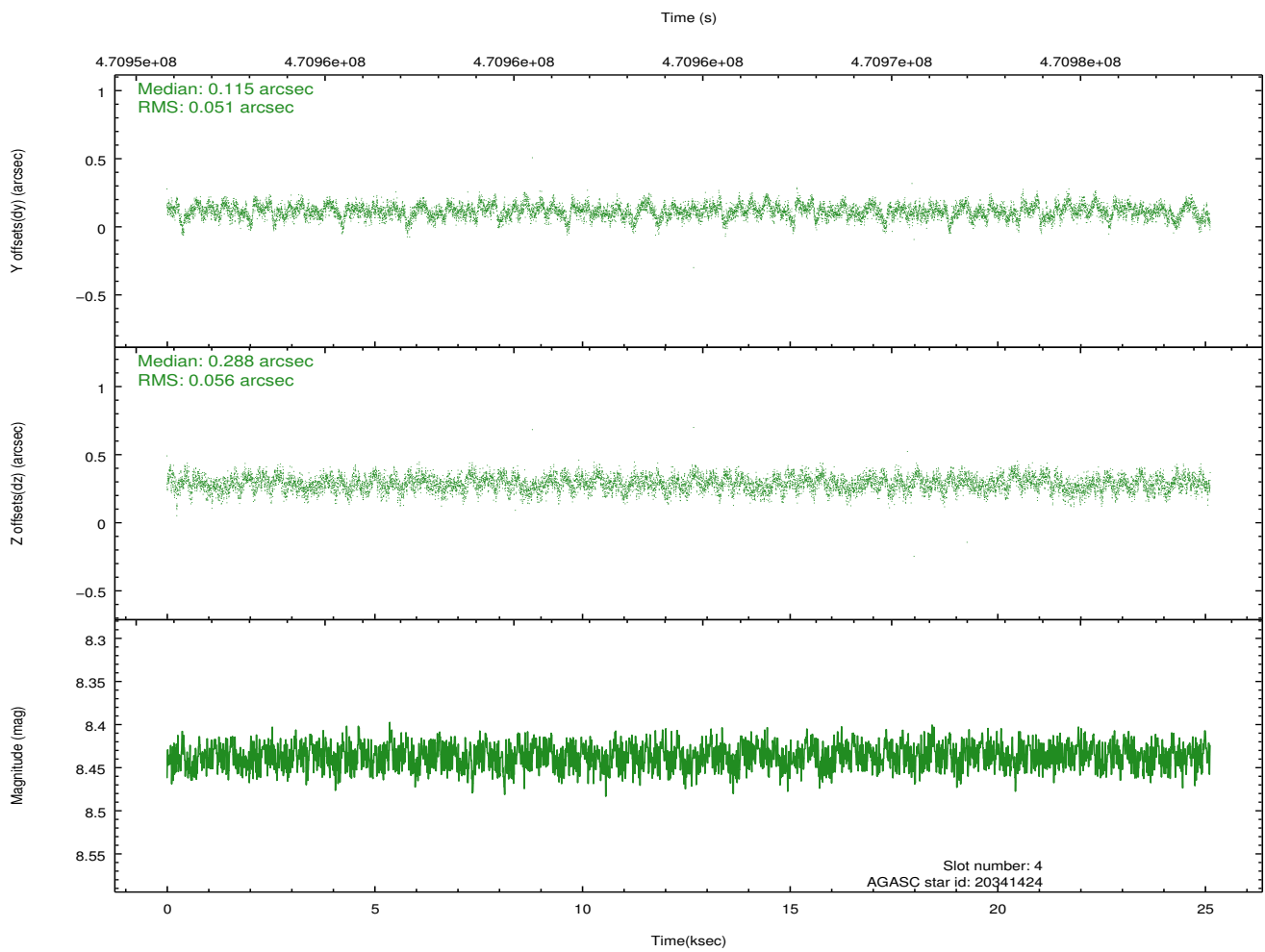
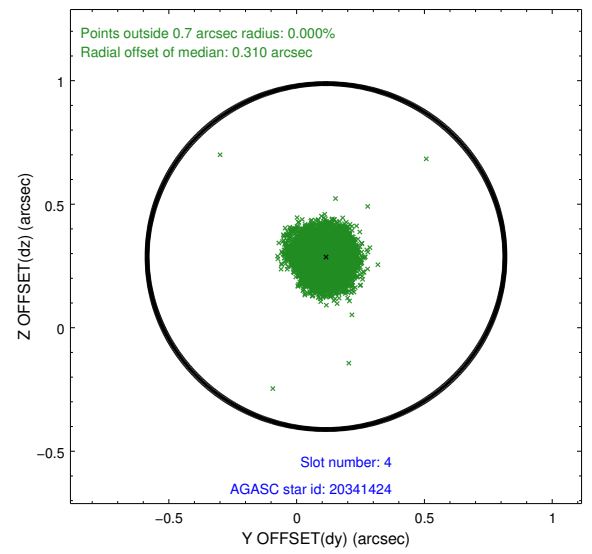
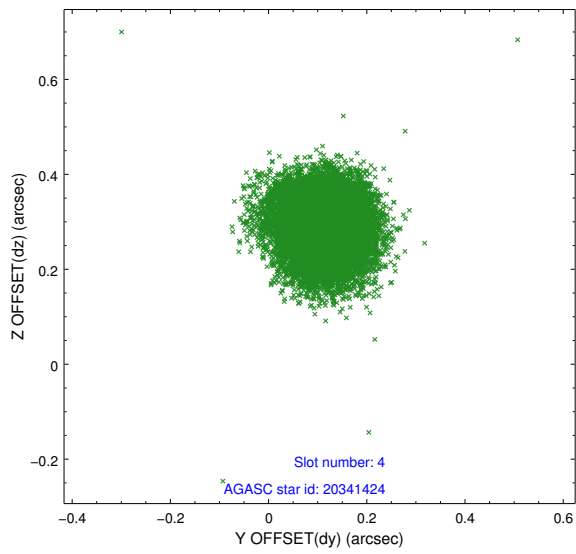
∞

2.4 Star Slots

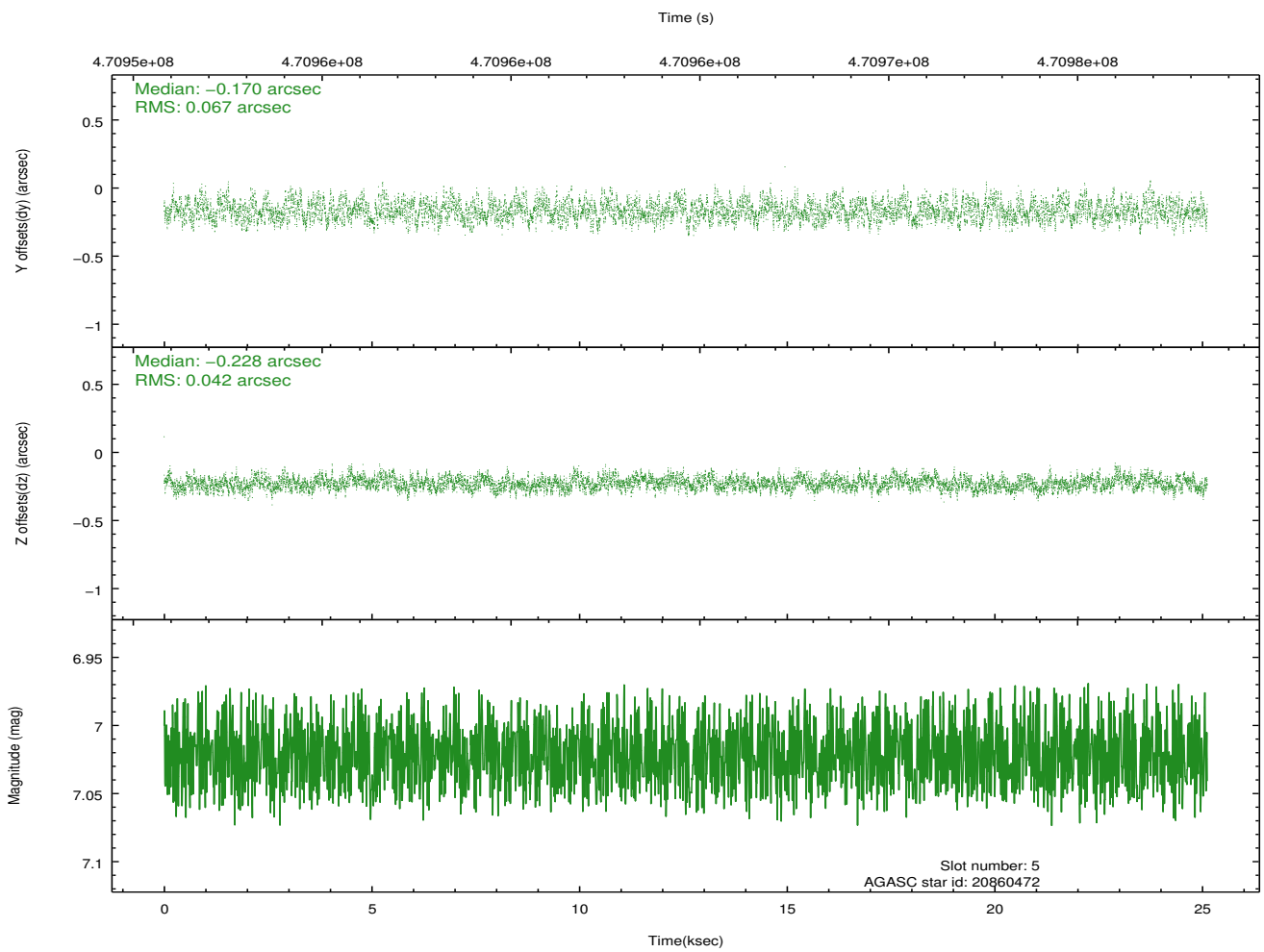
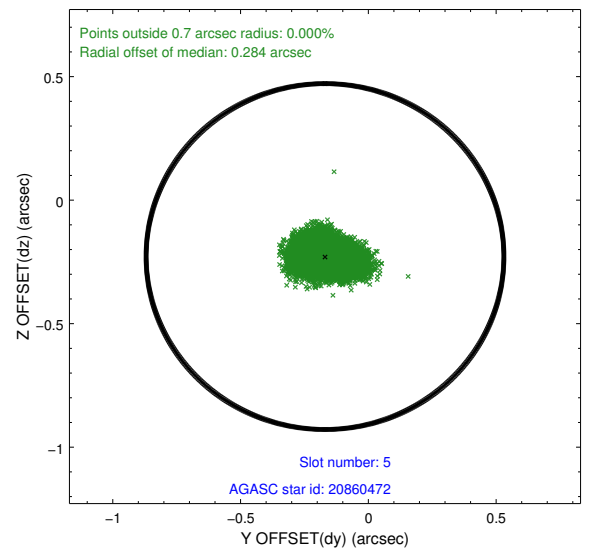
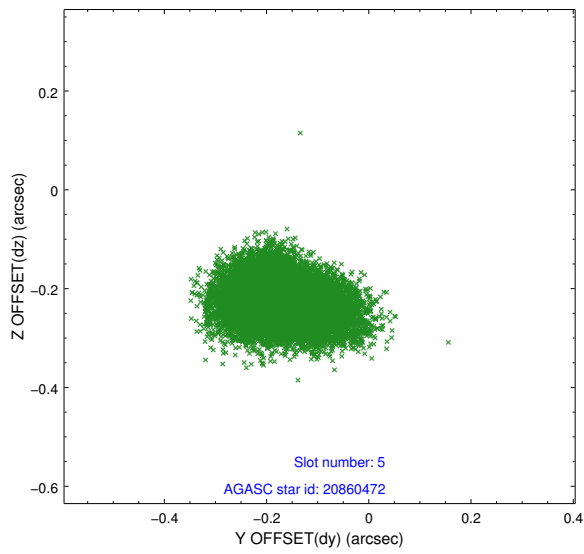
2.4.1 Slot 3



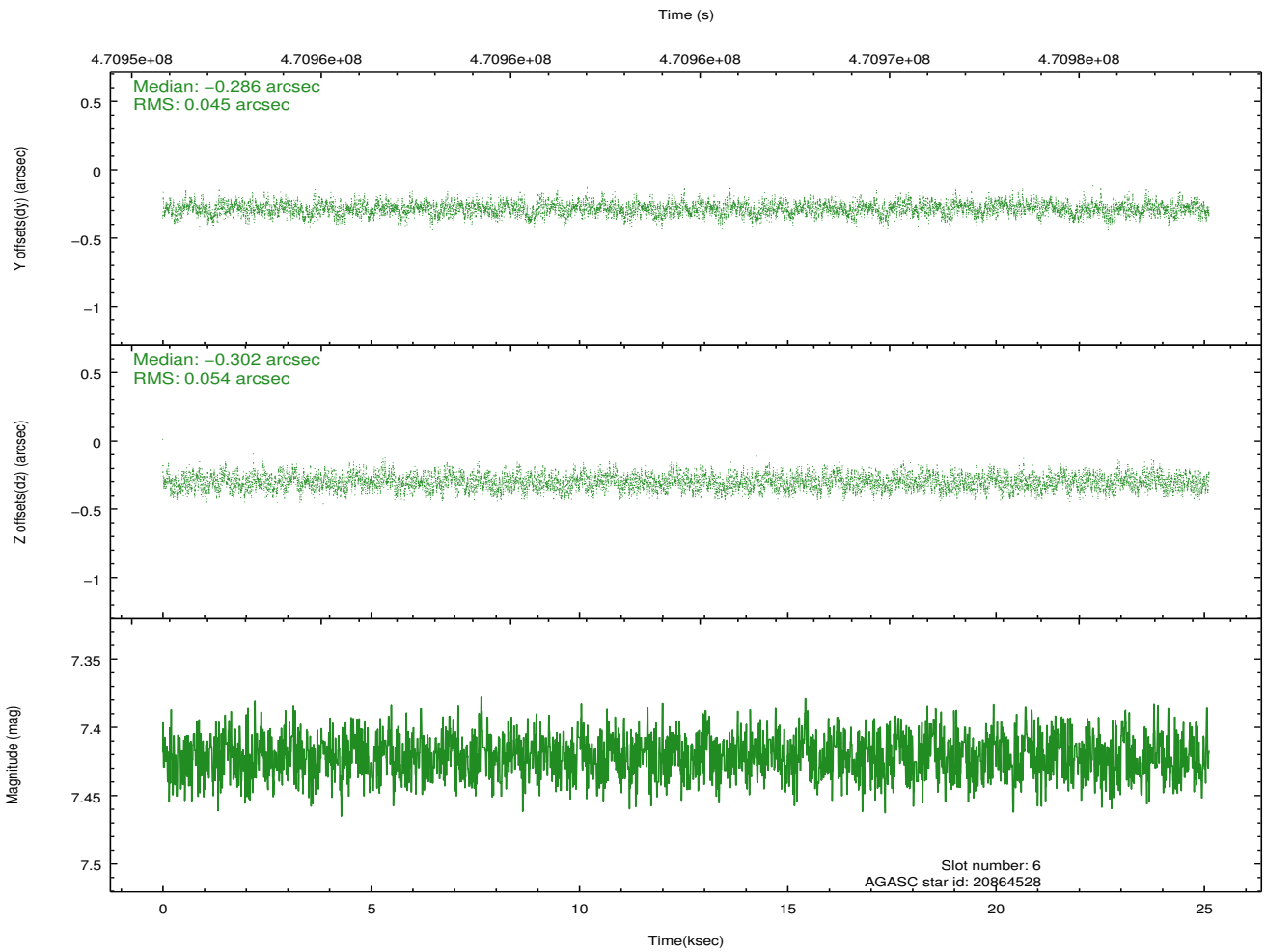
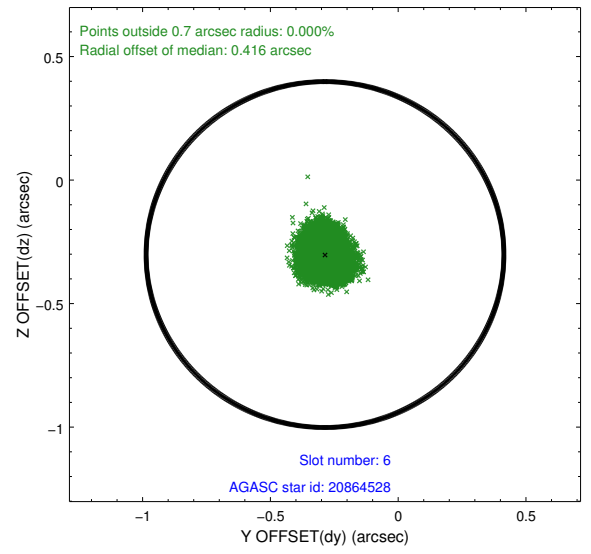
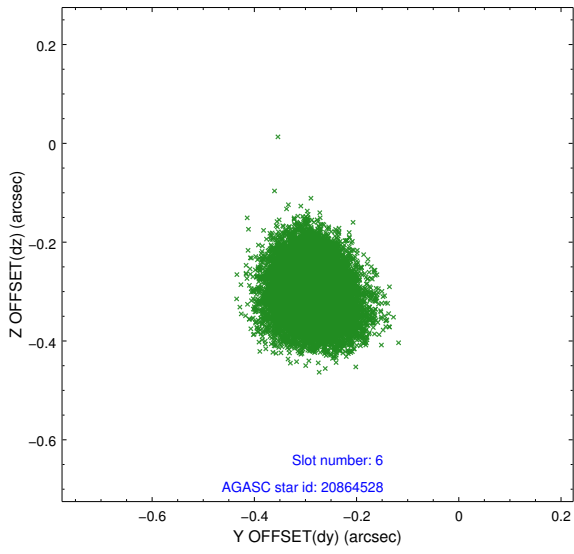
2.4.2 Slot 4



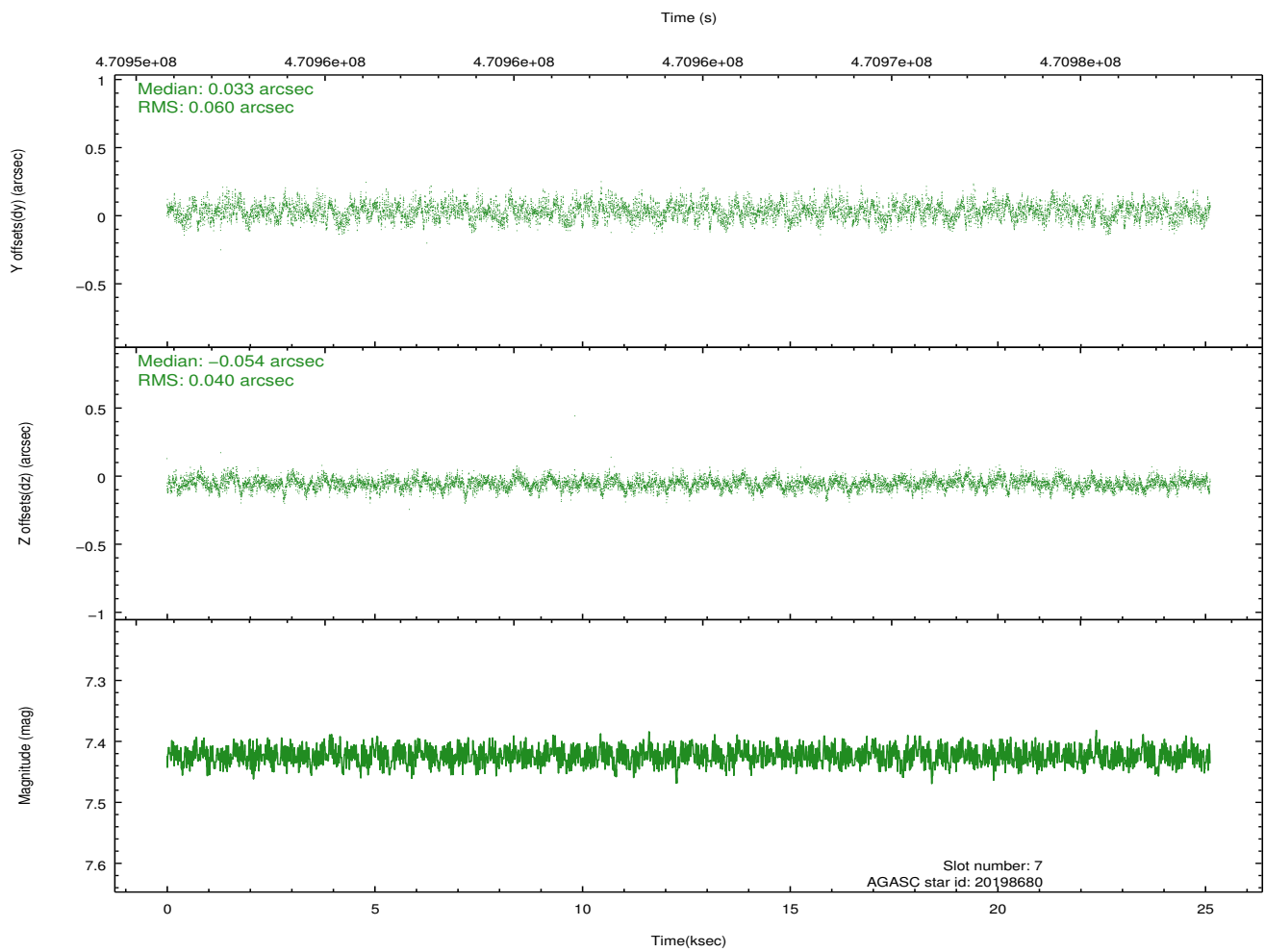
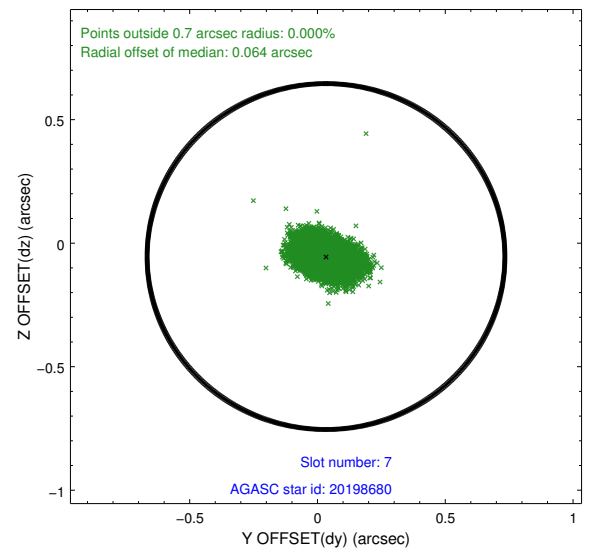
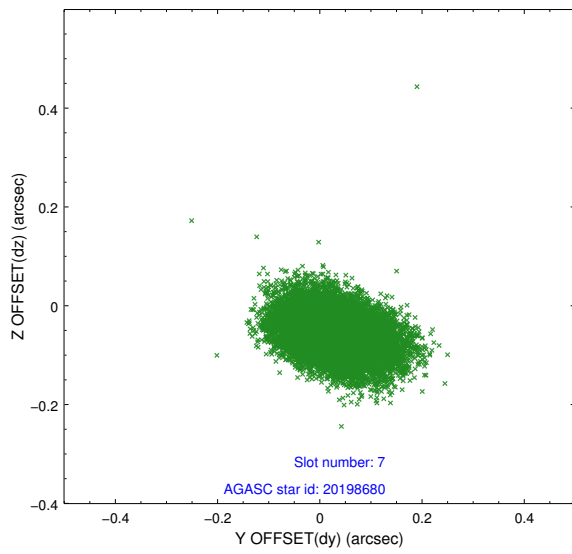
2.4.3 Slot 5



2.4.4 Slot 6

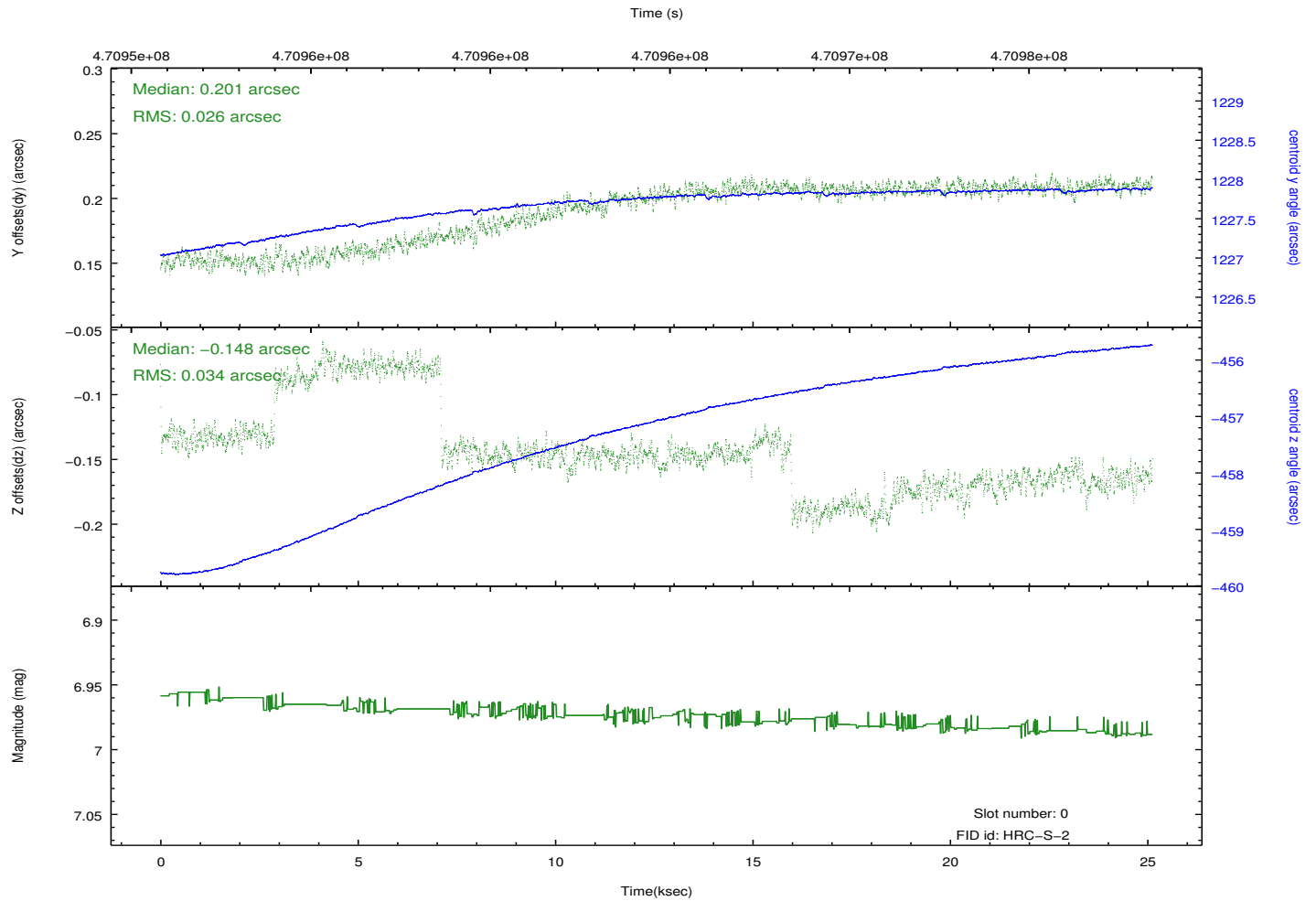
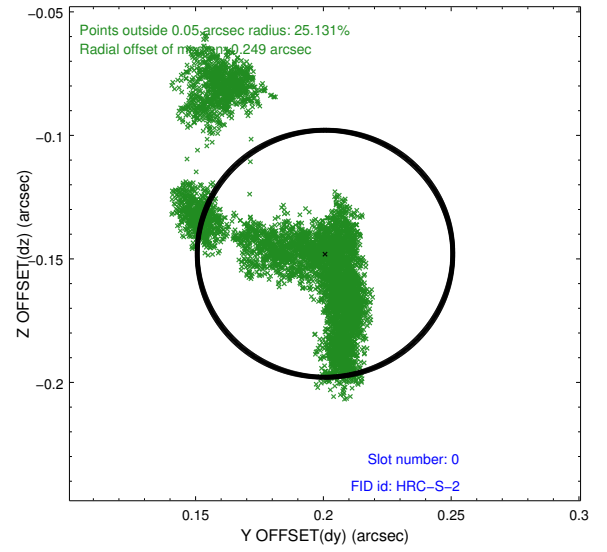
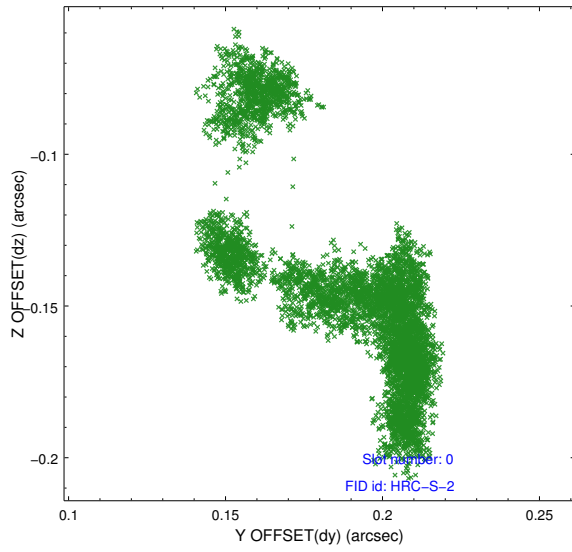


2.4.5 Slot 7

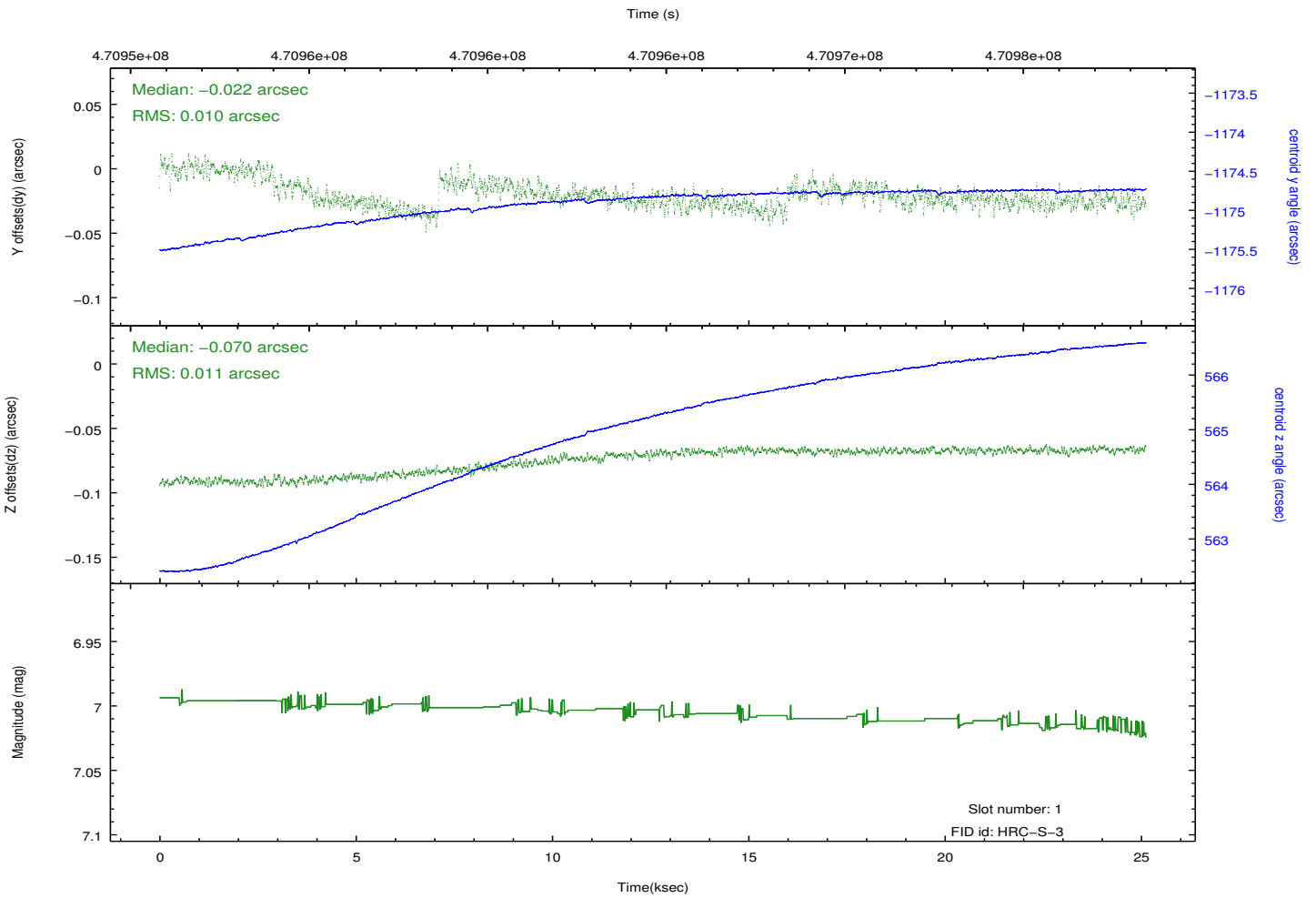
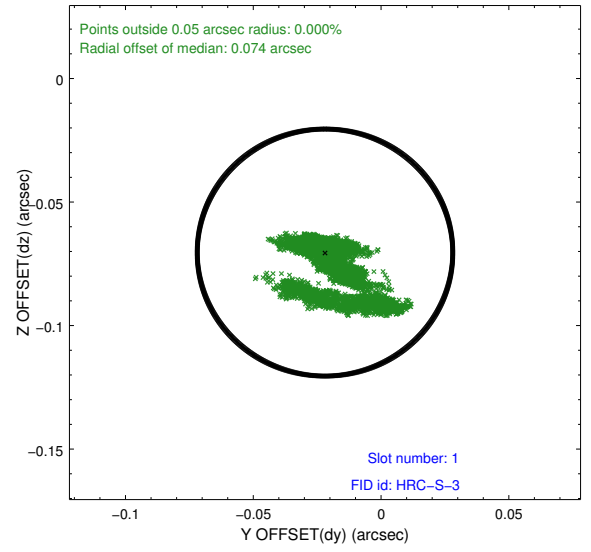
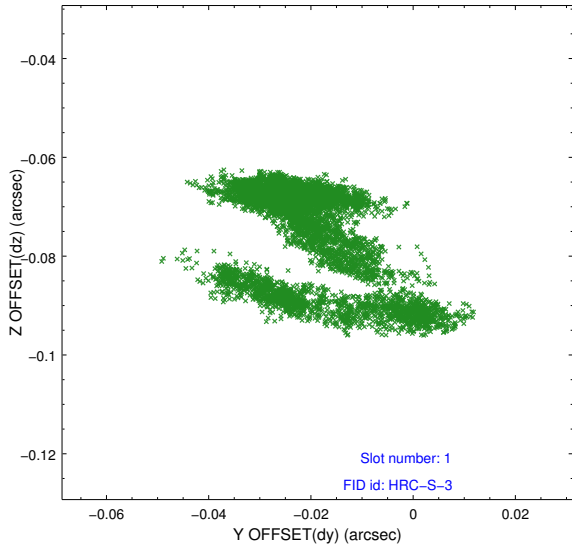


2.5 FID Slots

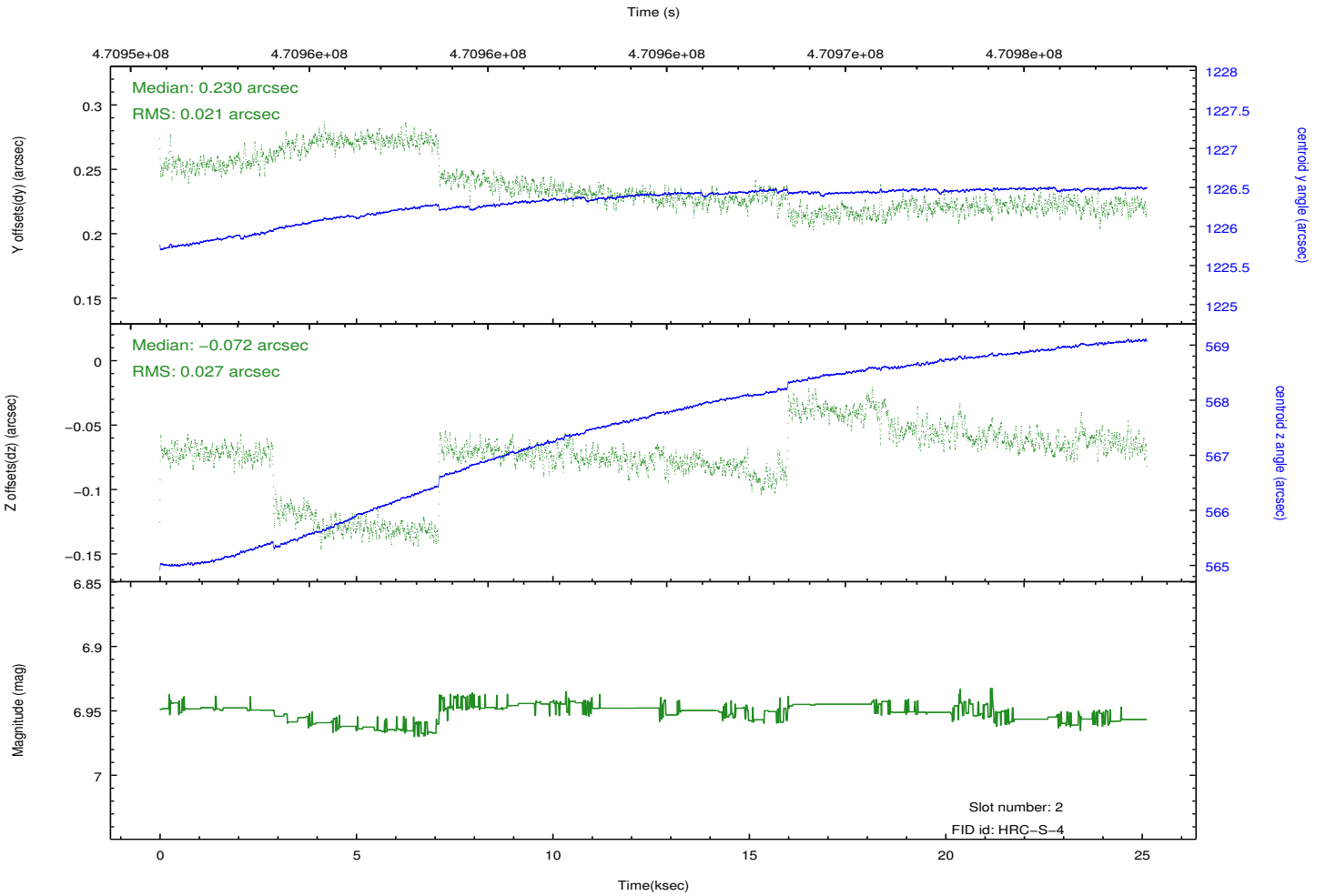
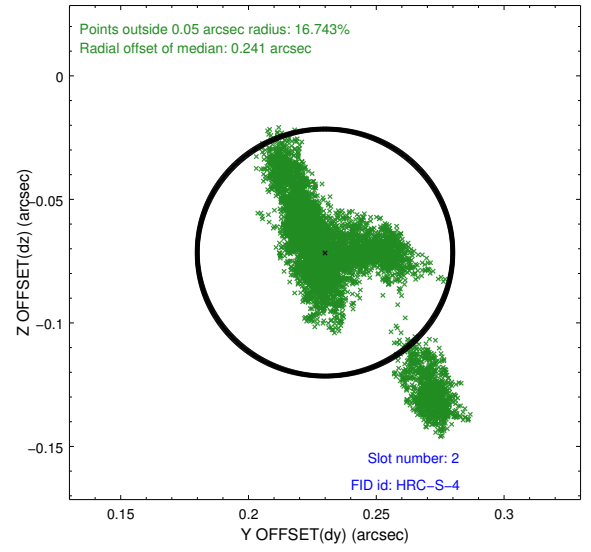
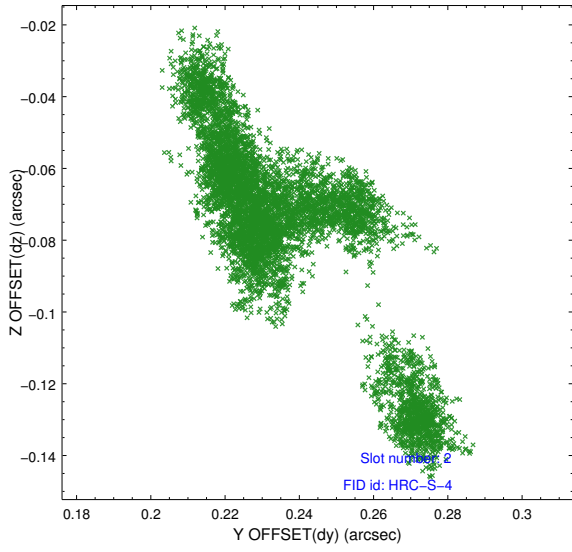
2.5.1 Slot 0



2.5.2 Slot 1

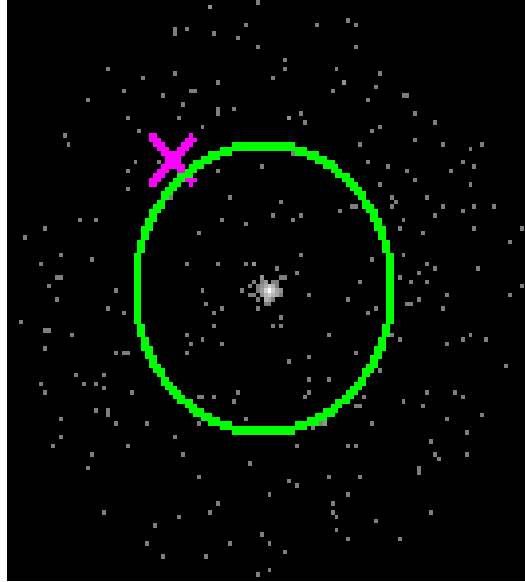


2.5.3 Slot 2



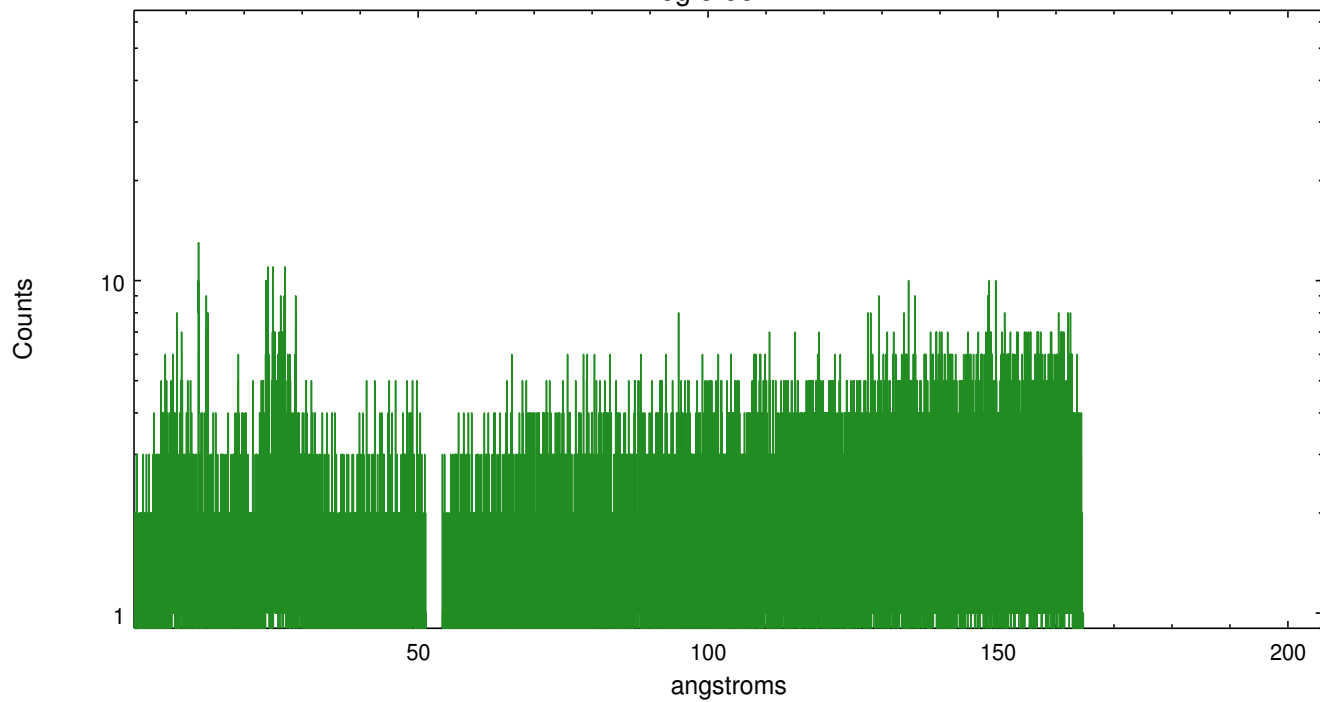
3 Gratings

3.1 LETG Arm

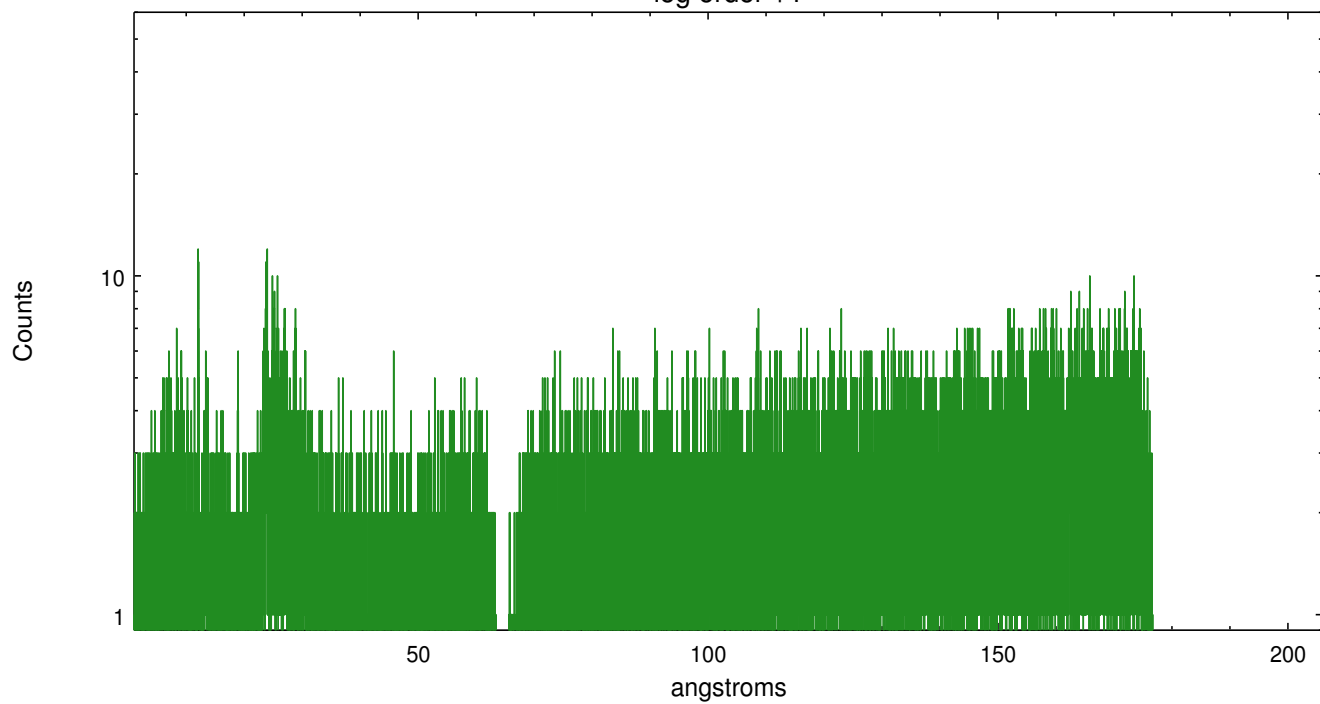


LETG Zero Order

leg order -1



leg order +1



A Summary

A.1 Status

V&V Scientist	Beth Sundheim
V&V Date (YYYY-MM-DD)	2015.11.20
V&V Edition	1
V&V Disposition and Status	OK
V&V Charge Time	25.119932600796

A.2 Comments

These data have been reprocessed with new aspect alignment calibration files that correct small mean offsets (up to 0.4 arcsecs) and improve overall astrometric accuracy. The new calibration was determined using data from the time period being reprocessed and was performed using cross-correlation of X-ray sources with radio and optical counterparts.