

V&V Reference Report

L2 ASCDS Version : 10.2.1

Observation 15806 - L2 Version 2
Chandra X-Ray Center

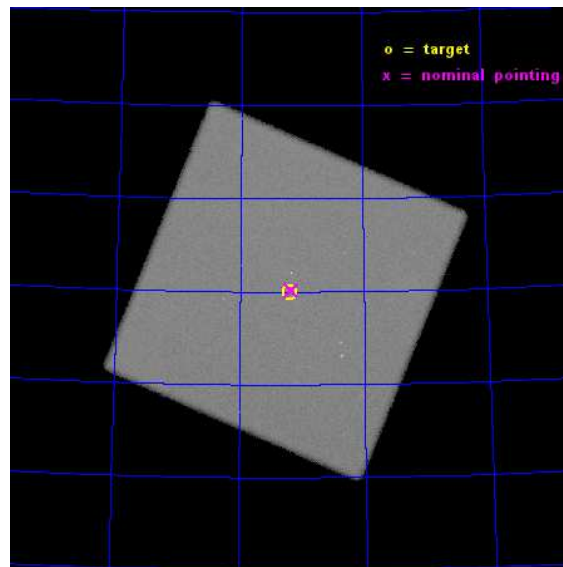
L2 Processing Date : Dec 10 2014

Contents

1	Front	2
2	OBI	3
2.1	OBI	3
2.1.1	Images	3
2.1.2	Parameters	4
2.1.3	Events	4
2.2	Compared Parameters	5
2.3	Aspect	6
2.4	Star Slots	9
2.4.1	Slot 3	9
2.4.2	Slot 4	10
2.4.3	Slot 5	11
2.4.4	Slot 6	12
2.4.5	Slot 7	13
2.5	FID Slots	14
2.5.1	Slot 0	14
2.5.2	Slot 1	15
2.5.3	Slot 2	16
A	Summary	17
A.1	Status	17
A.2	Comments	17

1 Front

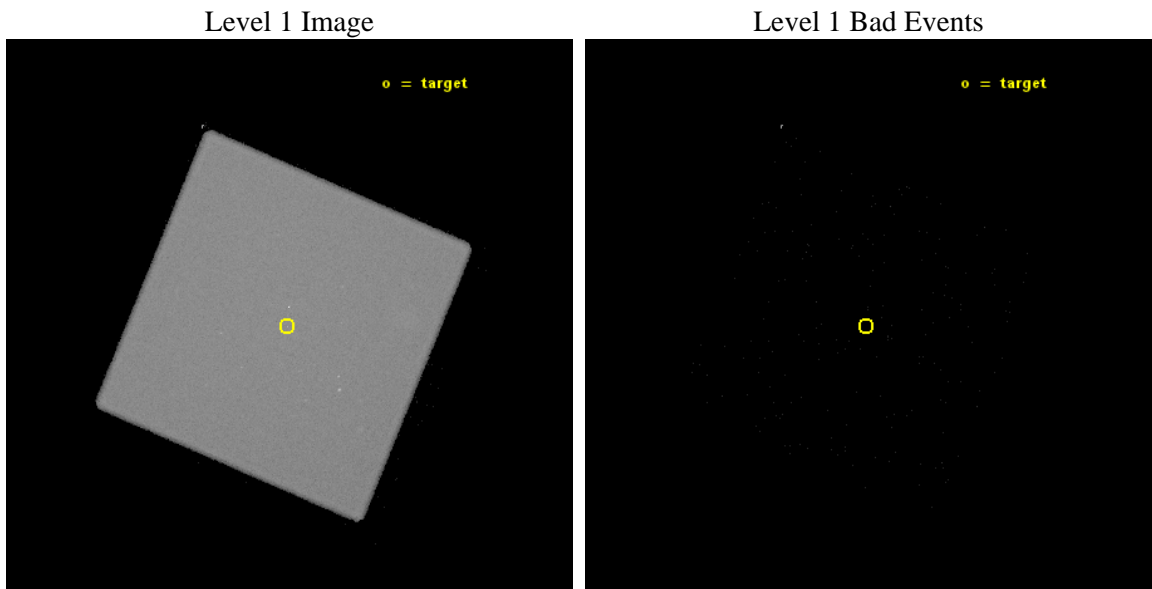
seq_num	502039	Sequence number
obs_id	15806	Observation id
title	Measuring the Proper Motion of the Quiet Pulsar Calvera	Proposal t
observer	Prof. Jules Halpern	Principal investigator
object	CXOU J141259.3+791958	Source name
ra_targ	213.247083	Observer's specified target RA [deg]
dec_targ	79.332833	Observer's specified target Dec [deg]
ra_nom	213.23042816247	Nominal RA [deg]
dec_nom	79.335795229832	Nominal Dec [deg]
roll_nom	157.87815335647	Nominal Roll [deg]
revision	2	Processing version of data
ontime	30185.22666508	[s]
livetime	29961.668496751	Ontime multiplied by DTCOR
l2events	1720393	Number of level 2 events



2 OBI

2.1 OBI

2.1.1 Images



2.1.2 Parameters

obi_num	0	Obi number	sched_exp_time	30000.000000	[s] Scheduled observation exposure time
ascdsver	10.3.1	Processing system revision	ontime	30185.22666508	[s]
caldbver	4.6.4	 	l1events	2393951	Number of level 1 events
date	2014-12-10T19:24:00	Date and time of file creation			
revision	2	Processing version of data			

2.1.3 Events

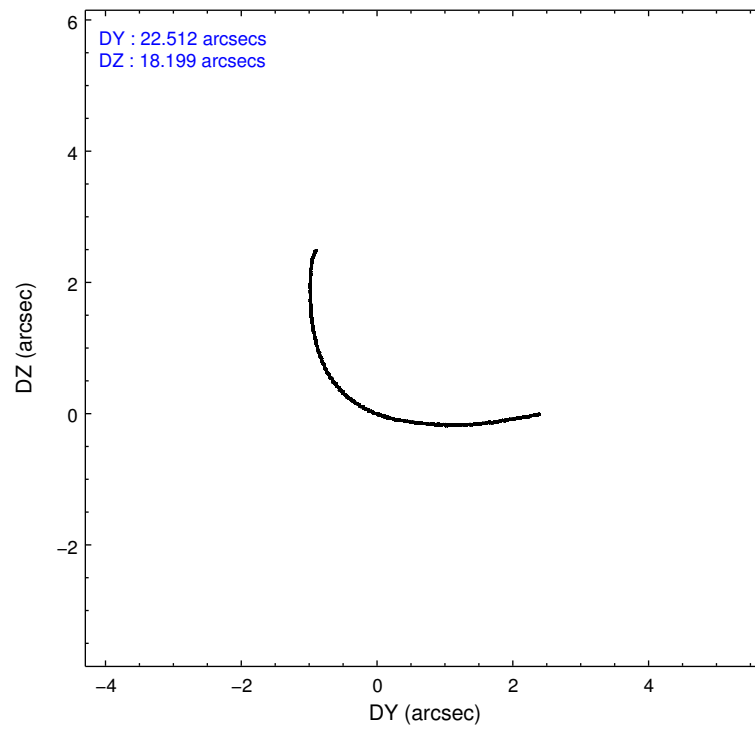
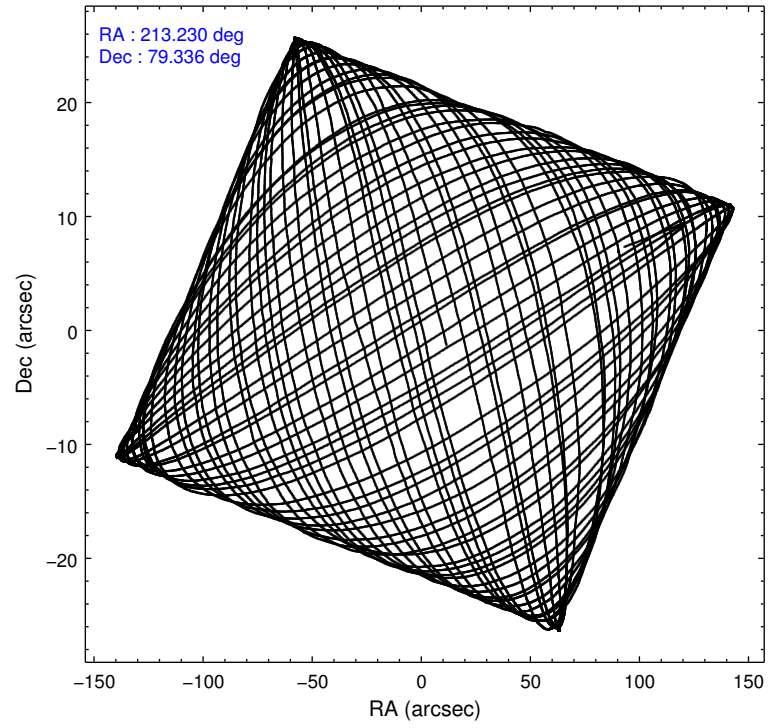
Level 1 Events

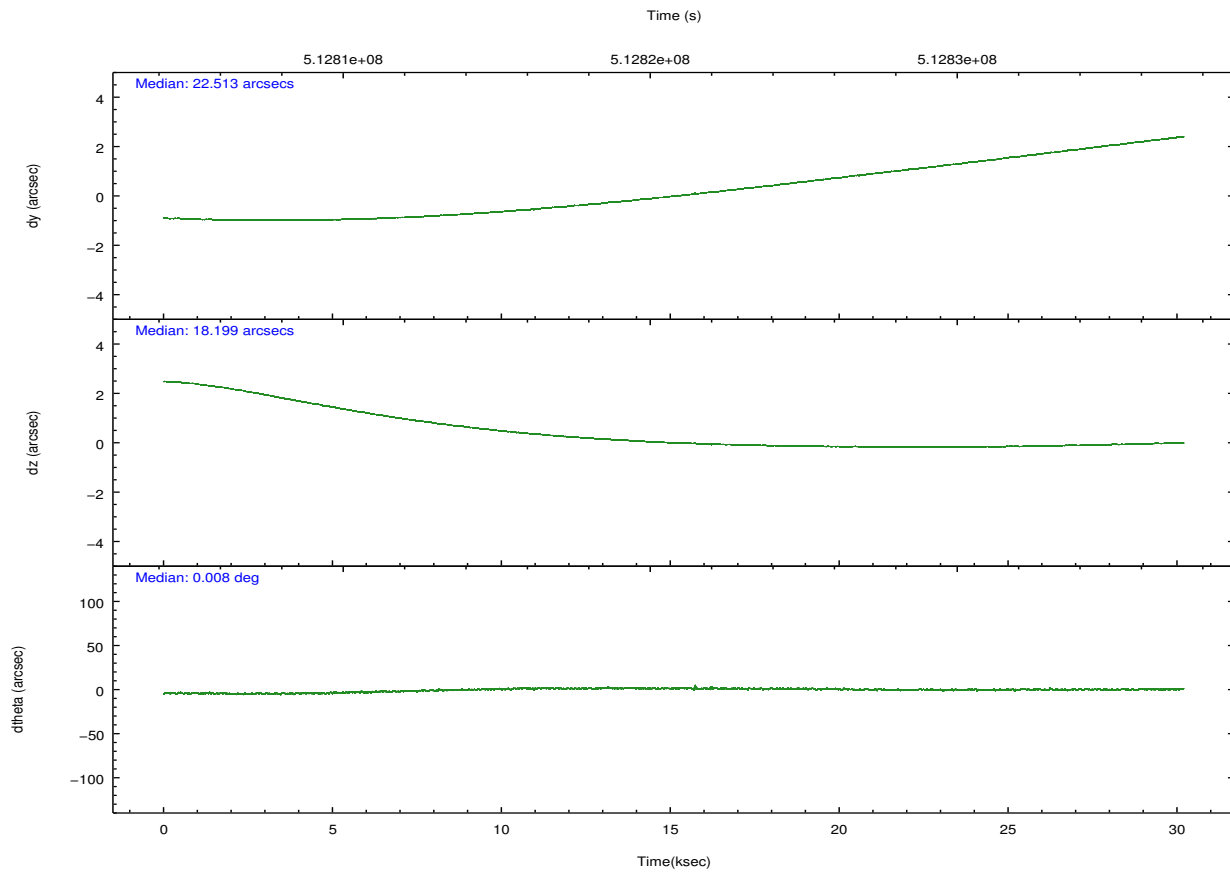
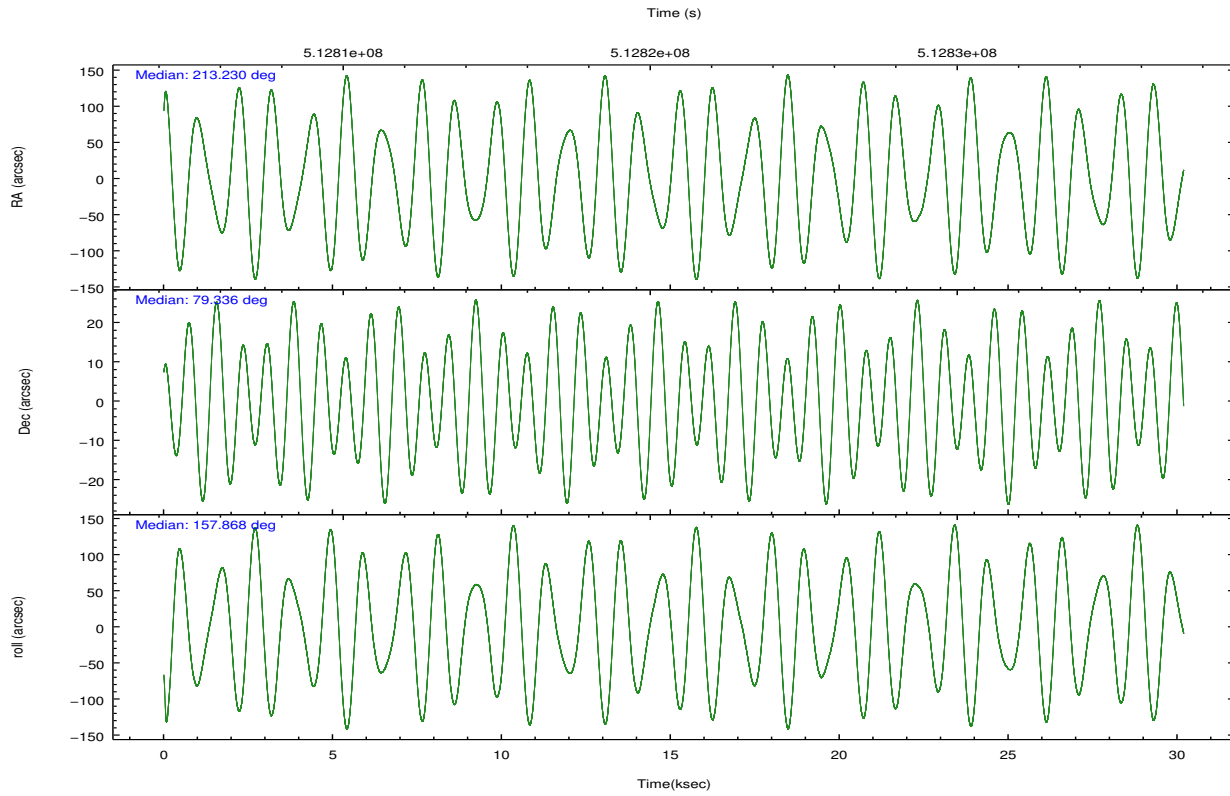
	segment 0
level 1 events	2393951
rejected events	71687
rejected %	2%

2.2 Compared Parameters

Parameter	Planned	Actual	Parameter	Planned	Actual
Instrument	HRC	HRC	Obspar format version number	7	7
Detector	HRC-I	HRC-I	Obspar file type	PREDICTED	ACTUAL
Grating	NONE	NONE	Obspar update status	NONE	UPDATED
Data mode	OBSERVING	OBSERVING			
Observation mode	POINTING	POINTING			
[deg] Pointing RA	213.375727	213.2304281624656			
[deg] Pointing Dec	79.340076	79.33579522983194			
[deg] Pointing Roll	157.830833	157.8781533564691			
[mm] SIM focus pos	-1.040293	-1.038866356238299			
[mm] SIM defocus	0	0.001426264420575141			
[mm] SIM translation stage pos	126.985494	126.9829799899862			
[mm] SIM translation stage offset	0	0.002508901615314585			
[s] Observation start time (MET)	512805862.184000	512804795.87787			
Observation start date	2014-04-02T06:03:15	2014-04-02T05:46:35			
[s] Observation end time (MET)	512835862.184000	512836666.71713			
Observation end date	2014-04-02T14:23:15	2014-04-02T14:37:46			

2.3 Aspect





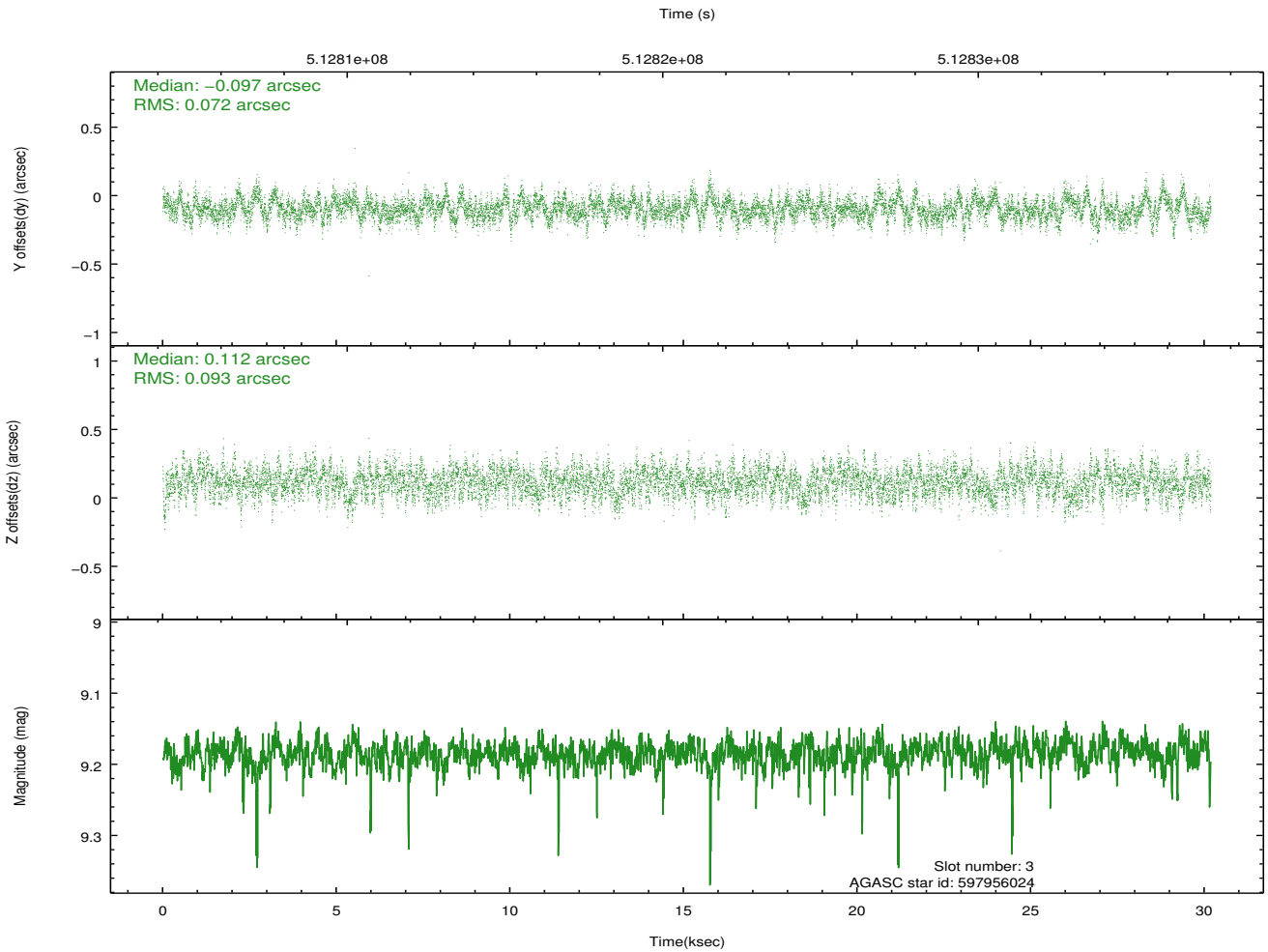
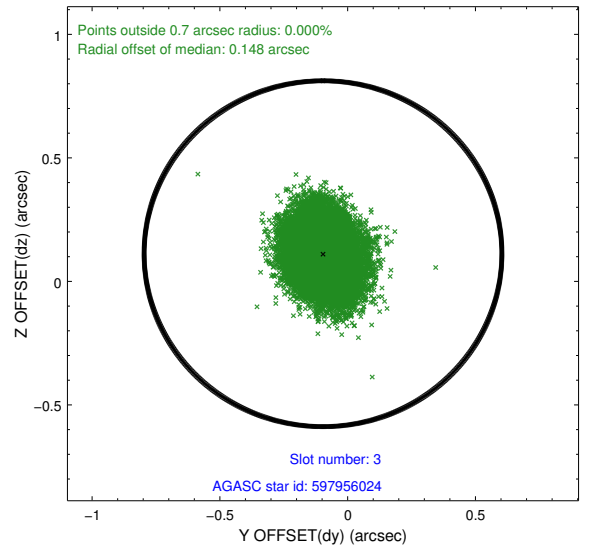
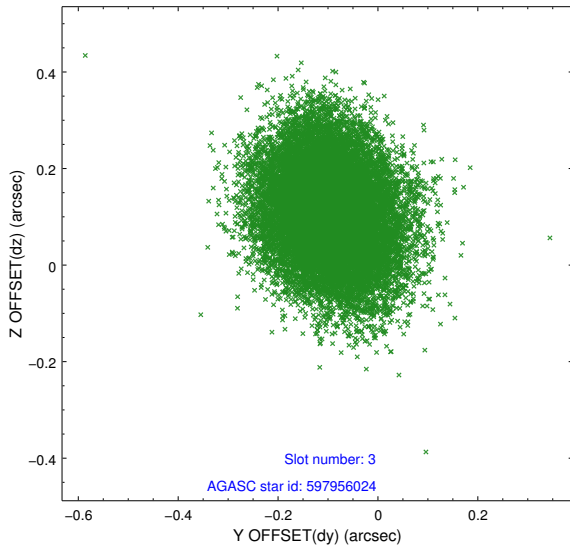
Slot Statistics

slot	status	used	id	mag	n_pts	med_dy	med_dz	dr1	dr2	ra	dec	mean_y	mean_z
0	FID		HRC-I-2	7.05	7362	0.081	-0.080	0.031	0.047	0.000000	0.000000	833.96	-1308.50
1	FID		HRC-I-3	7.10	7363	-0.239	0.018	0.034	0.051	0.000000	0.000000	-1207.37	997.54
2	FID		HRC-I-4	7.03	7363	0.281	-0.022	0.015	0.025	0.000000	0.000000	1264.14	995.44
3	GUIDE	used	597956024	9.19	14716	-0.097	0.112	0.125	0.202	215.481244	79.329736	-1303.68	-518.02
4	GUIDE	used	597956640	9.76	14713	0.101	-0.007	0.201	0.338	217.299324	79.616316	-1948.09	-1959.94
5	GUIDE	used	597956800	8.99	14720	-0.054	-0.004	0.124	0.200	213.871920	79.999122	608.49	-2314.57
6	GUIDE	used	597957536	9.32	14715	0.203	-0.004	0.143	0.232	214.978754	79.574657	-642.18	-1189.06
7	GUIDE	used	597826088	9.72	14710	-0.161	-0.101	0.208	0.338	213.246436	79.535232	343.88	-617.58

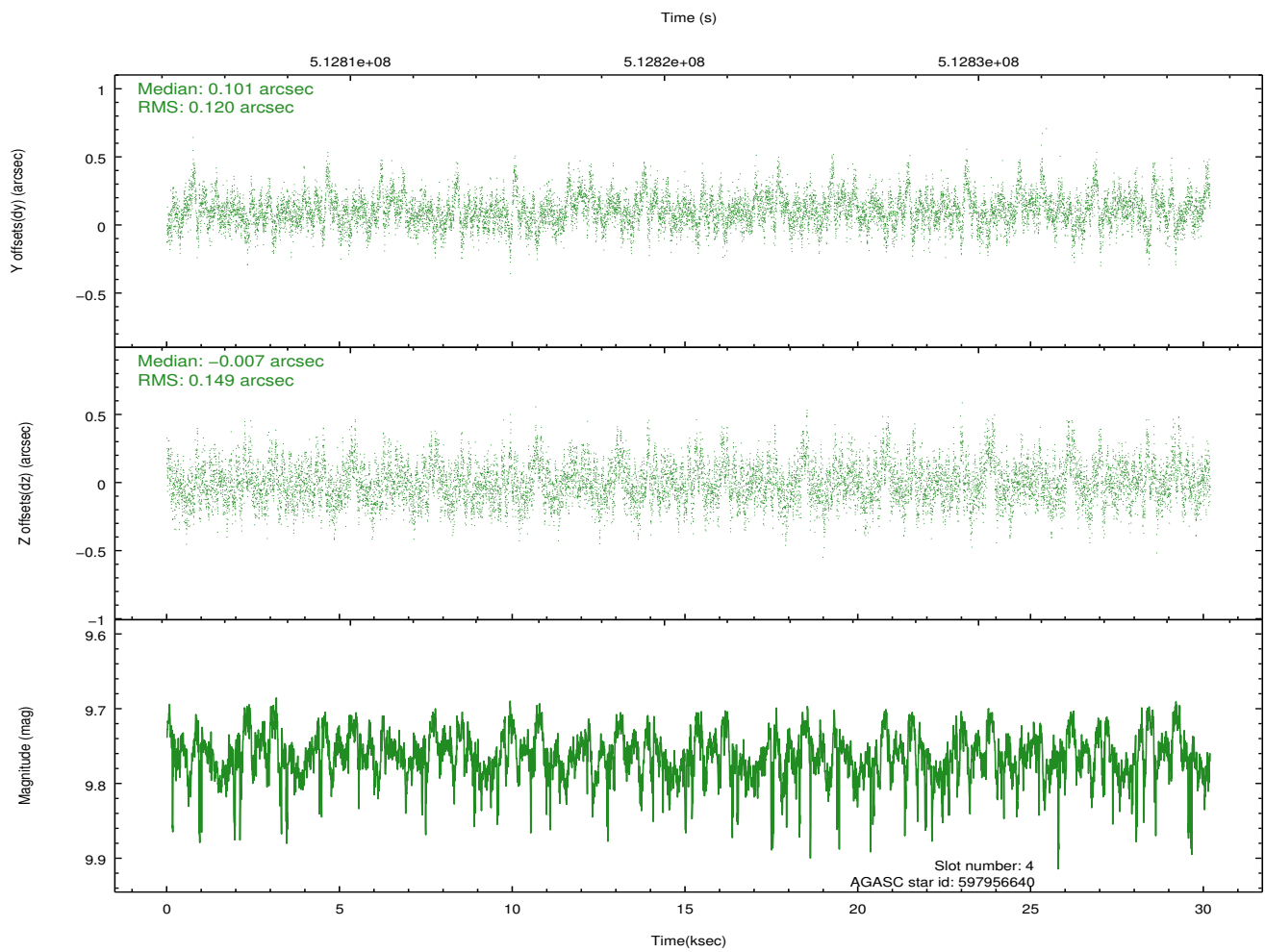
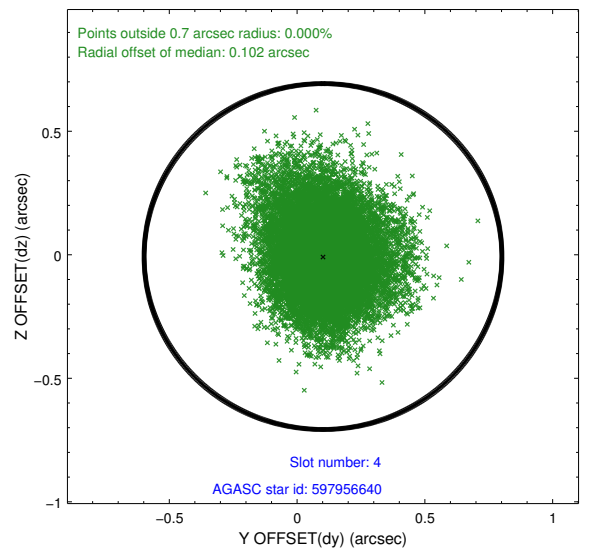
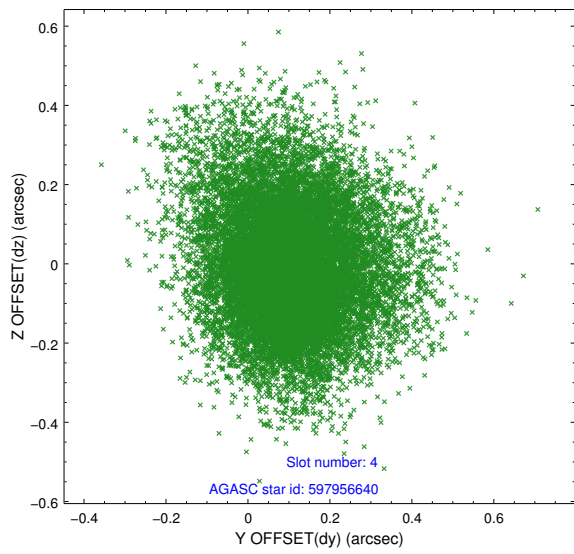
∞

2.4 Star Slots

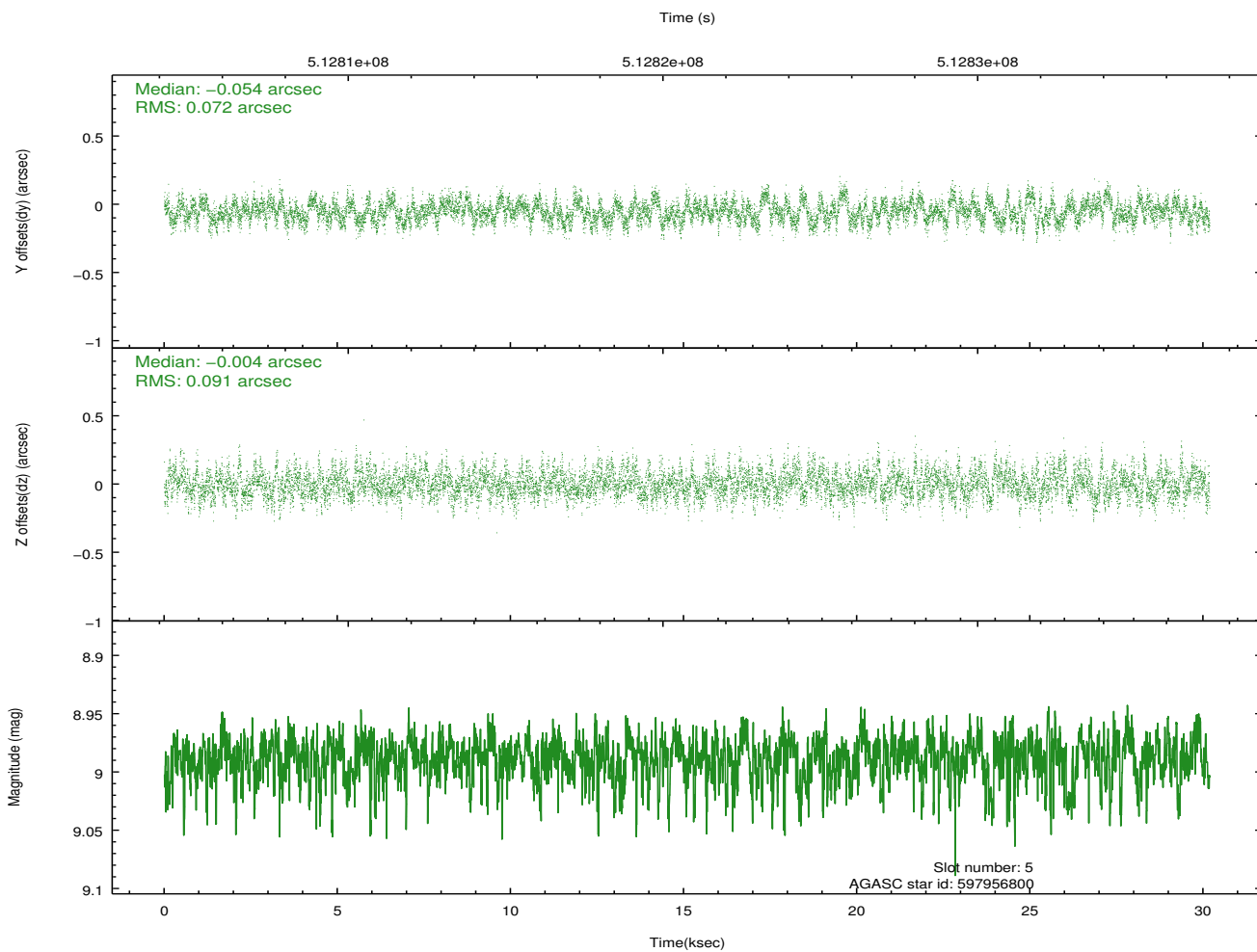
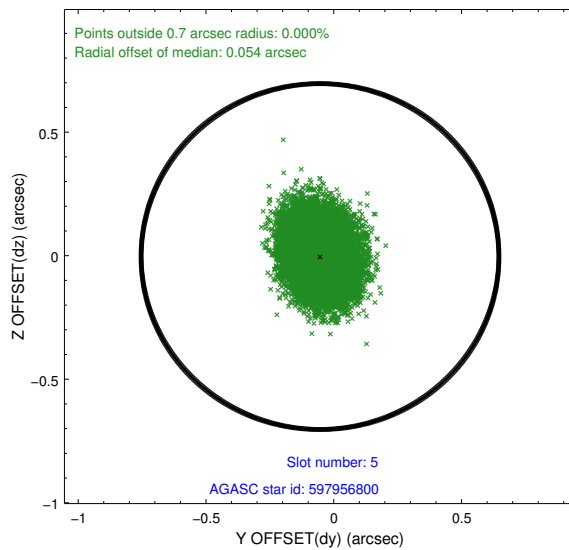
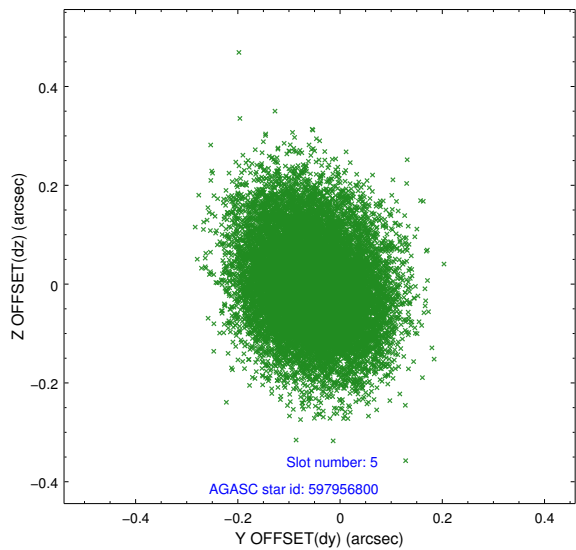
2.4.1 Slot 3



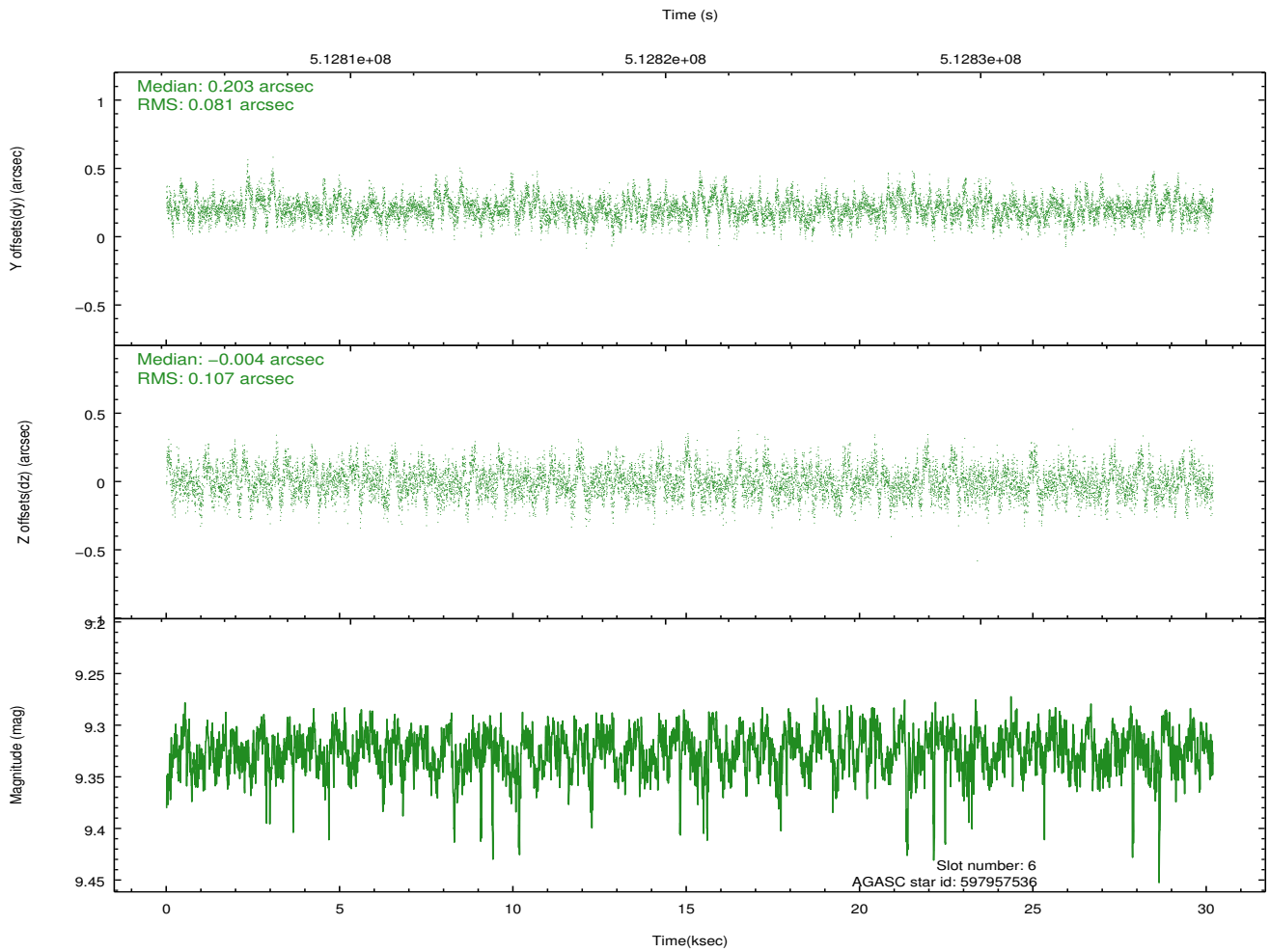
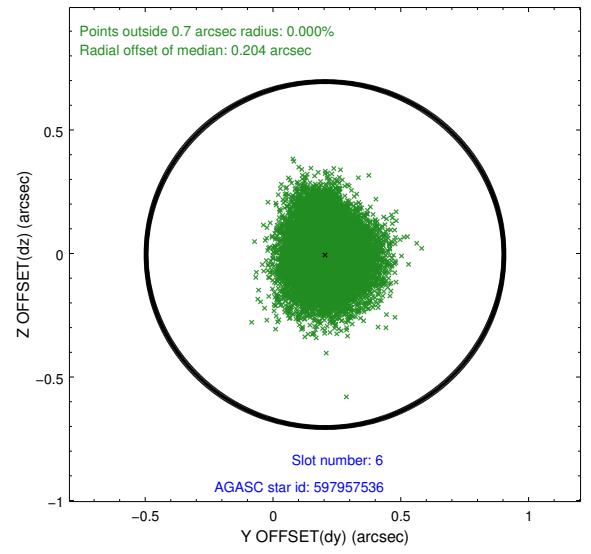
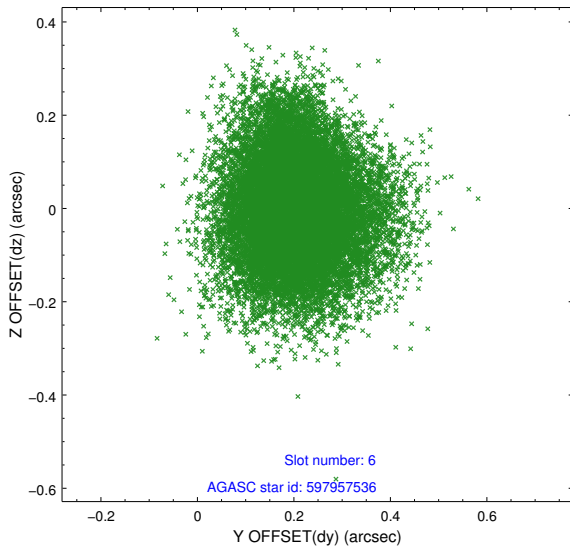
2.4.2 Slot 4



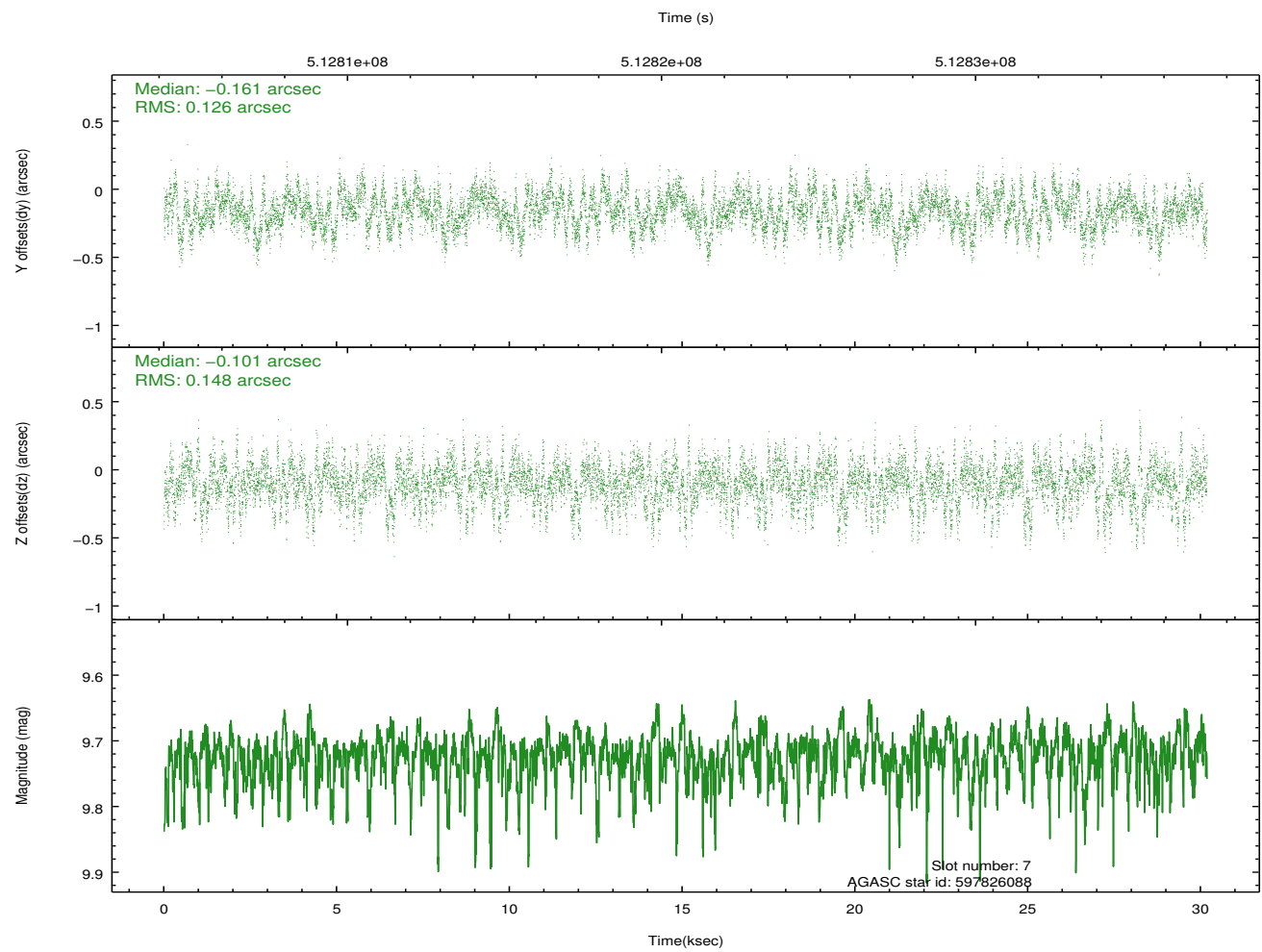
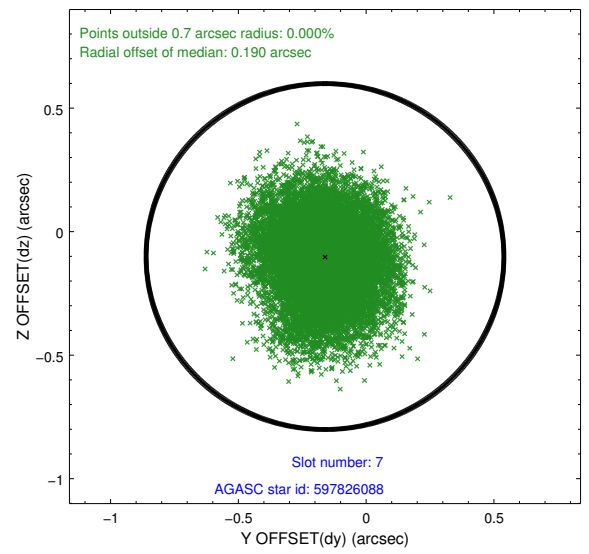
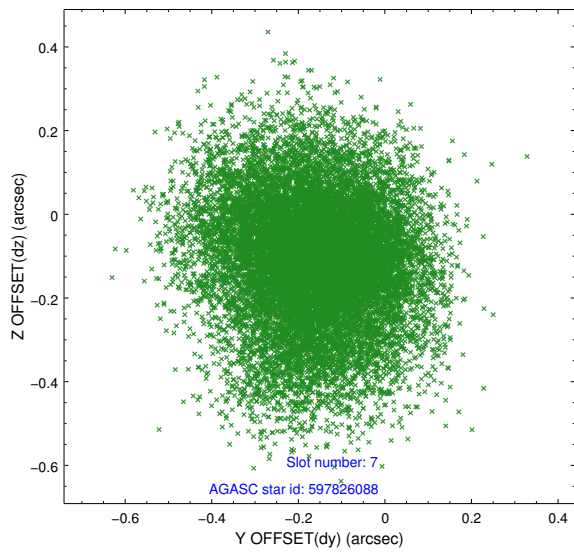
2.4.3 Slot 5



2.4.4 Slot 6

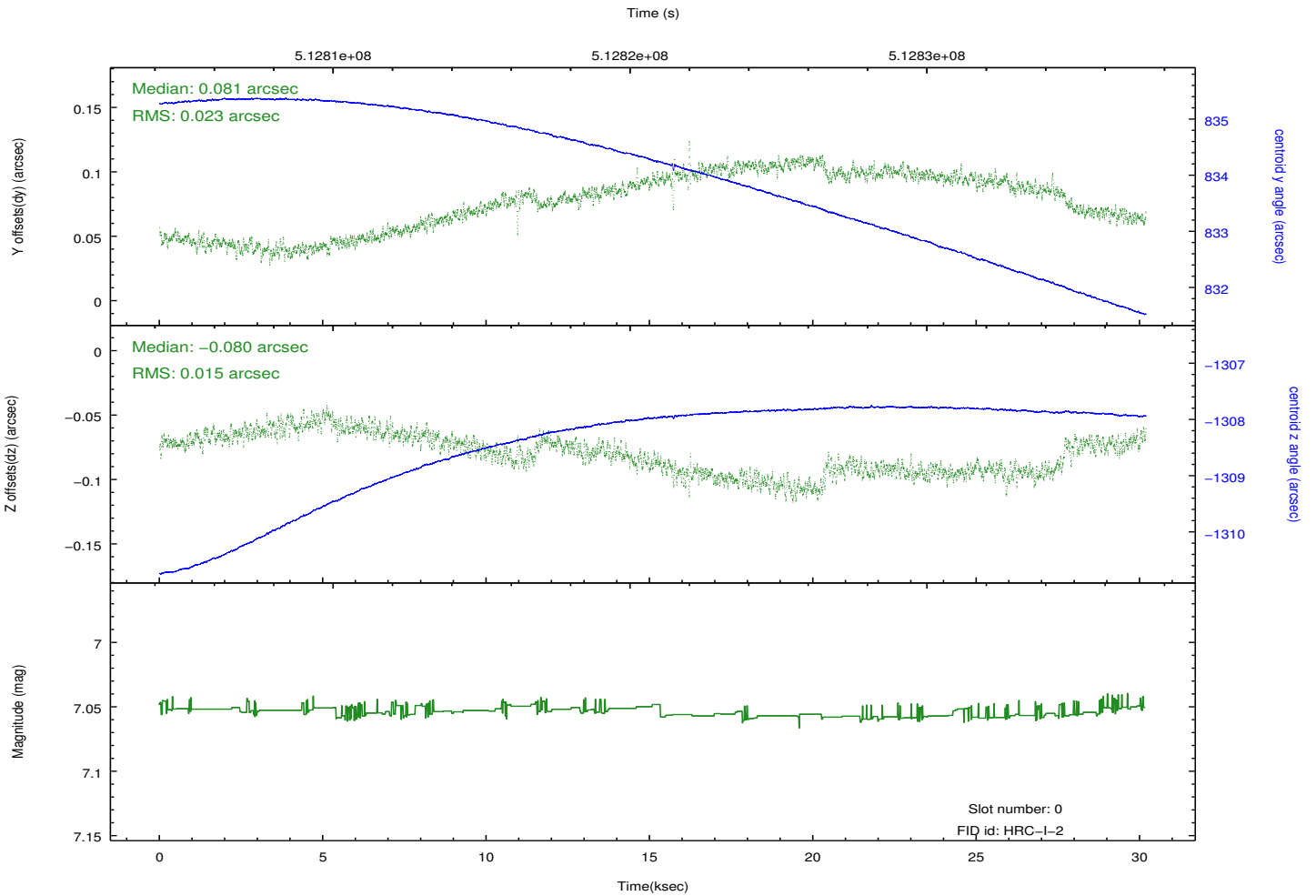
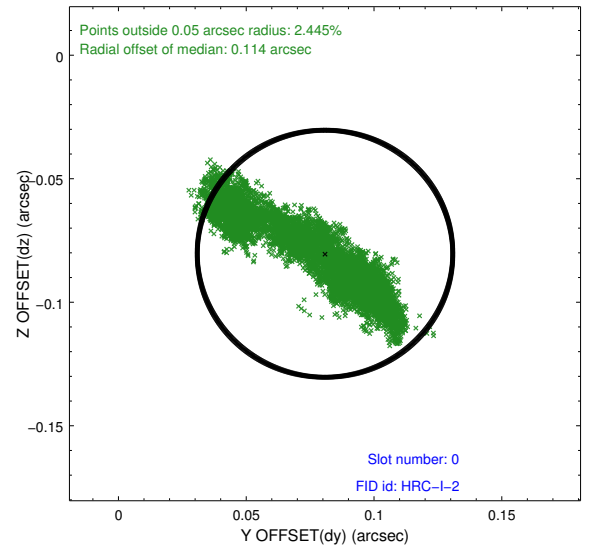
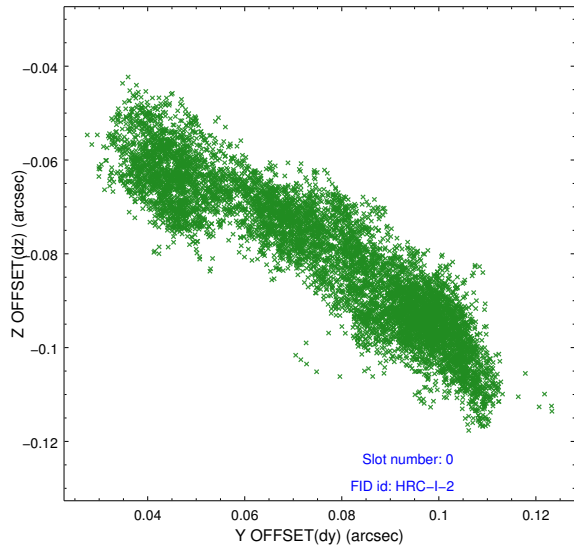


2.4.5 Slot 7

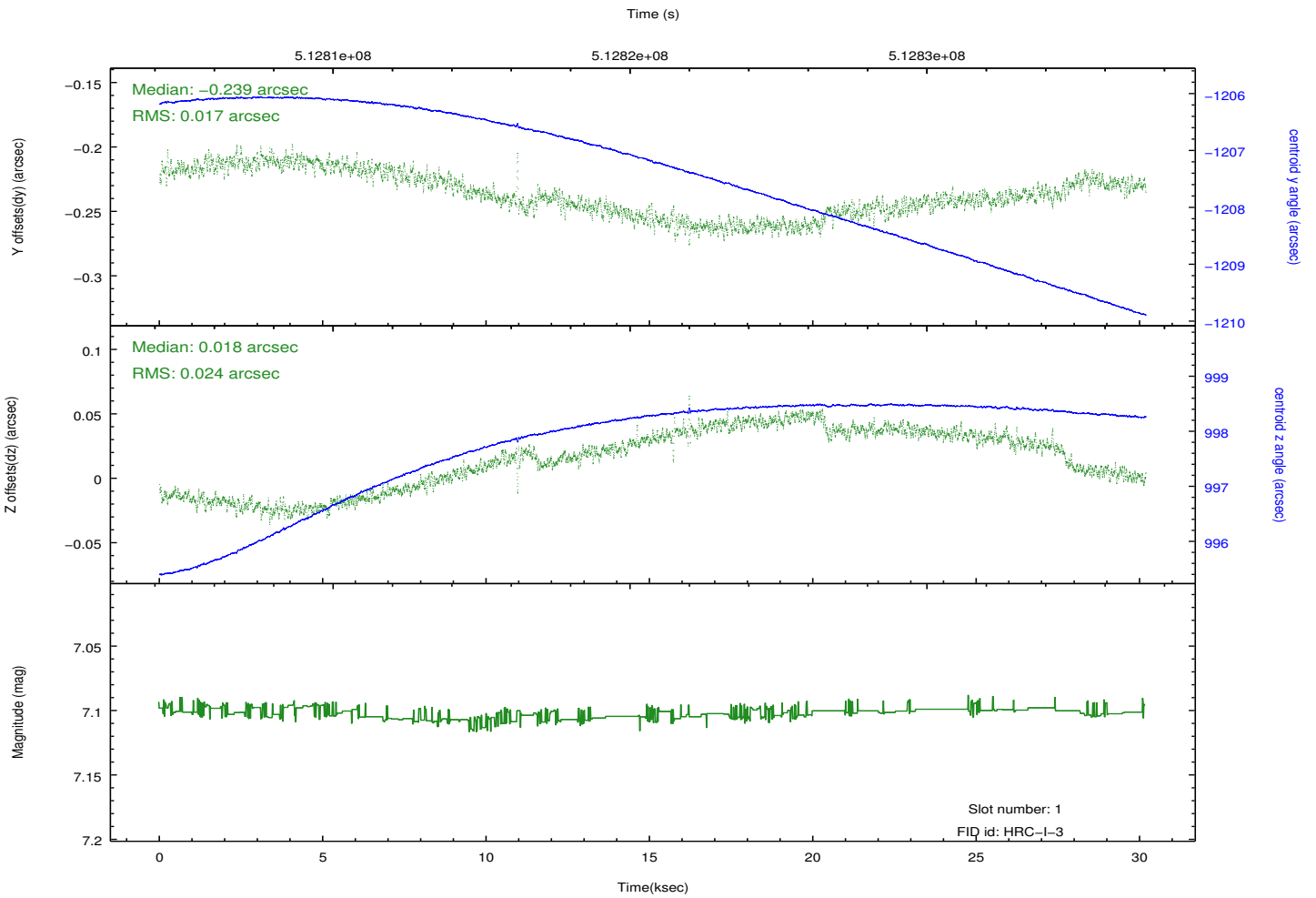
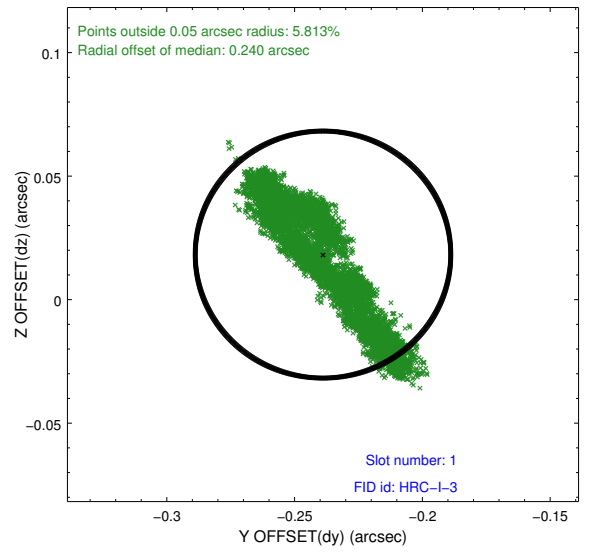
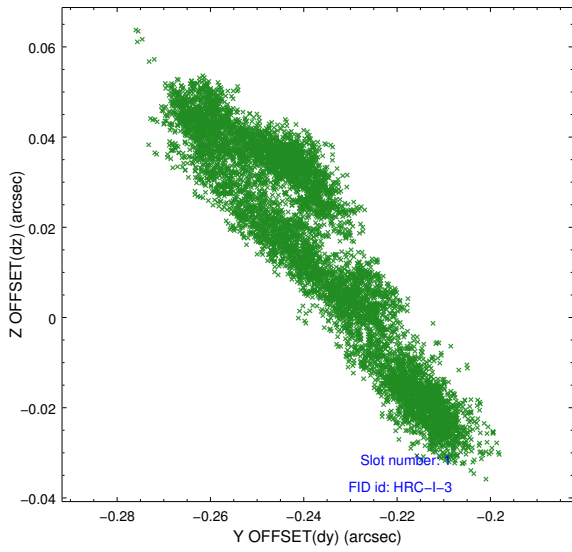


2.5 FID Slots

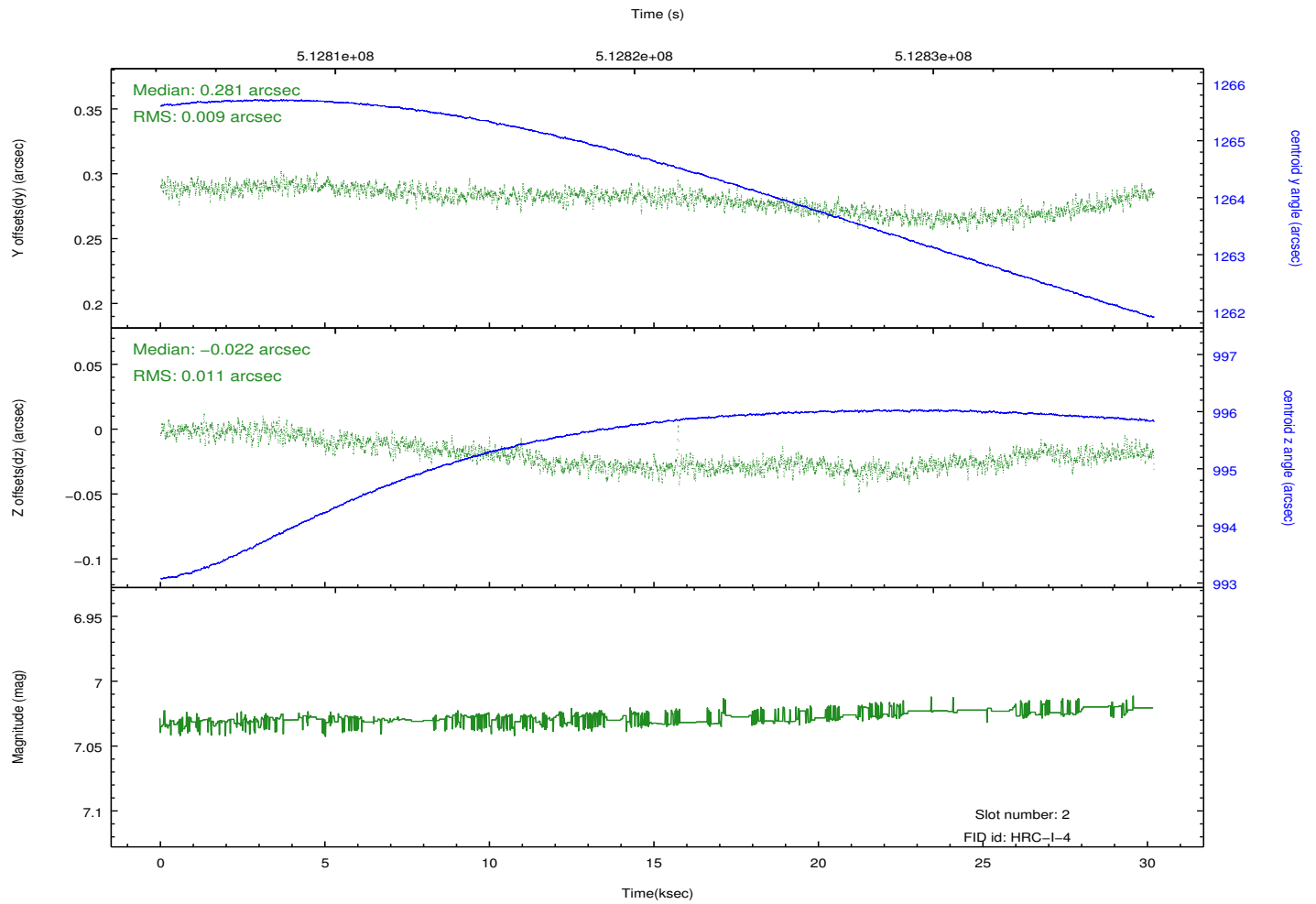
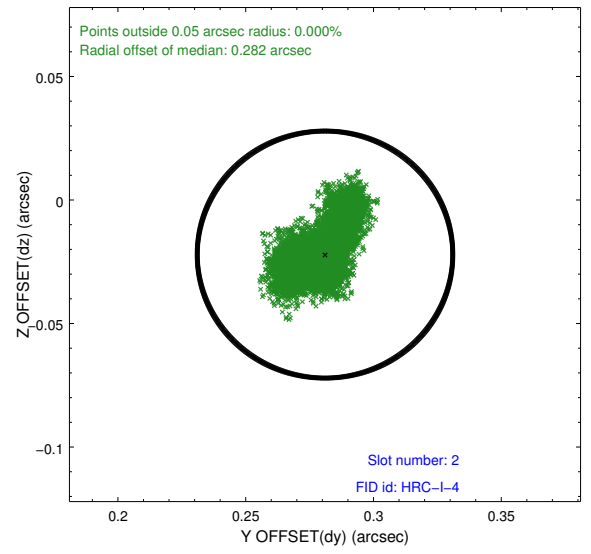
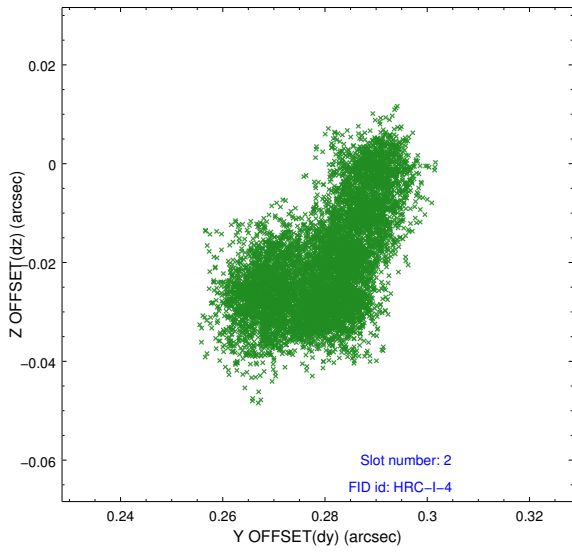
2.5.1 Slot 0



2.5.2 Slot 1



2.5.3 Slot 2



A Summary

A.1 Status

V&V Scientist	Beth Sundheim
V&V Date (YYYY-MM-DD)	2014.12.15
V&V Edition	1
V&V Disposition and Status	OK
V&V Charge Time	30.18522666508

A.2 Comments

These data have been reprocessed with new aspect alignment calibration files that correct small mean offsets (up to 0.4 arcsecs) and improve overall astrometric accuracy. The new calibration was determined using data from the time period being reprocessed and was performed using cross-correlation of X-ray sources with radio and optical counterparts.