

V&V Reference Report

L2 ASCDS Version : 10.2.4

Observation 16516 - L2 Version 1
Chandra X-Ray Center

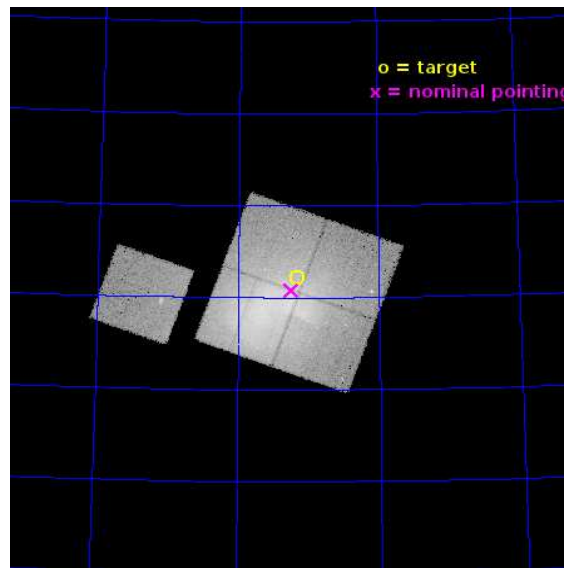
L2 Processing Date : Sep 28 2014

Contents

1	Front	2
2	OBI	3
2.1	OBI	3
2.1.1	Images	3
2.1.2	Bias	3
2.1.3	Parameters	4
2.1.4	Events	4
2.2	Compared Parameters	5
2.3	Aspect	6
2.4	Star Slots	9
2.4.1	Slot 3	9
2.4.2	Slot 4	10
2.4.3	Slot 5	11
2.4.4	Slot 6	12
2.4.5	Slot 7	13
2.5	FID Slots	14
2.5.1	Slot 0	14
2.5.2	Slot 1	15
2.5.3	Slot 2	16
A	Summary	17
A.1	Status	17
A.2	Comments	17

1 Front

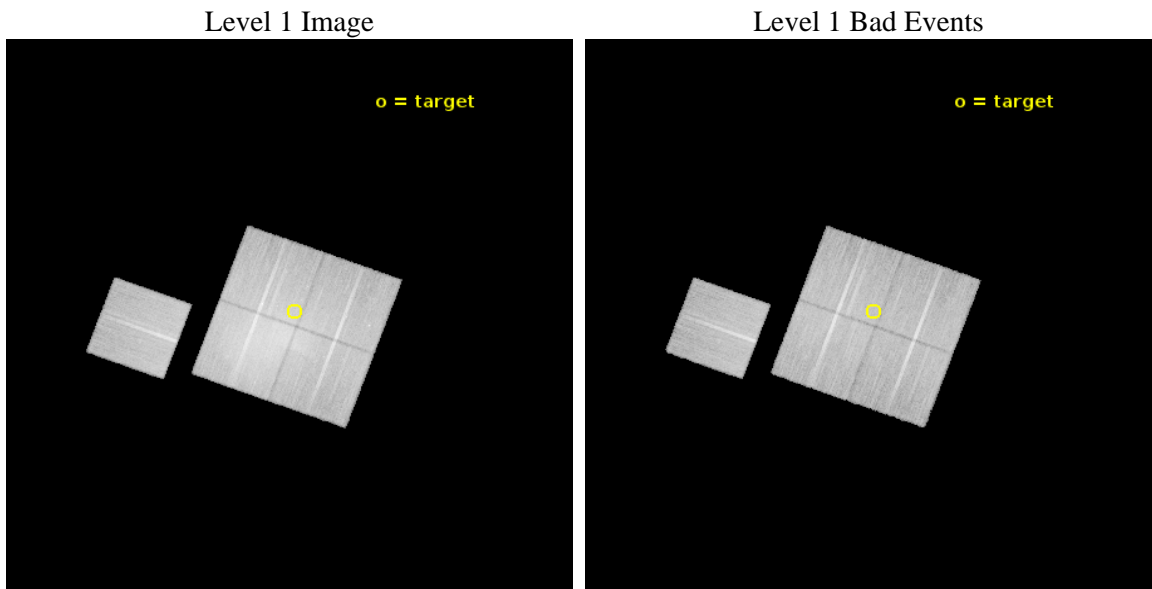
seq_num	801383	Sequence number
obs_id	16516	Observation id
title	Abell 2256: New paradigms for thermal/relativistic interactions?	P
observer	Dr. LAWRENCE RUDNICK	Principal investigator
object	Abell 2256	Source name
dtcycle	0	
cycle	P	events from which exps? Prim/Second/Both
ra_targ	255.722987	Observer's specified target RA [deg]
dec_targ	78.702428	Observer's specified target Dec [deg]
ra_nom	255.77748535111	Nominal RA [deg]
dec_nom	78.680266164599	Nominal Dec [deg]
roll_nom	290.15524359405	Nominal Roll [deg]
revision	1	Processing version of data
ontime	45082.817246318	Sum of GTIs [s]
livetime	44493.777049508	Livetime [s]
ontime0	45079.553155959	Sum of GTIs [s]
ontime1	45073.312235355	Sum of GTIs [s]
ontime2	45082.776206315	Sum of GTIs [s]
ontime3	45082.817246318	Sum of GTIs [s]
ontime6	45082.653086305	Sum of GTIs [s]
l2events	318642	Number of level 2 events



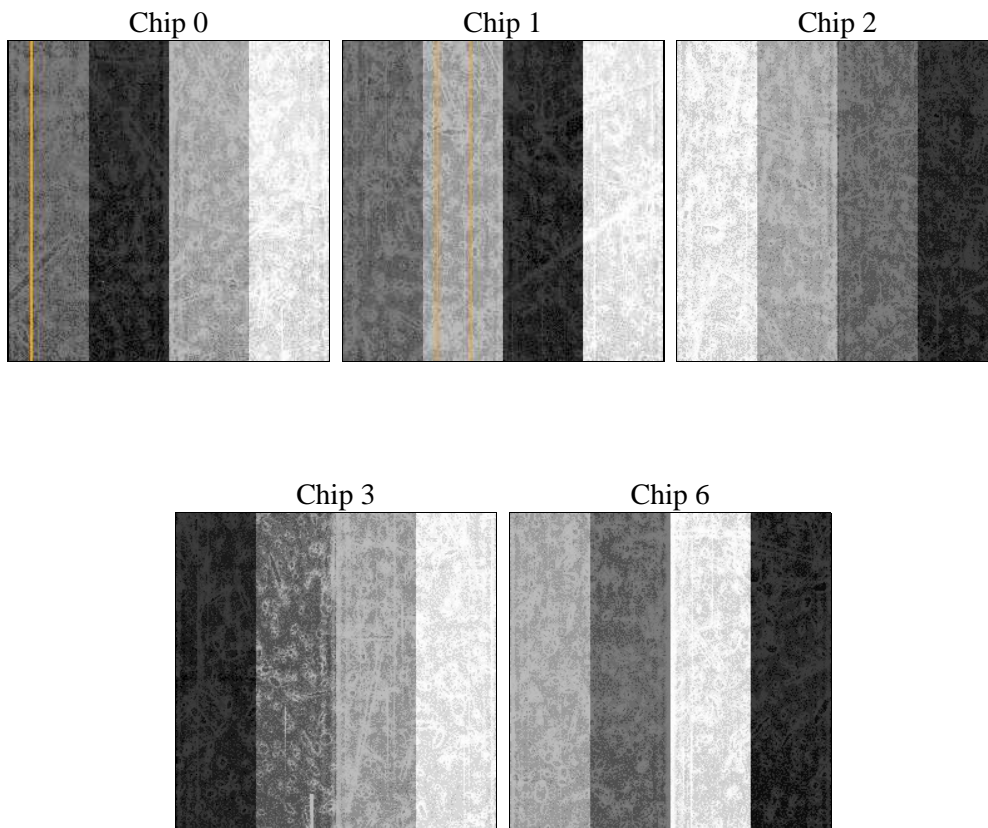
2 OBI

2.1 OBI

2.1.1 Images



2.1.2 Bias



2.1.3 Parameters

obi_num	0	Obi number	sched_exp_time	45000.000000	[s] Scheduled observation exposure time
ascdsver	10.2.4	Processing system revision	ontime	45082.817246318	Sum of GTIs [s]
caldbver	4.6.3	 	ontime0	45079.553155959	Sum of GTIs [s]
date	2014-09-28T17:50:20	Date and time of file creation	ontime1	45073.312235355	Sum of GTIs [s]
revision	1	Processing version of data	ontime2	45082.776206315	Sum of GTIs [s]
			ontime3	45082.817246318	Sum of GTIs [s]
			ontime6	45082.653086305	Sum of GTIs [s]
			l1events	1292778	Number of level 1 events

2.1.4 Events

	ccd 0	ccd 1	ccd 2	ccd 3	ccd 6
level 1 events	243196	225732	357864	243601	222385
rejected events	173574	178484	204795	190351	190376
rejected %	71%	79%	57%	78%	85%

	ccd 0	ccd 1	ccd 2	ccd 3	ccd 6
grade 0 events	44283	25289	111713	32002	13948
	18%	11%	31%	13%	6%
grade 1 events	236	181	578	227	132
	0%	0%	0%	0%	0%
grade 2 events	11160	8650	19457	8563	6578
	4%	3%	5%	3%	2%
grade 3 events	4010	3454	6815	3491	2883
	1%	1%	1%	1%	1%
grade 4 events	3888	3382	6647	3541	2800
	1%	1%	1%	1%	1%
grade 5 events	8763	9362	8530	10012	9434
	3%	4%	2%	4%	4%
grade 6 events	6286	6477	8447	5653	5801
	2%	2%	2%	2%	2%
grade 7 events	164570	168937	195677	180112	180809
	67%	74%	54%	73%	81%

2.2 Compared Parameters

Parameter	Planned	Actual	Parameter	Planned	Actual
Instrument	ACIS	ACIS	Obspar format version number	7	7
Detector	ACIS-01236	ACIS-01236	Obspar file type	PREDICTED	ACTUAL
Grating	NONE	NONE	Obspar update status	NONE	UPDATED
Data mode	VFAINT	VFAINT	Number of optional ACIS chips dropped	0	0
Observation mode	POINTING	POINTING	On-chip summing requested	N	N
[deg] Pointing RA	255.669040	255.7774853511089	Subarray requested	NONE	NONE
[deg] Pointing Dec	78.697866	78.68026616459879	Alternating exposures requested	N	N
[deg] Pointing Roll	290.052898	290.1552435940463	[s] Primary exposure time	0.000000	3.1
[mm] SIM focus pos	-0.782348	-0.7809083437167272			
[mm] SIM defocus	0	0.001439871863259334			
[mm] SIM translation stage pos	-233.592463	-233.5874344608287			
[mm] SIM translation stage offset	0	-0.005018542100998502			
[s] Observation start time (MET)	528093600.184000	528092633.79893			
Observation start date	2014-09-26T04:38:53	2014-09-26T04:23:53			
[s] Observation end time (MET)	528138600.184000	528139652.60154			
Observation end date	2014-09-26T17:08:53	2014-09-26T17:27:32			
Read mode	TIMED	TIMED			

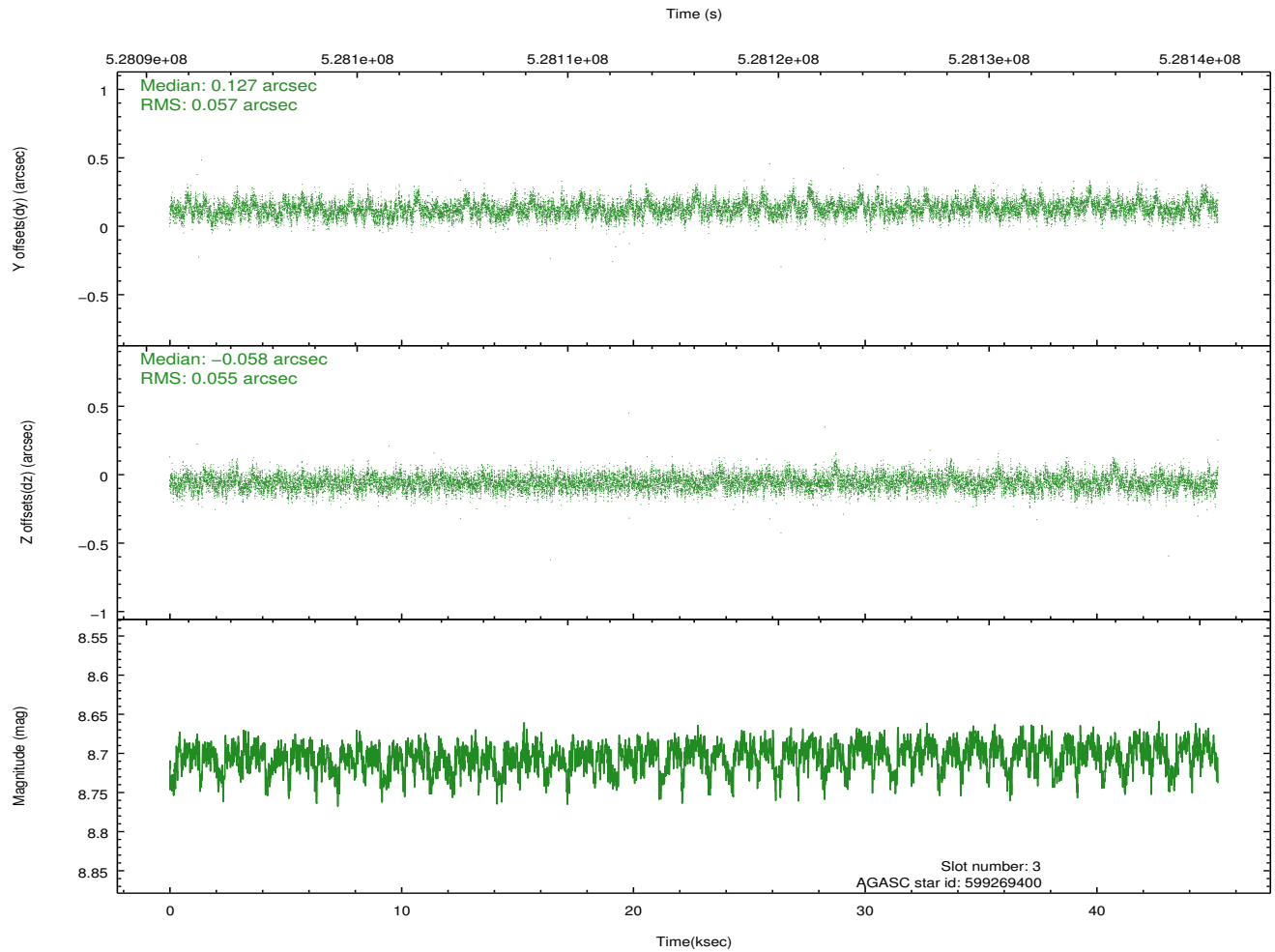
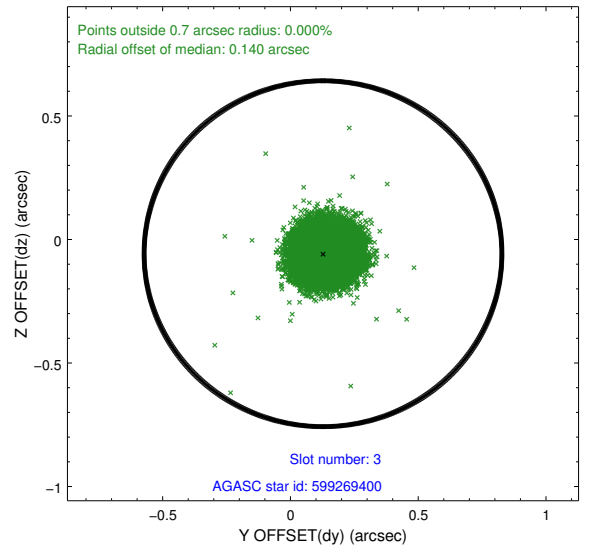
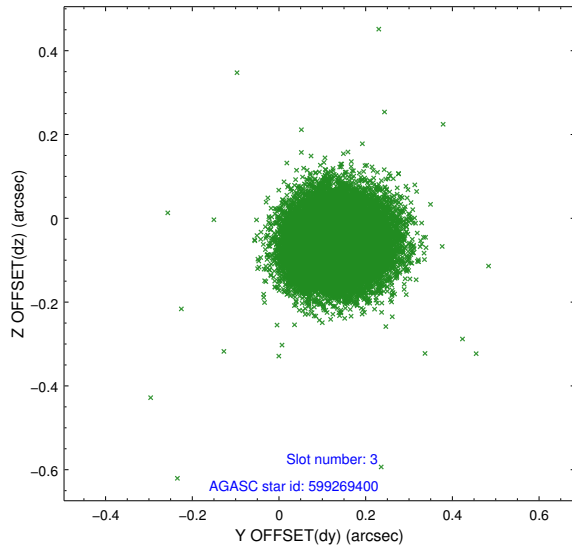
2.3 Aspect

Slot Statistics

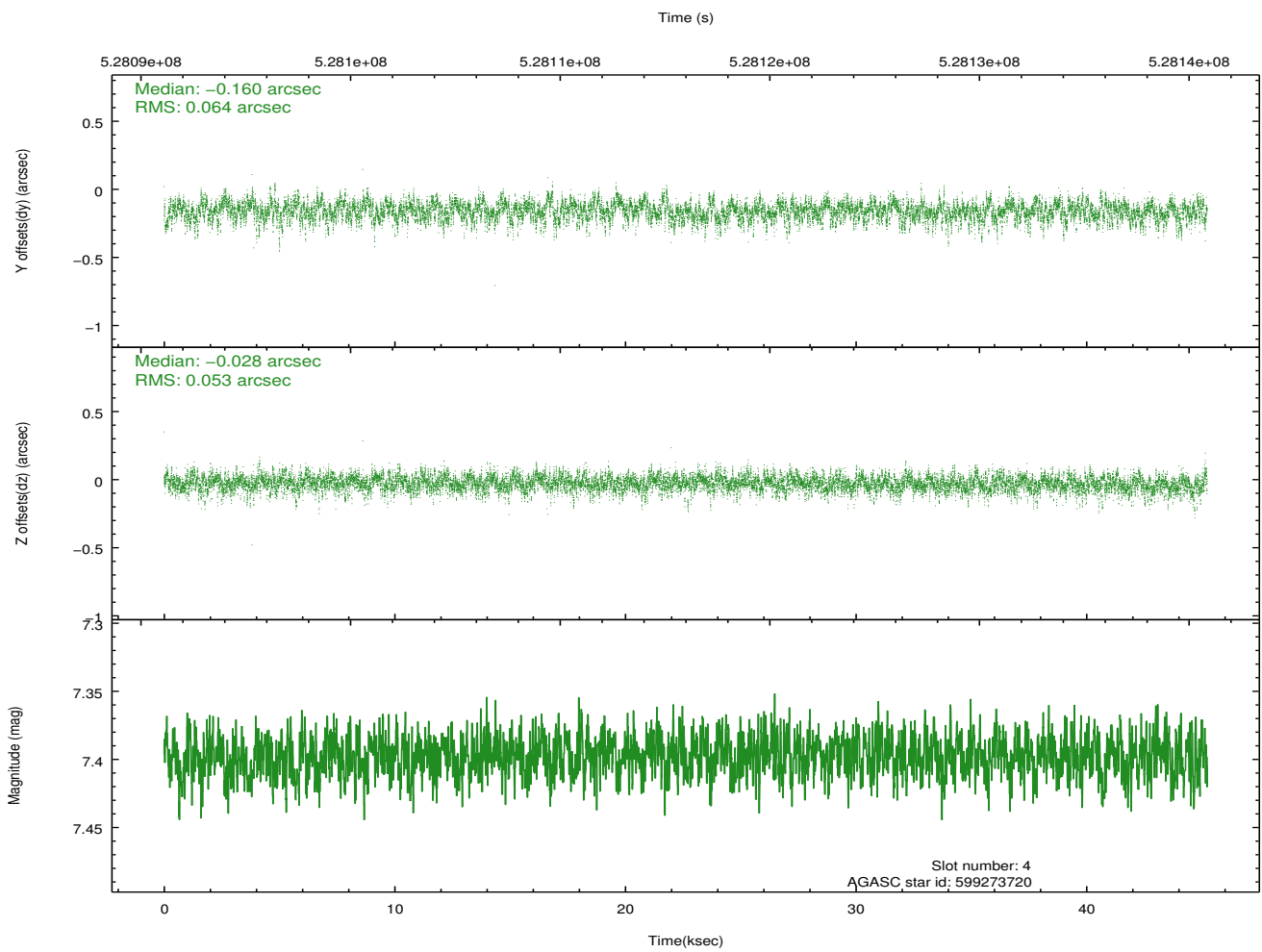
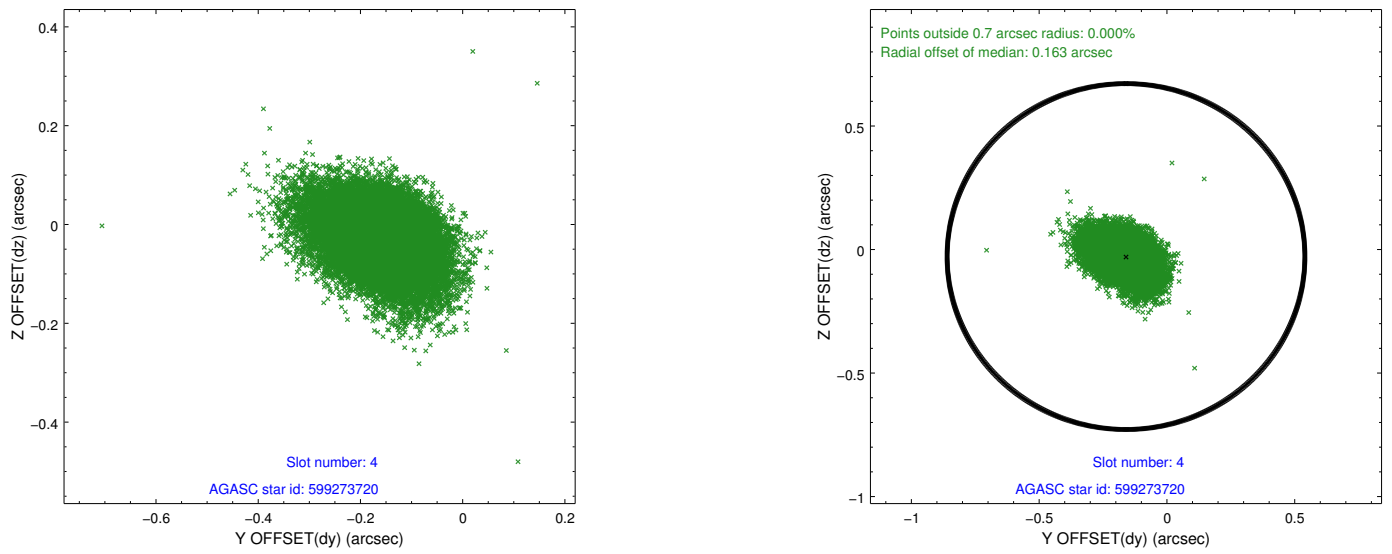
slot	status	id	mag	n_pts	med_dy	med_dz	dr1	dr2	ra	dec	mean_y	mean_z
0	FID	ACIS-I-1	7.08	11033	0.048	-0.010	0.025	0.036	0.000000	0.000000	917.00	-844.32
1	FID	ACIS-I-5	7.06	11033	-0.260	0.039	0.020	0.031	0.000000	0.000000	-1831.47	1053.15
2	FID	ACIS-I-6	7.07	11032	0.123	0.041	0.012	0.019	0.000000	0.000000	382.55	1697.70
3	GUIDE	599269400	8.70	22059	0.127	-0.058	0.084	0.136	254.398050	78.499006	351.02	-1098.43
4	GUIDE	599273720	7.40	22064	-0.160	-0.028	0.085	0.149	253.963949	77.959699	2040.31	-2106.79
5	GUIDE	599787608	9.13	21985	-0.041	-0.272	0.117	0.195	257.703985	79.464091	-2154.57	2211.83
6	GUIDE	599789480	8.83	22052	0.034	0.135	0.105	0.172	253.845424	78.947438	-1293.92	-866.58
7	GUIDE	599790040	9.04	22049	0.040	0.220	0.100	0.162	252.479590	78.878159	-1425.02	-1835.69

2.4 Star Slots

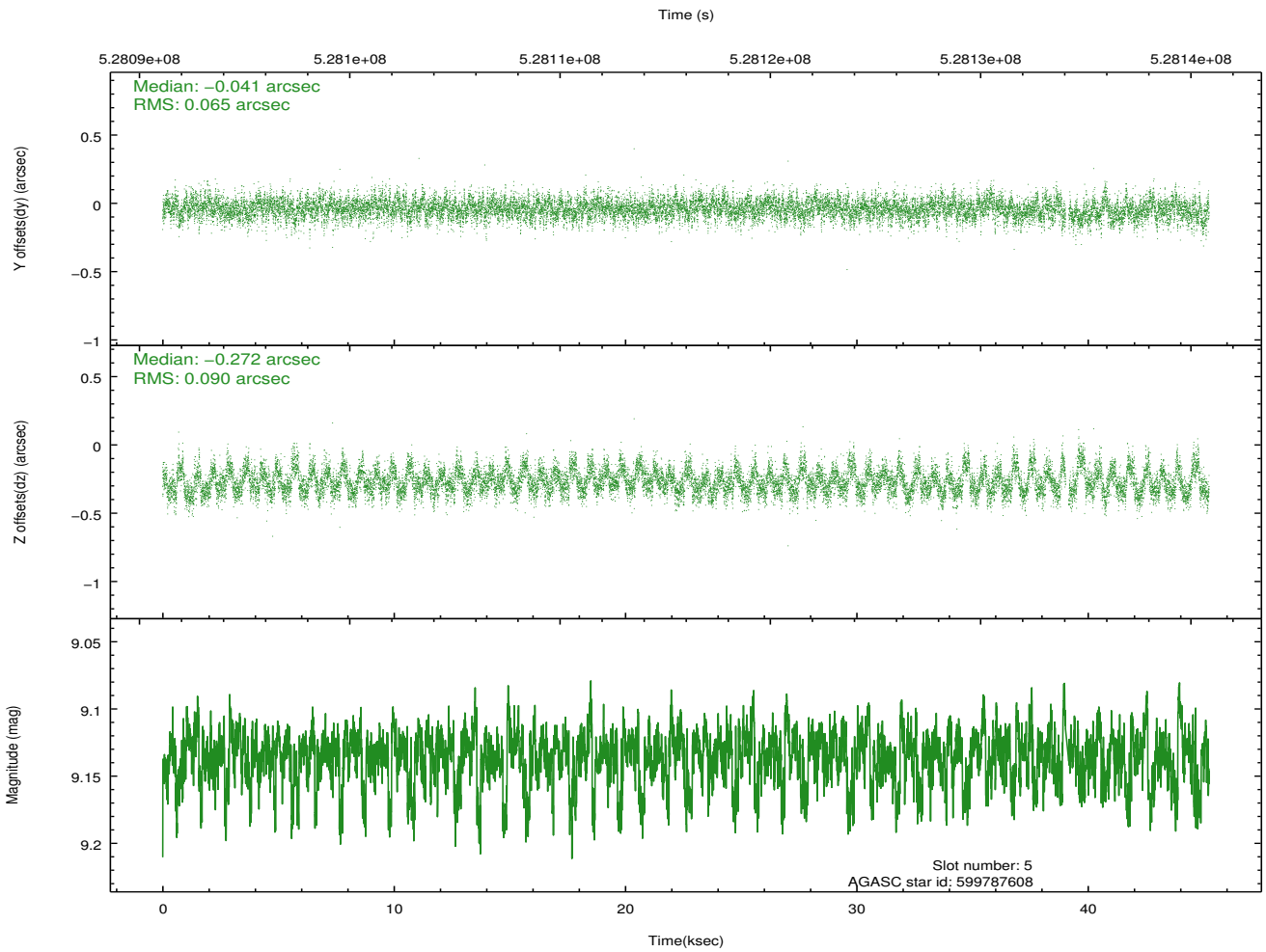
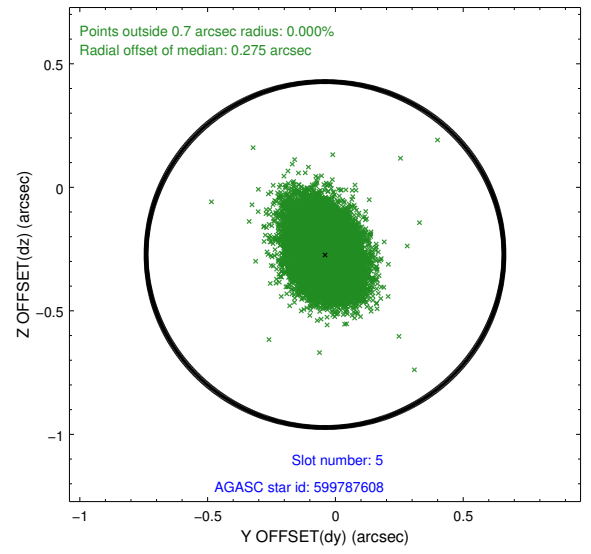
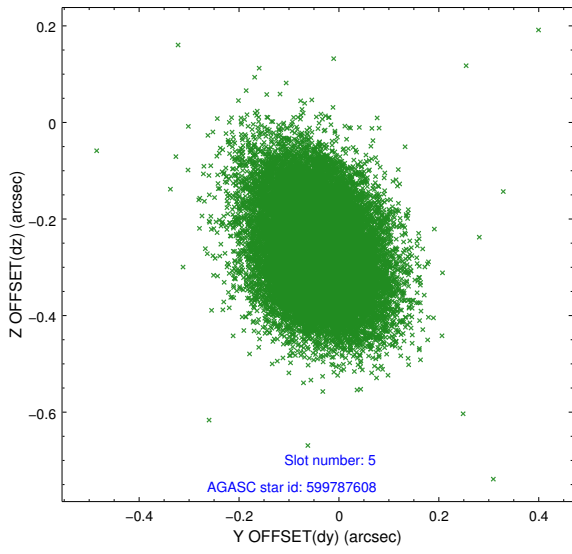
2.4.1 Slot 3



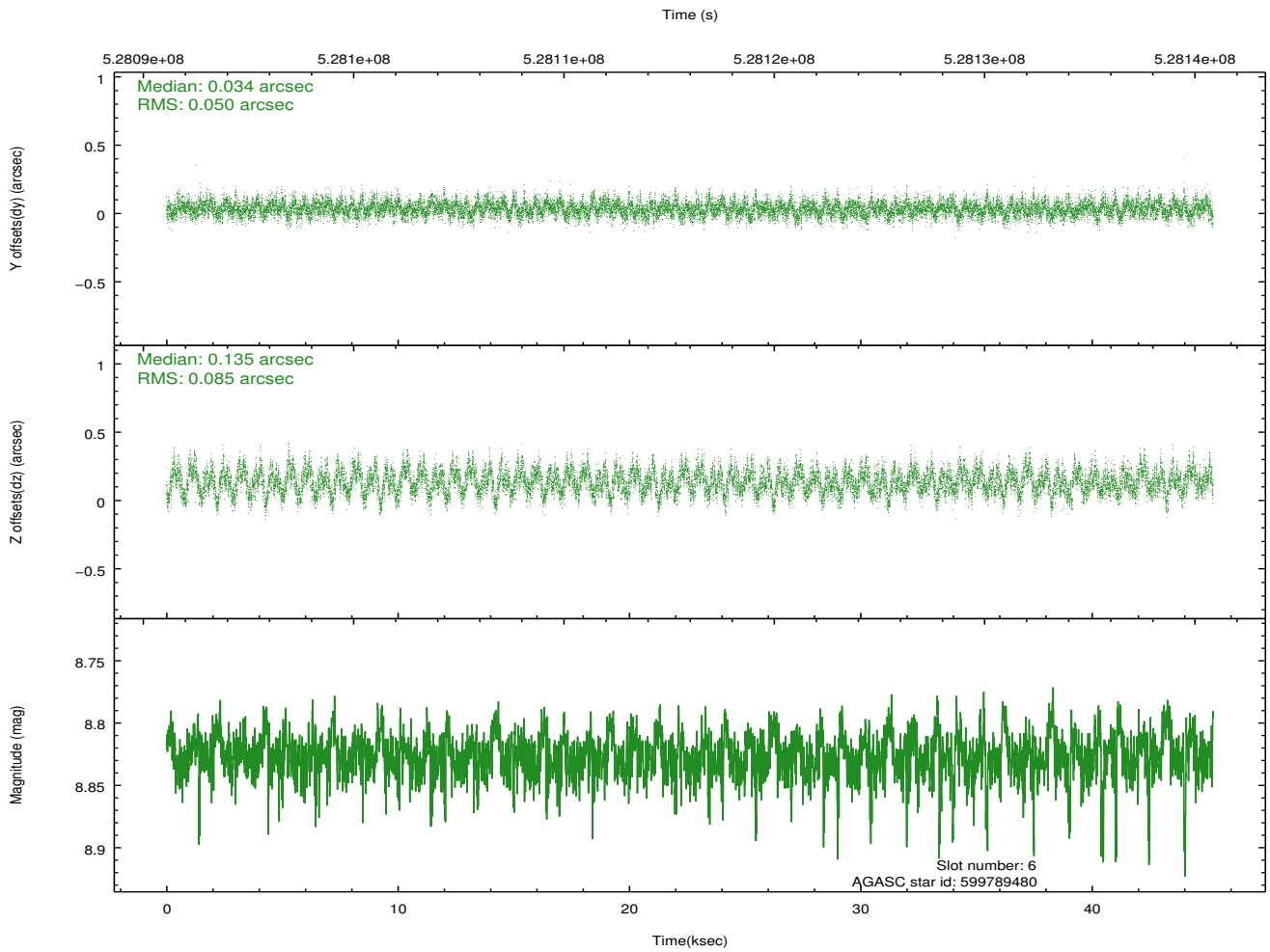
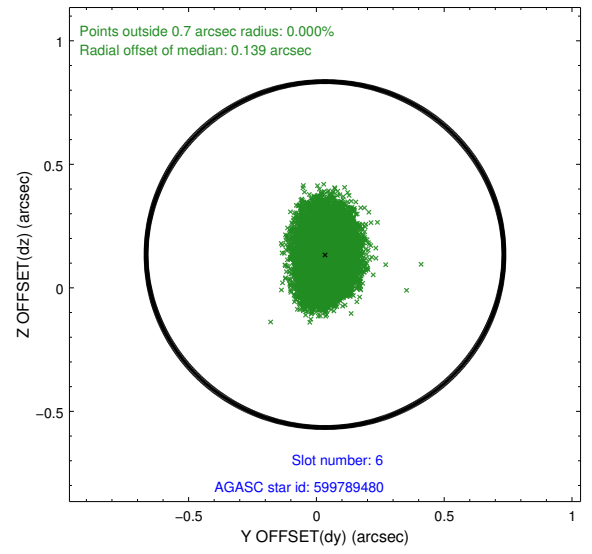
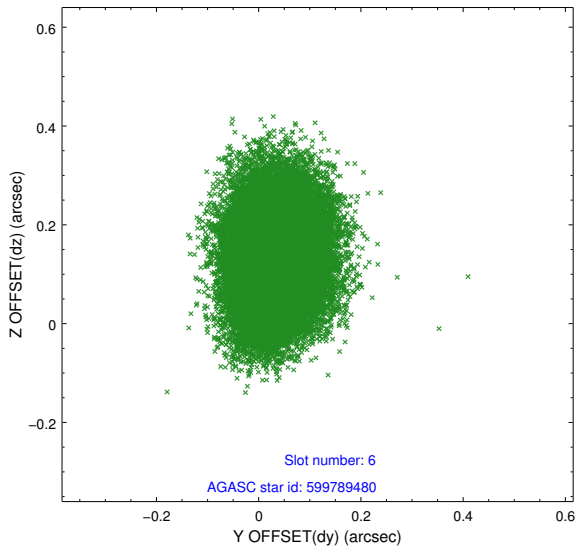
2.4.2 Slot 4



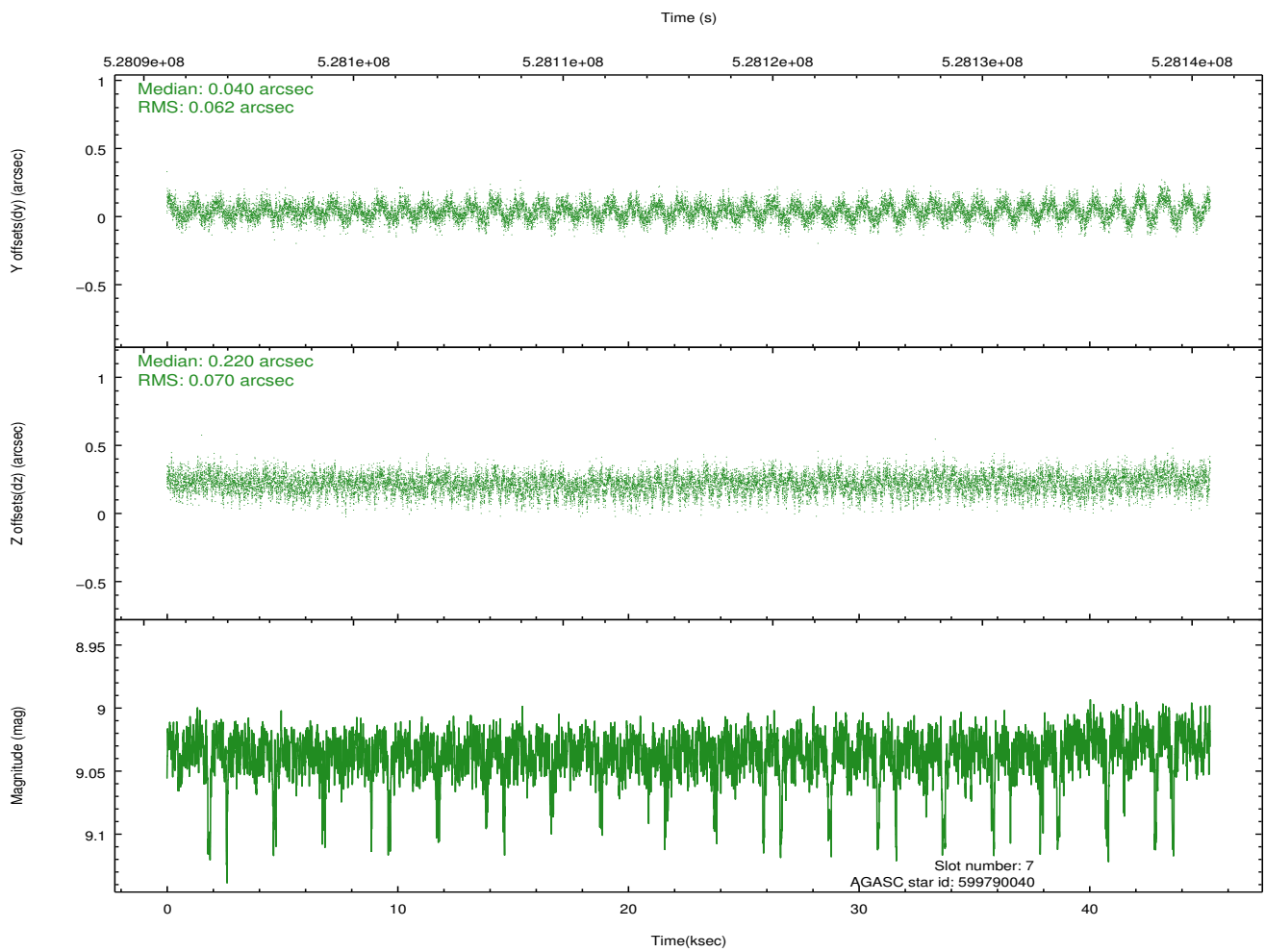
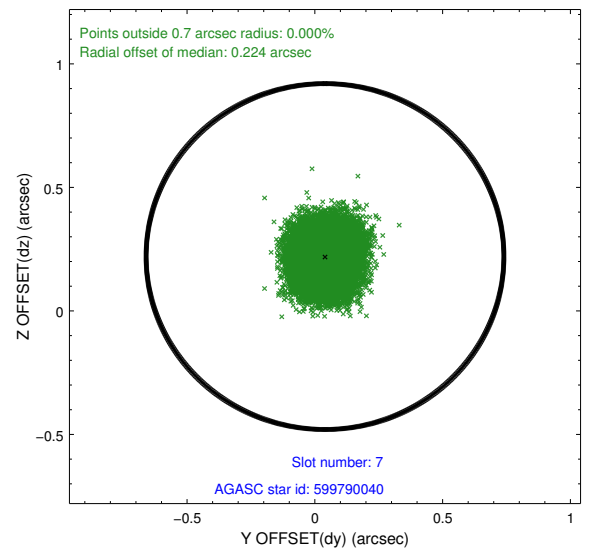
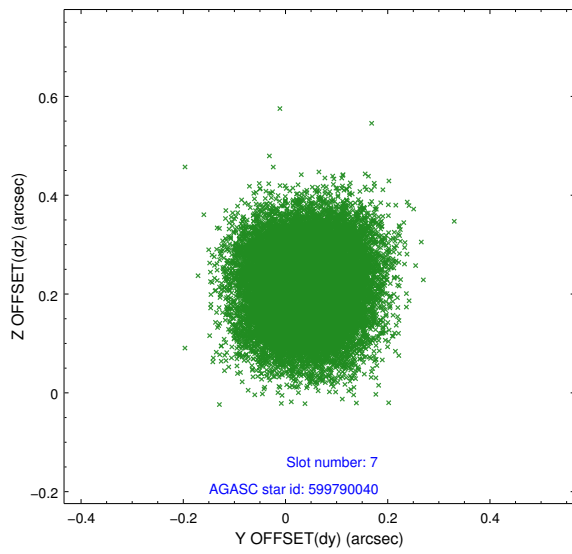
2.4.3 Slot 5



2.4.4 Slot 6

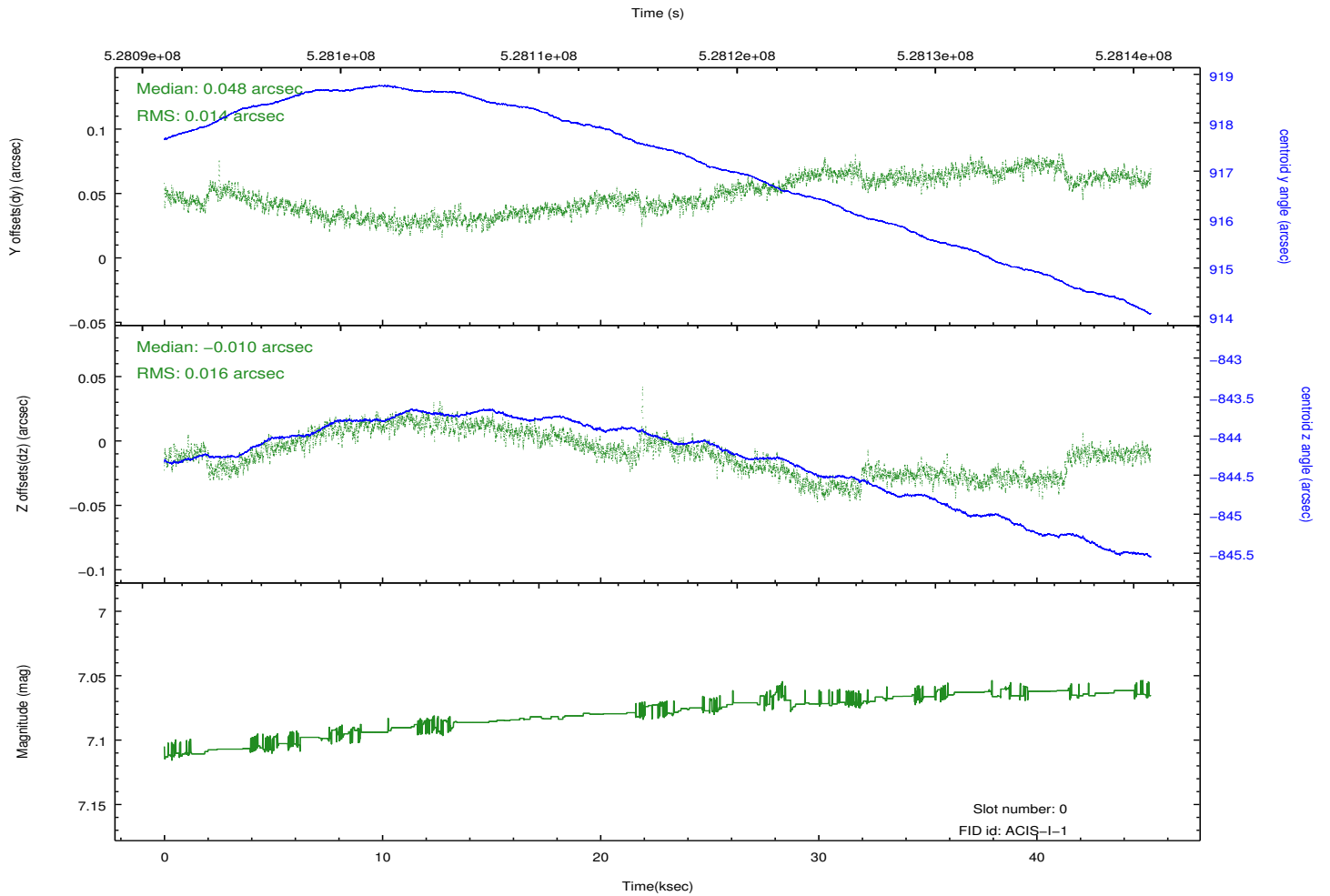
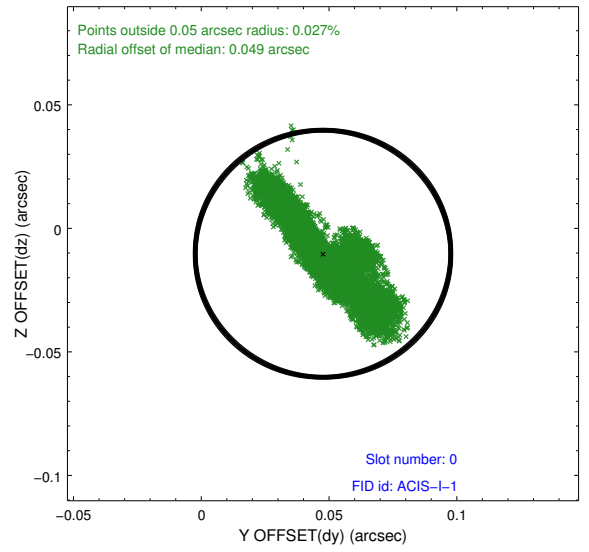
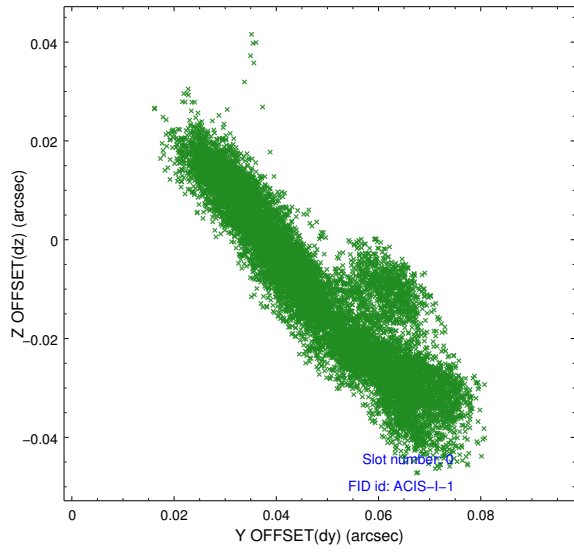


2.4.5 Slot 7

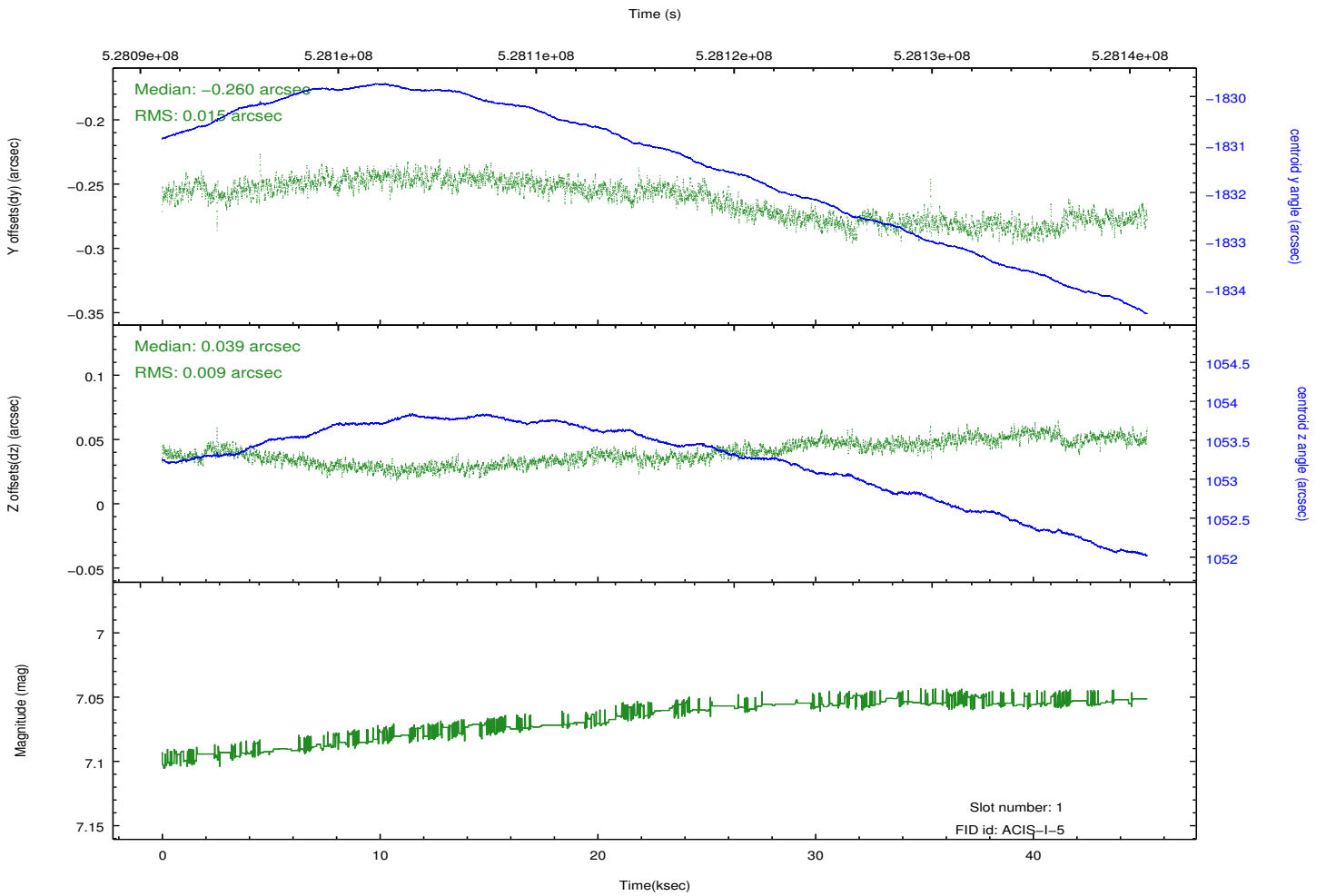
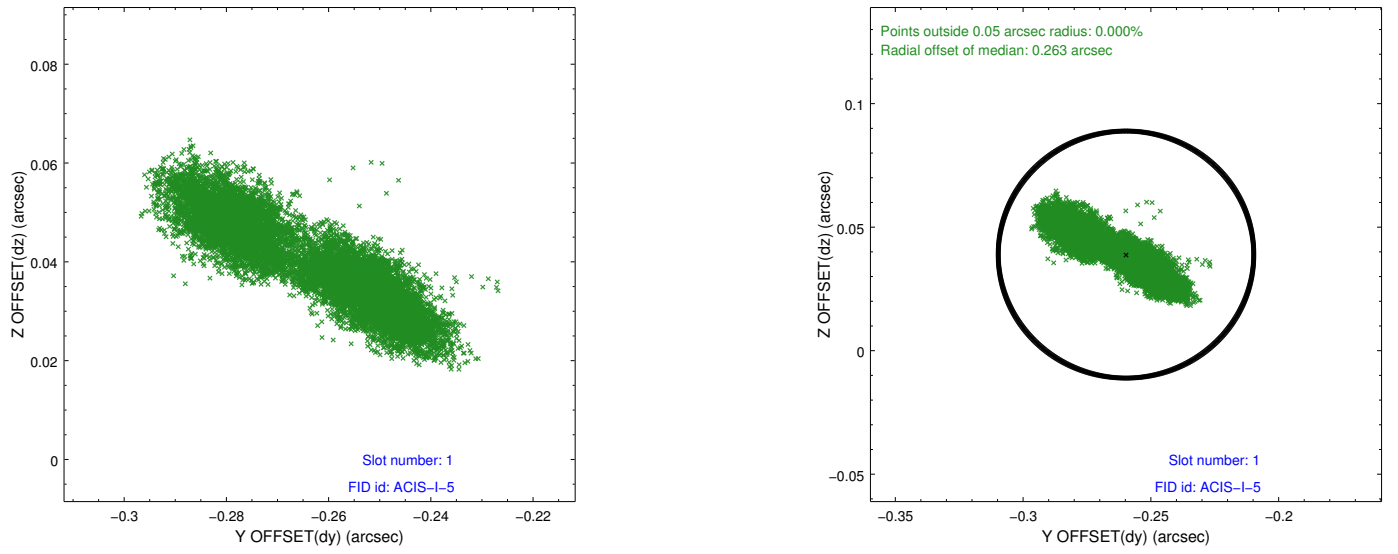


2.5 FID Slots

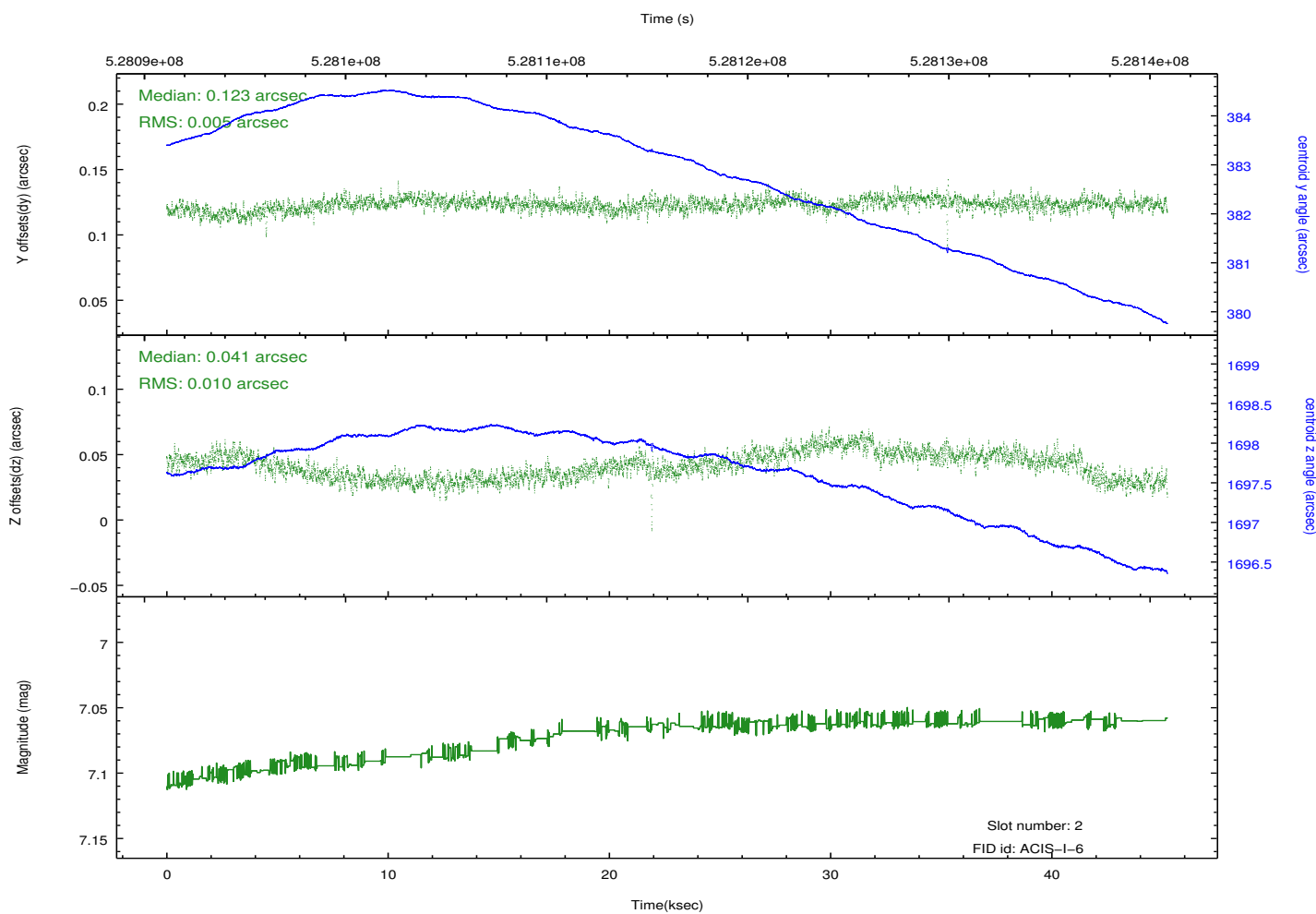
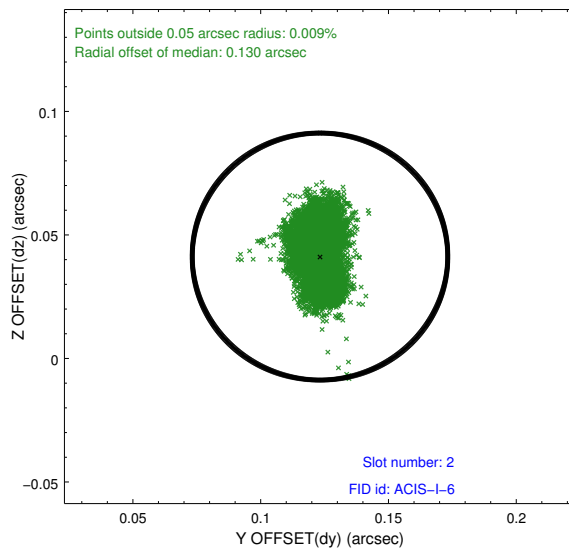
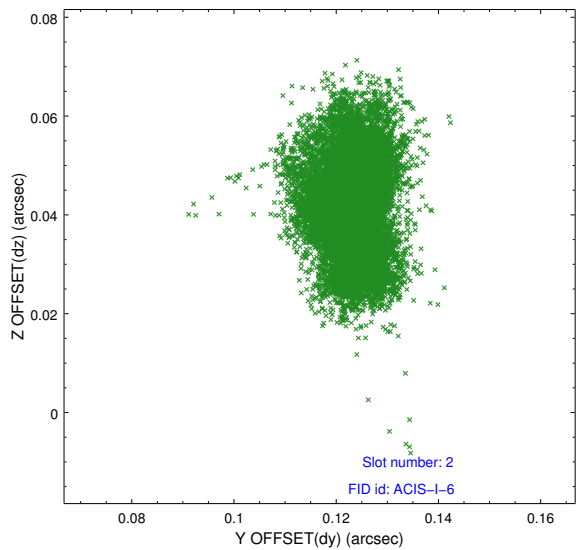
2.5.1 Slot 0



2.5.2 Slot 1



2.5.3 Slot 2



A Summary

A.1 Status

V&V Scientist	Beth Sundheim
V&V Date (YYYY-MM-DD)	2014.09.28
V&V Edition	1
V&V Disposition and Status	OK
V&V Charge Time	45.082817246318

A.2 Comments