

V&V Reference Report

L2 ASCDS Version : 8.4.5

Observation 1656 - L2 Version 3
Chandra X-Ray Center

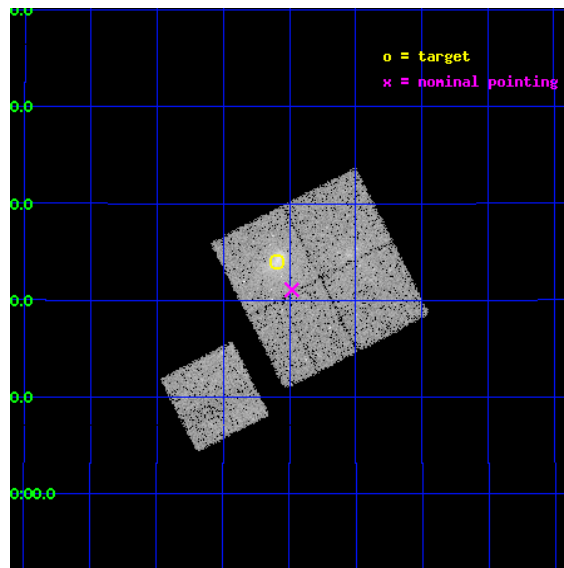
L2 Processing Date : Sep 17 2012

Contents

1	Front	2
2	OBI	3
2.1	OBI	3
2.1.1	Images	3
2.1.2	Bias	3
2.1.3	Parameters	4
2.1.4	Events	4
2.2	Compared Parameters	5
2.3	Aspect	6
2.4	Star Slots	9
2.4.1	Slot 3	9
2.4.2	Slot 4	10
2.4.3	Slot 5	11
2.4.4	Slot 6	12
2.4.5	Slot 7	13
2.5	FID Slots	14
2.5.1	Slot 0	14
2.5.2	Slot 1	15
2.5.3	Slot 2	16
A	Summary	17
A.1	Status	17
A.2	Comments	17

1 Front

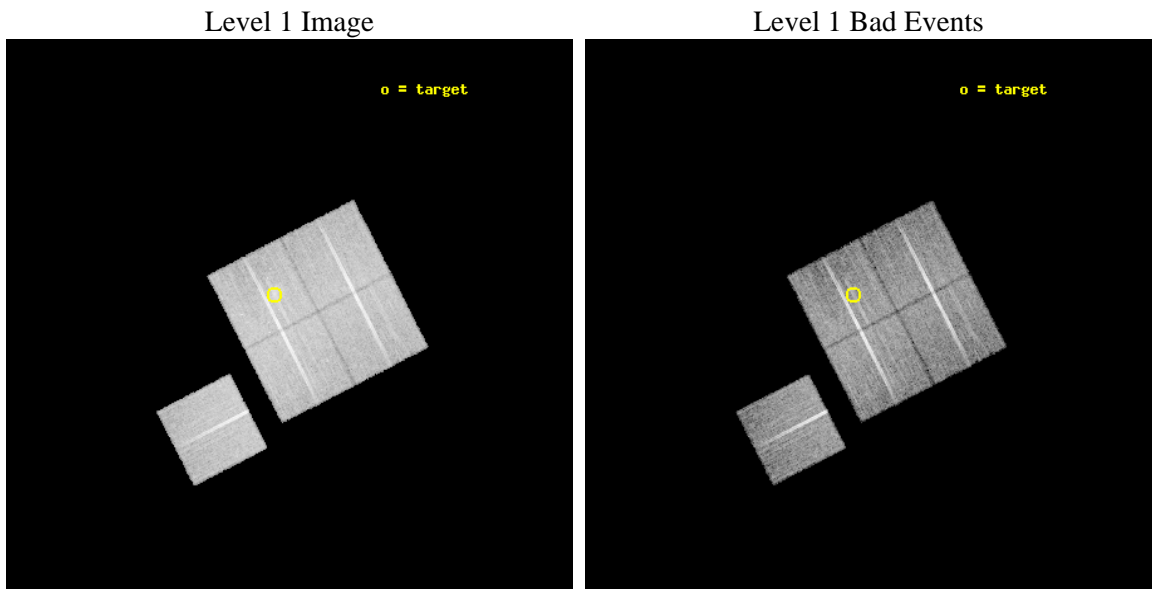
seq_num	800124	Sequence number
obs_id	1656	Observation id
title	DETERMINATION OF H0 AND Q0, 2000 PART 2	Proposal title
observer	DR. LEON VANSPEYBROECK	Principal investigator
object	MACS J1149.5+2223	Source name
dtycycle	0	
cycle	P	events from which exps? Prim/Second/Both
ra_targ	177.399167	Observer's specified target RA [deg]
dec_targ	22.399	Observer's specified target Dec [deg]
ra_nom	177.37035547082	Nominal RA [deg]
dec_nom	22.351540304737	Nominal Dec [deg]
roll_nom	242.83378610832	Nominal Roll [deg]
revision	3	Processing version of data
ontime	18770.020423338	Sum of GTIs [s]
livetime	18524.776288219	Livetime [s]
ontime0	18773.038263574	Sum of GTIs [s]
ontime1	18773.079303563	Sum of GTIs [s]
ontime2	18763.697442919	Sum of GTIs [s]
ontime3	18770.020423338	Sum of GTIs [s]
ontime6	18772.997223571	Sum of GTIs [s]
l2events	66697	Number of level 2 events



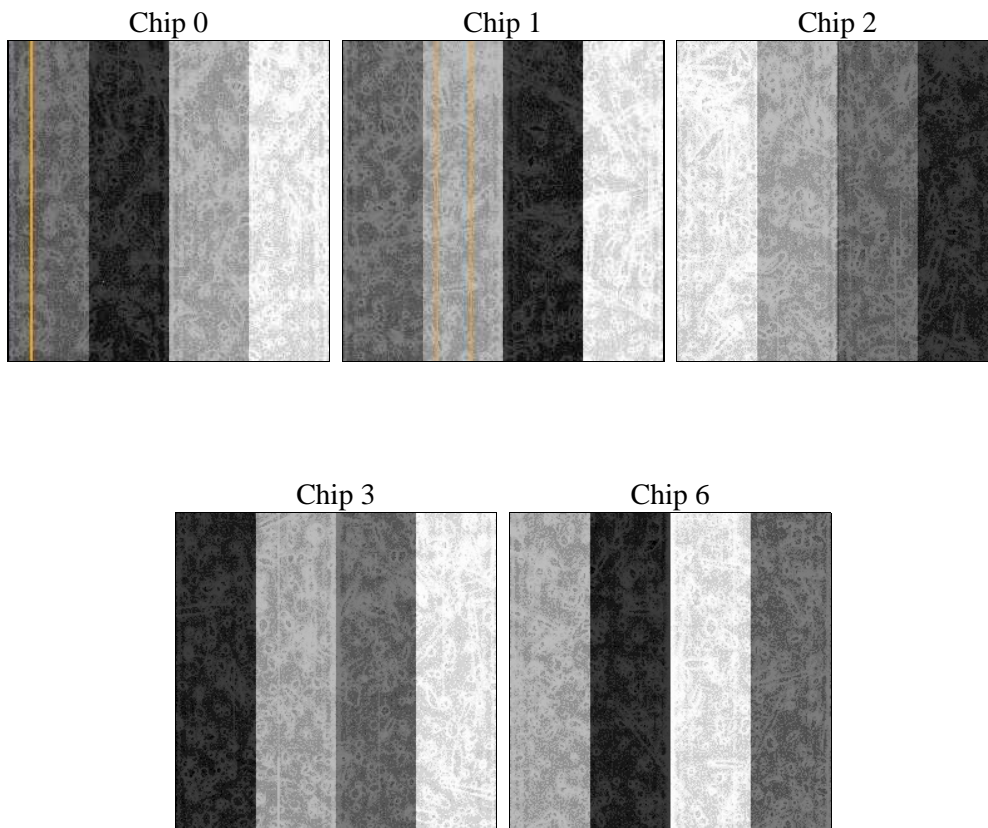
2 OBI

2.1 OBI

2.1.1 Images



2.1.2 Bias



2.1.3 Parameters

obi_num	0	Obi number	sched_exp_time	19000.000000	[s] Scheduled observation exposure time
ascdsver	8.4.5	Processing system revision	ontime	18770.020423338	Sum of GTIs [s]
caldbver	4.5.1.1	 	ontime0	18773.038263574	Sum of GTIs [s]
date	2012-09-17T01:45:21	Date and time of file creation	ontime1	18773.079303563	Sum of GTIs [s]
revision	3	Processing version of data	ontime2	18763.697442919	Sum of GTIs [s]
			ontime3	18770.020423338	Sum of GTIs [s]
			ontime6	18772.997223571	Sum of GTIs [s]
			l1events	606773	Number of level 1 events

2.1.4 Events

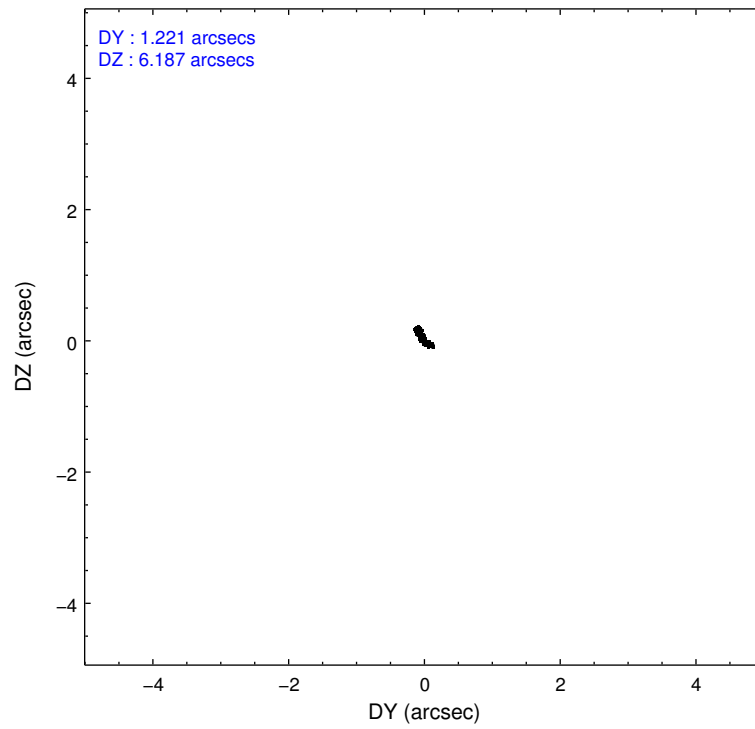
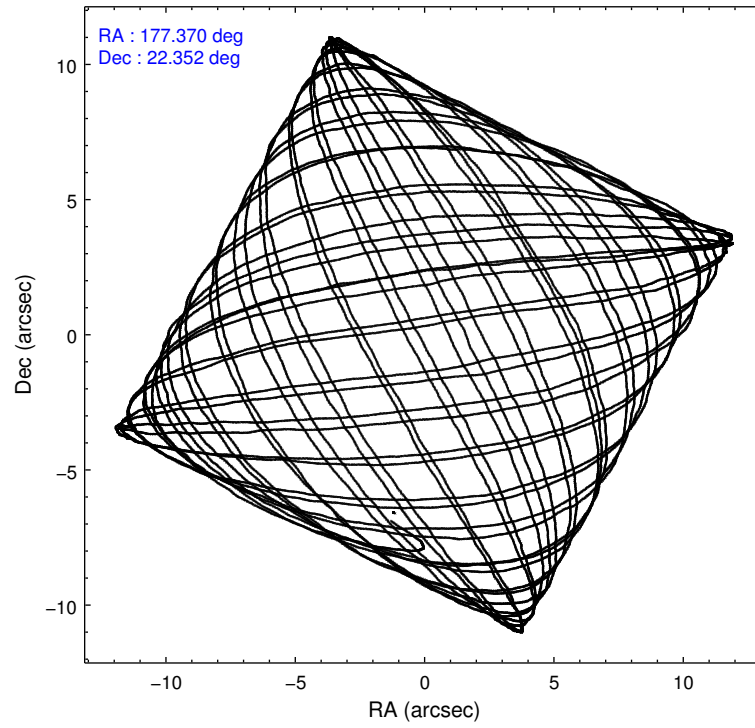
	ccd 0	ccd 1	ccd 2	ccd 3	ccd 6
level 1 events	112604	115094	127897	129347	121831
rejected events	97941	99845	113874	109920	107834
rejected %	86%	86%	89%	84%	88%

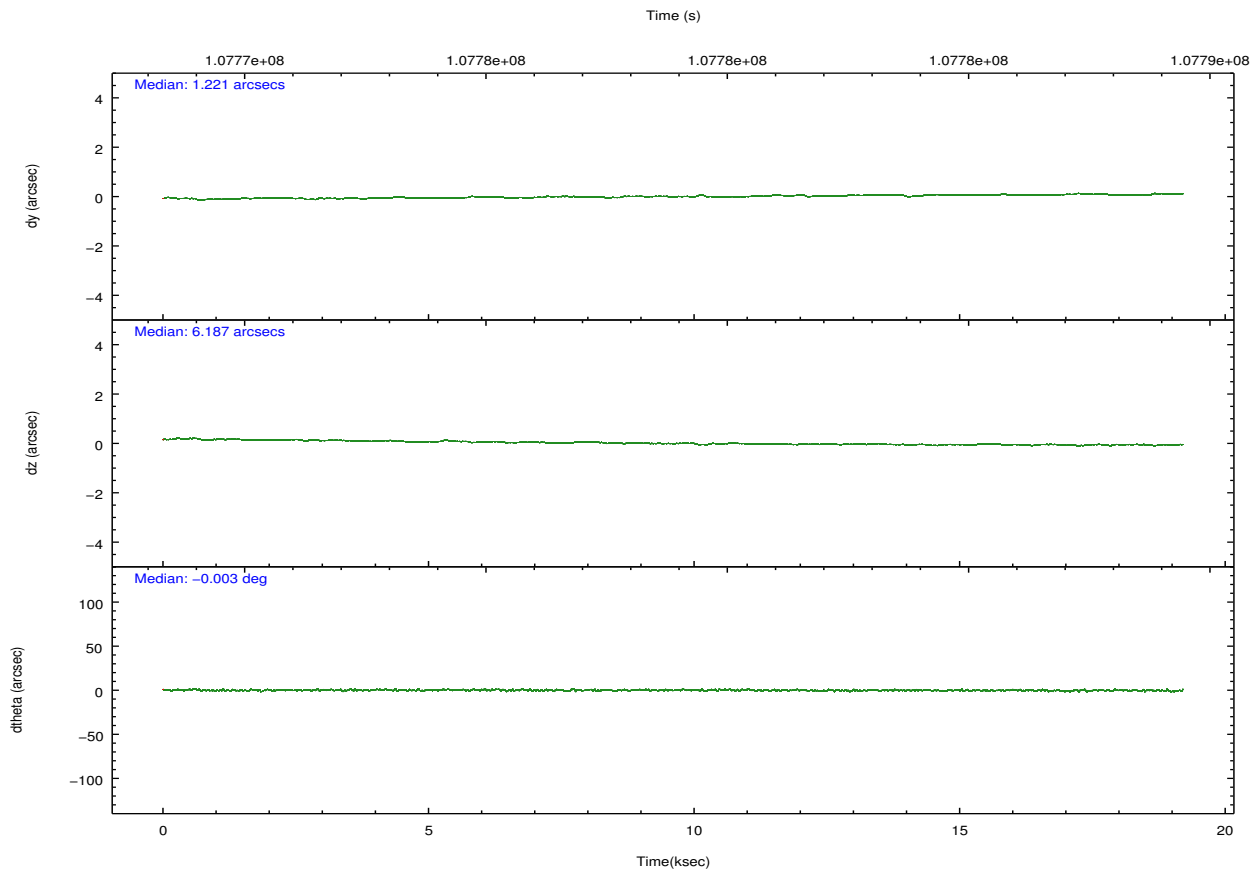
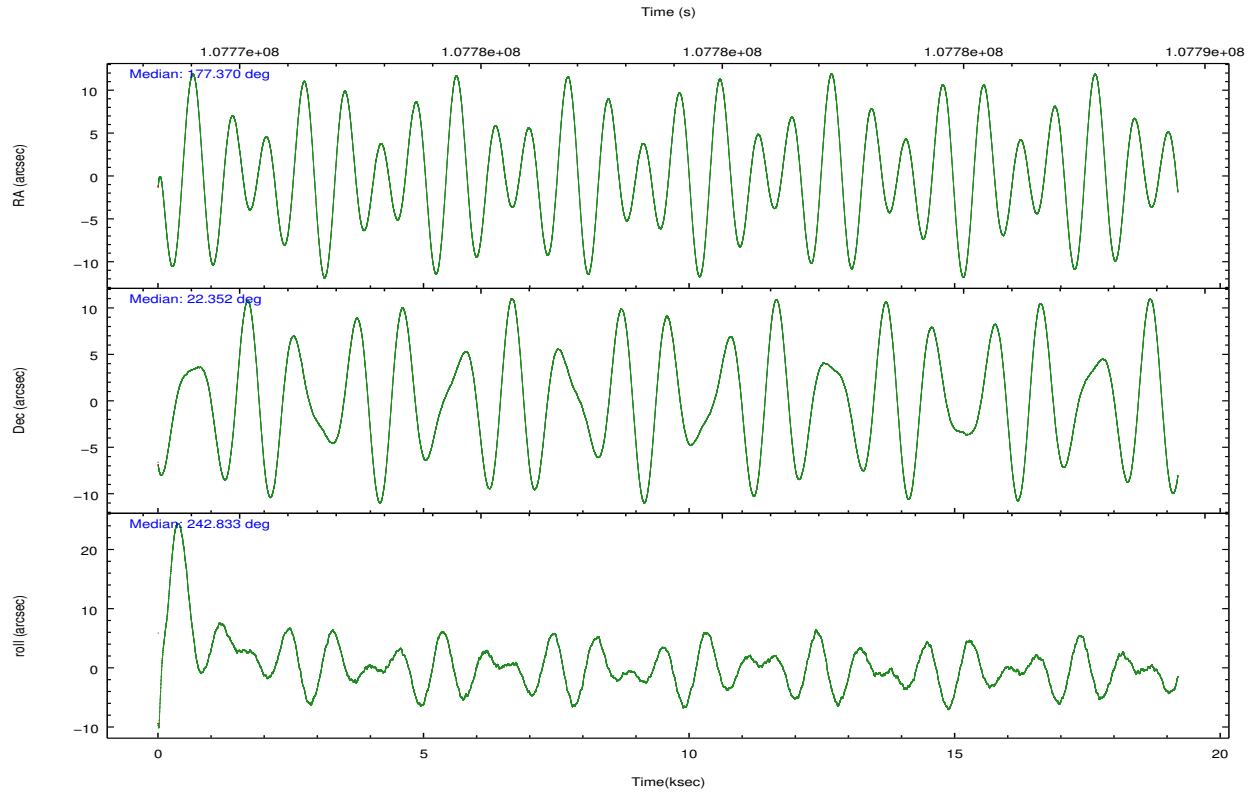
	ccd 0	ccd 1	ccd 2	ccd 3	ccd 6
grade 0 events	6359	6413	6041	10509	5757
	5%	5%	4%	8%	4%
grade 1 events	55	64	46	75	49
	0%	0%	0%	0%	0%
grade 2 events	2951	3017	2978	3293	2824
	2%	2%	2%	2%	2%
grade 3 events	1458	1550	1334	1524	1400
	1%	1%	1%	1%	1%
grade 4 events	1384	1463	1263	1499	1340
	1%	1%	0%	1%	1%
grade 5 events	4402	4630	4141	4767	4986
	3%	4%	3%	3%	4%
grade 6 events	2513	2811	2409	2608	2677
	2%	2%	1%	2%	2%
grade 7 events	93482	95146	109685	105072	102798
	83%	82%	85%	81%	84%

2.2 Compared Parameters

Parameter	Planned	Actual	Parameter	Planned	Actual
Instrument	ACIS	ACIS	Obspar format version number	7	7
Detector	ACIS-01236	ACIS-01236	Obspar file type	PREDICTED	ACTUAL
Grating	NONE	NONE	Obspar update status	NONE	UPDATED
Data mode	VFAINT	VFAINT	Number of optional ACIS chips dropped	0	0
Observation mode	POINTING	POINTING	On-chip summing requested	N	N
[deg] Pointing RA	177.368875	177.3703554708156	Subarray requested	NONE	NONE
[deg] Pointing Dec	22.378971	22.35154030473732	Alternating exposures requested	N	N
[deg] Pointing Roll	242.625668	242.8337861083239	[s] Primary exposure time	0.000000	3.1
[mm] SIM focus pos	-0.782348	-0.7809083437167272			
[mm] SIM defocus	0	0.001439871863259334			
[mm] SIM translation stage pos	-225.840463	-225.848371962627			
[mm] SIM translation stage offset	-7.752	-7.744081040302689			
[s] Observation start time (MET)	107769476.184000	107768908.65671			
Observation start date	2001-06-01T07:56:52	2001-06-01T07:48:28			
[s] Observation end time (MET)	107788476.184000	107789060.66999			
Observation end date	2001-06-01T13:13:32	2001-06-01T13:24:20			
Read mode	TIMED	TIMED			

2.3 Aspect



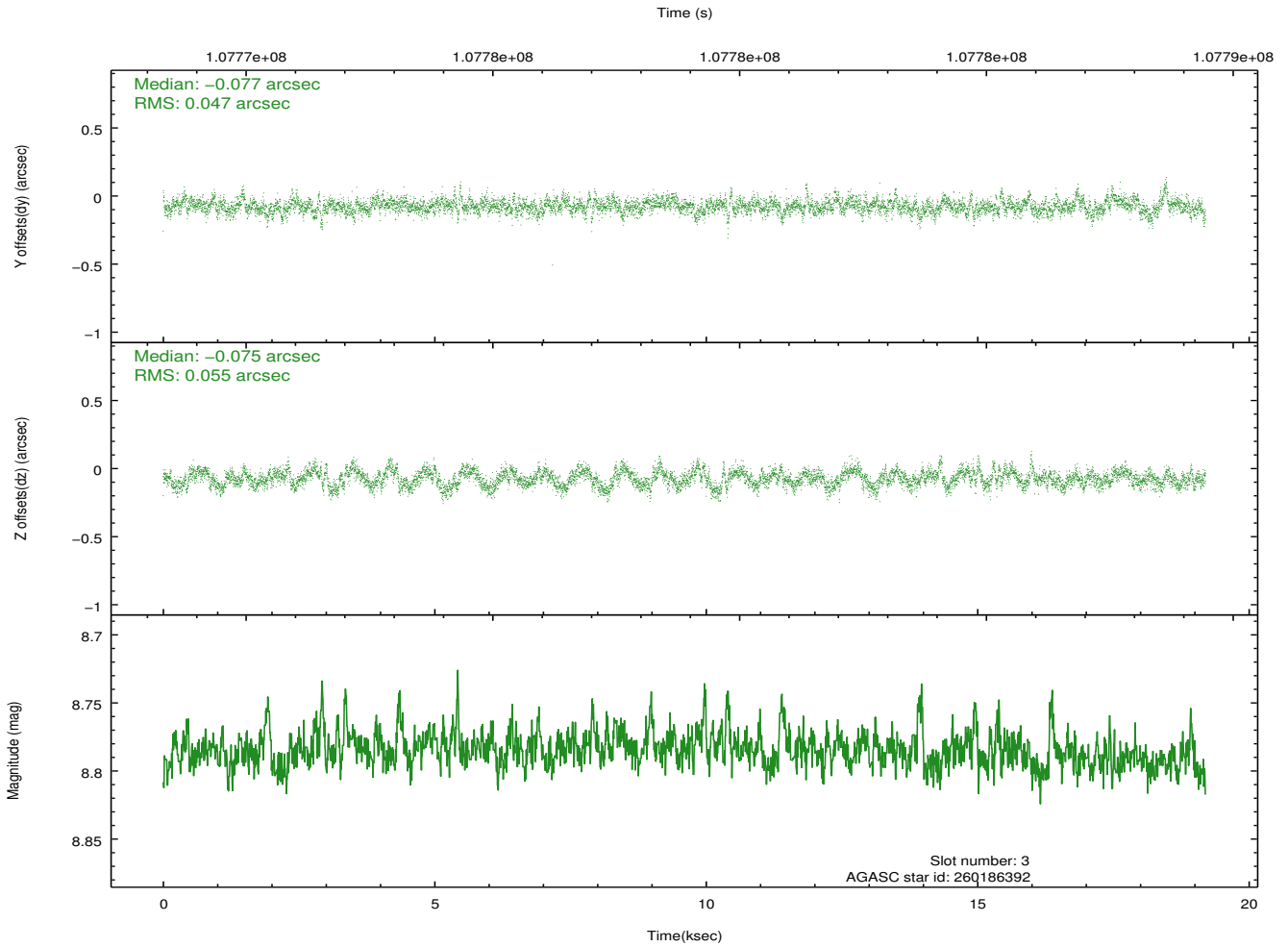
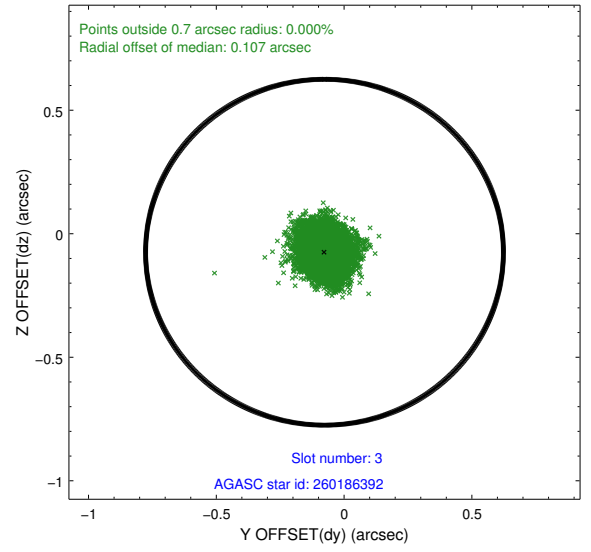
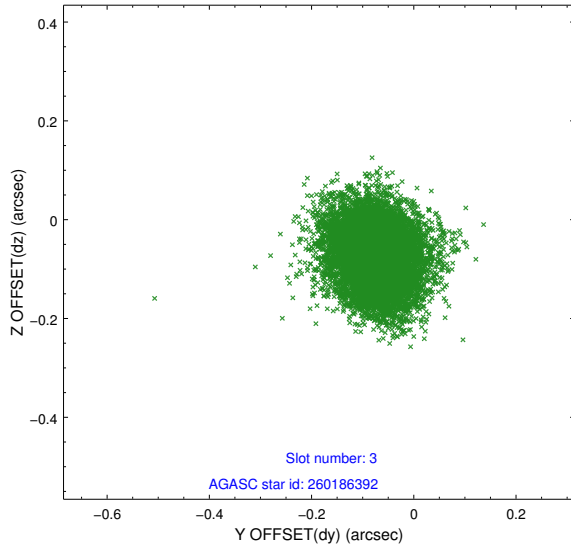


Slot Statistics

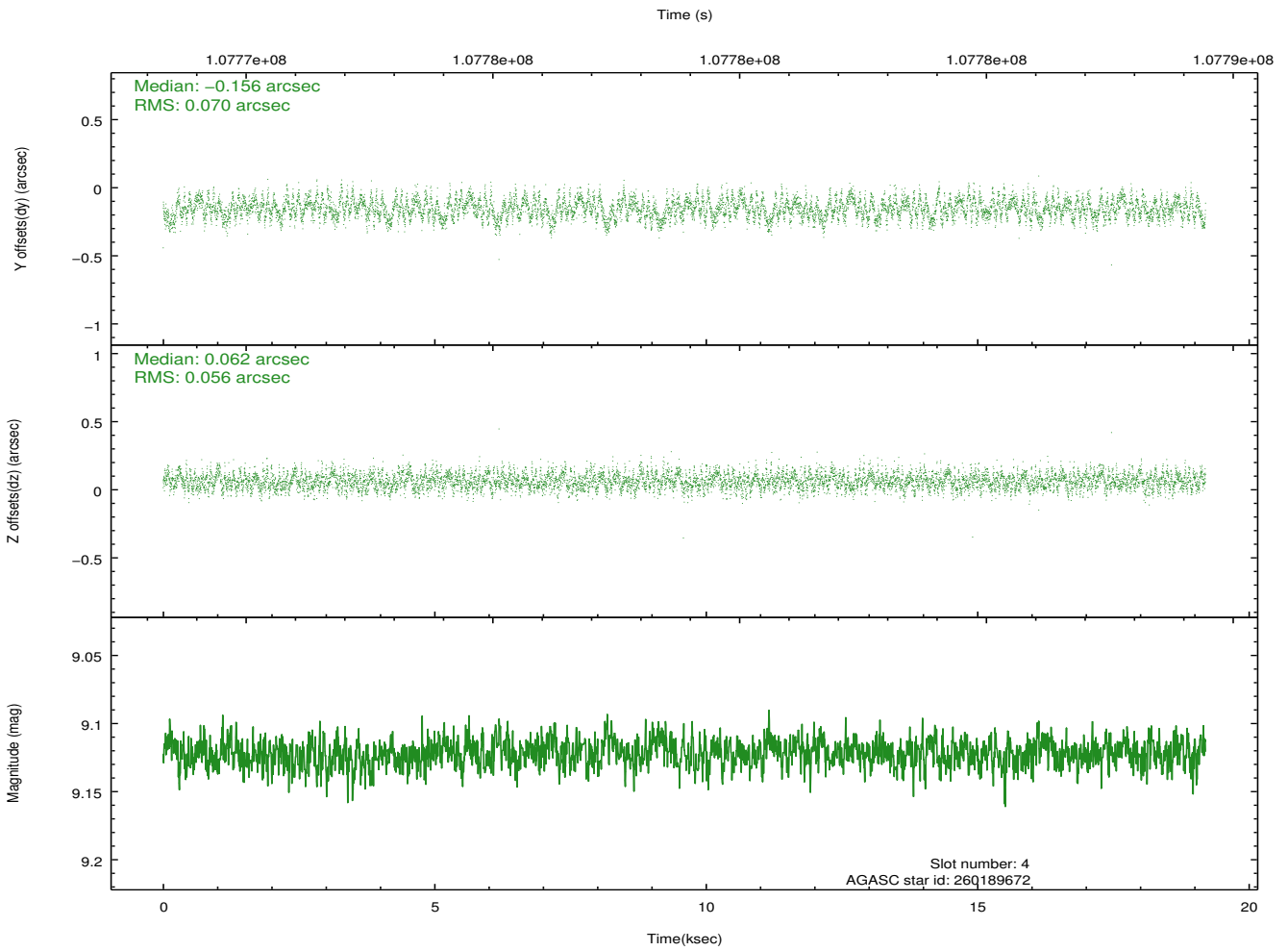
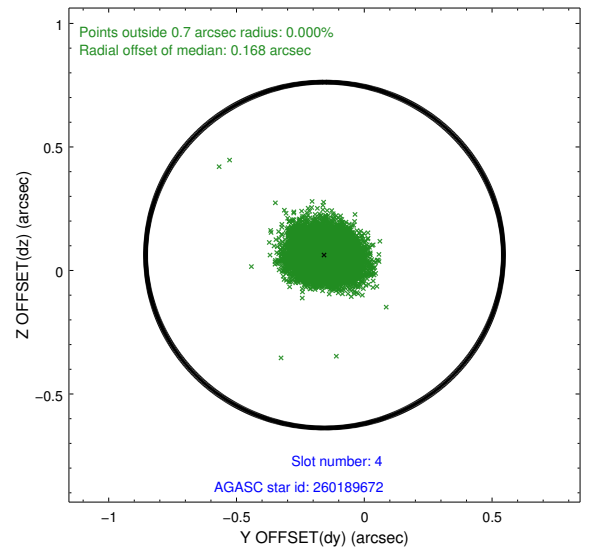
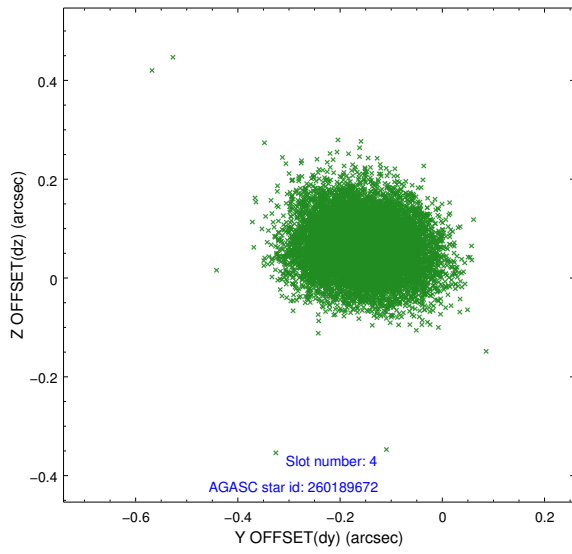
slot	status	id	mag	n_pts	med_dy	med_dz	dr1	dr2	ra	dec	mean_y	mean_z
0	FID	ACIS-I-2	7.18	4684	-0.041	-0.051	0.010	0.018	0.000000	0.000000	-756.13	-993.95
1	FID	ACIS-I-4	7.15	4684	-0.033	0.045	0.008	0.014	0.000000	0.000000	2157.79	912.16
2	FID	ACIS-I-5	7.22	4684	-0.027	0.075	0.009	0.016	0.000000	0.000000	-1809.30	909.25
3	GUIDE	260186392	8.79	9367	-0.077	-0.075	0.076	0.126	177.767471	22.743242	-1774.24	571.30
4	GUIDE	260189672	9.12	9363	-0.156	0.062	0.096	0.151	178.136603	22.711623	-2241.50	1710.55
5	GUIDE	189148592	9.36	9365	0.232	-0.108	0.090	0.148	177.434258	22.088632	828.25	674.36
6	GUIDE	189147384	9.78	9356	-0.021	0.073	0.097	0.159	177.889709	22.114499	44.59	1979.10
7	GUIDE	189143696	9.58	9361	0.018	0.048	0.112	0.172	178.041363	22.456622	-1281.01	1856.23

2.4 Star Slots

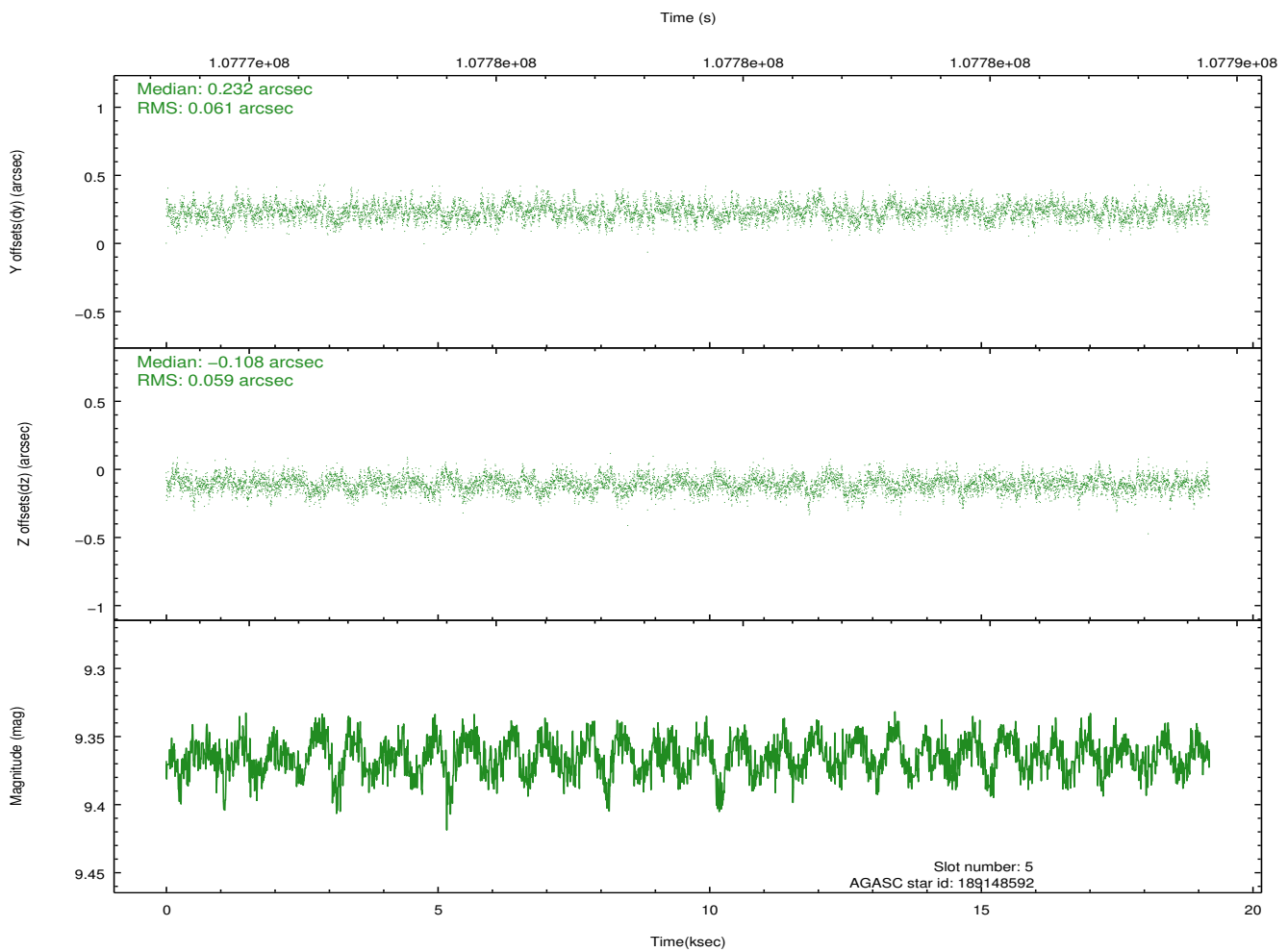
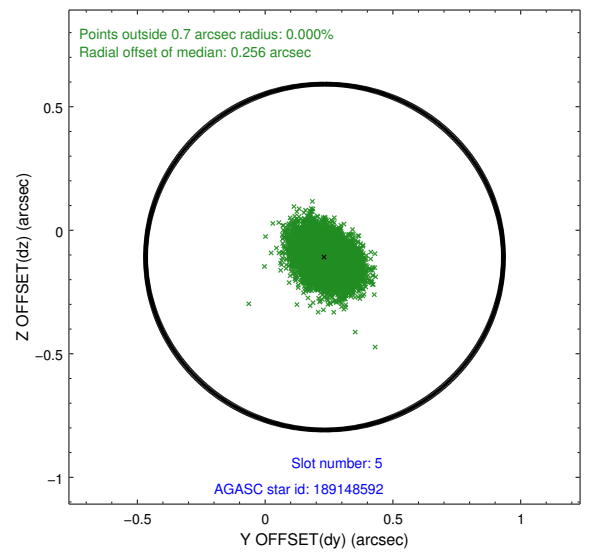
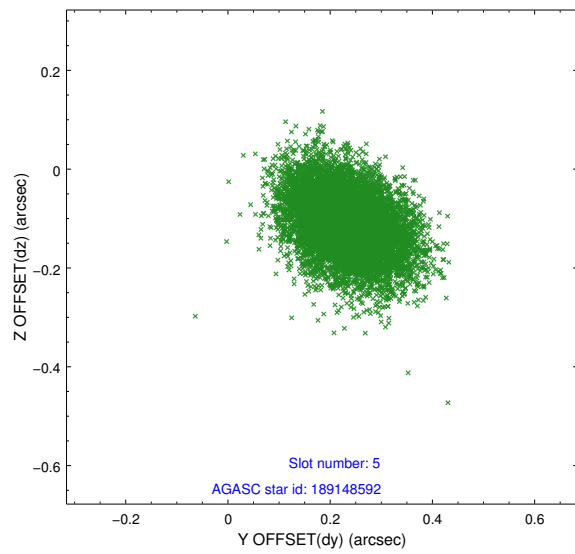
2.4.1 Slot 3



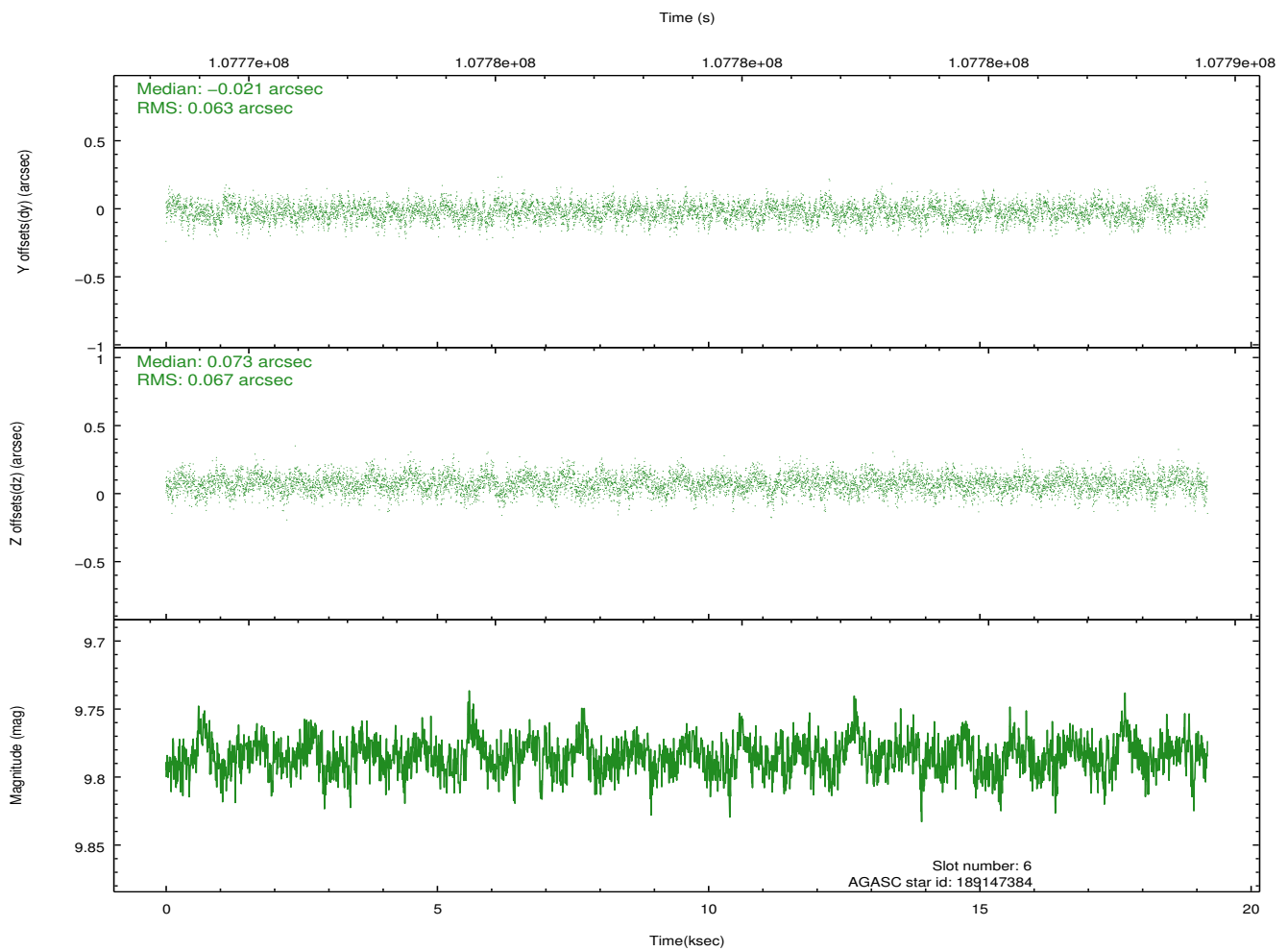
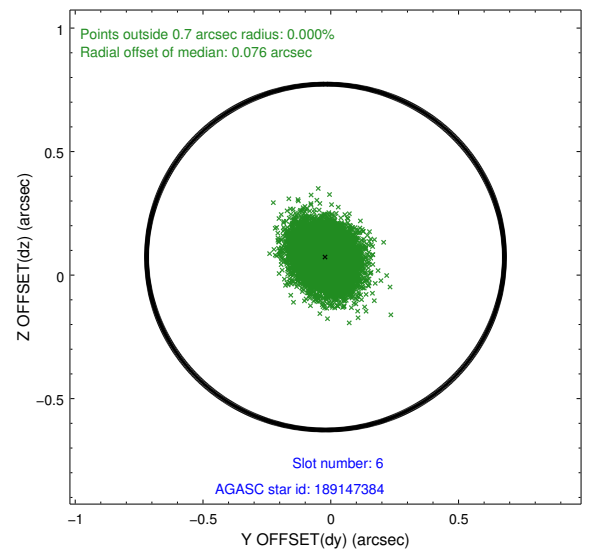
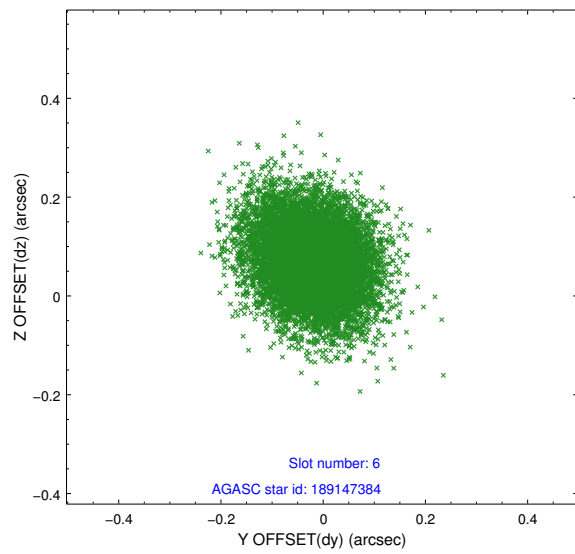
2.4.2 Slot 4



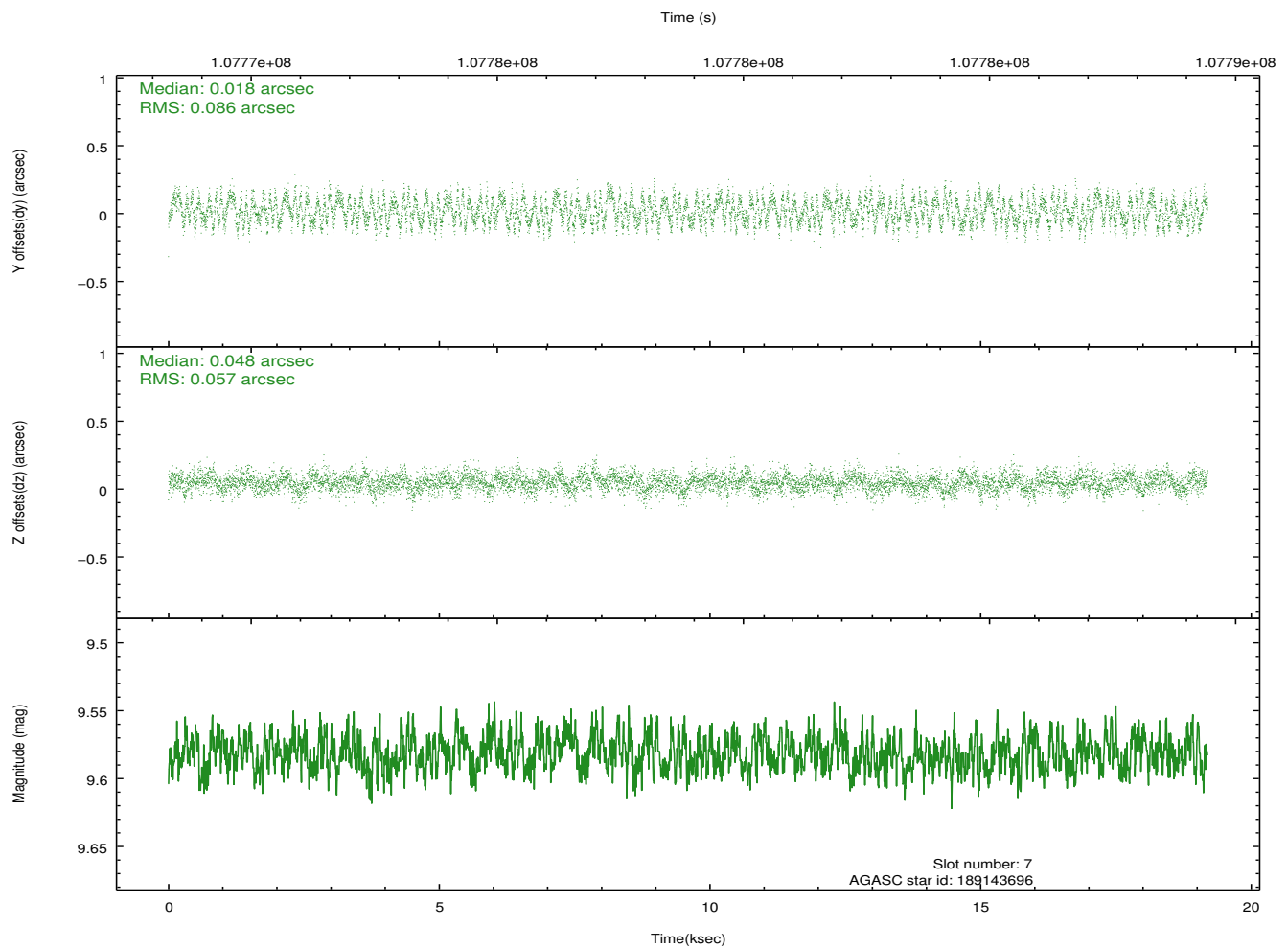
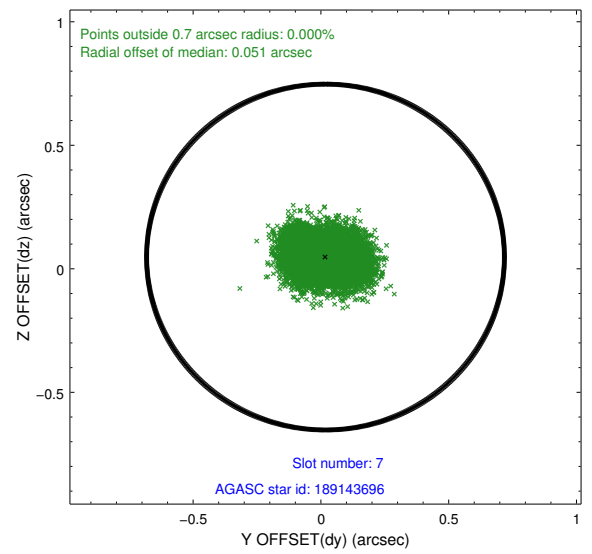
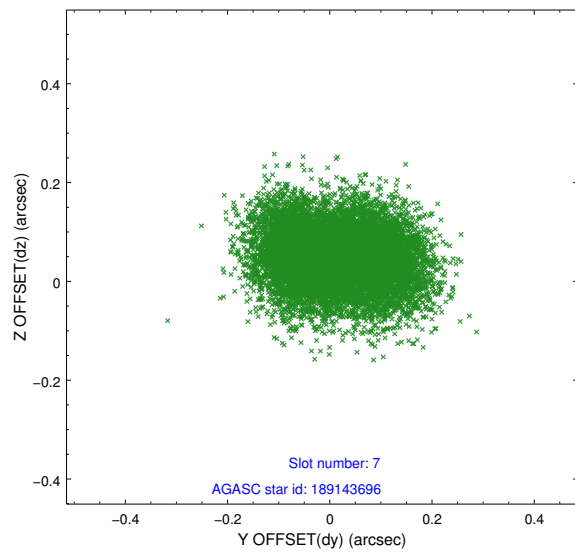
2.4.3 Slot 5



2.4.4 Slot 6

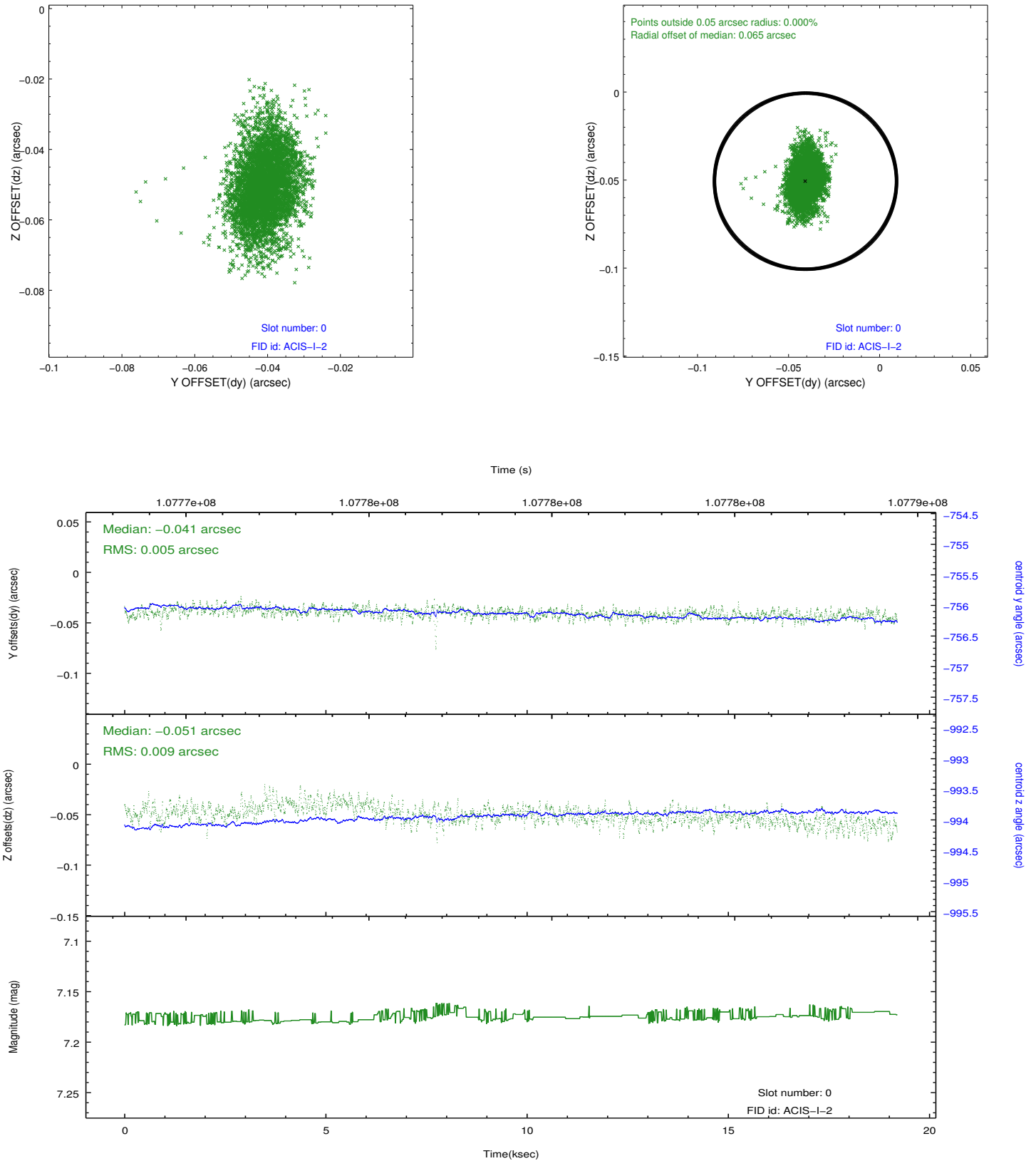


2.4.5 Slot 7

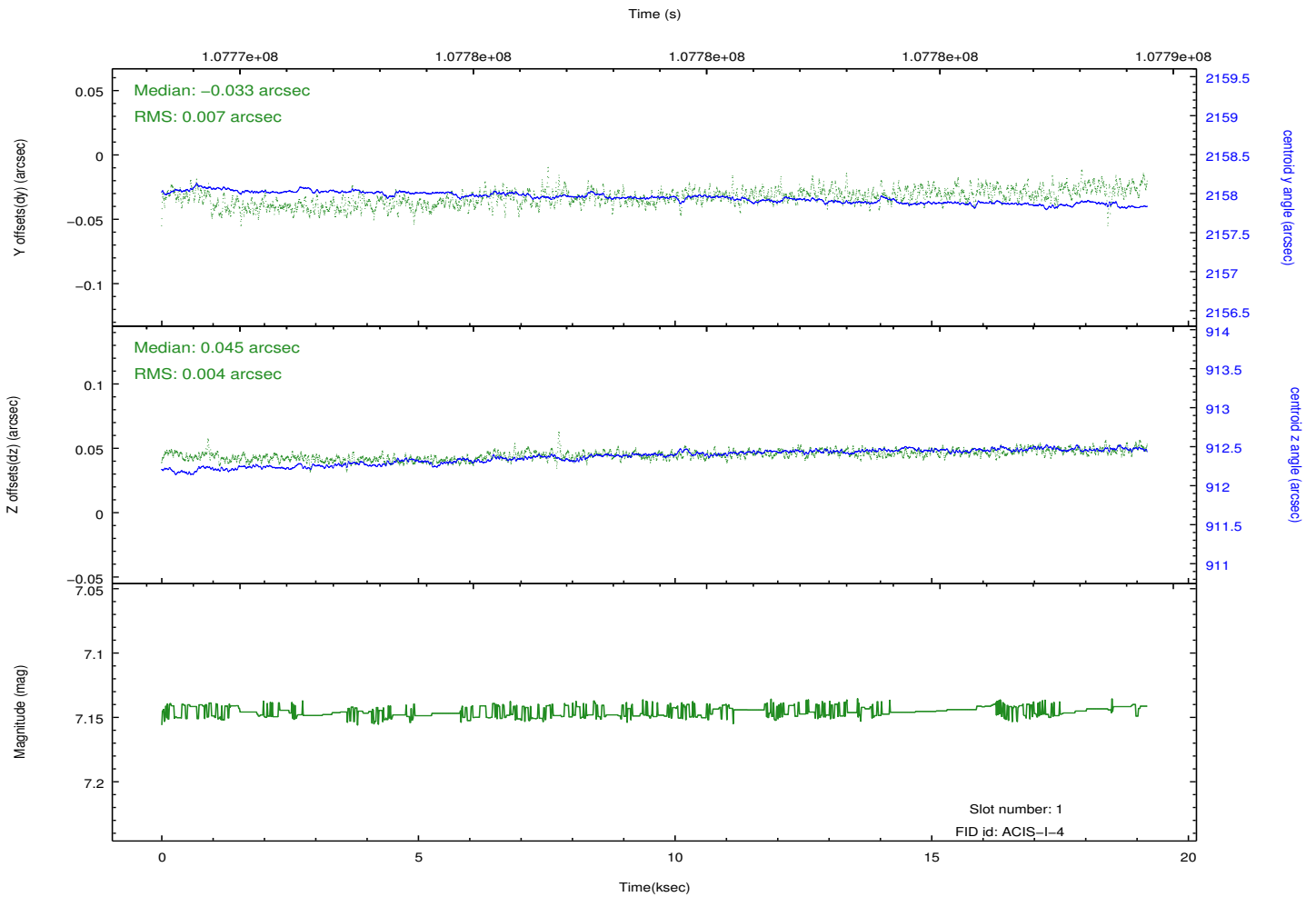
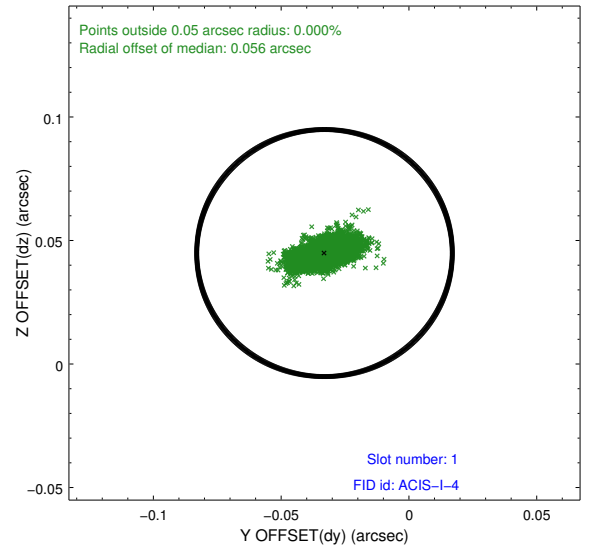
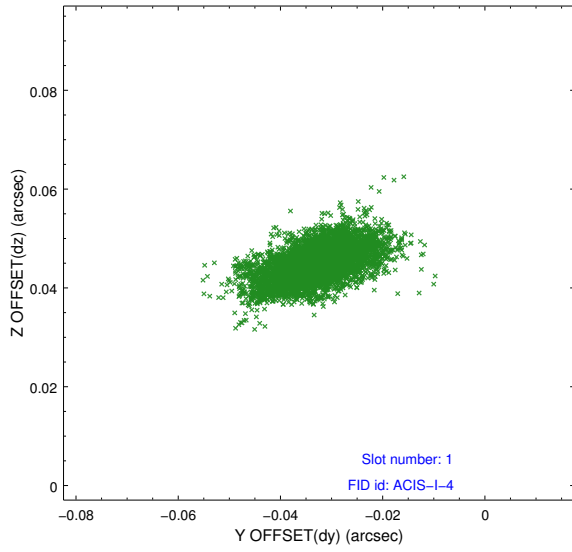


2.5 FID Slots

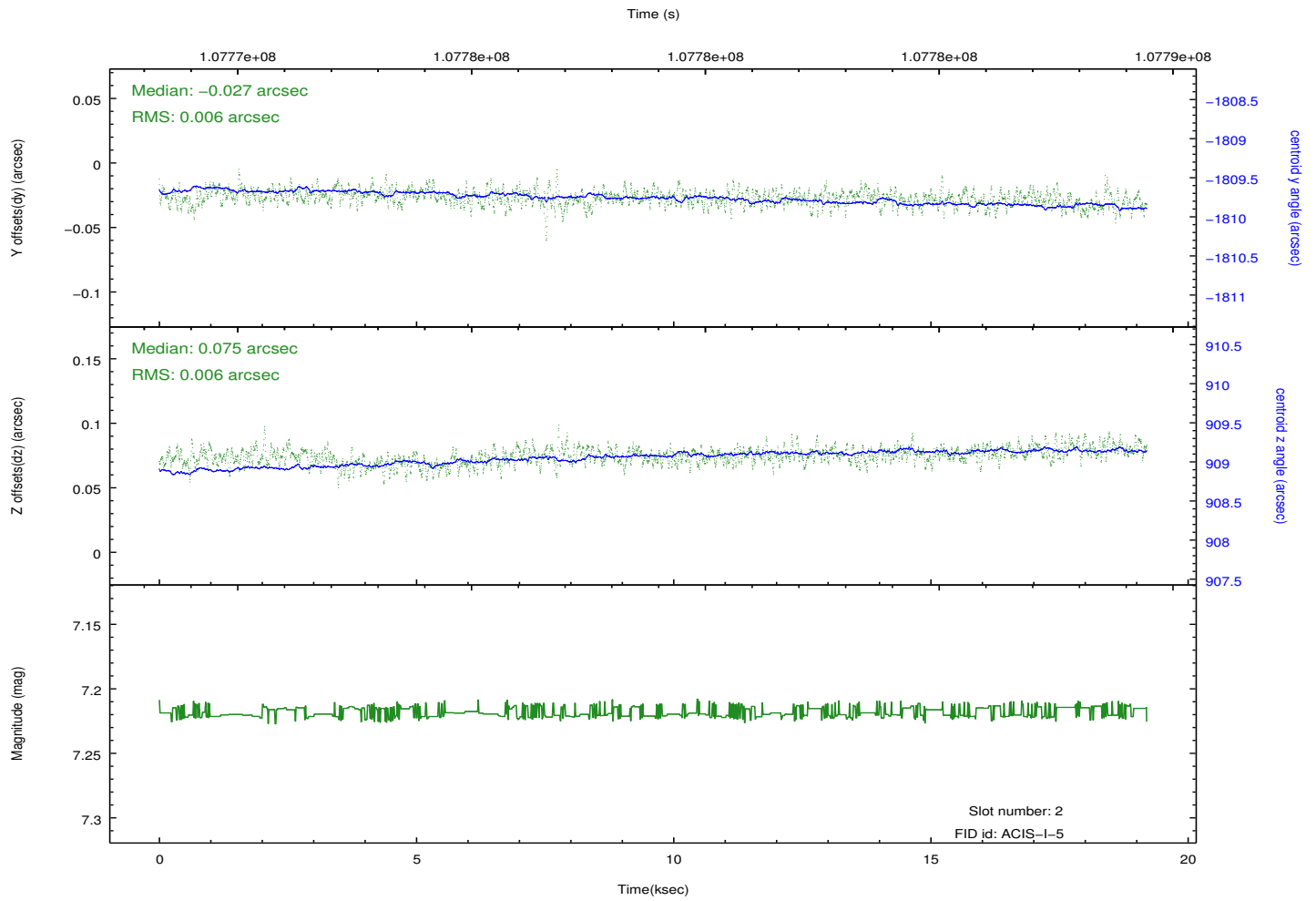
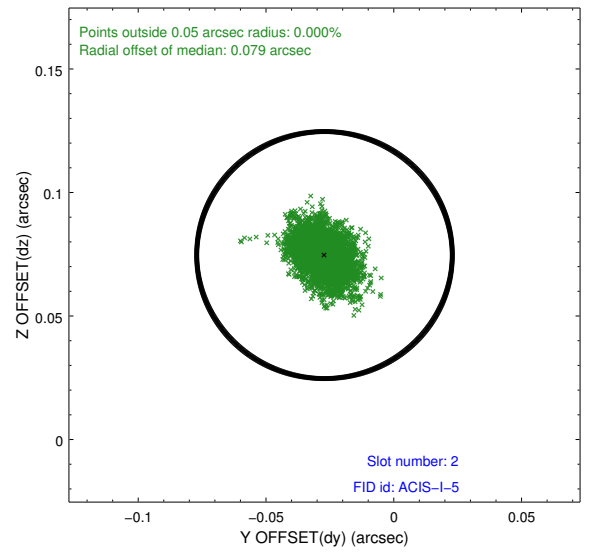
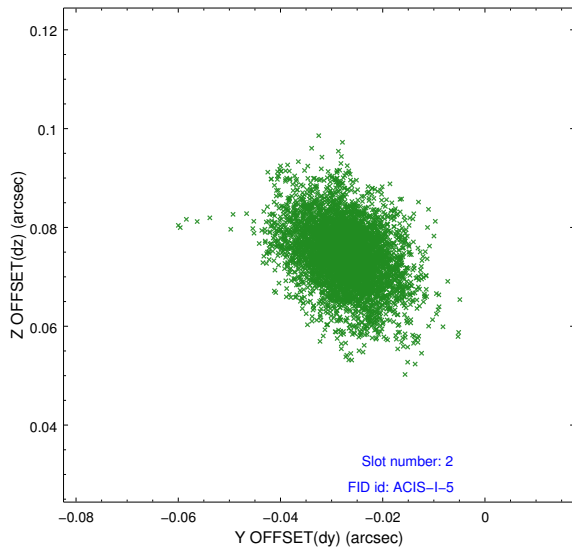
2.5.1 Slot 0



2.5.2 Slot 1



2.5.3 Slot 2



A Summary

A.1 Status

V&V Scientist	Jen Lauer
V&V Date (YYYY-MM-DD)	2012.09.25
V&V Edition	1
V&V Disposition and Status	OK
V&V Charge Time	18.764

A.2 Comments