

V&V Reference Report

L2 ASCDS Version : 10.4

Observation 17256 - L2 Version 1
Chandra X-Ray Center

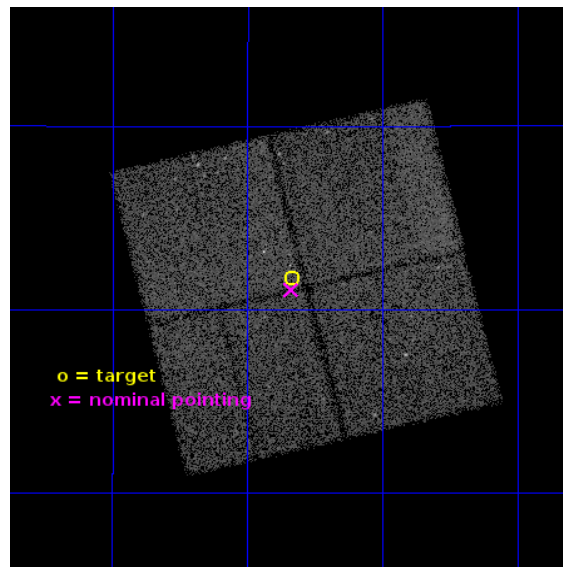
L2 Processing Date : Jun 8 2015

Contents

1	Front	2
2	OBI	3
2.1	OBI	3
2.1.1	Images	3
2.1.2	Bias	3
2.1.3	Parameters	4
2.1.4	Events	4
2.2	Compared Parameters	5
2.3	Aspect	6
2.4	Star Slots	9
2.4.1	Slot 3	9
2.4.2	Slot 4	10
2.4.3	Slot 5	11
2.4.4	Slot 6	12
2.4.5	Slot 7	13
2.5	FID Slots	14
2.5.1	Slot 0	14
2.5.2	Slot 1	15
2.5.3	Slot 2	16
A	Summary	17
A.1	Status	17
A.2	Comments	17

1 Front

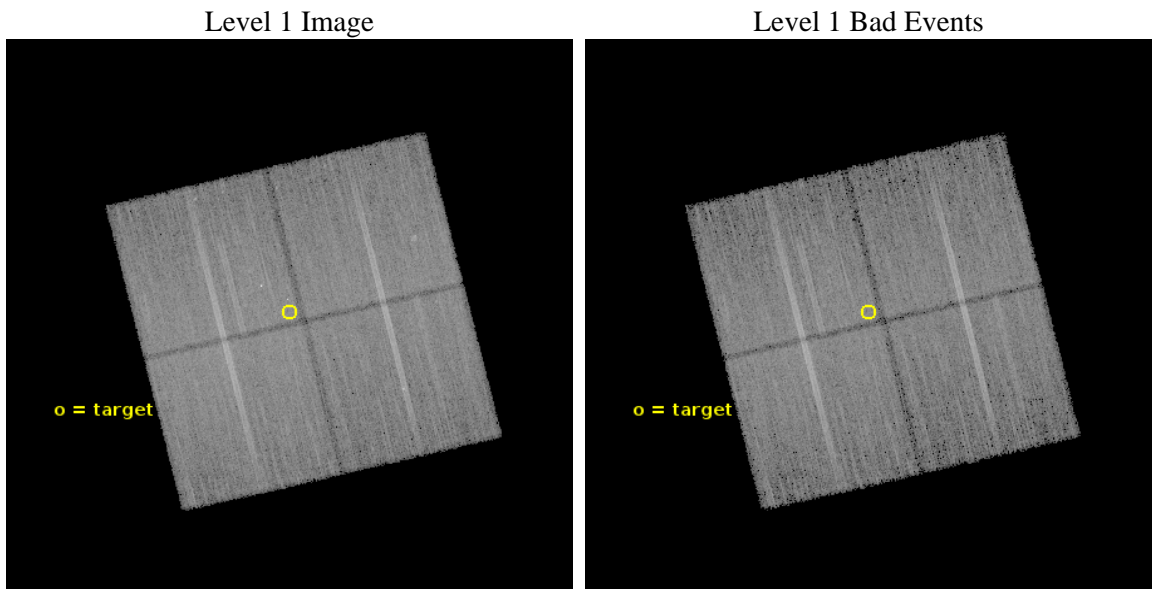
seq_num	201013	Sequence number
obs_id	17256	Observation id
title	The Chandra-Kepler Flare Survey	Proposal title
observer	Jeremy Drake	Principal investigator
object	Praesepe	Source name
dtcycle	0	
cycle	P	events from which exps? Prim/Second/Both
ra_targ	129.958333	Observer's specified target RA [deg]
dec_targ	19.528056	Observer's specified target Dec [deg]
ra_nom	129.959334485	Nominal RA [deg]
dec_nom	19.518072602749	Nominal Dec [deg]
roll_nom	256.37253233869	Nominal Roll [deg]
revision	1	Processing version of data
ontime	48083.291967273	Sum of GTIs [s]
livetime	47455.048359316	Livetime [s]
ontime0	48083.168837428	Sum of GTIs [s]
ontime1	48083.20989728	Sum of GTIs [s]
ontime2	48086.391907573	Sum of GTIs [s]
ontime3	48083.291967273	Sum of GTIs [s]
l2events	96592	Number of level 2 events



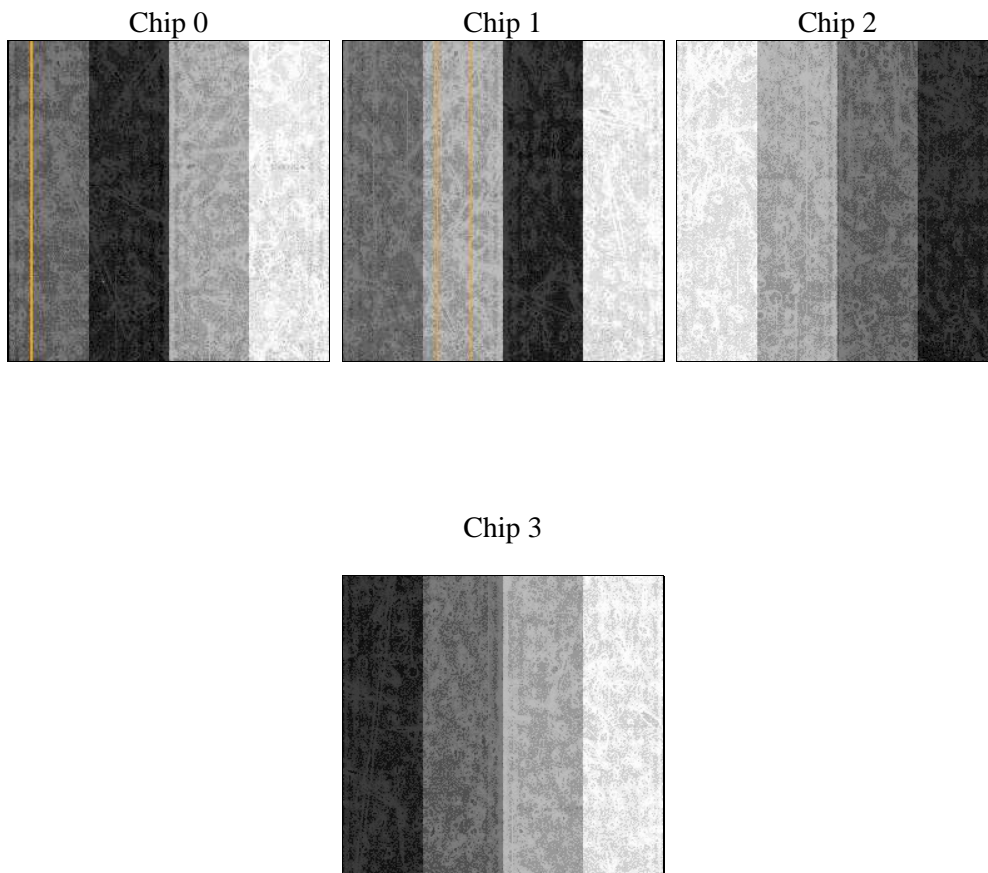
2 OBI

2.1 OBI

2.1.1 Images



2.1.2 Bias



2.1.3 Parameters

obi_num	0	Obi number	sched_exp_time	48000.000000	[s] Scheduled observation exposure time
ascdsver	10.4	Processing system revision	ontime	48083.291967273	Sum of GTIs [s]
caldbver	4.6.7	 	ontime0	48083.168837428	Sum of GTIs [s]
date	2015-06-08T14:25:01	Date and time of file creation	ontime1	48083.20989728	Sum of GTIs [s]
revision	1	Processing version of data	ontime2	48086.391907573	Sum of GTIs [s]
			ontime3	48083.291967273	Sum of GTIs [s]
			l1events	936240	Number of level 1 events

2.1.4 Events

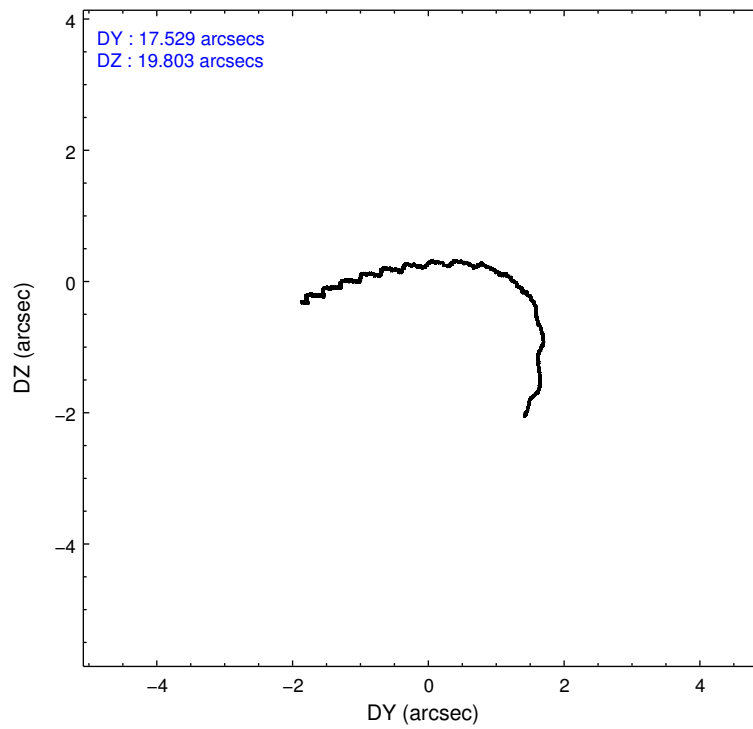
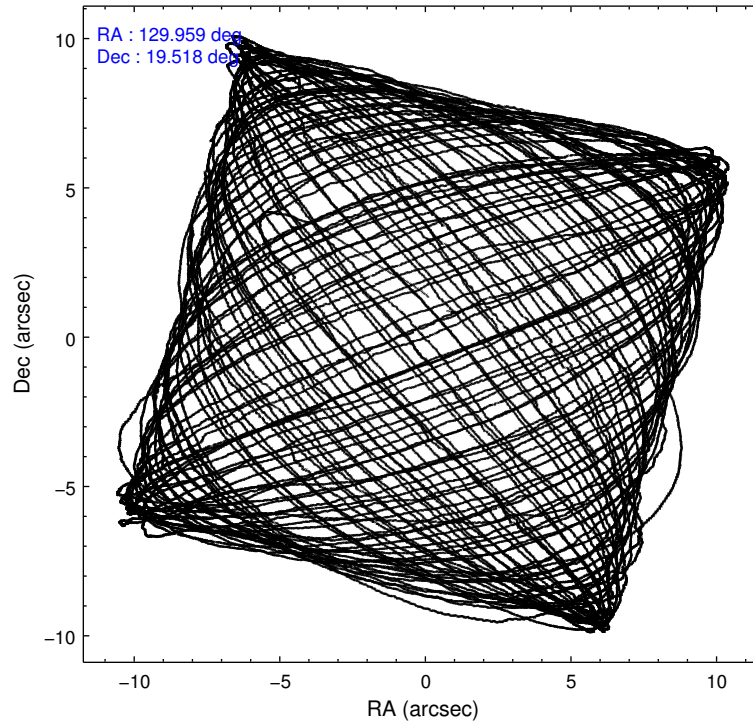
	ccd 0	ccd 1	ccd 2	ccd 3
level 1 events	220271	229182	244507	242280
rejected events	192298	197158	217545	213421
rejected %	87%	86%	88%	88%

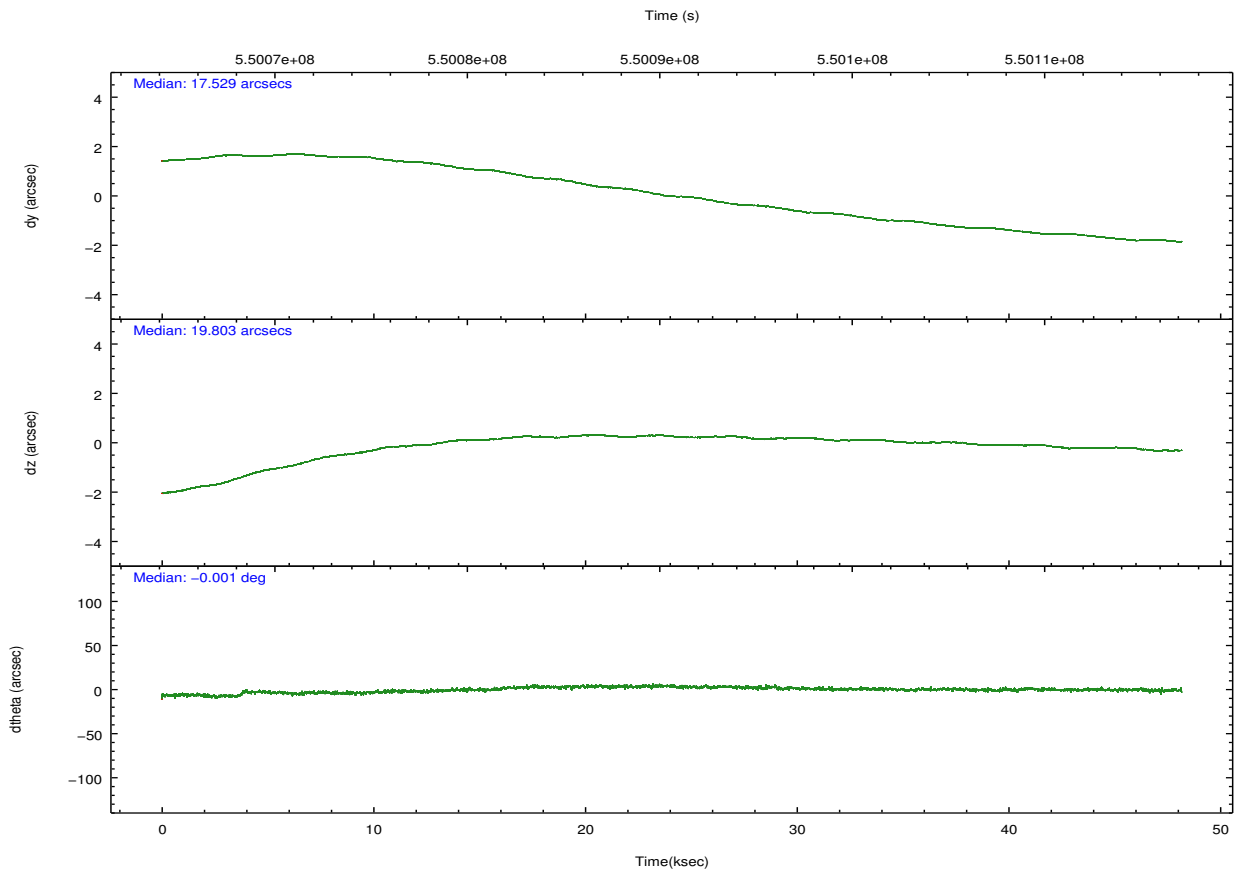
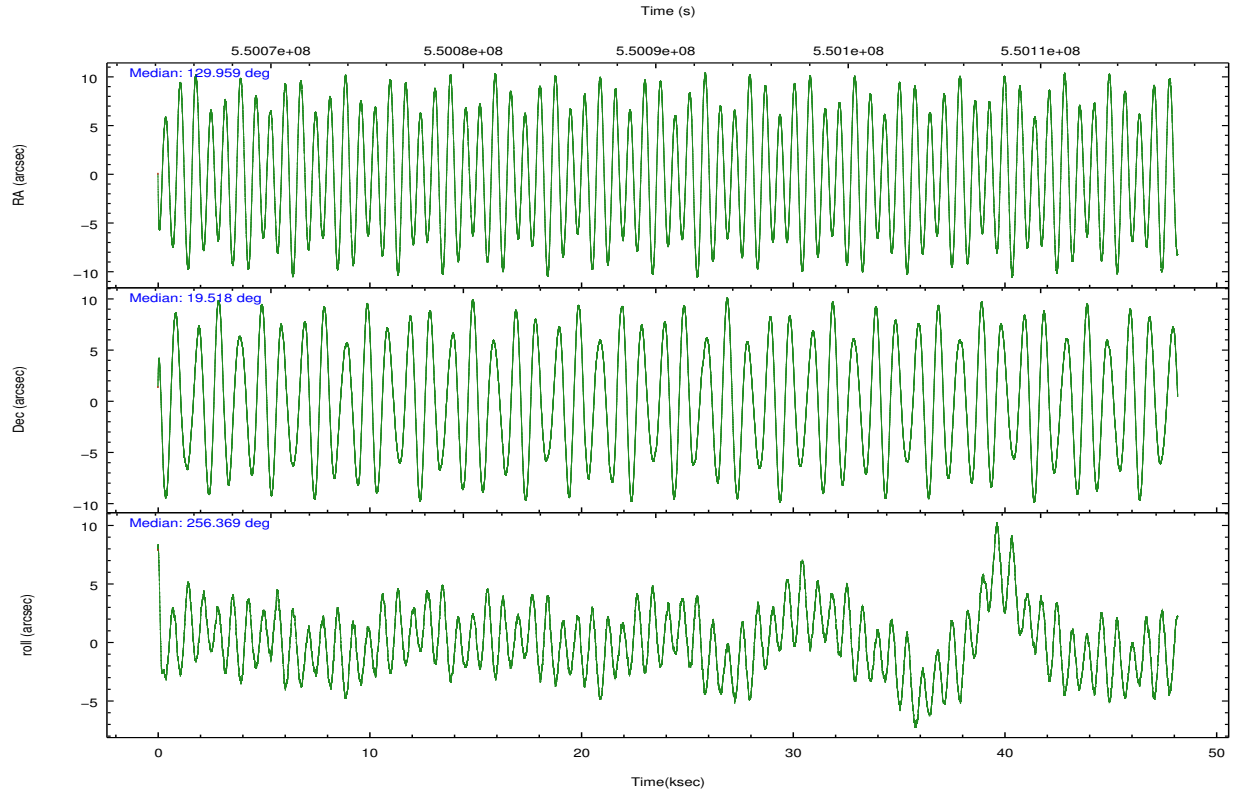
	ccd 0	ccd 1	ccd 2	ccd 3
grade 0 events	9461	10966	9271	11133
	4%	4%	3%	4%
grade 1 events	113	142	135	148
	0%	0%	0%	0%
grade 2 events	7132	7832	6917	6192
	3%	3%	2%	2%
grade 3 events	2952	3031	2604	2892
	1%	1%	1%	1%
grade 4 events	2727	3202	2687	2849
	1%	1%	1%	1%
grade 5 events	11034	11812	10184	12724
	5%	5%	4%	5%
grade 6 events	5703	6999	5486	5796
	2%	3%	2%	2%
grade 7 events	181149	185198	207223	200546
	82%	80%	84%	82%

2.2 Compared Parameters

Parameter	Planned	Actual	Parameter	Planned	Actual
Instrument	ACIS	ACIS	Obspar format version number	7	7
Detector	ACIS-0123	ACIS-0123	Obspar file type	PREDICTED	ACTUAL
Grating	NONE	NONE	Obspar update status	NONE	UPDATED
Data mode	VFAINT	VFAINT	Number of optional ACIS chips dropped	0	0
Observation mode	POINTING	POINTING	On-chip summing requested	N	N
[deg] Pointing RA	129.950987	129.9593344849974	Subarray requested	NONE	NONE
[deg] Pointing Dec	19.544522	19.51807260274927	Alternating exposures requested	N	N
[deg] Pointing Roll	256.166636	256.3725323386925	[s] Primary exposure time	0.000000	3.1
[s] Window start time (MET)	546566467.184000	546566467.184000			
[s] Window stop time (MET)	550195267.184000	550195267.184000			
[mm] SIM focus pos	-0.782348	-0.7809083437167272			
[mm] SIM defocus	0	0.001439871863259334			
[mm] SIM translation stage pos	-233.592463	-233.5899487761303			
[mm] SIM translation stage offset	0	-0.002504226799430853			
[s] Observation start time (MET)	550066718.184000	550065618.45102			
Observation start date	2015-06-07T12:17:31	2015-06-07T12:00:18			
[s] Observation end time (MET)	550114718.184000	550115151.0663			
Observation end date	2015-06-08T01:37:31	2015-06-08T01:45:51			
Read mode	TIMED	TIMED			

2.3 Aspect





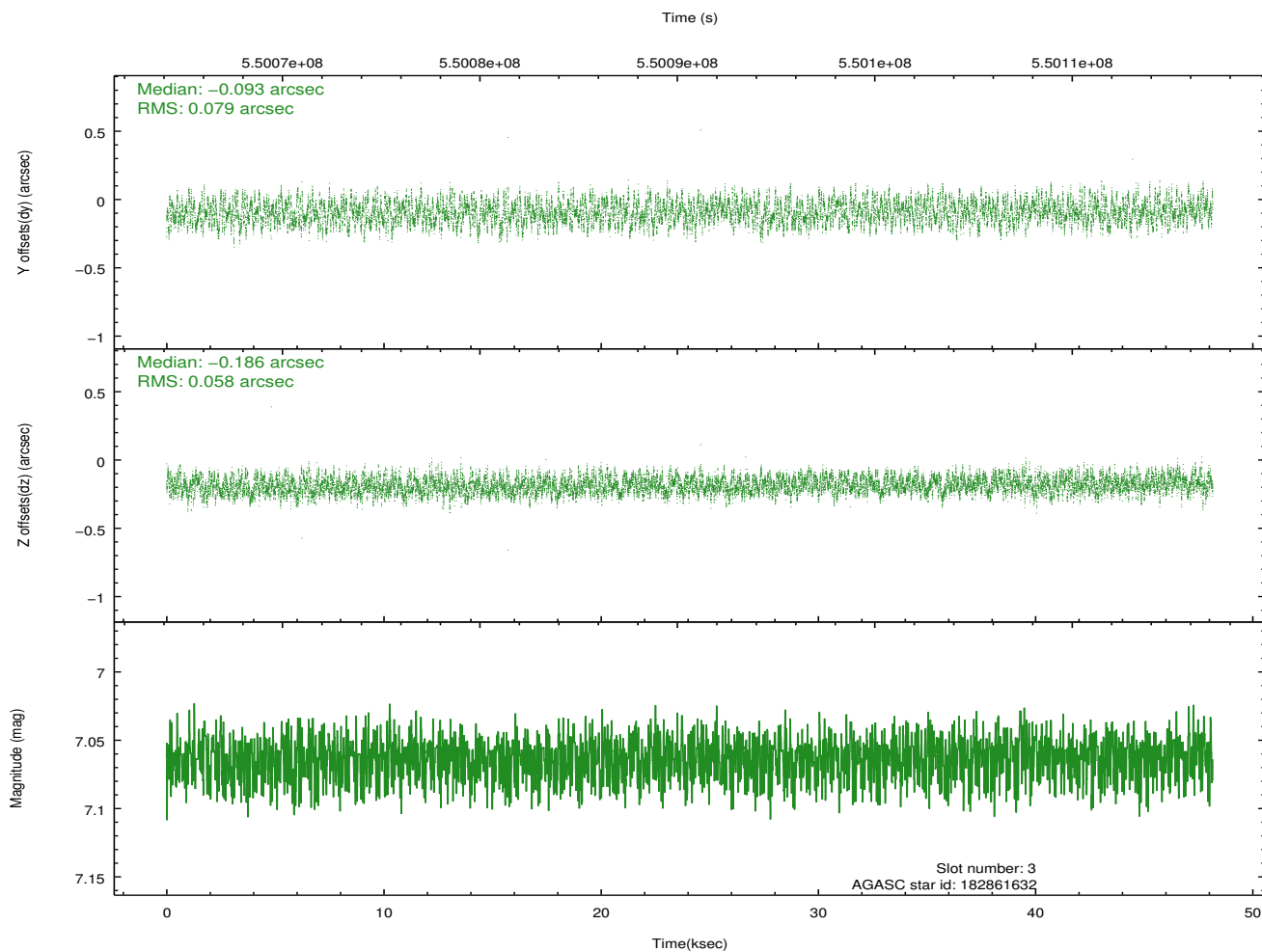
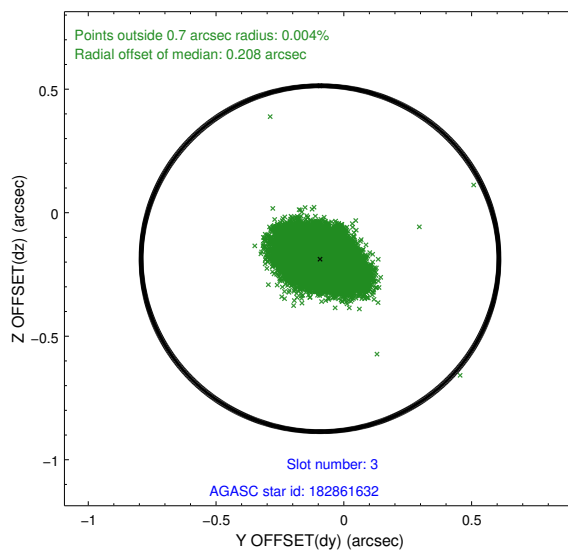
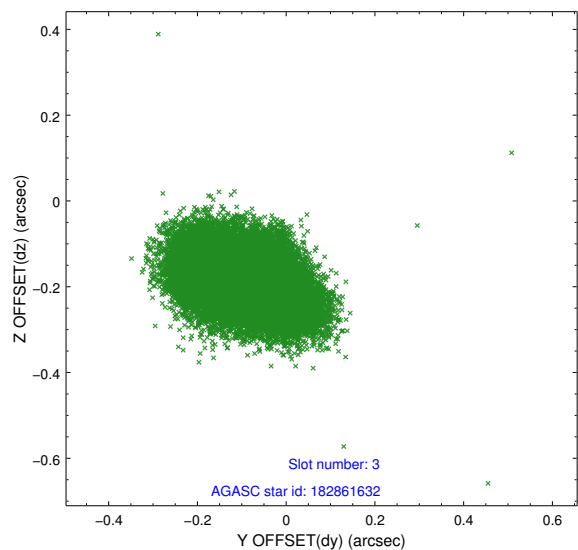
Slot Statistics

slot	status	used	id	mag	n_pts	med_dy	med_dz	dr1	dr2	ra	dec	mean_y	mean_z
0	FID		ACIS-I-1	7.11	11749	-0.049	0.022	0.016	0.028	0.000000	0.000000	921.76	-843.26
1	FID		ACIS-I-2	7.02	11747	-0.205	-0.104	0.023	0.049	0.000000	0.000000	-772.50	-849.80
2	FID		ACIS-I-4	7.04	11749	0.158	0.151	0.033	0.062	0.000000	0.000000	2141.88	1056.67
3	GUIDE	used	182861632	7.06	23497	-0.093	-0.186	0.106	0.166	130.083935	19.348995	575.83	606.48
4	GUIDE	used	182866280	7.19	23498	-0.076	-0.048	0.104	0.164	130.180029	19.719315	-796.58	602.90
5	GUIDE	used	182863216	7.10	23499	0.157	0.084	0.095	0.159	129.444846	19.267218	1379.05	-1432.01
6	GUIDE	used	182864008	8.12	23494	-0.038	-0.062	0.086	0.136	130.163501	19.228293	932.85	973.32
7	GUIDE	used	183240984	7.96	23497	0.051	0.216	0.081	0.129	129.596337	20.207321	-2031.08	-1733.58

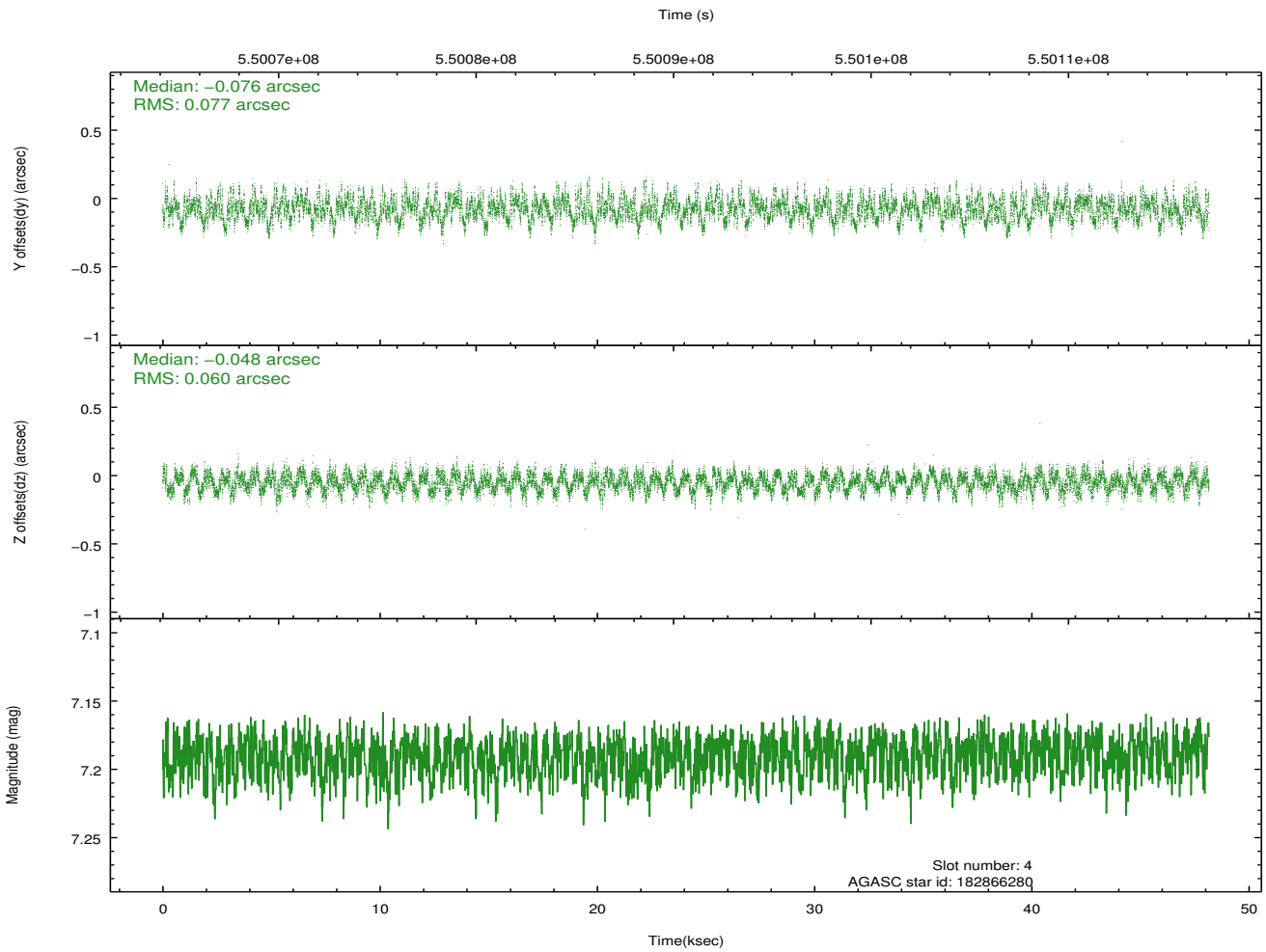
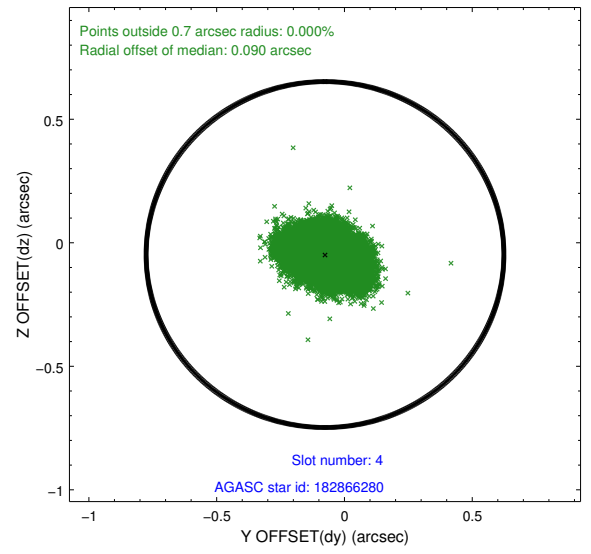
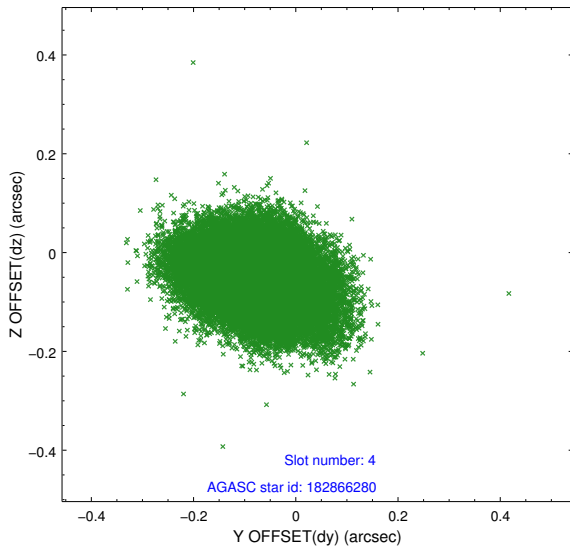
∞

2.4 Star Slots

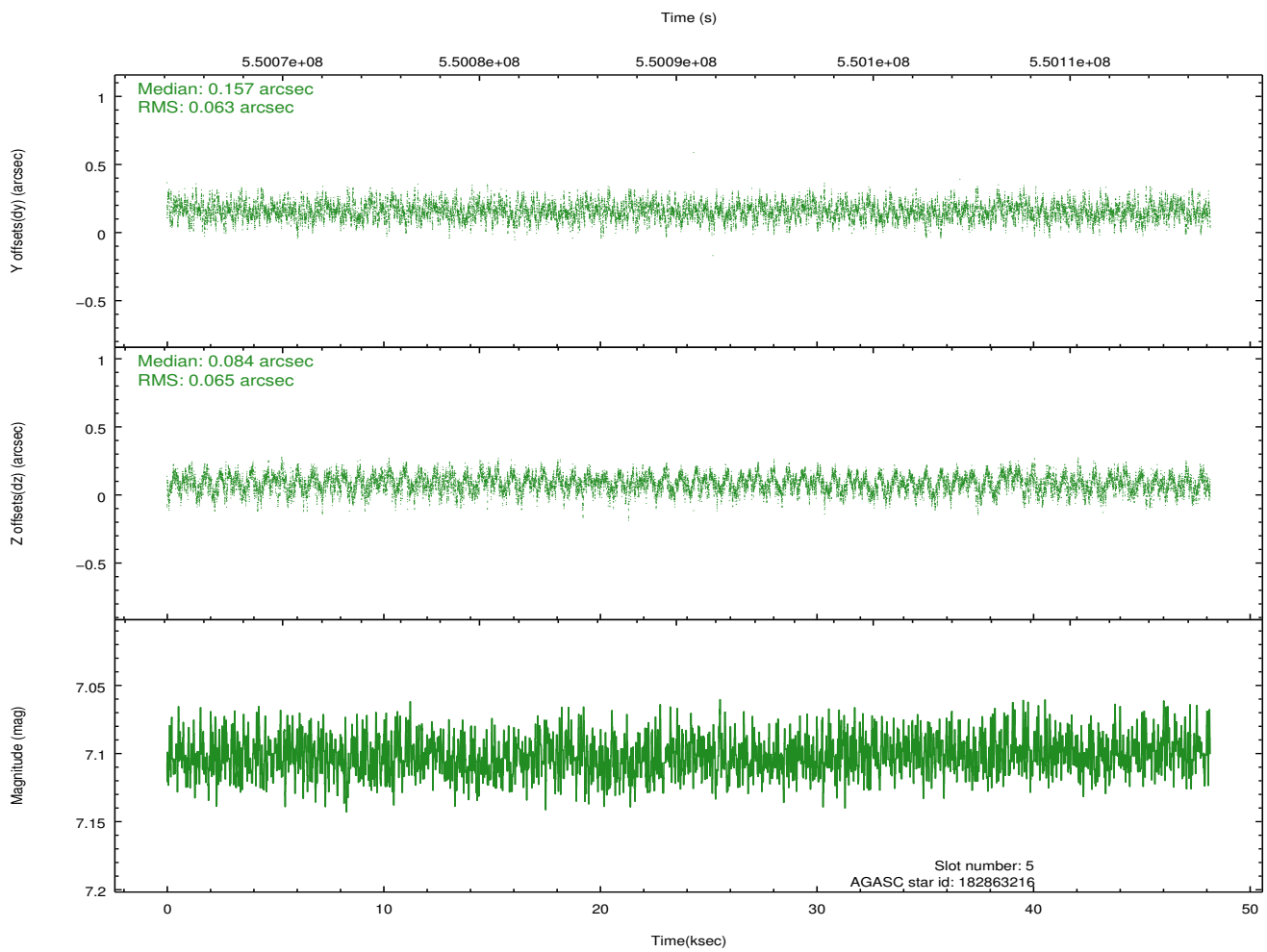
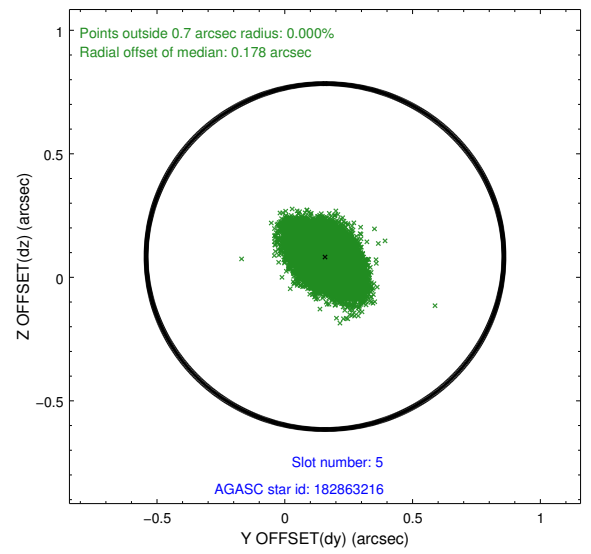
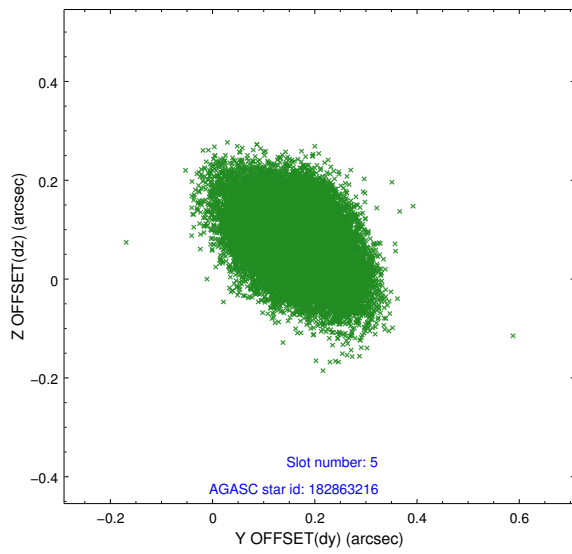
2.4.1 Slot 3



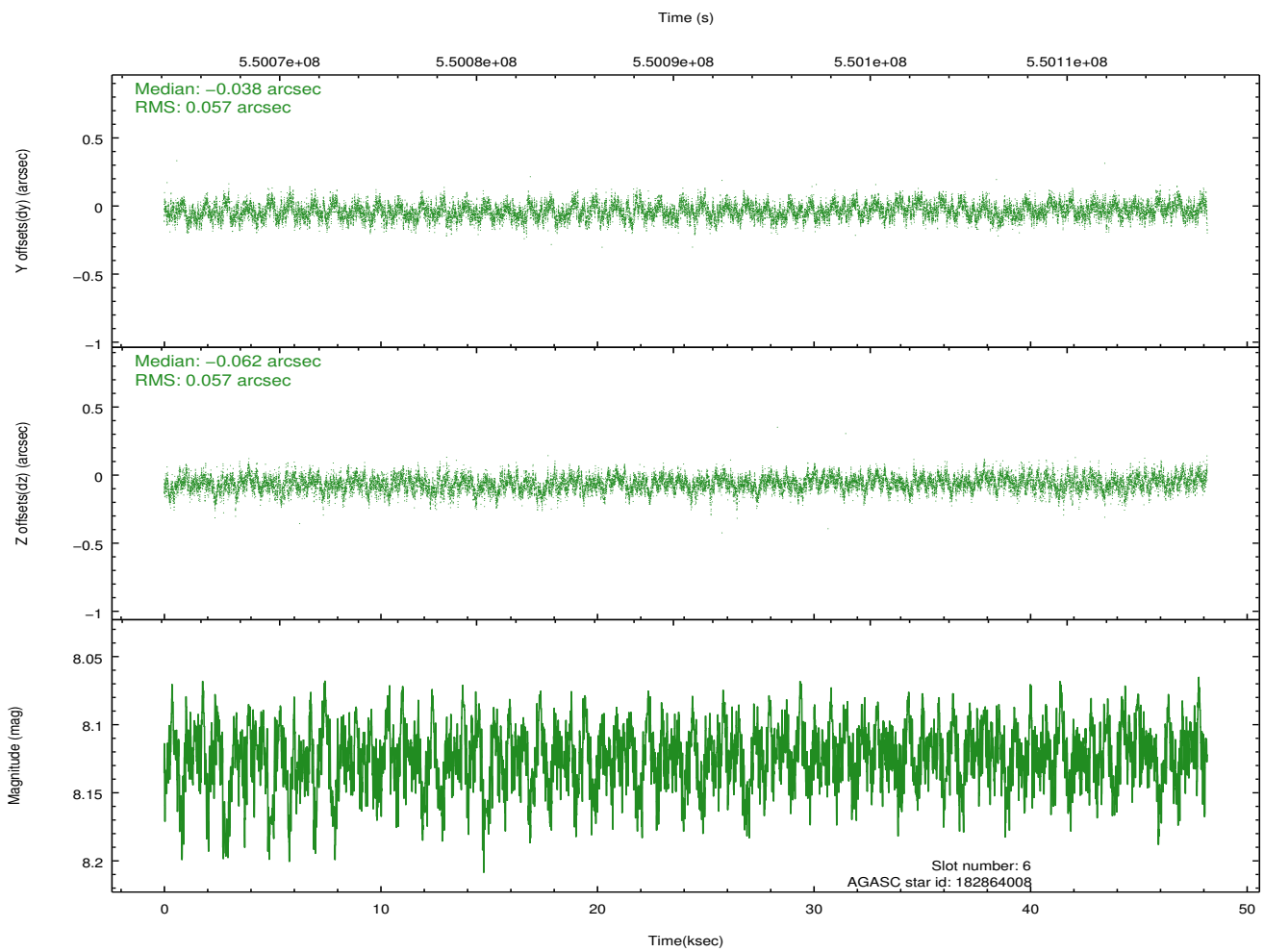
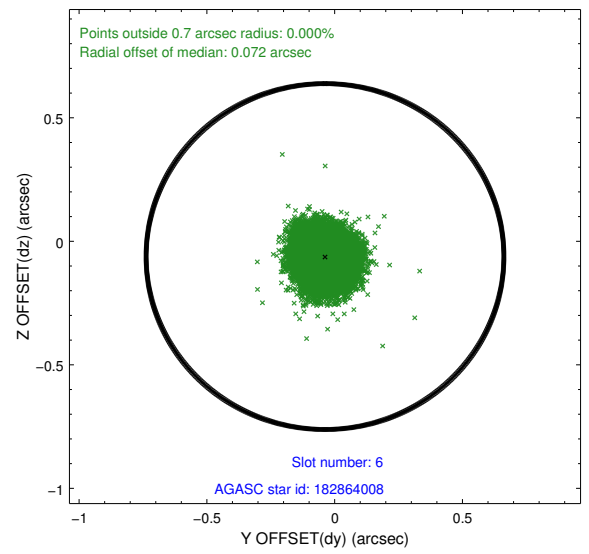
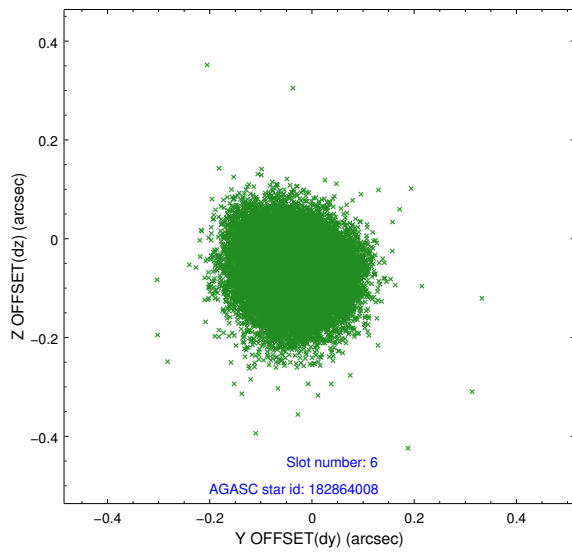
2.4.2 Slot 4



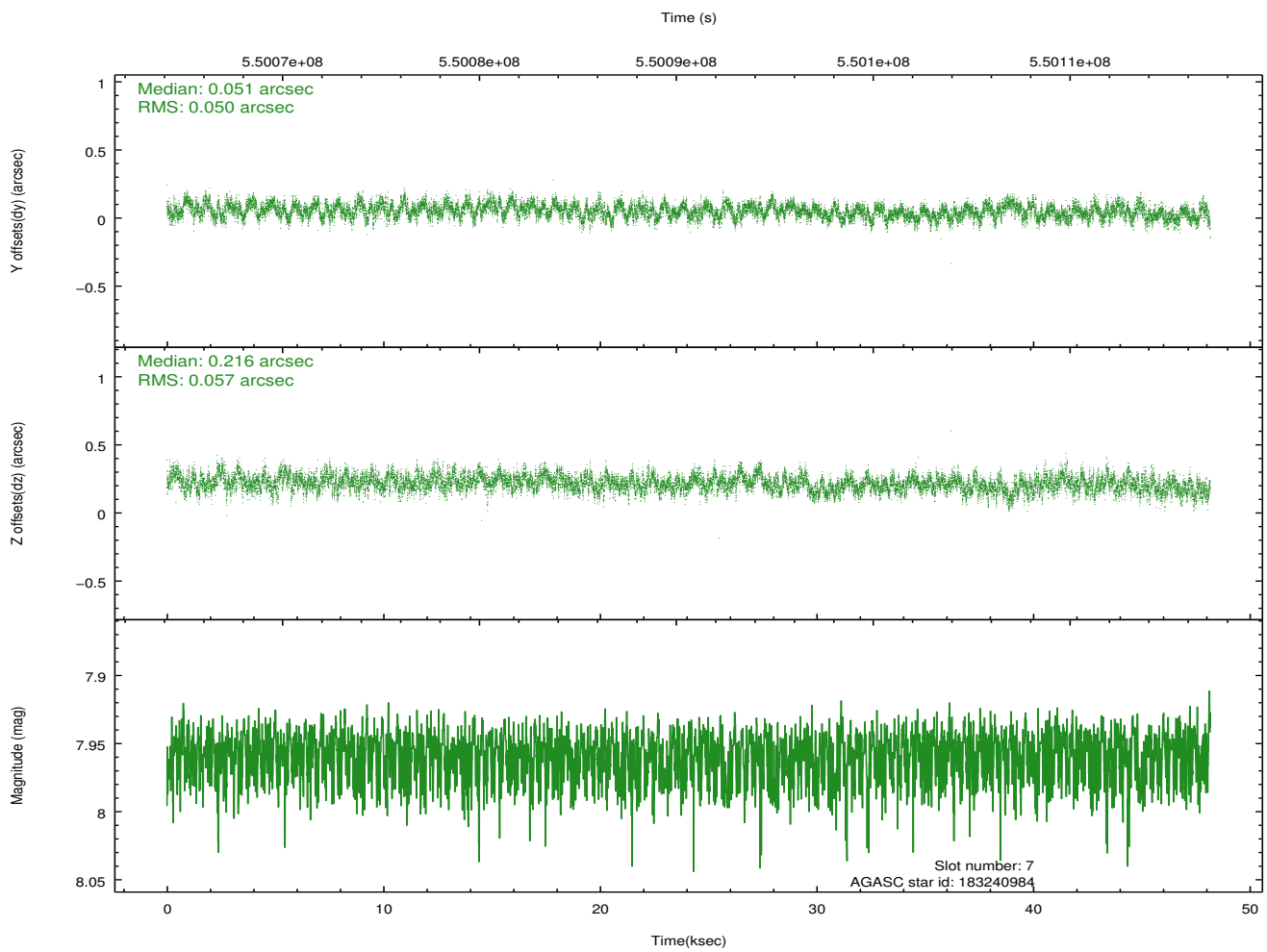
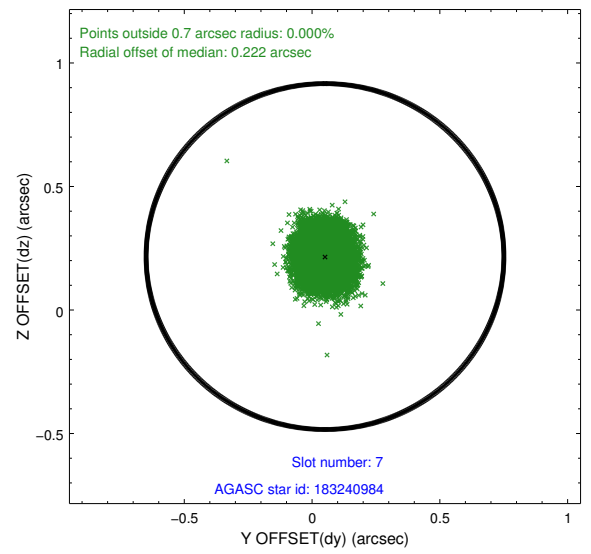
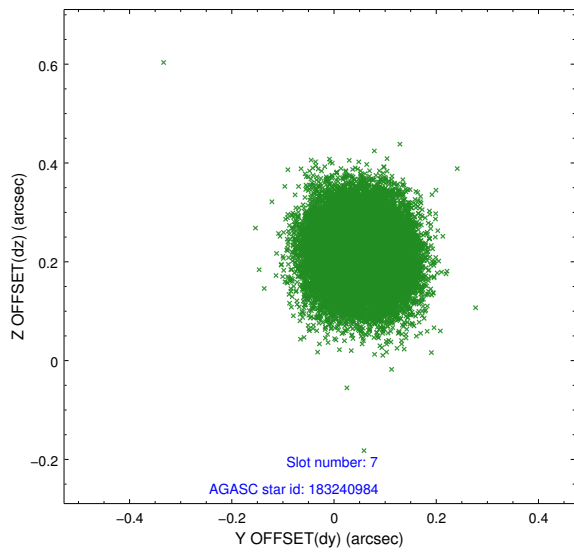
2.4.3 Slot 5



2.4.4 Slot 6

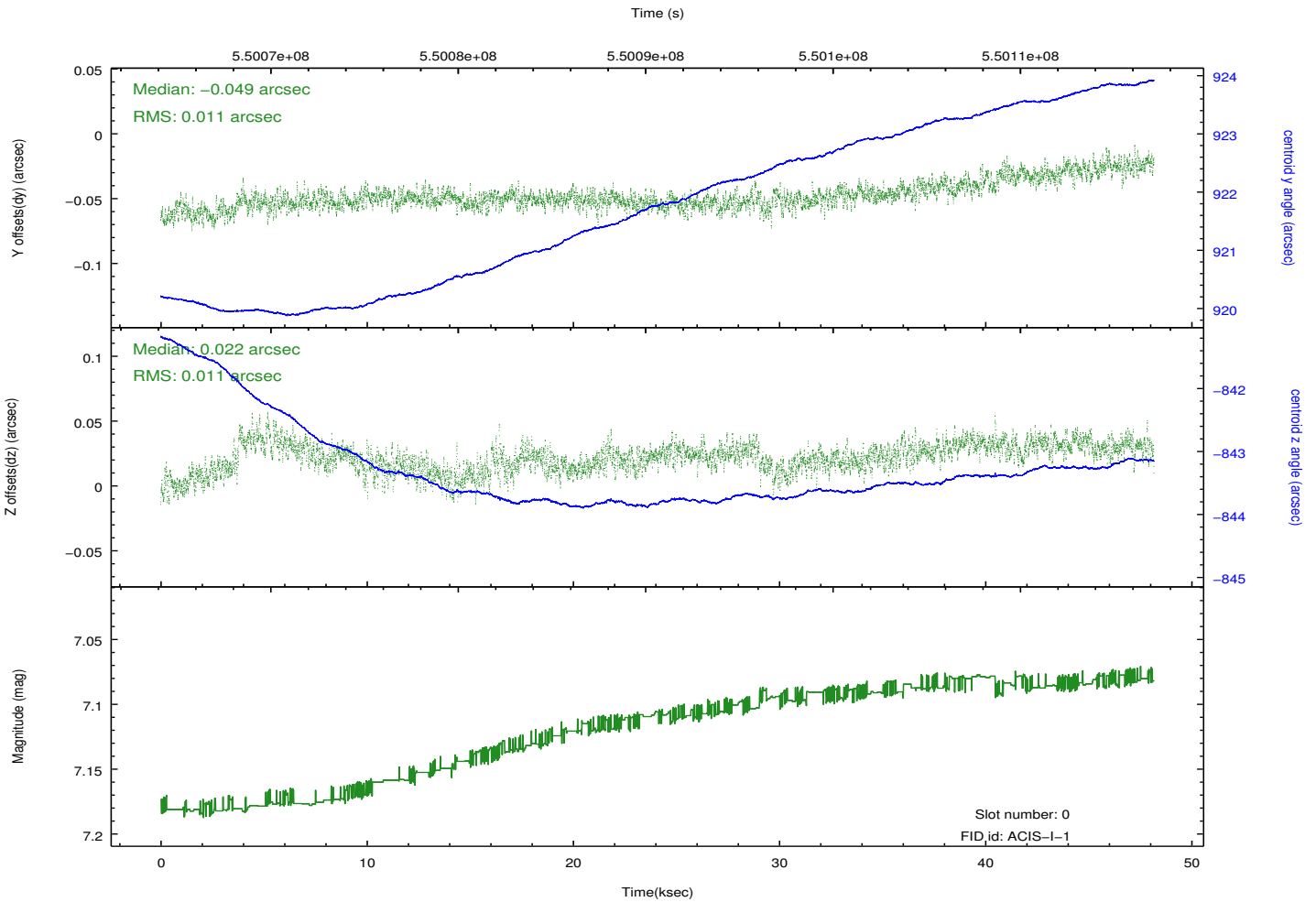
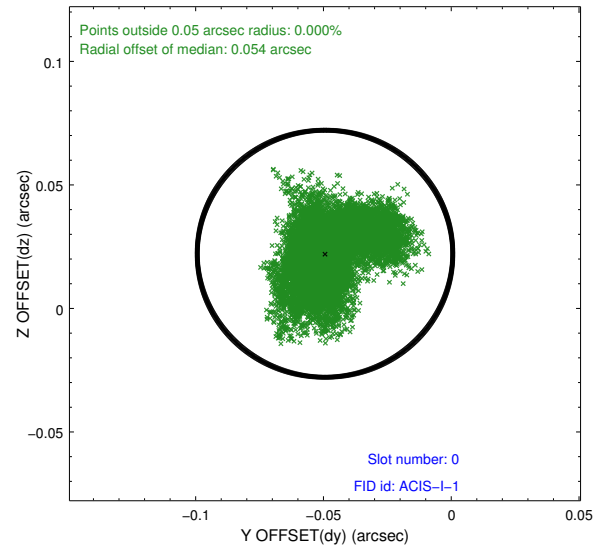
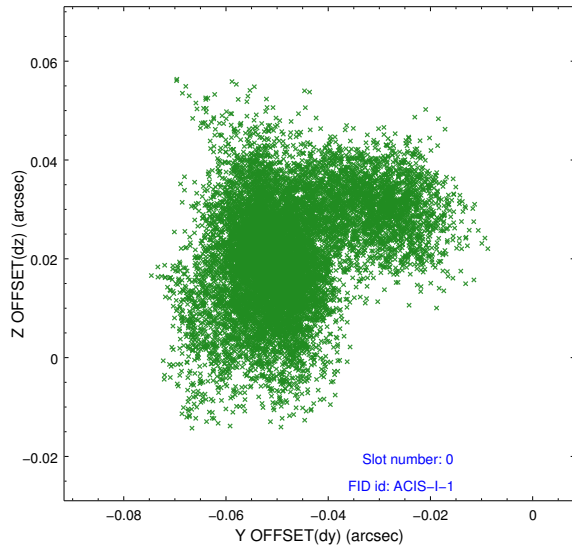


2.4.5 Slot 7

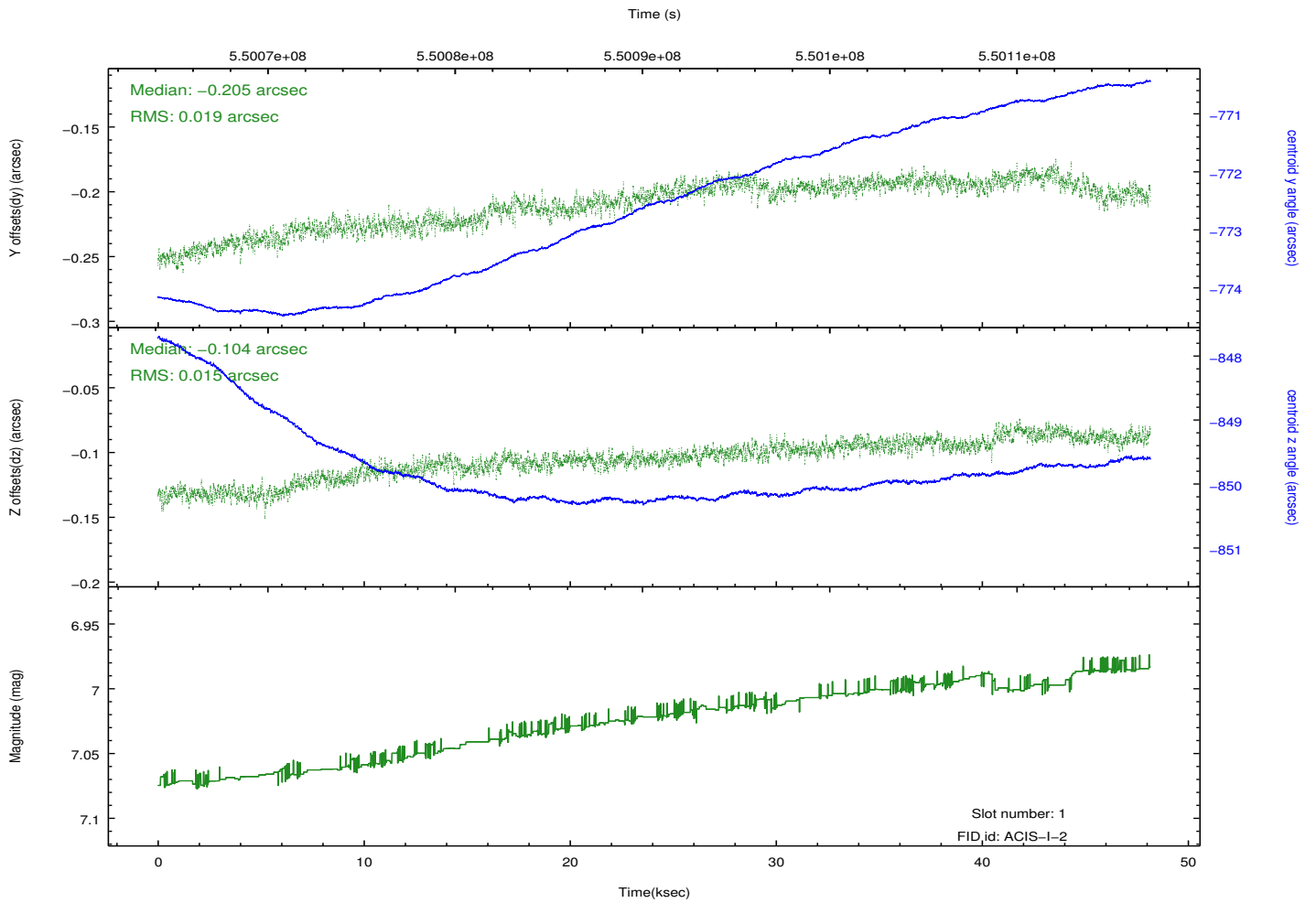
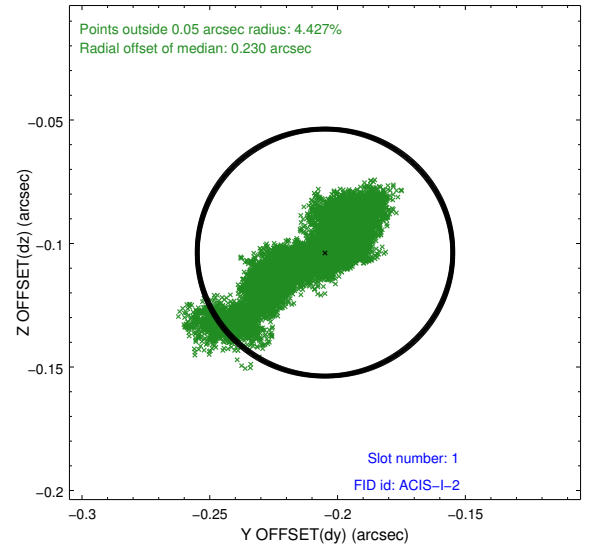
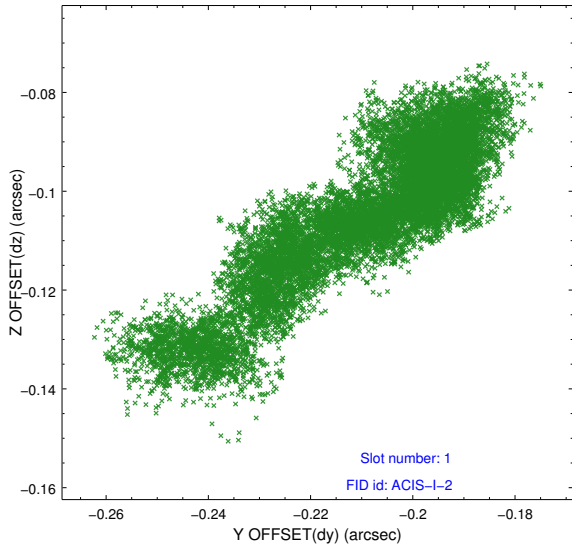


2.5 FID Slots

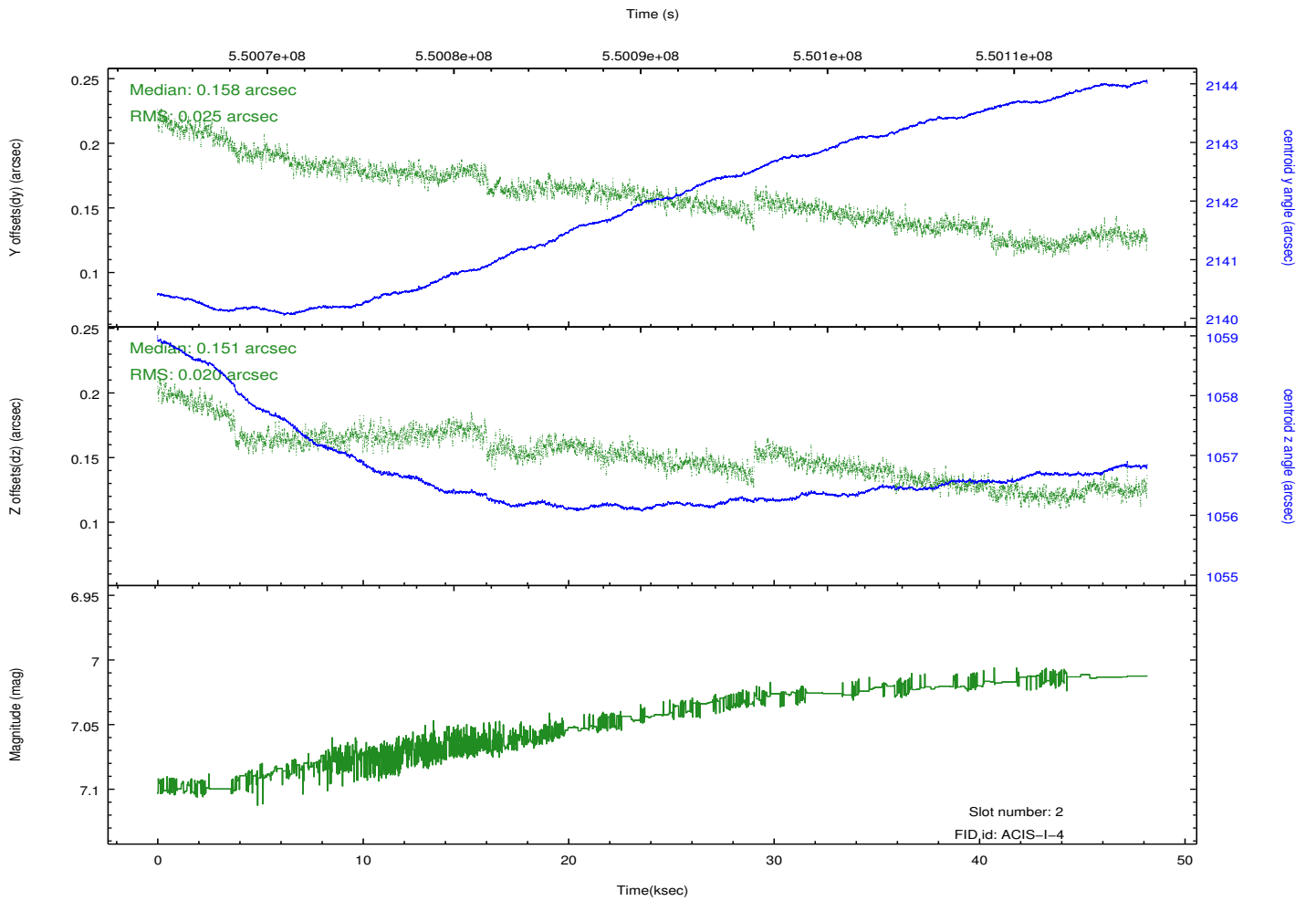
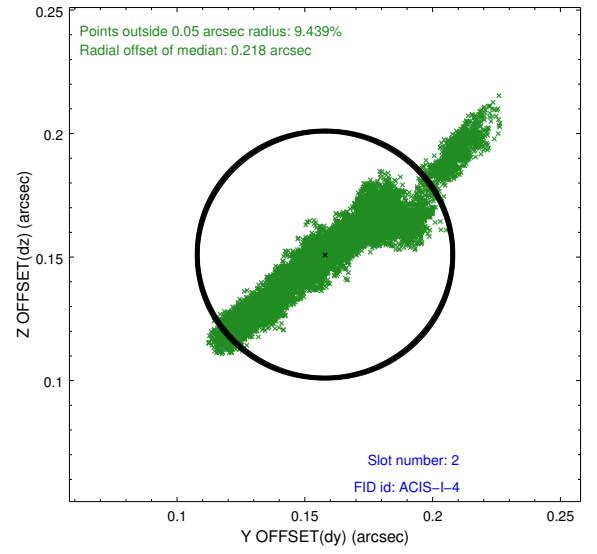
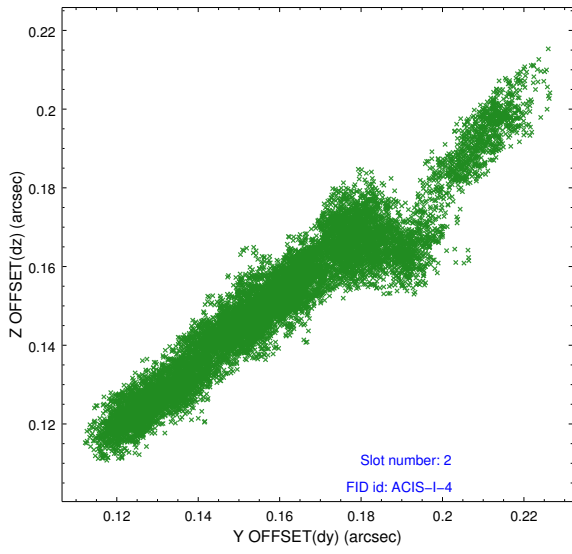
2.5.1 Slot 0



2.5.2 Slot 1



2.5.3 Slot 2



A Summary

A.1 Status

V&V Scientist	Jen Lauer
V&V Date (YYYY-MM-DD)	2015.06.08
V&V Edition	1
V&V Disposition and Status	OK
V&V Charge Time	48.083291967273

A.2 Comments

Window constraint met.