

V&V Reference Report

L2 ASCDS Version : 8.4.5

Observation 1876 - L2 Version 3
Chandra X-Ray Center

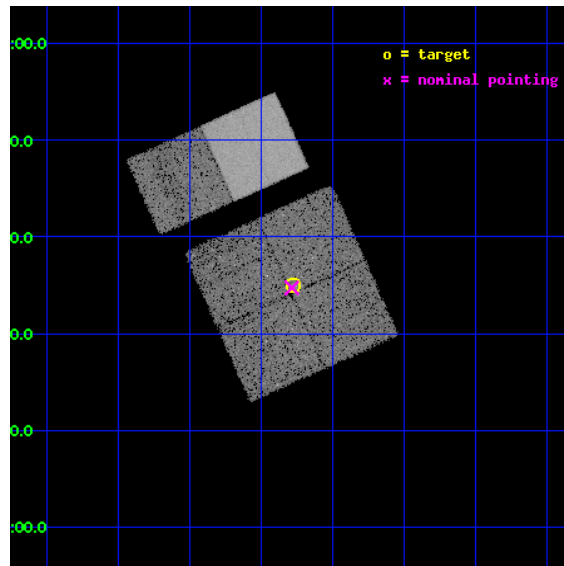
L2 Processing Date : Sep 6 2012

Contents

| | | |
|----------|-------------------------------|-----------|
| 1 | Front | 2 |
| 2 | OBI | 3 |
| 2.1 | OBI | 3 |
| 2.1.1 | Images | 3 |
| 2.1.2 | Bias | 3 |
| 2.1.3 | Parameters | 4 |
| 2.1.4 | Events | 4 |
| 2.2 | Compared Parameters | 5 |
| 2.3 | Aspect | 6 |
| 2.4 | Star Slots | 9 |
| 2.4.1 | Slot 3 | 9 |
| 2.4.2 | Slot 4 | 10 |
| 2.4.3 | Slot 5 | 11 |
| 2.4.4 | Slot 6 | 12 |
| 2.4.5 | Slot 7 | 13 |
| 2.5 | FID Slots | 14 |
| 2.5.1 | Slot 0 | 14 |
| 2.5.2 | Slot 1 | 15 |
| 2.5.3 | Slot 2 | 16 |
| A | Summary | 17 |
| A.1 | Status | 17 |
| A.2 | Comments | 17 |

1 Front

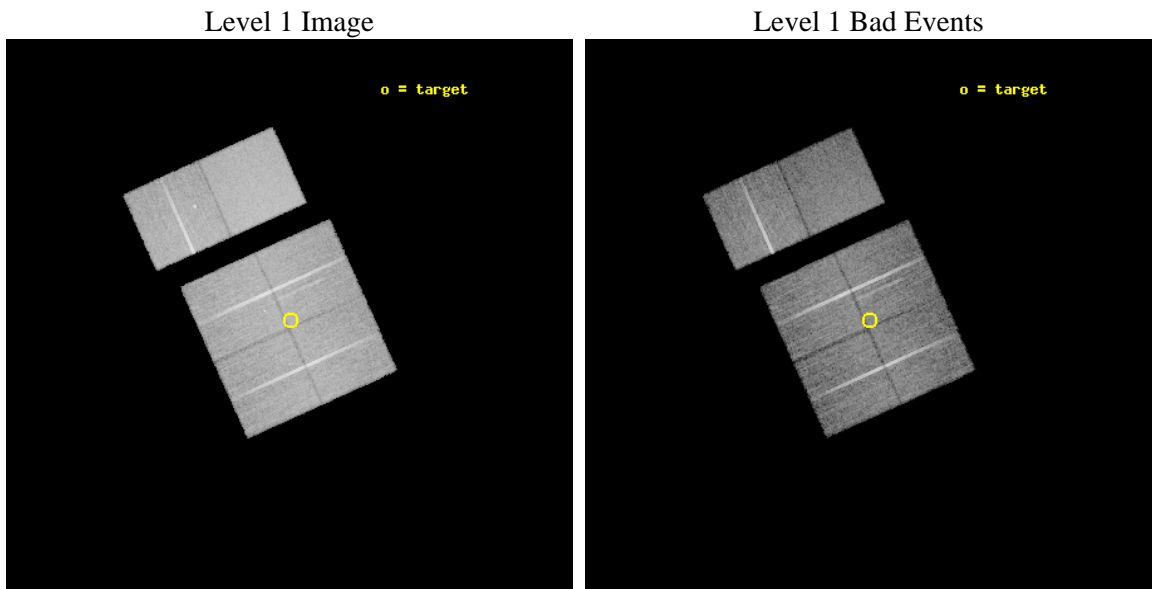
| | | |
|----------|---|---|
| seq_num | 200104 | Sequence number |
| obs_id | 1876 | Observation id |
| title | STAR FORMATION IN THE ROSETTE MOLECULAR CLOUD | Proposal title |
| observer | Dr. Leisa Townsley | Principal investigator |
| object | ROSETTE FIELD 3 | Source name |
| dtcycle | 0 | |
| cycle | P | events from which exps? Prim/Second/Both |
| ra_targ | 98.317917 | Observer's specified target RA [deg] |
| dec_targ | 4.5825 | Observer's specified target Dec [deg] |
| ra_nom | 98.321199923816 | Nominal RA [deg] |
| dec_nom | 4.5789421859242 | Nominal Dec [deg] |
| roll_nom | 335.76445693496 | Nominal Roll [deg] |
| revision | 3 | Processing version of data |
| ontime | 19756.800018385 | Sum of GTIs [s] |
| livetime | 19506.627520436 | Livetime [s] |
| ontime0 | 19756.800018385 | Sum of GTIs [s] |
| ontime1 | 19756.800018385 | Sum of GTIs [s] |
| ontime2 | 19756.800018385 | Sum of GTIs [s] |
| ontime3 | 19756.800018385 | Sum of GTIs [s] |
| ontime6 | 19756.800018385 | Sum of GTIs [s] |
| ontime7 | 19756.800018385 | Sum of GTIs [s] |
| l2events | 120585 | Number of level 2 events |



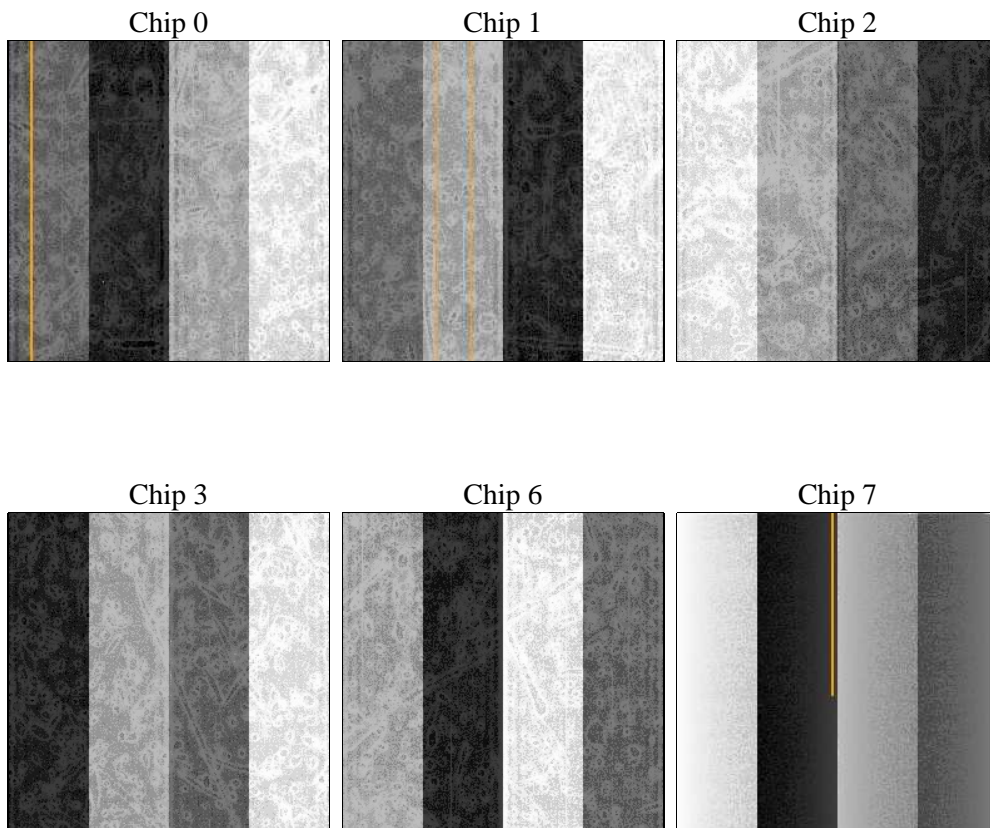
2 OBI

2.1 OBI

2.1.1 Images



2.1.2 Bias



2.1.3 Parameters

| | | | | | |
|----------|---------------------|--------------------------------|----------------|-----------------|---|
| obi_num | 0 | Obi number | sched_exp_time | 20000.000000 | [s] Scheduled observation exposure time |
| ascdsver | 8.4.5 | Processing system revision | ontime | 19756.800018385 | Sum of GTIs [s] |
| caldbver | 4.5.1.1 | | ontime0 | 19756.800018385 | Sum of GTIs [s] |
| date | 2012-09-06T09:32:33 | Date and time of file creation | ontime1 | 19756.800018385 | Sum of GTIs [s] |
| revision | 3 | Processing version of data | ontime2 | 19756.800018385 | Sum of GTIs [s] |
| | | | ontime3 | 19756.800018385 | Sum of GTIs [s] |
| | | | ontime6 | 19756.800018385 | Sum of GTIs [s] |
| | | | ontime7 | 19756.800018385 | Sum of GTIs [s] |
| | | | l1events | 730492 | Number of level 1 events |

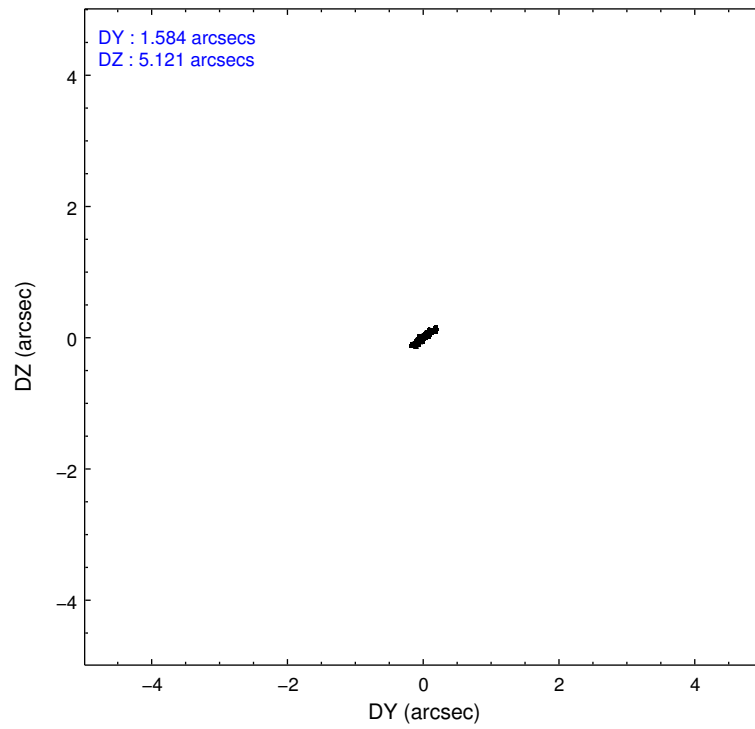
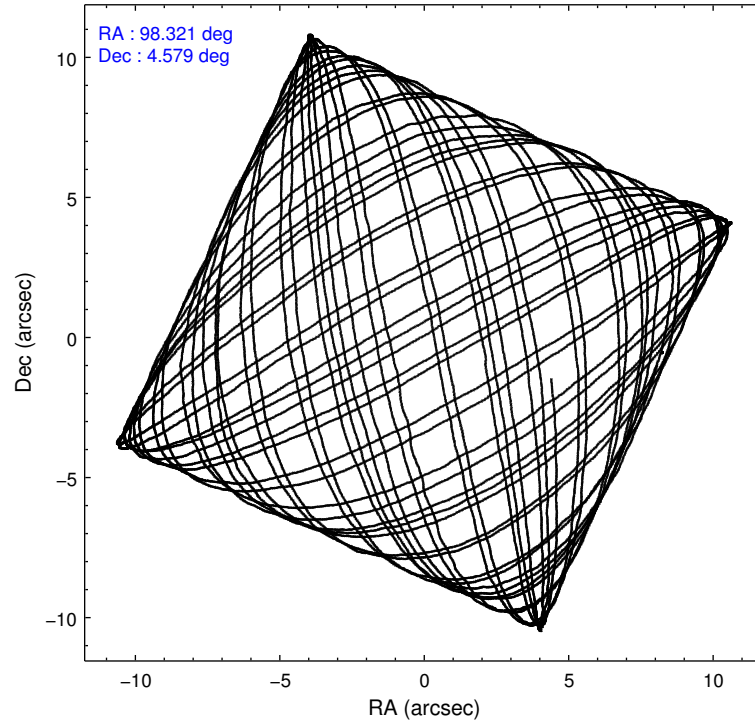
2.1.4 Events

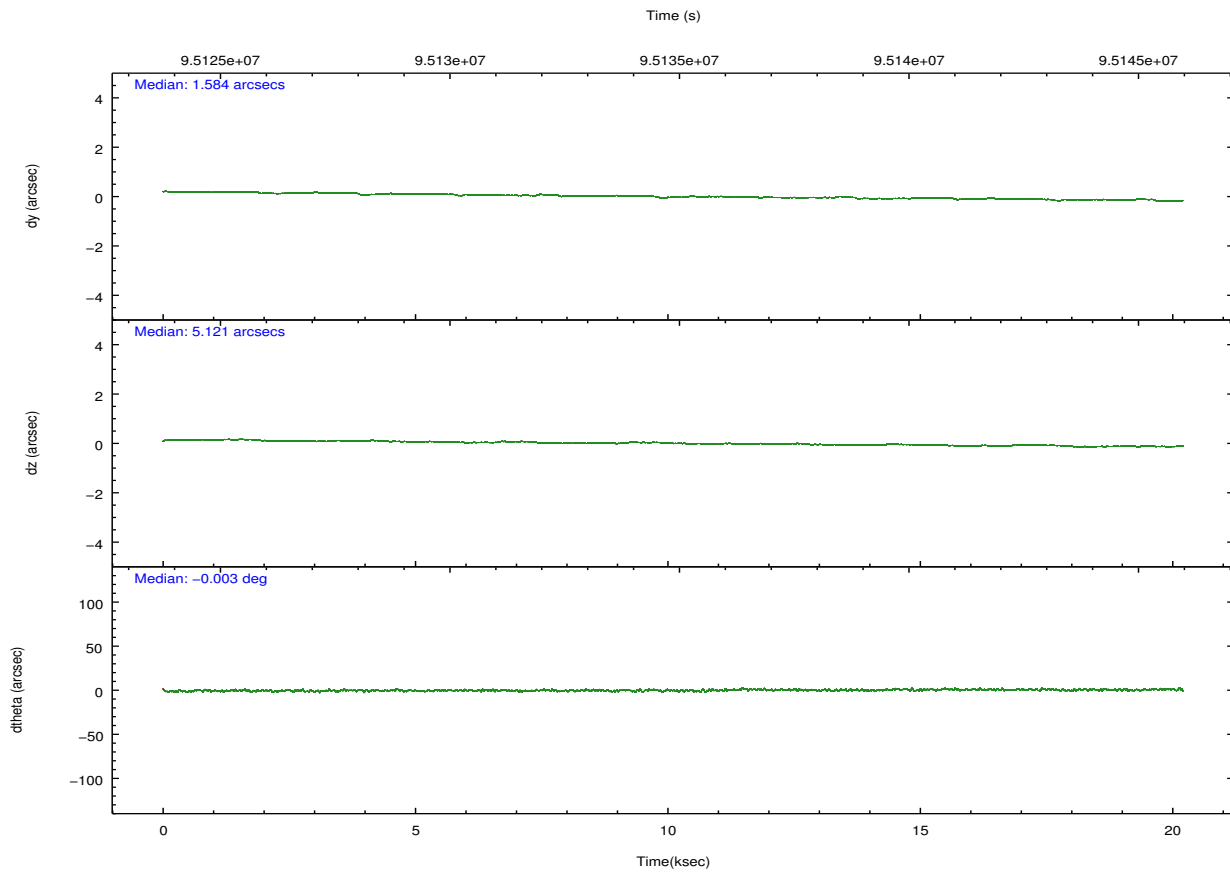
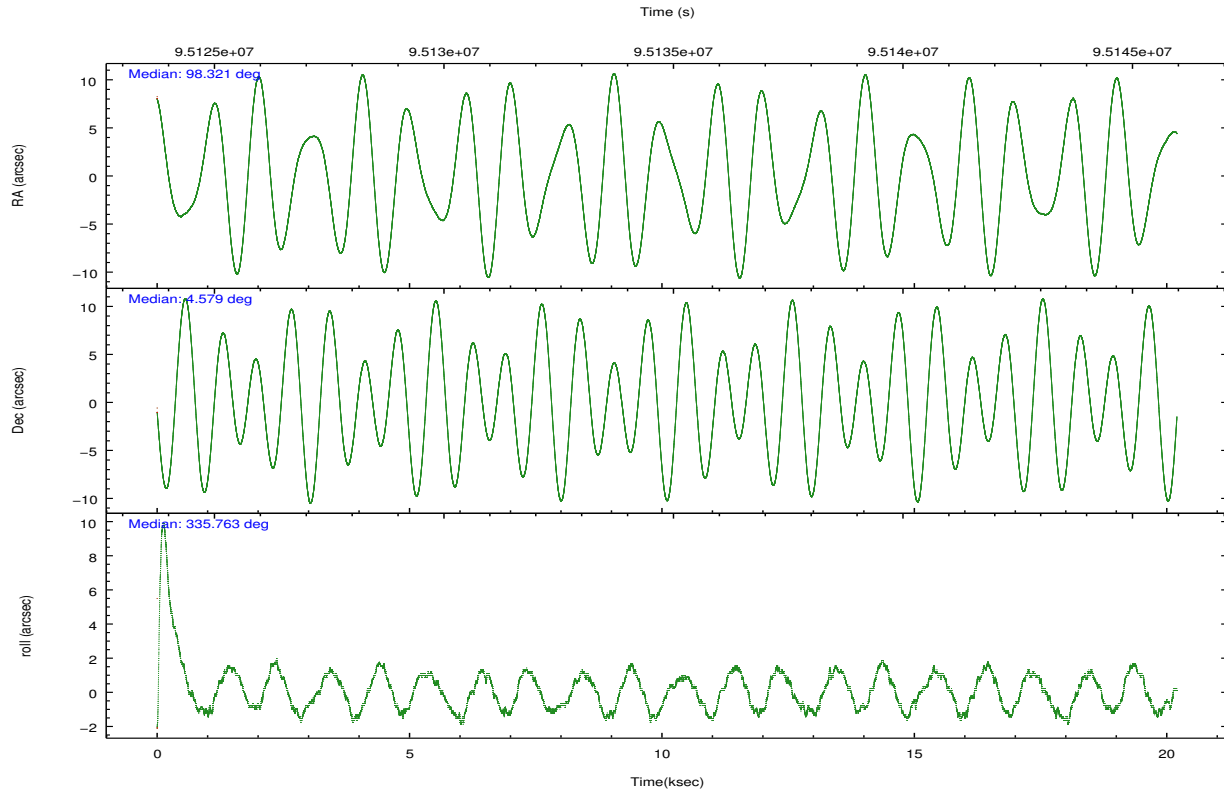
| | ccd 0 | ccd 1 | ccd 2 | ccd 3 | ccd 6 | ccd 7 | | ccd 0 | ccd 1 | ccd 2 | ccd 3 | ccd 6 | ccd 7 |
|-----------------|--------|--------|--------|--------|--------|--------|----------------|-------|-------|--------|-------|--------|-------|
| level 1 events | 108553 | 109006 | 122033 | 115002 | 125492 | 150406 | grade 0 events | 6246 | 5947 | 5971 | 5944 | 5994 | 5816 |
| rejected events | 94241 | 94562 | 108208 | 101498 | 111141 | 88005 | | 5% | 5% | 4% | 5% | 4% | 3% |
| rejected % | 86% | 86% | 88% | 88% | 88% | 58% | grade 1 events | 50 | 69 | 51 | 67 | 63 | 130 |
| | | | | | | | | 0% | 0% | 0% | 0% | 0% | 0% |
| | | | | | | | grade 2 events | 2974 | 2845 | 2920 | 2657 | 2712 | 12174 |
| | | | | | | | | 2% | 2% | 2% | 2% | 2% | 8% |
| | | | | | | | grade 3 events | 1372 | 1493 | 1287 | 1258 | 1451 | 5705 |
| | | | | | | | | 1% | 1% | 1% | 1% | 1% | 3% |
| | | | | | | | grade 4 events | 1289 | 1436 | 1238 | 1276 | 1423 | 5859 |
| | | | | | | | | 1% | 1% | 1% | 1% | 1% | 3% |
| | | | | | | | grade 5 events | 4262 | 4418 | 3938 | 4472 | 5089 | 14295 |
| | | | | | | | | 3% | 4% | 3% | 3% | 4% | 9% |
| | | | | | | | grade 6 events | 2433 | 2730 | 2414 | 2373 | 2772 | 32861 |
| | | | | | | | | 2% | 2% | 1% | 2% | 2% | 21% |
| | | | | | | | grade 7 events | 89927 | 90068 | 104214 | 96955 | 105988 | 73566 |
| | | | | | | | | 82% | 82% | 85% | 84% | 84% | 48% |

2.2 Compared Parameters

| Parameter | Planned | Actual | Parameter | Planned | Actual |
|-----------------------------------|---------------------|-----------------------|---------------------------------------|-----------|---------|
| Instrument | ACIS | ACIS | Obspar format version number | 7 | 7 |
| Detector | ACIS-012367 | ACIS-012367 | Obspar file type | PREDICTED | ACTUAL |
| Grating | NONE | NONE | Obspar update status | NONE | UPDATED |
| Data mode | FAINT | FAINT | Number of optional ACIS chips dropped | 0 | 0 |
| Observation mode | POINTING | POINTING | On-chip summing requested | N | N |
| [deg] Pointing RA | 98.293751 | 98.3211999238161 | Subarray requested | NONE | NONE |
| [deg] Pointing Dec | 4.576238 | 4.578942185924212 | Alternating exposures requested | N | N |
| [deg] Pointing Roll | 335.557964 | 335.764456934964 | [s] Primary exposure time | 0.000000 | 3.2 |
| [mm] SIM focus pos | -0.782348 | -0.7809083437167272 | | | |
| [mm] SIM defocus | 0 | 0.001439871863259334 | | | |
| [mm] SIM translation stage pos | -233.592463 | -233.5874344608287 | | | |
| [mm] SIM translation stage offset | 0 | -0.005018542100998502 | | | |
| [s] Observation start time (MET) | 95124961.184000 | 95124585.042761 | | | |
| Observation start date | 2001-01-05T23:34:57 | 2001-01-05T23:29:45 | | | |
| [s] Observation end time (MET) | 95144961.184000 | 95145095.293547 | | | |
| Observation end date | 2001-01-06T05:08:17 | 2001-01-06T05:11:35 | | | |
| Read mode | TIMED | TIMED | | | |

2.3 Aspect



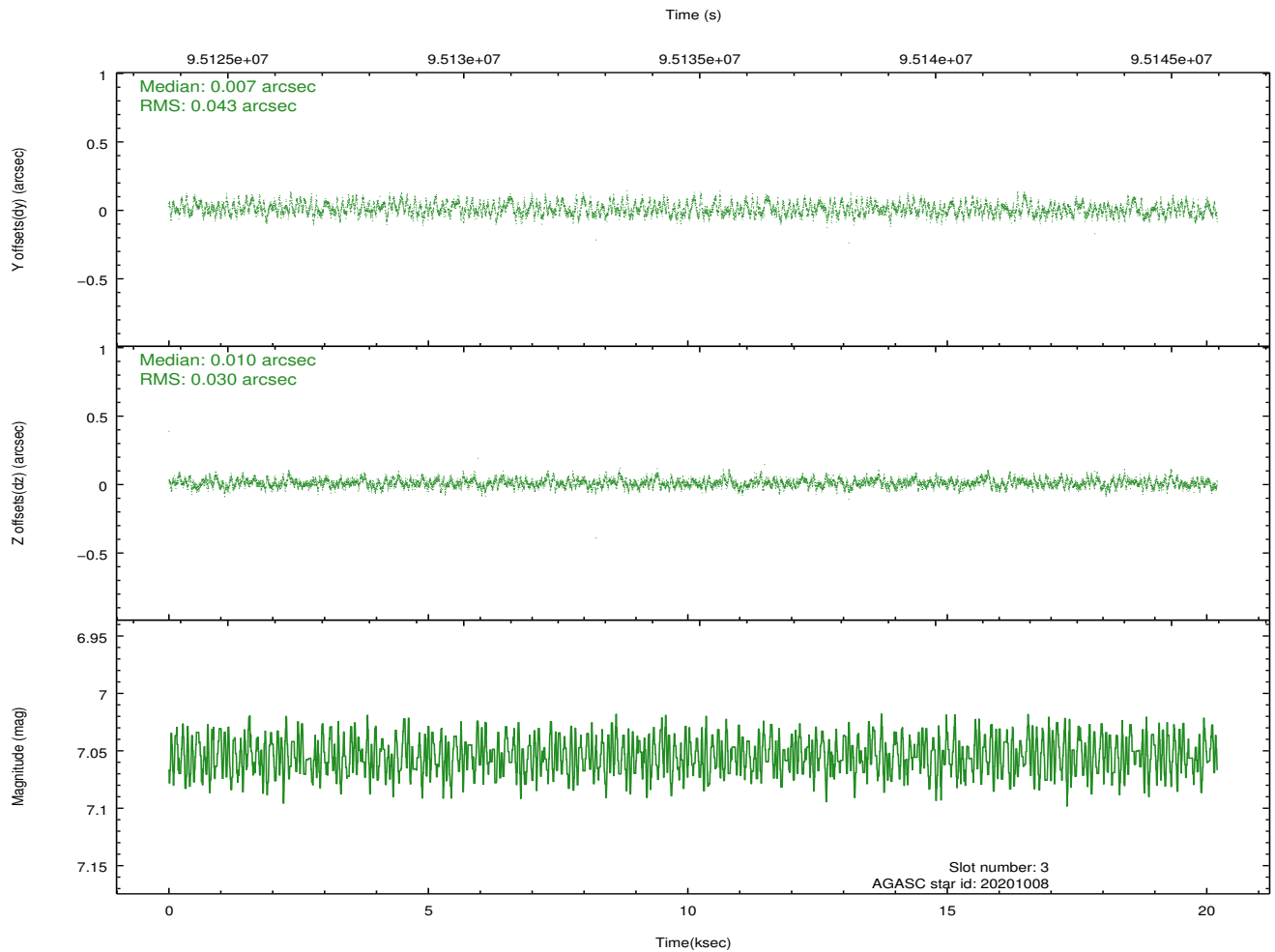
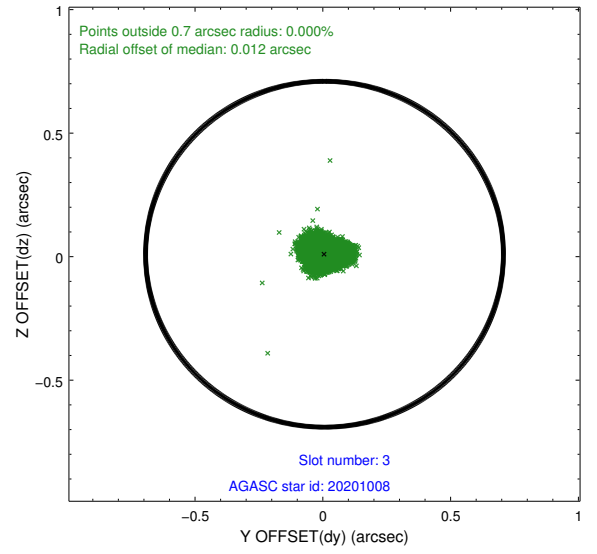
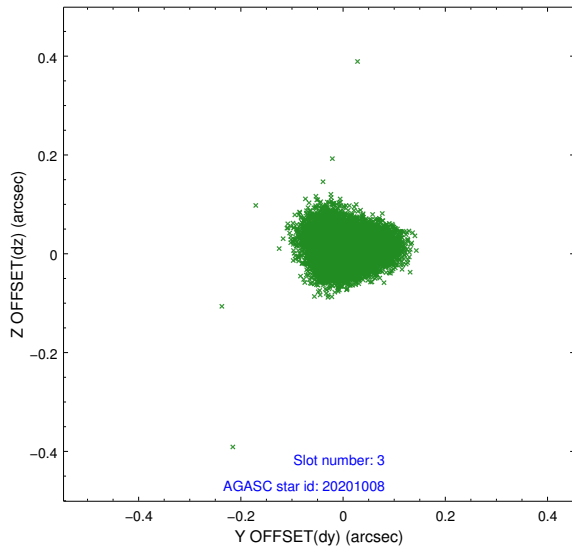


Slot Statistics

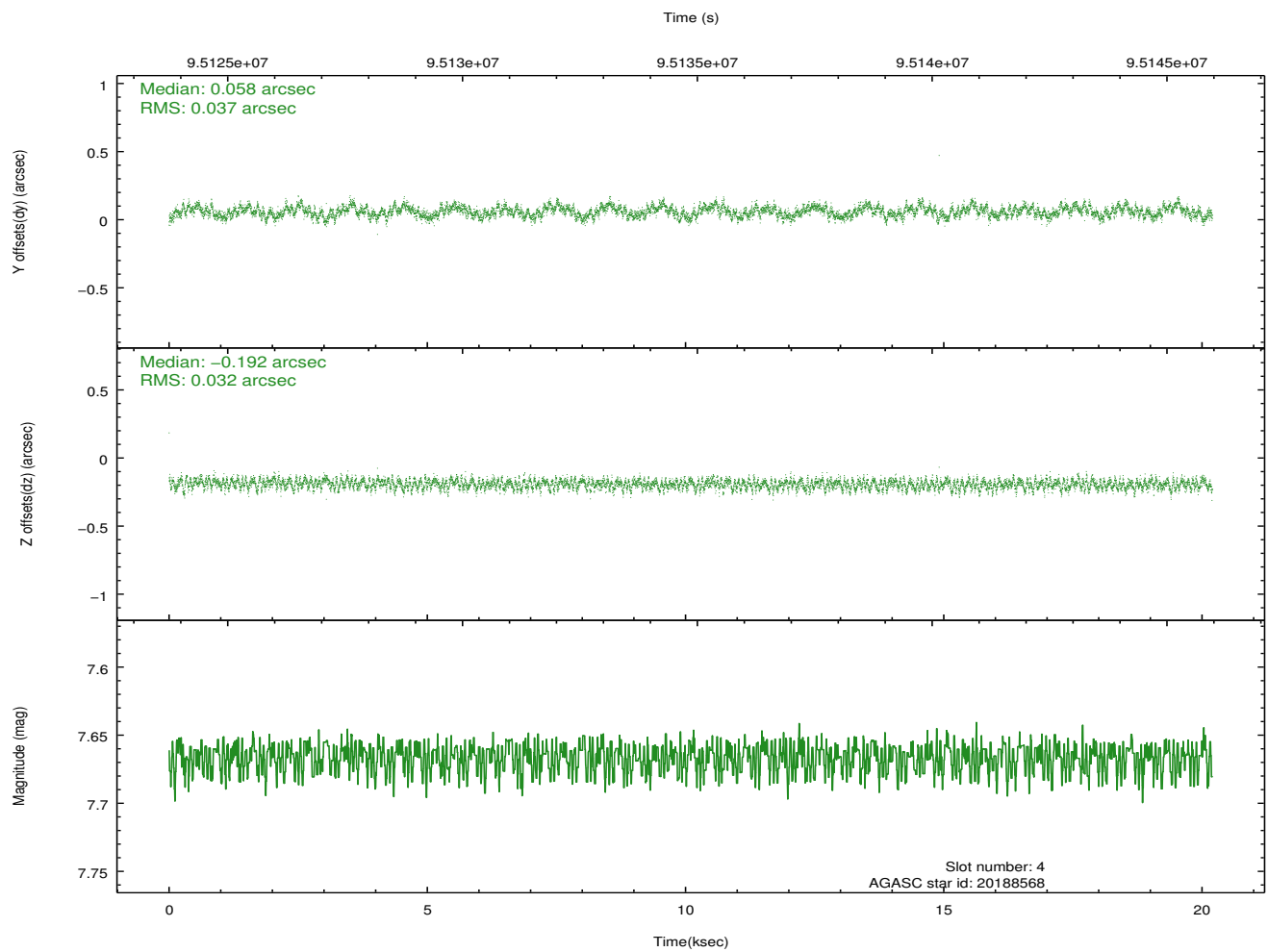
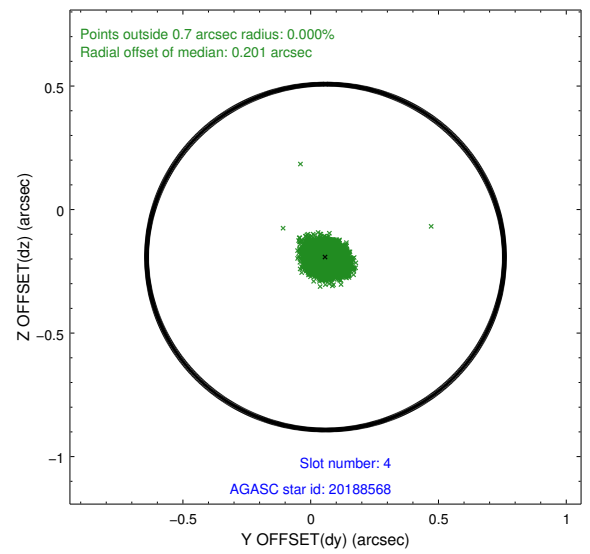
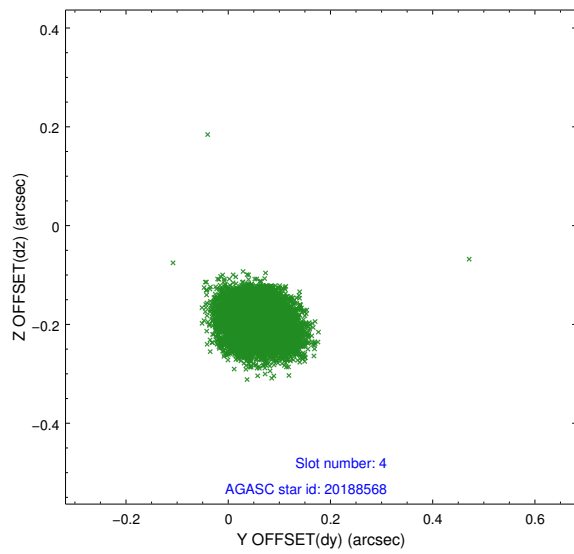
| slot | status | id | mag | n_pts | med_dy | med_dz | dr1 | dr2 | ra | dec | mean_y | mean_z |
|------|--------|----------|------|-------|--------|--------|-------|-------|-----------|----------|----------|----------|
| 0 | FID | ACIS-I-2 | 7.15 | 4928 | -0.053 | -0.015 | 0.008 | 0.015 | 0.000000 | 0.000000 | -755.97 | -834.86 |
| 1 | FID | ACIS-I-4 | 7.19 | 4926 | -0.030 | 0.024 | 0.010 | 0.016 | 0.000000 | 0.000000 | 2158.00 | 1071.31 |
| 2 | FID | ACIS-I-6 | 7.27 | 4927 | -0.017 | 0.053 | 0.010 | 0.017 | 0.000000 | 0.000000 | 404.34 | 1713.70 |
| 3 | GUIDE | 20201008 | 7.06 | 9852 | 0.007 | 0.010 | 0.056 | 0.089 | 99.000440 | 4.498035 | 2424.53 | 794.51 |
| 4 | GUIDE | 20188568 | 7.67 | 9854 | 0.058 | -0.192 | 0.052 | 0.083 | 98.433538 | 5.215985 | -496.91 | 2304.10 |
| 5 | GUIDE | 20203472 | 7.86 | 9855 | -0.001 | 0.114 | 0.050 | 0.079 | 98.653479 | 4.344261 | 1520.56 | -225.17 |
| 6 | GUIDE | 20185648 | 7.57 | 9853 | -0.028 | -0.015 | 0.066 | 0.098 | 98.038775 | 4.823536 | -1201.41 | 432.22 |
| 7 | GUIDE | 20194960 | 7.68 | 9853 | -0.041 | 0.086 | 0.048 | 0.080 | 97.758599 | 4.508135 | -1647.77 | -1017.13 |

2.4 Star Slots

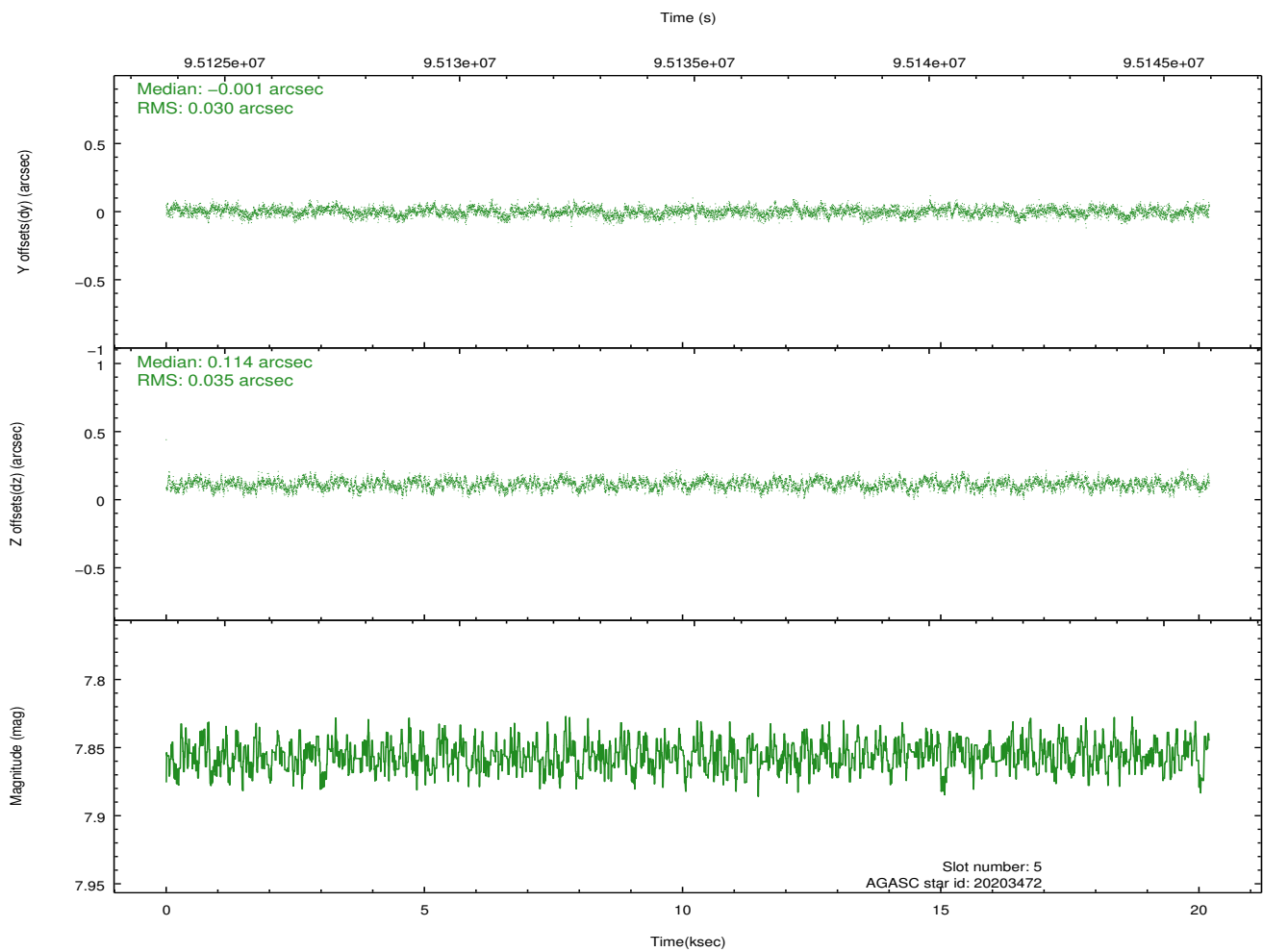
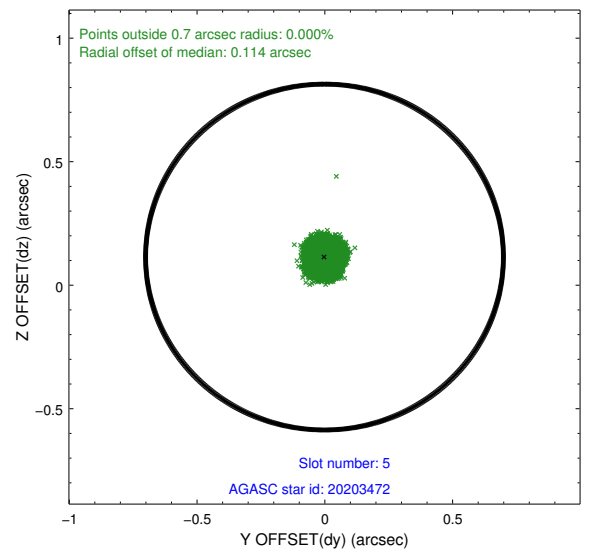
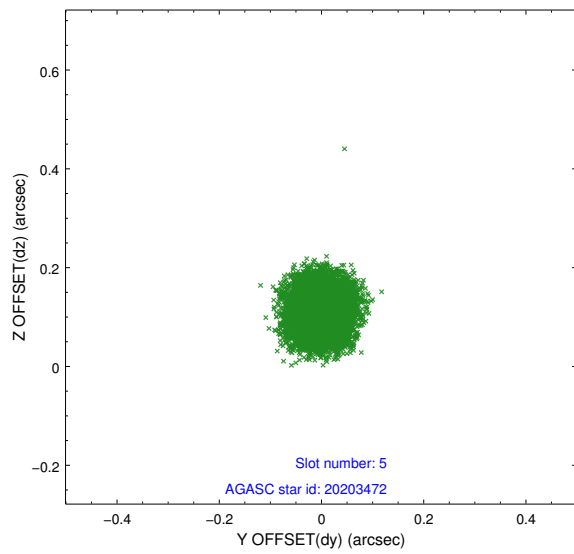
2.4.1 Slot 3



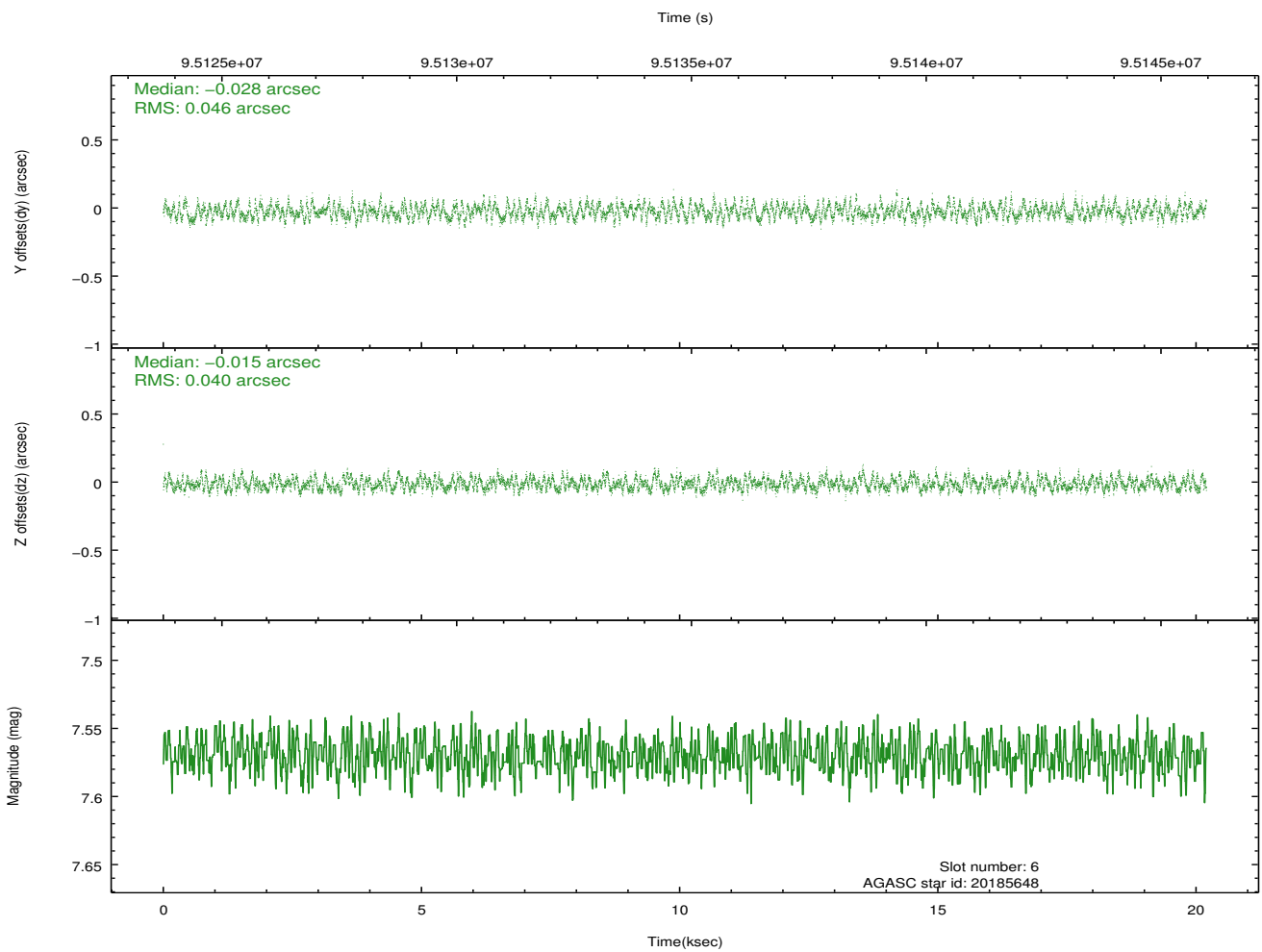
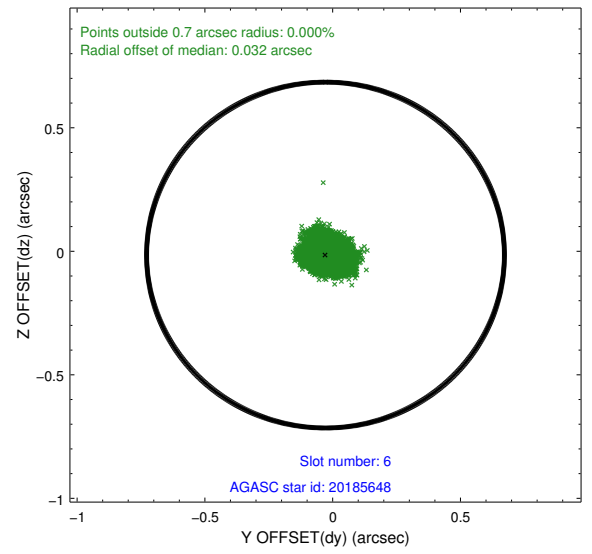
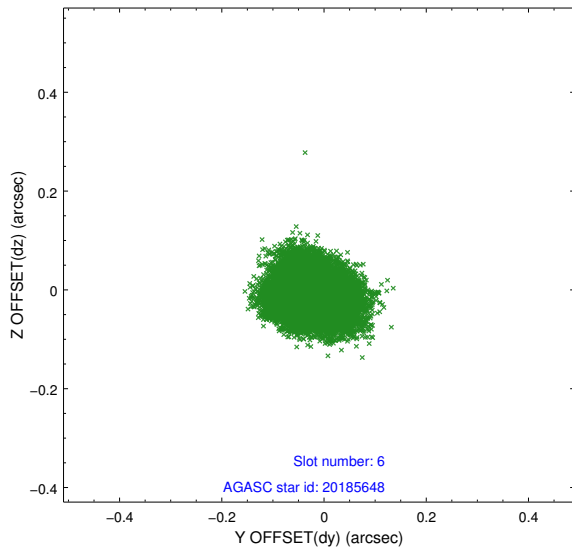
2.4.2 Slot 4



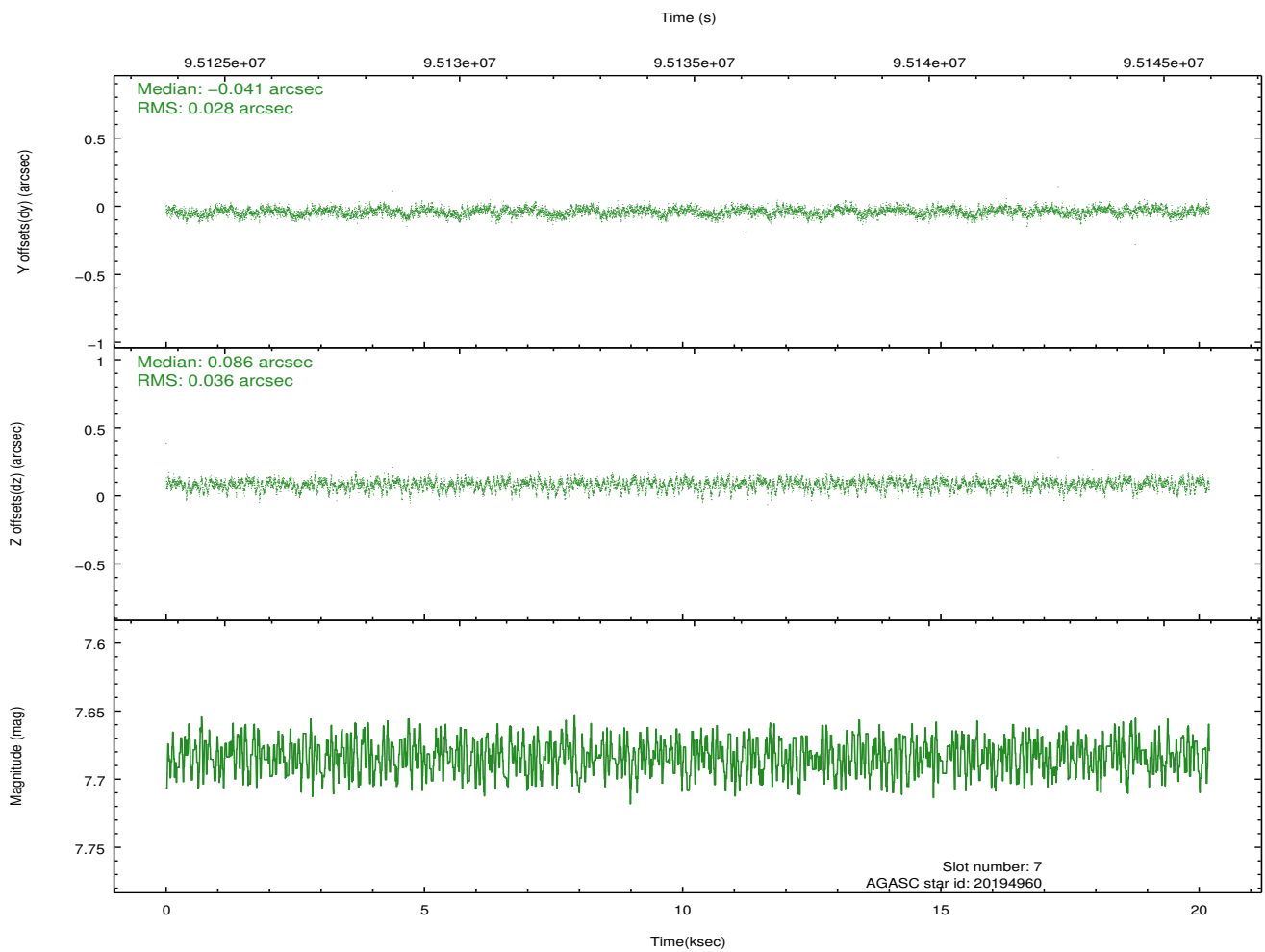
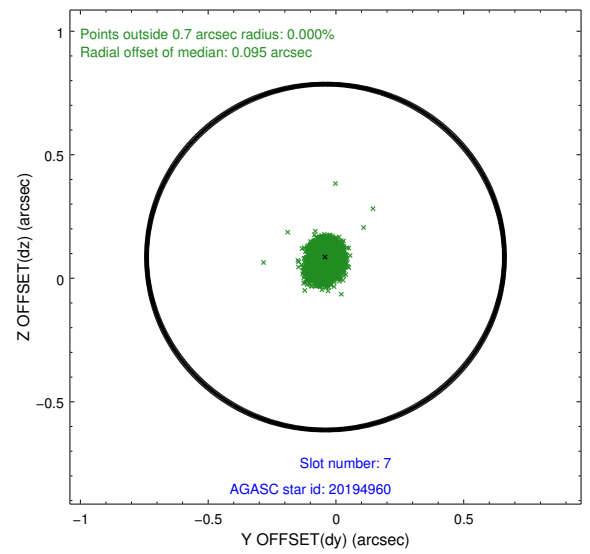
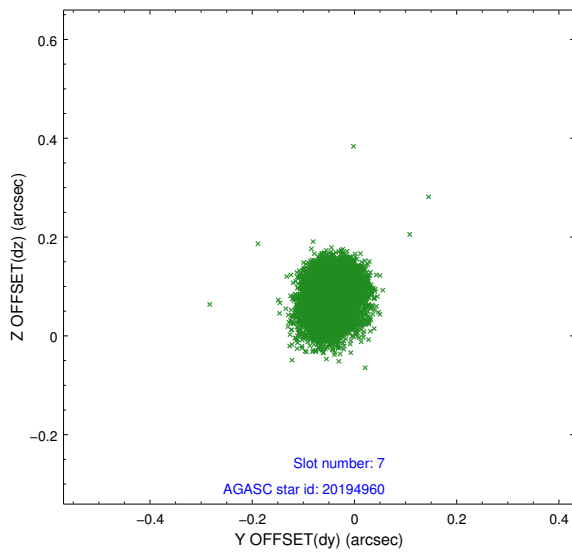
2.4.3 Slot 5



2.4.4 Slot 6

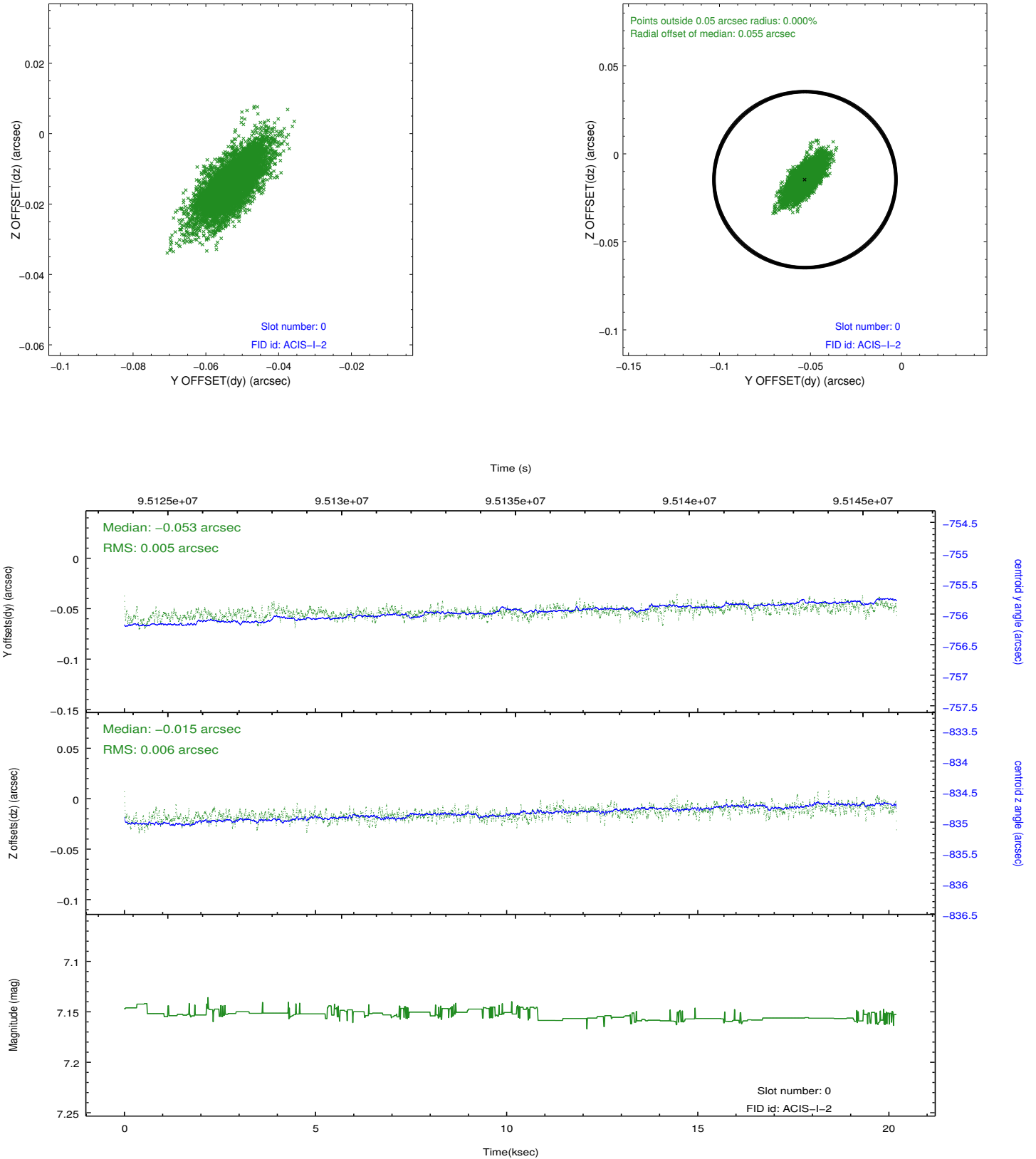


2.4.5 Slot 7

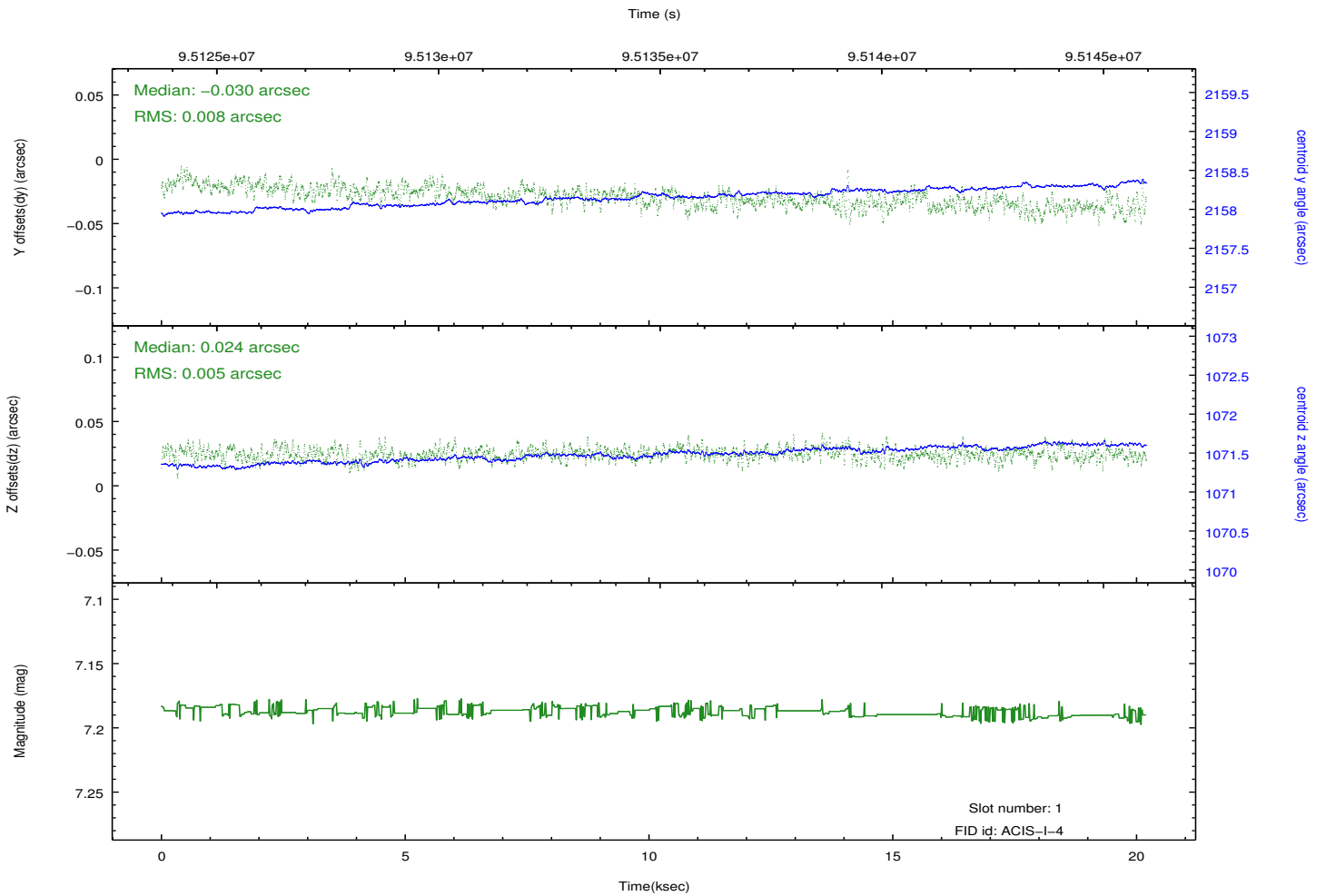
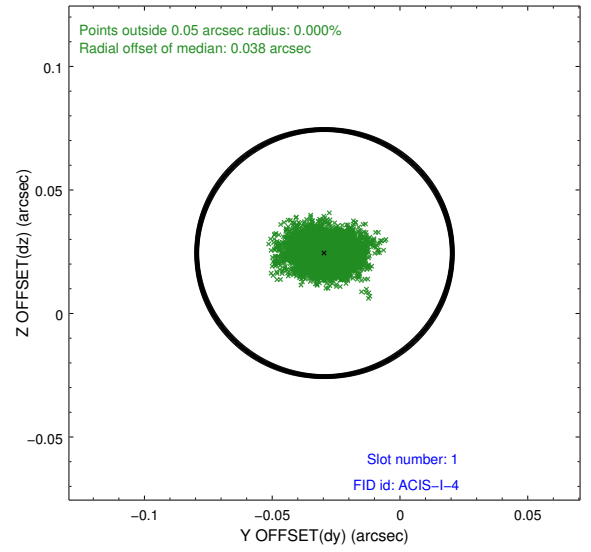
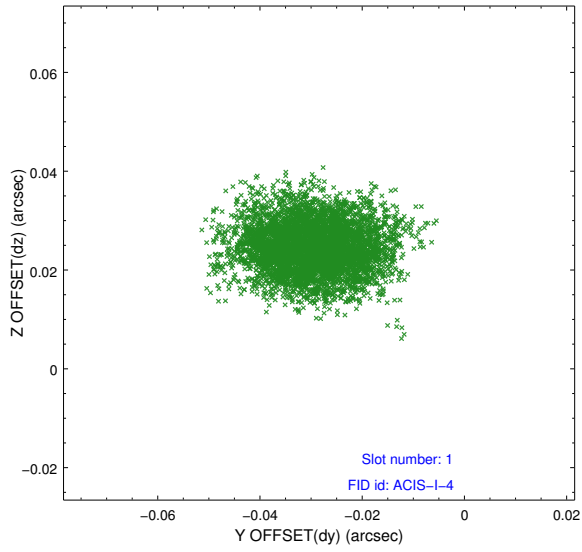


2.5 FID Slots

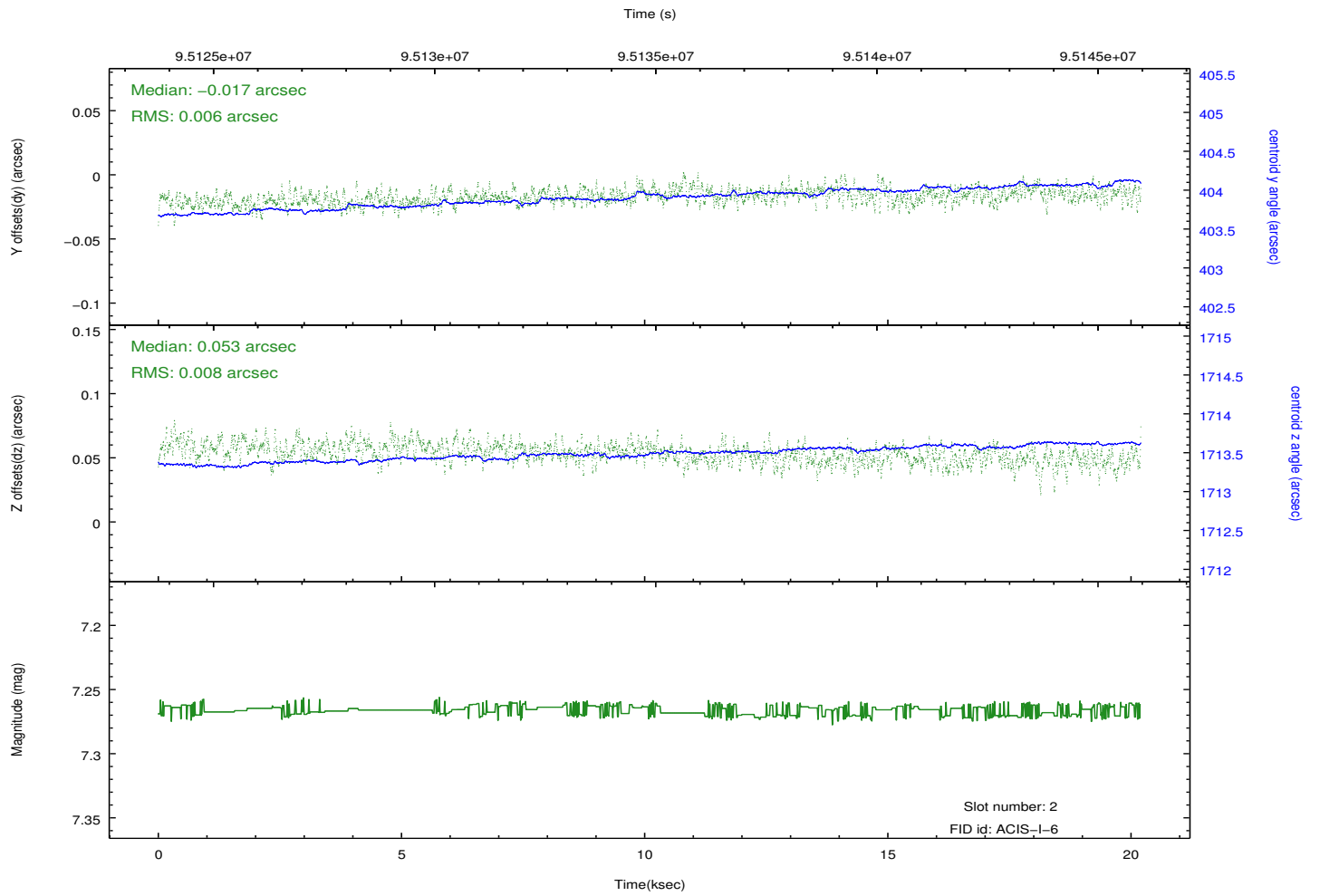
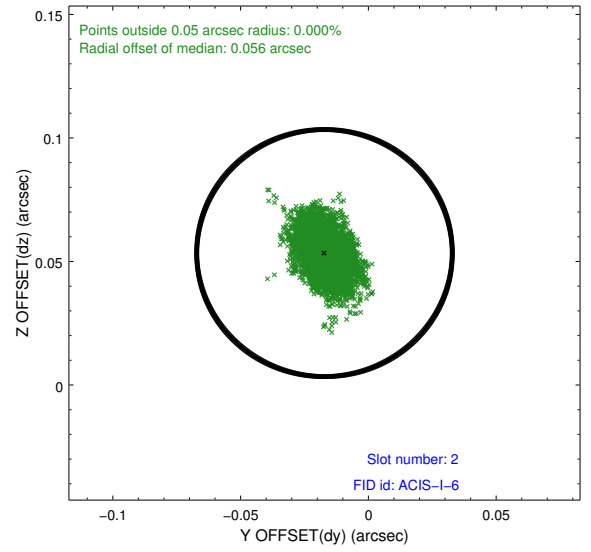
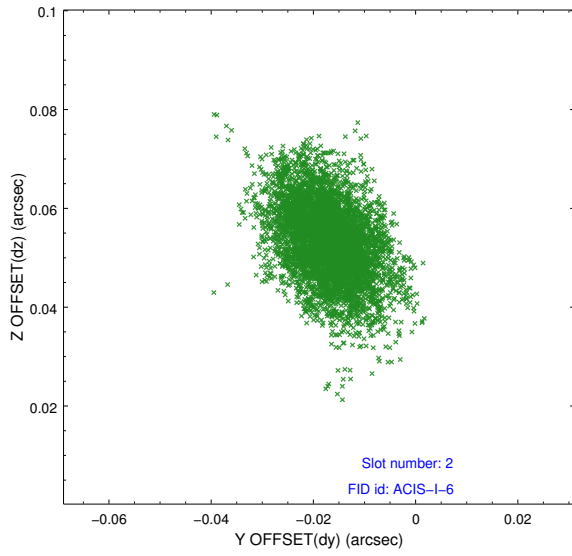
2.5.1 Slot 0



2.5.2 Slot 1



2.5.3 Slot 2



A Summary

A.1 Status

| | |
|----------------------------|------------|
| V&V Scientist | Jen Lauer |
| V&V Date (YYYY-MM-DD) | 2012.09.14 |
| V&V Edition | 1 |
| V&V Disposition and Status | OK |
| V&V Charge Time | 19.657 |

A.2 Comments

Charge time for this ObsId remains at previous value of 19.657 ks although with the current processing the charge time would have been 19.76 ksec.