

V&V Reference Report

L2 ASCDS Version : 8.4.5

Observation 1946 - L2 Version 5
Chandra X-Ray Center

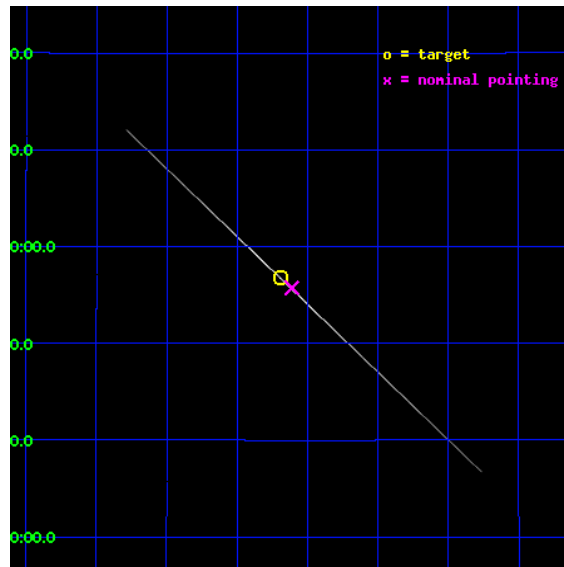
L2 Processing Date : Sep 21 2012

Contents

1	Front	2
2	OBI	3
2.1	OBI	3
2.1.1	Images	3
2.1.2	Parameters	4
2.1.3	Events	4
2.2	Compared Parameters	5
2.3	Aspect	6
2.4	Star Slots	9
2.4.1	Slot 3	9
2.4.2	Slot 4	10
2.4.3	Slot 5	11
2.4.4	Slot 6	12
2.4.5	Slot 7	13
2.5	FID Slots	14
2.5.1	Slot 0	14
2.5.2	Slot 1	15
2.5.3	Slot 2	16
3	Gratings	17
3.1	HEG Arm	17
3.2	MEG Arm	19
A	Summary	21
A.1	Status	21
A.2	Comments	21

1 Front

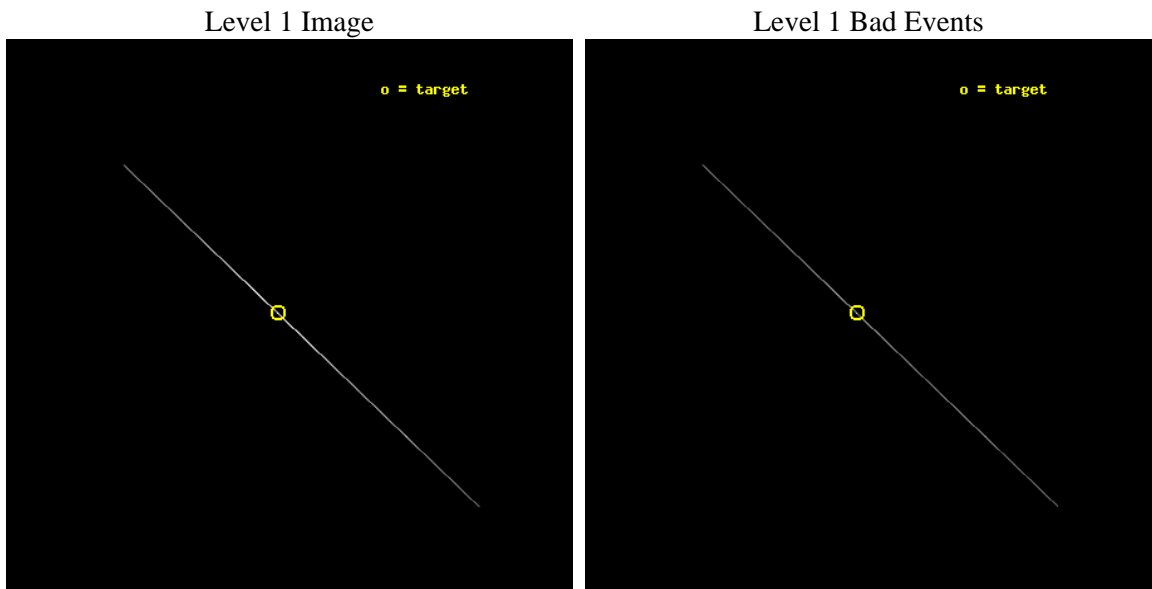
seq_num	400159	Sequence number
obs_id	1946	Observation id
title	ACCRETION DISK STRUCTURE IN VARIOUS SPECTRAL STATES OF GRS 1915+105	
observer	Dr. Ronald Remillard	Principal investigator
object	GRS 1915+105	Source name
ra_targ	288.798333	Observer's specified target RA [deg]
dec_targ	10.945806	Observer's specified target Dec [deg]
ra_nom	288.77767163073	Nominal RA [deg]
dec_nom	10.929013467269	Nominal Dec [deg]
roll_nom	223.51590519613	Nominal Roll [deg]
revision	5	Processing version of data
ontime	28554.874953434	Sum of GTIs [s]
livetime	28443.332473147	Livetime [s]
ontime4	28554.874867588	Sum of GTIs [s]
ontime5	28554.874866039	Sum of GTIs [s]
ontime6	28554.874864772	Sum of GTIs [s]
ontime7	28554.874953434	Sum of GTIs [s]
ontime8	28554.874862447	Sum of GTIs [s]
ontime9	28554.874950826	Sum of GTIs [s]
l2events	3900453	Number of level 2 events



2 OBI

2.1 OBI

2.1.1 Images



2.1.2 Parameters

obi_num	0	Obi number	sched_exp_time	28000.000000	[s] Scheduled observation exposure time
ascdsver	8.4.5	Processing system revision	ontime	28554.874953434	Sum of GTIs [s]
caldsver	4.5.1.1	 	ontime4	28554.874867588	Sum of GTIs [s]
date	2012-09-21T11:52:57	Date and time of file creation	ontime5	28554.874866039	Sum of GTIs [s]
revision	4	Processing version of data	ontime6	28554.874864772	Sum of GTIs [s]
			ontime7	28554.874953434	Sum of GTIs [s]
			ontime8	28554.874862447	Sum of GTIs [s]
			ontime9	28554.874950826	Sum of GTIs [s]
			l1events	4248999	Number of level 1 events

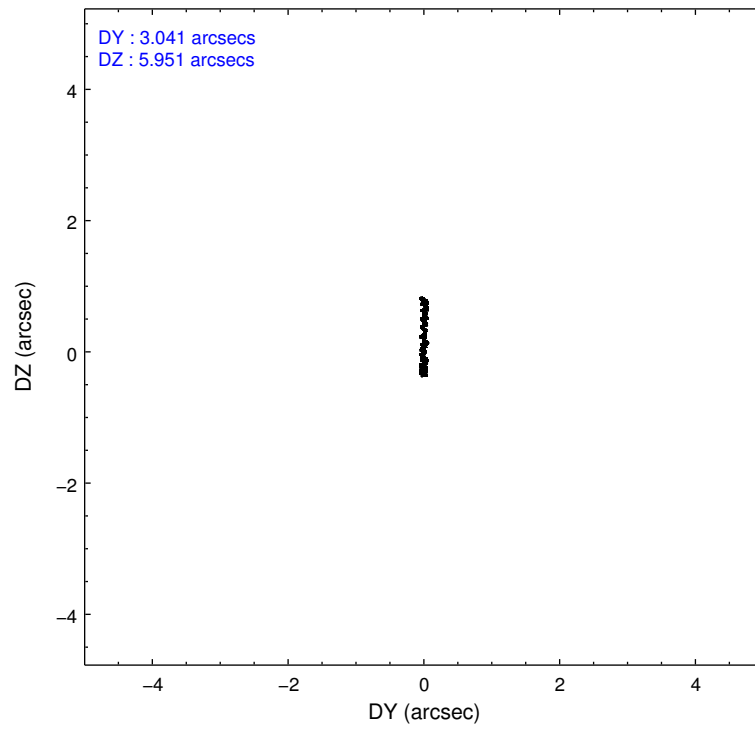
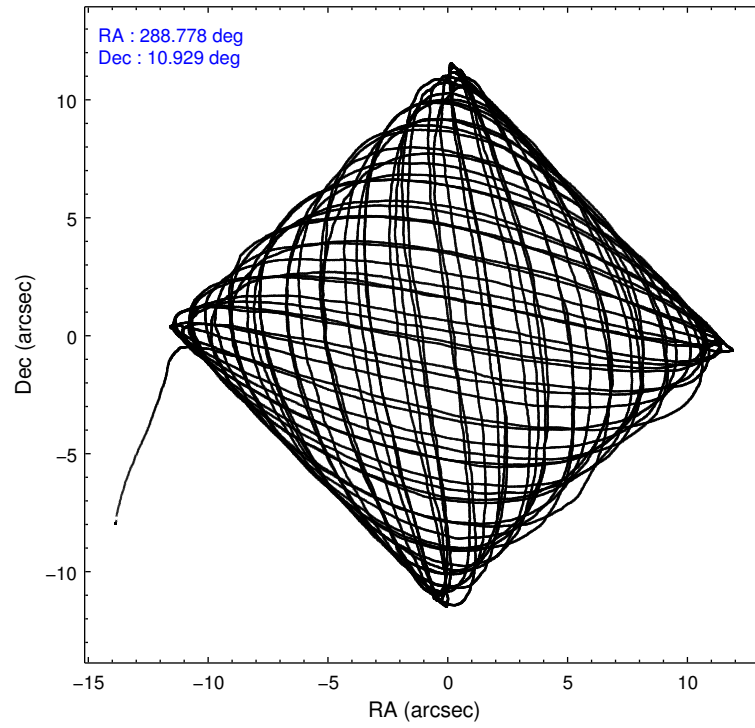
2.1.3 Events

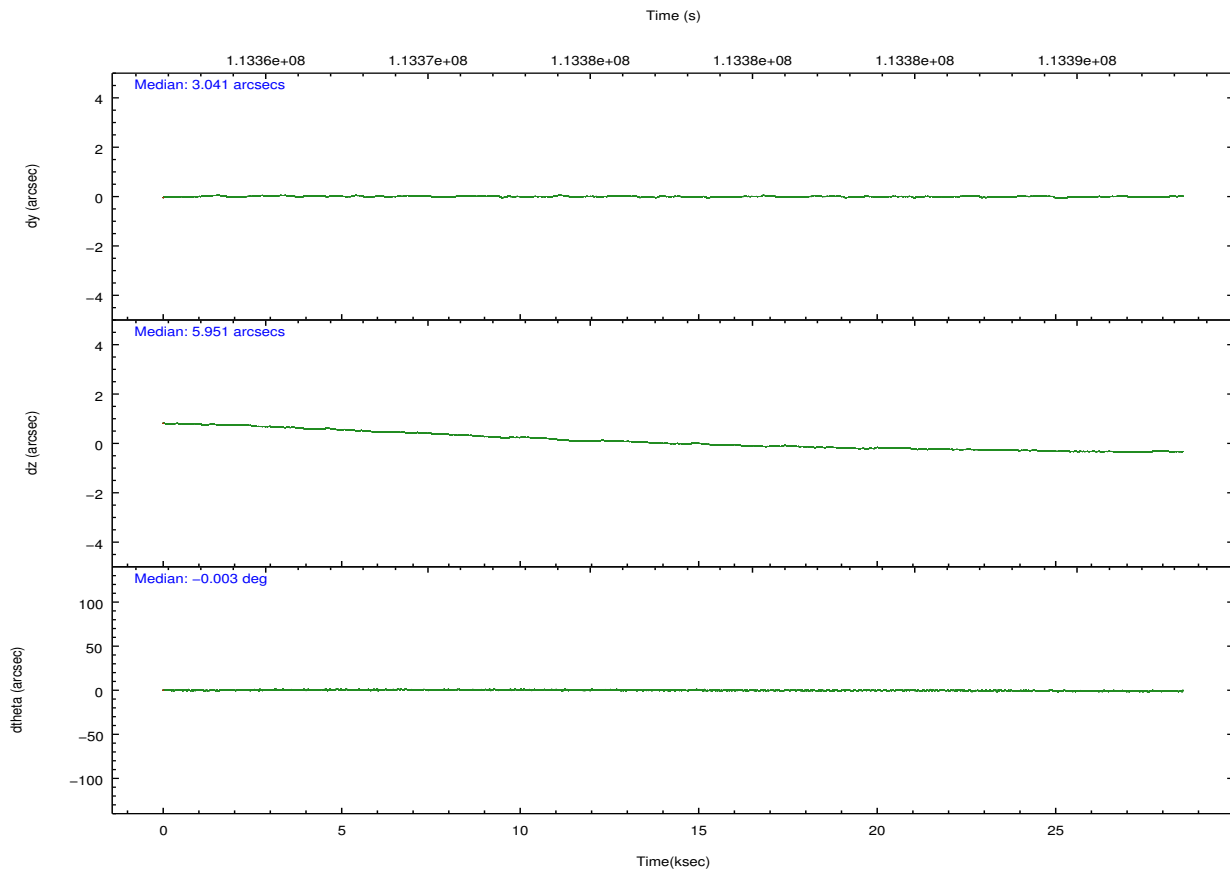
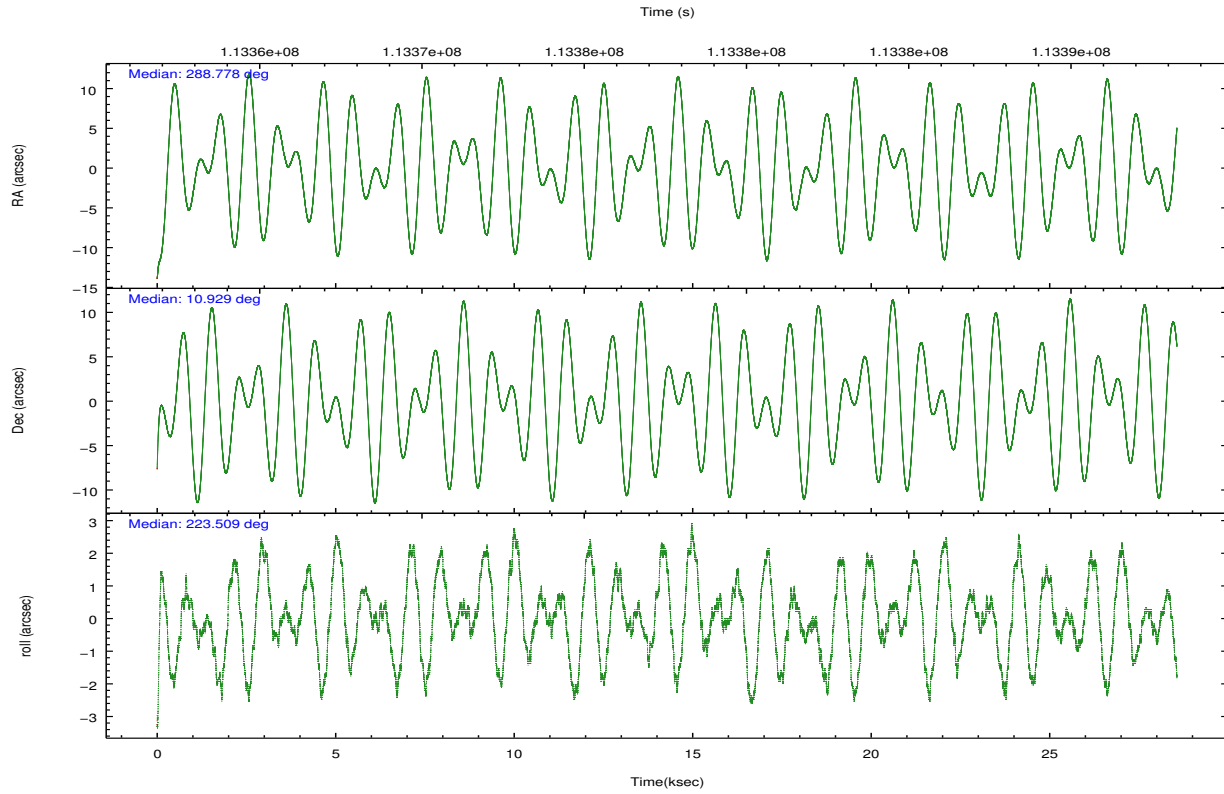
	ccd 4	ccd 5	ccd 6	ccd 7	ccd 8	ccd 9		ccd 4	ccd 5	ccd 6	ccd 7	ccd 8	ccd 9
level 1 events	65789	245819	878872	2406781	542723	109015	grade 0 events	8320	27385	122802	355845	213303	24793
rejected events	7013	18645	15747	64789	15616	8839		12%	11%	13%	14%	39%	22%
rejected %	10%	7%	1%	2%	2%	8%	grade 1 events	107	181	485	4430	661	198
								0%	0%	0%	0%	0%	0%
							grade 2 events	31768	82474	633843	673269	237104	50730
								48%	33%	72%	27%	43%	46%
							grade 3 events	5269	7044	10777	204543	17669	5757
								8%	2%	1%	8%	3%	5%
							grade 4 events	5240	6824	10566	202469	17457	6413
								7%	2%	1%	8%	3%	5%
							grade 5 events	6267	15534	11529	48517	11669	7806
								9%	6%	1%	2%	2%	7%
							grade 6 events	8818	106377	88870	917708	44860	13318
								13%	43%	10%	38%	8%	12%
							grade 7 events	0	0	0	0	0	0
								0%	0%	0%	0%	0%	0%

2.2 Compared Parameters

Parameter	Planned	Actual	Parameter	Planned	Actual
Instrument	ACIS	ACIS	Obspar format version number	7	7
Detector	ACIS-456789	ACIS-456789	Obspar file type	PREDICTED	ACTUAL
Grating	HETG	HETG	Obspar update status	NONE	UPDATED
Data mode	CC33_GRADED	CC33_GRADED	Number of optional ACIS chips dropped	0	0
Observation mode	POINTING	POINTING	On-chip summing requested	N	N
[deg] Pointing RA	288.785283	288.7776716307255	Subarray requested	NONE	NONE
[deg] Pointing Dec	10.955245	10.92901346726924	Alternating exposures requested	N	N
[deg] Pointing Roll	223.357837	223.515905196129	[s] Primary exposure time	0.000000	0
[mm] SIM focus pos	-0.684267	-0.6828225247311905			
[mm] SIM defocus	0	0.001444936568705701			
[mm] SIM translation stage pos	-184.032523	-184.025251236478			
[mm] SIM translation stage offset	-6.1	-6.107271346529842			
[s] Observation start time (MET)	113363835.184000	113362693.13789			
Observation start date	2001-08-05T01:56:11	2001-08-05T01:38:13			
[s] Observation end time (MET)	113391835.184000	113392812.76408			
Observation end date	2001-08-05T09:42:51	2001-08-05T10:00:12			
Read mode	CONTINUOUS	CONTINUOUS			

2.3 Aspect



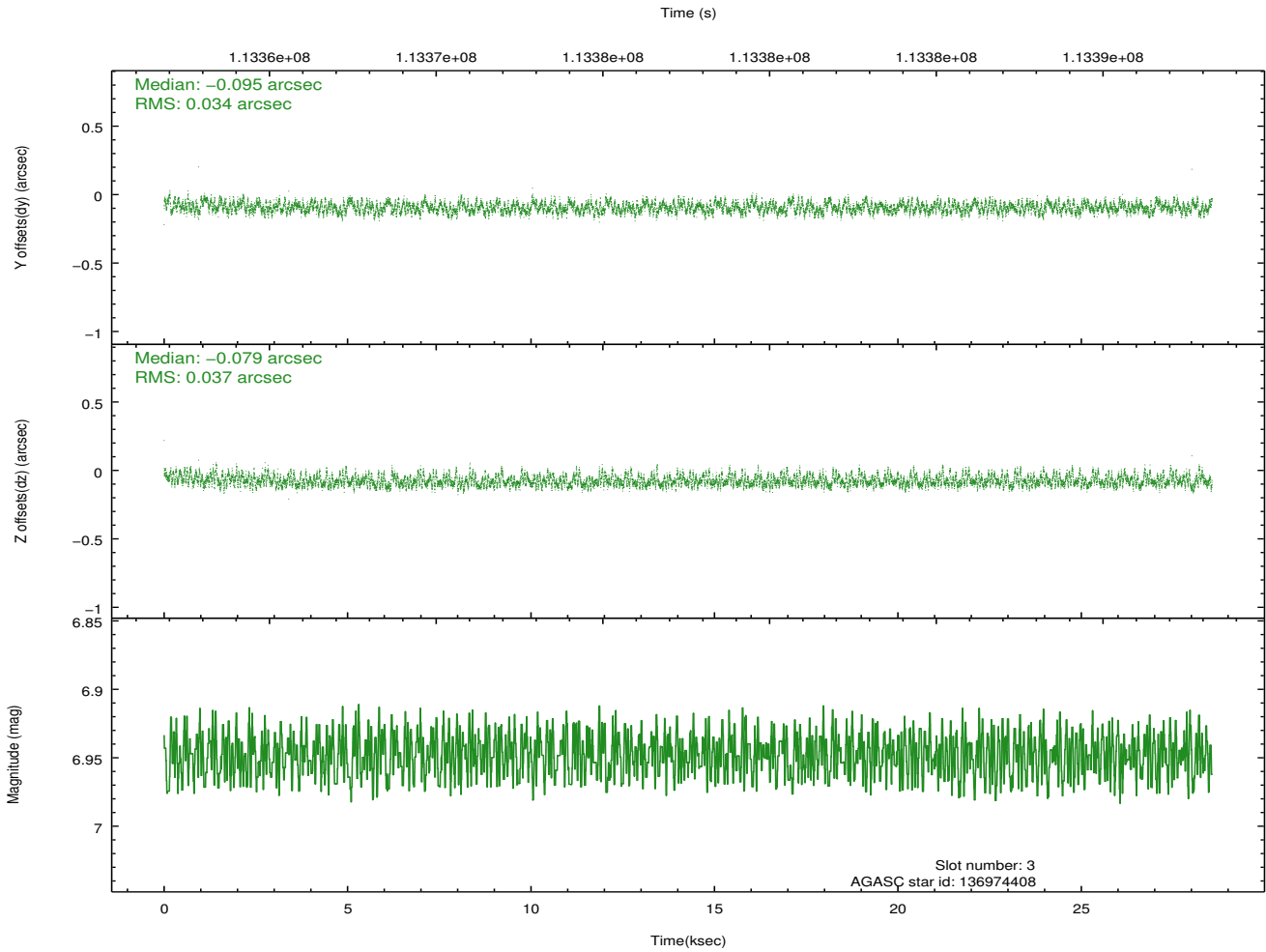
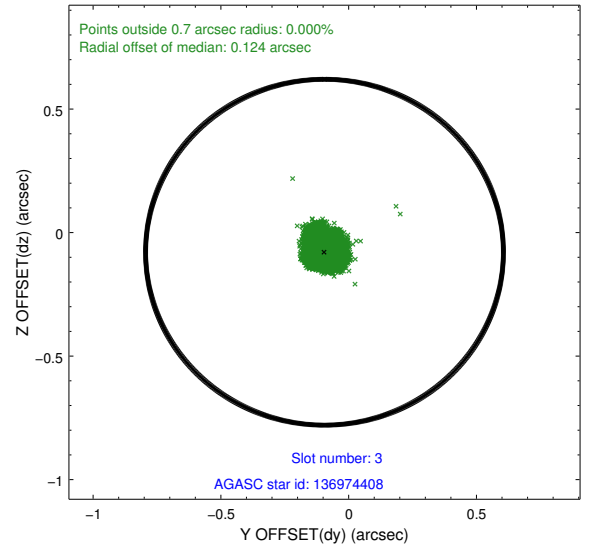
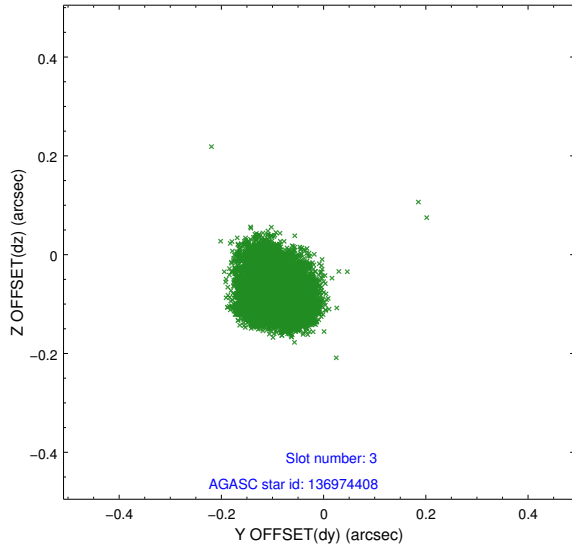


Slot Statistics

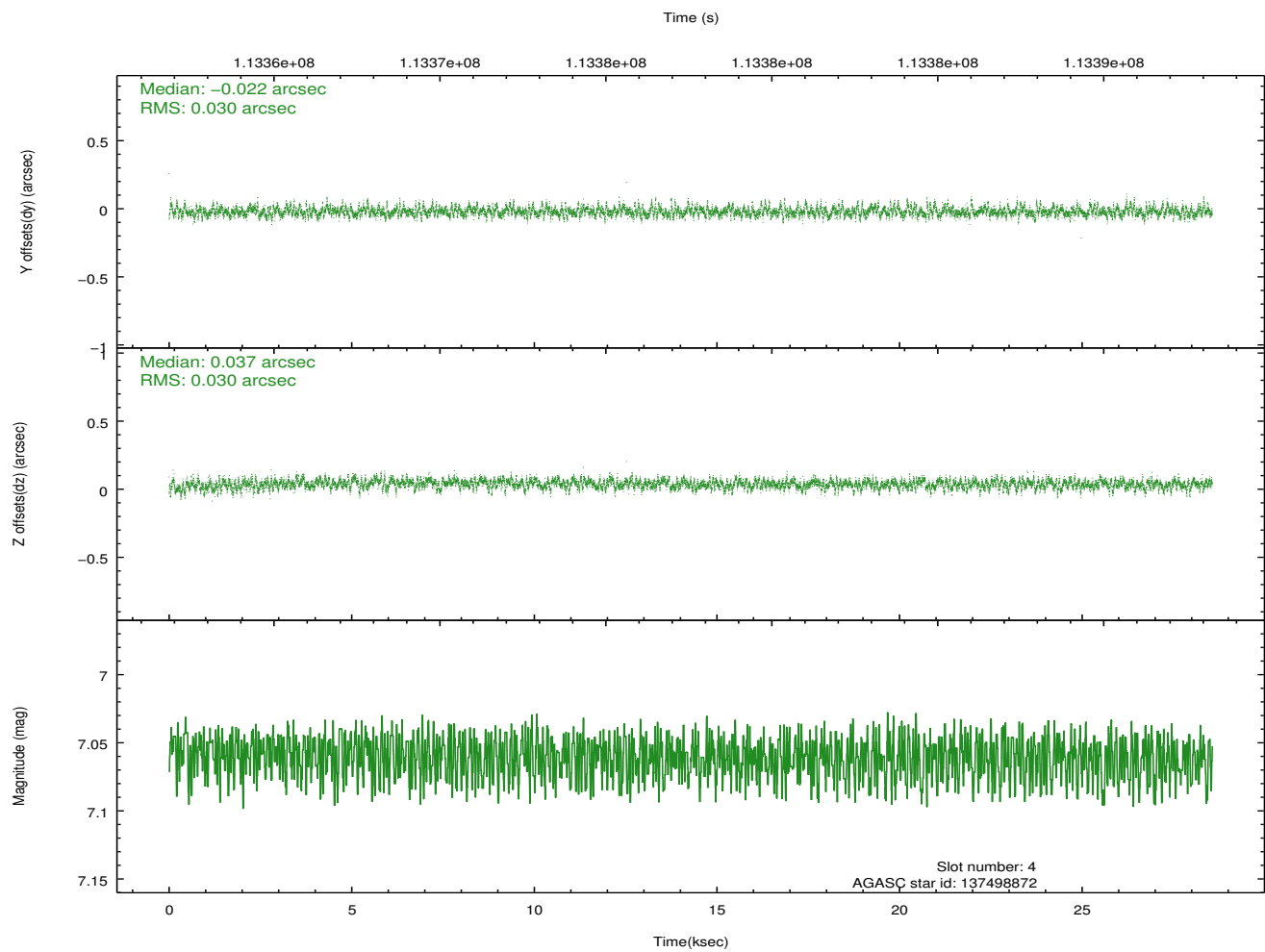
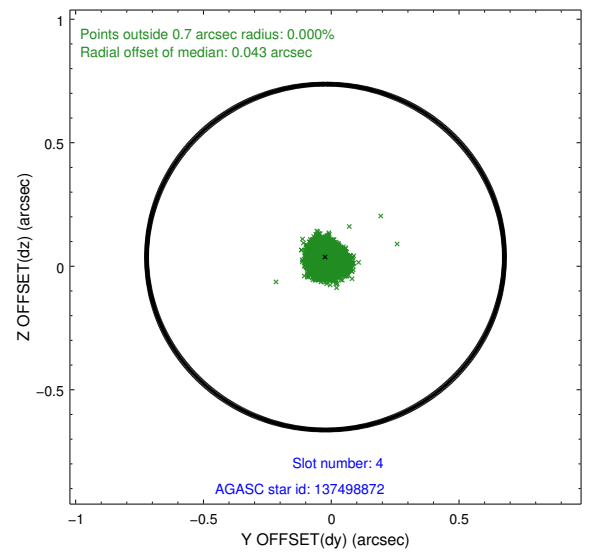
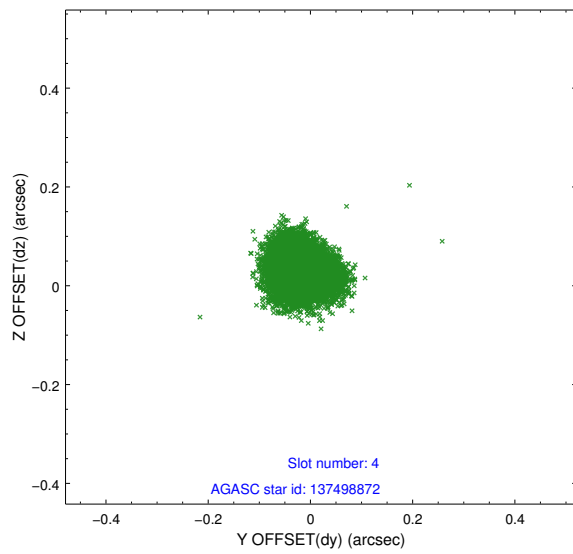
slot	status	id	mag	n_pts	med_dy	med_dz	dr1	dr2	ra	dec	mean_y	mean_z
0	FID	ACIS-S-2	7.08	6967	-0.030	-0.091	0.011	0.022	0.000000	0.000000	-755.30	-1853.16
1	FID	ACIS-S-4	7.19	6967	-0.041	0.039	0.007	0.018	0.000000	0.000000	2157.94	55.32
2	FID	ACIS-S-5	7.23	6967	0.041	0.061	0.010	0.022	0.000000	0.000000	-1807.95	49.14
3	GUIDE	136974408	6.95	13933	-0.095	-0.079	0.054	0.085	288.806802	10.212409	1780.48	1996.55
4	GUIDE	137498872	7.06	13932	-0.022	0.037	0.045	0.074	288.350862	11.344926	151.54	-2073.63
5	GUIDE	136974776	7.81	13932	0.072	0.041	0.048	0.078	288.742109	10.409402	1460.39	1323.52
6	GUIDE	137497048	7.97	13931	0.018	-0.026	0.058	0.092	288.896055	11.554718	-1765.36	-1301.03
7	GUIDE	137102976	8.52	13929	0.022	0.026	0.066	0.107	289.193436	10.979652	-1109.79	925.21

2.4 Star Slots

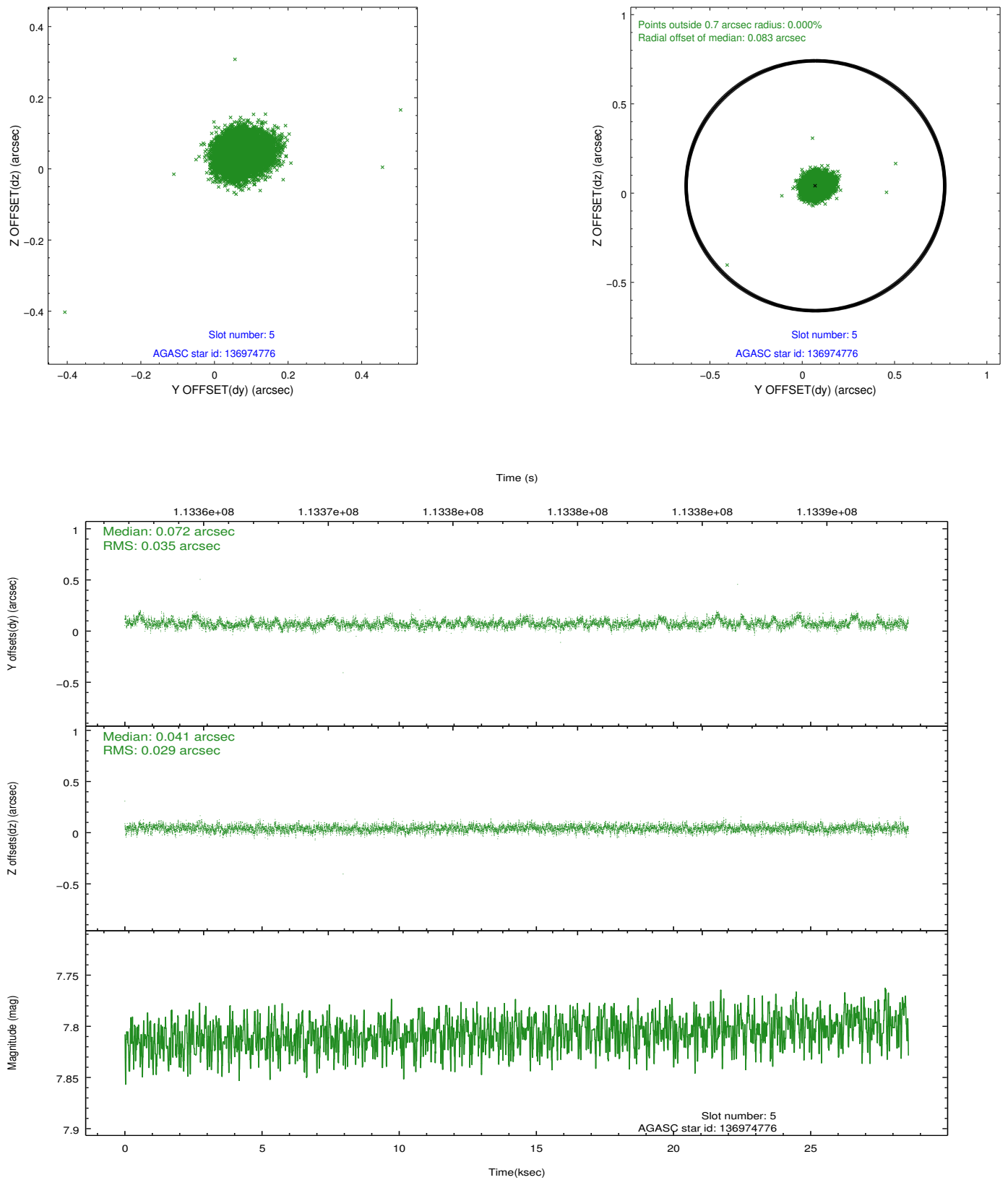
2.4.1 Slot 3



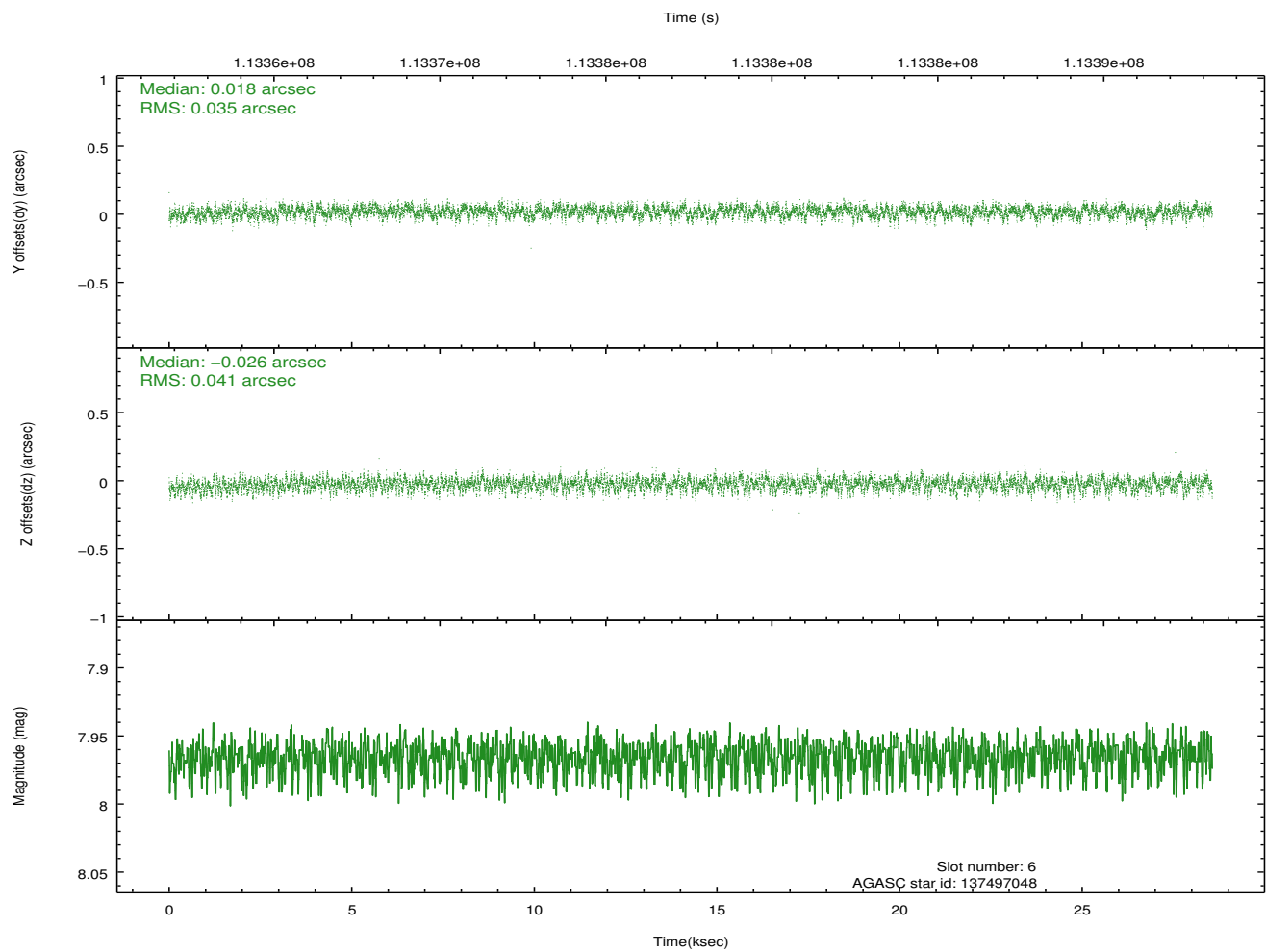
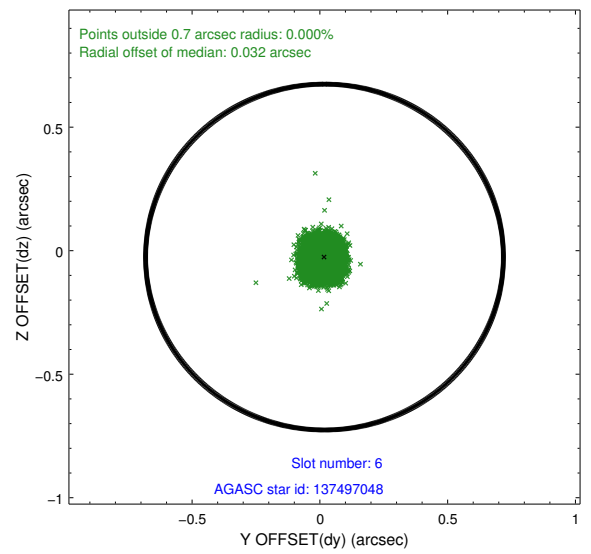
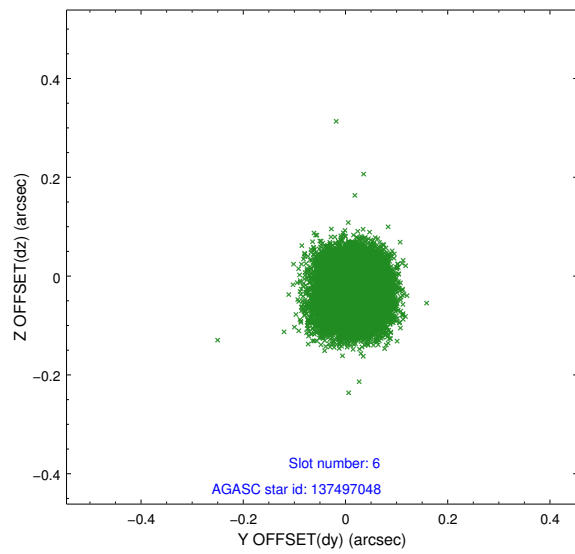
2.4.2 Slot 4



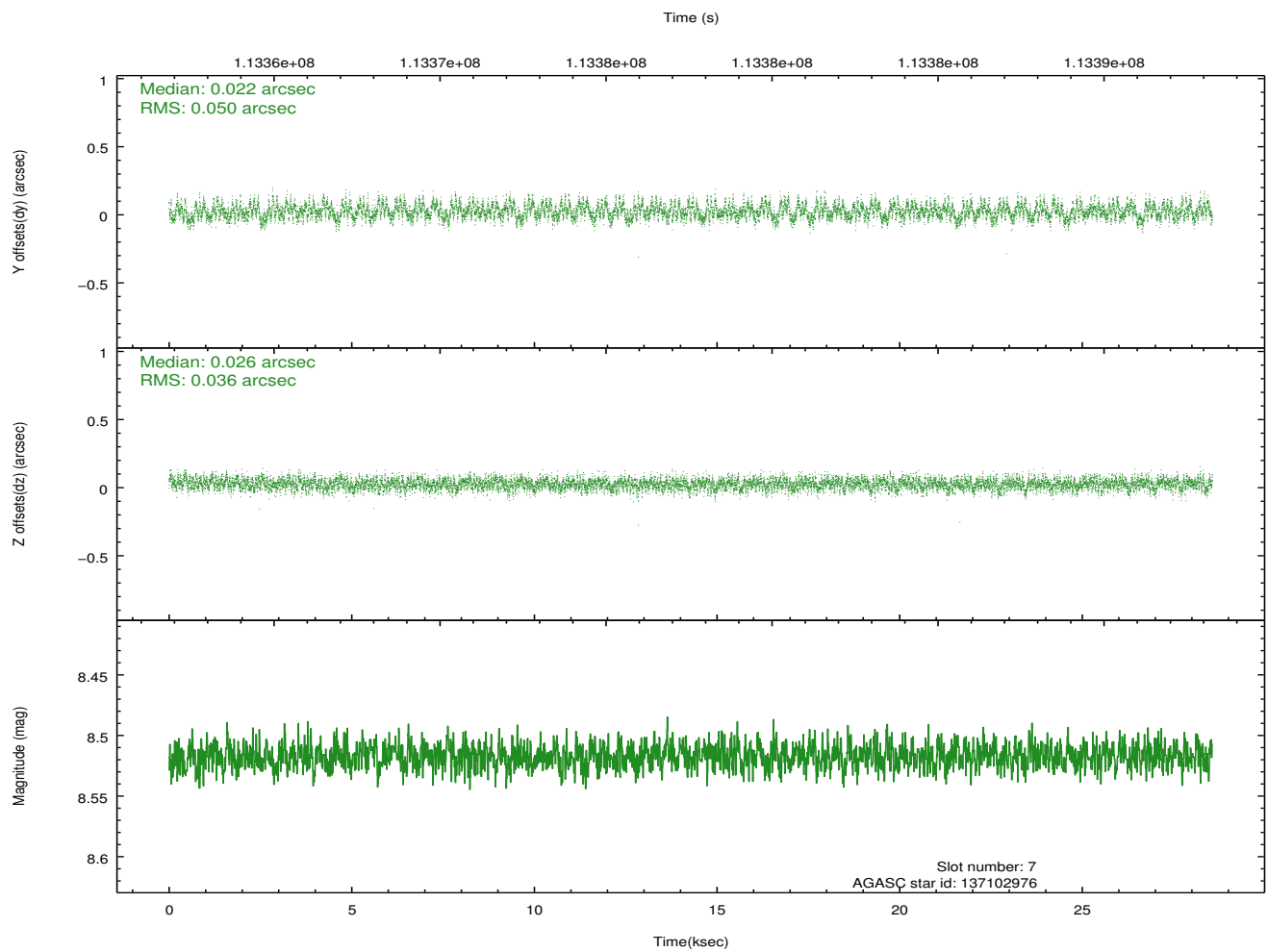
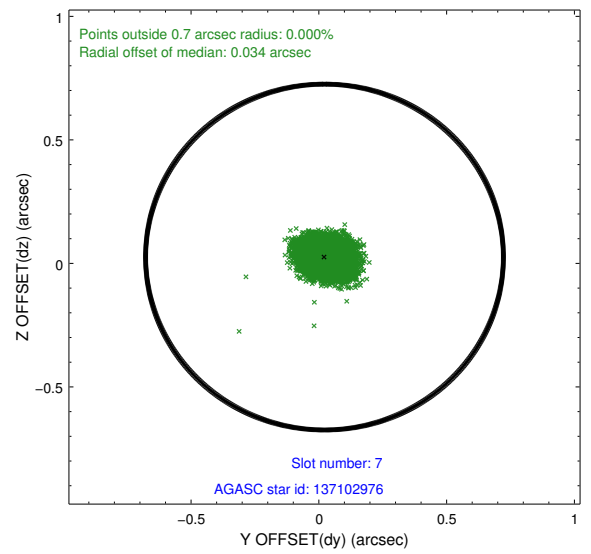
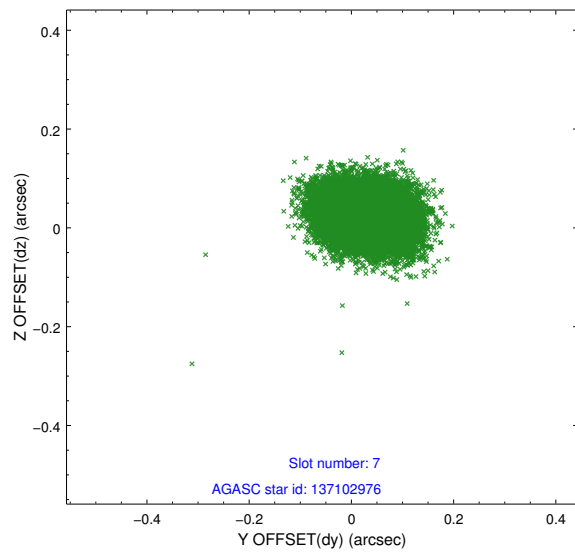
2.4.3 Slot 5



2.4.4 Slot 6

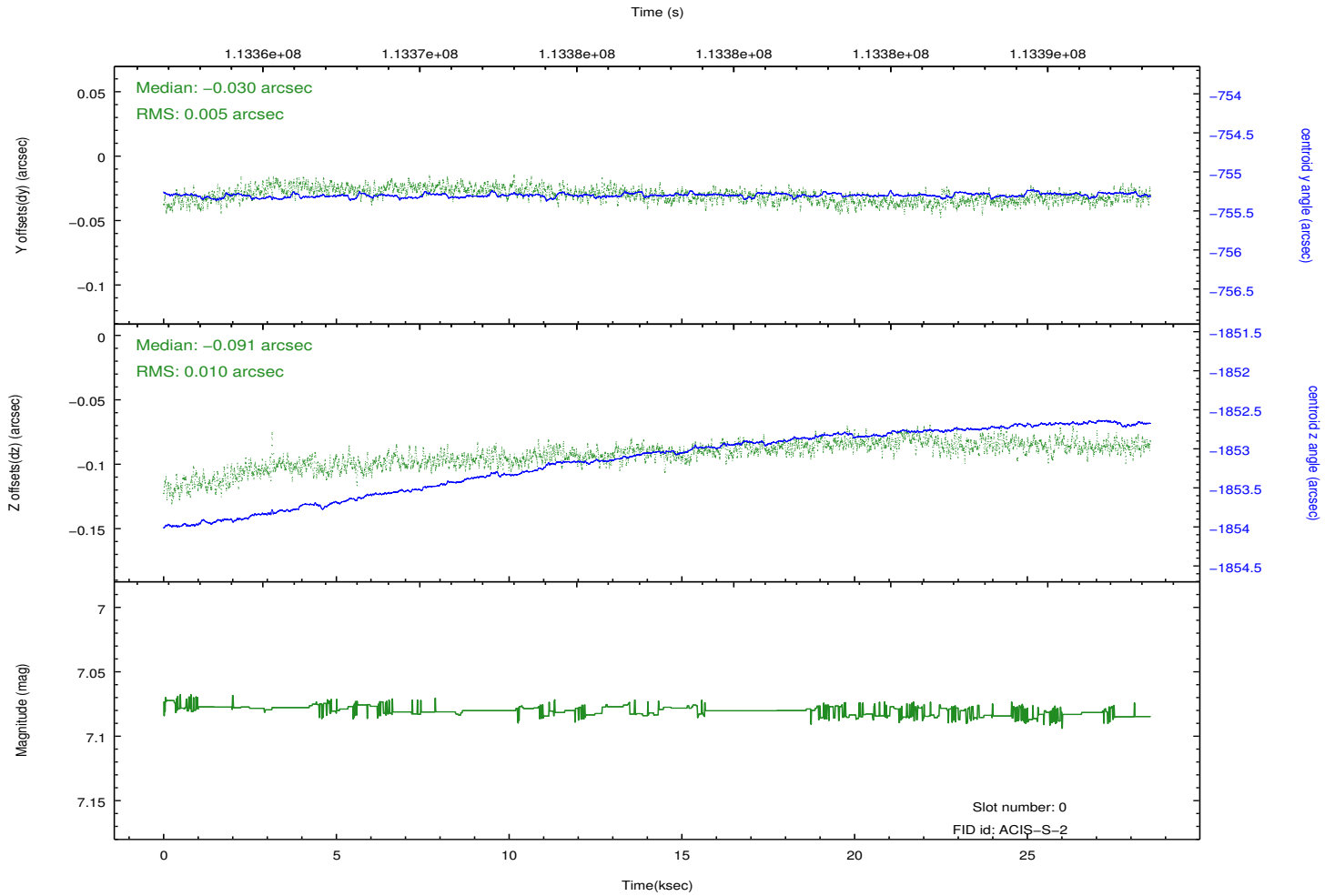
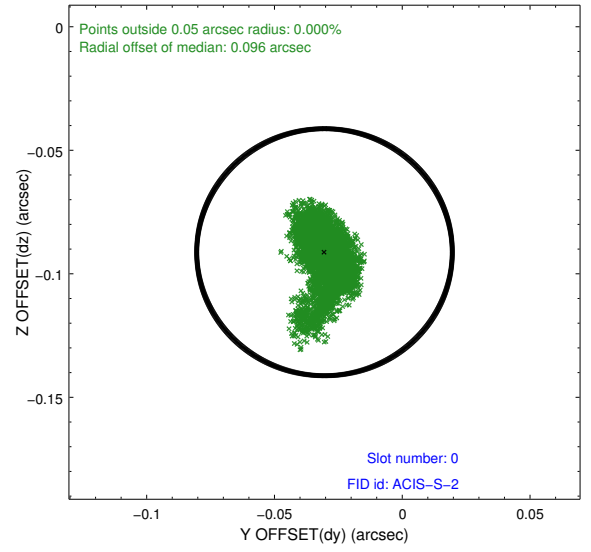
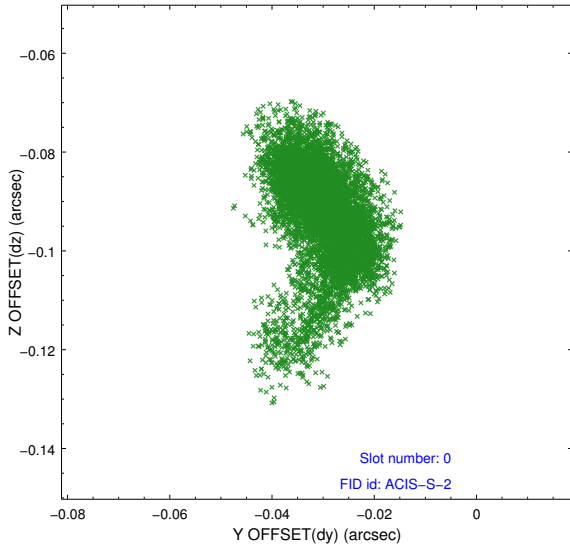


2.4.5 Slot 7

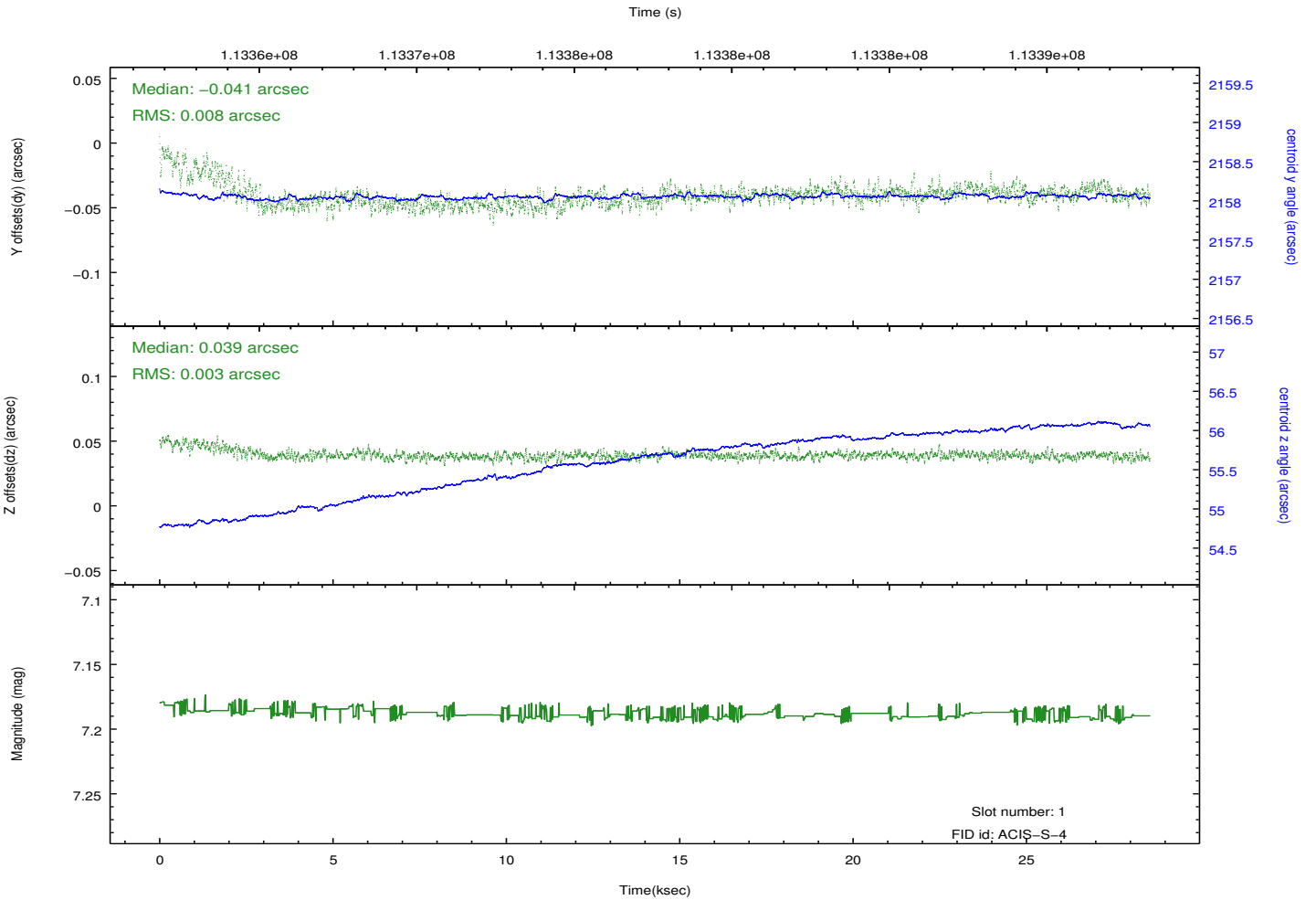
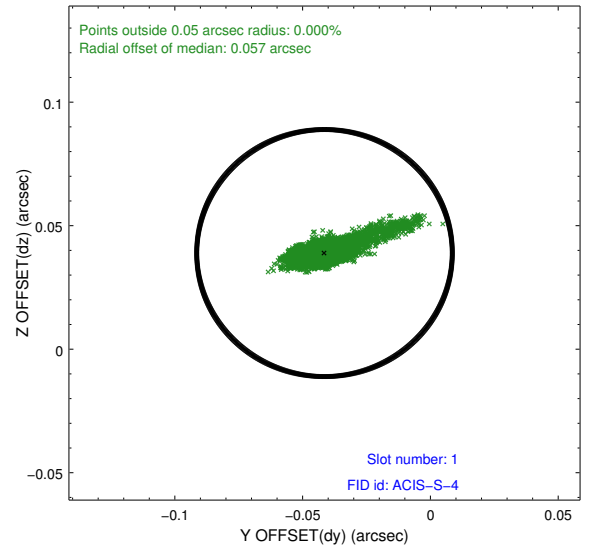
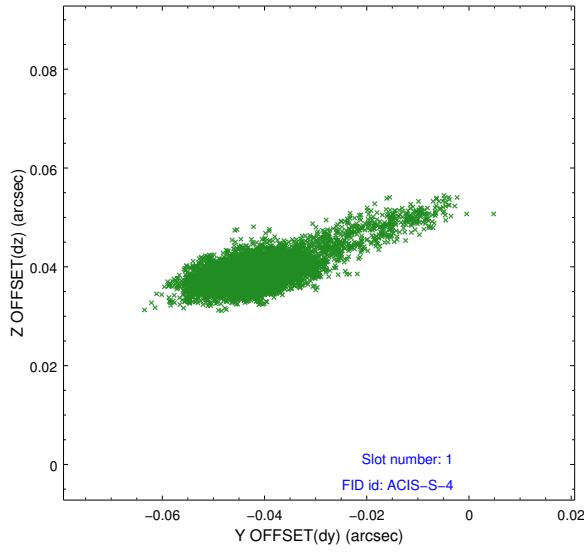


2.5 FID Slots

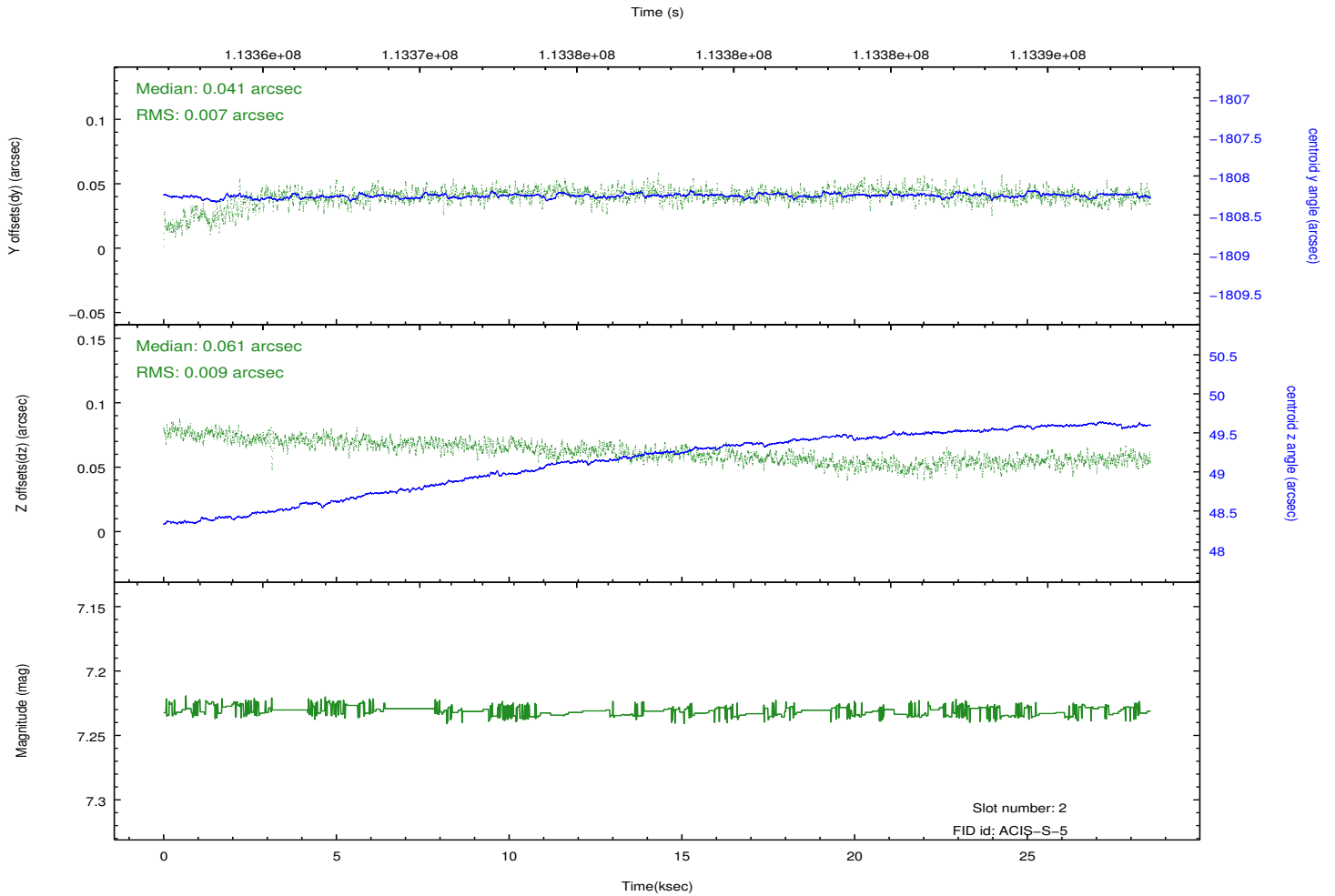
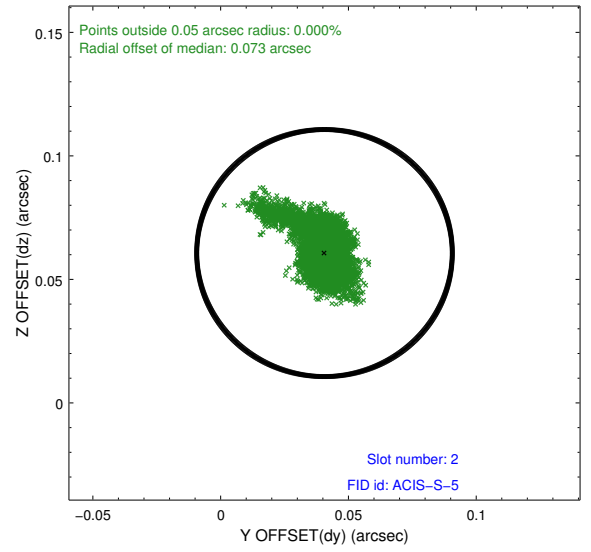
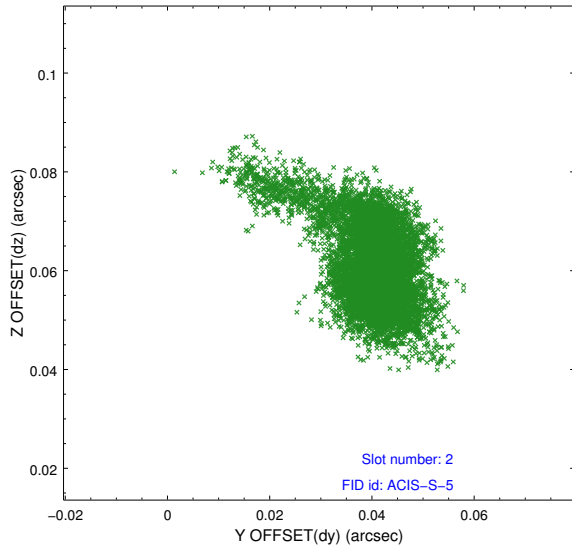
2.5.1 Slot 0



2.5.2 Slot 1

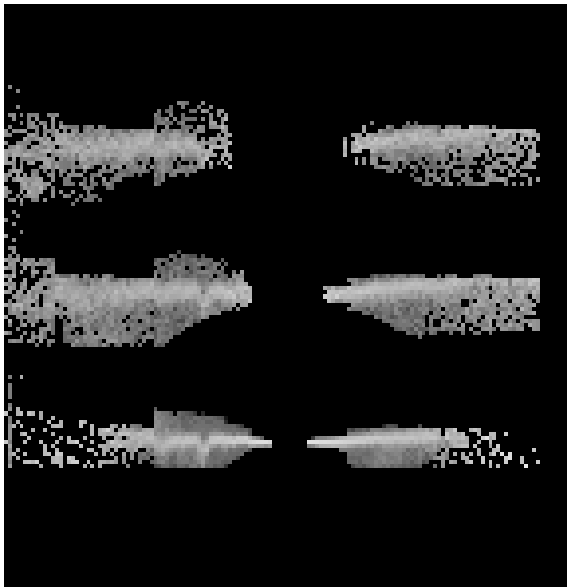


2.5.3 Slot 2



3 Gratings

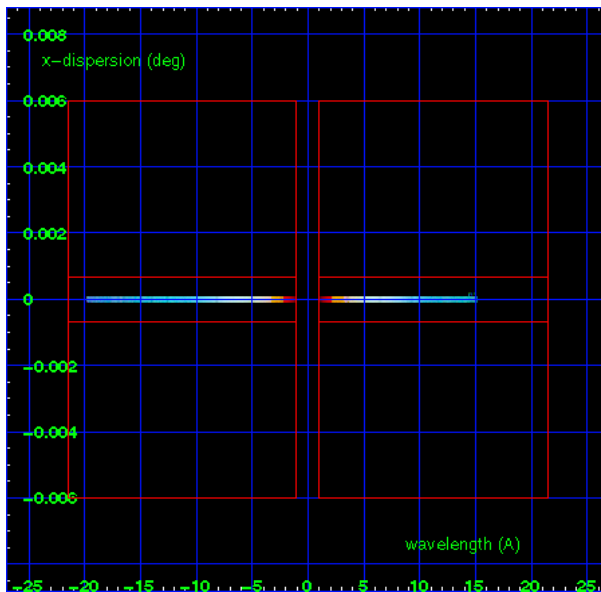
3.1 HEG Arm



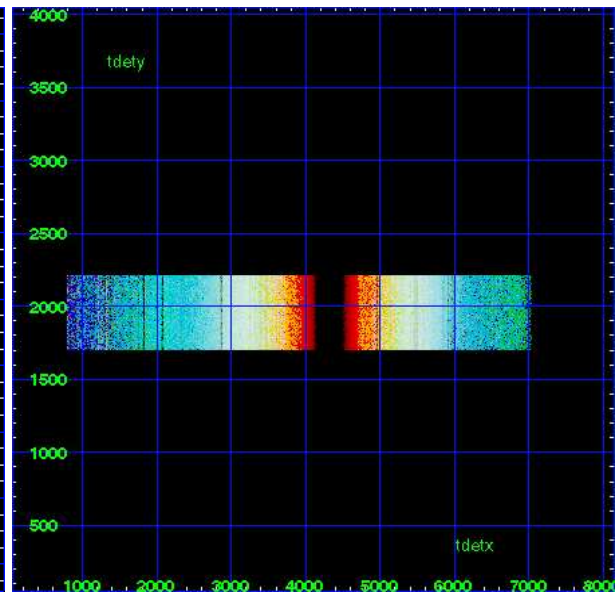
HEG Order Sort 123



HEG Order Sort ALL

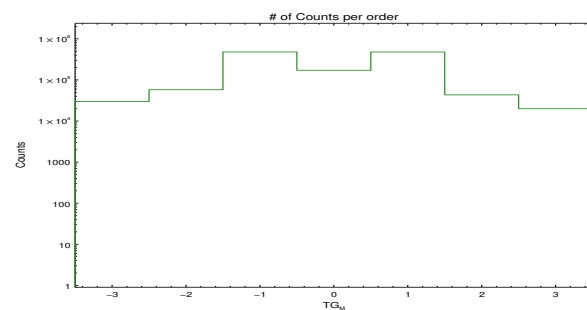


Spot Image HEG

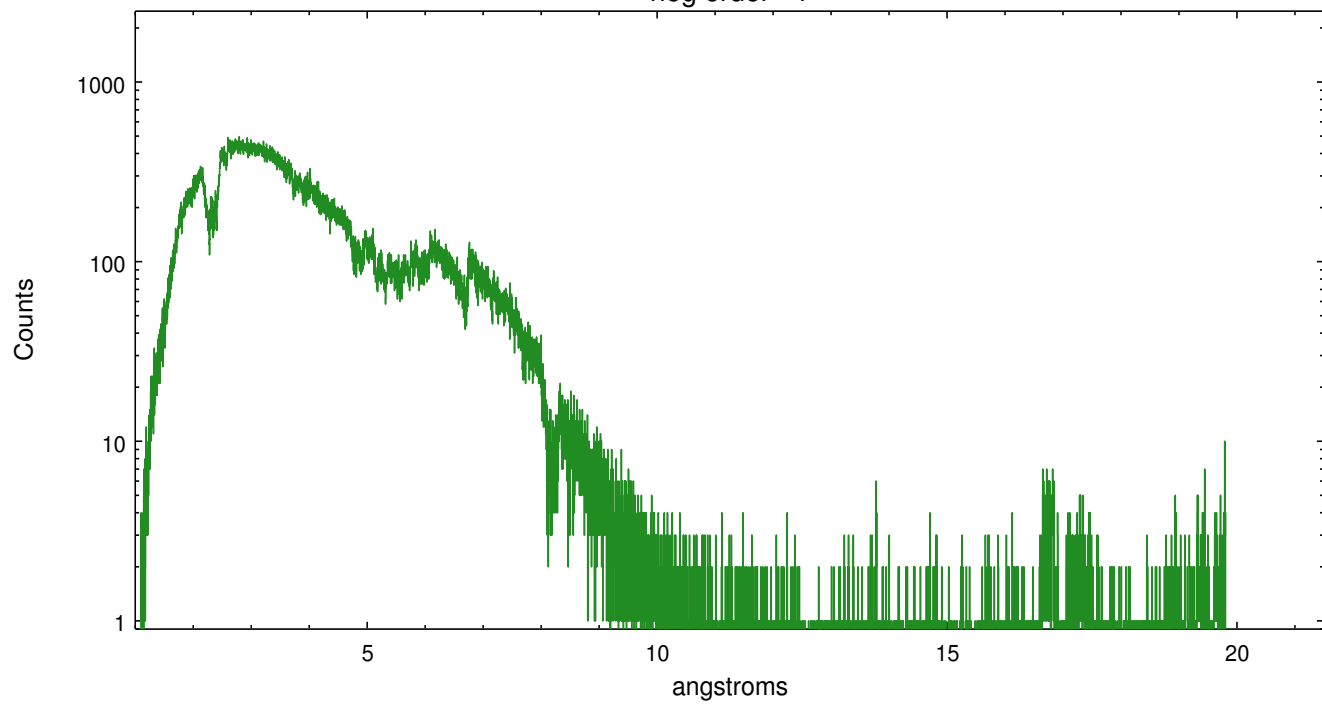


Full Detector HEG

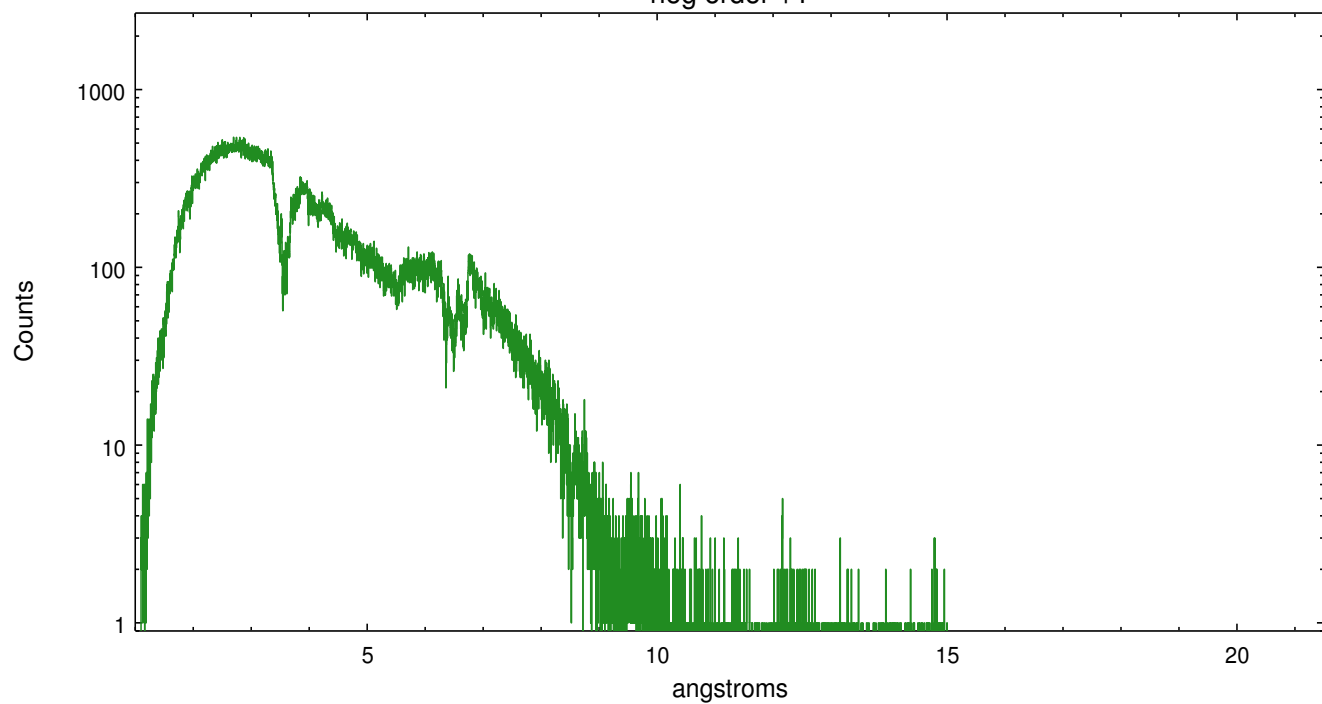
	order -3	order -2	order -1	order 0	order 1	order 2	order 3
Events	29676	57628	478879	171908	477965	43242	19938



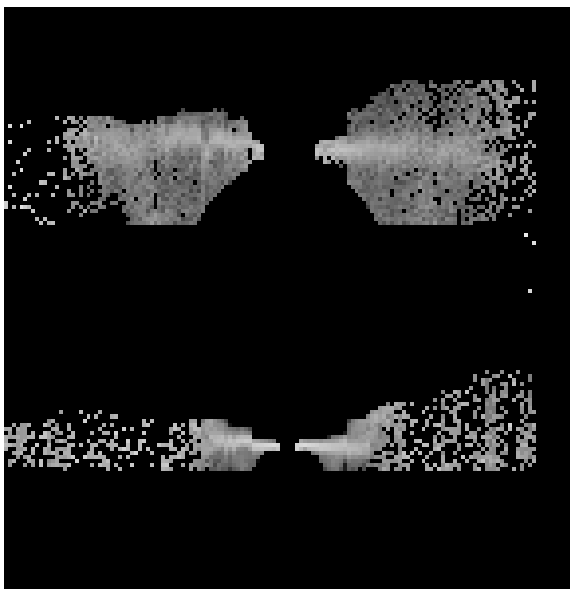
heg order -1



heg order +1



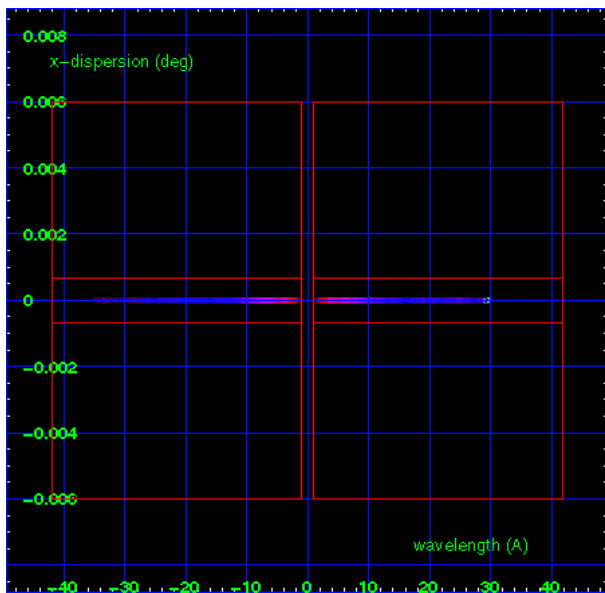
3.2 MEG Arm



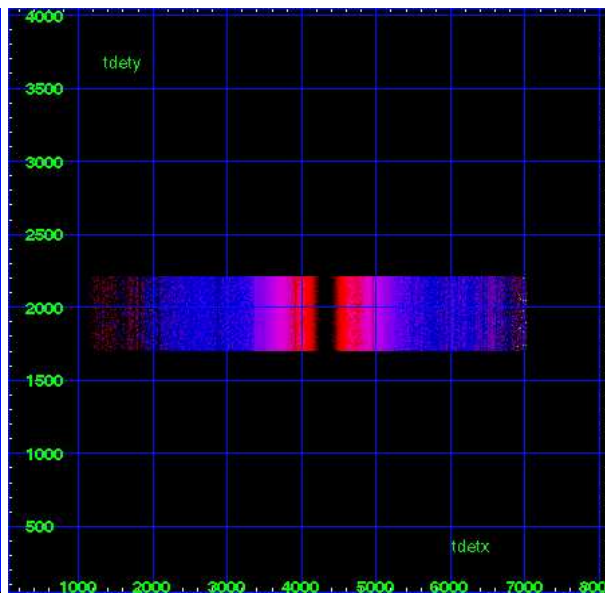
MEG Order Sort 123



MEG Order Sort ALL

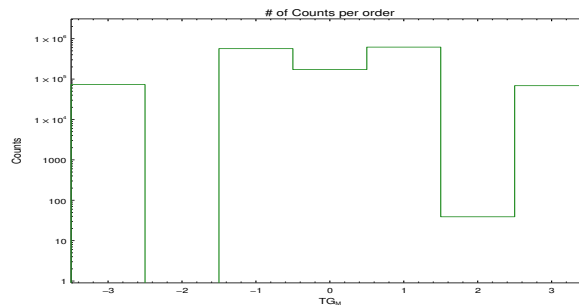


Spot Image MEG

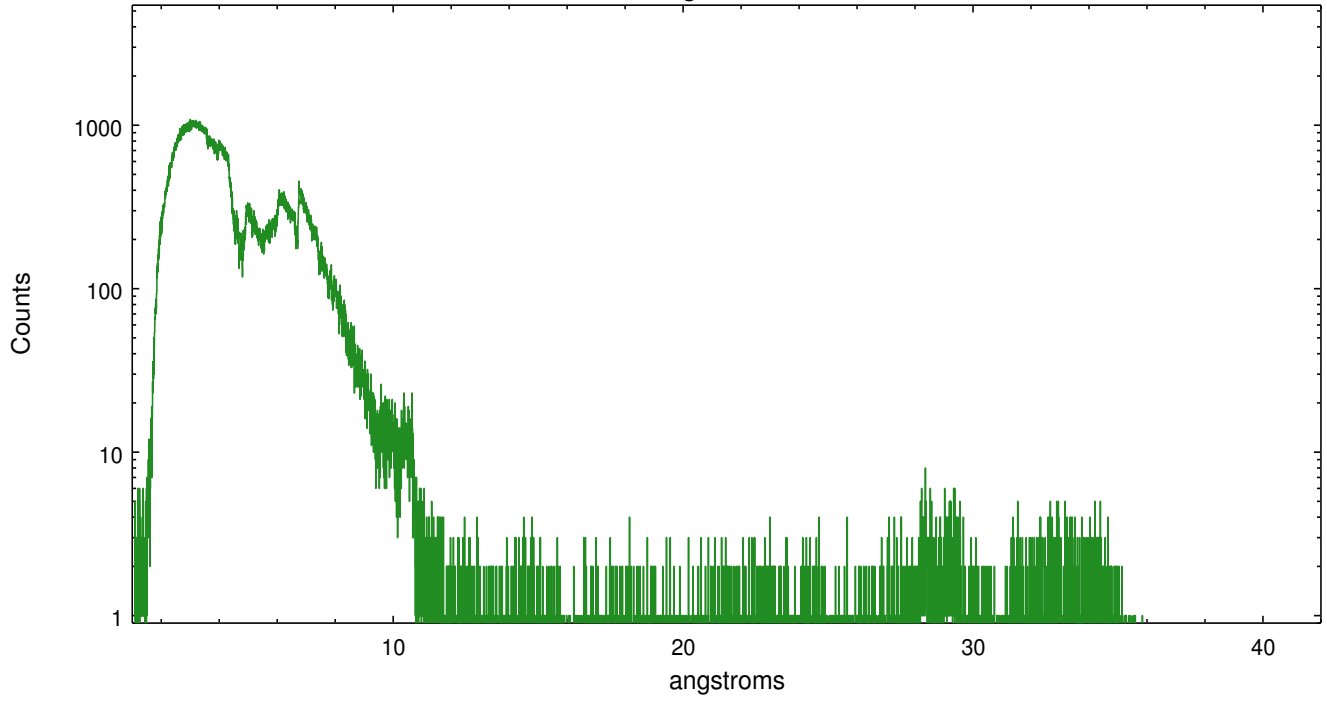


Full Detector MEG

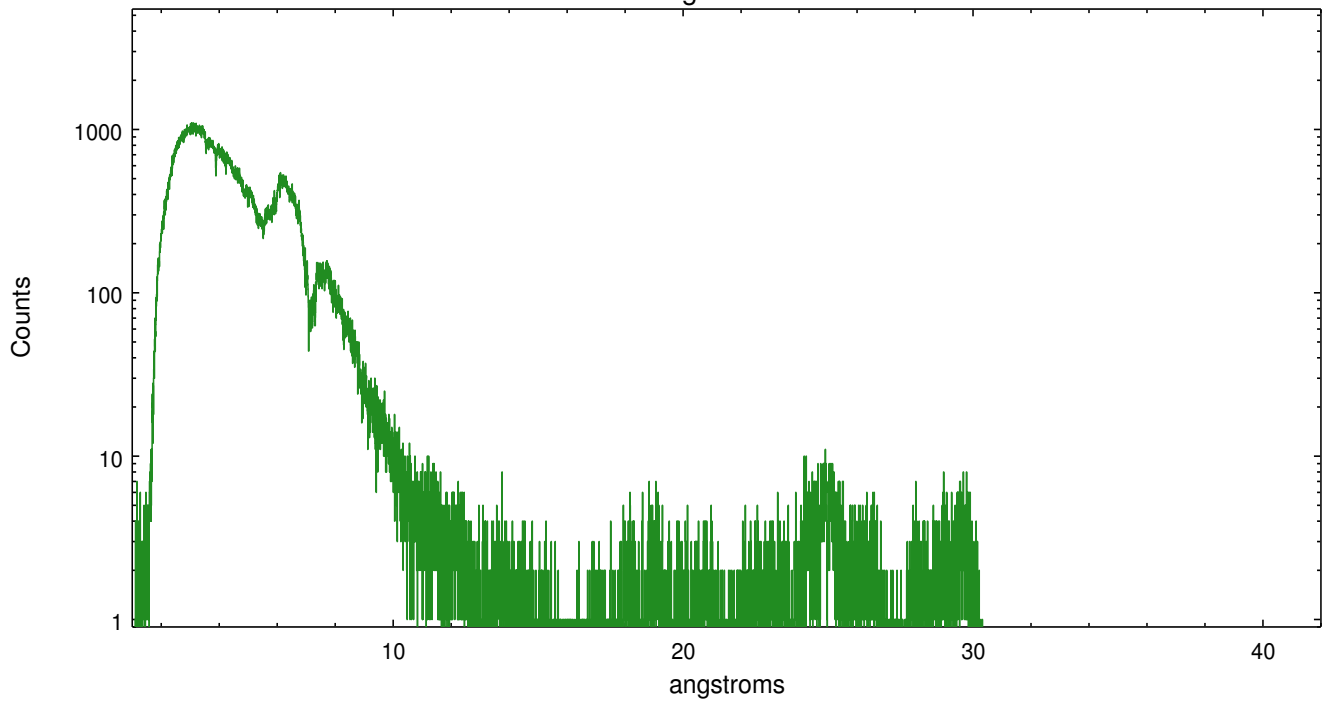
	order -3	order -2	order -1	order 0	order 1	order 2	order 3
Events	73119	0	567410	171908	618390	39	68711



meg order -1



meg order +1



A Summary

A.1 Status

V&V Scientist	David Huenemoerder
V&V Date (YYYY-MM-DD)	2012.10.03
V&V Edition	1
V&V Disposition and Status	OK
V&V Charge Time	28.557

A.2 Comments