

V&V Reference Report

L2 ASCDS Version : 8.4.5

Observation 2056 - L2 Version 3
Chandra X-Ray Center

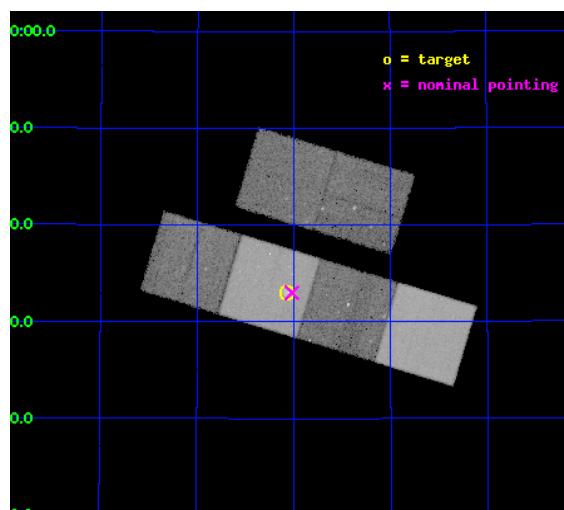
L2 Processing Date : Sep 26 2012

Contents

1	Front	2
2	OBI	3
2.1	OBI	3
2.1.1	Images	3
2.1.2	Bias	3
2.1.3	Parameters	4
2.1.4	Events	4
2.2	Compared Parameters	5
2.3	Aspect	6
2.4	Star Slots	9
2.4.1	Slot 3	9
2.4.2	Slot 4	10
2.4.3	Slot 5	11
2.4.4	Slot 6	12
2.4.5	Slot 7	13
2.5	FID Slots	14
2.5.1	Slot 0	14
2.5.2	Slot 1	15
2.5.3	Slot 2	16
A	Summary	17
A.1	Status	17
A.2	Comments	17

1 Front

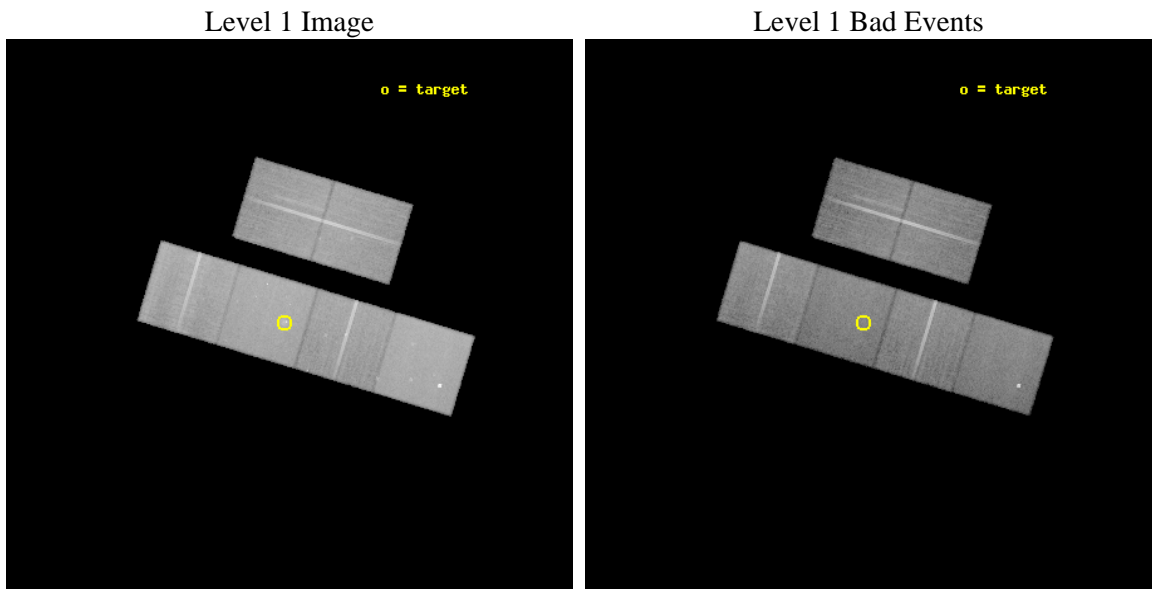
seq_num	600190	Sequence number
obs_id	2056	Observation id
title	THE X-RAY POINT SOURCE POPULATION IN SPIRAL GALAXIES	Proposal titl
observer	Dr Andrea Prestwich	Principal investigator
object	NGC 278	Source name
dtcycle	0	
cycle	P	events from which exps? Prim/Second/Both
ra_targ	13.019167	Observer's specified target RA [deg]
dec_targ	47.551111	Observer's specified target Dec [deg]
ra_nom	13.004847664382	Nominal RA [deg]
dec_nom	47.550001041463	Nominal Dec [deg]
roll_nom	196.75871016903	Nominal Roll [deg]
revision	3	Processing version of data
ontime	37743.918074712	Sum of GTIs [s]
livetime	37265.981857391	Livetime [s]
ontime2	37747.158995122	Sum of GTIs [s]
ontime3	37740.677024722	Sum of GTIs [s]
ontime5	37743.918074712	Sum of GTIs [s]
ontime6	37747.158995122	Sum of GTIs [s]
ontime7	37743.918074712	Sum of GTIs [s]
ontime8	37743.918154463	Sum of GTIs [s]
l2events	385797	Number of level 2 events



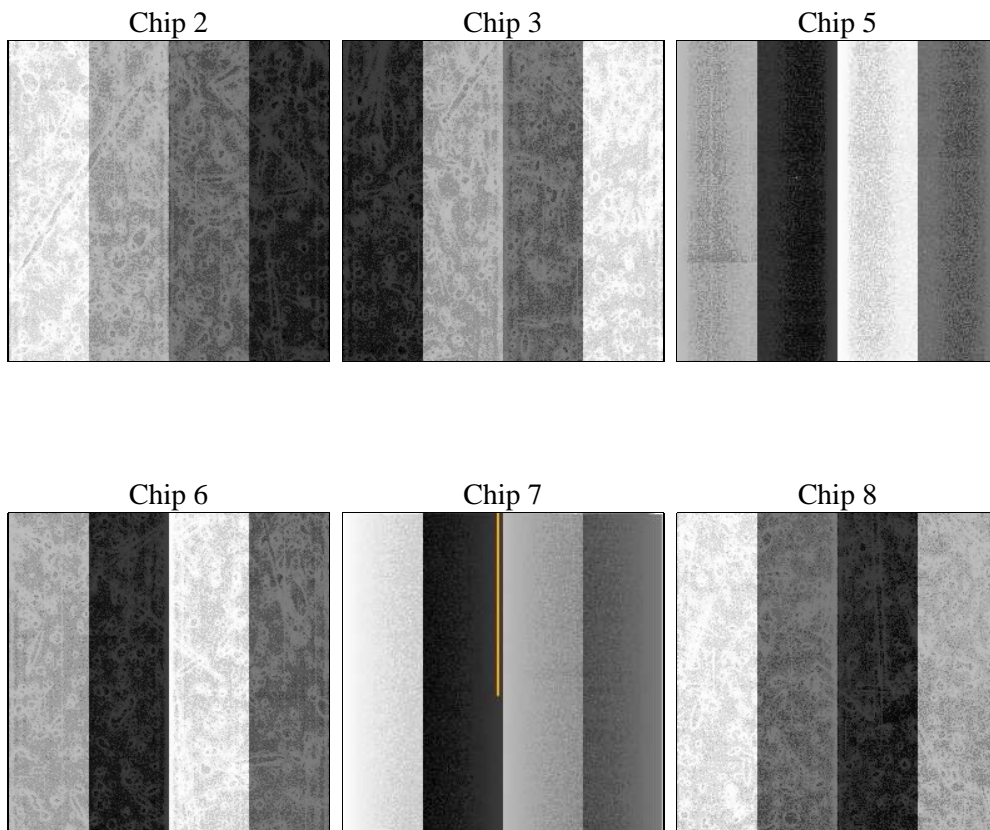
2 OBI

2.1 OBI

2.1.1 Images



2.1.2 Bias



2.1.3 Parameters

obi_num	3	Obi number	sched_exp_time	38000.000000	[s] Scheduled observation exposure time
ascdsver	8.4.5	Processing system revision	ontime	37743.918074712	Sum of GTIs [s]
caldbver	4.5.1.1	 	ontime2	37747.158995122	Sum of GTIs [s]
date	2012-09-26T00:52:37	Date and time of file creation	ontime3	37740.677024722	Sum of GTIs [s]
revision	3	Processing version of data	ontime5	37743.918074712	Sum of GTIs [s]
			ontime6	37747.158995122	Sum of GTIs [s]
			ontime7	37743.918074712	Sum of GTIs [s]
			ontime8	37743.918154463	Sum of GTIs [s]
			l1events	1717365	Number of level 1 events

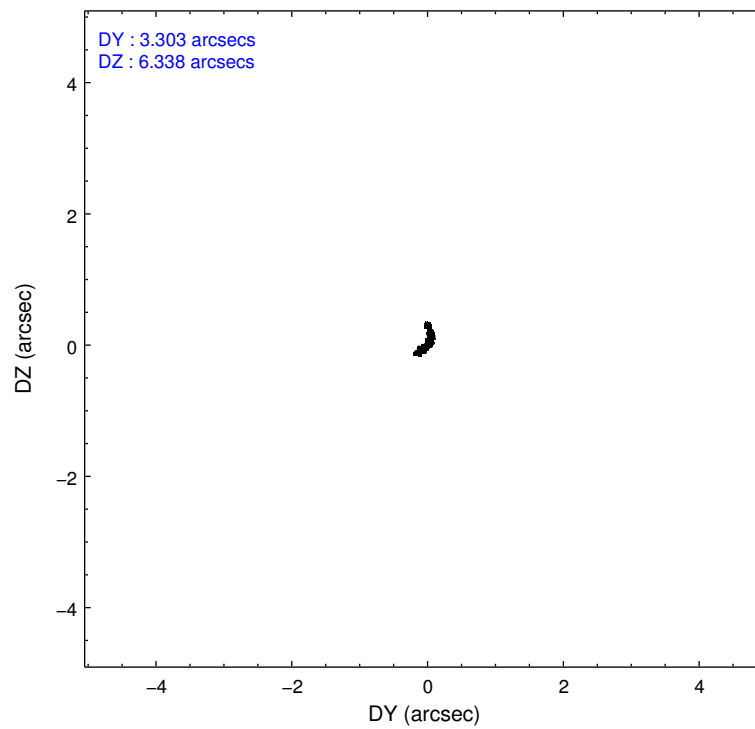
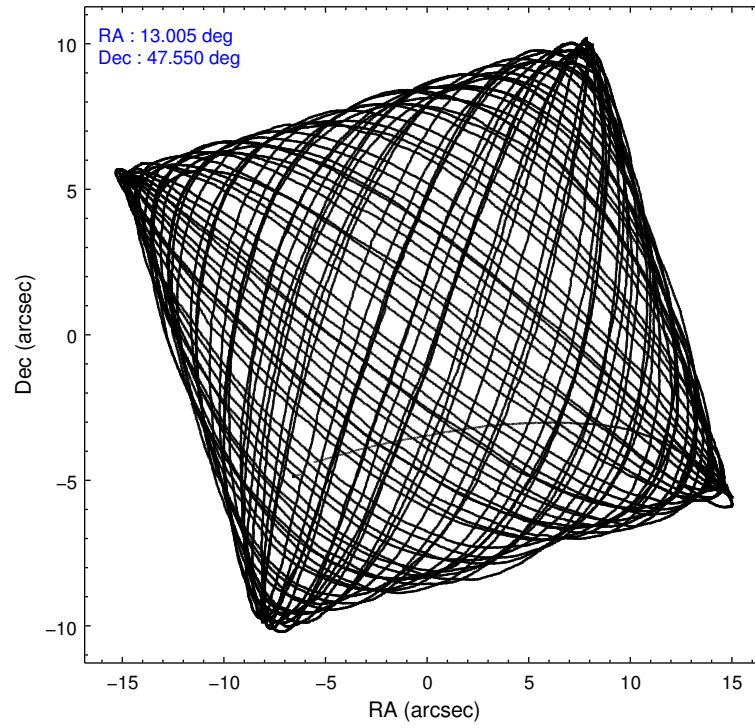
2.1.4 Events

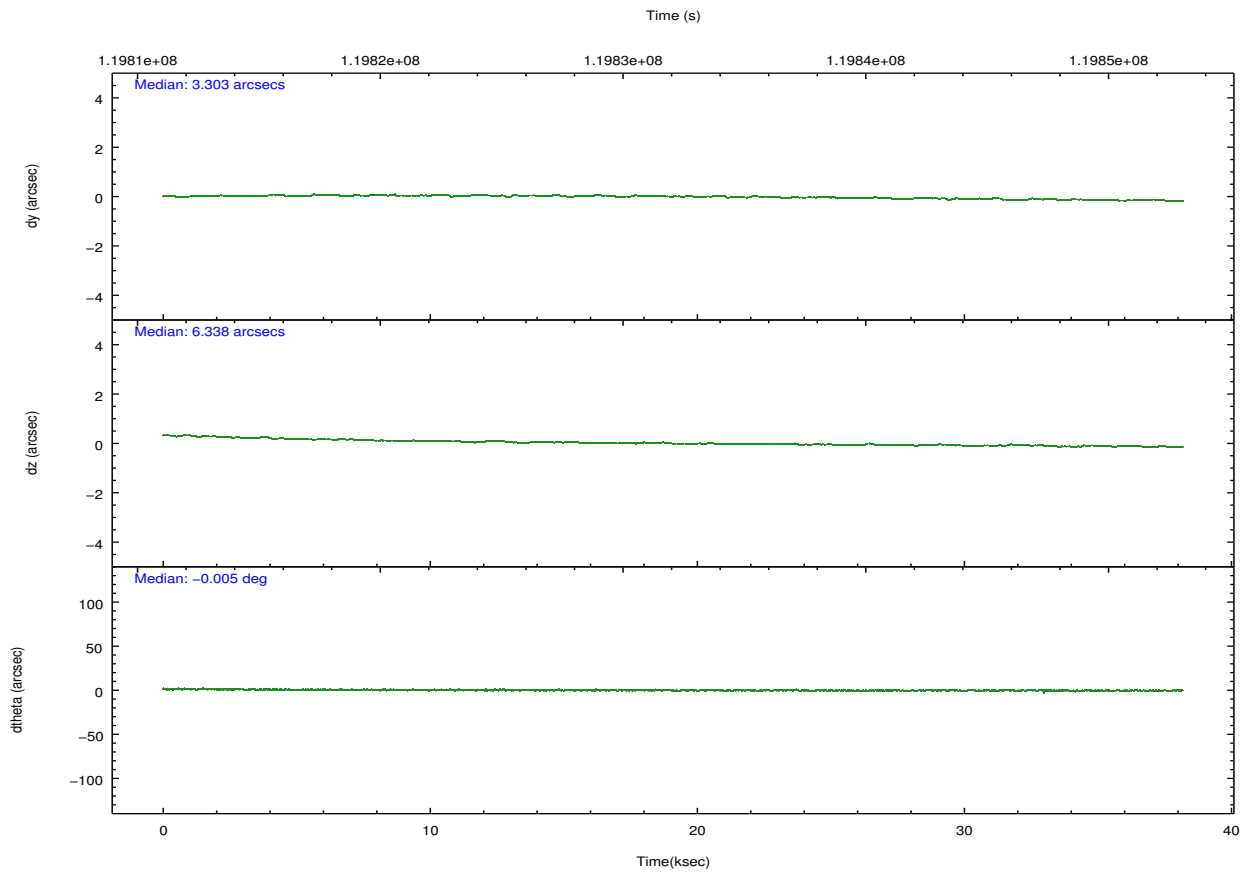
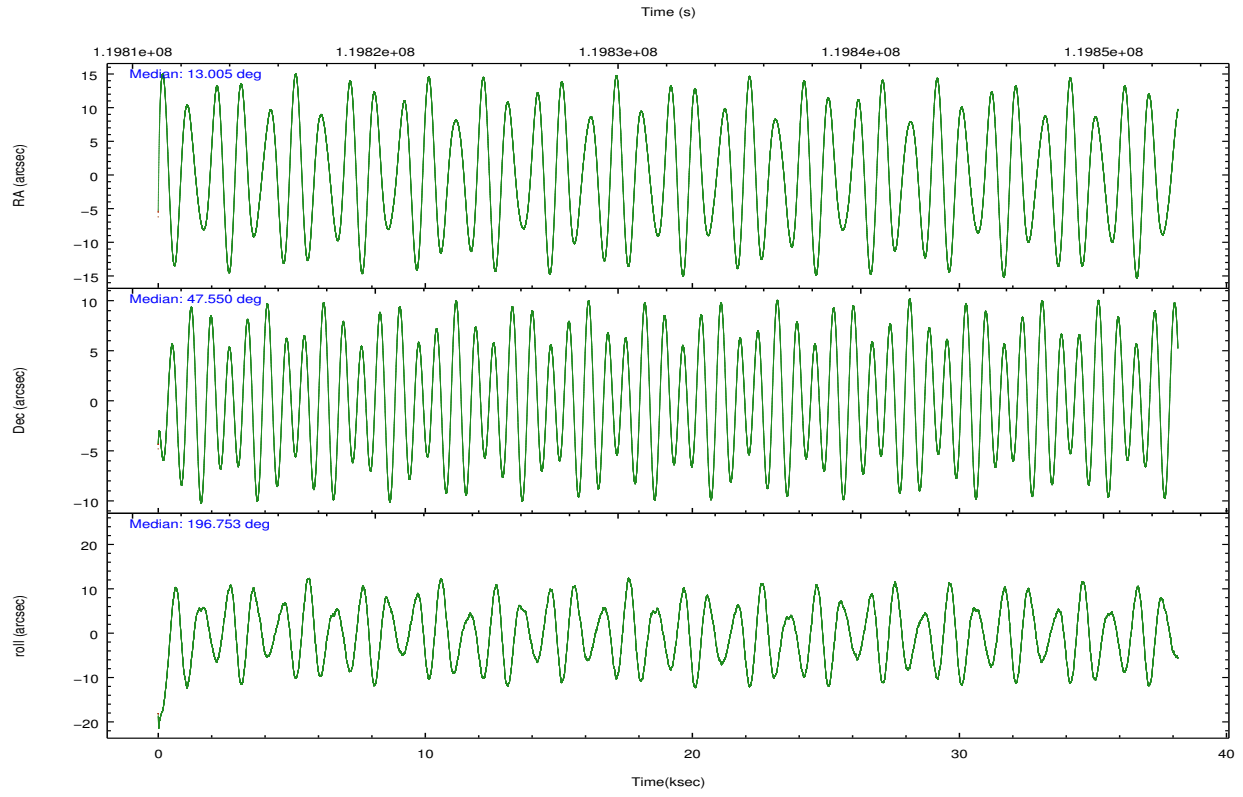
	ccd 2	ccd 3	ccd 5	ccd 6	ccd 7	ccd 8		ccd 2	ccd 3	ccd 5	ccd 6	ccd 7	ccd 8
level 1 events	257650	240562	339668	250304	313524	315657	grade 0 events	12163	12314	12356	13673	14037	21766
rejected events	227810	211137	186295	217824	179489	247707		4%	5%	3%	5%	4%	6%
rejected %	88%	87%	54%	87%	57%	78%	grade 1 events	100	126	426	126	270	191
								0%	0%	0%	0%	0%	0%
							grade 2 events	6397	5901	46399	6178	26935	14105
								2%	2%	13%	2%	8%	4%
							grade 3 events	2779	2751	7660	3027	12210	7566
								1%	1%	2%	1%	3%	2%
							grade 4 events	2760	2737	6119	3088	12163	7042
								1%	1%	1%	1%	3%	2%
							grade 5 events	8385	9060	27594	10307	29398	12937
								3%	3%	8%	4%	9%	4%
							grade 6 events	5747	5727	80867	6520	68708	17554
								2%	2%	23%	2%	21%	5%
							grade 7 events	219319	201946	158247	207385	149803	234496
								85%	83%	46%	82%	47%	74%

2.2 Compared Parameters

Parameter	Planned	Actual	Parameter	Planned	Actual
Instrument	ACIS	ACIS	Obspar format version number	7	7
Detector	ACIS-235678	ACIS-235678	Obspar file type	PREDICTED	ACTUAL
Grating	NONE	NONE	Obspar update status	NONE	UPDATED
Data mode	FAINT	FAINT	Number of optional ACIS chips dropped	0	0
Observation mode	POINTING	POINTING	On-chip summing requested	N	N
[deg] Pointing RA	13.032178	13.00484766438236	Subarray requested	NONE	NONE
[deg] Pointing Dec	47.570070	47.55000104146254	Alternating exposures requested	N	N
[deg] Pointing Roll	196.581922	196.7587101690279	[s] Primary exposure time	0.000000	3.2
[mm] SIM focus pos	-0.684267	-0.6828225247311905			
[mm] SIM defocus	0	0.001444936568705701			
[mm] SIM translation stage pos	-190.132523	-190.1400660498719			
[mm] SIM translation stage offset	0	0.00754346686406393			
[s] Observation start time (MET)	119813151.184000	119812273.73044			
Observation start date	2001-10-18T17:24:47	2001-10-18T17:11:13			
[s] Observation end time (MET)	119851151.184000	119851710.607			
Observation end date	2001-10-19T03:58:07	2001-10-19T04:08:30			
Read mode	TIMED	TIMED			

2.3 Aspect





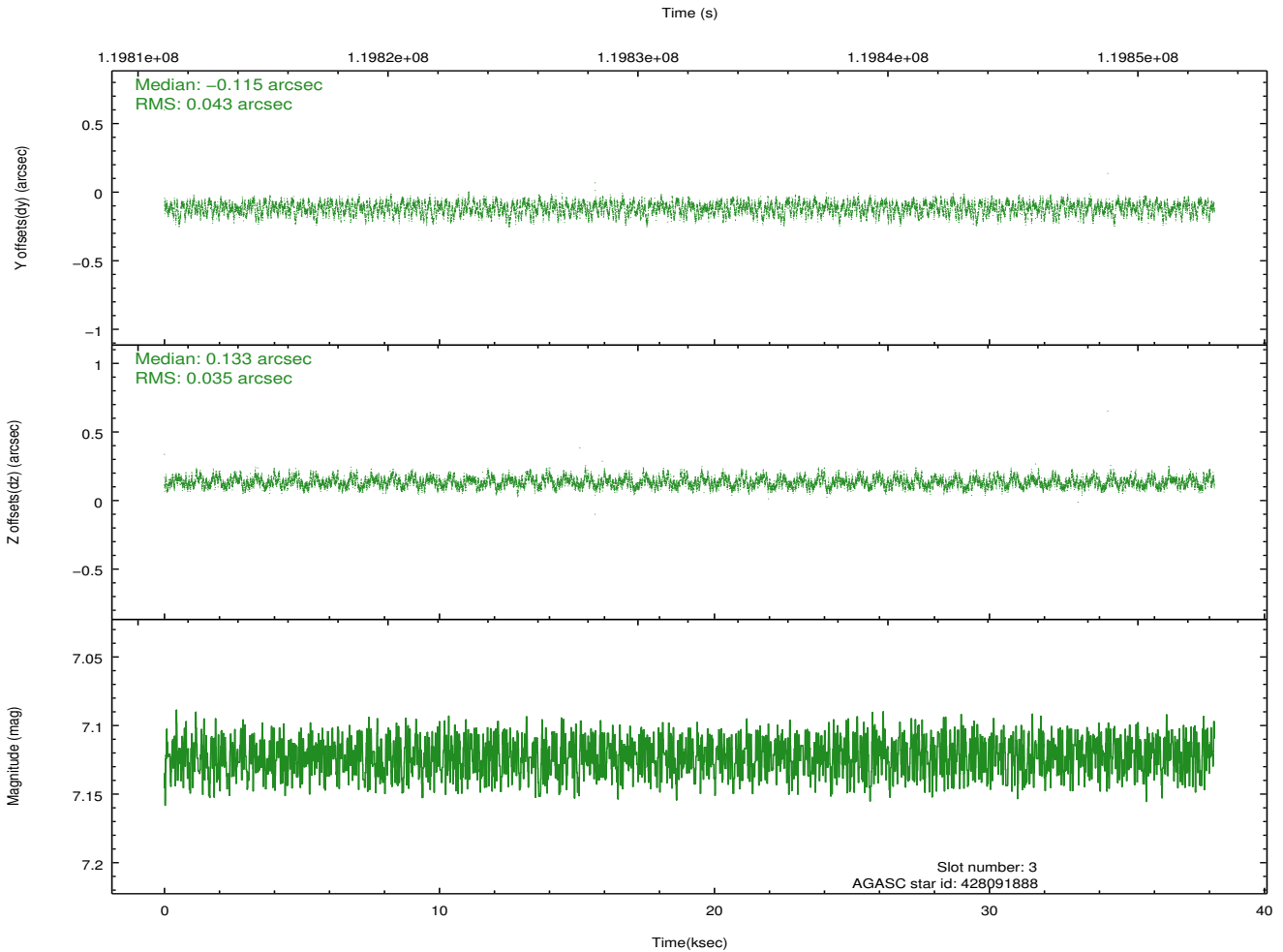
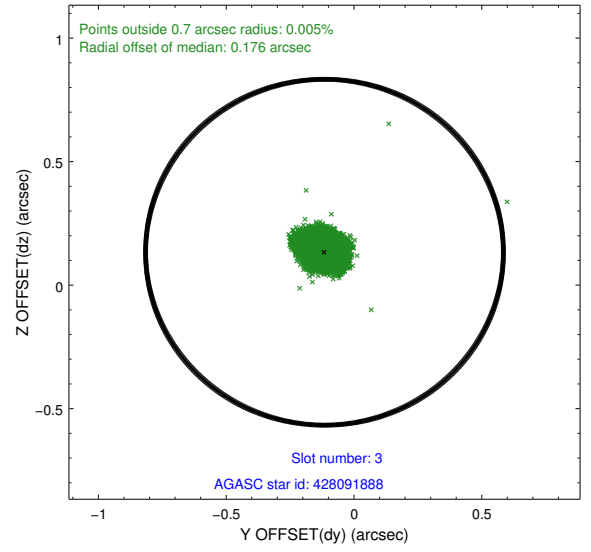
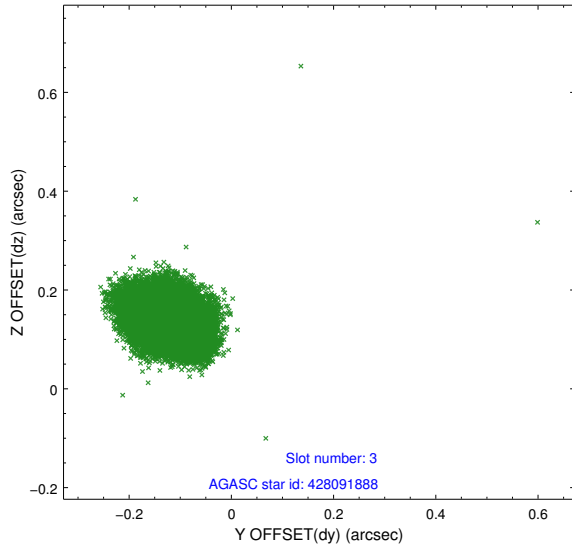
Slot Statistics

slot	status	id	mag	n_pts	med_dy	med_dz	dr1	dr2	ra	dec	mean_y	mean_z
0	FID	ACIS-S-2	7.11	9312	-0.021	0.009	0.008	0.012	0.000000	0.000000	-755.92	-1727.52
1	FID	ACIS-S-4	7.20	9312	-0.014	0.008	0.006	0.011	0.000000	0.000000	2157.32	180.99
2	FID	ACIS-S-5	7.24	9312	0.004	-0.008	0.008	0.014	0.000000	0.000000	-1808.74	174.61
3	GUIDE	428091888	7.12	18624	-0.115	0.133	0.059	0.092	12.789677	48.206519	-95.52	-2362.14
4	GUIDE	428094328	6.97	18625	0.014	0.033	0.054	0.090	12.405038	47.763935	1254.67	-1107.26
5	GUIDE	428094376	7.23	18622	0.012	-0.091	0.048	0.078	12.946069	48.056566	-300.14	-1737.40
6	GUIDE	428090984	8.97	18618	0.019	0.087	0.062	0.102	13.818273	47.795721	-2055.68	-244.91
7	GUIDE	428094480	9.59	18612	0.069	-0.163	0.080	0.133	13.932103	47.721832	-2247.50	86.43

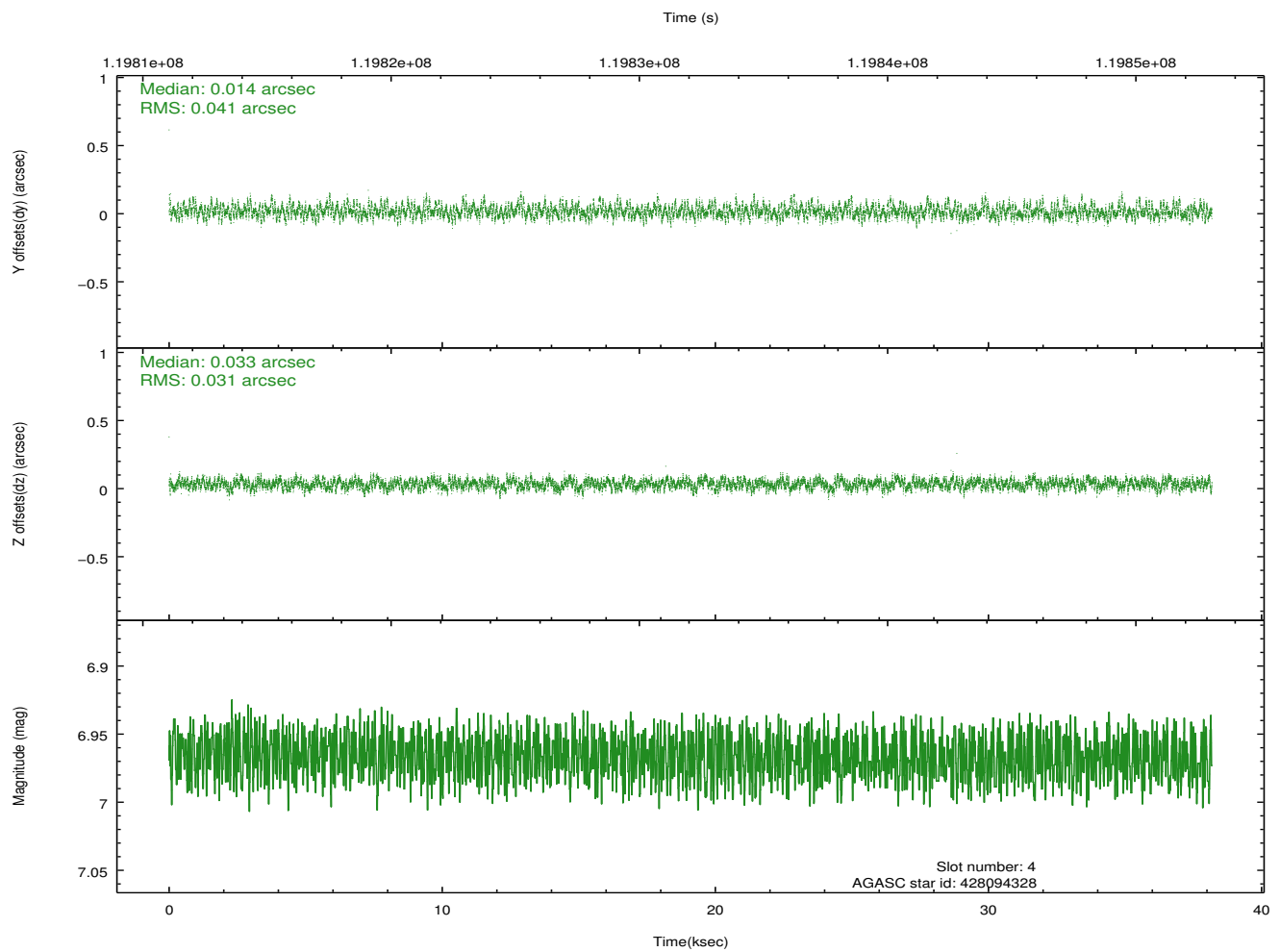
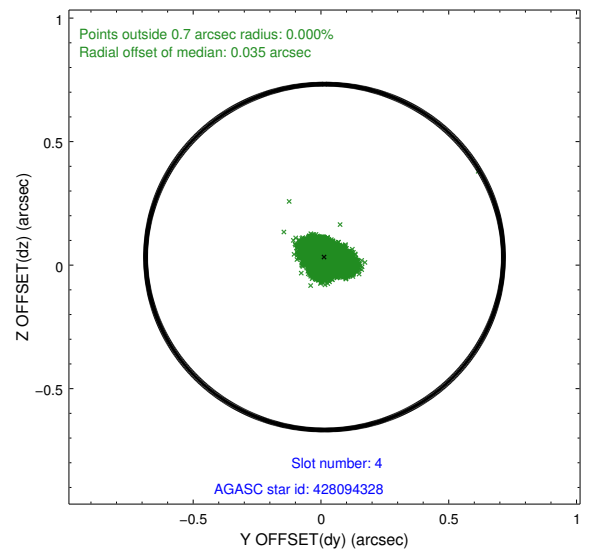
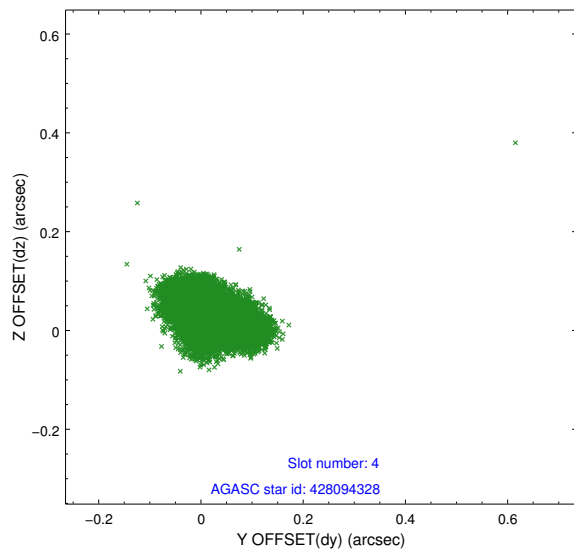
∞

2.4 Star Slots

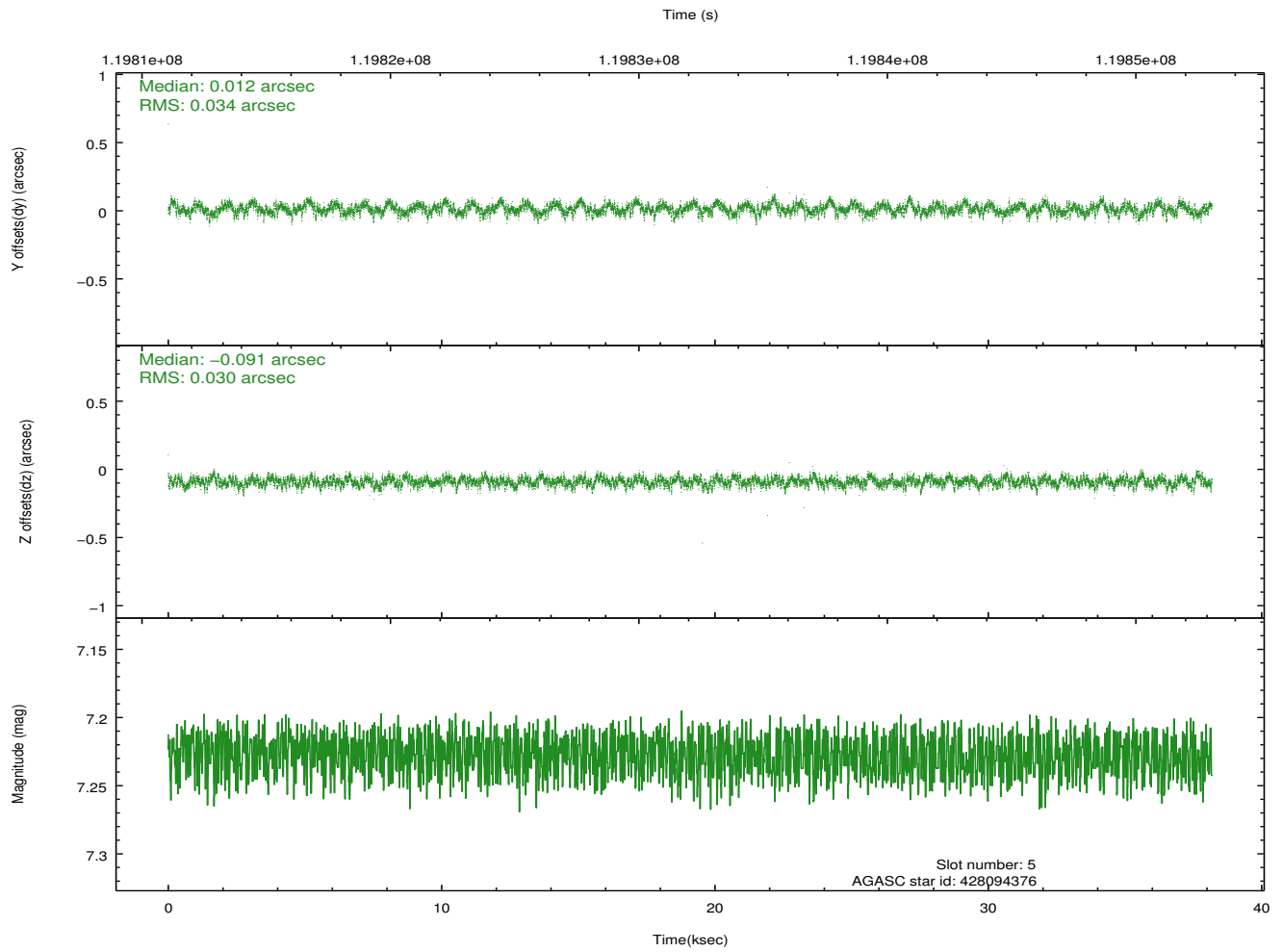
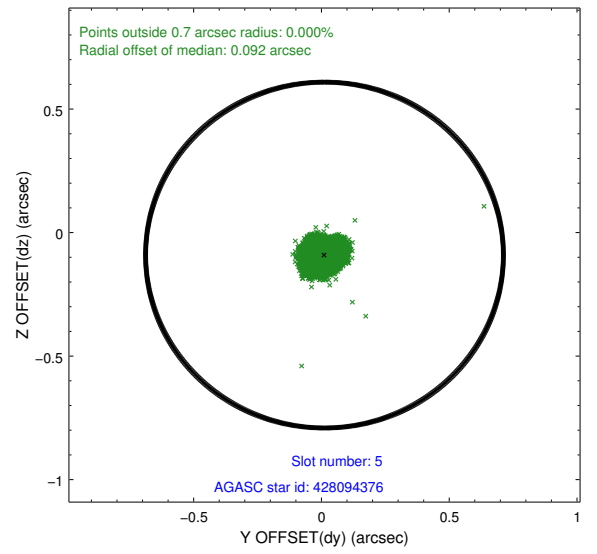
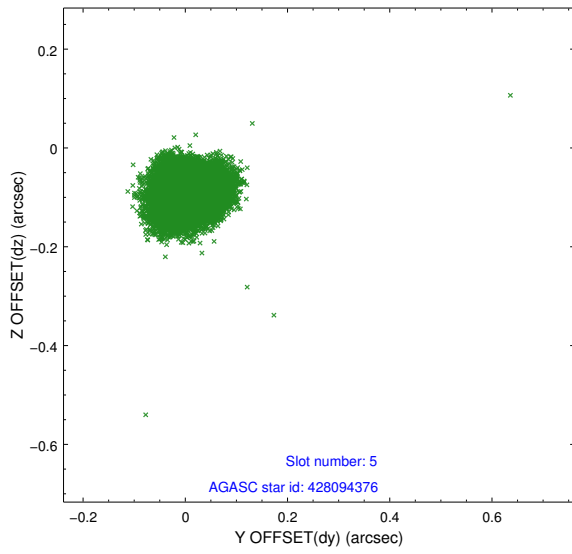
2.4.1 Slot 3



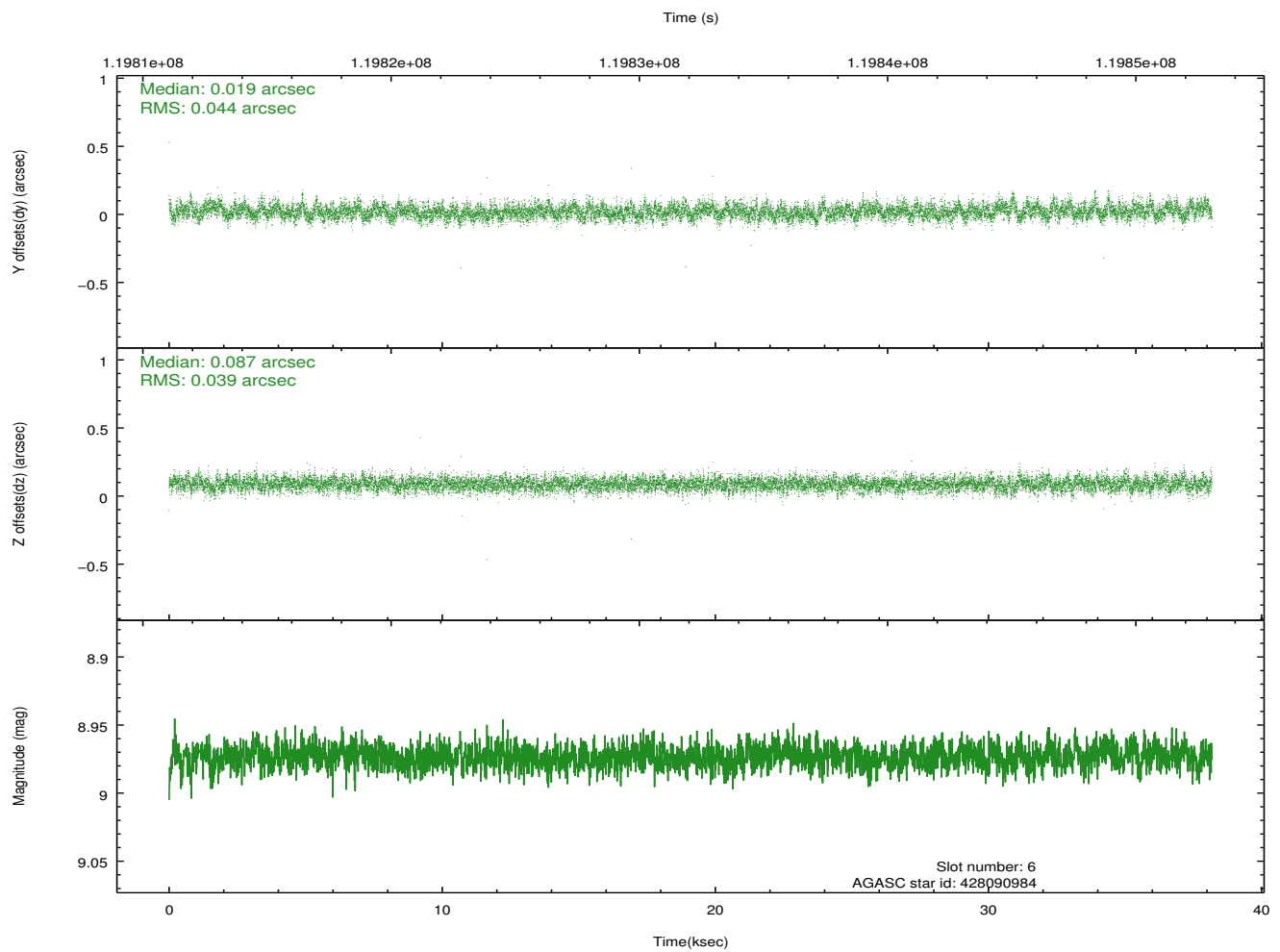
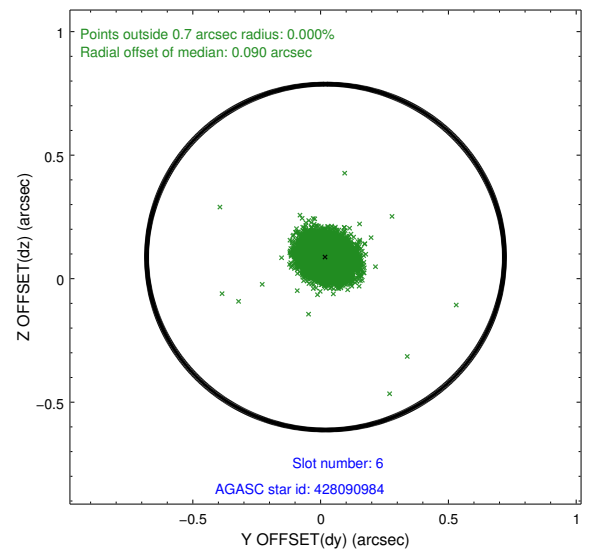
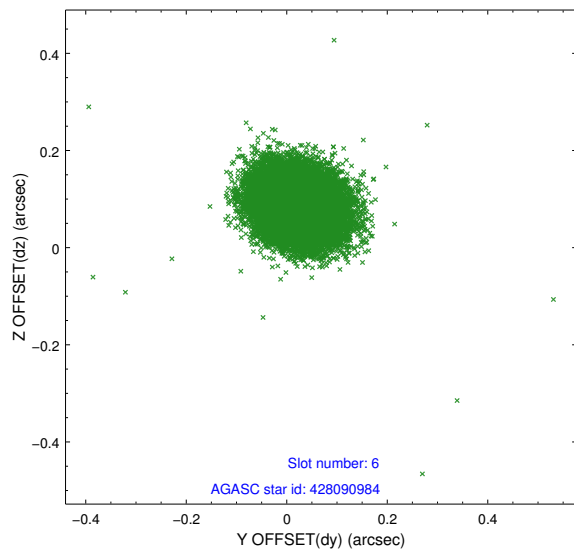
2.4.2 Slot 4



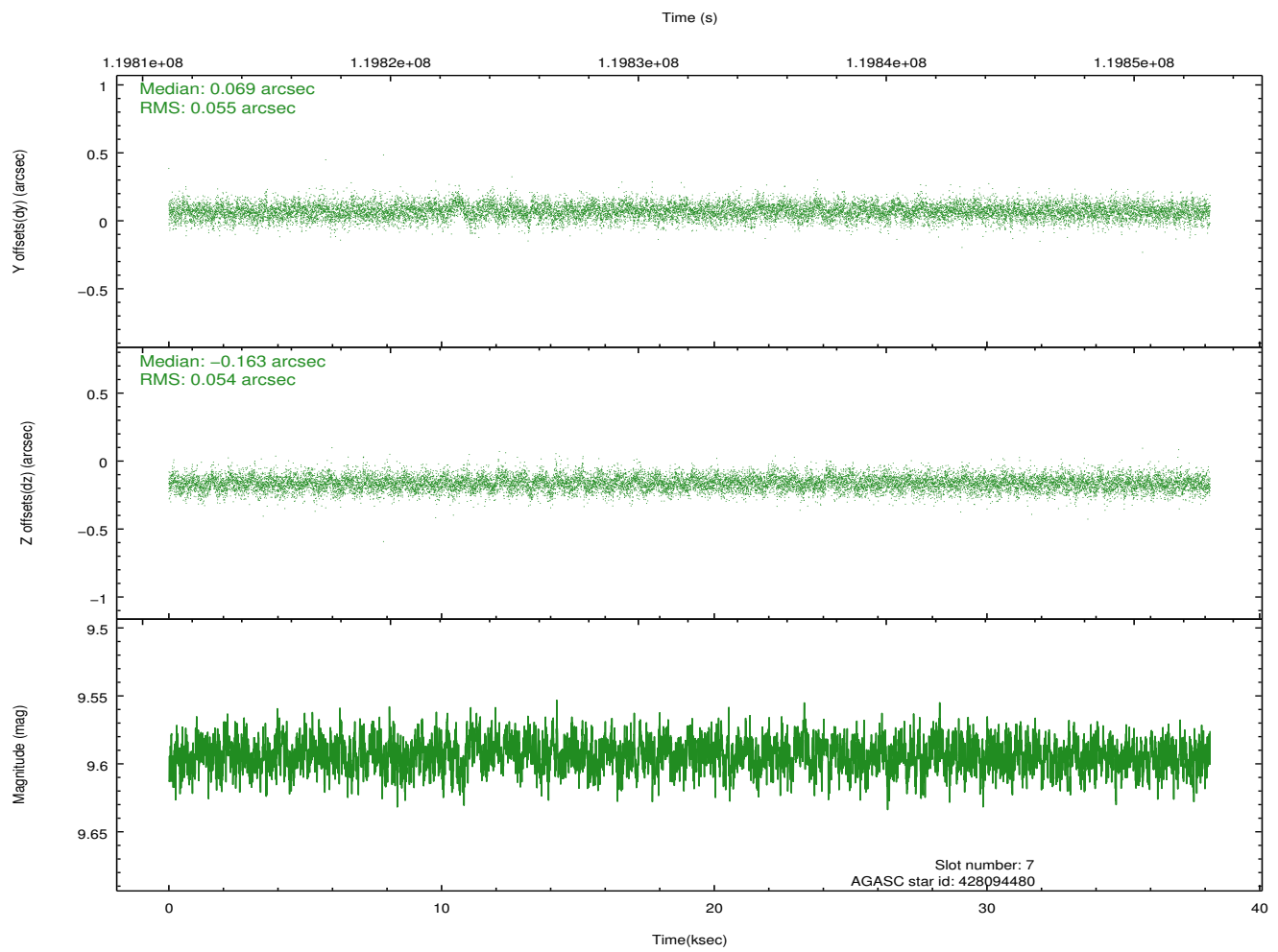
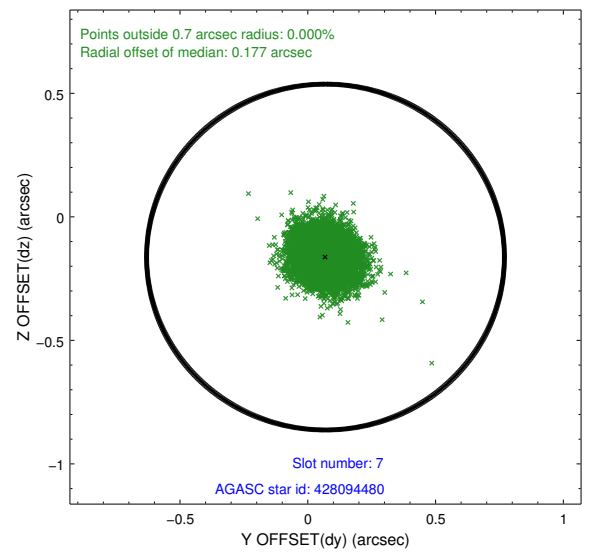
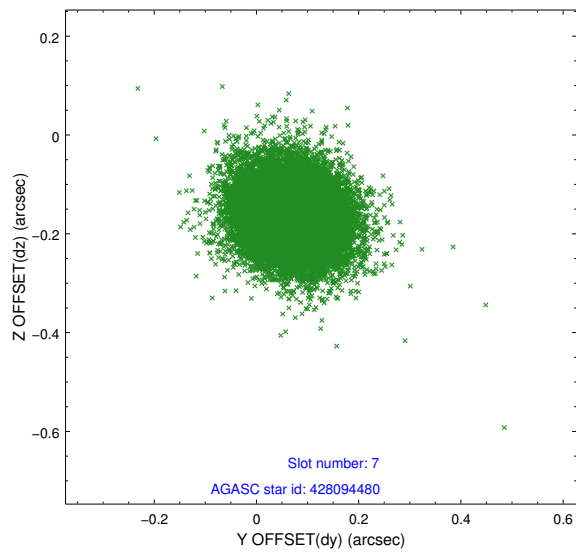
2.4.3 Slot 5



2.4.4 Slot 6

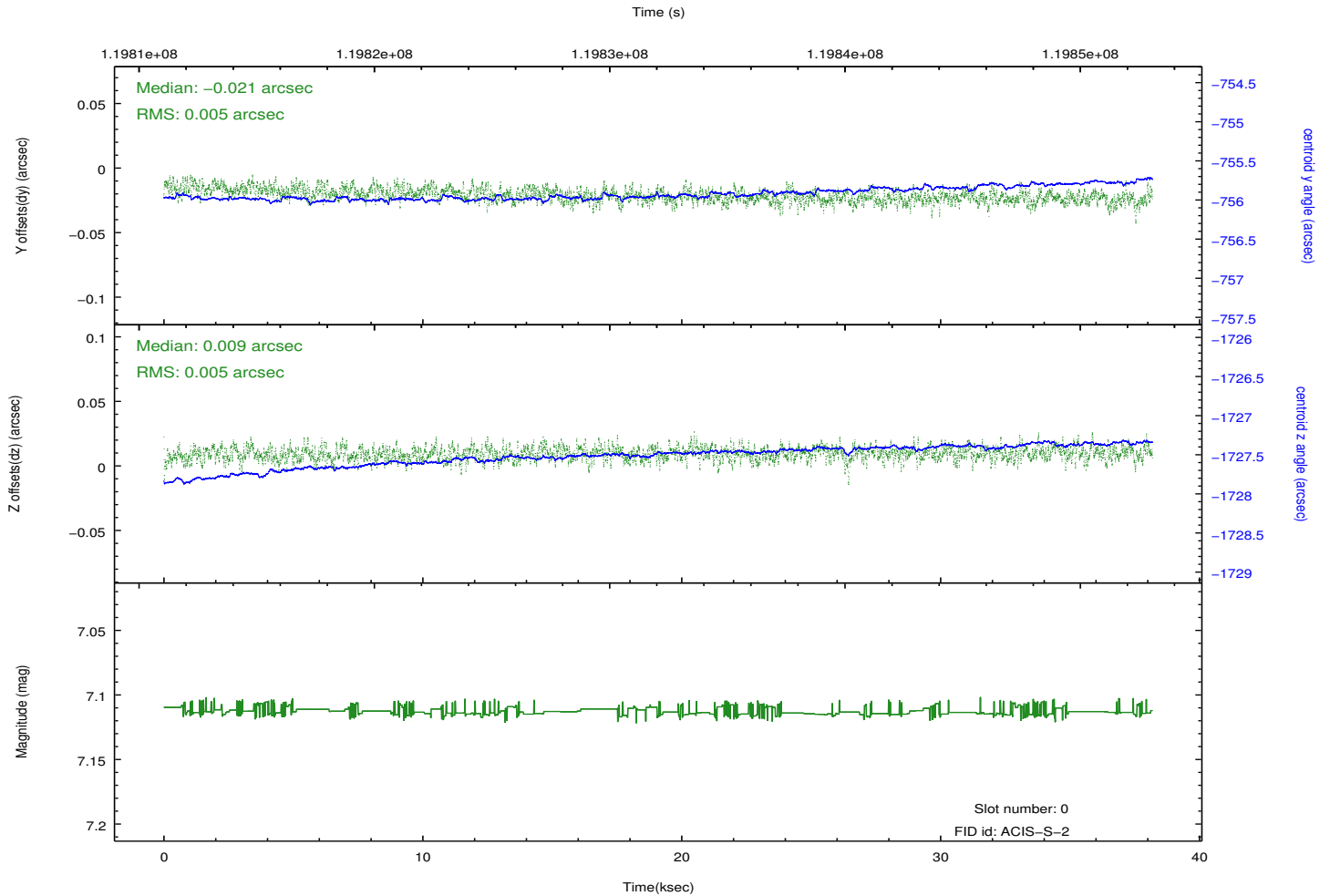
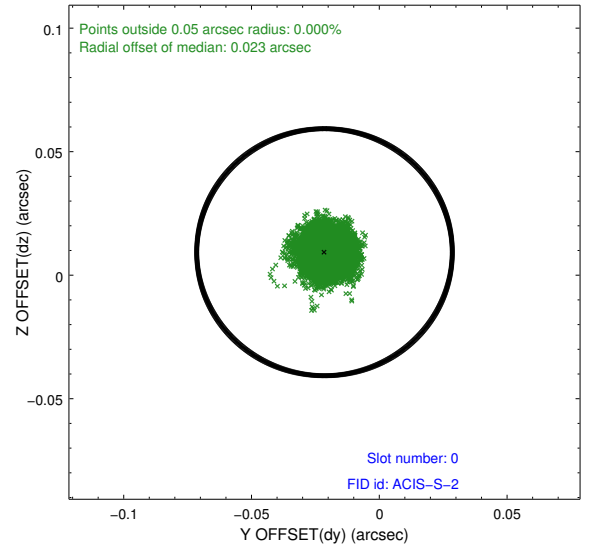
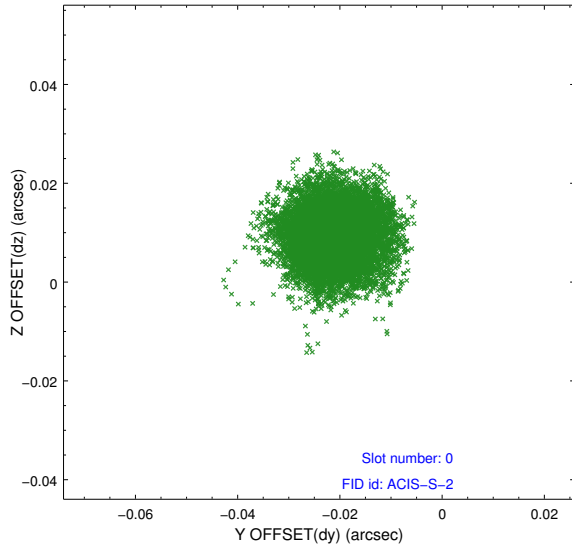


2.4.5 Slot 7

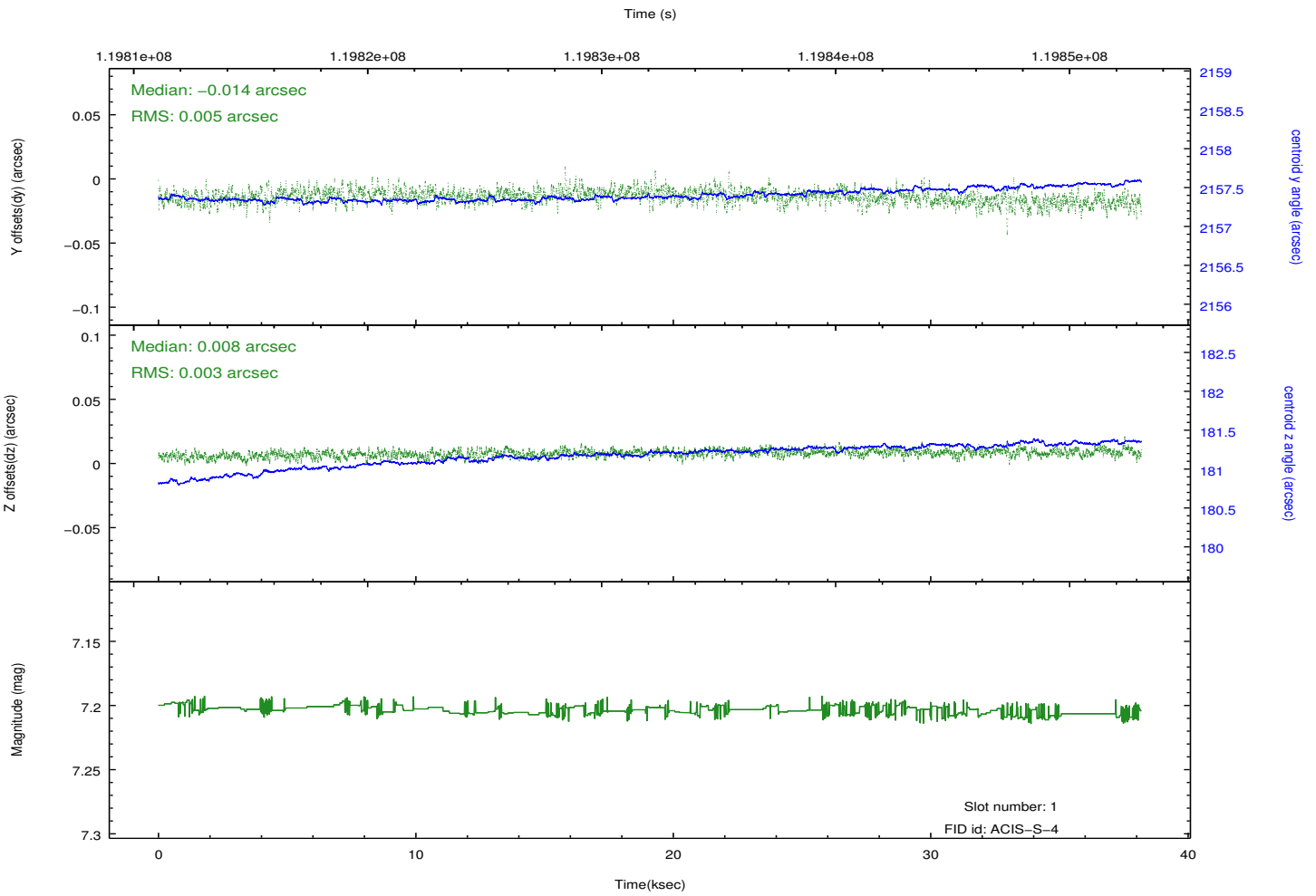
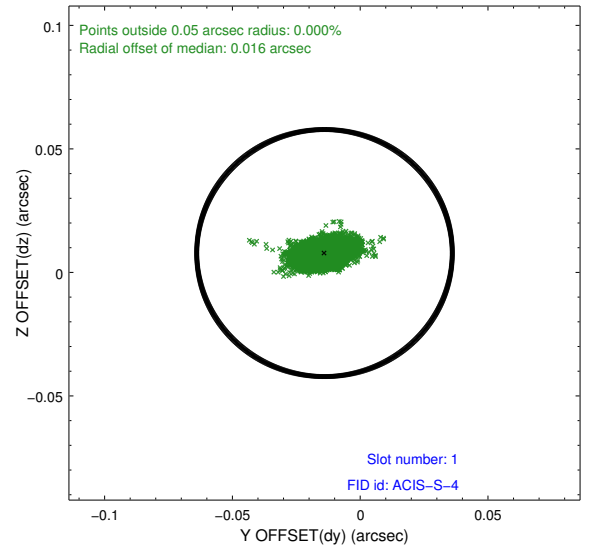
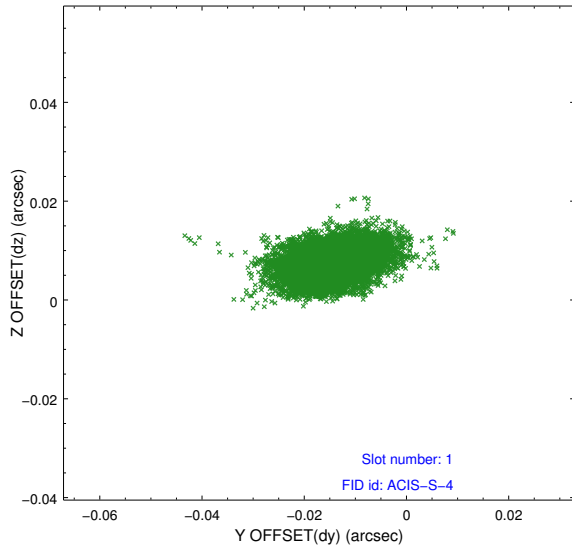


2.5 FID Slots

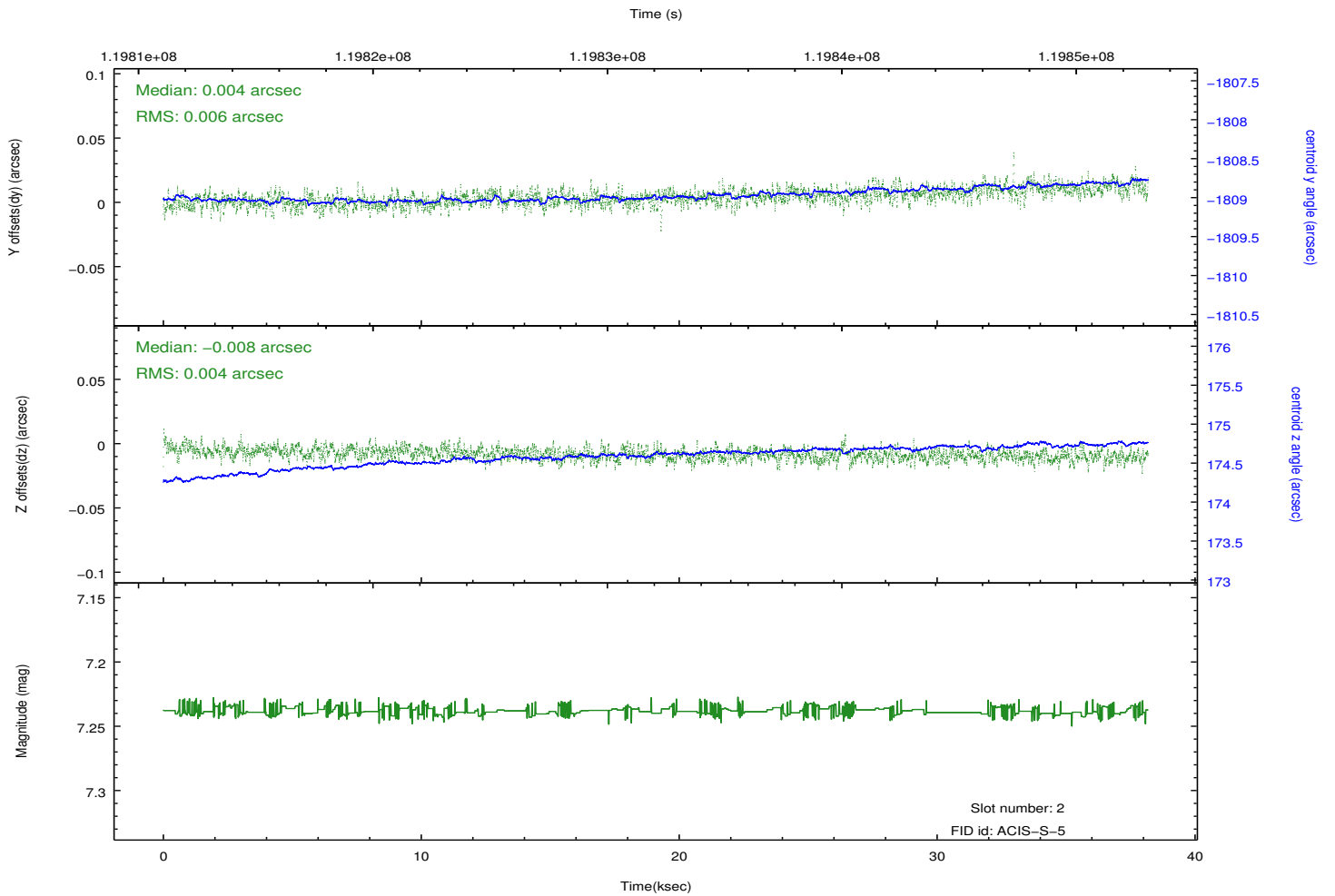
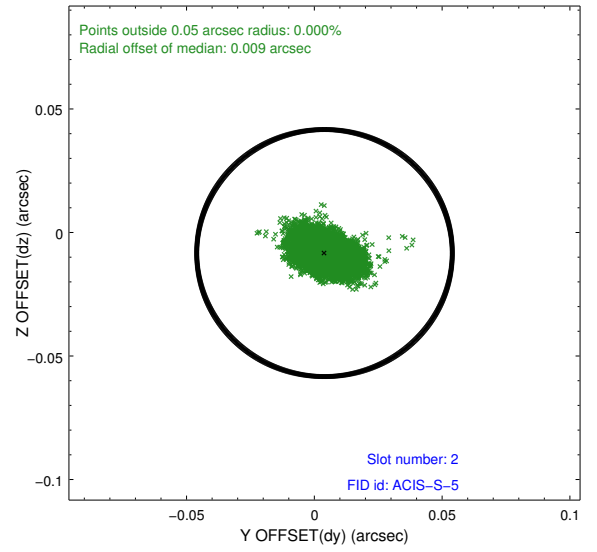
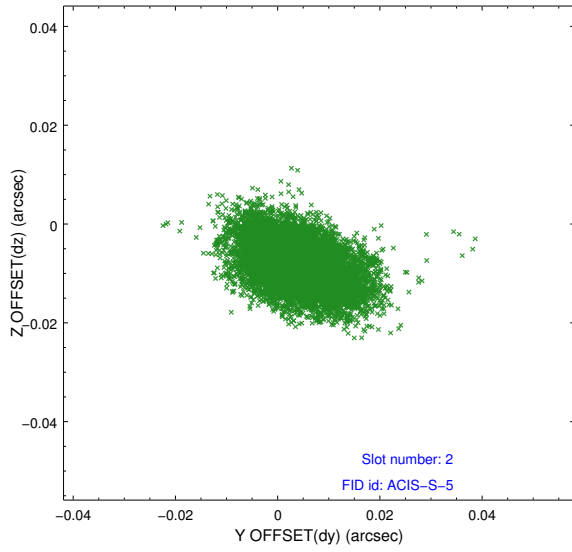
2.5.1 Slot 0



2.5.2 Slot 1



2.5.3 Slot 2



A Summary

A.1 Status

V&V Scientist	Jen Lauer
V&V Date (YYYY-MM-DD)	2012.09.27
V&V Edition	1
V&V Disposition and Status	OK
V&V Charge Time	37.747

A.2 Comments