

V&V Reference Report

L2 ASCDS Version : 8.4.5

Observation 2226 - L2 Version 3
Chandra X-Ray Center

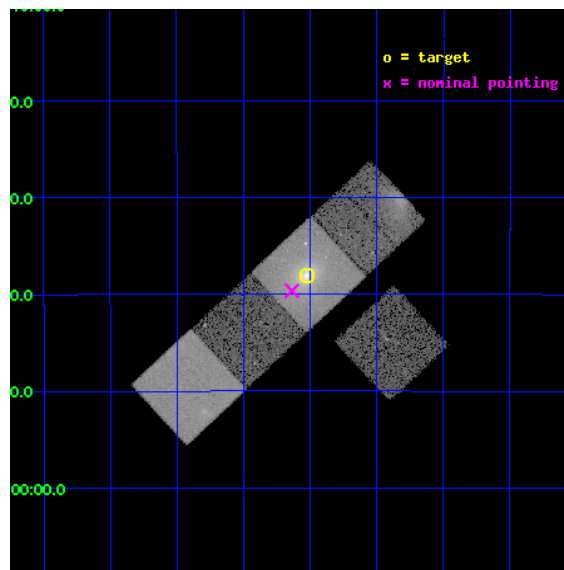
L2 Processing Date : Sep 25 2012

Contents

1	Front	2
2	OBI	3
2.1	OBI	3
2.1.1	Images	3
2.1.2	Bias	3
2.1.3	Parameters	4
2.1.4	Events	4
2.2	Compared Parameters	5
2.3	Aspect	6
2.4	Star Slots	9
2.4.1	Slot 3	9
2.4.2	Slot 4	10
2.4.3	Slot 5	11
2.4.4	Slot 6	12
2.4.5	Slot 7	13
2.5	FID Slots	14
2.5.1	Slot 0	14
2.5.2	Slot 1	15
2.5.3	Slot 2	16
A	Summary	17
A.1	Status	17
A.2	Comments	17

1 Front

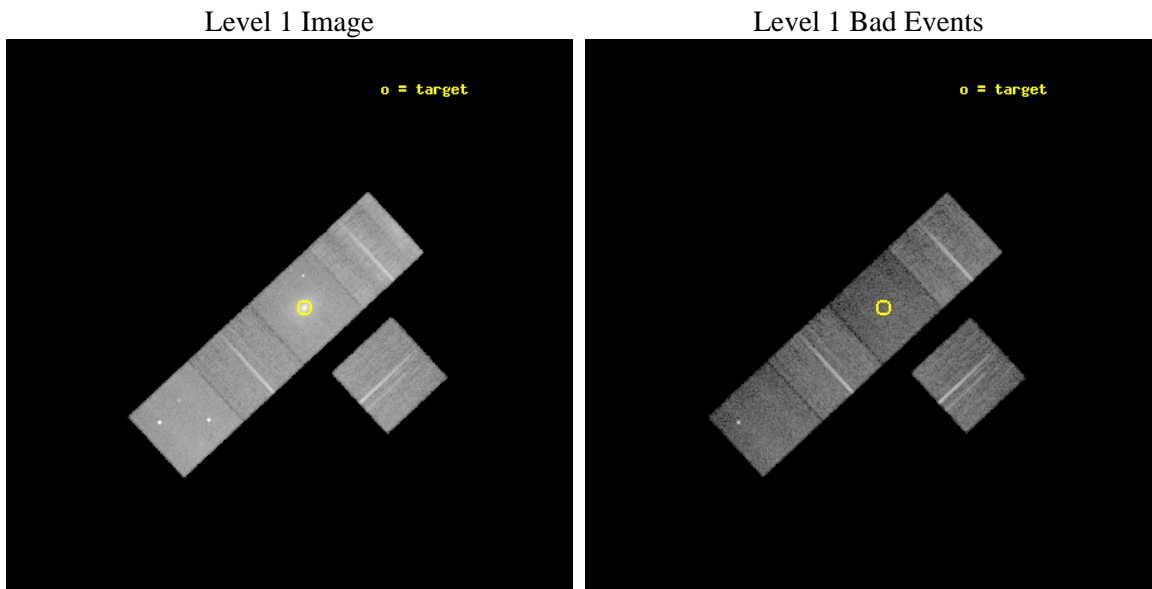
seq_num	800165	Sequence number
obs_id	2226	Observation id
title	A DIFFERENTIAL X-RAY GUNN-PETERSON TEST USING A GIANT CLUSTER FILAMENT	Proposal title
observer	Dr Maxim Markevitch	Principal investigator
object	A2556	Source name
dtcycle	0	
cycle	P	events from which exps? Prim/Second/Both
ra_targ	348.255833	Observer's specified target RA [deg]
dec_targ	-21.634	Observer's specified target Dec [deg]
ra_nom	348.28398560639	Nominal RA [deg]
dec_nom	-21.66077158221	Nominal Dec [deg]
roll_nom	317.11014787548	Nominal Roll [deg]
revision	3	Processing version of data
ontime	20149.958991006	Sum of GTIs [s]
livetime	19886.684942605	Livetime [s]
ontime3	20149.959010914	Sum of GTIs [s]
ontime5	20149.958991006	Sum of GTIs [s]
ontime6	20146.817990825	Sum of GTIs [s]
ontime7	20149.958991006	Sum of GTIs [s]
ontime8	20146.818040669	Sum of GTIs [s]
l2events	191388	Number of level 2 events



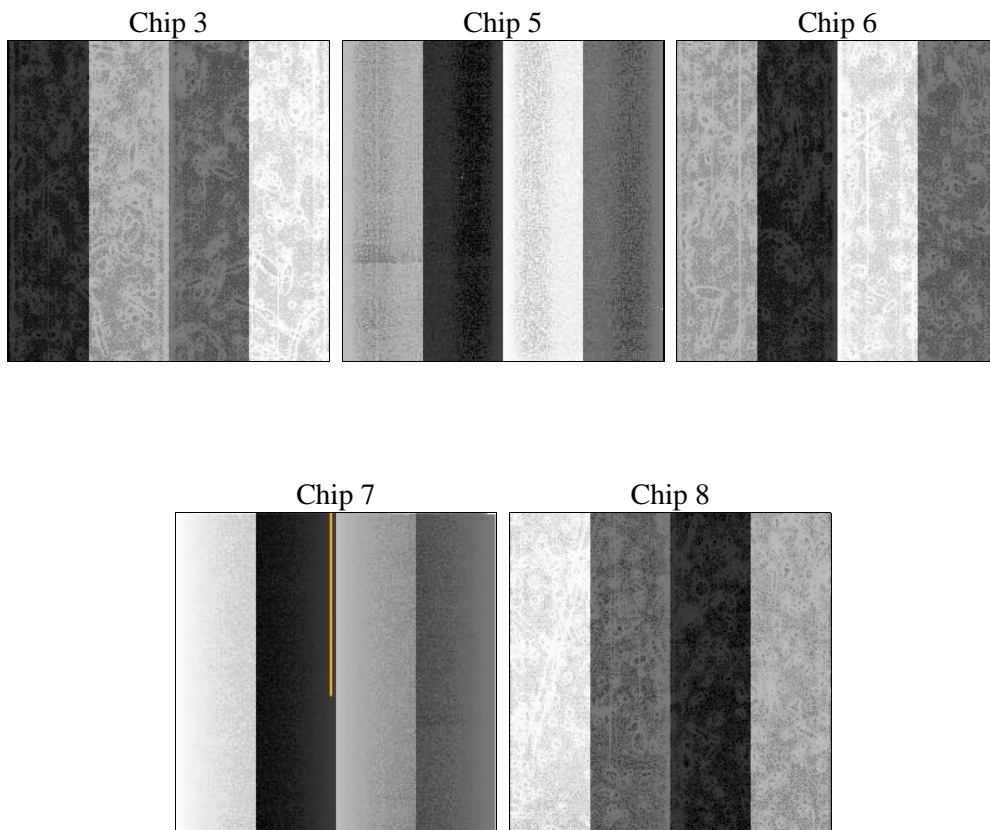
2 OBI

2.1 OBI

2.1.1 Images



2.1.2 Bias



2.1.3 Parameters

obi_num	1	Obi number	sched_exp_time	20000.000000	[s] Scheduled observation exposure time
ascdsver	8.4.5	Processing system revision	ontime	20149.958991006	Sum of GTIs [s]
caldbver	4.5.1.1	 	ontime3	20149.959010914	Sum of GTIs [s]
date	2012-09-25T03:33:37	Date and time of file creation	ontime5	20149.958991006	Sum of GTIs [s]
revision	3	Processing version of data	ontime6	20146.817990825	Sum of GTIs [s]
			ontime7	20149.958991006	Sum of GTIs [s]
			ontime8	20146.818040669	Sum of GTIs [s]
			l1events	686952	Number of level 1 events

2.1.4 Events

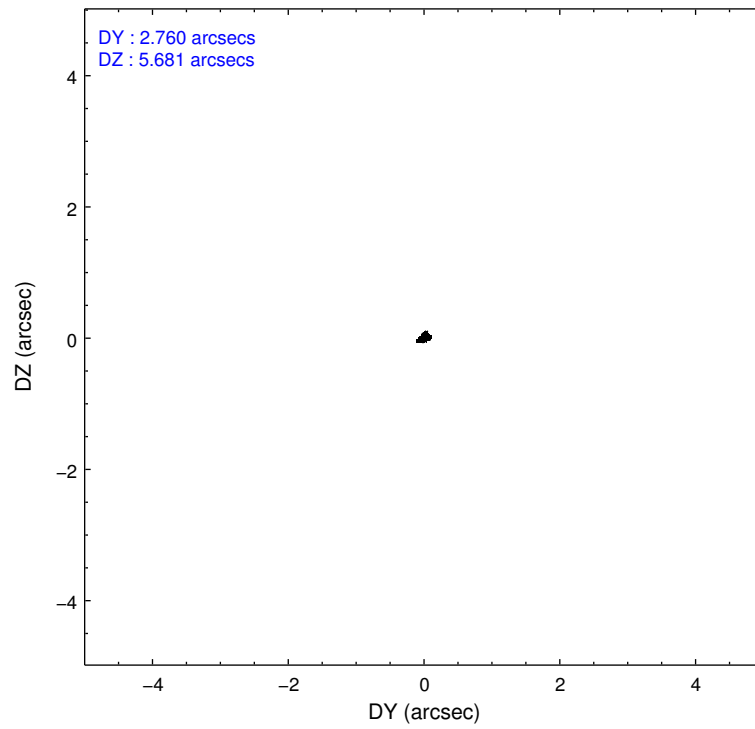
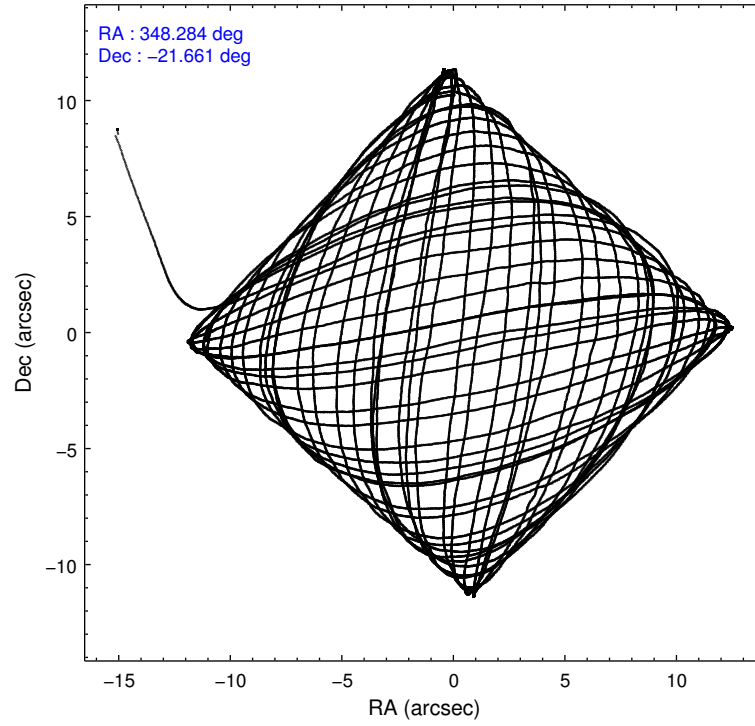
	ccd 3	ccd 5	ccd 6	ccd 7	ccd 8
level 1 events	108572	145046	114560	159909	158865
rejected events	98760	74013	102636	64564	111437
rejected %	90%	51%	89%	40%	70%

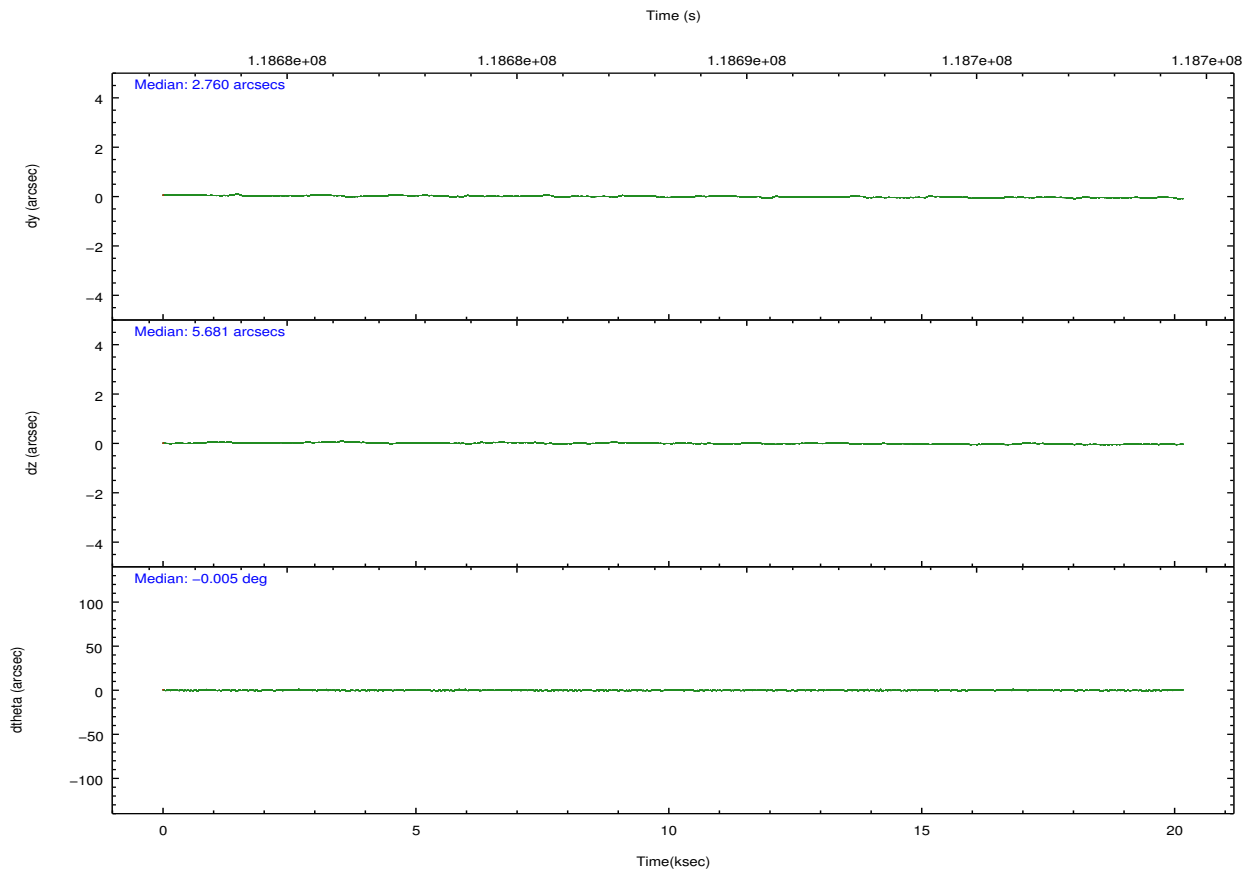
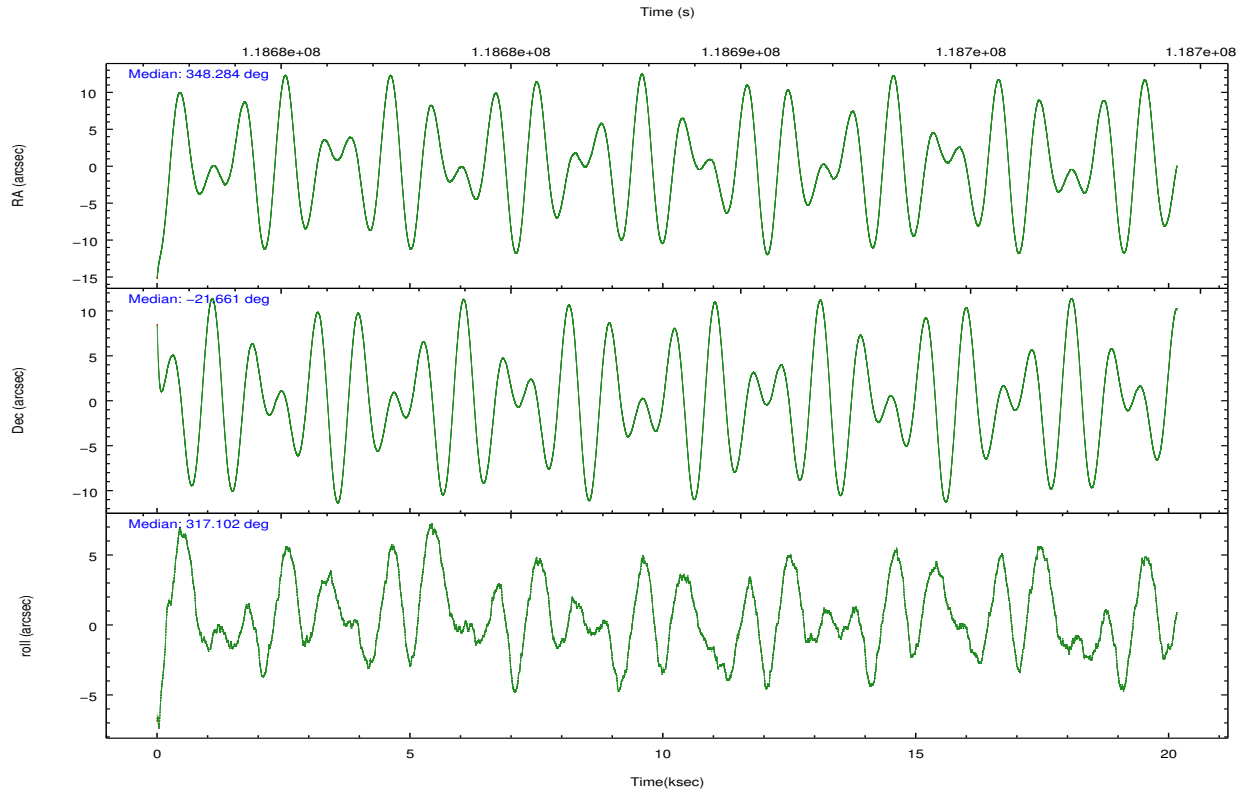
	ccd 3	ccd 5	ccd 6	ccd 7	ccd 8
grade 0 events	3962	12365	5076	20875	18382
	3%	8%	4%	13%	11%
grade 1 events	34	1230	46	111	141
	0%	0%	0%	0%	0%
grade 2 events	2098	20586	2627	22327	8952
	1%	14%	2%	13%	5%
grade 3 events	1140	3382	1289	10256	5750
	1%	2%	1%	6%	3%
grade 4 events	1130	3423	1204	10253	5236
	1%	2%	1%	6%	3%
grade 5 events	3540	11312	4008	12271	5687
	3%	7%	3%	7%	3%
grade 6 events	1996	35005	2404	34619	11469
	1%	24%	2%	21%	7%
grade 7 events	94672	57743	97906	49197	103248
	87%	39%	85%	30%	64%

2.2 Compared Parameters

Parameter	Planned	Actual	Parameter	Planned	Actual
Instrument	ACIS	ACIS	Obspar format version number	7	7
Detector	ACIS-35678	ACIS-35678	Obspar file type	PREDICTED	ACTUAL
Grating	NONE	NONE	Obspar update status	NONE	UPDATED
Data mode	VFAINT	VFAINT	Number of optional ACIS chips dropped	0	0
Observation mode	POINTING	POINTING	On-chip summing requested	N	N
[deg] Pointing RA	348.255329	348.2839856063864	Subarray requested	NONE	NONE
[deg] Pointing Dec	-21.655007	-21.66077158221034	Alternating exposures requested	N	N
[deg] Pointing Roll	316.942946	317.1101478754755	[s] Primary exposure time	0.000000	3.1
[mm] SIM focus pos	-0.684267	-0.6828225247311905			
[mm] SIM defocus	0	0.001444936568705701			
[mm] SIM translation stage pos	-190.132523	-190.1425803651734			
[mm] SIM translation stage offset	0	0.01005778216563158			
[s] Observation start time (MET)	118678477.184000	118676959.5979			
Observation start date	2001-10-05T14:13:33	2001-10-05T13:49:19			
[s] Observation end time (MET)	118698477.184000	118699310.74878			
Observation end date	2001-10-05T19:46:53	2001-10-05T20:01:50			
Read mode	TIMED	TIMED			

2.3 Aspect



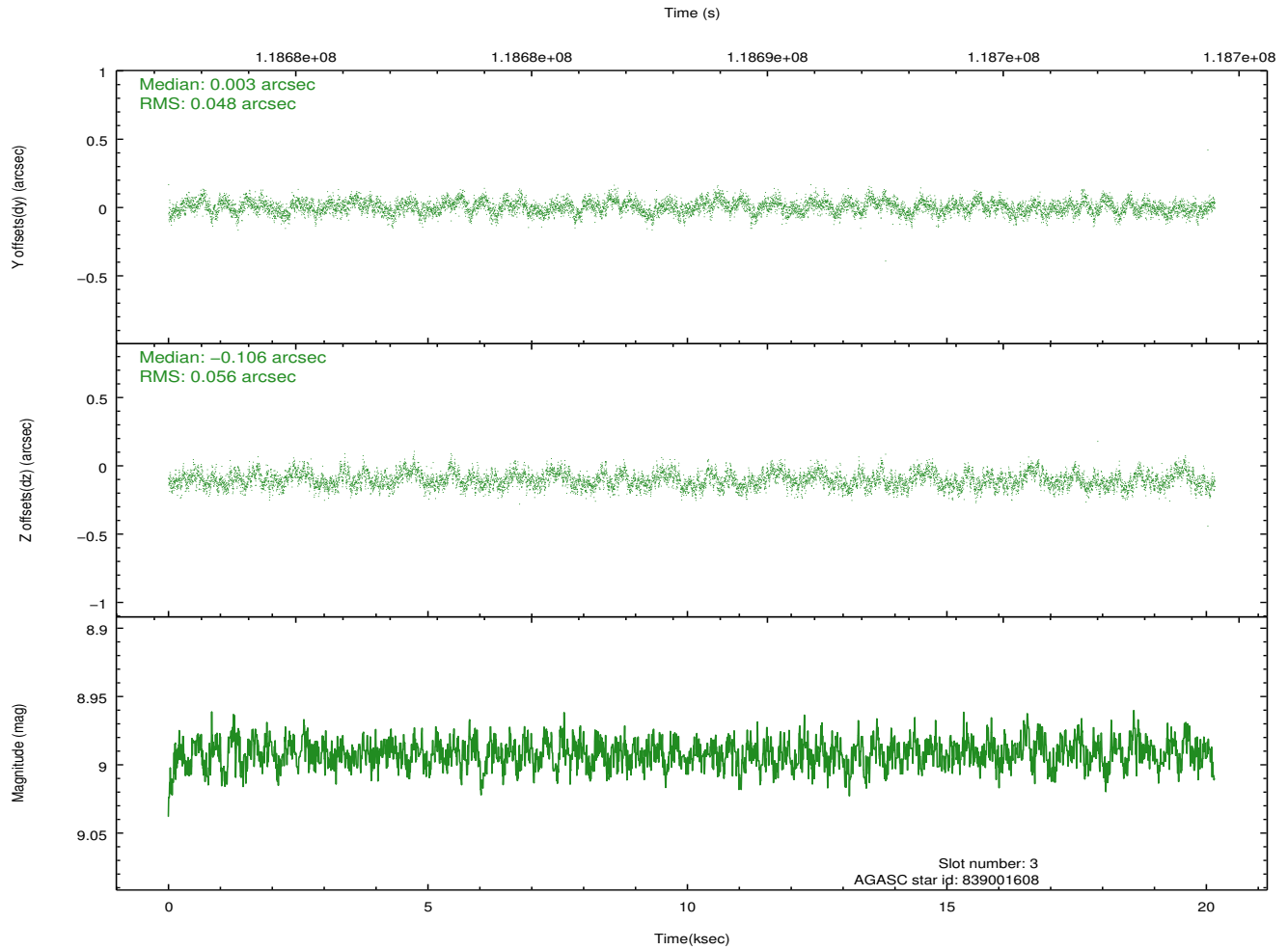
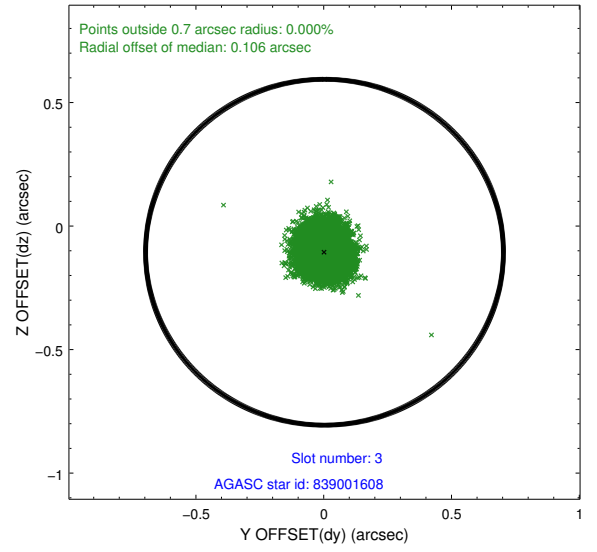
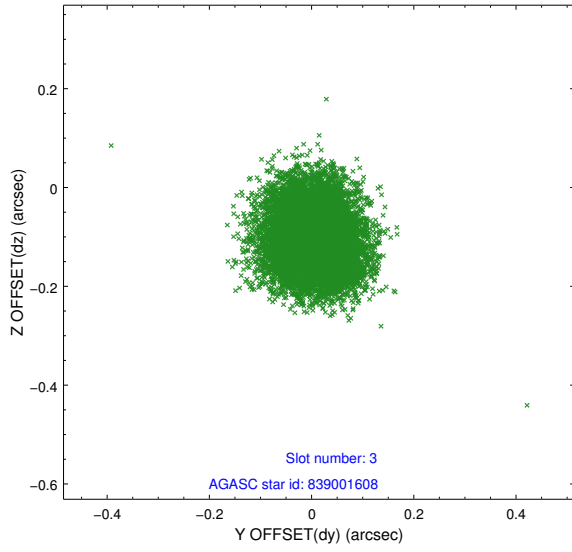


Slot Statistics

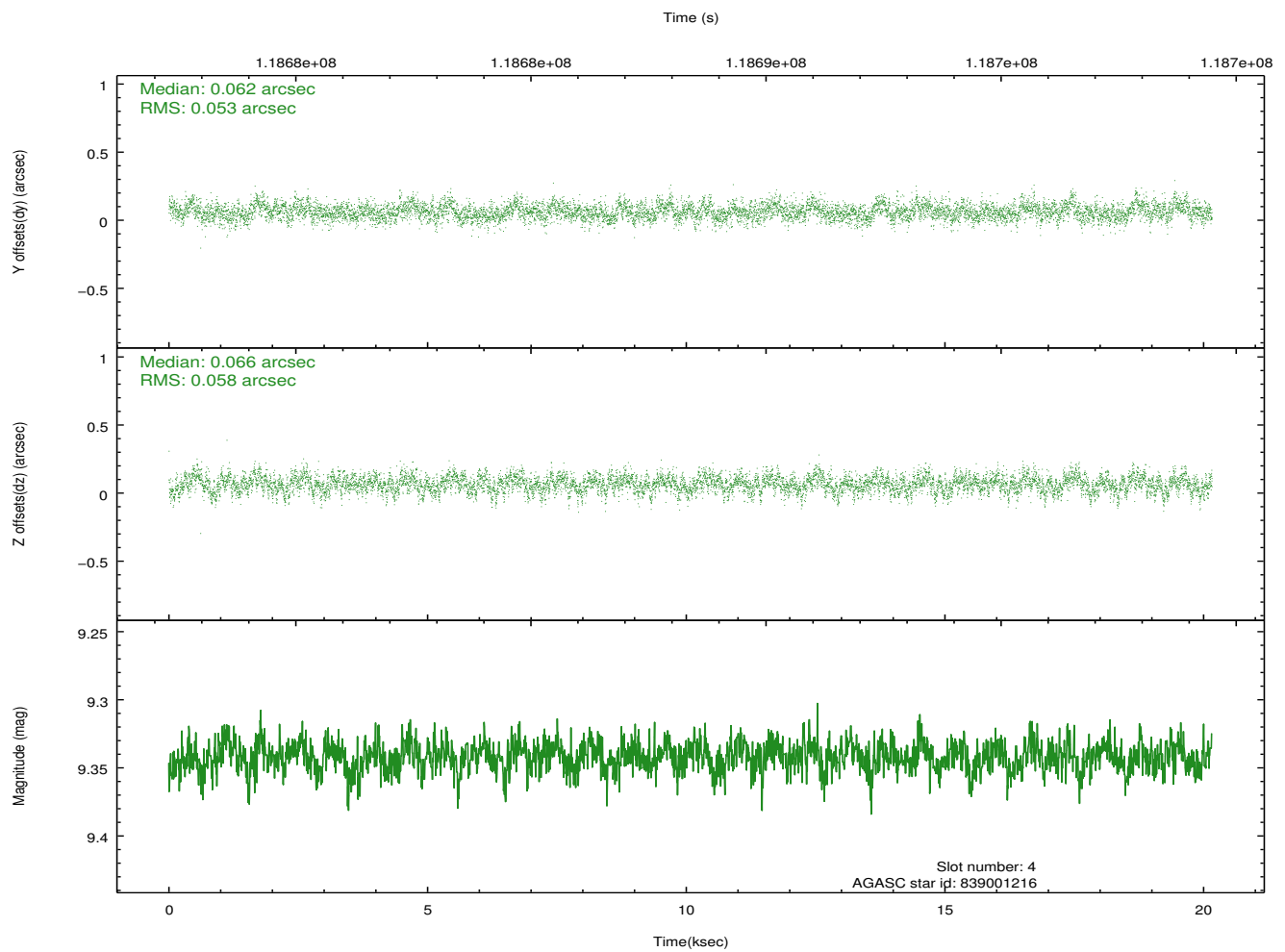
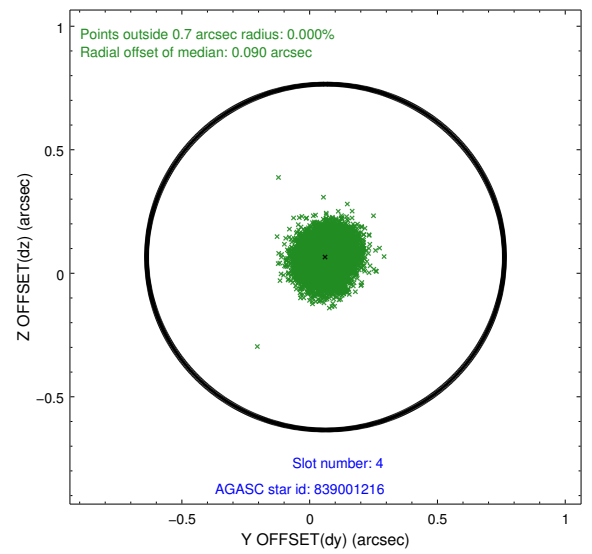
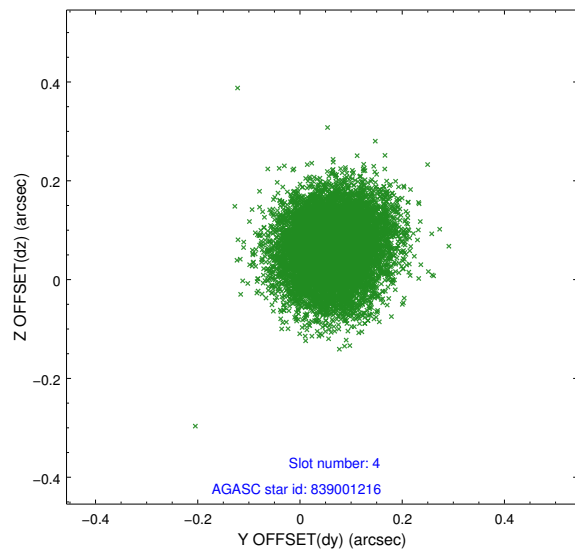
slot	status	id	mag	n_pts	med_dy	med_dz	dr1	dr2	ra	dec	mean_y	mean_z
0	FID	ACIS-S-2	7.12	4915	-0.034	0.008	0.007	0.011	0.000000	0.000000	-755.38	-1726.77
1	FID	ACIS-S-4	7.21	4916	-0.025	0.014	0.006	0.010	0.000000	0.000000	2157.77	181.60
2	FID	ACIS-S-5	7.24	4915	0.028	-0.014	0.007	0.012	0.000000	0.000000	-1807.97	175.36
3	GUIDE	839001608	8.99	9831	0.003	-0.106	0.079	0.126	347.928467	-21.735788	-599.11	-959.73
4	GUIDE	839001216	9.34	9831	0.062	0.066	0.083	0.135	348.909910	-21.852423	2086.52	970.72
5	GUIDE	838999584	9.41	9832	-0.033	-0.002	0.081	0.132	347.735138	-21.602198	-1399.62	-1052.03
6	GUIDE	838994864	9.25	9833	0.007	0.097	0.129	0.198	348.913779	-21.325499	806.40	2371.03
7	GUIDE	839000400	9.73	9829	-0.048	-0.047	0.109	0.176	347.952883	-22.218103	648.60	-2169.77

2.4 Star Slots

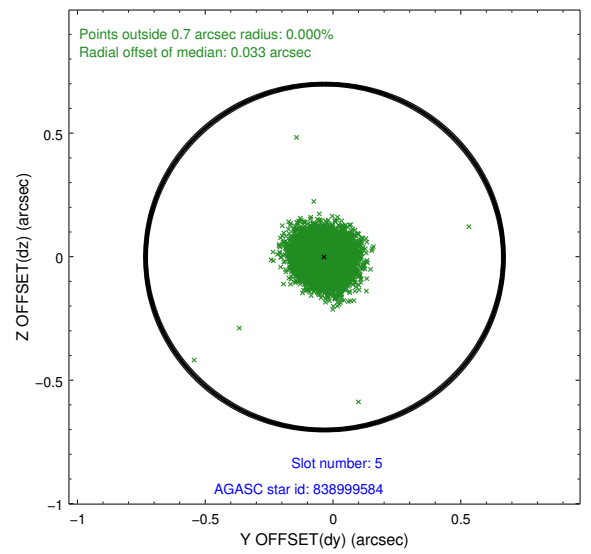
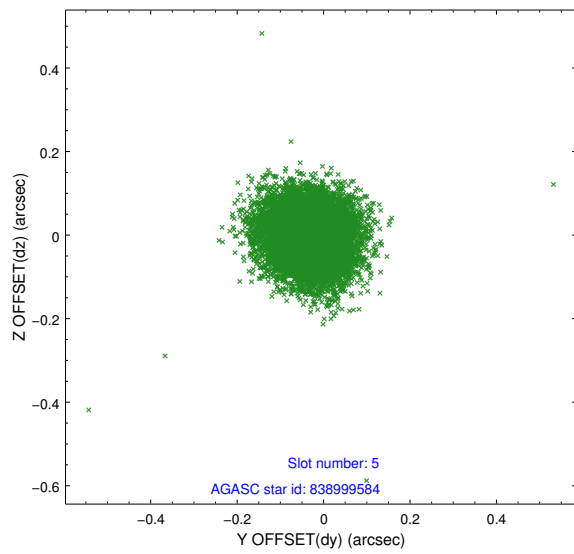
2.4.1 Slot 3



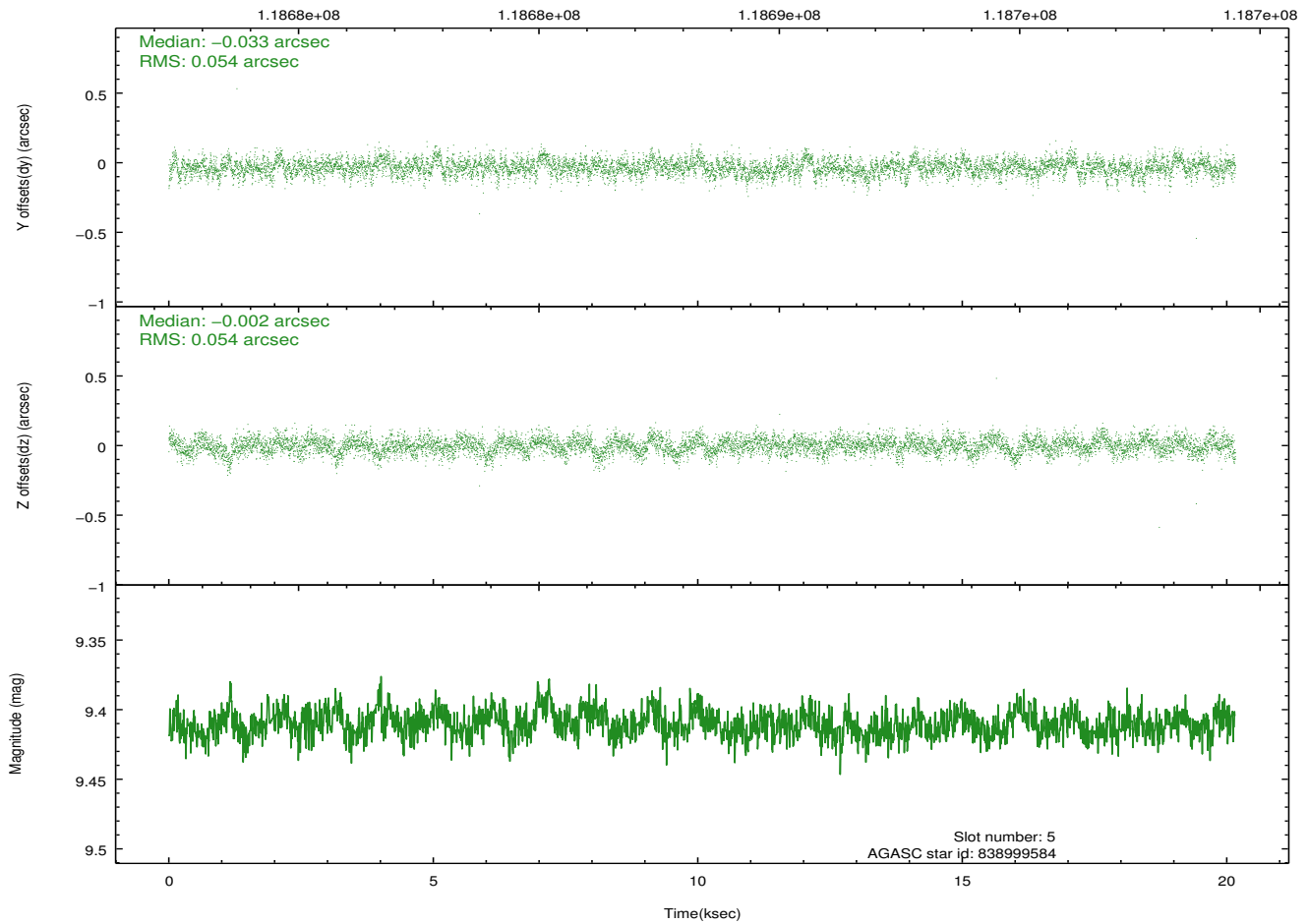
2.4.2 Slot 4



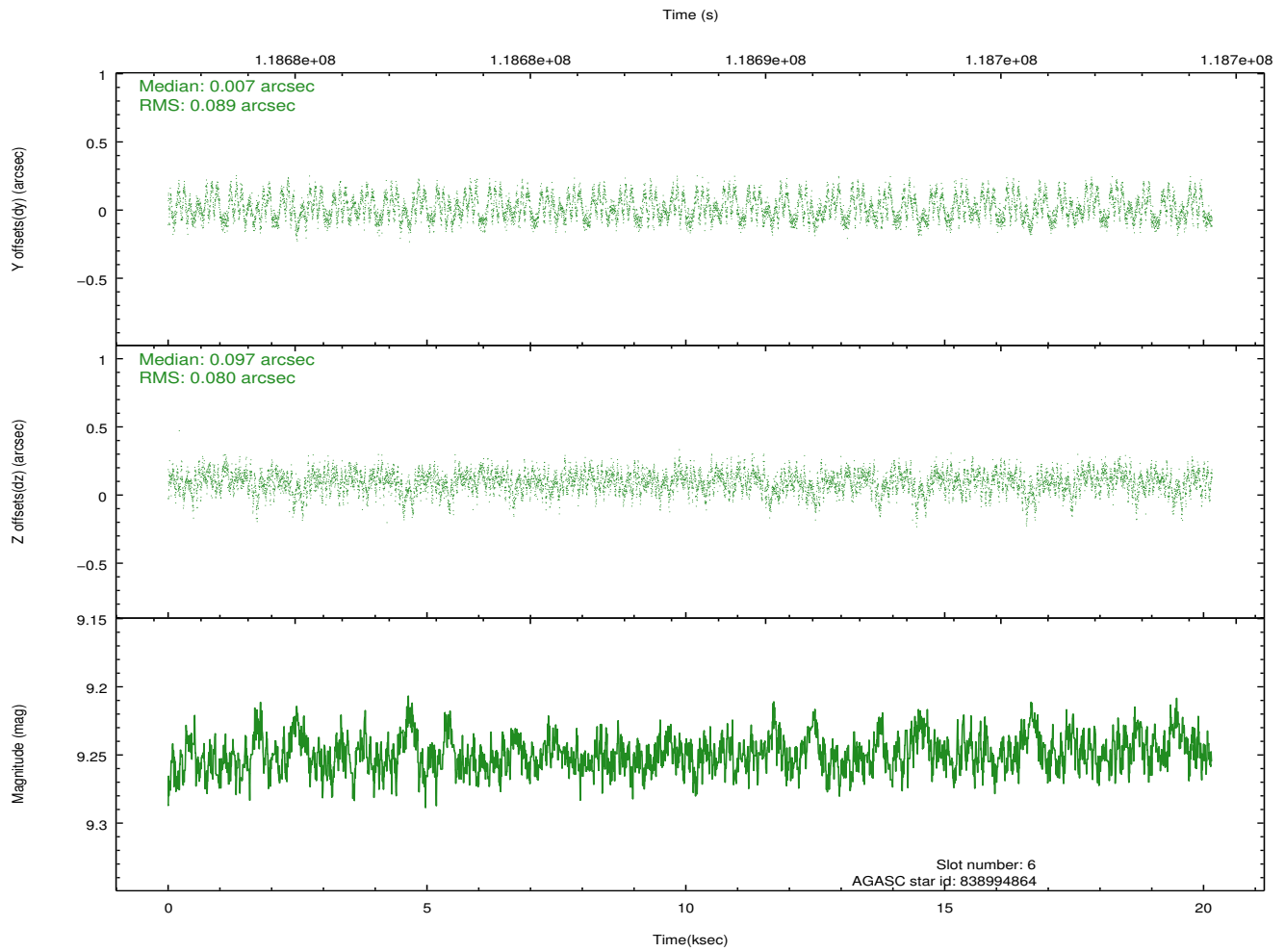
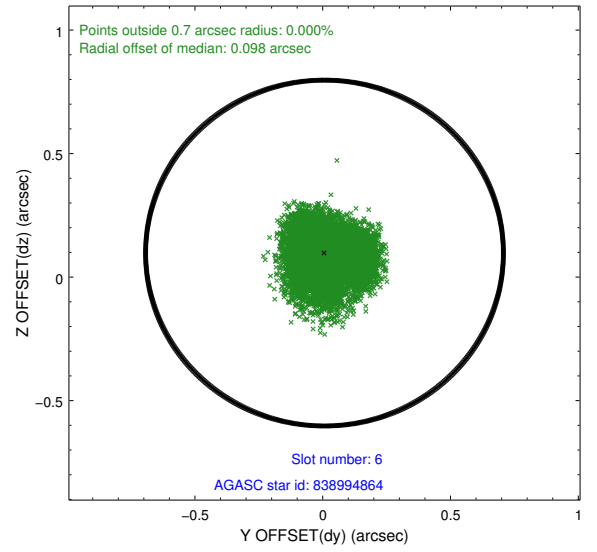
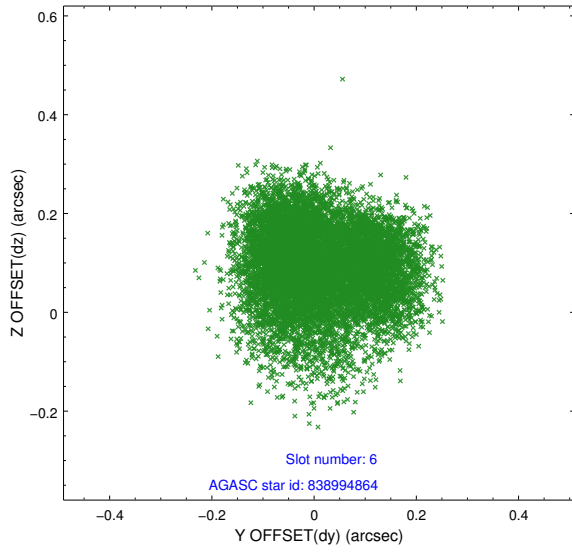
2.4.3 Slot 5



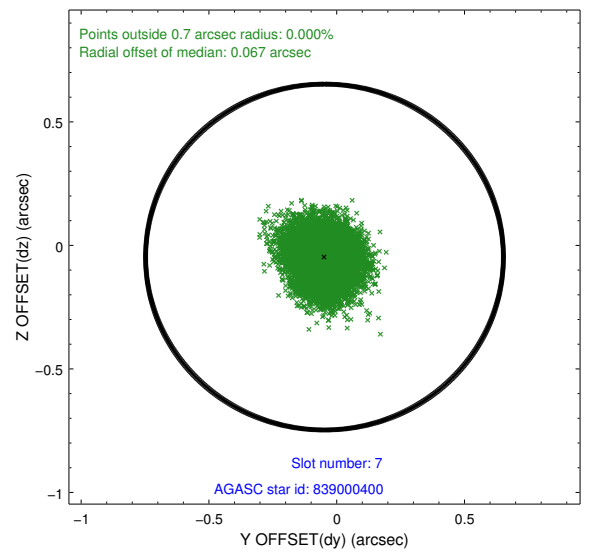
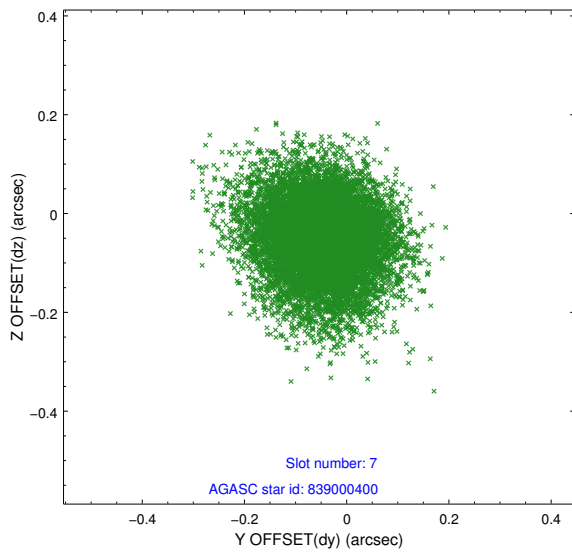
Time (s)



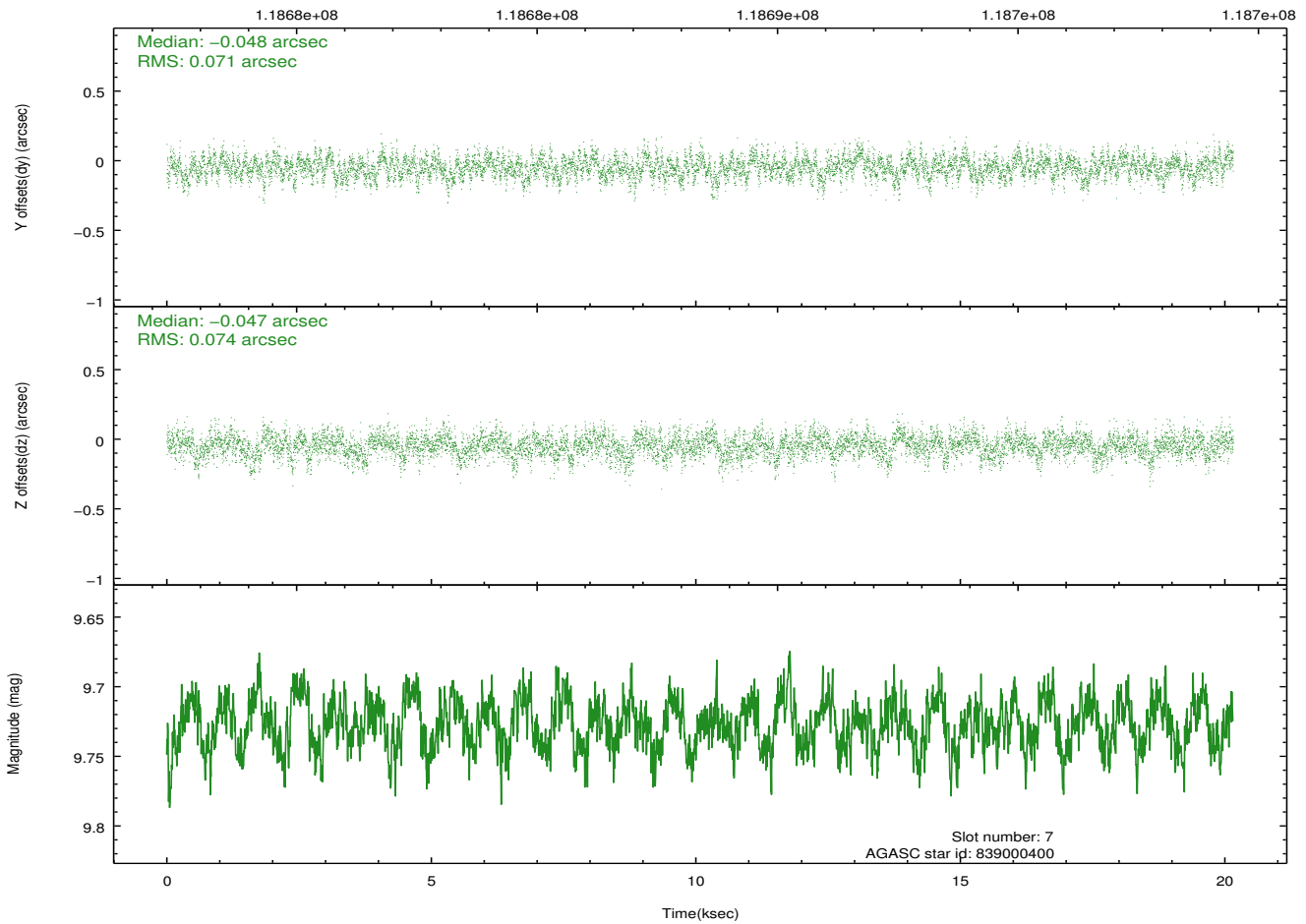
2.4.4 Slot 6



2.4.5 Slot 7

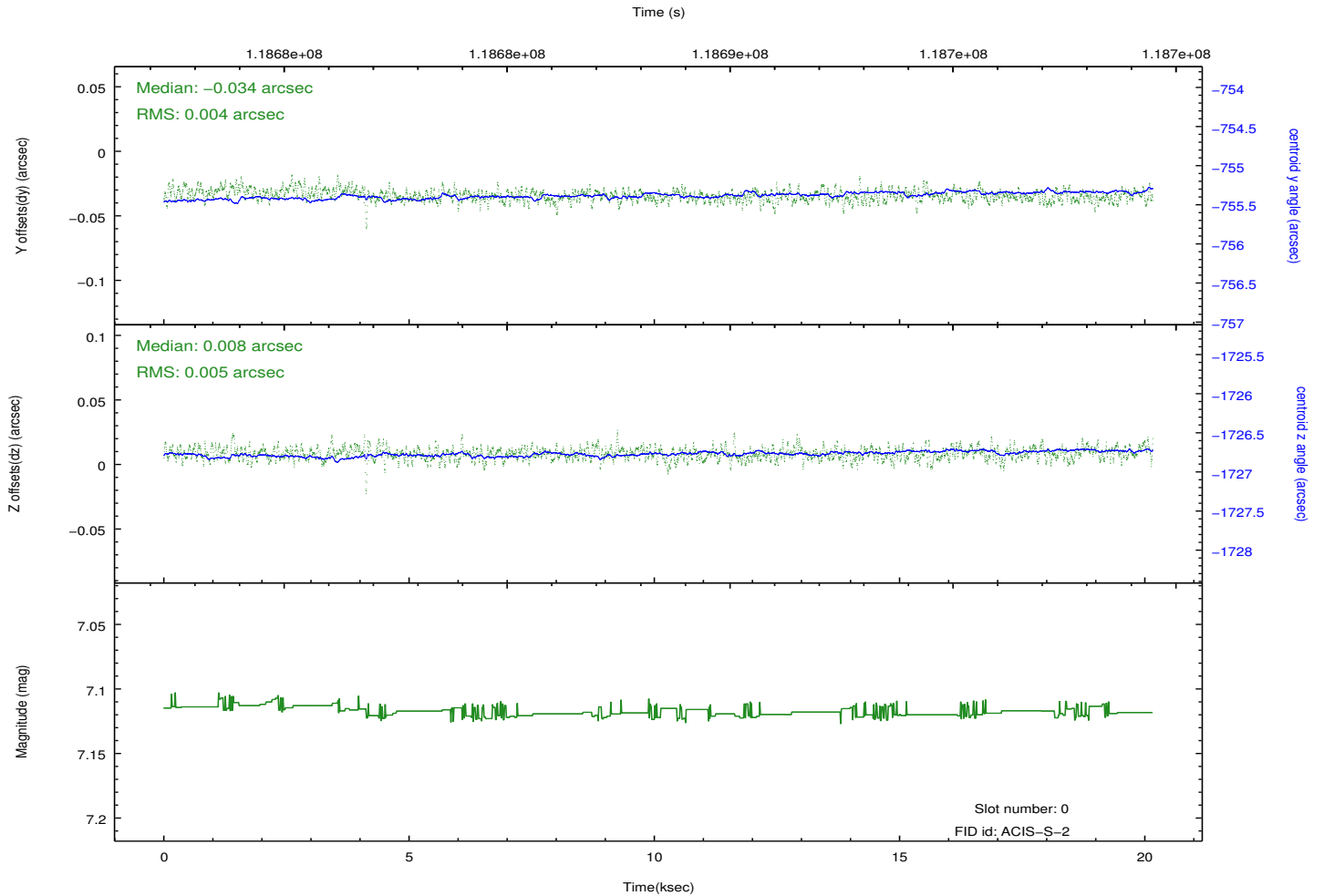
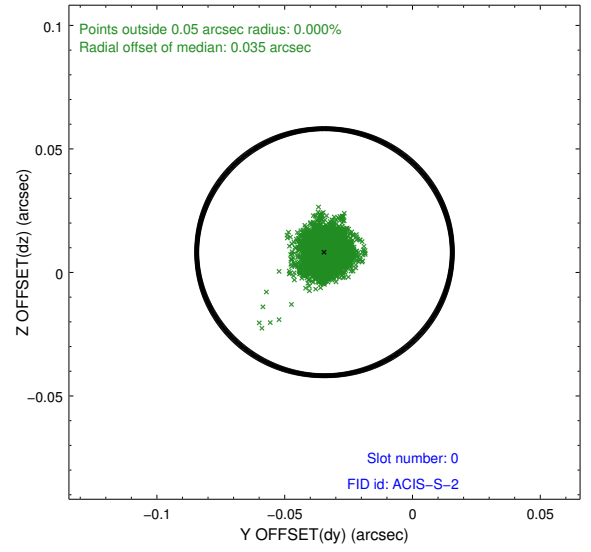
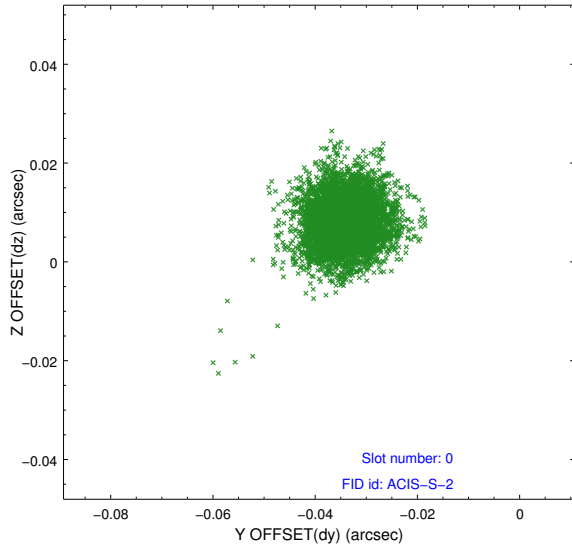


Time (s)

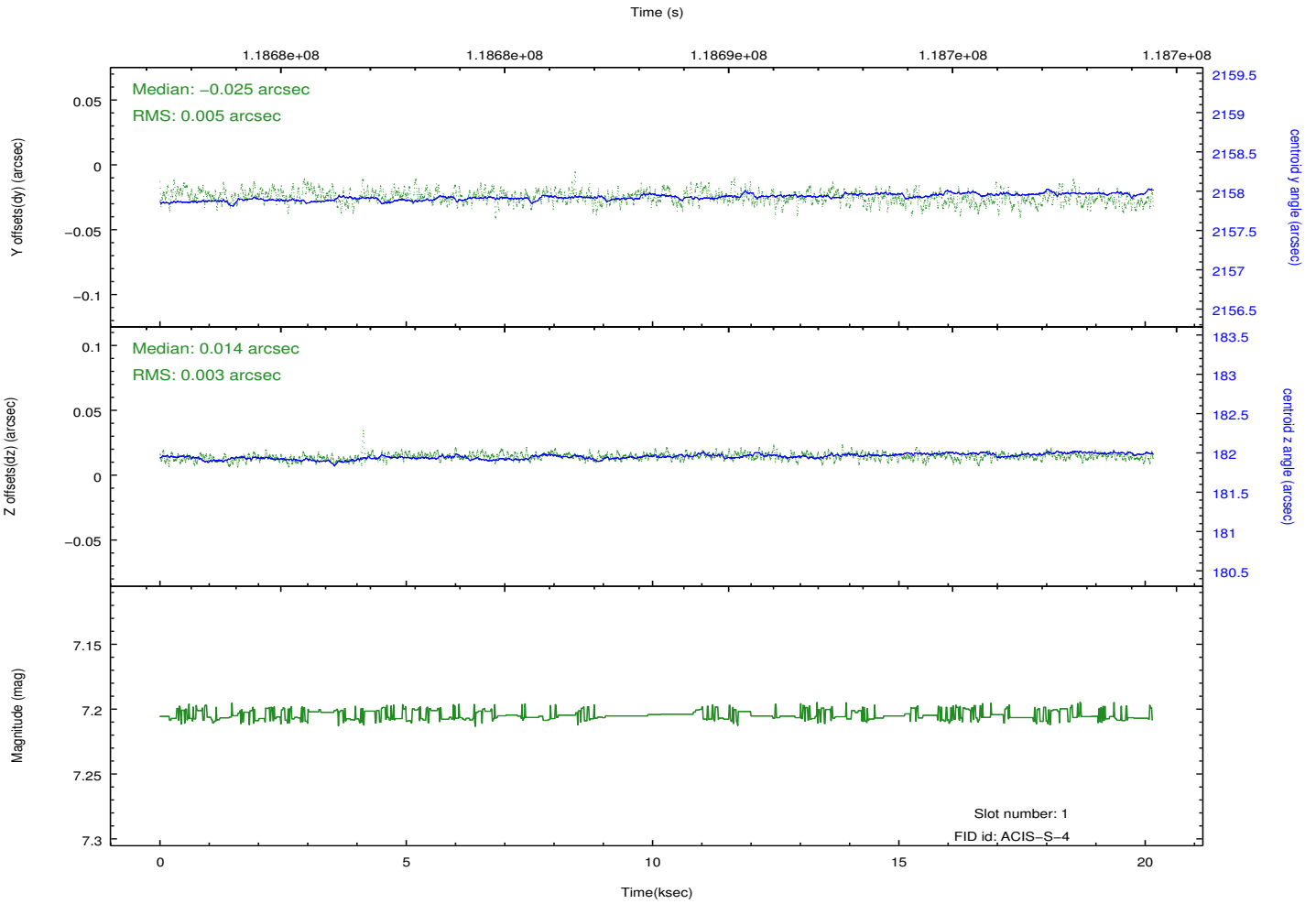
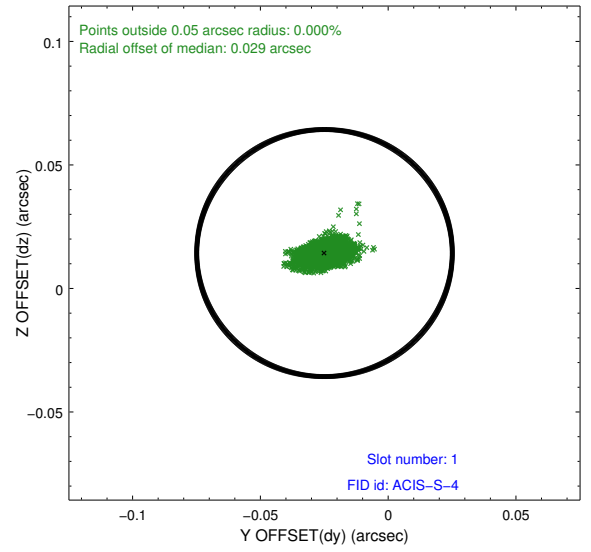
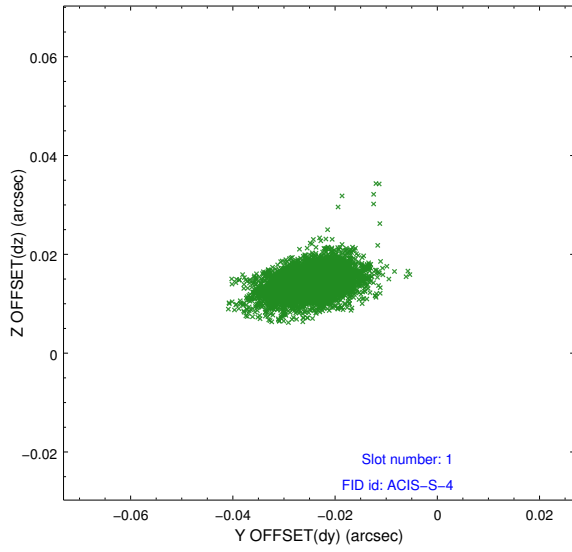


2.5 FID Slots

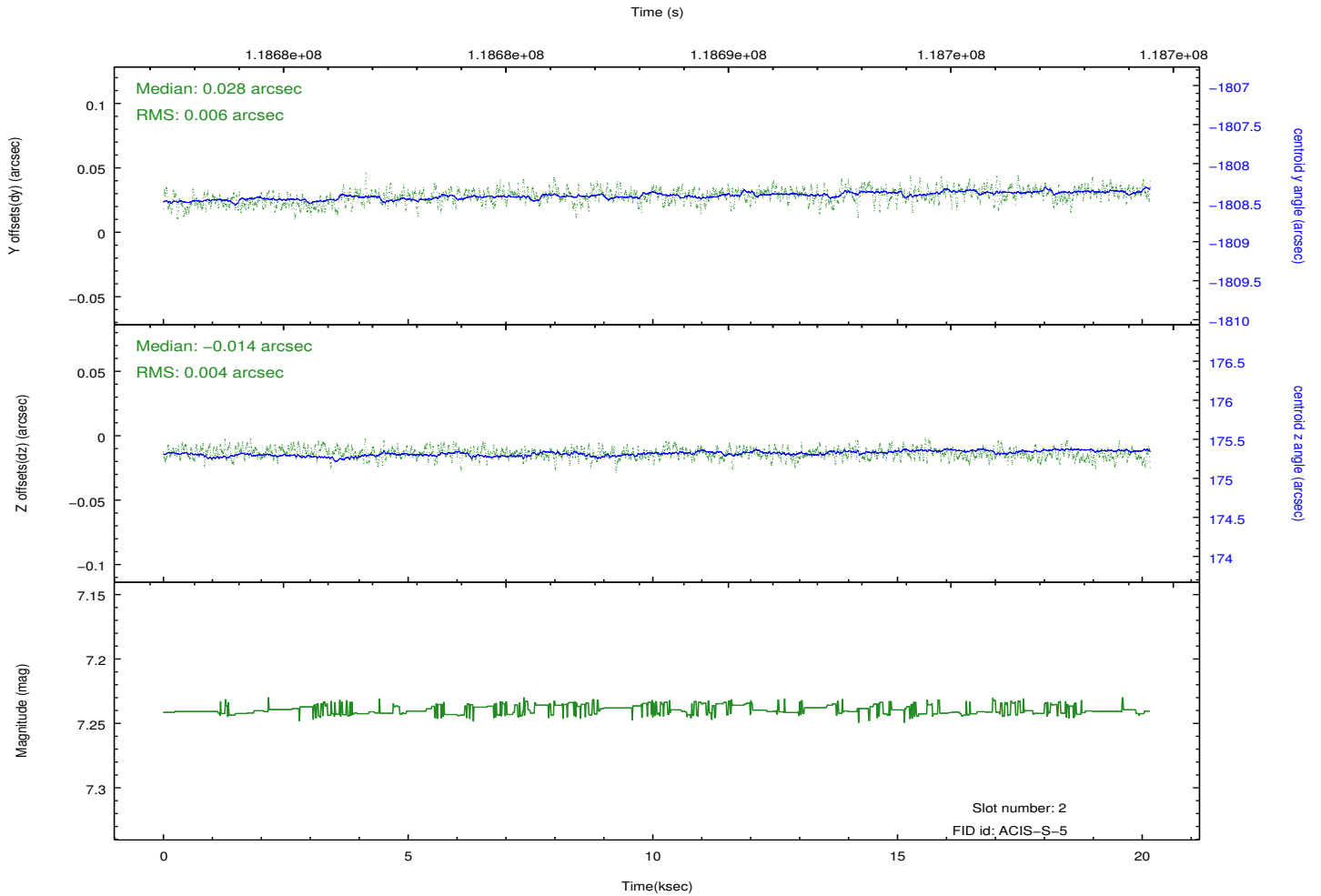
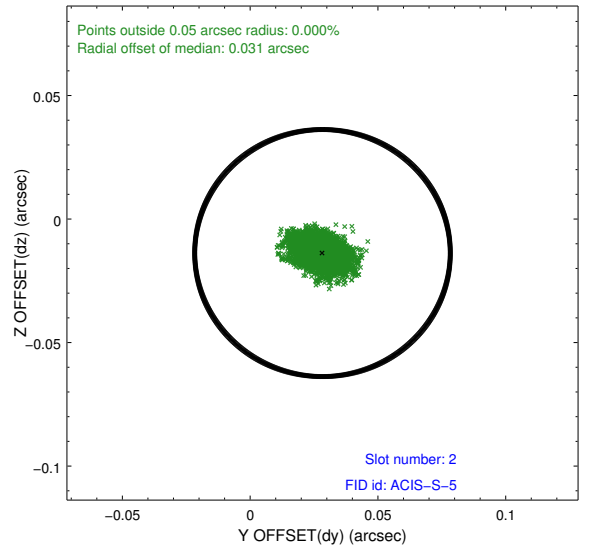
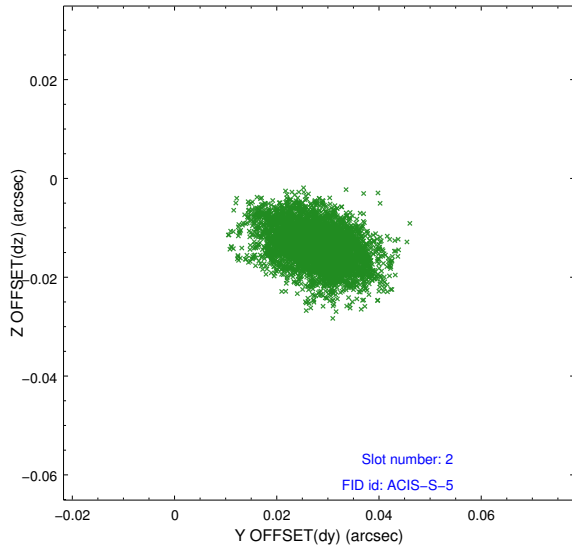
2.5.1 Slot 0



2.5.2 Slot 1



2.5.3 Slot 2



A Summary

A.1 Status

V&V Scientist	Jen Lauer
V&V Date (YYYY-MM-DD)	2012.09.27
V&V Edition	1
V&V Disposition and Status	OK
V&V Charge Time	20.149

A.2 Comments