

# V&V Reference Report

## L2 ASCDS Version : 8.4.5

Observation 2406 - L2 Version 3  
Chandra X-Ray Center

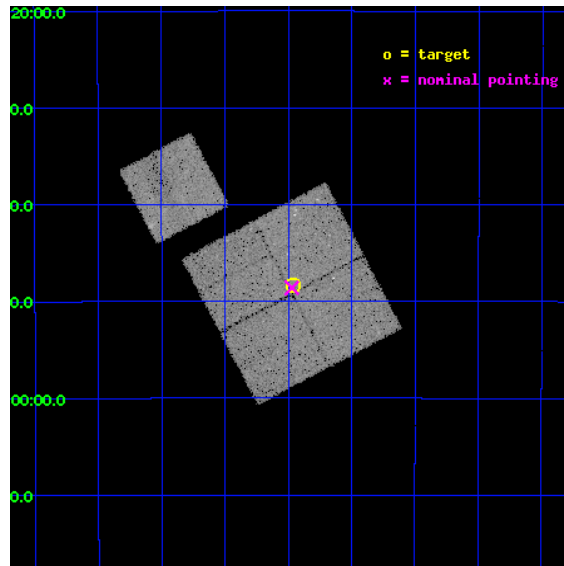
L2 Processing Date : Sep 4 2012

## Contents

<b>1</b>	<b>Front</b>	<b>2</b>
<b>2</b>	<b>OBI</b>	<b>3</b>
2.1	OBI . . . . .	3
2.1.1	Images . . . . .	3
2.1.2	Bias . . . . .	3
2.1.3	Parameters . . . . .	4
2.1.4	Events . . . . .	4
2.2	Compared Parameters . . . . .	5
2.3	Aspect . . . . .	6
2.4	Star Slots . . . . .	9
2.4.1	Slot 3 . . . . .	9
2.4.2	Slot 4 . . . . .	10
2.4.3	Slot 5 . . . . .	11
2.4.4	Slot 6 . . . . .	12
2.4.5	Slot 7 . . . . .	13
2.5	FID Slots . . . . .	14
2.5.1	Slot 0 . . . . .	14
2.5.2	Slot 1 . . . . .	15
2.5.3	Slot 2 . . . . .	16
<b>A</b>	<b>Summary</b>	<b>17</b>
A.1	Status . . . . .	17
A.2	Comments . . . . .	17

# 1 Front

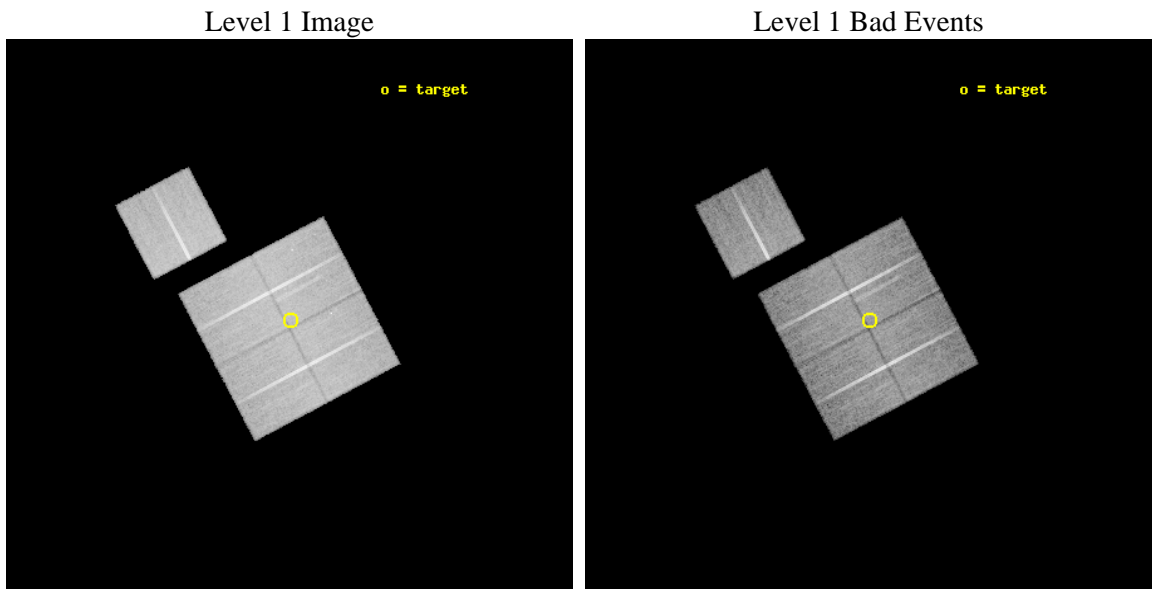
seq_num	900066	Sequence number
obs_id	2406	Observation id
title	AN ULTRADEEP SURVEY IN THE CHANDRA DEEP FIELD SOUTH	Proposal title
observer	PROF. RICCARDO GIACCONI	Principal investigator
object	CDFS	Source name
dtycycle	0	&#160
cycle	P	events from which exps? Prim/Second/Both
ra_targ	53.114583	Observer's specified target RA [deg]
dec_targ	-27.806389	Observer's specified target Dec [deg]
ra_nom	53.118054317323	Nominal RA [deg]
dec_nom	-27.810127857528	Nominal Dec [deg]
roll_nom	332.17993216312	Nominal Roll [deg]
revision	3	Processing version of data
ontime	30075.423585966	Sum of GTIs [s]
livetime	29682.466035611	Livetime [s]
ontime0	30075.300465971	Sum of GTIs [s]
ontime1	30075.34150596	Sum of GTIs [s]
ontime2	30075.382545963	Sum of GTIs [s]
ontime3	30075.423585966	Sum of GTIs [s]
ontime6	30075.259425968	Sum of GTIs [s]
l2events	89387	Number of level 2 events



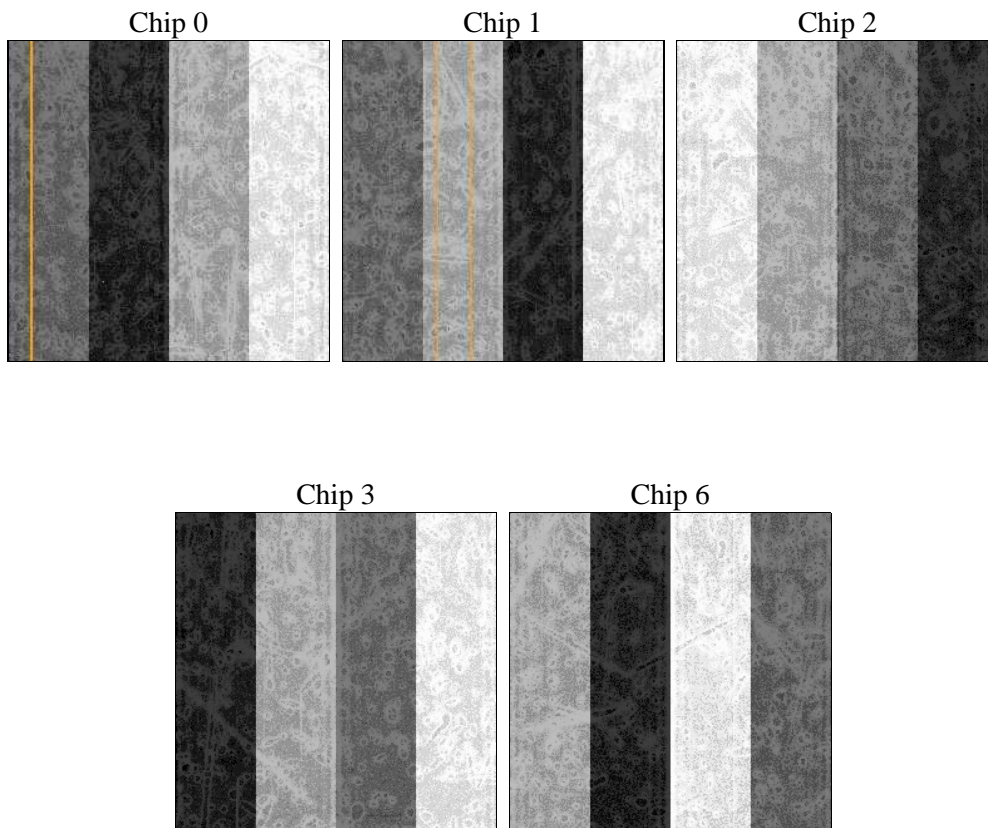
## 2 OBI

### 2.1 OBI

#### 2.1.1 Images



#### 2.1.2 Bias



### 2.1.3 Parameters

obi_num	0	Obi number	sched_exp_time	30000.000000	[s] Scheduled observation exposure time
ascdsver	8.4.5	Processing system revision	ontime	30075.423585966	Sum of GTIs [s]
caldbver	4.5.1.1	&#160	ontime0	30075.300465971	Sum of GTIs [s]
date	2012-09-04T07:18:03	Date and time of file creation	ontime1	30075.34150596	Sum of GTIs [s]
revision	3	Processing version of data	ontime2	30075.382545963	Sum of GTIs [s]
			ontime3	30075.423585966	Sum of GTIs [s]
			ontime6	30075.259425968	Sum of GTIs [s]
			l1events	873252	Number of level 1 events

### 2.1.4 Events

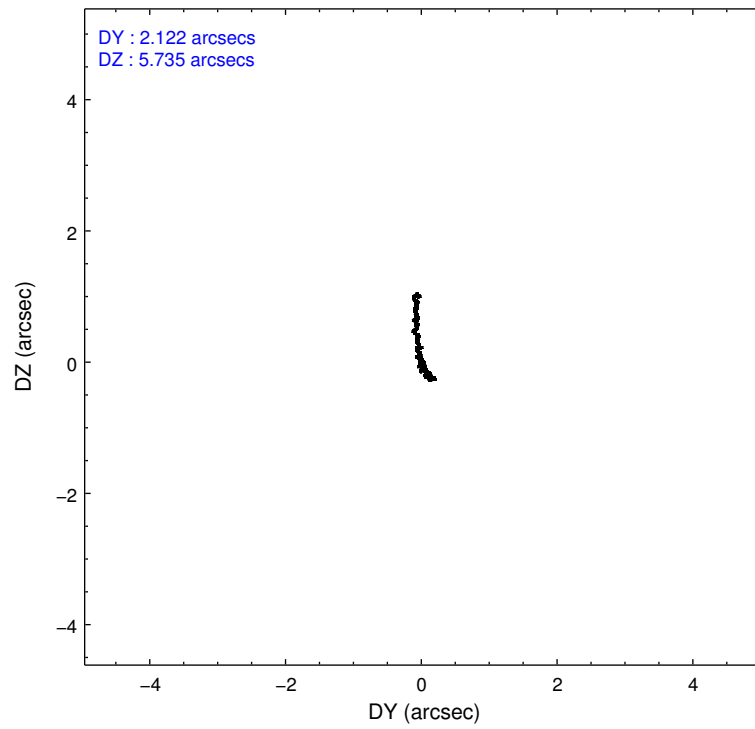
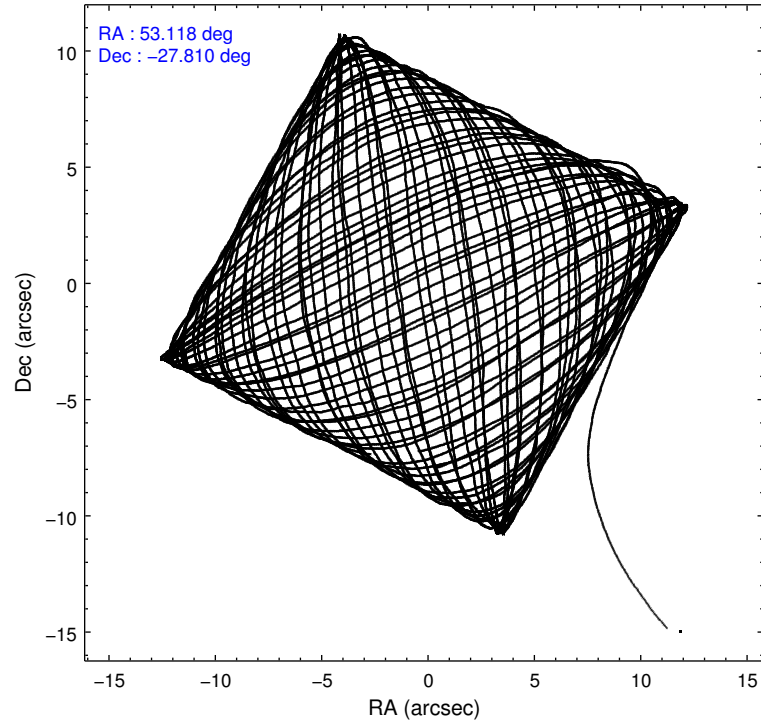
	ccd 0	ccd 1	ccd 2	ccd 3	ccd 6
level 1 events	165048	168795	178972	180677	179760
rejected events	144537	146808	158738	159899	158710
rejected %	87%	86%	88%	88%	88%

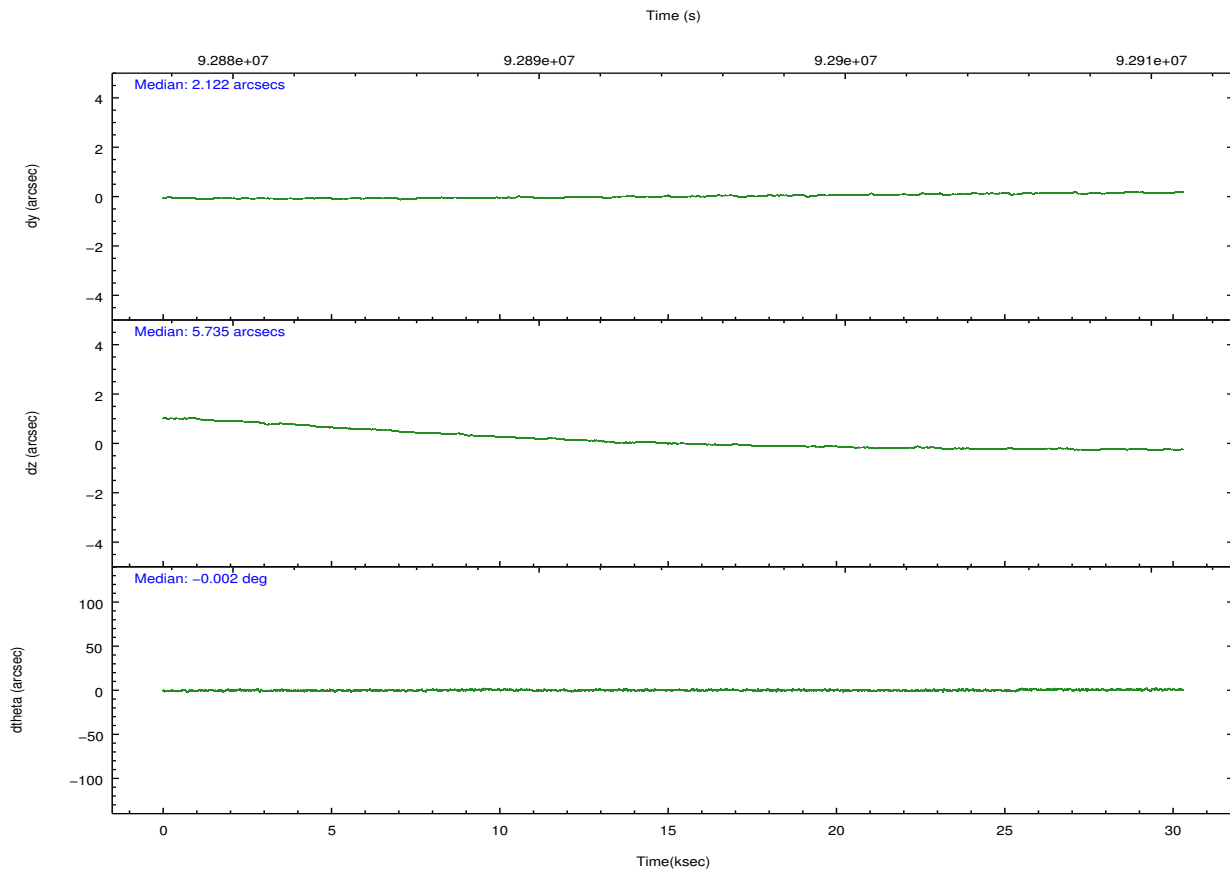
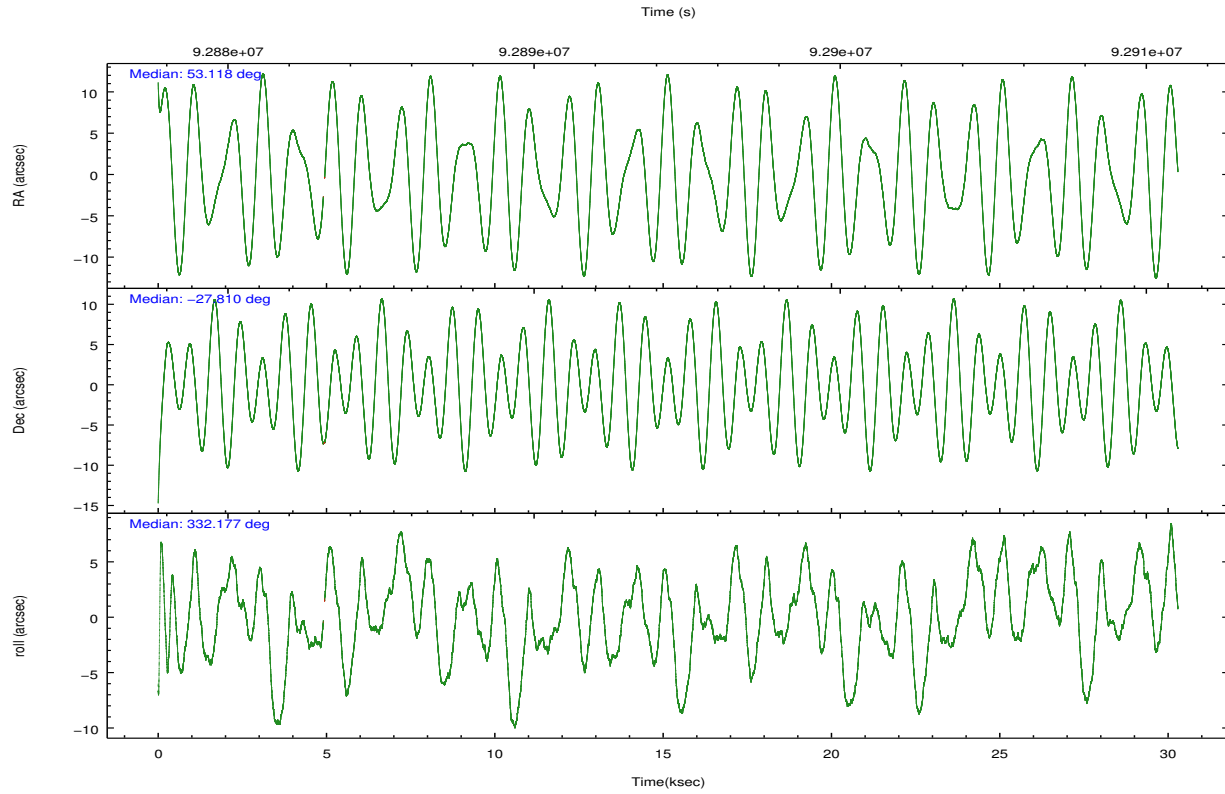
	ccd 0	ccd 1	ccd 2	ccd 3	ccd 6
grade 0 events	8598	8964	8782	9214	8827
	5%	5%	4%	5%	4%
grade 1 events	68	90	79	73	94
	0%	0%	0%	0%	0%
grade 2 events	4303	4390	4253	4108	4034
	2%	2%	2%	2%	2%
grade 3 events	2116	2372	1917	1938	2077
	1%	1%	1%	1%	1%
grade 4 events	1969	2264	1881	1935	2103
	1%	1%	1%	1%	1%
grade 5 events	6301	6914	6173	6909	7503
	3%	4%	3%	3%	4%
grade 6 events	3550	4024	3426	3608	4026
	2%	2%	1%	1%	2%
grade 7 events	138143	139777	152461	152892	151096
	83%	82%	85%	84%	84%

## 2.2 Compared Parameters

Parameter	Planned	Actual	Parameter	Planned	Actual
Instrument	ACIS	ACIS	Obspar format version number	7	7
Detector	ACIS-01236	ACIS-01236	Obspar file type	PREDICTED	ACTUAL
Grating	NONE	NONE	Obspar update status	NONE	UPDATED
Data mode	FAINT	FAINT	Number of optional ACIS chips dropped	0	0
Observation mode	POINTING	POINTING	On-chip summing requested	N	N
[deg] Pointing RA	53.086970	53.11805431732299	Subarray requested	NONE	NONE
[deg] Pointing Dec	-27.811127	-27.8101278575279	Alternating exposures requested	N	N
[deg] Pointing Roll	331.956746	332.1799321631198	[s] Primary exposure time	0.000000	3.1
[mm] SIM focus pos	-0.782348	-0.7809083437167272			
[mm] SIM defocus	0	0.001439871863259334			
[mm] SIM translation stage pos	-233.592463	-233.5874344608287			
[mm] SIM translation stage offset	0	-0.005018542100998502			
[s] Observation start time (MET)	92879524.184000	92878512.70679399			
Observation start date	2000-12-10T23:51:00	2000-12-10T23:35:12			
[s] Observation end time (MET)	92909524.184000	92909657.332985			
Observation end date	2000-12-11T08:11:00	2000-12-11T08:14:17			
Read mode	TIMED	TIMED			

## 2.3 Aspect



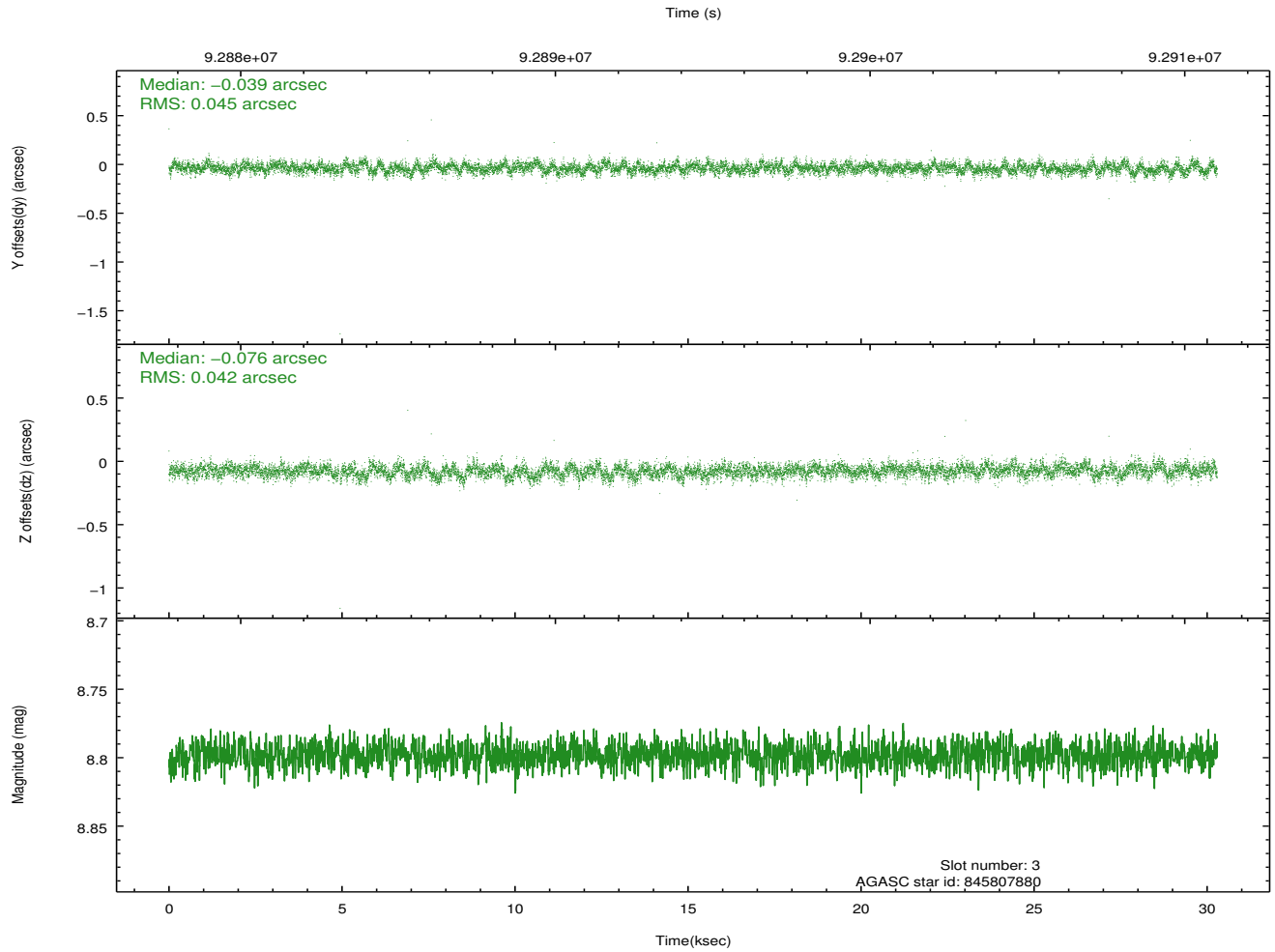
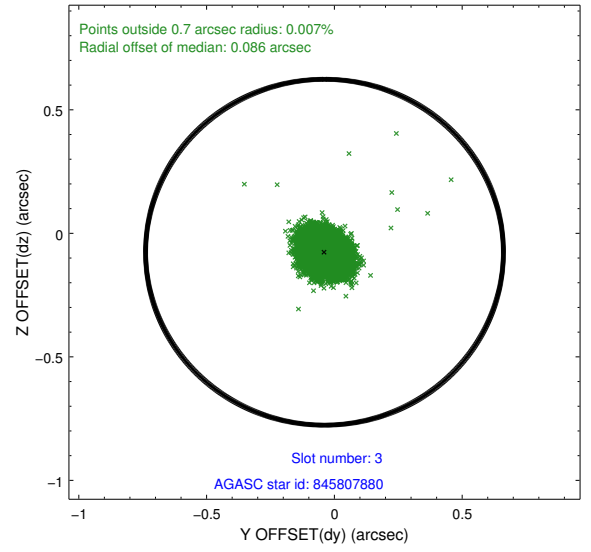
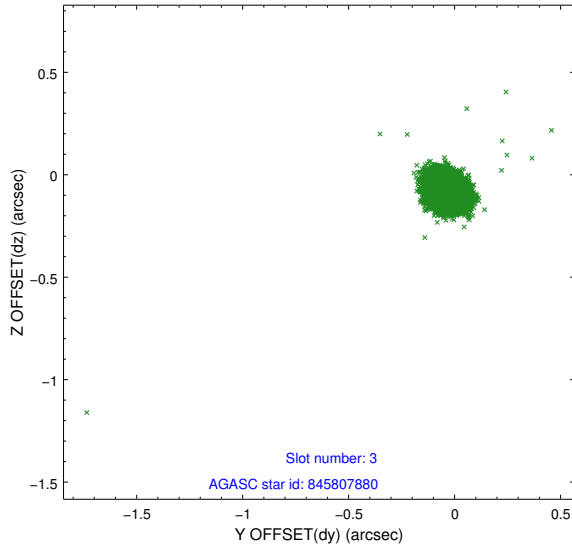


### Slot Statistics

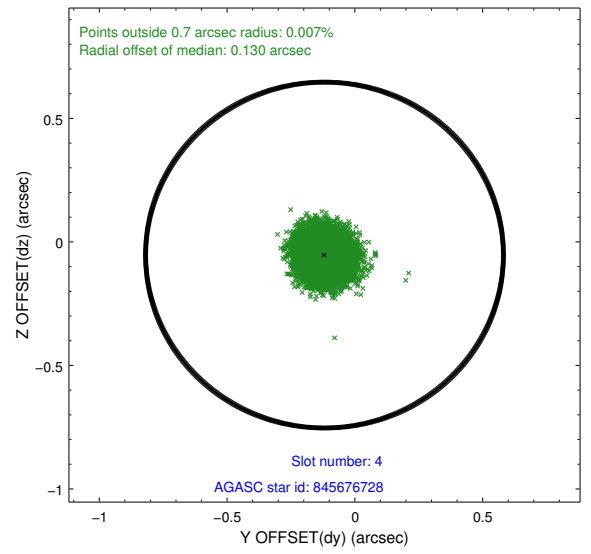
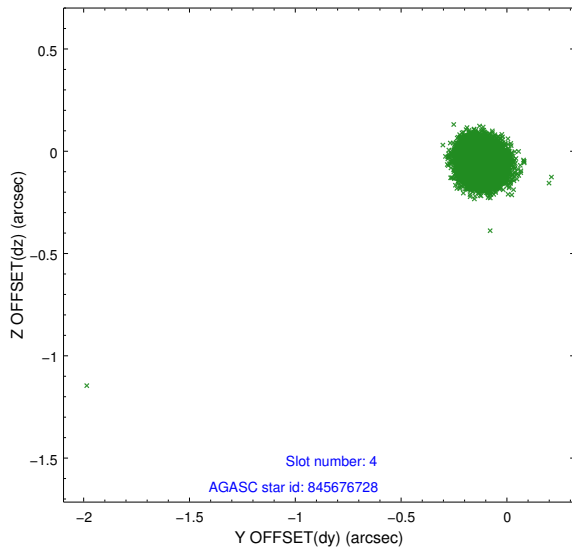
slot	status	id	mag	n_pts	med_dy	med_dz	dr1	dr2	ra	dec	mean_y	mean_z
0	FID	ACIS-I-2	7.16	7379	-0.032	-0.060	0.016	0.031	0.000000	0.000000	-756.52	-835.68
1	FID	ACIS-I-4	7.19	7380	-0.021	0.043	0.011	0.025	0.000000	0.000000	2157.51	1070.57
2	FID	ACIS-I-5	7.23	7380	-0.046	0.086	0.013	0.020	0.000000	0.000000	-1810.28	1068.53
3	GUIDE	845807880	8.80	14753	-0.039	-0.076	0.062	0.103	53.382027	-27.886093	955.87	202.14
4	GUIDE	845676728	9.33	14753	-0.119	-0.053	0.075	0.120	52.877179	-27.664318	-838.77	151.36
5	GUIDE	845676936	9.50	14744	-0.054	-0.039	0.078	0.130	52.843773	-27.880153	-566.03	-583.90
6	GUIDE	845808520	10.20	14746	0.101	0.028	0.153	0.263	53.575292	-27.720766	1221.95	1016.04
7	GUIDE	845808968	9.96	14743	0.111	0.136	0.140	0.230	54.016598	-27.589085	2247.35	2090.45

## 2.4 Star Slots

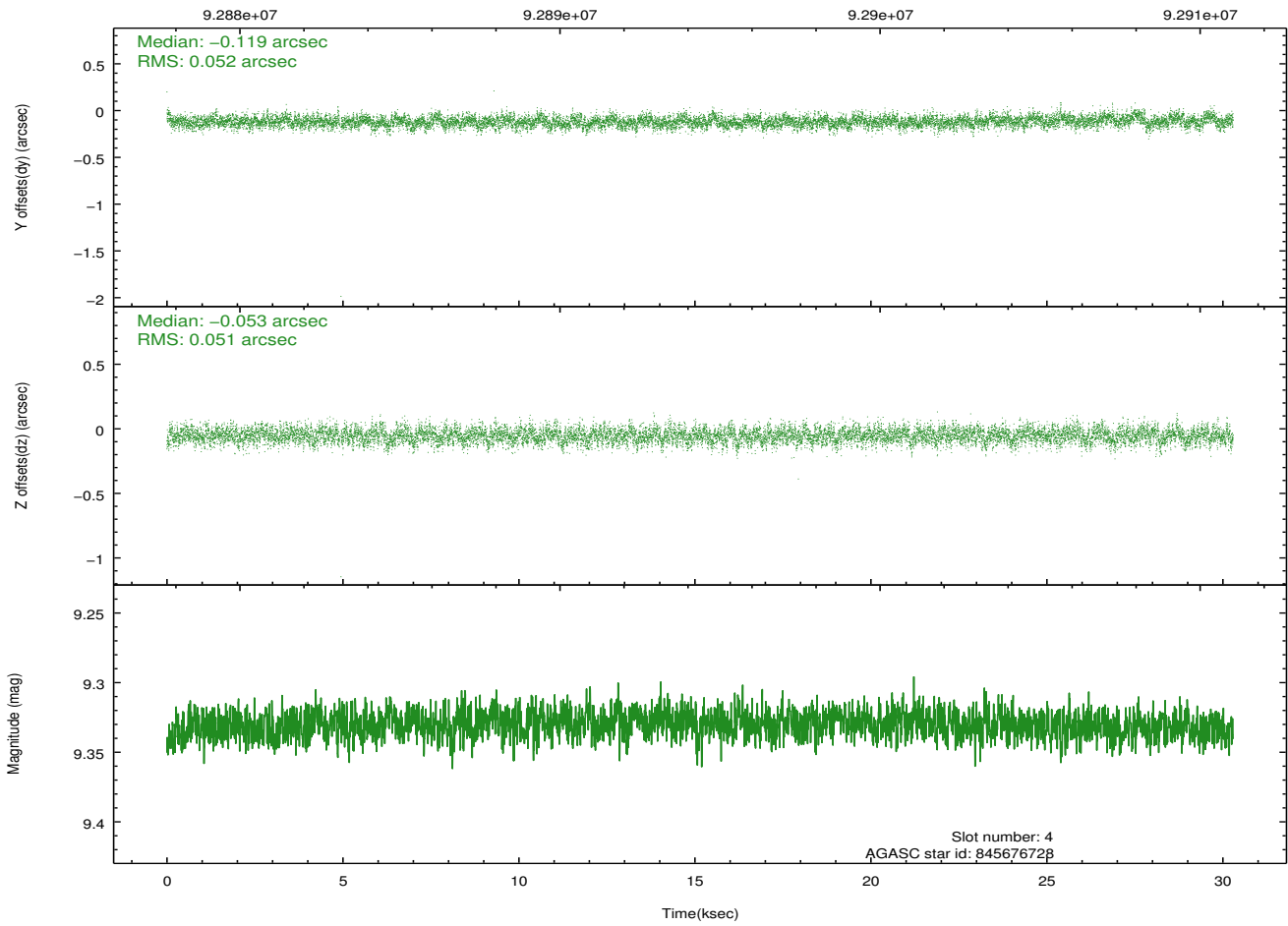
### 2.4.1 Slot 3



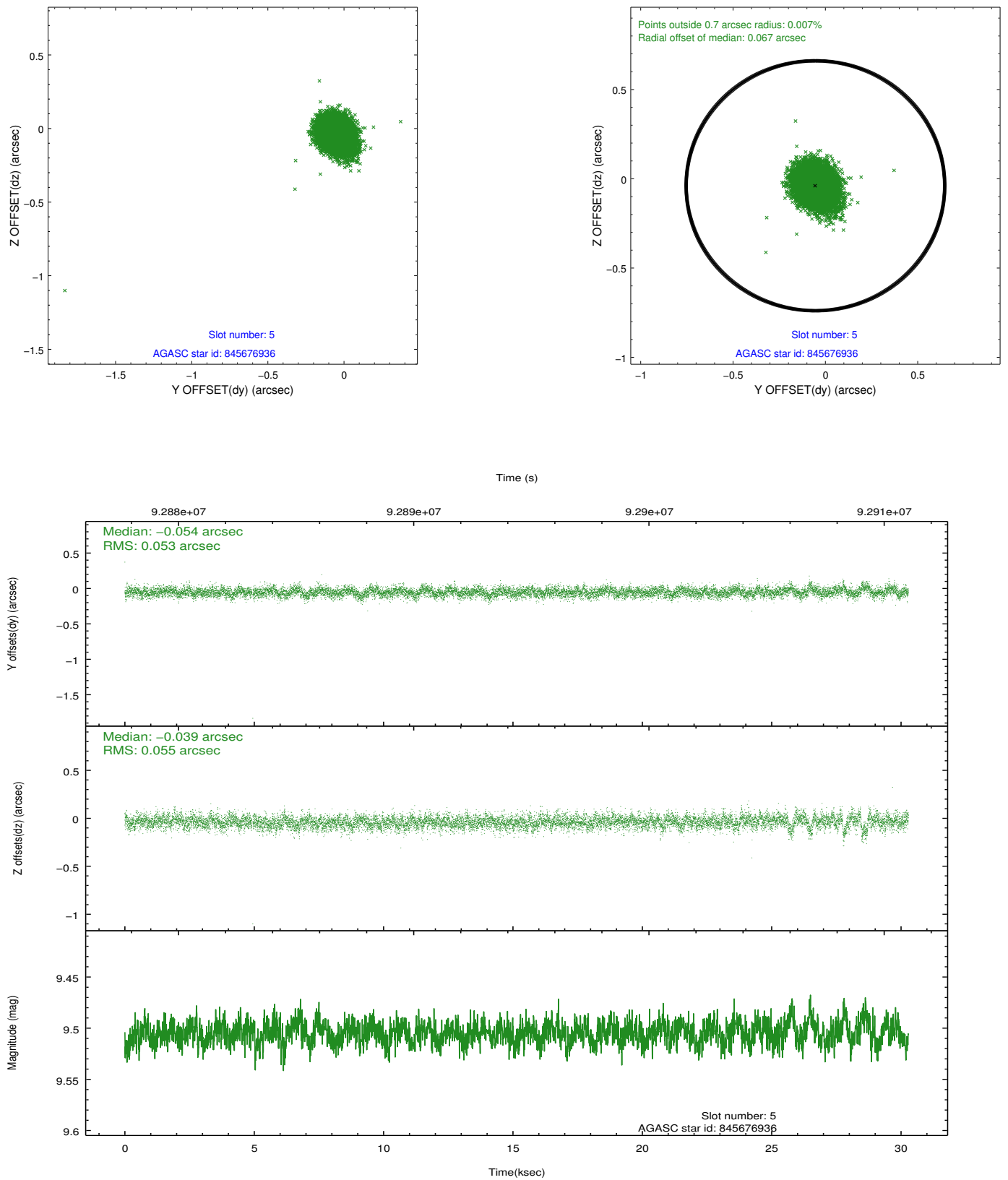
## 2.4.2 Slot 4



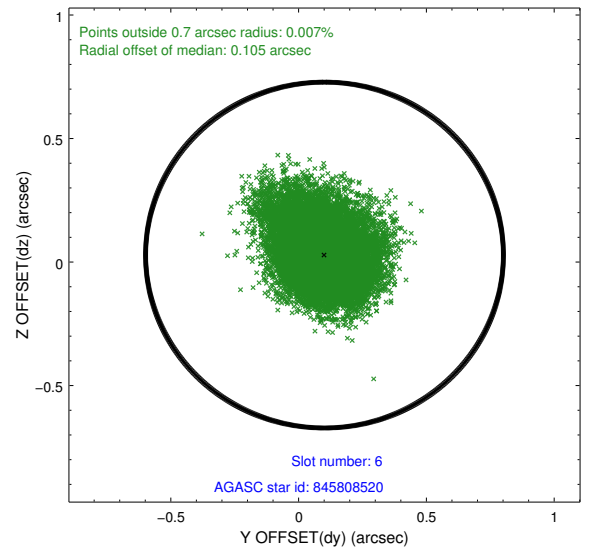
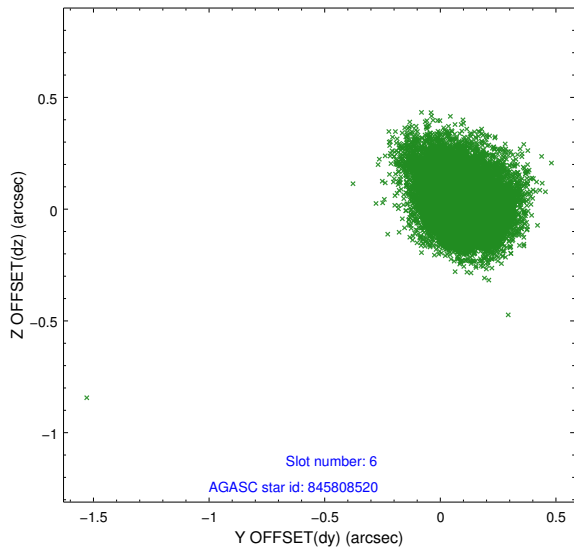
Time (s)



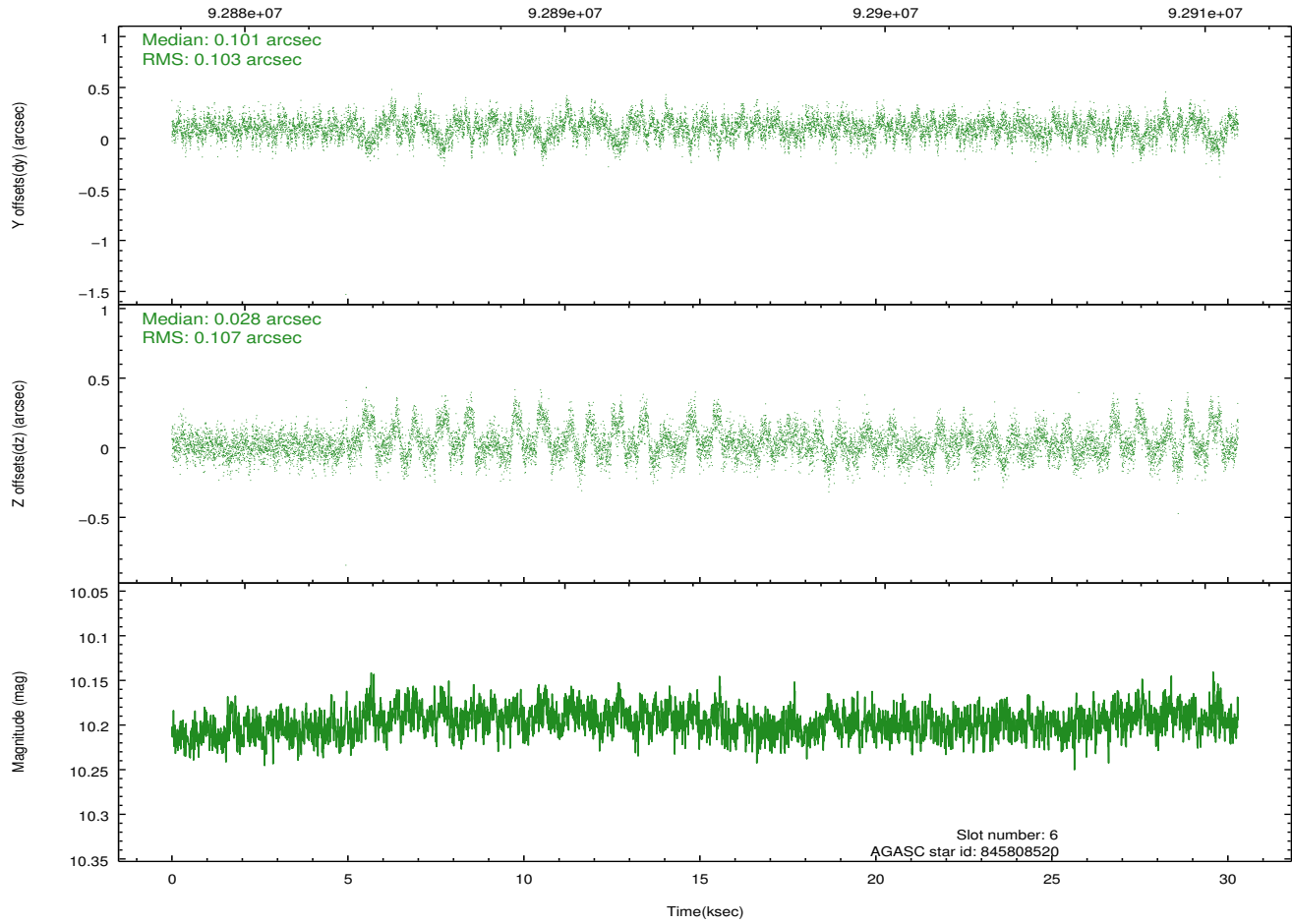
### 2.4.3 Slot 5



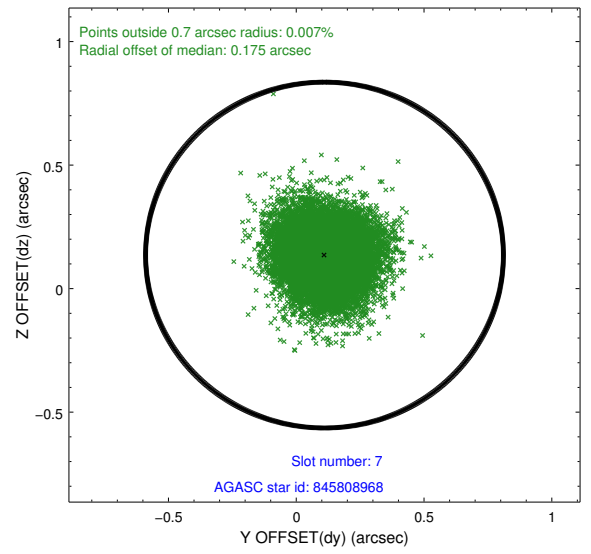
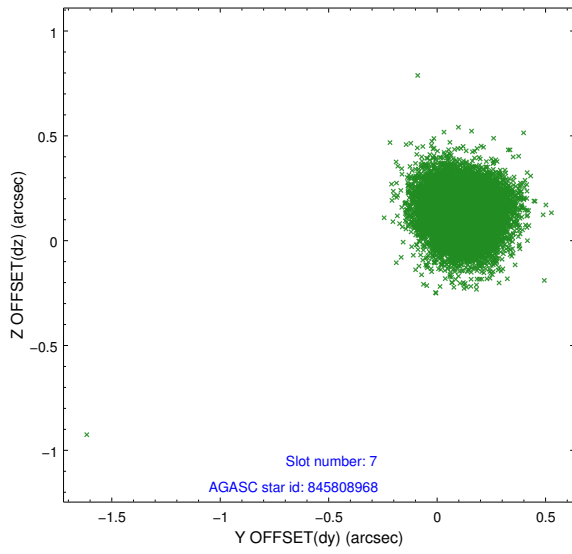
### 2.4.4 Slot 6



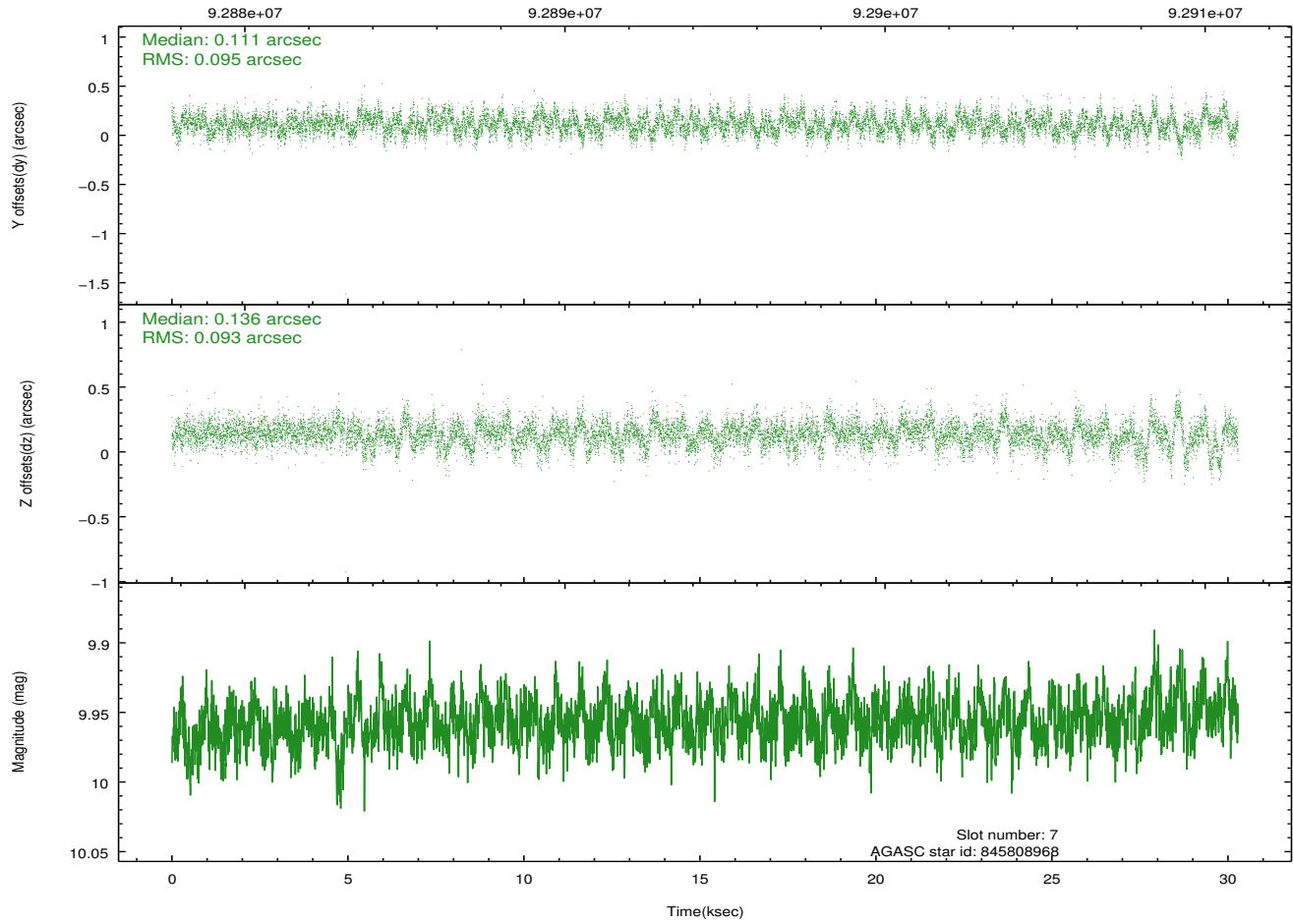
Time (s)



### 2.4.5 Slot 7

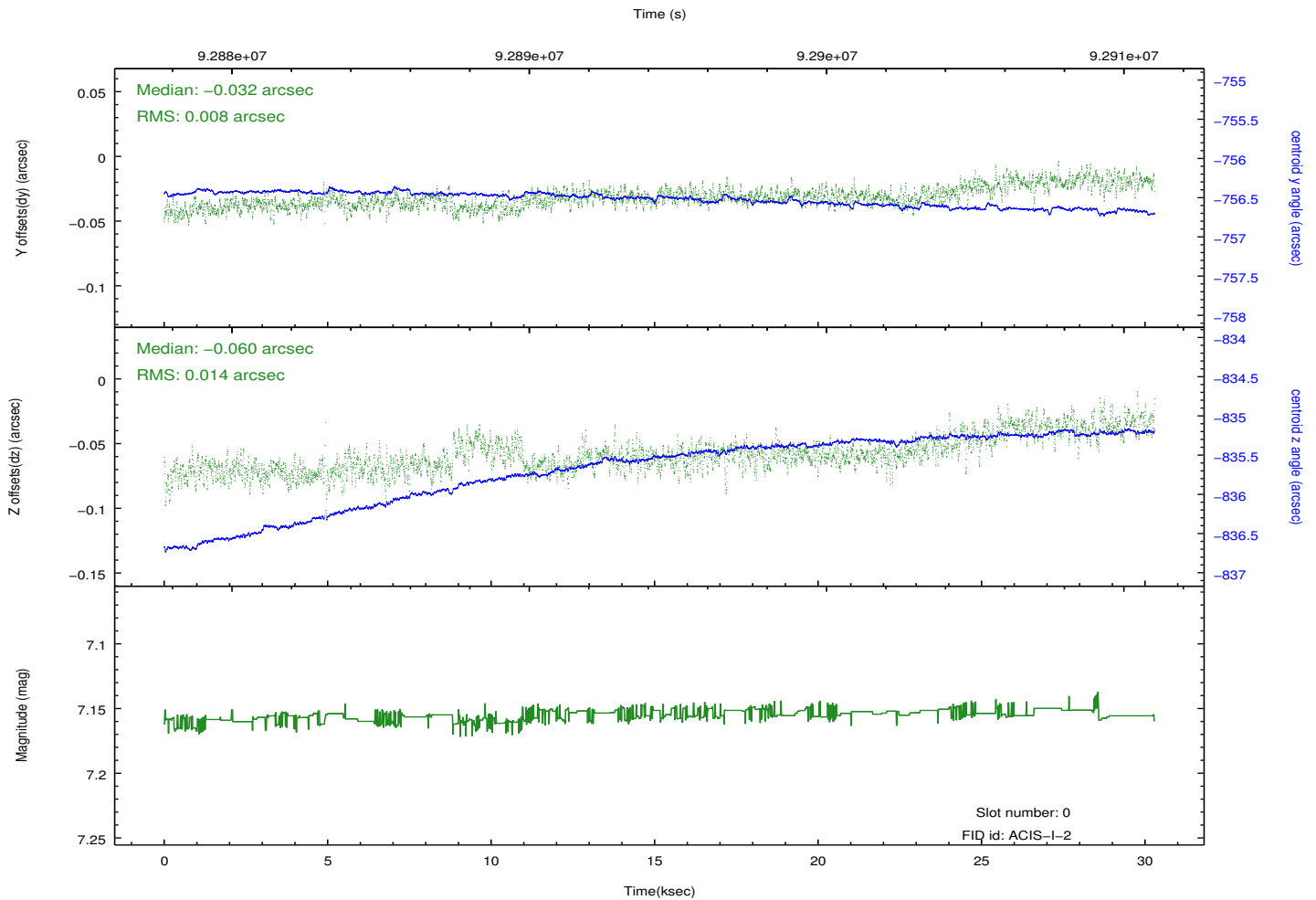
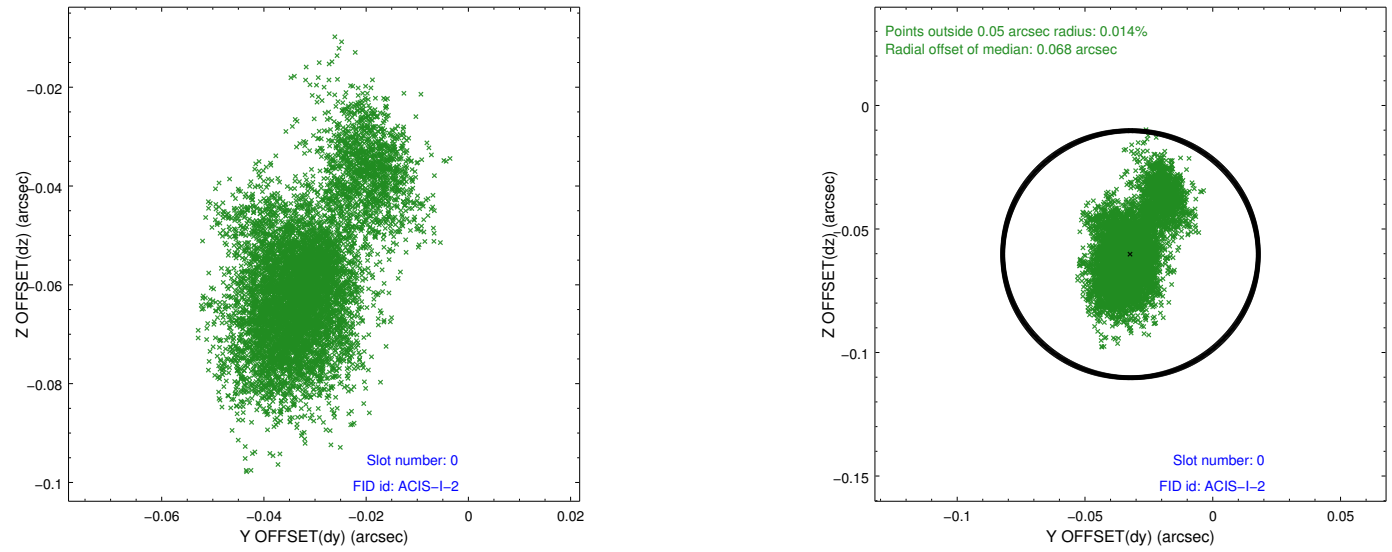


Time (s)

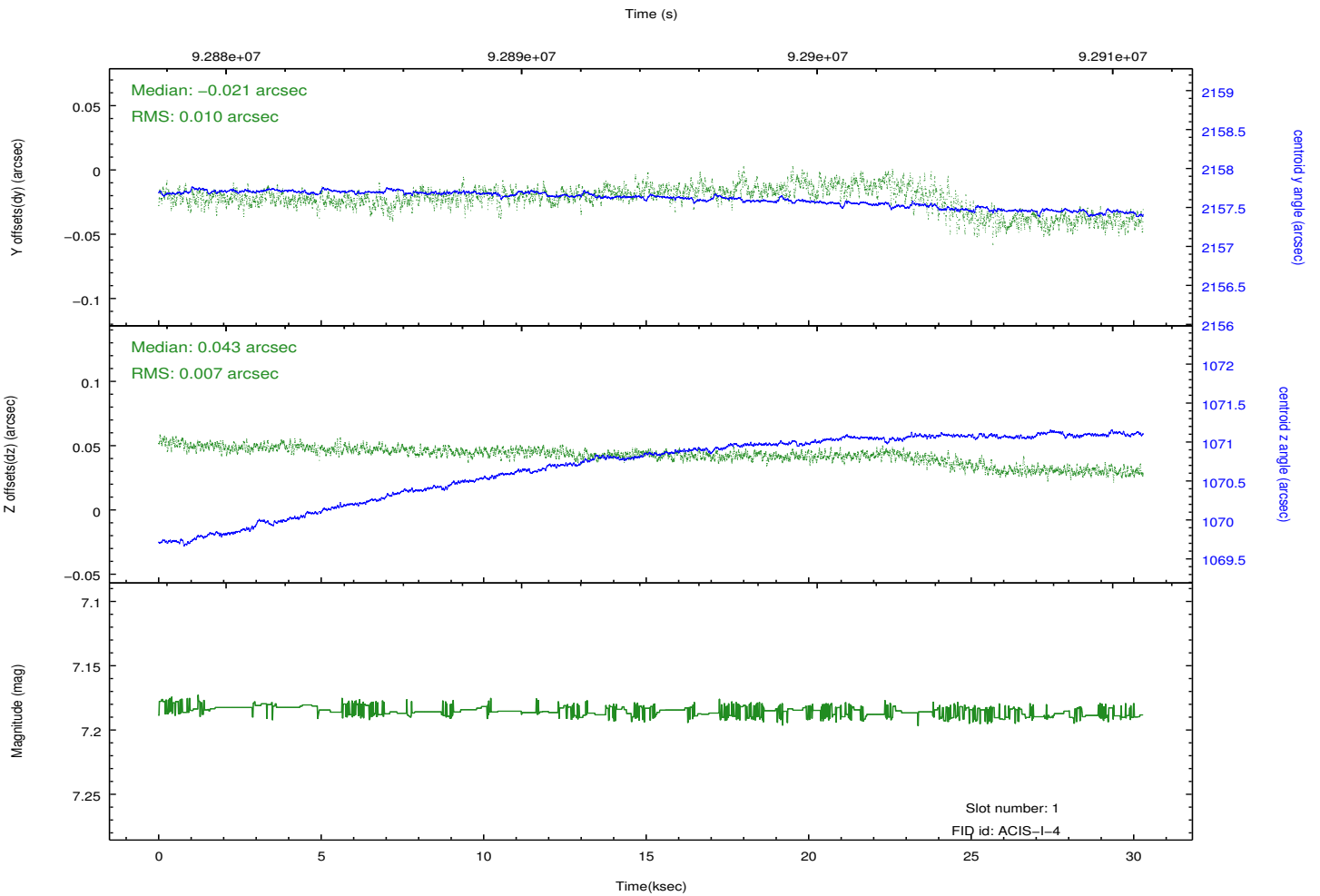
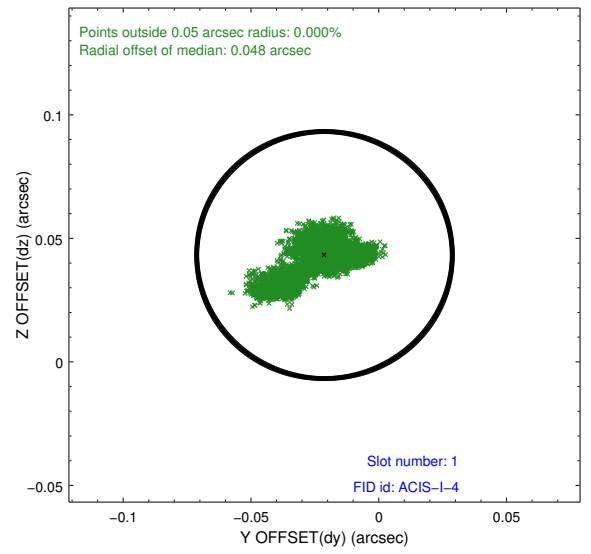
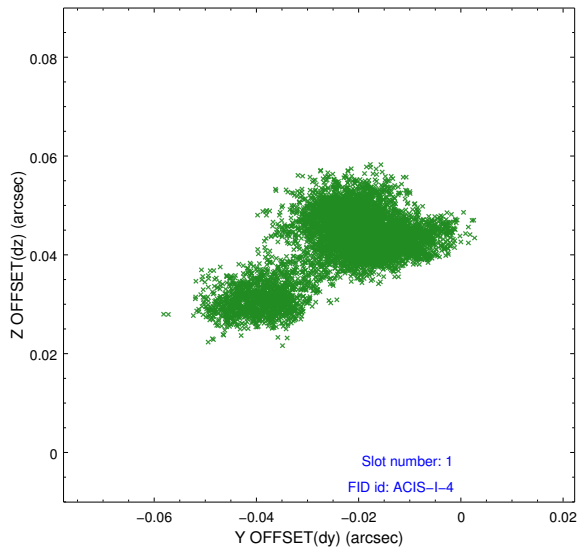


## 2.5 FID Slots

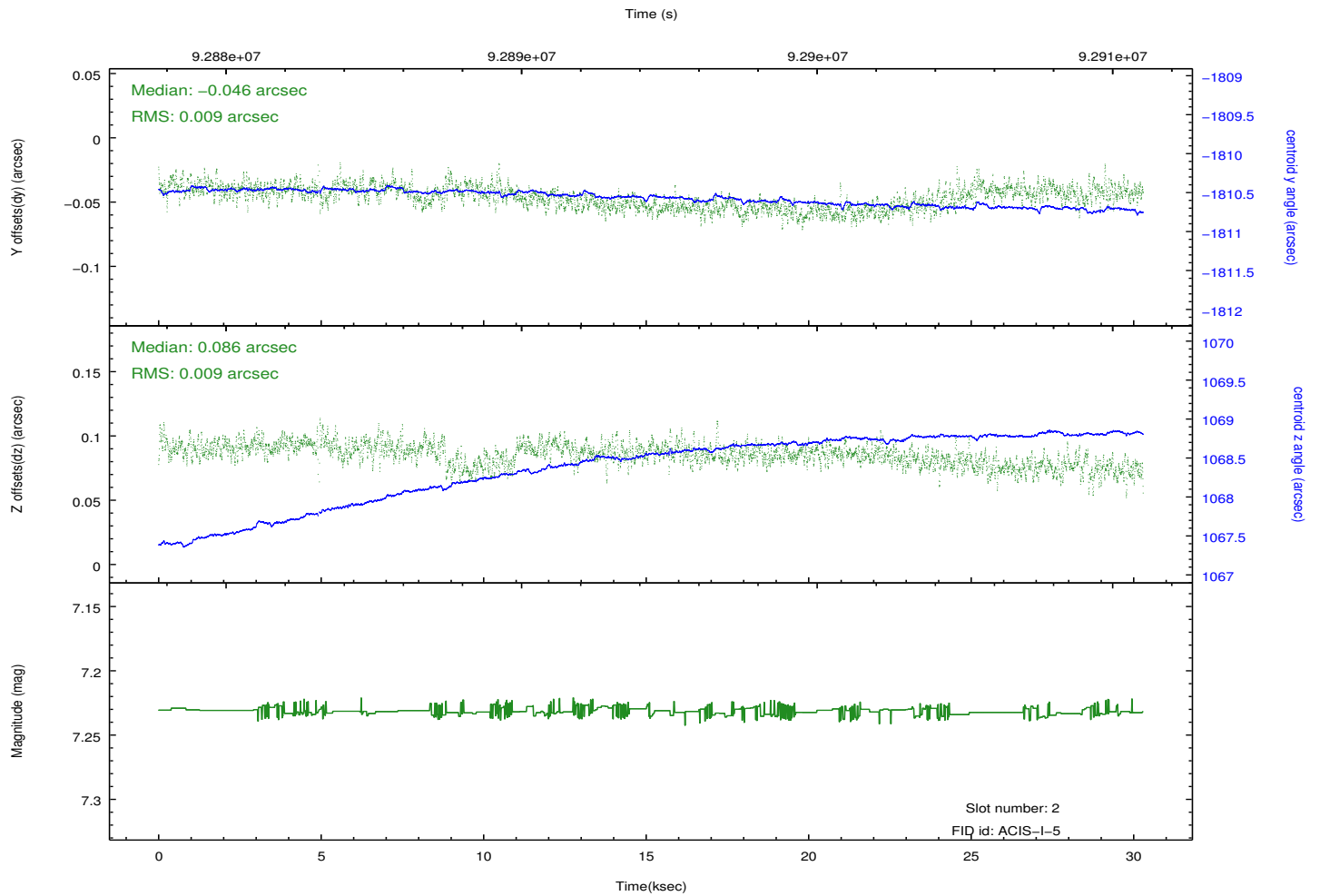
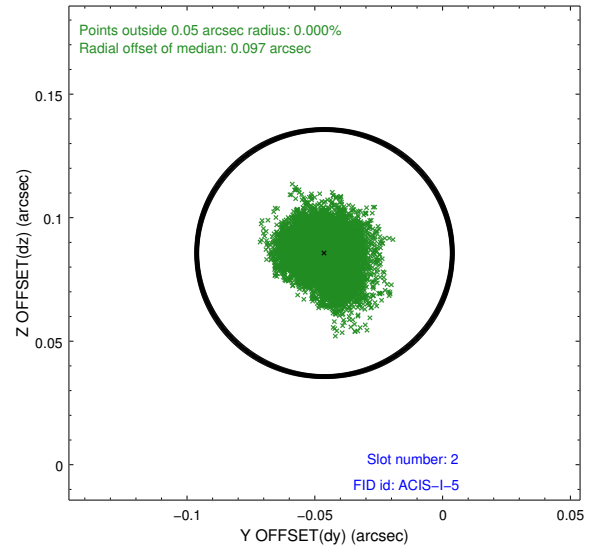
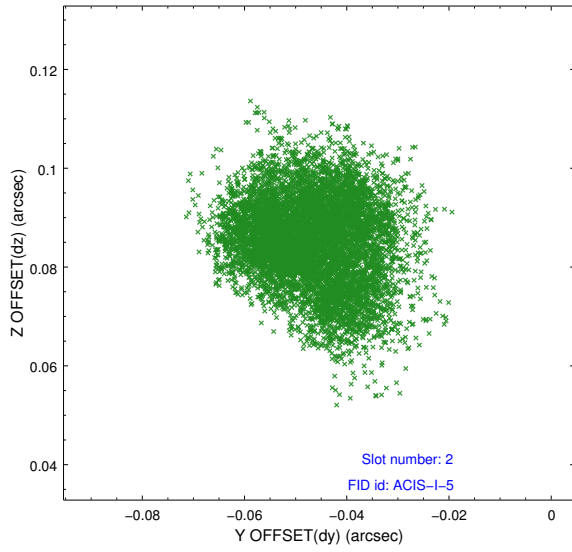
### 2.5.1 Slot 0



## 2.5.2 Slot 1



### 2.5.3 Slot 2



# A Summary

## A.1 Status

V&V Scientist	Beth Sundheim
V&V Date (YYYY-MM-DD)	2012.09.12
V&V Edition	1
V&V Disposition and Status	OK
V&V Charge Time	30.079

## A.2 Comments