

V&V Reference Report

L2 ASCDS Version : 8.4.5

Observation 2506 - L2 Version 3
Chandra X-Ray Center

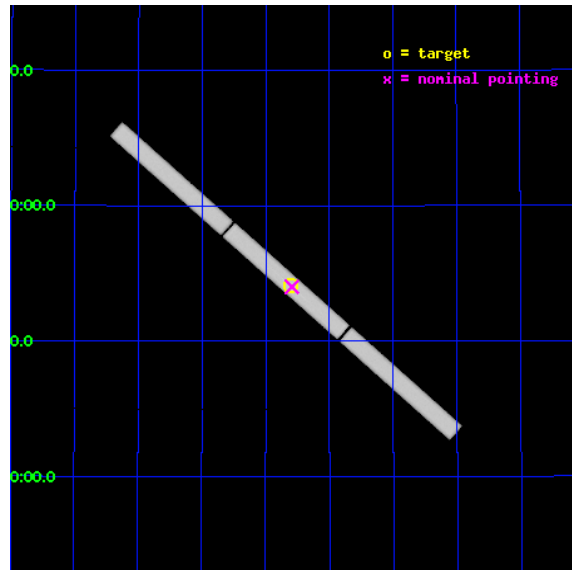
L2 Processing Date : Sep 22 2012

Contents

1	Front	2
2	OBI	3
2.1	OBI	3
2.1.1	Images	3
2.1.2	Parameters	4
2.1.3	Events	4
2.2	Compared Parameters	5
2.3	Aspect	6
2.4	Star Slots	9
2.4.1	Slot 3	9
2.4.2	Slot 4	10
2.4.3	Slot 5	11
2.4.4	Slot 6	12
2.4.5	Slot 7	13
2.5	FID Slots	14
2.5.1	Slot 0	14
2.5.2	Slot 1	15
2.5.3	Slot 2	16
3	Gratings	17
3.1	LETG Arm	17
A	Summary	19
A.1	Status	19
A.2	Comments	19

1 Front

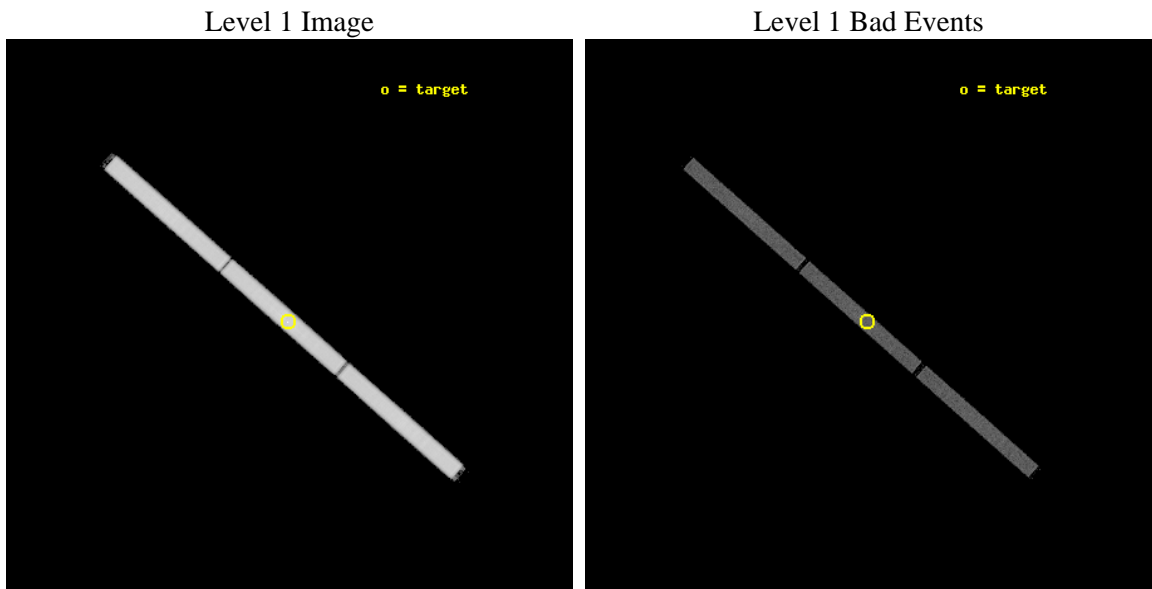
seq_num	300059	Sequence number
obs_id	2506	Observation id
title	WZ SGE IN OUTBURST TEN YEARS EARLY: I THE EUV EMISSION	Proposal ti
observer	Dr Peter Wheatley	Principal investigator
object	WZ SGE	Source name
ra_targ	301.900833	Observer's specified target RA [deg]
dec_targ	17.704167	Observer's specified target Dec [deg]
ra_nom	301.89701126625	Nominal RA [deg]
dec_nom	17.701122761896	Nominal Dec [deg]
roll_nom	221.36274384749	Nominal Roll [deg]
revision	3	Processing version of data
ontime	19983.657037631	[s]
livetime	19841.216007081	Ontime multiplied by DTCOR
l2events	1135672	Number of level 2 events



2 OBI

2.1 OBI

2.1.1 Images



2.1.2 Parameters

obi_num	1	Obi number	sched_exp_time	20000.000000	[s] Scheduled observation exposure time
ascdsver	8.4.5	Processing system revision	ontime	19983.657037631	[s]
caldbver	4.5.1.1	 	l1events	1637823	Number of level 1 events
date	2012-09-22T07:59:26	Date and time of file creation			
revision	3	Processing version of data			

2.1.3 Events

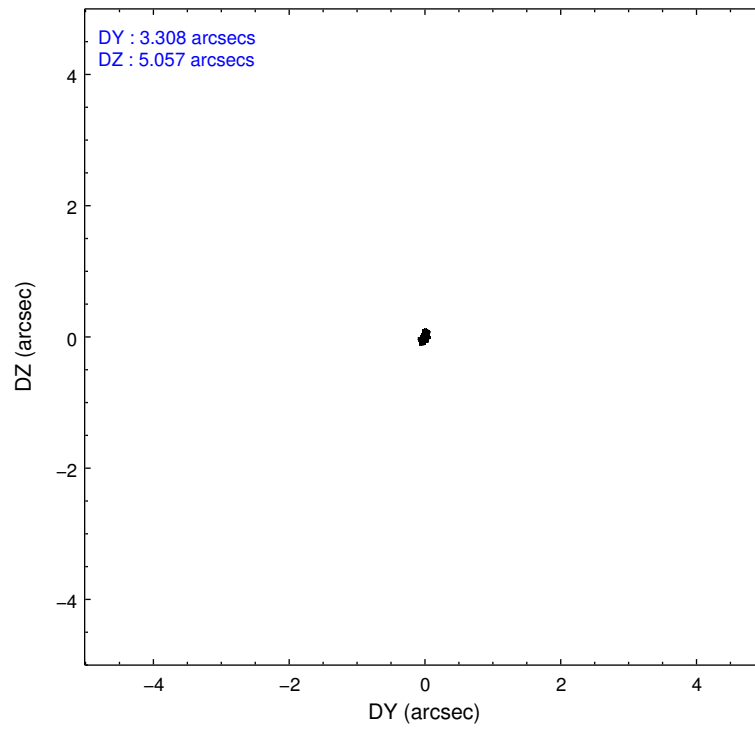
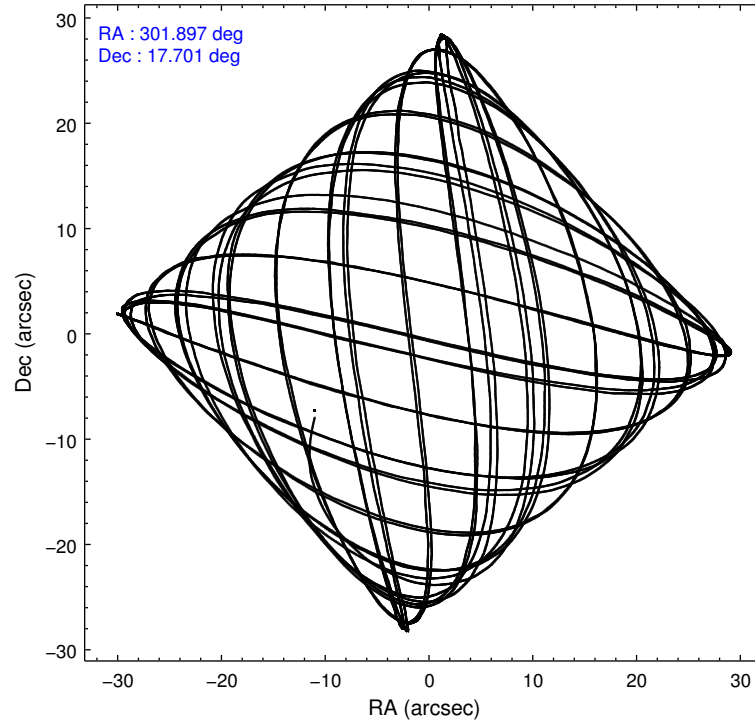
Level 1 Events

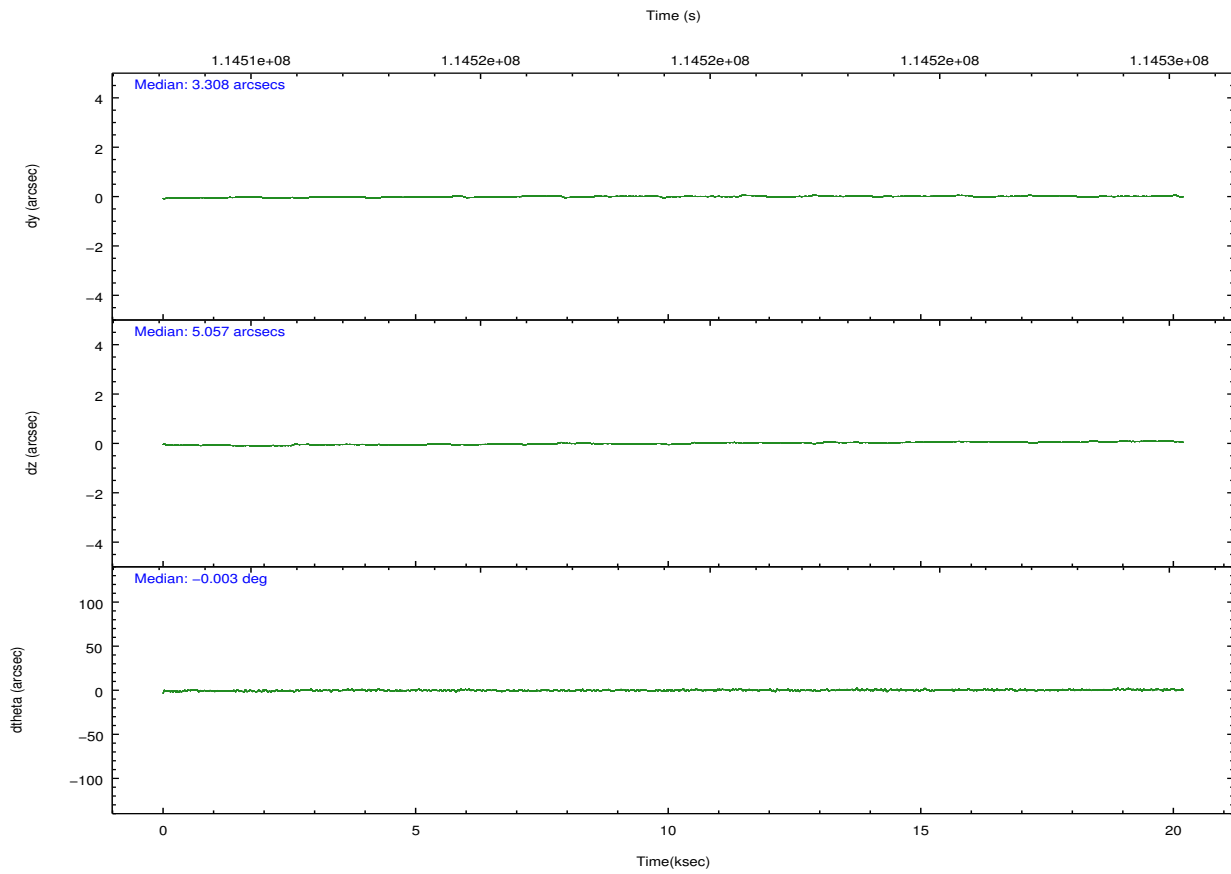
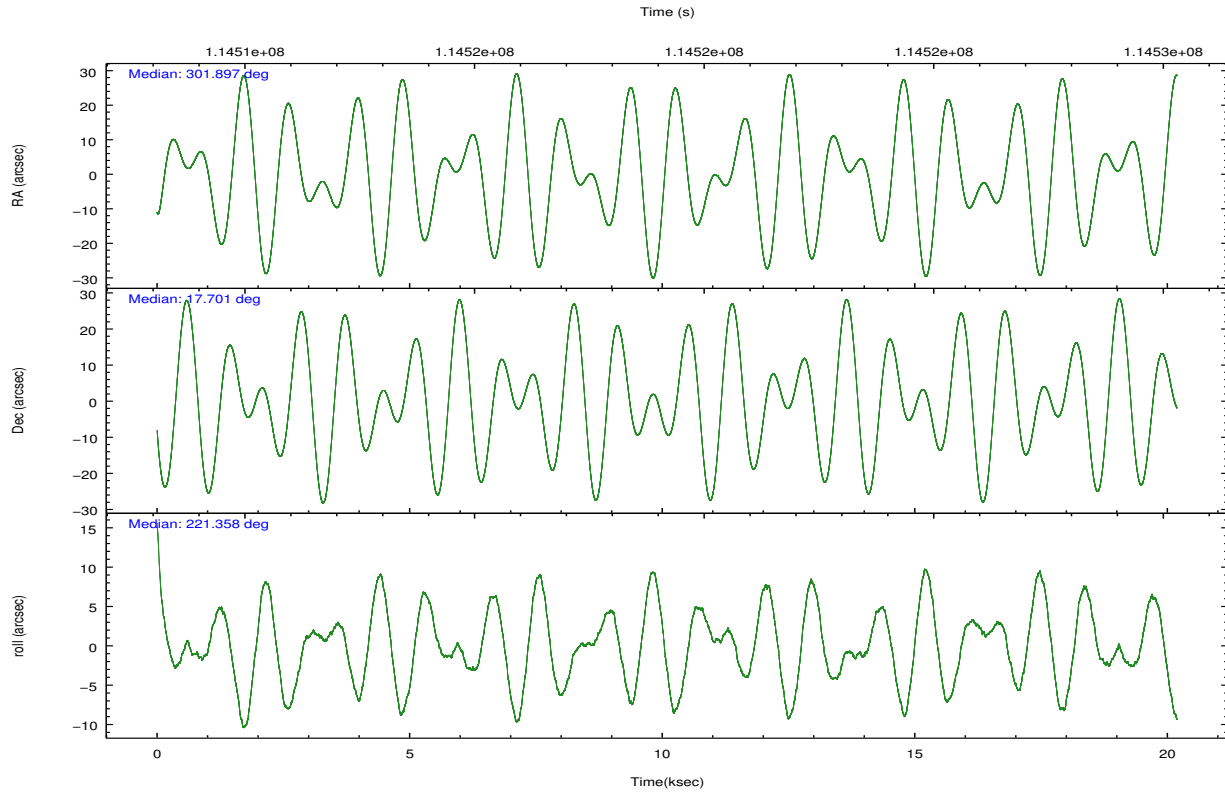
	segment 1	segment 2	segment 3
level 1 events	547739	541753	548331
rejected events	25544	25088	25114
rejected %	4%	4%	4%

2.2 Compared Parameters

Parameter	Planned	Actual	Parameter	Planned	Actual
Instrument	HRC	HRC	Obspar format version number	7	7
Detector	HRC-S	HRC-S	Obspar file type	PREDICTED	ACTUAL
Grating	LETG	LETG	Obspar update status	NONE	UPDATED
Data mode	OBSERVING	OBSERVING			
Observation mode	POINTING	POINTING			
[deg] Pointing RA	301.905222	301.8970112662458			
[deg] Pointing Dec	17.728694	17.70112276189603			
[deg] Pointing Roll	221.292907	221.3627438474883			
[mm] SIM focus pos	-1.429586	-1.428180813131781			
[mm] SIM defocus	0.1037507710433287	0.1051558262725154			
[mm] SIM translation stage pos	251.455976	251.4516446784125			
[mm] SIM translation stage offset	-1	-0.9956662848578048			
[s] Observation start time (MET)	114509285.184000	114508047.14551			
Observation start date	2001-08-18T08:07:01	2001-08-18T07:47:27			
[s] Observation end time (MET)	114529285.184000	114530243.52138			
Observation end date	2001-08-18T13:40:21	2001-08-18T13:57:23			

2.3 Aspect



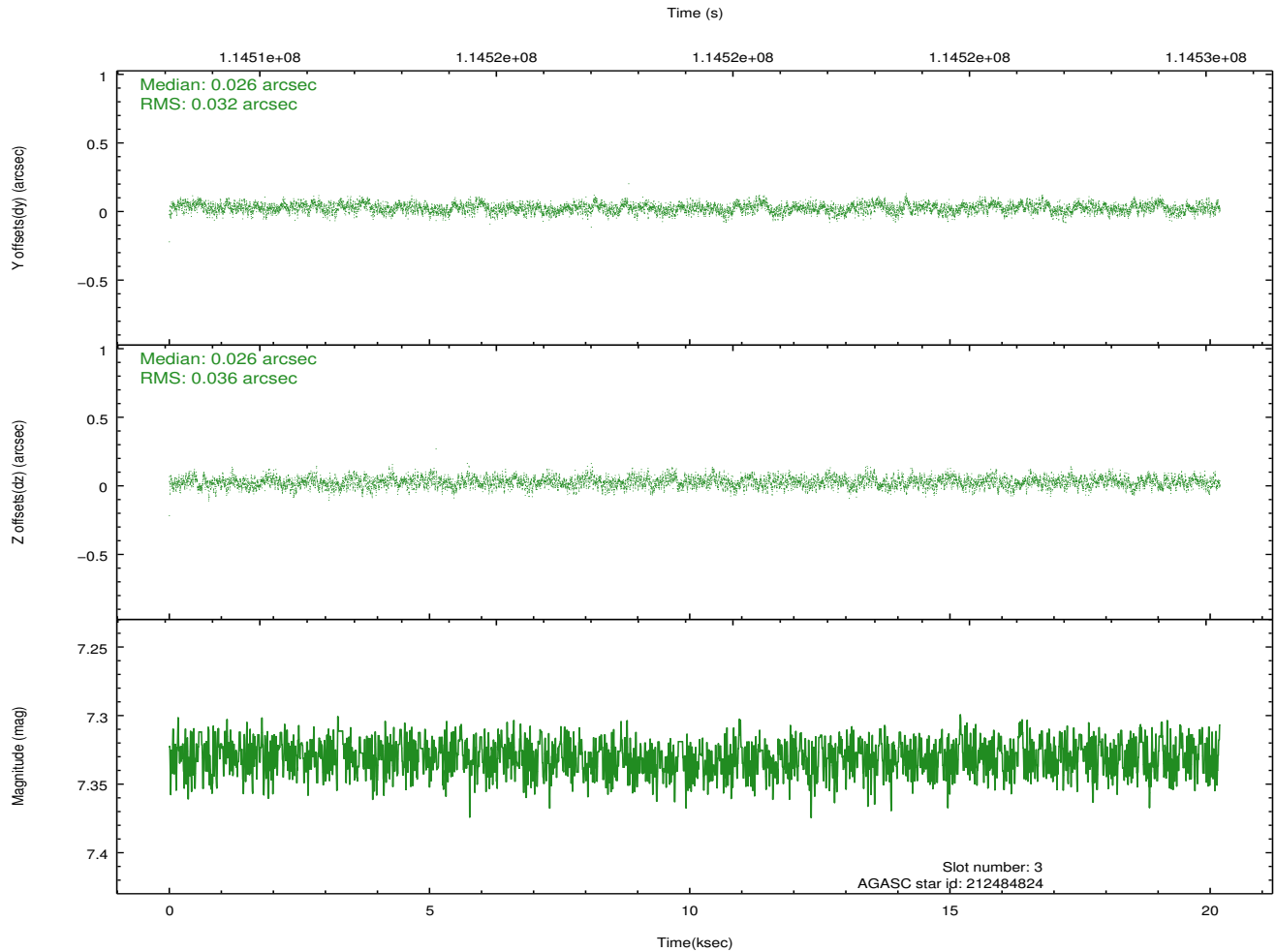
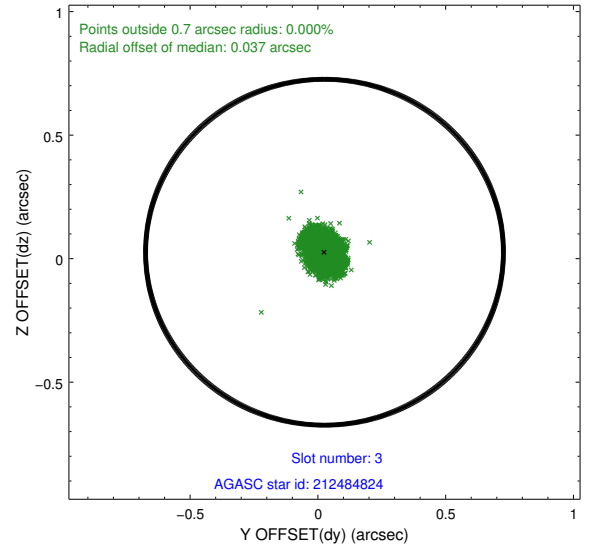
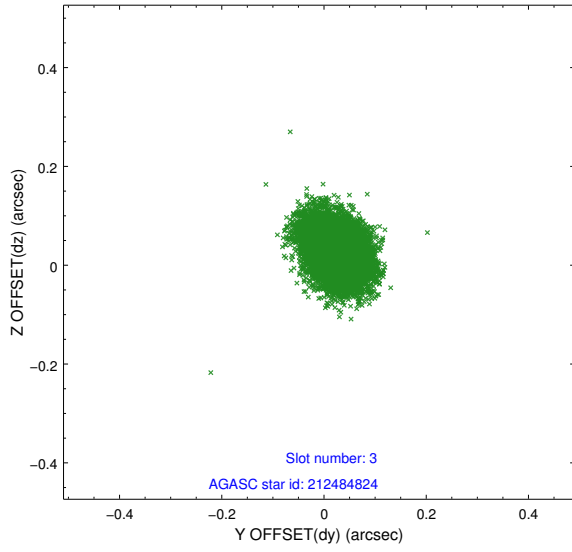


Slot Statistics

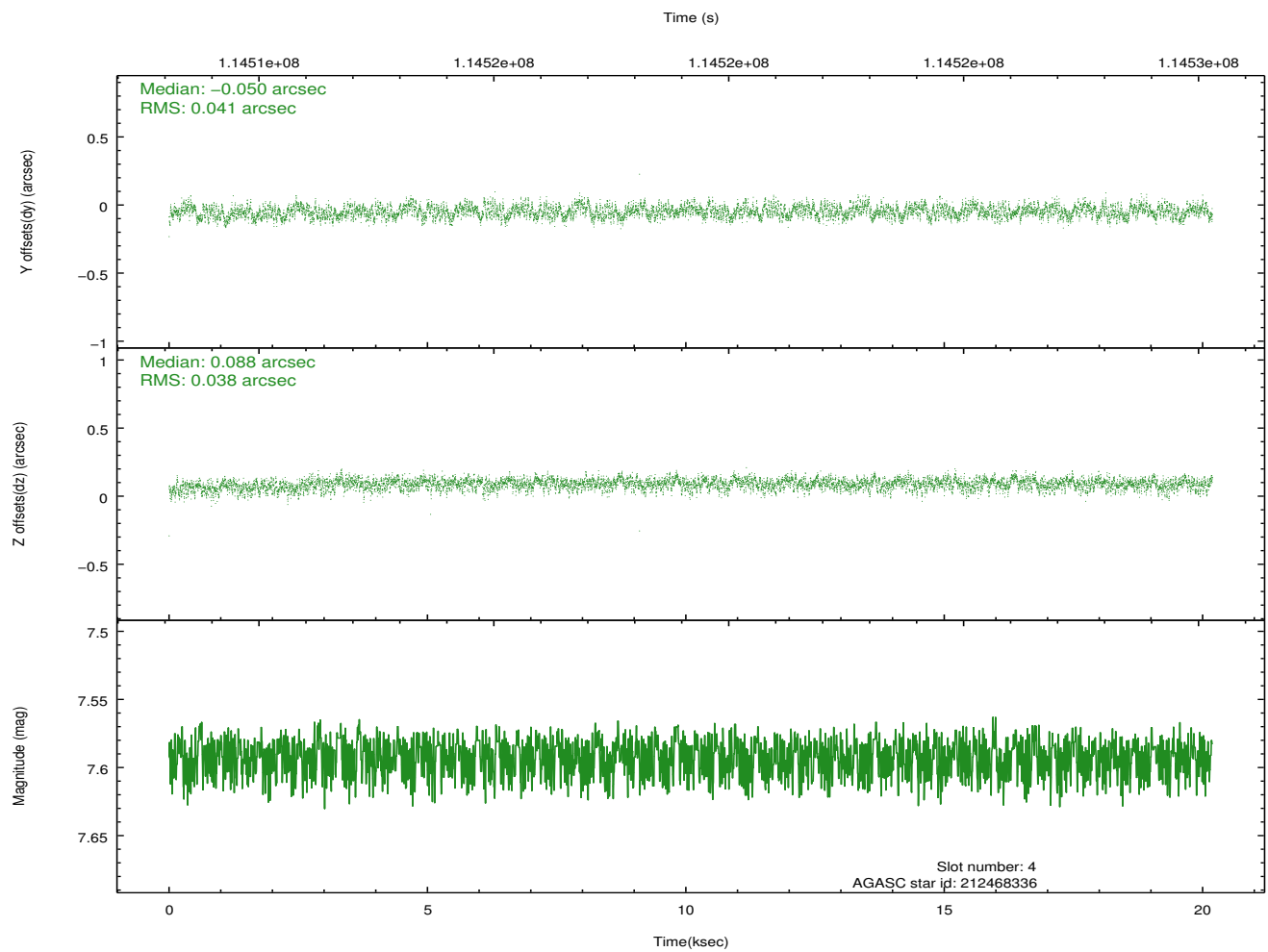
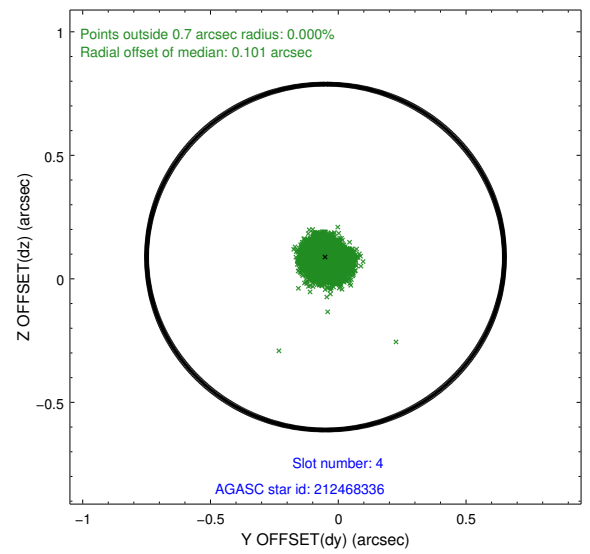
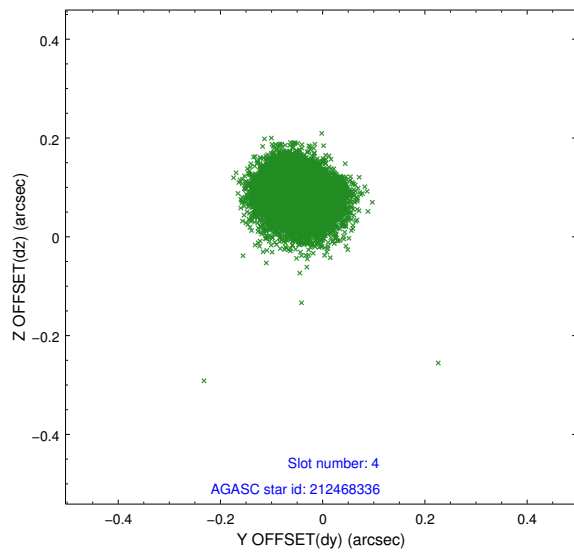
slot	status	id	mag	n_pts	med_dy	med_dz	dr1	dr2	ra	dec	mean_y	mean_z
0	FID	HRC-S-1	6.95	4924	0.141	-0.142	0.008	0.014	0.000000	0.000000	-1157.28	-473.83
1	FID	HRC-S-2	6.94	4924	0.102	-0.094	0.007	0.022	0.000000	0.000000	1242.13	-466.54
2	FID	HRC-S-3	6.97	4924	0.146	-0.067	0.008	0.013	0.000000	0.000000	-1159.74	555.68
3	GUIDE	212484824	7.33	9849	0.026	0.026	0.051	0.084	301.436883	17.597881	1517.63	-708.53
4	GUIDE	212468336	7.59	9849	-0.050	0.088	0.060	0.092	301.479163	18.244435	-130.91	-2358.00
5	GUIDE	212599608	7.83	9847	-0.066	-0.106	0.069	0.108	302.041368	17.043012	1277.06	2163.11
6	GUIDE	212477672	7.63	9849	-0.006	-0.019	0.055	0.089	301.870505	17.020545	1772.66	1836.49
7	GUIDE	212603624	8.92	9843	0.098	0.012	0.069	0.113	302.163000	18.336944	-2106.37	-1064.87

2.4 Star Slots

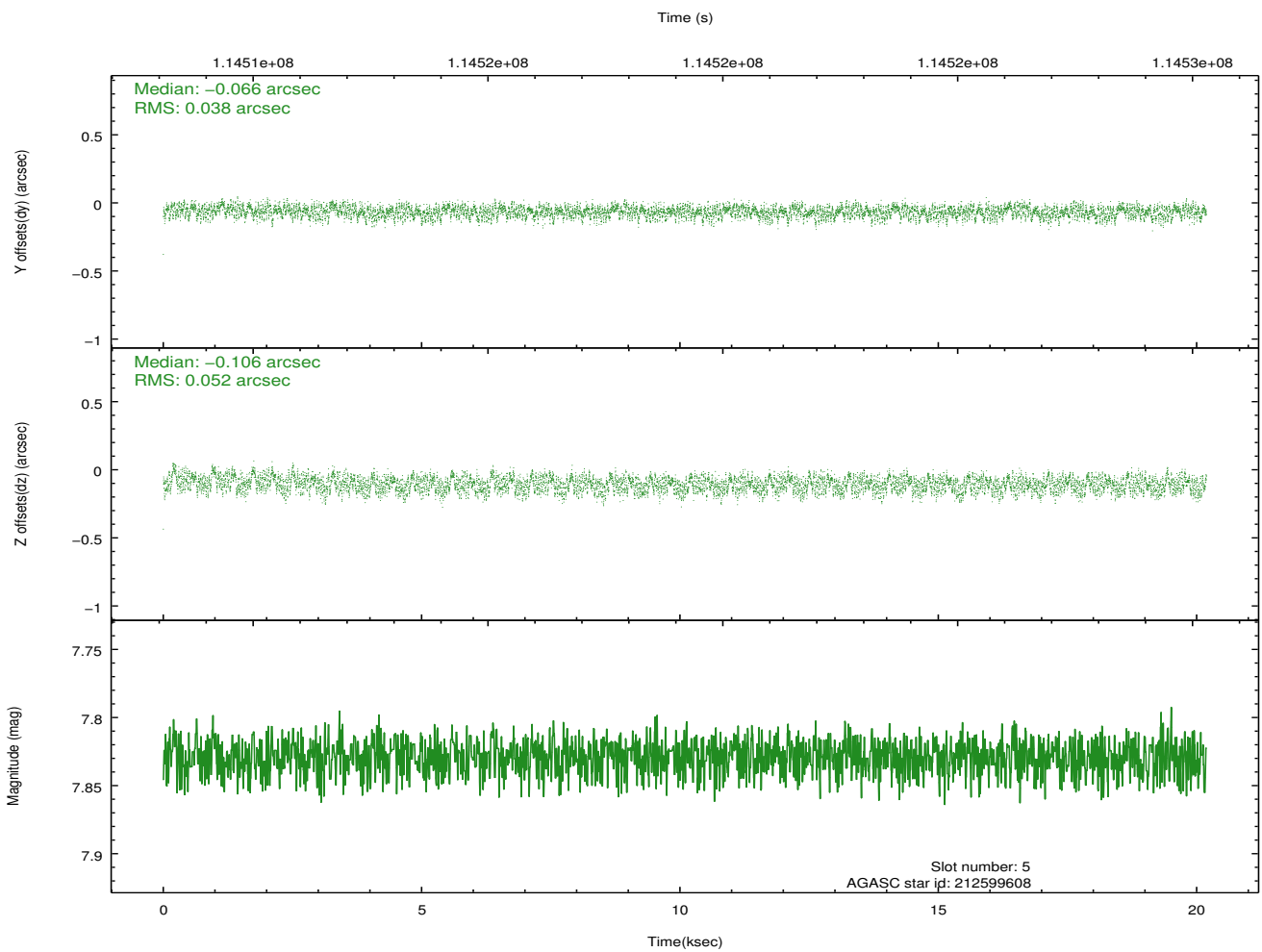
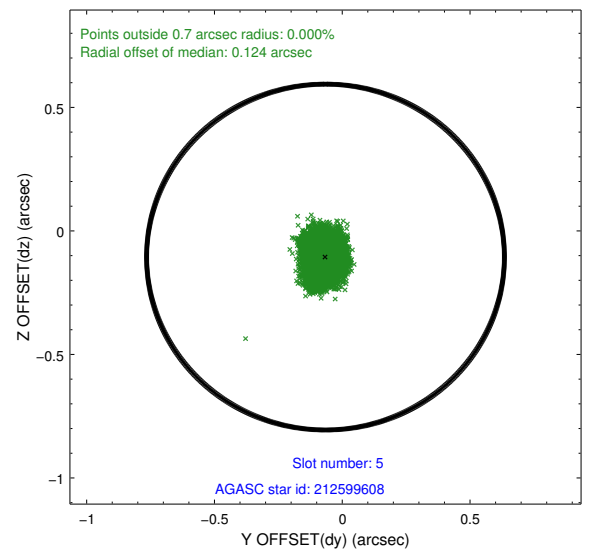
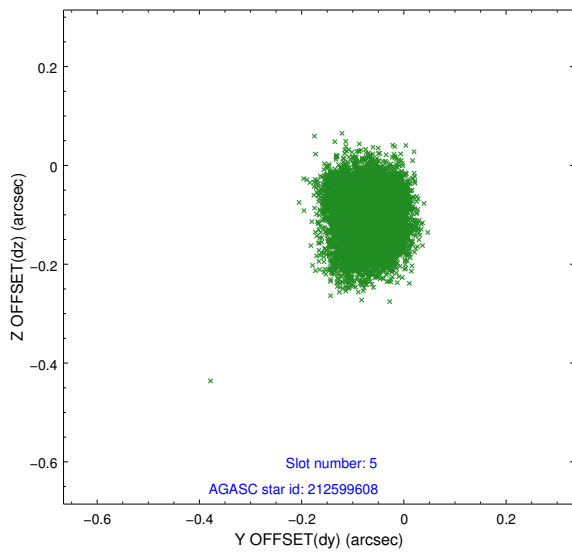
2.4.1 Slot 3



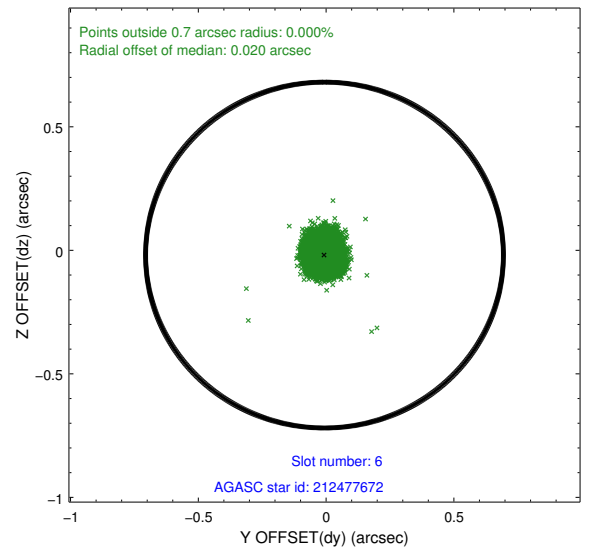
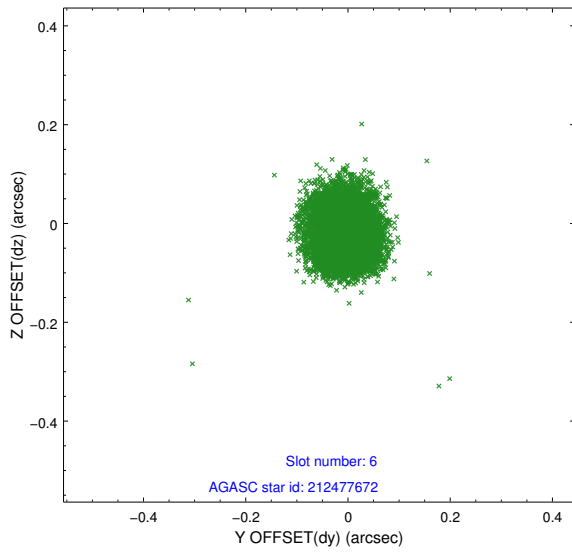
2.4.2 Slot 4



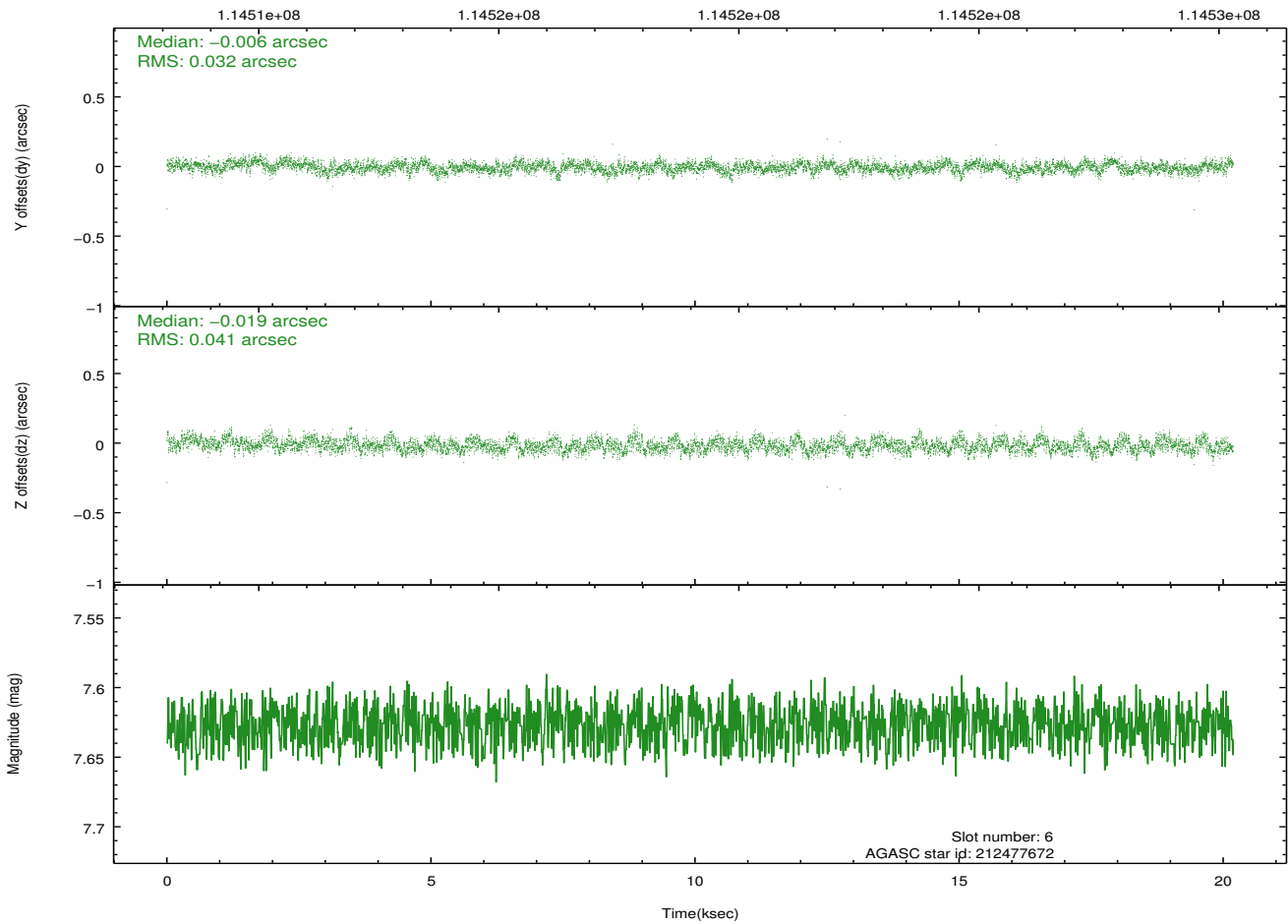
2.4.3 Slot 5



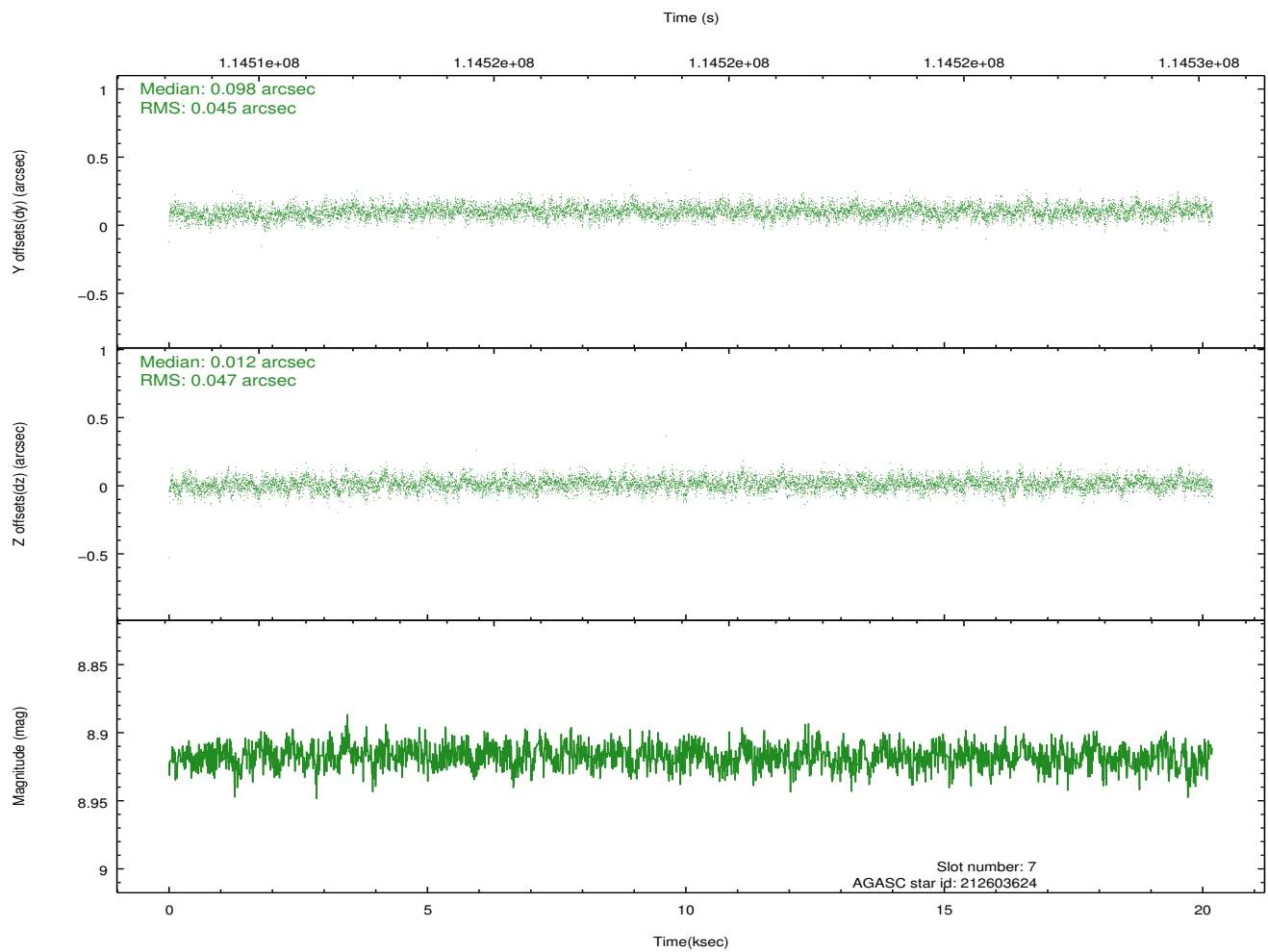
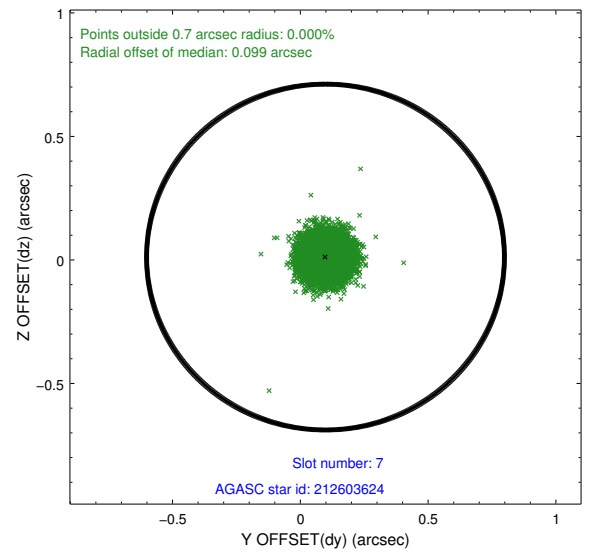
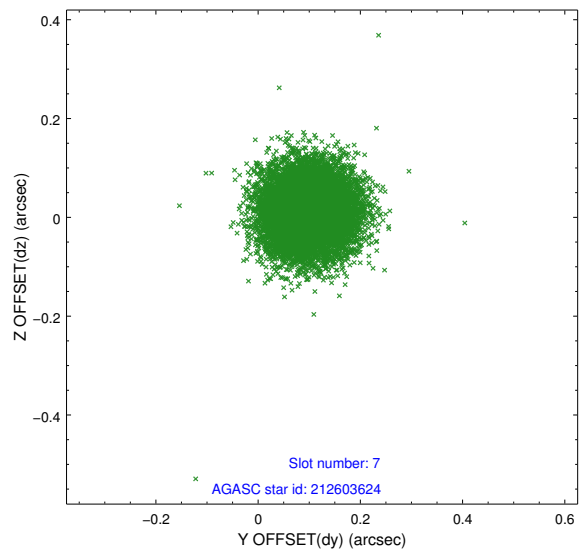
2.4.4 Slot 6



Time (s)

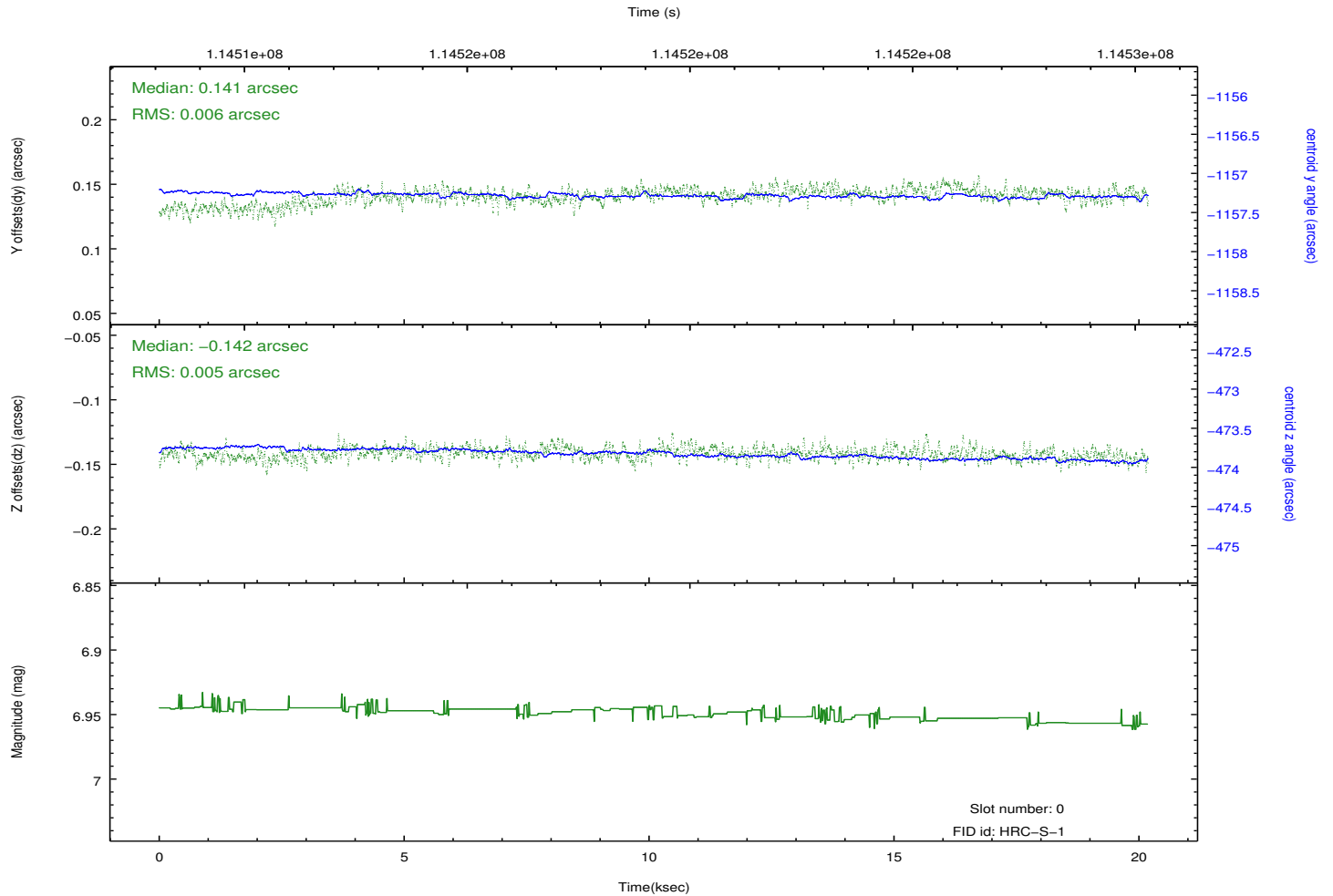
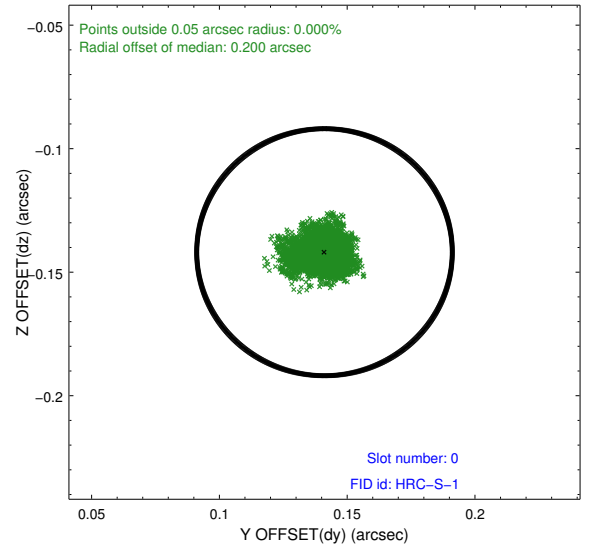
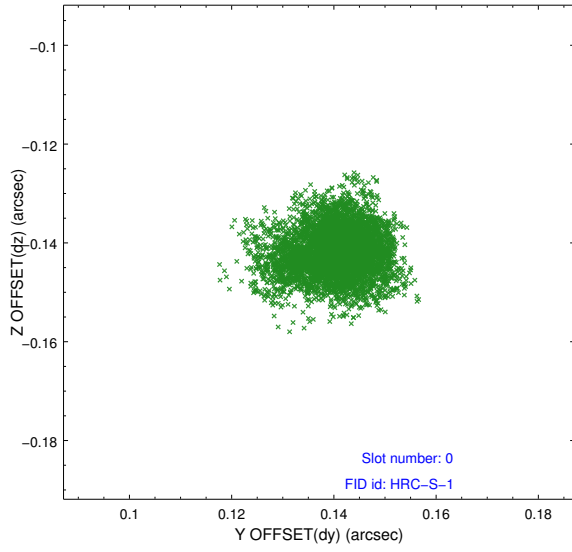


2.4.5 Slot 7

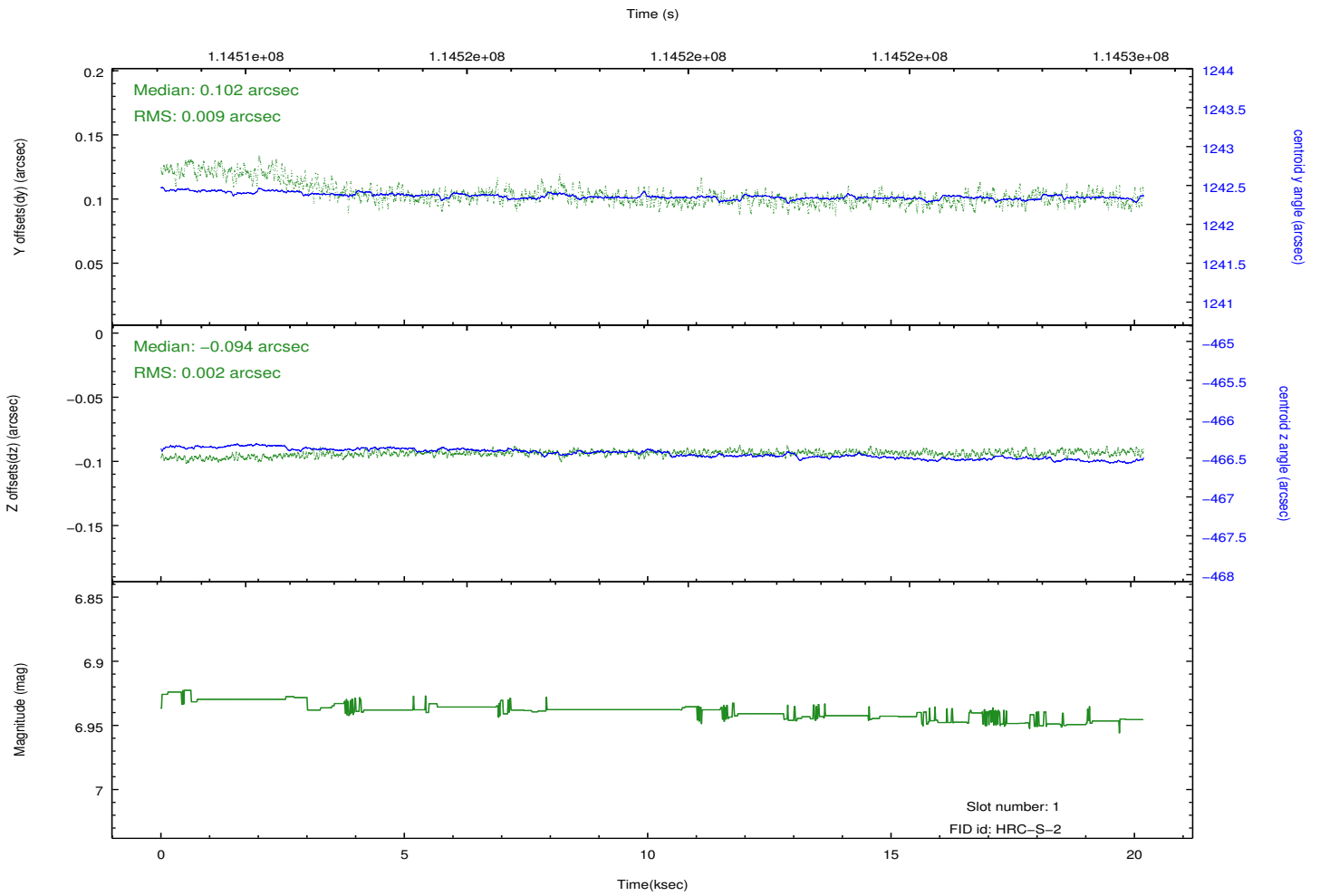
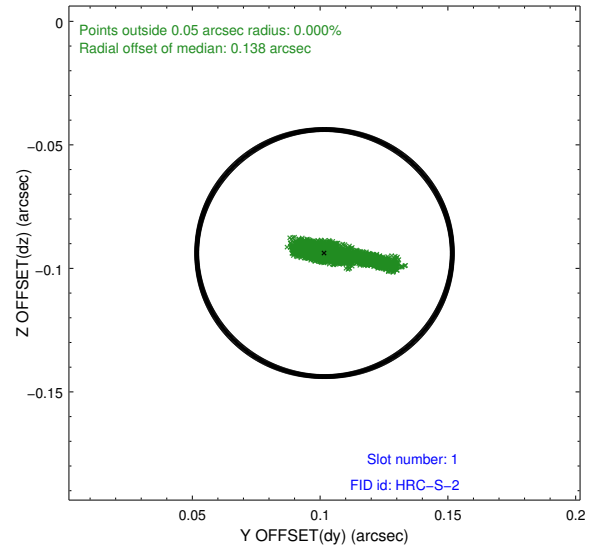
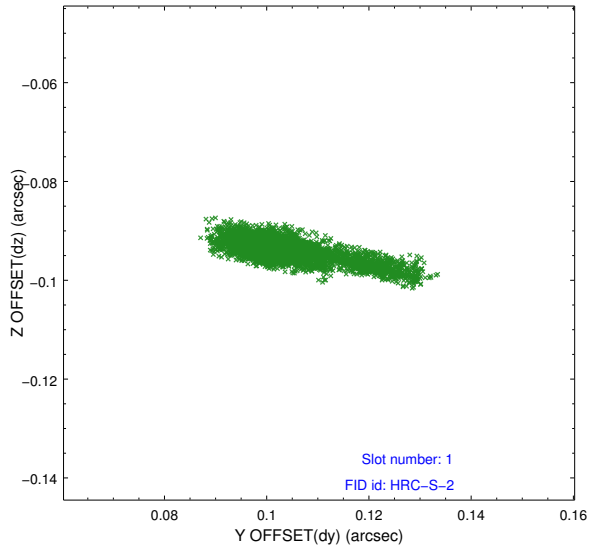


2.5 FID Slots

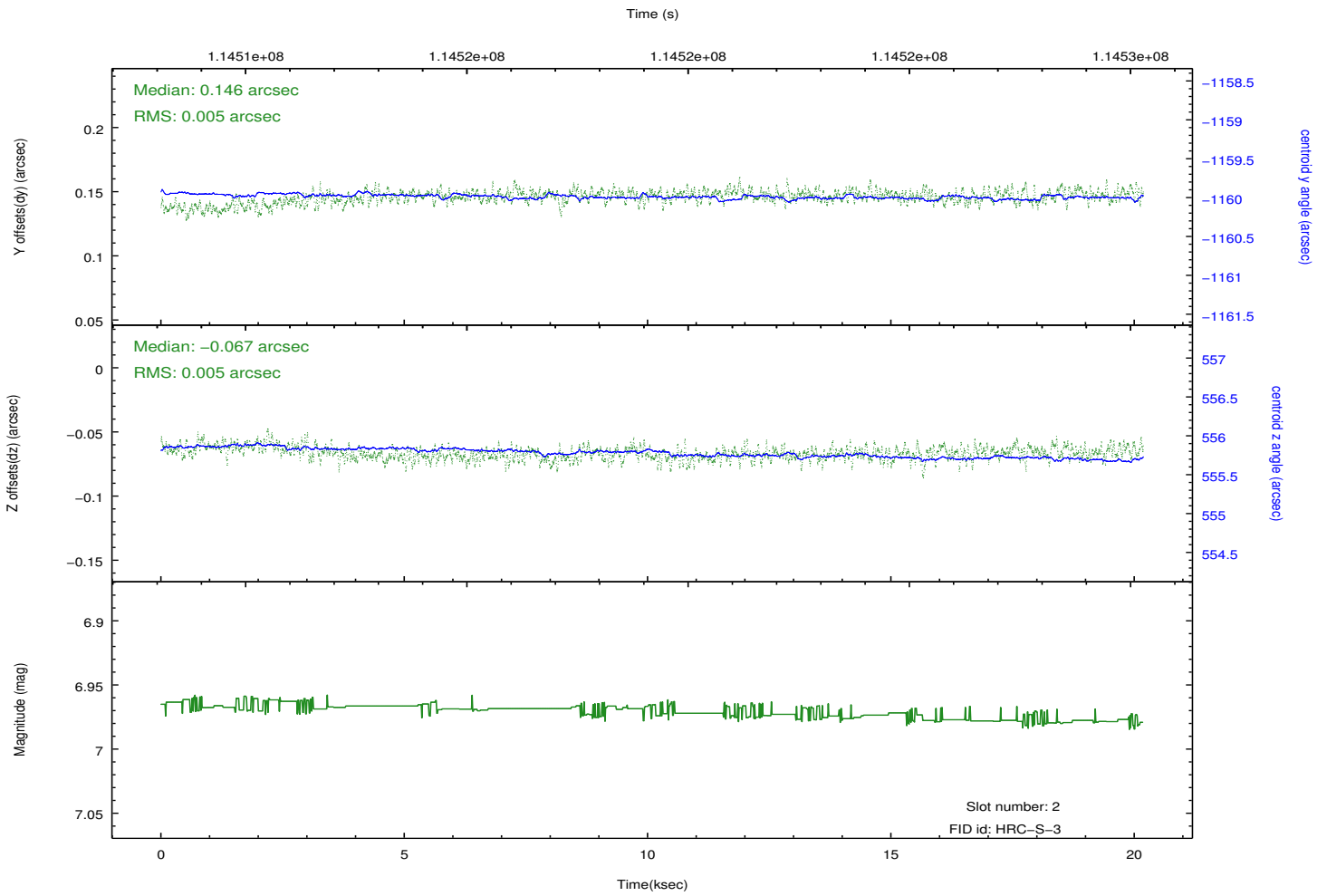
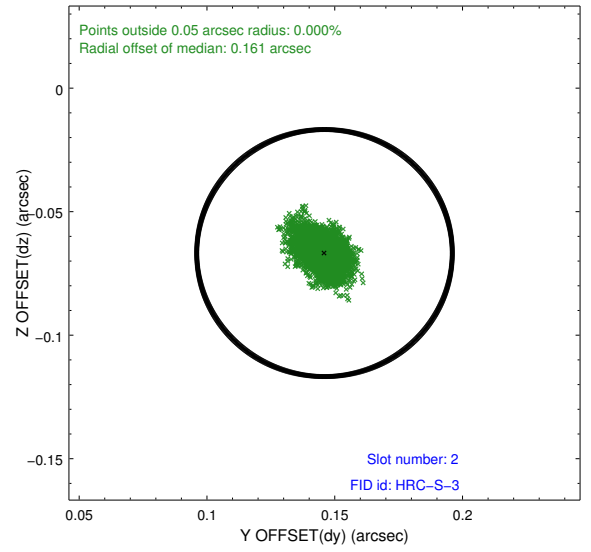
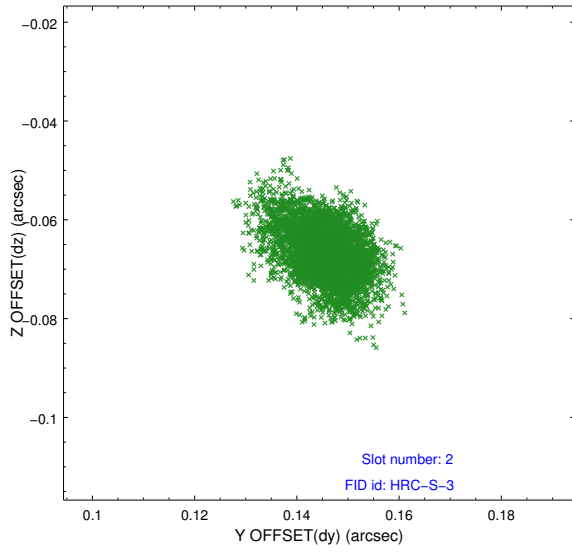
2.5.1 Slot 0



2.5.2 Slot 1

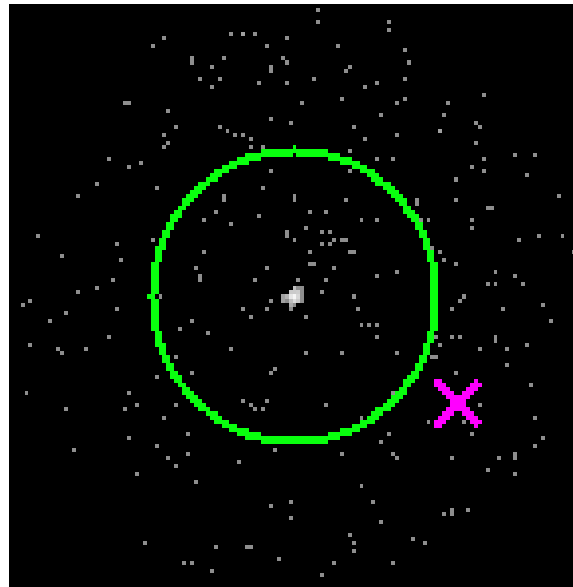


2.5.3 Slot 2

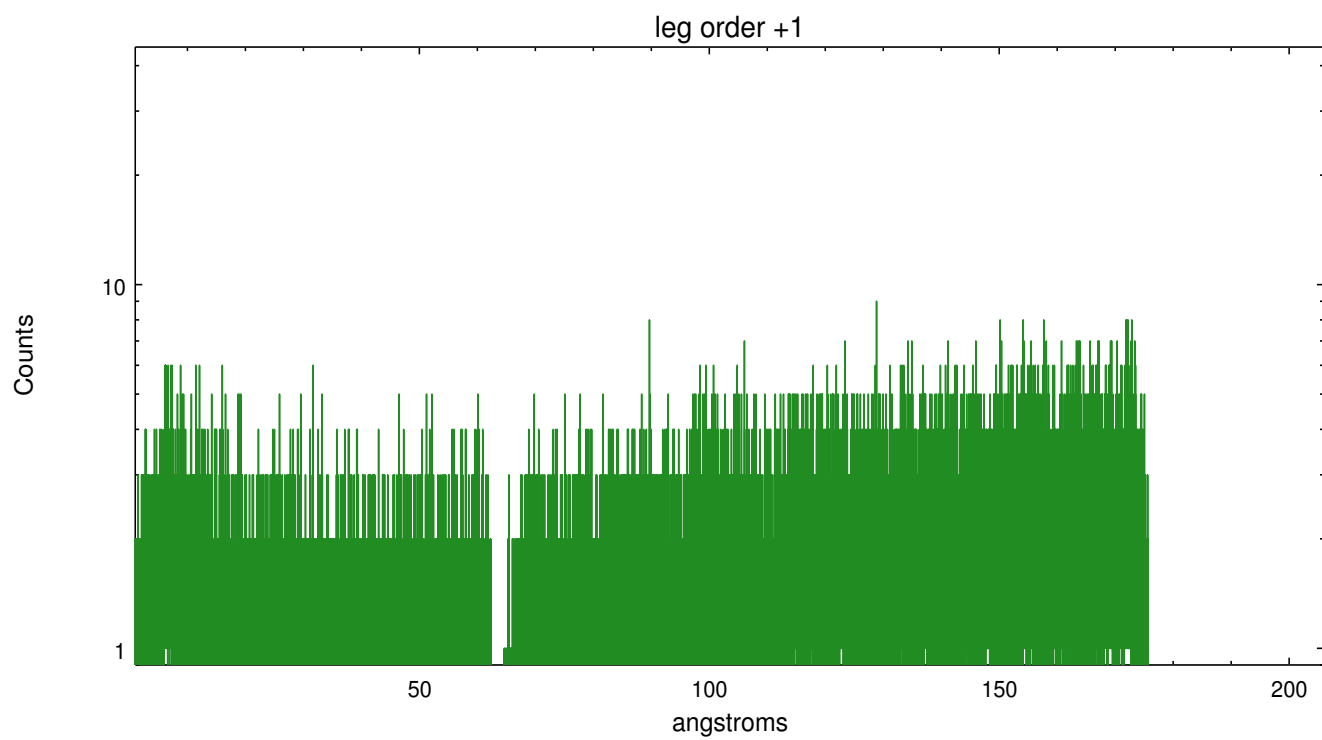
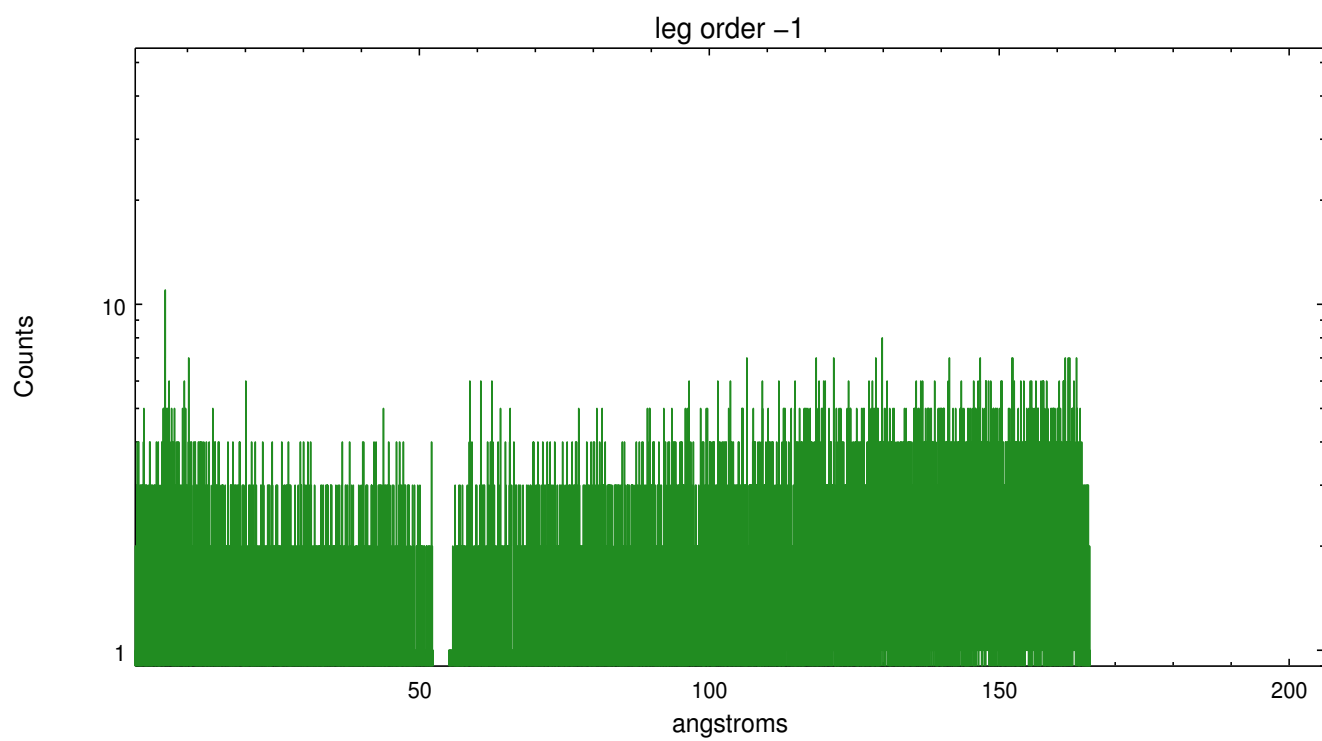


3 Gratings

3.1 LETG Arm



LETG Zero Order



A Summary

A.1 Status

V&V Scientist	Joy Nichols
V&V Date (YYYY-MM-DD)	2012.10.02
V&V Edition	1
V&V Disposition and Status	OK
V&V Charge Time	19.984

A.2 Comments

Monitor constraint not met. From CDO: Although the monitoring constraints were technically violated, the proposer is happy with the data. The source has also faded so no repeat observation is possible.