

V&V Reference Report

L2 ASCDS Version : 8.4.5

Observation 2536 - L2 Version 3
Chandra X-Ray Center

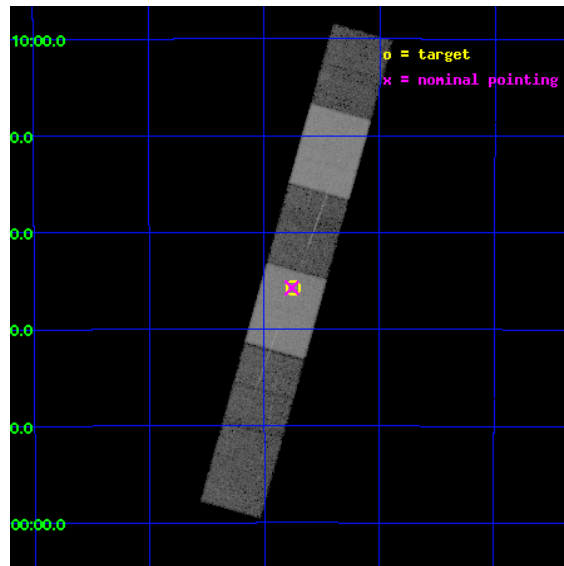
L2 Processing Date : Oct 5 2012

Contents

1	Front	2
2	OBI	3
2.1	OBI	3
2.1.1	Images	3
2.1.2	Bias	3
2.1.3	Parameters	4
2.1.4	Events	4
2.2	Compared Parameters	5
2.3	Aspect	6
2.4	Star Slots	9
2.4.1	Slot 3	9
2.4.2	Slot 4	10
2.4.3	Slot 5	11
2.4.4	Slot 6	12
2.4.5	Slot 7	13
2.5	FID Slots	14
2.5.1	Slot 0	14
2.5.2	Slot 1	15
2.5.3	Slot 2	16
3	Gratings	17
3.1	HEG Arm	17
3.2	MEG Arm	19
A	Summary	21
A.1	Status	21
A.2	Comments	21

1 Front

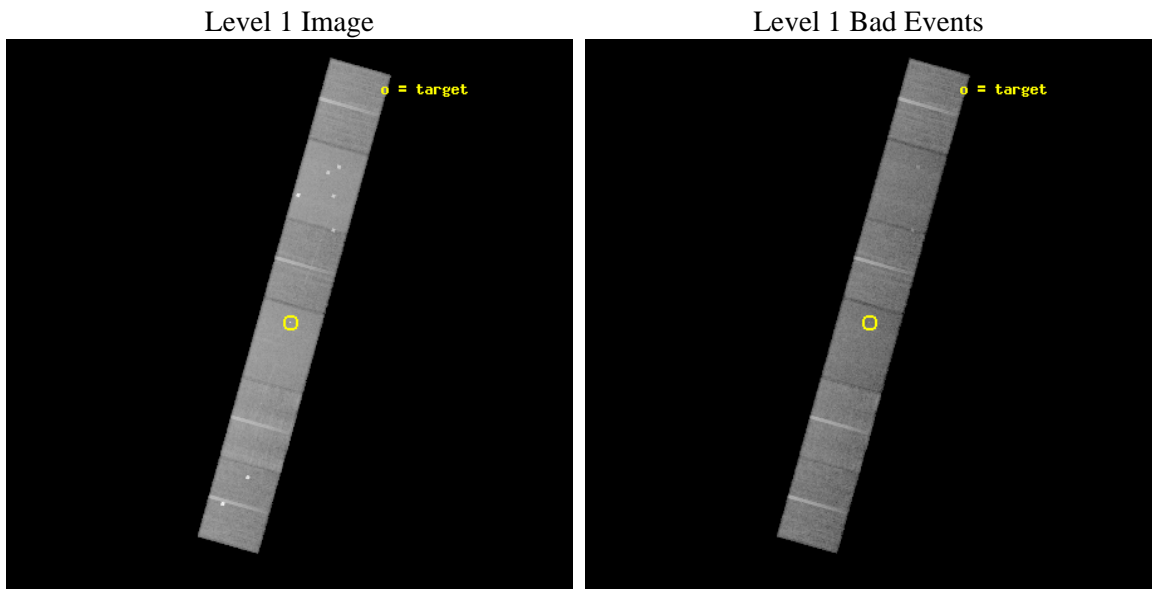
seq_num	200144	Sequence number
obs_id	2536	Observation id
title	HIGH-RESOLUTION SPECTRA OF T TAURI STARS	Proposal title
observer	Dr. Stephen Murray	Principal investigator
object	SPEEDY MIC	Source name
dtcycle	0	
cycle	P	events from which exps? Prim/Second/Both
ra_targ	311.9375	Observer's specified target RA [deg]
dec_targ	-36.594667	Observer's specified target Dec [deg]
ra_nom	311.93999734932	Nominal RA [deg]
dec_nom	-36.595618175138	Nominal Dec [deg]
roll_nom	105.65811291335	Nominal Roll [deg]
revision	3	Processing version of data
ontime	34960.0	Sum of GTIs [s]
liveltime	34395.365677045	Livetime [s]
ontime4	34960.0	Sum of GTIs [s]
ontime5	34960.0	Sum of GTIs [s]
ontime6	34960.0	Sum of GTIs [s]
ontime7	34960.0	Sum of GTIs [s]
ontime8	34957.458989888	Sum of GTIs [s]
ontime9	34960.0	Sum of GTIs [s]
l2events	266783	Number of level 2 events



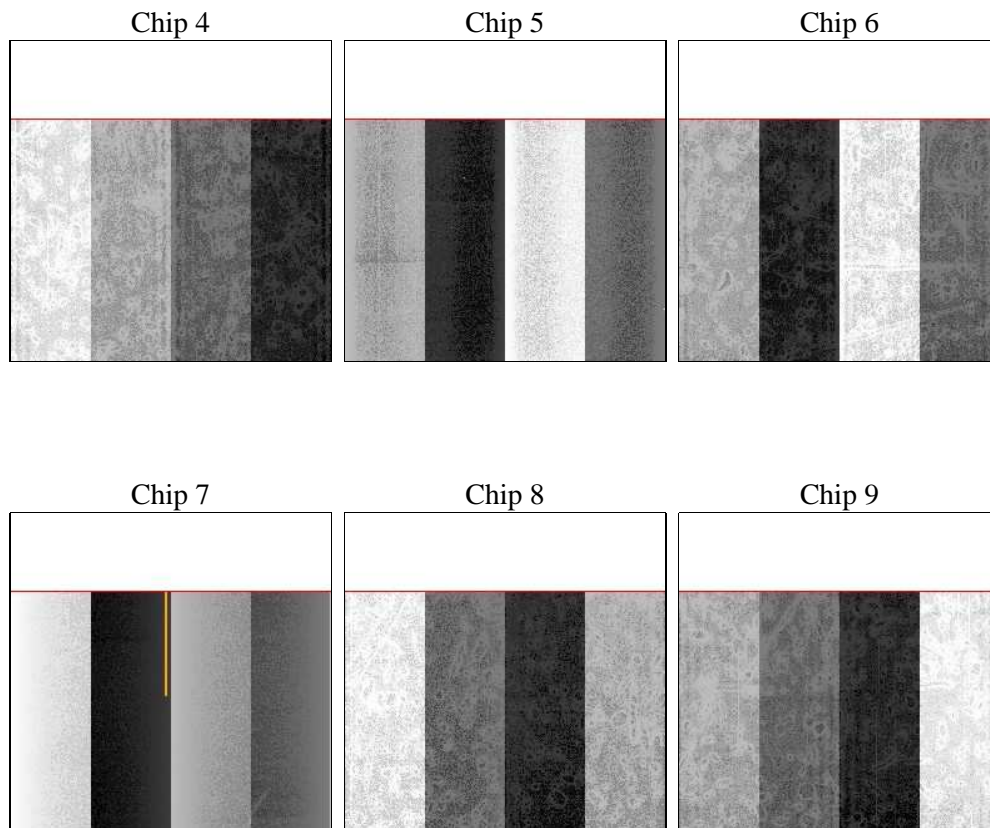
2 OBI

2.1 OBI

2.1.1 Images



2.1.2 Bias



2.1.3 Parameters

obi_num	1	Obi number	sched_exp_time	35000.000000	[s] Scheduled observation exposure time
ascdsver	8.4.5	Processing system revision	ontime	34960.0	Sum of GTIs [s]
caldbver	4.5.2	 	ontime4	34960.0	Sum of GTIs [s]
date	2012-10-05T17:54:30	Date and time of file creation	ontime5	34960.0	Sum of GTIs [s]
revision	3	Processing version of data	ontime6	34960.0	Sum of GTIs [s]
			ontime7	34960.0	Sum of GTIs [s]
			ontime8	34957.458989888	Sum of GTIs [s]
			ontime9	34960.0	Sum of GTIs [s]
			l1events	1221797	Number of level 1 events

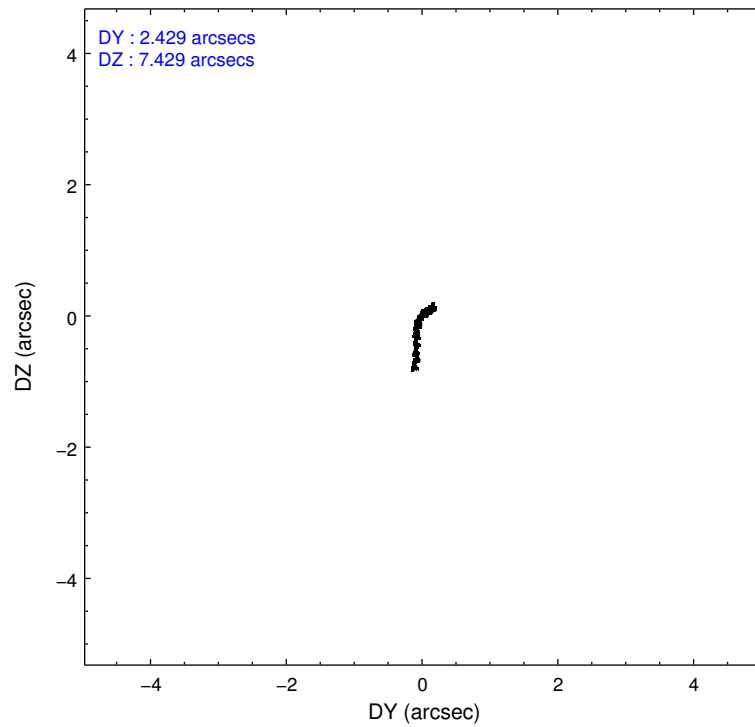
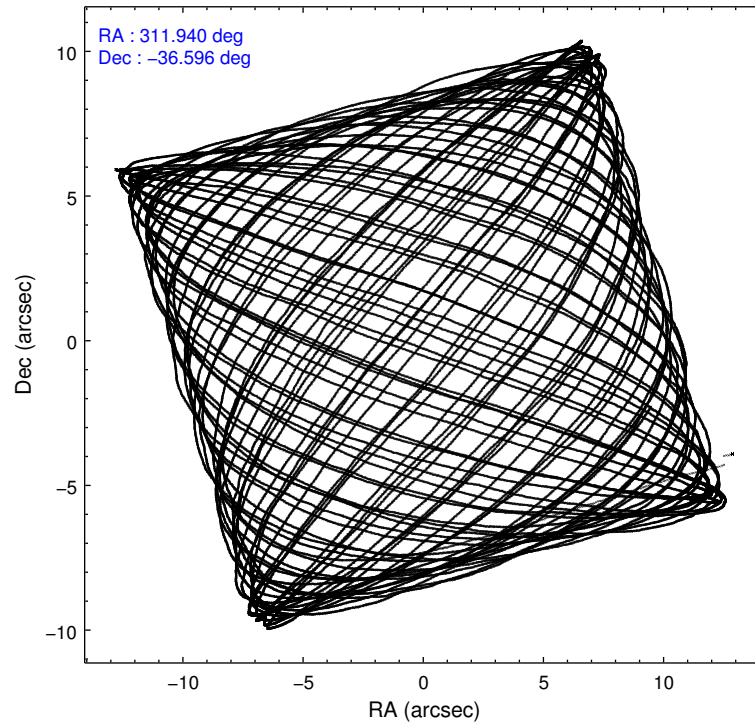
2.1.4 Events

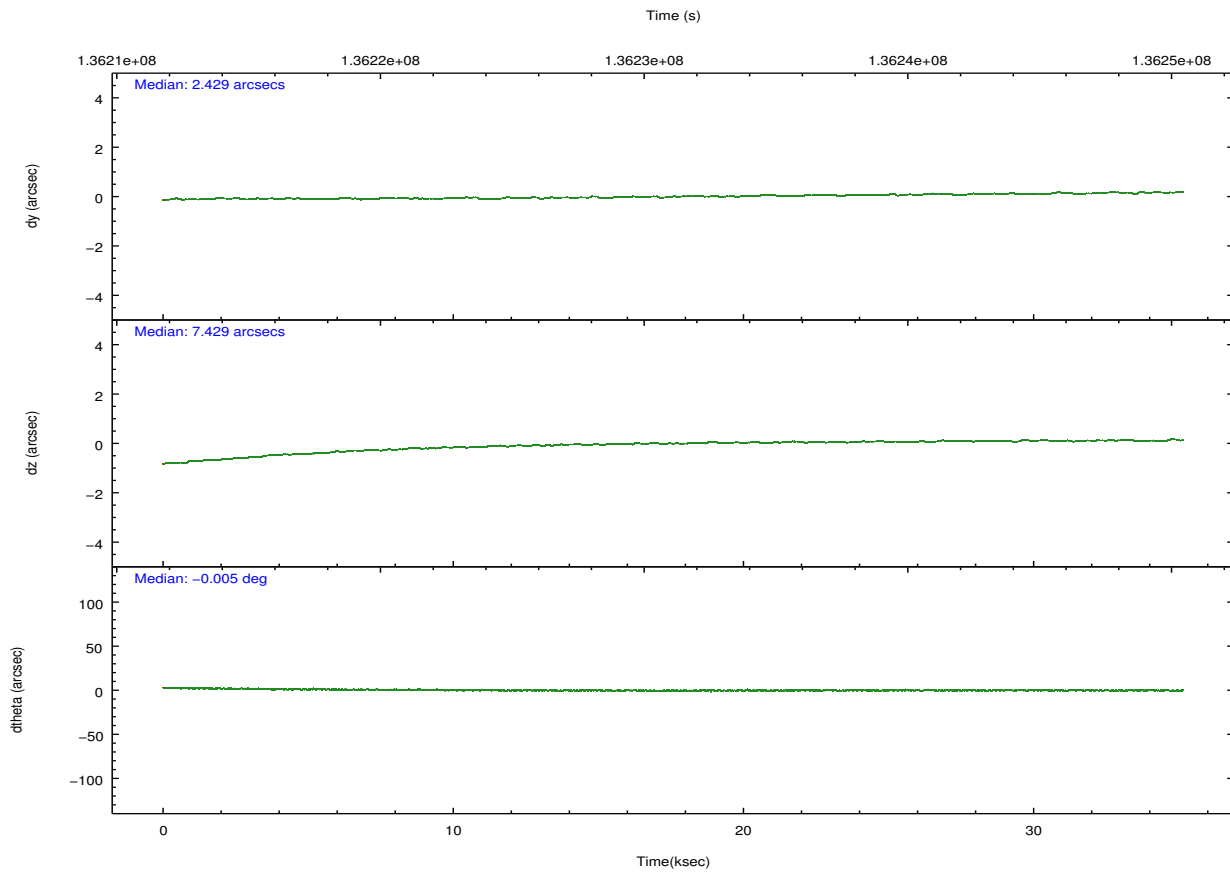
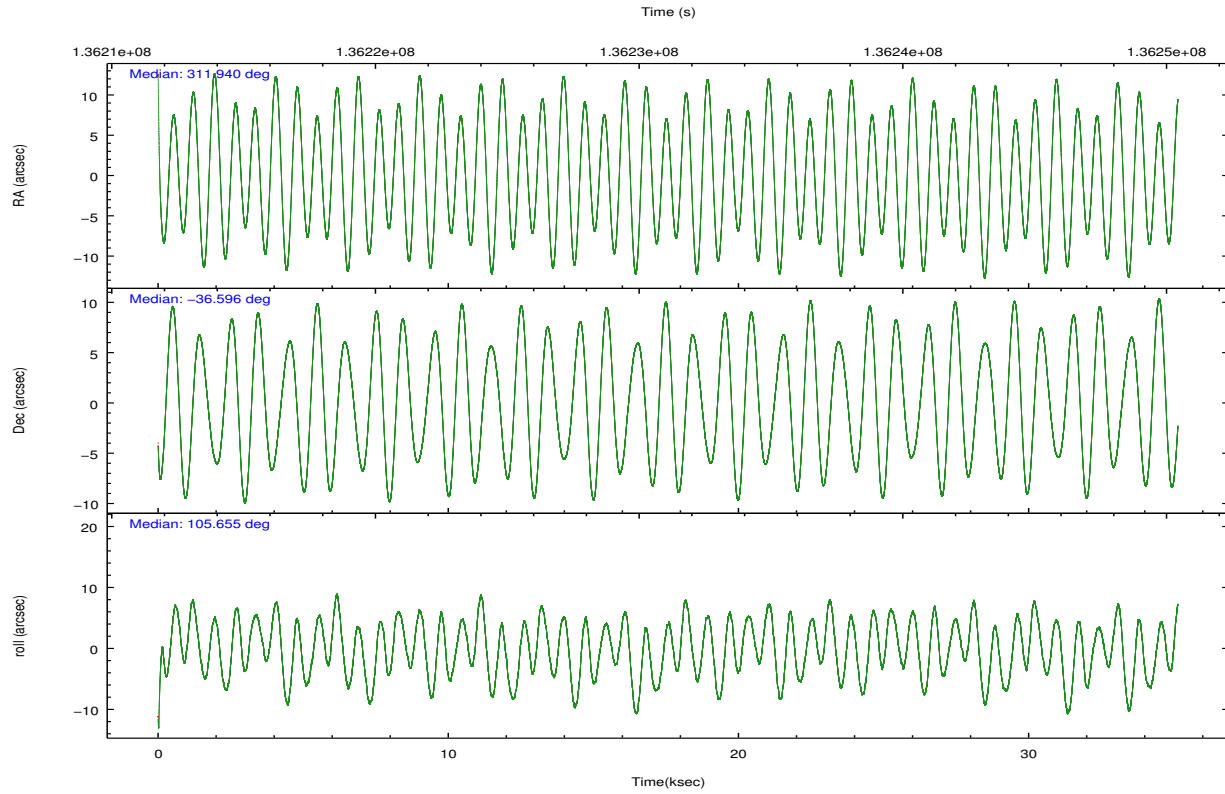
	ccd 4	ccd 5	ccd 6	ccd 7	ccd 8	ccd 9		ccd 4	ccd 5	ccd 6	ccd 7	ccd 8	ccd 9
level 1 events	186530	252222	168181	215489	217291	182084	grade 0 events	8879	27253	9097	8937	15513	13373
rejected events	164636	127449	146635	122943	167718	142627		4%	10%	5%	4%	7%	7%
rejected %	88%	50%	87%	57%	77%	78%	grade 1 events	69	1006	75	220	124	78
								0%	0%	0%	0%	0%	0%
							grade 2 events	5143	31096	4253	18502	10462	17912
								2%	12%	2%	8%	4%	9%
							grade 3 events	2108	5254	2127	8764	5376	2137
								1%	2%	1%	4%	2%	1%
							grade 4 events	2031	5090	2174	8722	5025	2070
								1%	2%	1%	4%	2%	1%
							grade 5 events	6046	18124	7067	20473	9032	7179
								3%	7%	4%	9%	4%	3%
							grade 6 events	3739	56109	3899	47634	13202	3973
								2%	22%	2%	22%	6%	2%
							grade 7 events	158515	108290	139489	102237	158557	135362
								84%	42%	82%	47%	72%	74%

2.2 Compared Parameters

Parameter	Planned	Actual	Parameter	Planned	Actual
Instrument	ACIS	ACIS	Obspar format version number	7	7
Detector	ACIS-456789	ACIS-456789	Obspar file type	PREDICTED	ACTUAL
Grating	HETG	HETG	Obspar update status	NONE	UPDATED
Data mode	FAINT	FAINT	Number of optional ACIS chips dropped	0	0
Observation mode	POINTING	POINTING	On-chip summing requested	N	N
[deg] Pointing RA	311.964572	311.9399973493188	Subarray requested	CUSTOM	CUSTOM
[deg] Pointing Dec	-36.614410	-36.59561817513822	Subarray start row	1	1
[deg] Pointing Roll	105.516141	105.6581129133458	Subarray row count	774	774
[mm] SIM focus pos	-0.684267	-0.6828225247311905	Alternating exposures requested	N	N
[mm] SIM defocus	0	0.001444936568705701	[s] Primary exposure time	0.000000	2.5
[mm] SIM translation stage pos	-187.132523	-187.1228876879999			
[mm] SIM translation stage offset	-3	-3.009634895007935			
[s] Observation start time (MET)	136213665.184000	136212676.19042			
Observation start date	2002-04-26T13:06:41	2002-04-26T12:51:16			
[s] Observation end time (MET)	136248665.184000	136249298.41692			
Observation end date	2002-04-26T22:50:01	2002-04-26T23:01:38			
Read mode	TIMED	TIMED			

2.3 Aspect



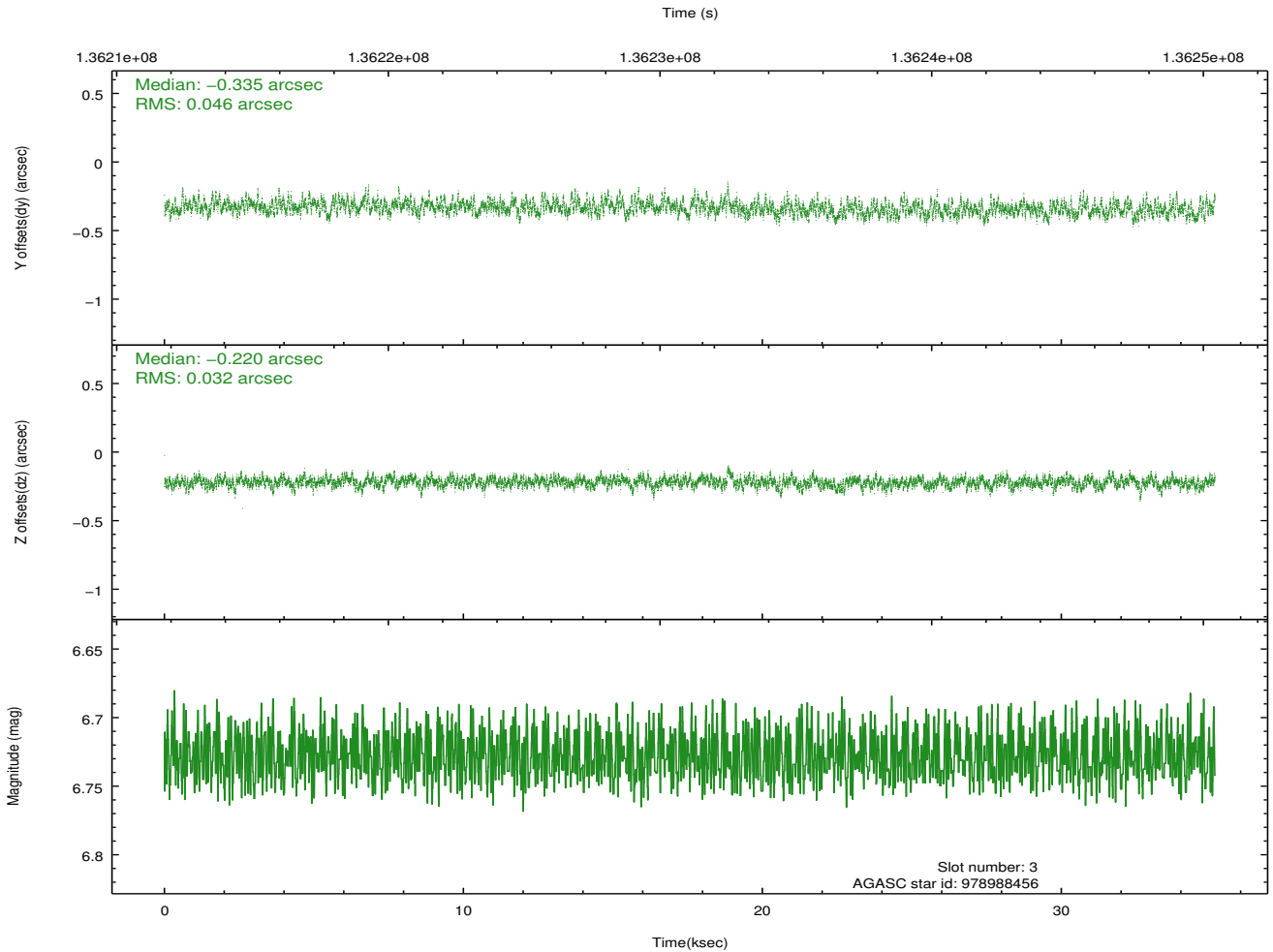
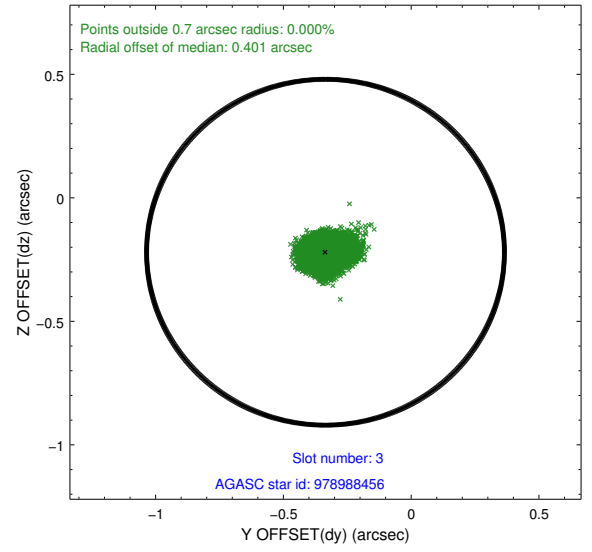
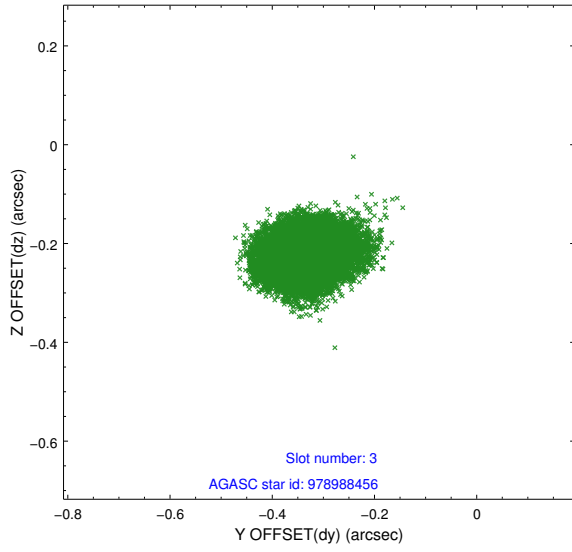


Slot Statistics

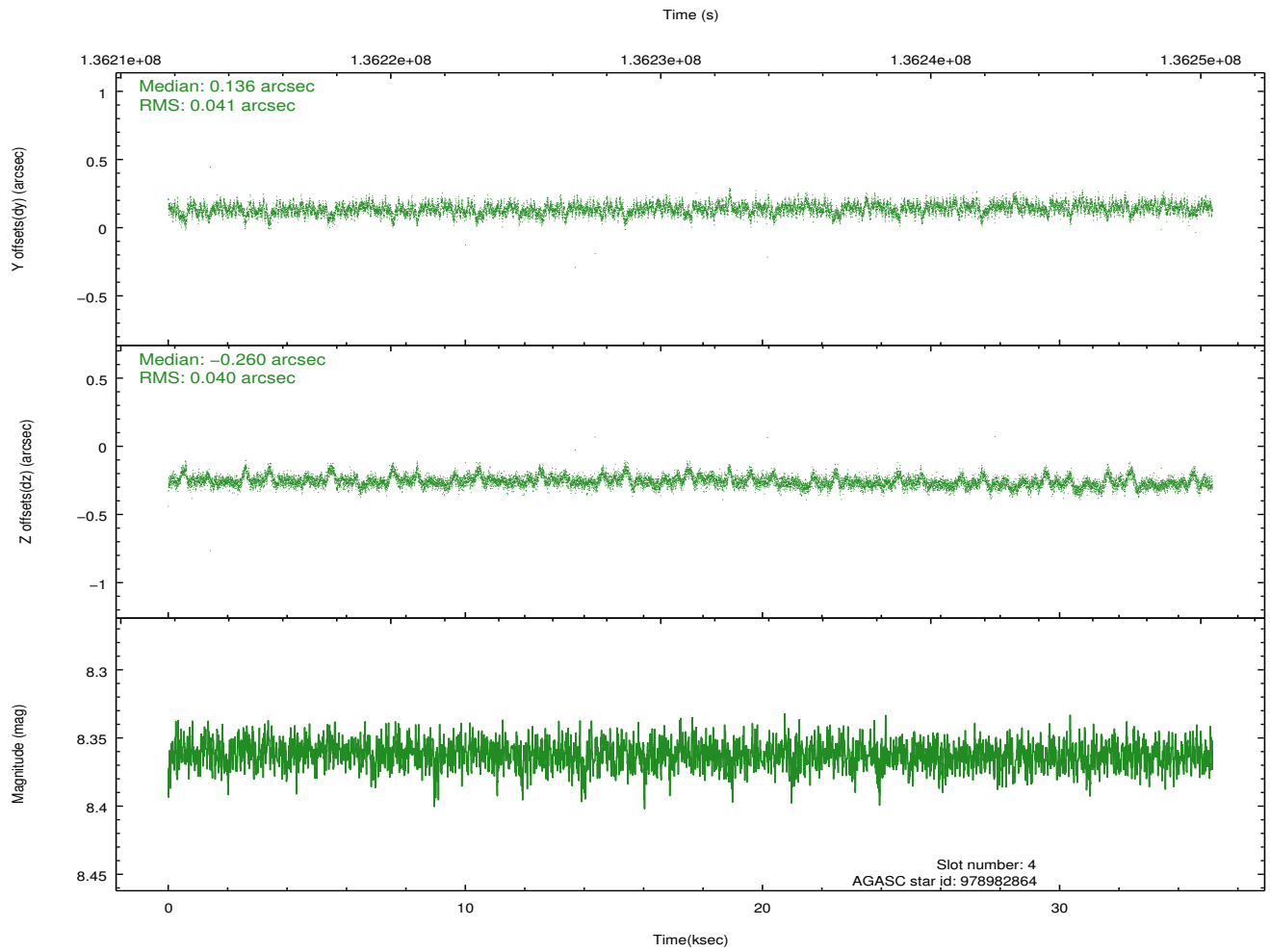
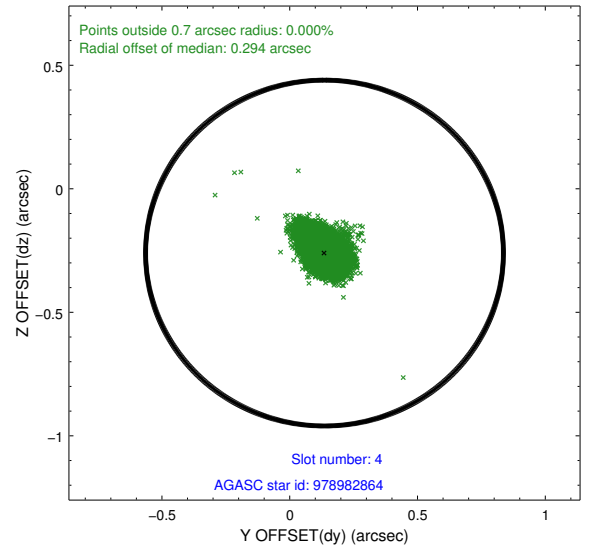
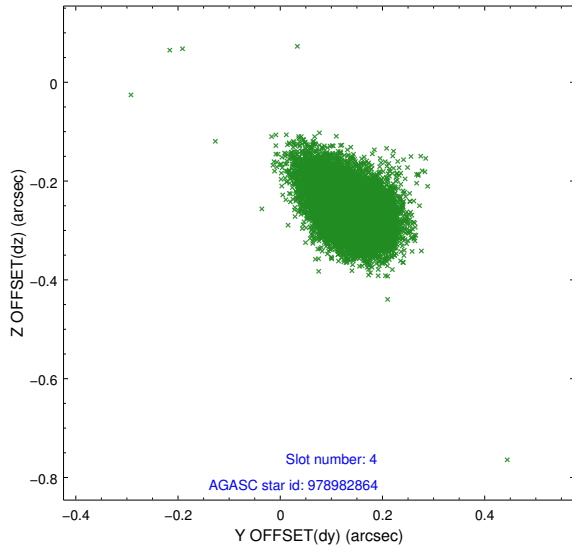
slot	status	id	mag	n_pts	med_dy	med_dz	dr1	dr2	ra	dec	mean_y	mean_z
0	FID	ACIS-S-2	7.10	8572	-0.053	-0.046	0.018	0.024	0.000000	0.000000	-754.88	-1790.69
1	FID	ACIS-S-4	7.20	8571	0.018	0.039	0.019	0.028	0.000000	0.000000	2158.41	117.86
2	FID	ACIS-S-5	7.23	8572	0.007	0.014	0.017	0.025	0.000000	0.000000	-1807.64	111.49
3	GUIDE	978988456	6.73	17143	-0.335	-0.220	0.059	0.096	311.577530	-36.120150	2014.23	609.56
4	GUIDE	978982864	8.36	17140	0.136	-0.260	0.058	0.103	311.499492	-37.036400	-1107.97	1695.34
5	GUIDE	979119192	9.71	17066	0.181	0.308	0.149	0.251	312.824643	-36.828650	-1415.44	-2177.89
6	GUIDE	979116520	9.31	17136	0.265	0.235	0.075	0.121	312.776878	-37.062628	-2187.04	-1813.77
7	GUIDE	978984352	9.69	17058	-0.248	-0.061	0.123	0.199	311.180988	-36.095435	2401.90	1699.56

2.4 Star Slots

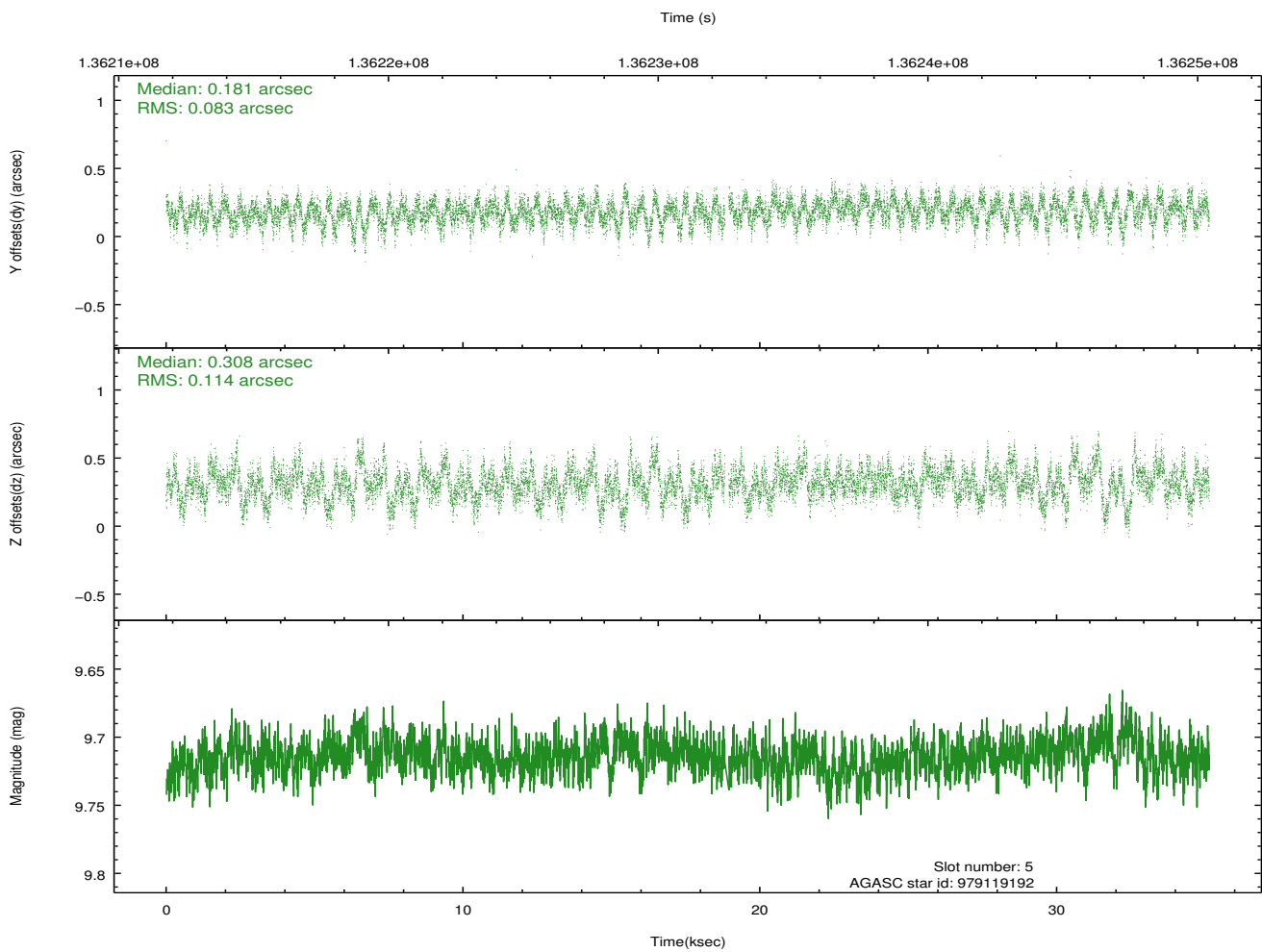
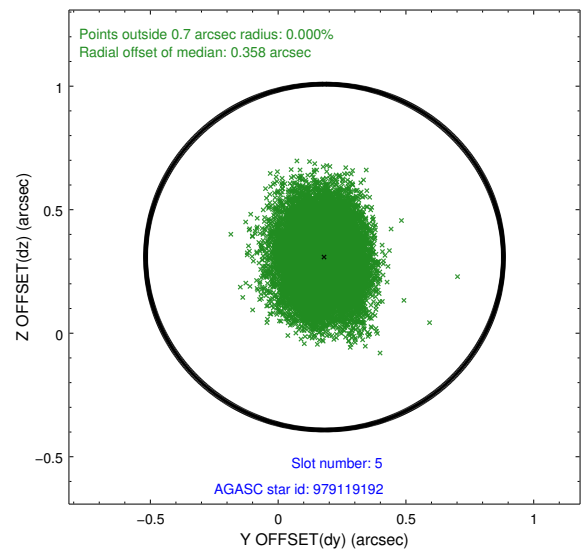
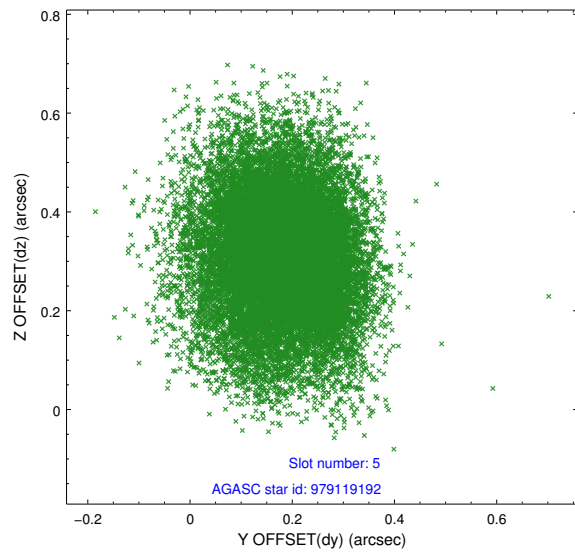
2.4.1 Slot 3



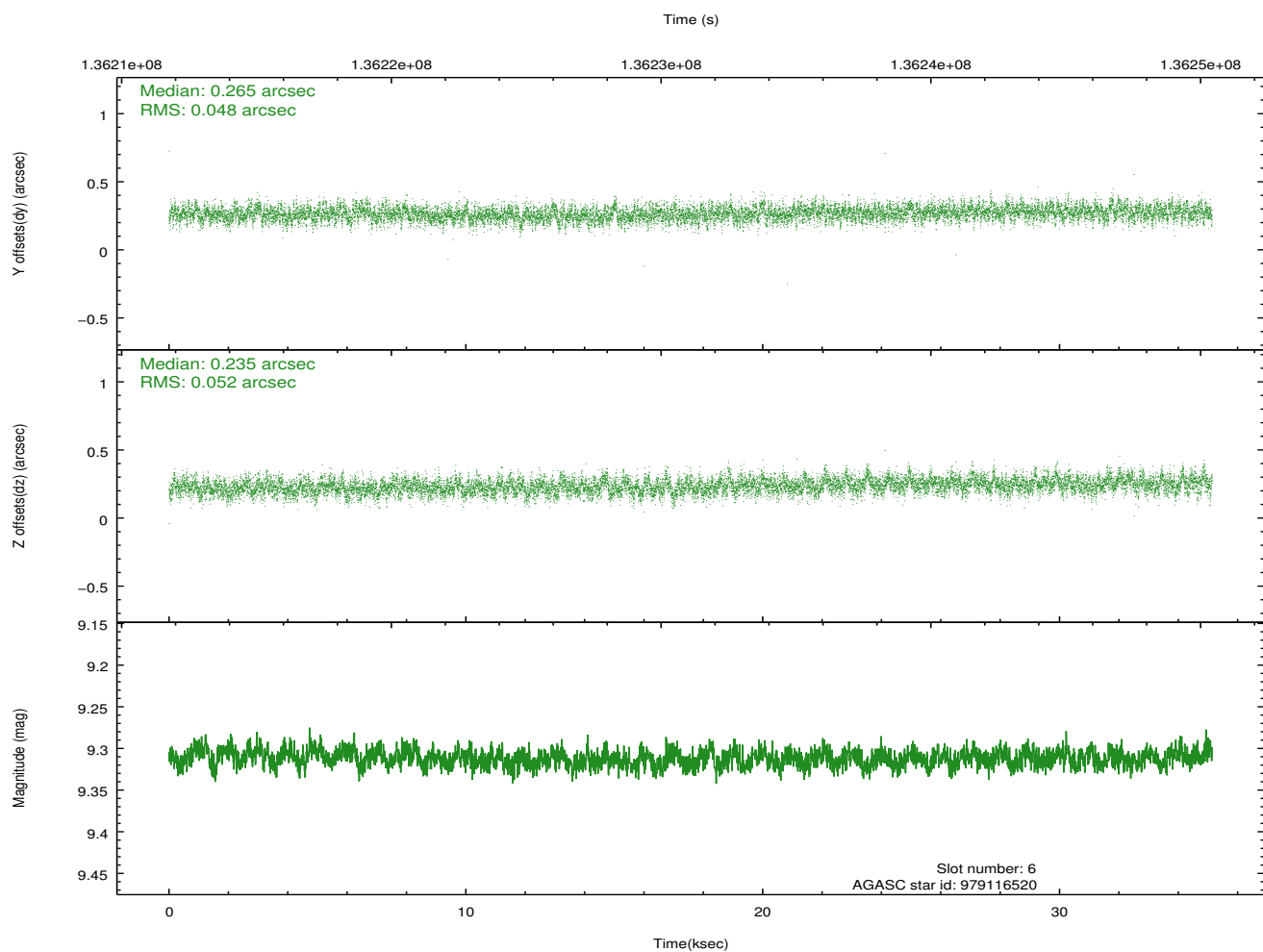
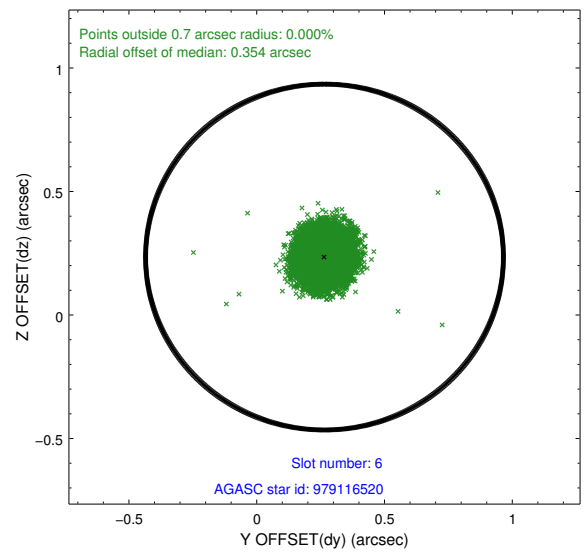
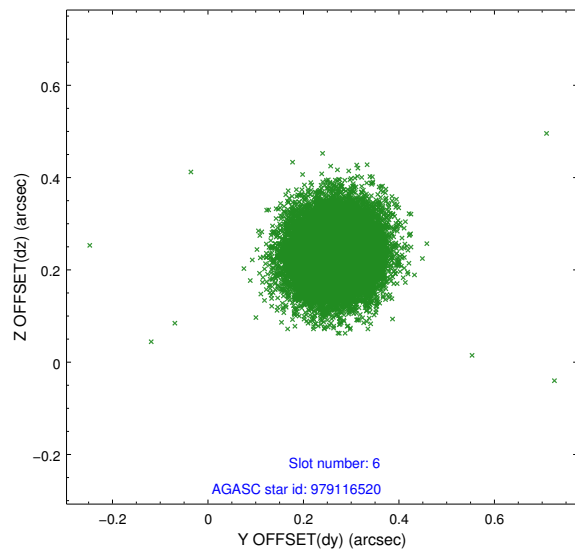
2.4.2 Slot 4



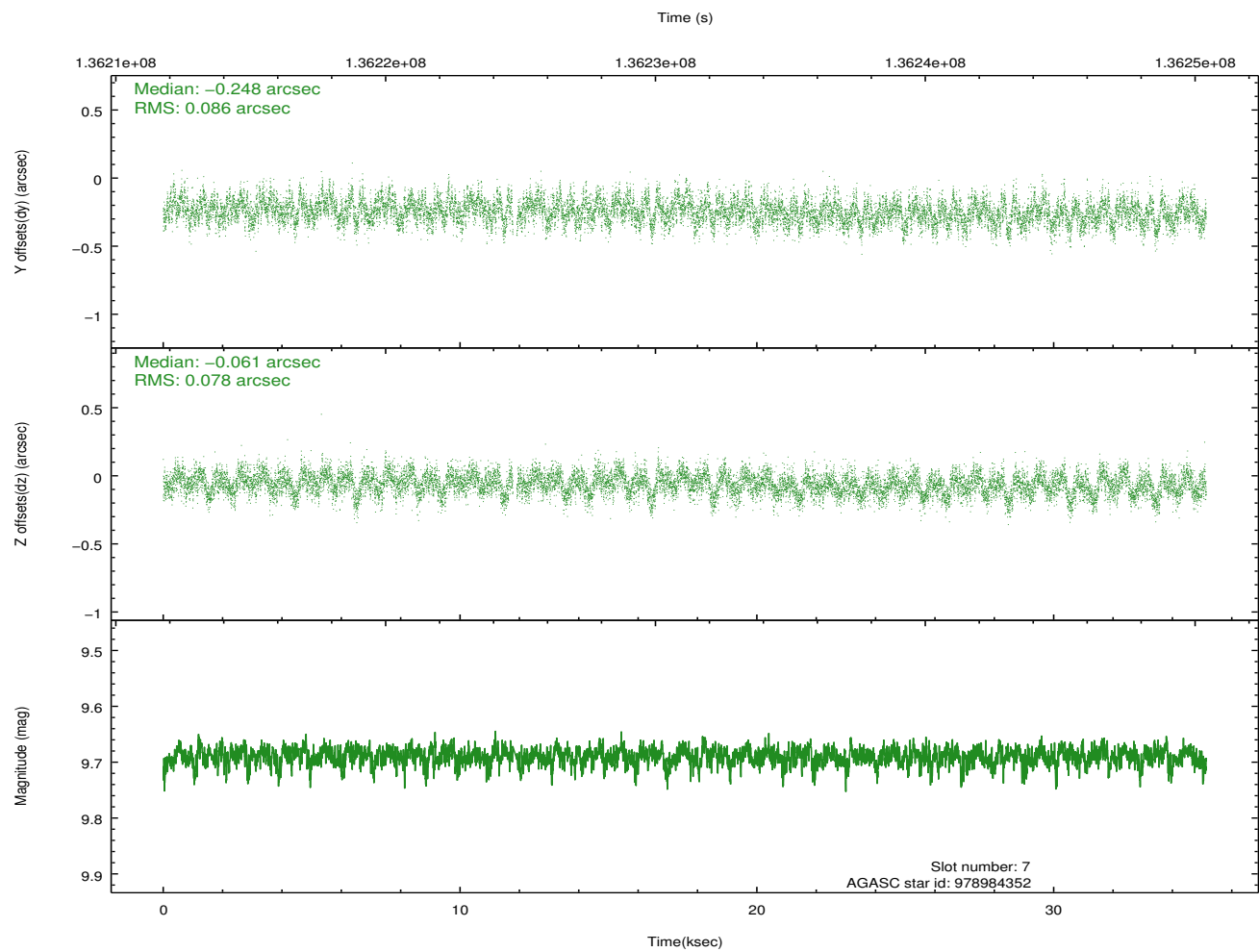
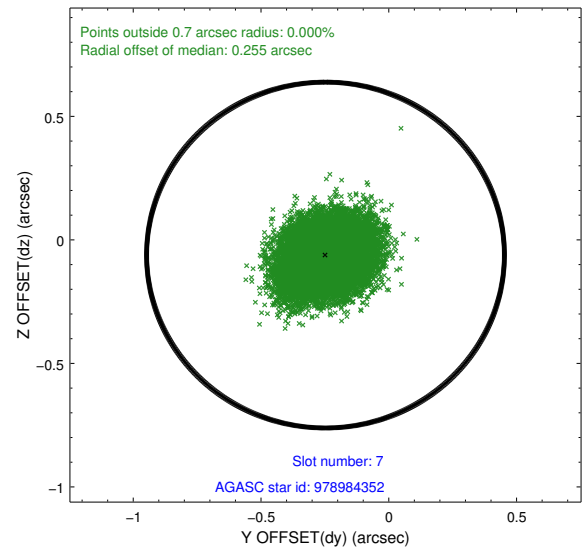
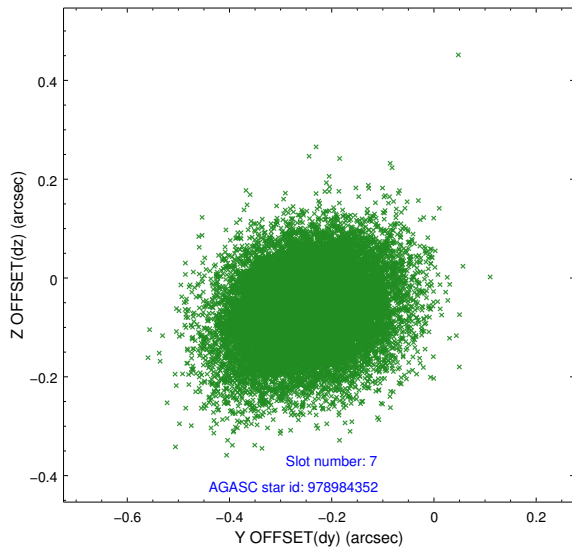
2.4.3 Slot 5



2.4.4 Slot 6

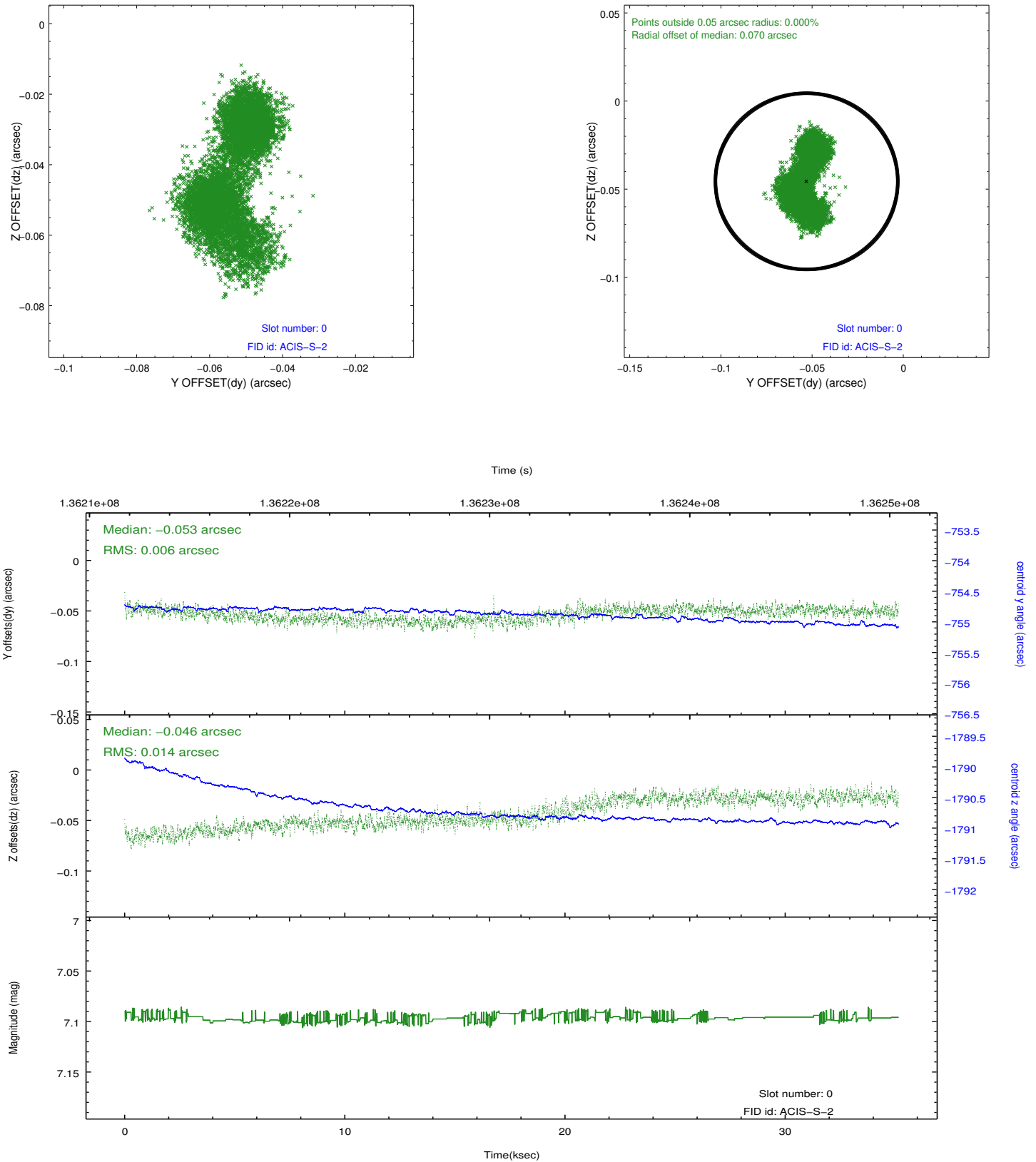


2.4.5 Slot 7

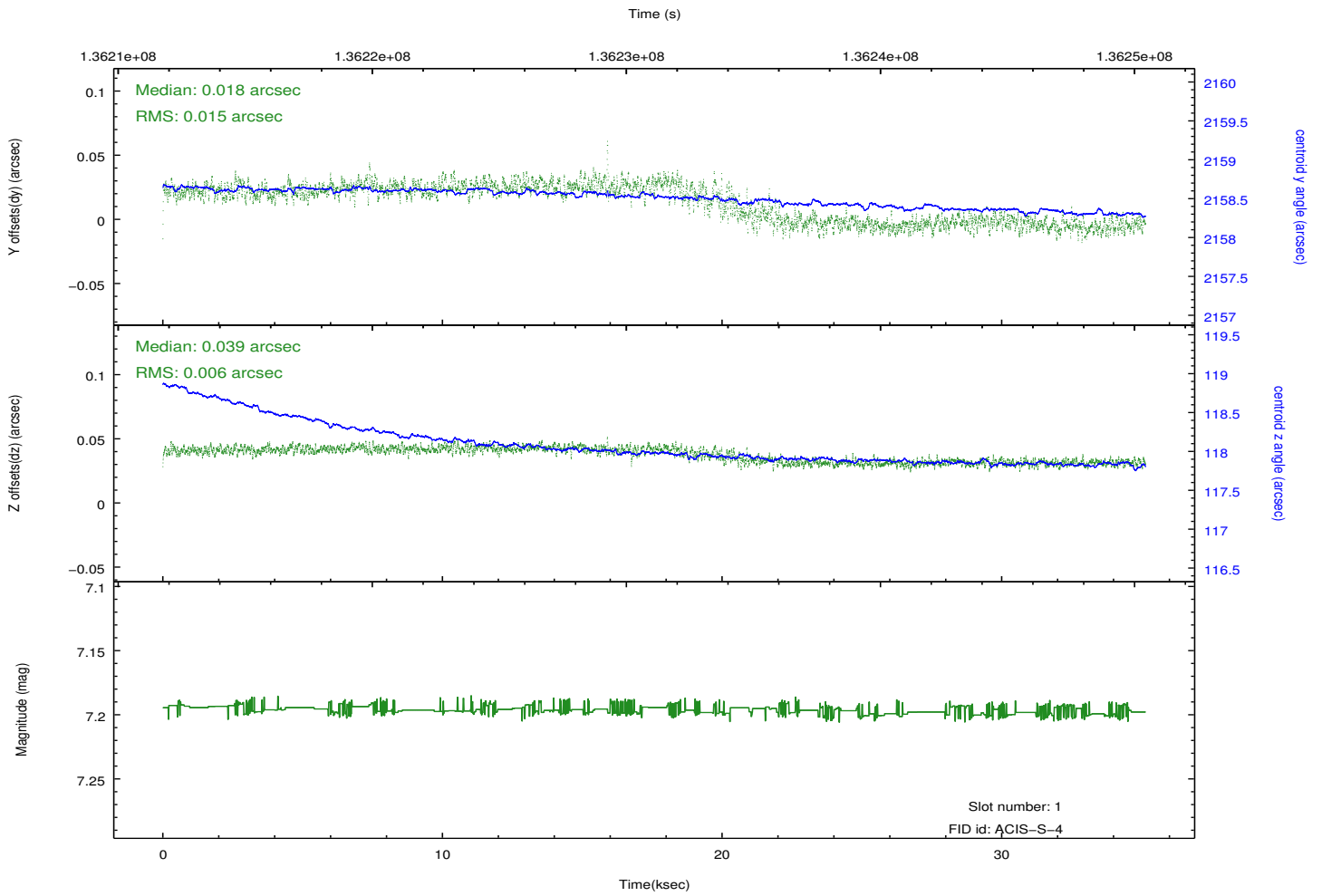
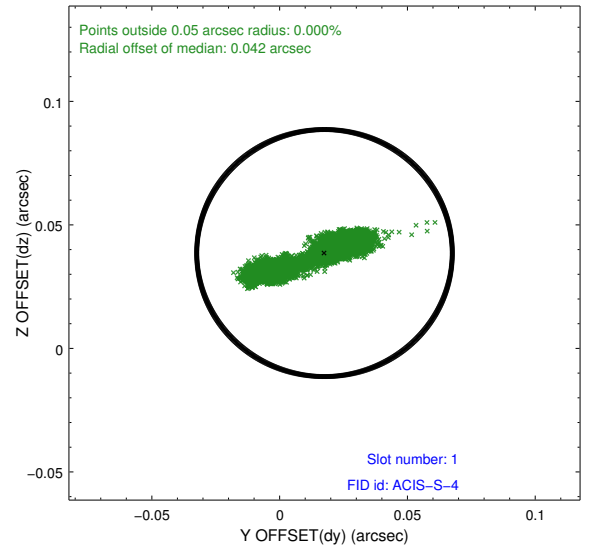
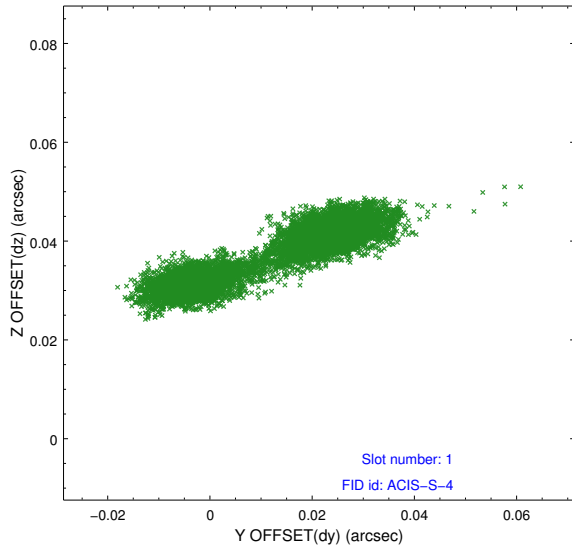


2.5 FID Slots

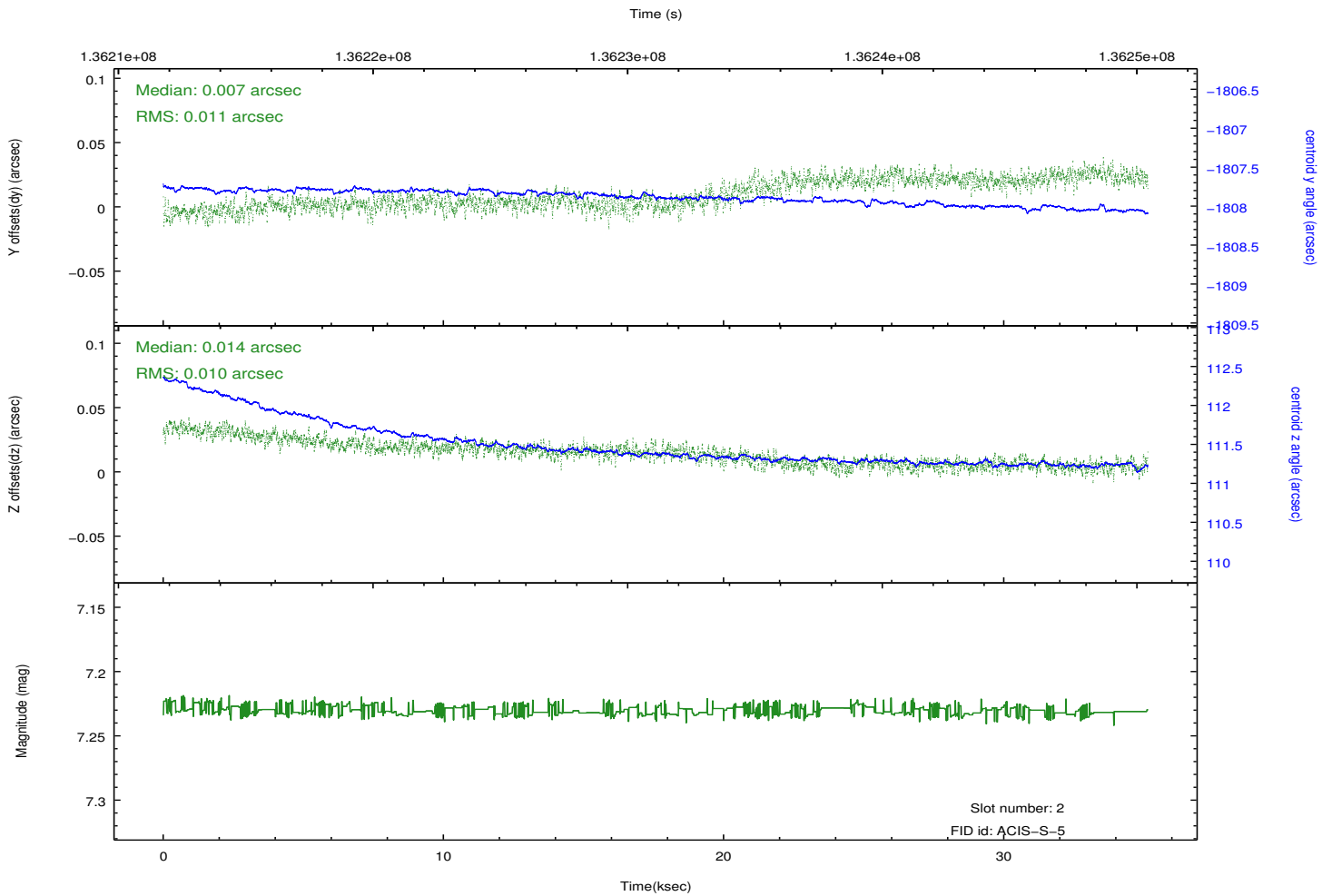
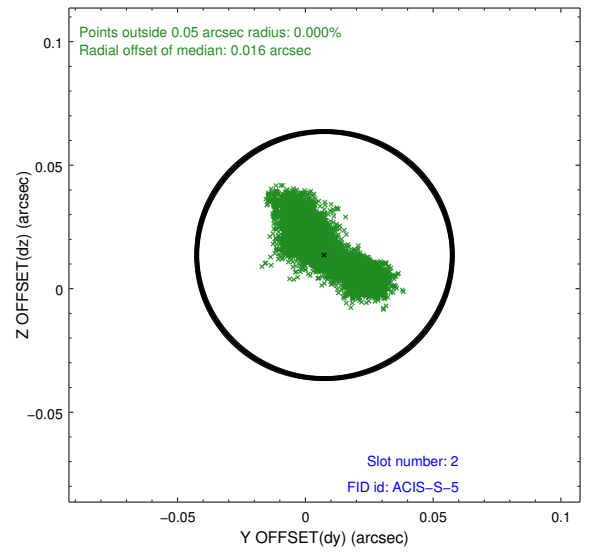
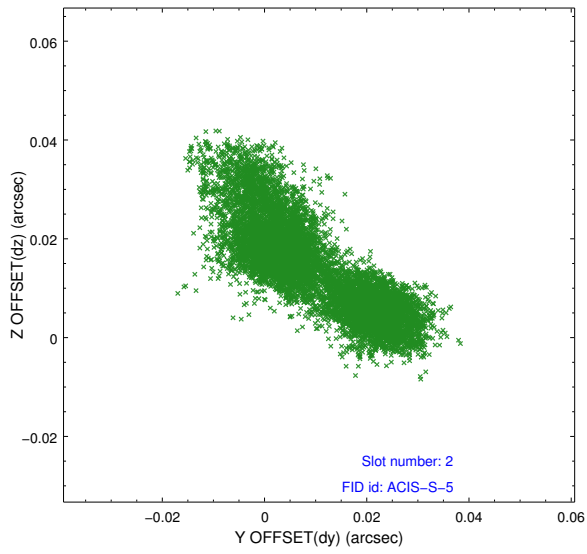
2.5.1 Slot 0



2.5.2 Slot 1



2.5.3 Slot 2

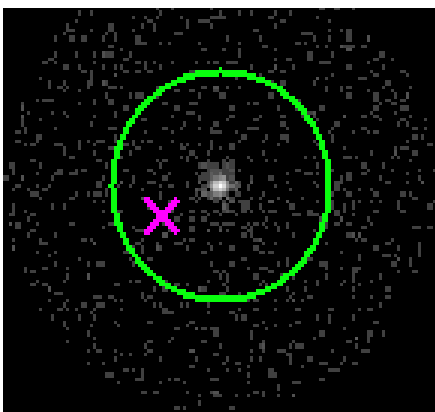


3 Gratings

3.1 HEG Arm



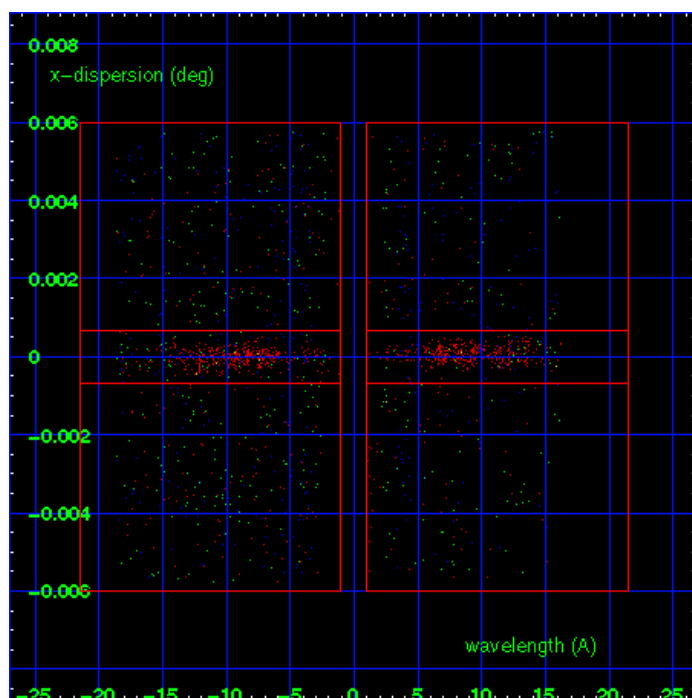
HEG Order Sort 123



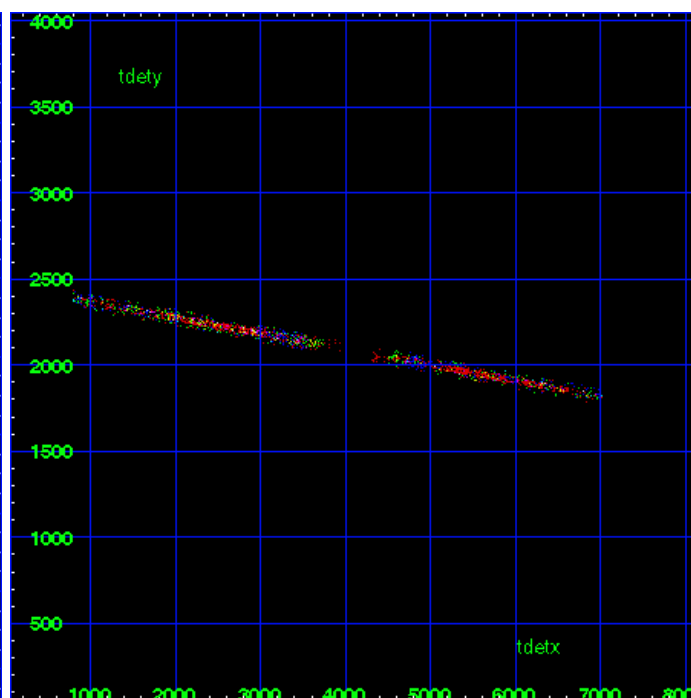
HEG Zero Order



HEG Order Sort ALL

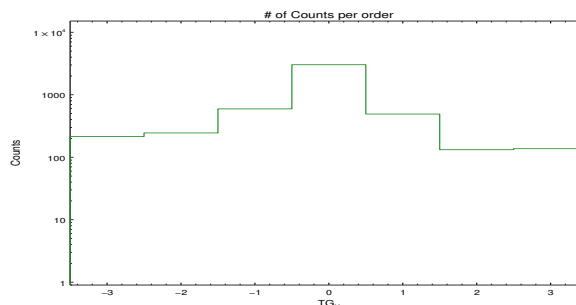


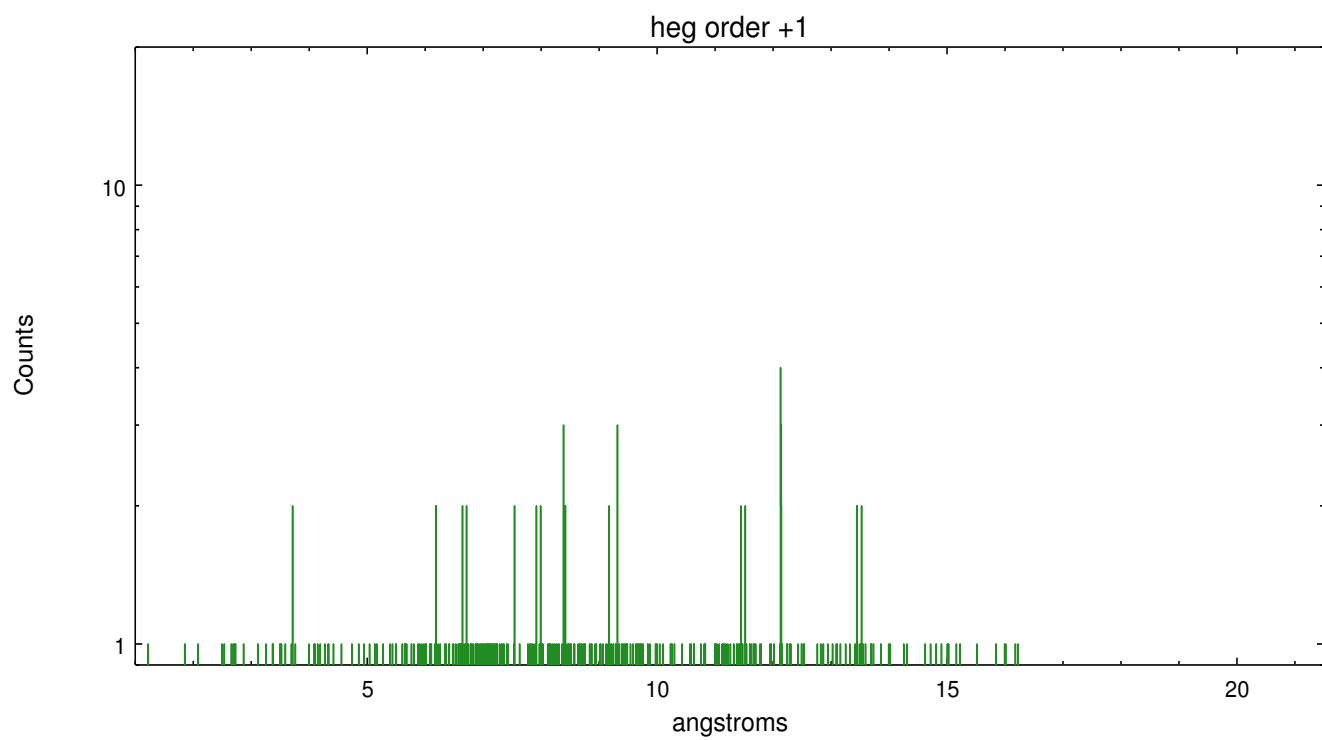
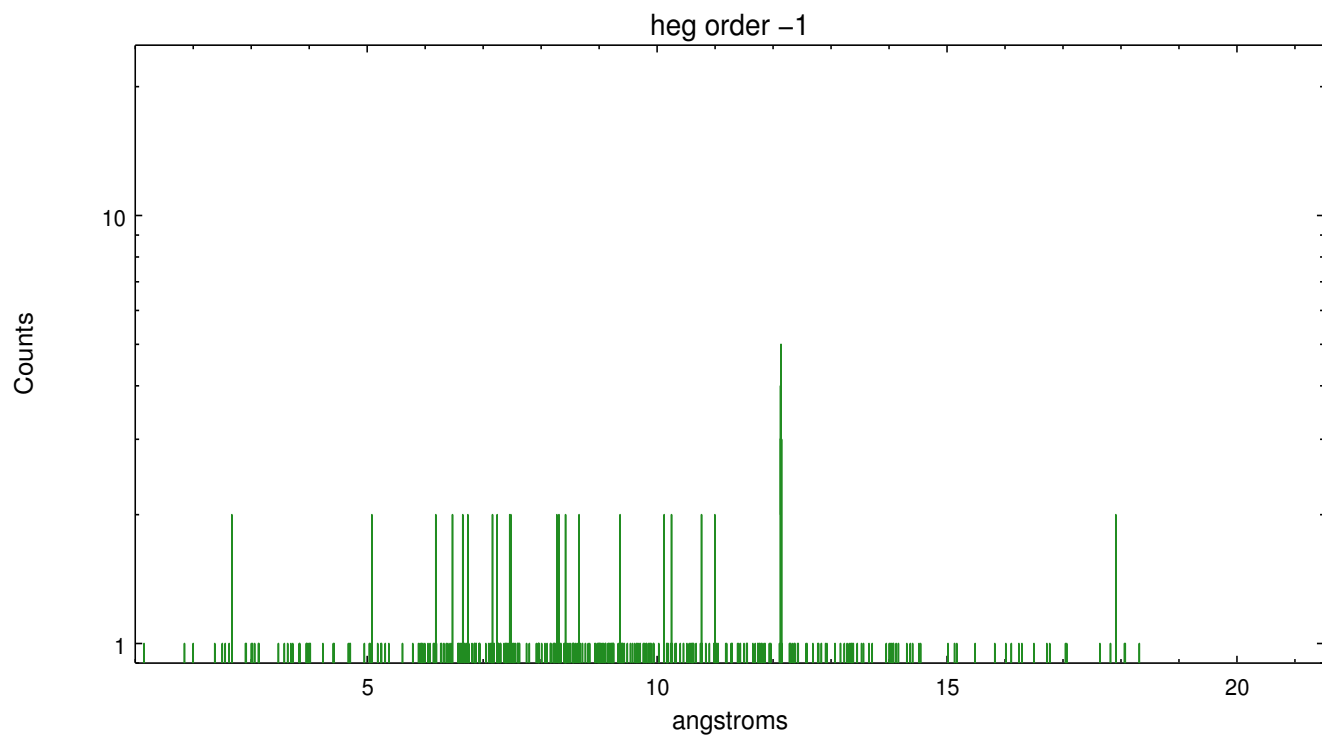
Spot Image HEG



Full Detector HEG

	order -3	order -2	order -1	order 0	order 1	order 2	order 3
Events	214	245	594	3027	491	132	137

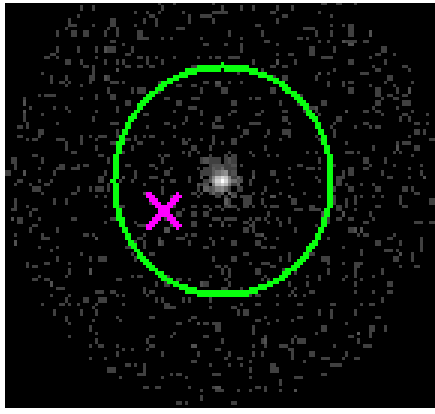




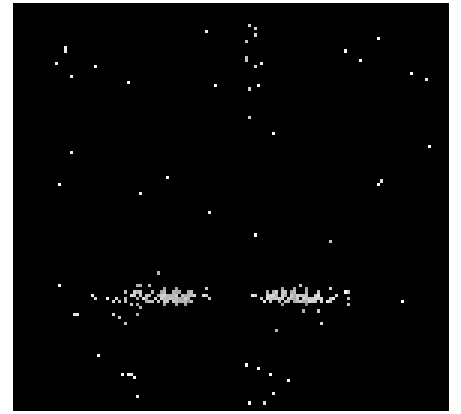
3.2 MEG Arm



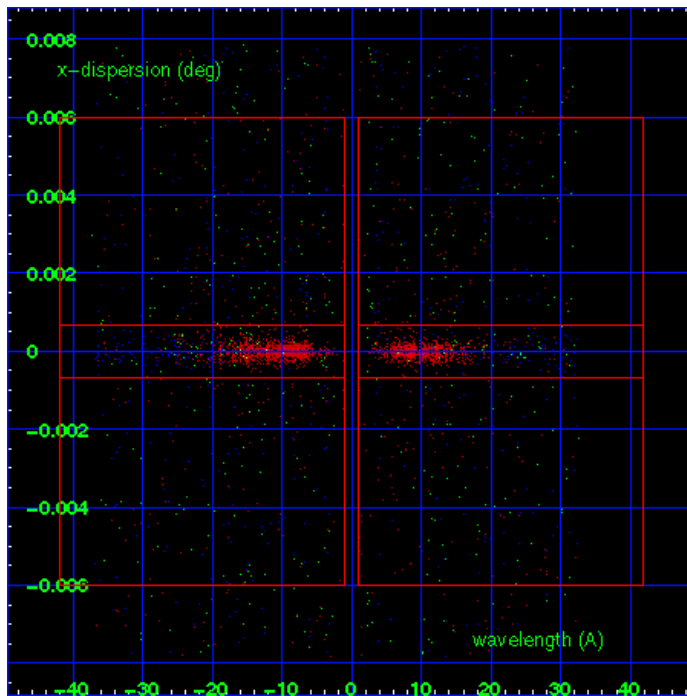
MEG Order Sort 123



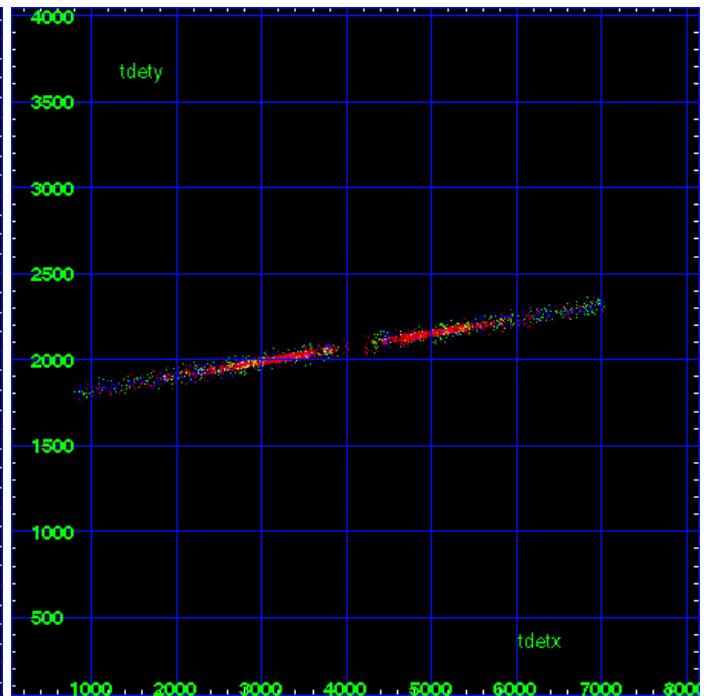
MEG Zero Order



MEG Order Sort ALL

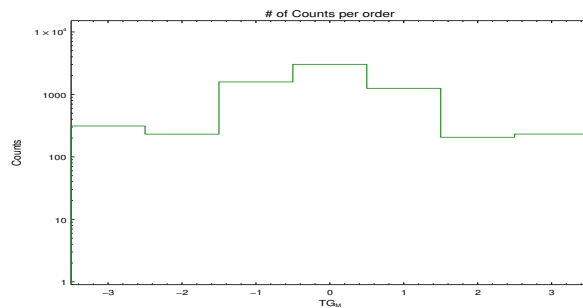


Spot Image MEG

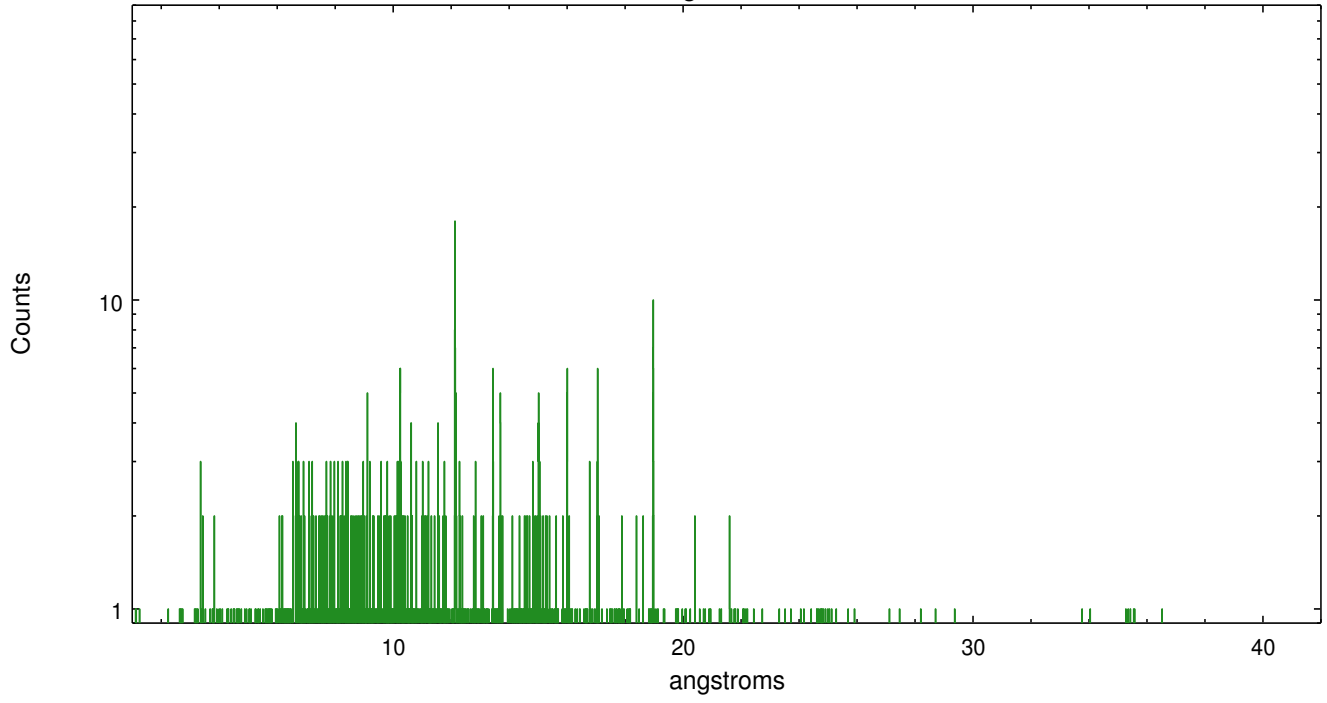


Full Detector MEG

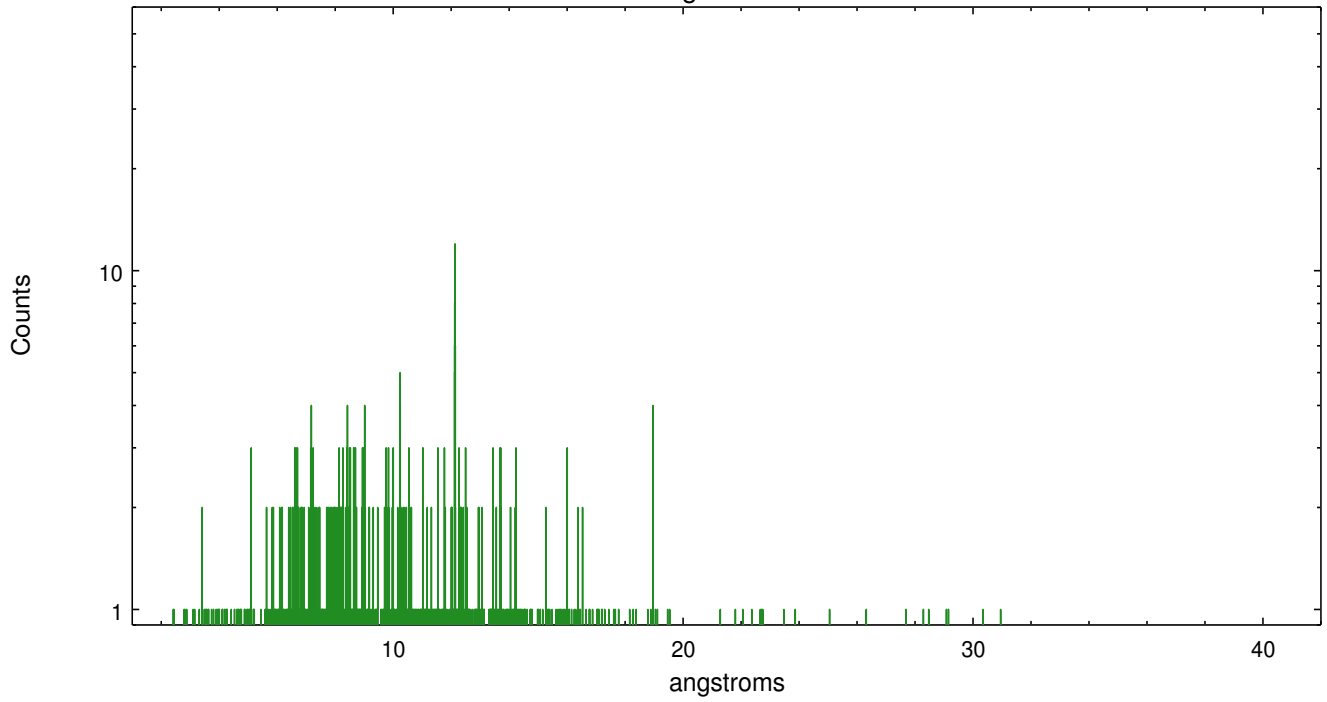
	order -3	order -2	order -1	order 0	order 1	order 2	order 3
Events	312	231	1582	3027	1251	206	232



meg order -1



meg order +1



A Summary

A.1 Status

V&V Scientist	Joy Nichols
V&V Date (YYYY-MM-DD)	2012.10.09
V&V Edition	1
V&V Disposition and Status	OK
V&V Charge Time	34.962

A.2 Comments