

# V&V Reference Report

## L2 ASCDS Version : 8.4.5

Observation 2576 - L2 Version 3  
Chandra X-Ray Center

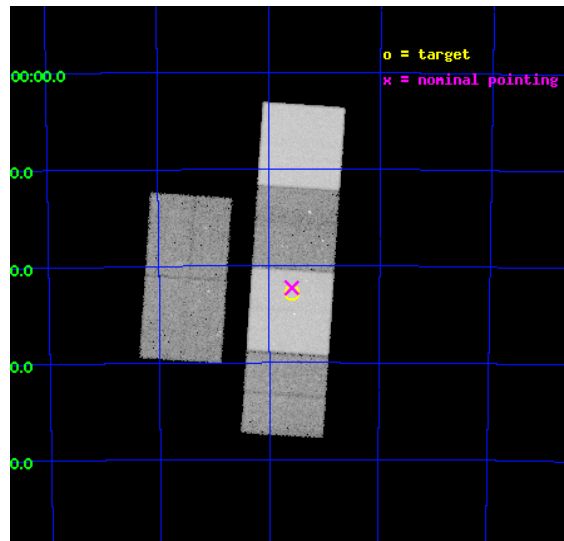
L2 Processing Date : Oct 20 2012

## Contents

<b>1</b>	<b>Front</b>	<b>2</b>
<b>2</b>	<b>OBI</b>	<b>3</b>
2.1	OBI . . . . .	3
2.1.1	Images . . . . .	3
2.1.2	Bias . . . . .	3
2.1.3	Parameters . . . . .	4
2.1.4	Events . . . . .	4
2.2	Compared Parameters . . . . .	5
2.3	Aspect . . . . .	6
2.4	Star Slots . . . . .	9
2.4.1	Slot 3 . . . . .	9
2.4.2	Slot 4 . . . . .	10
2.4.3	Slot 5 . . . . .	11
2.4.4	Slot 6 . . . . .	12
2.4.5	Slot 7 . . . . .	13
2.5	FID Slots . . . . .	14
2.5.1	Slot 0 . . . . .	14
2.5.2	Slot 1 . . . . .	15
2.5.3	Slot 2 . . . . .	16
<b>A</b>	<b>Summary</b>	<b>17</b>
A.1	Status . . . . .	17
A.2	Comments . . . . .	17

# 1 Front

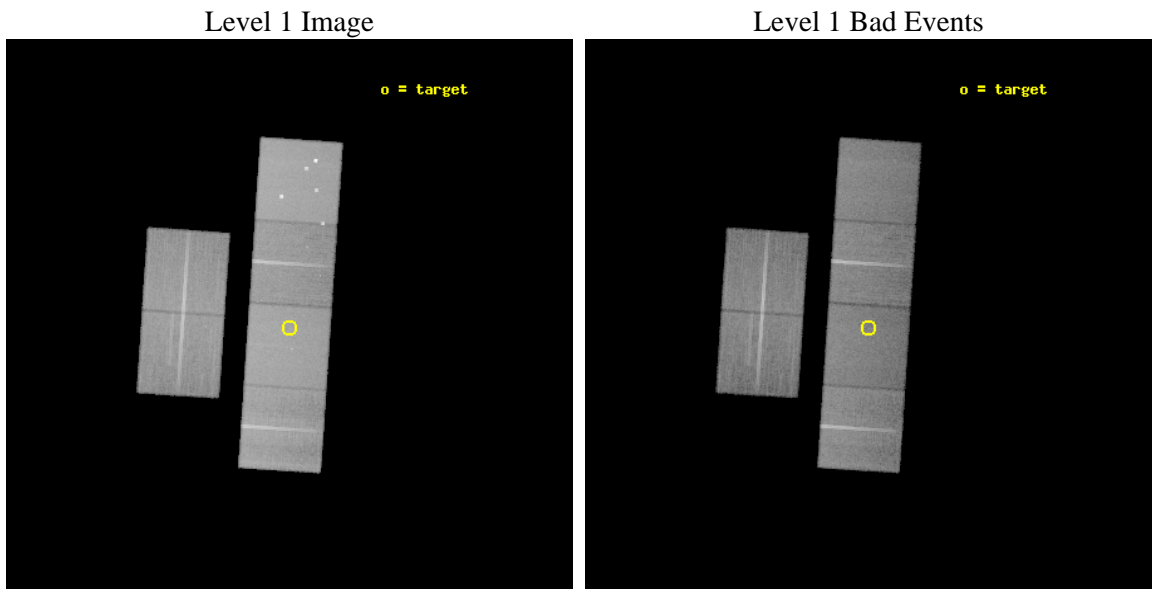
seq_num	200184	Sequence number
obs_id	2576	Observation id
title	INVESTIGATING COLLIDING WINDS AND MAGNETISED STARS IN YOUNG PLANETARY NEBULAE IMAGED WITH HST	Proposal title
observer	Dr. Raghvendra Sahai	Principal investigator
object	MYCN 18	Source name
dtcycle	0	&#160
cycle	P	events from which exps? Prim/Second/Both
ra_targ	204.894583	Observer's specified target RA [deg]
dec_targ	-67.380833	Observer's specified target Dec [deg]
ra_nom	204.89733459263	Nominal RA [deg]
dec_nom	-67.371249435823	Nominal Dec [deg]
roll_nom	93.8392087673	Nominal Roll [deg]
revision	3	Processing version of data
ontime	39963.963445395	Sum of GTIs [s]
livetime	39457.91567684	Livetime [s]
ontime2	39960.763525099	Sum of GTIs [s]
ontime3	39963.840325385	Sum of GTIs [s]
ontime5	39963.922405392	Sum of GTIs [s]
ontime6	39963.881365389	Sum of GTIs [s]
ontime7	39963.963445395	Sum of GTIs [s]
ontime8	39963.799285412	Sum of GTIs [s]
l2events	415265	Number of level 2 events



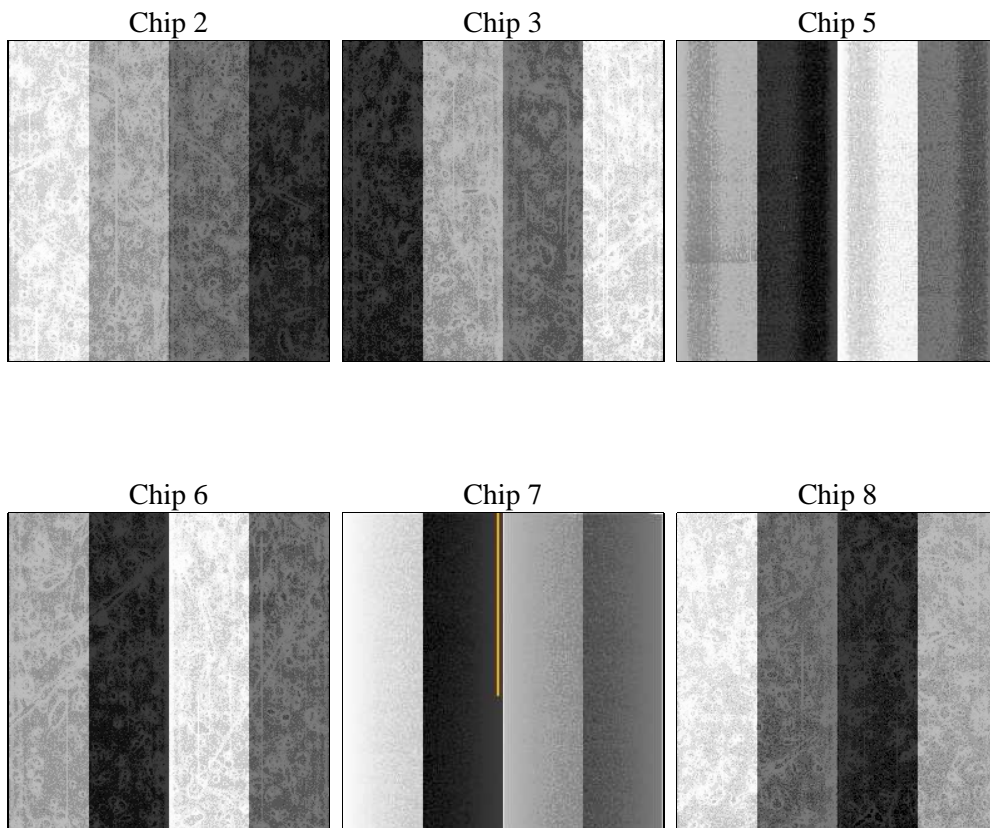
## 2 OBI

### 2.1 OBI

#### 2.1.1 Images



#### 2.1.2 Bias



### 2.1.3 Parameters

obi_num	1	Obi number	sched_exp_time	40000.000000	[s] Scheduled observation exposure time
ascdsver	8.4.5	Processing system revision	ontime	39963.963445395	Sum of GTIs [s]
caldbver	4.5.2	&#160	ontime2	39960.763525099	Sum of GTIs [s]
date	2012-10-20T17:39:58	Date and time of file creation	ontime3	39963.840325385	Sum of GTIs [s]
revision	3	Processing version of data	ontime5	39963.922405392	Sum of GTIs [s]
			ontime6	39963.881365389	Sum of GTIs [s]
			ontime7	39963.963445395	Sum of GTIs [s]
			ontime8	39963.799285412	Sum of GTIs [s]
			l1events	1824302	Number of level 1 events

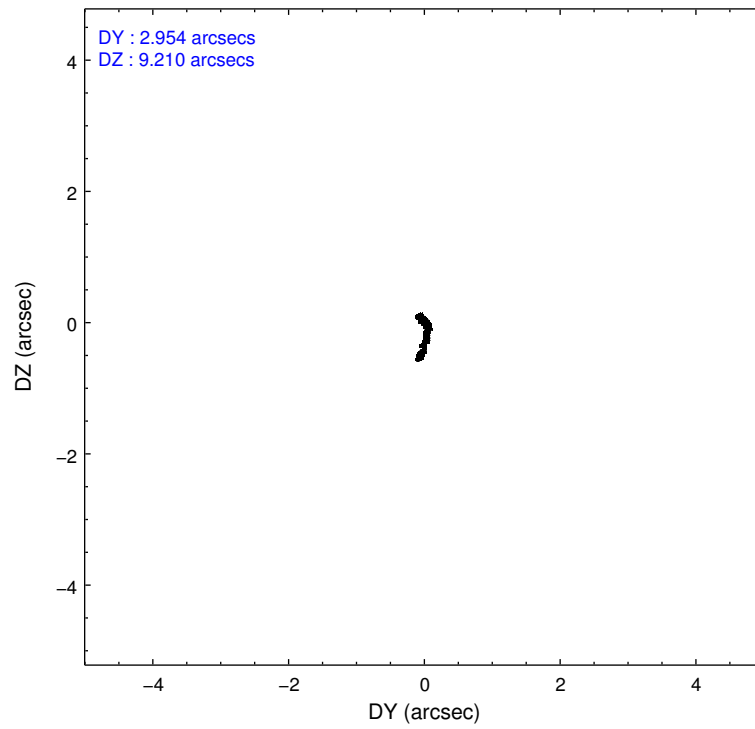
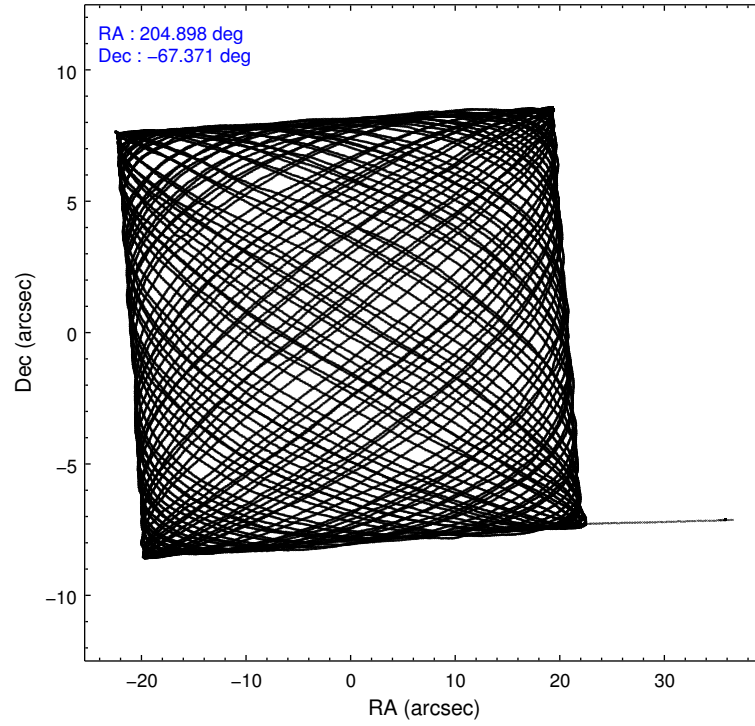
### 2.1.4 Events

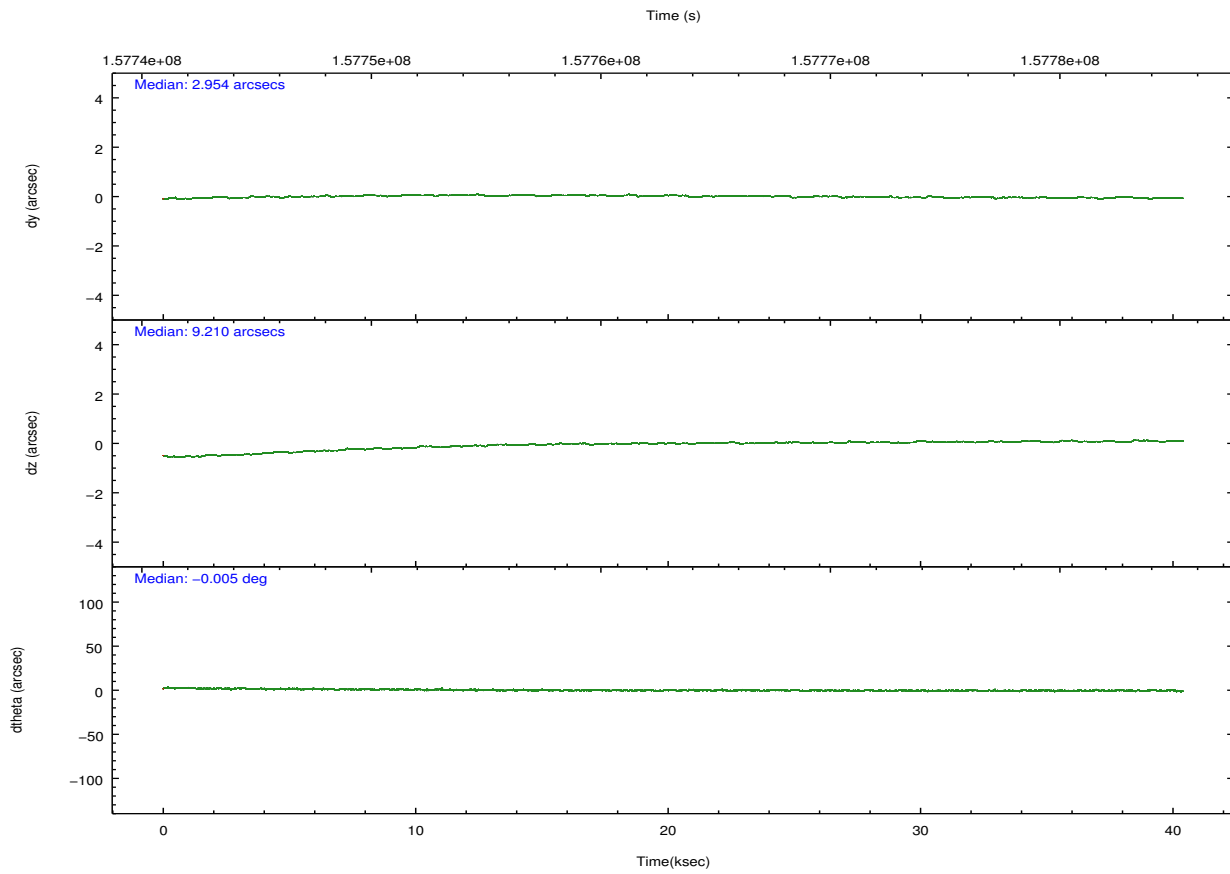
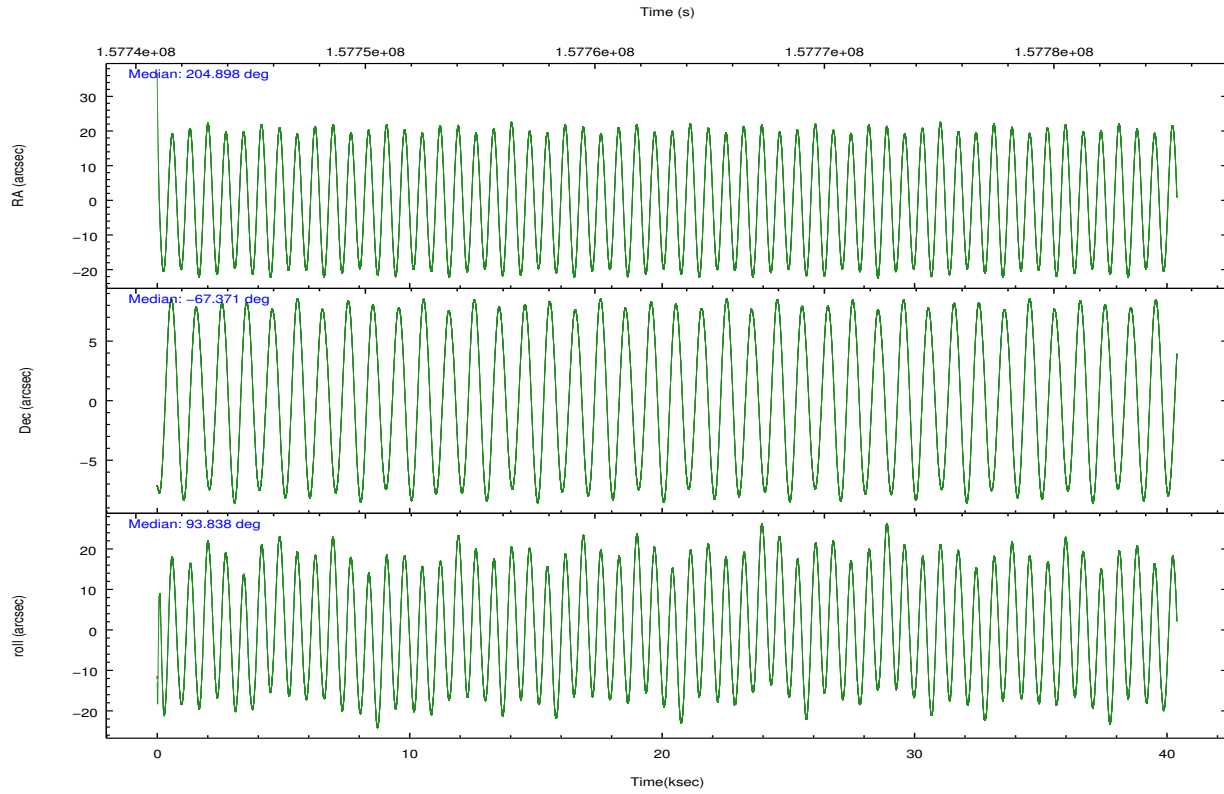
	ccd 2	ccd 3	ccd 5	ccd 6	ccd 7	ccd 8		ccd 2	ccd 3	ccd 5	ccd 6	ccd 7	ccd 8
level 1 events	262256	249973	392896	258078	341436	319663	grade 0 events	14101	13049	31257	12988	13730	21245
rejected events	231525	220709	200865	226770	196910	253161		5%	5%	7%	5%	4%	6%
rejected %	88%	88%	51%	87%	57%	79%	grade 1 events	141	165	592	108	290	237
								0%	0%	0%	0%	0%	0%
							grade 2 events	6030	5503	55240	6314	28723	14588
								2%	2%	14%	2%	8%	4%
							grade 3 events	2839	2854	7898	3058	12872	6970
								1%	1%	2%	1%	3%	2%
							grade 4 events	2834	2887	7499	3010	12761	6647
								1%	1%	1%	1%	3%	2%
							grade 5 events	9987	10941	28163	11620	32430	14764
								3%	4%	7%	4%	9%	4%
							grade 6 events	4930	4974	90150	5945	76461	17055
								1%	1%	22%	2%	22%	5%
							grade 7 events	221394	209600	172097	215035	164169	238157
								84%	83%	43%	83%	48%	74%

## 2.2 Compared Parameters

Parameter	Planned	Actual	Parameter	Planned	Actual
Instrument	ACIS	ACIS	Obspar format version number	7	7
Detector	ACIS-235678	ACIS-235678	Obspar file type	PREDICTED	ACTUAL
Grating	NONE	NONE	Obspar update status	NONE	UPDATED
Data mode	FAINT	FAINT	Number of optional ACIS chips dropped	0	0
Observation mode	POINTING	POINTING	On-chip summing requested	N	N
[deg] Pointing RA	204.937564	204.8973345926278	Subarray requested	NONE	NONE
[deg] Pointing Dec	-67.393633	-67.371249435823	Alternating exposures requested	N	N
[deg] Pointing Roll	93.719736	93.83920876729975	[s] Primary exposure time	0.000000	3.2
[mm] SIM focus pos	-0.684267	-0.6828225247311905			
[mm] SIM defocus	0	0.001444936568705701			
[mm] SIM translation stage pos	-190.132523	-190.1400660498719			
[mm] SIM translation stage offset	0	0.00754346686406393			
[s] Observation start time (MET)	157743338.184000	157742257.29128			
Observation start date	2002-12-31T17:34:34	2002-12-31T17:17:37			
[s] Observation end time (MET)	157783338.184000	157783943.53052			
Observation end date	2003-01-01T04:41:14	2003-01-01T04:52:23			
Read mode	TIMED	TIMED			

## 2.3 Aspect



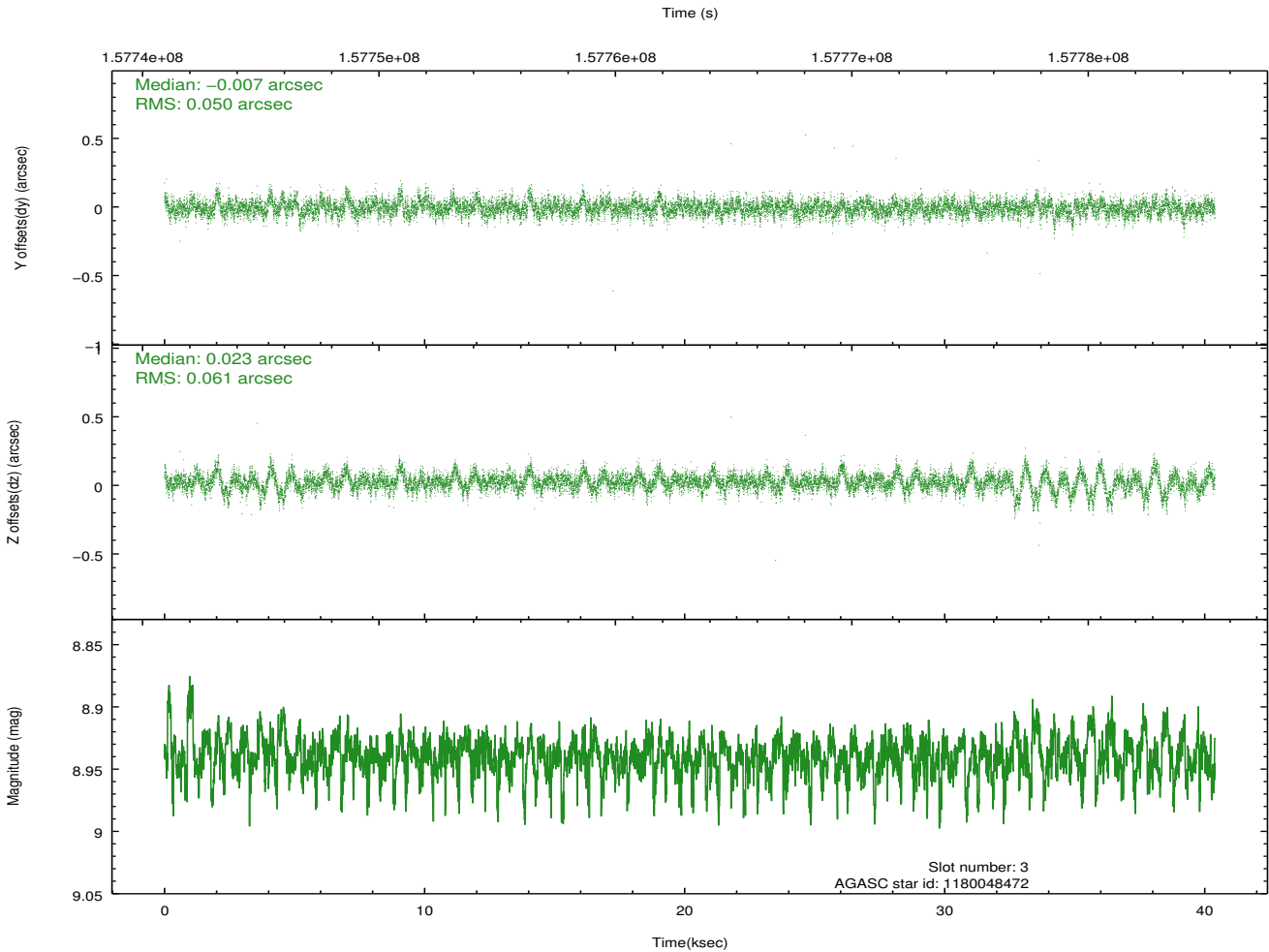
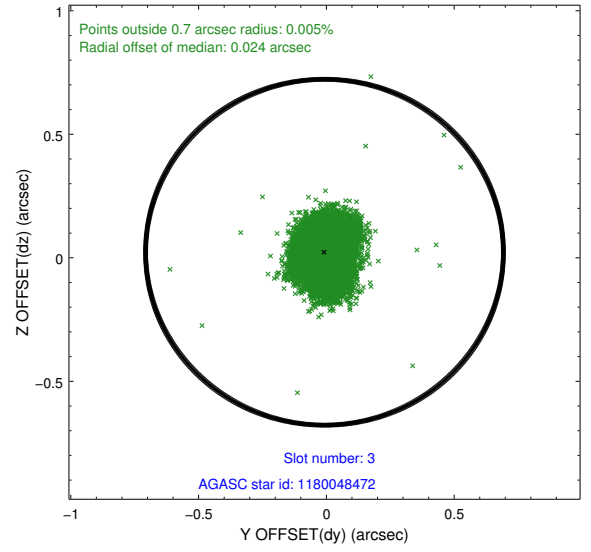
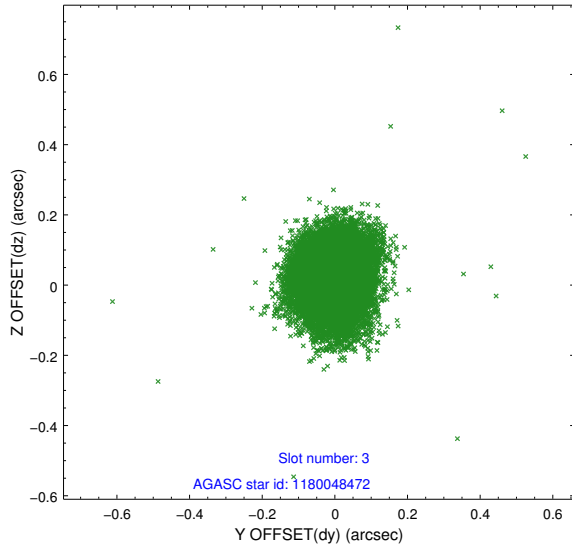


### Slot Statistics

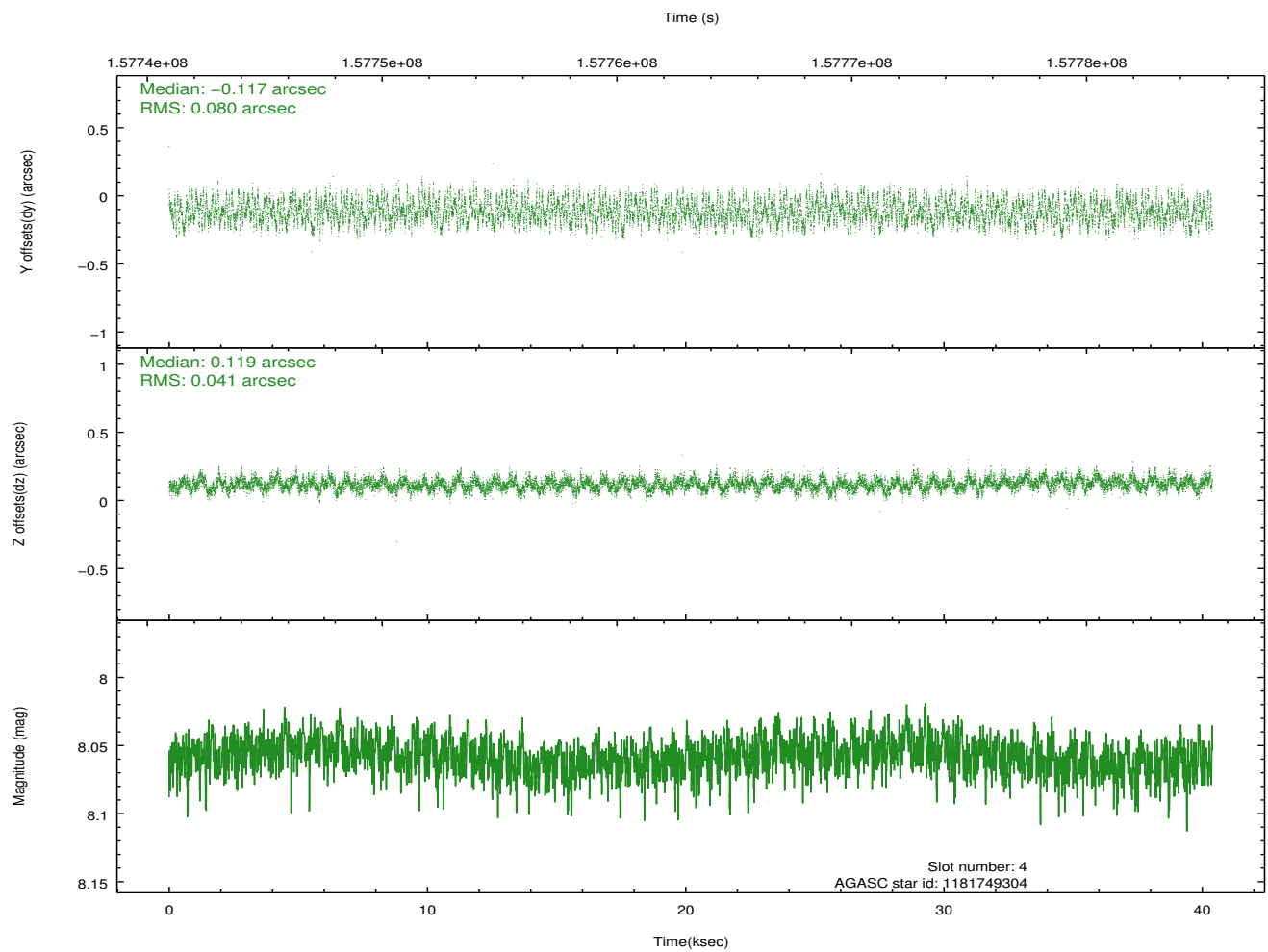
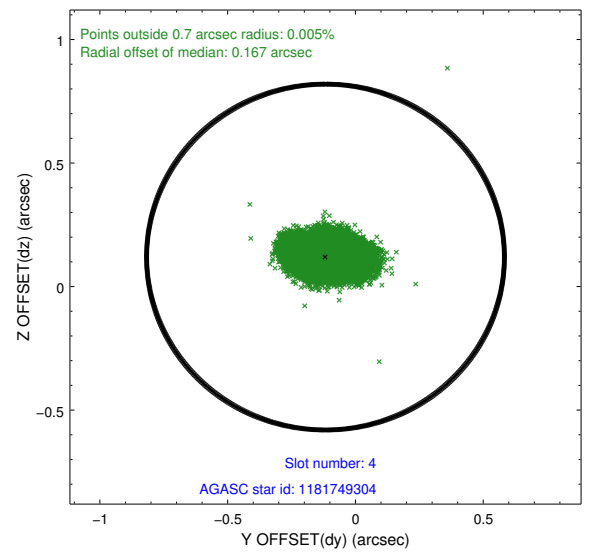
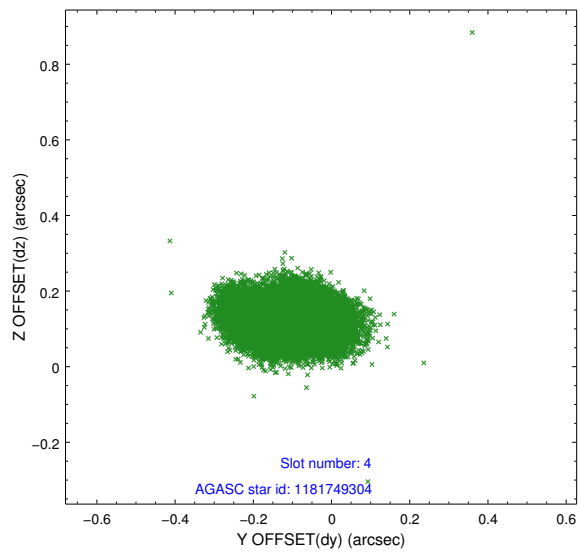
slot	status	id	mag	n_pts	med_dy	med_dz	dr1	dr2	ra	dec	mean_y	mean_z
0	FID	ACIS-S-1	7.20	9853	0.018	0.036	0.010	0.022	0.000000	0.000000	940.45	-1725.95
1	FID	ACIS-S-4	7.20	9850	-0.009	-0.029	0.007	0.013	0.000000	0.000000	2157.84	178.12
2	FID	ACIS-S-5	7.24	9851	-0.036	0.006	0.009	0.016	0.000000	0.000000	-1808.45	171.77
3	GUIDE	1180048472	8.94	19669	-0.007	0.023	0.080	0.142	205.070958	-66.928934	1657.20	-295.73
4	GUIDE	1181749304	8.06	19704	-0.117	0.119	0.097	0.155	206.326659	-66.754661	2145.77	-2116.59
5	GUIDE	1211498544	9.54	19691	0.123	-0.205	0.101	0.164	204.264385	-68.043073	-2278.72	1056.38
6	GUIDE	1211508992	9.11	19700	0.055	-0.058	0.082	0.130	204.311604	-67.711544	-1090.76	927.85
7	GUIDE	1211501128	10.11	19448	-0.057	0.127	0.120	0.205	206.769601	-67.951375	-2200.55	-2337.22

## 2.4 Star Slots

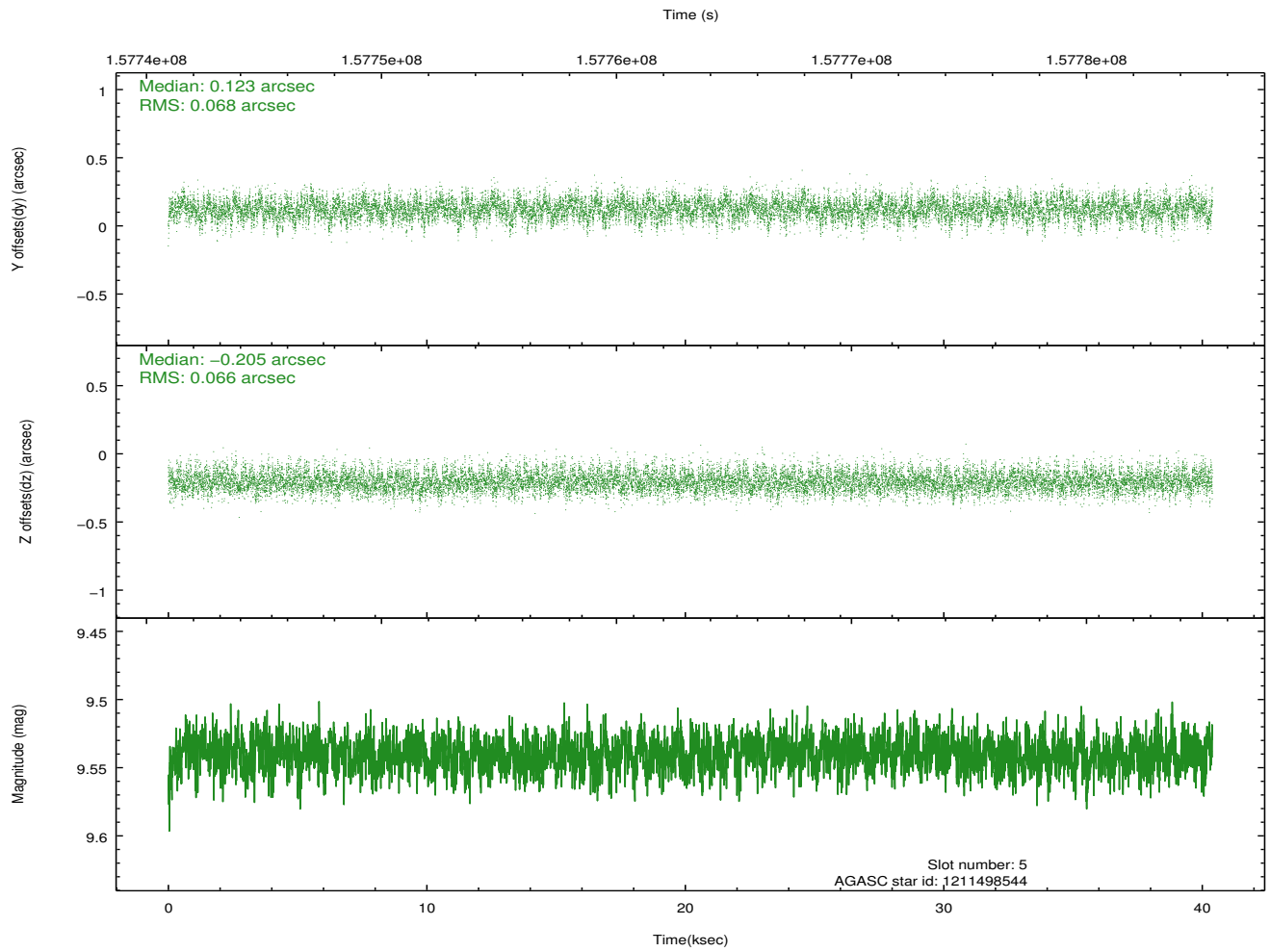
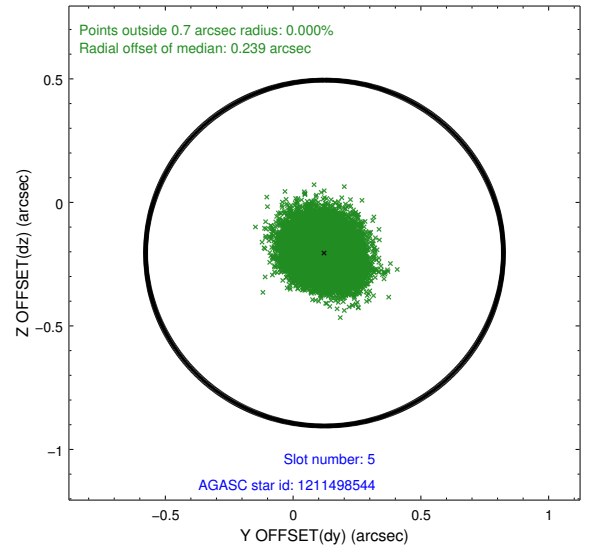
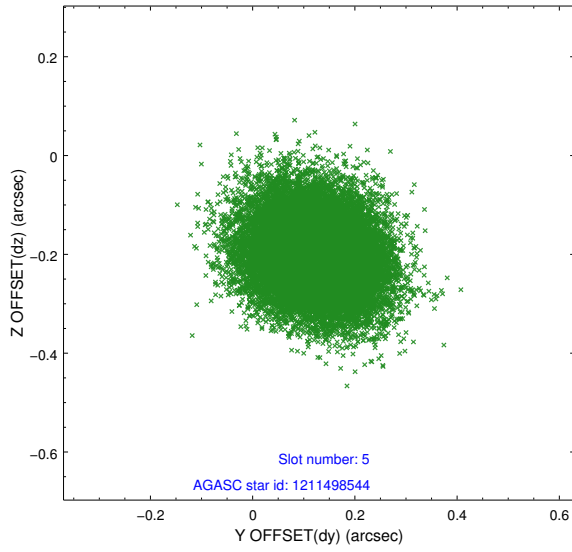
### 2.4.1 Slot 3



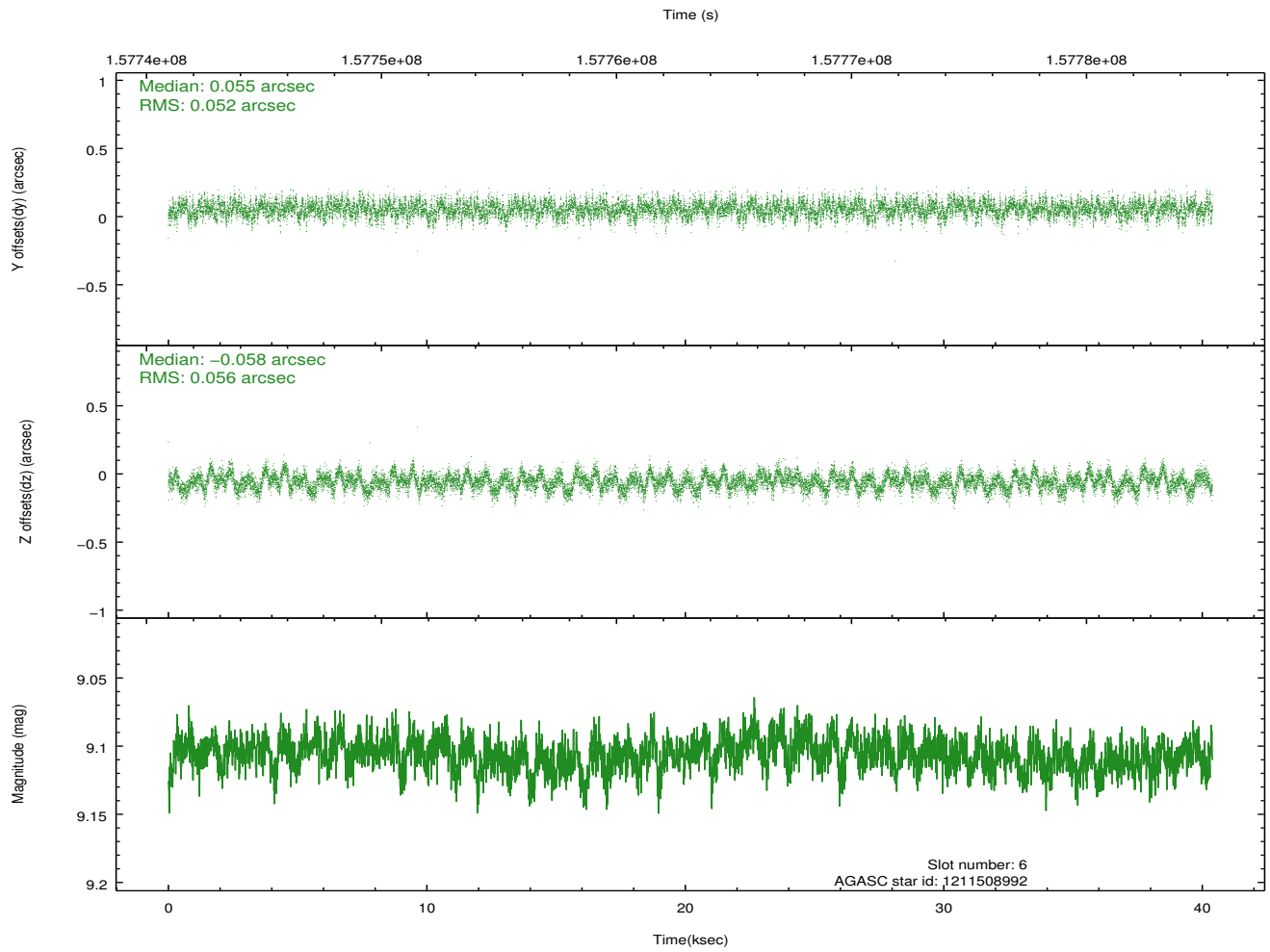
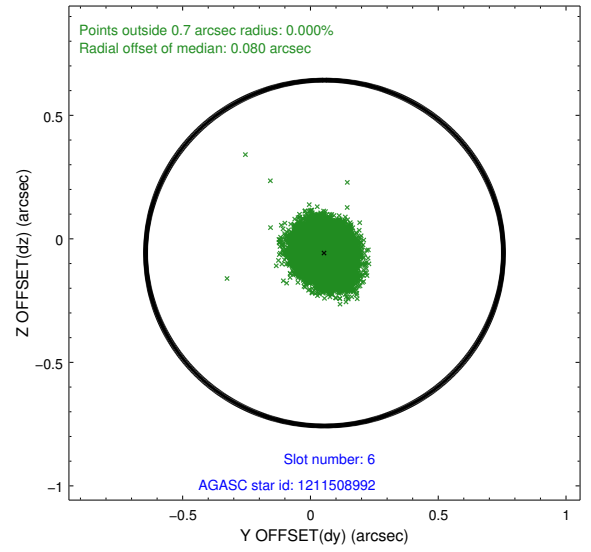
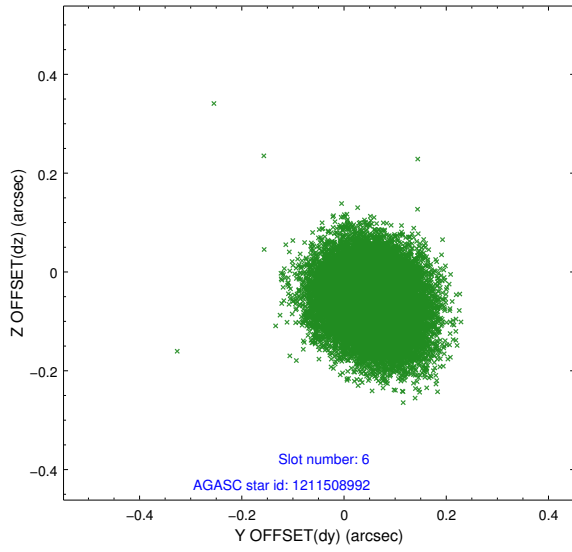
## 2.4.2 Slot 4



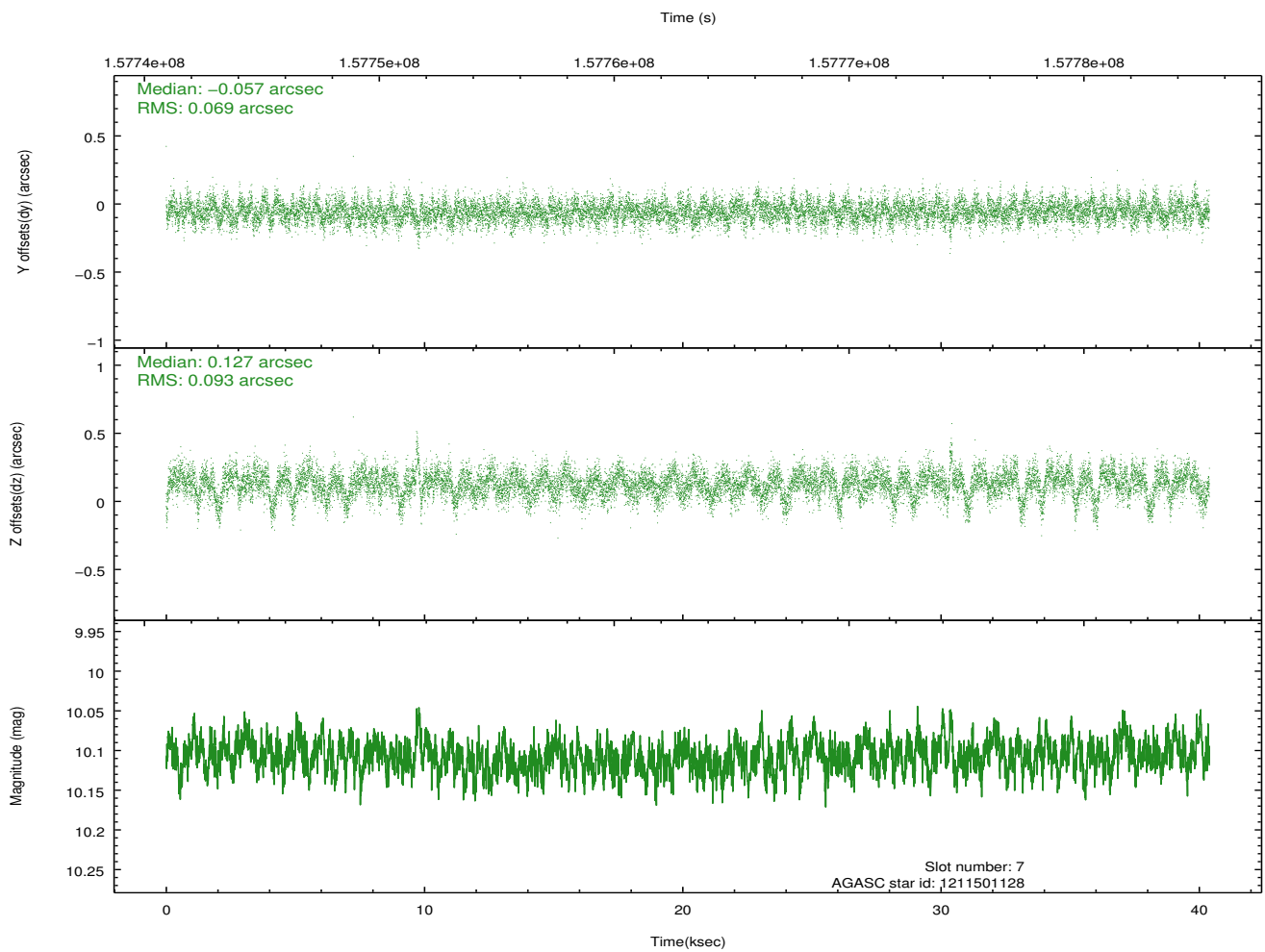
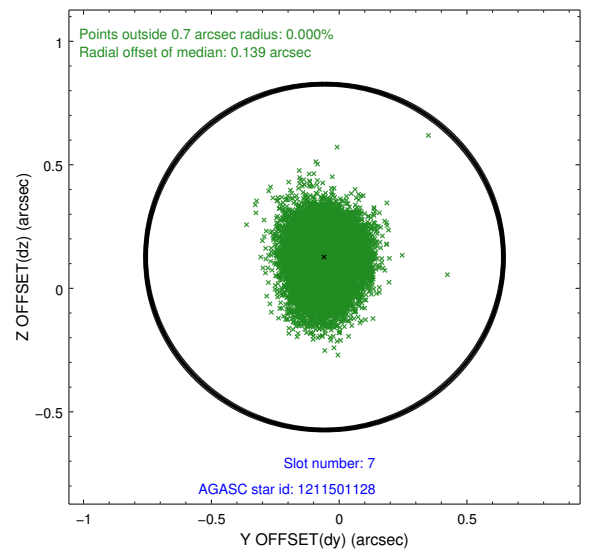
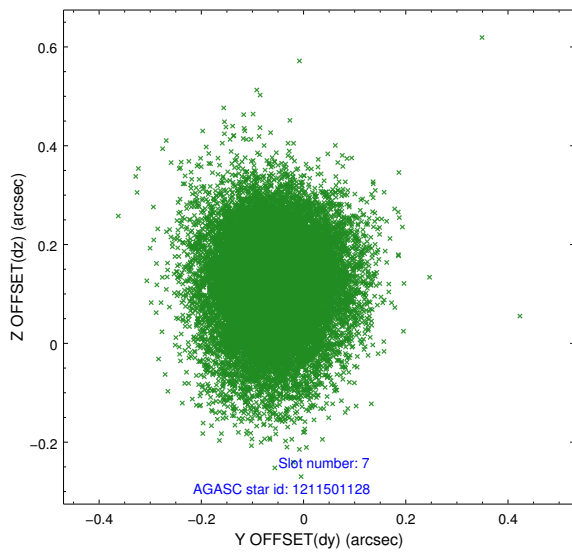
### 2.4.3 Slot 5



### 2.4.4 Slot 6

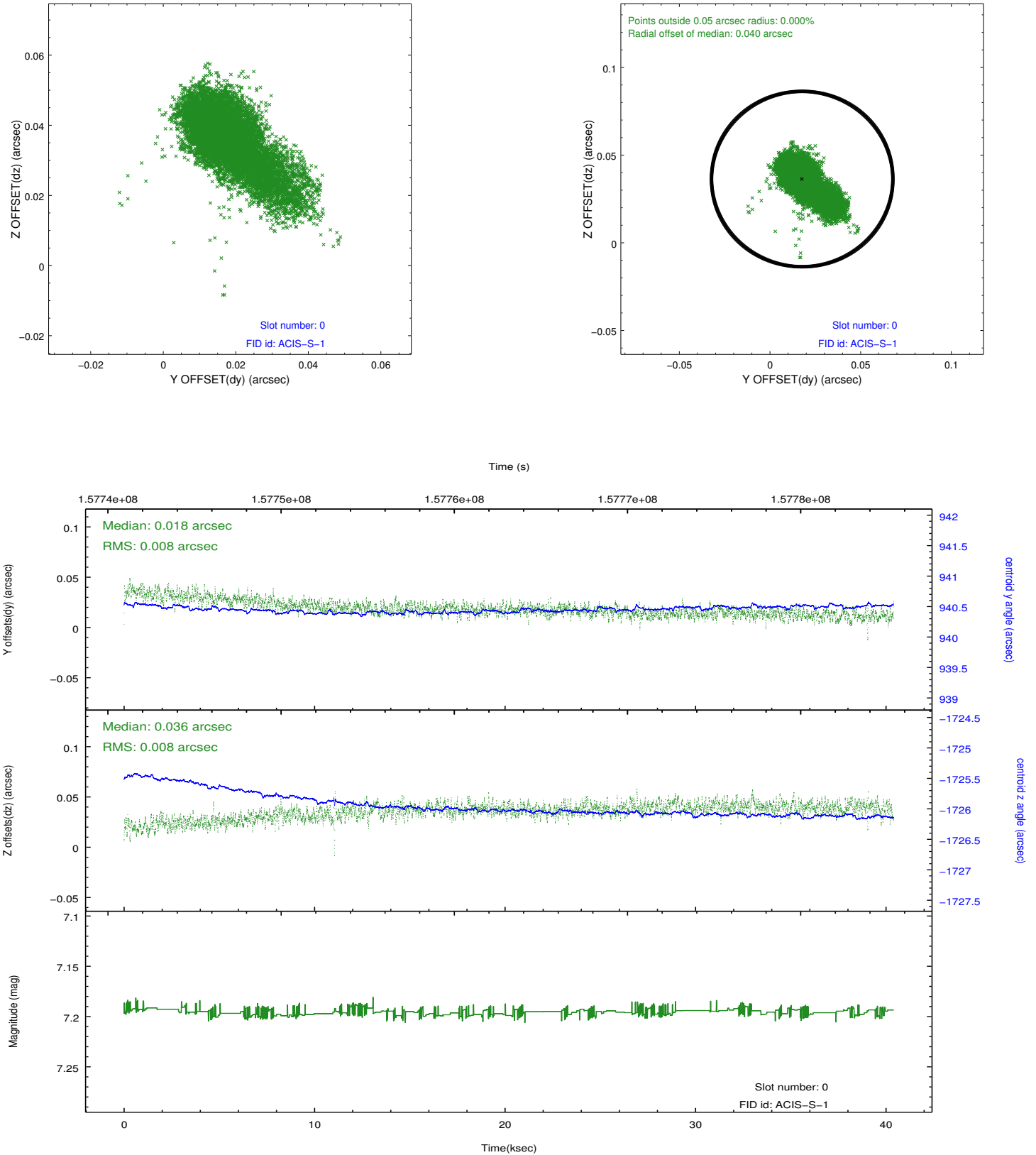


## 2.4.5 Slot 7

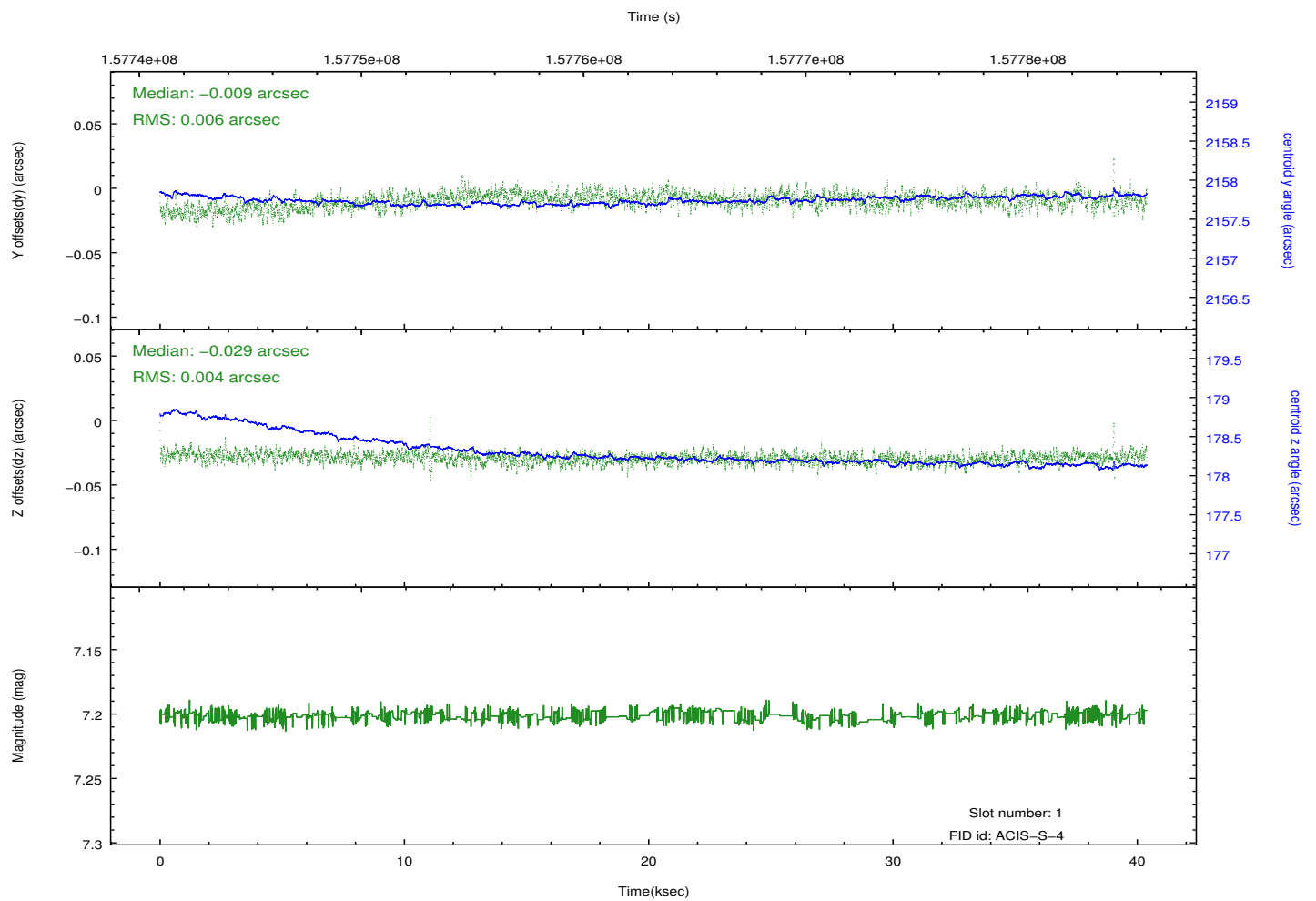
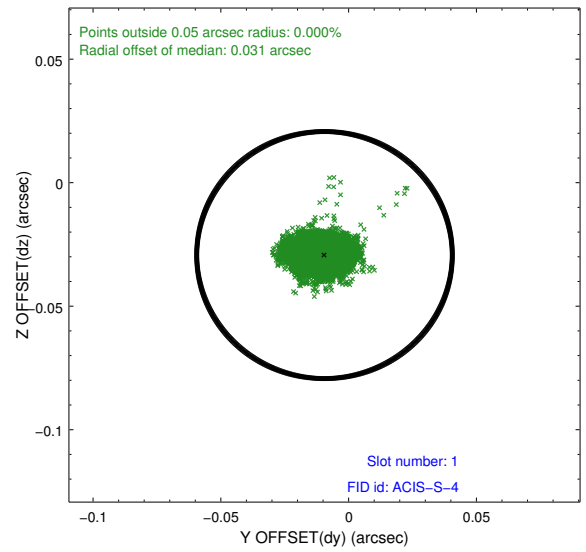
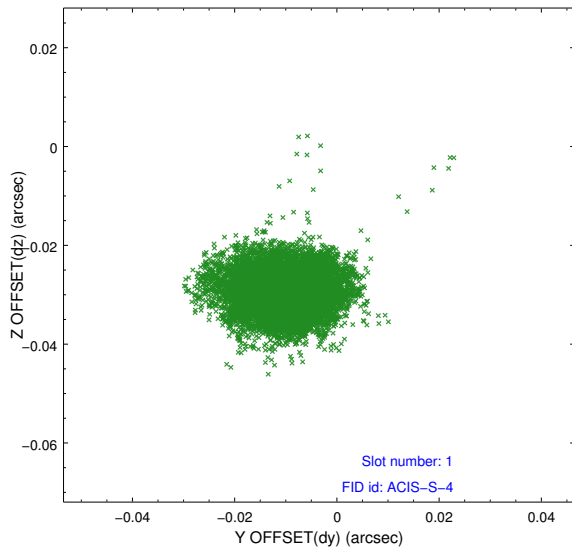


## 2.5 FID Slots

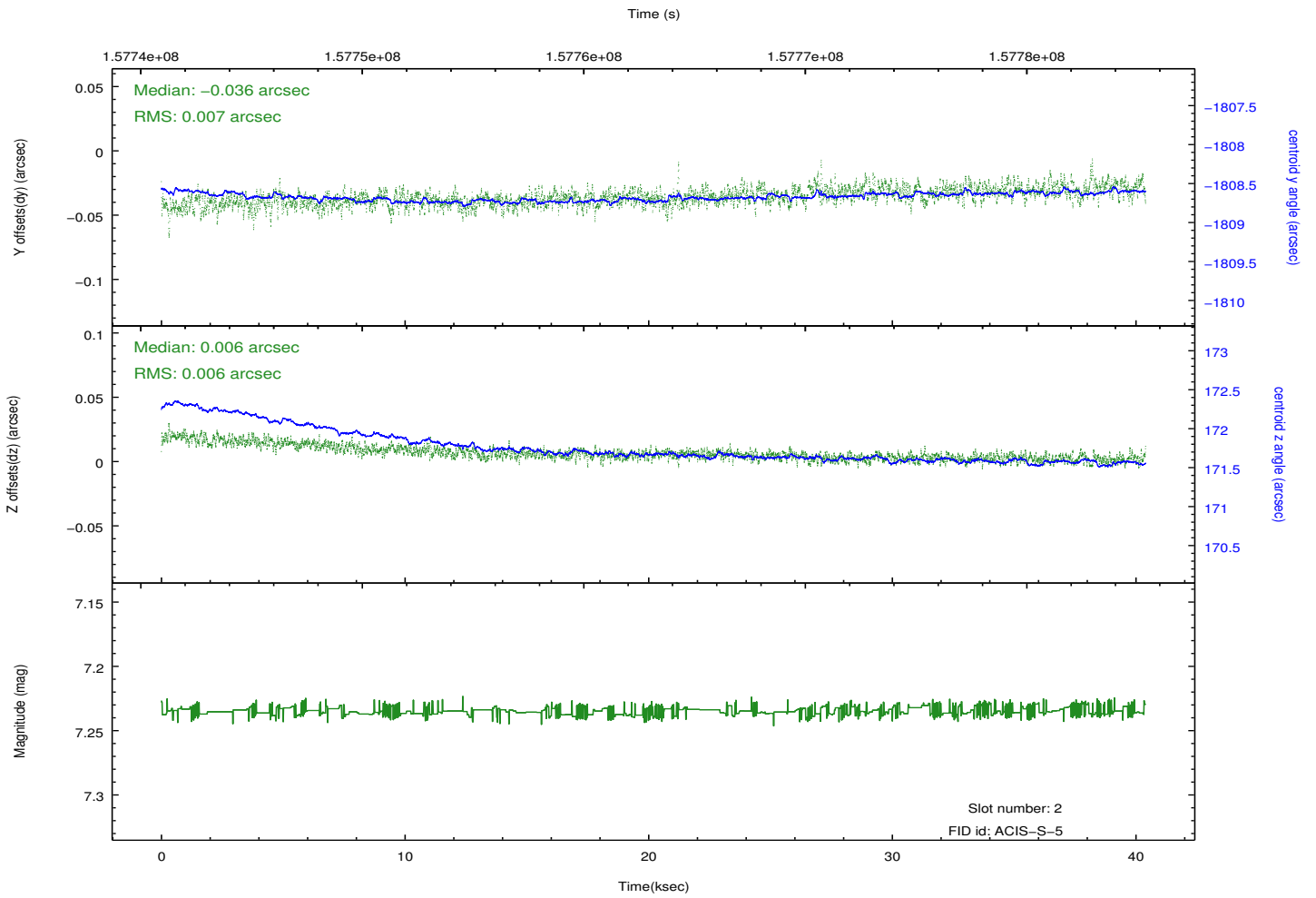
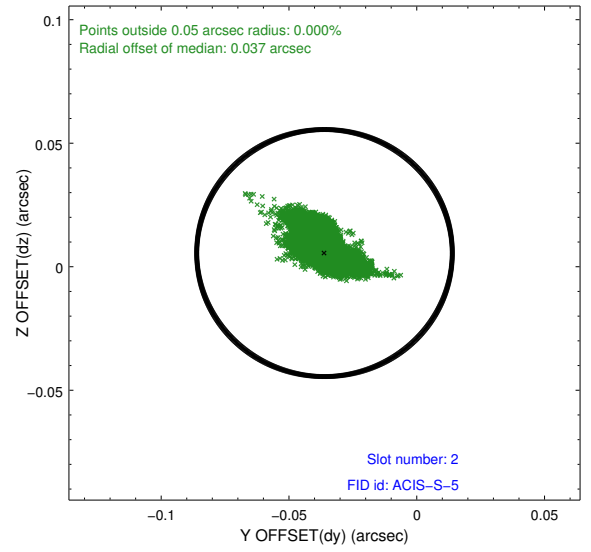
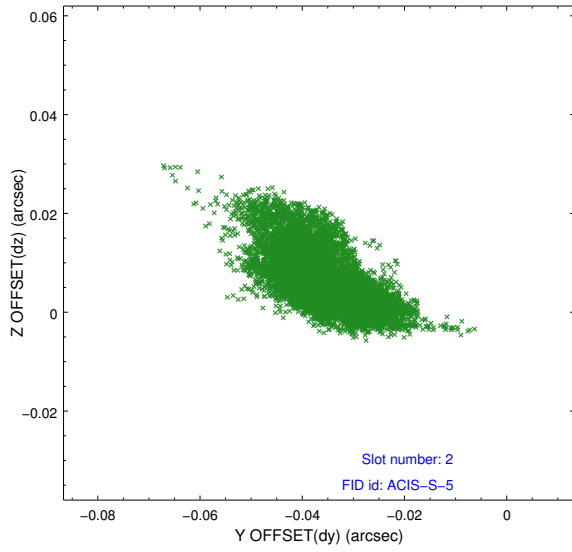
### 2.5.1 Slot 0



## 2.5.2 Slot 1



### 2.5.3 Slot 2



# A Summary

## A.1 Status

V&V Scientist	Jen Lauer
V&V Date (YYYY-MM-DD)	2012.11.01
V&V Edition	1
V&V Disposition and Status	OK
V&V Charge Time	39.964

## A.2 Comments