

V&V Reference Report

L2 ASCDS Version : 8.4.5

Observation 2756 - L2 Version 4
Chandra X-Ray Center

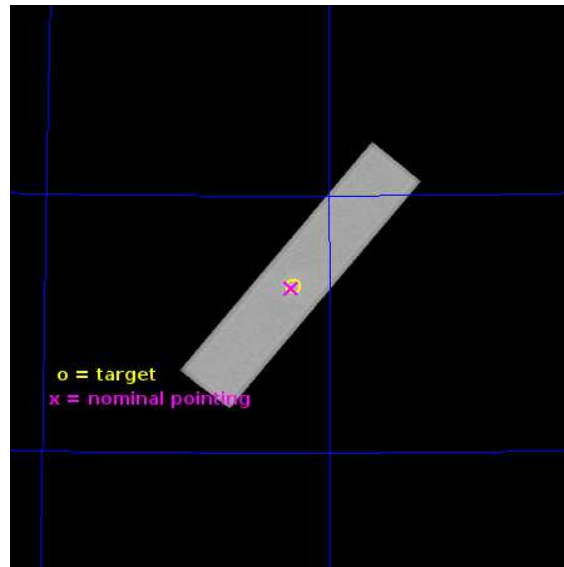
L2 Processing Date : Jun 28 2013

Contents

1	Front	2
2	OBI	3
2.1	OBI	3
2.1.1	Images	3
2.1.2	Parameters	4
2.1.3	Events	4
2.2	Compared Parameters	5
2.3	Aspect	6
2.4	Star Slots	9
2.4.1	Slot 3	9
2.4.2	Slot 4	10
2.4.3	Slot 5	11
2.4.4	Slot 6	12
2.4.5	Slot 7	13
2.5	FID Slots	14
2.5.1	Slot 0	14
2.5.2	Slot 1	15
2.5.3	Slot 2	16
A	Summary	17
A.1	Status	17
A.2	Comments	17

1 Front

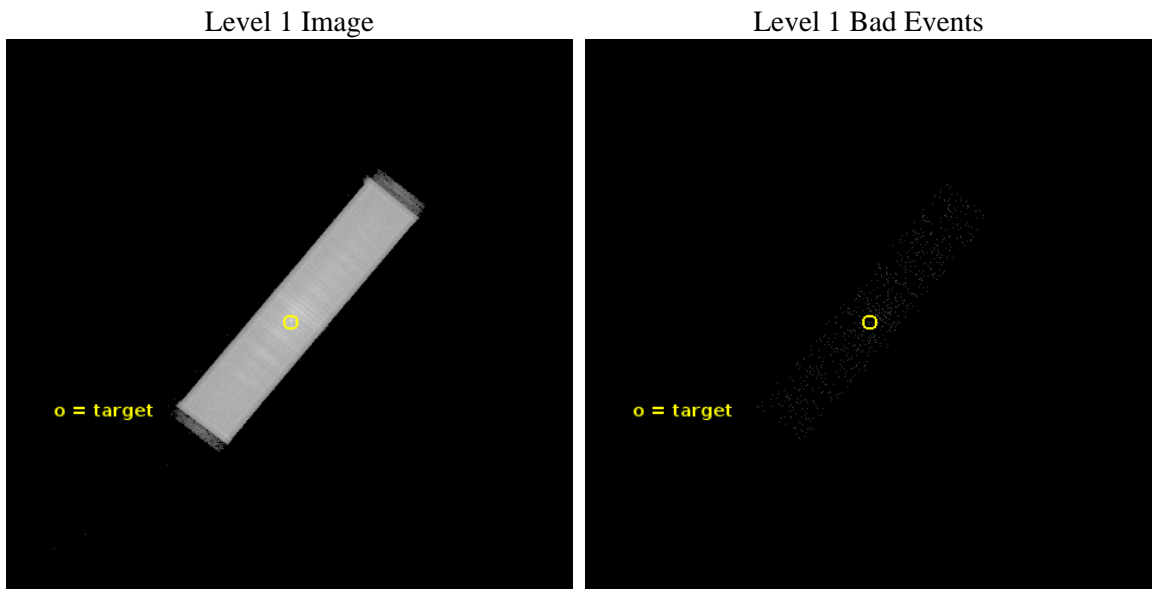
seq_num	500206	Sequence number
obs_id	2756	Observation id
title	MEASUREMENT OF P-DOT IN 3C58	Proposal title
observer	Dr. Stephen Murray	Principal investigator
object	3C58	Source name
ra_targ	31.408333	Observer's specified target RA [deg]
dec_targ	64.823333	Observer's specified target Dec [deg]
ra_nom	31.414982079703	Nominal RA [deg]
dec_nom	64.819636879744	Nominal Dec [deg]
roll_nom	308.95333574627	Nominal Roll [deg]
revision	4	Processing version of data
ontime	24322.48223348	[s]
livetime	24245.272255874	Ontime multiplied by DTCOR
l2events	739330	Number of level 2 events



2 OBI

2.1 OBI

2.1.1 Images



2.1.2 Parameters

obi_num	0	Obi number	sched_exp_time	24500.000000	[s] Scheduled observation exposure time
ascdsver	10	Processing system revision	ontime	24322.48223348	[s]
caldsver	4.5.7	 	l1events	1131486	Number of level 1 events
date	2013-06-29T00:28:01	Date and time of file creation			
revision	4	Processing version of data			

2.1.3 Events

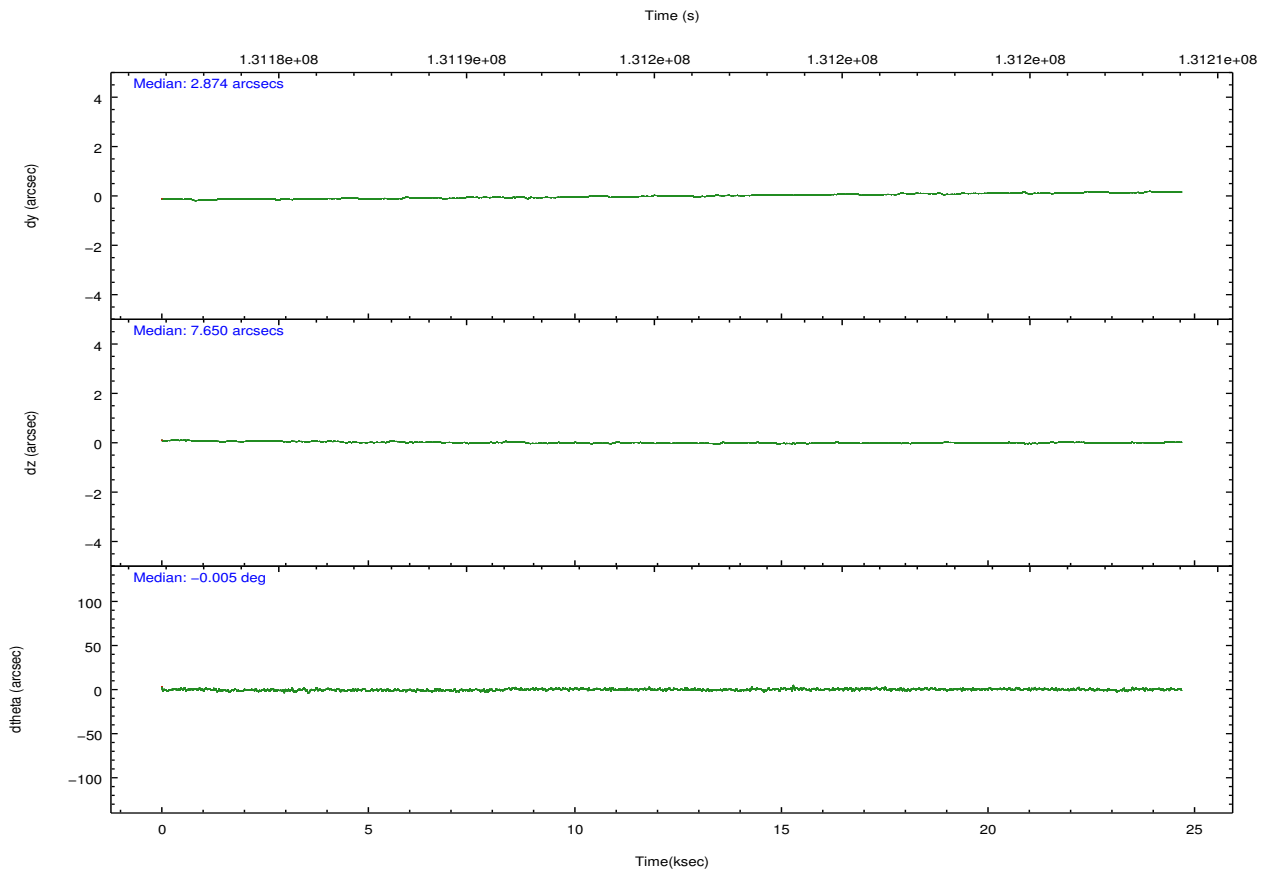
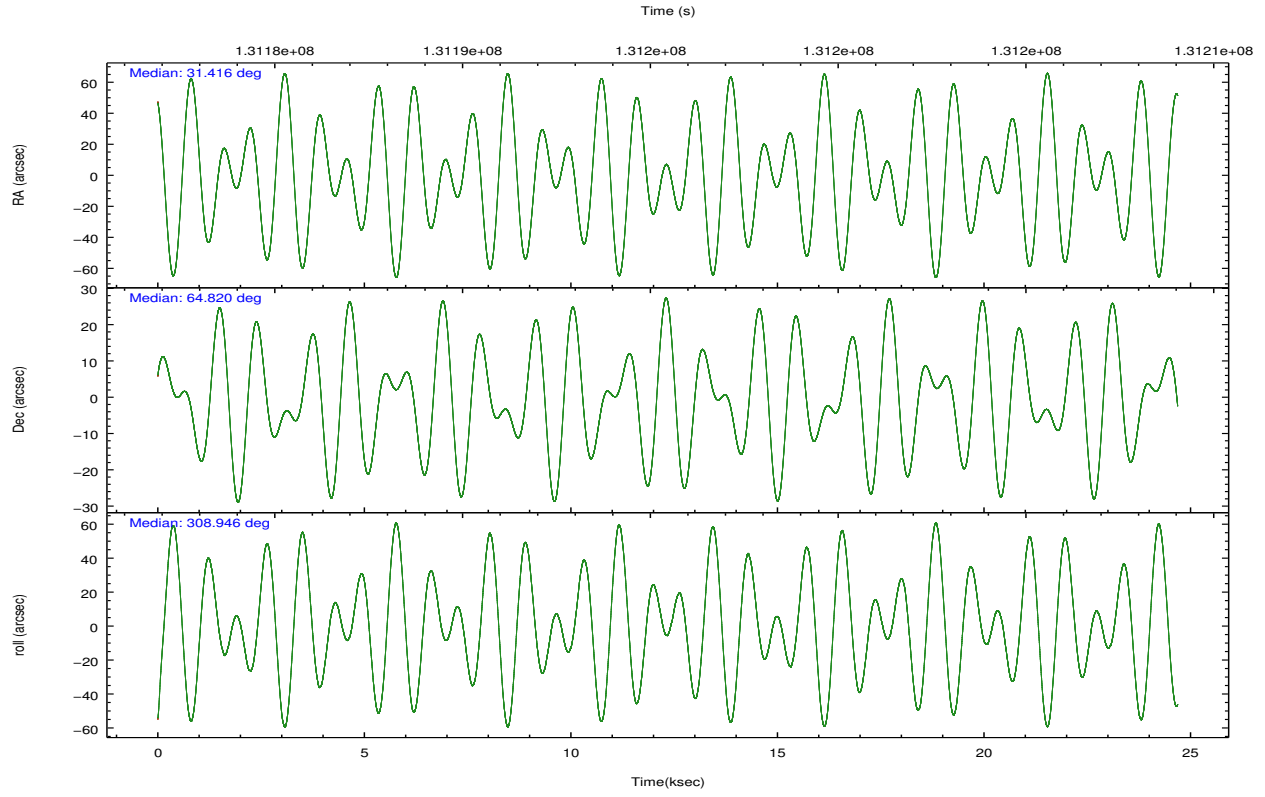
Level 1 Events

	segment 1	segment 2	segment 3
level 1 events	1559	1129921	6
rejected events	4	4593	3
rejected %	0%	0%	50%

2.2 Compared Parameters

Parameter	Planned	Actual	Parameter	Planned	Actual
Instrument	HRC	HRC	Obspar format version number	7	7
Detector	HRC-S	HRC-S	Obspar file type	PREDICTED	ACTUAL
Grating	NONE	NONE	Obspar update status	NONE	UPDATED
Data mode	OBSERVING	OBSERVING			
Observation mode	POINTING	POINTING			
[deg] Pointing RA	31.351128	31.41498207970307			
[deg] Pointing Dec	64.828545	64.81963687974428			
[deg] Pointing Roll	308.943802	308.953335746269			
[mm] SIM focus pos	-1.529586	-1.523540733526241			
[mm] SIM defocus	0.003750771043328743	0.009795905878055677			
[mm] SIM translation stage pos	250.455976	250.466033080201			
[mm] SIM translation stage offset	0	-0.01005468664627074			
[s] Observation start time (MET)	131183309.184000	131182861.07391			
Observation start date	2002-02-27T07:47:25	2002-02-27T07:41:01			
[s] Observation end time (MET)	131207809.184000	131208709.52496			
Observation end date	2002-02-27T14:35:45	2002-02-27T14:51:49			

2.3 Aspect

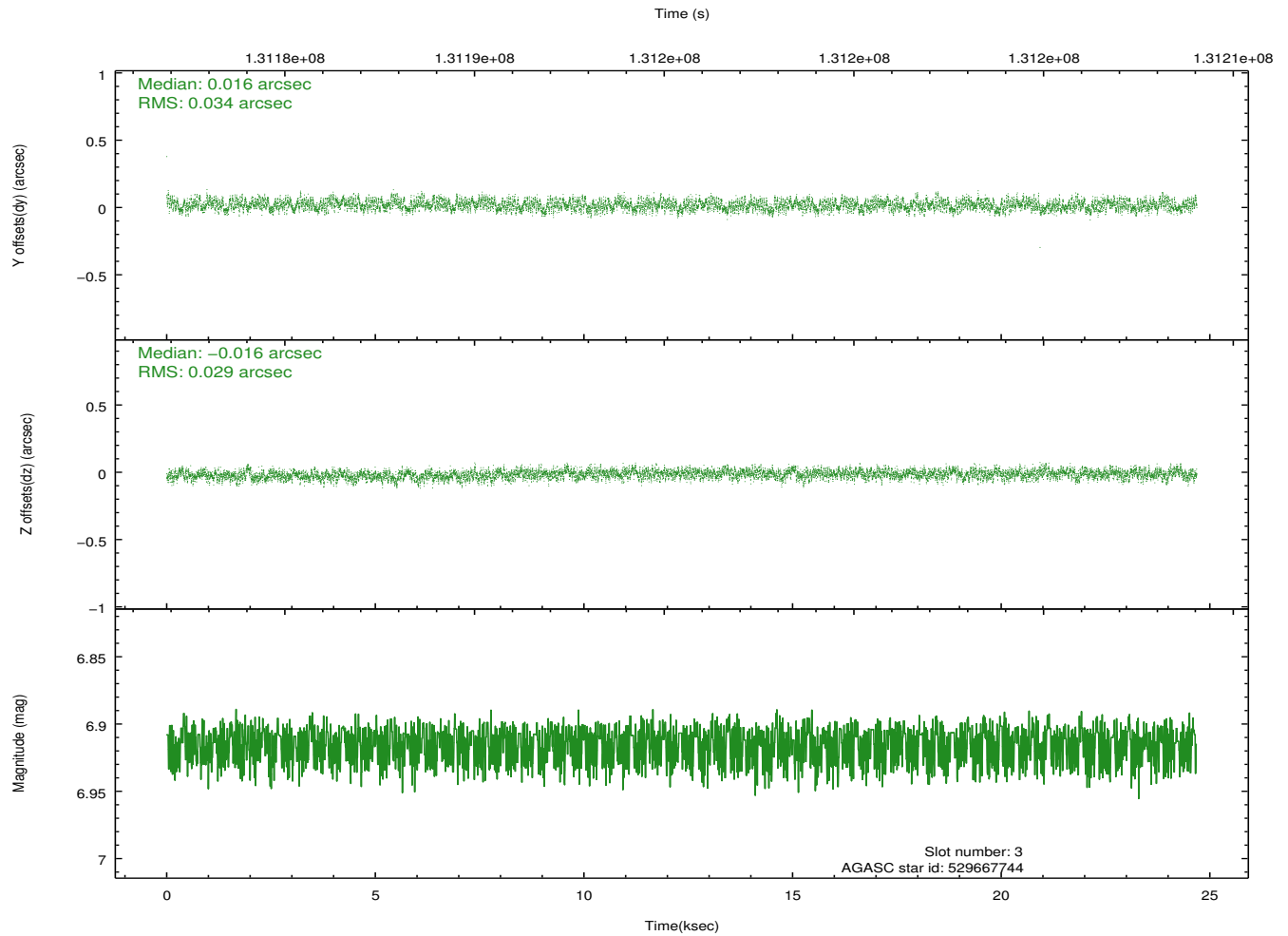
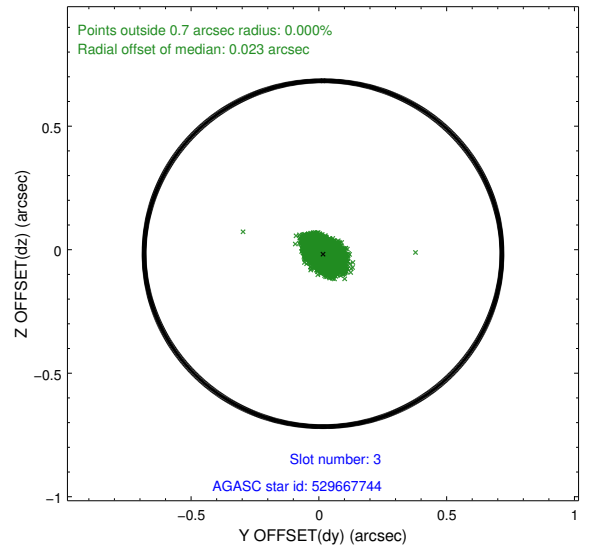
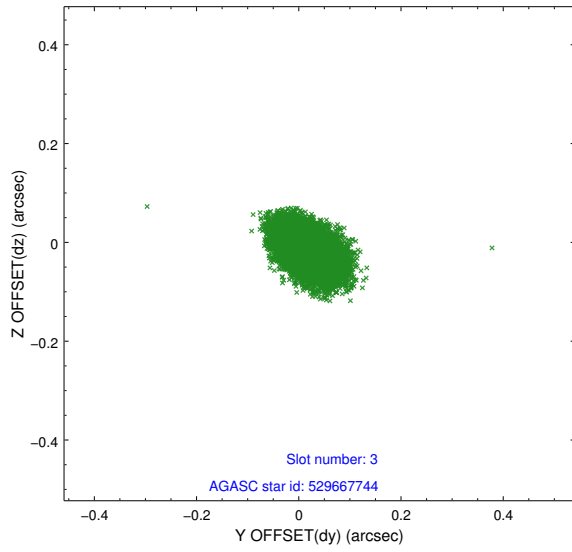


Slot Statistics

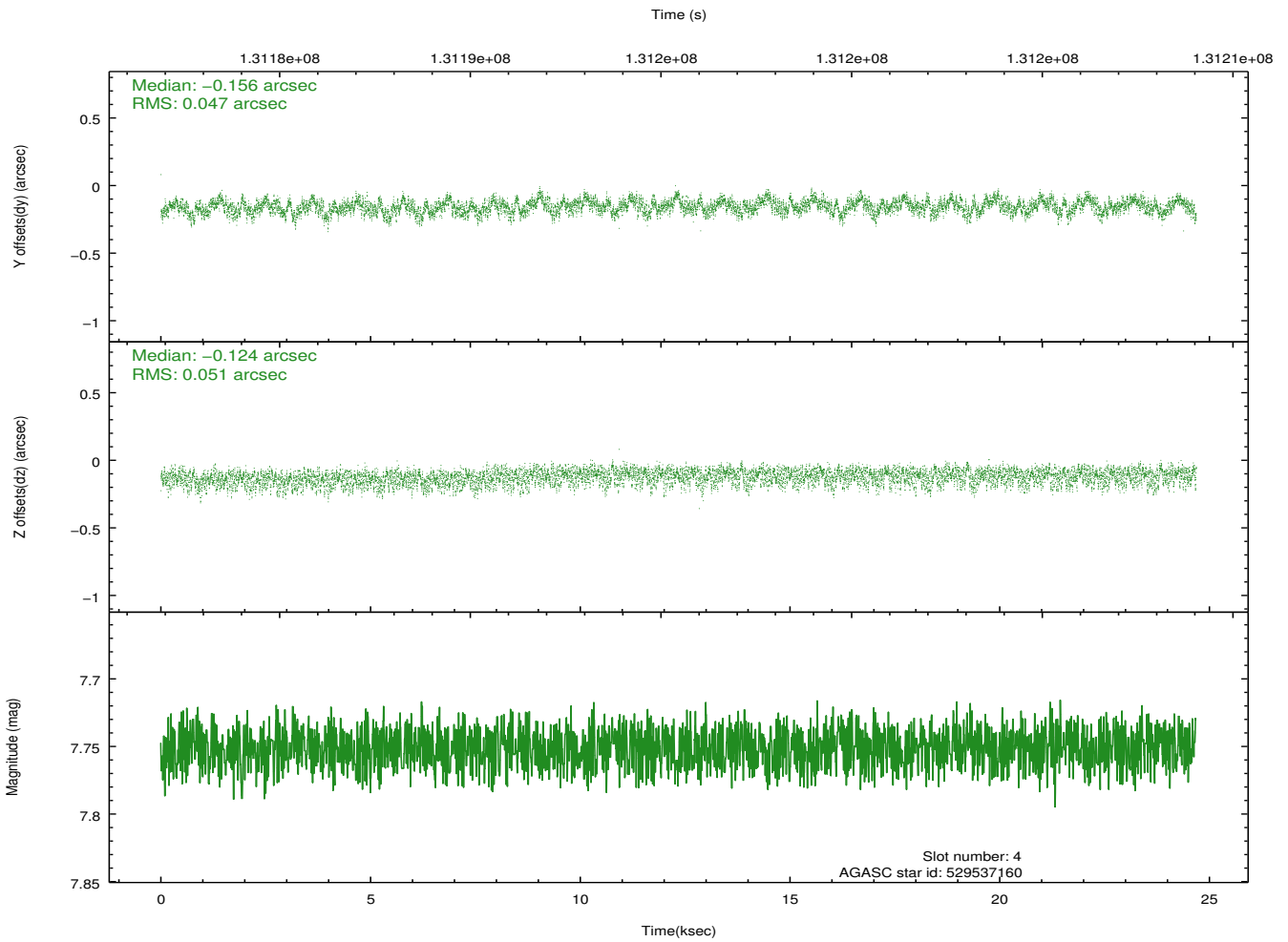
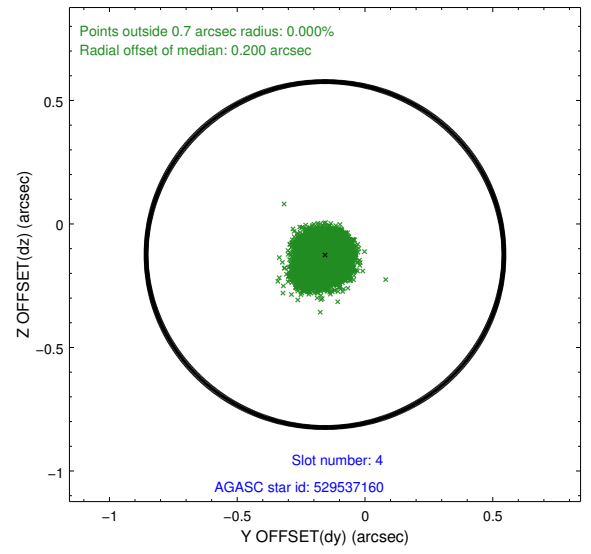
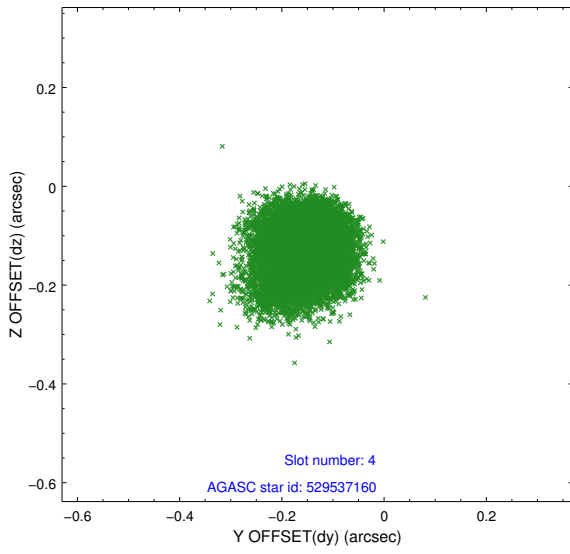
slot	status	id	mag	n_pts	med_dy	med_dz	dr1	dr2	ra	dec	mean_y	mean_z
0	FID	HRC-S-1	6.96	6022	0.106	-0.074	0.010	0.017	0.000000	0.000000	-1156.91	-456.20
1	FID	HRC-S-3	6.99	6022	0.136	-0.134	0.008	0.014	0.000000	0.000000	-1159.82	573.18
2	FID	HRC-S-4	6.92	6022	0.144	-0.090	0.011	0.022	0.000000	0.000000	1241.15	576.02
3	GUIDE	529667744	6.91	12042	0.016	-0.016	0.048	0.077	30.954689	64.237488	1262.76	-1818.96
4	GUIDE	529537160	7.75	12042	-0.156	-0.124	0.074	0.118	29.402071	64.782597	-1786.75	-2400.68
5	GUIDE	529665216	7.73	12042	0.027	0.026	0.059	0.094	32.189318	65.037431	207.70	1467.87
6	GUIDE	529667344	8.81	12038	0.012	-0.040	0.092	0.143	31.882421	65.482125	-1334.94	2097.94
7	GUIDE	529662328	9.21	12034	0.095	0.159	0.085	0.139	32.980339	64.683703	1955.55	1643.21

2.4 Star Slots

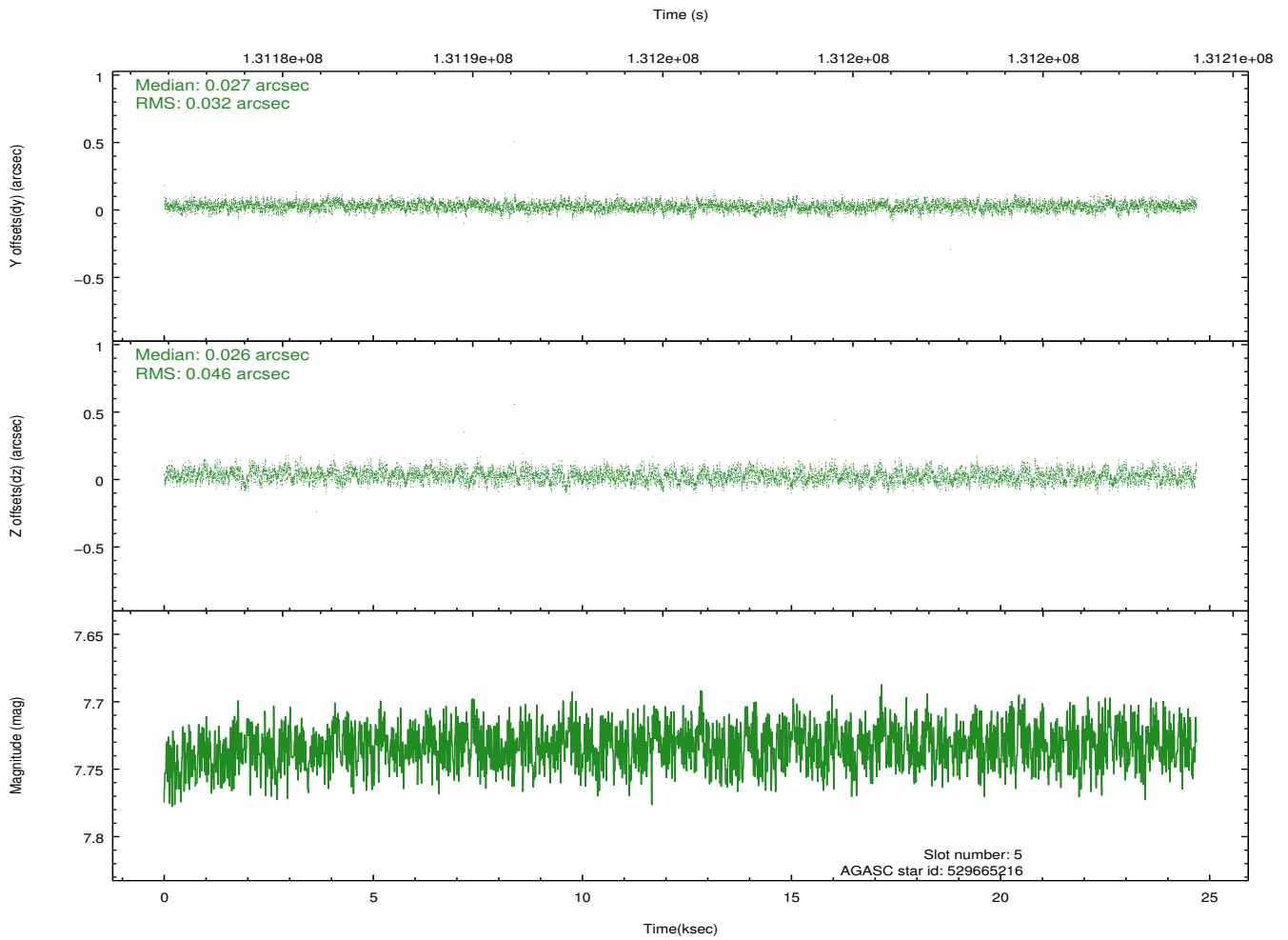
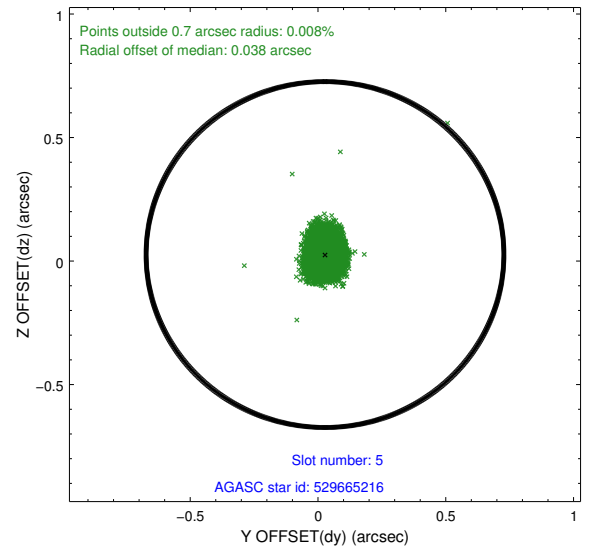
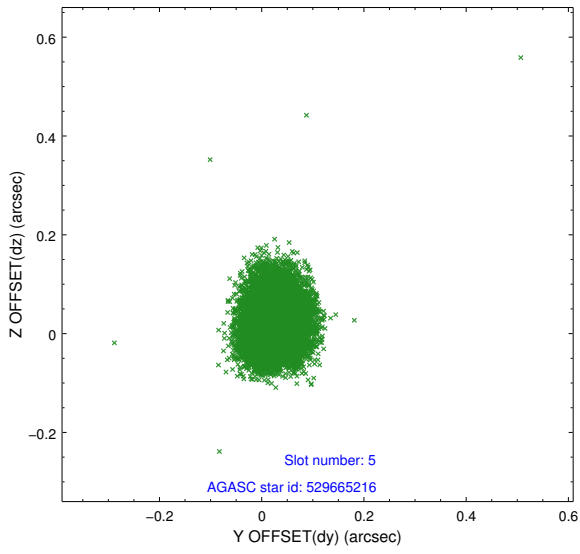
2.4.1 Slot 3



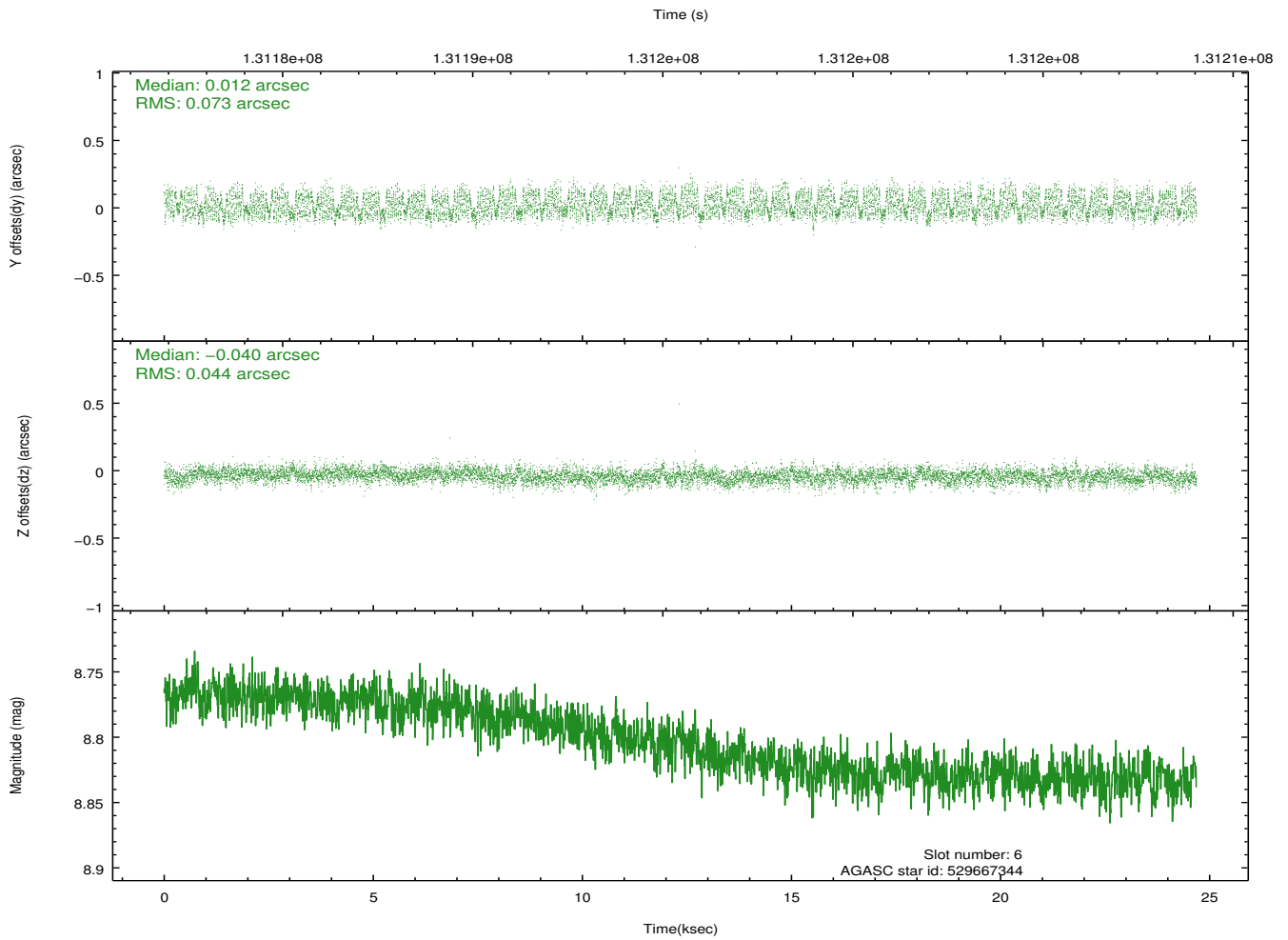
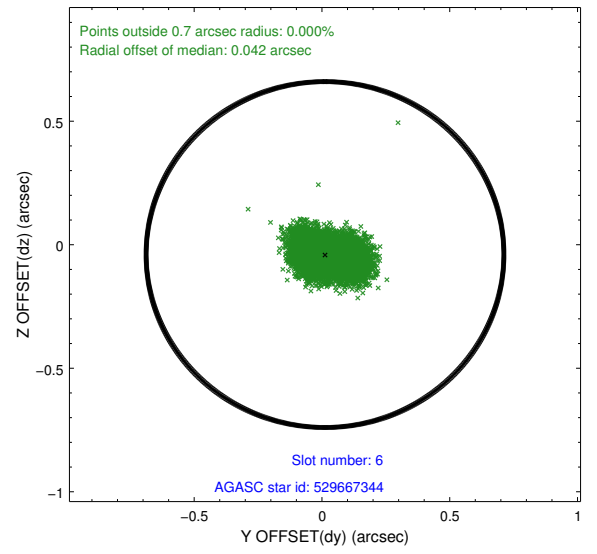
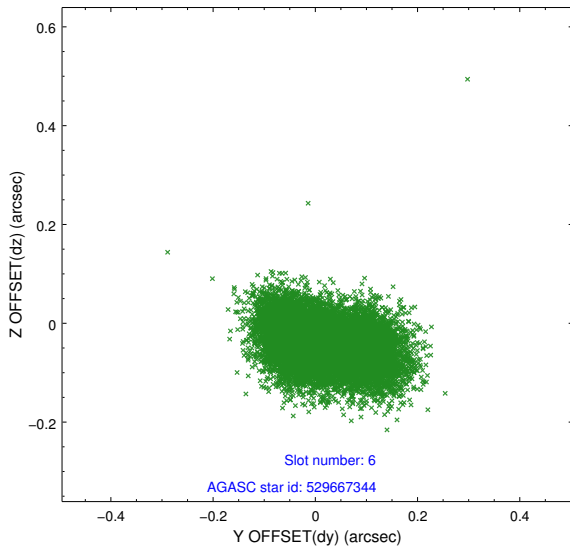
2.4.2 Slot 4



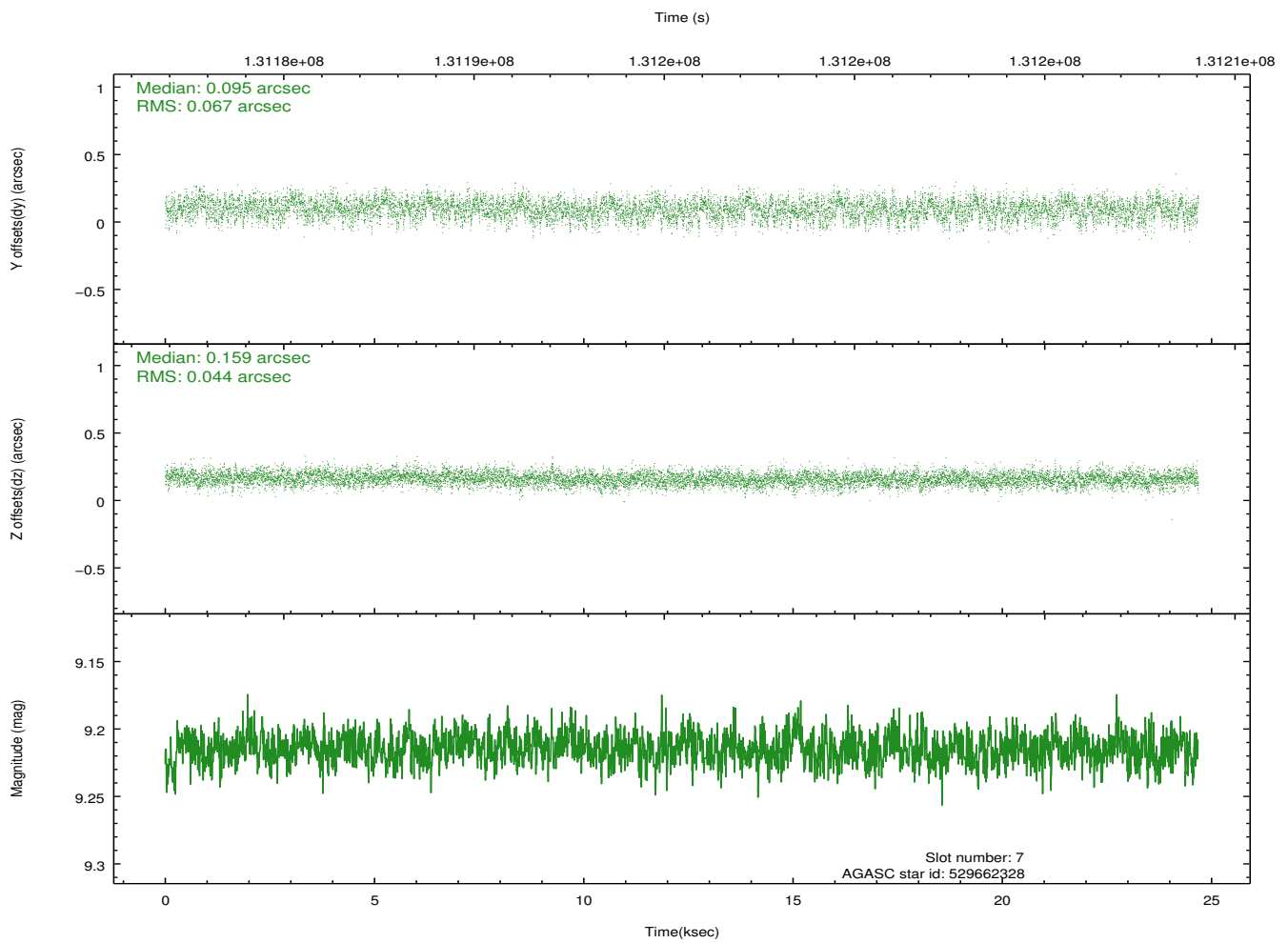
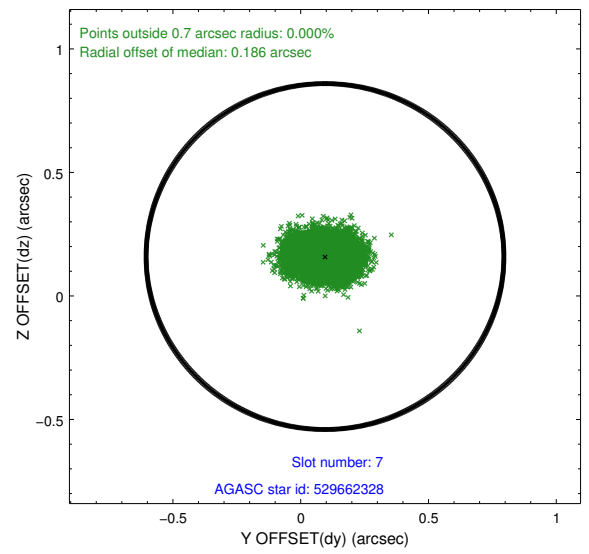
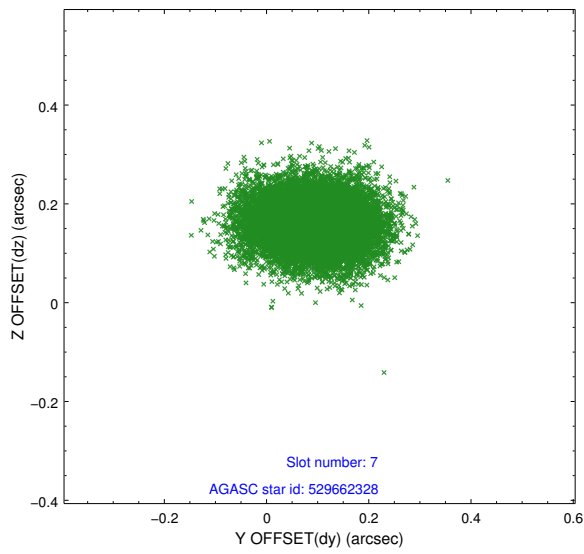
2.4.3 Slot 5



2.4.4 Slot 6

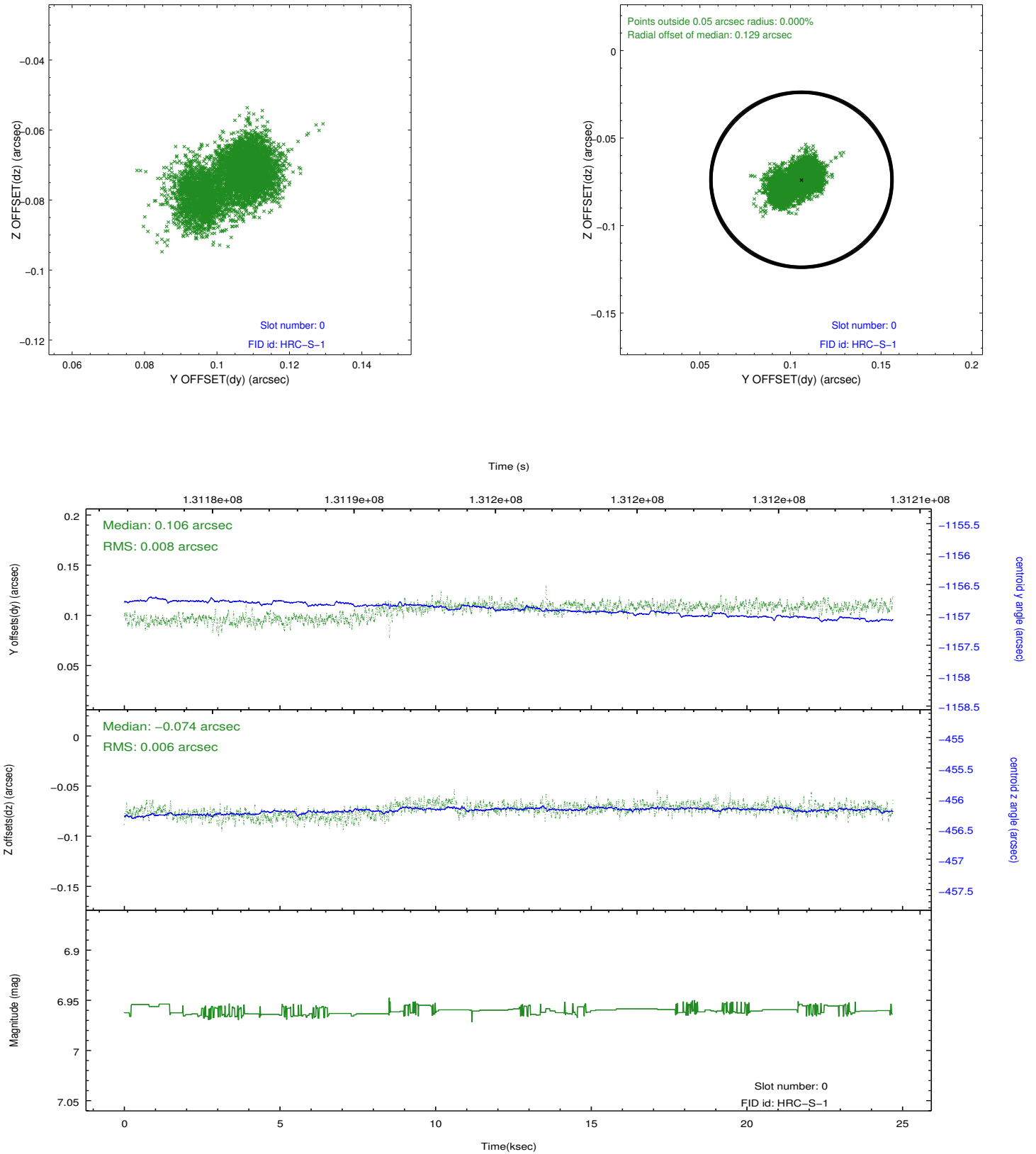


2.4.5 Slot 7

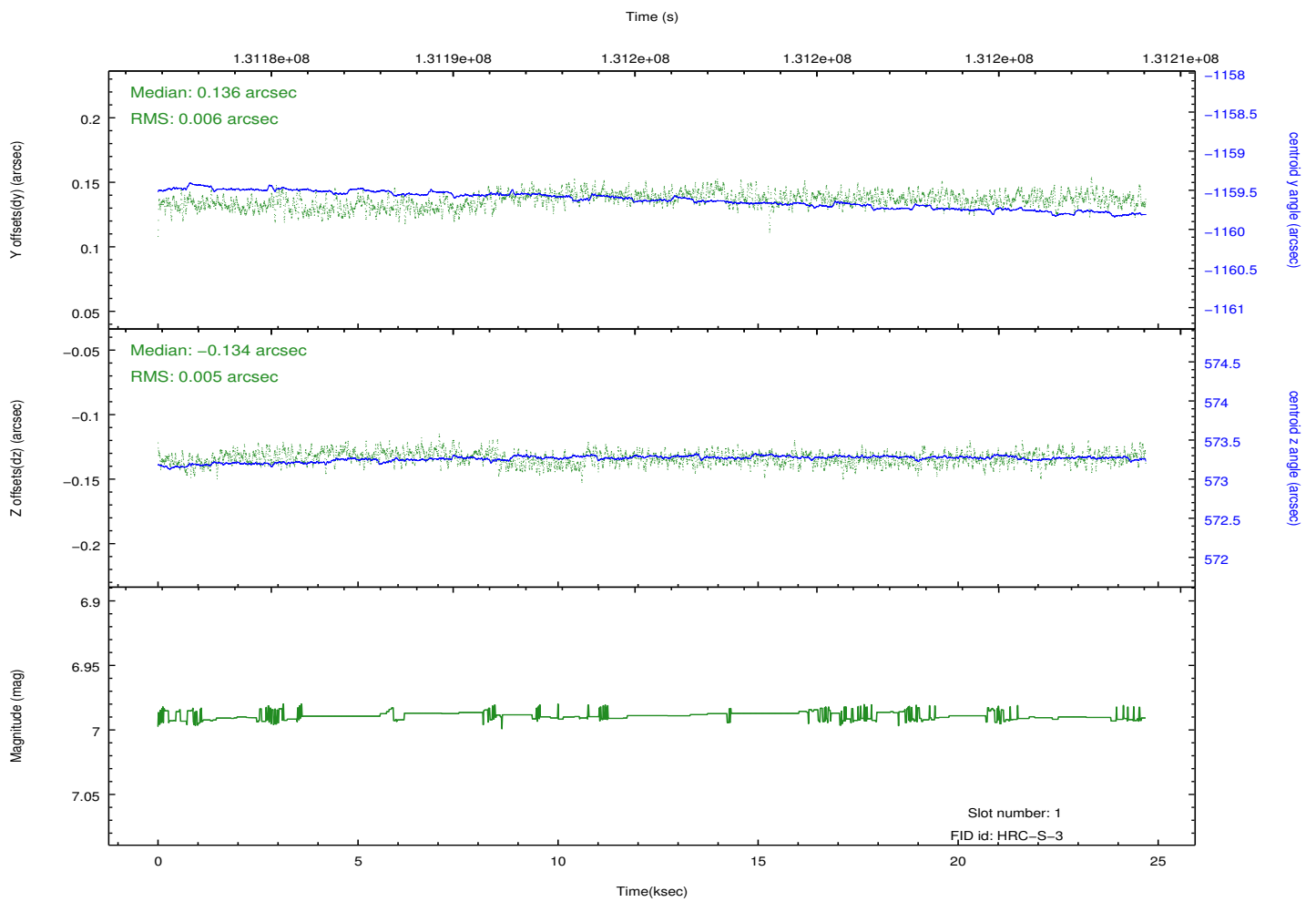
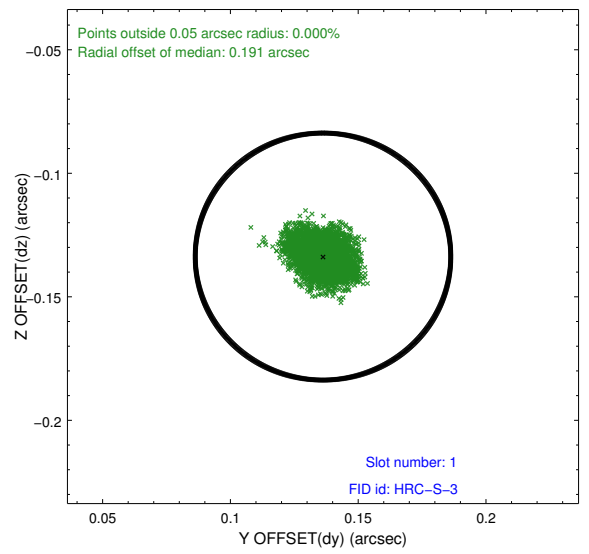
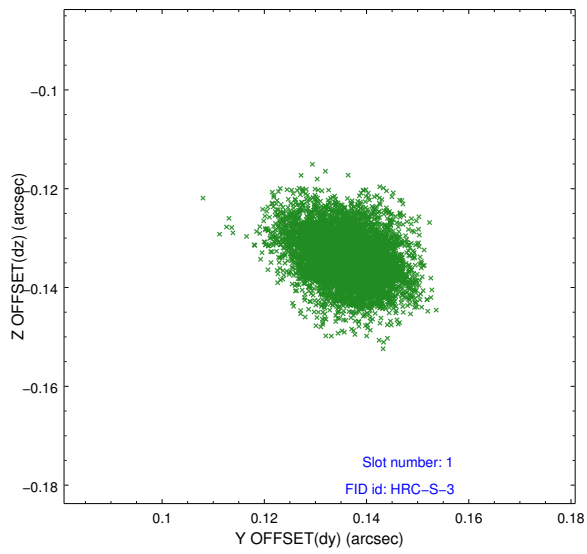


2.5 FID Slots

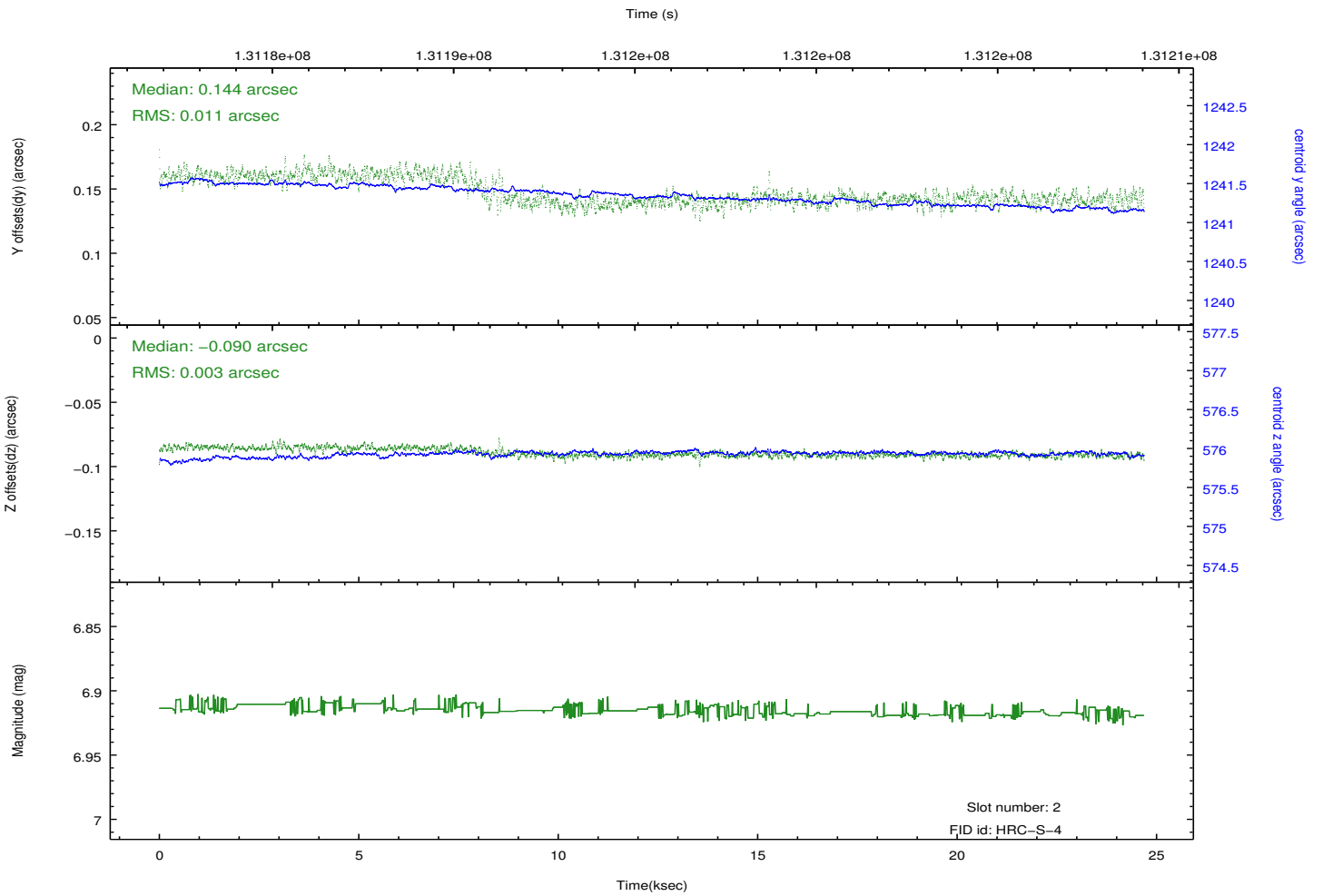
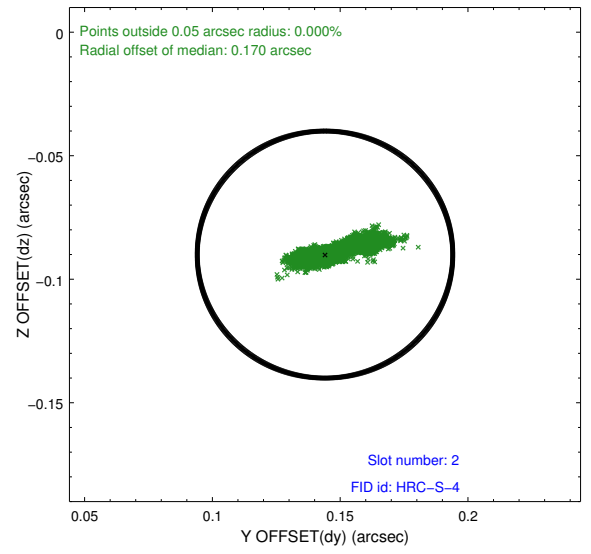
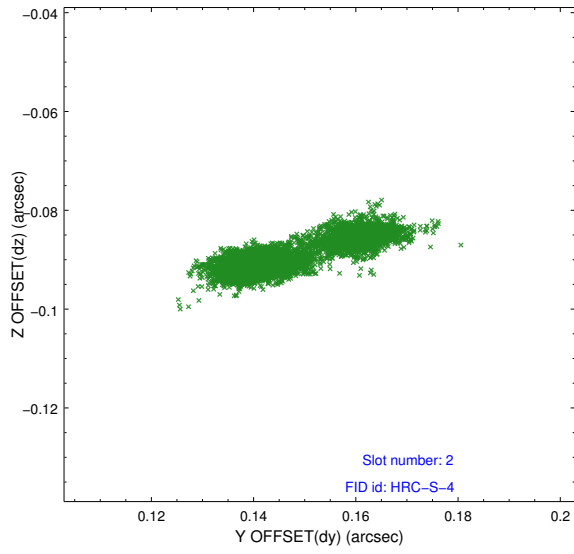
2.5.1 Slot 0



2.5.2 Slot 1



2.5.3 Slot 2



A Summary

A.1 Status

V&V Scientist	Beth Sundheim
V&V Date (YYYY-MM-DD)	2013.07.01
V&V Edition	1
V&V Disposition and Status	OK
V&V Charge Time	24.32

A.2 Comments