

V&V Reference Report

L2 ASCDS Version : 8.4.5

Observation 2916 - L2 Version 3
Chandra X-Ray Center

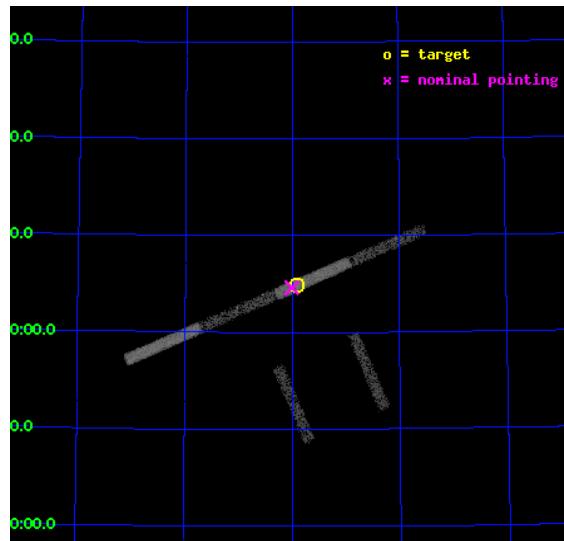
L2 Processing Date : Oct 7 2012

Contents

1	Front	2
2	OBI	3
2.1	OBI	3
2.1.1	Images	3
2.1.2	Bias	3
2.1.3	Parameters	4
2.1.4	Events	4
2.2	Compared Parameters	5
2.3	Aspect	6
2.4	Star Slots	9
2.4.1	Slot 3	9
2.4.2	Slot 4	10
2.4.3	Slot 5	11
2.4.4	Slot 6	12
2.4.5	Slot 7	13
2.5	FID Slots	14
2.5.1	Slot 0	14
2.5.2	Slot 1	15
2.5.3	Slot 2	16
A	Summary	17
A.1	Status	17
A.2	Comments	17

1 Front

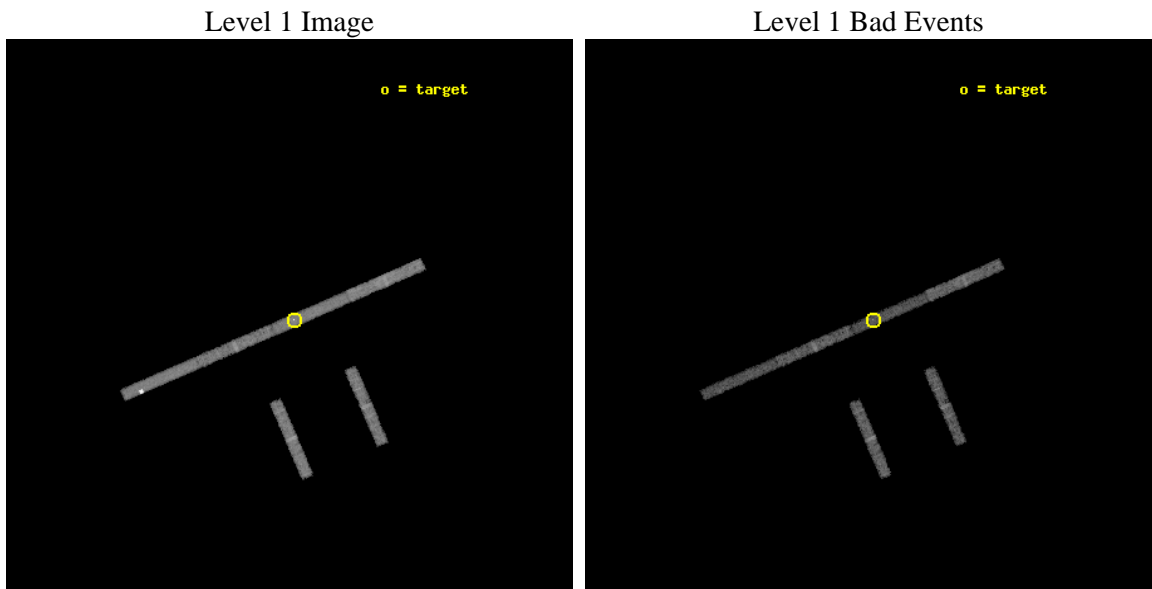
seq_num	600253	Sequence number
obs_id	2916	Observation id
title	FURTHER PROBING THE NATURE OF SUPER-LUMINOUS X-RAY SOURCES IN NEARBY GALAXIES	Proposal title
observer	Dr Timothy Roberts	Principal investigator
object	IC 342 X-1	Source name
dtcycle	0	
cycle	P	events from which exps? Prim/Second/Both
ra_targ	56.48	Observer's specified target RA [deg]
dec_targ	68.082222	Observer's specified target Dec [deg]
ra_nom	56.501620525611	Nominal RA [deg]
dec_nom	68.076869171028	Nominal Dec [deg]
roll_nom	336.59830796827	Nominal Roll [deg]
revision	3	Processing version of data
ontime	9883.9998316765	Sum of GTIs [s]
livetime	9336.6078513623	Livetime [s]
ontime2	9883.9998316765	Sum of GTIs [s]
ontime3	9883.9998316765	Sum of GTIs [s]
ontime5	9883.9998316765	Sum of GTIs [s]
ontime6	9883.9998316765	Sum of GTIs [s]
ontime7	9883.9998316765	Sum of GTIs [s]
ontime8	9883.9998316765	Sum of GTIs [s]
l2events	16455	Number of level 2 events



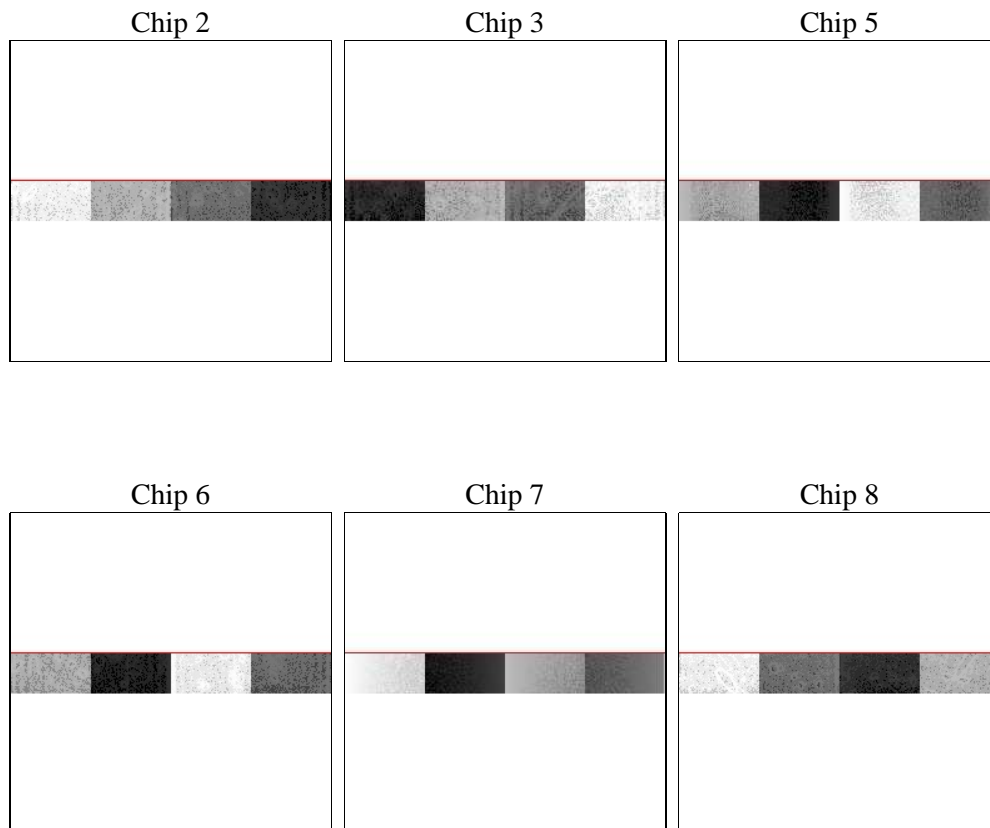
2 OBI

2.1 OBI

2.1.1 Images



2.1.2 Bias



2.1.3 Parameters

obi_num	1	Obi number	sched_exp_time	9500.000000	[s] Scheduled observation exposure time
ascdsver	8.4.5	Processing system revision	ontime	9883.9998316765	Sum of GTIs [s]
caldbver	4.5.2	 	ontime2	9883.9998316765	Sum of GTIs [s]
date	2012-10-07T08:08:39	Date and time of file creation	ontime3	9883.9998316765	Sum of GTIs [s]
revision	3	Processing version of data	ontime5	9883.9998316765	Sum of GTIs [s]
			ontime6	9883.9998316765	Sum of GTIs [s]
			ontime7	9883.9998316765	Sum of GTIs [s]
			ontime8	9883.9998316765	Sum of GTIs [s]
			l1events	91264	Number of level 1 events

2.1.4 Events

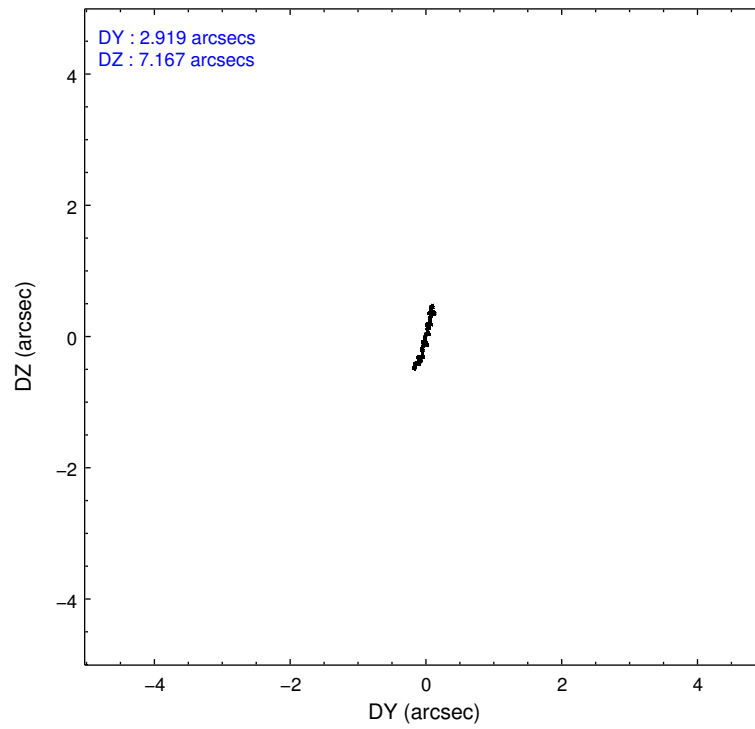
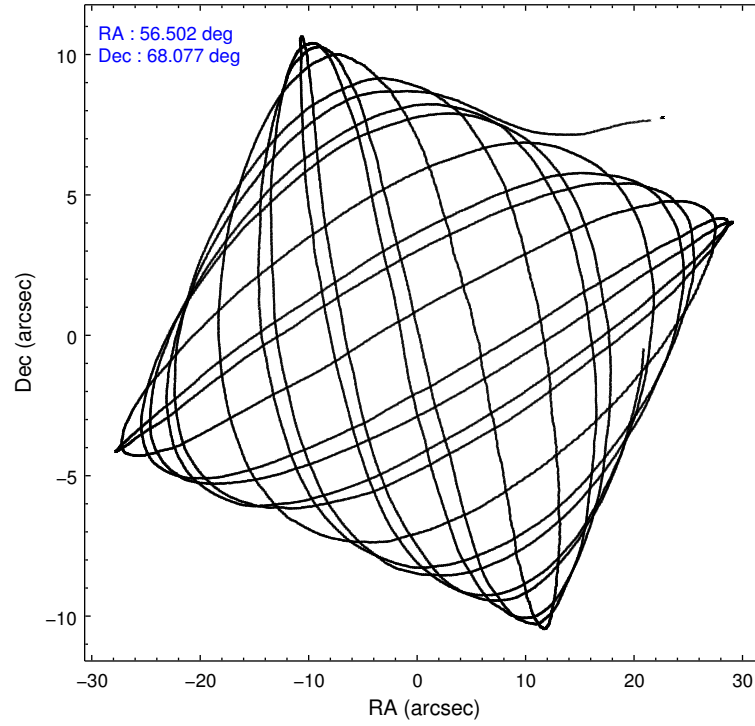
	ccd 2	ccd 3	ccd 5	ccd 6	ccd 7	ccd 8
level 1 events	12815	10952	25524	11338	14275	16360
rejected events	11558	9750	6938	10079	7068	13531
rejected %	90%	89%	27%	88%	49%	82%

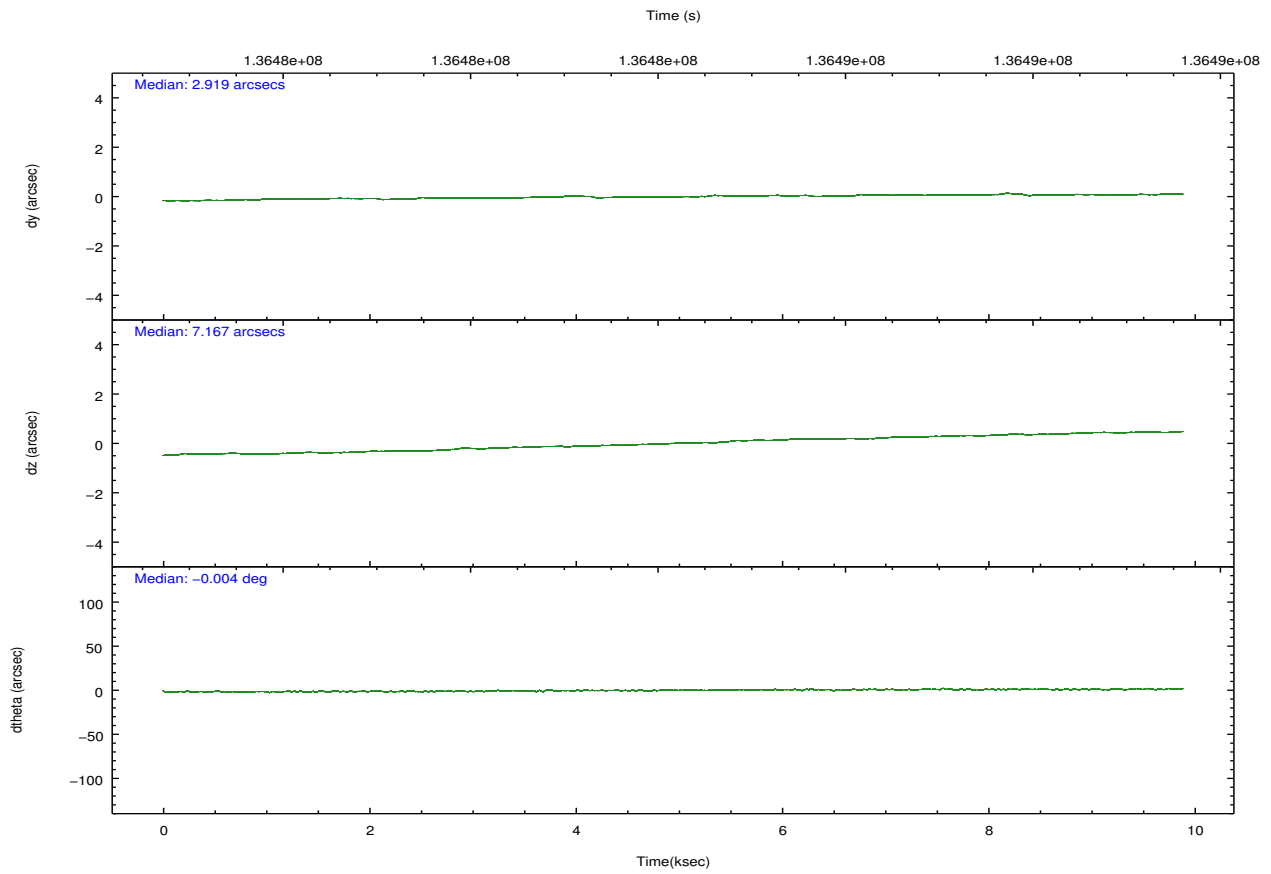
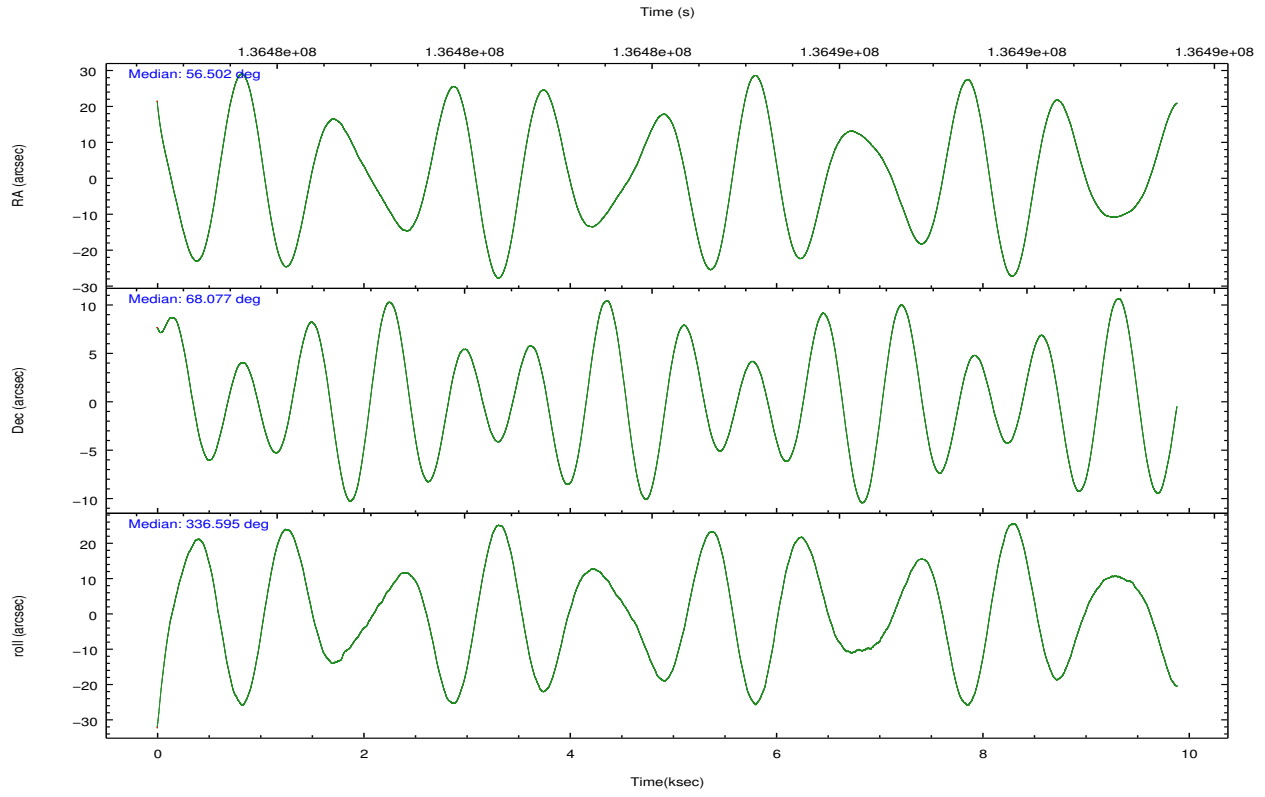
	ccd 2	ccd 3	ccd 5	ccd 6	ccd 7	ccd 8
grade 0 events	431	460	11899	473	1037	709
	3%	4%	46%	4%	7%	4%
grade 1 events	3	3	72	7	17	6
	0%	0%	0%	0%	0%	0%
grade 2 events	236	198	3222	210	1591	564
	1%	1%	12%	1%	11%	3%
grade 3 events	203	188	395	197	817	372
	1%	1%	1%	1%	5%	2%
grade 4 events	201	179	423	181	831	330
	1%	1%	1%	1%	5%	2%
grade 5 events	368	328	1039	338	1172	491
	2%	2%	4%	2%	8%	3%
grade 6 events	192	194	2890	212	3018	933
	1%	1%	11%	1%	21%	5%
grade 7 events	11181	9402	5584	9720	5792	12955
	87%	85%	21%	85%	40%	79%

2.2 Compared Parameters

Parameter	Planned	Actual	Parameter	Planned	Actual
Instrument	ACIS	ACIS	Obspar format version number	7	7
Detector	ACIS-235678	ACIS-235678	Obspar file type	PREDICTED	ACTUAL
Grating	NONE	NONE	Obspar update status	NONE	UPDATED
Data mode	FAINT	FAINT	Number of optional ACIS chips dropped	0	0
Observation mode	POINTING	POINTING	On-chip summing requested	N	N
[deg] Pointing RA	56.429291	56.50162052561117	Subarray requested	CUSTOM	1/8
[deg] Pointing Dec	68.073387	68.07686917102789	Subarray start row	449	449
[deg] Pointing Roll	336.508792	336.5983079682661	Subarray row count	128	128
[mm] SIM focus pos	-0.684267	-0.6828225247311905	Alternating exposures requested	N	N
[mm] SIM defocus	0	0.001444936568705701	[s] Primary exposure time	0.000000	0.7
[mm] SIM translation stage pos	-190.132523	-190.1425803651734			
[mm] SIM translation stage offset	0	0.01005778216563158			
[s] Observation start time (MET)	136479597.184000	136478543.77627			
Observation start date	2002-04-29T14:58:53	2002-04-29T14:42:23			
[s] Observation end time (MET)	136489097.184000	136489644.52672			
Observation end date	2002-04-29T17:37:13	2002-04-29T17:47:24			
Read mode	TIMED	TIMED			

2.3 Aspect



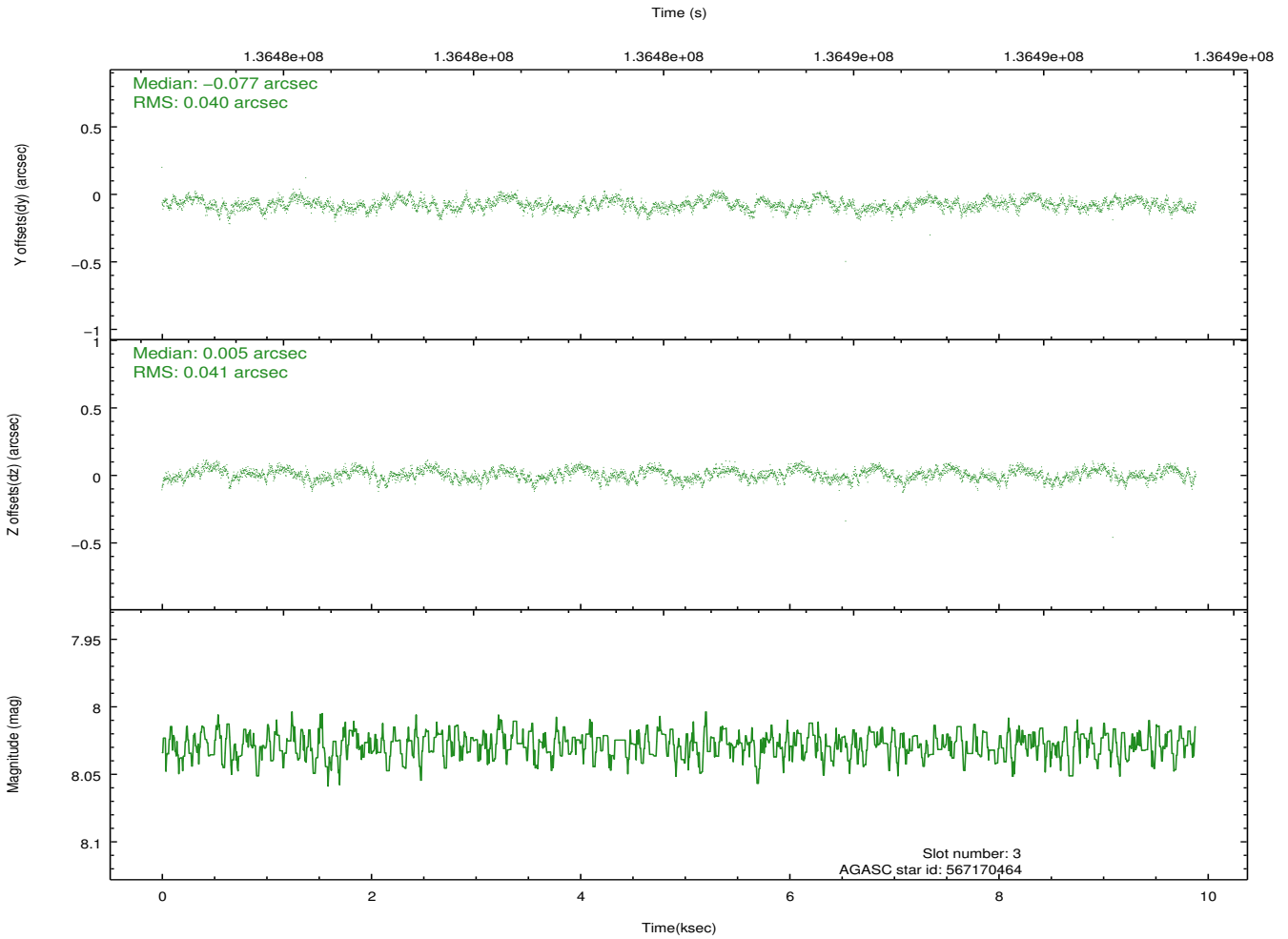
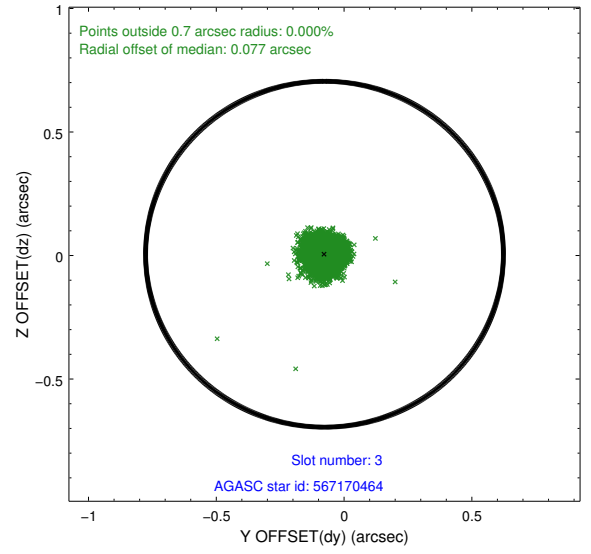
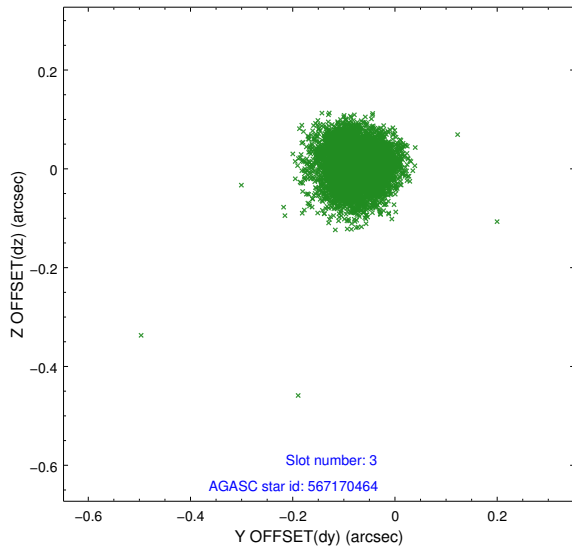


Slot Statistics

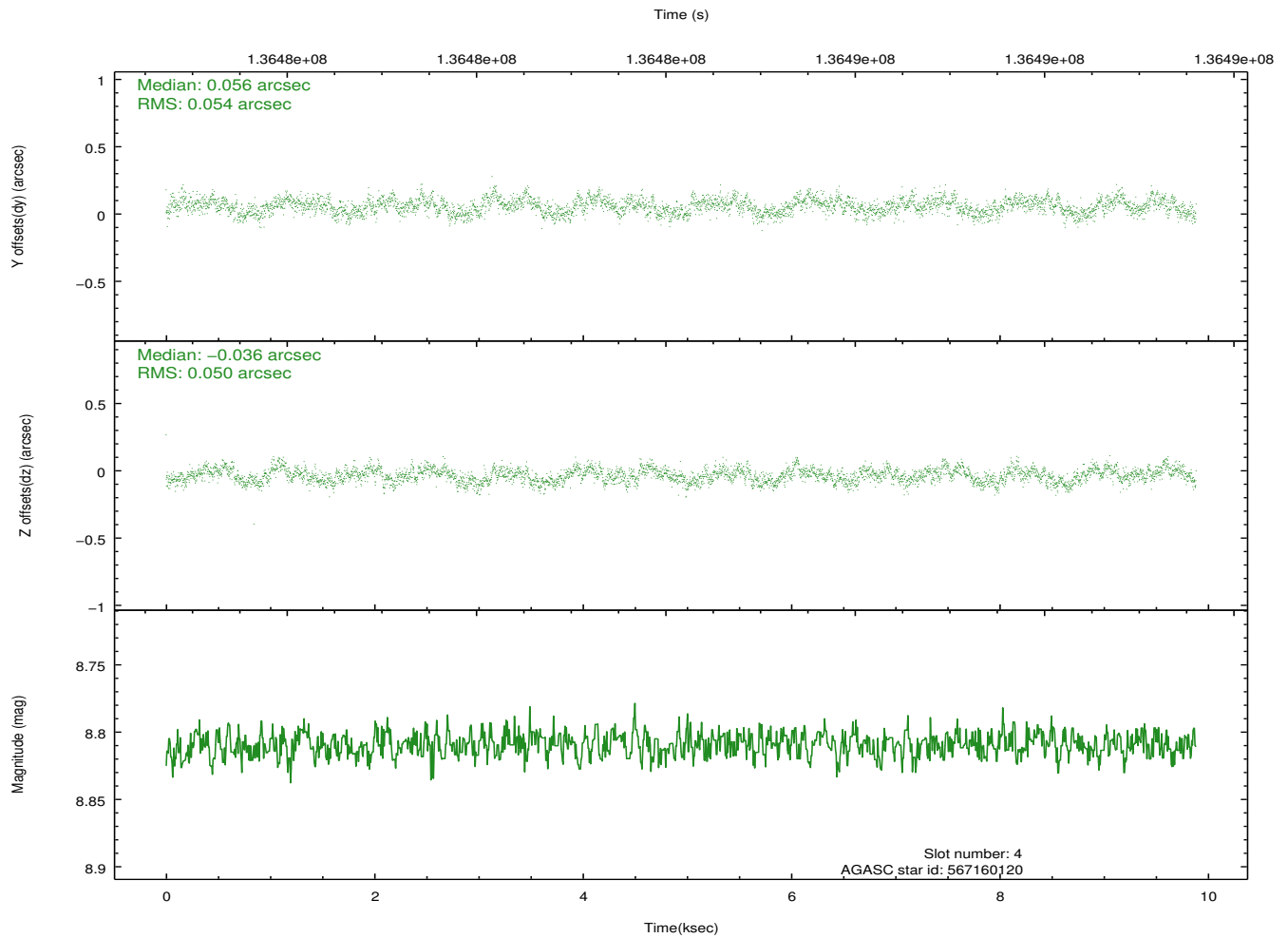
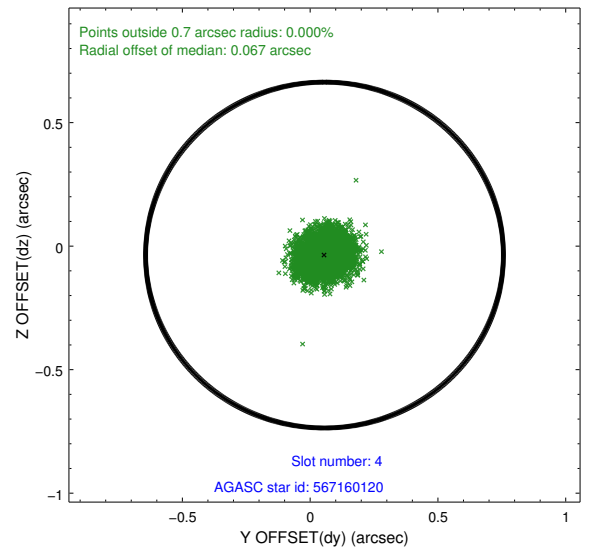
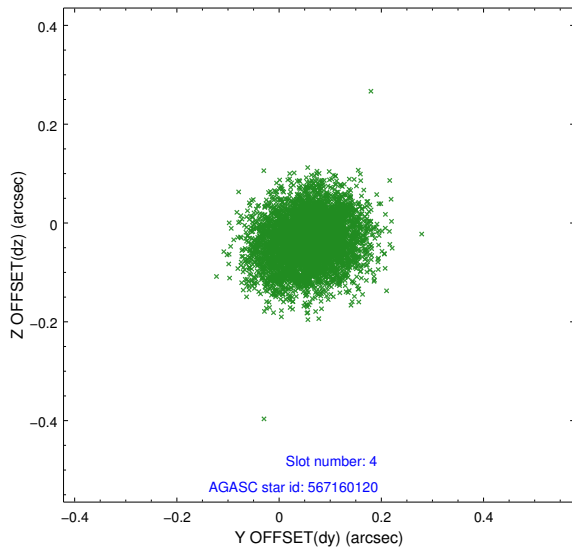
slot	status	id	mag	n_pts	med_dy	med_dz	dr1	dr2	ra	dec	mean_y	mean_z
0	FID	ACIS-S-2	7.11	2410	-0.009	0.006	0.009	0.014	0.000000	0.000000	-755.55	-1728.28
1	FID	ACIS-S-4	7.20	2412	-0.039	0.003	0.006	0.011	0.000000	0.000000	2157.44	179.65
2	FID	ACIS-S-5	7.24	2412	0.017	0.000	0.010	0.016	0.000000	0.000000	-1807.68	173.92
3	GUIDE	567170464	8.03	4823	-0.077	0.005	0.061	0.093	54.496546	67.994557	-2294.68	-1261.88
4	GUIDE	567160120	8.81	4822	0.056	-0.036	0.079	0.124	58.169025	67.893534	2404.99	375.99
5	GUIDE	567164688	9.00	4820	0.018	-0.003	0.074	0.120	55.209386	68.614739	-2252.16	1163.78
6	GUIDE	567158464	9.58	4821	-0.046	-0.071	0.100	0.158	56.829076	68.700482	-422.61	2280.72
7	GUIDE	567159240	9.53	4819	0.056	0.114	0.143	0.216	58.435274	68.440968	1887.67	2311.67

2.4 Star Slots

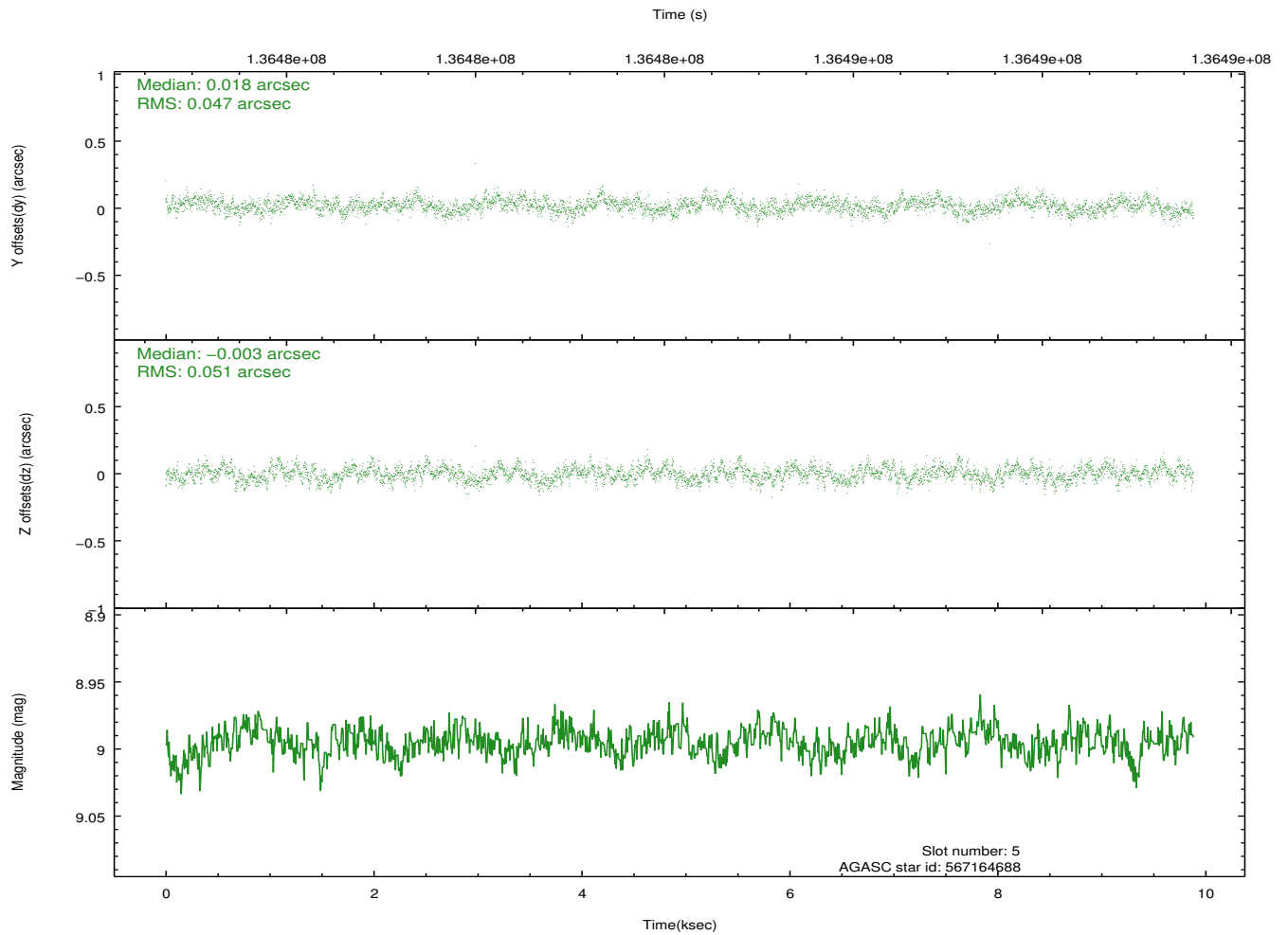
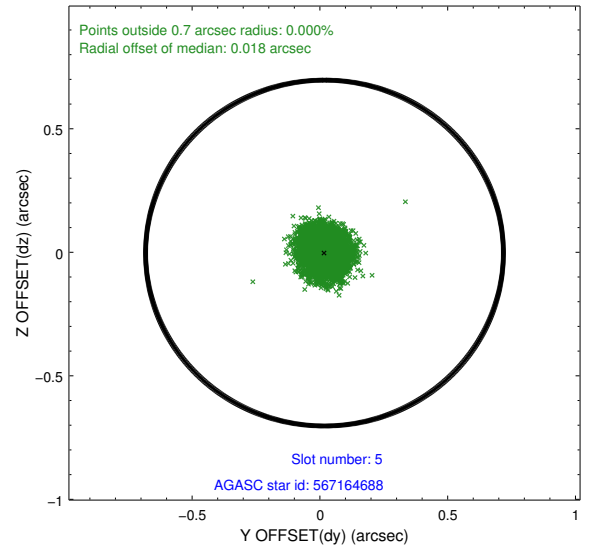
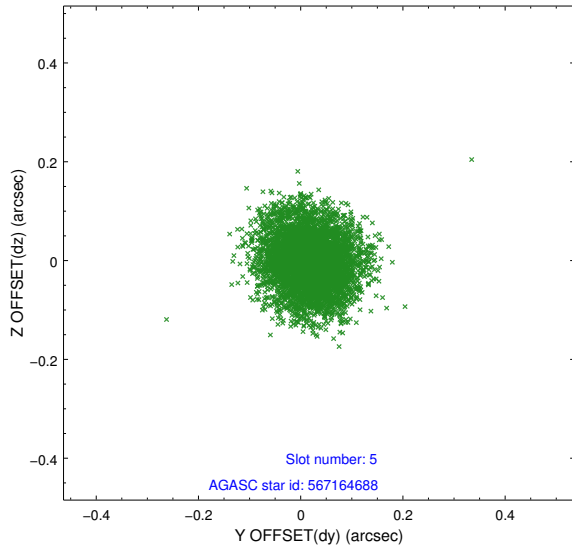
2.4.1 Slot 3



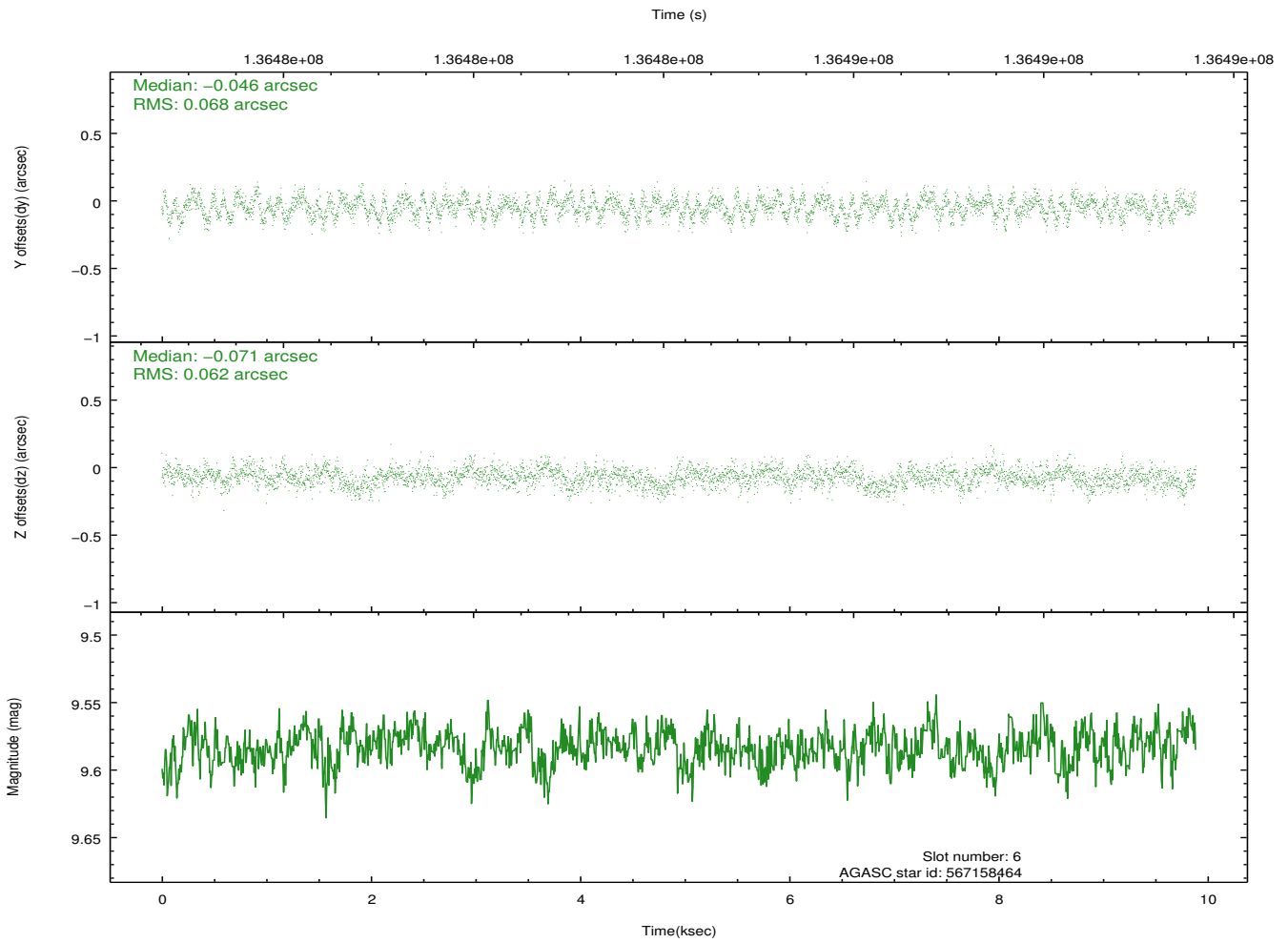
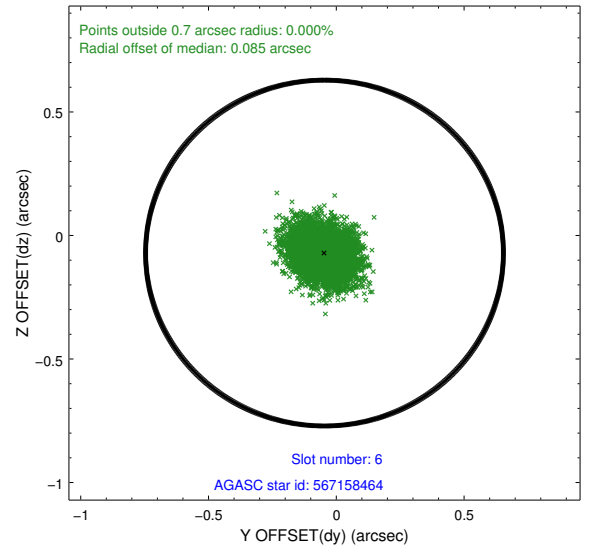
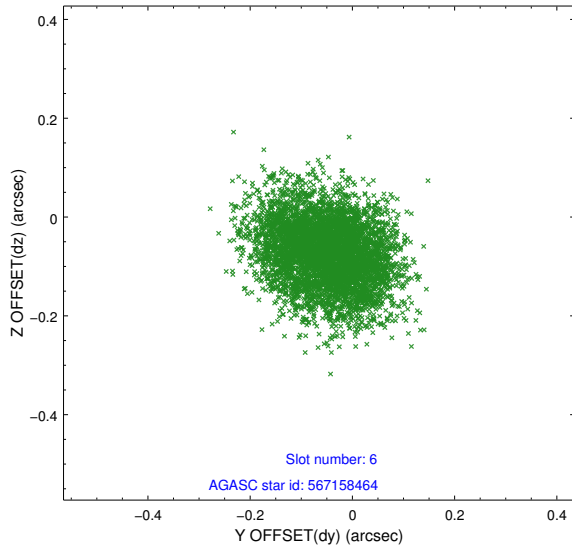
2.4.2 Slot 4



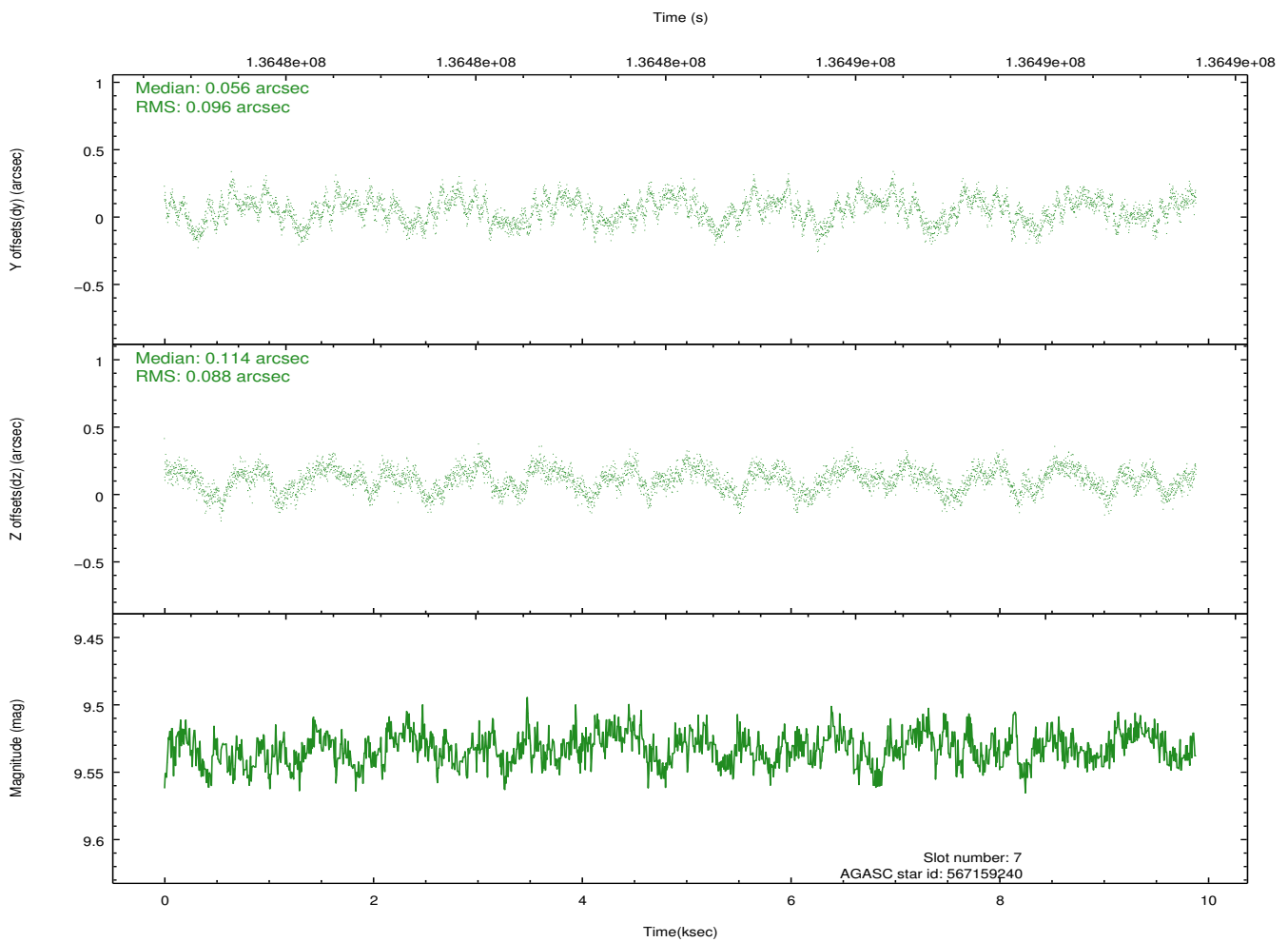
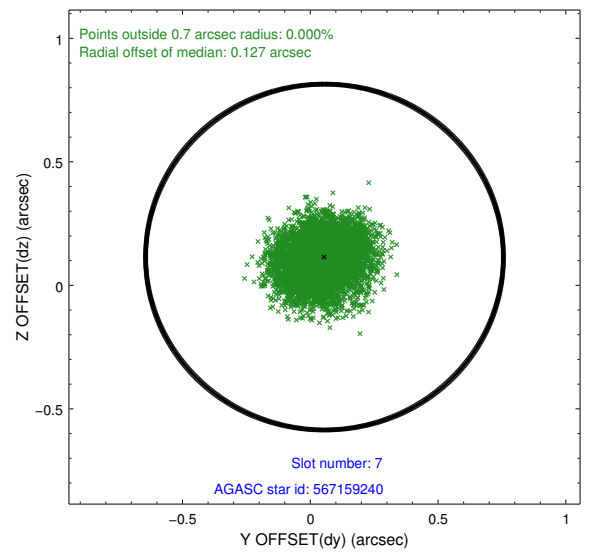
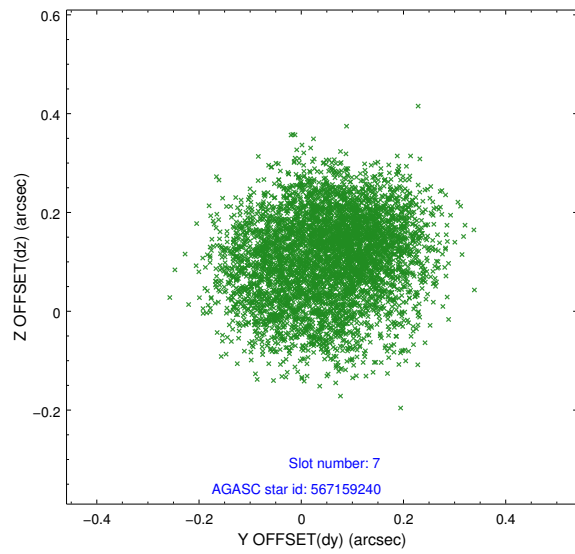
2.4.3 Slot 5



2.4.4 Slot 6

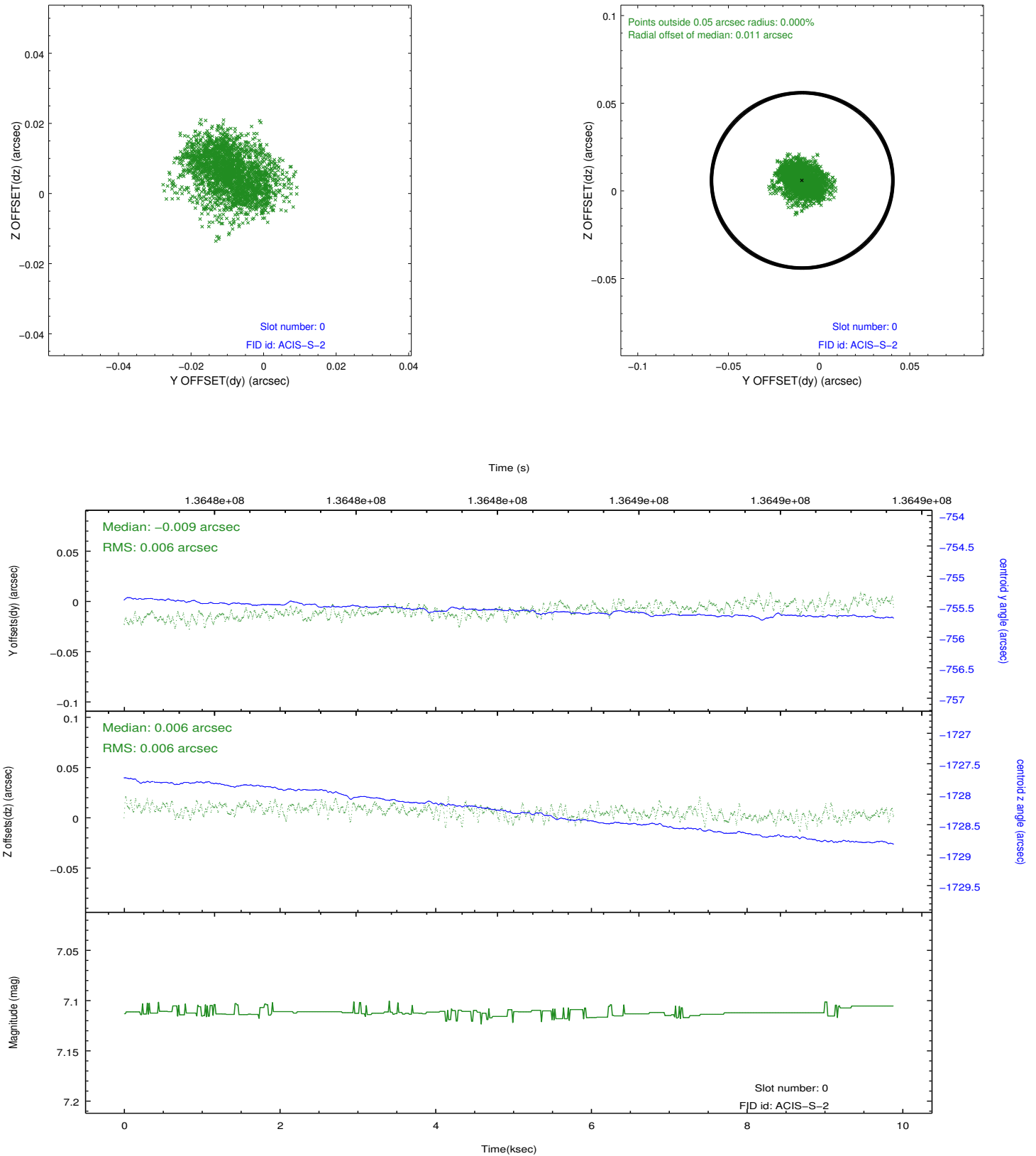


2.4.5 Slot 7

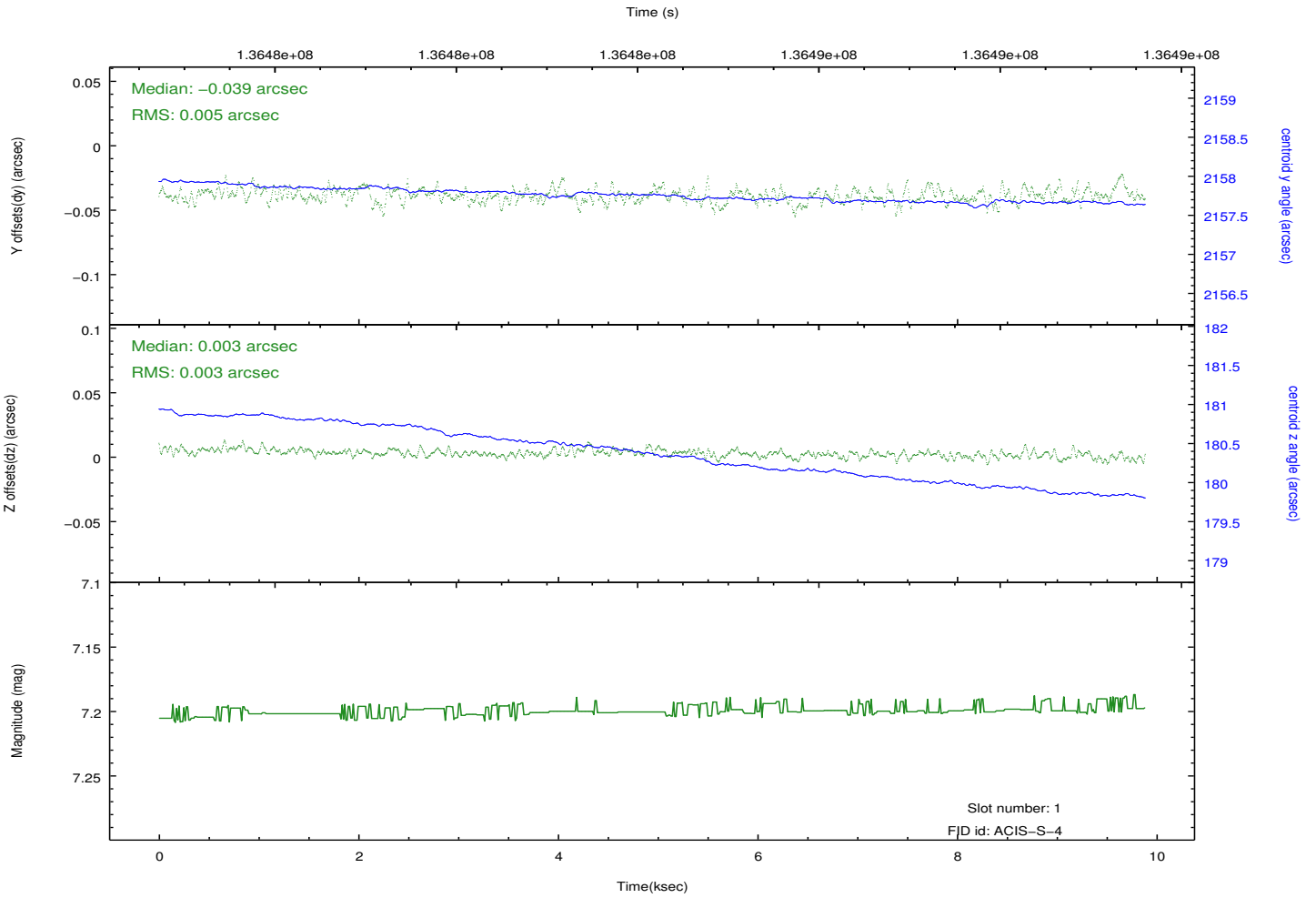
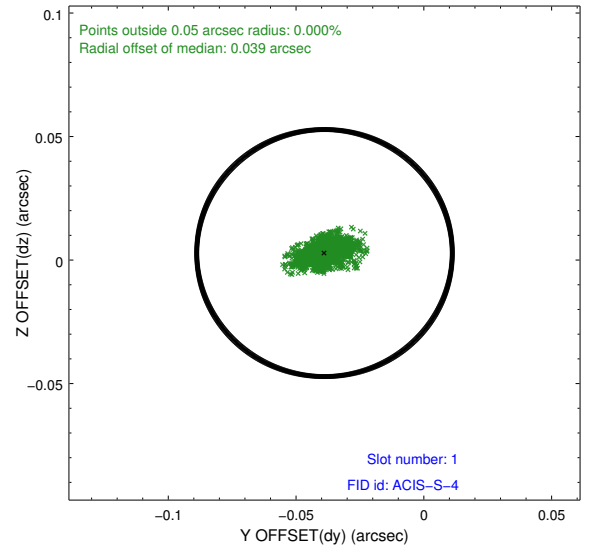
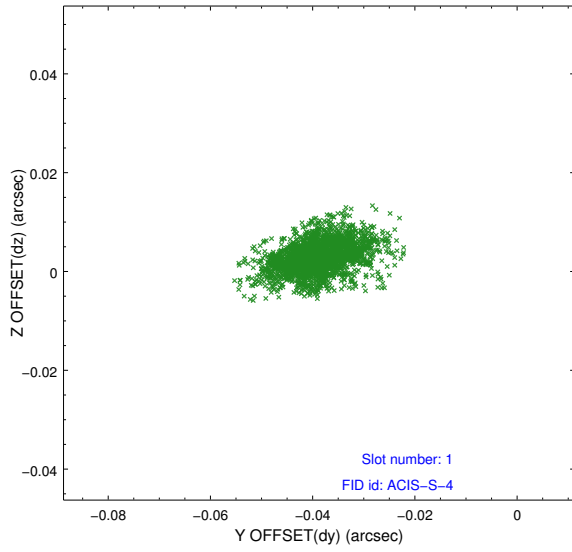


2.5 FID Slots

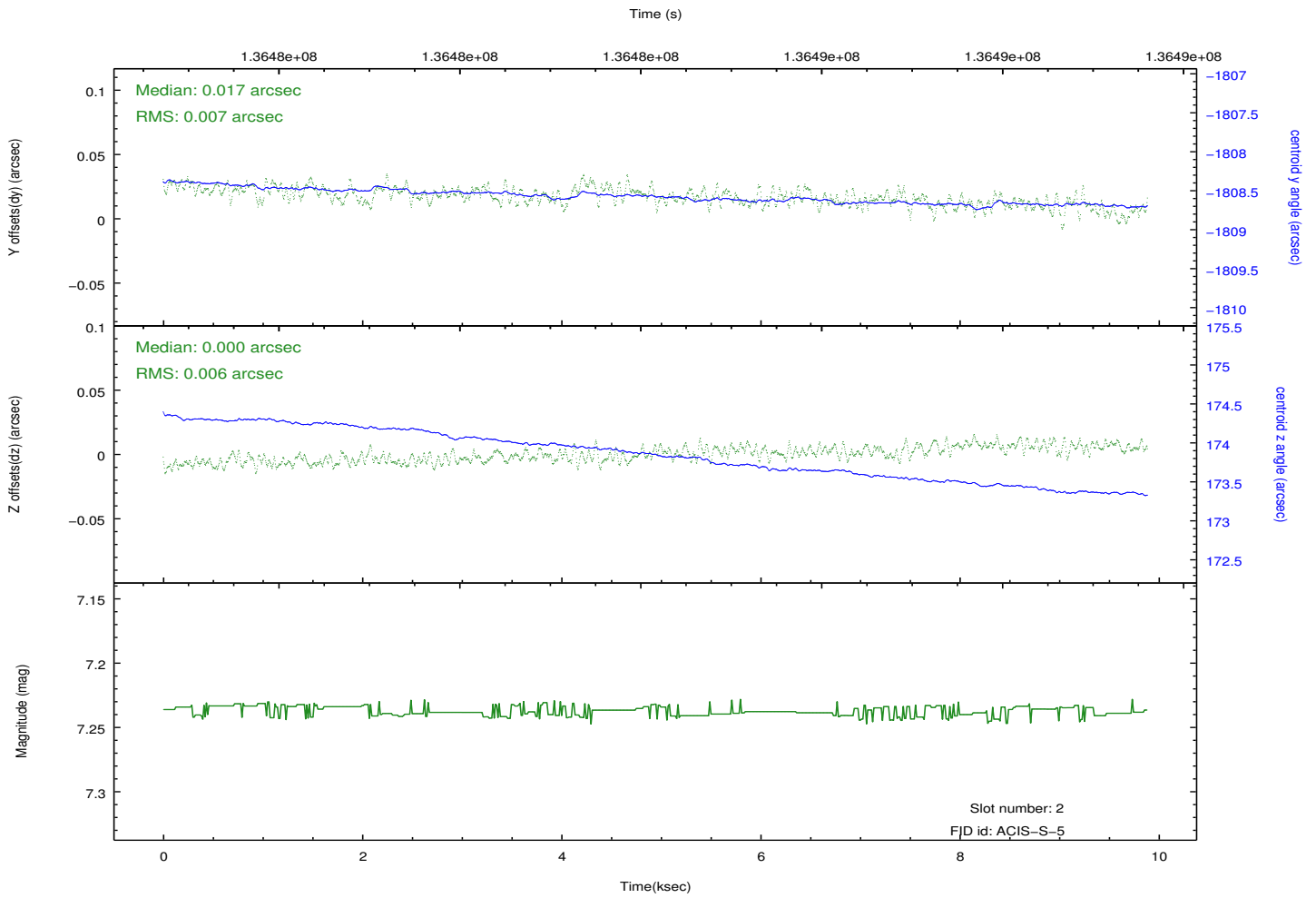
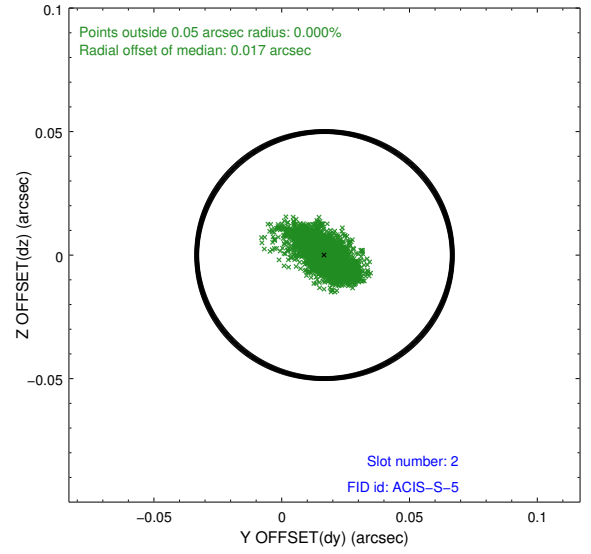
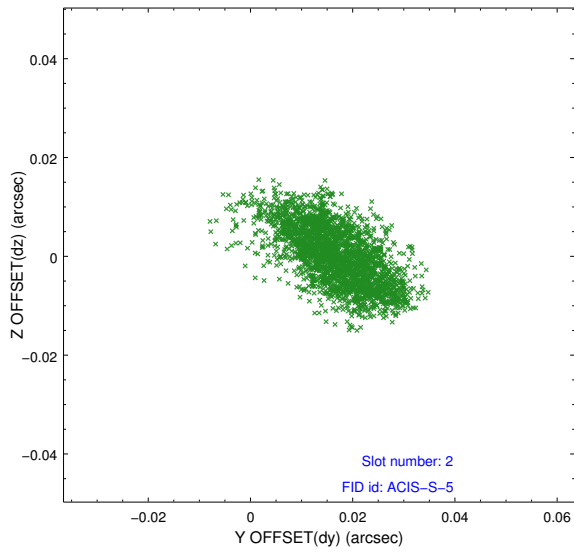
2.5.1 Slot 0



2.5.2 Slot 1



2.5.3 Slot 2



A Summary

A.1 Status

V&V Scientist	Beth Sundheim
V&V Date (YYYY-MM-DD)	2012.10.12
V&V Edition	1
V&V Disposition and Status	OK
V&V Charge Time	9.884

A.2 Comments