

V&V Reference Report

L2 ASCDS Version : 8.4.5

Observation 3166 - L2 Version 4
Chandra X-Ray Center

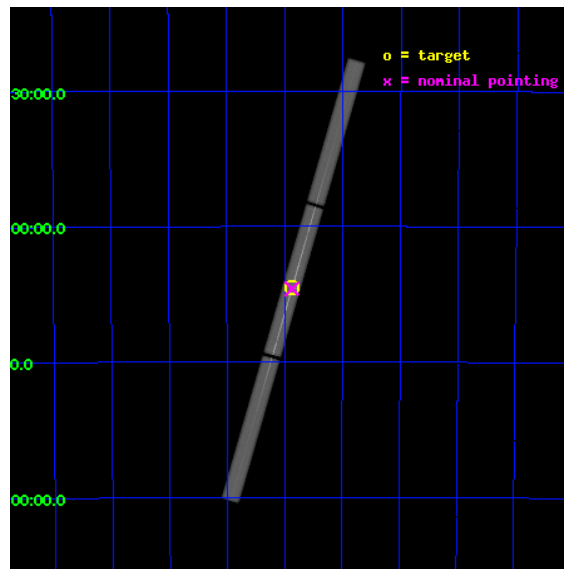
L2 Processing Date : Sep 28 2012

Contents

1	Front	2
2	OBI	3
2.1	OBI	3
2.1.1	Images	3
2.1.2	Parameters	4
2.1.3	Events	4
2.2	Compared Parameters	5
2.3	Aspect	6
2.4	Star Slots	9
2.4.1	Slot 3	9
2.4.2	Slot 4	10
2.4.3	Slot 5	11
2.4.4	Slot 6	12
2.4.5	Slot 7	13
2.5	FID Slots	14
2.5.1	Slot 0	14
2.5.2	Slot 1	15
2.5.3	Slot 2	16
3	Gratings	17
3.1	LETG Arm	17
A	Summary	19
A.1	Status	19
A.2	Comments	19

1 Front

seq_num	790060	Sequence number
obs_id	3166	Observation id
title	AO3 CALIBRATION OBSERVATIONS OF PKS2155-304	Proposal title
observer	Dr. CXC Calibration	Principal investigator
object	PKS2155-304	Source name
ra_targ	329.716667	Observer's specified target RA [deg]
dec_targ	-30.225556	Observer's specified target Dec [deg]
ra_nom	329.71800090344	Nominal RA [deg]
dec_nom	-30.230180692279	Nominal Dec [deg]
roll_nom	286.18331641833	Nominal Roll [deg]
revision	4	Processing version of data
ontime	29983.301200241	[s]
livetime	29777.812983053	Ontime multiplied by DTCOR
l2events	1797821	Number of level 2 events

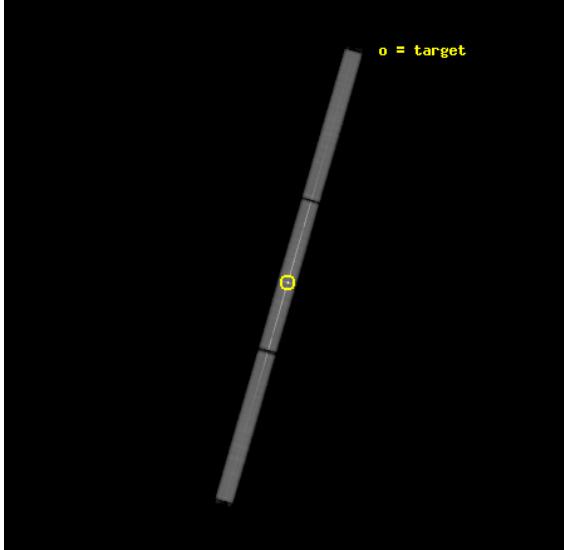


2 OBI

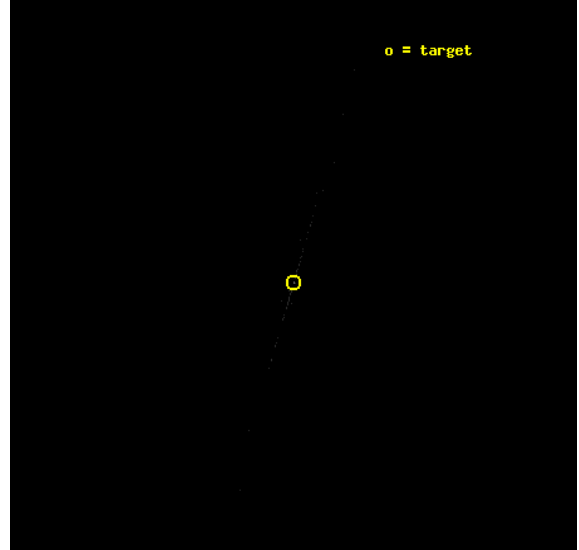
2.1 OBI

2.1.1 Images

Level 1 Image



Level 1 Bad Events



2.1.2 Parameters

obi_num	1	Obi number	sched_exp_time	30000.000000	[s] Scheduled observation exposure time
ascdsver	8.4.5	Processing system revision	ontime	29983.301200241	[s]
caldbver	4.5.2	 	l1events	2355116	Number of level 1 events
date	2012-09-28T06:47:42	Date and time of file creation			
revision	4	Processing version of data			

2.1.3 Events

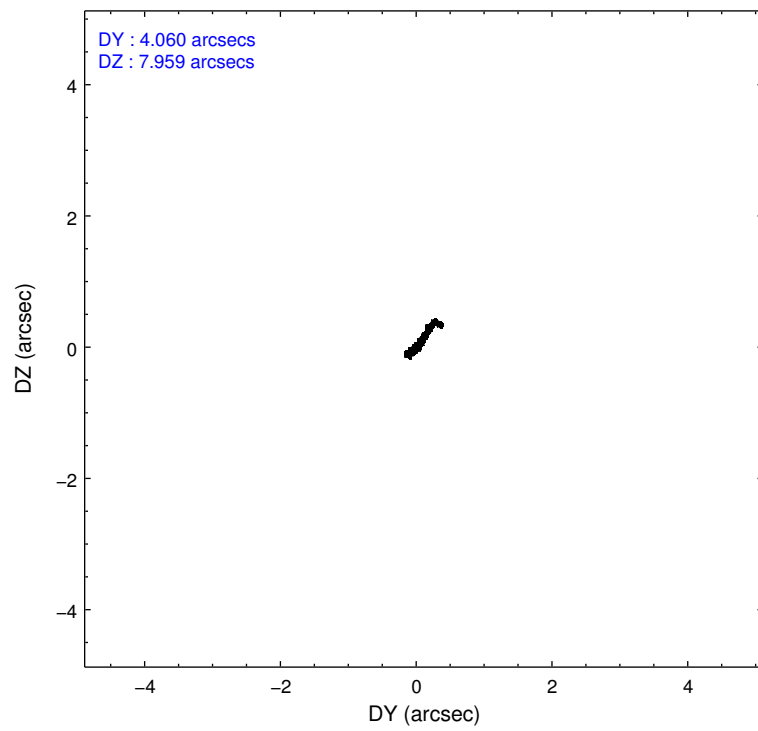
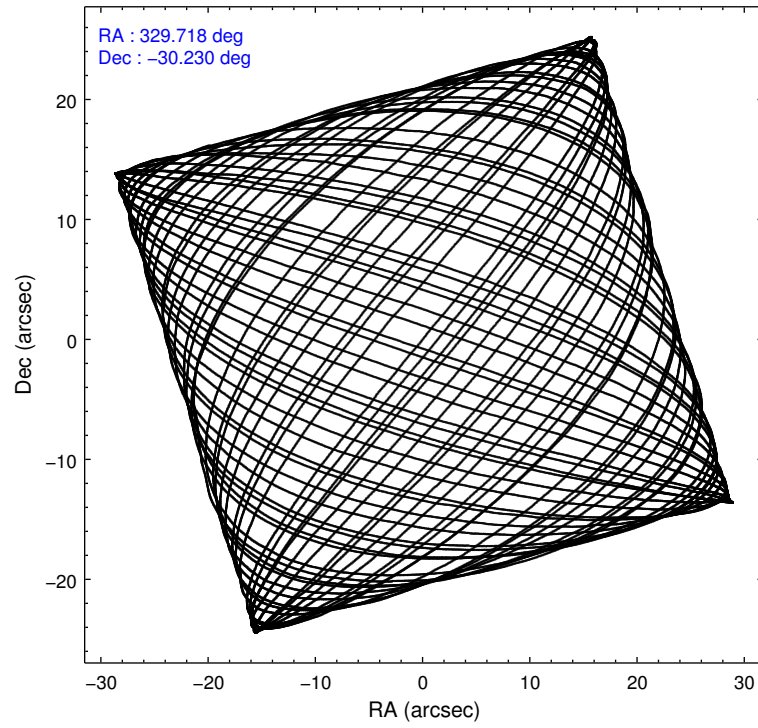
Level 1 Events

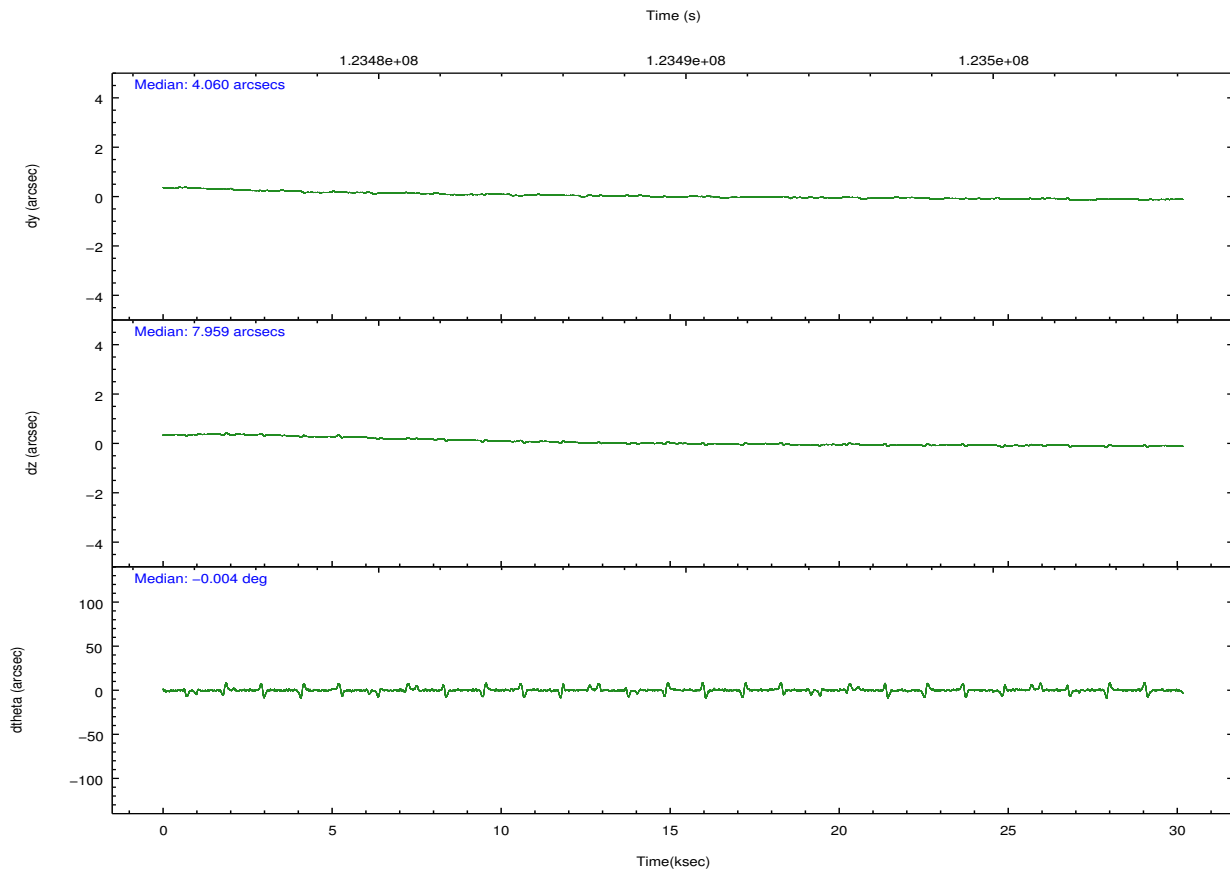
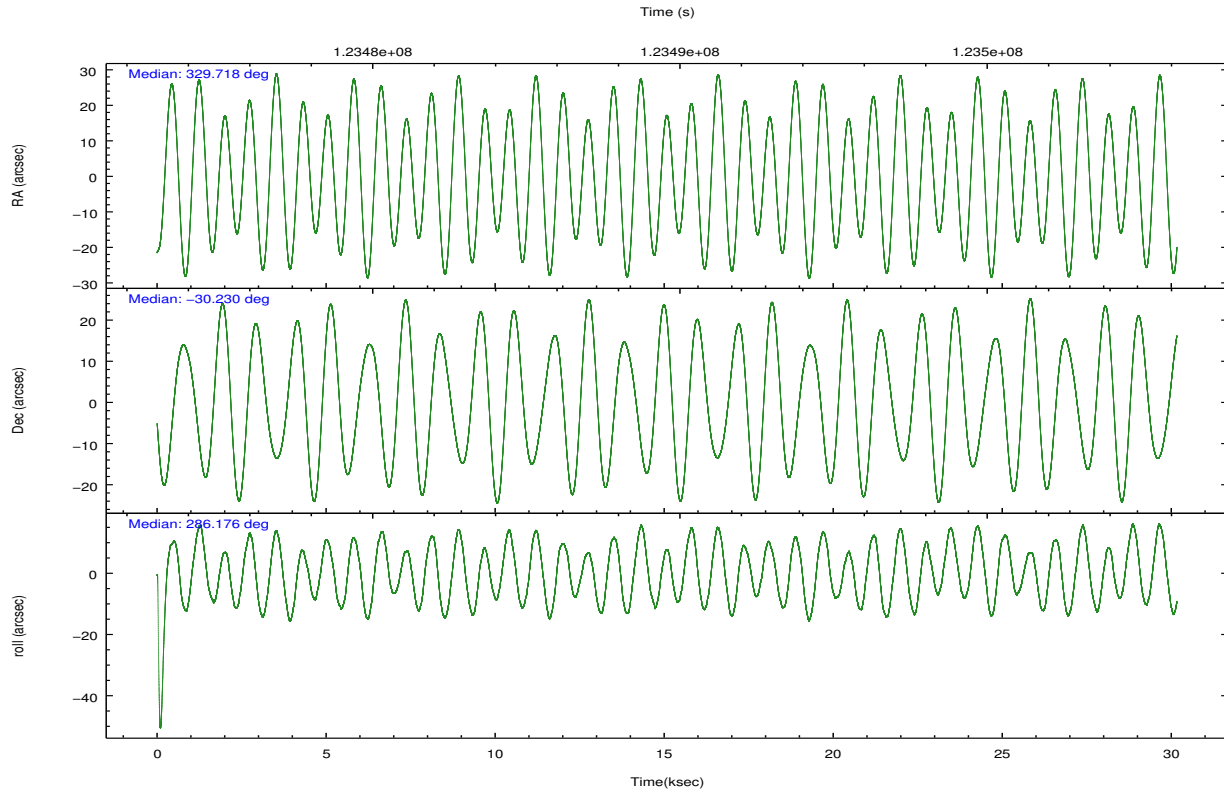
	segment 1	segment 2	segment 3
level 1 events	649771	1040010	665335
rejected events	1255	1937	1323
rejected %	0%	0%	0%

2.2 Compared Parameters

Parameter	Planned	Actual	Parameter	Planned	Actual
Instrument	HRC	HRC	Obspar format version number	7	7
Detector	HRC-S	HRC-S	Obspar file type	PREDICTED	ACTUAL
Grating	LETG	LETG	Obspar update status	NONE	UPDATED
Data mode	OBSERVING	OBSERVING			
Observation mode	POINTING	POINTING			
[deg] Pointing RA	329.693041	329.7180009034389			
[deg] Pointing Dec	-30.211336	-30.23018069227905			
[deg] Pointing Roll	286.103396	286.1833164183266			
[s] Window start time (MET)	122169664.184000	122169664.184000			
[s] Window stop time (MET)	124761664.184000	124761664.184000			
[mm] SIM focus pos	-1.429586	-1.428180813131781			
[mm] SIM defocus	0.1037507710433287	0.1051558262725154			
[mm] SIM translation stage pos	250.455976	250.466033080201			
[mm] SIM translation stage offset	0	-0.01005468664627074			
[s] Observation start time (MET)	123474664.184000	123474220.65141			
Observation start date	2001-11-30T02:30:00	2001-11-30T02:23:40			
[s] Observation end time (MET)	123504664.184000	123504906.59013			
Observation end date	2001-11-30T10:50:00	2001-11-30T10:55:06			

2.3 Aspect



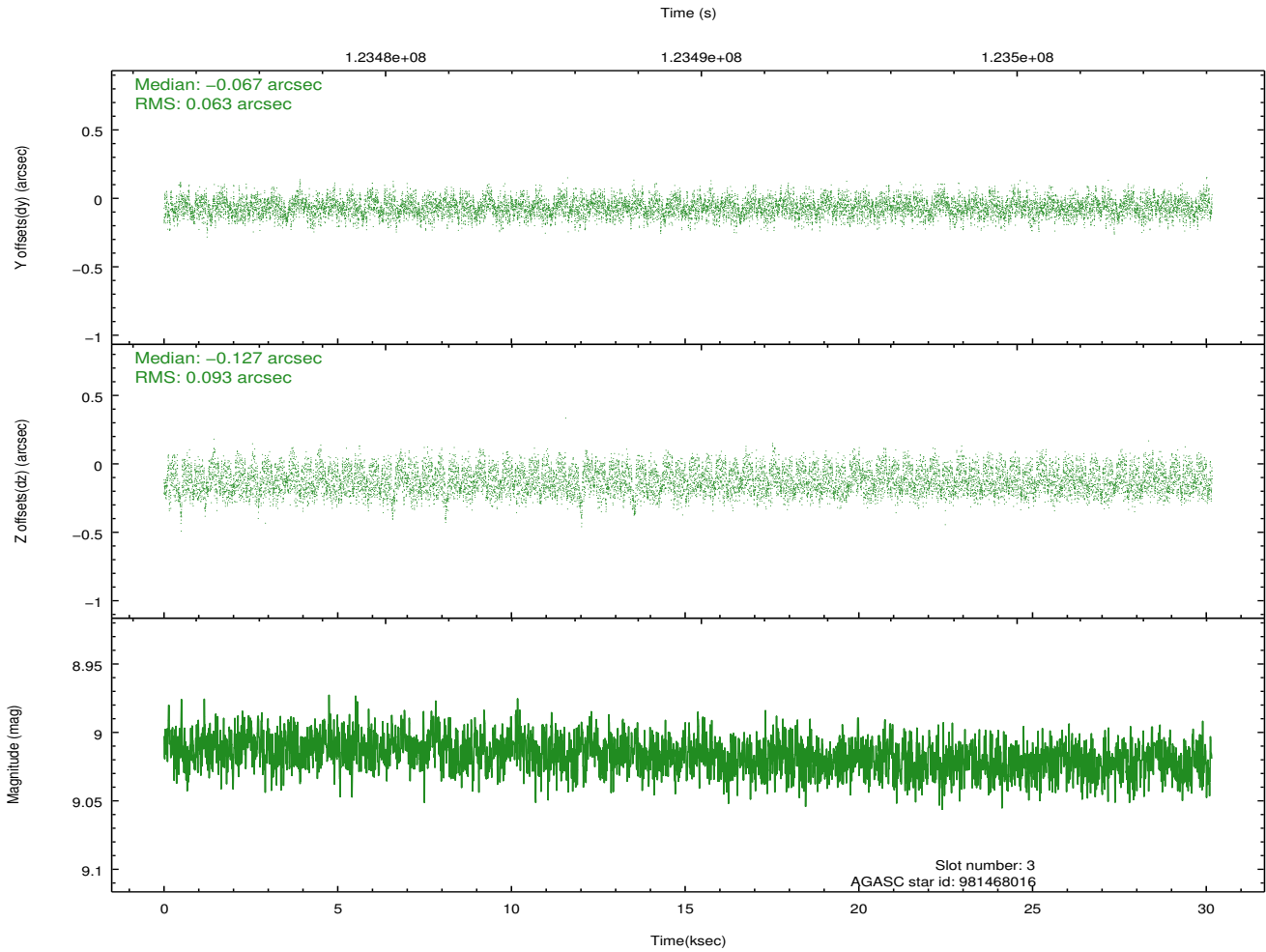
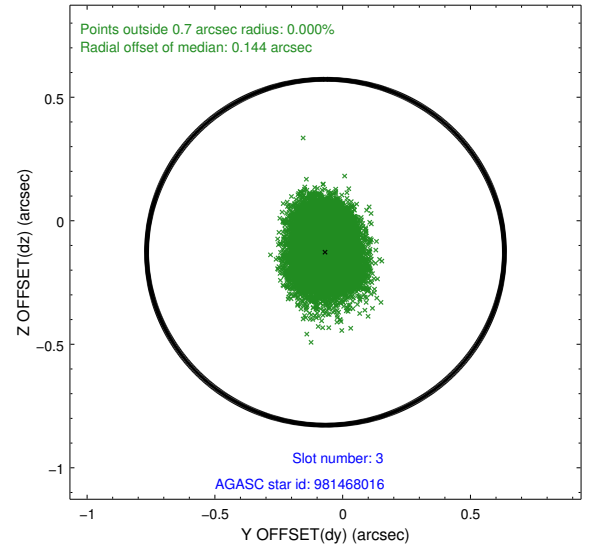
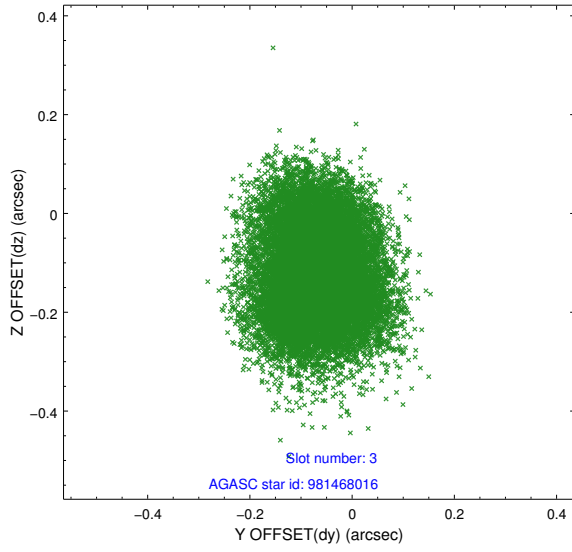


Slot Statistics

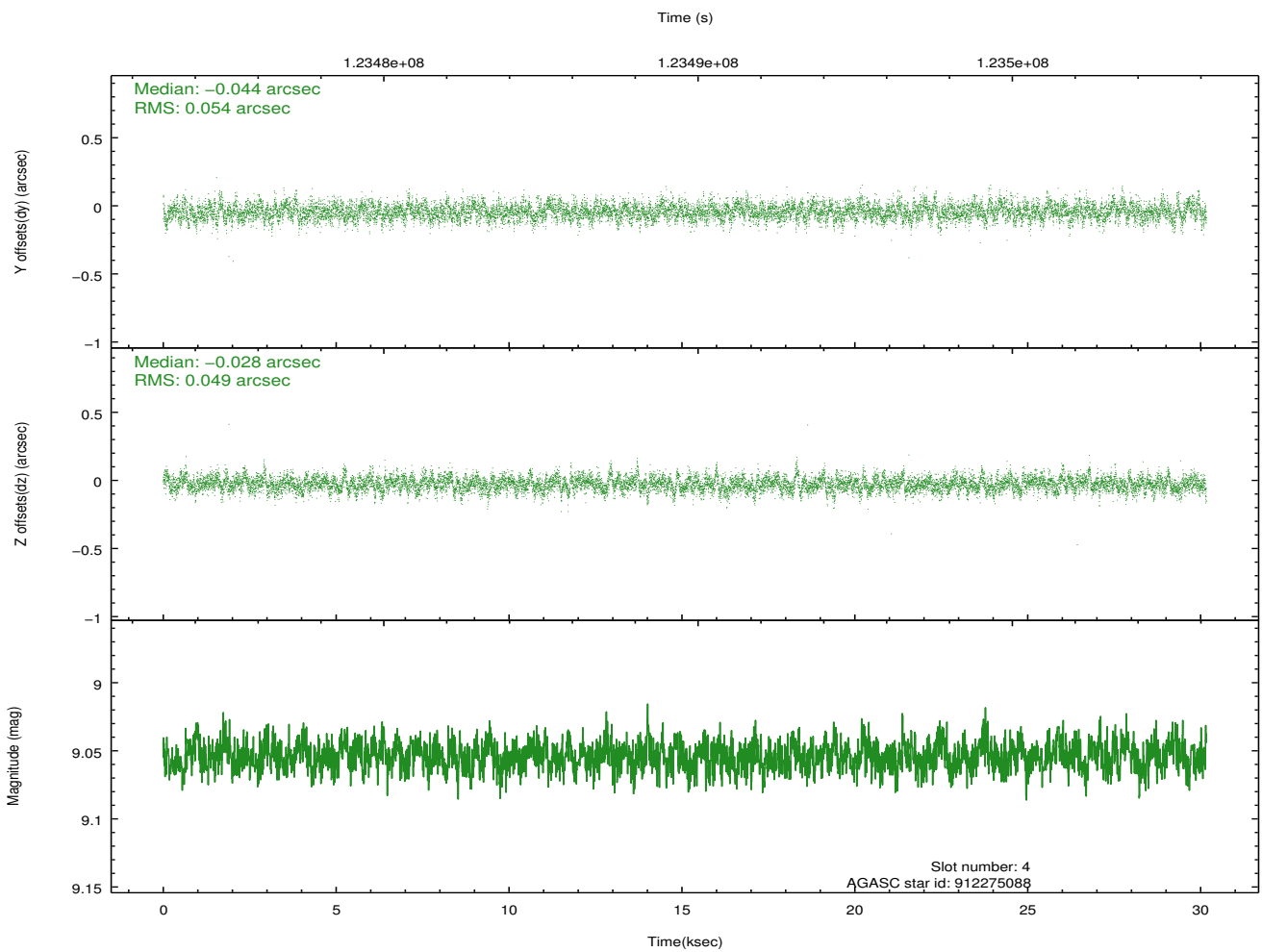
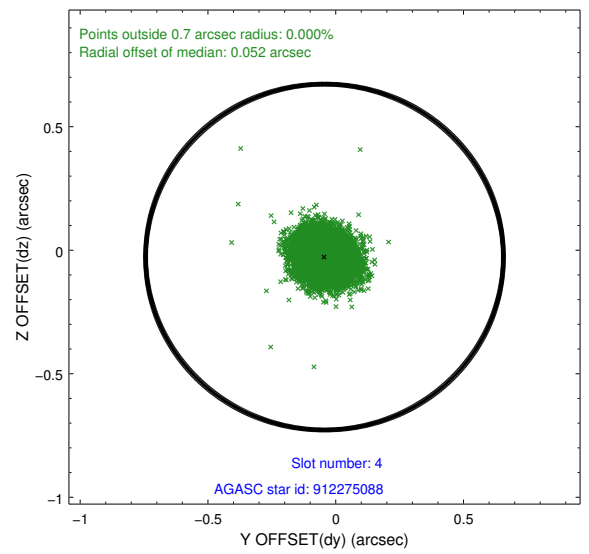
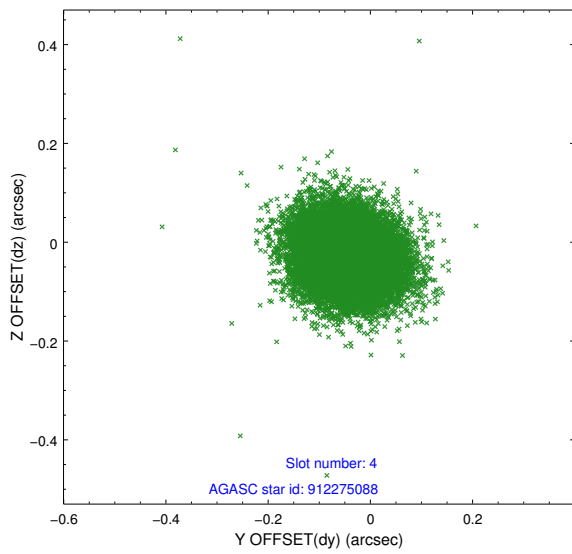
slot	status	id	mag	n_pts	med_dy	med_dz	dr1	dr2	ra	dec	mean_y	mean_z
0	FID	HRC-S-1	6.99	7358	0.157	-0.099	0.011	0.023	0.000000	0.000000	-1158.14	-456.59
1	FID	HRC-S-2	6.99	7358	0.069	-0.086	0.007	0.033	0.000000	0.000000	1241.29	-449.25
2	FID	HRC-S-3	7.01	7357	0.164	-0.118	0.011	0.027	0.000000	0.000000	-1160.69	572.87
3	GUIDE	981468016	9.02	14713	-0.067	-0.127	0.121	0.186	328.842457	-30.034984	-1335.45	-2373.44
4	GUIDE	912275088	9.05	14714	-0.044	-0.028	0.077	0.125	329.619228	-29.738698	-1698.75	250.25
5	GUIDE	981478152	9.41	14707	0.003	0.110	0.082	0.135	329.415589	-30.057192	-771.87	-676.54
6	GUIDE	981468128	9.37	14710	0.055	0.015	0.094	0.155	329.756350	-30.158334	-128.52	242.63
7	GUIDE	981469488	9.61	14702	0.051	0.024	0.098	0.158	329.261199	-30.045155	-945.34	-1127.38

2.4 Star Slots

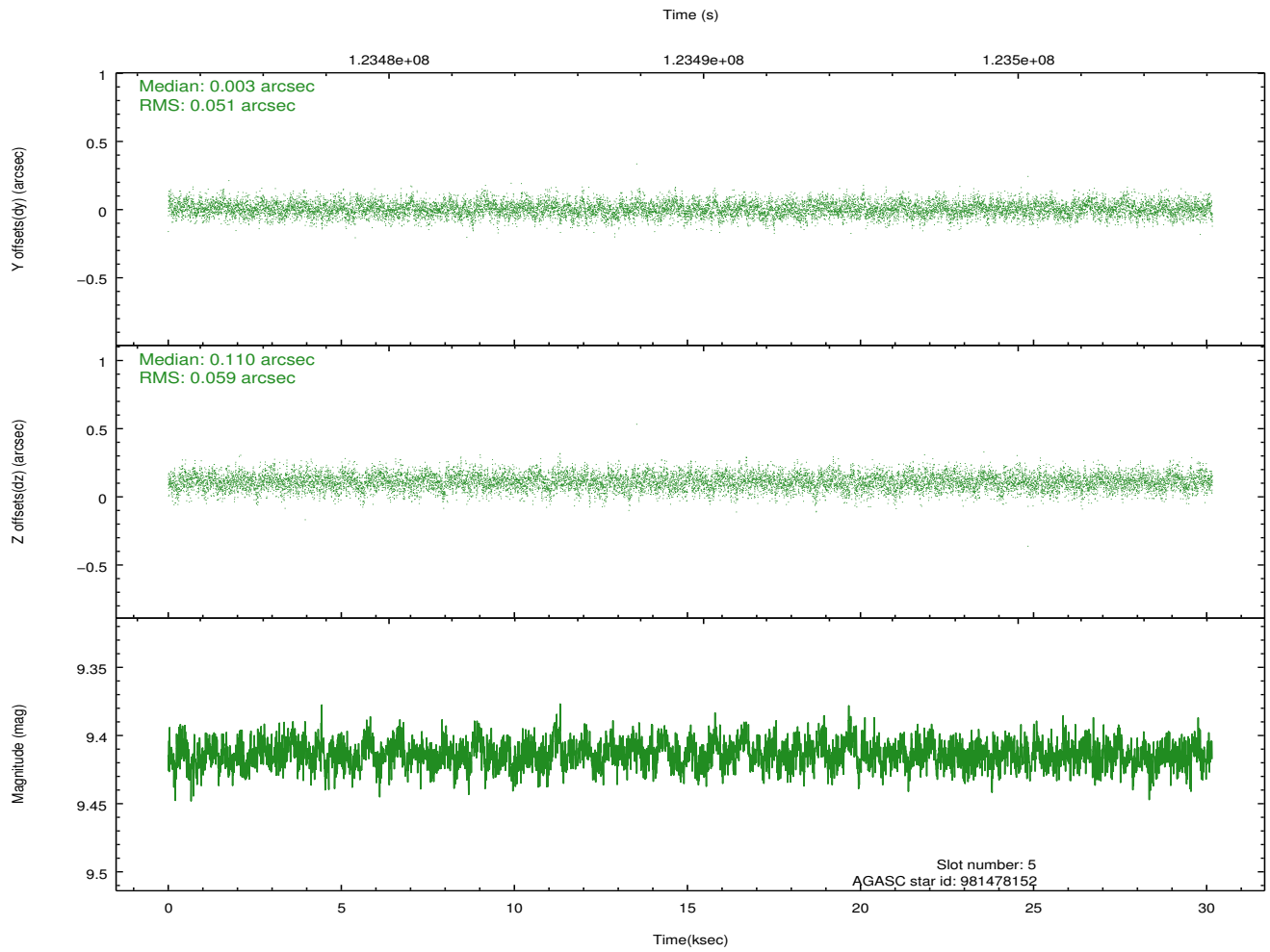
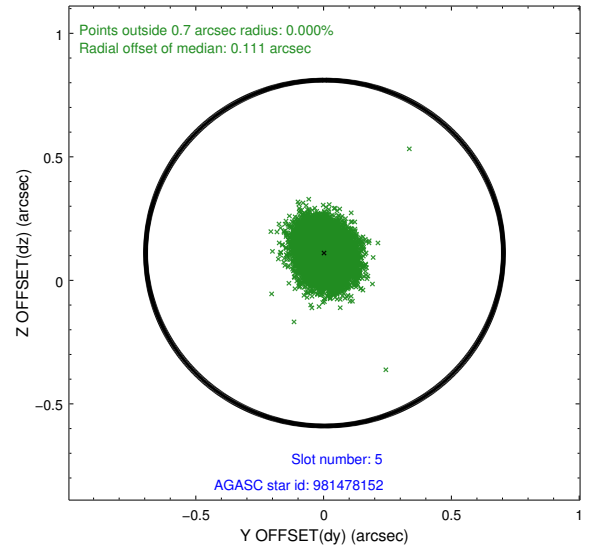
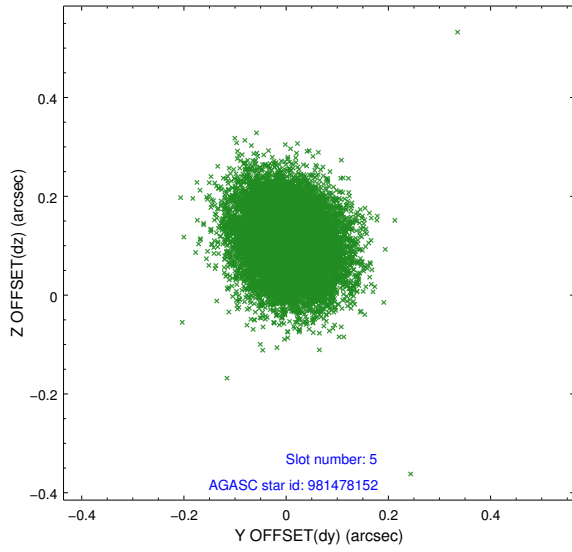
2.4.1 Slot 3



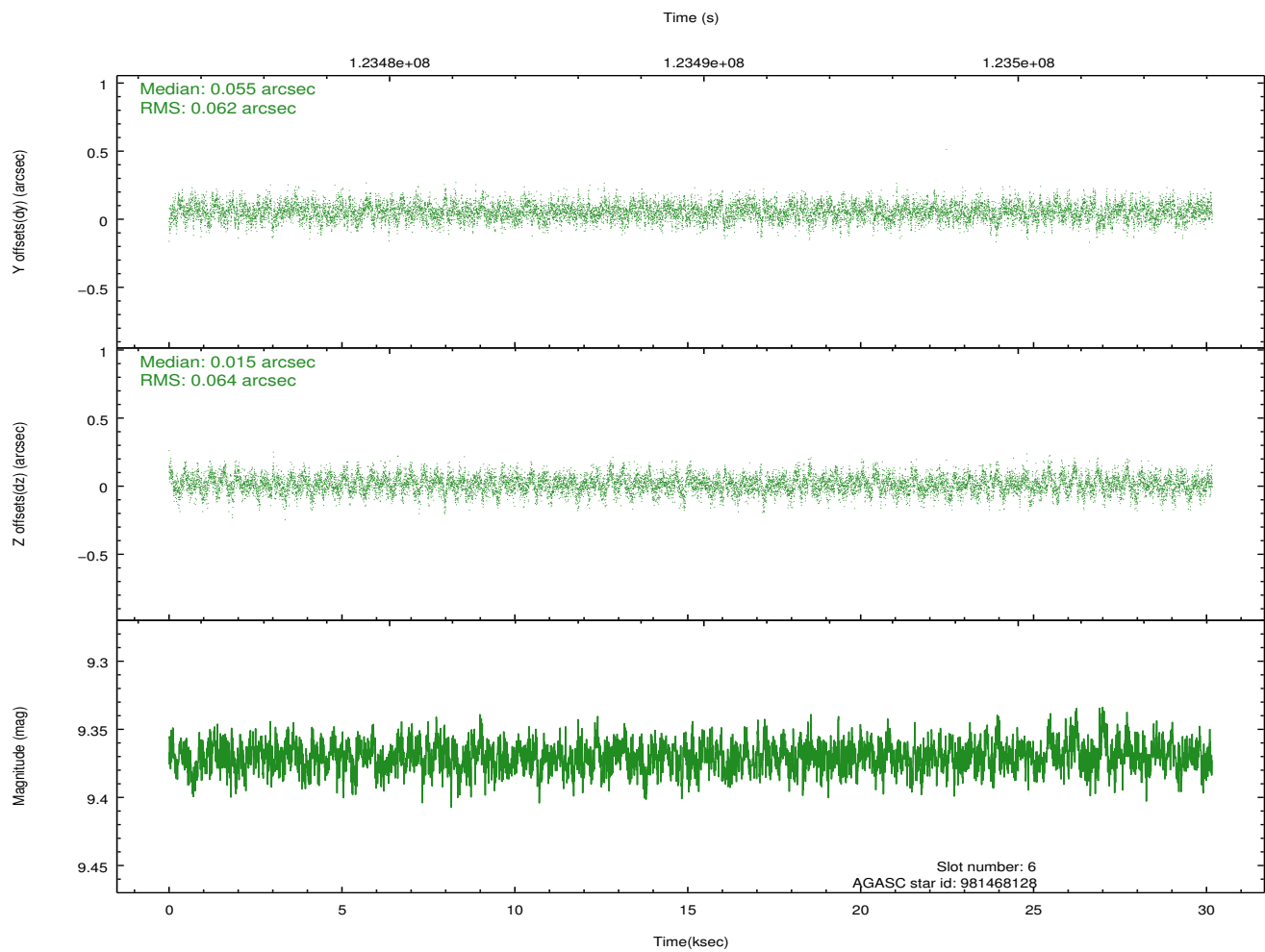
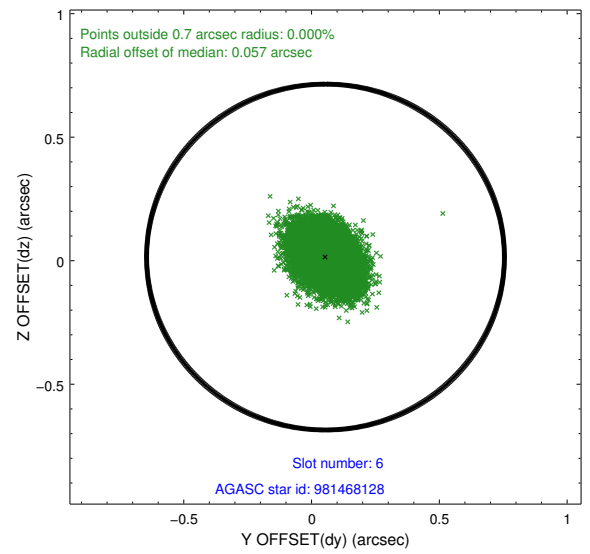
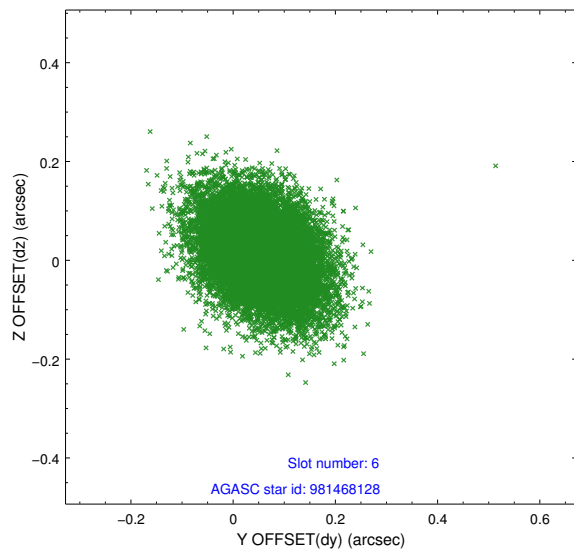
2.4.2 Slot 4



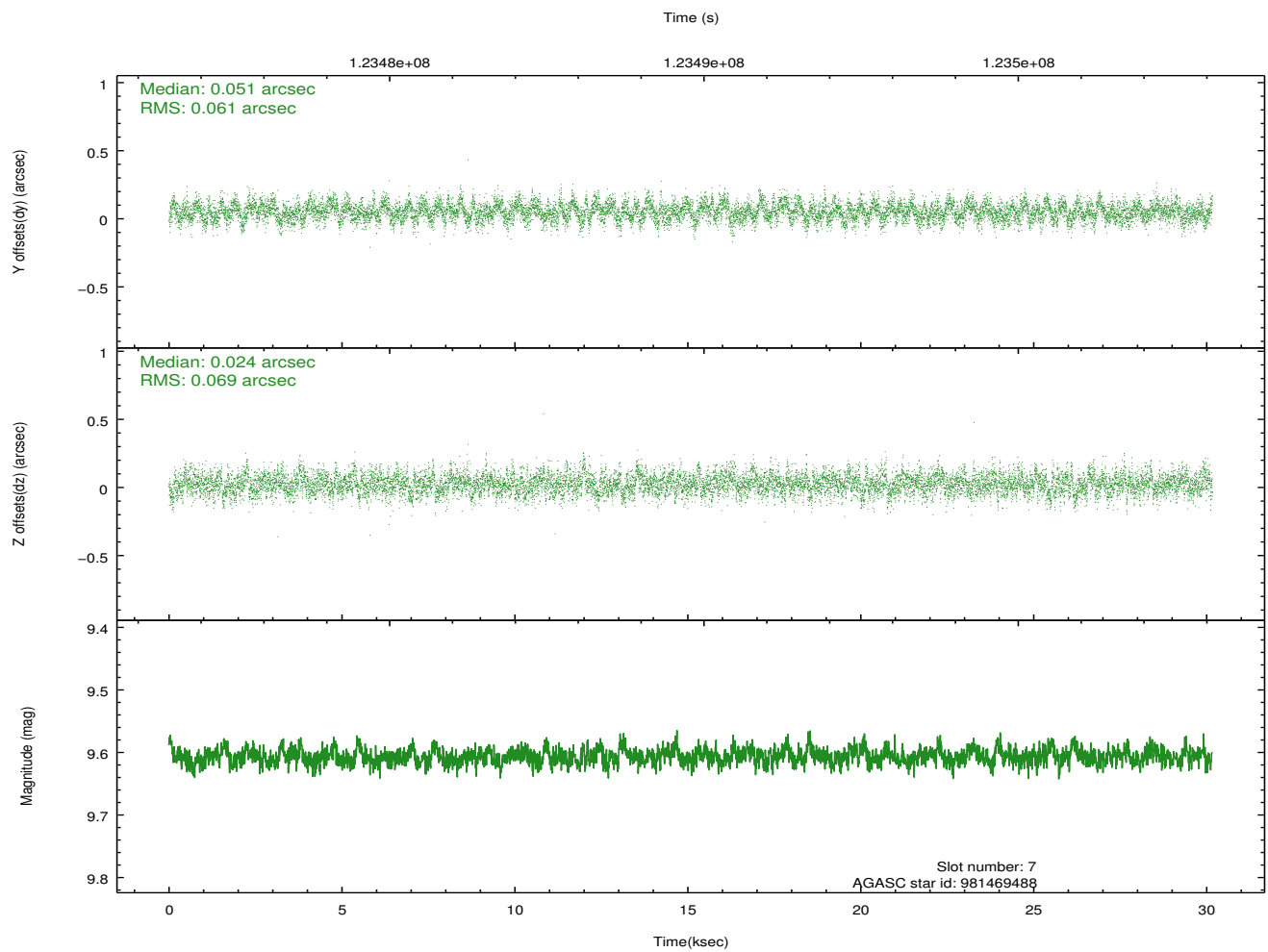
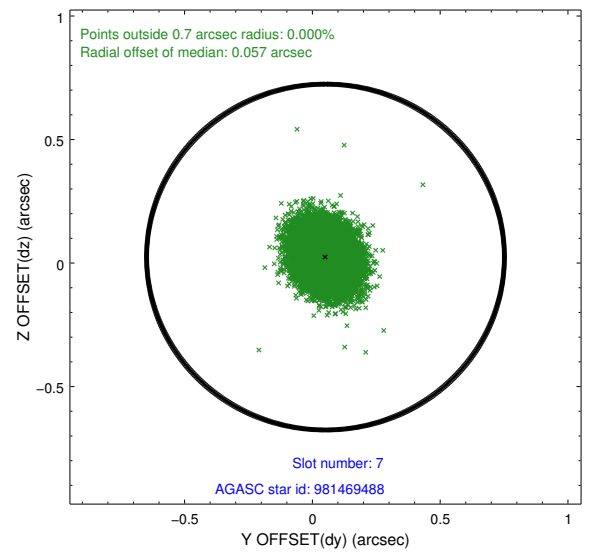
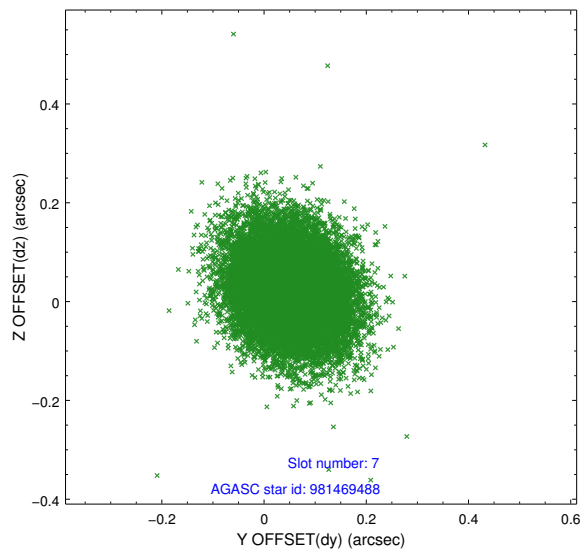
2.4.3 Slot 5



2.4.4 Slot 6

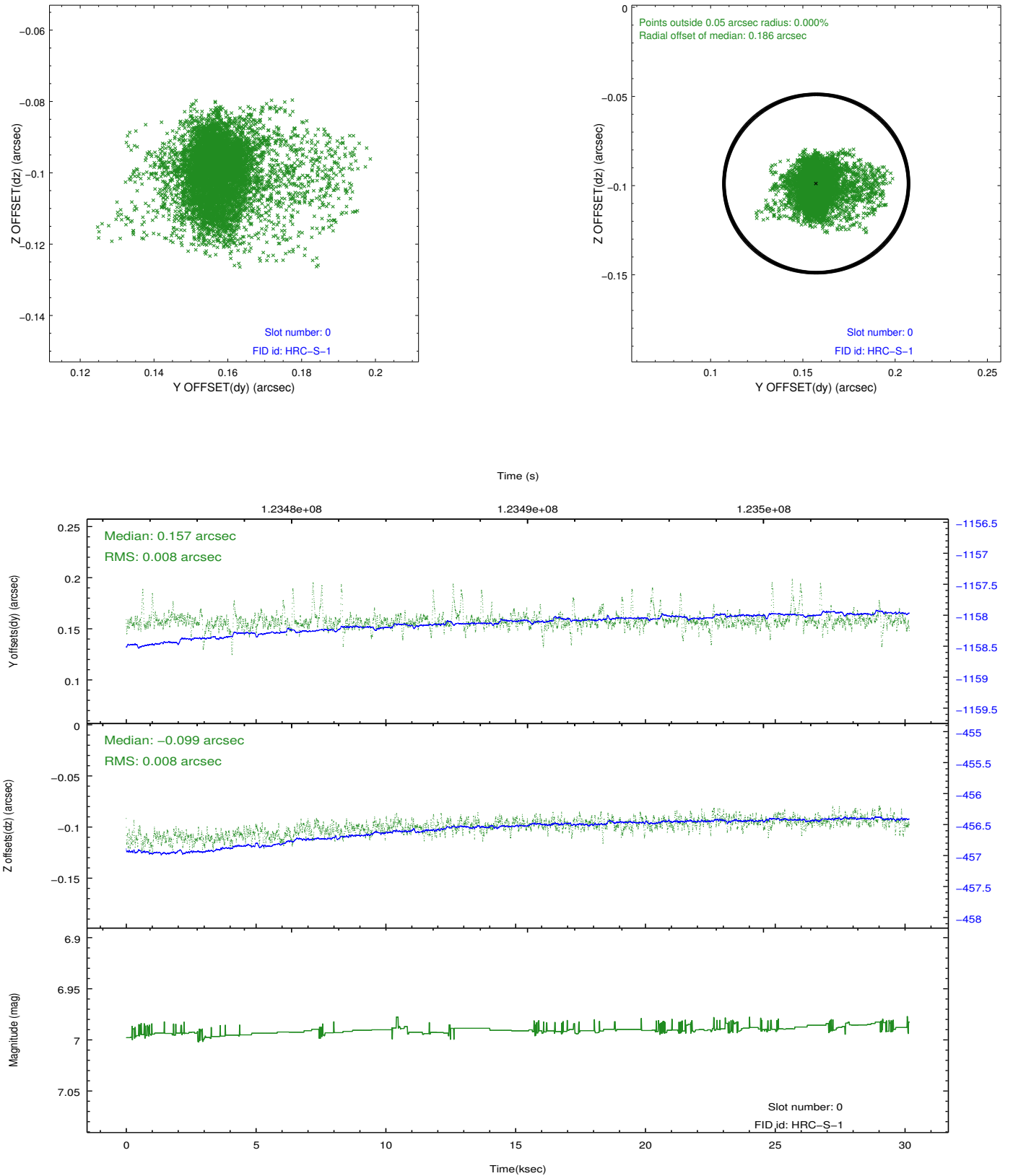


2.4.5 Slot 7

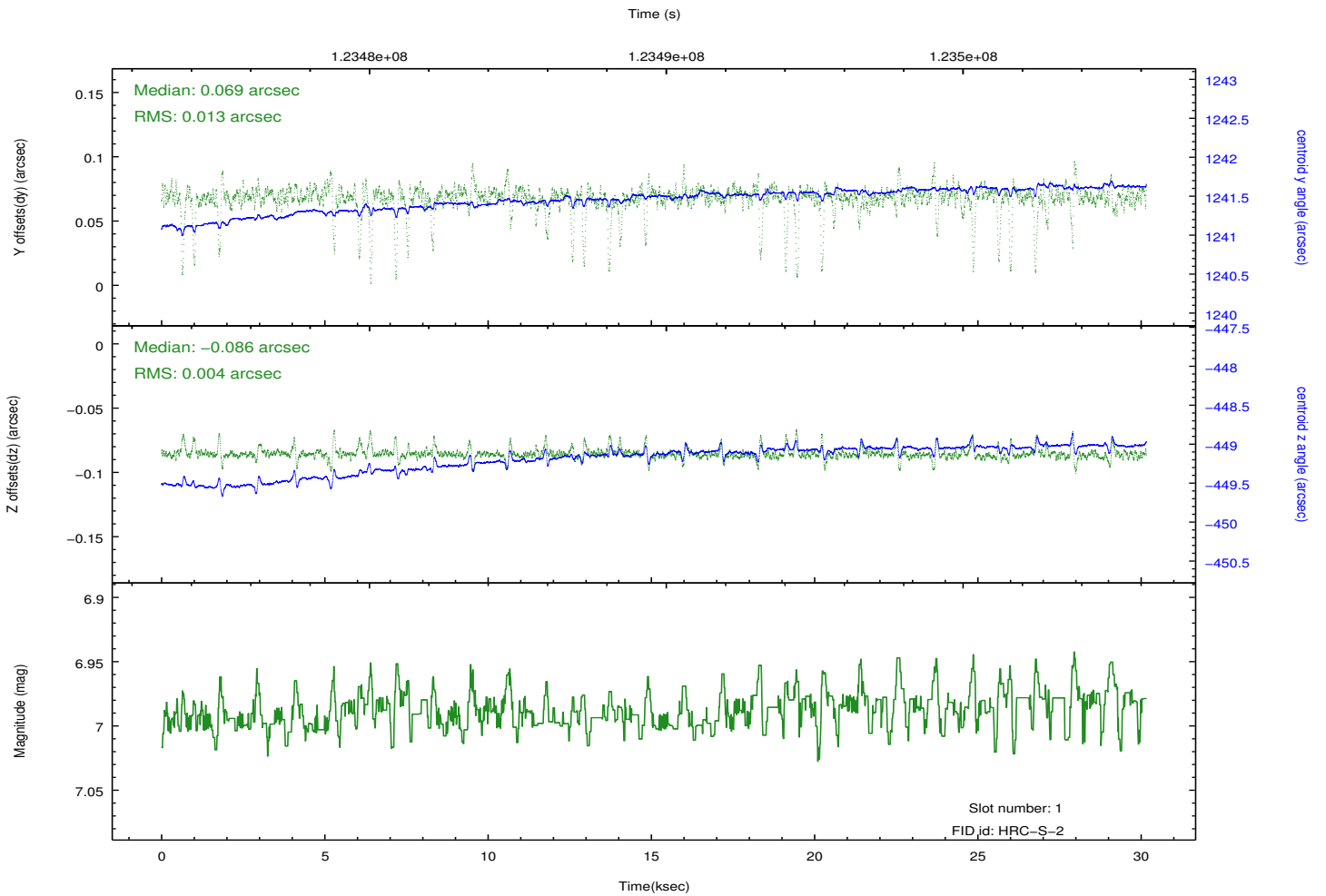
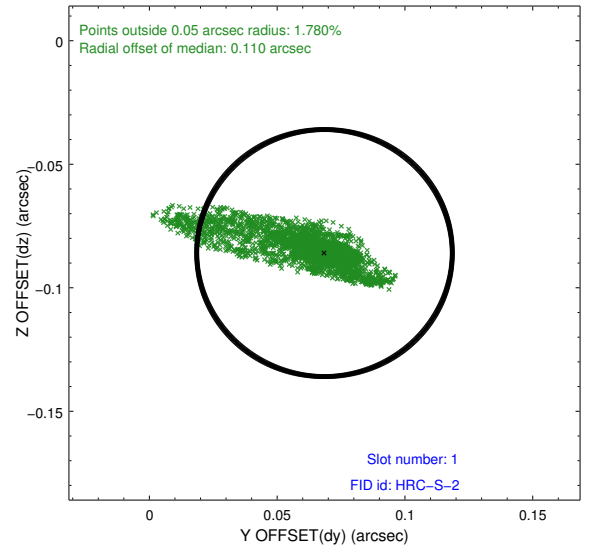
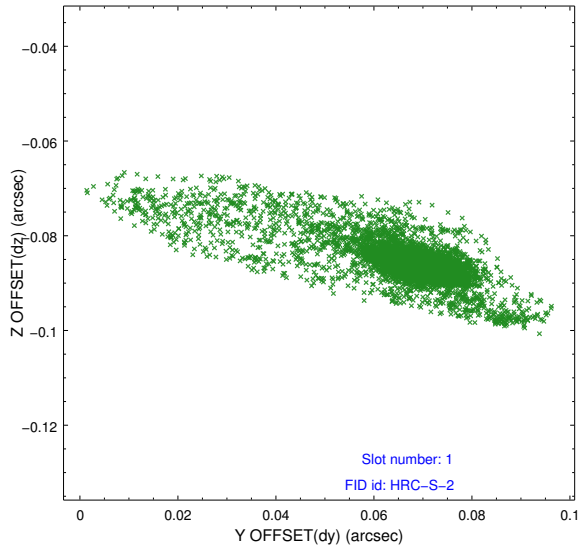


2.5 FID Slots

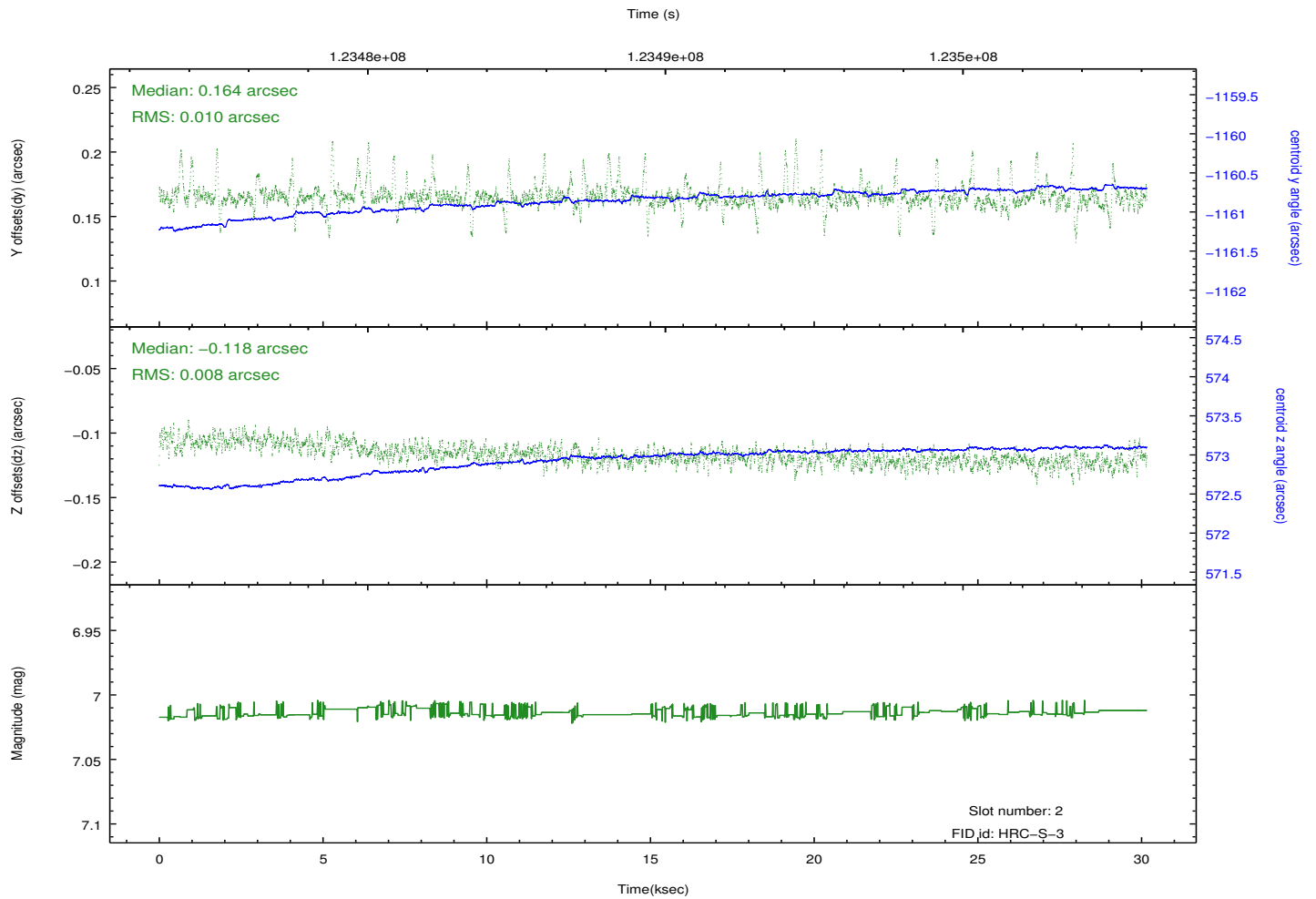
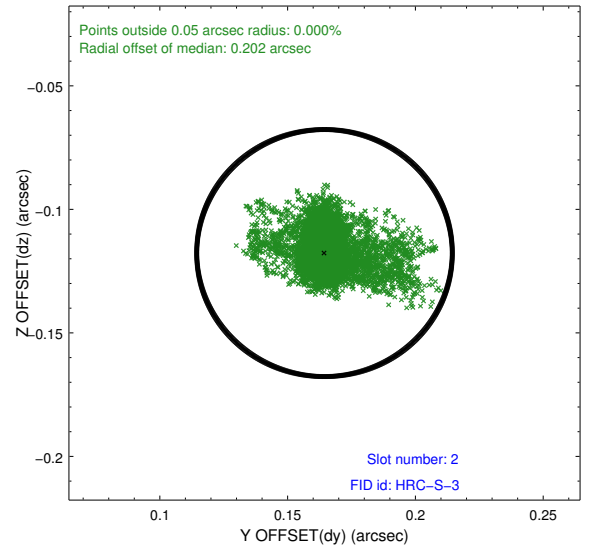
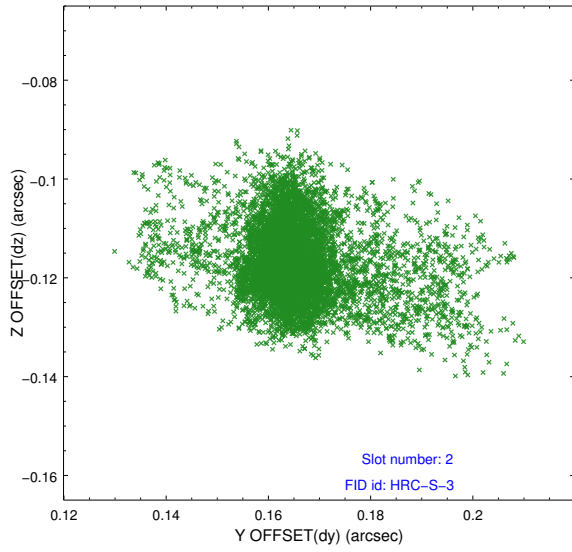
2.5.1 Slot 0



2.5.2 Slot 1

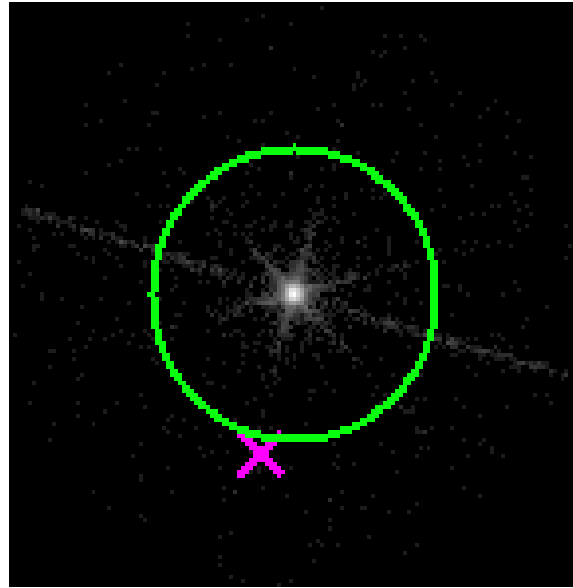


2.5.3 Slot 2

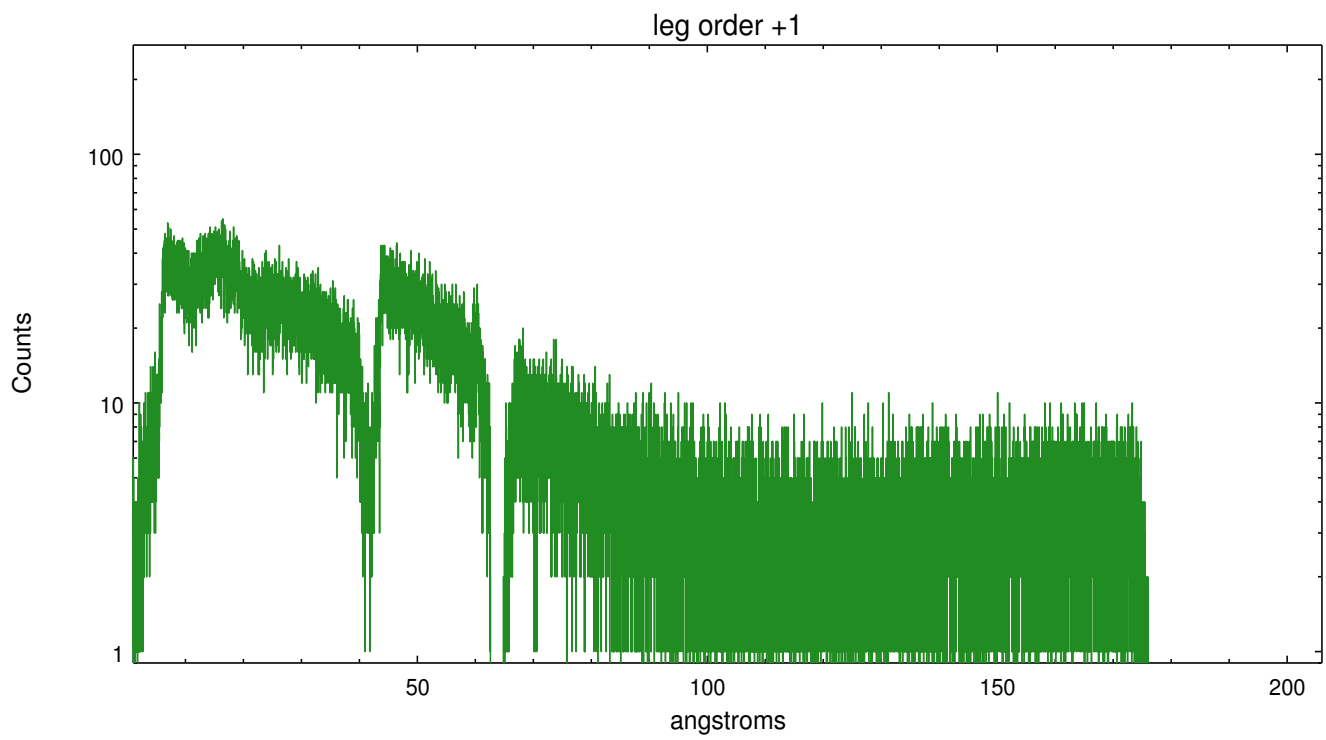
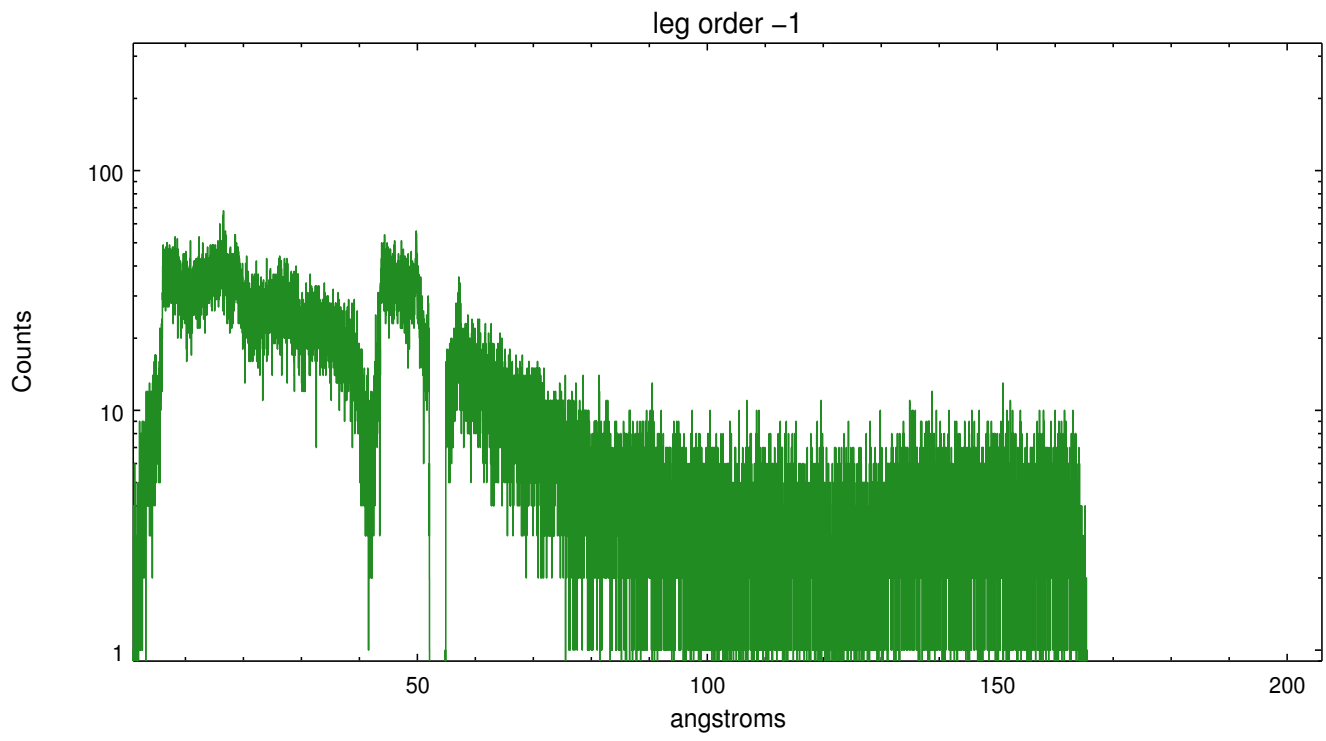


3 Gratings

3.1 LETG Arm



LETG Zero Order



A Summary

A.1 Status

V&V Scientist	Joy Nichols
V&V Date (YYYY-MM-DD)	2012.10.04
V&V Edition	2
V&V Disposition and Status	OK
V&V Charge Time	29.973

A.2 Comments

The zeroth order is piled up, but the tool `tgdetect` still found the zeroth order position with sufficient accuracy. Fid light data shows larger than normal rms, but do not exceed limits.