

# V&V Reference Report

## L2 ASCDS Version : 8.4.5

Observation 3186 - L2 Version 3  
Chandra X-Ray Center

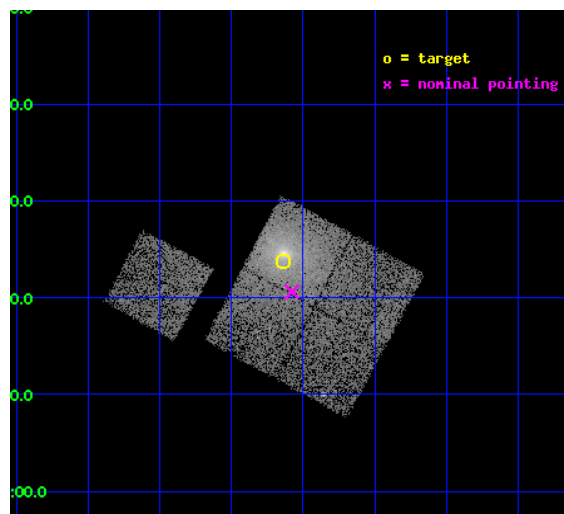
L2 Processing Date : Sep 30 2012

## Contents

<b>1</b>	<b>Front</b>	<b>2</b>
<b>2</b>	<b>OBI</b>	<b>3</b>
2.1	OBI . . . . .	3
2.1.1	Images . . . . .	3
2.1.2	Bias . . . . .	3
2.1.3	Parameters . . . . .	4
2.1.4	Events . . . . .	4
2.2	Compared Parameters . . . . .	5
2.3	Aspect . . . . .	6
2.4	Star Slots . . . . .	9
2.4.1	Slot 3 . . . . .	9
2.4.2	Slot 4 . . . . .	10
2.4.3	Slot 5 . . . . .	11
2.4.4	Slot 6 . . . . .	12
2.4.5	Slot 7 . . . . .	13
2.5	FID Slots . . . . .	14
2.5.1	Slot 0 . . . . .	14
2.5.2	Slot 1 . . . . .	15
2.5.3	Slot 2 . . . . .	16
<b>A</b>	<b>Summary</b>	<b>17</b>
A.1	Status . . . . .	17
A.2	Comments . . . . .	17

# 1 Front

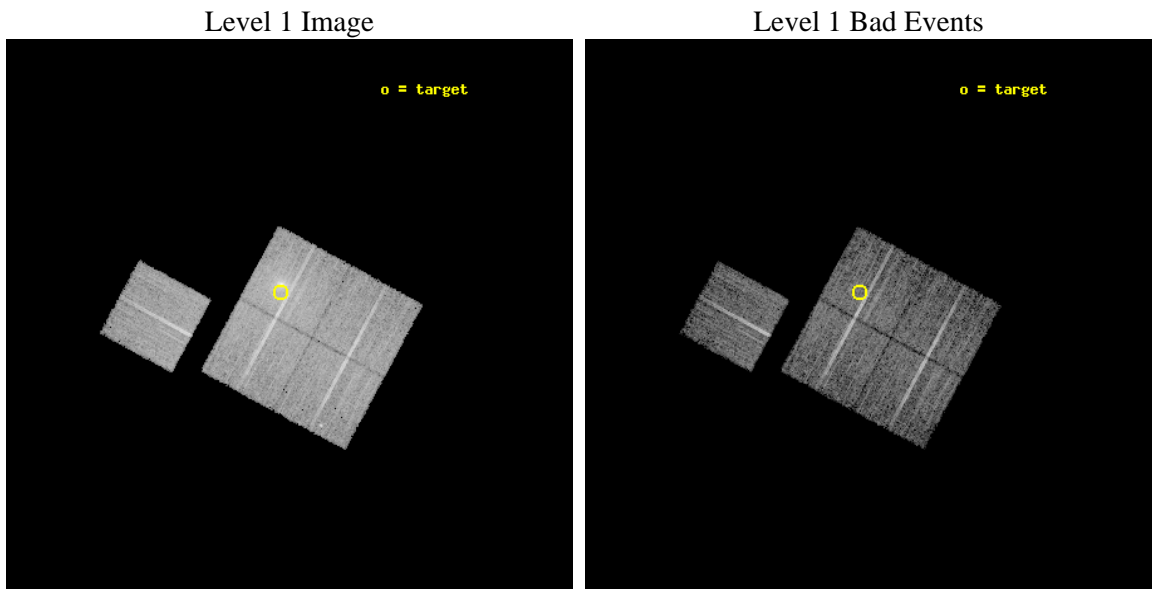
seq_num	800186	Sequence number
obs_id	3186	Observation id
title	OLEGS OR FOSSIL GROUPS -- STUDYING EVOLVED GALAXY SYSTEMS	Proposal
observer	Dr. Stephen Murray	Principal investigator
object	NGC1550-A	Source name
dtcycle	0	&#160
cycle	P	events from which exps? Prim/Second/Both
ra_targ	64.90938	Observer's specified target RA [deg]
dec_targ	2.395	Observer's specified target Dec [deg]
ra_nom	64.894745009997	Nominal RA [deg]
dec_nom	2.3433494370388	Nominal Dec [deg]
roll_nom	298.46104203554	Nominal Roll [deg]
revision	3	Processing version of data
ontime	10120.437601283	Sum of GTIs [s]
livetime	9988.2066334647	Livetime [s]
ontime0	10120.314481288	Sum of GTIs [s]
ontime1	10123.496491522	Sum of GTIs [s]
ontime2	10120.396561265	Sum of GTIs [s]
ontime3	10120.437601283	Sum of GTIs [s]
ontime6	10120.273441285	Sum of GTIs [s]
l2events	48854	Number of level 2 events



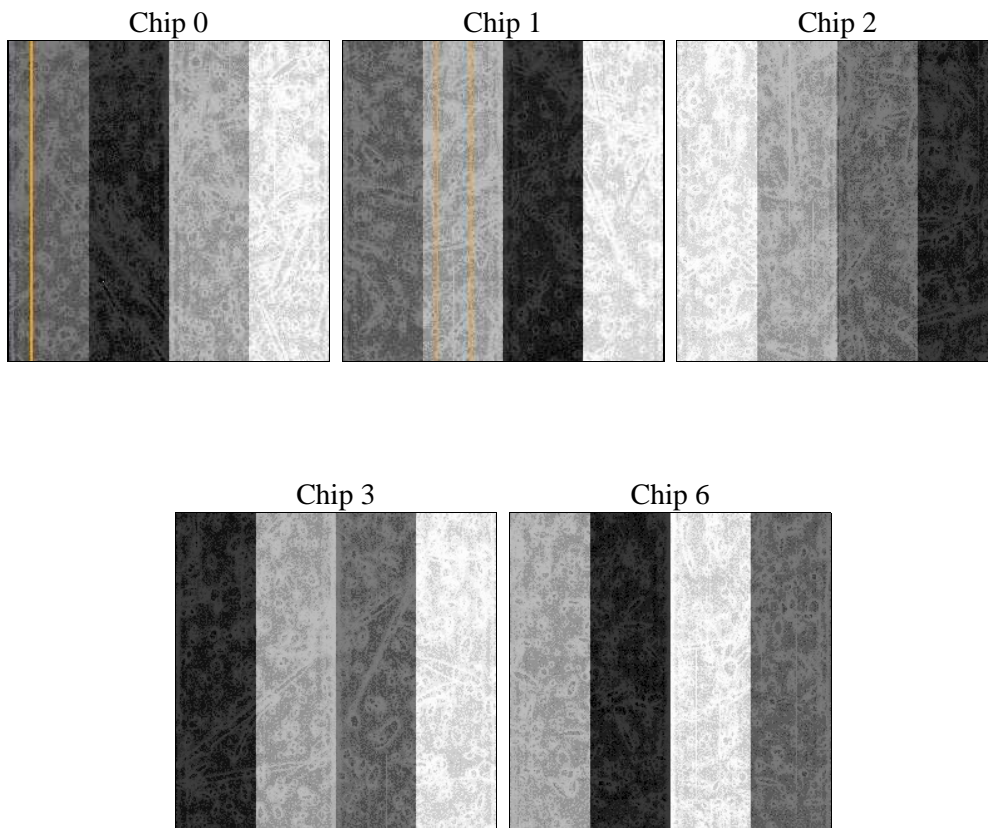
## 2 OBI

### 2.1 OBI

#### 2.1.1 Images



#### 2.1.2 Bias



### 2.1.3 Parameters

obi_num	0	Obi number	sched_exp_time	10000.000000	[s] Scheduled observation exposure time
ascdsver	8.4.5	Processing system revision	ontime	10120.437601283	Sum of GTIs [s]
caldbver	4.5.2	&#160	ontime0	10120.314481288	Sum of GTIs [s]
date	2012-09-30T03:53:52	Date and time of file creation	ontime1	10123.496491522	Sum of GTIs [s]
revision	3	Processing version of data	ontime2	10120.396561265	Sum of GTIs [s]
			ontime3	10120.437601283	Sum of GTIs [s]
			ontime6	10120.273441285	Sum of GTIs [s]
			l1events	302402	Number of level 1 events

### 2.1.4 Events

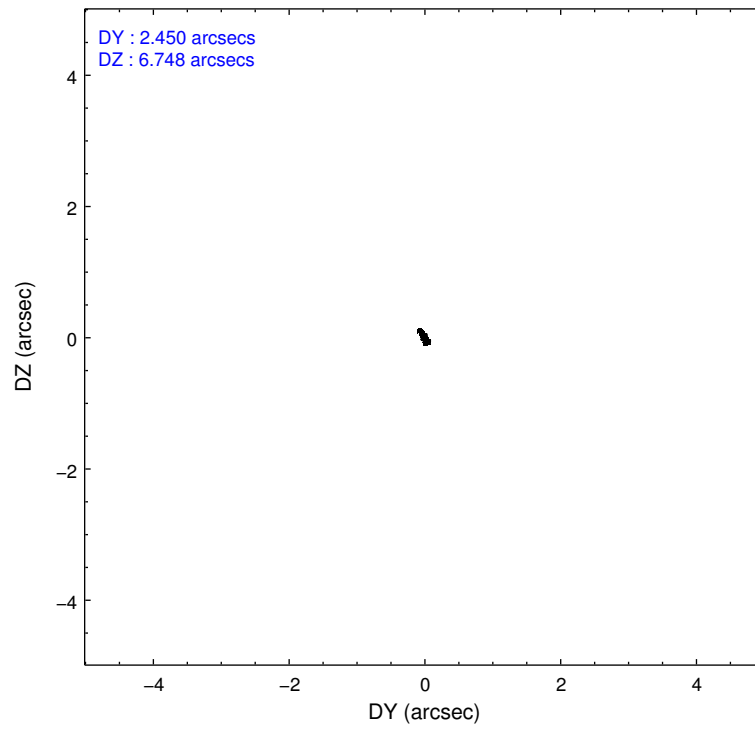
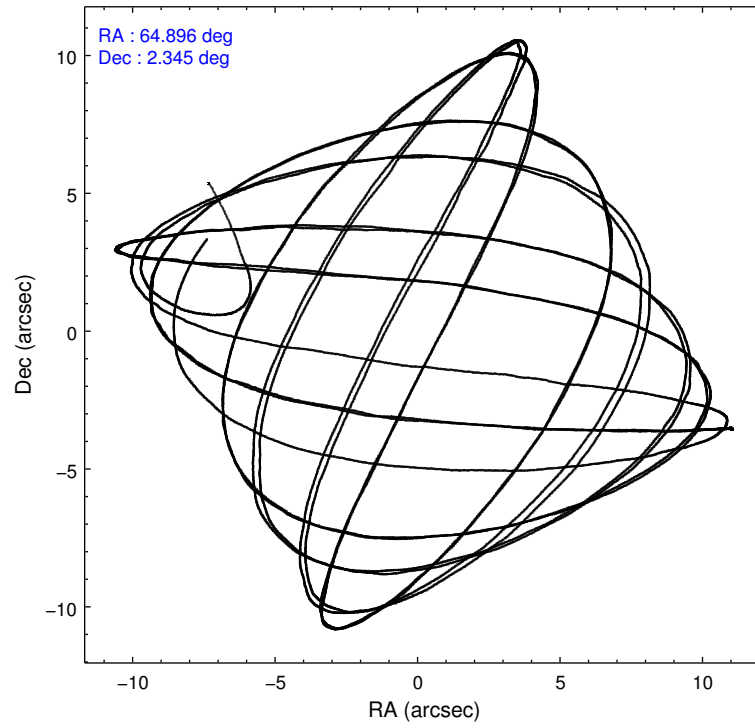
	ccd 0	ccd 1	ccd 2	ccd 3	ccd 6
level 1 events	53387	52332	62036	77691	56956
rejected events	46613	44536	53563	52549	50375
rejected %	87%	85%	86%	67%	88%

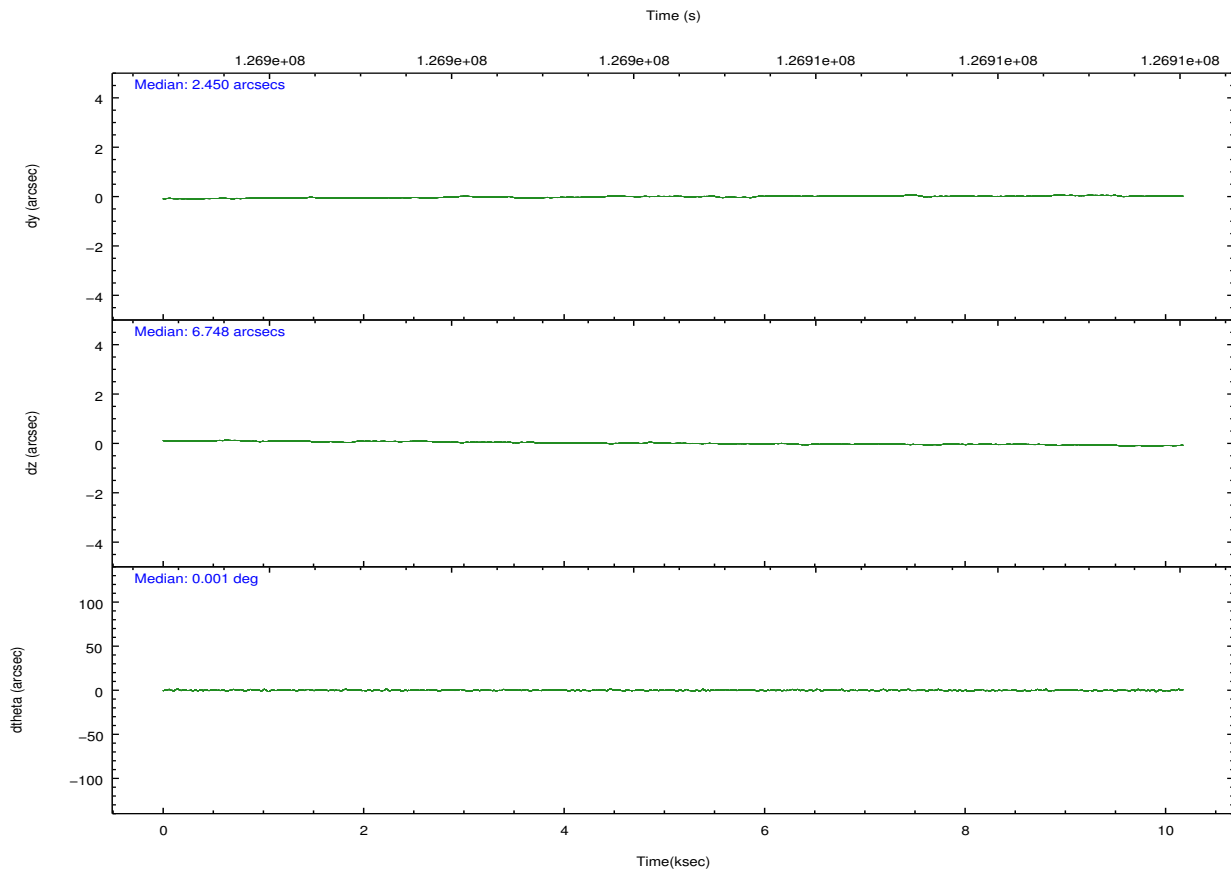
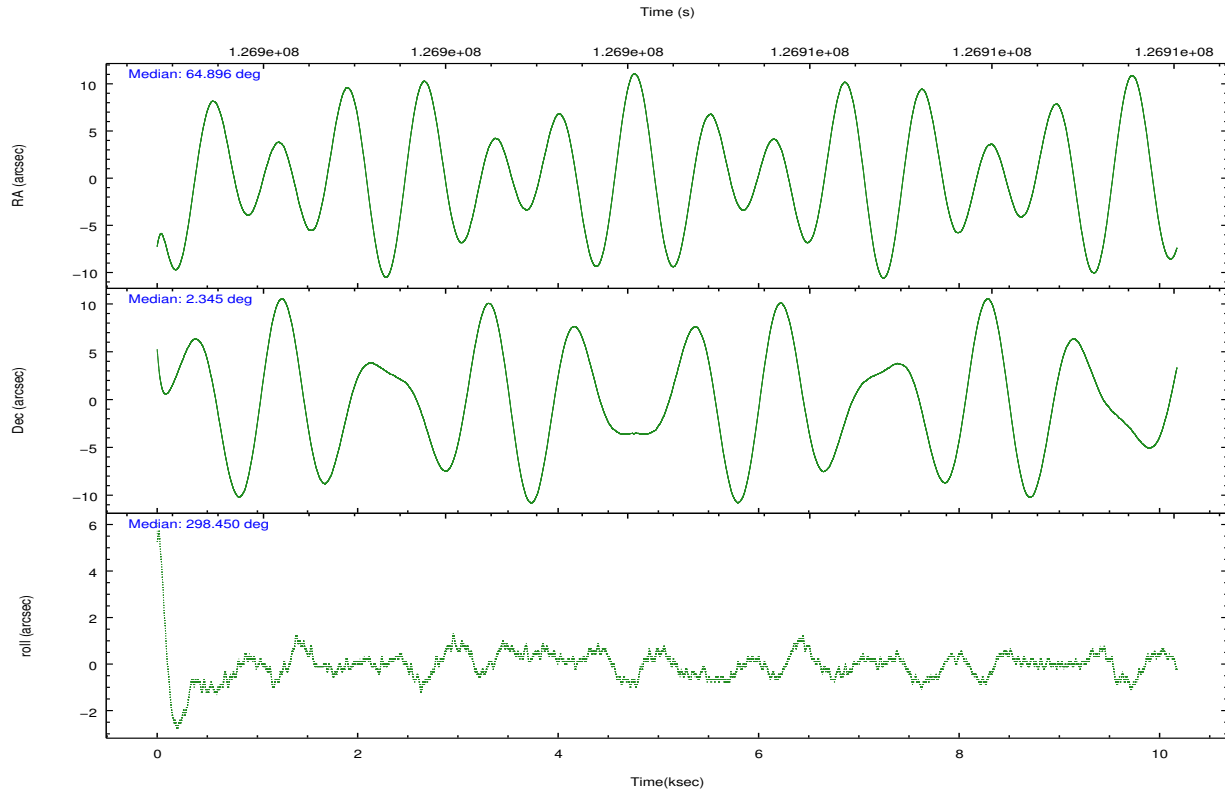
	ccd 0	ccd 1	ccd 2	ccd 3	ccd 6
grade 0 events	2988	3744	4510	18940	2777
	5%	7%	7%	24%	4%
grade 1 events	25	30	40	98	41
	0%	0%	0%	0%	0%
grade 2 events	1391	1425	1552	2816	1258
	2%	2%	2%	3%	2%
grade 3 events	702	737	658	1018	681
	1%	1%	1%	1%	1%
grade 4 events	611	683	691	1030	641
	1%	1%	1%	1%	1%
grade 5 events	1812	1924	1573	2069	2011
	3%	3%	2%	2%	3%
grade 6 events	1085	1212	1068	1357	1225
	2%	2%	1%	1%	2%
grade 7 events	44773	42577	51944	50363	48322
	83%	81%	83%	64%	84%

## 2.2 Compared Parameters

Parameter	Planned	Actual	Parameter	Planned	Actual
Instrument	ACIS	ACIS	Obspar format version number	7	7
Detector	ACIS-01236	ACIS-01236	Obspar file type	PREDICTED	ACTUAL
Grating	NONE	NONE	Obspar update status	NONE	UPDATED
Data mode	VFAINT	VFAINT	Number of optional ACIS chips dropped	0	0
Observation mode	POINTING	POINTING	On-chip summing requested	N	N
[deg] Pointing RA	64.872812	64.8947450099971	Subarray requested	NONE	NONE
[deg] Pointing Dec	2.359475	2.343349437038803	Alternating exposures requested	N	N
[deg] Pointing Roll	298.251974	298.4610420355391	[s] Primary exposure time	0.000000	3.1
[mm] SIM focus pos	-0.782348	-0.7809083437167272			
[mm] SIM defocus	0	0.001439871863259334			
[mm] SIM translation stage pos	-226.592463	-226.5900949765872			
[mm] SIM translation stage offset	-7	-7.002358026342478			
[s] Observation start time (MET)	126899517.184000	126898553.08869			
Observation start date	2002-01-08T17:50:53	2002-01-08T17:35:53			
[s] Observation end time (MET)	126909517.184000	126909650.76414			
Observation end date	2002-01-08T20:37:33	2002-01-08T20:40:50			
Read mode	TIMED	TIMED			

## 2.3 Aspect





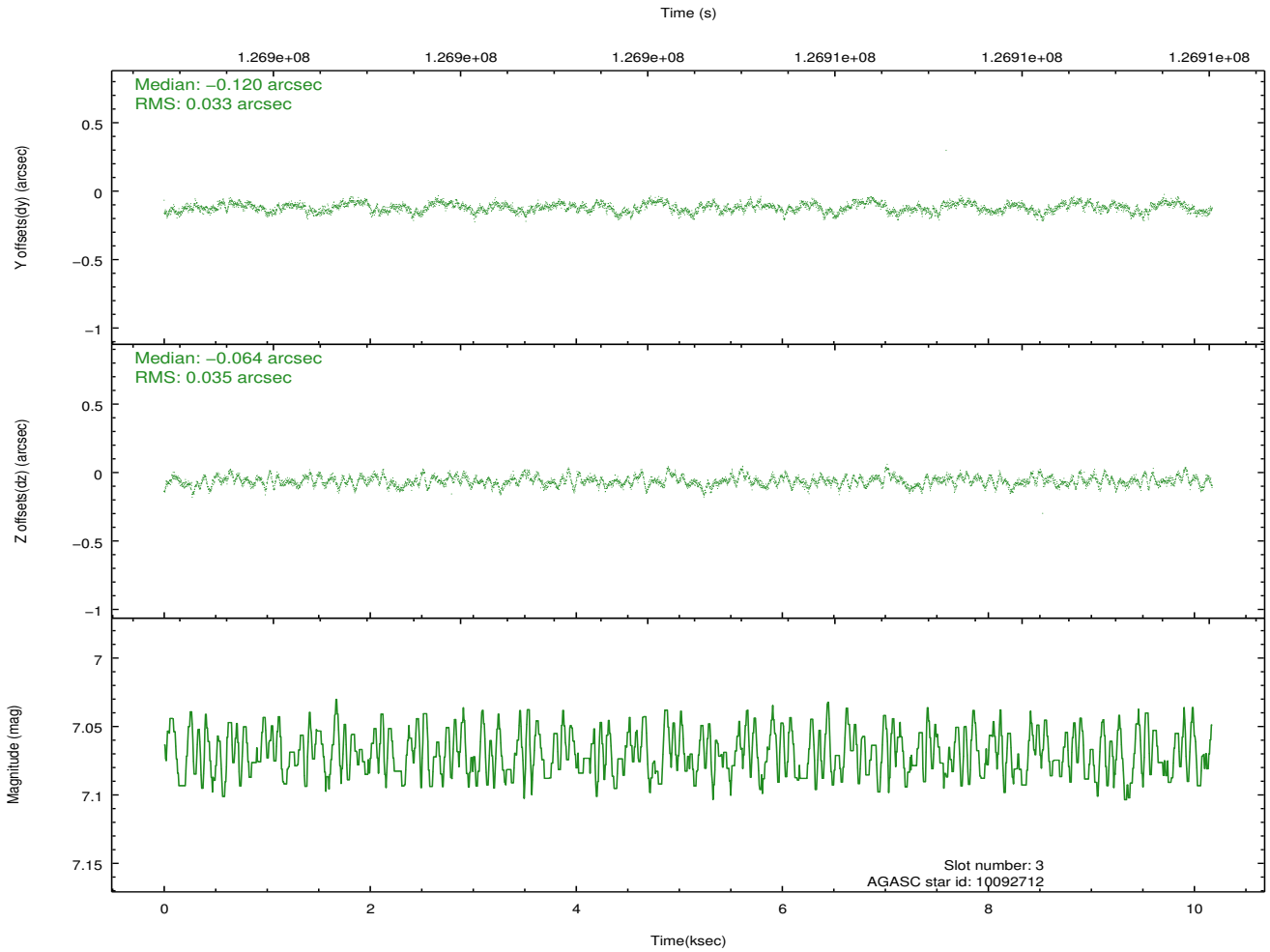
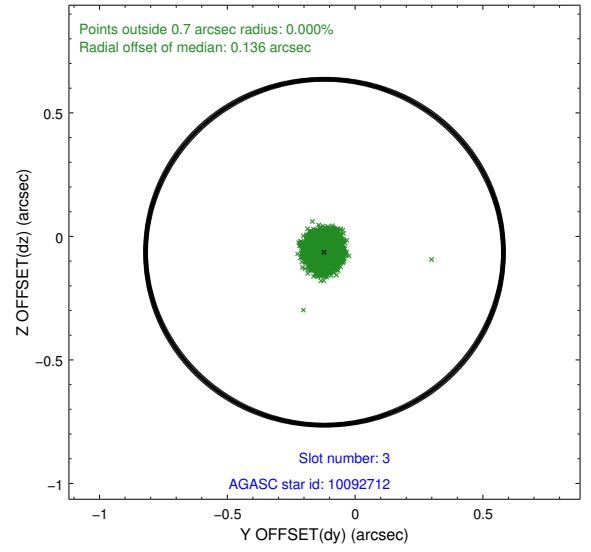
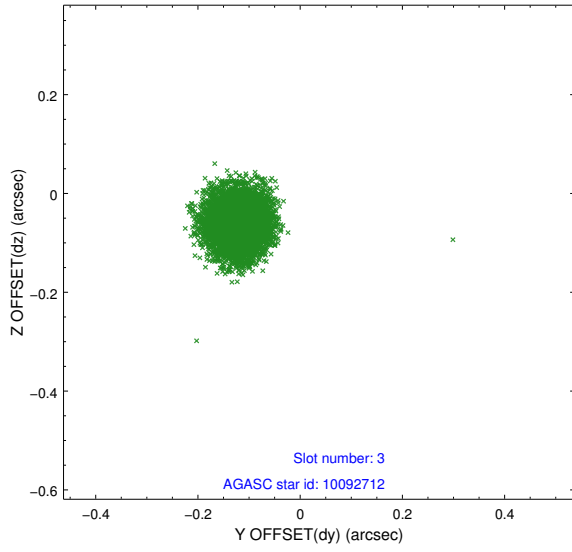
### Slot Statistics

slot	status	id	mag	n_pts	med_dy	med_dz	dr1	dr2	ra	dec	mean_y	mean_z
0	FID	ACIS-I-1	7.24	2480	0.047	-0.124	0.007	0.011	0.000000	0.000000	937.24	-974.05
1	FID	ACIS-I-3	7.43	2480	-0.043	0.244	0.007	0.011	0.000000	0.000000	54.94	-1107.26
2	FID	ACIS-I-6	7.26	2482	-0.093	-0.053	0.005	0.010	0.000000	0.000000	402.95	1567.50
3	GUIDE	10092712	7.07	4962	-0.120	-0.064	0.052	0.082	64.322459	2.529688	-1477.03	-1453.98
4	GUIDE	9830984	7.06	4959	0.028	0.061	0.058	0.091	65.442956	2.390106	872.82	1858.37
5	GUIDE	9703224	7.75	4962	0.063	0.014	0.056	0.093	64.728794	1.773459	1613.46	-1454.79
6	GUIDE	10093656	8.29	4961	-0.036	0.108	0.059	0.097	64.910383	2.992173	-1942.41	1196.41
7	GUIDE	9707240	8.74	4959	0.061	-0.118	0.066	0.106	64.375838	2.149421	-180.55	-1932.87

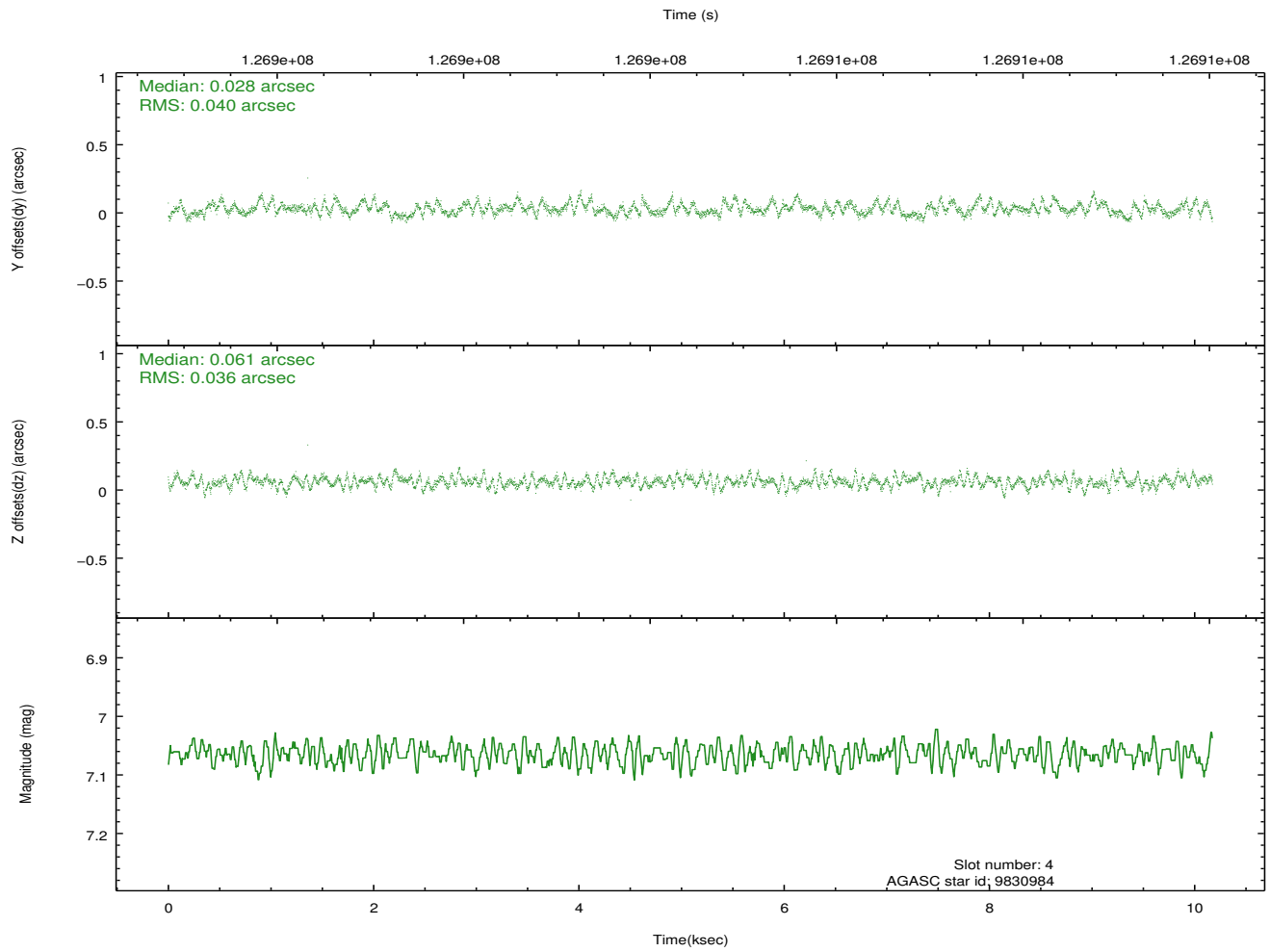
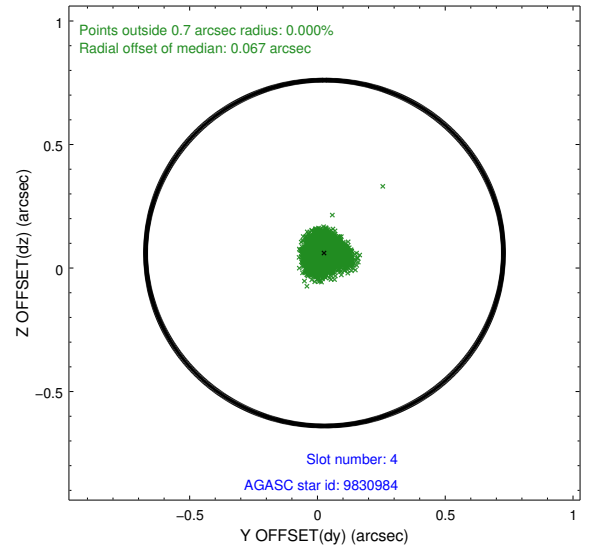
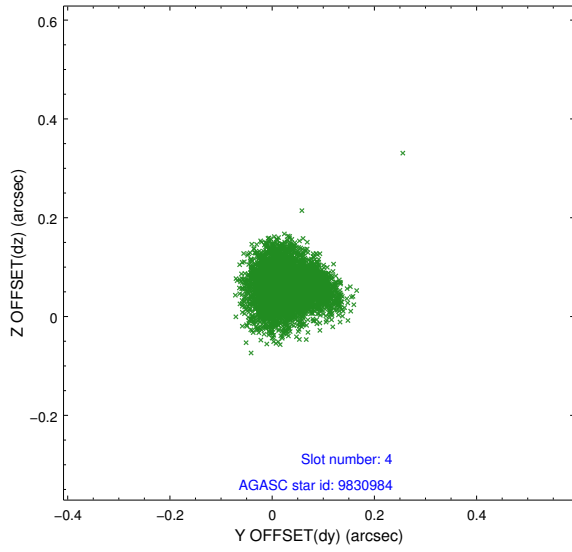
∞

## 2.4 Star Slots

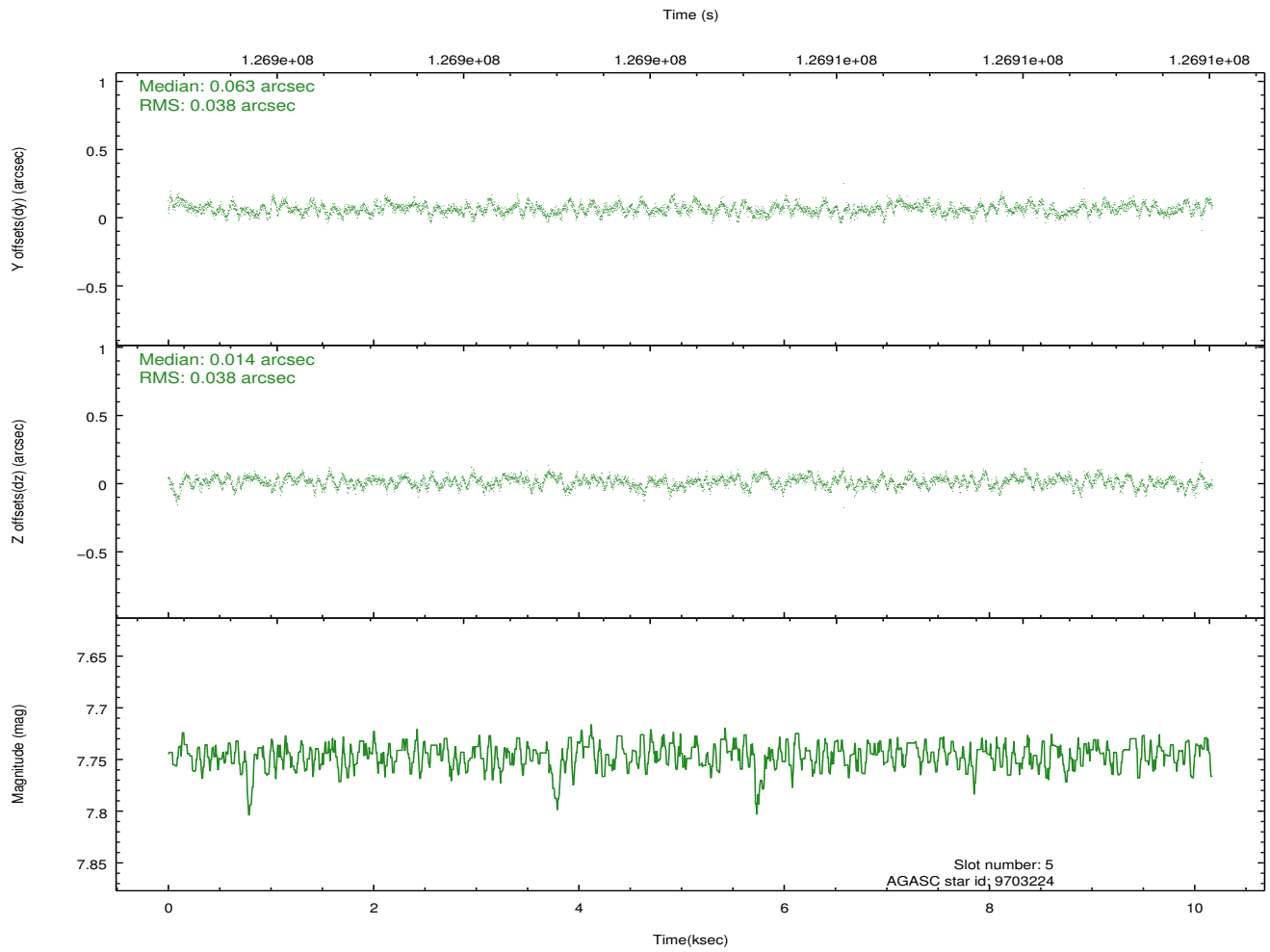
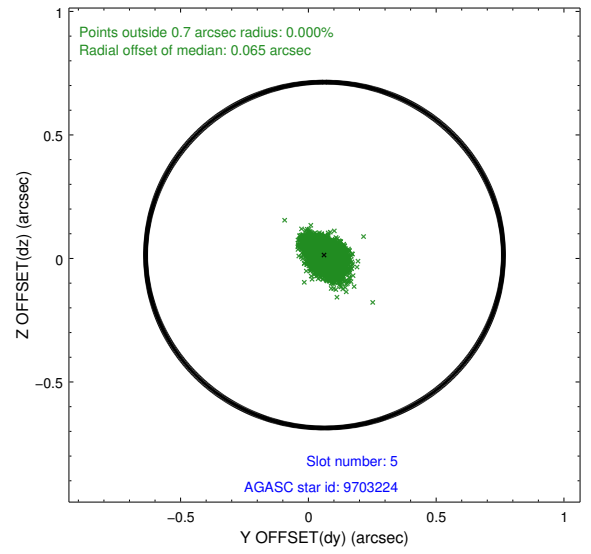
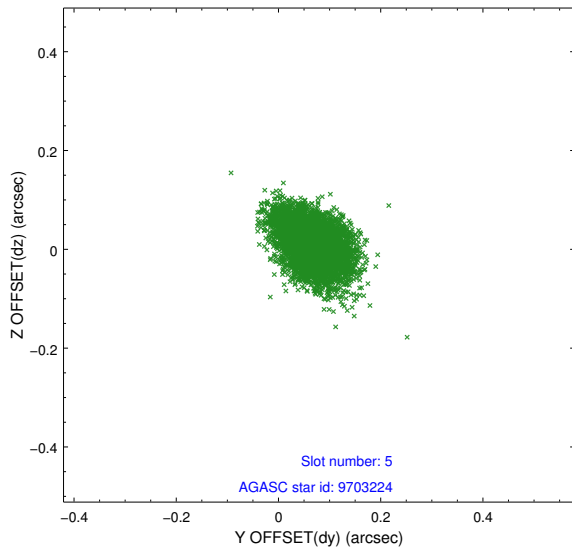
### 2.4.1 Slot 3



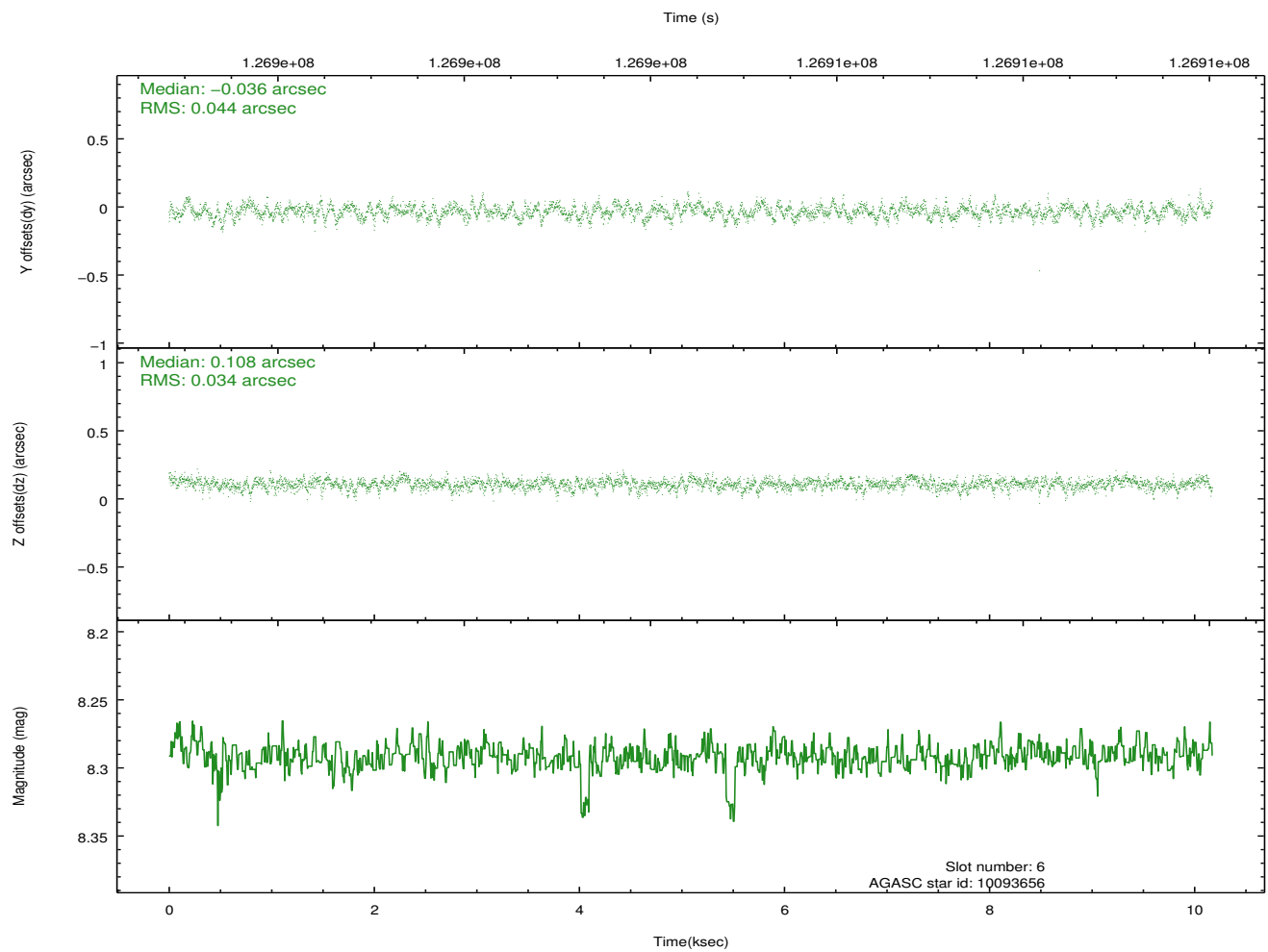
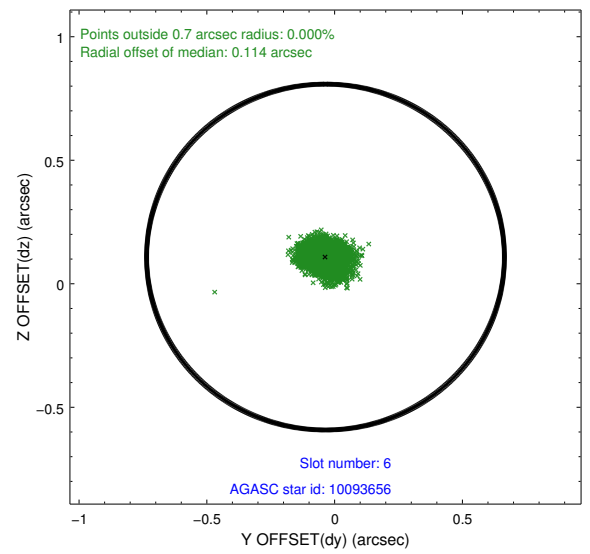
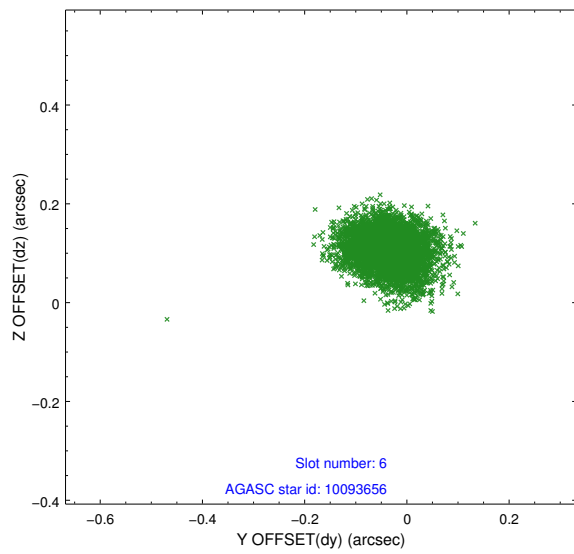
### 2.4.2 Slot 4



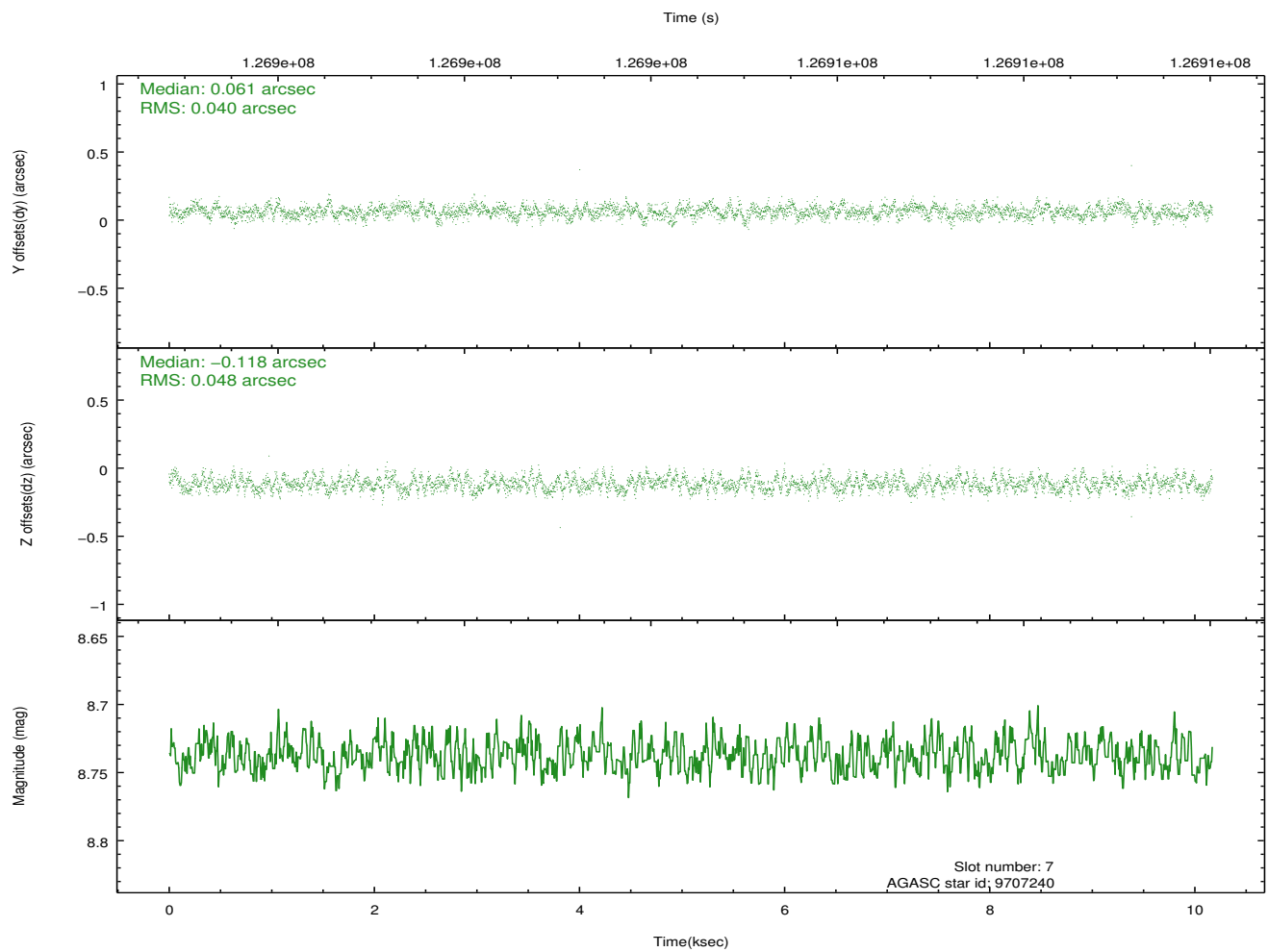
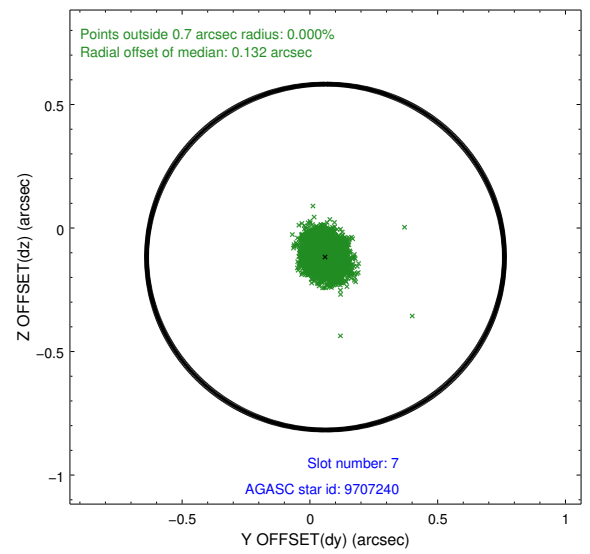
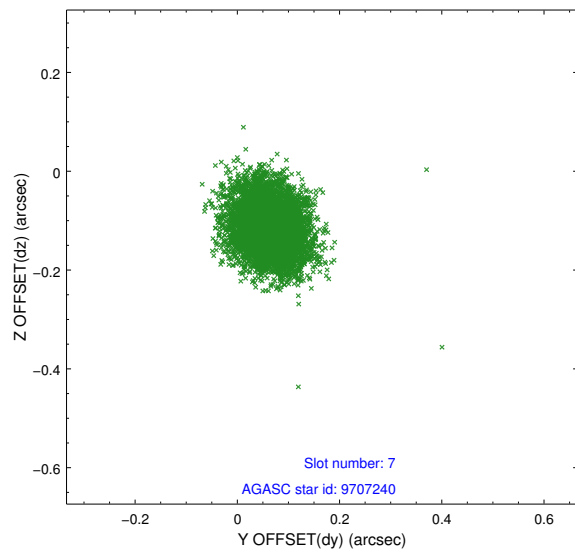
### 2.4.3 Slot 5



## 2.4.4 Slot 6

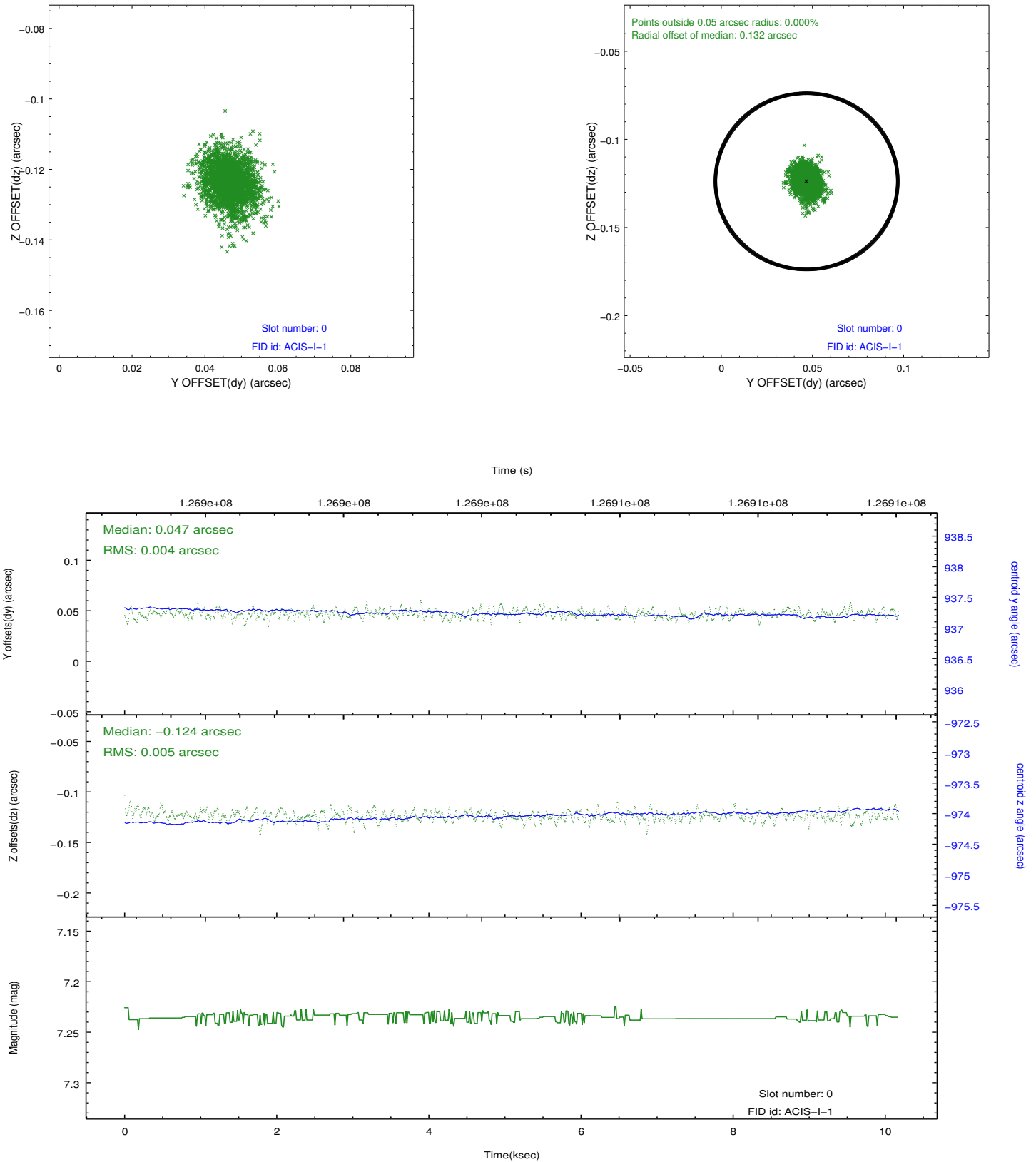


## 2.4.5 Slot 7

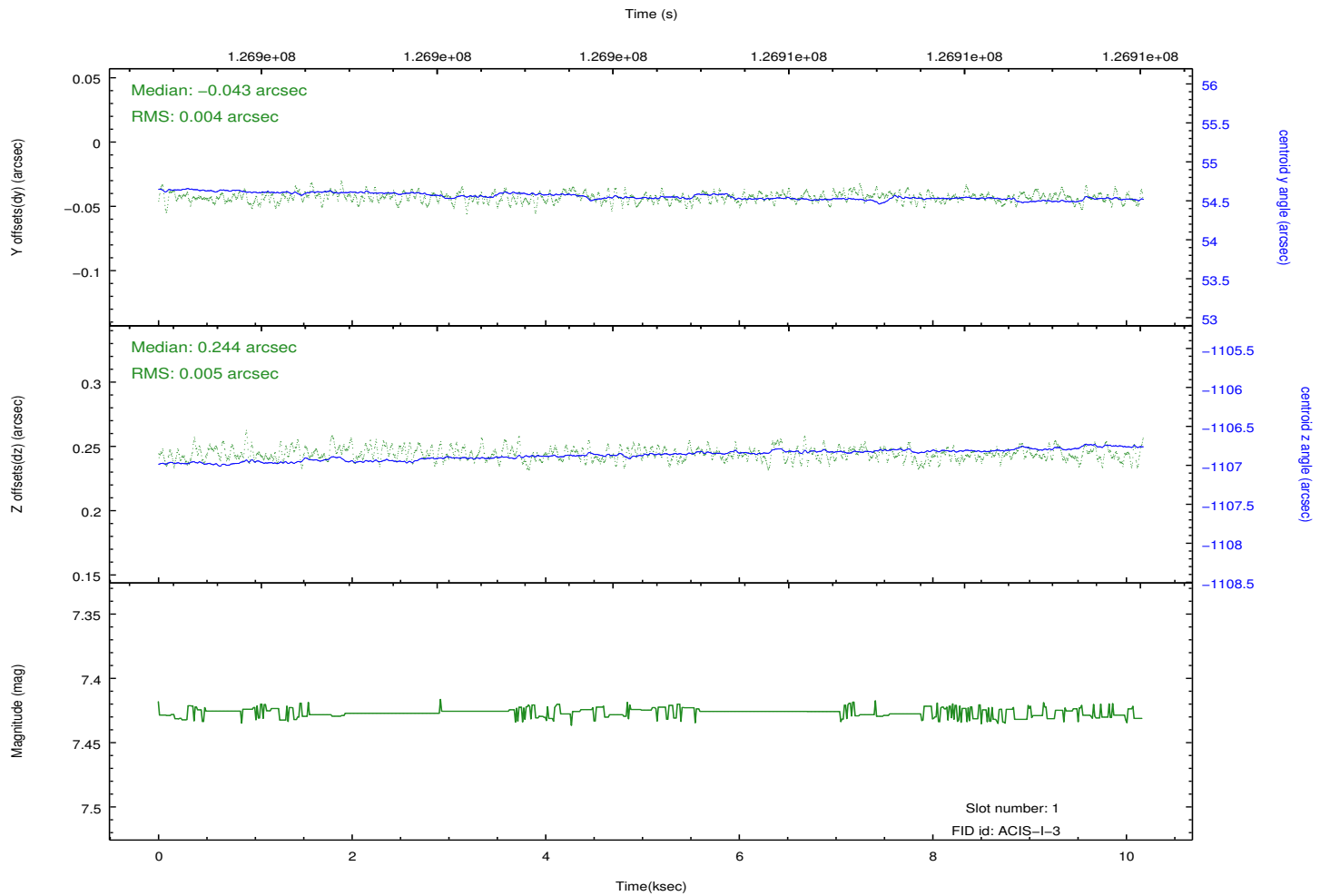
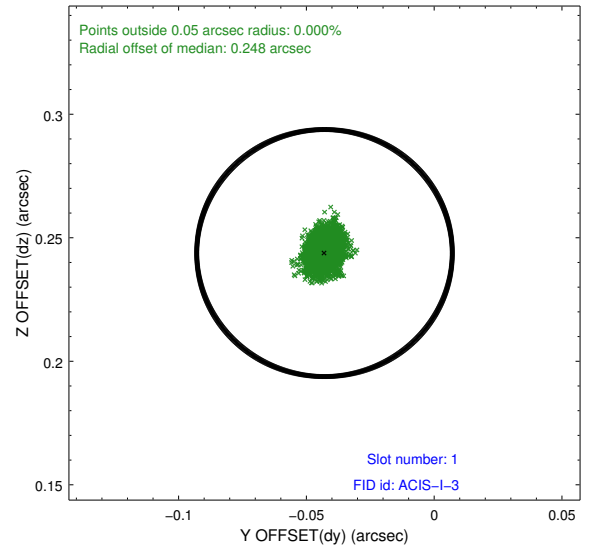
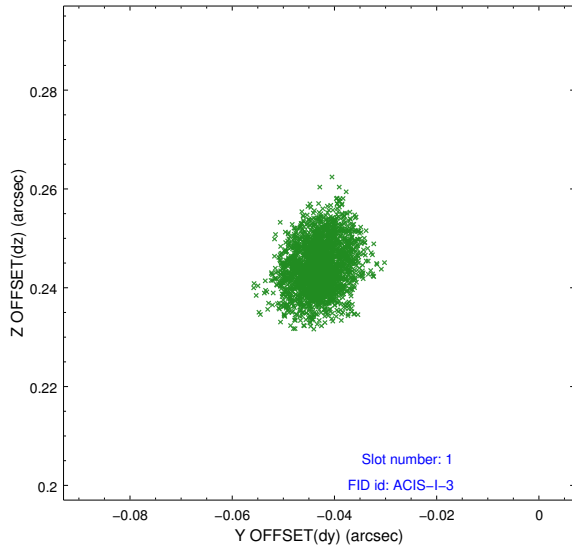


## 2.5 FID Slots

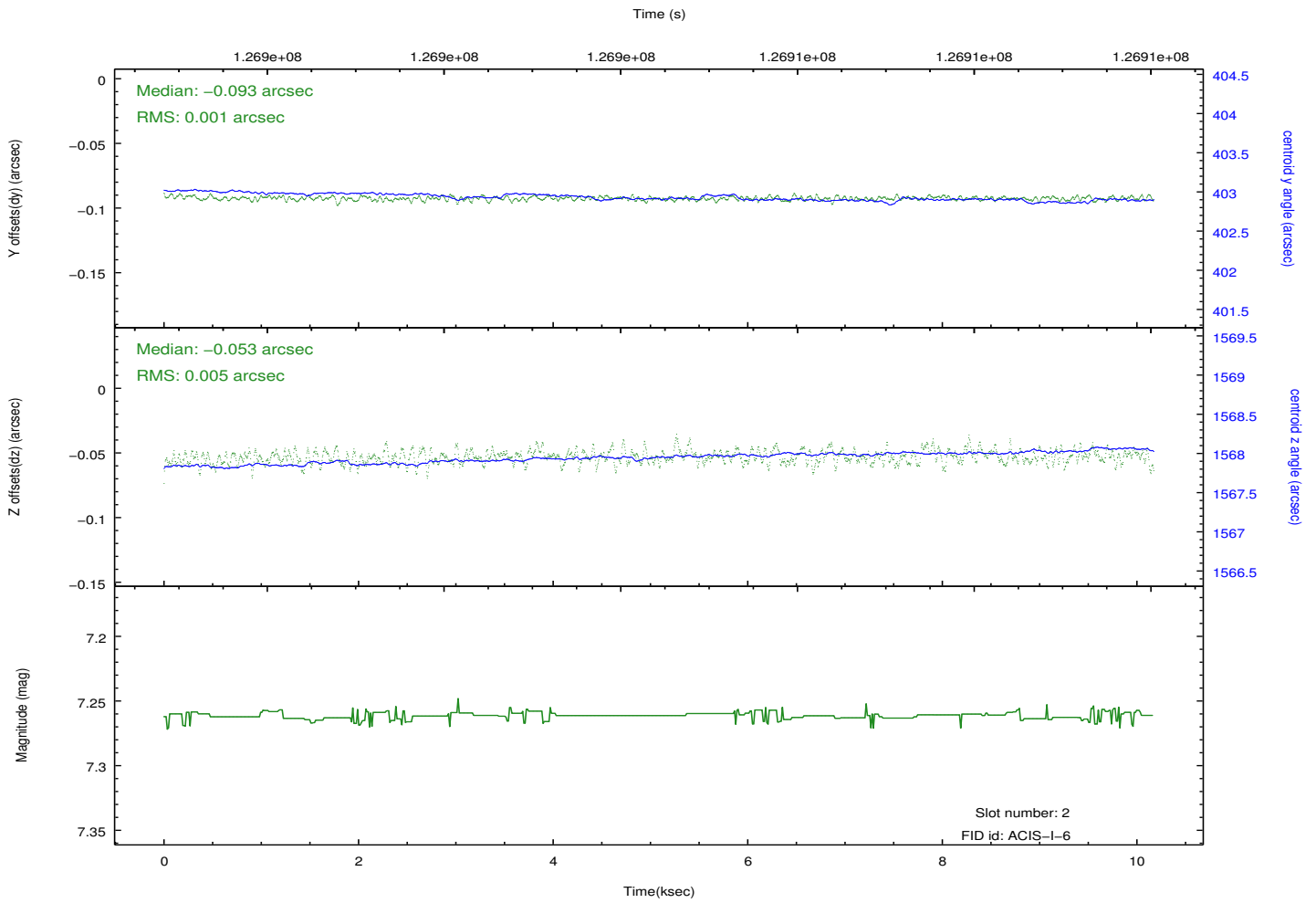
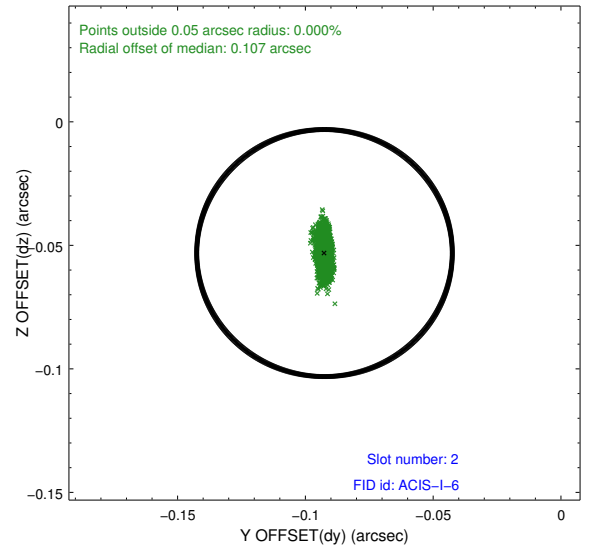
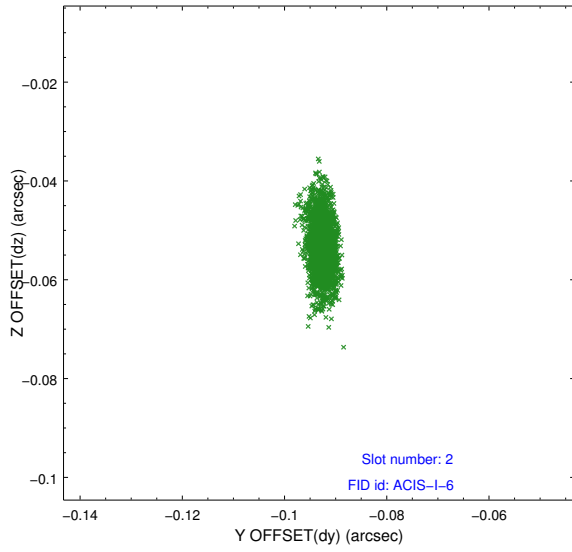
### 2.5.1 Slot 0



## 2.5.2 Slot 1



### 2.5.3 Slot 2



## A Summary

### A.1 Status

V&V Scientist	Jen Lauer
V&V Date (YYYY-MM-DD)	2012.10.02
V&V Edition	1
V&V Disposition and Status	OK
V&V Charge Time	10.115

### A.2 Comments