

V&V Reference Report

L2 ASCDS Version : 8.4.5

Observation 3196 - L2 Version 3
Chandra X-Ray Center

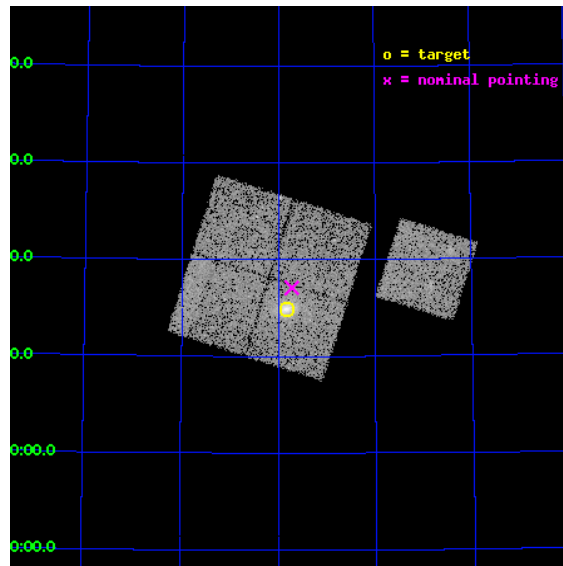
L2 Processing Date : Oct 17 2012

Contents

1	Front	2
2	OBI	3
2.1	OBI	3
2.1.1	Images	3
2.1.2	Bias	3
2.1.3	Parameters	4
2.1.4	Events	4
2.2	Compared Parameters	5
2.3	Aspect	6
2.4	Star Slots	9
2.4.1	Slot 3	9
2.4.2	Slot 4	10
2.4.3	Slot 5	11
2.4.4	Slot 6	12
2.4.5	Slot 7	13
2.5	FID Slots	14
2.5.1	Slot 0	14
2.5.2	Slot 1	15
2.5.3	Slot 2	16
A	Summary	17
A.1	Status	17
A.2	Comments	17

1 Front

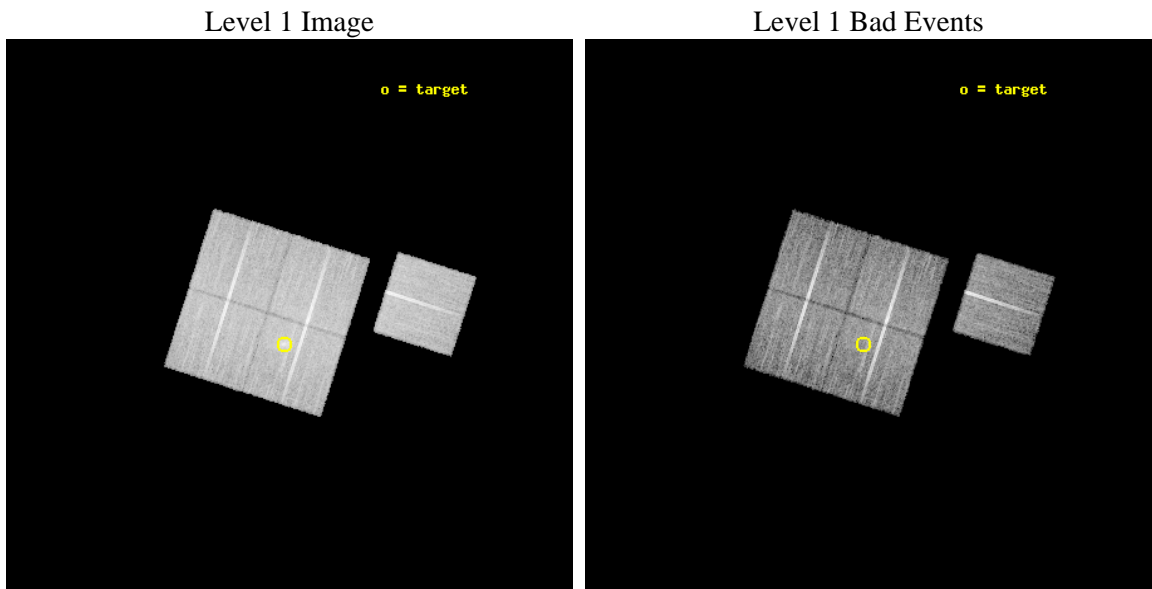
seq_num	800196	Sequence number
obs_id	3196	Observation id
title	OBSERVATION OF MACS CLUSTERS, Z>0.5	Proposal title
observer	DR. LEON VANSPEYBROECK	Principal investigator
object	MACS-J0647.7+7015	Source name
dtycycle	0	
cycle	P	events from which exps? Prim/Second/Both
ra_targ	101.959167	Observer's specified target RA [deg]
dec_targ	70.248611	Observer's specified target Dec [deg]
ra_nom	101.93075772714	Nominal RA [deg]
dec_nom	70.285055123064	Nominal Dec [deg]
roll_nom	107.66504201331	Nominal Roll [deg]
revision	3	Processing version of data
ontime	19529.999962419	Sum of GTIs [s]
livetime	19274.826135133	Livetime [s]
ontime0	19529.999962419	Sum of GTIs [s]
ontime1	19529.999962419	Sum of GTIs [s]
ontime2	19526.858972281	Sum of GTIs [s]
ontime3	19529.999962419	Sum of GTIs [s]
ontime6	19526.858972281	Sum of GTIs [s]
l2events	48086	Number of level 2 events



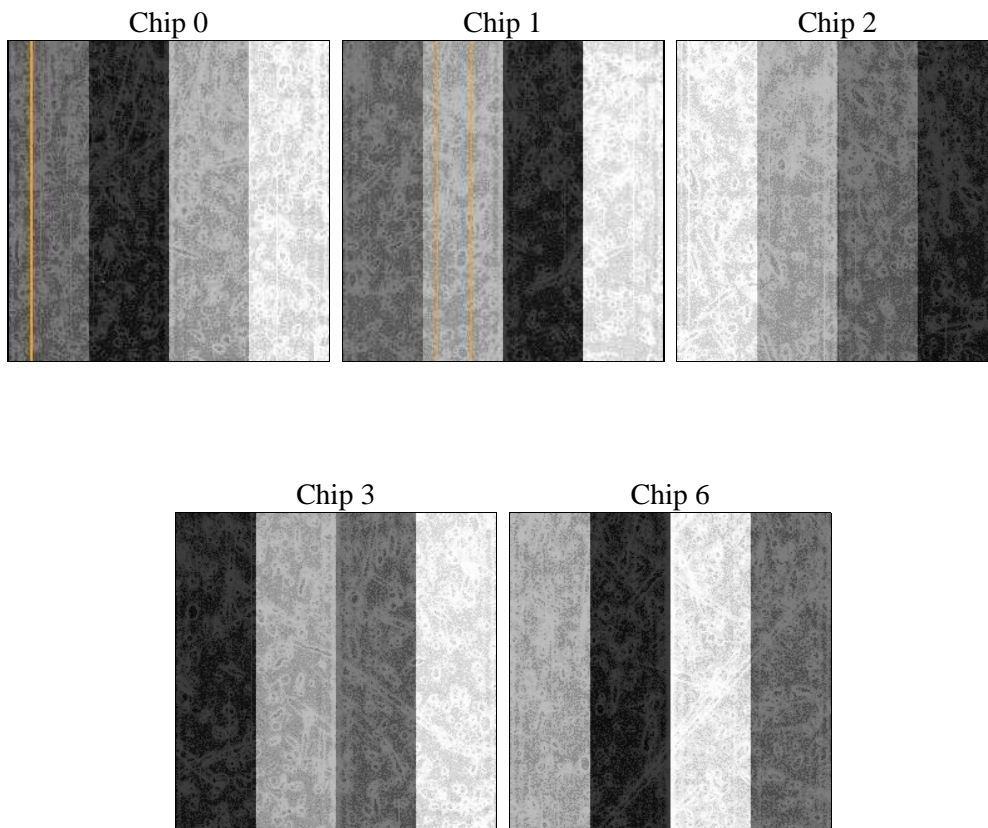
2 OBI

2.1 OBI

2.1.1 Images



2.1.2 Bias



2.1.3 Parameters

obi_num	1	Obi number	sched_exp_time	19500.000000	[s] Scheduled observation exposure time
ascdsver	8.4.5	Processing system revision	ontime	19529.999962419	Sum of GTIs [s]
caldbver	4.5.2	 	ontime0	19529.999962419	Sum of GTIs [s]
date	2012-10-17T00:12:01	Date and time of file creation	ontime1	19529.999962419	Sum of GTIs [s]
revision	3	Processing version of data	ontime2	19526.858972281	Sum of GTIs [s]
			ontime3	19529.999962419	Sum of GTIs [s]
			ontime6	19526.858972281	Sum of GTIs [s]
			l1events	532884	Number of level 1 events

2.1.4 Events

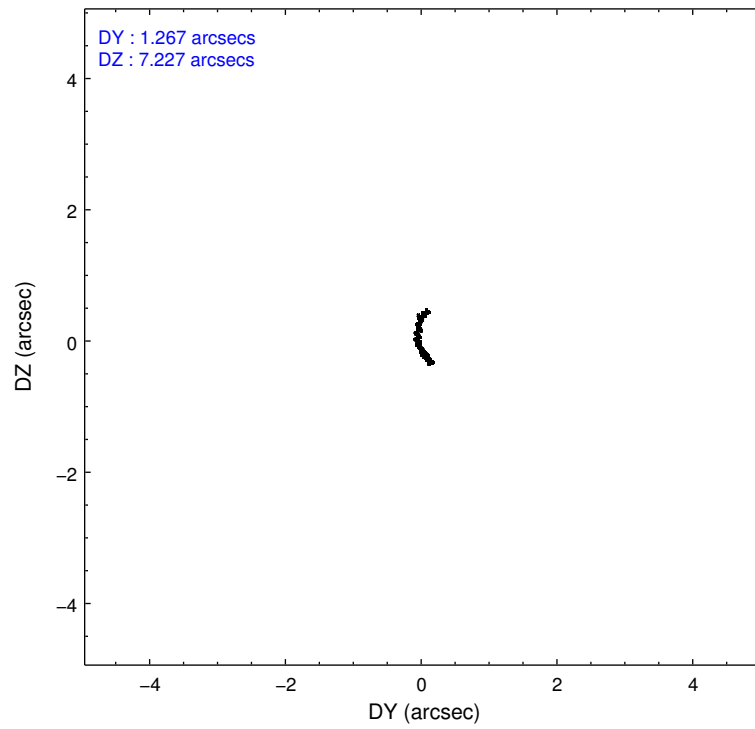
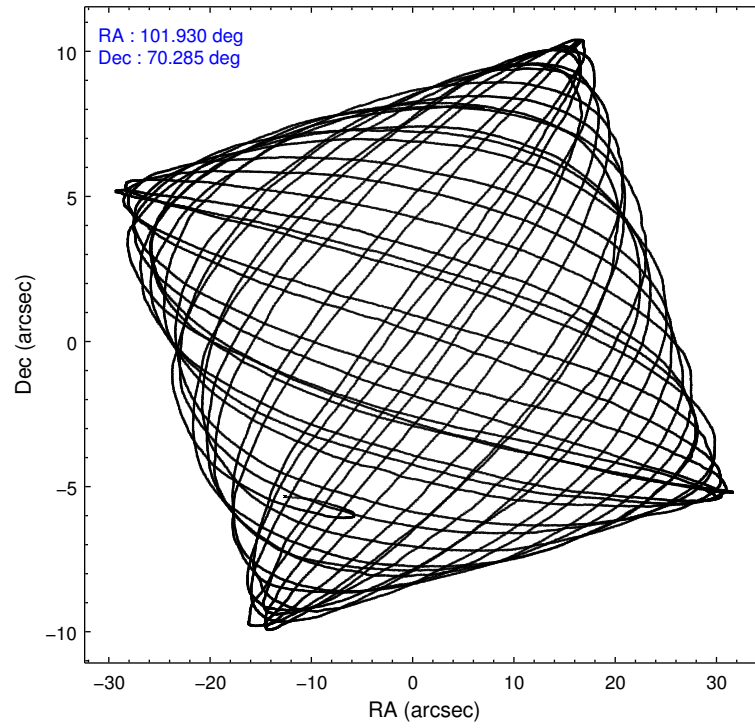
	ccd 0	ccd 1	ccd 2	ccd 3	ccd 6
level 1 events	99271	105211	111881	109199	107322
rejected events	88763	93247	101622	95610	96157
rejected %	89%	88%	90%	87%	89%

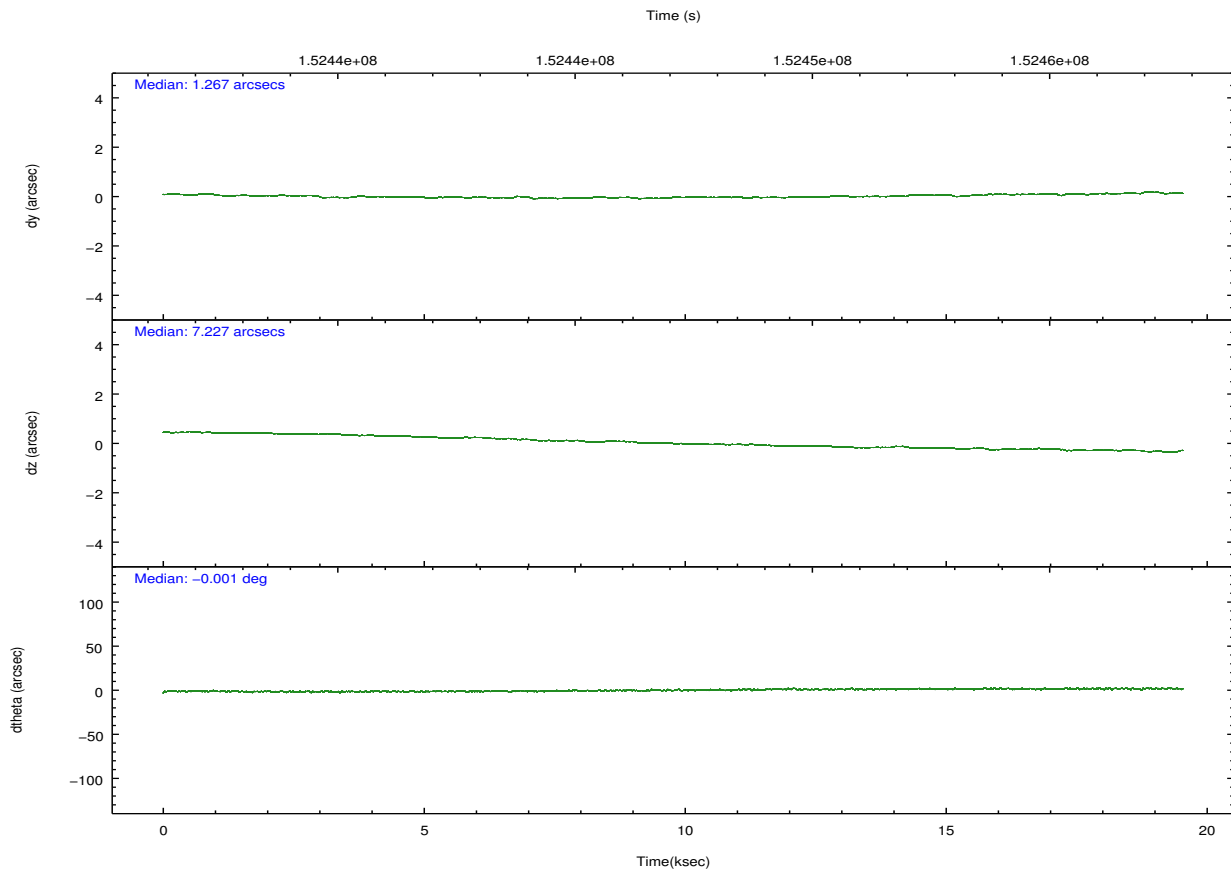
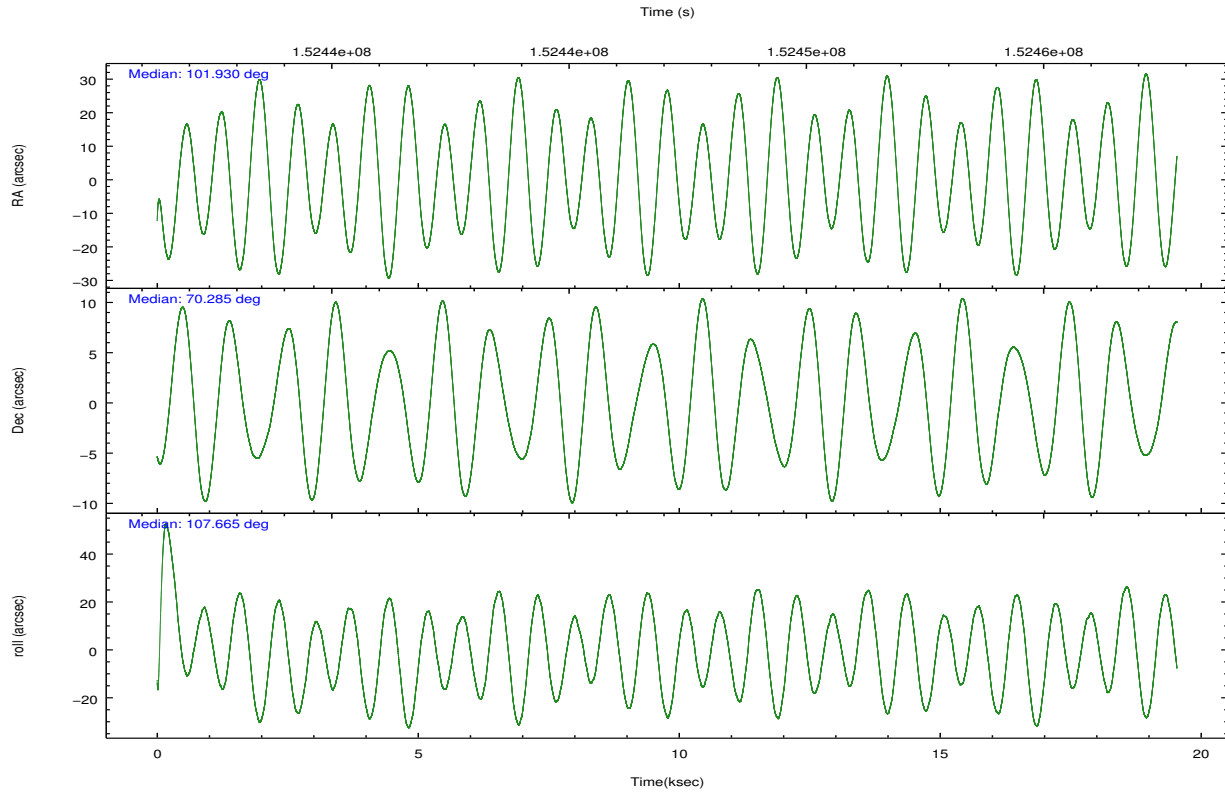
	ccd 0	ccd 1	ccd 2	ccd 3	ccd 6
grade 0 events	3759	4476	3838	6791	4256
	3%	4%	3%	6%	3%
grade 1 events	59	55	58	61	44
	0%	0%	0%	0%	0%
grade 2 events	2455	2577	2335	2518	2318
	2%	2%	2%	2%	2%
grade 3 events	1338	1412	1185	1239	1274
	1%	1%	1%	1%	1%
grade 4 events	1137	1353	1174	1249	1274
	1%	1%	1%	1%	1%
grade 5 events	3637	3926	3465	3994	3955
	3%	3%	3%	3%	3%
grade 6 events	2069	2431	1951	2094	2323
	2%	2%	1%	1%	2%
grade 7 events	84817	88981	97875	91253	91878
	85%	84%	87%	83%	85%

2.2 Compared Parameters

Parameter	Planned	Actual	Parameter	Planned	Actual
Instrument	ACIS	ACIS	Obspar format version number	7	7
Detector	ACIS-01236	ACIS-01236	Obspar file type	PREDICTED	ACTUAL
Grating	NONE	NONE	Obspar update status	NONE	UPDATED
Data mode	VFAINT	VFAINT	Number of optional ACIS chips dropped	0	0
Observation mode	POINTING	POINTING	On-chip summing requested	N	N
[deg] Pointing RA	101.991013	101.9307577271447	Subarray requested	NONE	NONE
[deg] Pointing Dec	70.266666	70.2850551230635	Alternating exposures requested	N	N
[deg] Pointing Roll	107.399679	107.6650420133134	[s] Primary exposure time	0.000000	3.1
[mm] SIM focus pos	-0.782348	-0.7809083437167272			
[mm] SIM defocus	0	0.001439871863259334			
[mm] SIM translation stage pos	-227.742463	-227.734108438797			
[mm] SIM translation stage offset	-5.85	-5.858344564132665			
[s] Observation start time (MET)	152437331.184000	152436232.33263			
Observation start date	2002-10-31T07:41:07	2002-10-31T07:23:52			
[s] Observation end time (MET)	152456831.184000	152457605.12102			
Observation end date	2002-10-31T13:06:07	2002-10-31T13:20:05			
Read mode	TIMED	TIMED			

2.3 Aspect



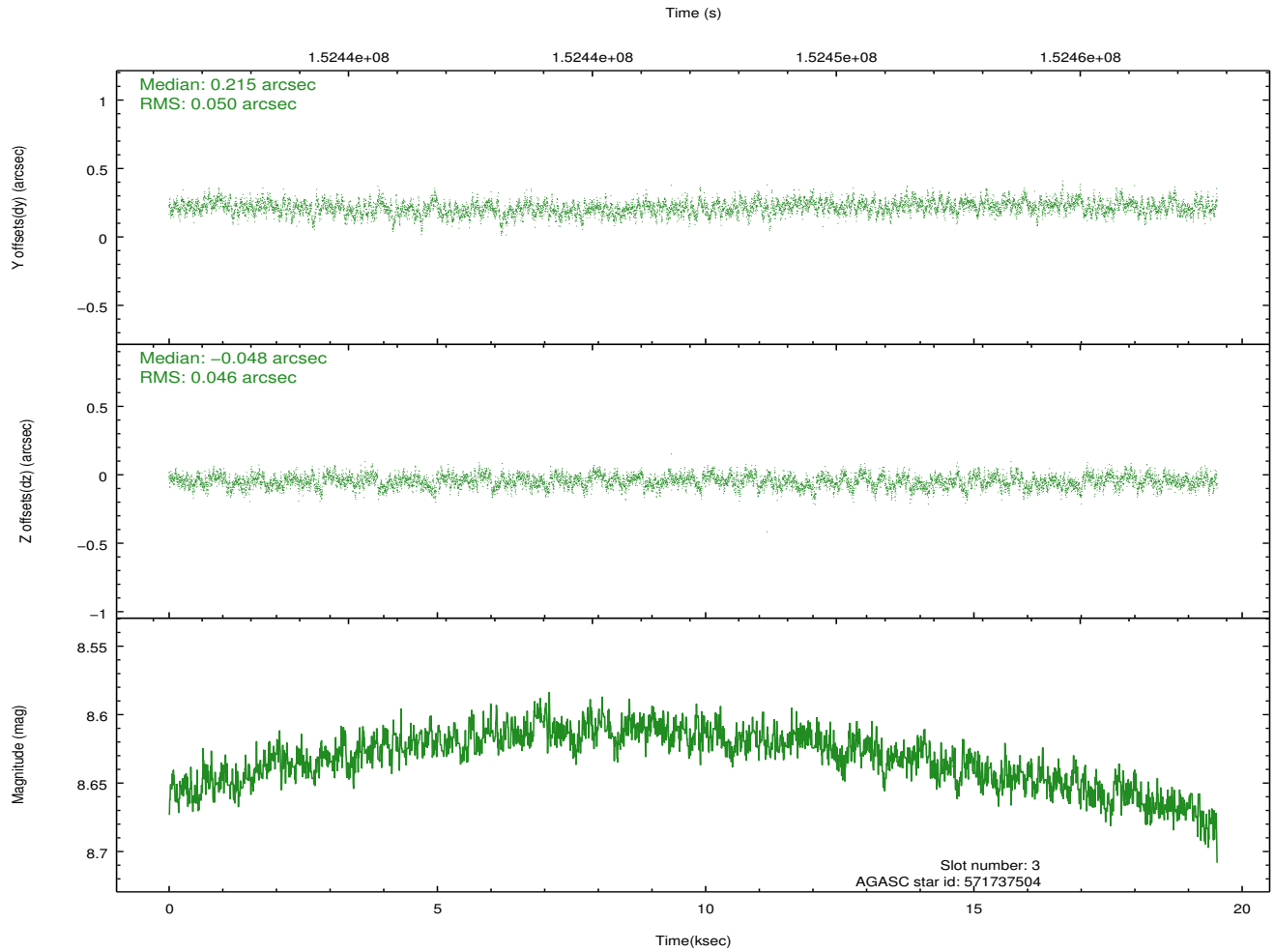
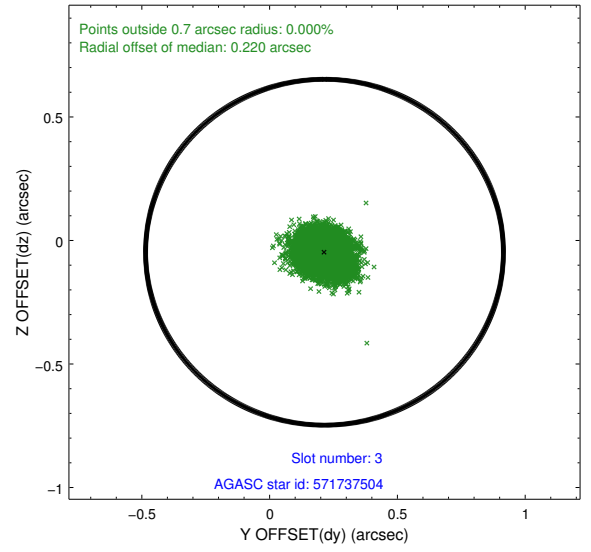
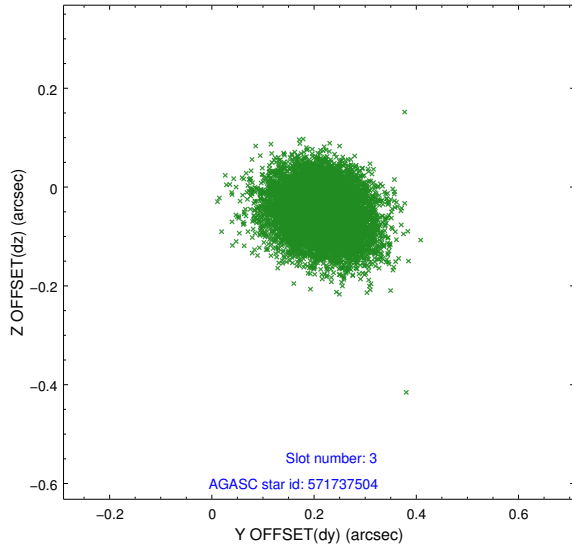


Slot Statistics

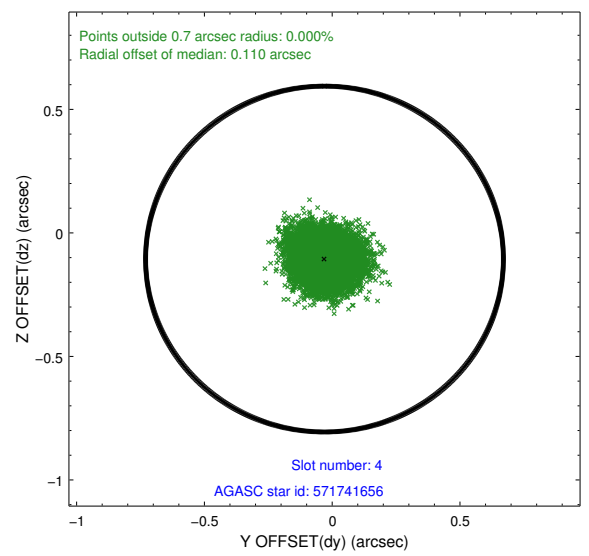
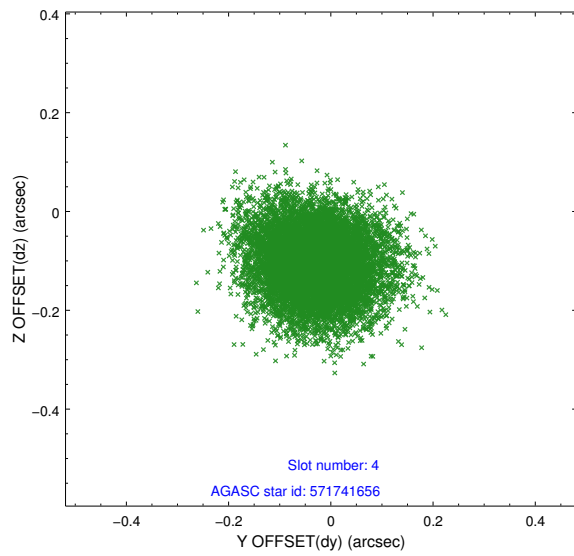
slot	status	id	mag	n_pts	med_dy	med_dz	dr1	dr2	ra	dec	mean_y	mean_z
0	FID	ACIS-I-1	7.24	4766	0.050	0.012	0.010	0.024	0.000000	0.000000	938.48	-950.91
1	FID	ACIS-I-5	7.23	4765	-0.152	0.077	0.016	0.023	0.000000	0.000000	-1809.69	946.56
2	FID	ACIS-I-6	7.26	4766	0.017	-0.017	0.016	0.025	0.000000	0.000000	403.82	1591.16
3	GUIDE	571737504	8.63	9531	0.215	-0.048	0.071	0.118	101.870026	69.629105	-2143.15	830.21
4	GUIDE	571741656	9.56	9530	-0.030	-0.106	0.094	0.156	101.249678	70.681487	1695.24	393.59
5	GUIDE	571744808	9.50	9525	-0.198	0.032	0.092	0.149	101.336434	70.800066	2069.44	163.36
6	GUIDE	571742056	9.82	9525	-0.206	0.001	0.132	0.207	100.911558	70.764042	2103.69	682.12
7	GUIDE	571878656	9.42	9514	0.217	0.116	0.099	0.161	103.474687	69.749452	-2306.32	-1214.55

2.4 Star Slots

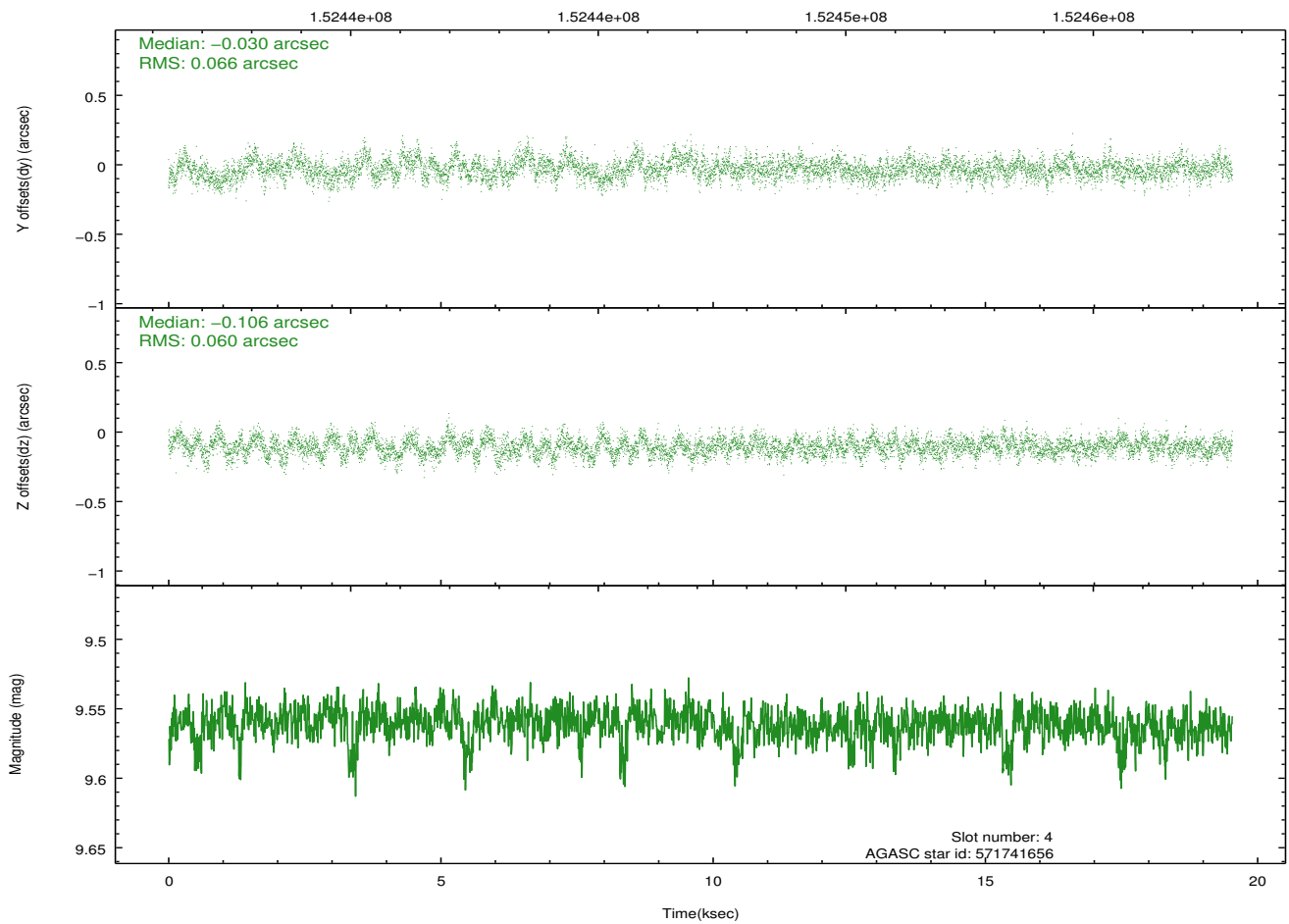
2.4.1 Slot 3



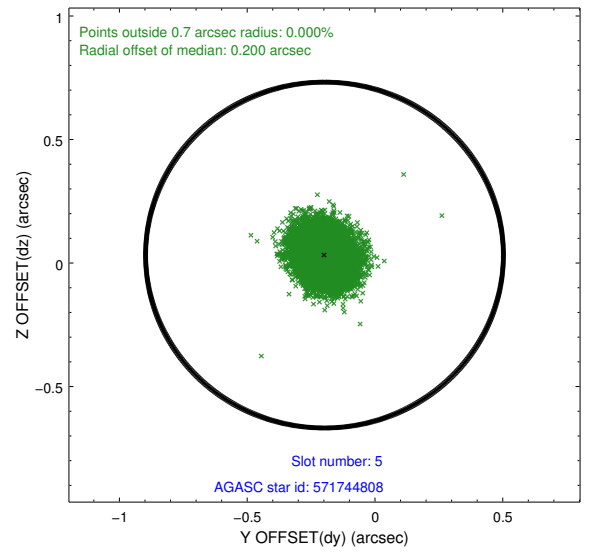
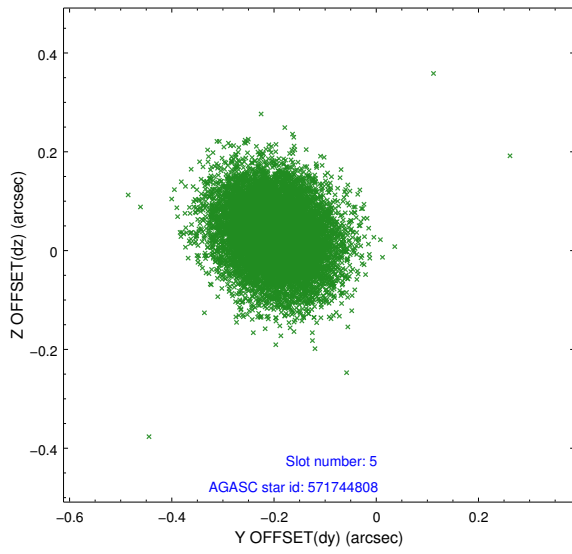
2.4.2 Slot 4



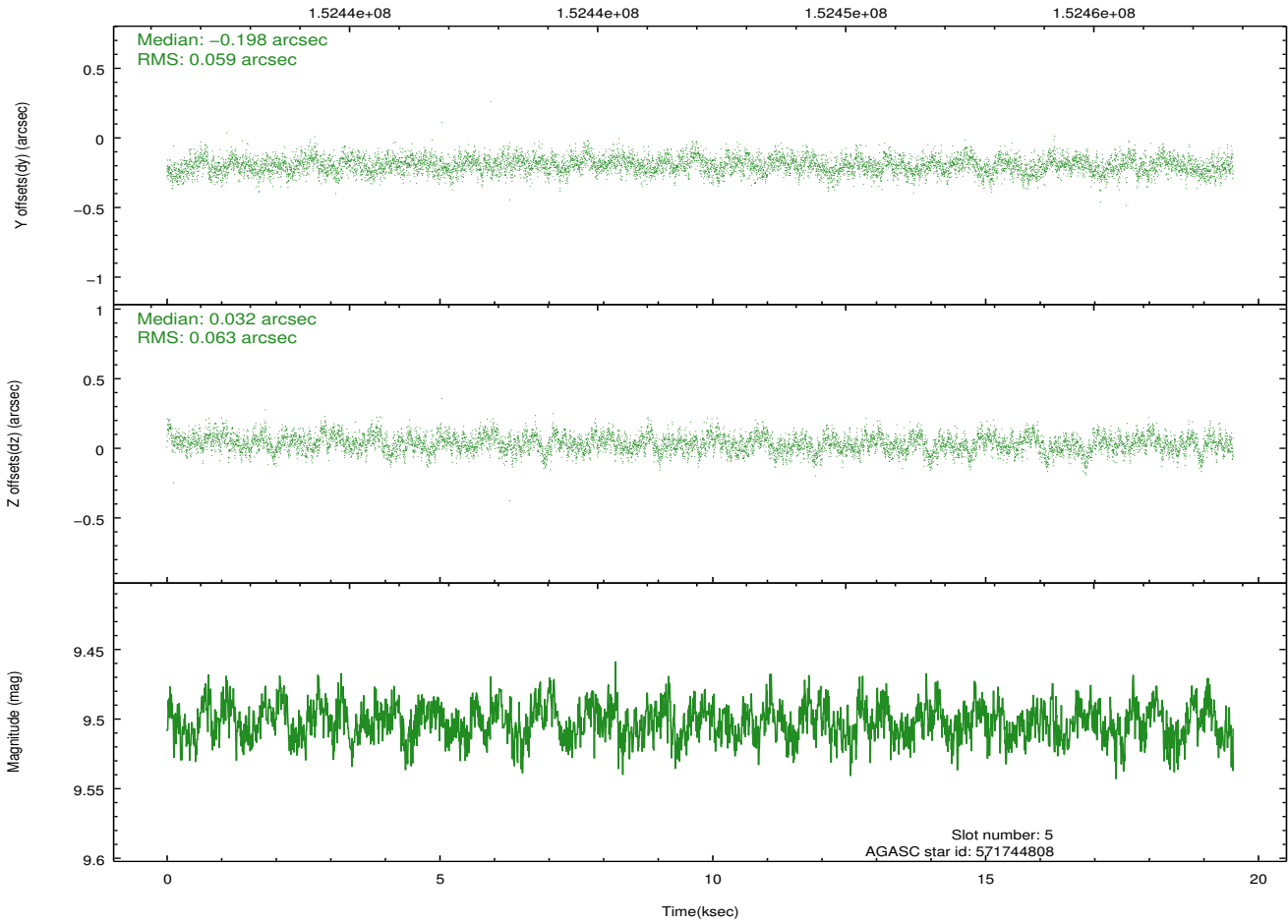
Time (s)



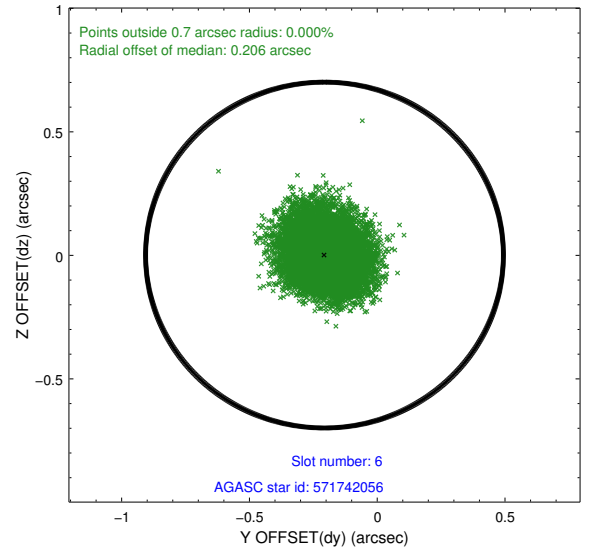
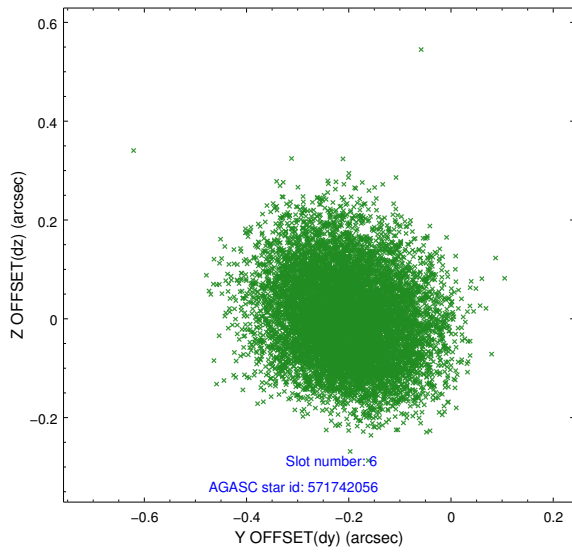
2.4.3 Slot 5



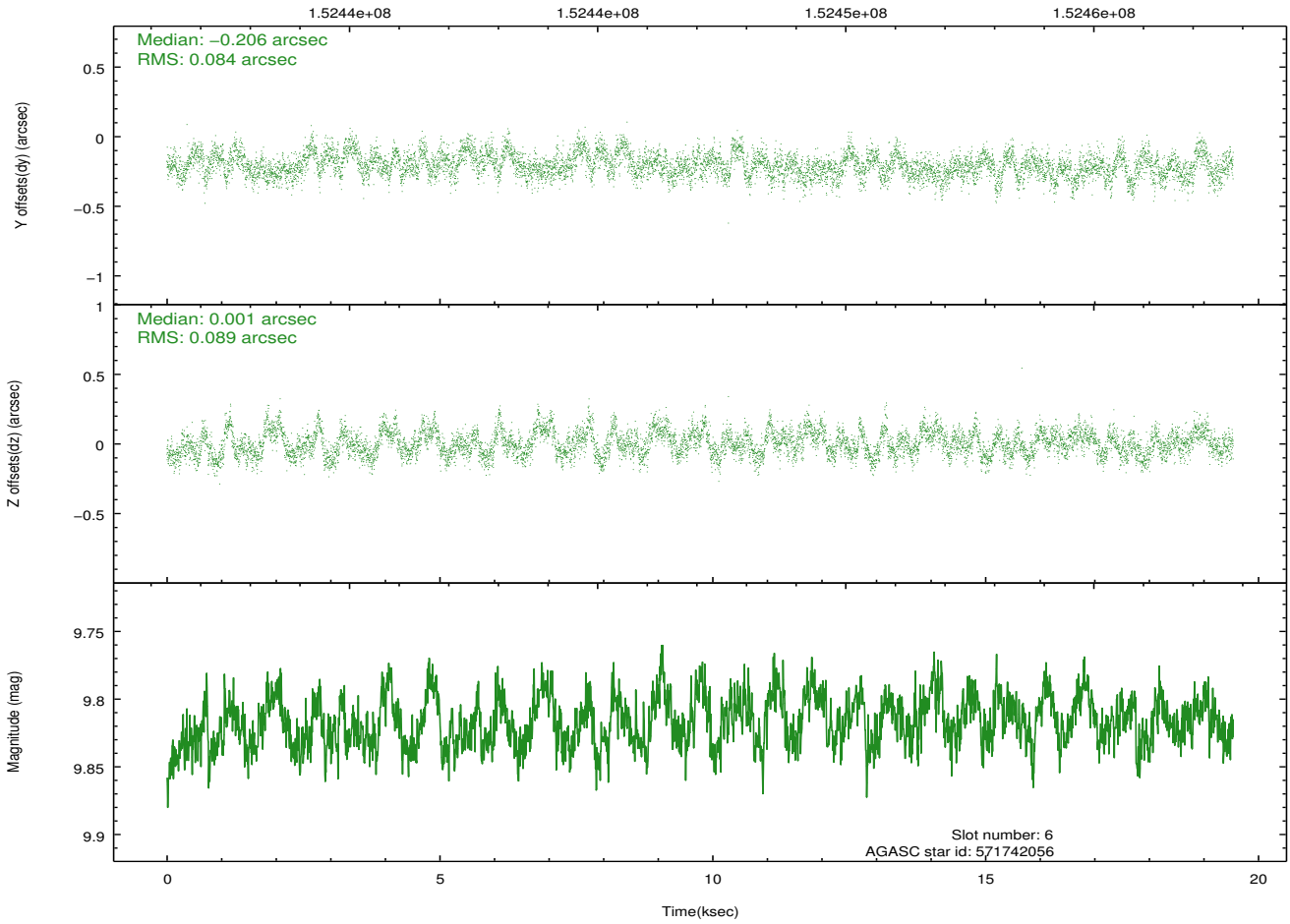
Time (s)



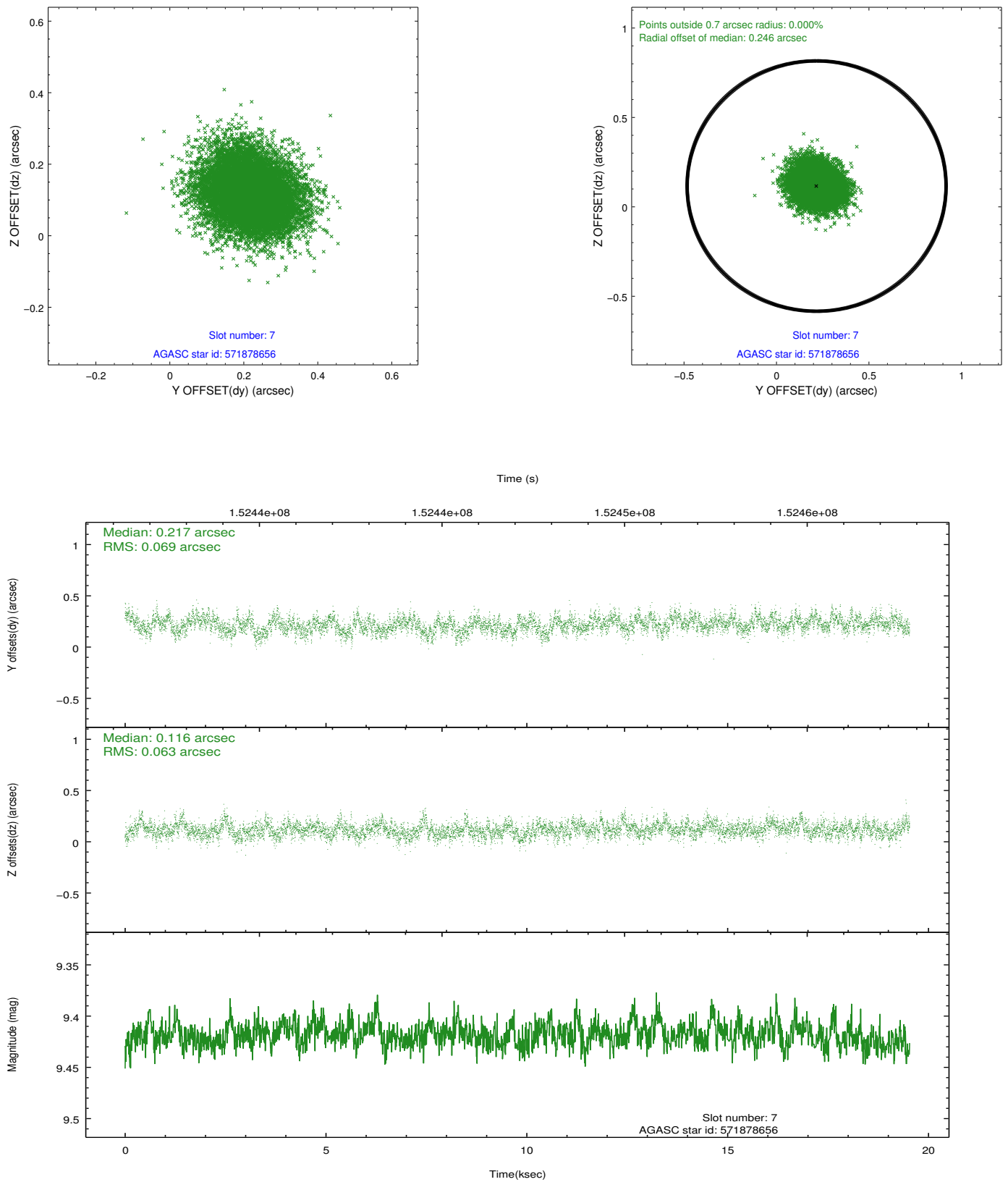
2.4.4 Slot 6



Time (s)

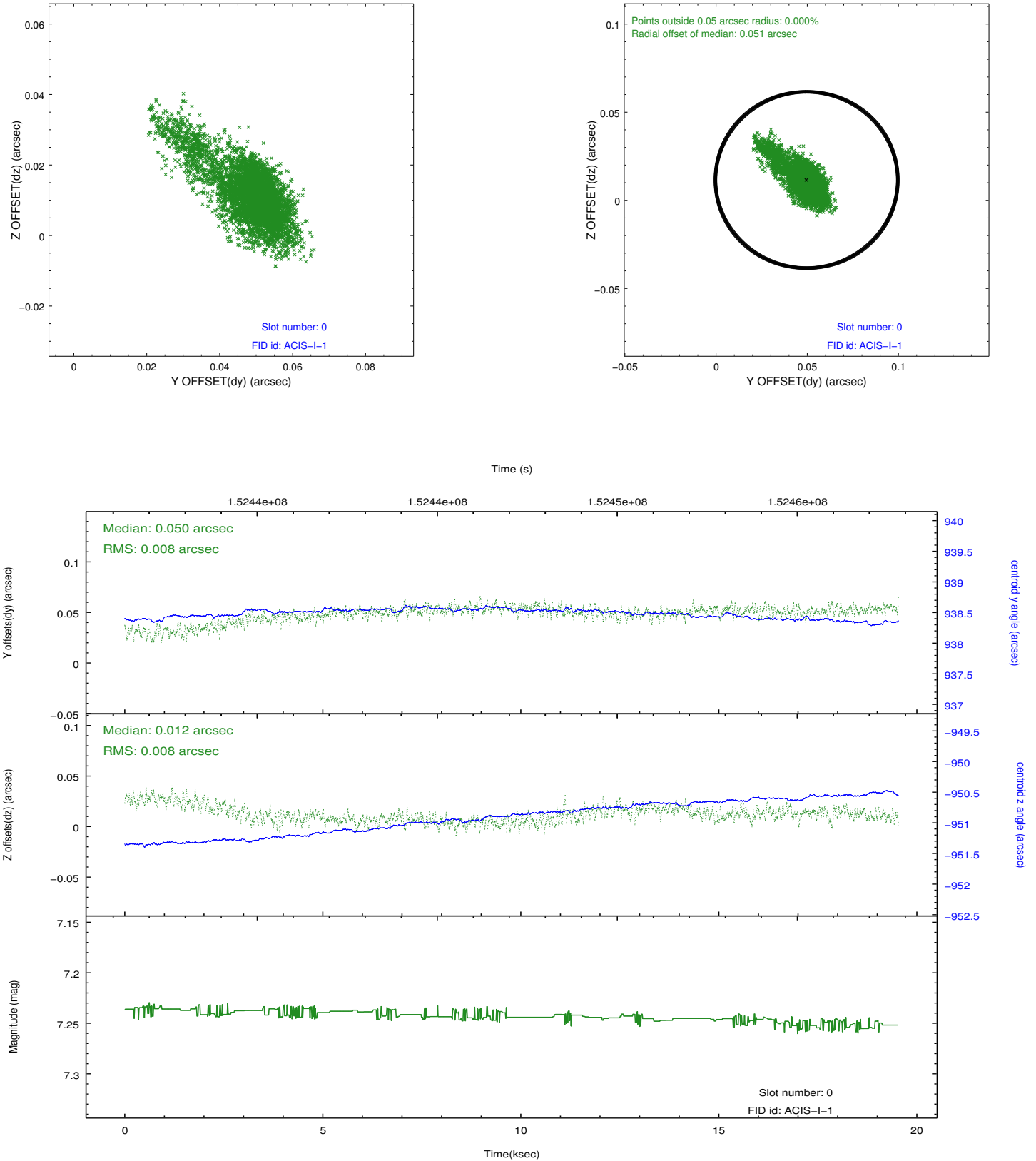


2.4.5 Slot 7

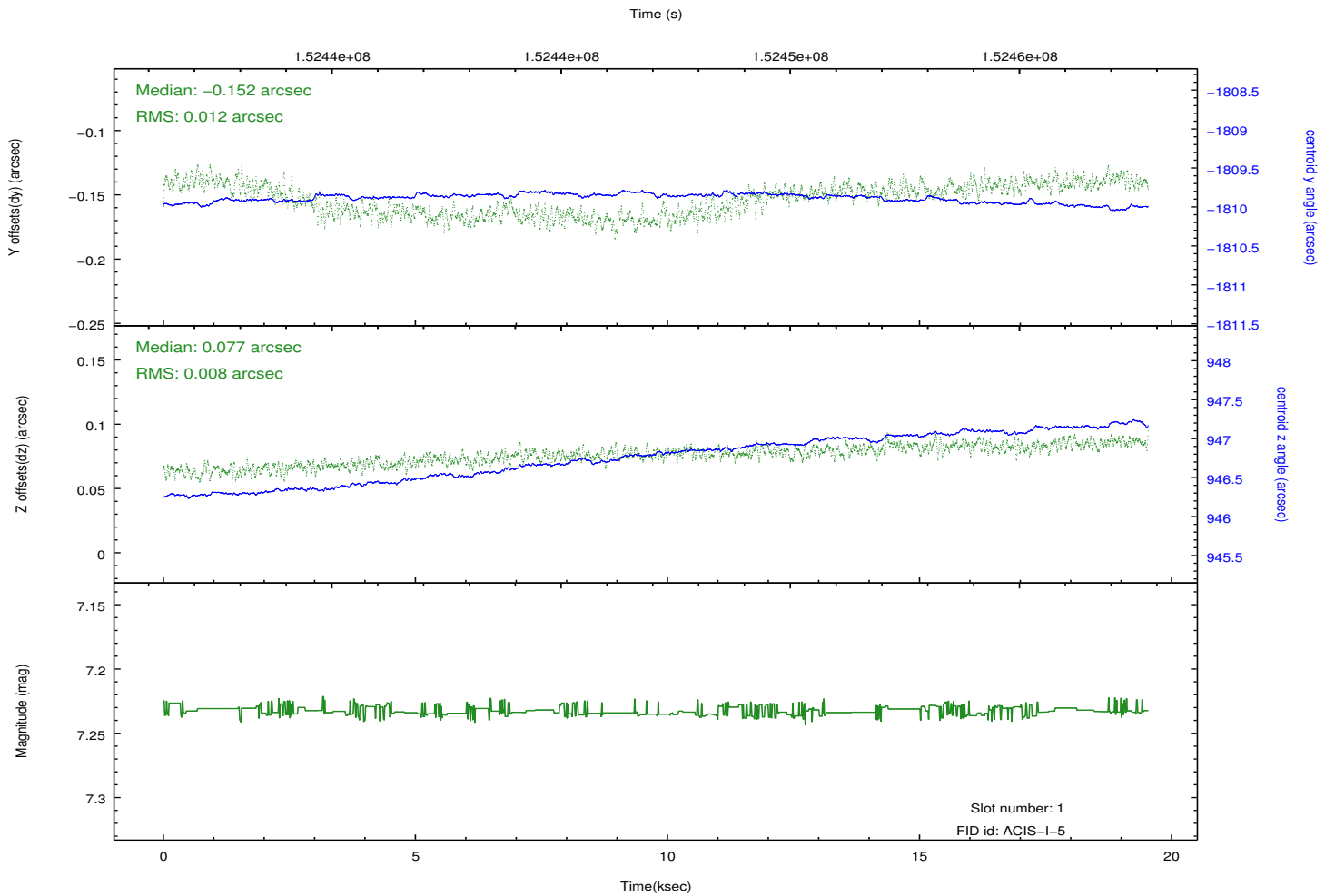
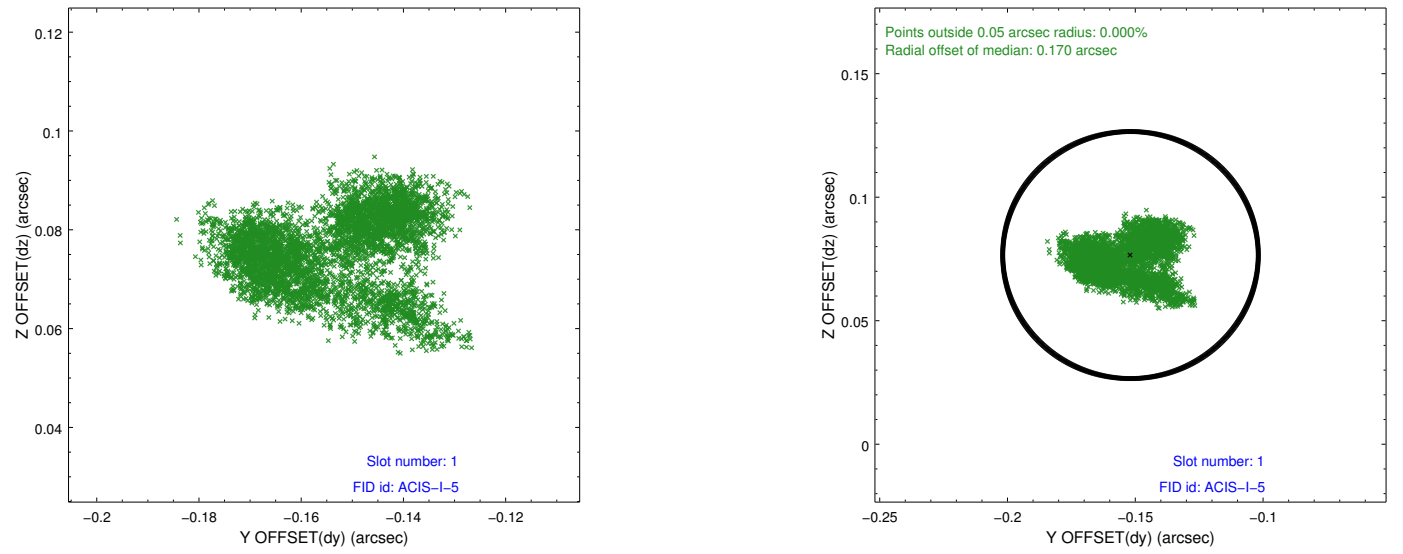


2.5 FID Slots

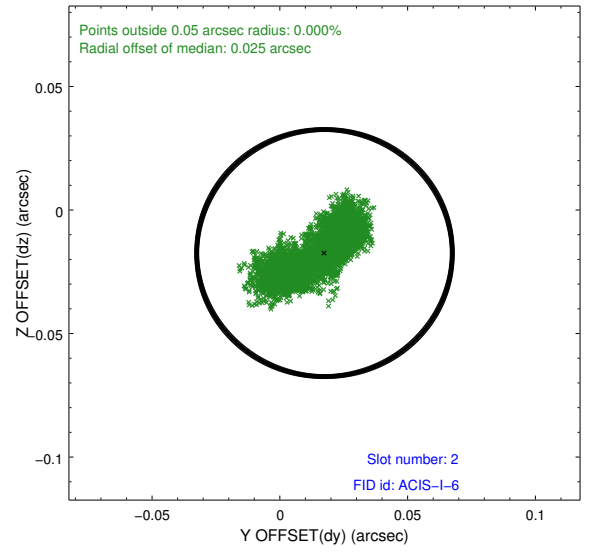
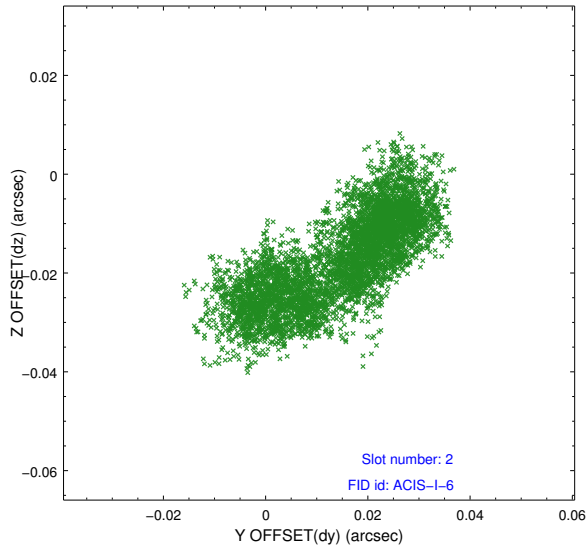
2.5.1 Slot 0



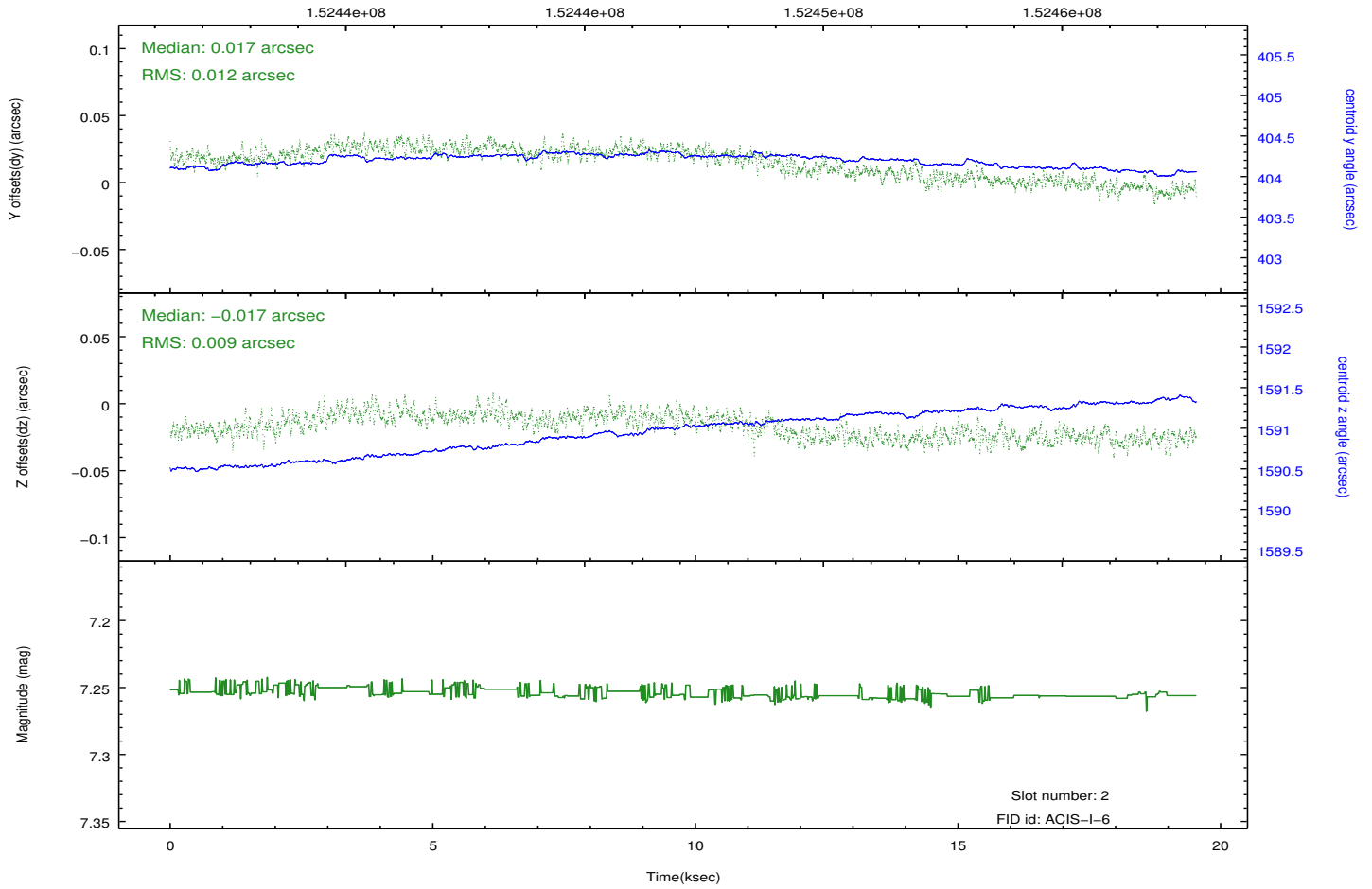
2.5.2 Slot 1



2.5.3 Slot 2



Time (s)



A Summary

A.1 Status

V&V Scientist	Jen Lauer
V&V Date (YYYY-MM-DD)	2012.10.25
V&V Edition	1
V&V Disposition and Status	OK
V&V Charge Time	19.529

A.2 Comments