

V&V Reference Report

L2 ASCDS Version : 8.4.5

Observation 3226 - L2 Version 3
Chandra X-Ray Center

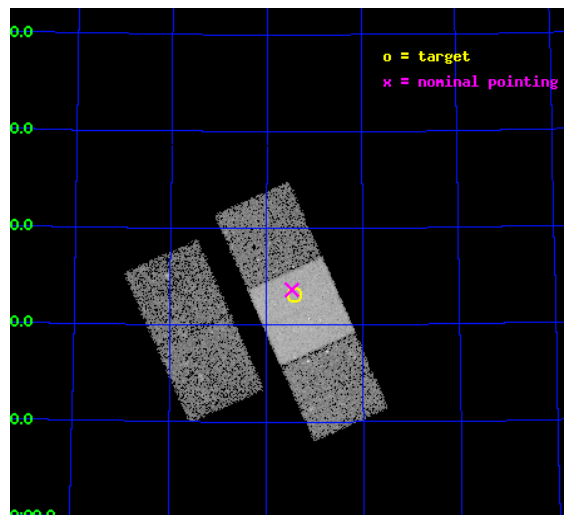
L2 Processing Date : Oct 14 2012

Contents

1	Front	2
2	OBI	3
2.1	OBI	3
2.1.1	Images	3
2.1.2	Bias	3
2.1.3	Parameters	4
2.1.4	Events	4
2.2	Compared Parameters	5
2.3	Aspect	6
2.4	Star Slots	9
2.4.1	Slot 3	9
2.4.2	Slot 4	10
2.4.3	Slot 5	11
2.4.4	Slot 6	12
2.4.5	Slot 7	13
2.5	FID Slots	14
2.5.1	Slot 0	14
2.5.2	Slot 1	15
2.5.3	Slot 2	16
A	Summary	17
A.1	Status	17
A.2	Comments	17

1 Front

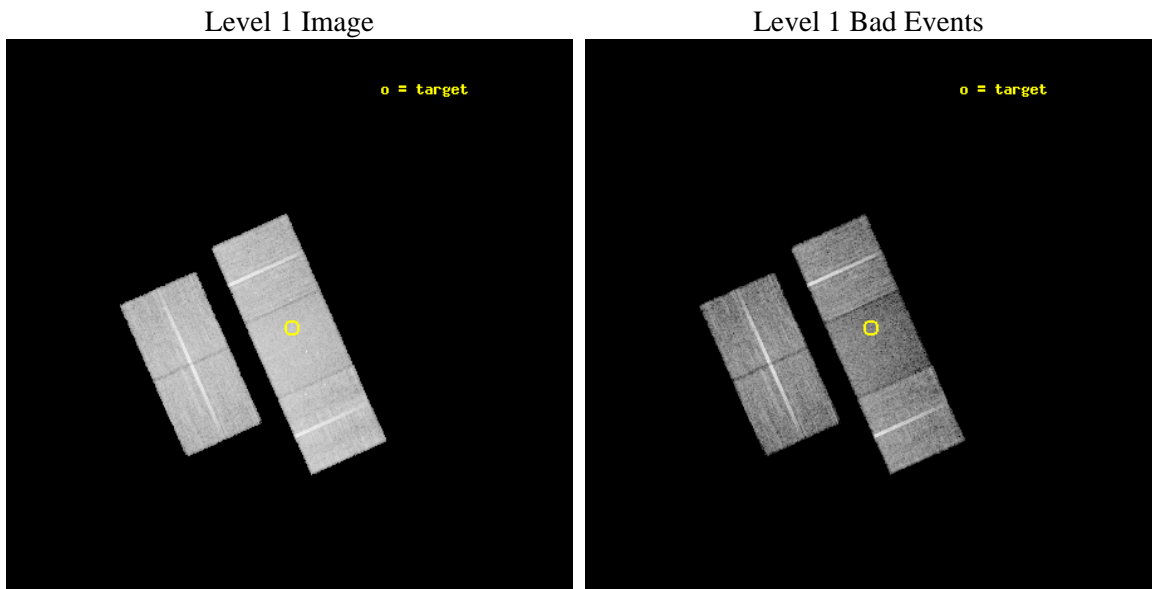
seq_num	800226	Sequence number
obs_id	3226	Observation id
title	DETECTION OF HIGH REDSHIFT CLUSTER OF GALAXIES AROUND 3CR184	Propo
observer	DR. TATEHIRO MIHARA	Principal investigator
object	3CR184 CLUSTER	Source name
dtcycle	0	
cycle	P	events from which exps? Prim/Second/Both
ra_targ	114.852083	Observer's specified target RA [deg]
dec_targ	70.386361	Observer's specified target Dec [deg]
ra_nom	114.86831357101	Nominal RA [deg]
dec_nom	70.394391846136	Nominal Dec [deg]
roll_nom	65.980318460255	Nominal Roll [deg]
revision	3	Processing version of data
ontime	19136.299963176	Sum of GTIs [s]
livetime	18886.270116218	Livetime [s]
ontime2	19133.159092605	Sum of GTIs [s]
ontime3	19136.299963176	Sum of GTIs [s]
ontime6	19136.299963176	Sum of GTIs [s]
ontime7	19136.299963176	Sum of GTIs [s]
ontime8	19133.158992946	Sum of GTIs [s]
l2events	82850	Number of level 2 events



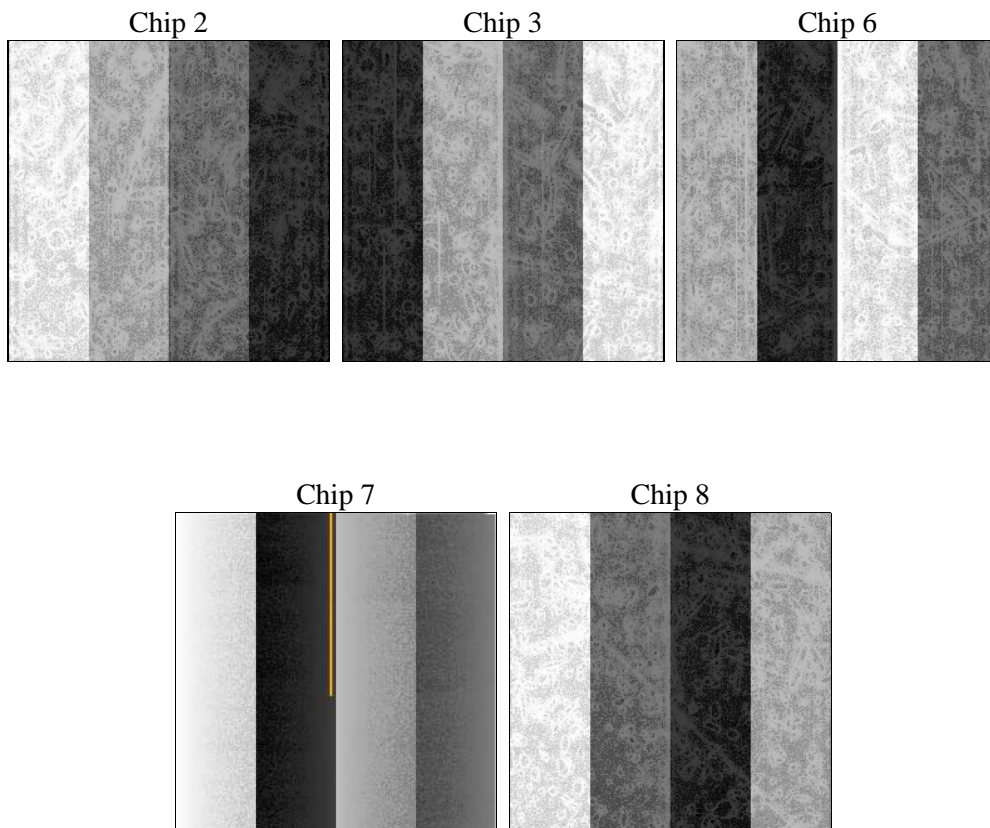
2 OBI

2.1 OBI

2.1.1 Images



2.1.2 Bias



2.1.3 Parameters

obi_num	0	Obi number	sched_exp_time	19000.000000	[s] Scheduled observation exposure time
ascdsver	8.4.5	Processing system revision	ontime	19136.299963176	Sum of GTIs [s]
caldbver	4.5.2	 	ontime2	19133.159092605	Sum of GTIs [s]
date	2012-10-14T18:44:27	Date and time of file creation	ontime3	19136.299963176	Sum of GTIs [s]
revision	3	Processing version of data	ontime6	19136.299963176	Sum of GTIs [s]
			ontime7	19136.299963176	Sum of GTIs [s]
			ontime8	19133.158992946	Sum of GTIs [s]
			l1events	561637	Number of level 1 events

2.1.4 Events

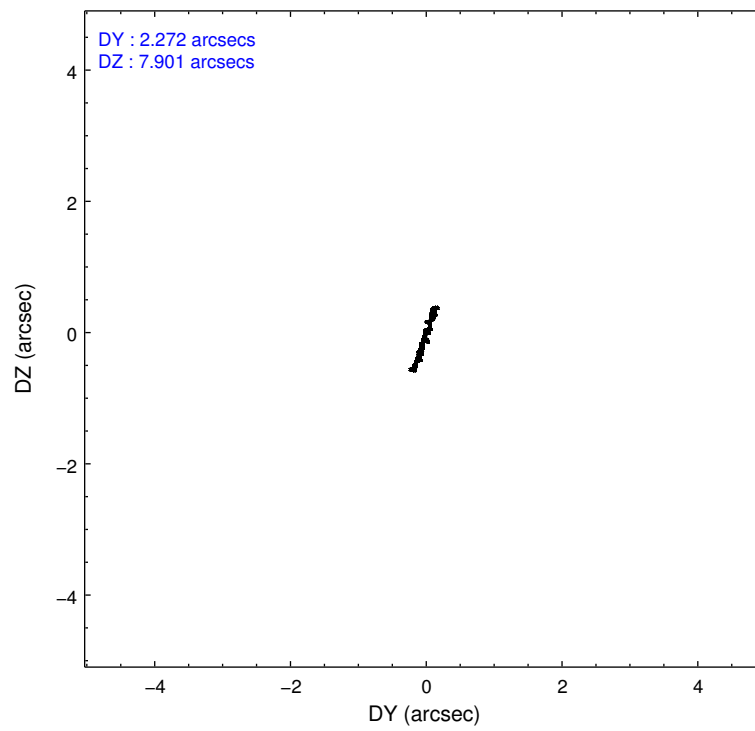
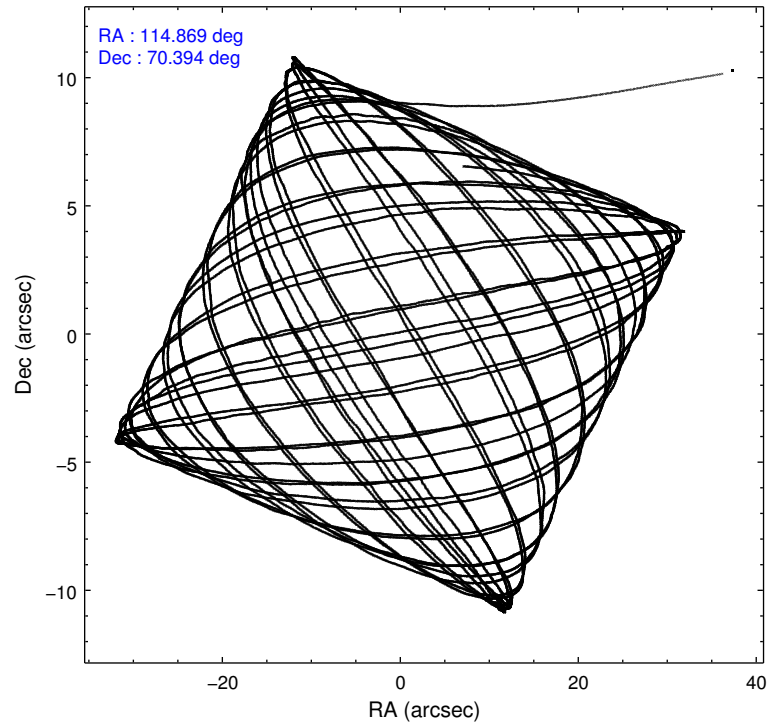
	ccd 2	ccd 3	ccd 6	ccd 7	ccd 8
level 1 events	105342	103971	107539	112940	131845
rejected events	95926	94904	97279	64035	103725
rejected %	91%	91%	90%	56%	78%

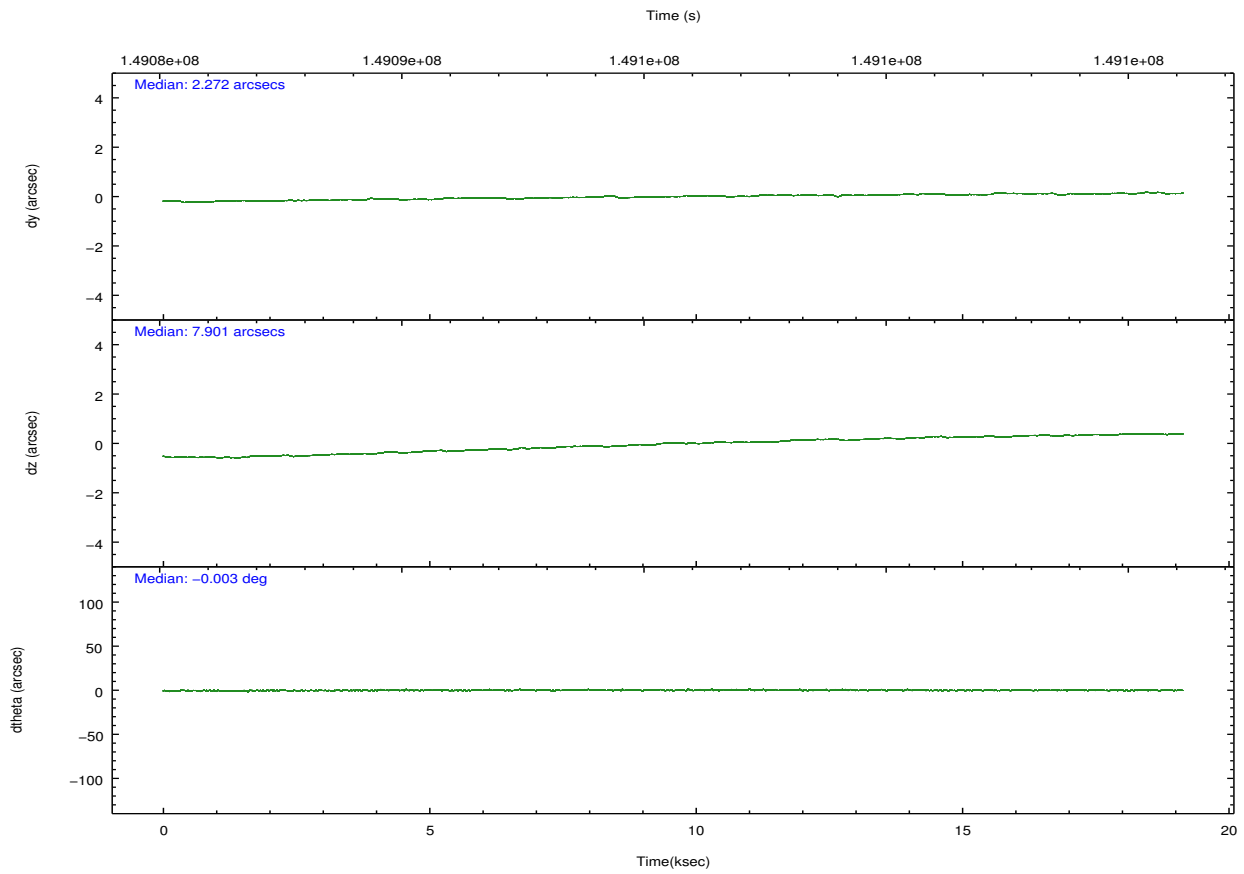
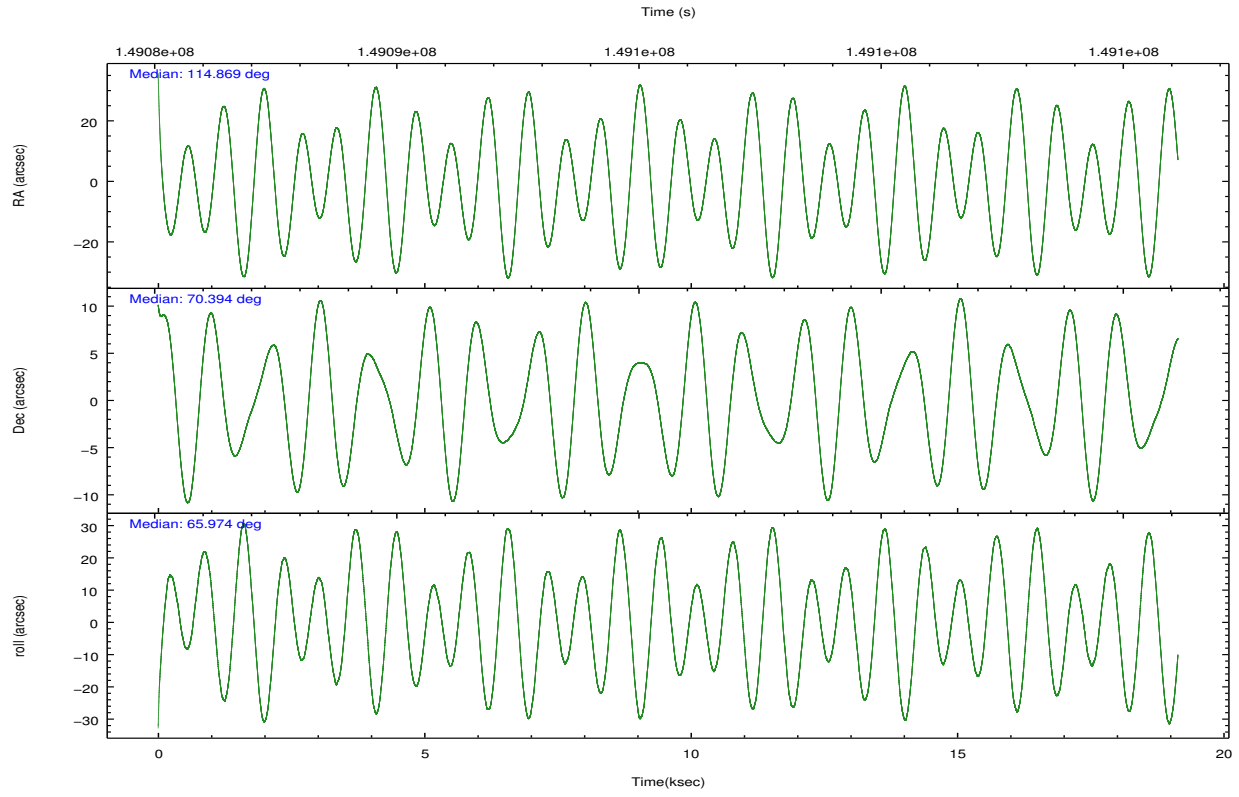
	ccd 2	ccd 3	ccd 6	ccd 7	ccd 8
grade 0 events	3493	3462	3753	4808	9058
	3%	3%	3%	4%	6%
grade 1 events	46	38	42	98	83
	0%	0%	0%	0%	0%
grade 2 events	2311	1956	2231	10357	6437
	2%	1%	2%	9%	4%
grade 3 events	1167	1156	1291	4987	3286
	1%	1%	1%	4%	2%
grade 4 events	1134	1101	1199	4891	3032
	1%	1%	1%	4%	2%
grade 5 events	3274	3926	4038	12242	5727
	3%	3%	3%	10%	4%
grade 6 events	1845	1892	2316	26358	7634
	1%	1%	2%	23%	5%
grade 7 events	92072	90440	92669	49199	96588
	87%	86%	86%	43%	73%

2.2 Compared Parameters

Parameter	Planned	Actual	Parameter	Planned	Actual
Instrument	ACIS	ACIS	Obspar format version number	7	7
Detector	ACIS-23678	ACIS-23678	Obspar file type	PREDICTED	ACTUAL
Grating	NONE	NONE	Obspar update status	NONE	UPDATED
Data mode	VFAINT	VFAINT	Number of optional ACIS chips dropped	0	0
Observation mode	POINTING	POINTING	On-chip summing requested	N	N
[deg] Pointing RA	114.877786	114.8683135710118	Subarray requested	NONE	NONE
[deg] Pointing Dec	70.367332	70.39439184613616	Alternating exposures requested	N	N
[deg] Pointing Roll	65.814772	65.98031846025545	[s] Primary exposure time	0.000000	3.1
[mm] SIM focus pos	-0.684267	-0.6828225247311905			
[mm] SIM defocus	0	0.001444936568705701			
[mm] SIM translation stage pos	-190.132523	-190.1400660498719			
[mm] SIM translation stage offset	0	0.00754346686406393			
[s] Observation start time (MET)	149086168.184000	149084698.46866			
Observation start date	2002-09-22T12:48:24	2002-09-22T12:24:58			
[s] Observation end time (MET)	149105168.184000	149106803.61958			
Observation end date	2002-09-22T18:05:04	2002-09-22T18:33:23			
Read mode	TIMED	TIMED			

2.3 Aspect



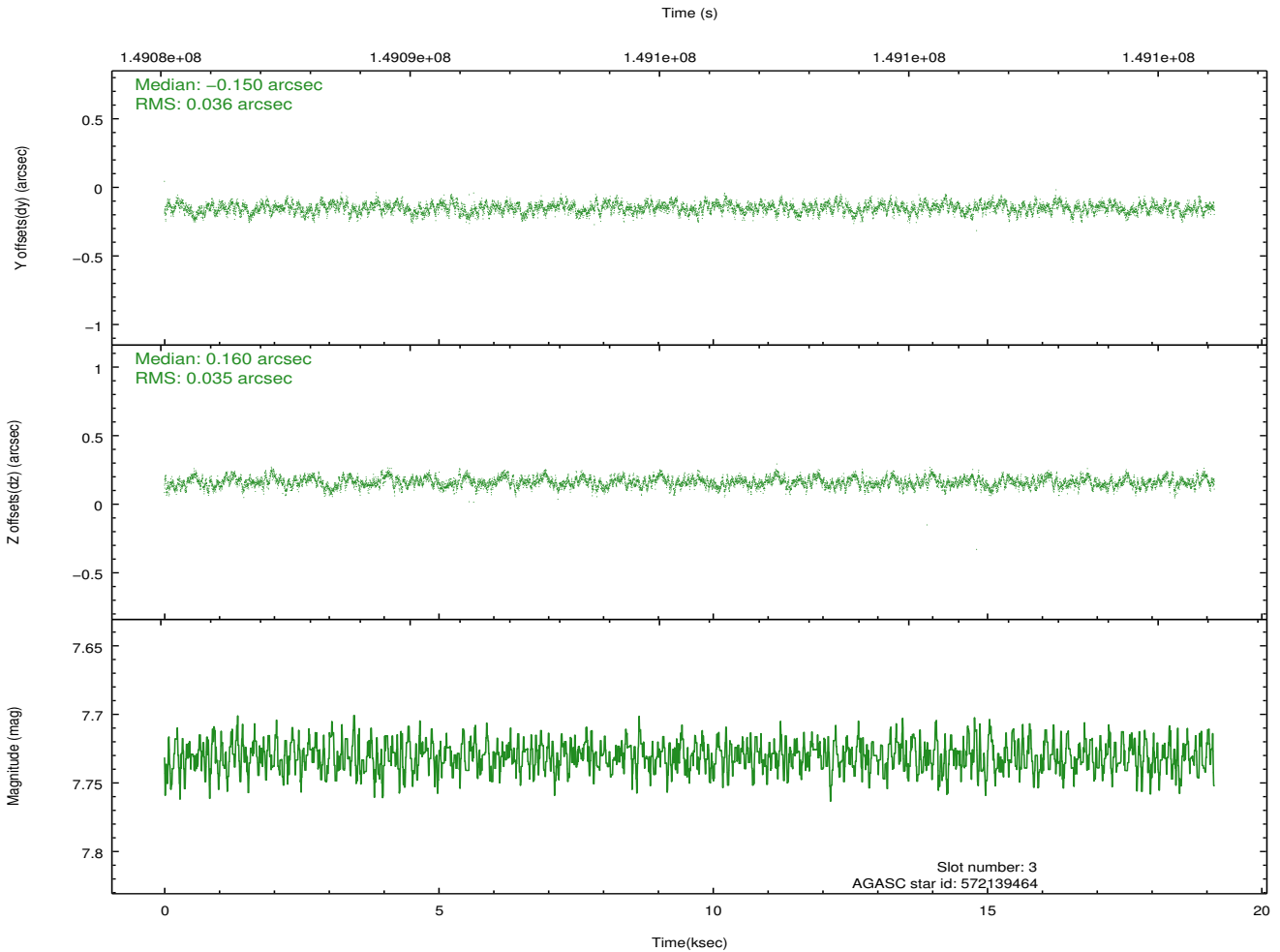
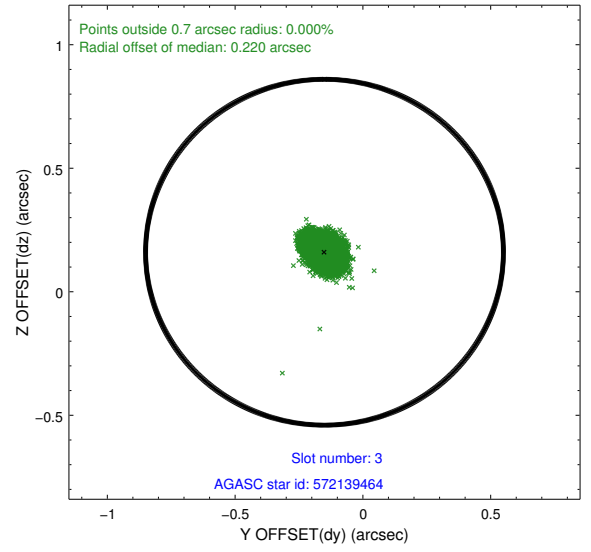
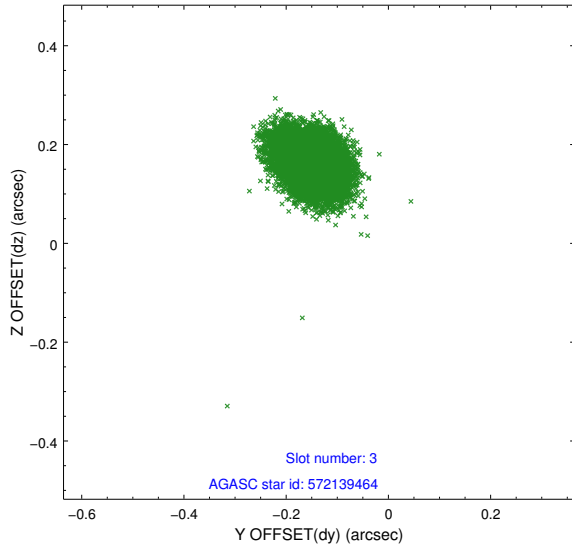


Slot Statistics

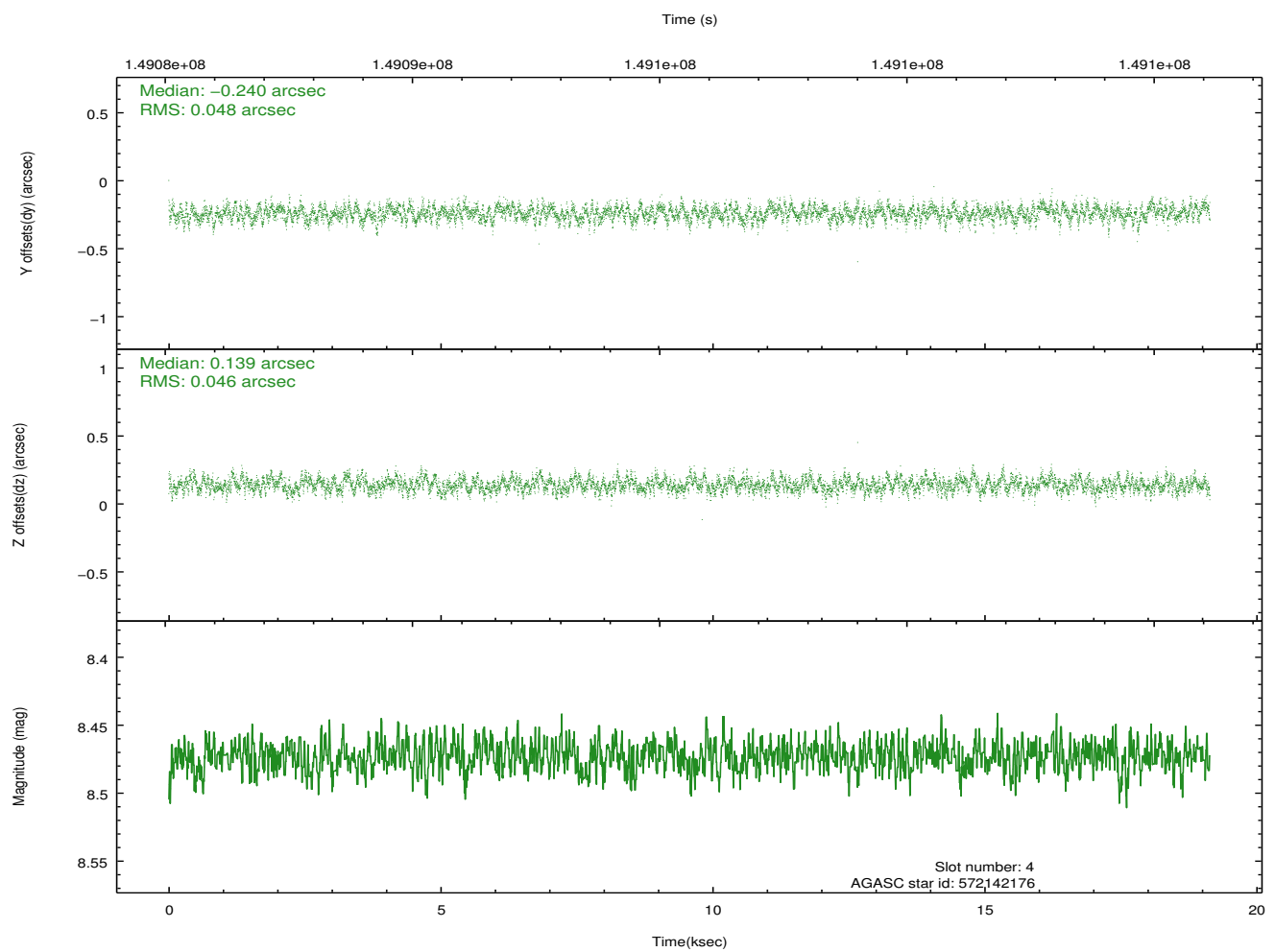
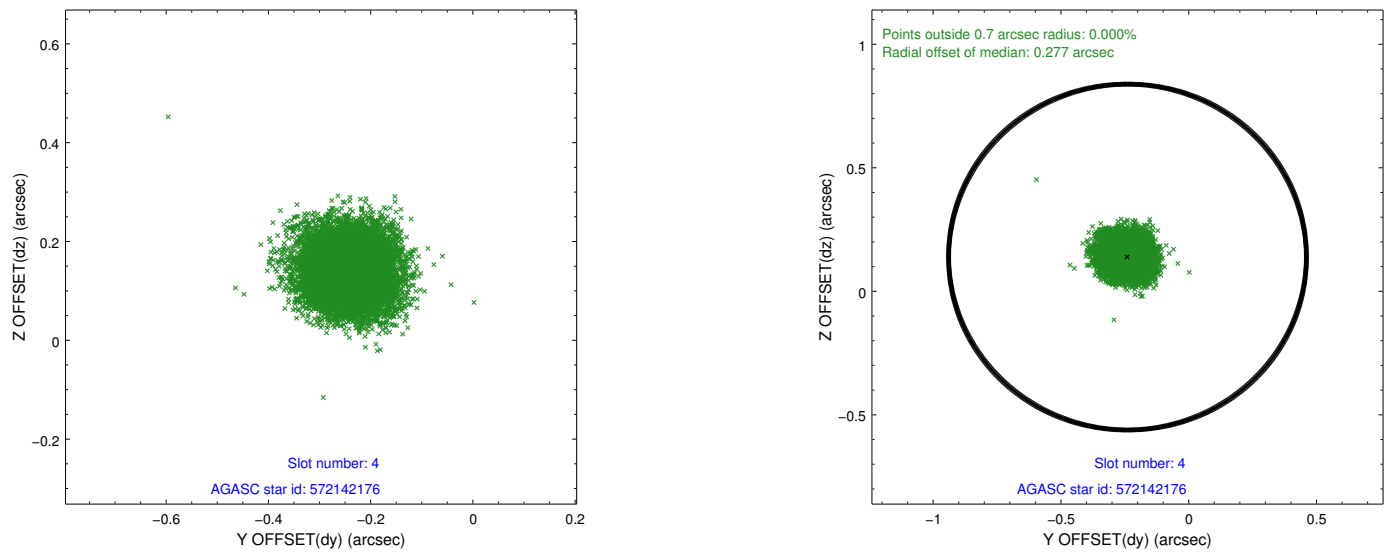
slot	status	id	mag	n_pts	med_dy	med_dz	dr1	dr2	ra	dec	mean_y	mean_z
0	FID	ACIS-S-2	7.11	4669	-0.016	0.004	0.008	0.014	0.000000	0.000000	-754.92	-1729.02
1	FID	ACIS-S-4	7.20	4669	-0.036	0.006	0.007	0.013	0.000000	0.000000	2158.27	179.23
2	FID	ACIS-S-5	7.24	4668	0.020	-0.002	0.010	0.017	0.000000	0.000000	-1807.44	173.16
3	GUIDE	572139464	7.73	9338	-0.150	0.160	0.053	0.087	116.112761	70.744532	1853.08	-773.98
4	GUIDE	572142176	8.47	9335	-0.240	0.139	0.070	0.113	116.984175	70.780062	2417.89	-1649.37
5	GUIDE	572007720	8.97	9332	0.292	-0.189	0.083	0.133	113.075233	70.104208	-1738.17	1639.76
6	GUIDE	572131544	9.06	9336	0.078	0.035	0.079	0.123	115.081370	70.017824	-1044.48	-742.96
7	GUIDE	572005592	9.33	9330	0.029	-0.149	0.103	0.165	113.587769	70.466256	-296.11	1569.51

2.4 Star Slots

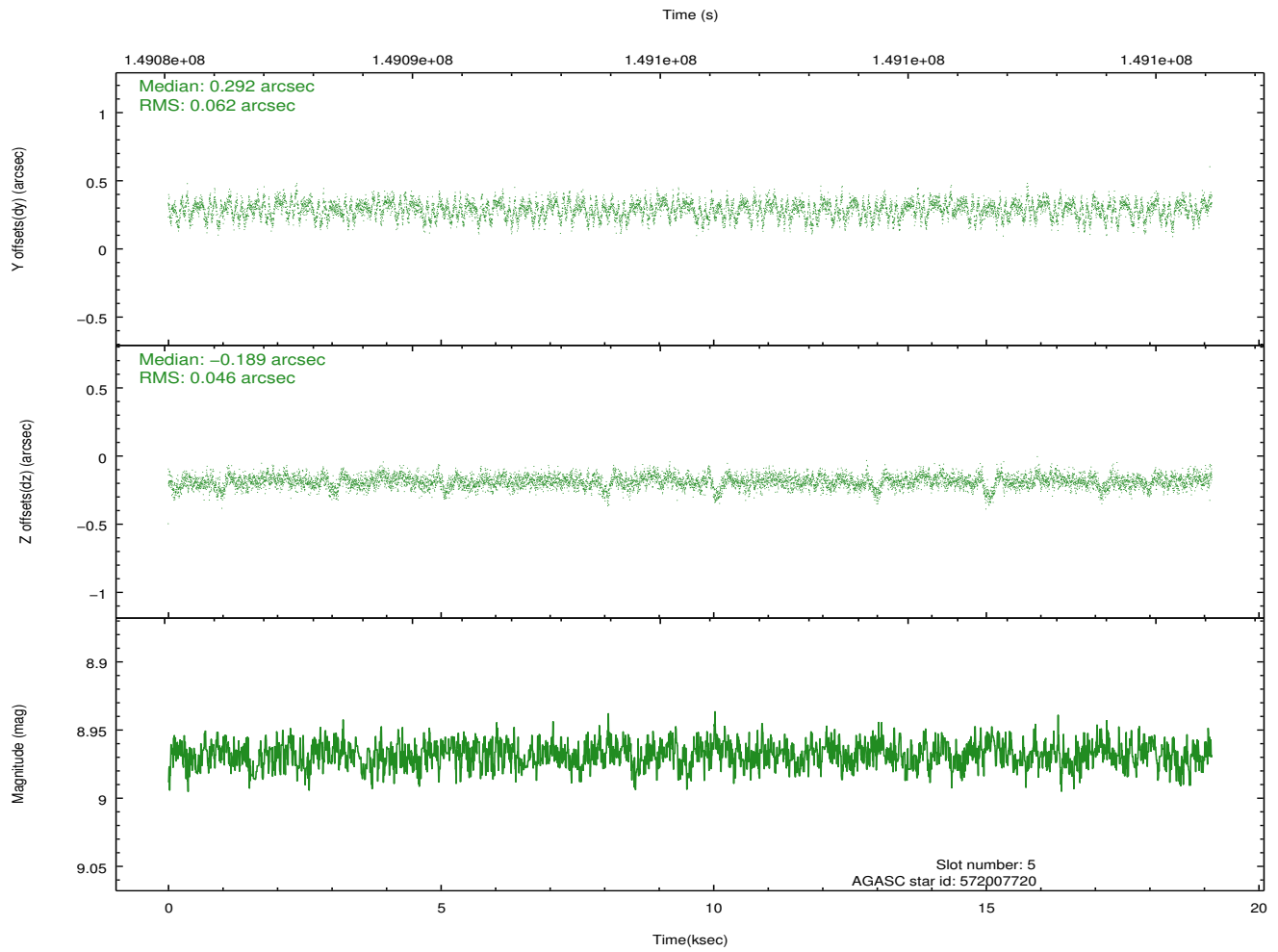
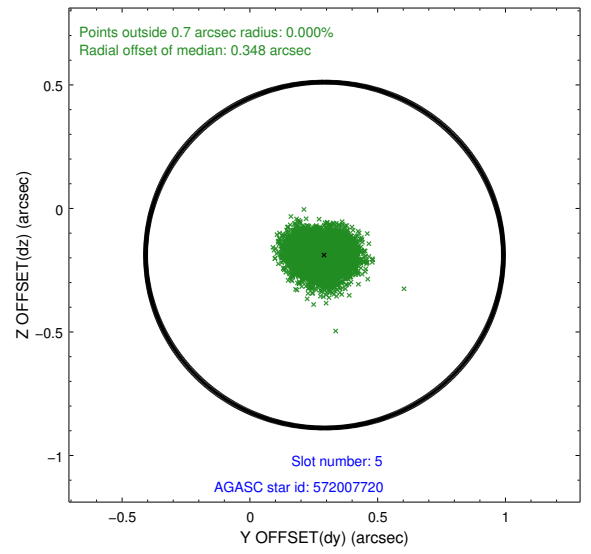
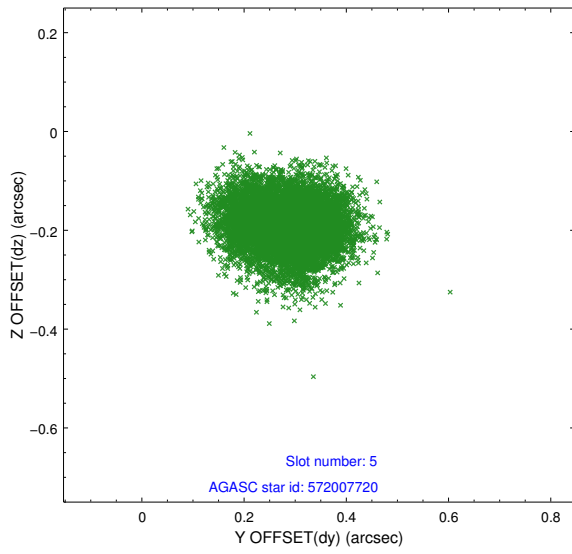
2.4.1 Slot 3



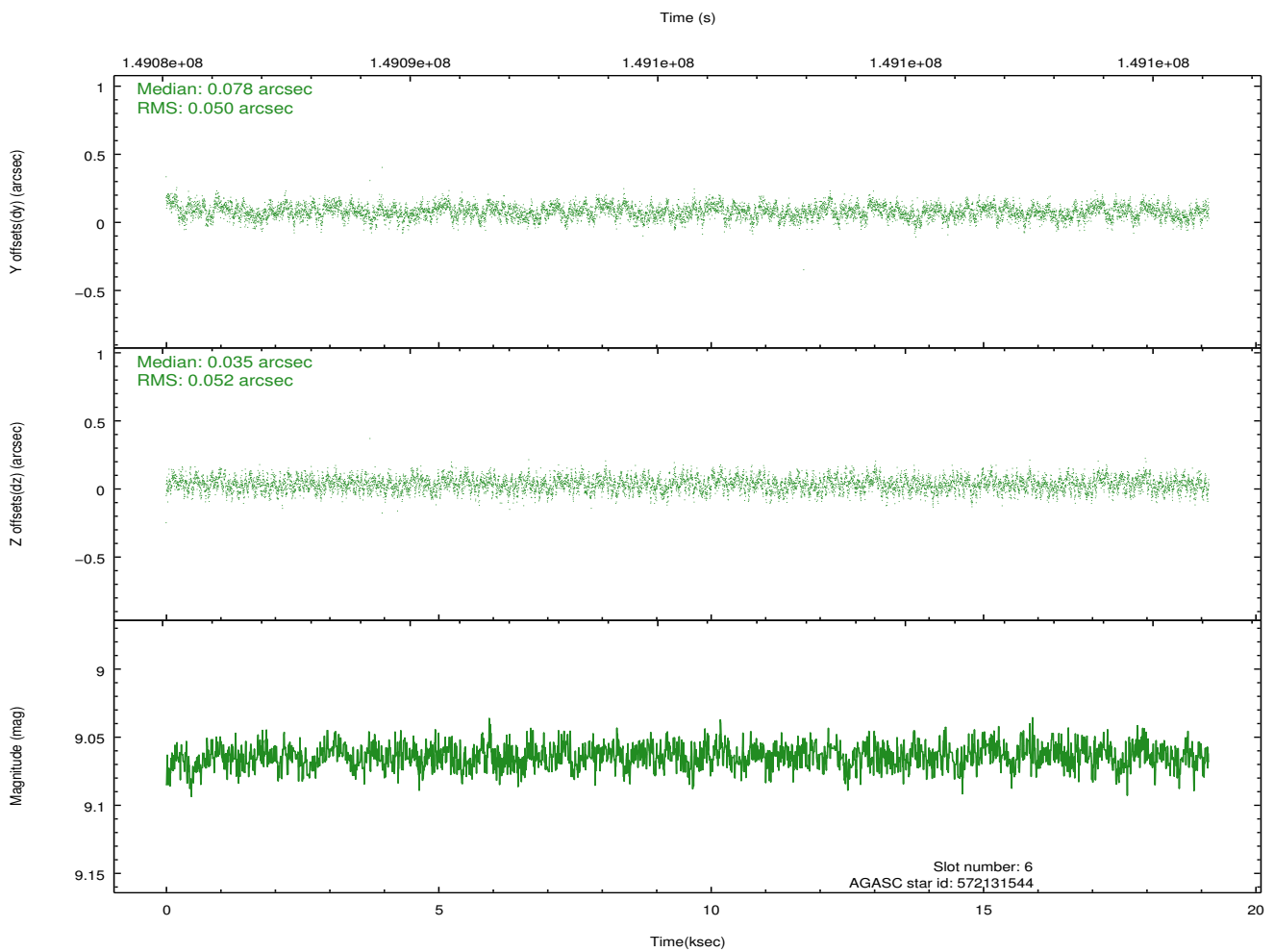
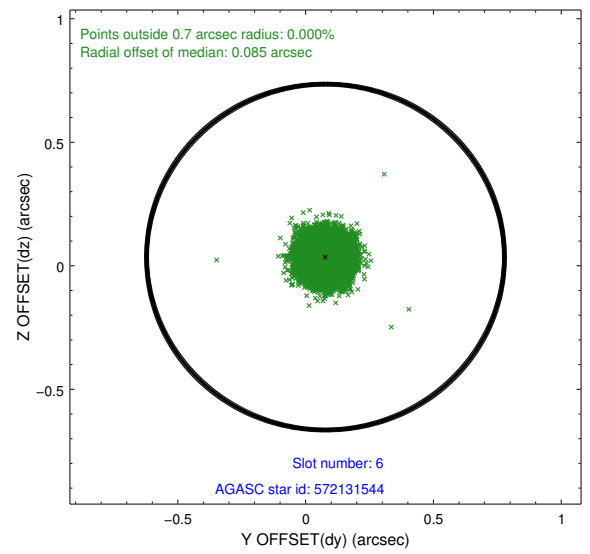
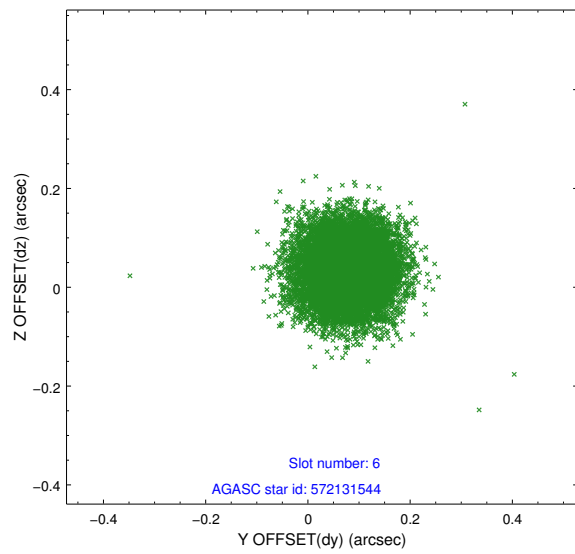
2.4.2 Slot 4



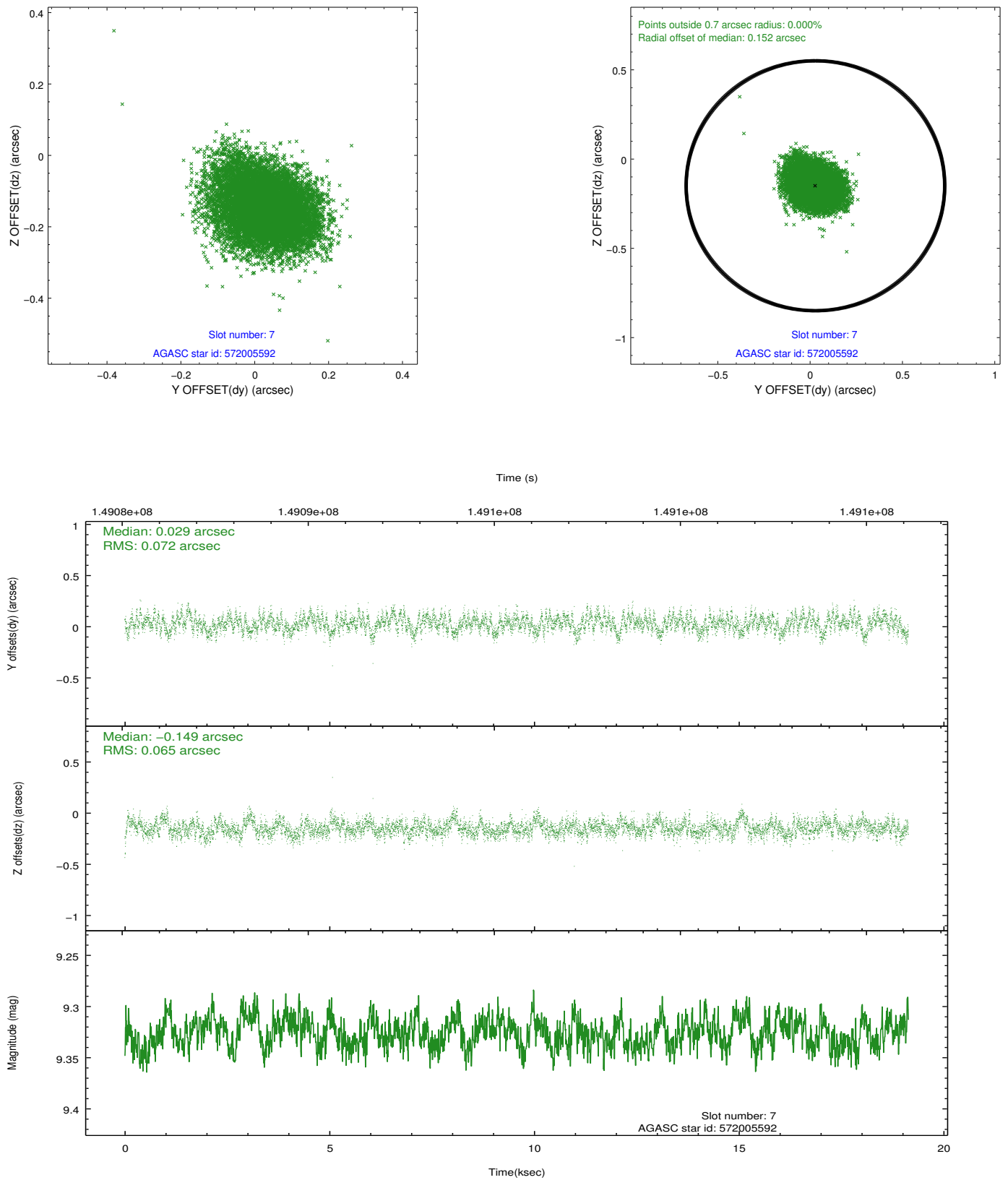
2.4.3 Slot 5



2.4.4 Slot 6

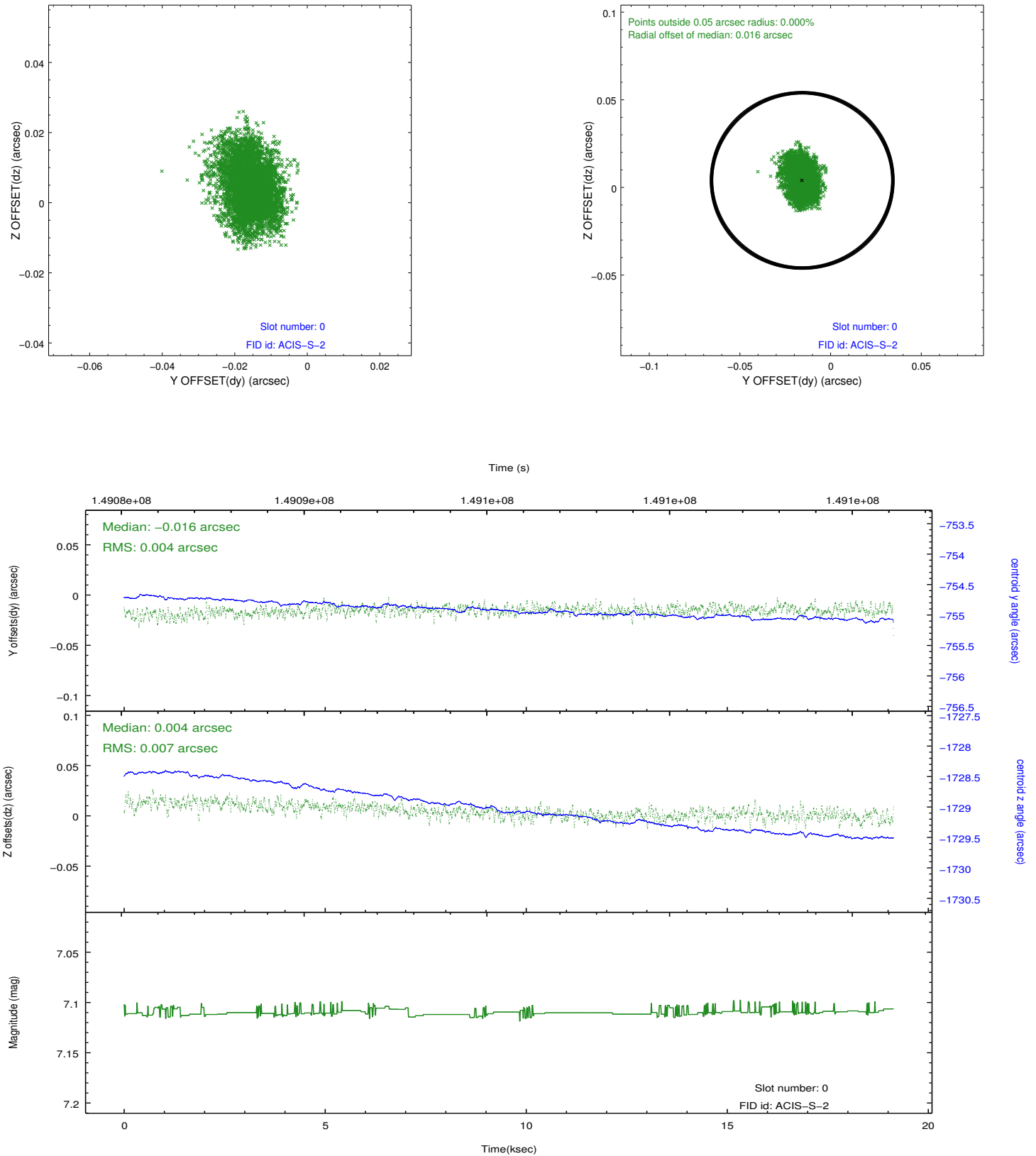


2.4.5 Slot 7

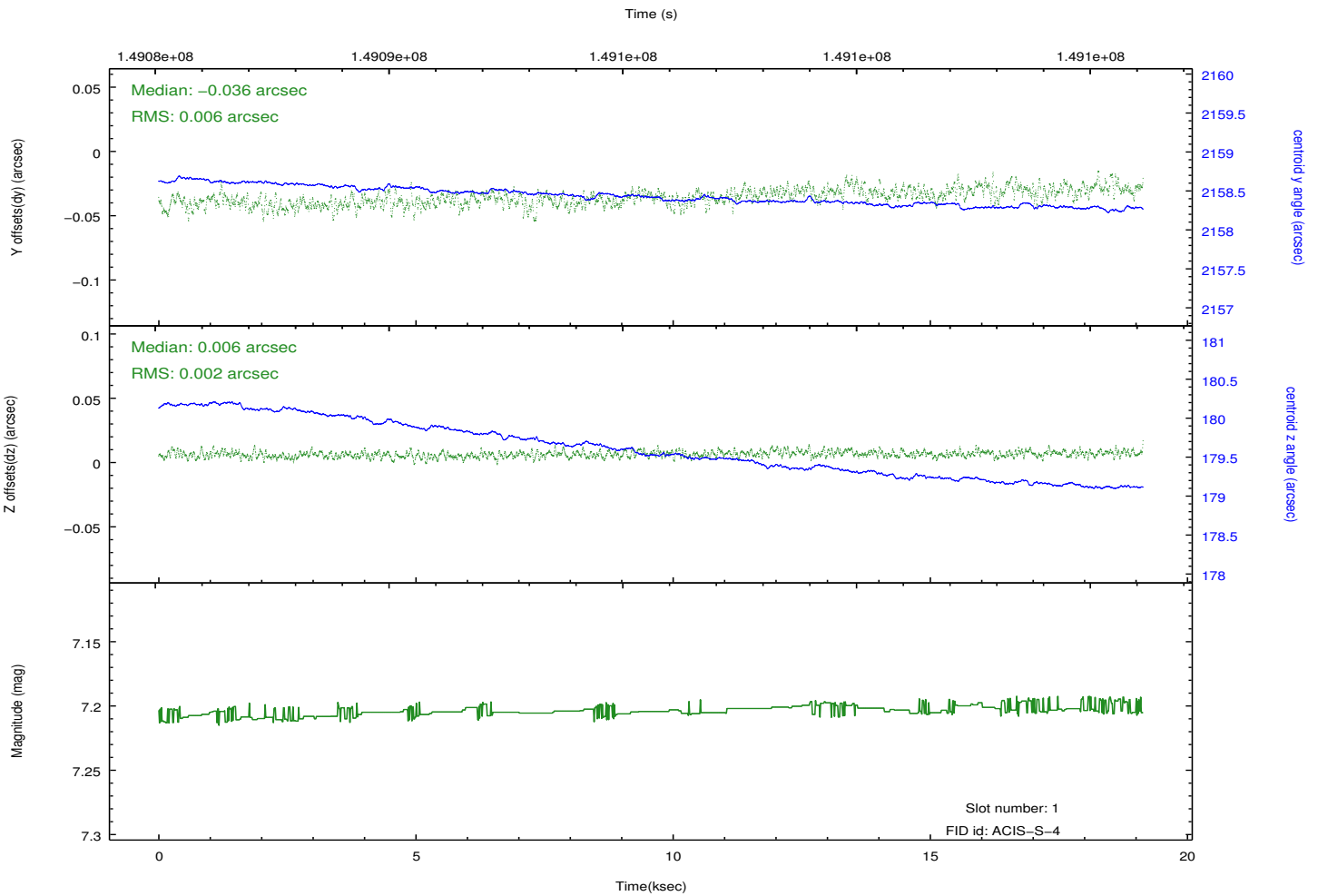
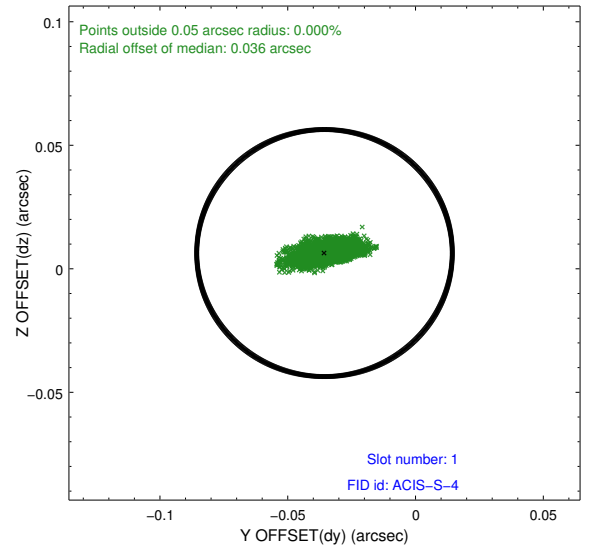
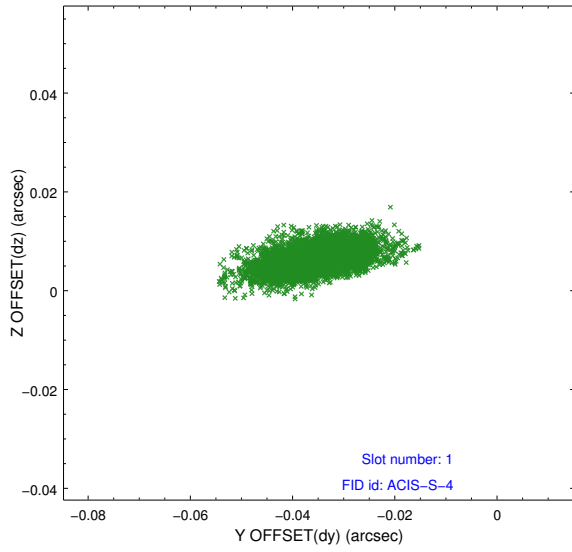


2.5 FID Slots

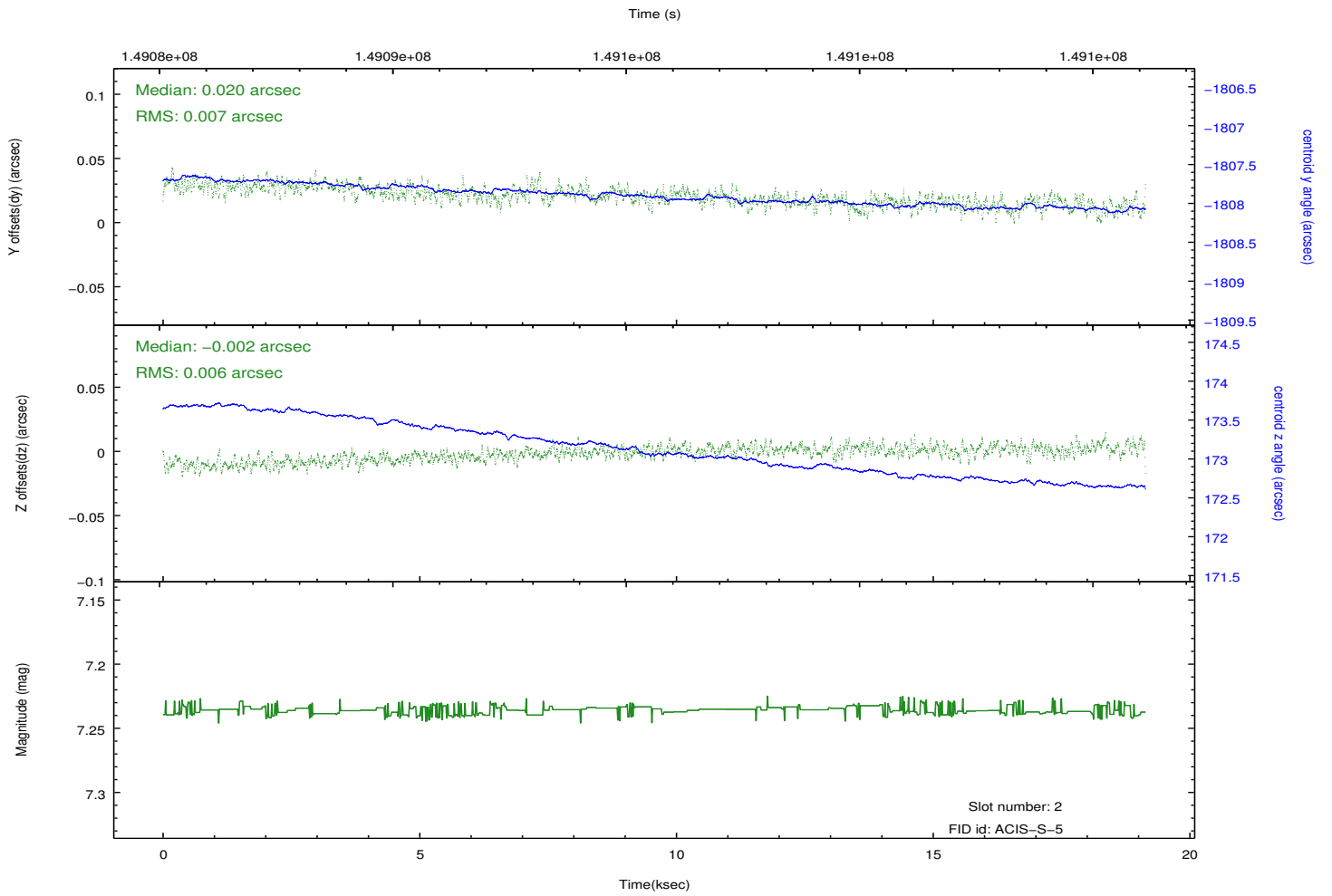
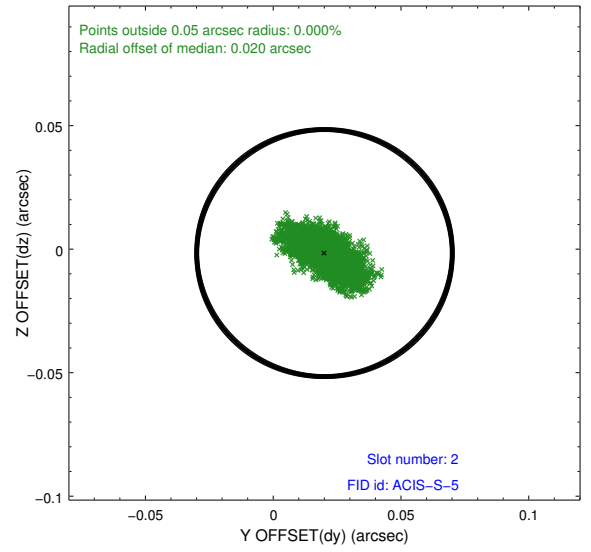
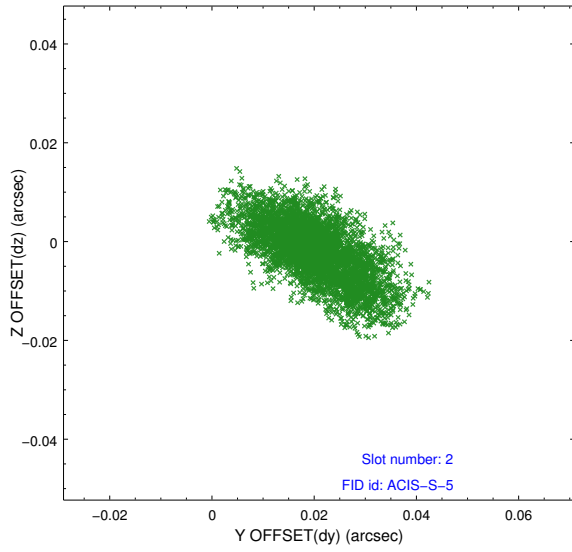
2.5.1 Slot 0



2.5.2 Slot 1



2.5.3 Slot 2



A Summary

A.1 Status

V&V Scientist	Jen Lauer
V&V Date (YYYY-MM-DD)	2012.10.24
V&V Edition	1
V&V Disposition and Status	OK
V&V Charge Time	19.136

A.2 Comments