

V&V Reference Report

L2 ASCDS Version : 8.4.5

Observation 3256 - L2 Version 3
Chandra X-Ray Center

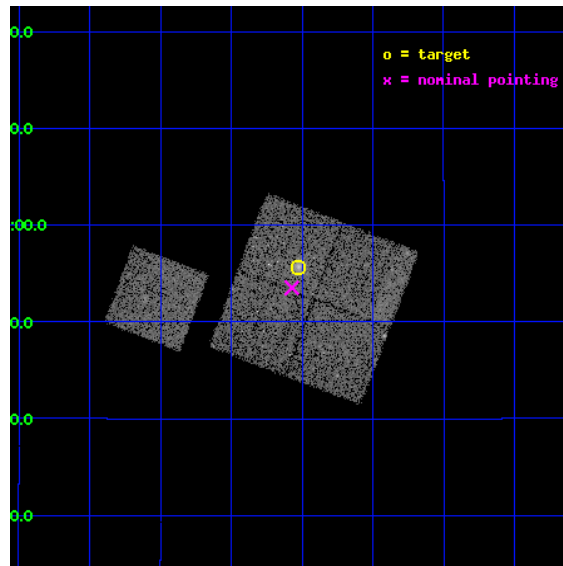
L2 Processing Date : Oct 17 2012

Contents

1	Front	2
2	OBI	3
2.1	OBI	3
2.1.1	Images	3
2.1.2	Bias	3
2.1.3	Parameters	4
2.1.4	Events	4
2.2	Compared Parameters	5
2.3	Aspect	6
2.4	Star Slots	9
2.4.1	Slot 3	9
2.4.2	Slot 4	10
2.4.3	Slot 5	11
2.4.4	Slot 6	12
2.4.5	Slot 7	13
2.5	FID Slots	14
2.5.1	Slot 0	14
2.5.2	Slot 1	15
2.5.3	Slot 2	16
A	Summary	17
A.1	Status	17
A.2	Comments	17

1 Front

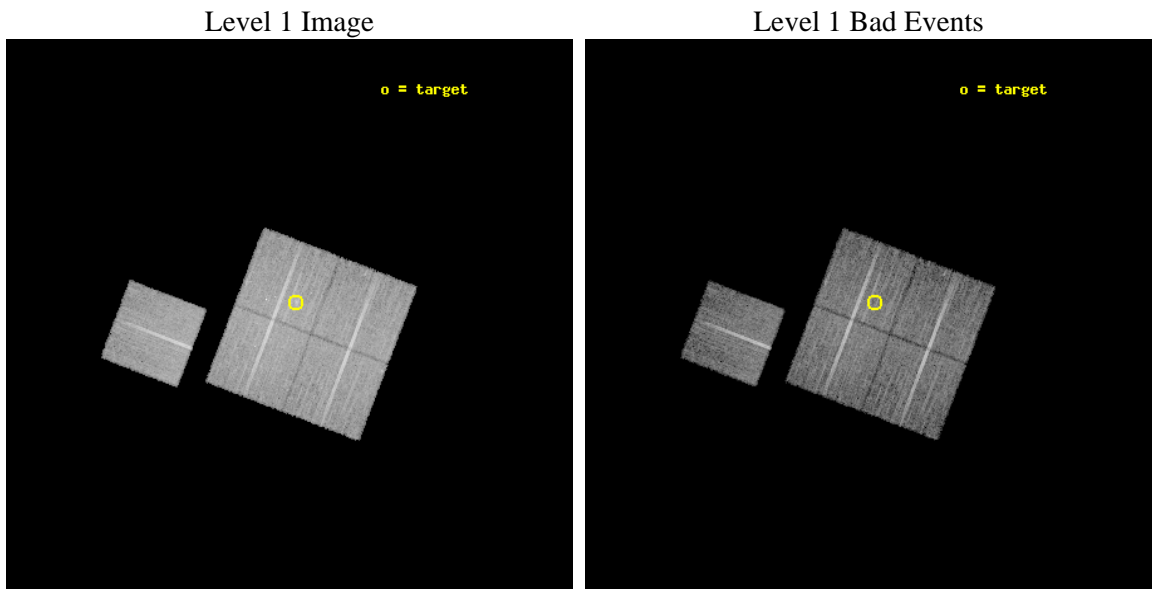
seq_num	800256	Sequence number
obs_id	3256	Observation id
title	OBSERVATION OF MACS CLUSTERS, 0.45	Proposal title
observer	DR. LEON VANSPEYBROECK	Principal investigator
object	MACS-J0111.5+0855	Source name
dtycycle	0	
cycle	P	events from which exps? Prim/Second/Both
ra_targ	17.88125	Observer's specified target RA [deg]
dec_targ	8.927778	Observer's specified target Dec [deg]
ra_nom	17.893004988376	Nominal RA [deg]
dec_nom	8.8919584016174	Nominal Dec [deg]
roll_nom	290.92278240906	Nominal Roll [deg]
revision	3	Processing version of data
ontime	19643.790560842	Sum of GTIs [s]
livetime	19387.129975616	Livetime [s]
ontime0	19640.526430786	Sum of GTIs [s]
ontime1	19643.708480835	Sum of GTIs [s]
ontime2	19640.608510792	Sum of GTIs [s]
ontime3	19643.790560842	Sum of GTIs [s]
ontime6	19637.344440371	Sum of GTIs [s]
l2events	42073	Number of level 2 events



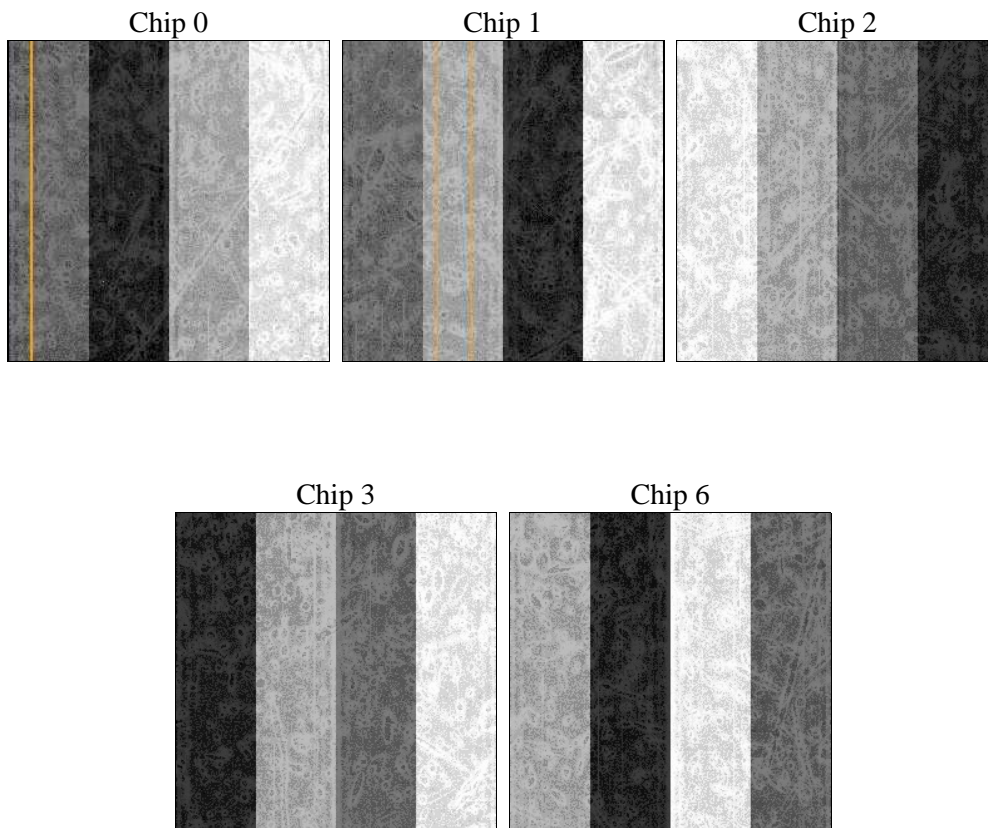
2 OBI

2.1 OBI

2.1.1 Images



2.1.2 Bias



2.1.3 Parameters

obi_num	0	Obi number	sched_exp_time	19900.000000	[s] Scheduled observation exposure time
ascdsver	8.4.5	Processing system revision	ontime	19643.790560842	Sum of GTIs [s]
caldbver	4.5.2	 	ontime0	19640.526430786	Sum of GTIs [s]
date	2012-10-17T12:02:28	Date and time of file creation	ontime1	19643.708480835	Sum of GTIs [s]
revision	3	Processing version of data	ontime2	19640.608510792	Sum of GTIs [s]
			ontime3	19643.790560842	Sum of GTIs [s]
			ontime6	19637.344440371	Sum of GTIs [s]
			l1events	472833	Number of level 1 events

2.1.4 Events

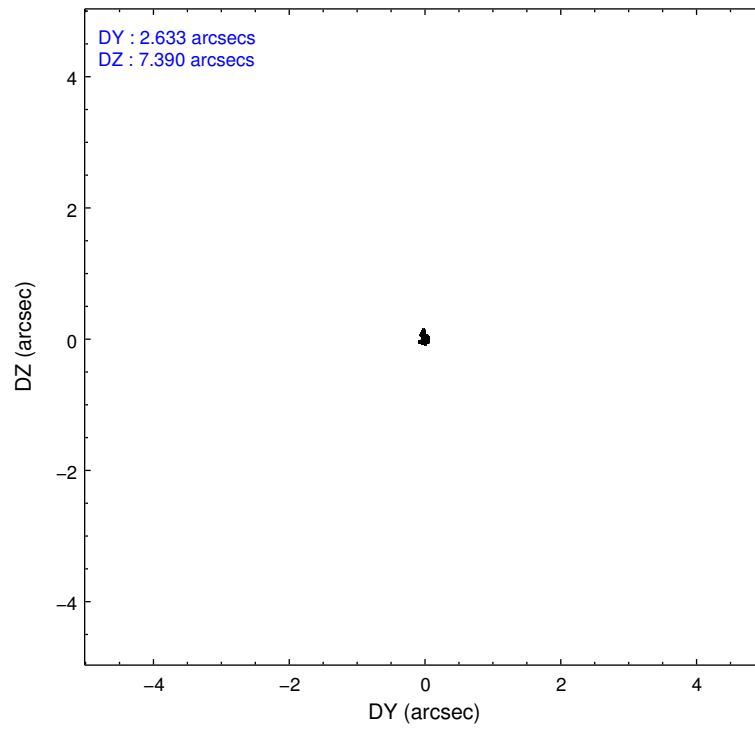
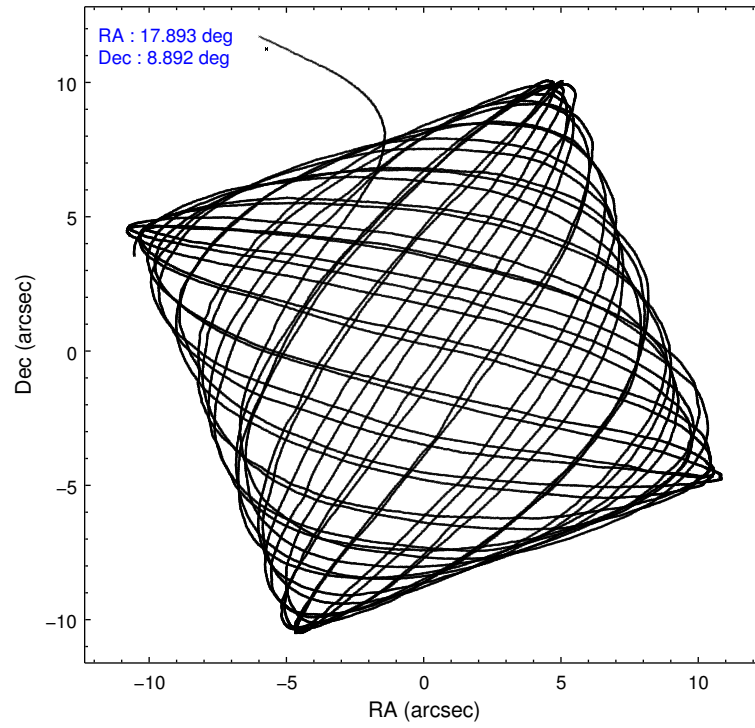
	ccd 0	ccd 1	ccd 2	ccd 3	ccd 6
level 1 events	88409	90408	100694	99637	93685
rejected events	78739	80071	91009	88636	83906
rejected %	89%	88%	90%	88%	89%

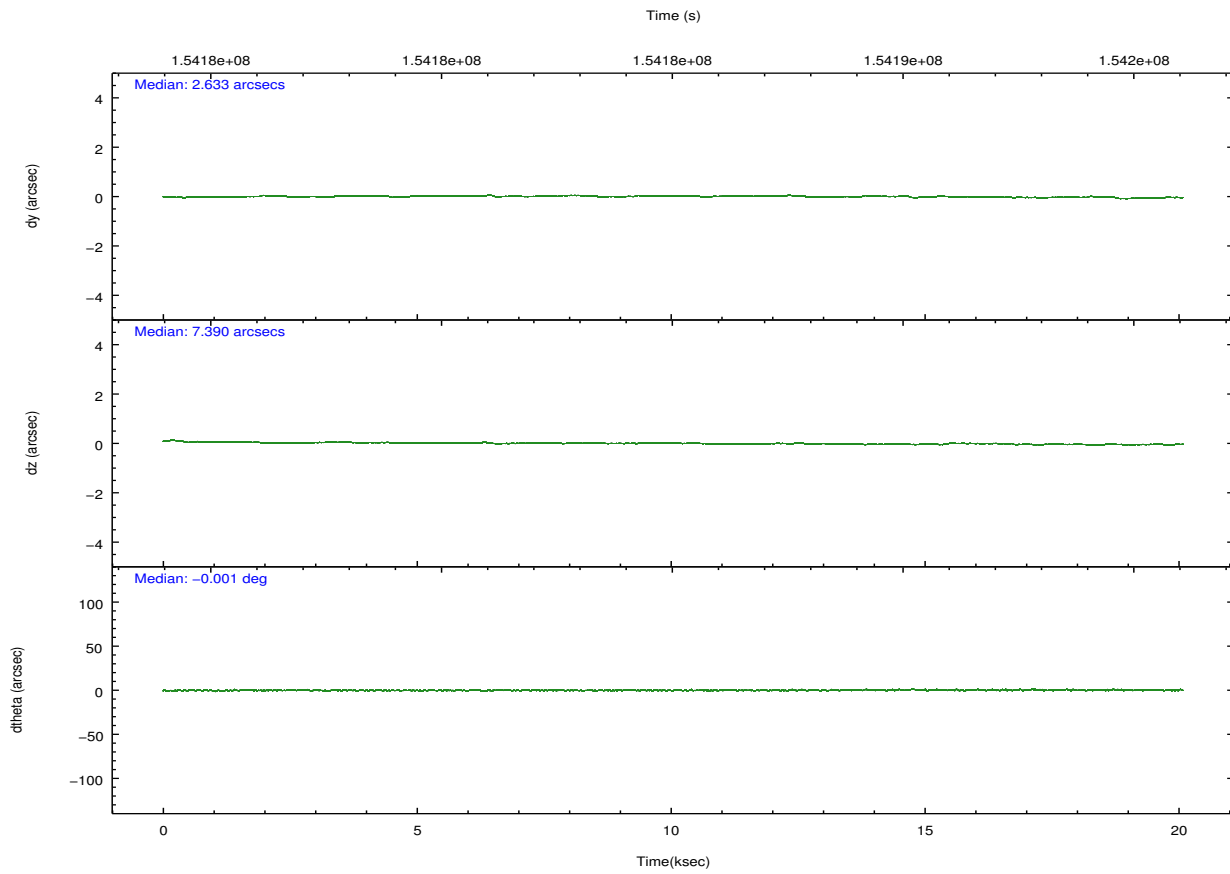
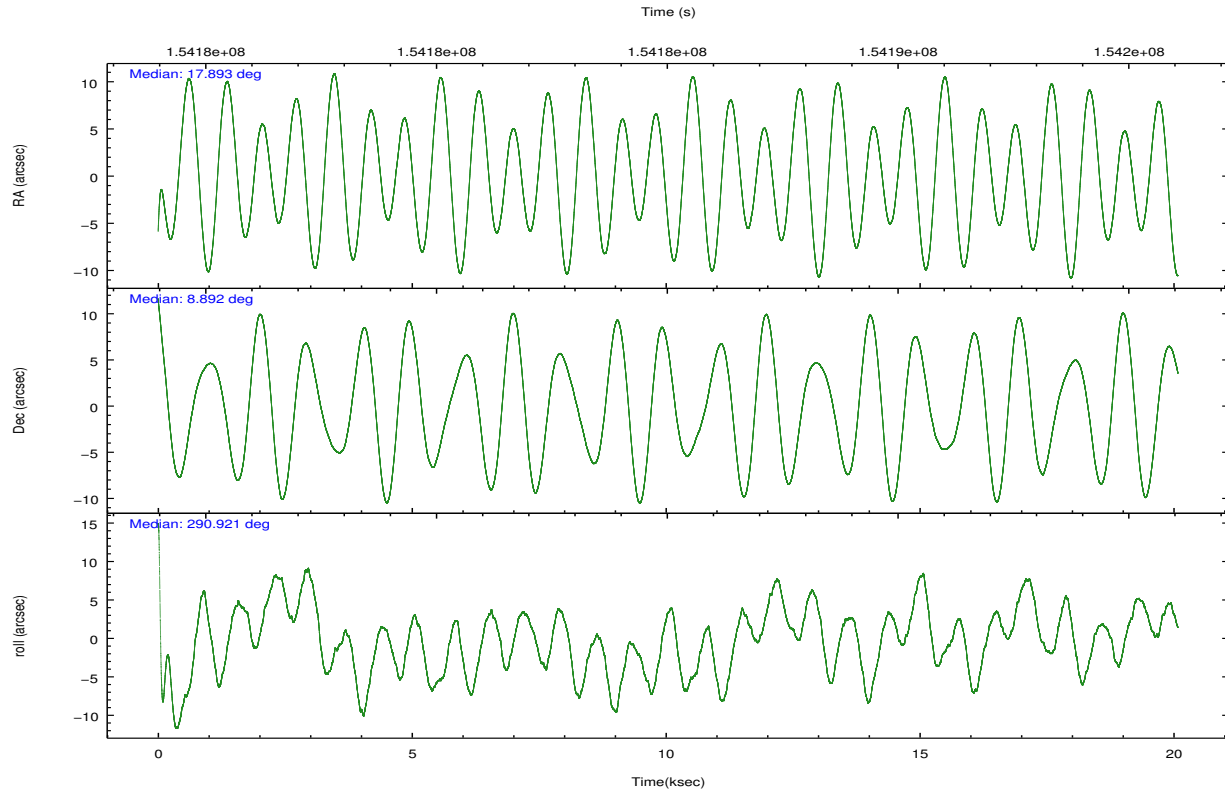
	ccd 0	ccd 1	ccd 2	ccd 3	ccd 6
grade 0 events	3431	3857	3601	4937	3460
	3%	4%	3%	4%	3%
grade 1 events	46	44	52	56	36
	0%	0%	0%	0%	0%
grade 2 events	2215	2124	2169	2038	1949
	2%	2%	2%	2%	2%
grade 3 events	1172	1224	1097	1141	1211
	1%	1%	1%	1%	1%
grade 4 events	1023	1170	1046	1112	1071
	1%	1%	1%	1%	1%
grade 5 events	3174	3476	3056	3667	3641
	3%	3%	3%	3%	3%
grade 6 events	1829	1962	1772	1775	2089
	2%	2%	1%	1%	2%
grade 7 events	75519	76551	87901	84911	80228
	85%	84%	87%	85%	85%

2.2 Compared Parameters

Parameter	Planned	Actual	Parameter	Planned	Actual
Instrument	ACIS	ACIS	Obspar format version number	7	7
Detector	ACIS-01236	ACIS-01236	Obspar file type	PREDICTED	ACTUAL
Grating	NONE	NONE	Obspar update status	NONE	UPDATED
Data mode	VFAINT	VFAINT	Number of optional ACIS chips dropped	0	0
Observation mode	POINTING	POINTING	On-chip summing requested	N	N
[deg] Pointing RA	17.871423	17.89300498837559	Subarray requested	NONE	NONE
[deg] Pointing Dec	8.909141	8.891958401617359	Alternating exposures requested	N	N
[deg] Pointing Roll	290.717418	290.9227824090581	[s] Primary exposure time	0.000000	3.1
[mm] SIM focus pos	-0.782348	-0.7809083437167272			
[mm] SIM defocus	0	0.001439871863259334			
[mm] SIM translation stage pos	-227.742463	-227.734108438797			
[mm] SIM translation stage offset	-5.85	-5.858344564132665			
[s] Observation start time (MET)	154175154.184000	154174367.95494			
Observation start date	2002-11-20T10:24:50	2002-11-20T10:12:47			
[s] Observation end time (MET)	154195054.184000	154195427.60581			
Observation end date	2002-11-20T15:56:30	2002-11-20T16:03:47			
Read mode	TIMED	TIMED			

2.3 Aspect



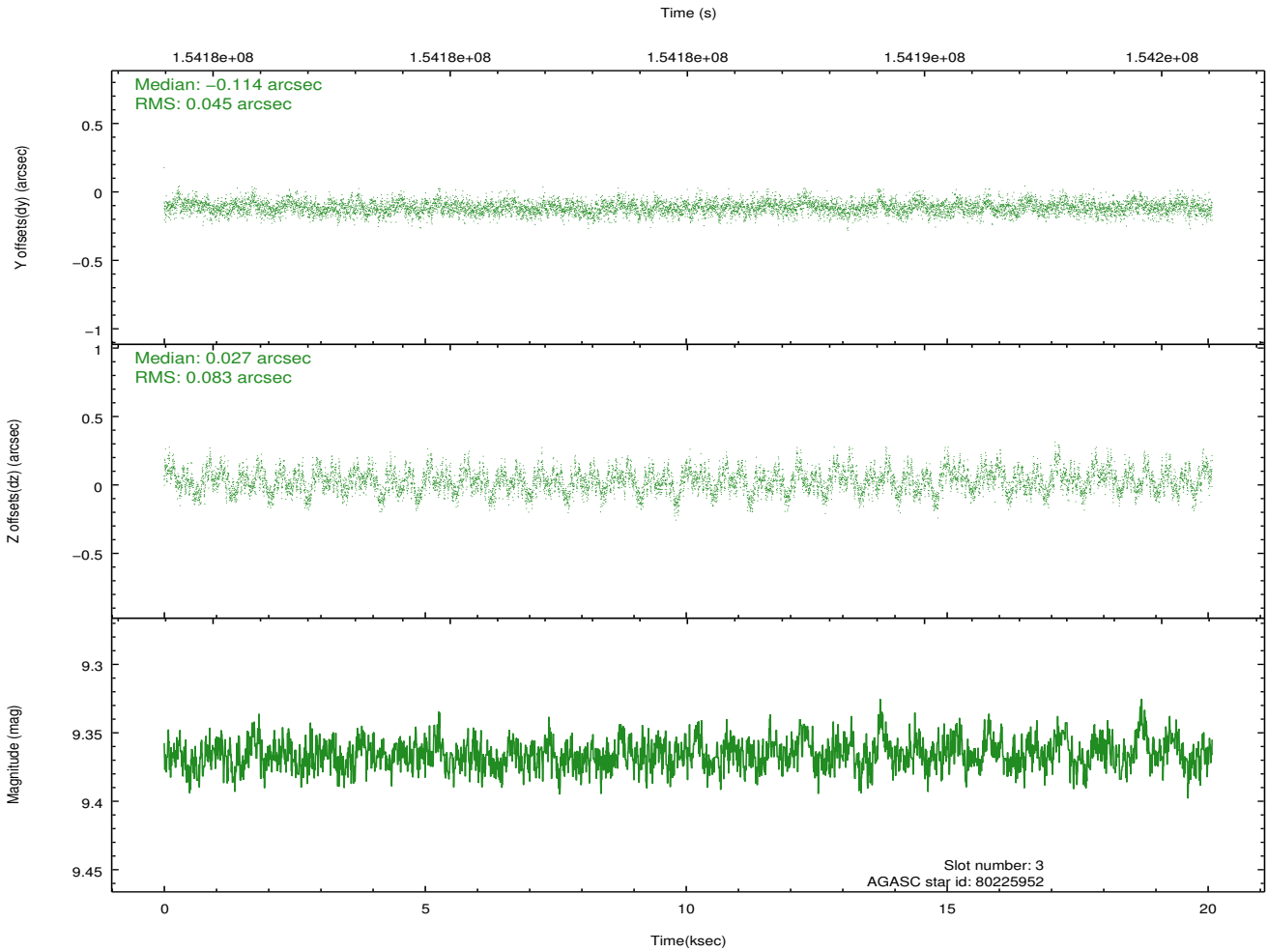
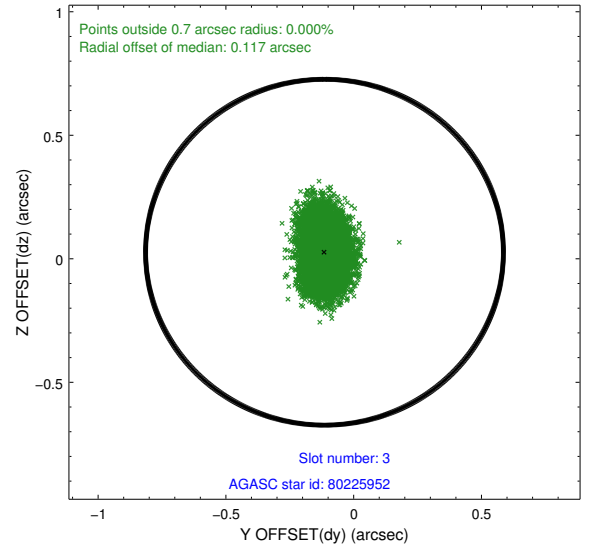
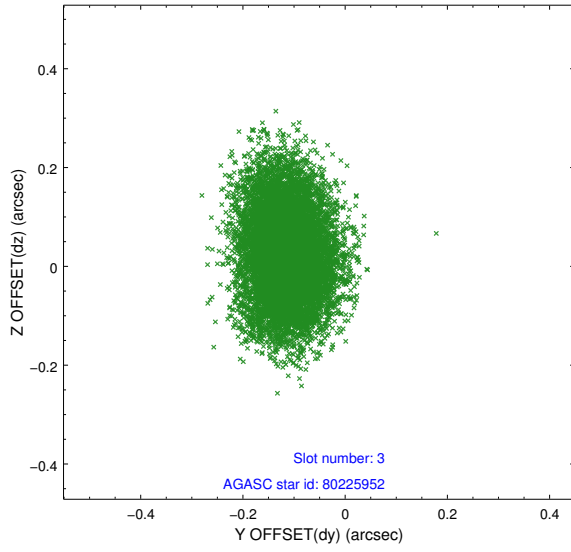


Slot Statistics

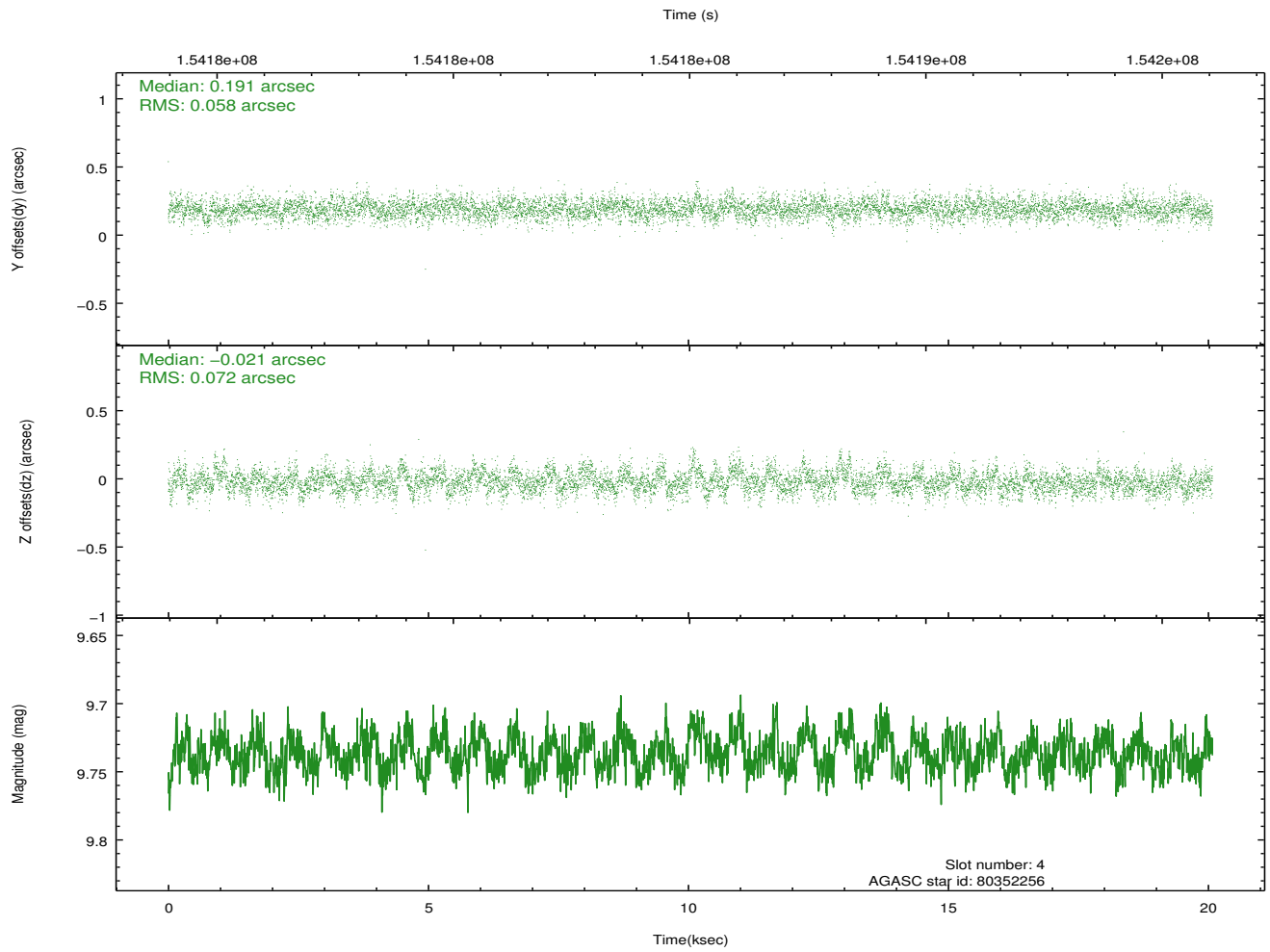
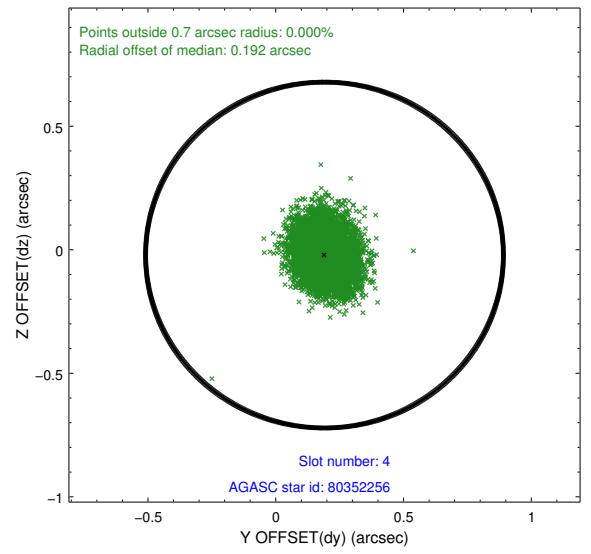
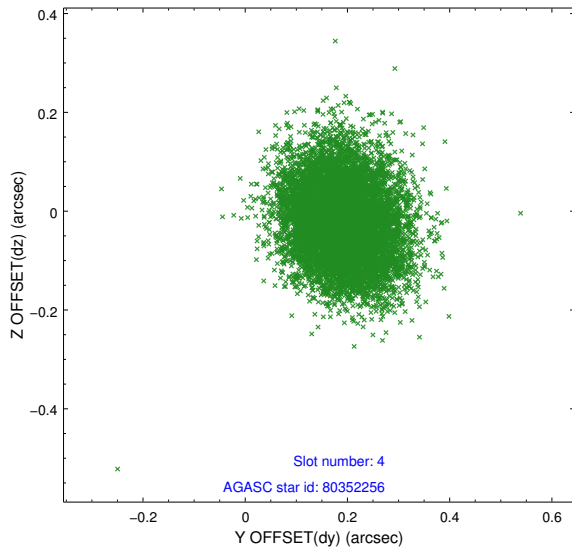
slot	status	id	mag	n_pts	med_dy	med_dz	dr1	dr2	ra	dec	mean_y	mean_z
0	FID	ACIS-I-1	7.24	4898	0.039	0.012	0.006	0.011	0.000000	0.000000	937.09	-951.03
1	FID	ACIS-I-5	7.24	4898	-0.127	0.073	0.007	0.012	0.000000	0.000000	-1811.06	946.43
2	FID	ACIS-I-6	7.25	4898	-0.003	-0.014	0.008	0.013	0.000000	0.000000	402.42	1591.04
3	GUIDE	80225952	9.37	9792	-0.114	0.027	0.100	0.169	17.334916	9.019697	-1047.11	-1642.70
4	GUIDE	80352256	9.74	9783	0.191	-0.021	0.098	0.161	18.050877	8.946658	100.71	644.79
5	GUIDE	80354600	9.61	9768	0.023	0.132	0.099	0.166	18.031643	8.309021	2223.93	-229.94
6	GUIDE	80354640	7.46	9797	-0.133	-0.000	0.060	0.101	18.424340	8.974614	475.10	1923.12
7	GUIDE	80357000	9.45	9793	0.033	-0.132	0.090	0.146	18.090538	8.536646	1531.40	256.10

2.4 Star Slots

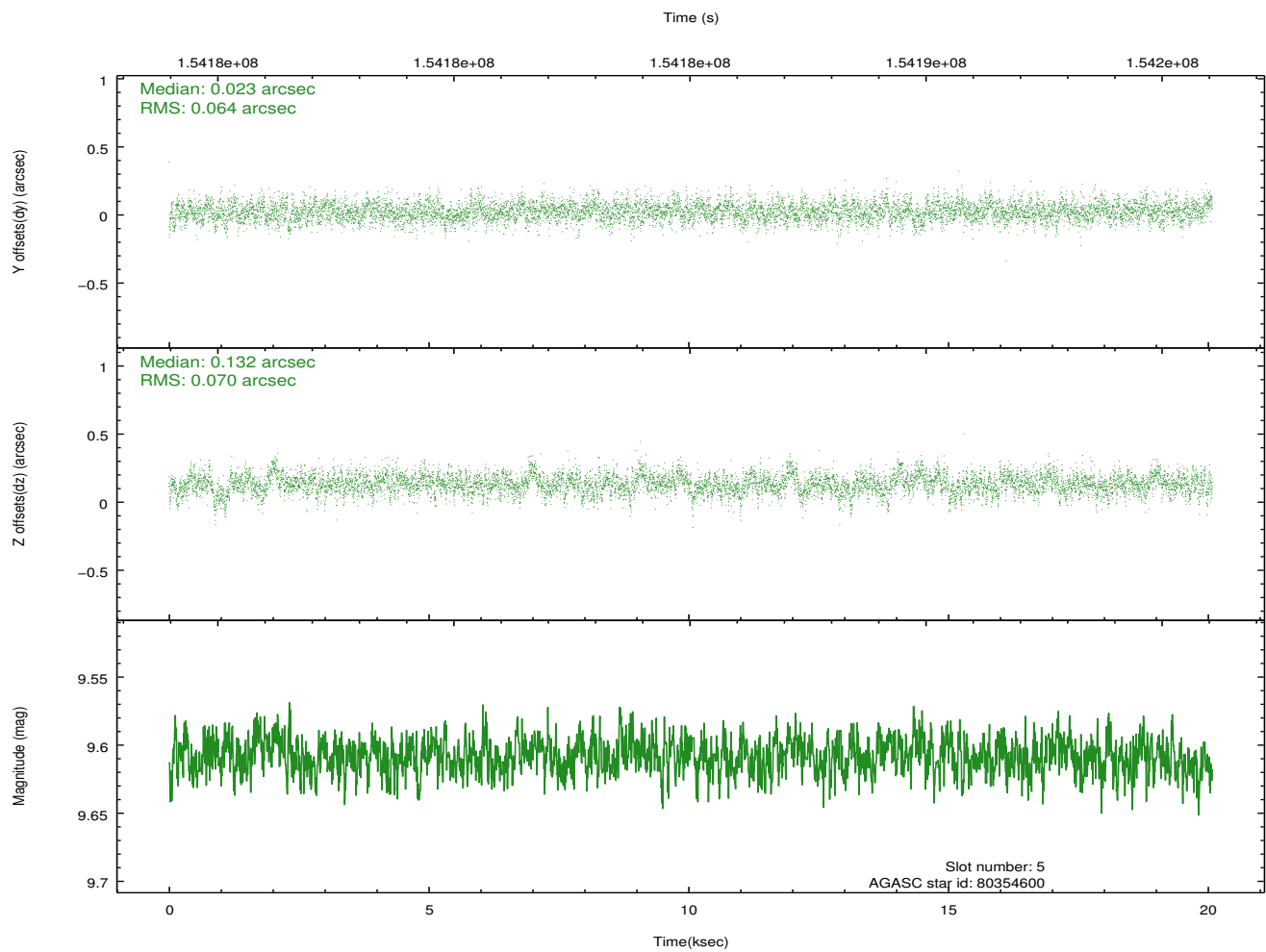
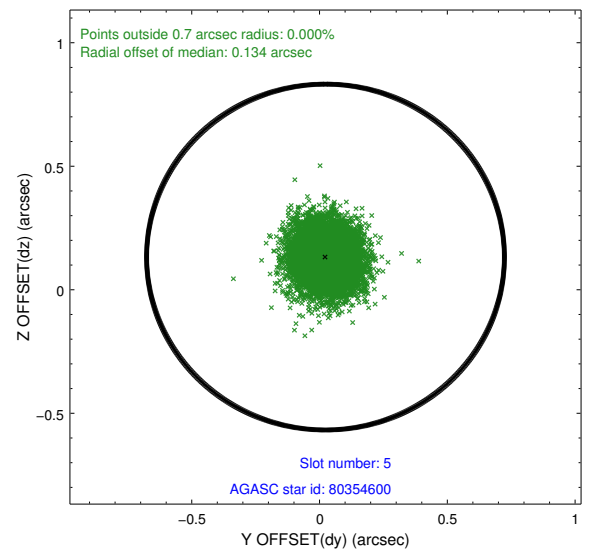
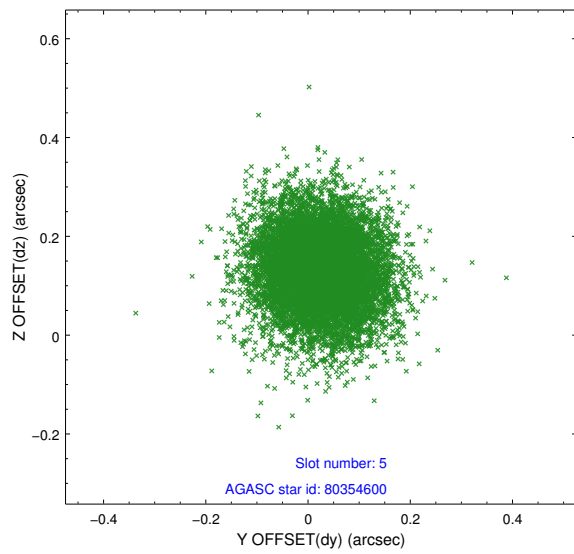
2.4.1 Slot 3



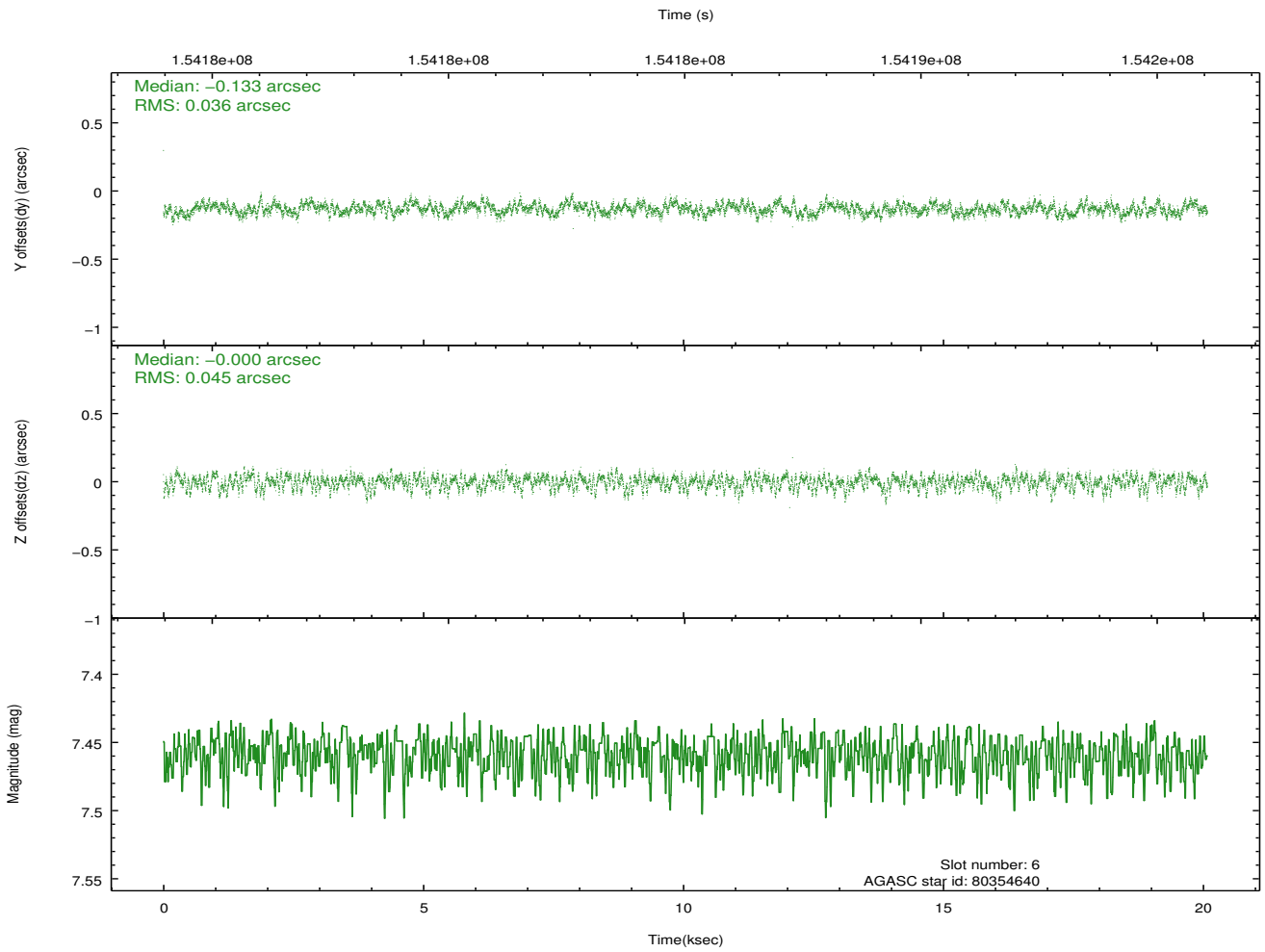
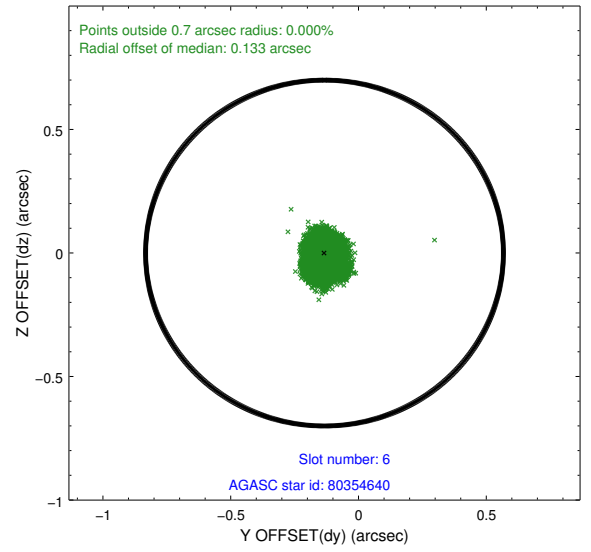
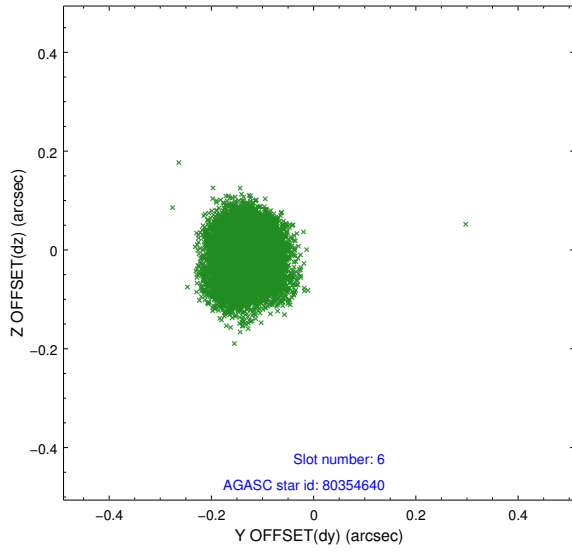
2.4.2 Slot 4



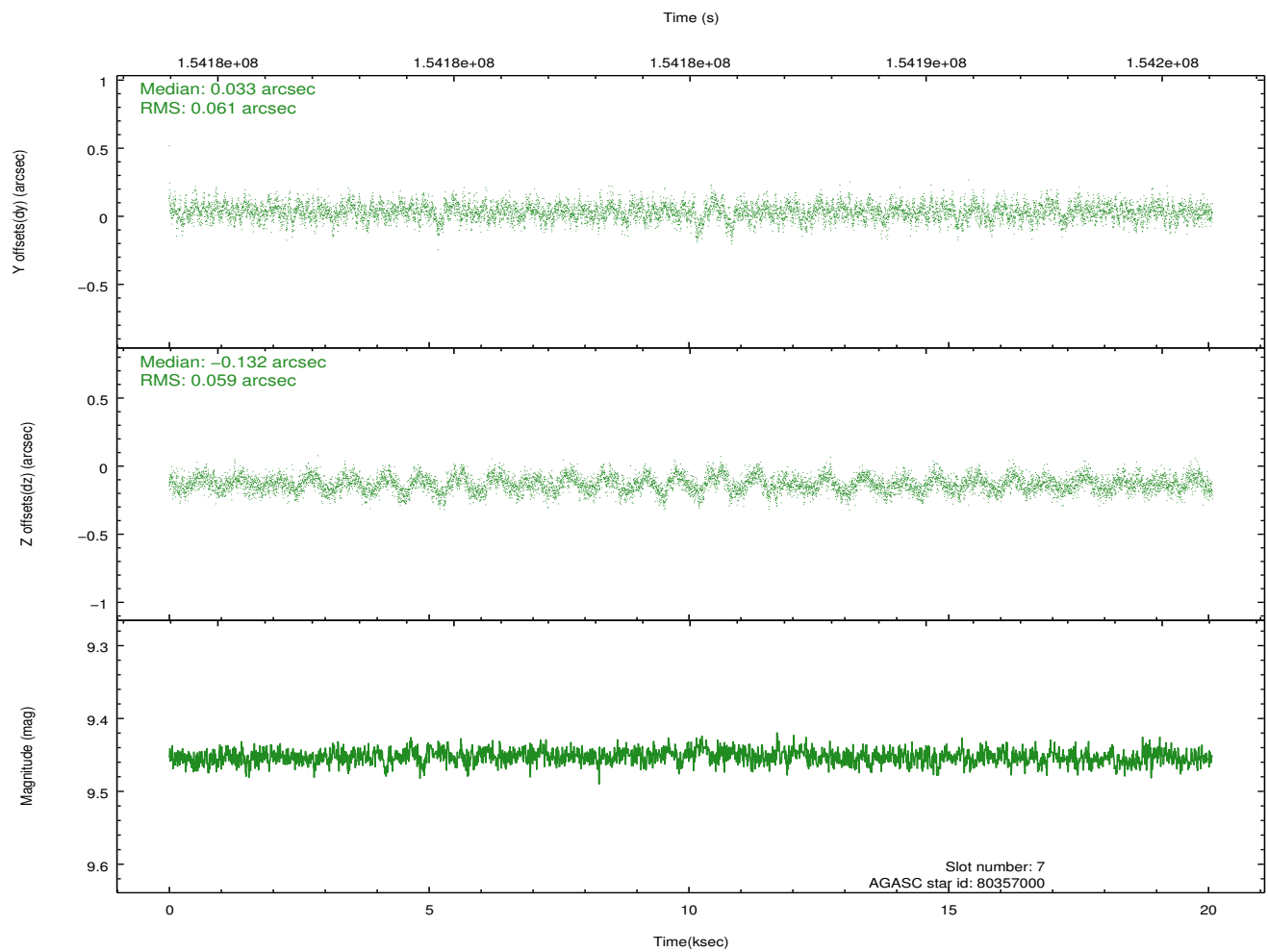
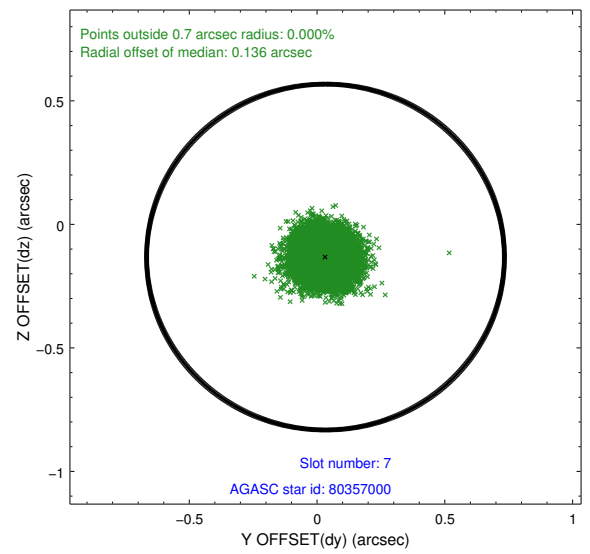
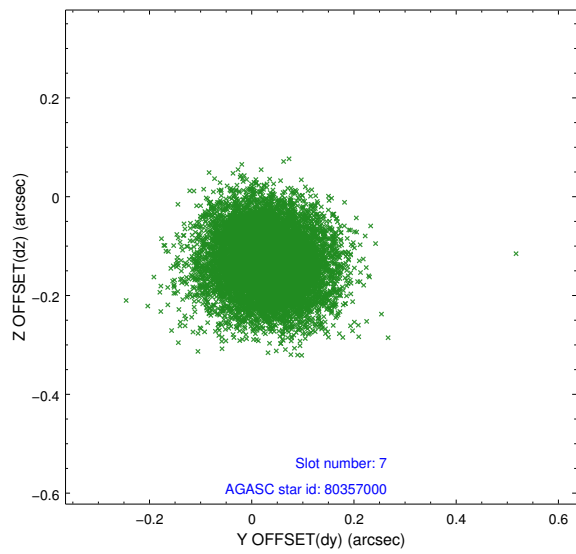
2.4.3 Slot 5



2.4.4 Slot 6

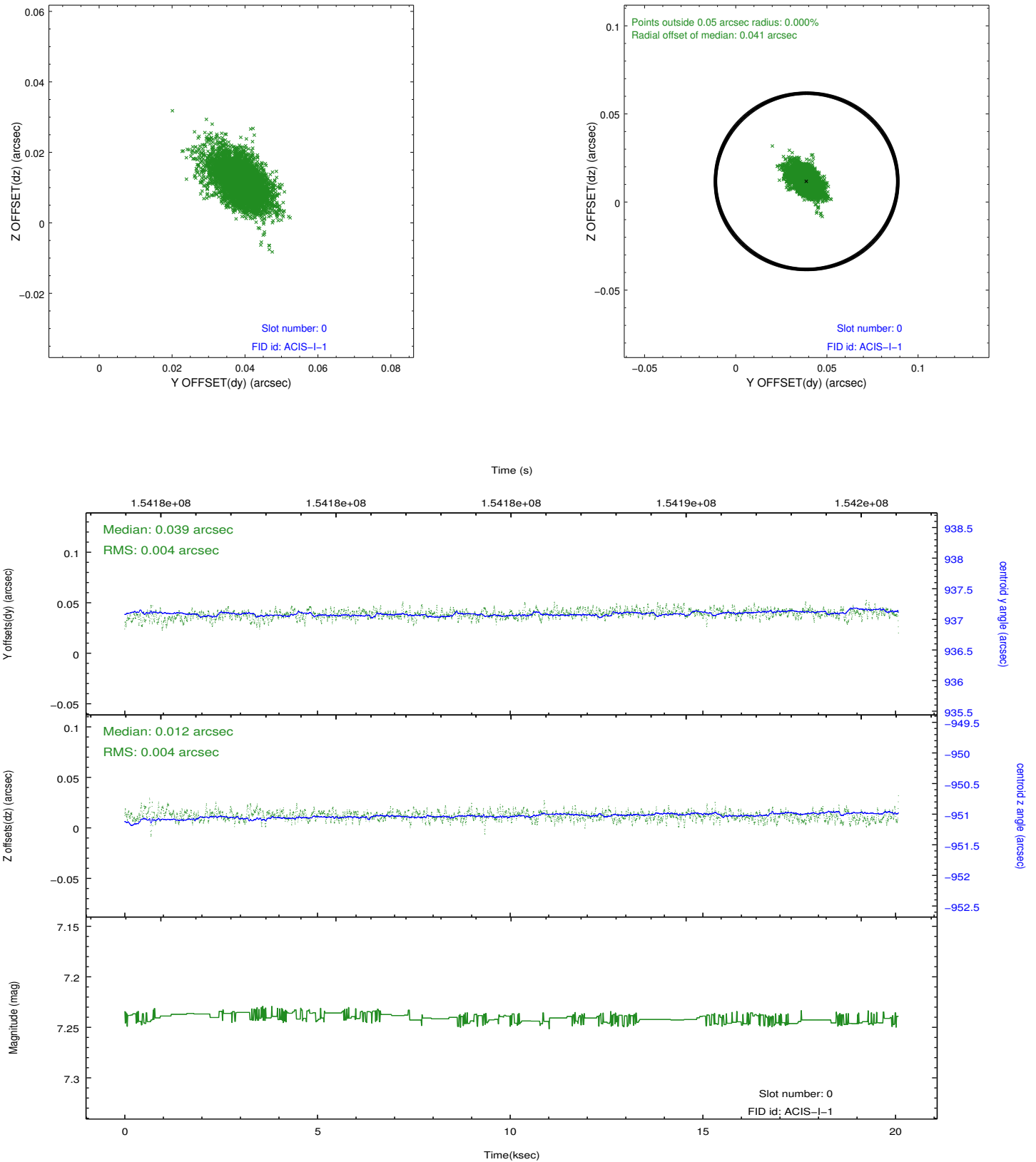


2.4.5 Slot 7

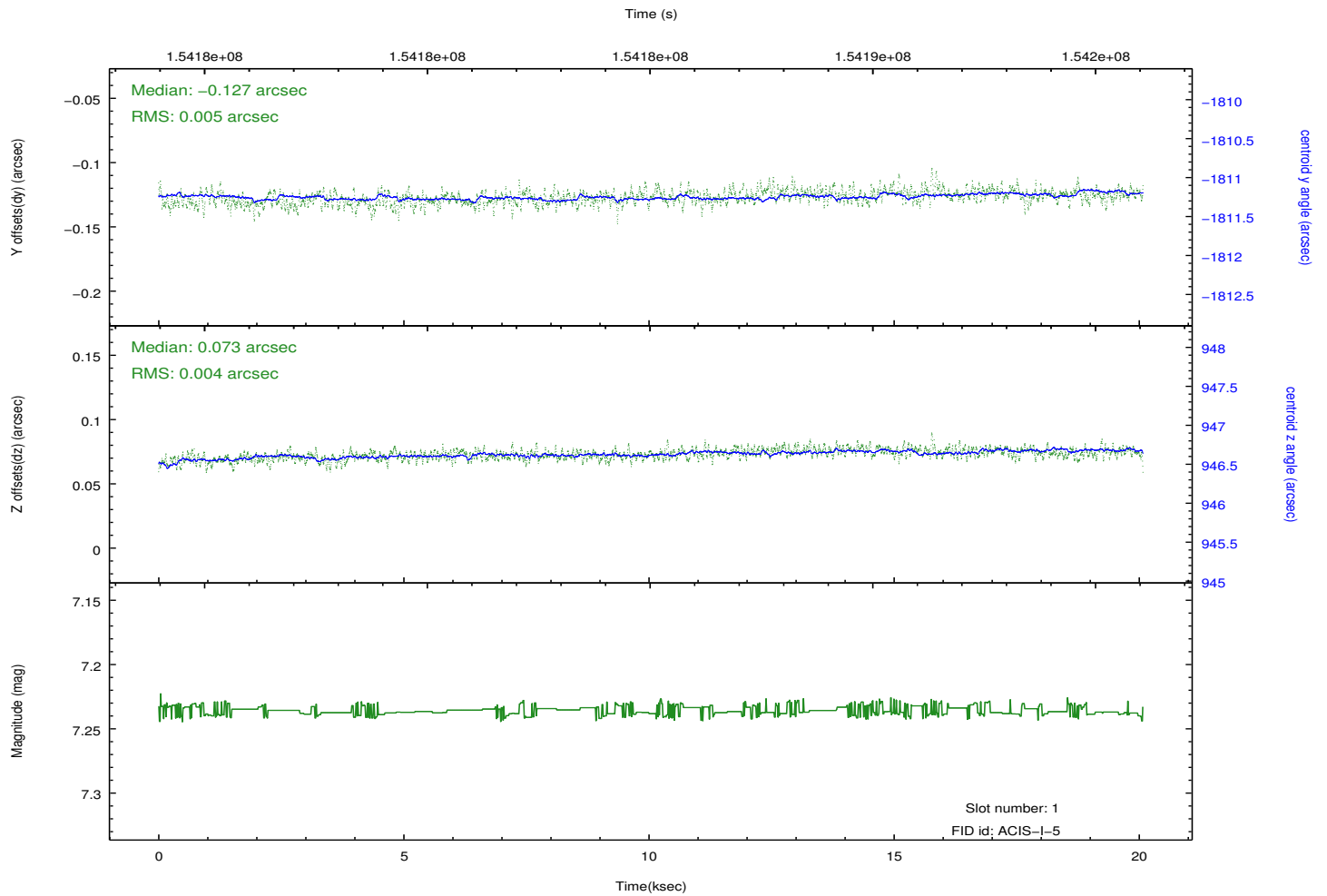
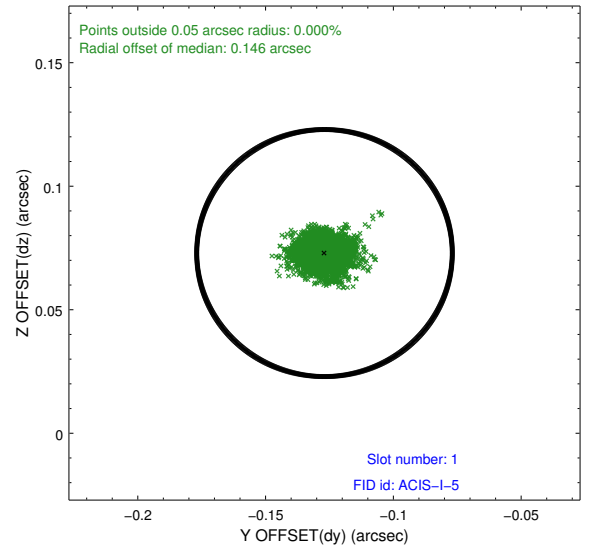
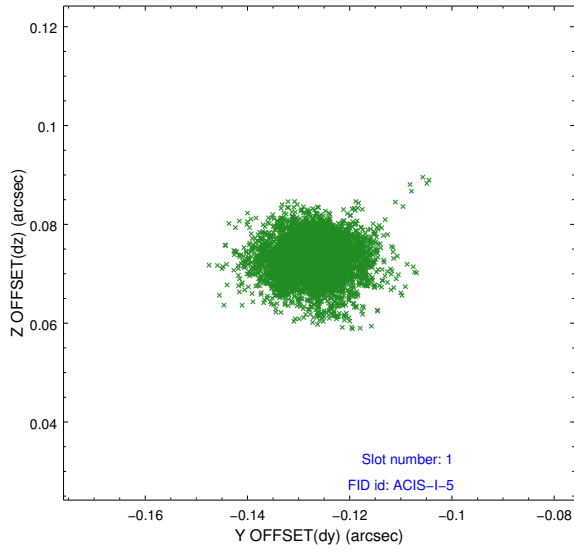


2.5 FID Slots

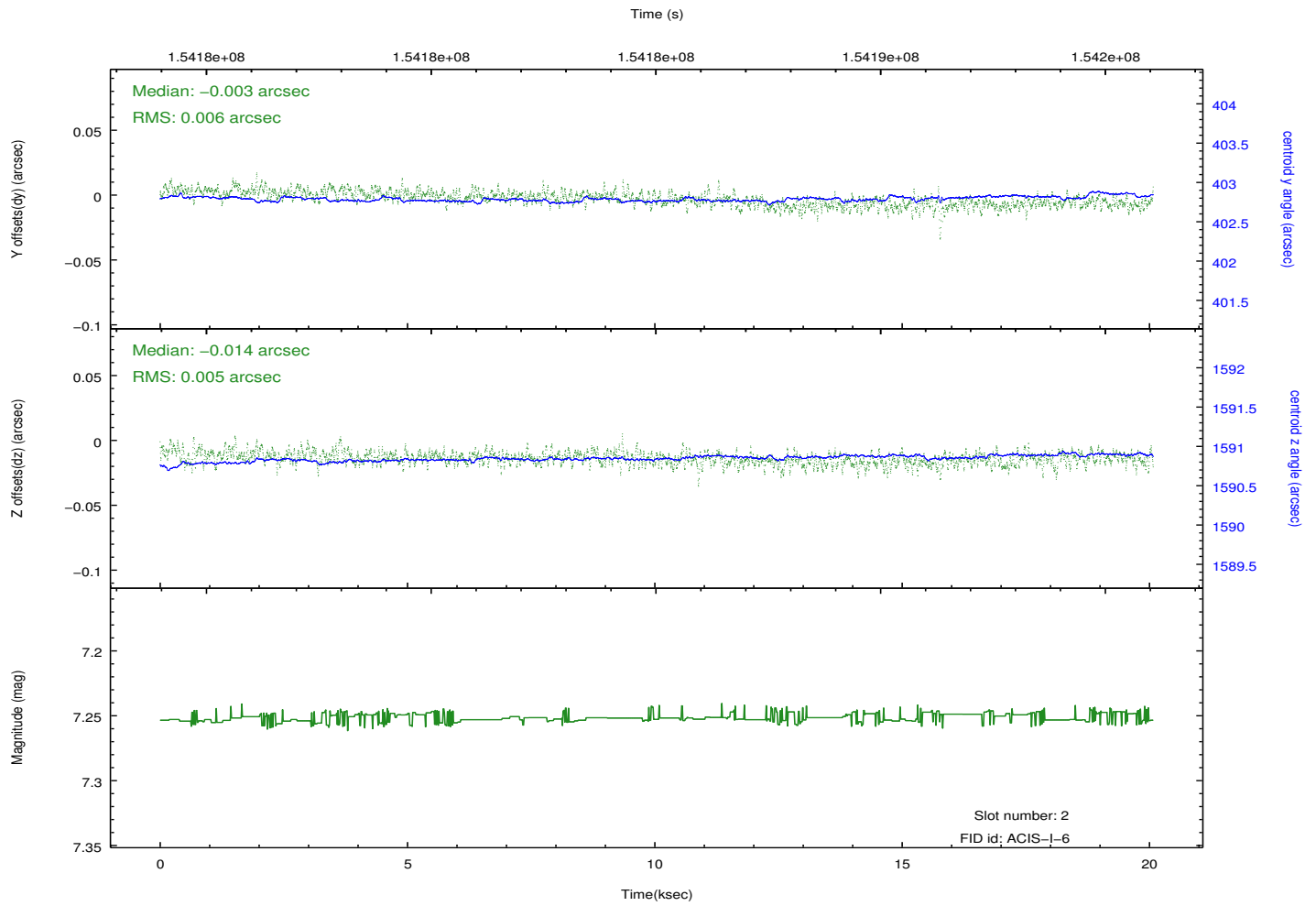
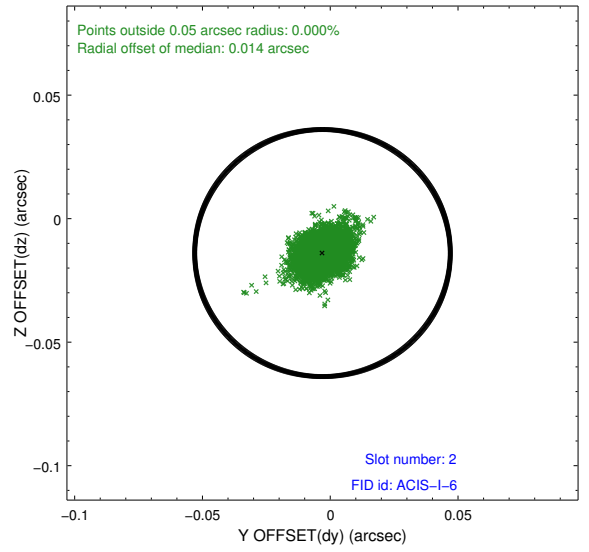
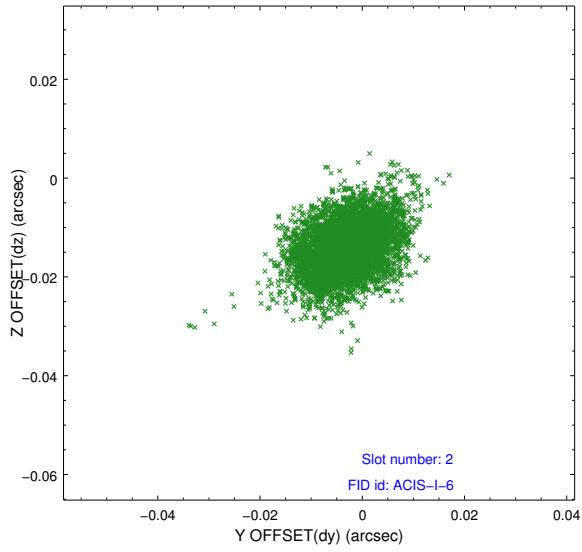
2.5.1 Slot 0



2.5.2 Slot 1



2.5.3 Slot 2



A Summary

A.1 Status

V&V Scientist	Jen Lauer
V&V Date (YYYY-MM-DD)	2012.10.26
V&V Edition	1
V&V Disposition and Status	OK
V&V Charge Time	19.644

A.2 Comments