

V&V Reference Report

L2 ASCDS Version : 8.4.5

Observation 326 - L2 Version 4
Chandra X-Ray Center

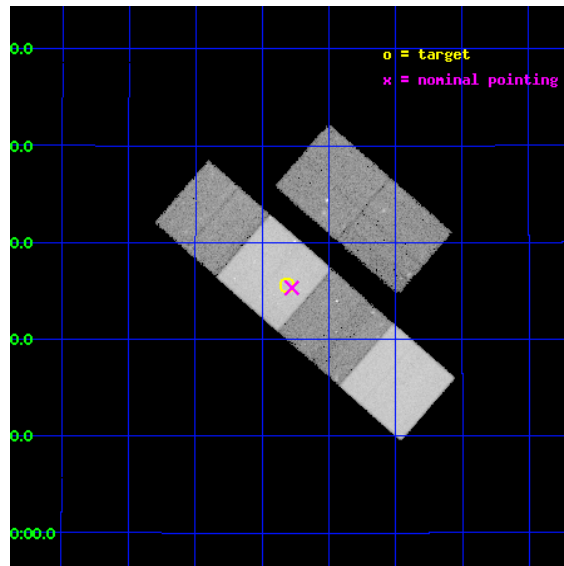
L2 Processing Date : Aug 30 2012

Contents

1	Front	2
2	OBI	3
2.1	OBI	3
2.1.1	Images	3
2.1.2	Bias	3
2.1.3	Parameters	4
2.1.4	Events	4
2.2	Compared Parameters	5
2.3	Aspect	6
2.4	Star Slots	9
2.4.1	Slot 3	9
2.4.2	Slot 4	10
2.4.3	Slot 5	11
2.4.4	Slot 6	12
2.4.5	Slot 7	13
2.5	FID Slots	14
2.5.1	Slot 0	14
2.5.2	Slot 1	15
2.5.3	Slot 2	16
A	Summary	17
A.1	Status	17
A.2	Comments	17

1 Front

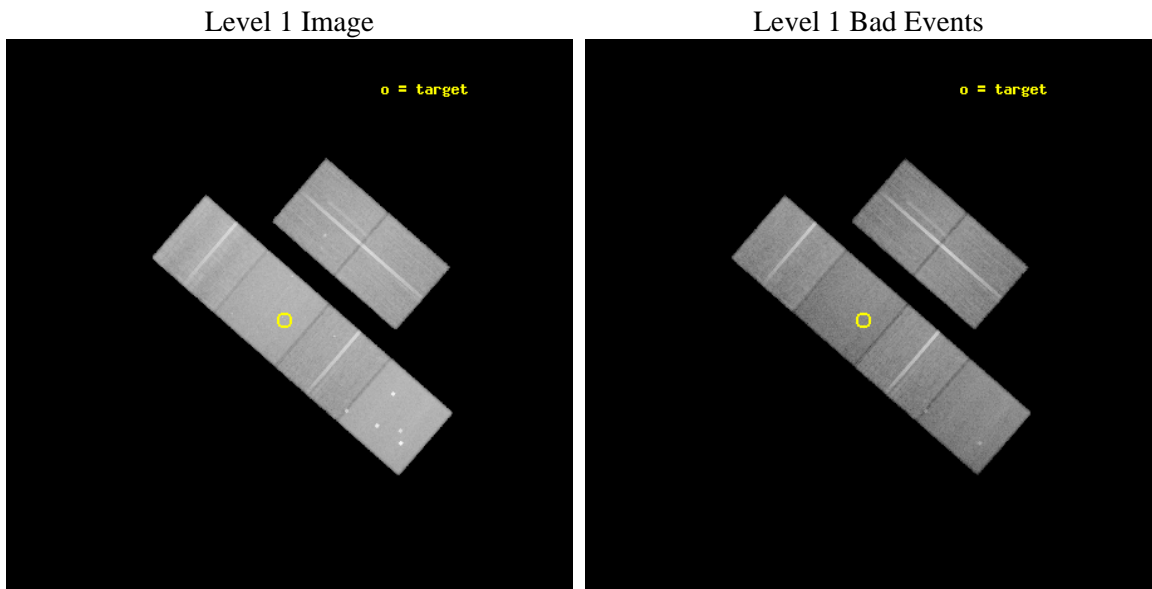
seq_num	800064	Sequence number
obs_id	326	Observation id
title	BRIGHT ELLIPTICAL GALAXIES AND HIGH REDSHIFT CLUSTERS	Proposal tit
observer	Dr. Richard Mushotzky	Principal investigator
object	3C 324	Source name
dtycycle	0	
cycle	P	events from which exps? Prim/Second/Both
ra_targ	237.45337	Observer's specified target RA [deg]
dec_targ	21.427194	Observer's specified target Dec [deg]
ra_nom	237.4441326995	Nominal RA [deg]
dec_nom	21.422131706708	Nominal Dec [deg]
roll_nom	221.07219707415	Nominal Roll [deg]
revision	4	Processing version of data
ontime	42723.200039774	Sum of GTIs [s]
livetime	42182.213156048	Livetime [s]
ontime2	42723.200039774	Sum of GTIs [s]
ontime3	42719.959079534	Sum of GTIs [s]
ontime5	42723.200039774	Sum of GTIs [s]
ontime6	42723.200039774	Sum of GTIs [s]
ontime7	42723.200039774	Sum of GTIs [s]
ontime8	42716.718089372	Sum of GTIs [s]
l2events	448202	Number of level 2 events



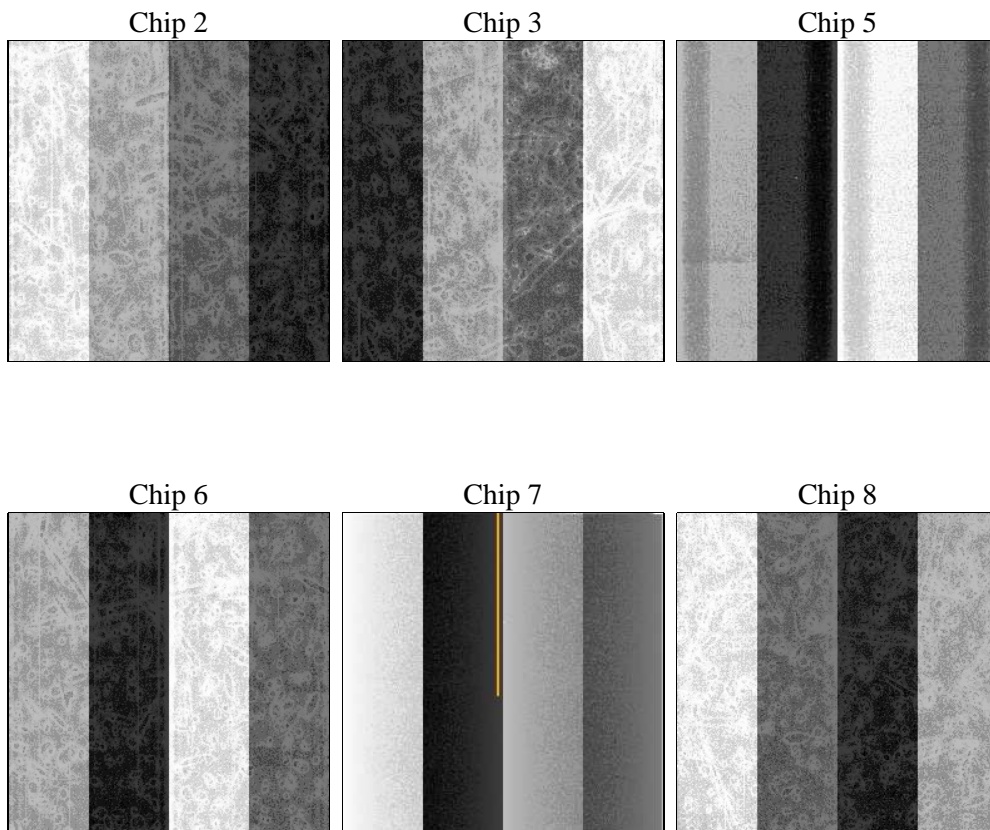
2 OBI

2.1 OBI

2.1.1 Images



2.1.2 Bias



2.1.3 Parameters

obi_num	0	Obi number	sched_exp_time	42969.754000	[s] Scheduled observation exposure time
ascdsver	8.4.5	Processing system revision	ontime	42723.200039774	Sum of GTIs [s]
caldbver	4.5.1.1	 	ontime2	42723.200039774	Sum of GTIs [s]
date	2012-08-29T23:30:29	Date and time of file creation	ontime3	42719.959079534	Sum of GTIs [s]
revision	4	Processing version of data	ontime5	42723.200039774	Sum of GTIs [s]
			ontime6	42723.200039774	Sum of GTIs [s]
			ontime7	42723.200039774	Sum of GTIs [s]
			ontime8	42716.718089372	Sum of GTIs [s]
			l1events	1975638	Number of level 1 events

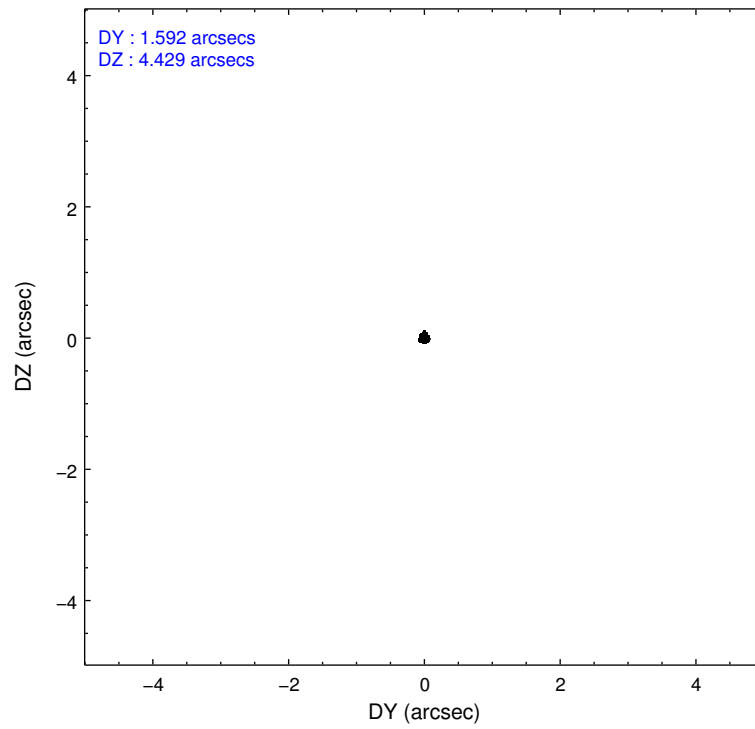
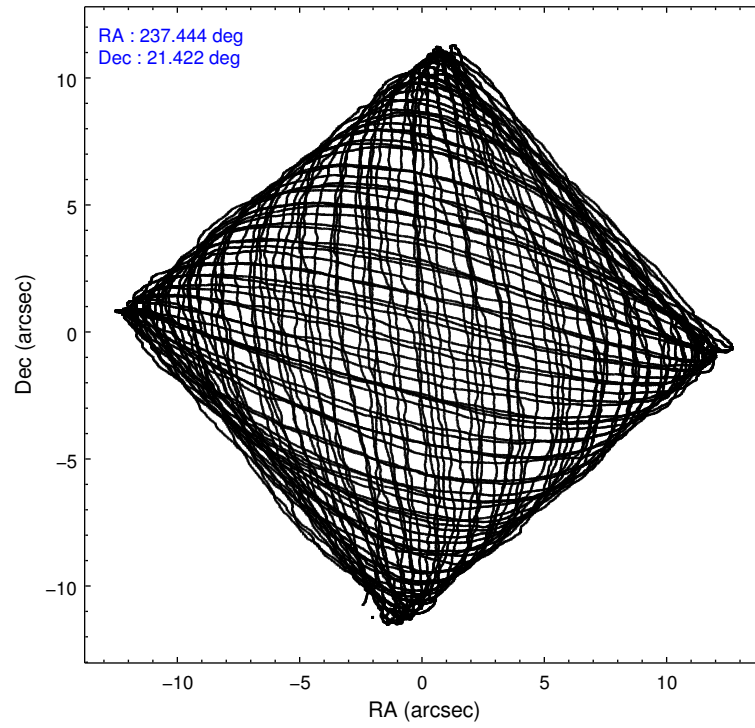
2.1.4 Events

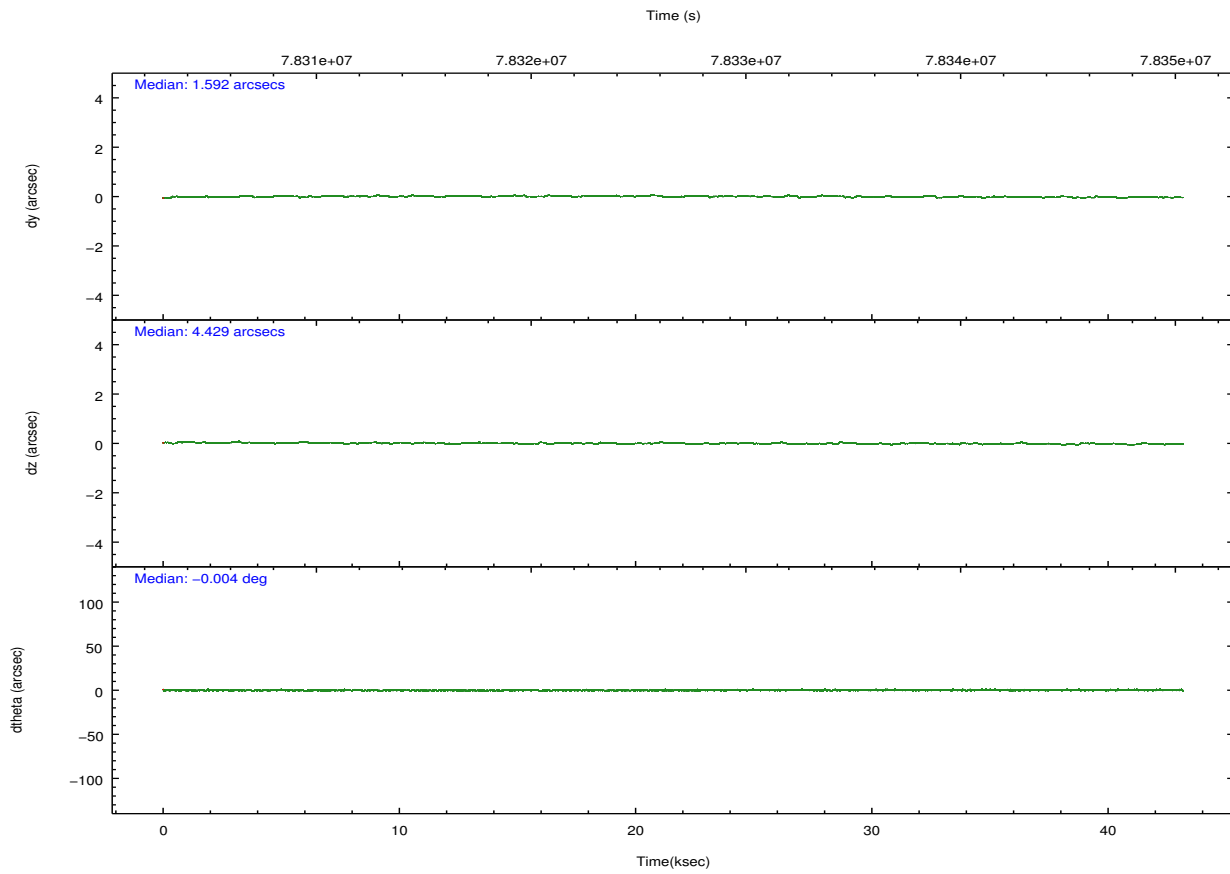
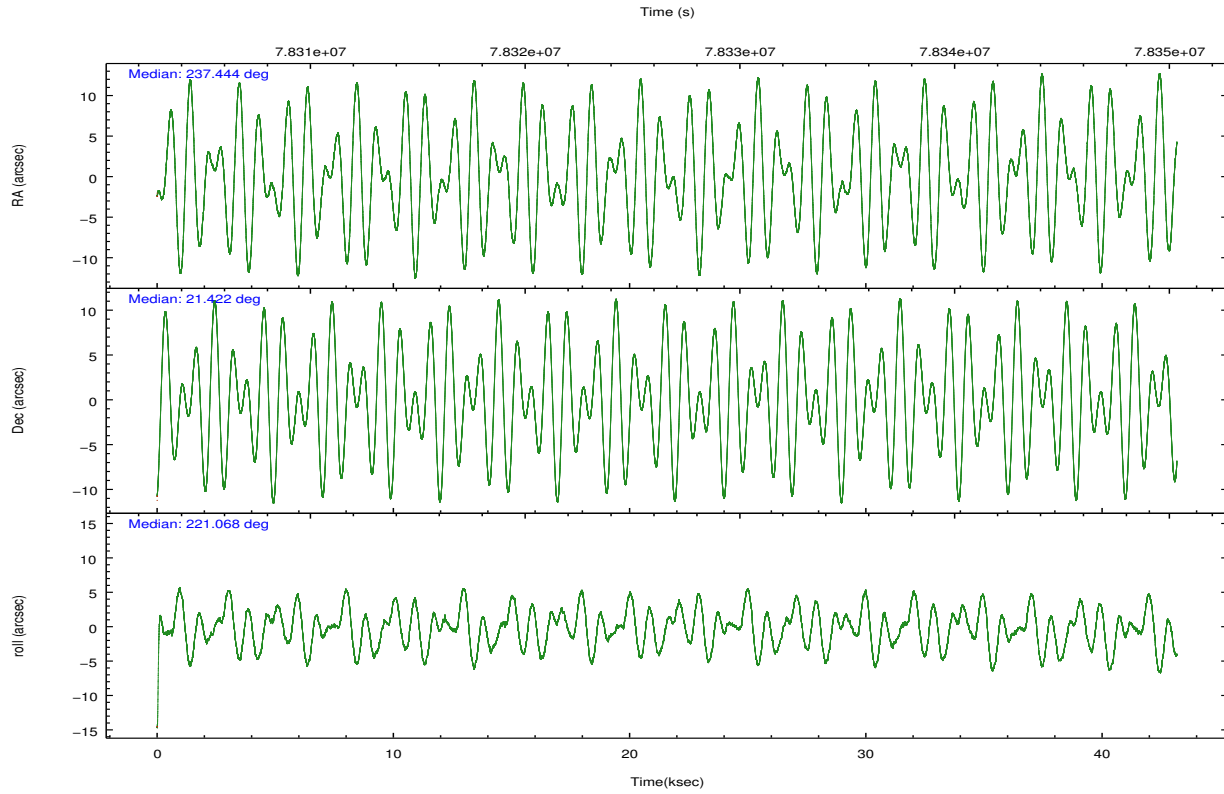
	ccd 2	ccd 3	ccd 5	ccd 6	ccd 7	ccd 8		ccd 2	ccd 3	ccd 5	ccd 6	ccd 7	ccd 8
level 1 events	292629	280664	396183	285902	351721	368539	grade 0 events	13209	14264	38628	14186	18265	26764
rejected events	261494	249122	193864	252935	189425	283219		4%	5%	9%	4%	5%	7%
rejected %	89%	88%	48%	88%	53%	76%	grade 1 events	119	139	1178	132	329	234
								0%	0%	0%	0%	0%	0%
							grade 2 events	6843	6139	53297	6545	32429	16849
								2%	2%	13%	2%	9%	4%
							grade 3 events	2903	2839	9261	3196	14952	10676
								0%	1%	2%	1%	4%	2%
							grade 4 events	2928	2978	9309	3035	14717	9698
								1%	1%	2%	1%	4%	2%
							grade 5 events	8794	9466	28010	10334	31441	13610
								3%	3%	7%	3%	8%	3%
							grade 6 events	5255	5329	91846	6005	81959	21338
								1%	1%	23%	2%	23%	5%
							grade 7 events	252578	239510	164654	242469	157629	269370
								86%	85%	41%	84%	44%	73%

2.2 Compared Parameters

Parameter	Planned	Actual	Parameter	Planned	Actual
Instrument	ACIS	ACIS	Obspar format version number	7	7
Detector	ACIS-235678	ACIS-235678	Obspar file type	PREDICTED	ACTUAL
Grating	NONE	NONE	Obspar update status	NONE	UPDATED
Data mode	VFAINT	VFAINT	Number of optional ACIS chips dropped	0	0
Observation mode	POINTING	POINTING	On-chip summing requested	N	N
[deg] Pointing RA	237.453584	237.4441326994974	Subarray requested	NONE	NONE
[deg] Pointing Dec	21.448091	21.42213170670789	Alternating exposures requested	N	N
[deg] Pointing Roll	220.912125	221.0721970741542	[s] Primary exposure time	0.000000	3.2
[mm] SIM focus pos	-0.684267	-0.6828225247311905			
[mm] SIM defocus	0	0.001444936568705701			
[mm] SIM translation stage pos	-190.132523	-190.1425803651734			
[mm] SIM translation stage offset	0	0.01005778216563158			
[s] Observation start time (MET)	78305226.184000	78304759.271608			
Observation start date	2000-06-25T07:26:02	2000-06-25T07:19:19			
[s] Observation end time (MET)	78348196.184000	78348505.760721			
Observation end date	2000-06-25T19:22:12	2000-06-25T19:28:25			
Read mode	TIMED	TIMED			

2.3 Aspect



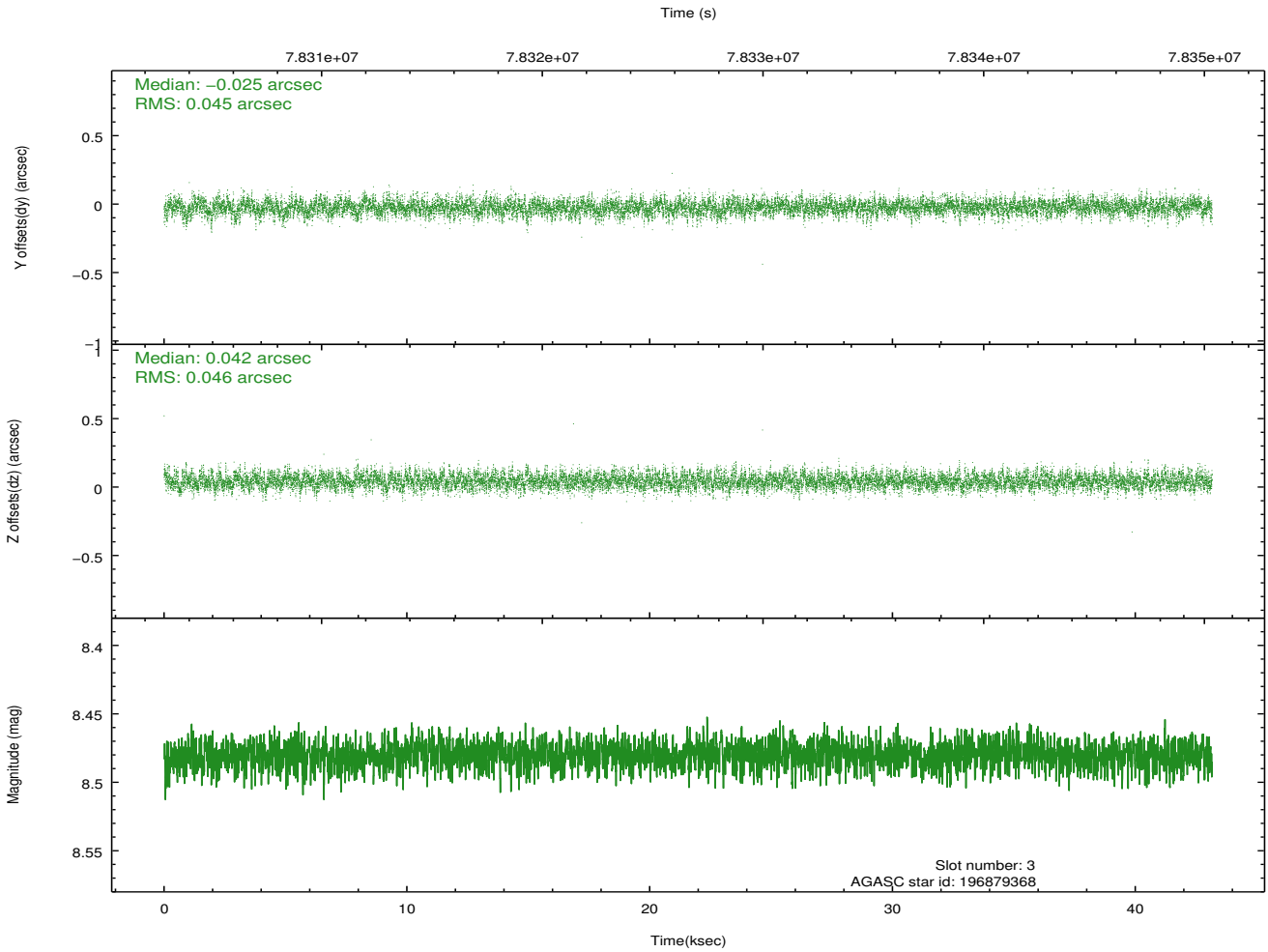
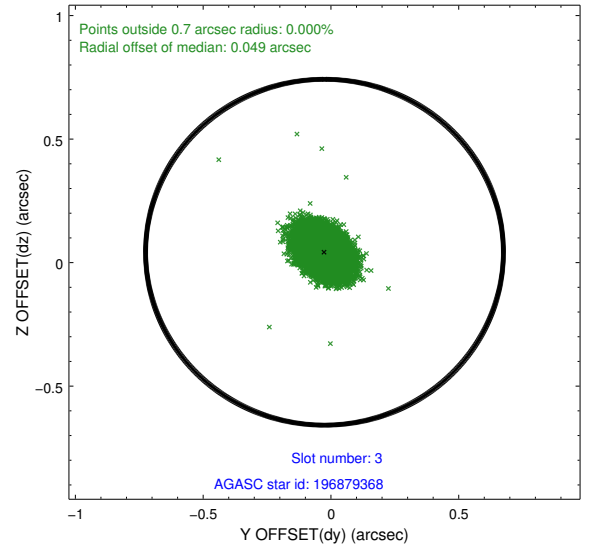
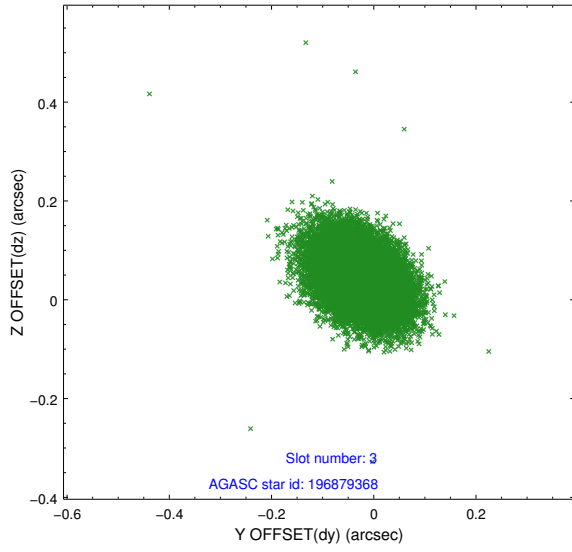


Slot Statistics

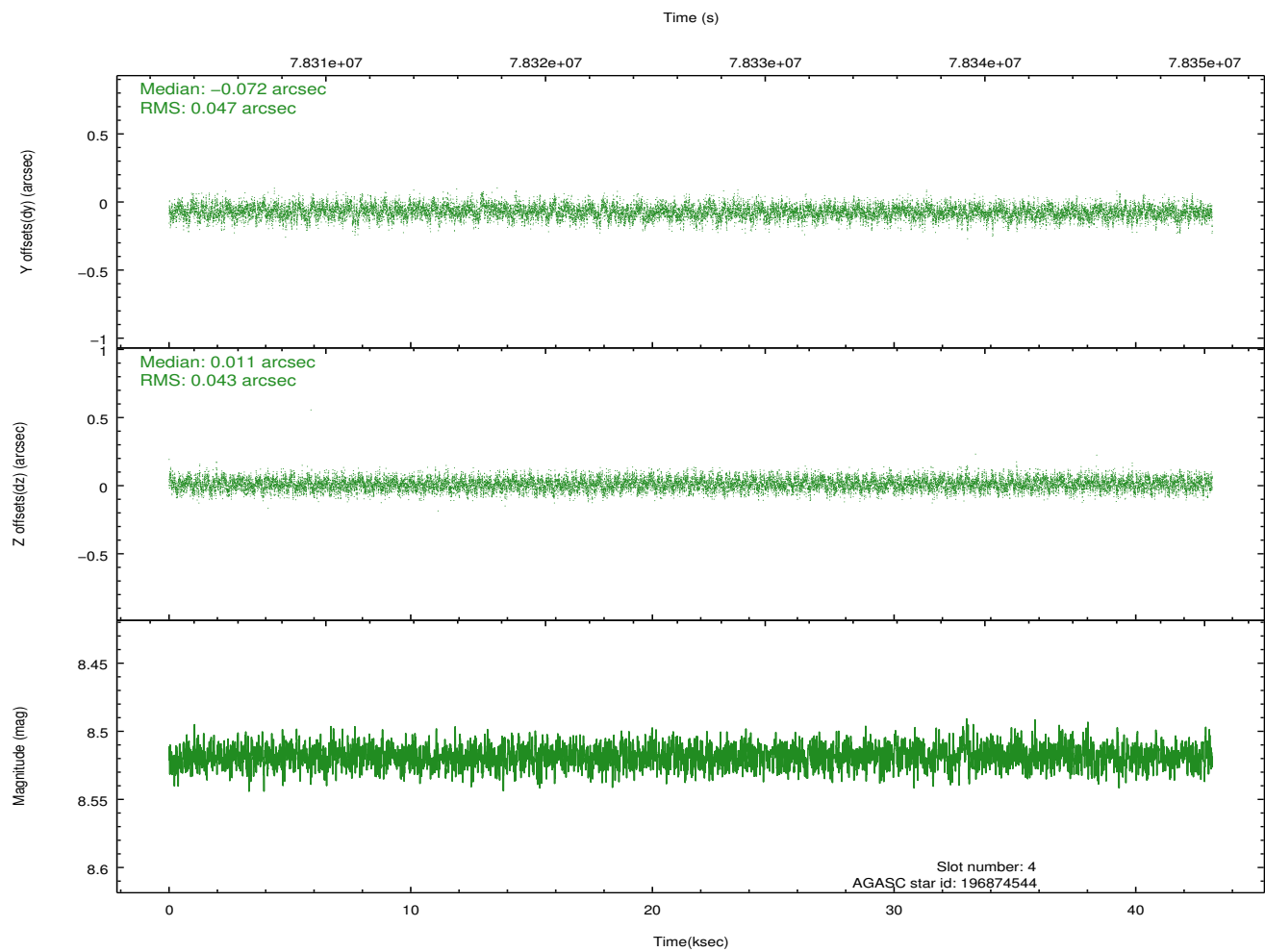
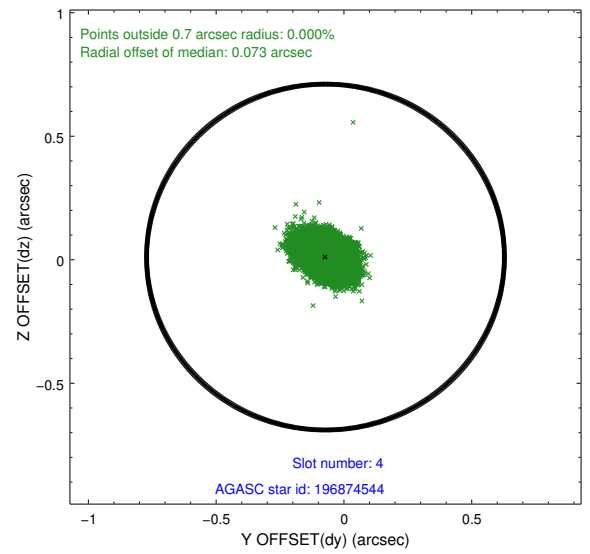
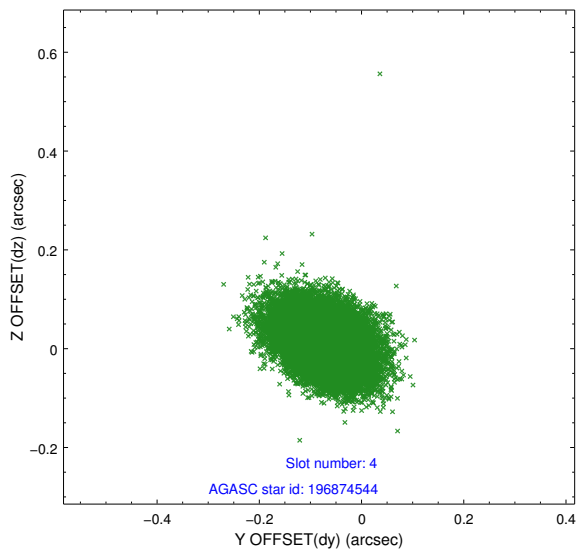
slot	status	id	mag	n_pts	med_dy	med_dz	dr1	dr2	ra	dec	mean_y	mean_z
0	FID	ACIS-S-2	7.11	10528	-0.023	-0.013	0.007	0.011	0.000000	0.000000	-754.23	-1725.48
1	FID	ACIS-S-4	7.21	10528	-0.008	0.015	0.006	0.010	0.000000	0.000000	2159.07	183.01
2	FID	ACIS-S-5	7.24	10528	0.001	0.007	0.007	0.011	0.000000	0.000000	-1807.03	176.70
3	GUIDE	196879368	8.48	21051	-0.025	0.042	0.067	0.112	237.615541	21.247872	61.93	900.58
4	GUIDE	196874544	8.52	21050	-0.072	0.011	0.066	0.110	238.079241	21.710413	-2201.91	653.68
5	GUIDE	196875104	8.80	21046	-0.078	0.050	0.074	0.123	238.085038	21.551779	-1844.52	1099.49
6	GUIDE	196751472	9.42	21042	0.076	-0.118	0.109	0.178	236.602985	21.373692	2326.27	-1670.73
7	GUIDE	196747144	9.45	21047	0.100	0.016	0.092	0.150	236.889093	21.275438	1836.99	-772.82

2.4 Star Slots

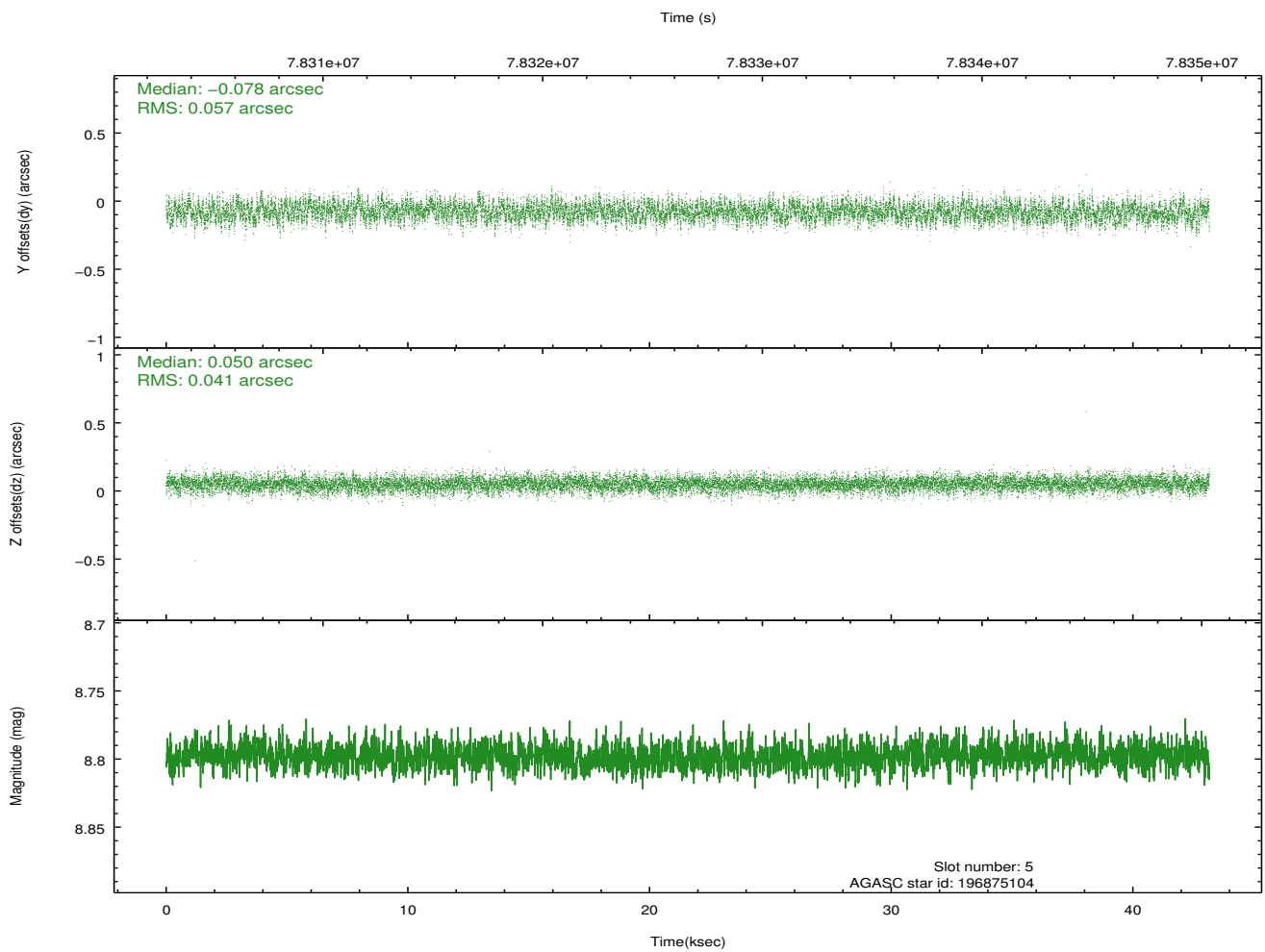
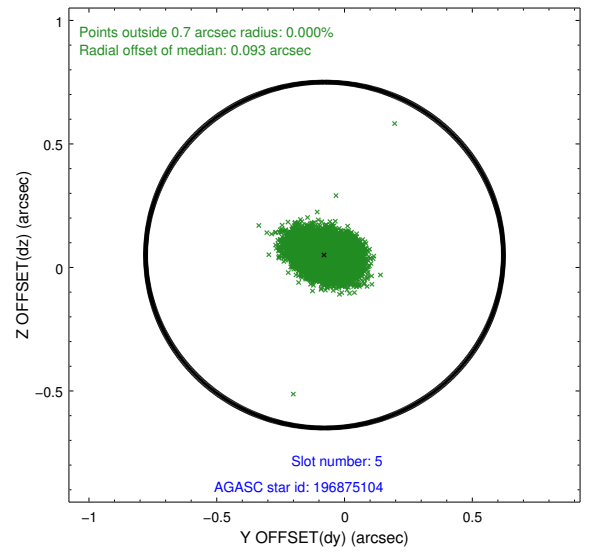
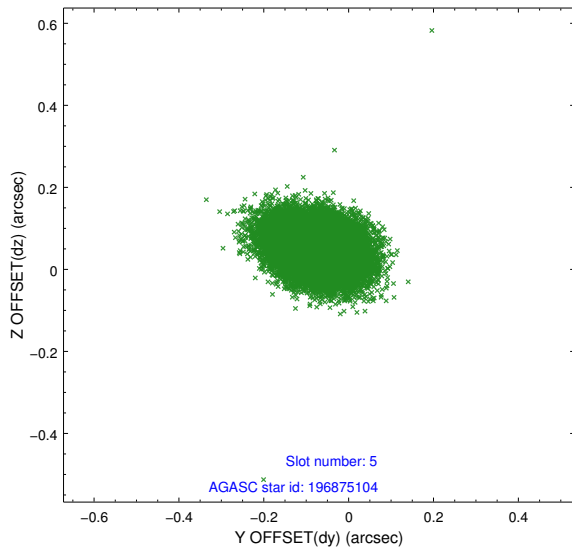
2.4.1 Slot 3



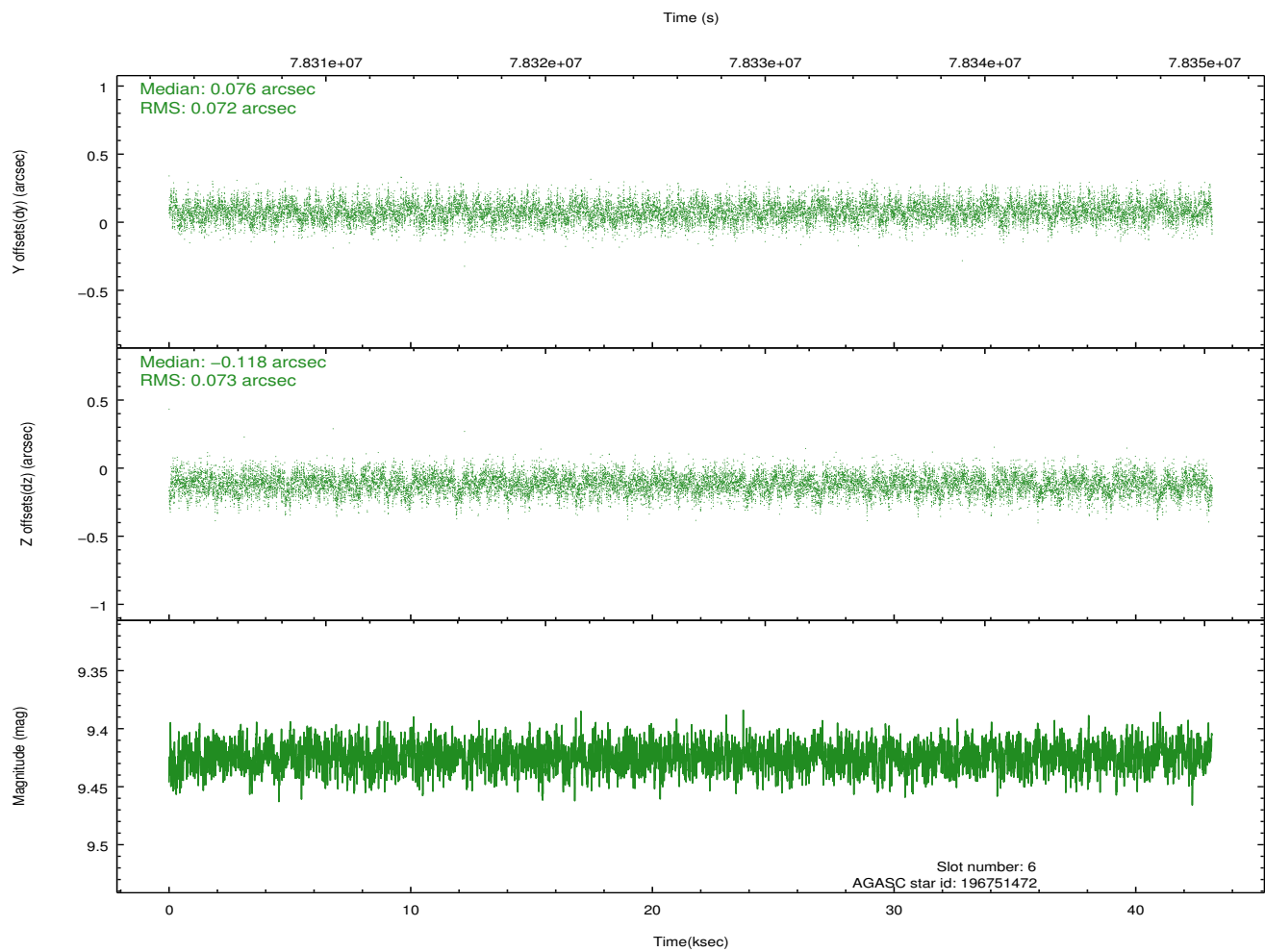
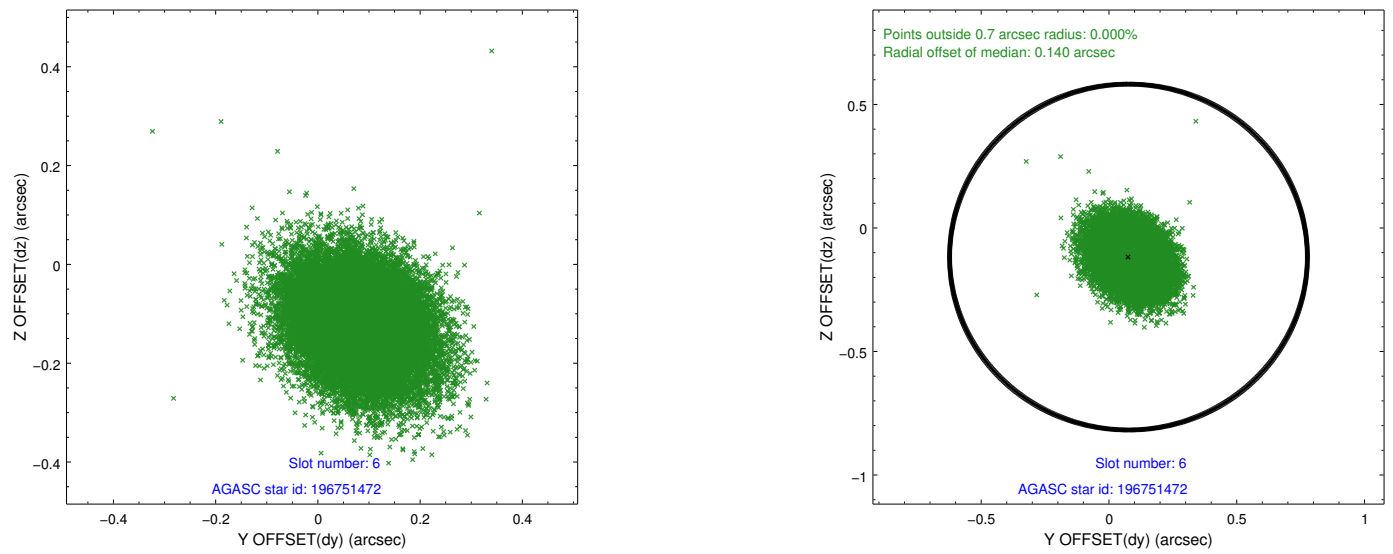
2.4.2 Slot 4



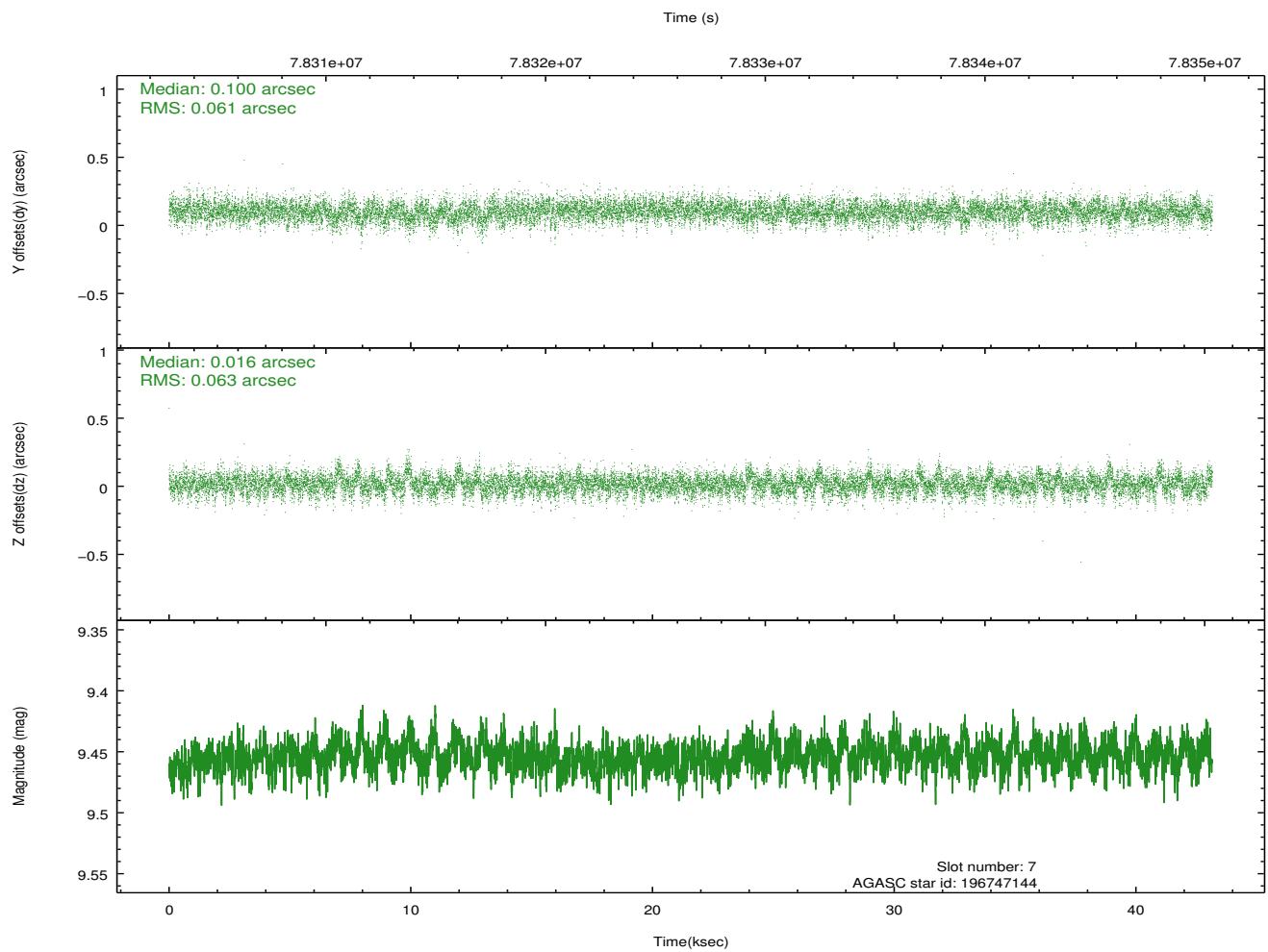
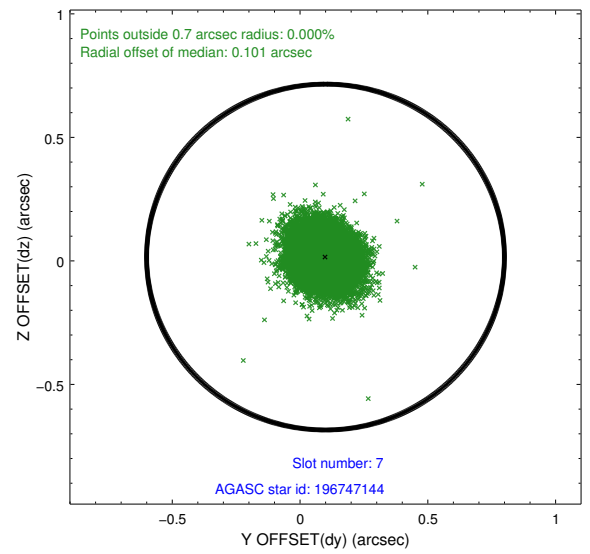
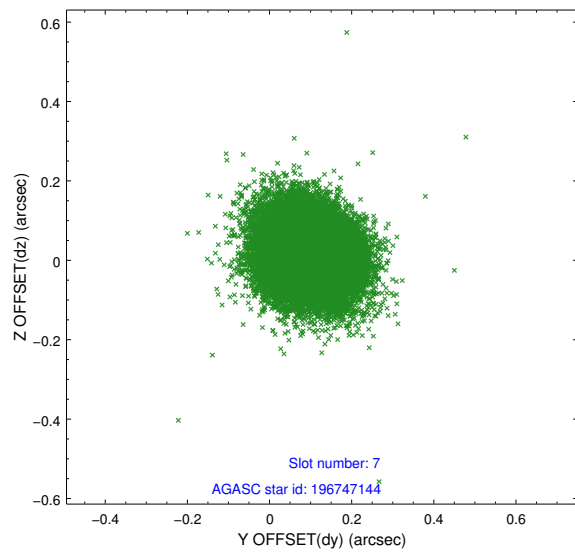
2.4.3 Slot 5



2.4.4 Slot 6

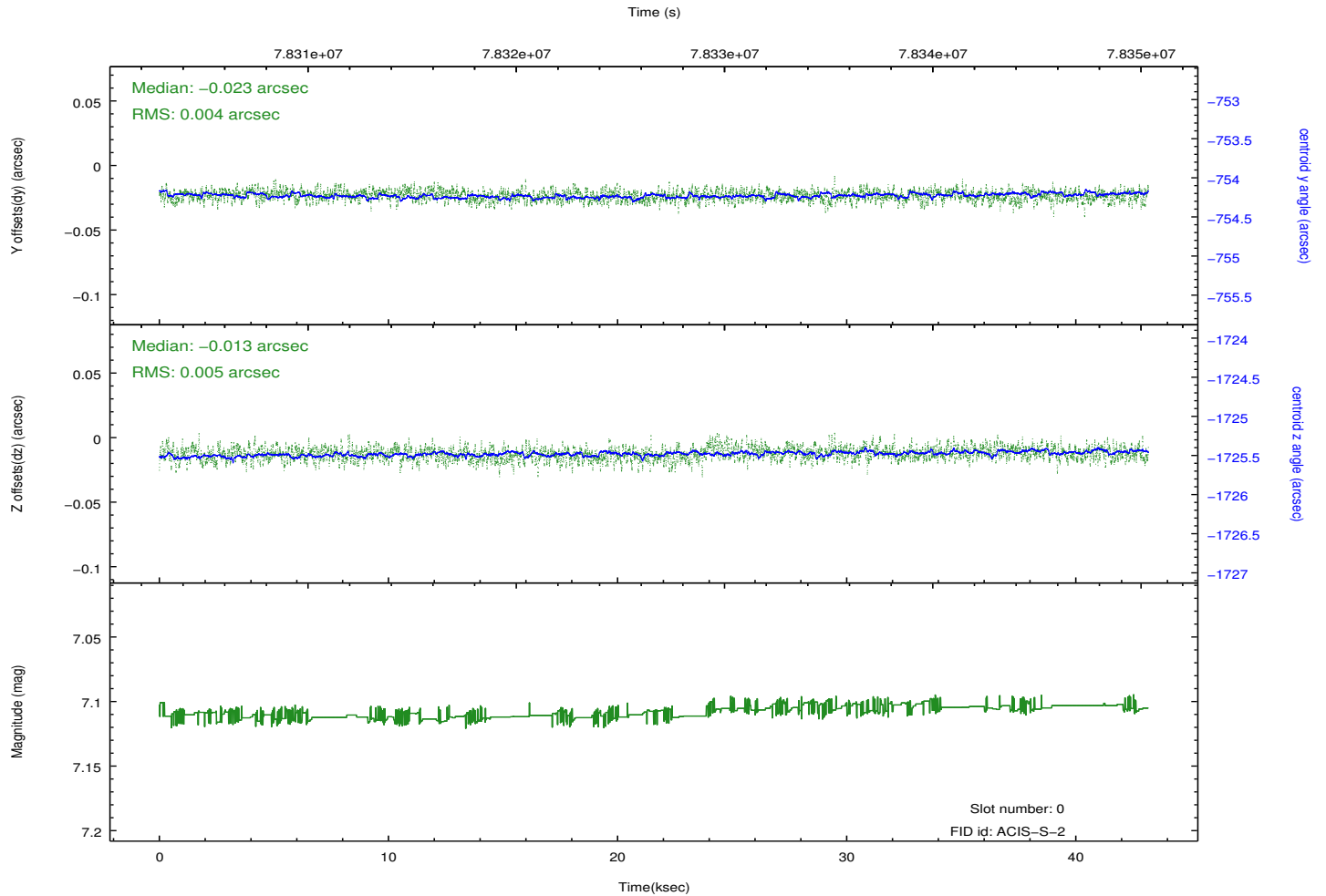
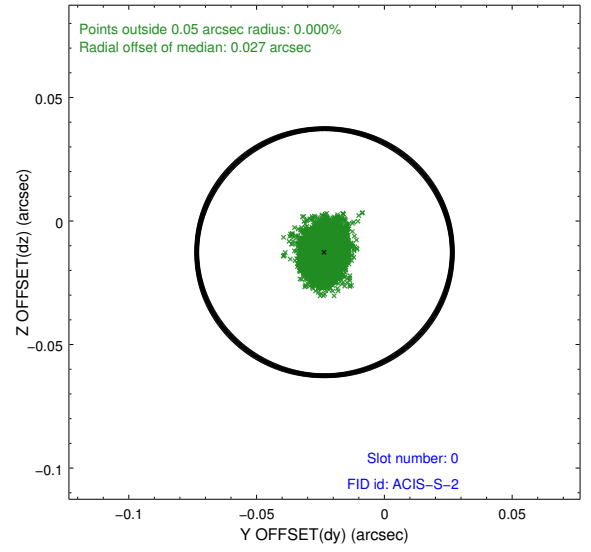
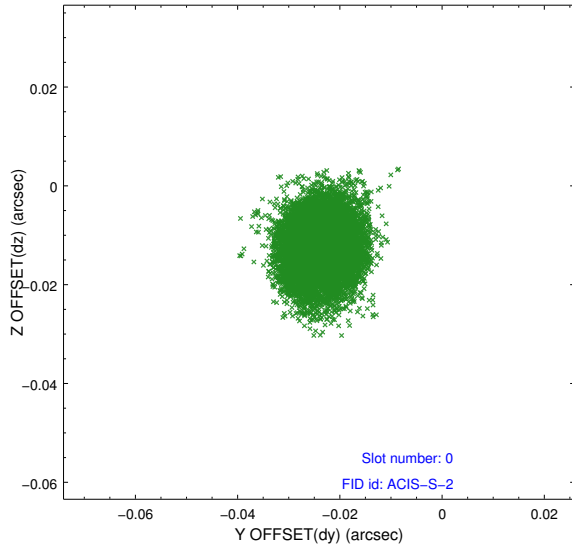


2.4.5 Slot 7

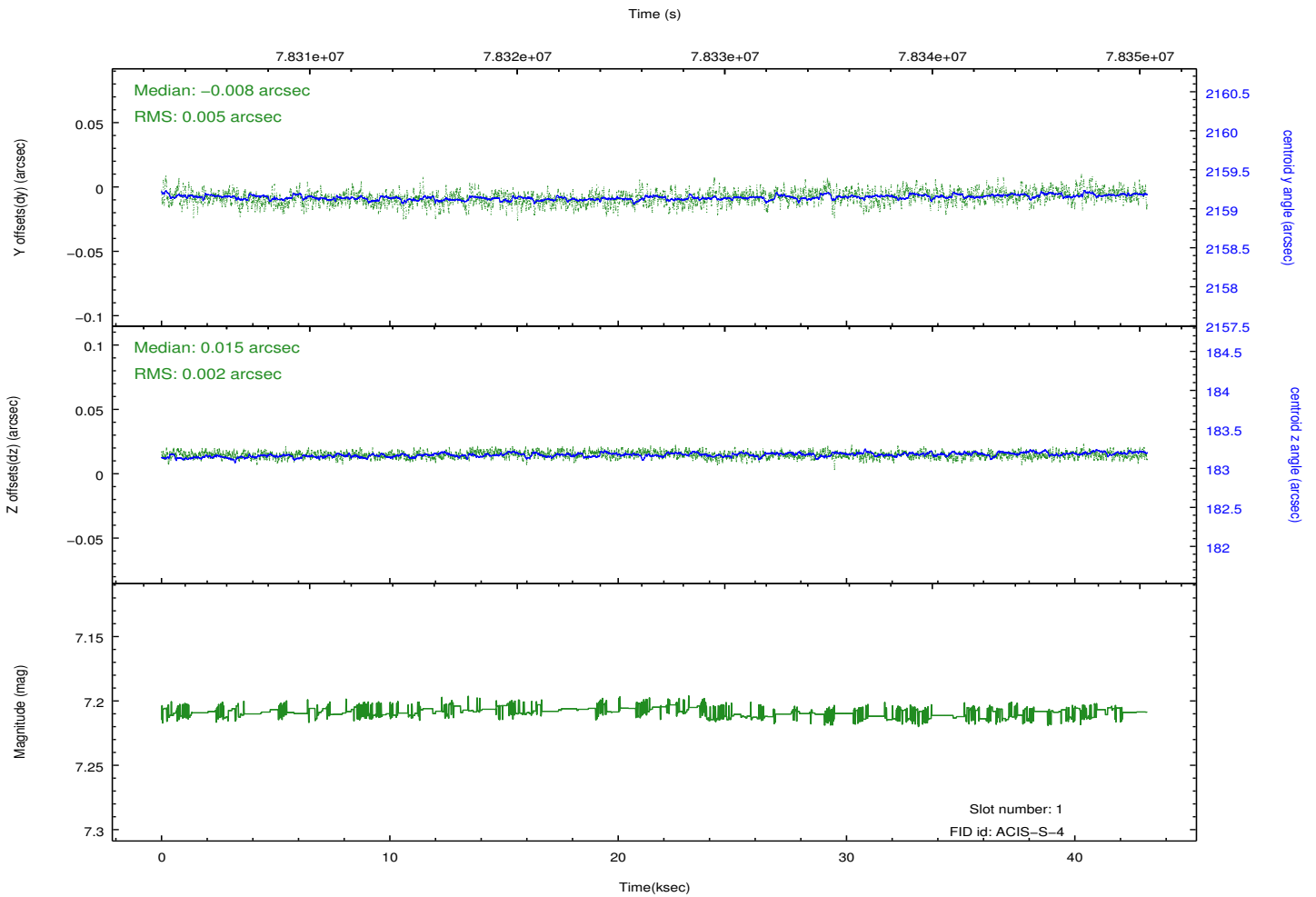
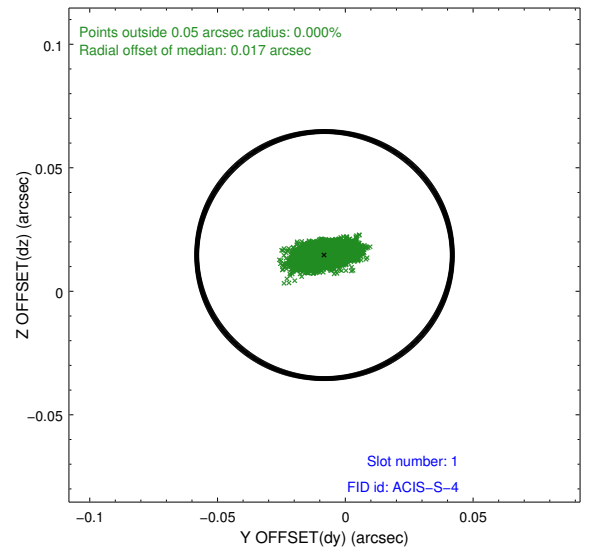
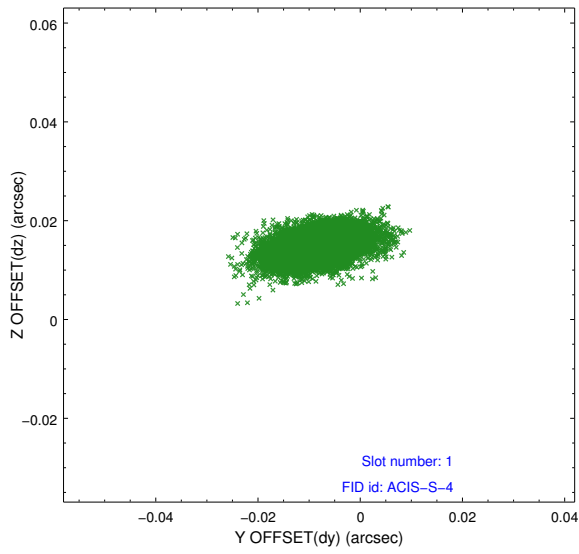


2.5 FID Slots

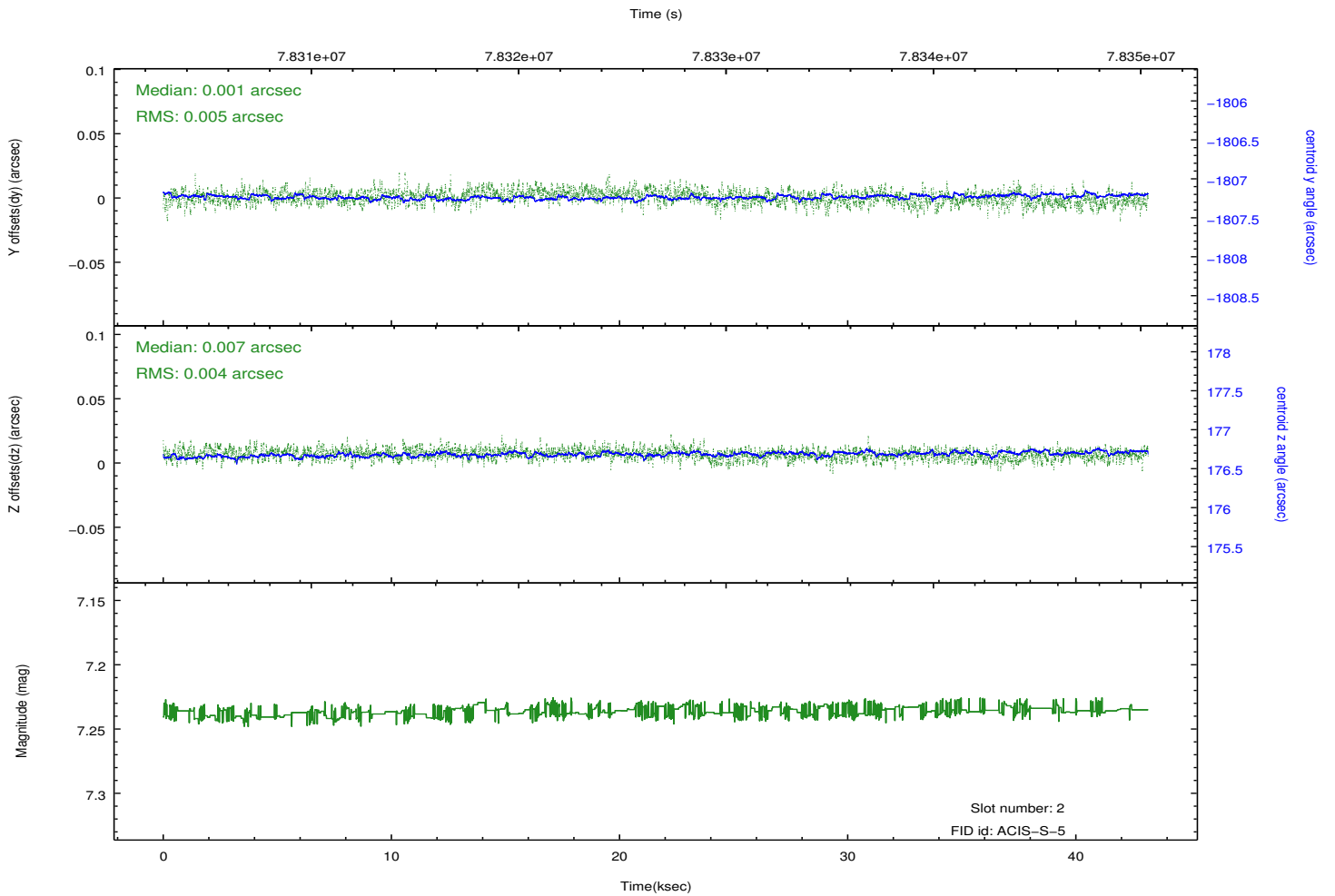
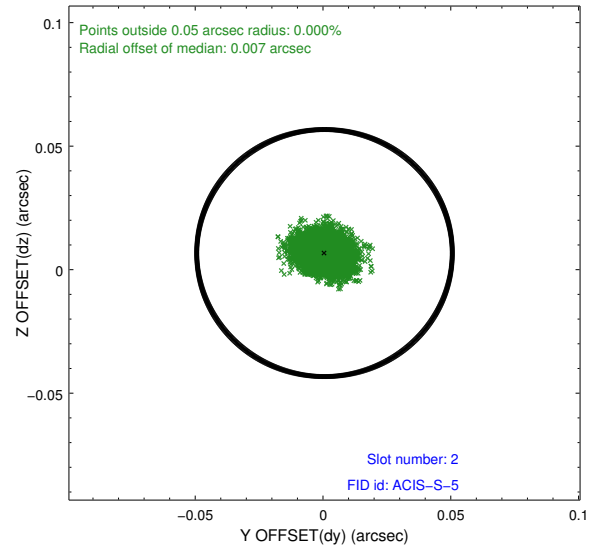
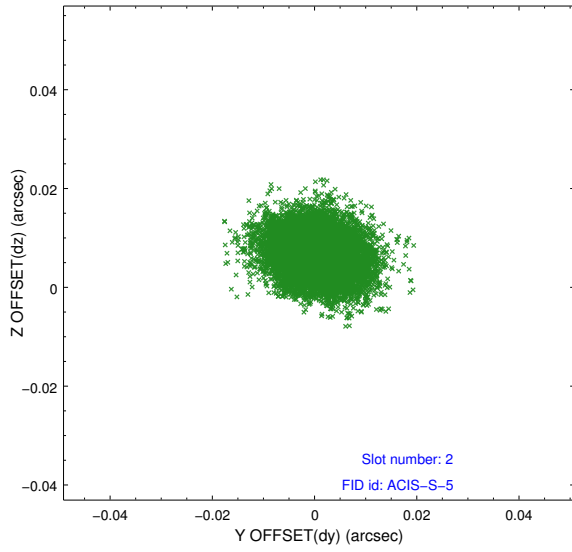
2.5.1 Slot 0



2.5.2 Slot 1



2.5.3 Slot 2



A Summary

A.1 Status

V&V Scientist	Jen Lauer
V&V Date (YYYY-MM-DD)	2012.09.04
V&V Edition	1
V&V Disposition and Status	OK
V&V Charge Time	42.688

A.2 Comments