

V&V Reference Report

L2 ASCDS Version : 8.4.5

Observation 3276 - L2 Version 3
Chandra X-Ray Center

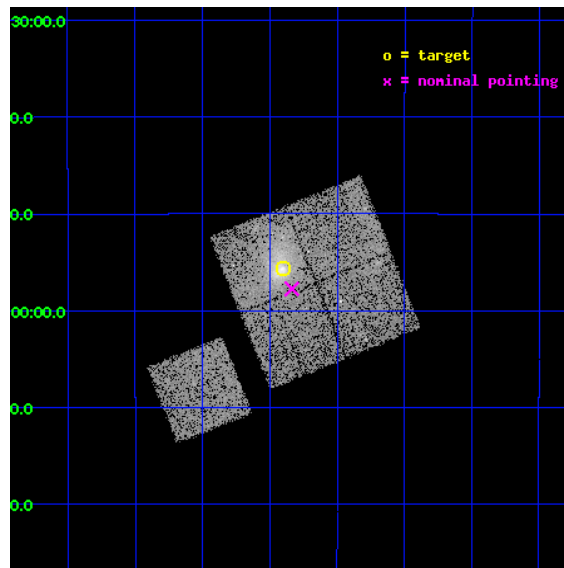
L2 Processing Date : Oct 9 2012

Contents

1	Front	2
2	OBI	3
2.1	OBI	3
2.1.1	Images	3
2.1.2	Bias	3
2.1.3	Parameters	4
2.1.4	Events	4
2.2	Compared Parameters	5
2.3	Aspect	6
2.4	Star Slots	9
2.4.1	Slot 3	9
2.4.2	Slot 4	10
2.4.3	Slot 5	11
2.4.4	Slot 6	12
2.4.5	Slot 7	13
2.5	FID Slots	14
2.5.1	Slot 0	14
2.5.2	Slot 1	15
2.5.3	Slot 2	16
A	Summary	17
A.1	Status	17
A.2	Comments	17

1 Front

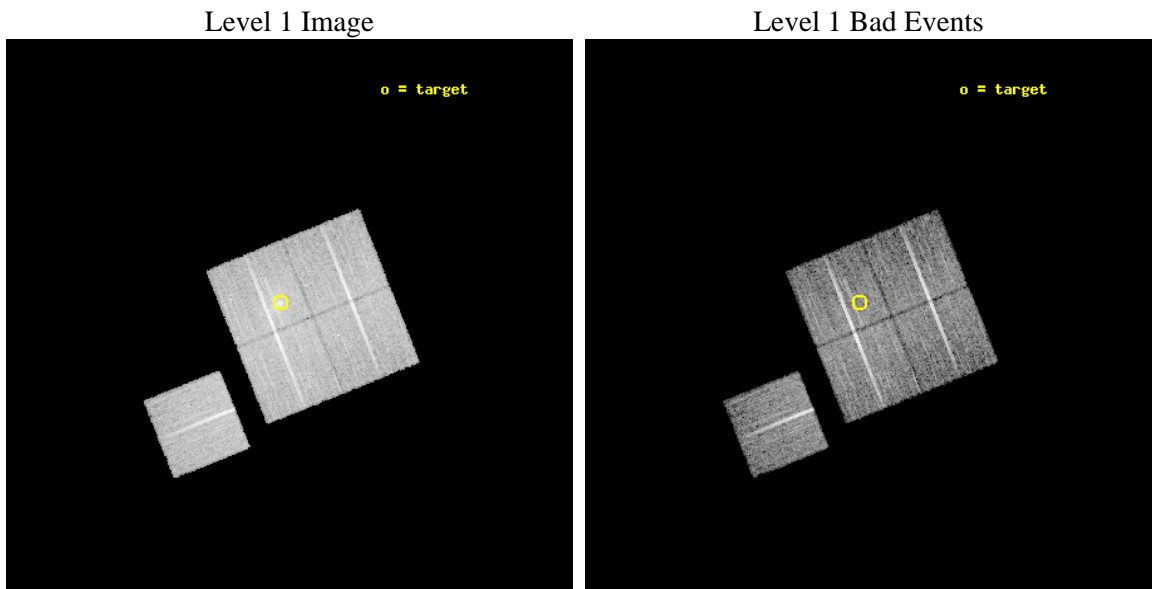
seq_num	800276	Sequence number
obs_id	3276	Observation id
title	MACS: THE X-RAY PROPERTIES OF THE MOST MASSIVE GALAXY CLUSTERS AT Z>0.3	Proposal title
observer	Dr. Harald Ebeling	Principal investigator
object	MACSJ1131.8-1955	Source name
dtcycle	0	
cycle	P	events from which exps? Prim/Second/Both
ra_targ	172.975833	Observer's specified target RA [deg]
dec_targ	-19.928333	Observer's specified target Dec [deg]
ra_nom	172.95902918379	Nominal RA [deg]
dec_nom	-19.962592187047	Nominal Dec [deg]
roll_nom	248.17007572381	Nominal Roll [deg]
revision	3	Processing version of data
ontime	14092.599972874	Sum of GTIs [s]
livetime	13908.469779407	Livetime [s]
ontime0	14083.177151948	Sum of GTIs [s]
ontime1	14092.599972874	Sum of GTIs [s]
ontime2	14089.459012657	Sum of GTIs [s]
ontime3	14092.599972874	Sum of GTIs [s]
ontime6	14089.459012657	Sum of GTIs [s]
l2events	44781	Number of level 2 events



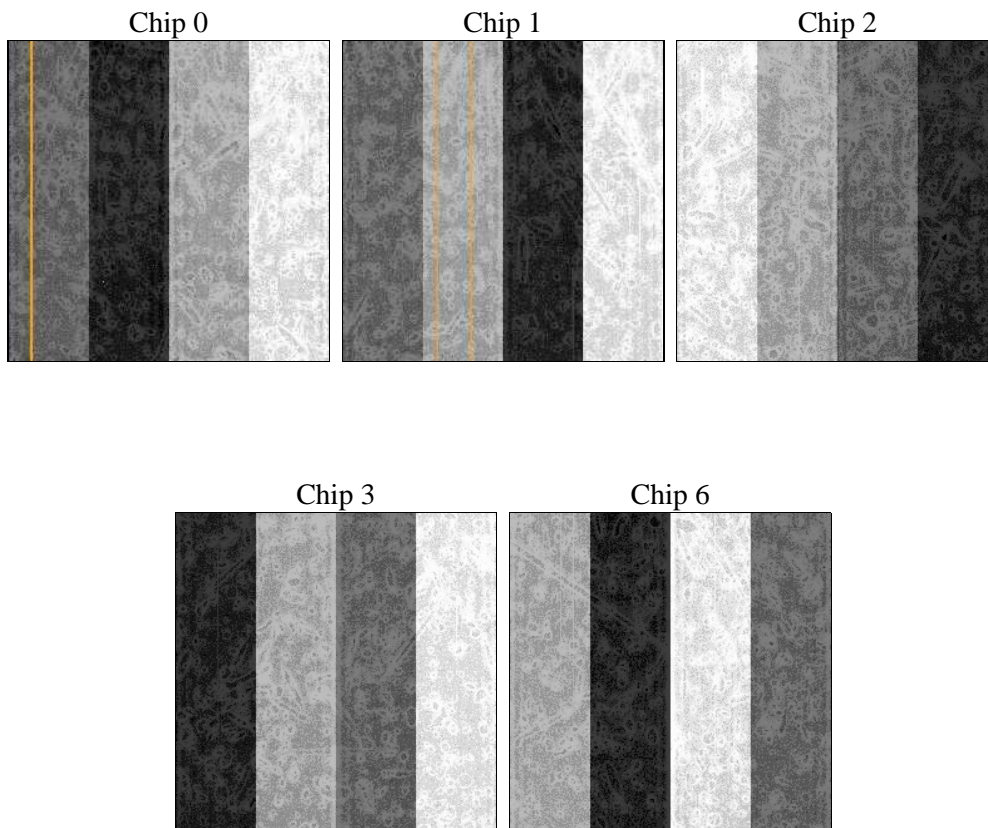
2 OBI

2.1 OBI

2.1.1 Images



2.1.2 Bias



2.1.3 Parameters

obi_num	0	Obi number	sched_exp_time	14322.290000	[s] Scheduled observation exposure time
ascdsver	8.4.5	Processing system revision	ontime	14092.599972874	Sum of GTIs [s]
caldbver	4.5.2	 	ontime0	14083.177151948	Sum of GTIs [s]
date	2012-10-09T04:10:25	Date and time of file creation	ontime1	14092.599972874	Sum of GTIs [s]
revision	3	Processing version of data	ontime2	14089.459012657	Sum of GTIs [s]
			ontime3	14092.599972874	Sum of GTIs [s]
			ontime6	14089.459012657	Sum of GTIs [s]
			l1events	390100	Number of level 1 events

2.1.4 Events

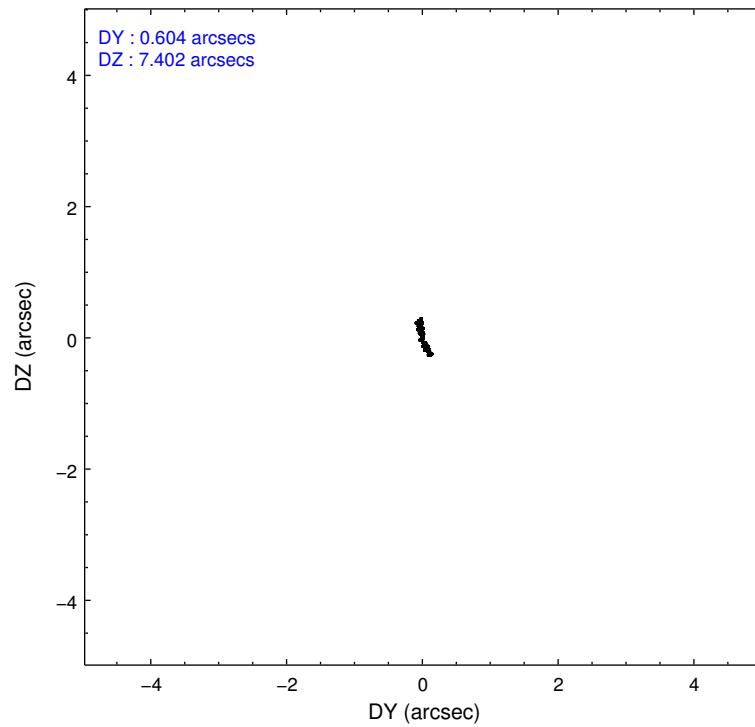
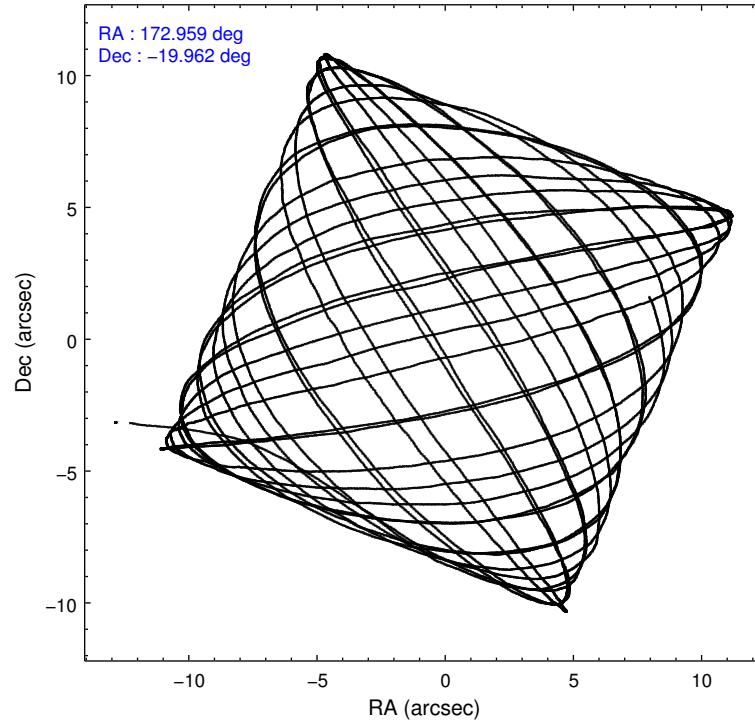
	ccd 0	ccd 1	ccd 2	ccd 3	ccd 6
level 1 events	71324	72138	83194	86019	77425
rejected events	62967	62550	74875	68982	68747
rejected %	88%	86%	90%	80%	88%

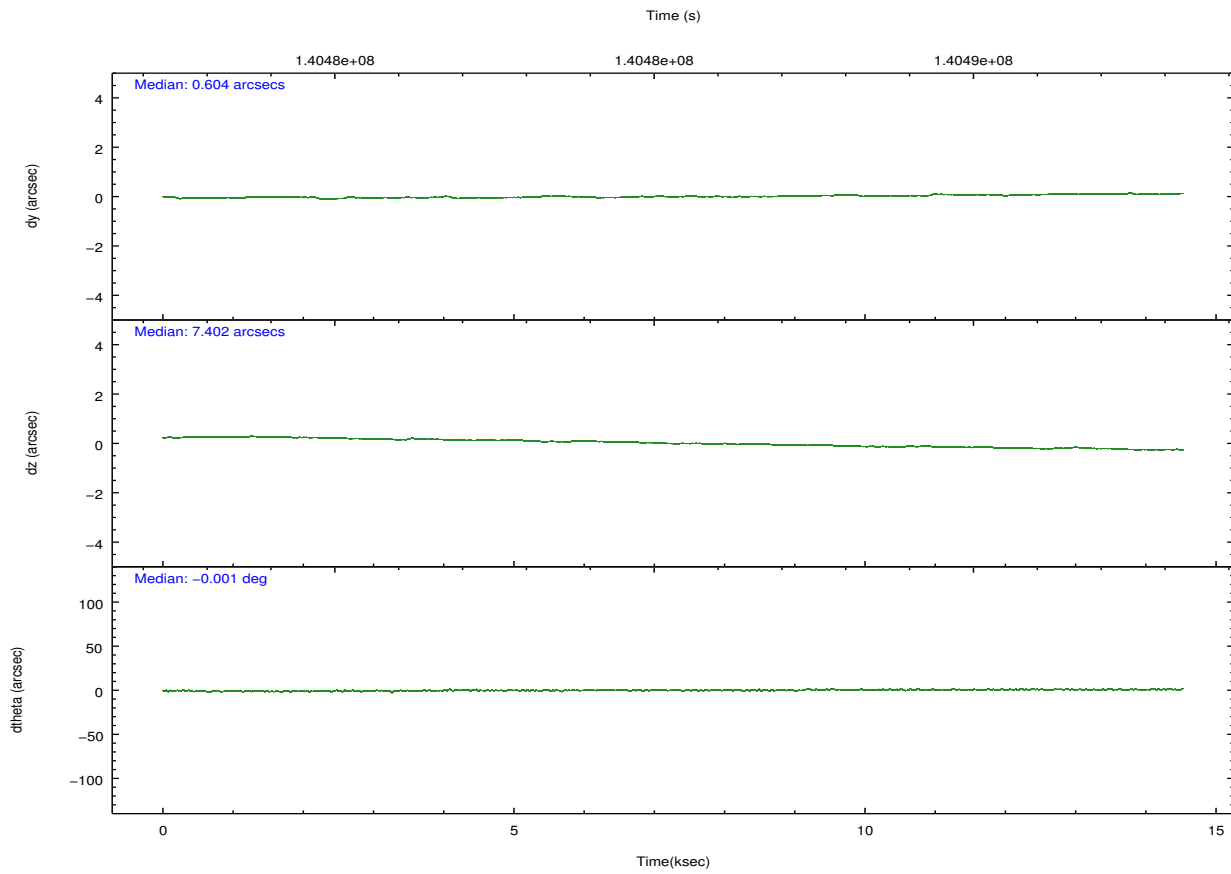
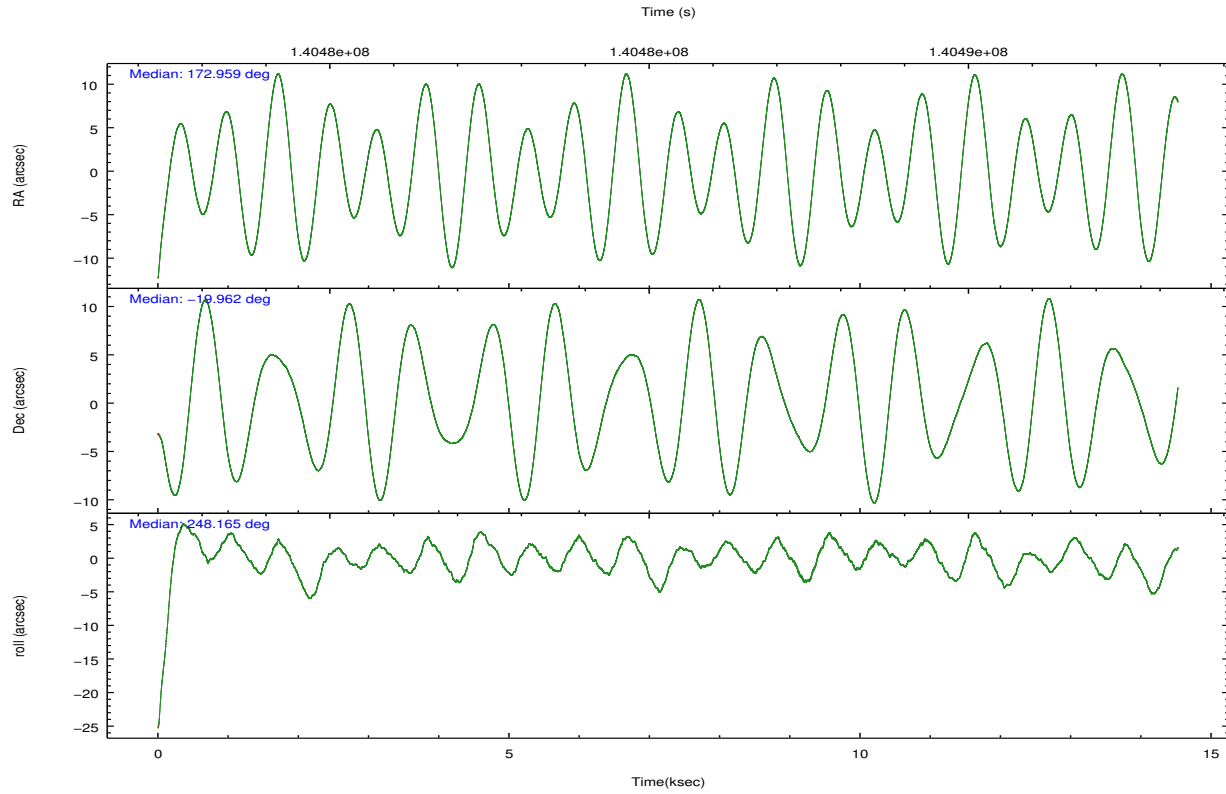
	ccd 0	ccd 1	ccd 2	ccd 3	ccd 6
grade 0 events	3252	3973	3358	10624	3538
	4%	5%	4%	12%	4%
grade 1 events	41	33	31	61	32
	0%	0%	0%	0%	0%
grade 2 events	1836	1896	1802	2527	1679
	2%	2%	2%	2%	2%
grade 3 events	925	1037	832	1043	906
	1%	1%	1%	1%	1%
grade 4 events	852	972	877	1115	895
	1%	1%	1%	1%	1%
grade 5 events	2583	2843	2259	2799	2798
	3%	3%	2%	3%	3%
grade 6 events	1497	1715	1454	1740	1665
	2%	2%	1%	2%	2%
grade 7 events	60338	59669	72581	66110	65912
	84%	82%	87%	76%	85%

2.2 Compared Parameters

Parameter	Planned	Actual	Parameter	Planned	Actual
Instrument	ACIS	ACIS	Obspar format version number	7	7
Detector	ACIS-01236	ACIS-01236	Obspar file type	PREDICTED	ACTUAL
Grating	NONE	NONE	Obspar update status	NONE	UPDATED
Data mode	VFAINT	VFAINT	Number of optional ACIS chips dropped	0	0
Observation mode	POINTING	POINTING	On-chip summing requested	N	N
[deg] Pointing RA	172.954793	172.9590291837901	Subarray requested	NONE	NONE
[deg] Pointing Dec	-19.935433	-19.96259218704658	Alternating exposures requested	N	N
[deg] Pointing Roll	247.959951	248.1700757238118	[s] Primary exposure time	0.000000	3.1
[mm] SIM focus pos	-0.782348	-0.7809083437167272			
[mm] SIM defocus	0	0.001439871863259334			
[mm] SIM translation stage pos	-227.742463	-227.734108438797			
[mm] SIM translation stage offset	-5.85	-5.858344564132665			
[s] Observation start time (MET)	140478237.184000	140477511.22698			
Observation start date	2002-06-14T21:42:53	2002-06-14T21:31:51			
[s] Observation end time (MET)	140492560.184000	140492874.44011			
Observation end date	2002-06-15T01:41:36	2002-06-15T01:47:54			
Read mode	TIMED	TIMED			

2.3 Aspect



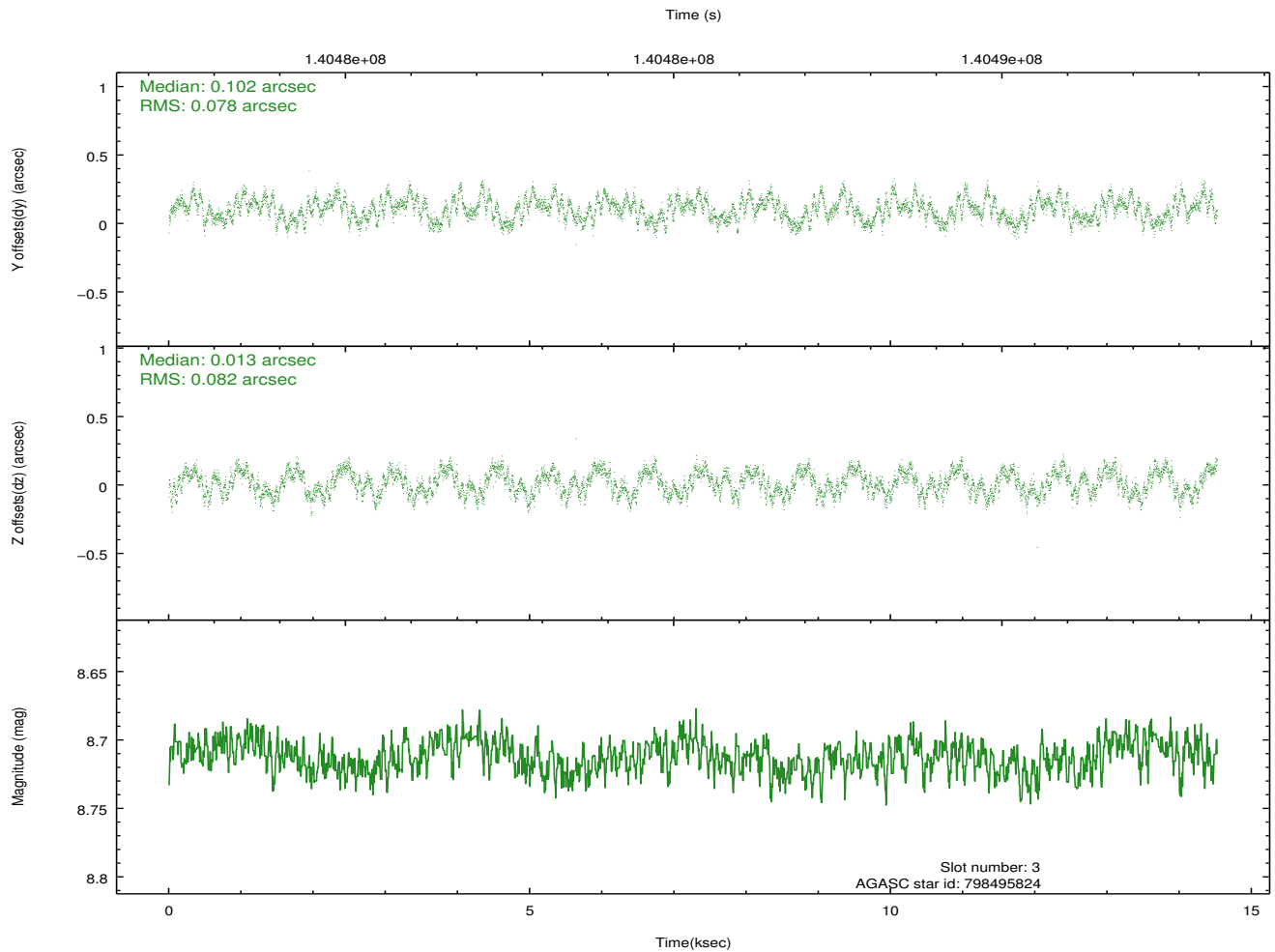
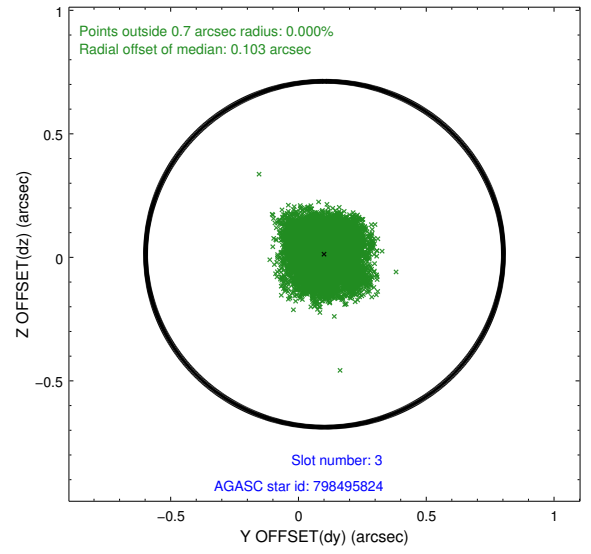
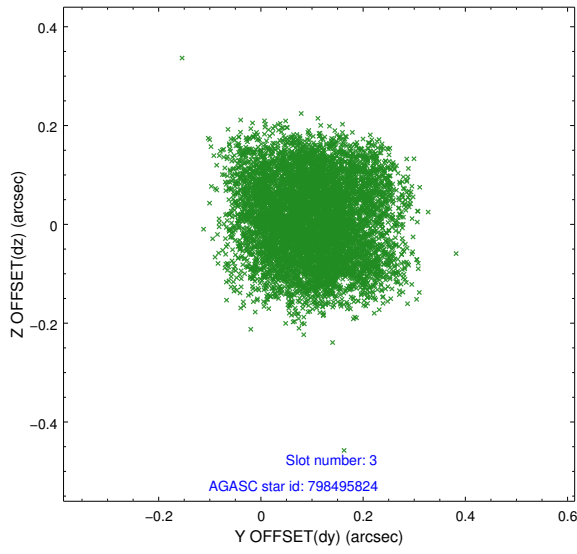


Slot Statistics

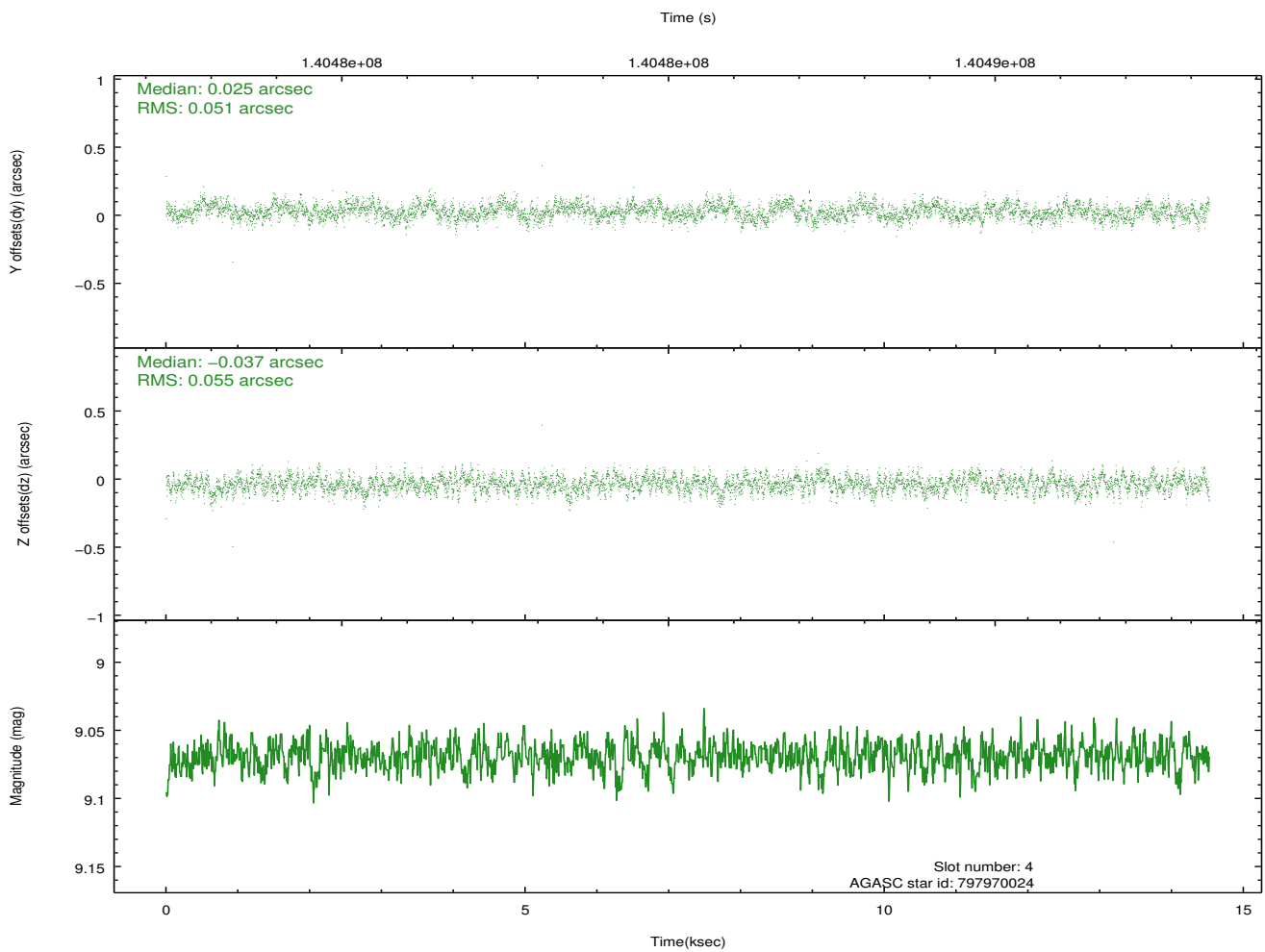
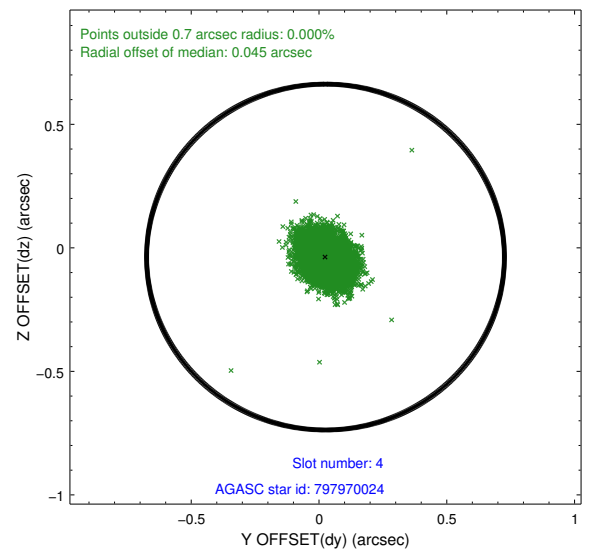
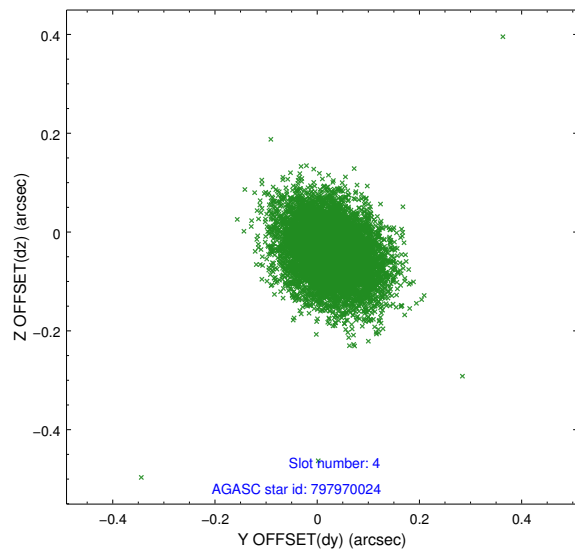
slot	status	id	mag	n_pts	med_dy	med_dz	dr1	dr2	ra	dec	mean_y	mean_z
0	FID	ACIS-I-1	7.24	3542	0.039	0.018	0.010	0.016	0.000000	0.000000	939.16	-951.06
1	FID	ACIS-I-5	7.23	3542	-0.164	0.064	0.008	0.013	0.000000	0.000000	-1808.95	946.33
2	FID	ACIS-I-6	7.26	3543	0.033	-0.011	0.009	0.014	0.000000	0.000000	404.39	1591.09
3	GUIDE	798495824	8.71	7085	0.102	0.013	0.126	0.183	173.403222	-20.546440	1474.60	2227.03
4	GUIDE	797970024	9.07	7086	0.025	-0.037	0.080	0.128	172.716766	-19.832014	-40.62	-886.94
5	GUIDE	798375016	9.29	7082	0.114	-0.041	0.081	0.131	172.536267	-20.217781	1475.73	-929.07
6	GUIDE	797968008	9.37	7081	-0.062	0.110	0.092	0.151	173.274298	-19.815834	-803.00	841.22
7	GUIDE	797970768	9.57	7013	-0.180	-0.039	0.097	0.159	173.312502	-19.484424	-1958.58	515.84

2.4 Star Slots

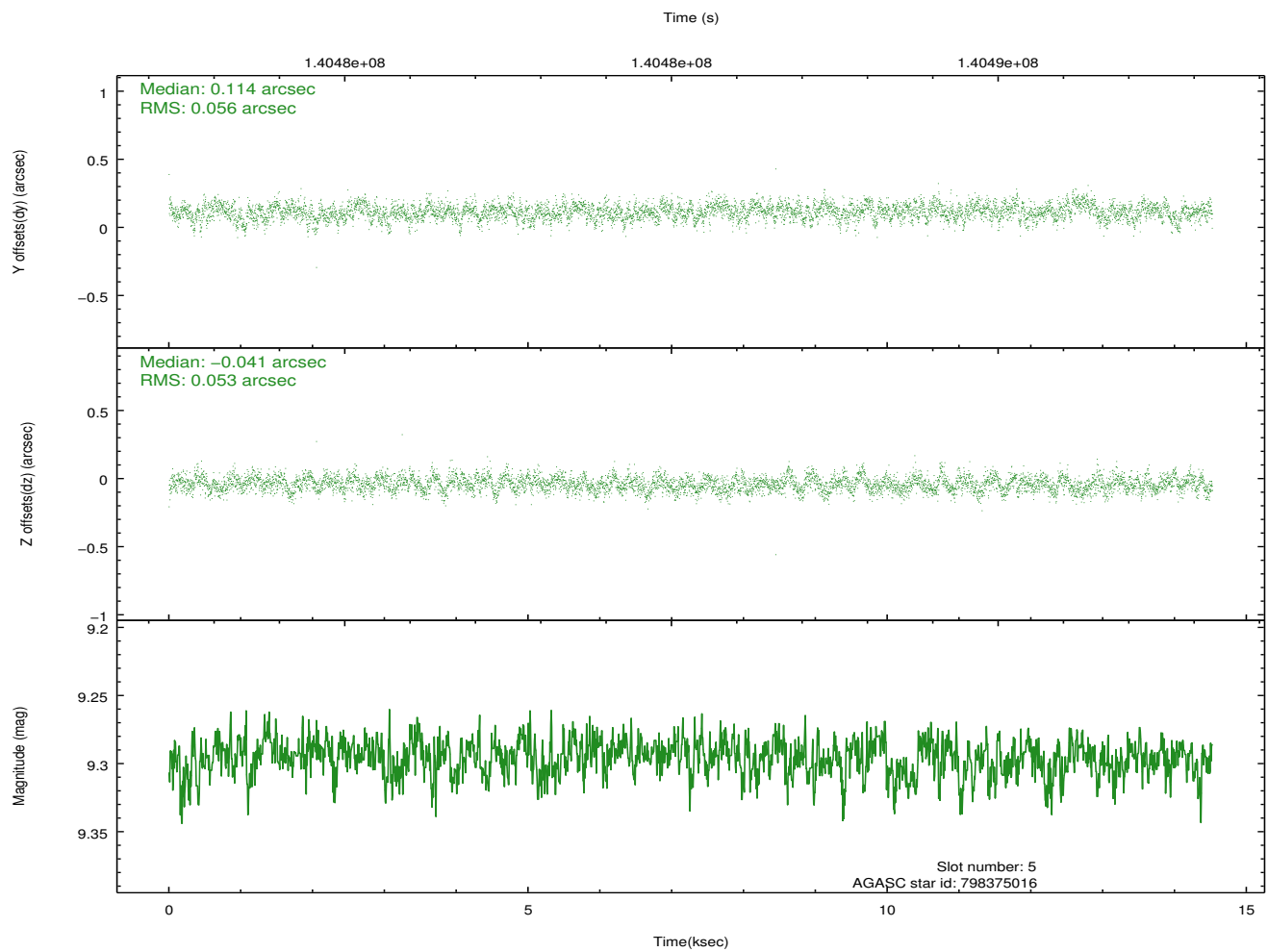
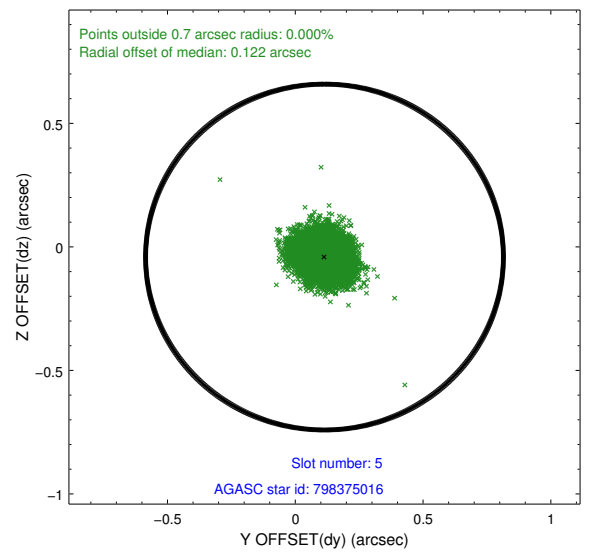
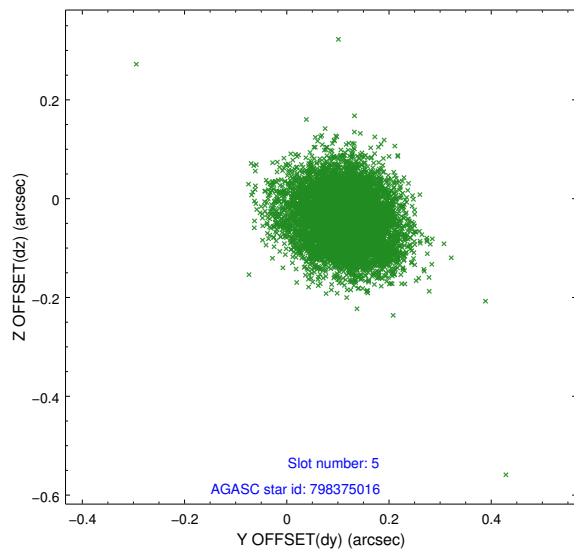
2.4.1 Slot 3



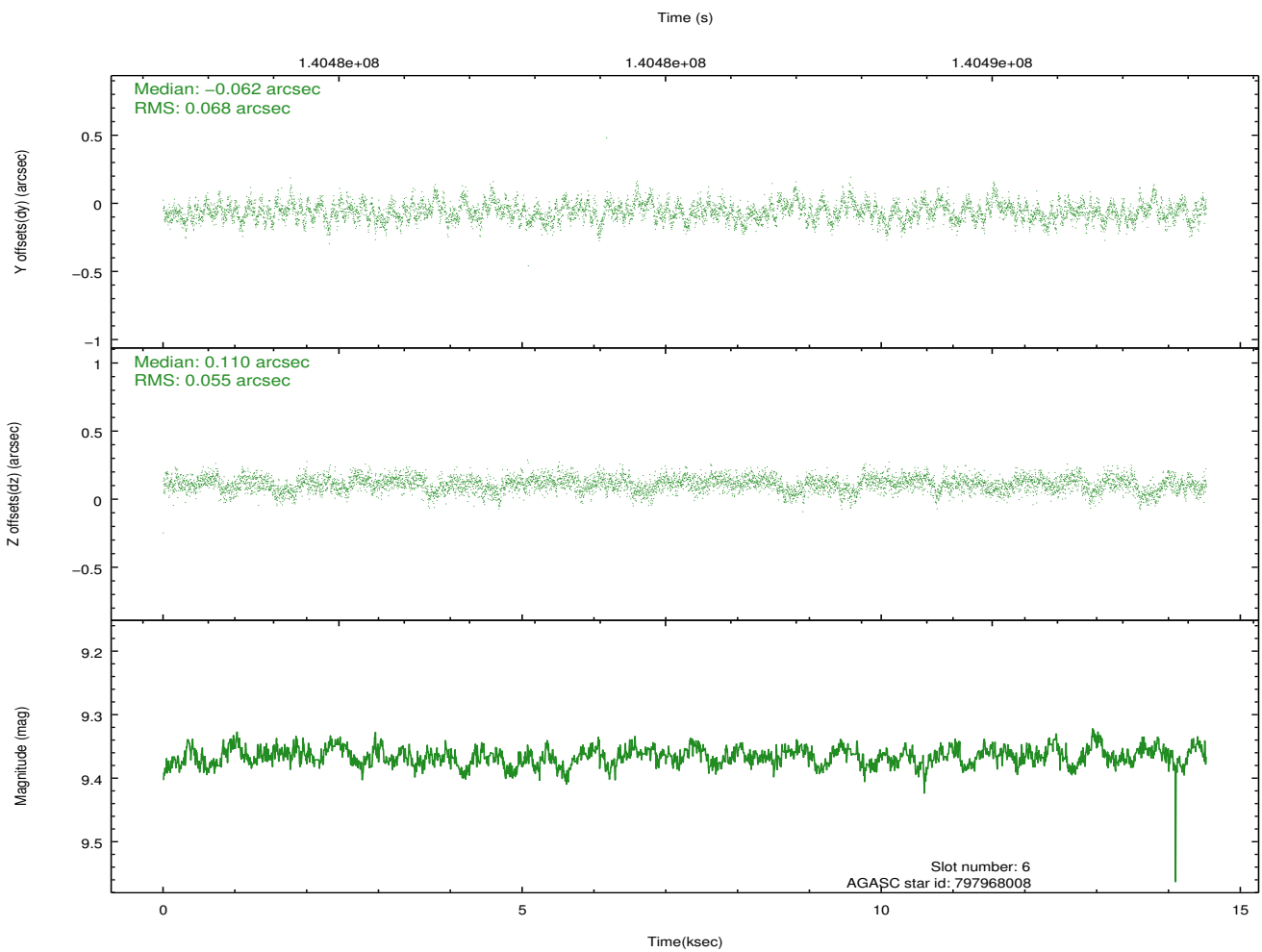
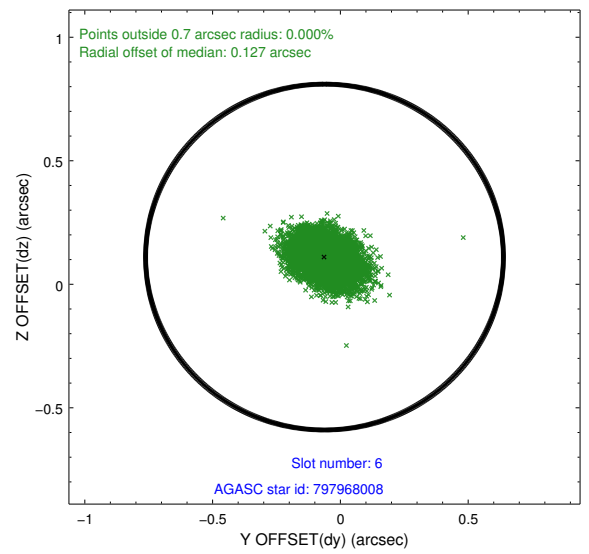
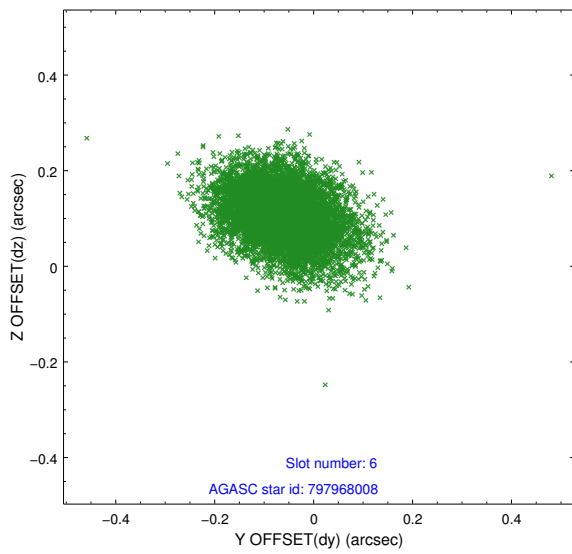
2.4.2 Slot 4



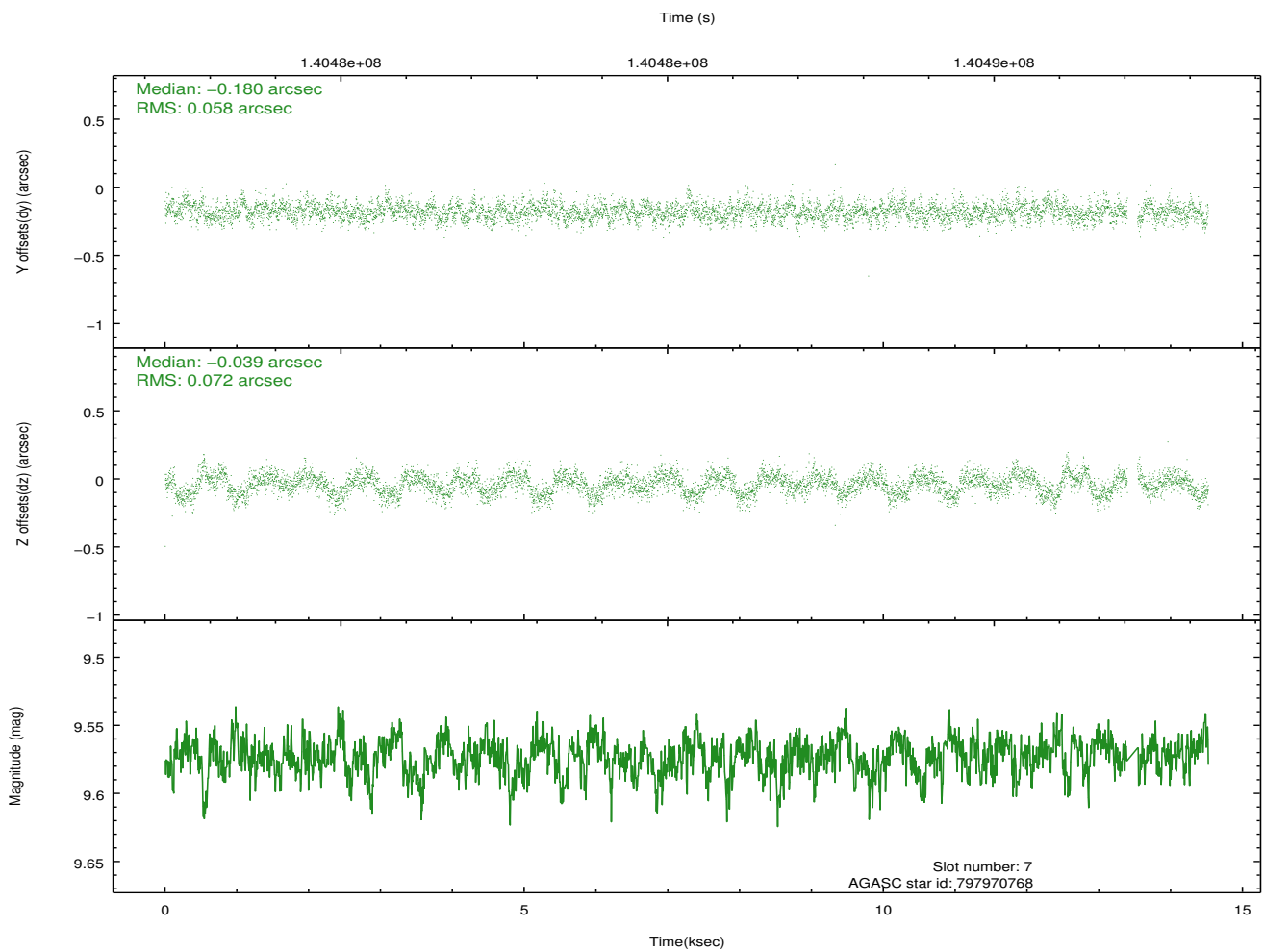
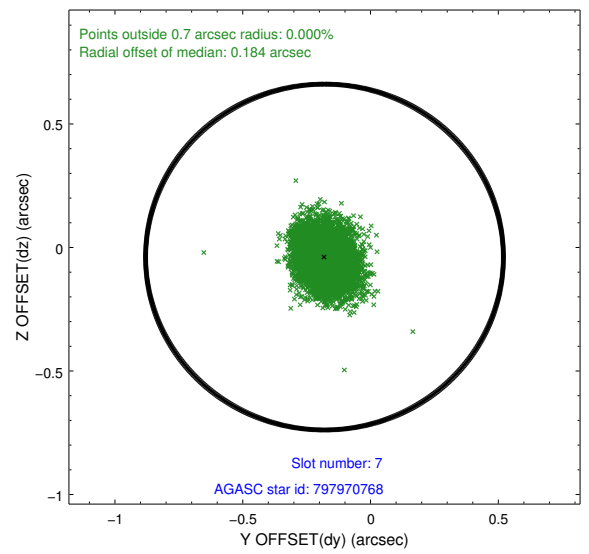
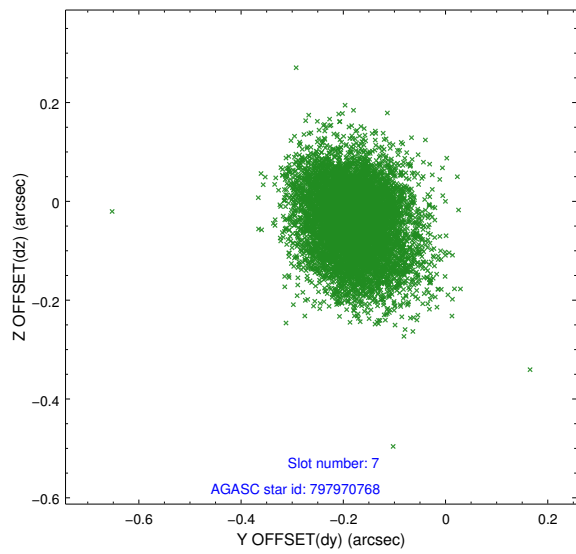
2.4.3 Slot 5



2.4.4 Slot 6

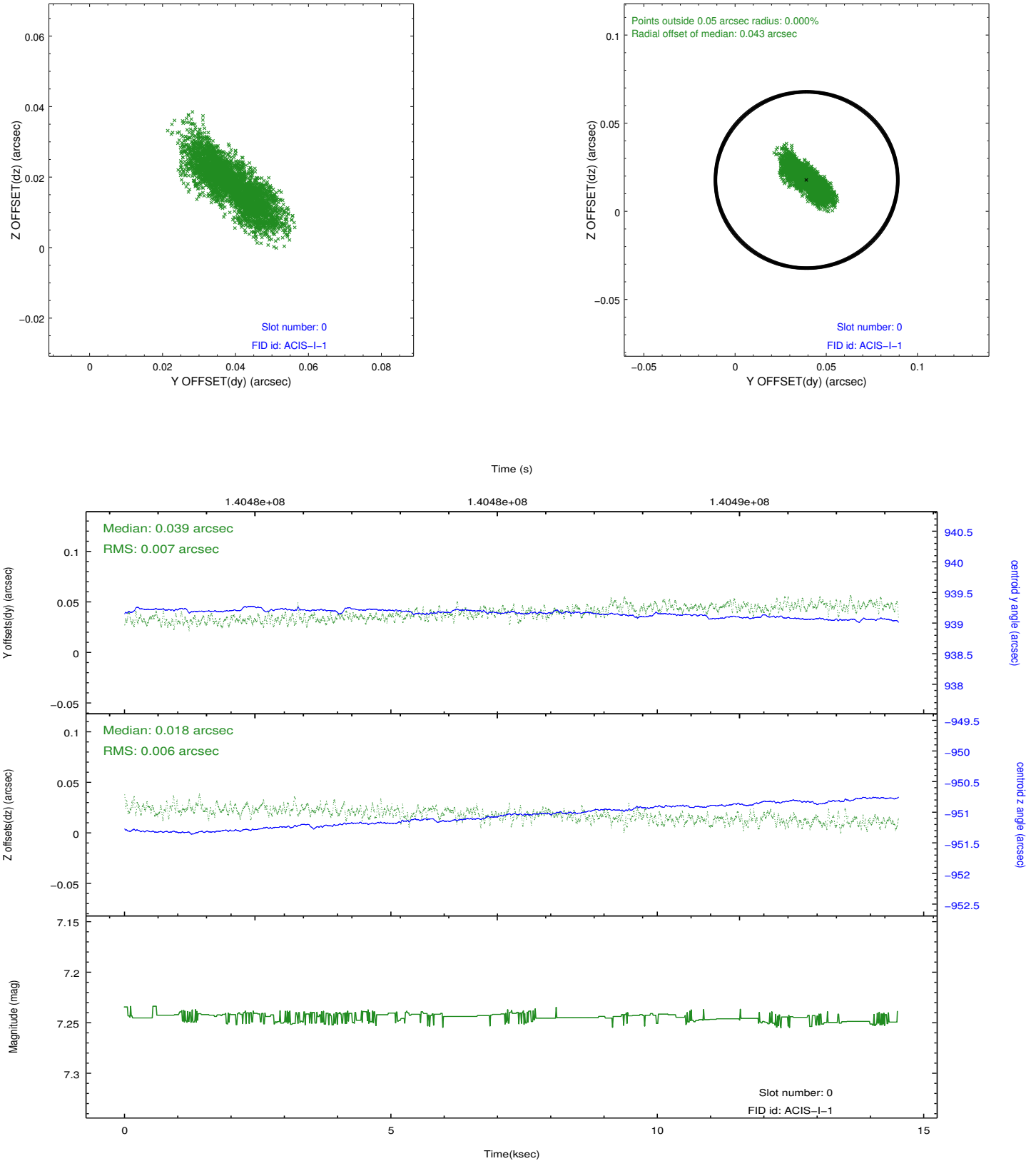


2.4.5 Slot 7

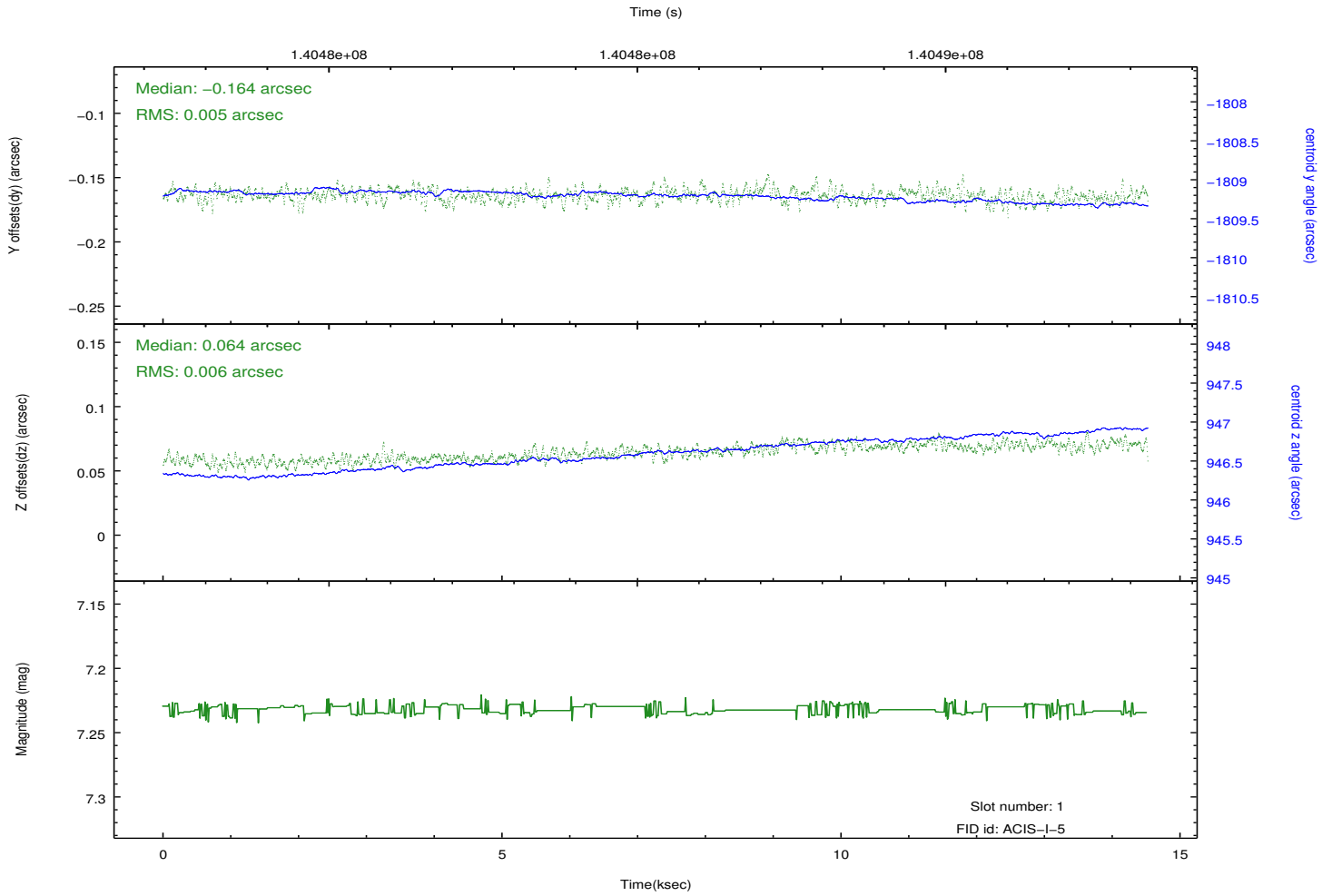
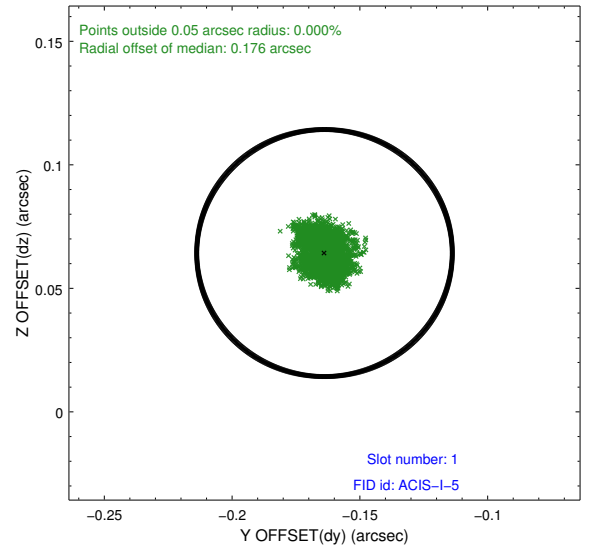
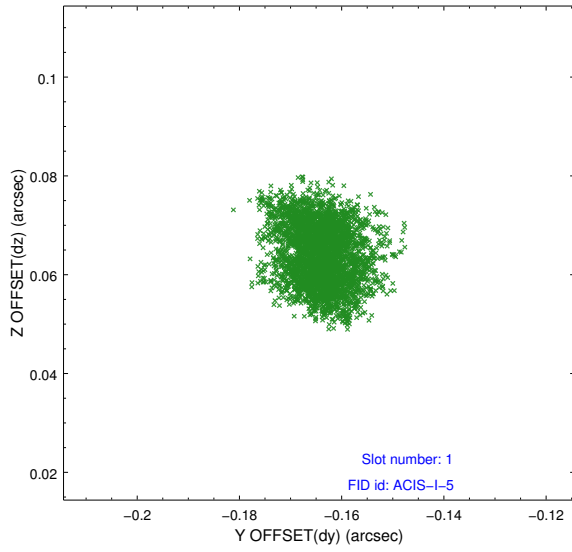


2.5 FID Slots

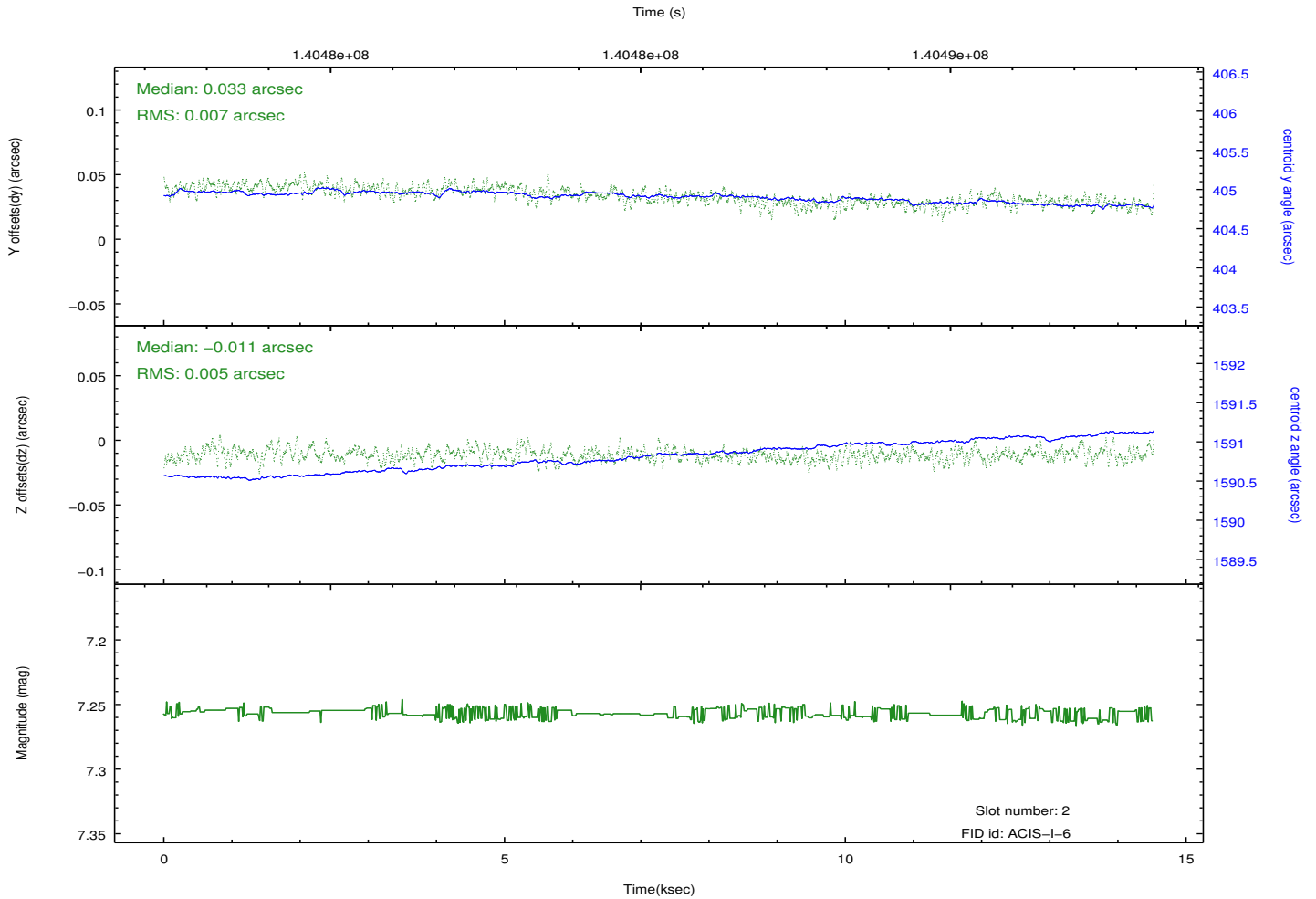
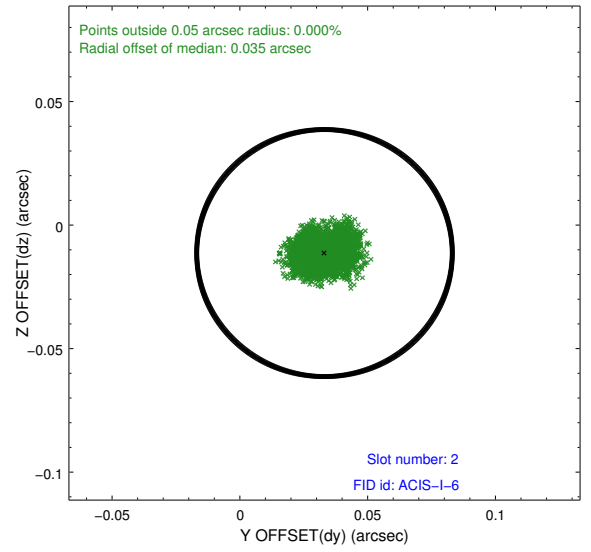
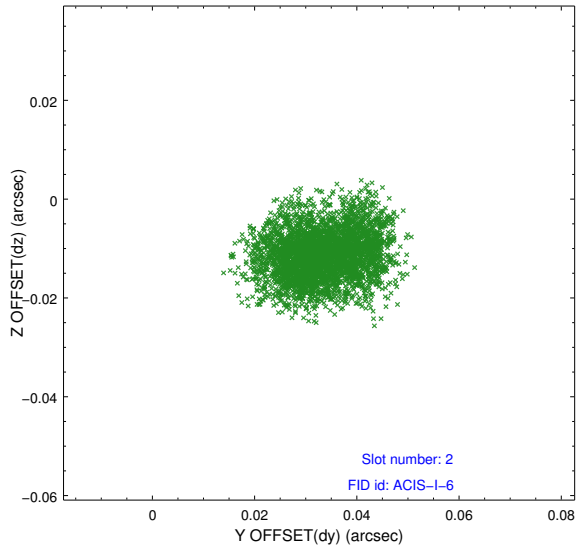
2.5.1 Slot 0



2.5.2 Slot 1



2.5.3 Slot 2



A Summary

A.1 Status

V&V Scientist	Jen Lauer
V&V Date (YYYY-MM-DD)	2012.10.18
V&V Edition	1
V&V Disposition and Status	OK
V&V Charge Time	14.095

A.2 Comments