

V&V Reference Report

L2 ASCDS Version : 8.4.5

Observation 3306 - L2 Version 3
Chandra X-Ray Center

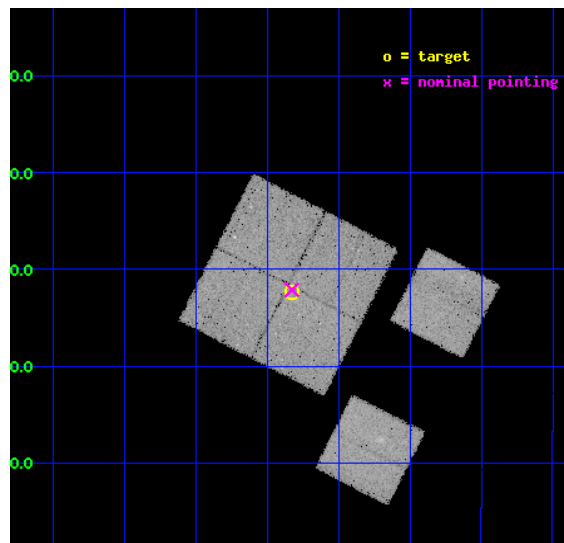
L2 Processing Date : Oct 10 2012

Contents

1	Front	2
2	OBI	3
2.1	OBI	3
2.1.1	Images	3
2.1.2	Bias	3
2.1.3	Parameters	4
2.1.4	Events	4
2.2	Compared Parameters	5
2.3	Aspect	6
2.4	Star Slots	9
2.4.1	Slot 3	9
2.4.2	Slot 4	10
2.4.3	Slot 5	11
2.4.4	Slot 6	12
2.4.5	Slot 7	13
2.5	FID Slots	14
2.5.1	Slot 0	14
2.5.2	Slot 1	15
2.5.3	Slot 2	16
A	Summary	17
A.1	Status	17
A.2	Comments	17

1 Front

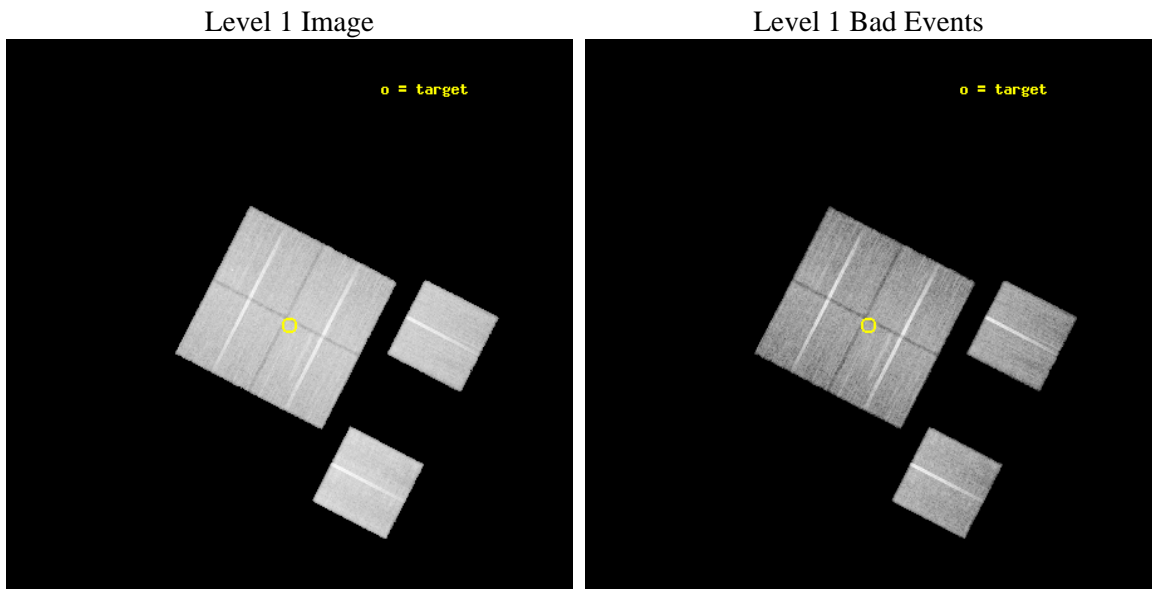
seq_num	900145	Sequence number
obs_id	3306	Observation id
title	A COMBINED CHANDRA/XMM ATTACK ON THE ASTROPHYSICS OF THE HARD X-RAY BACKGROUND.	Proposal title
observer	Prof. Ian McHardy	Principal investigator
object	XMM 1HR - FIELD 1	Source name
dtcycle	0	
cycle	P	events from which exps? Prim/Second/Both
ra_targ	26.4568	Observer's specified target RA [deg]
dec_targ	-4.540073	Observer's specified target Dec [deg]
ra_nom	26.456466583922	Nominal RA [deg]
dec_nom	-4.5354300431047	Nominal Dec [deg]
roll_nom	117.20865793147	Nominal Roll [deg]
revision	3	Processing version of data
ontime	28230.399894834	Sum of GTIs [s]
livetime	27872.929573059	Livetime [s]
ontime0	28230.399894834	Sum of GTIs [s]
ontime1	28227.158934563	Sum of GTIs [s]
ontime2	28230.399894834	Sum of GTIs [s]
ontime3	28230.399894834	Sum of GTIs [s]
ontime6	28230.399894834	Sum of GTIs [s]
ontime8	28230.399894834	Sum of GTIs [s]
l2events	131921	Number of level 2 events



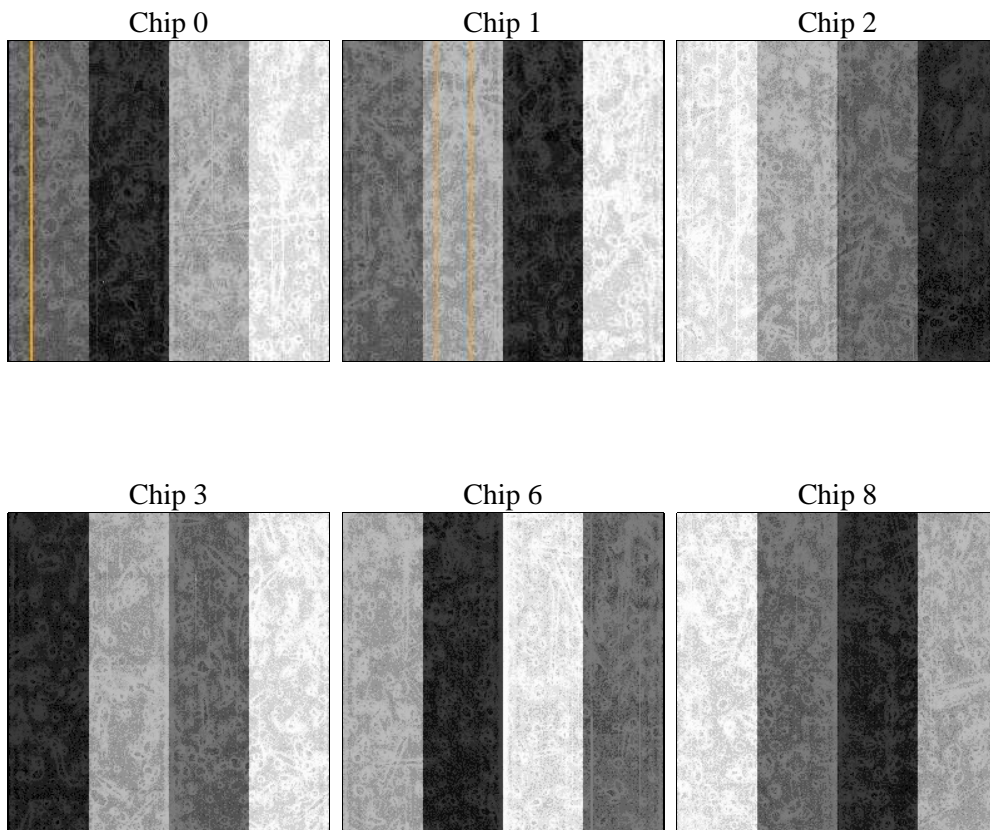
2 OBI

2.1 OBI

2.1.1 Images



2.1.2 Bias



2.1.3 Parameters

obi_num	0	Obi number	sched_exp_time	28121.377000	[s] Scheduled observation exposure time
ascdsver	8.4.5	Processing system revision	ontime	28230.399894834	Sum of GTIs [s]
caldbver	4.5.2	 	ontime0	28230.399894834	Sum of GTIs [s]
date	2012-10-10T01:48:39	Date and time of file creation	ontime1	28227.158934563	Sum of GTIs [s]
revision	3	Processing version of data	ontime2	28230.399894834	Sum of GTIs [s]
			ontime3	28230.399894834	Sum of GTIs [s]
			ontime6	28230.399894834	Sum of GTIs [s]
			ontime8	28230.399894834	Sum of GTIs [s]
			l1events	1167614	Number of level 1 events

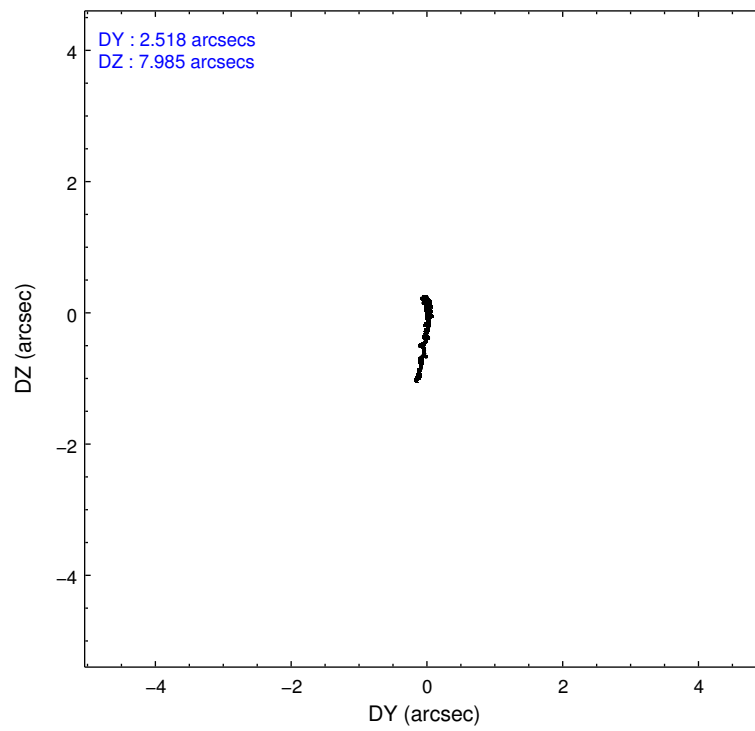
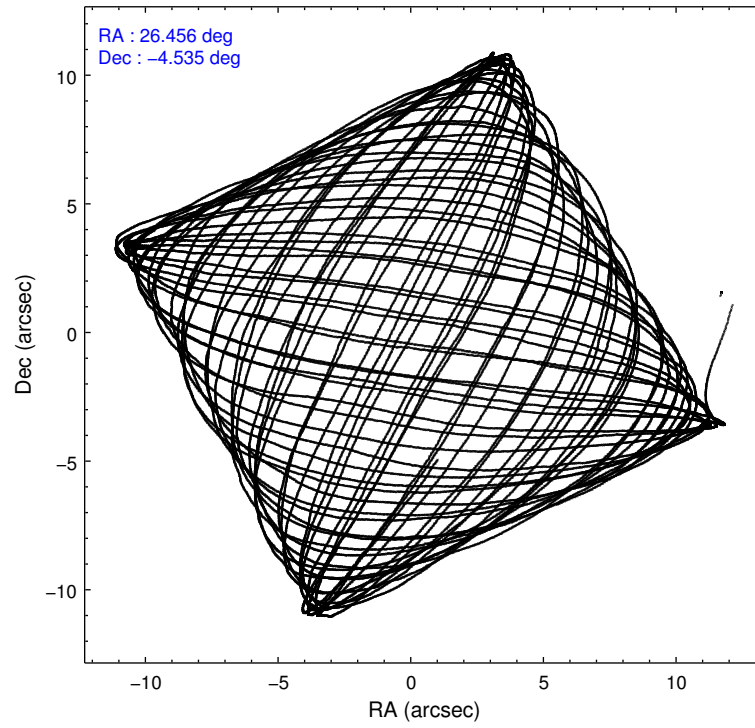
2.1.4 Events

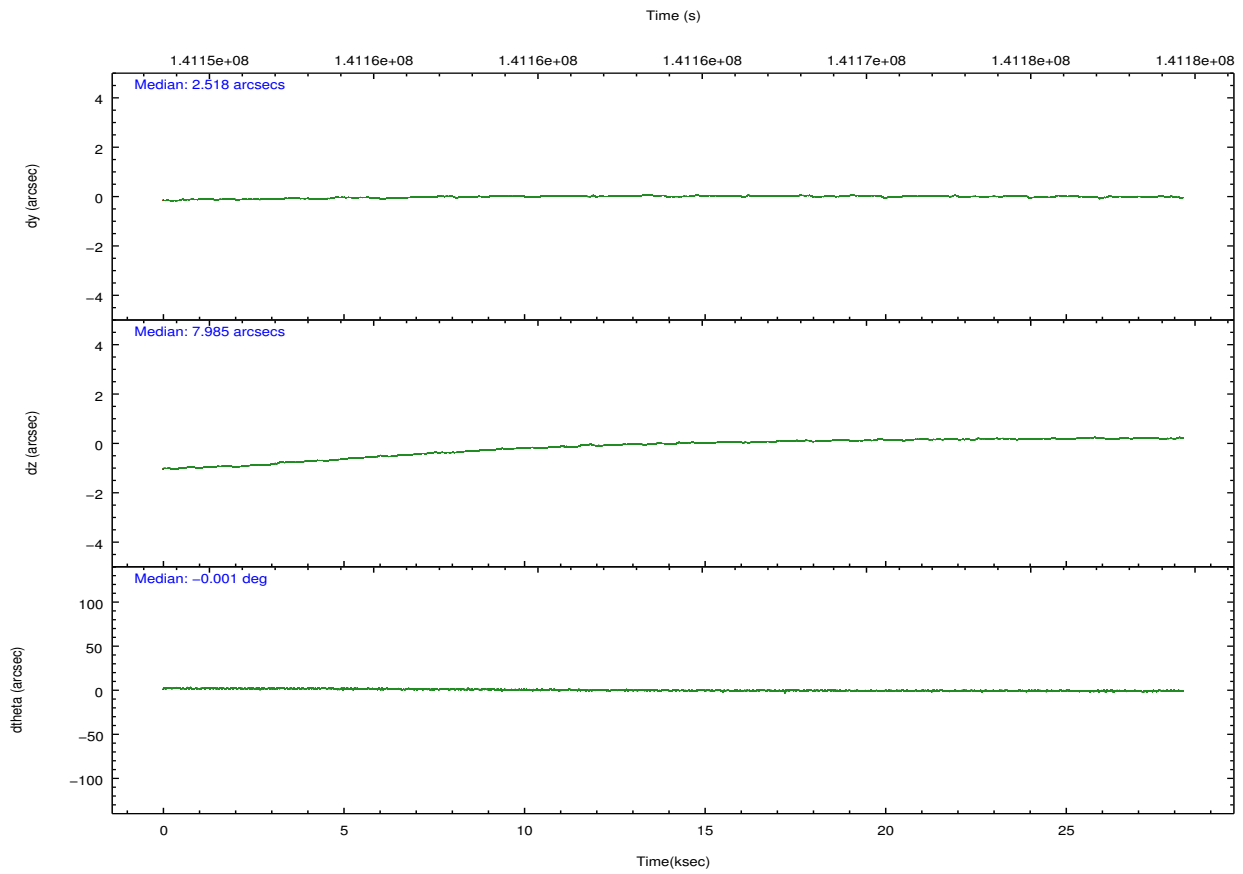
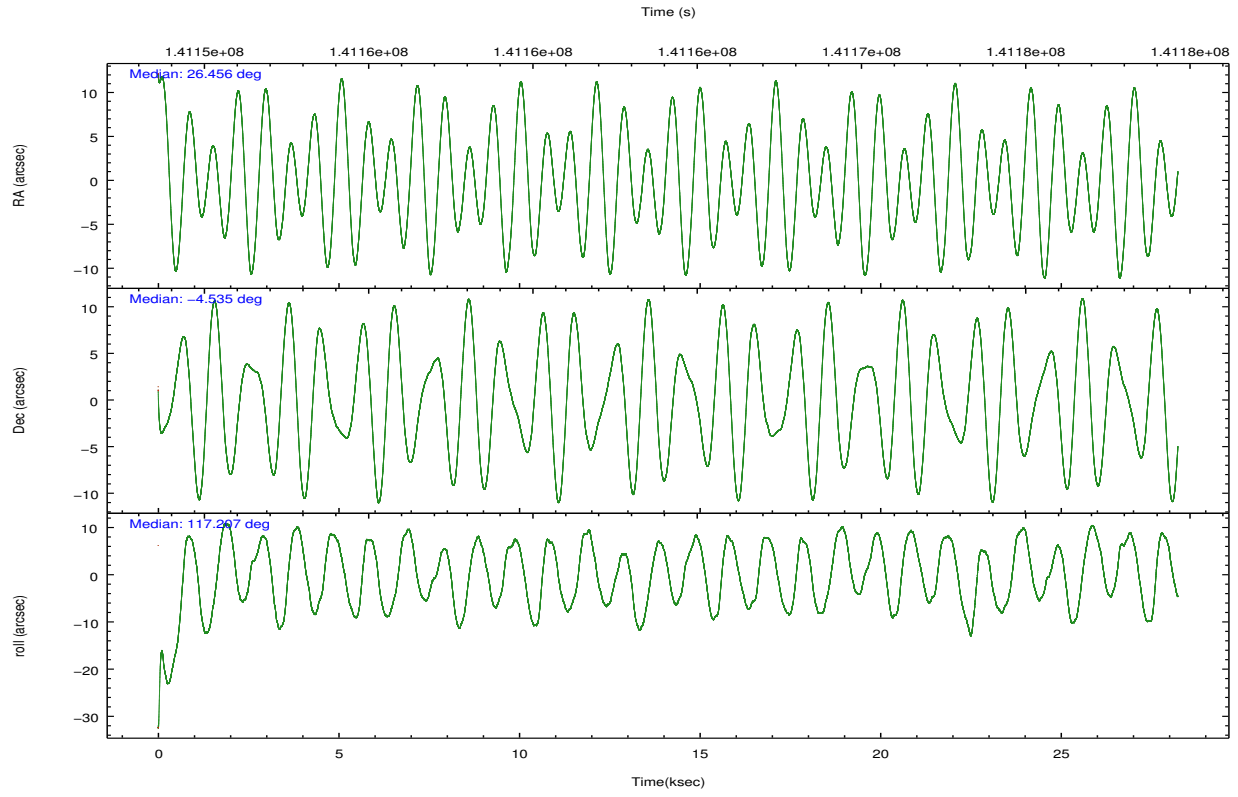
	ccd 0	ccd 1	ccd 2	ccd 3	ccd 6	ccd 8		ccd 0	ccd 1	ccd 2	ccd 3	ccd 6	ccd 8
level 1 events	174615	175287	186984	188644	192738	249346	grade 0 events	11356	11139	11095	11061	12072	18379
rejected events	149961	149961	163308	164742	167184	197425		6%	6%	5%	5%	6%	7%
rejected %	85%	85%	87%	87%	86%	79%	grade 1 events	90	91	95	110	103	164
								0%	0%	0%	0%	0%	0%
							grade 2 events	5057	5165	4869	4685	4753	10897
								2%	2%	2%	2%	2%	4%
							grade 3 events	2267	2350	1921	2163	2248	5253
								1%	1%	1%	1%	1%	2%
							grade 4 events	2001	2261	1997	2046	2092	4840
								1%	1%	1%	1%	1%	1%
							grade 5 events	7030	7693	6510	7540	7972	10732
								4%	4%	3%	3%	4%	4%
							grade 6 events	3993	4429	3816	3965	4408	12573
								2%	2%	2%	2%	2%	5%
							grade 7 events	142821	142159	156681	157074	159090	186508
								81%	81%	83%	83%	82%	74%

2.2 Compared Parameters

Parameter	Planned	Actual	Parameter	Planned	Actual
Instrument	ACIS	ACIS	Obspar format version number	7	7
Detector	ACIS-012368	ACIS-012368	Obspar file type	PREDICTED	ACTUAL
Grating	NONE	NONE	Obspar update status	NONE	UPDATED
Data mode	VFAINT	VFAINT	Number of optional ACIS chips dropped	0	0
Observation mode	POINTING	POINTING	On-chip summing requested	N	N
[deg] Pointing RA	26.479604	26.45646658392209	Subarray requested	NONE	NONE
[deg] Pointing Dec	-4.550183	-4.535430043104683	Alternating exposures requested	N	N
[deg] Pointing Roll	117.001806	117.2086579314694	[s] Primary exposure time	0.000000	3.2
[mm] SIM focus pos	-0.782348	-0.7809083437167272			
[mm] SIM defocus	0	0.001439871863259334			
[mm] SIM translation stage pos	-233.592463	-233.5874344608287			
[mm] SIM translation stage offset	0	-0.005018542100998502			
[s] Observation start time (MET)	141150109.184000	141149072.80447			
Observation start date	2002-06-22T16:20:45	2002-06-22T16:04:32			
[s] Observation end time (MET)	141178231.184000	141178545.14318			
Observation end date	2002-06-23T00:09:27	2002-06-23T00:15:45			
Read mode	TIMED	TIMED			

2.3 Aspect



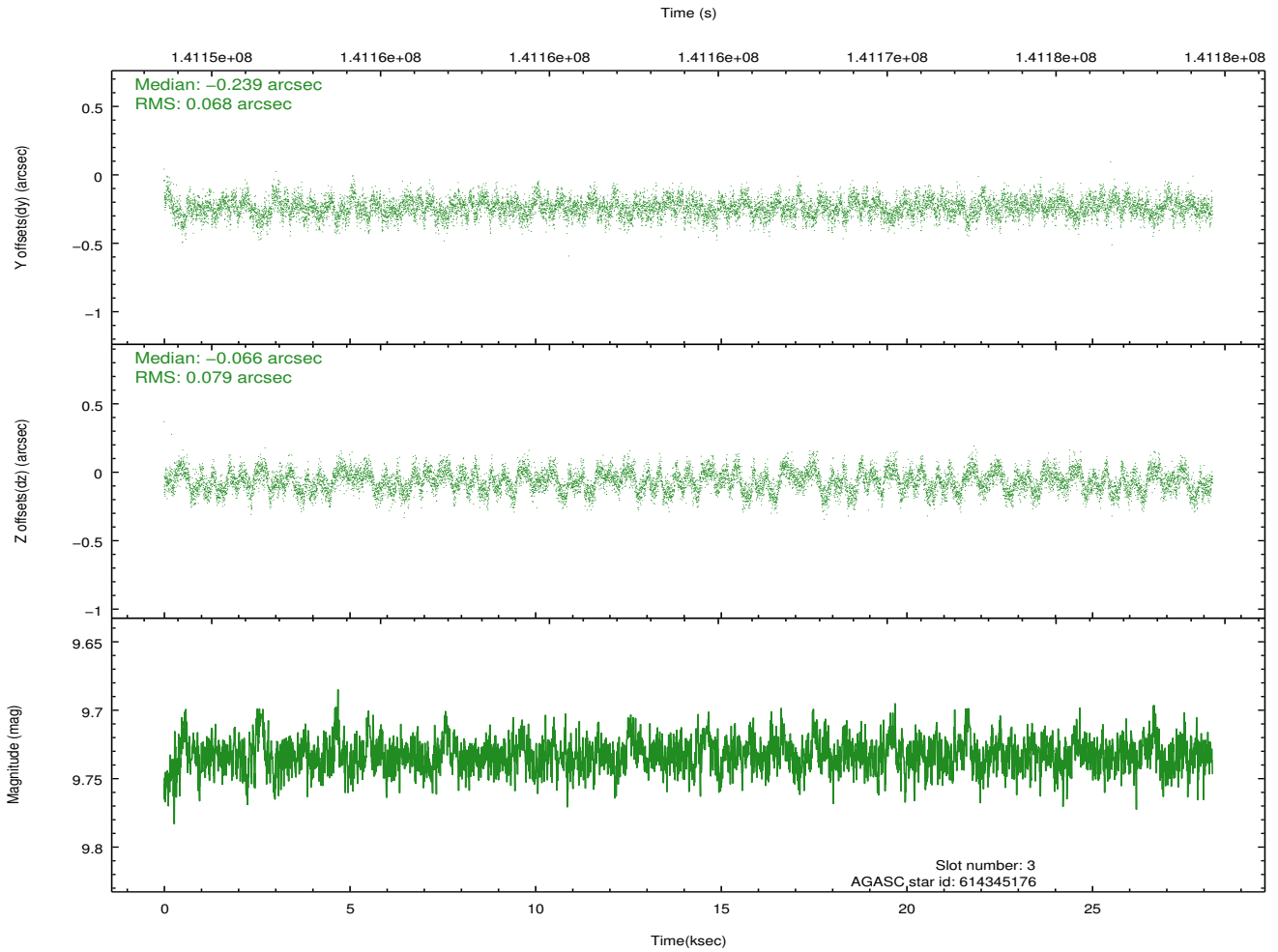
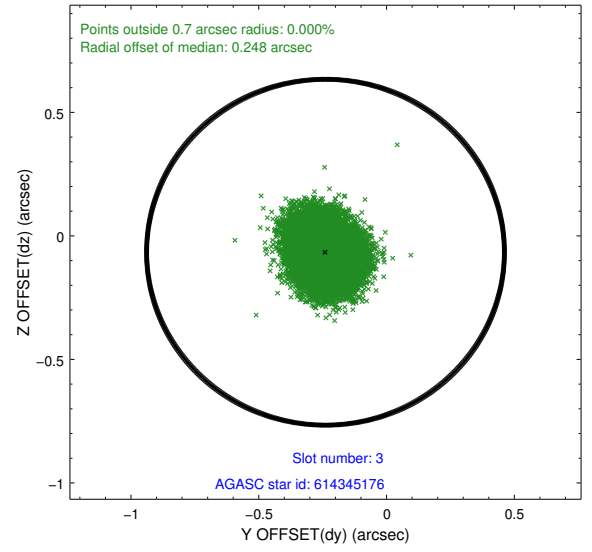
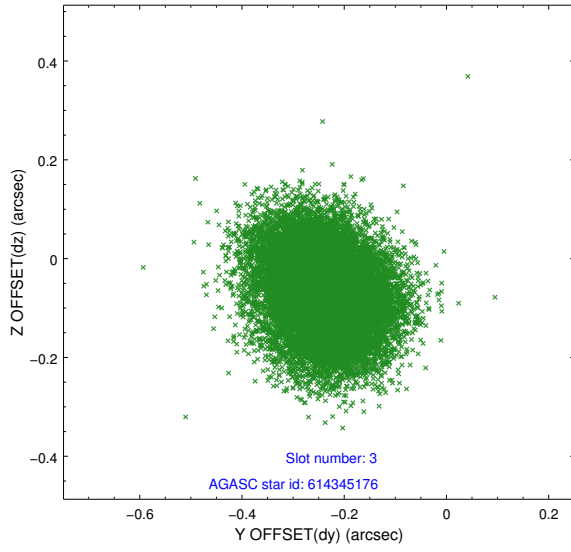


Slot Statistics

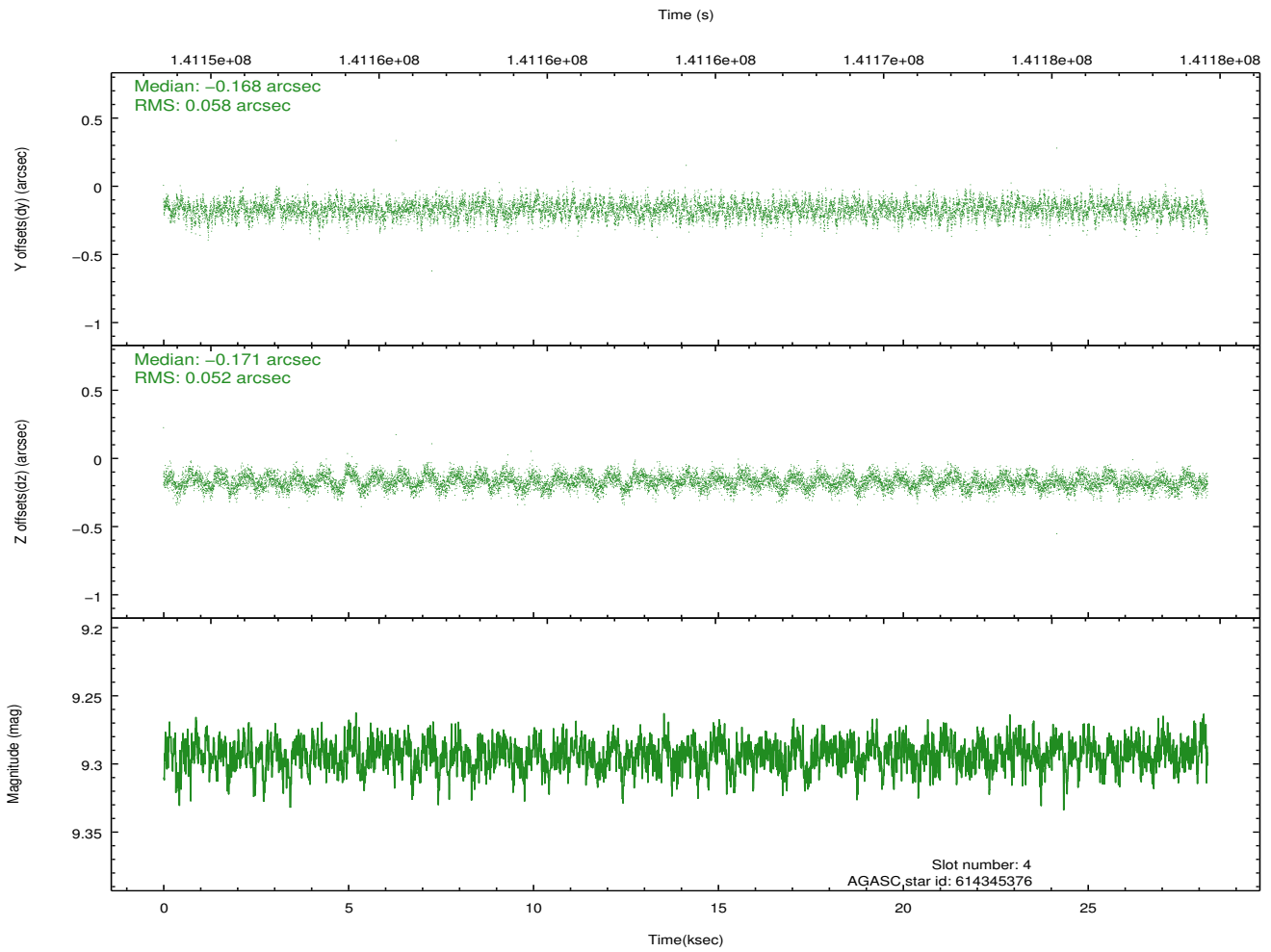
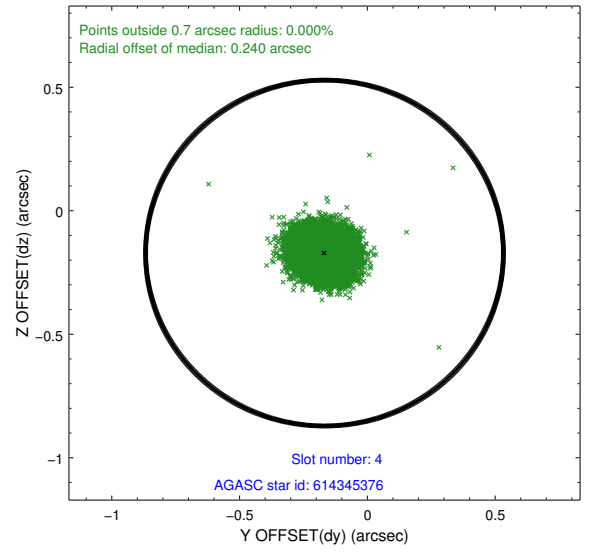
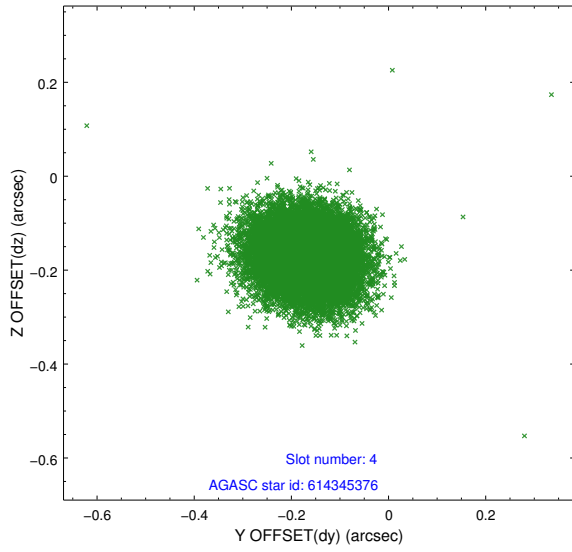
slot	status	id	mag	n_pts	med_dy	med_dz	dr1	dr2	ra	dec	mean_y	mean_z
0	FID	ACIS-I-1	7.24	6888	-0.020	0.054	0.019	0.041	0.000000	0.000000	937.27	-831.20
1	FID	ACIS-I-5	7.24	6886	-0.044	0.040	0.010	0.016	0.000000	0.000000	-1810.79	1066.28
2	FID	ACIS-I-6	7.26	6888	-0.028	-0.023	0.012	0.028	0.000000	0.000000	402.75	1710.79
3	GUIDE	614345176	9.73	13770	-0.239	-0.066	0.113	0.176	25.877982	-4.292809	1804.04	1503.69
4	GUIDE	614345376	9.29	13763	-0.168	-0.171	0.083	0.131	25.702118	-4.344424	1924.71	2150.87
5	GUIDE	614479384	9.41	13772	0.246	-0.083	0.117	0.182	26.458684	-5.277867	-2300.79	1256.03
6	GUIDE	614480960	10.20	13733	0.026	0.358	0.169	0.285	27.041824	-4.322525	-187.96	-2169.77
7	GUIDE	614480816	10.49	13743	0.138	-0.040	0.171	0.277	26.301496	-5.028963	-1246.79	1351.25

2.4 Star Slots

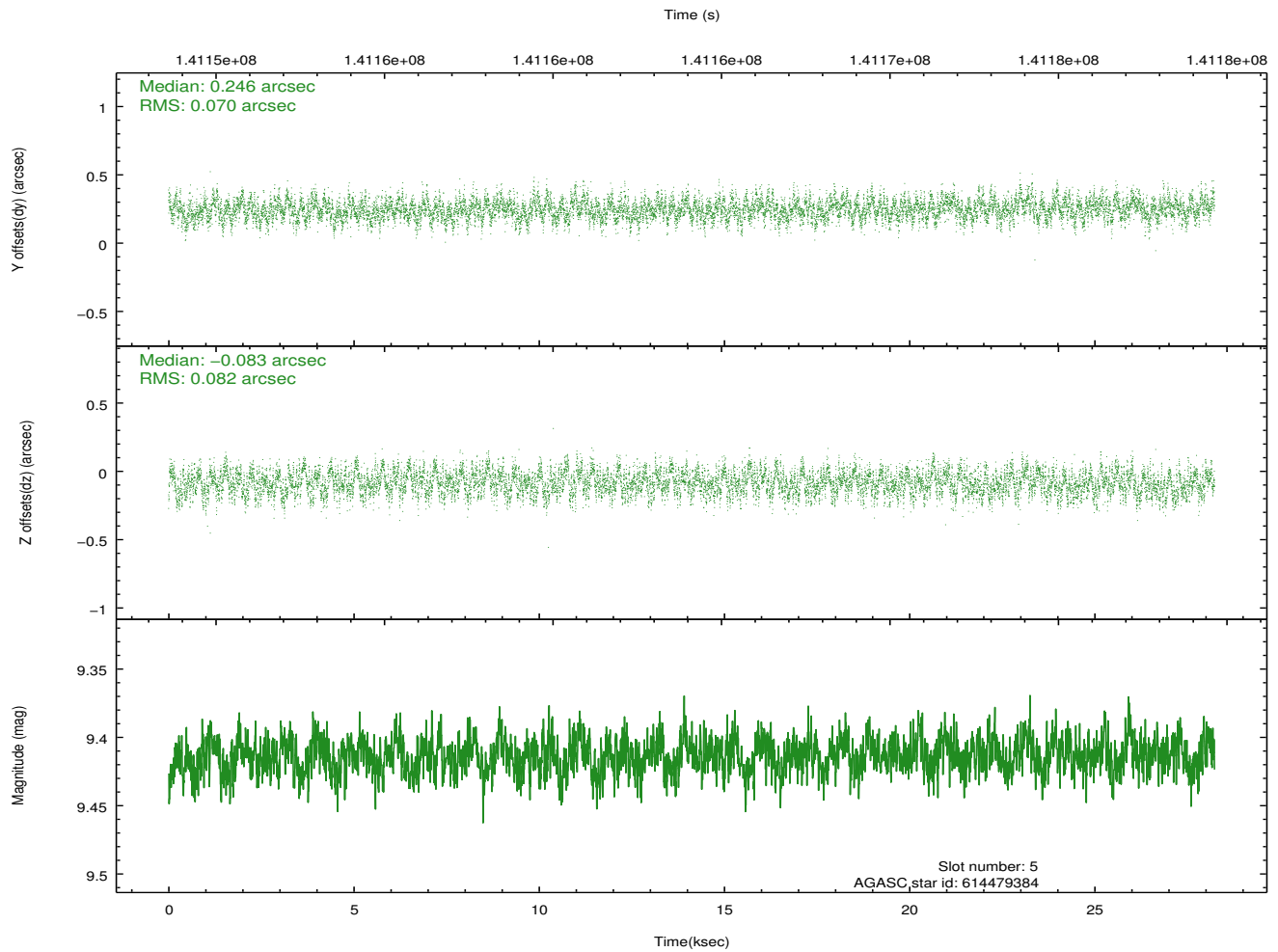
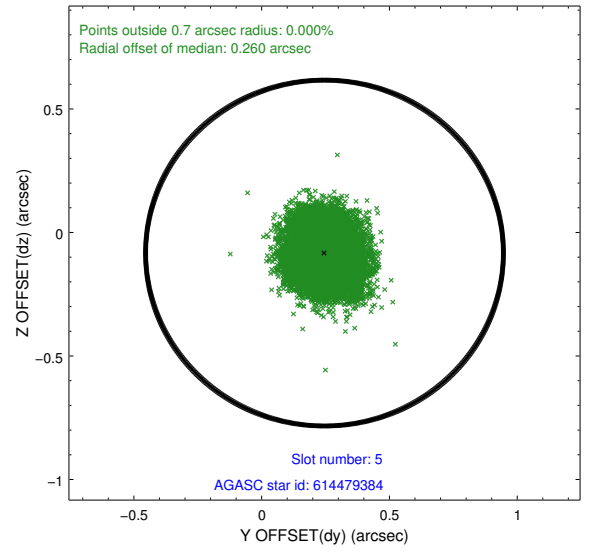
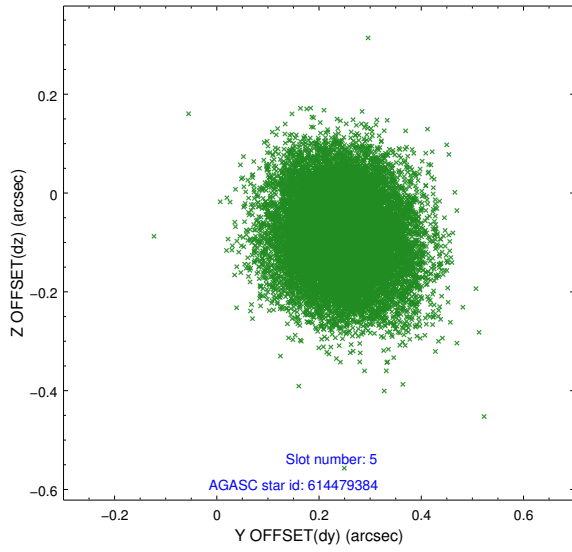
2.4.1 Slot 3



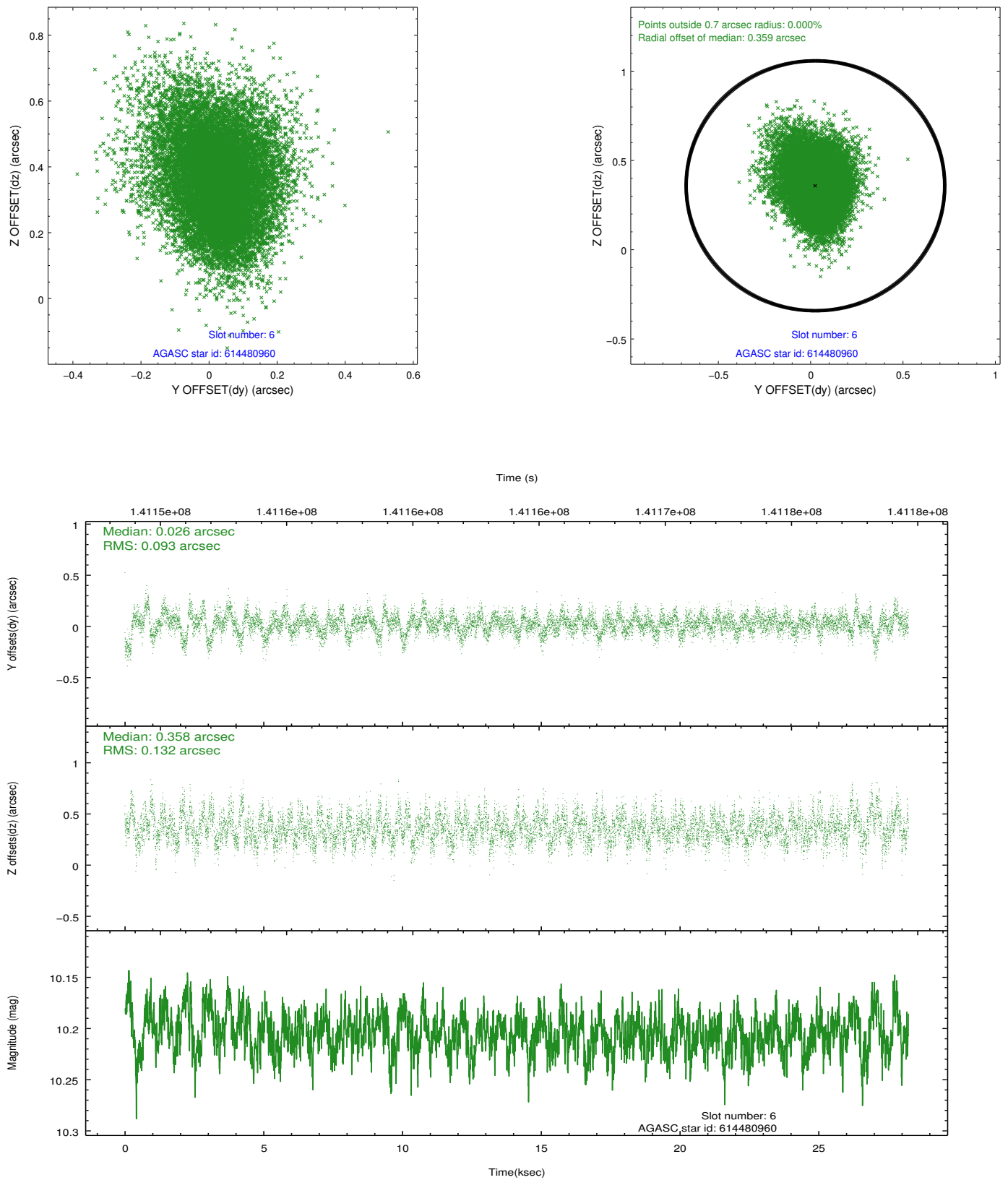
2.4.2 Slot 4



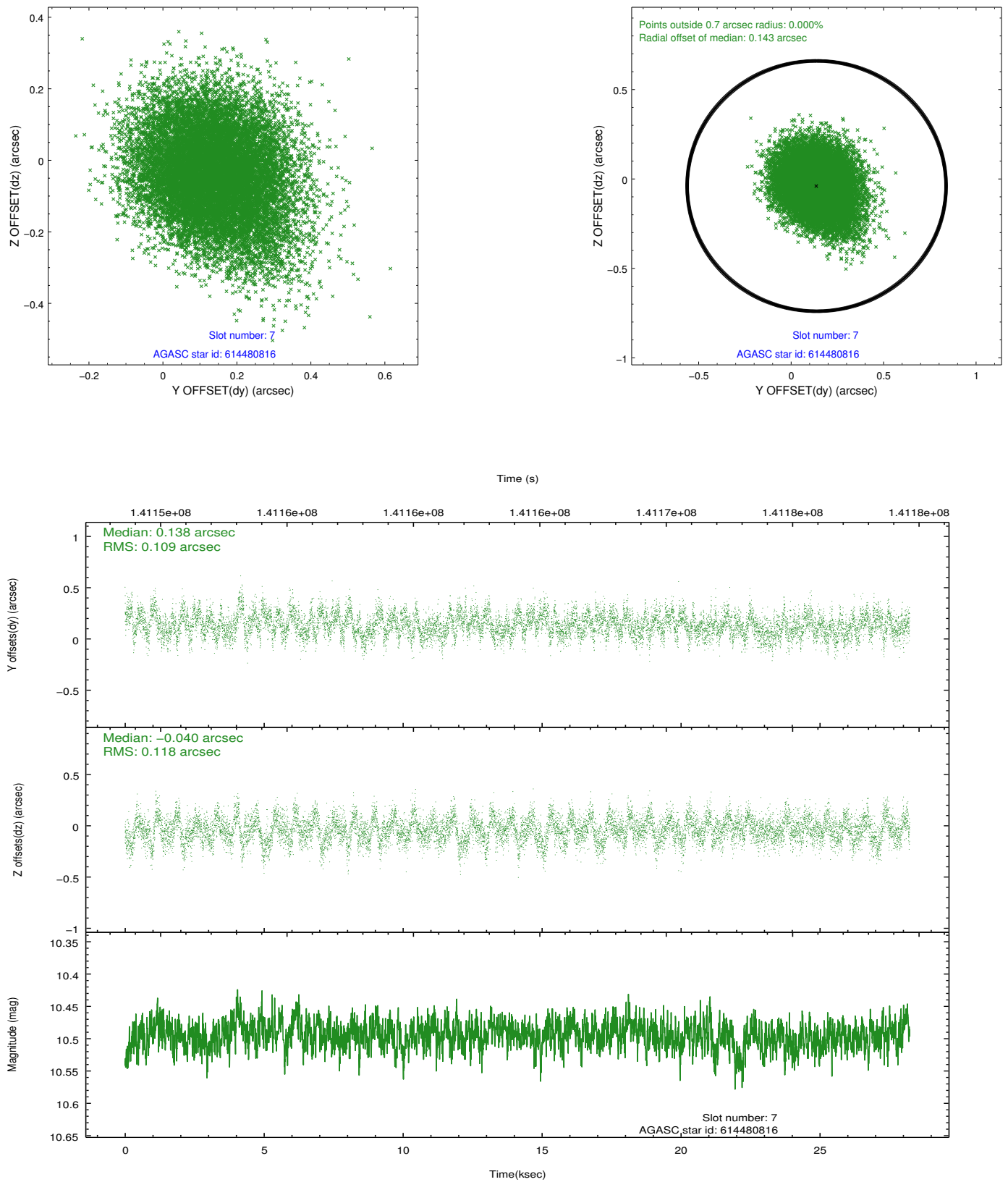
2.4.3 Slot 5



2.4.4 Slot 6

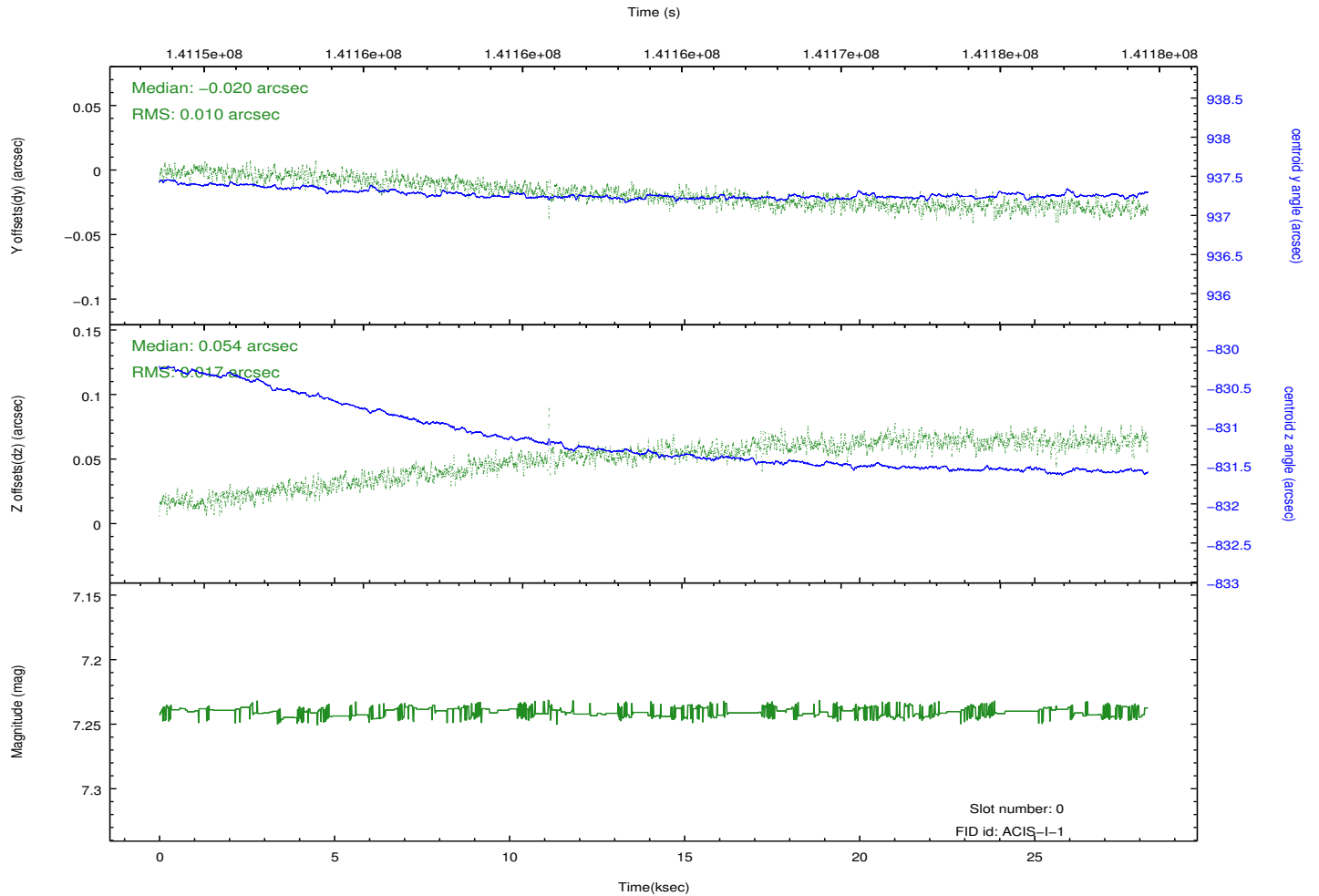
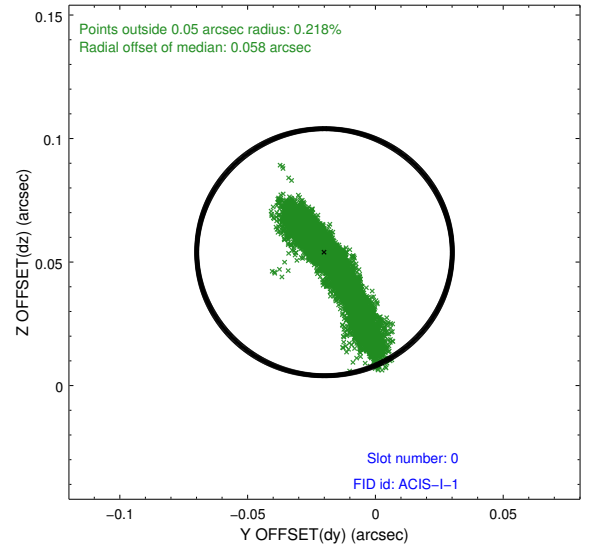
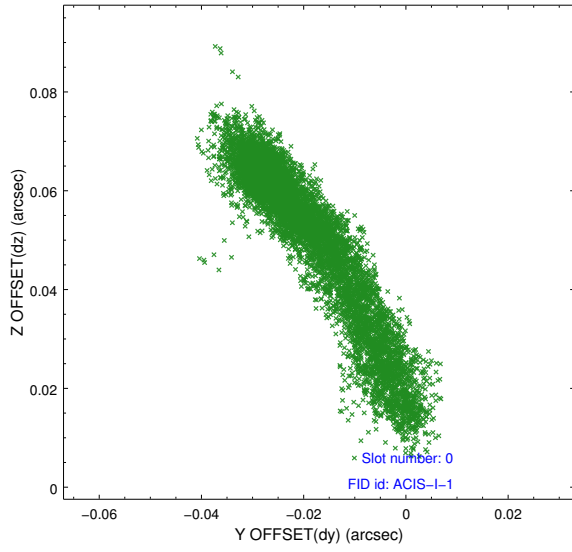


2.4.5 Slot 7

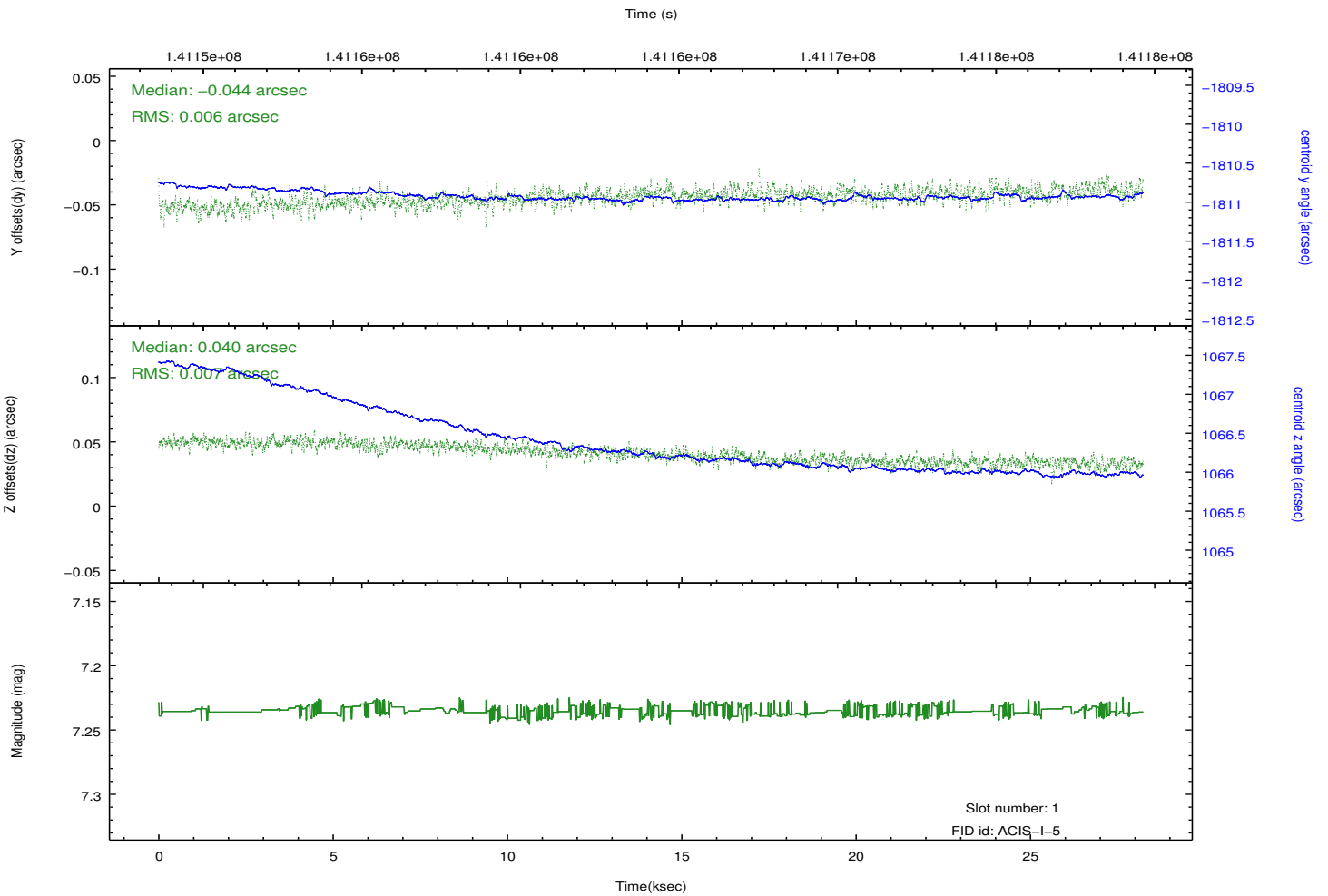
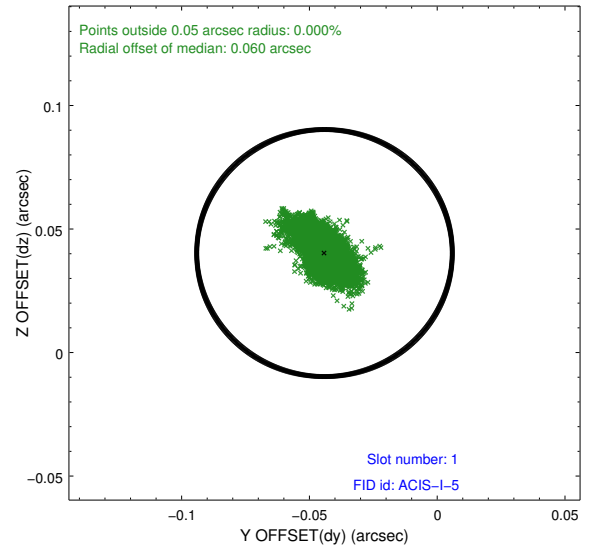
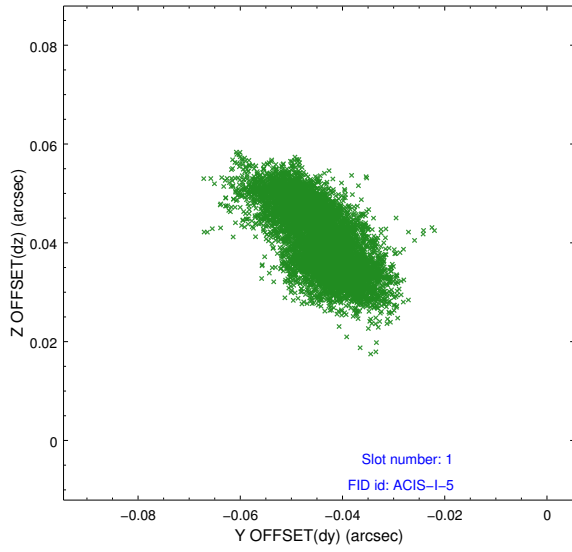


2.5 FID Slots

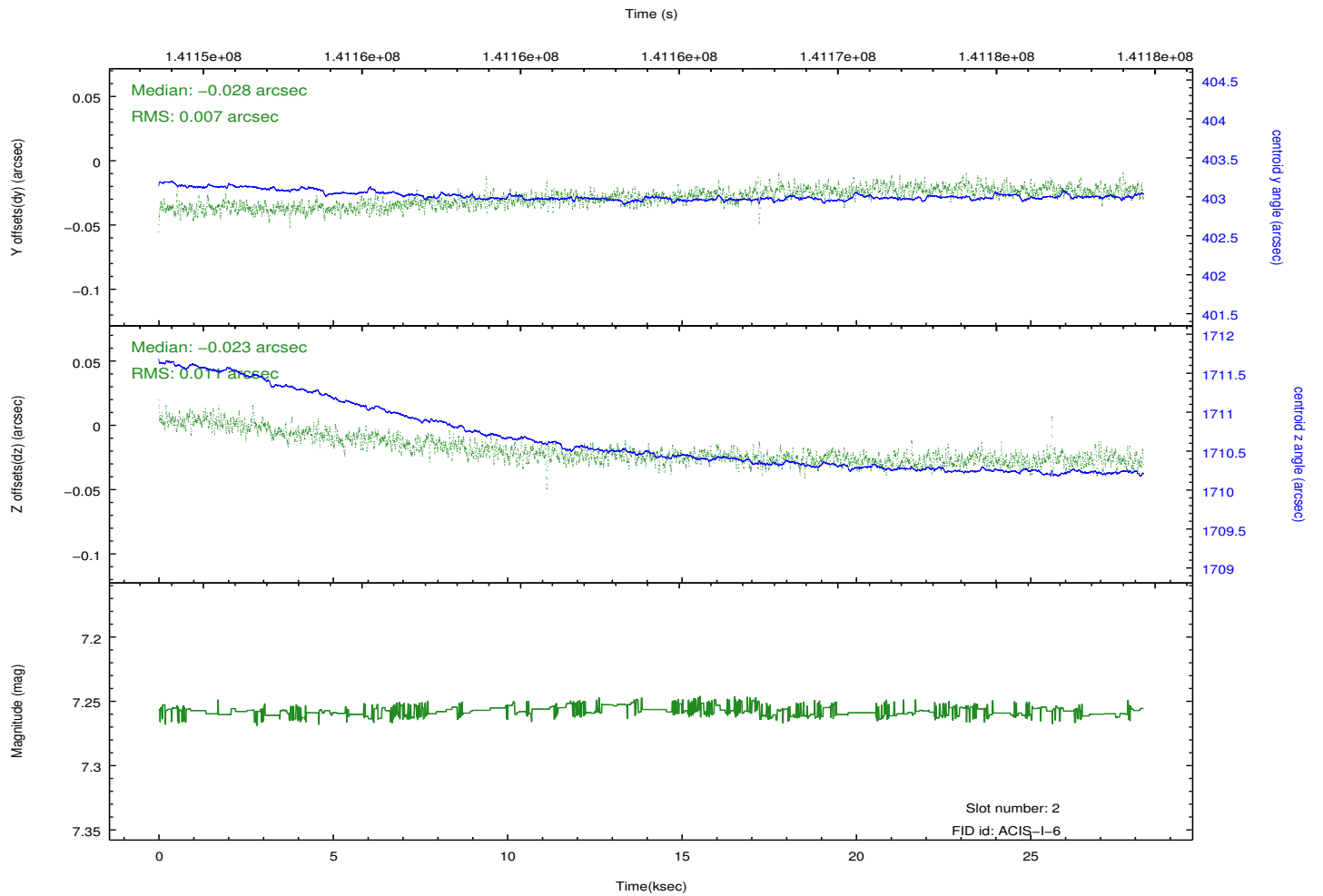
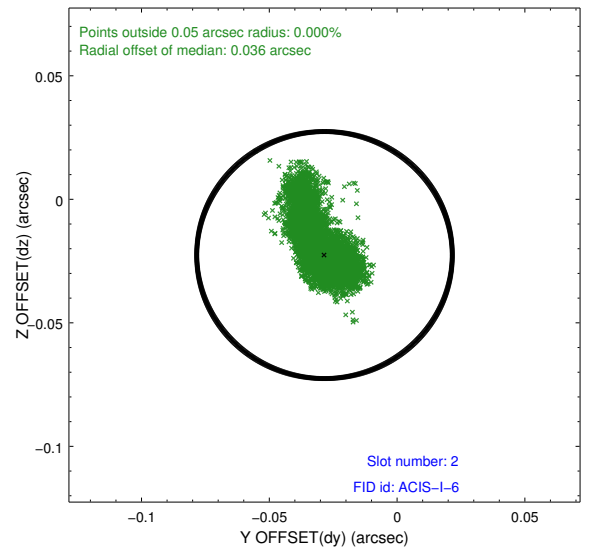
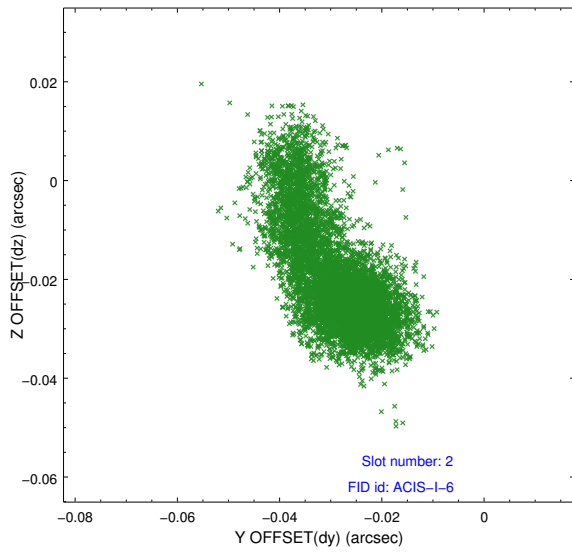
2.5.1 Slot 0



2.5.2 Slot 1



2.5.3 Slot 2



A Summary

A.1 Status

V&V Scientist	Jen Lauer
V&V Date (YYYY-MM-DD)	2012.10.19
V&V Edition	1
V&V Disposition and Status	OK
V&V Charge Time	28.227

A.2 Comments