

V&V Reference Report

L2 ASCDS Version : 8.4.5

Observation 3356 - L2 Version 3
Chandra X-Ray Center

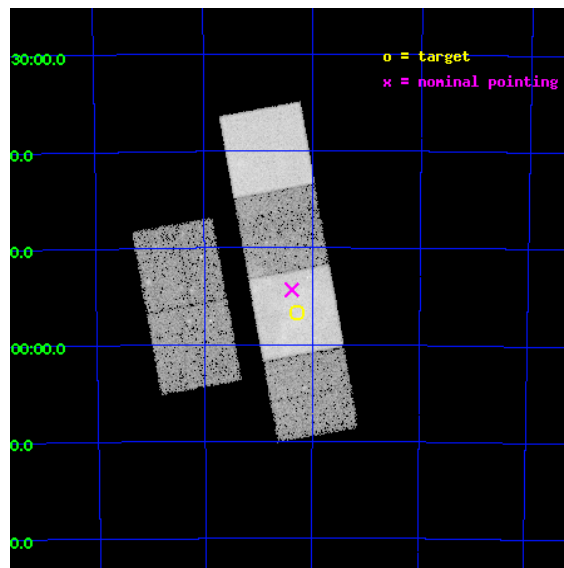
L2 Processing Date : Oct 14 2012

Contents

1	Front	2
2	OBI	3
2.1	OBI	3
2.1.1	Images	3
2.1.2	Bias	3
2.1.3	Parameters	4
2.1.4	Events	4
2.2	Compared Parameters	5
2.3	Aspect	6
2.4	Star Slots	9
2.4.1	Slot 3	9
2.4.2	Slot 4	10
2.4.3	Slot 5	11
2.4.4	Slot 6	12
2.4.5	Slot 7	13
2.5	FID Slots	14
2.5.1	Slot 0	14
2.5.2	Slot 1	15
2.5.3	Slot 2	16
A	Summary	17
A.1	Status	17
A.2	Comments	17

1 Front

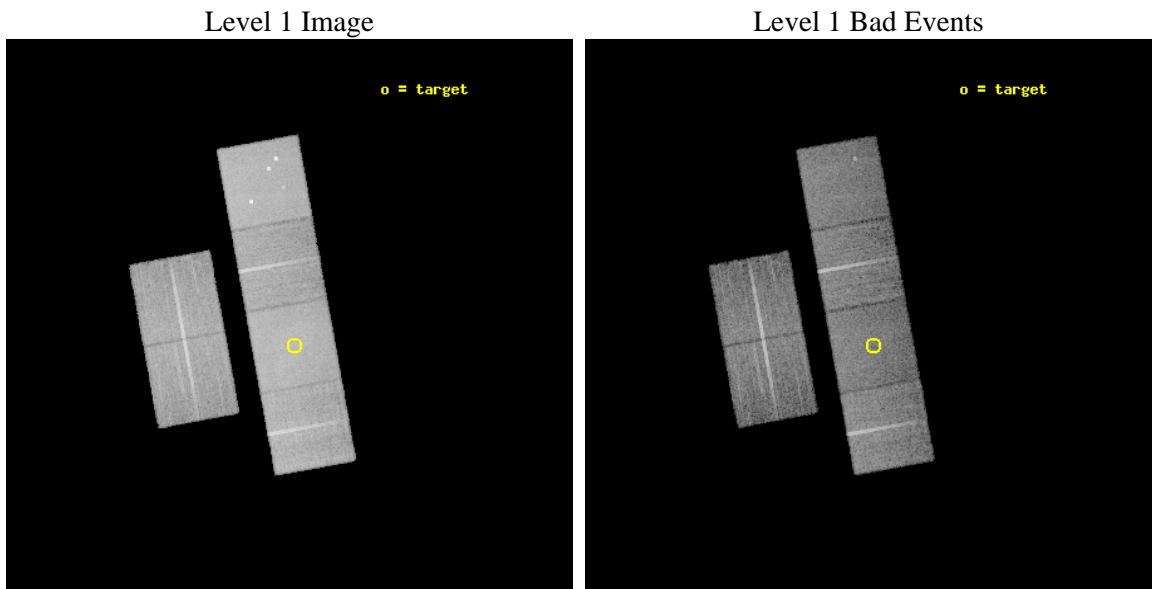
seq_num	900195	Sequence number
obs_id	3356	Observation id
title	X-RAY EMISSION MECHANISMS AND EVOLUTION OF SUPERBUBBLES	Proposal t
observer	DR. Sally Oey	Principal investigator
object	DEM L152	Source name
dtcycle	0	
cycle	P	events from which exps? Prim/Second/Both
ra_targ	80.570833	Observer's specified target RA [deg]
dec_targ	-67.943889	Observer's specified target Dec [deg]
ra_nom	80.594186708536	Nominal RA [deg]
dec_nom	-67.905784278365	Nominal Dec [deg]
roll_nom	79.678272896308	Nominal Roll [deg]
revision	3	Processing version of data
ontime	18953.51299414	Sum of GTIs [s]
livetime	18713.512200173	Livetime [s]
ontime2	18953.554034144	Sum of GTIs [s]
ontime3	18950.148903877	Sum of GTIs [s]
ontime5	18953.471954137	Sum of GTIs [s]
ontime6	18953.430914134	Sum of GTIs [s]
ontime7	18953.51299414	Sum of GTIs [s]
ontime8	18953.348834157	Sum of GTIs [s]
l2events	200228	Number of level 2 events



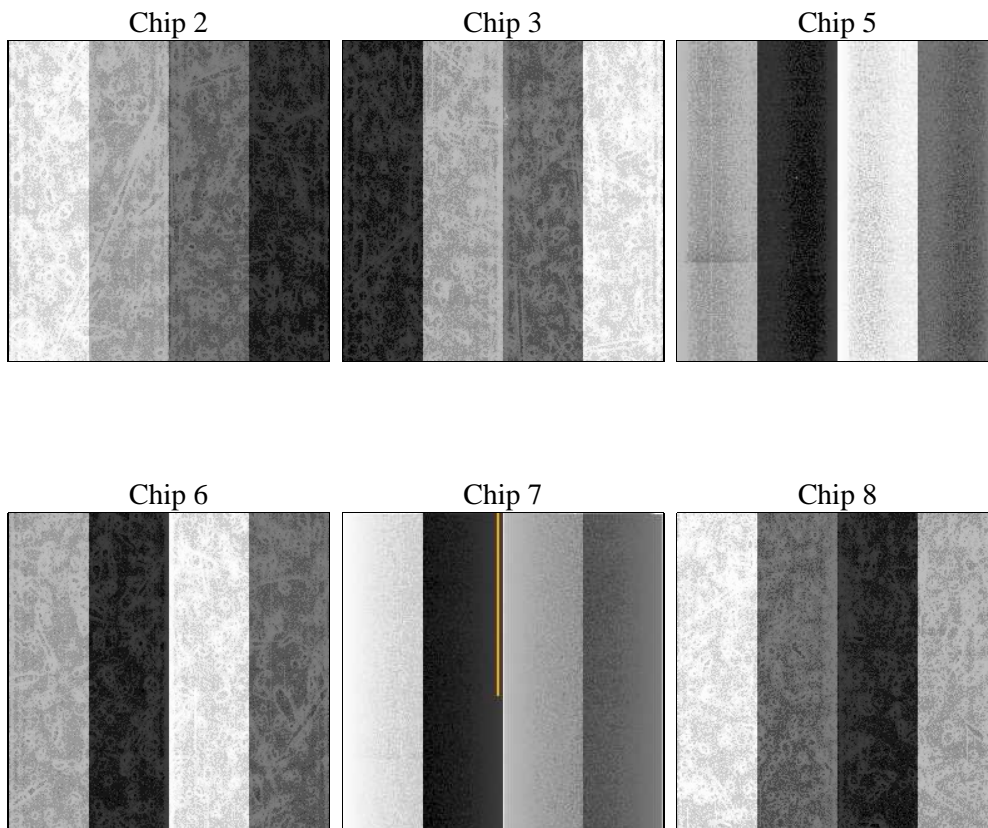
2 OBI

2.1 OBI

2.1.1 Images



2.1.2 Bias



2.1.3 Parameters

obi_num	0	Obi number	sched_exp_time	18992.474000	[s] Scheduled observation exposure time
ascdsver	8.4.5	Processing system revision	ontime	18953.51299414	Sum of GTIs [s]
caldbver	4.5.2	 	ontime2	18953.554034144	Sum of GTIs [s]
date	2012-10-14T19:28:51	Date and time of file creation	ontime3	18950.148903877	Sum of GTIs [s]
revision	3	Processing version of data	ontime5	18953.471954137	Sum of GTIs [s]
			ontime6	18953.430914134	Sum of GTIs [s]
			ontime7	18953.51299414	Sum of GTIs [s]
			ontime8	18953.348834157	Sum of GTIs [s]
			l1events	836479	Number of level 1 events

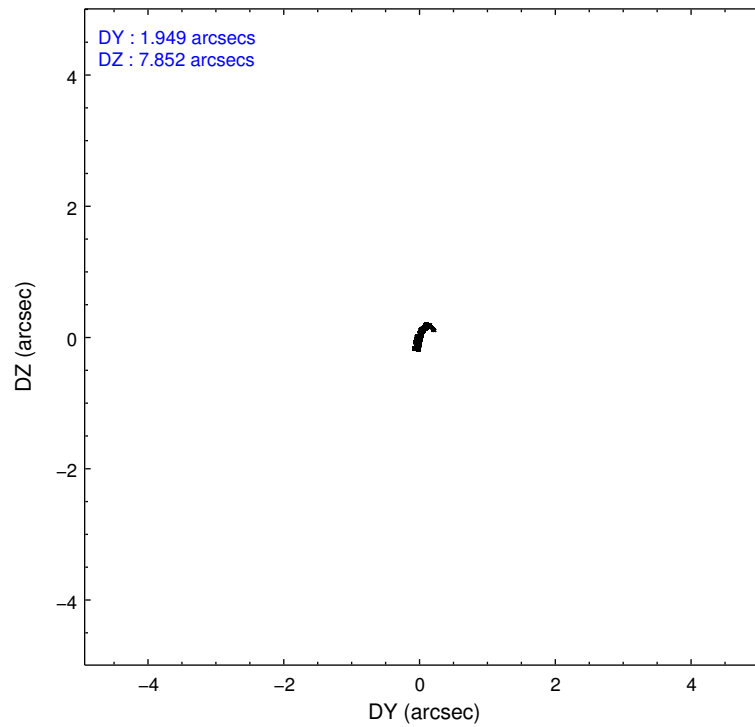
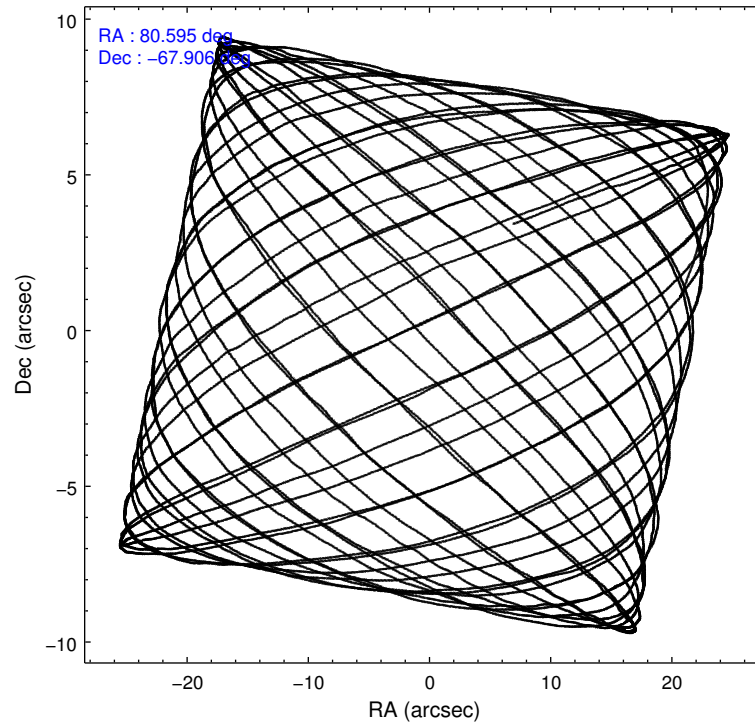
2.1.4 Events

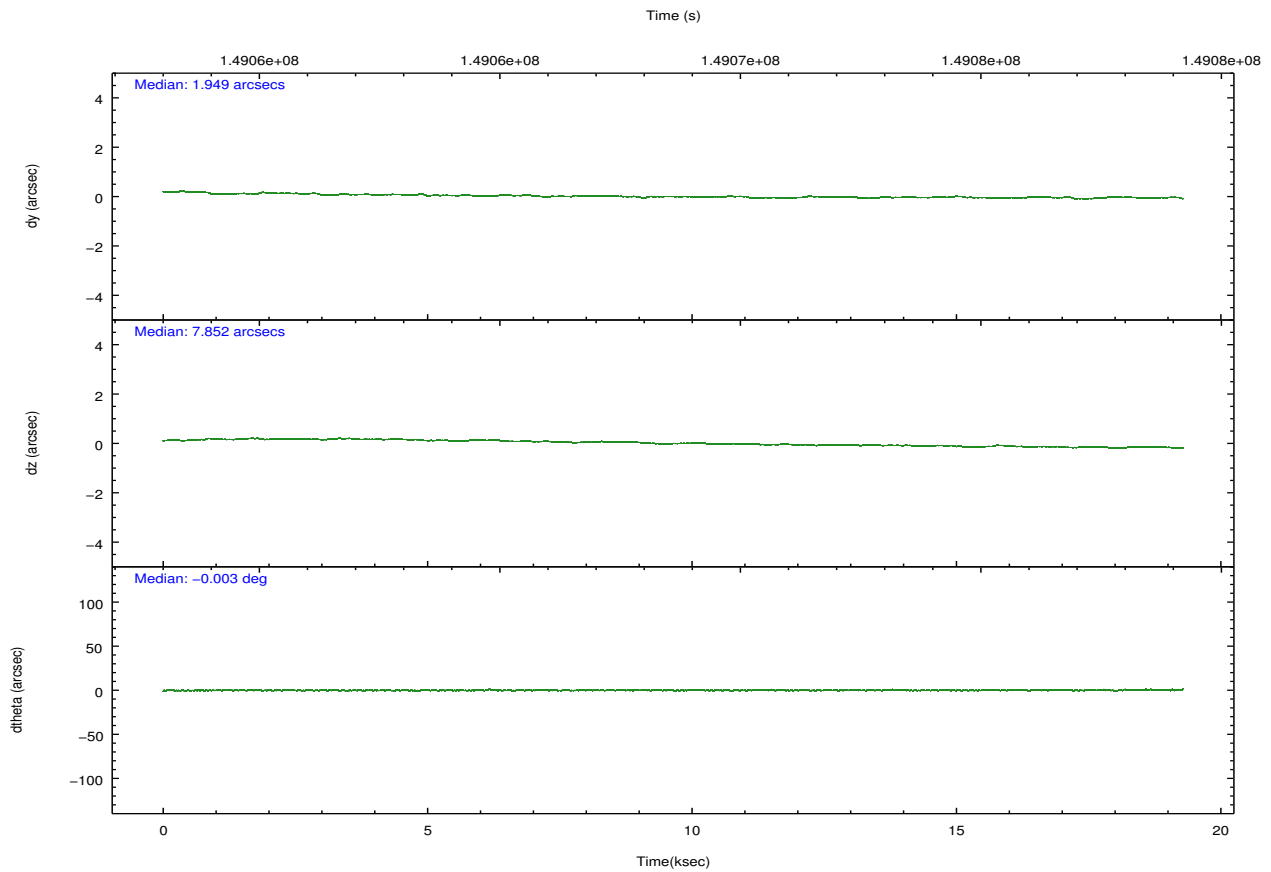
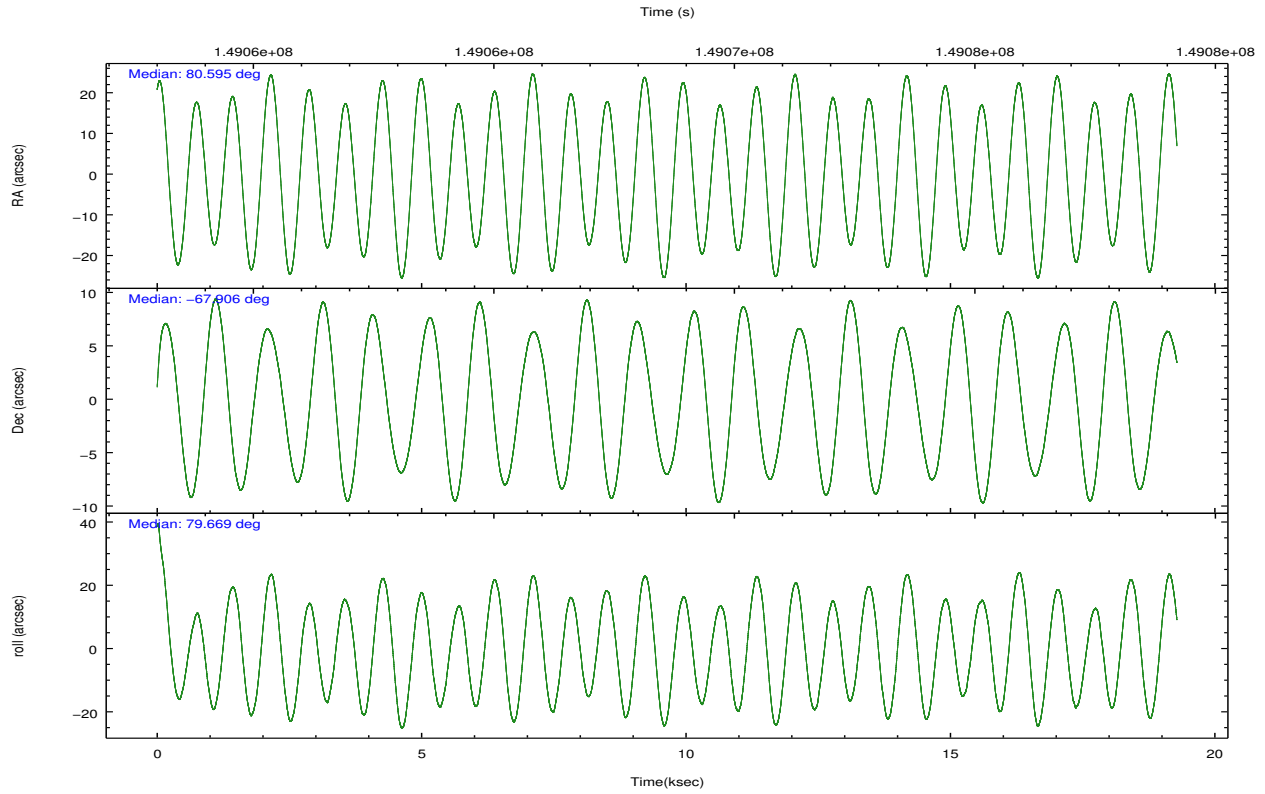
	ccd 2	ccd 3	ccd 5	ccd 6	ccd 7	ccd 8		ccd 2	ccd 3	ccd 5	ccd 6	ccd 7	ccd 8
level 1 events	116480	112738	174807	119516	165707	147231	grade 0 events	6609	6198	12567	7325	10289	9789
rejected events	102193	98956	92546	103821	89976	117309		5%	5%	7%	6%	6%	6%
rejected %	87%	87%	52%	86%	54%	79%	grade 1 events	66	66	533	48	142	96
								0%	0%	0%	0%	0%	0%
							grade 2 events	2760	2542	22864	2894	15654	6436
								2%	2%	13%	2%	9%	4%
							grade 3 events	1386	1329	3385	1375	7205	3294
								1%	1%	1%	1%	4%	2%
							grade 4 events	1306	1356	3255	1339	7155	3032
								1%	1%	1%	1%	4%	2%
							grade 5 events	4488	4765	12596	5287	14921	6797
								3%	4%	7%	4%	9%	4%
							grade 6 events	2229	2364	40222	2768	35455	7378
								1%	2%	23%	2%	21%	5%
							grade 7 events	97636	94118	79385	98480	74886	110409
								83%	83%	45%	82%	45%	74%

2.2 Compared Parameters

Parameter	Planned	Actual	Parameter	Planned	Actual
Instrument	ACIS	ACIS	Obspar format version number	7	7
Detector	ACIS-235678	ACIS-235678	Obspar file type	PREDICTED	ACTUAL
Grating	NONE	NONE	Obspar update status	NONE	UPDATED
Data mode	FAINT	FAINT	Number of optional ACIS chips dropped	0	0
Observation mode	POINTING	POINTING	On-chip summing requested	N	N
[deg] Pointing RA	80.619418	80.59418670853553	Subarray requested	NONE	NONE
[deg] Pointing Dec	-67.931329	-67.90578427836489	Alternating exposures requested	N	N
[deg] Pointing Roll	79.545027	79.67827289630802	[s] Primary exposure time	0.000000	3.2
[mm] SIM focus pos	-0.684267	-0.6828225247311905			
[mm] SIM defocus	0	0.001444936568705701			
[mm] SIM translation stage pos	-190.132523	-190.1400660498719			
[mm] SIM translation stage offset	0	0.00754346686406393			
[s] Observation start time (MET)	149059250.184000	149058233.99257			
Observation start date	2002-09-22T05:19:46	2002-09-22T05:03:53			
[s] Observation end time (MET)	149078242.184000	149078735.53092			
Observation end date	2002-09-22T10:36:18	2002-09-22T10:45:35			
Read mode	TIMED	TIMED			

2.3 Aspect



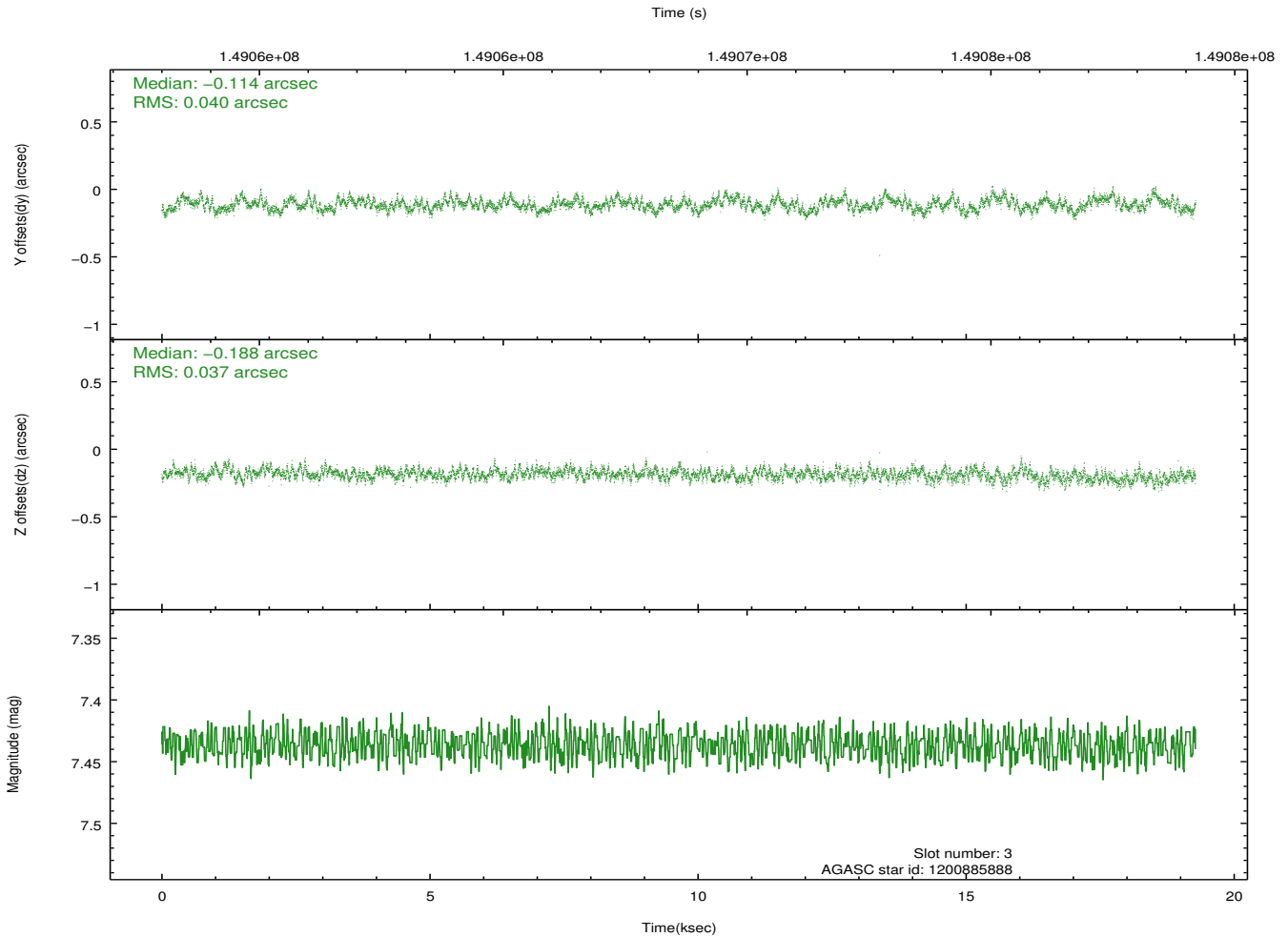
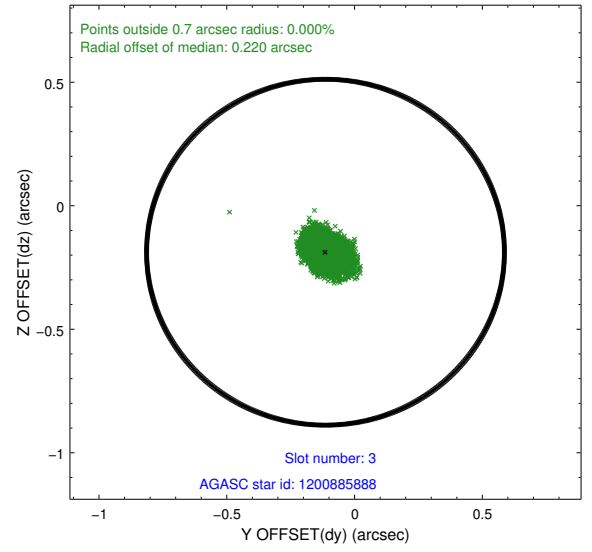
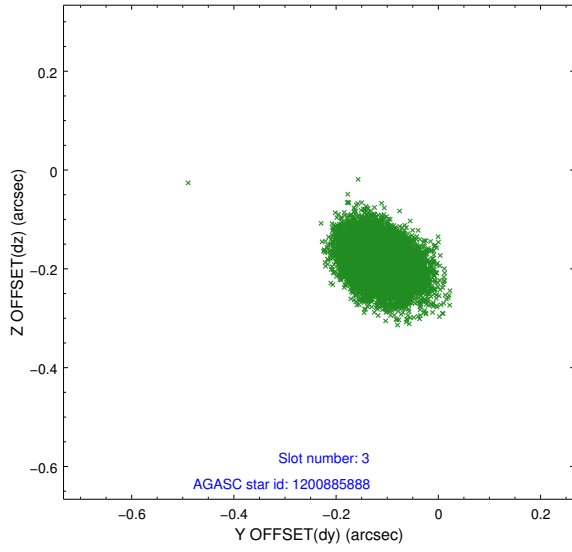


Slot Statistics

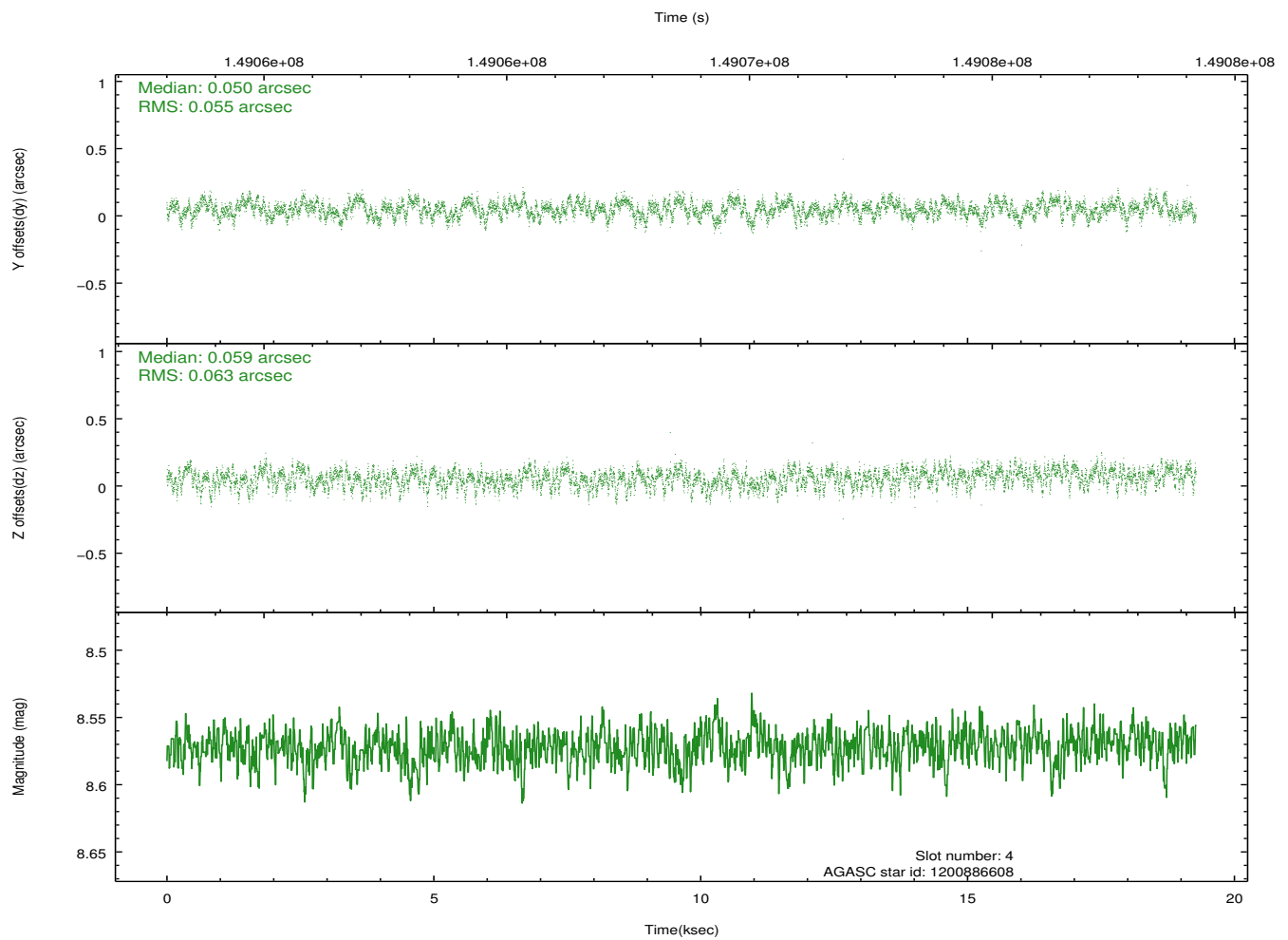
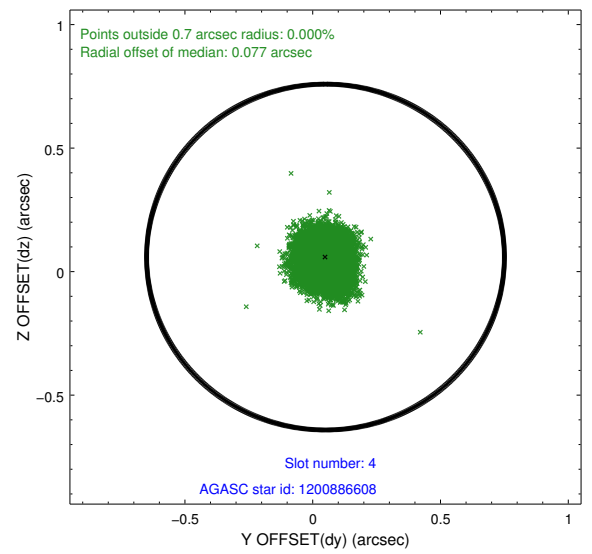
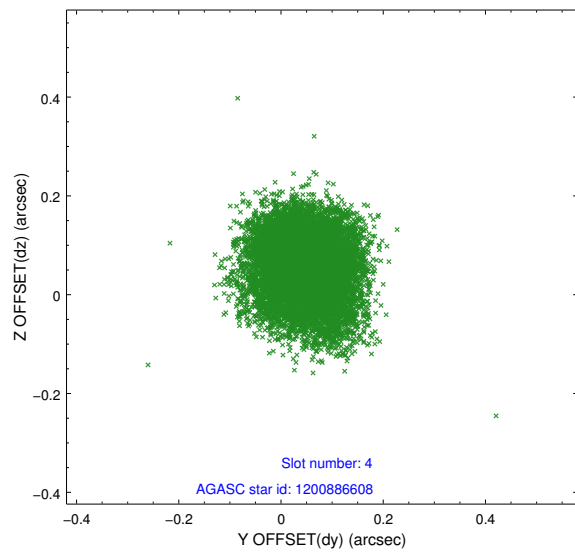
slot	status	id	mag	n_pts	med_dy	med_dz	dr1	dr2	ra	dec	mean_y	mean_z
0	FID	ACIS-S-2	7.11	4704	-0.025	-0.011	0.009	0.017	0.000000	0.000000	-754.63	-1729.05
1	FID	ACIS-S-4	7.20	4704	-0.007	0.015	0.008	0.024	0.000000	0.000000	2158.60	179.21
2	FID	ACIS-S-5	7.24	4703	0.002	0.005	0.009	0.018	0.000000	0.000000	-1807.16	173.15
3	GUIDE	1200885888	7.44	9407	-0.114	-0.188	0.058	0.093	78.906599	-68.068566	-936.23	2169.48
4	GUIDE	1200886608	8.57	9407	0.050	0.059	0.091	0.142	81.928825	-68.074201	-205.10	-1826.58
5	GUIDE	1165236552	9.06	9400	-0.004	-0.096	0.074	0.121	80.650919	-67.357955	2037.12	332.41
6	GUIDE	1200886080	9.49	9407	0.132	0.064	0.123	0.196	79.345965	-68.471974	-2236.82	1298.43
7	GUIDE	1200883008	9.62	9401	-0.069	0.163	0.131	0.218	82.494991	-67.740162	1102.26	-2395.86

2.4 Star Slots

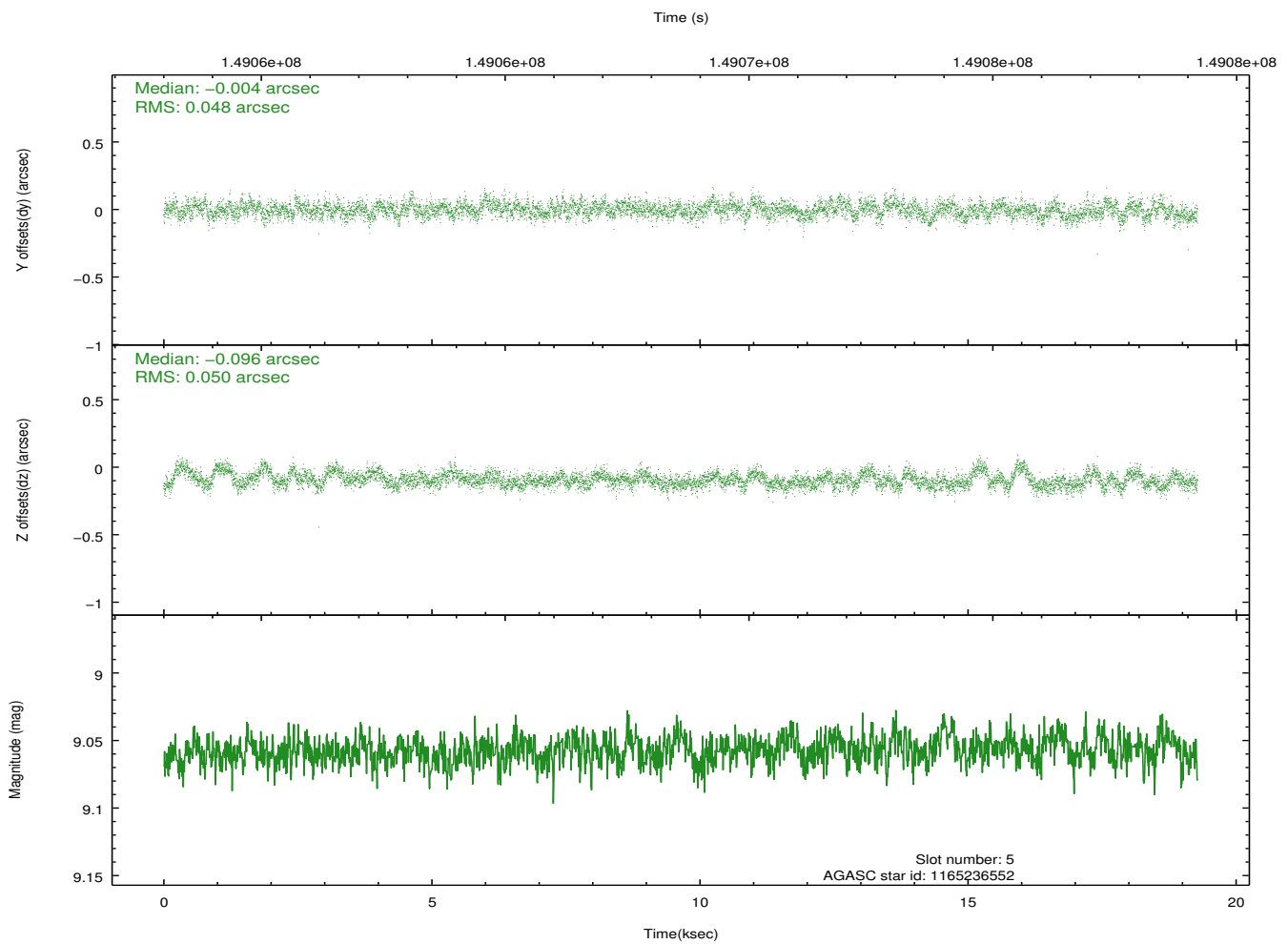
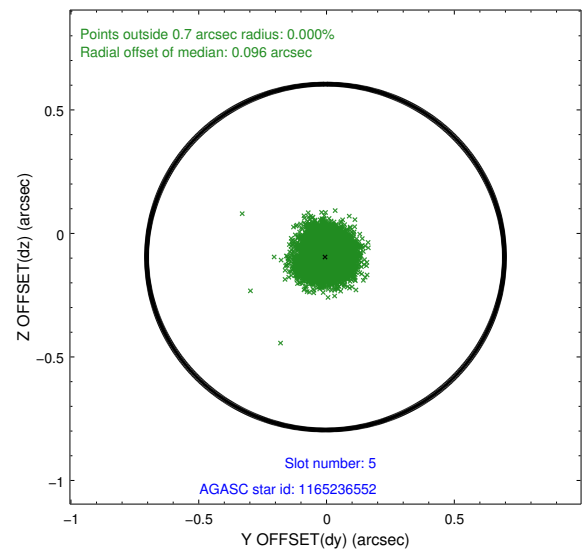
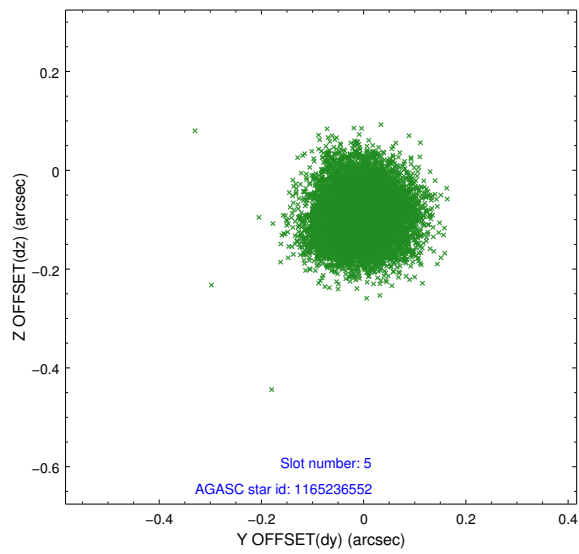
2.4.1 Slot 3



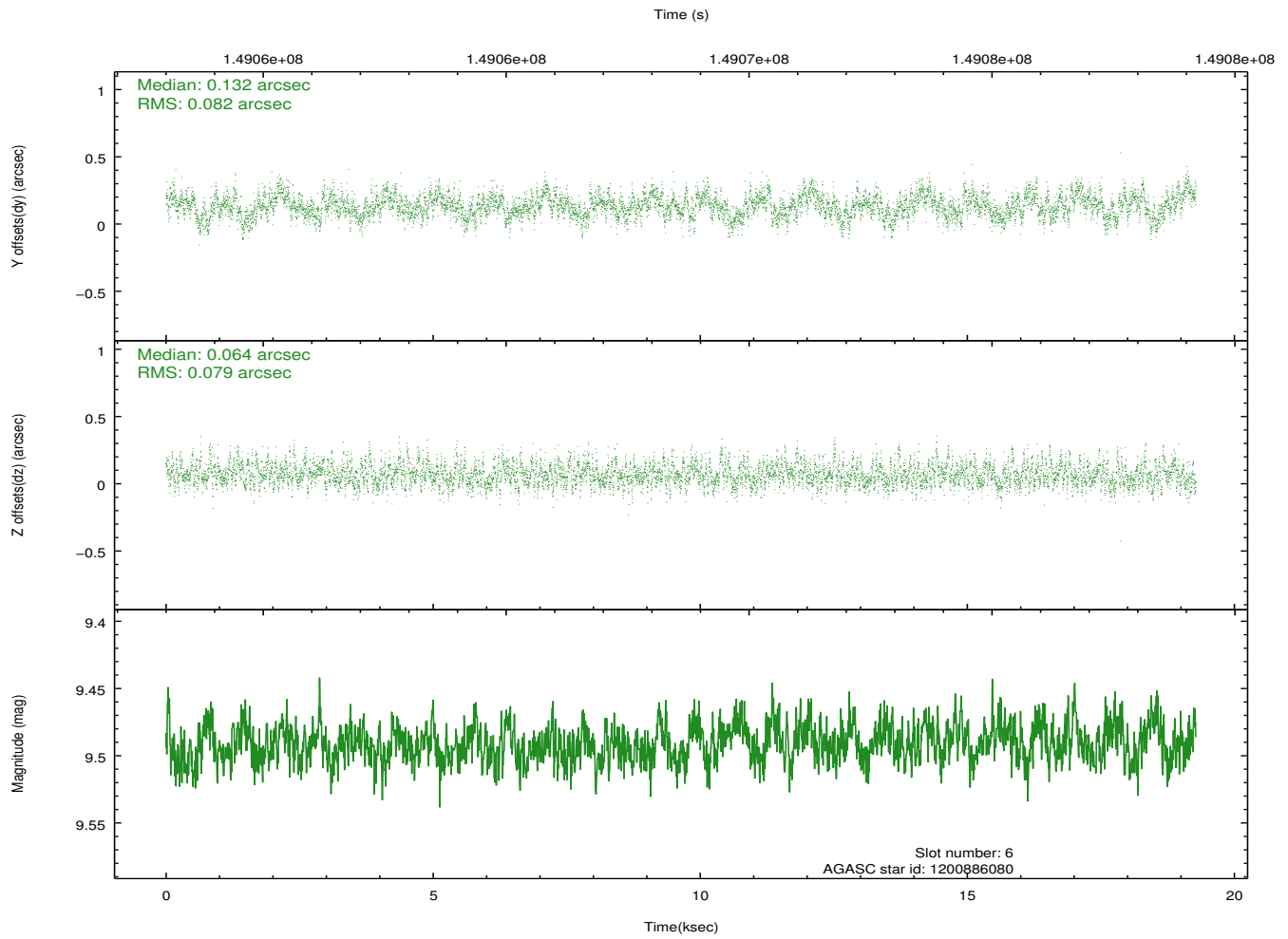
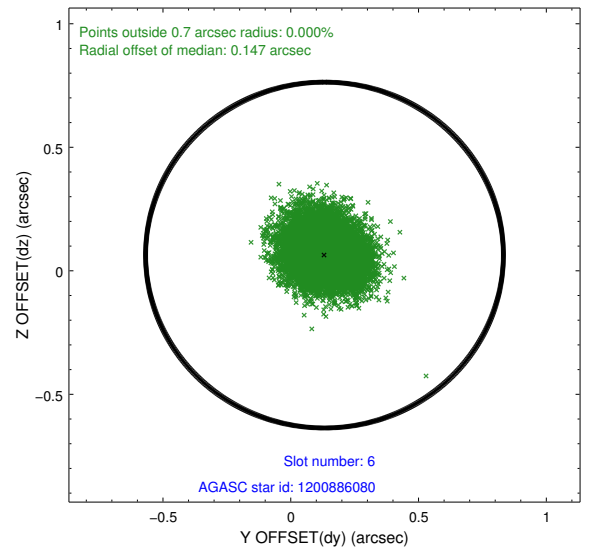
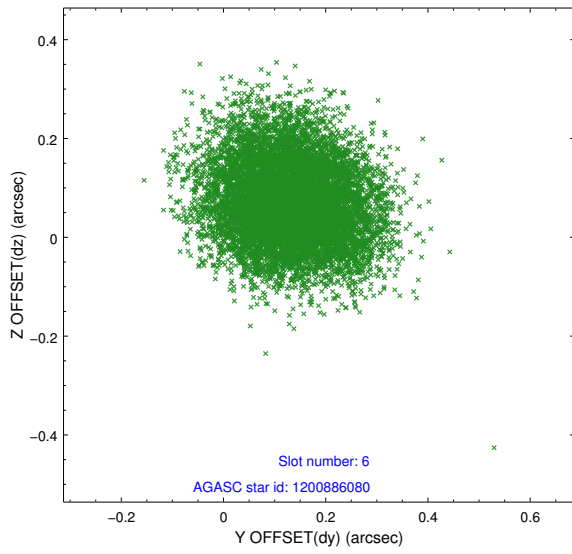
2.4.2 Slot 4



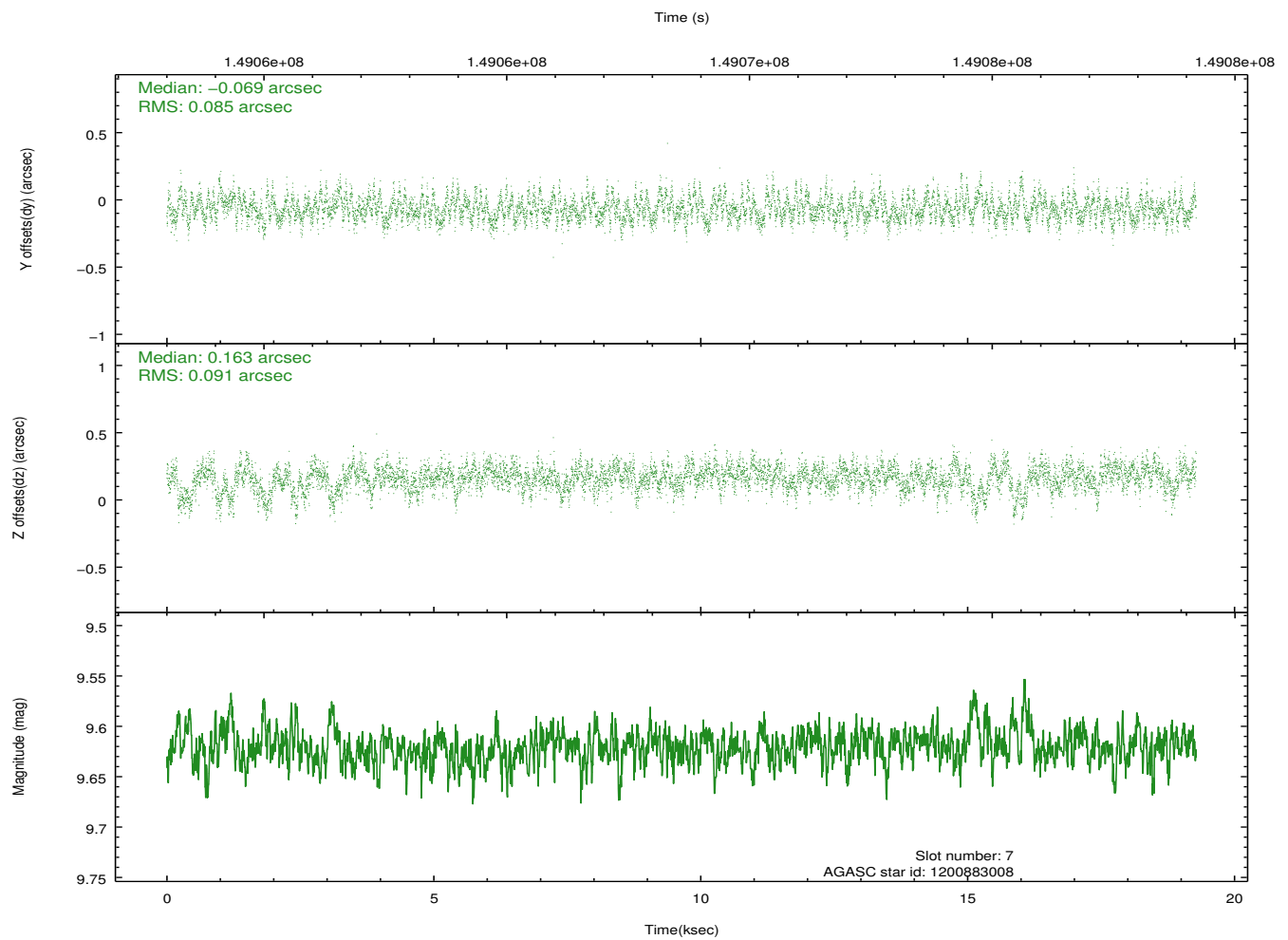
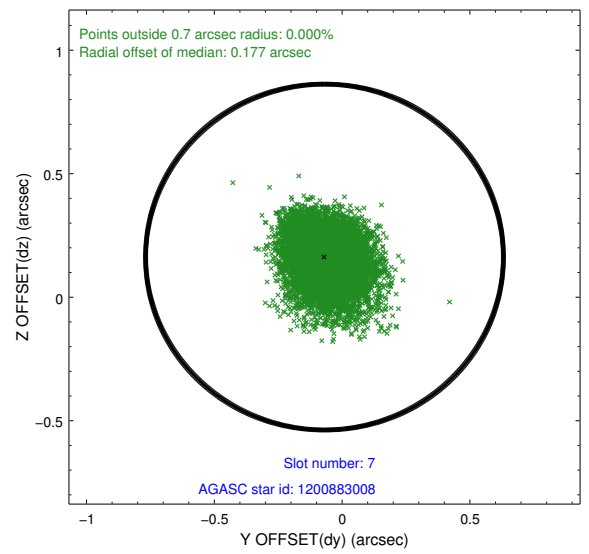
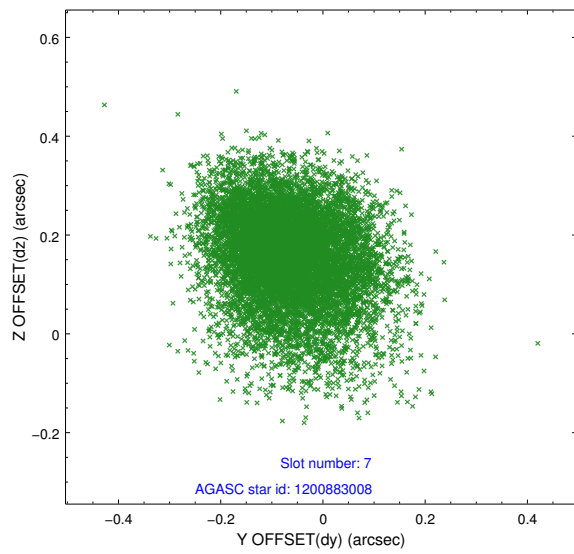
2.4.3 Slot 5



2.4.4 Slot 6

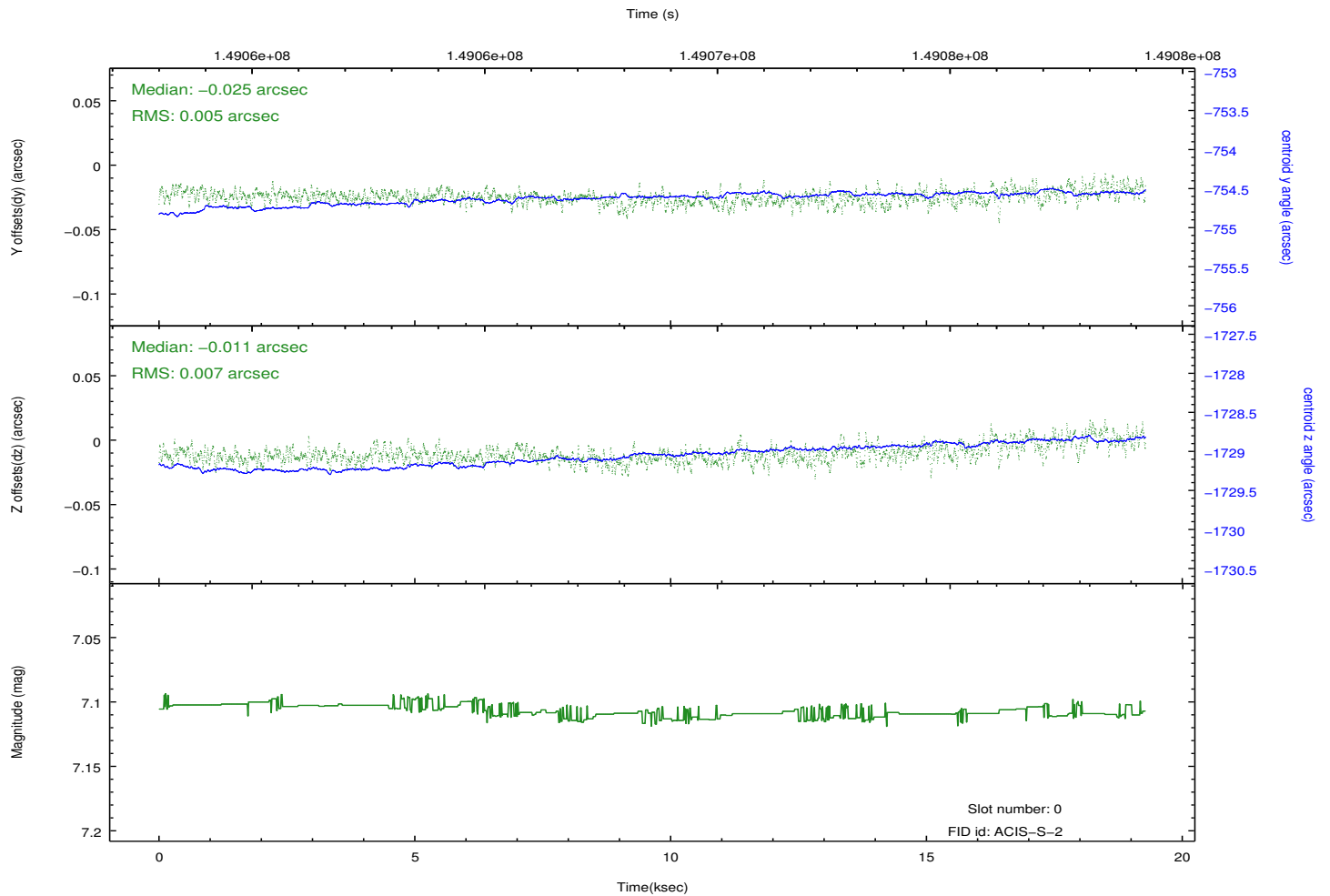
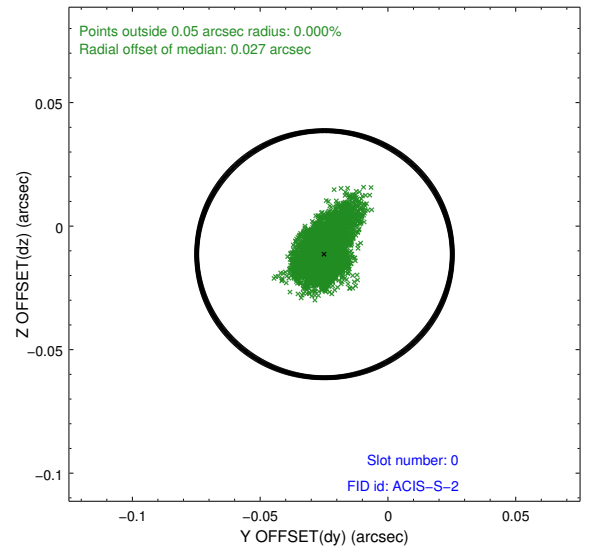
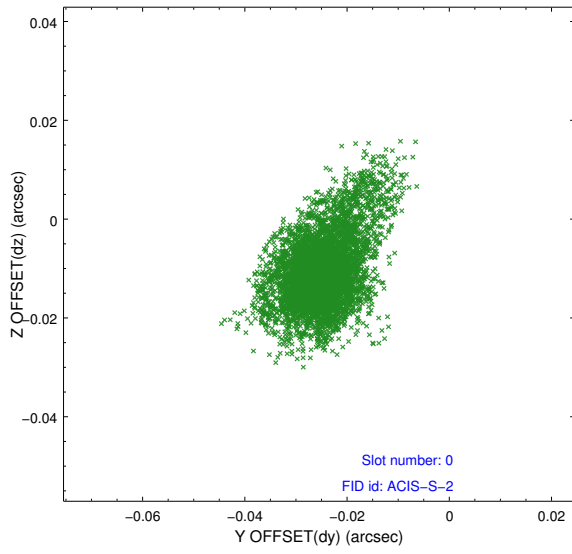


2.4.5 Slot 7

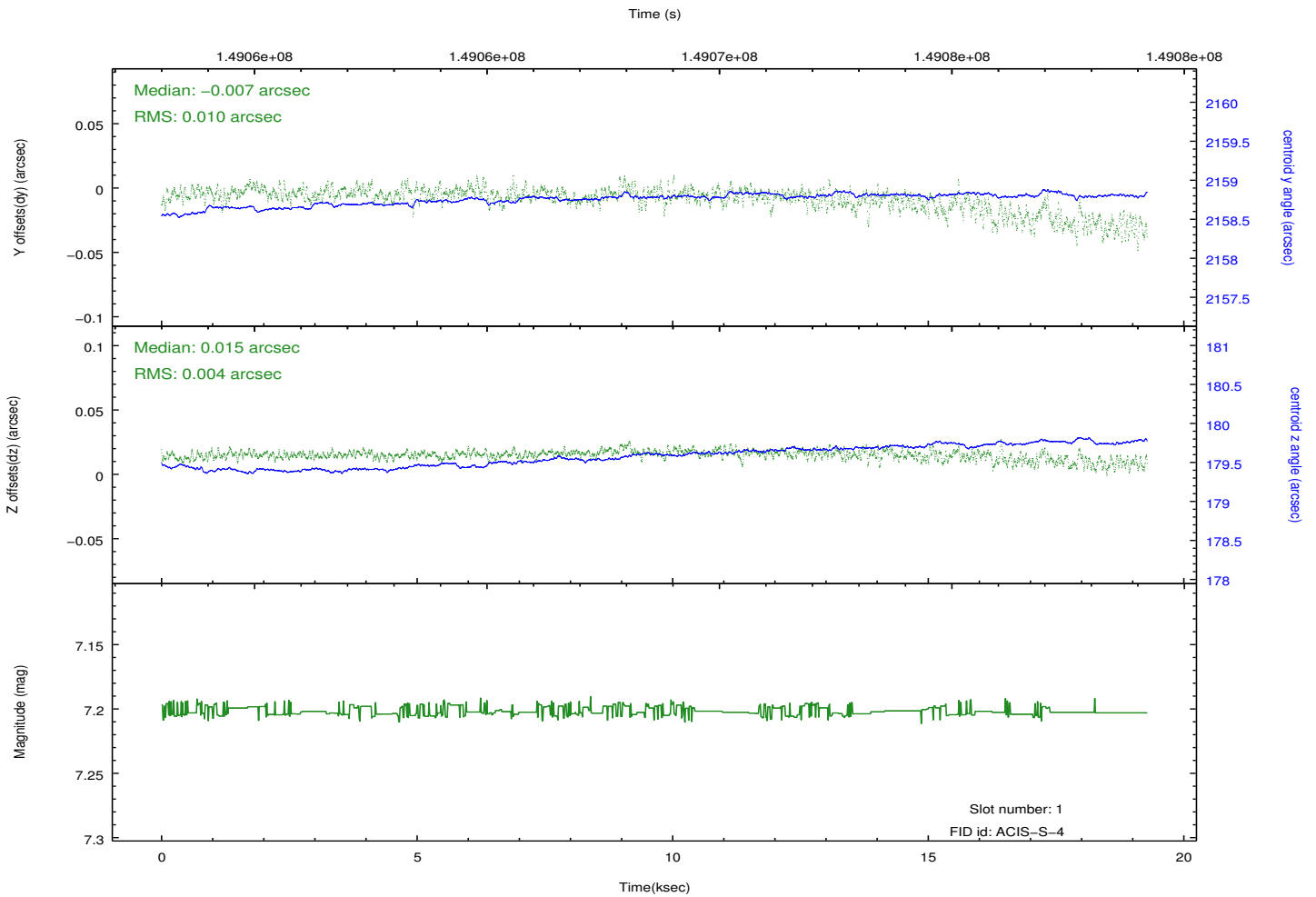
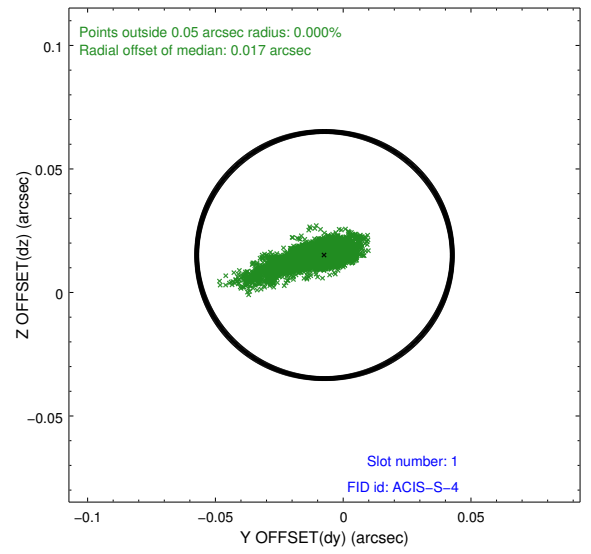
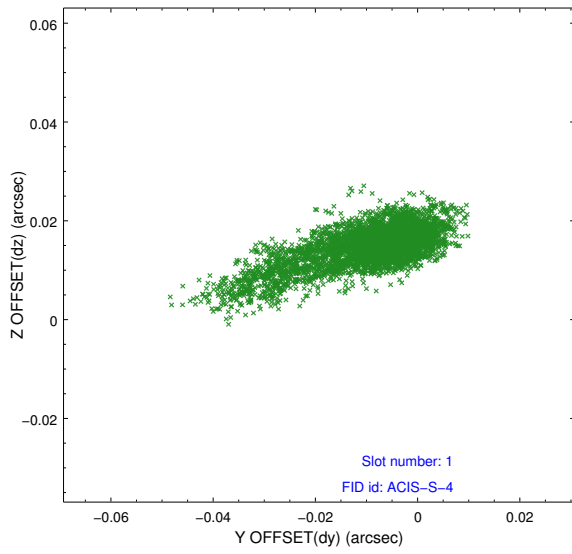


2.5 FID Slots

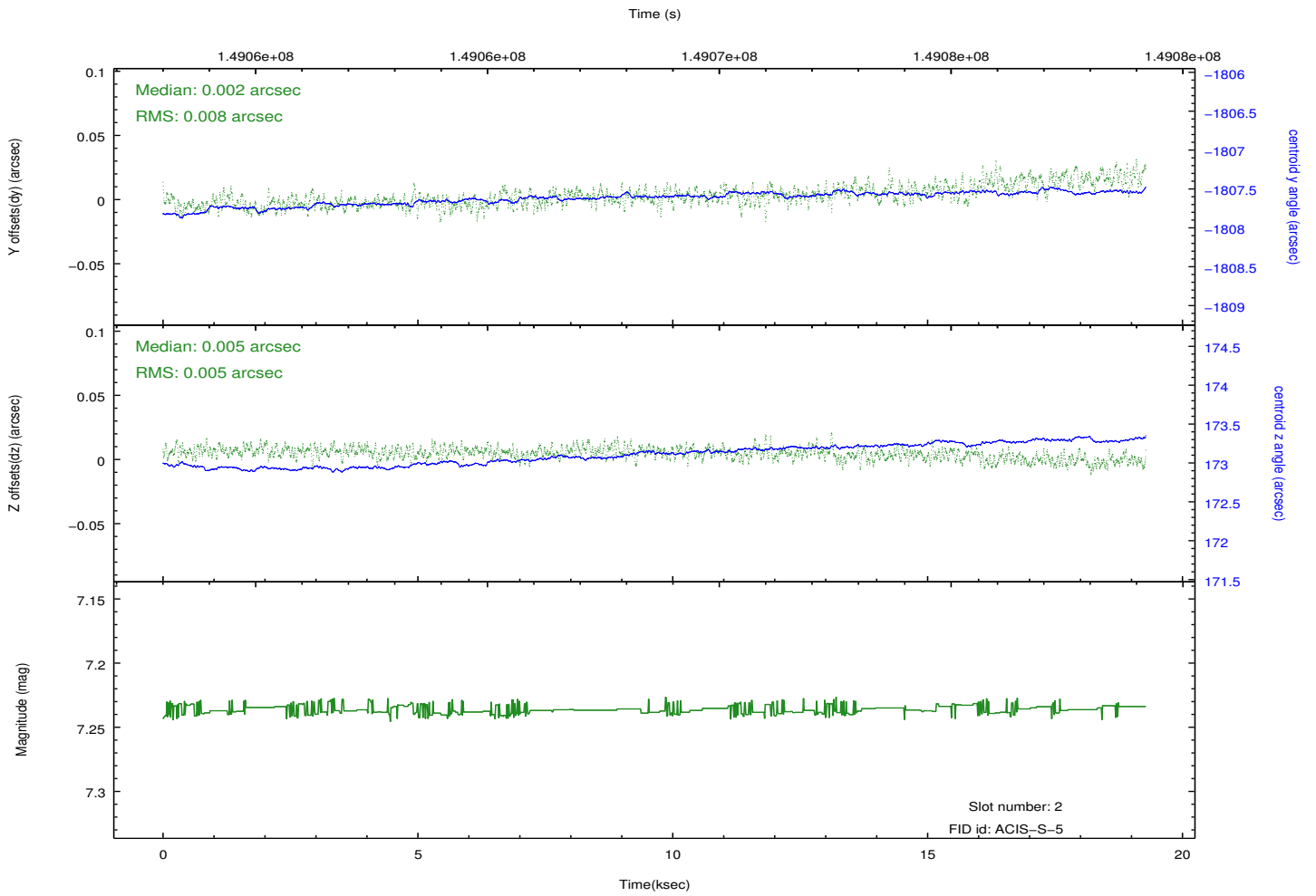
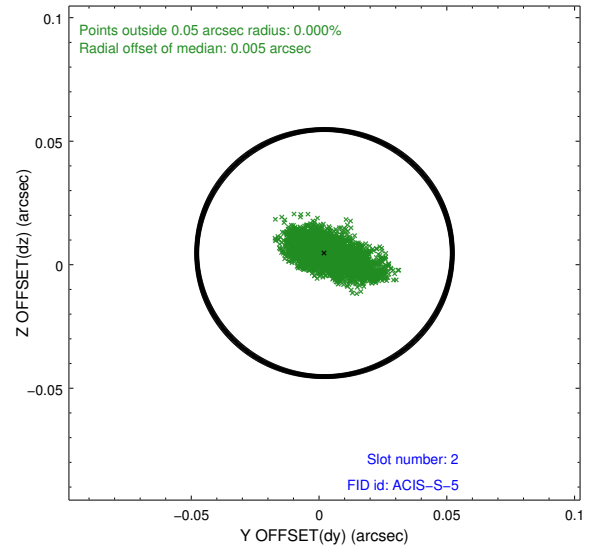
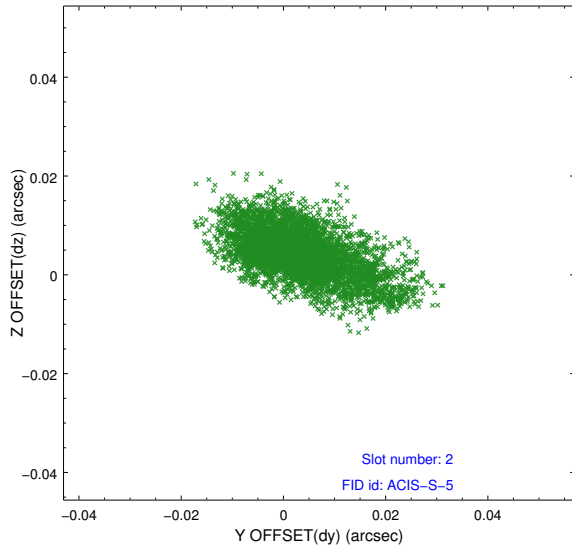
2.5.1 Slot 0



2.5.2 Slot 1



2.5.3 Slot 2



A Summary

A.1 Status

V&V Scientist	Beth Sundheim
V&V Date (YYYY-MM-DD)	2012.10.24
V&V Edition	1
V&V Disposition and Status	OK
V&V Charge Time	18.953

A.2 Comments