

V&V Reference Report

L2 ASCDS Version : 8.1.2

Observation 346 - L2 Version 4
Chandra X-Ray Center

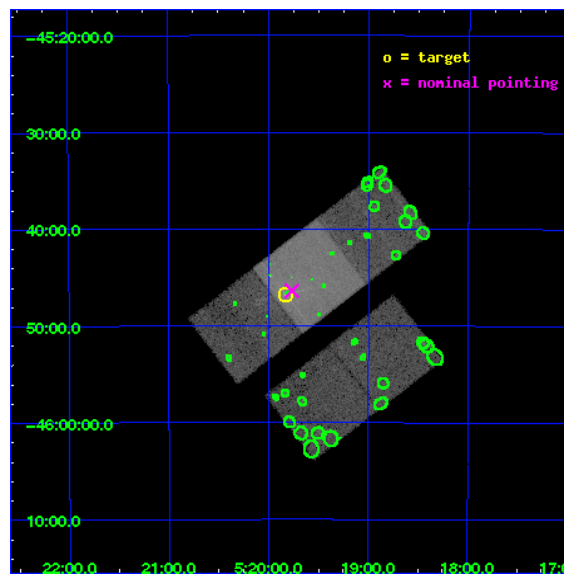
L2 Processing Date : Dec 4 2009

Contents

1	Front	2
2	OBI	3
2.1	OBI	3
2.1.1	Images	3
2.1.2	Bias	3
2.1.3	Parameters	4
2.1.4	Events	4
2.2	Compared Parameters	5
2.3	Aspect	6
2.4	Star Slots	9
2.4.1	Slot 3	9
2.4.2	Slot 4	10
2.4.3	Slot 5	11
2.4.4	Slot 6	12
2.4.5	Slot 7	13
2.5	FID Slots	14
2.5.1	Slot 0	14
2.5.2	Slot 1	15
2.5.3	Slot 2	16
3	Point Sources	17
A	Summary	18
A.1	Status	18
A.2	Comments	18

1 Front

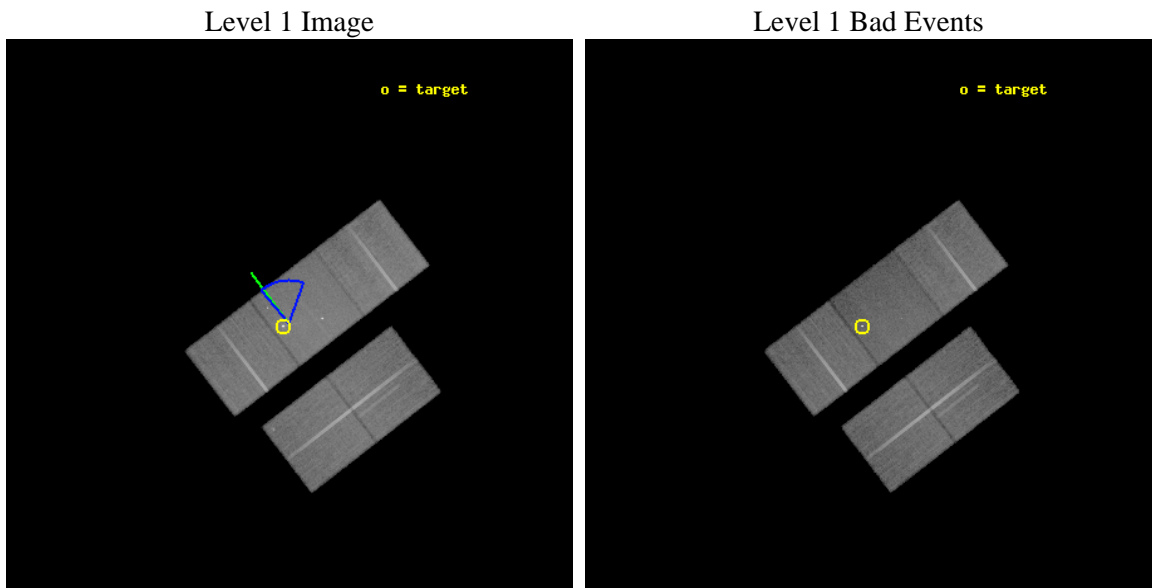
seq_num	700018	Sequence number
obs_id	346	Observation id
title	STUDIES OF RADIO JETS AND THE NARROW LINE REGIONS	Proposal title
observer	Professor Andrew Wilson	Principal investigator
object	PICTOR A	Source name
dtcycle	0	
cycle	P	events from which exps? Prim/Second/Both
ra_targ	79.957083	Observer's specified target RA
dec_targ	-45.779167	Observer's specified target Dec
ra_nom	79.94164094088	Nominal RA
dec_nom	-45.773197130279	Nominal Dec
roll_nom	322.39318039499	Nominal Roll
revision	4	Processing version of data
ontime	26165.626184508	Sum of GTIs [s]
livetime	25834.301270711	Livetime [s]
ontime2	26165.585144505	Sum of GTIs [s]
ontime3	26165.503064506	Sum of GTIs [s]
ontime6	26165.544104509	Sum of GTIs [s]
ontime7	26165.626184508	Sum of GTIs [s]
ontime8	26165.46202451	Sum of GTIs [s]
l2events	184447	Number of level 2 events



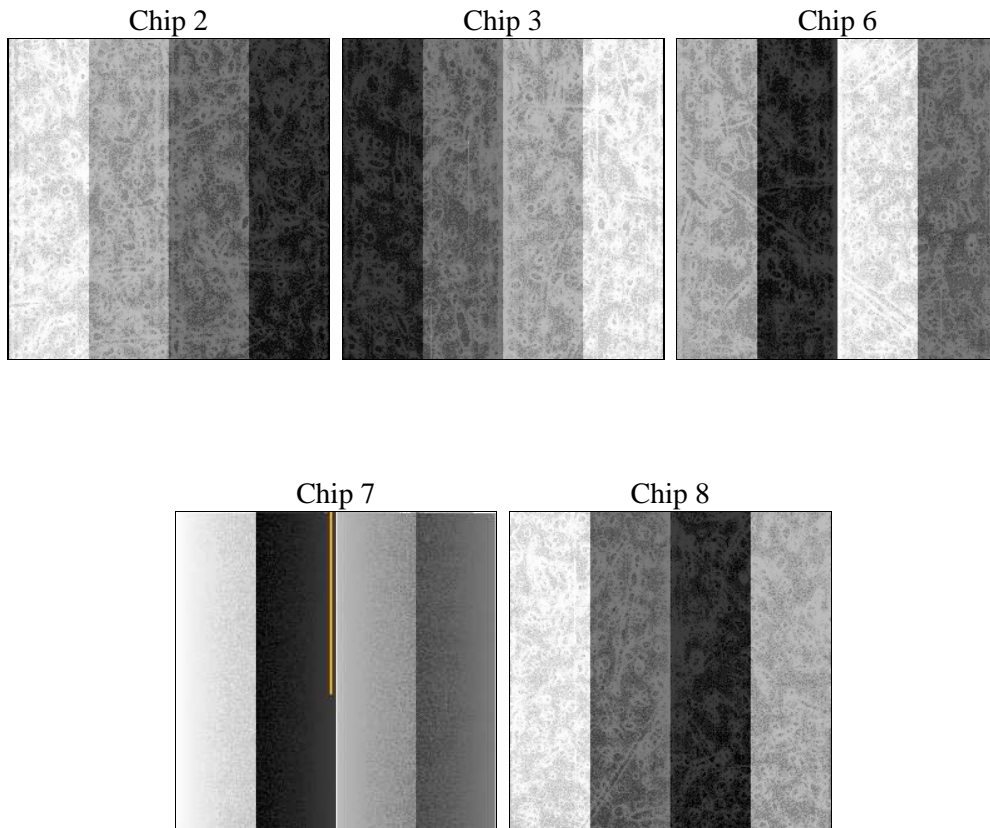
2 OBI

2.1 OBI

2.1.1 Images



2.1.2 Bias



2.1.3 Parameters

obi_num	0	Obi number	sched_exp_time	27000.000000	Scheduled observation exposure time
ascdsver	8.1.2	ASCDS version number	ontime	26165.626184508	Sum of GTIs [s]
caldbver	4.1.4	 	ontime2	26165.585144505	Sum of GTIs [s]
date	2009-12-05T03:38:55	Date and time of file creation	ontime3	26165.503064506	Sum of GTIs [s]
revision	4	Processing version of data	ontime6	26165.544104509	Sum of GTIs [s]
			ontime7	26165.626184508	Sum of GTIs [s]
			ontime8	26165.46202451	Sum of GTIs [s]
			l1events	1190241	Number of level 1 events

2.1.4 Events

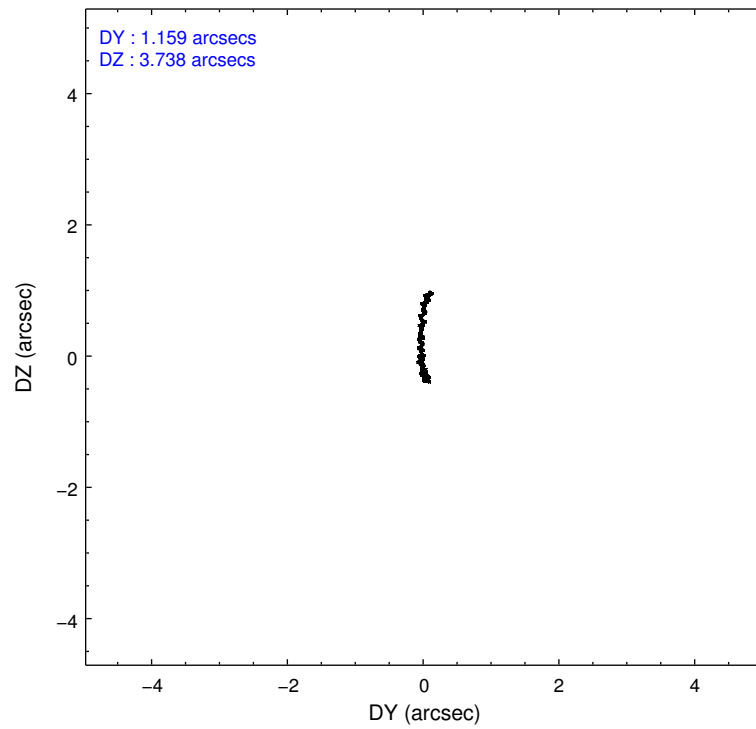
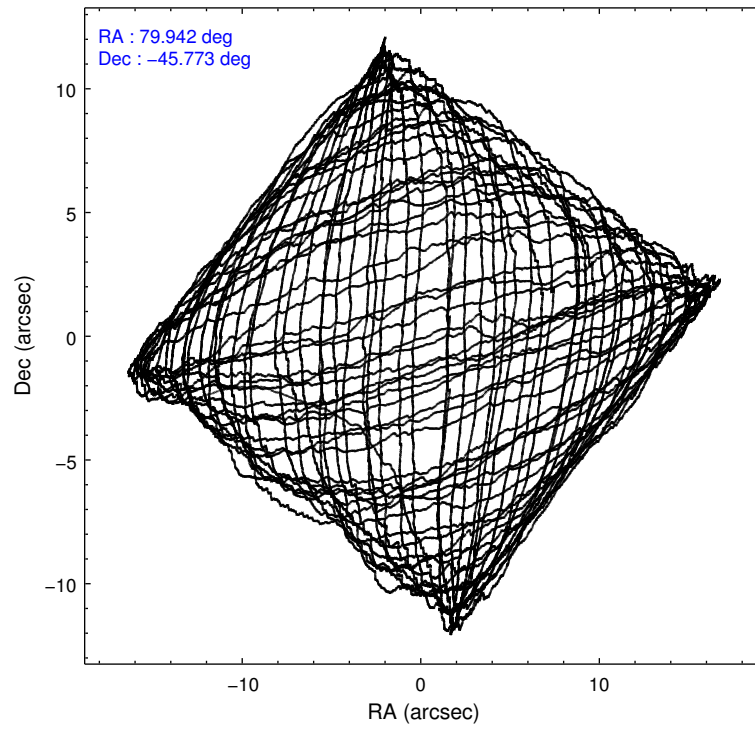
	ccd 2	ccd 3	ccd 6	ccd 7	ccd 8
level 1 events	223630	219939	227820	259655	259197
rejected events	203274	199073	205263	155451	215754
rejected %	90%	90%	90%	59%	83%

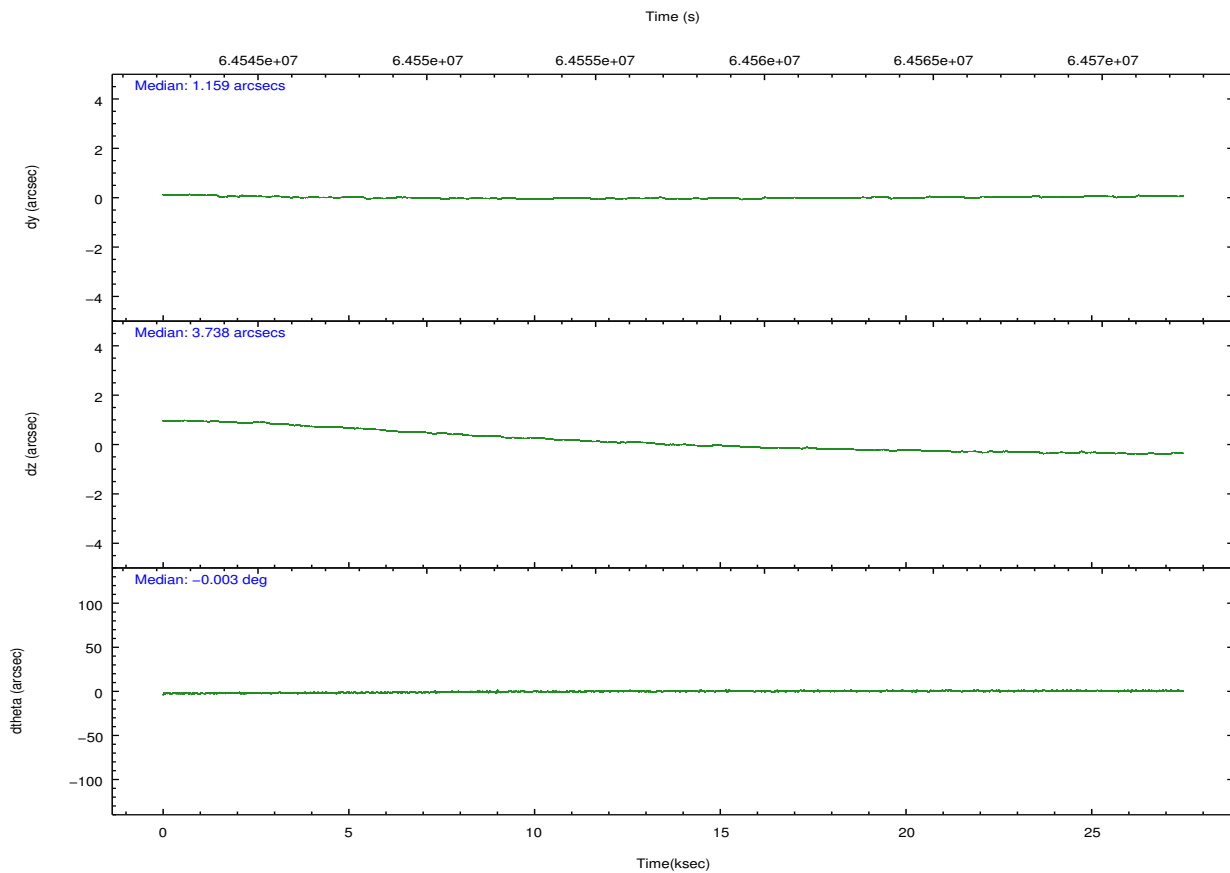
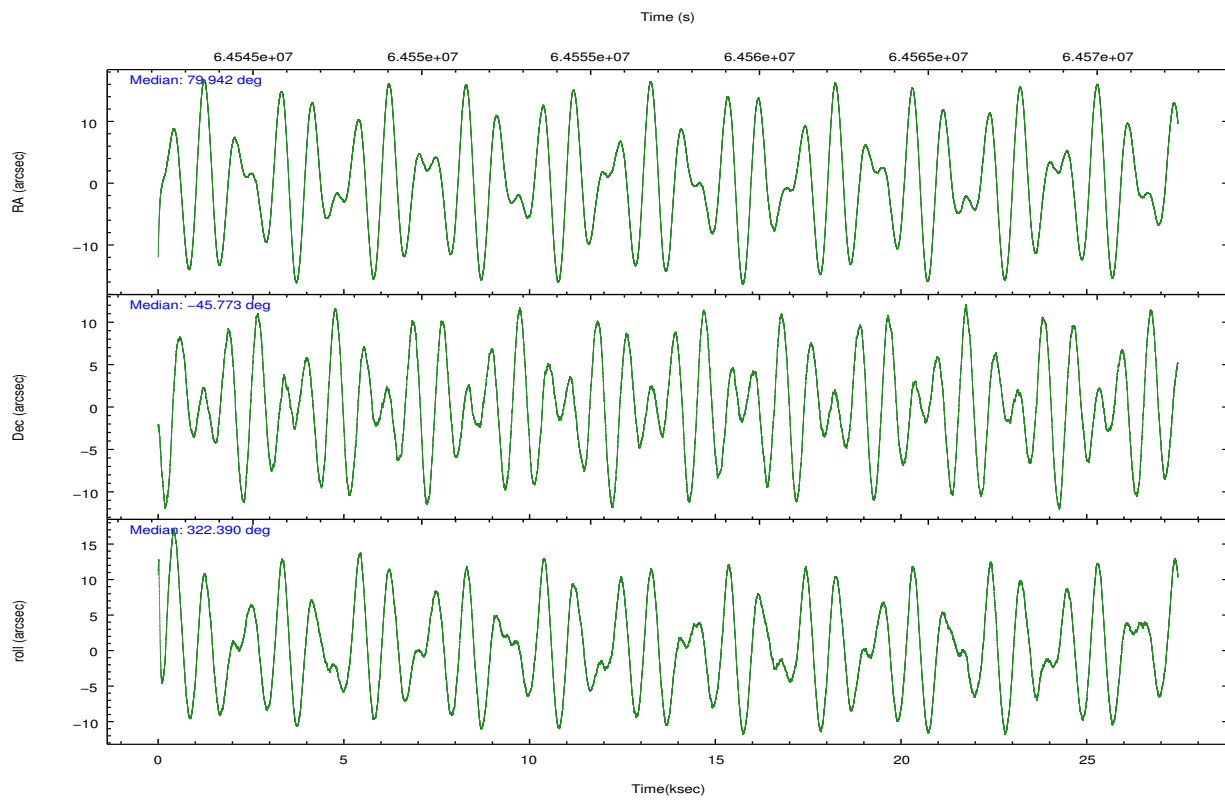
	ccd 2	ccd 3	ccd 6	ccd 7	ccd 8
grade 0 events	4742	4447	5016	9001	9881
	2%	2%	2%	3%	3%
grade 1 events	42	37	36	258	81
	0%	0%	0%	0%	0%
grade 2 events	7935	8365	8580	22524	14011
	3%	3%	3%	8%	5%
grade 3 events	1358	1380	1445	6691	3487
	0%	0%	0%	2%	1%
grade 4 events	1362	1275	1311	6047	3266
	0%	0%	0%	2%	1%
grade 5 events	3899	4224	4573	14553	6321
	1%	1%	2%	5%	2%
grade 6 events	4962	5403	6212	59965	12810
	2%	2%	2%	23%	4%
grade 7 events	199330	194808	200647	140616	209340
	89%	88%	88%	54%	80%

2.2 Compared Parameters

Parameter	Planned	Actual	Parameter	Planned	Actual
Instrument	ACIS	ACIS	Obspar format version number	6	6
Detector	ACIS-23678	ACIS-23678	Obspar file type	PREDICTED	ACTUAL
Grating	NONE	NONE	Obspar update status	NONE	UPDATED
Data mode	FAINT	FAINT	Number of optional ACIS chips dropped	0	0
Observation mode	POINTING	POINTING	On-chip summing requested	N	N
Pointing RA	79.902528	79.94164094087975	Subarray requested	NONE	NONE
Pointing Dec	-45.769504	-45.77319713027932	Alternating exposures requested	N	N
Pointing Roll	322.208513	322.3931803949903	Primary exposure time	0.000000	3.2
Roll angle	349.000000	349.000000			
Roll tolerance	30.000000	30.000000			
Roll constraint allows 180D rotation	N	N			
Window start time	62985664.184000	62985664.184000			
Window stop time	70761664.184000	70761664.184000			
SIM focus pos (mm)	-0.684267	-0.6828225247311905			
SIM defocus (mm)	0	0.001444936568705701			
SIM translation stage pos (mm)	-190.132523	-190.1425803651734			
SIM translation stage offset (mm)	0	0.01005778216563158			
Observation start time	64544019.184000	64542882.701278			
Observation start date	2000-01-18T00:52:35	2000-01-18T00:34:42			
Observation end time	64571019.184000	64571484.302318			
Observation end date	2000-01-18T08:22:35	2000-01-18T08:31:24			
Read mode	TIMED	TIMED			

2.3 Aspect



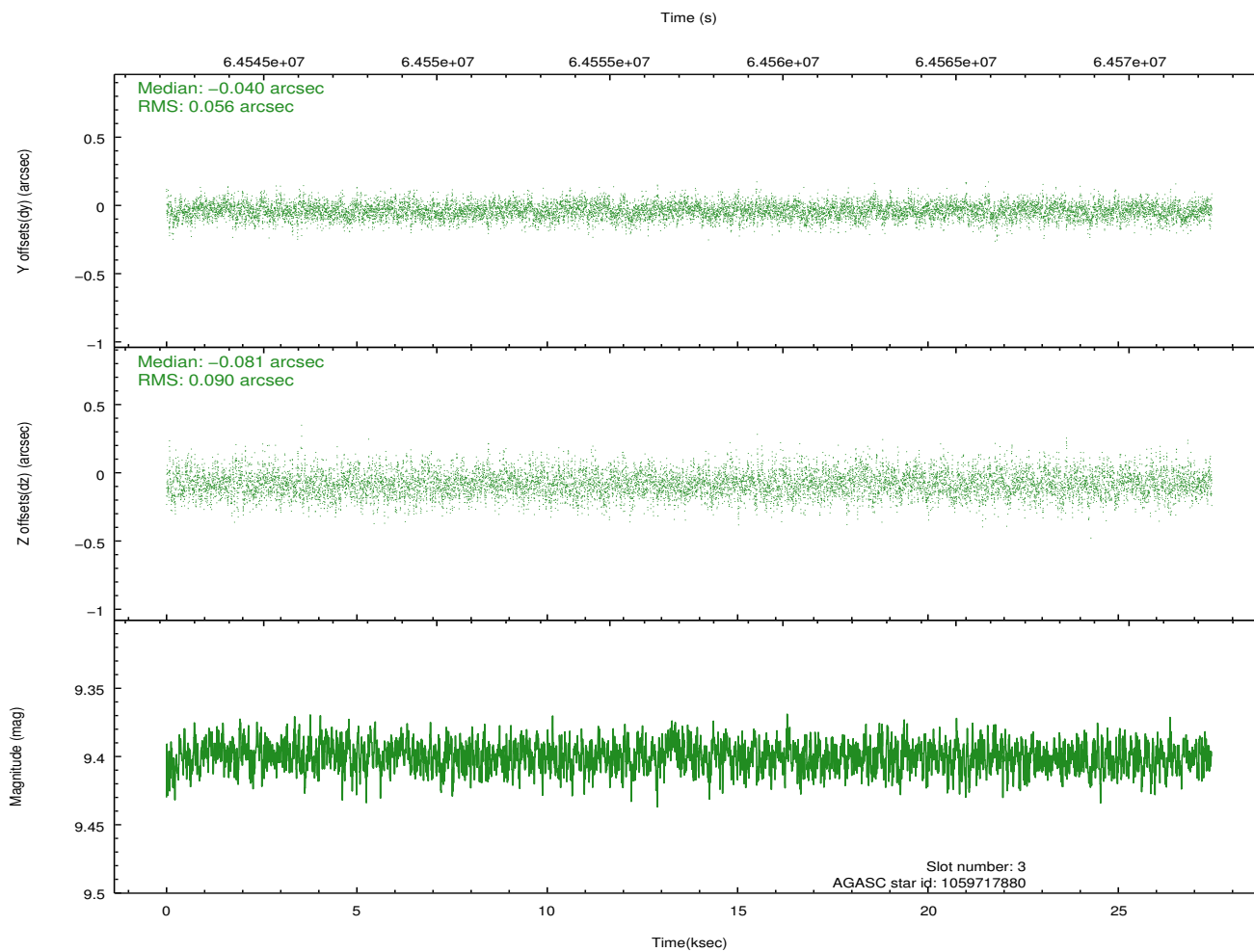
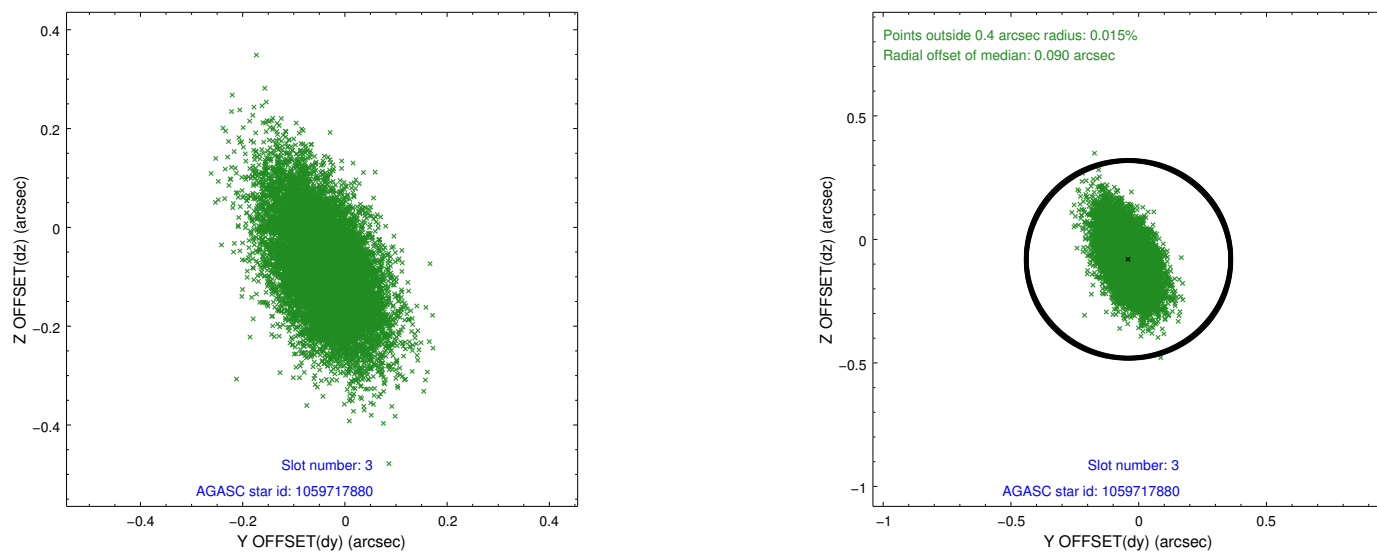


Slot Statistics

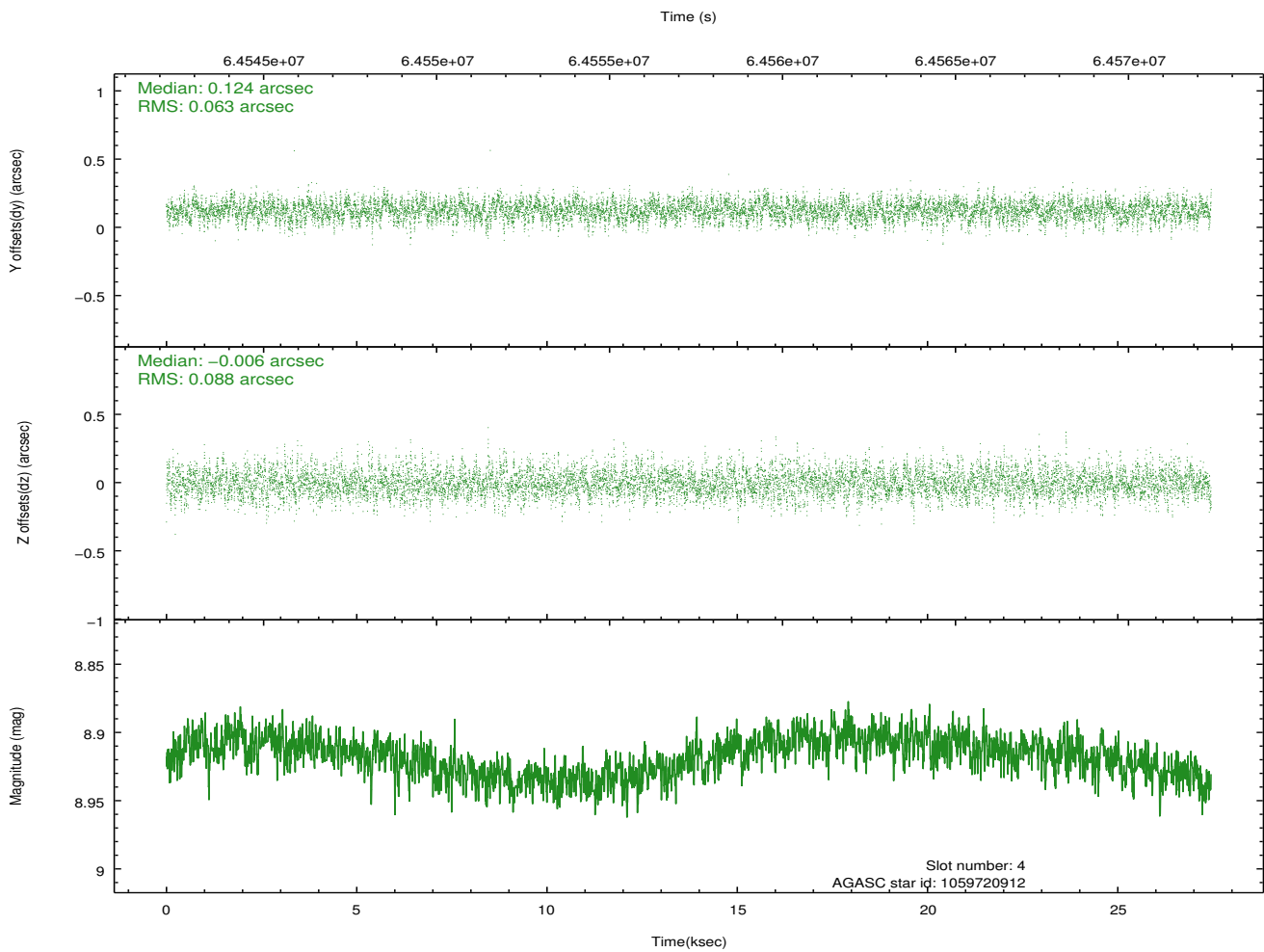
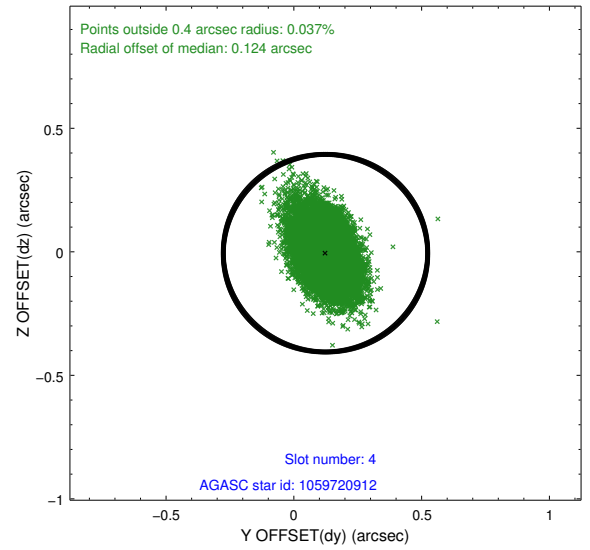
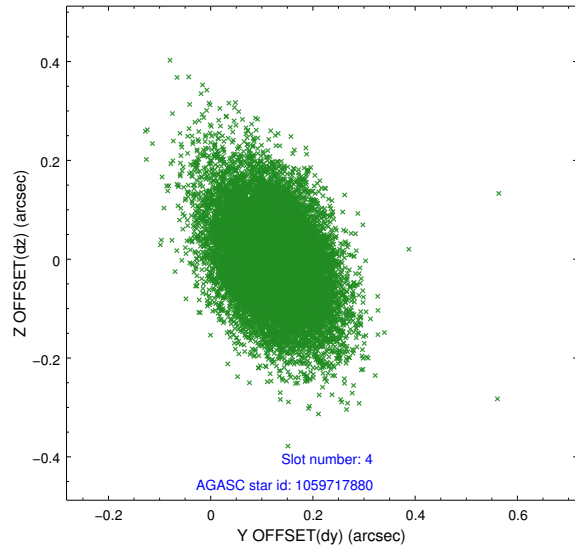
slot	status	id	mag	n_pts	med_dy	med_dz	dr1	dr2	ra	dec	mean_y	mean_z
0	FID	ACIS-S-2	7.11	6694	-0.010	-0.011	0.011	0.020	0.000000	0.000000	-753.81	-1724.90
1	FID	ACIS-S-4	7.21	6695	0.005	-0.007	0.007	0.012	0.000000	0.000000	2159.48	183.43
2	FID	ACIS-S-6	7.36	6696	-0.022	0.026	0.010	0.016	0.000000	0.000000	408.34	821.00
3	GUIDE	1059717880	9.40	13380	-0.040	-0.081	0.107	0.195	80.170541	-45.252177	-604.01	1887.01
4	GUIDE	1059720912	8.92	13385	0.124	-0.006	0.111	0.192	80.344072	-46.279067	1994.21	-778.58
5	GUIDE	1058808528	10.28	13309	-0.135	-0.046	0.145	0.278	78.729319	-45.960353	-1885.87	-2359.33
6	GUIDE	1059720952	9.30	13382	0.084	0.040	0.120	0.212	80.539931	-46.279907	2383.01	-485.22
7	GUIDE	995373064	10.63	13296	-0.034	0.091	0.188	0.320	79.675697	-44.982677	-2191.85	1883.86

2.4 Star Slots

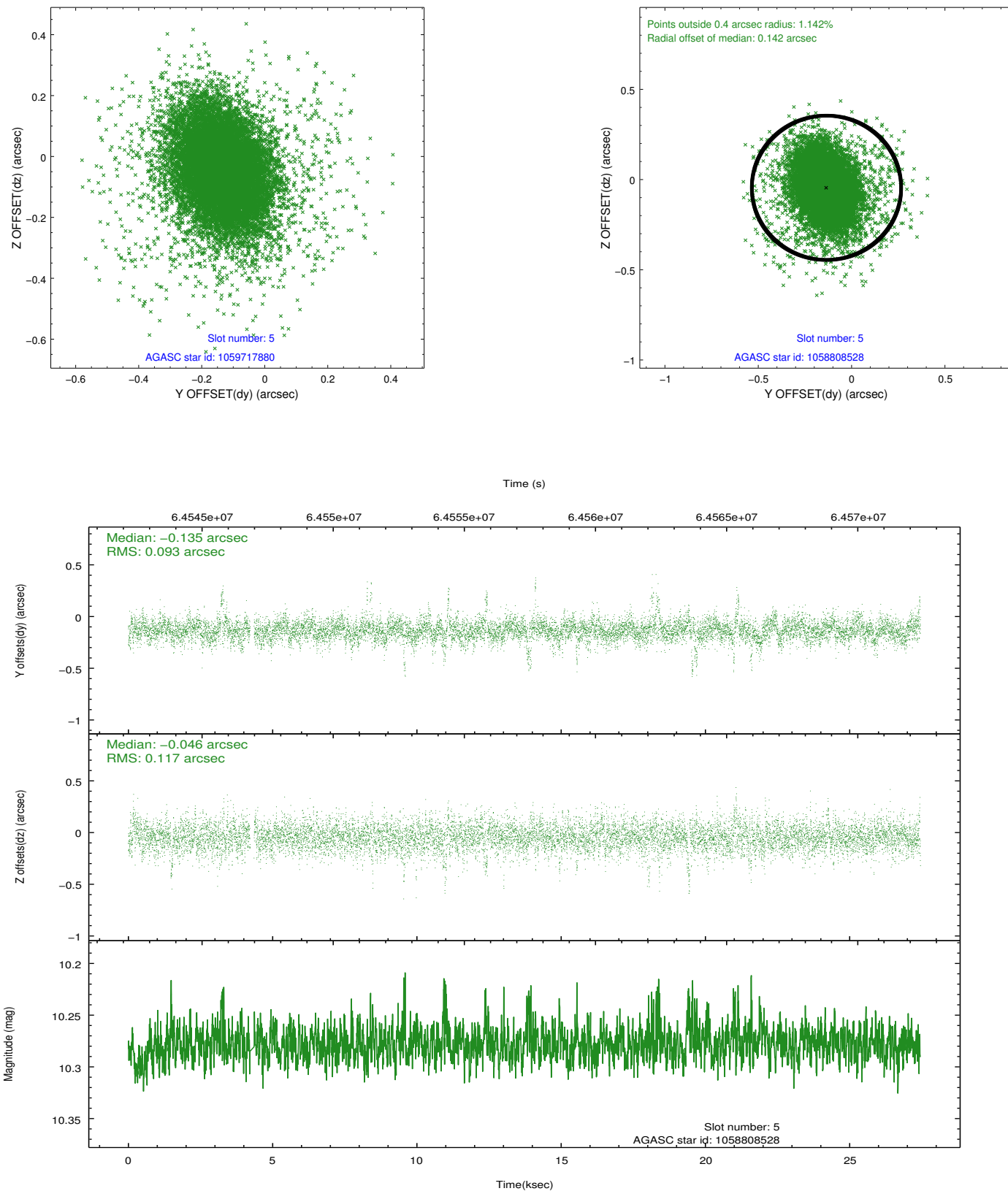
2.4.1 Slot 3



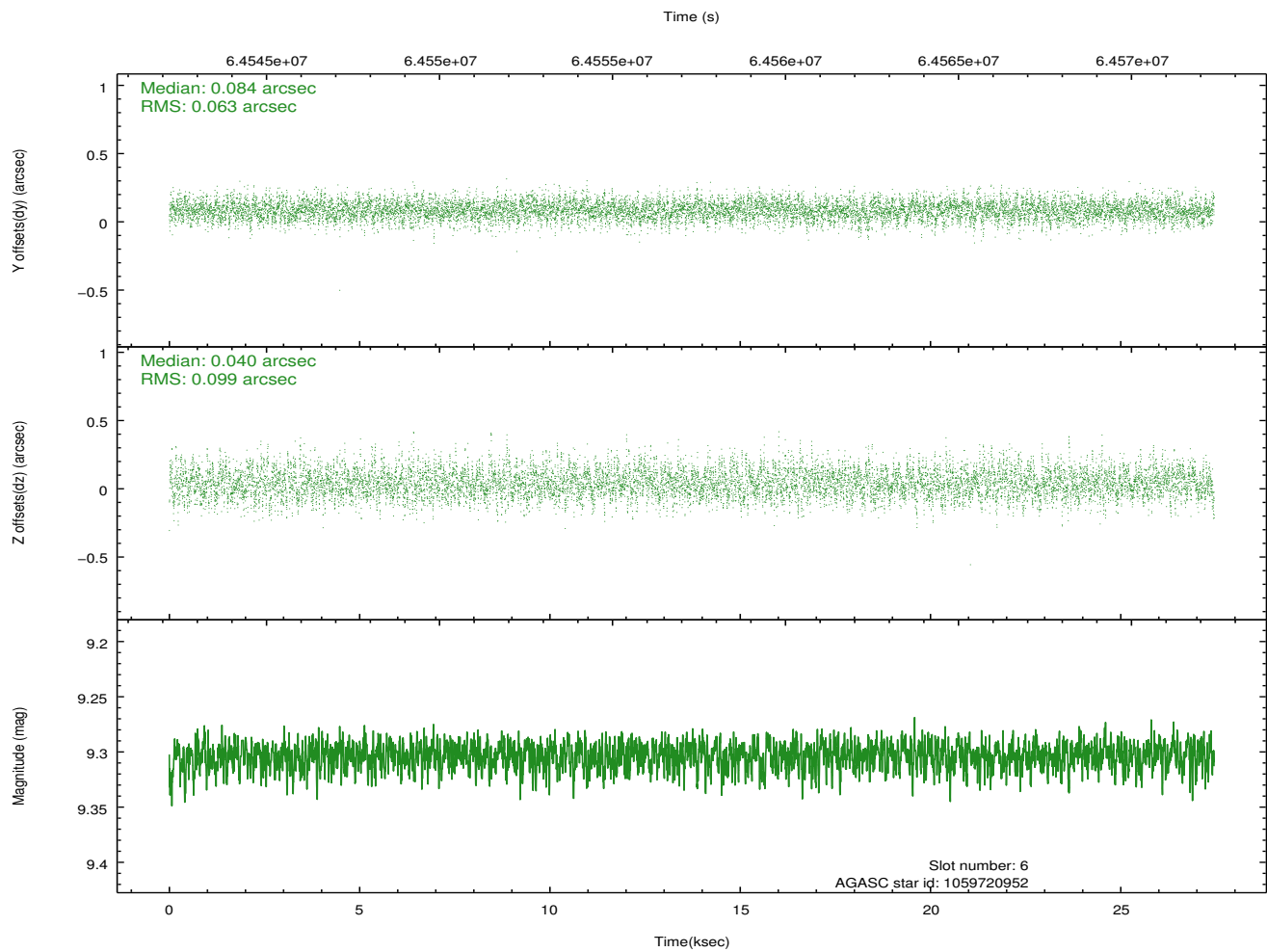
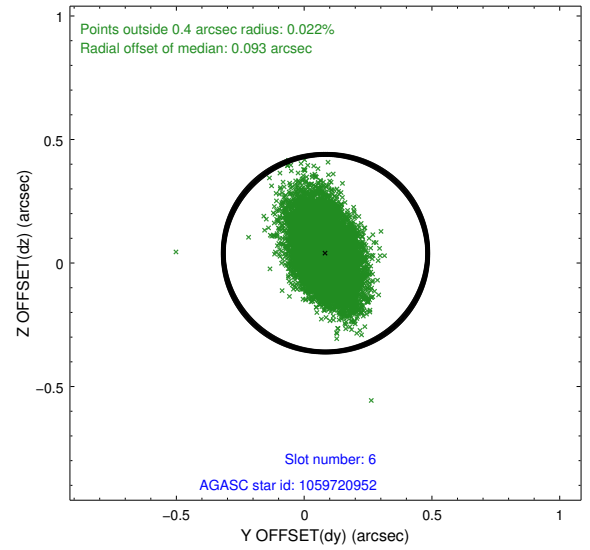
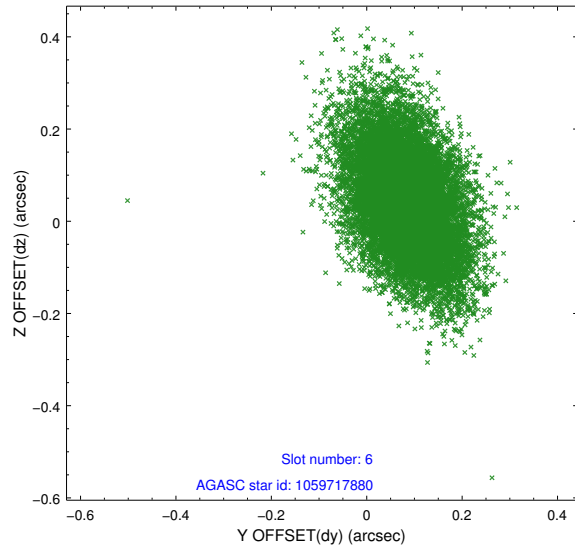
2.4.2 Slot 4



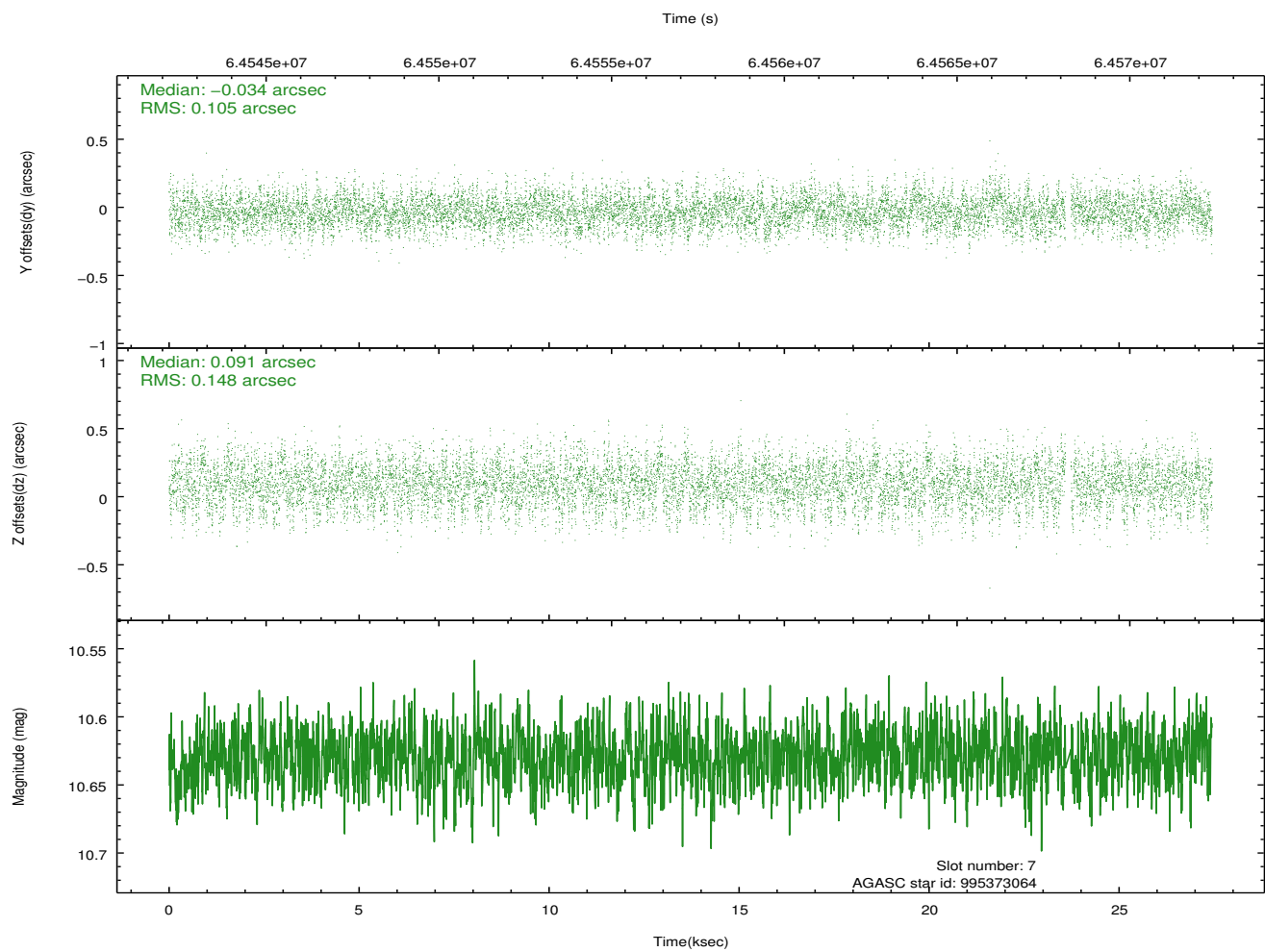
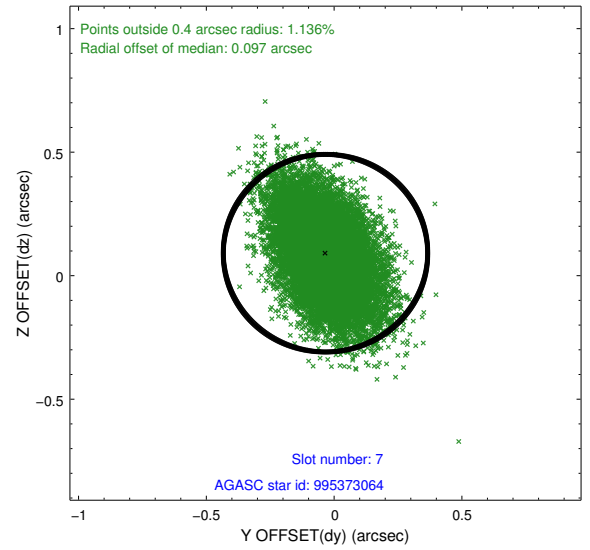
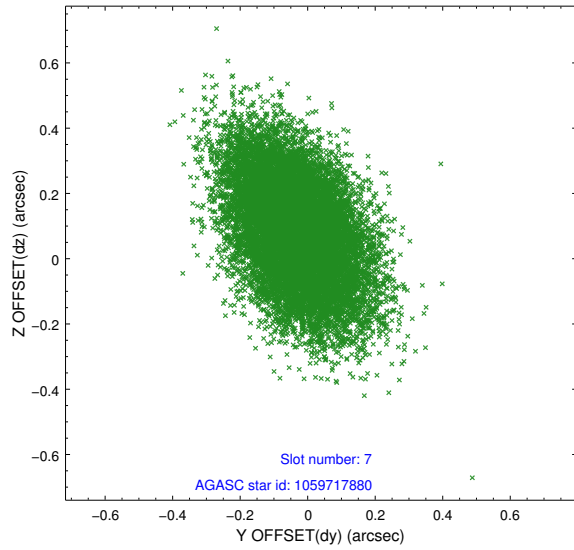
2.4.3 Slot 5



2.4.4 Slot 6

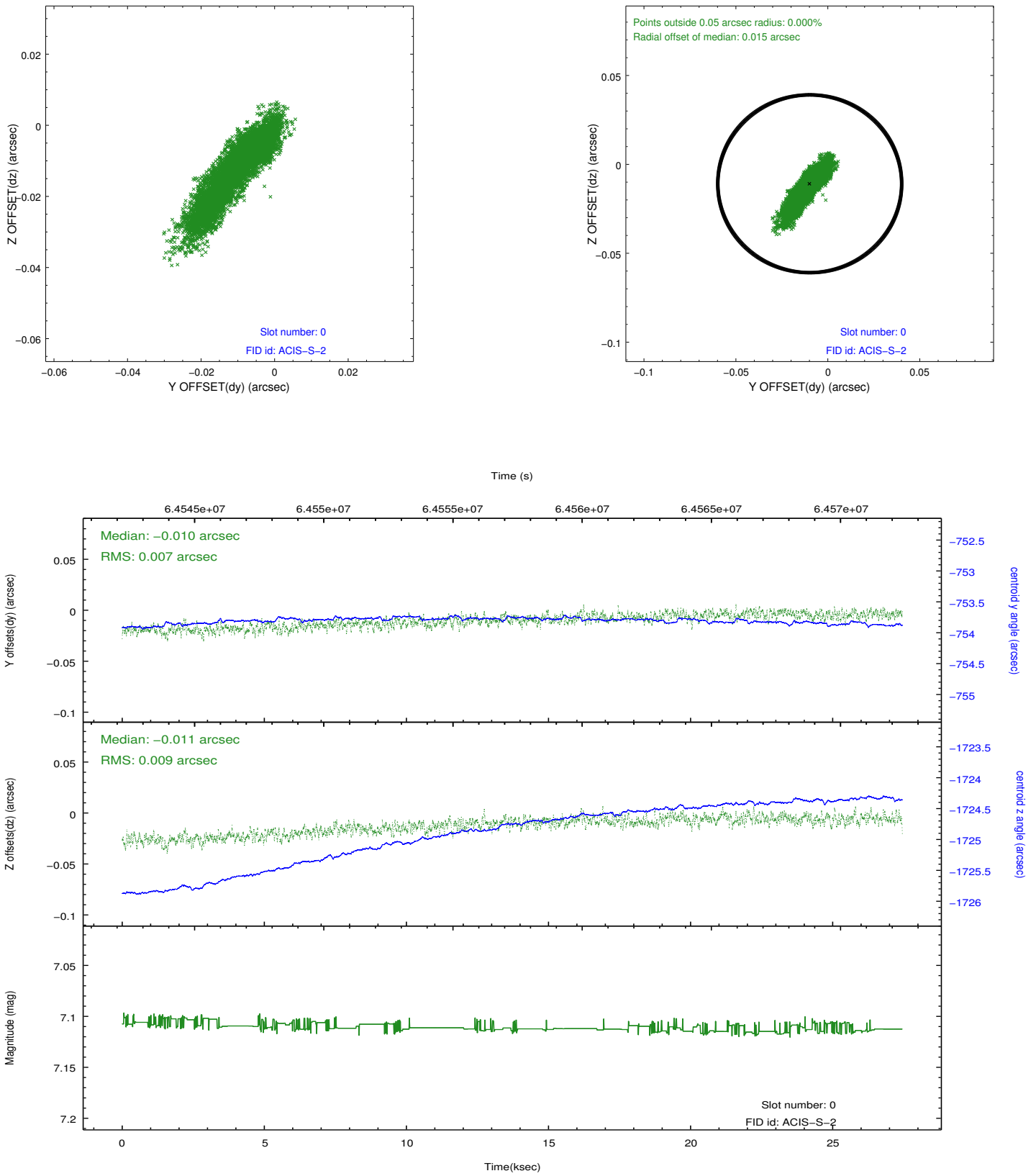


2.4.5 Slot 7

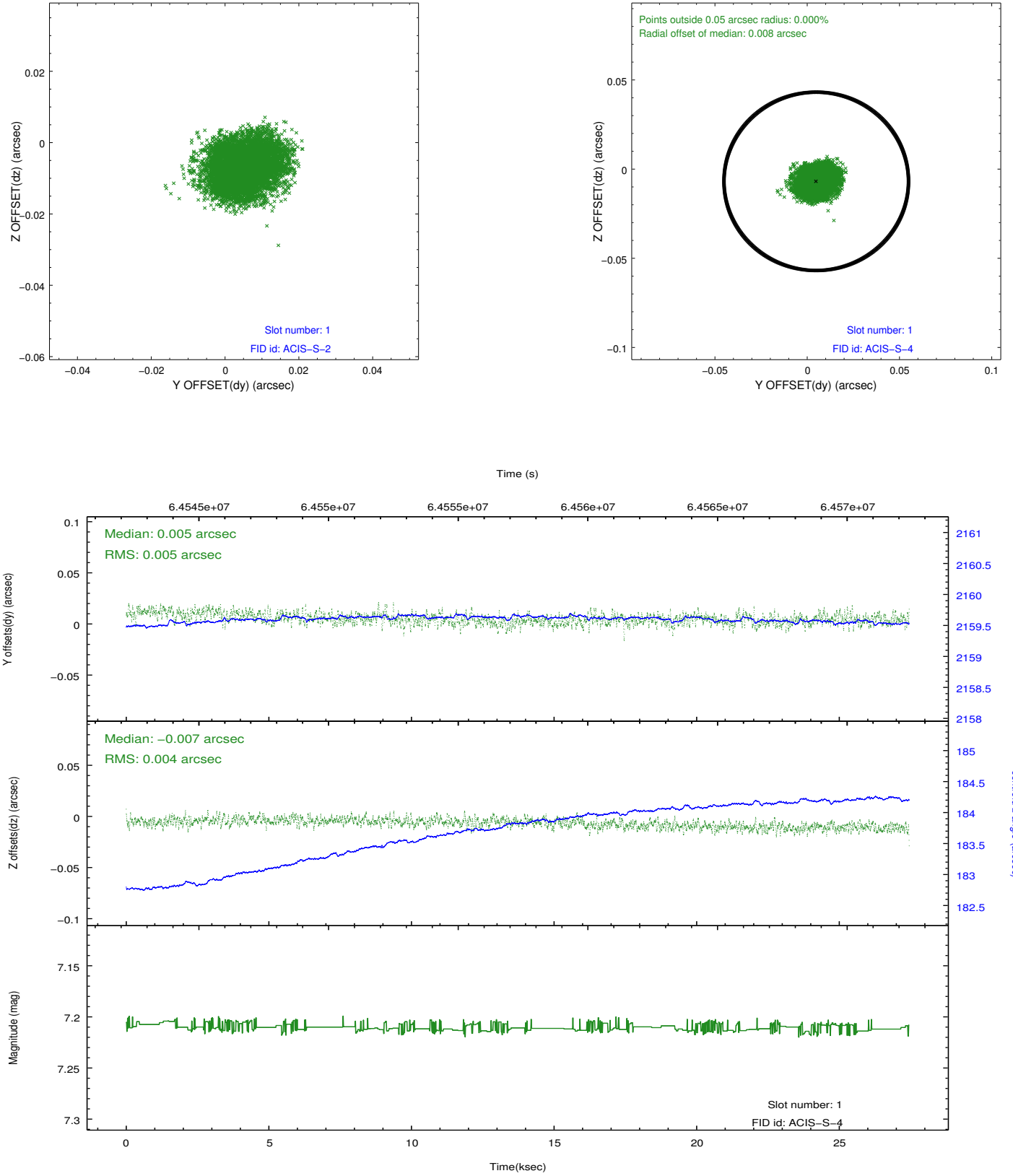


2.5 FID Slots

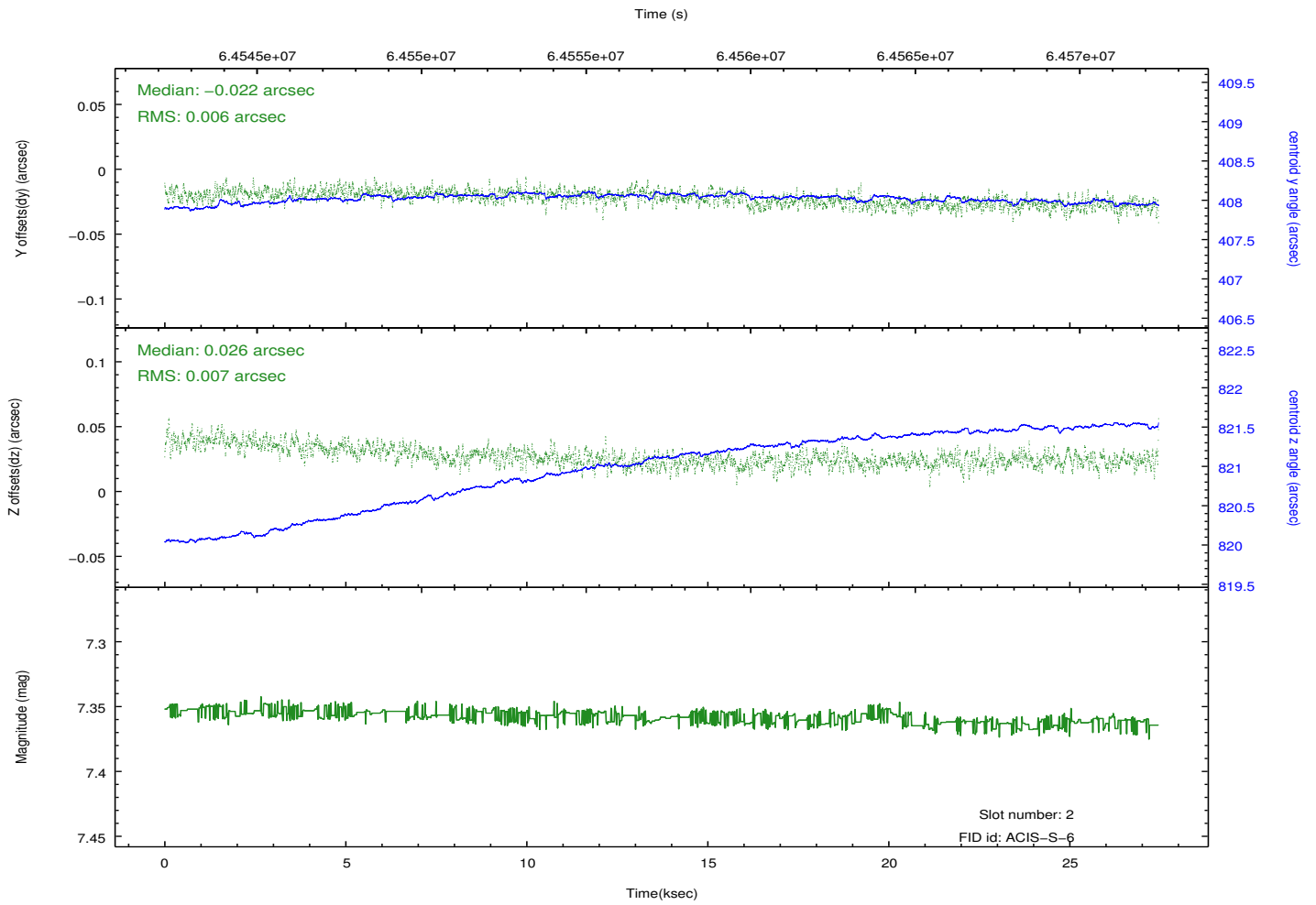
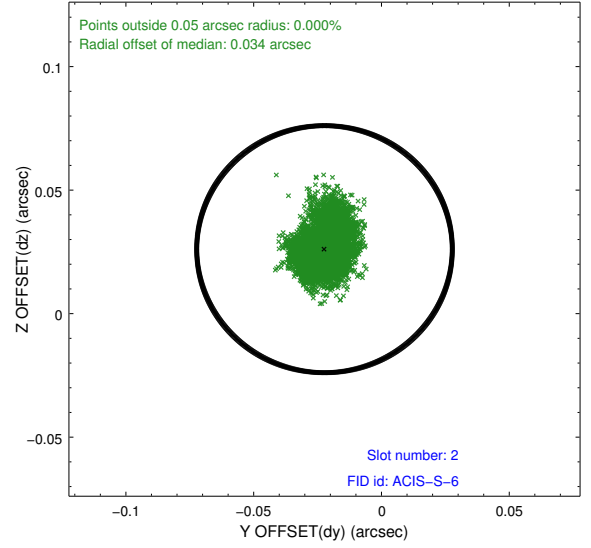
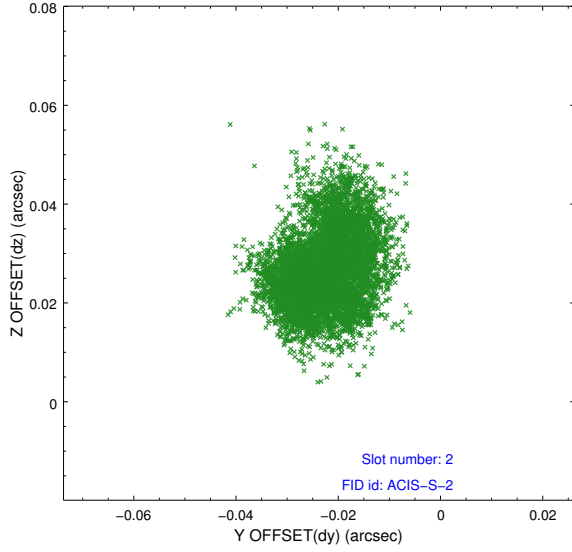
2.5.1 Slot 0



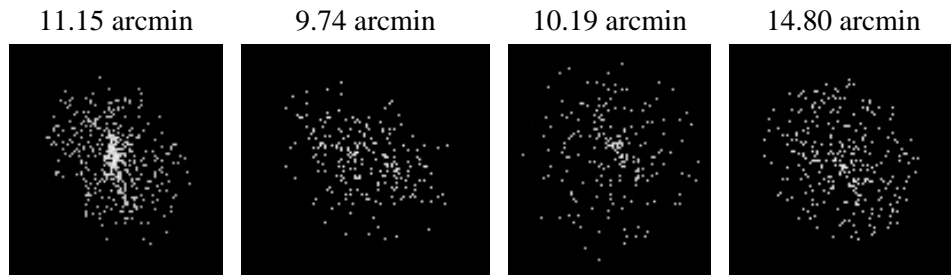
2.5.2 Slot 1



2.5.3 Slot 2



3 Point Sources



A Summary

A.1 Status

V&V Scientist	Joy Nichols
V&V Date (YYYY-MM-DD)	2010.01.22
V&V Edition	1
V&V Disposition and Status	OK
V&V Charge Time	28.595

A.2 Comments

Charge time for this ObsId remains at original value of 28.595 ks, although with the current processing the charge time would have been 26.166 ksec.

====

Focal plane temperature is approximately -110 C degrees during this observation. ACIS has not been calibrated at this temperature, because the focal plan temperature of -119.7 C degrees became the standard shortly after the start of the mission. Both front and back illuminated chips are affected.

The ACIS spectral response calibration is less accurate at these warmer temperatures than it is at -119.7 C. Users whose science objectives depend

on the most accurate spectral response (ie: fitting line-rich spectra) may

notice an effect. Users whose science objectives do not depend on the most accurate spectral response should not notice an effect.

This reprocessing

of the data applies no CTI correction because none is available for this temperature.

==

Roll preference met.

Window preference met.