

# V&V Reference Report

## L2 ASCDS Version : 8.4.5

Observation 3496 - L2 Version 3  
Chandra X-Ray Center

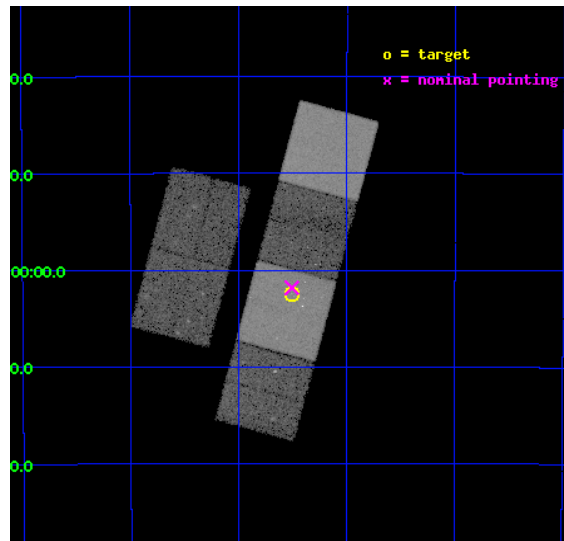
L2 Processing Date : Oct 9 2012

## Contents

<b>1</b>	<b>Front</b>	<b>2</b>
<b>2</b>	<b>OBI</b>	<b>3</b>
2.1	OBI . . . . .	3
2.1.1	Images . . . . .	3
2.1.2	Bias . . . . .	3
2.1.3	Parameters . . . . .	4
2.1.4	Events . . . . .	4
2.2	Compared Parameters . . . . .	5
2.3	Aspect . . . . .	6
2.4	Star Slots . . . . .	9
2.4.1	Slot 3 . . . . .	9
2.4.2	Slot 4 . . . . .	10
2.4.3	Slot 5 . . . . .	11
2.4.4	Slot 6 . . . . .	12
2.4.5	Slot 7 . . . . .	13
2.5	FID Slots . . . . .	14
2.5.1	Slot 0 . . . . .	14
2.5.2	Slot 1 . . . . .	15
2.5.3	Slot 2 . . . . .	16
<b>A</b>	<b>Summary</b>	<b>17</b>
A.1	Status . . . . .	17
A.2	Comments . . . . .	17

# 1 Front

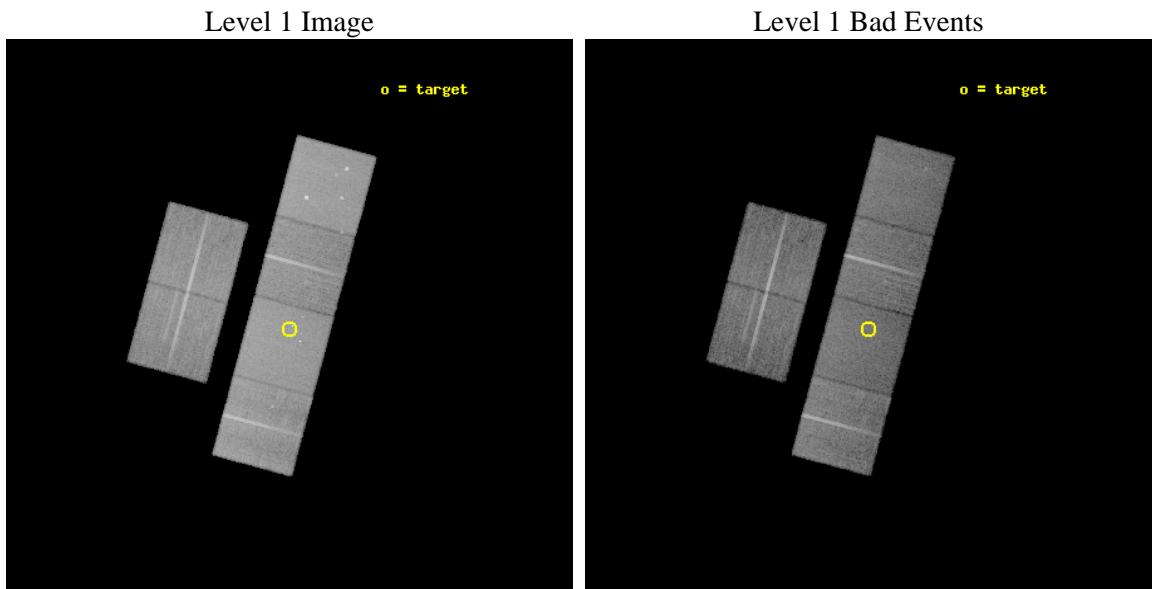
seq_num	500298	Sequence number
obs_id	3496	Observation id
title	SN2001IG: DETECTING A MASS LOSS PHASE?	Proposal title
observer	Dr. Eric Schlegel	Principal investigator
object	SN2001IG	Source name
dtcycle	0	&#160
cycle	P	events from which exps? Prim/Second/Both
ra_targ	344.377917	Observer's specified target RA [deg]
dec_targ	-41.040278	Observer's specified target Dec [deg]
ra_nom	344.3768192968	Nominal RA [deg]
dec_nom	-41.030636627922	Nominal Dec [deg]
roll_nom	105.03408727713	Nominal Roll [deg]
revision	3	Processing version of data
ontime	24188.79990989	Sum of GTIs [s]
livetime	23882.506760684	Livetime [s]
ontime2	24188.79990989	Sum of GTIs [s]
ontime3	24188.79990989	Sum of GTIs [s]
ontime5	24188.79990989	Sum of GTIs [s]
ontime6	24188.79990989	Sum of GTIs [s]
ontime7	24188.79990989	Sum of GTIs [s]
ontime8	24188.79990989	Sum of GTIs [s]
l2events	236648	Number of level 2 events



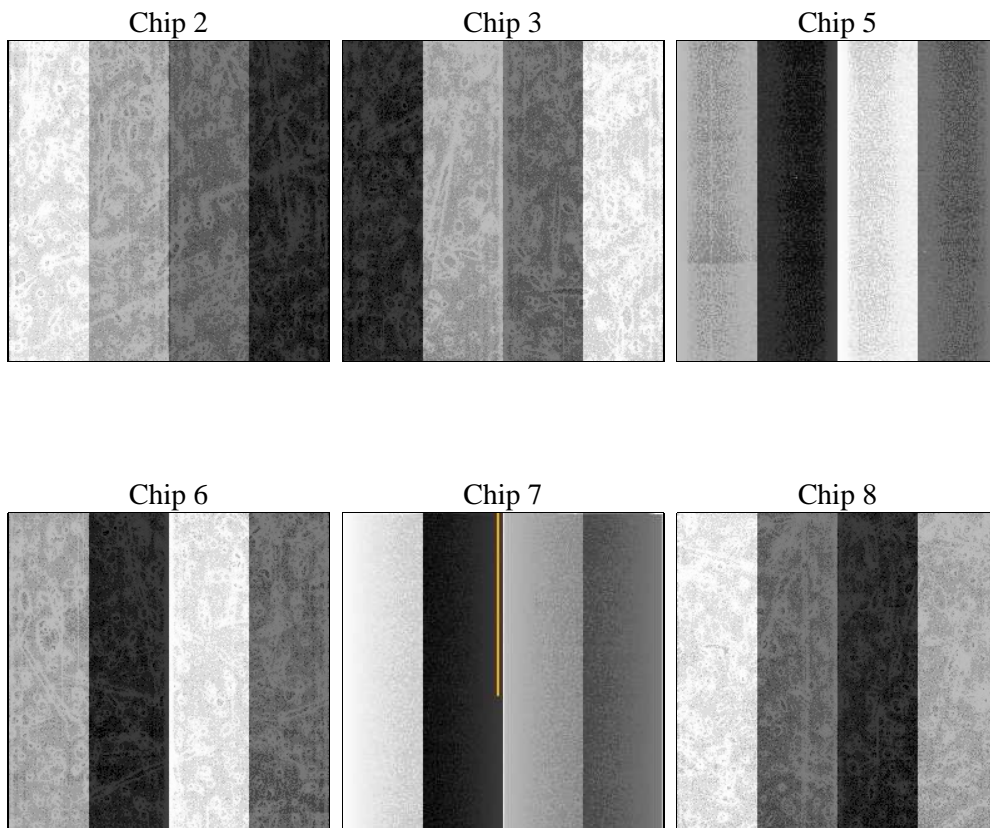
## 2 OBI

### 2.1 OBI

#### 2.1.1 Images



#### 2.1.2 Bias



### 2.1.3 Parameters

obi_num	0	Obi number	sched_exp_time	24000.000000	[s] Scheduled observation exposure time
ascdsver	8.4.5	Processing system revision	ontime	24188.79990989	Sum of GTIs [s]
caldbver	4.5.2	&#160	ontime2	24188.79990989	Sum of GTIs [s]
date	2012-10-09T04:27:33	Date and time of file creation	ontime3	24188.79990989	Sum of GTIs [s]
revision	3	Processing version of data	ontime5	24188.79990989	Sum of GTIs [s]
			ontime6	24188.79990989	Sum of GTIs [s]
			ontime7	24188.79990989	Sum of GTIs [s]
			ontime8	24188.79990989	Sum of GTIs [s]
			l1events	1051806	Number of level 1 events

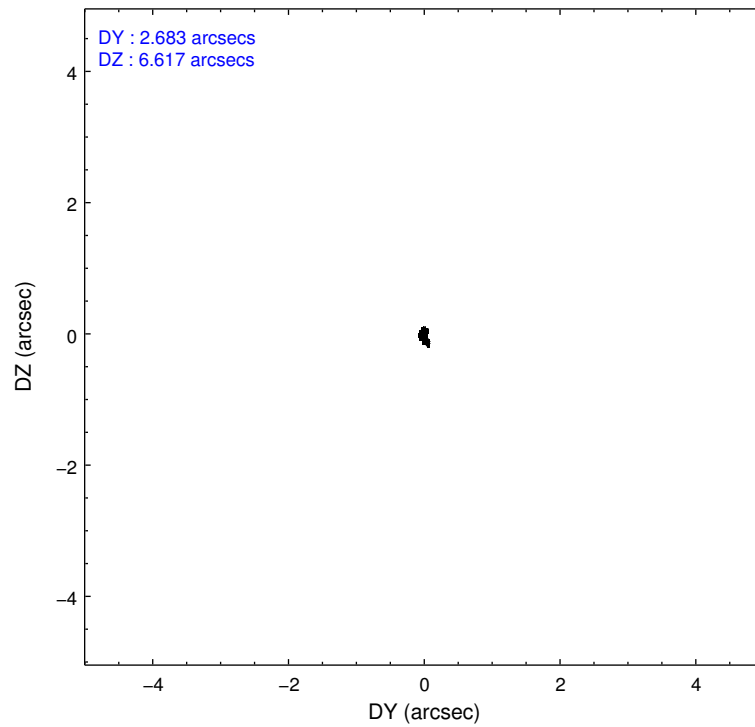
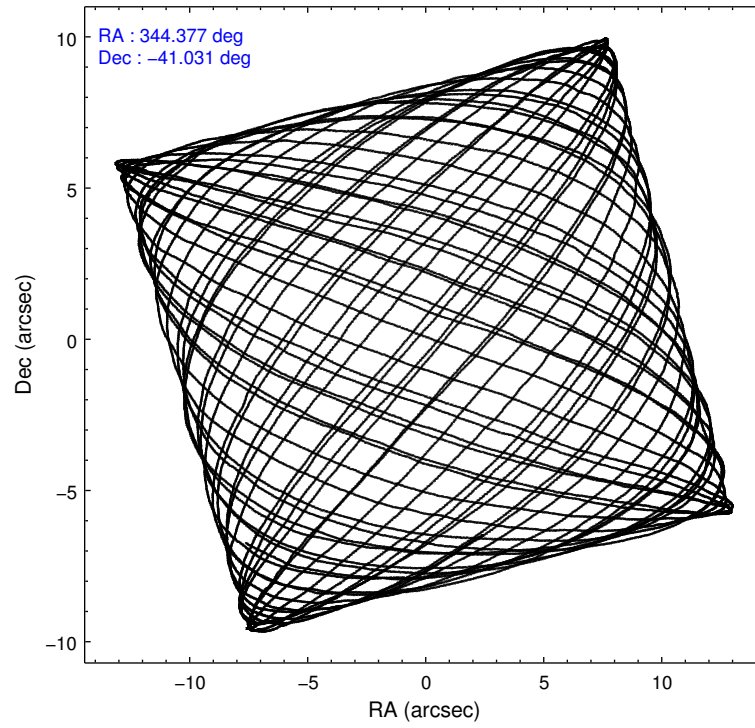
### 2.1.4 Events

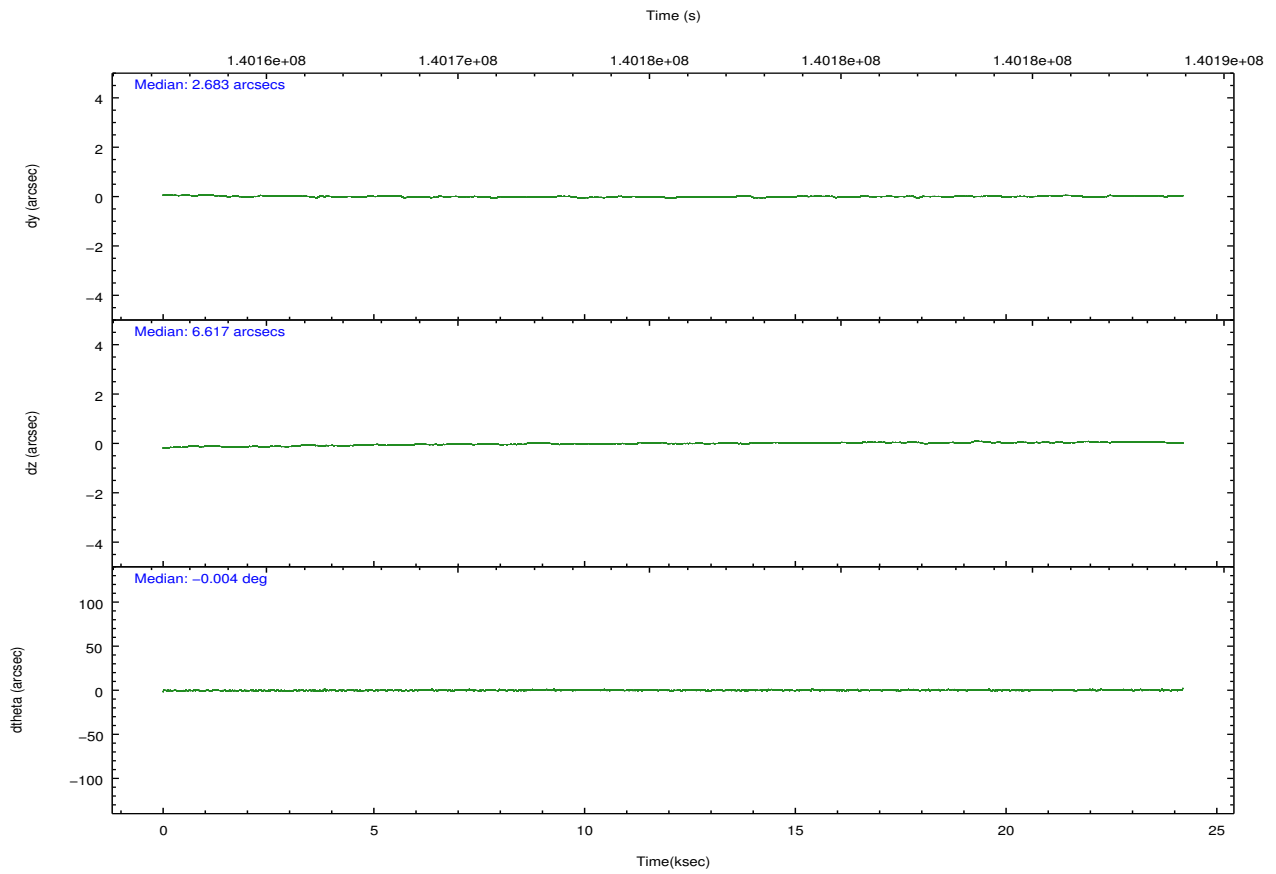
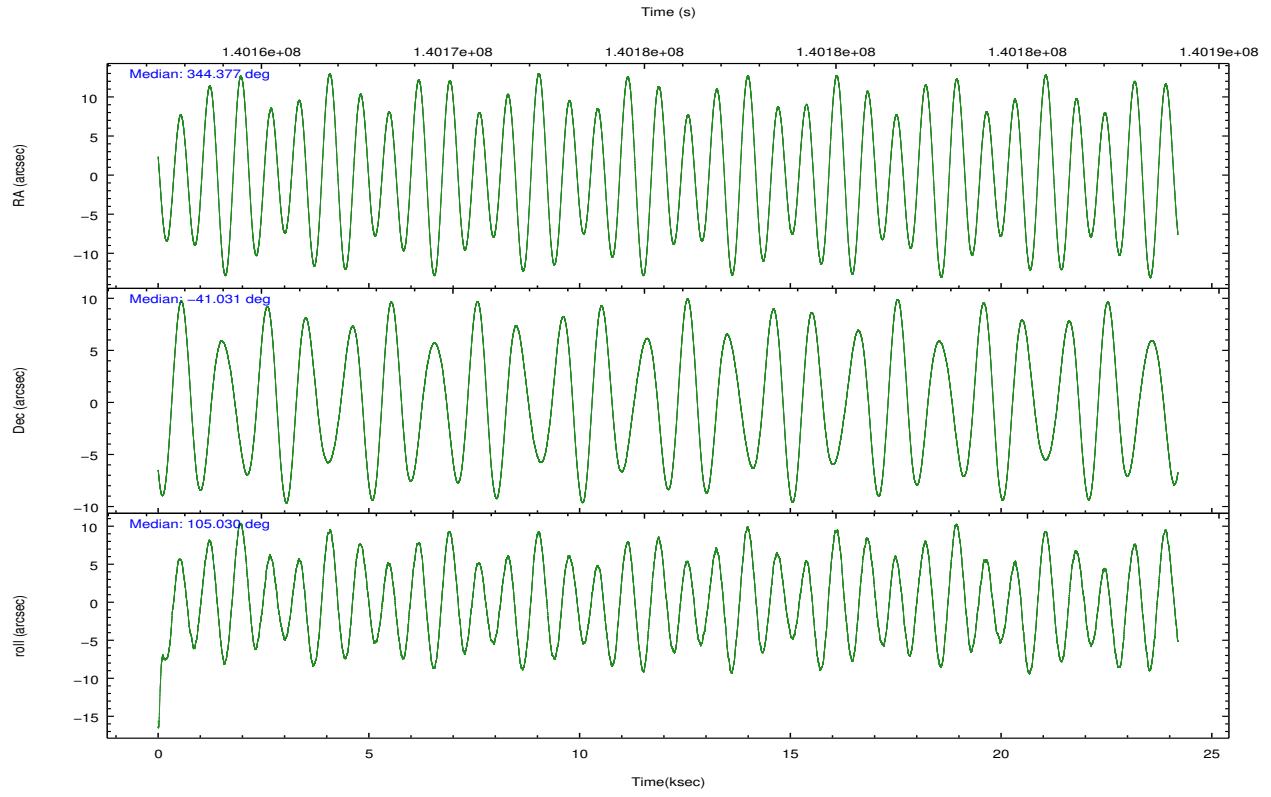
	ccd 2	ccd 3	ccd 5	ccd 6	ccd 7	ccd 8		ccd 2	ccd 3	ccd 5	ccd 6	ccd 7	ccd 8
level 1 events	150464	141875	218139	152715	200513	188100	grade 0 events	7239	7270	11467	7113	8837	12213
rejected events	133379	124922	118662	135296	115785	149895		4%	5%	5%	4%	4%	6%
rejected %	88%	88%	54%	88%	57%	79%	grade 1 events	64	66	287	67	204	88
								0%	0%	0%	0%	0%	0%
							grade 2 events	3793	3445	29061	3451	17001	8441
								2%	2%	13%	2%	8%	4%
							grade 3 events	1591	1615	3971	1739	7629	4007
								1%	1%	1%	1%	3%	2%
							grade 4 events	1501	1558	3902	1697	7525	3648
								0%	1%	1%	1%	3%	1%
							grade 5 events	5449	5843	16163	6415	19086	8355
								3%	4%	7%	4%	9%	4%
							grade 6 events	3024	3135	51530	3499	44100	10073
								2%	2%	23%	2%	21%	5%
							grade 7 events	127803	118943	101758	128734	96131	141275
								84%	83%	46%	84%	47%	75%

## 2.2 Compared Parameters

Parameter	Planned	Actual	Parameter	Planned	Actual
Instrument	ACIS	ACIS	Obspar format version number	7	7
Detector	ACIS-235678	ACIS-235678	Obspar file type	PREDICTED	ACTUAL
Grating	NONE	NONE	Obspar update status	NONE	UPDATED
Data mode	FAINT	FAINT	Number of optional ACIS chips dropped	0	0
Observation mode	POINTING	POINTING	On-chip summing requested	N	N
[deg] Pointing RA	344.402700	344.3768192967972	Subarray requested	NONE	NONE
[deg] Pointing Dec	-41.049619	-41.03063662792171	Alternating exposures requested	N	N
[deg] Pointing Roll	104.894449	105.0340872771317	[s] Primary exposure time	0.000000	3.2
[mm] SIM focus pos	-0.684267	-0.6828225247311905			
[mm] SIM defocus	0	0.001444936568705701			
[mm] SIM translation stage pos	-190.132523	-190.1425803651734			
[mm] SIM translation stage offset	0	0.01005778216563158			
[s] Observation start time (MET)	140163716.184000	140162590.7266			
Observation start date	2002-06-11T06:20:52	2002-06-11T06:03:10			
[s] Observation end time (MET)	140187716.184000	140188156.79015			
Observation end date	2002-06-11T13:00:52	2002-06-11T13:09:16			
Read mode	TIMED	TIMED			

## 2.3 Aspect



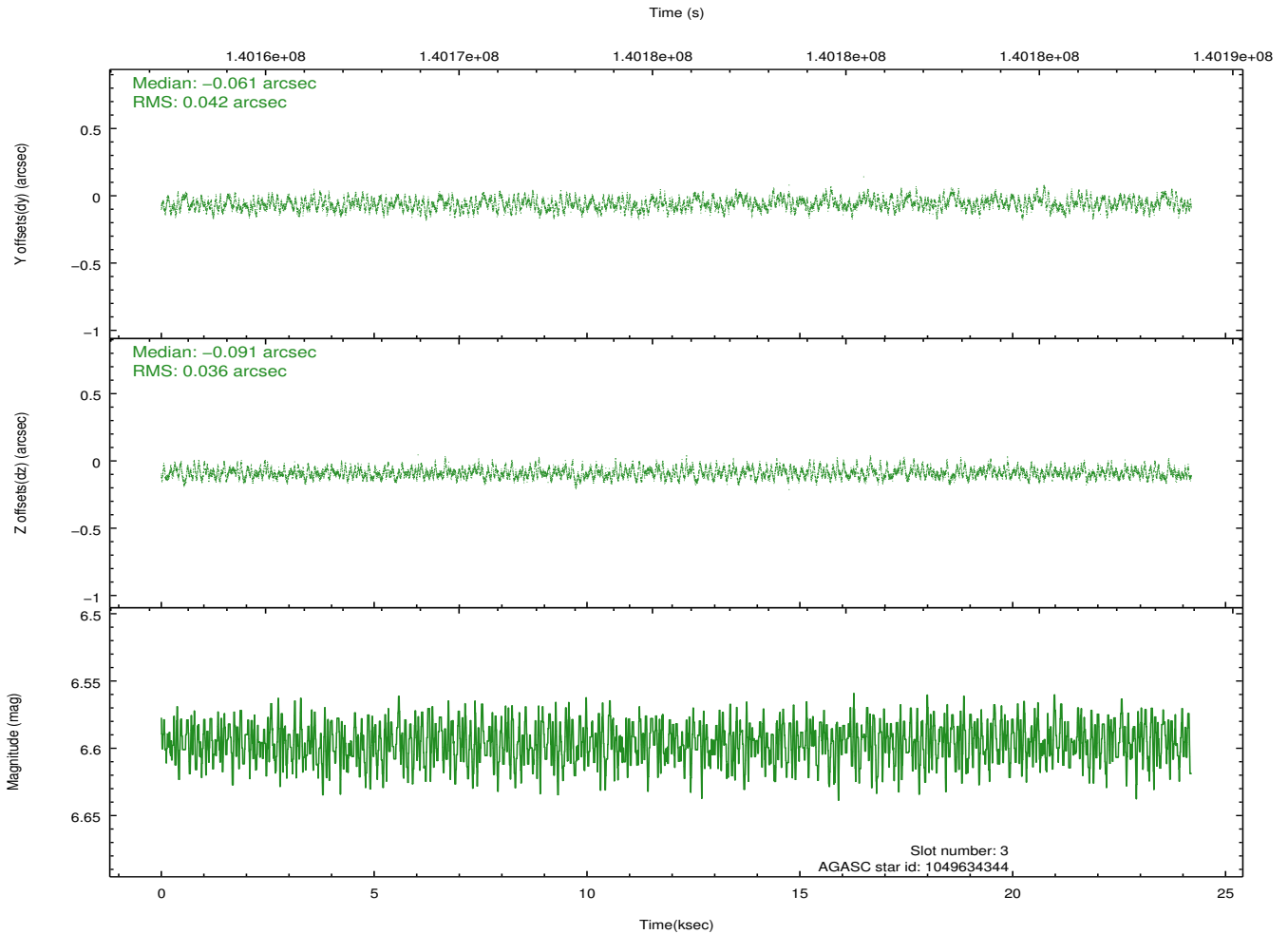
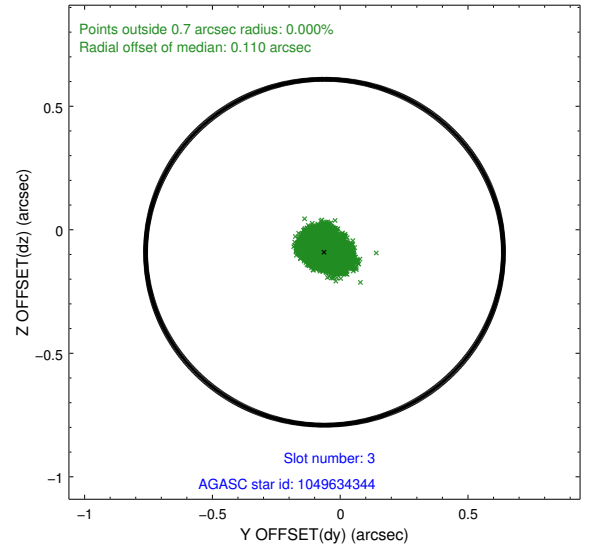
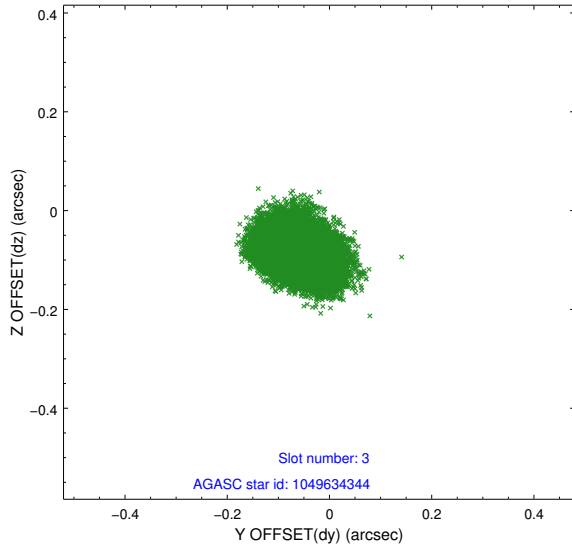


### Slot Statistics

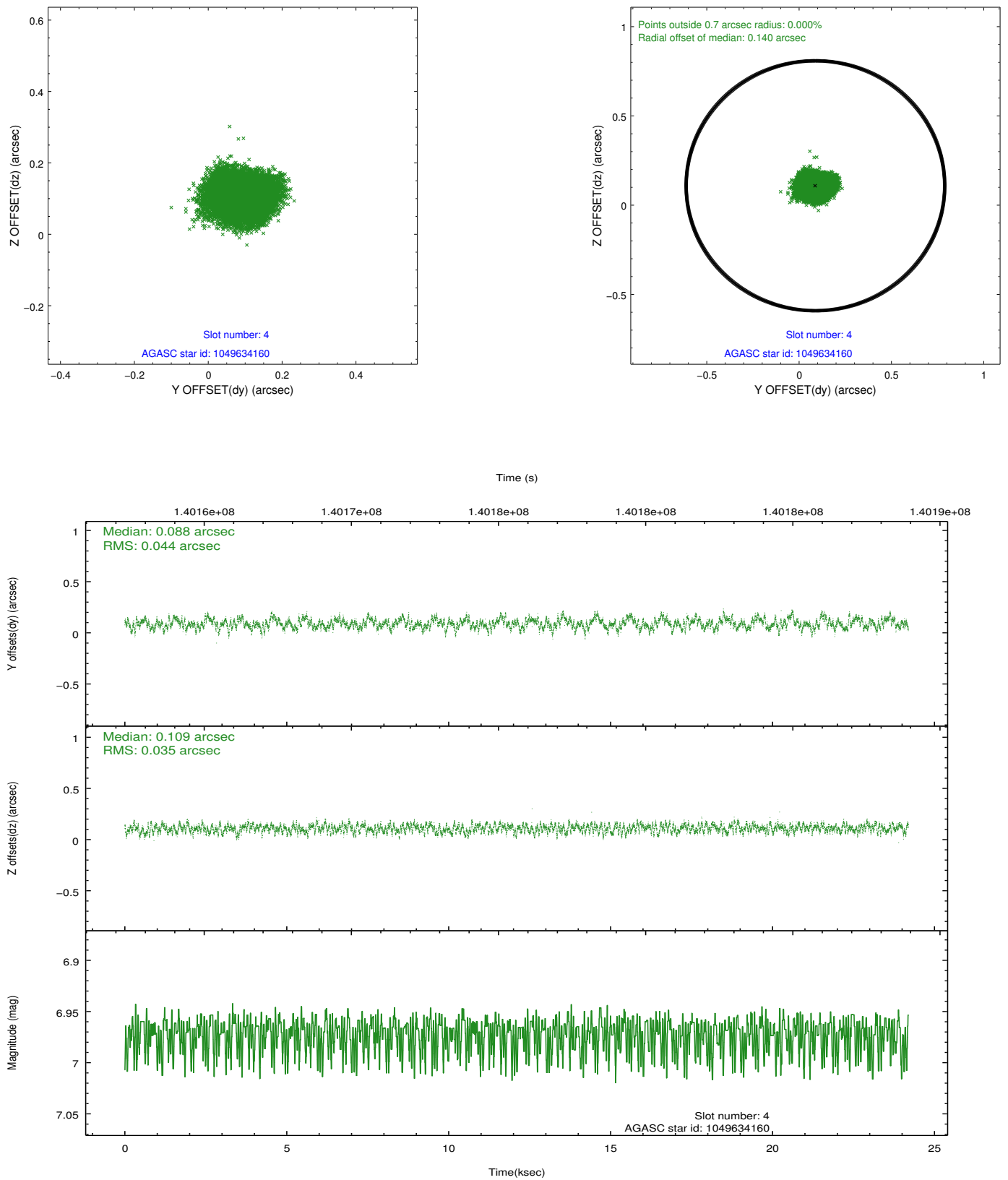
slot	status	id	mag	n_pts	med_dy	med_dz	dr1	dr2	ra	dec	mean_y	mean_z
0	FID	ACIS-S-3	7.35	5901	-0.109	-0.058	0.007	0.012	0.000000	0.000000	57.77	-1856.82
1	FID	ACIS-S-4	7.20	5901	0.018	0.085	0.006	0.010	0.000000	0.000000	2158.06	180.70
2	FID	ACIS-S-5	7.24	5902	0.063	-0.017	0.006	0.011	0.000000	0.000000	-1807.93	174.45
3	GUIDE	1049634344	6.60	11804	-0.061	-0.091	0.060	0.094	343.976575	-41.096753	130.73	1161.47
4	GUIDE	1049634160	6.97	11804	0.088	0.109	0.062	0.095	345.100702	-41.151222	-846.61	-1732.10
5	GUIDE	1049632784	8.35	11803	-0.300	-0.122	0.051	0.082	343.716437	-40.670072	1794.94	1461.61
6	GUIDE	1049634896	8.18	11803	0.265	0.230	0.052	0.083	345.162042	-41.514554	-2151.44	-1545.28
7	GUIDE	1049635176	10.17	11729	0.003	-0.126	0.136	0.223	343.420981	-40.689272	1928.06	2260.22

## 2.4 Star Slots

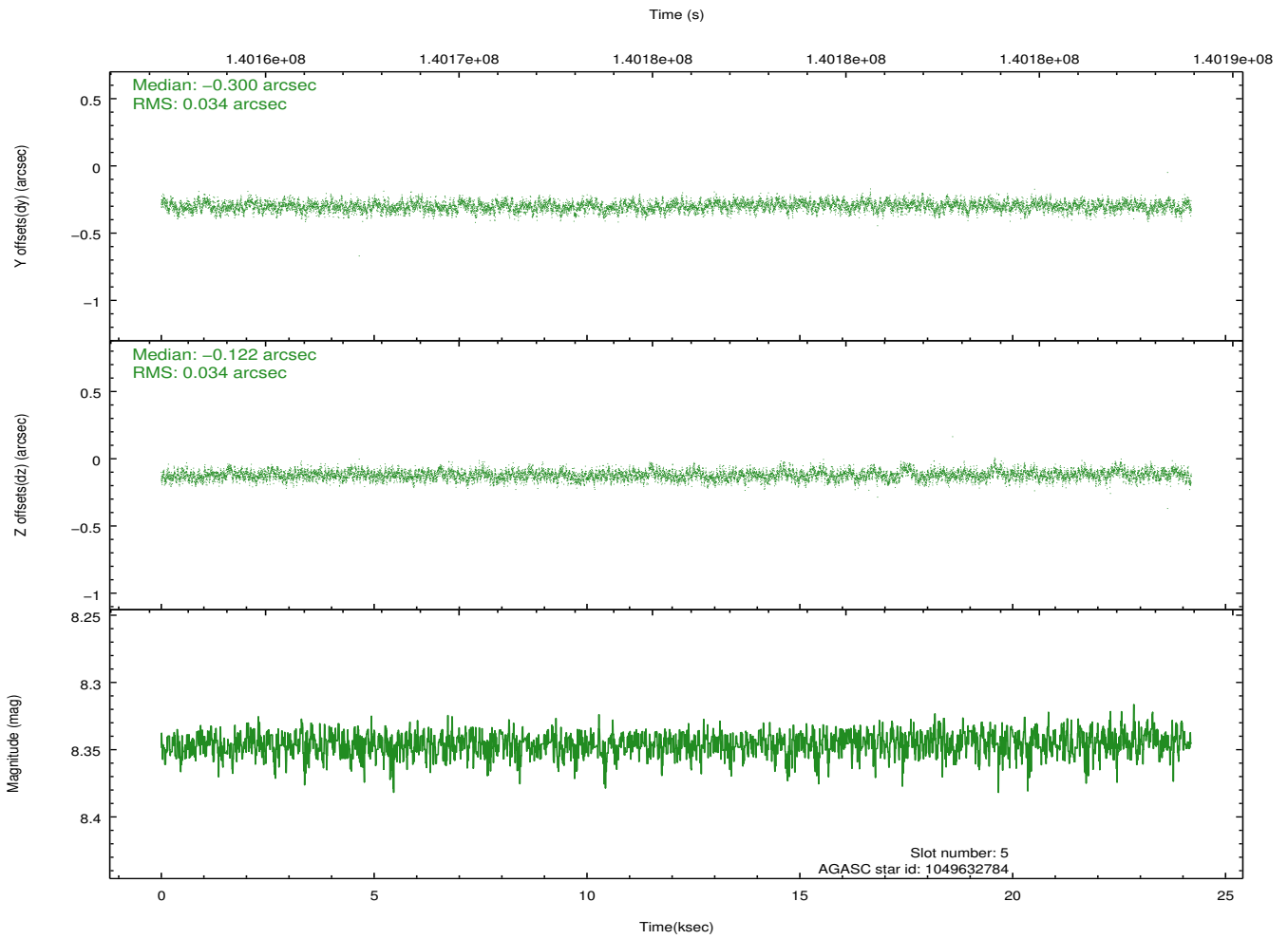
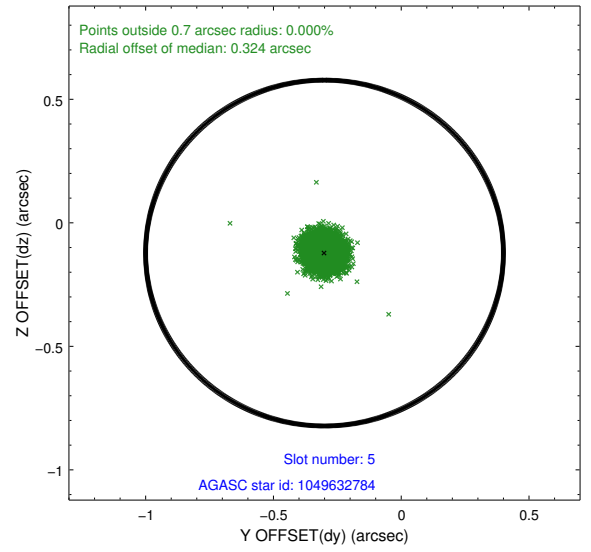
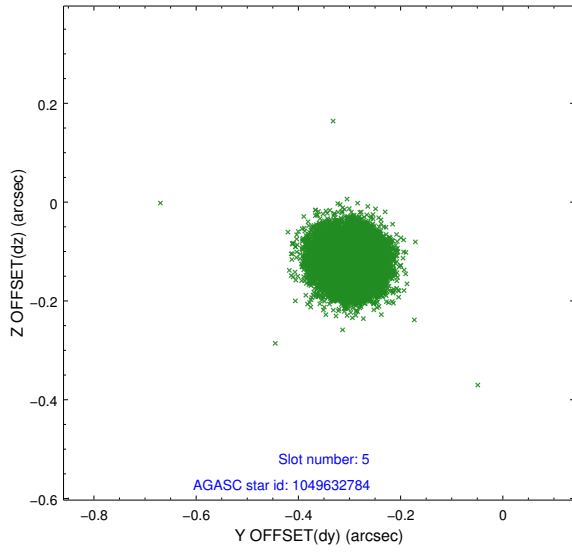
### 2.4.1 Slot 3



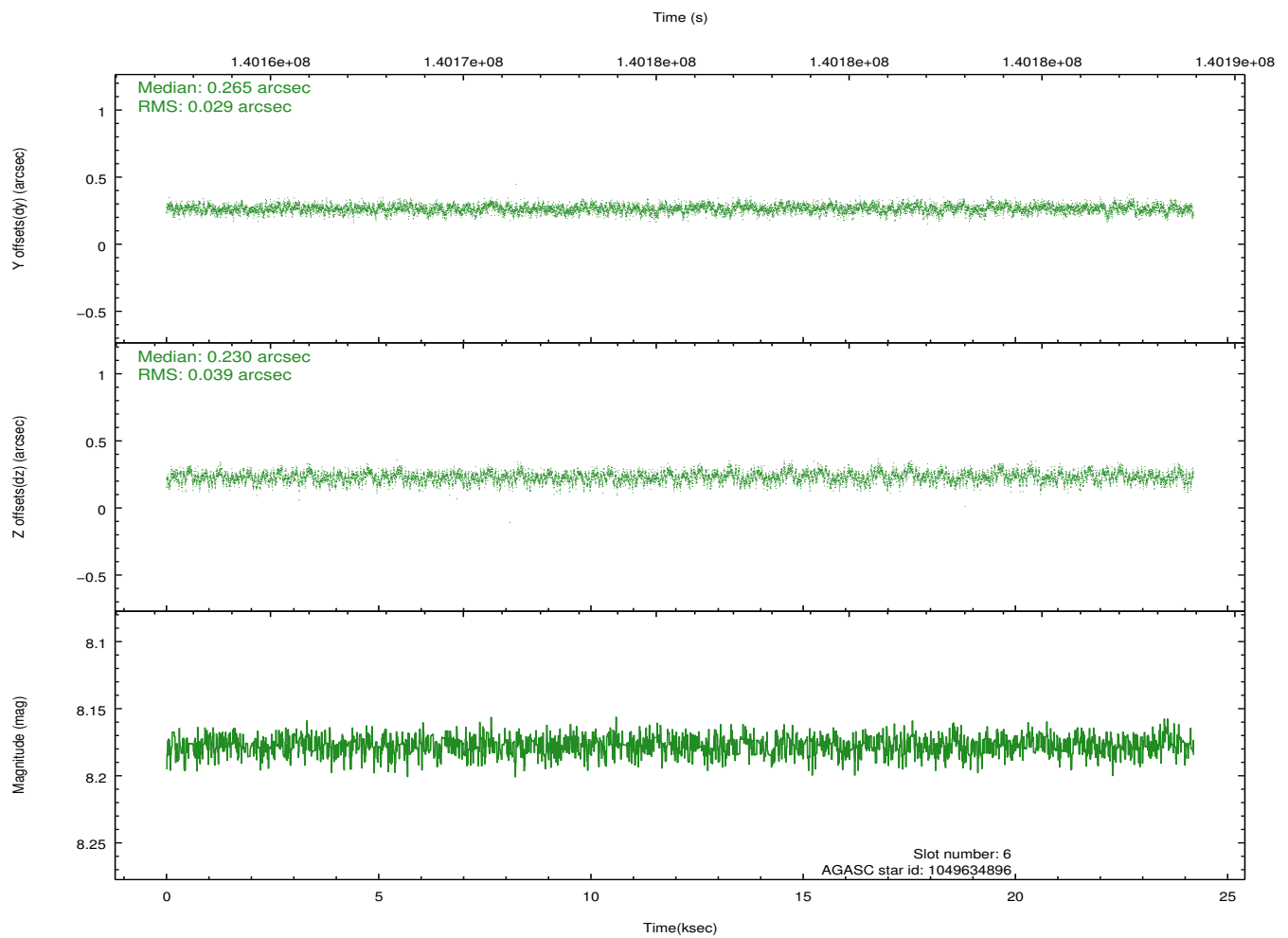
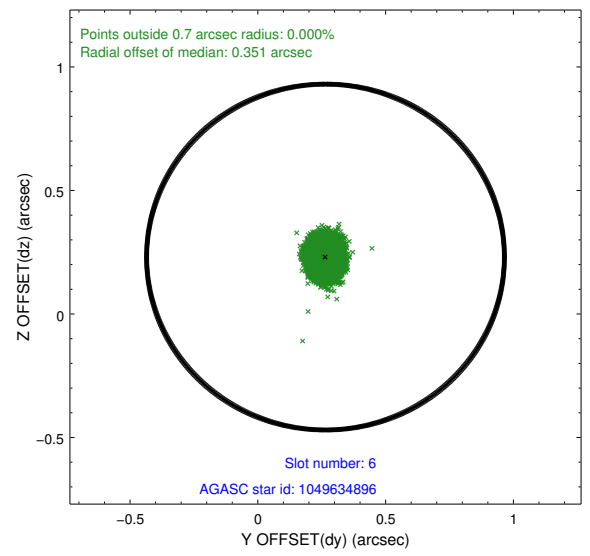
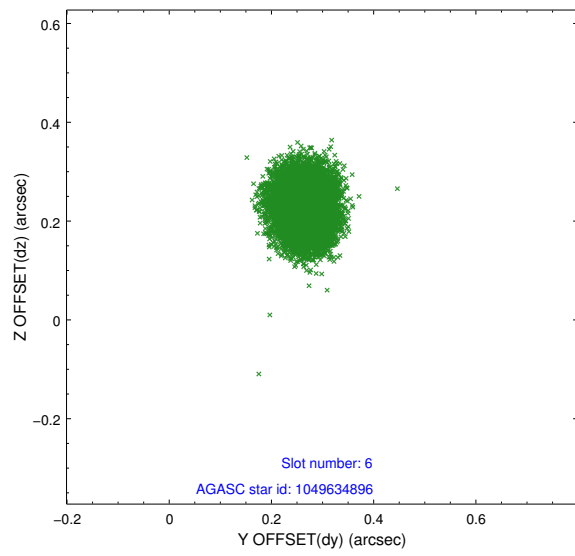
## 2.4.2 Slot 4



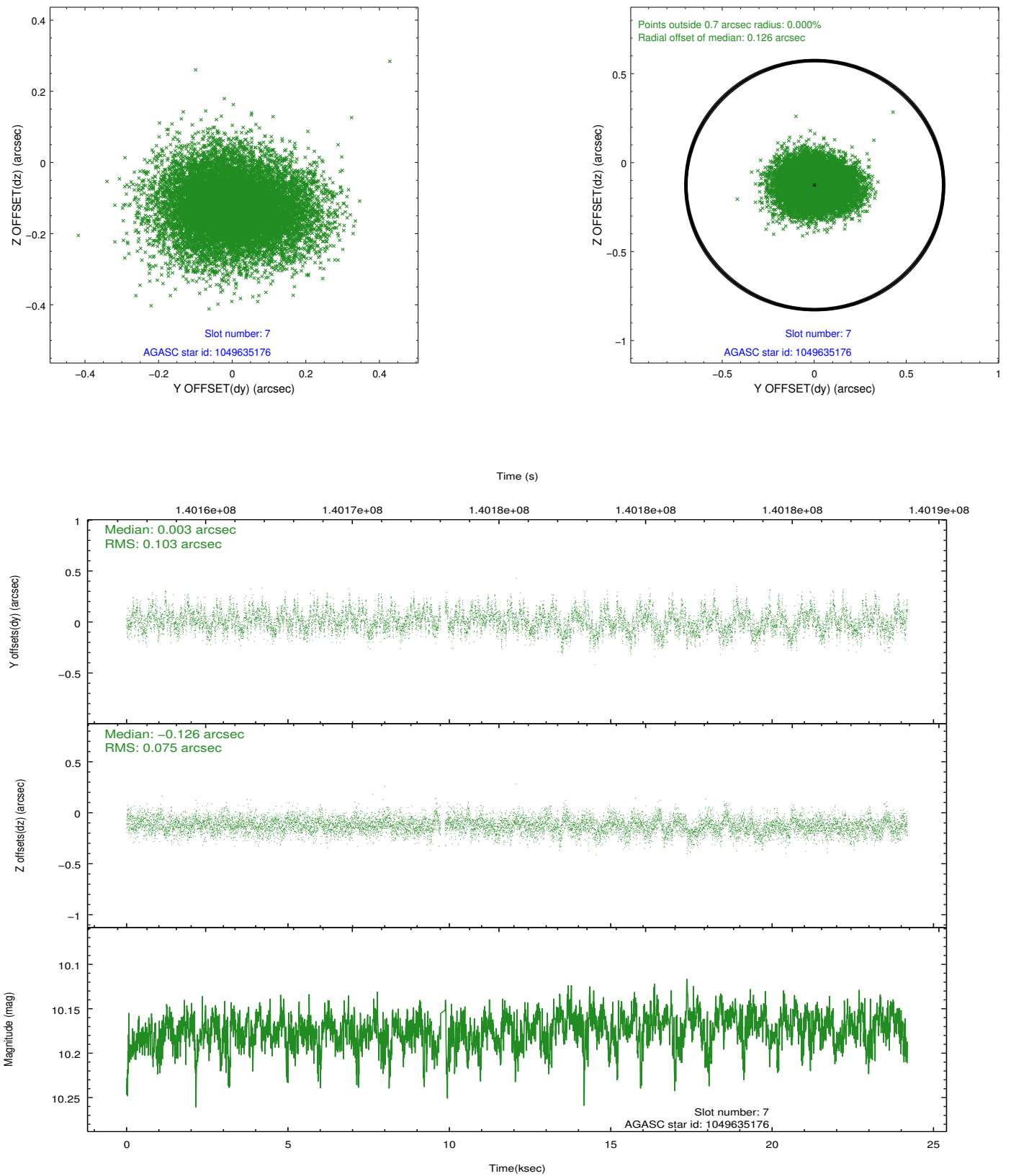
### 2.4.3 Slot 5



## 2.4.4 Slot 6

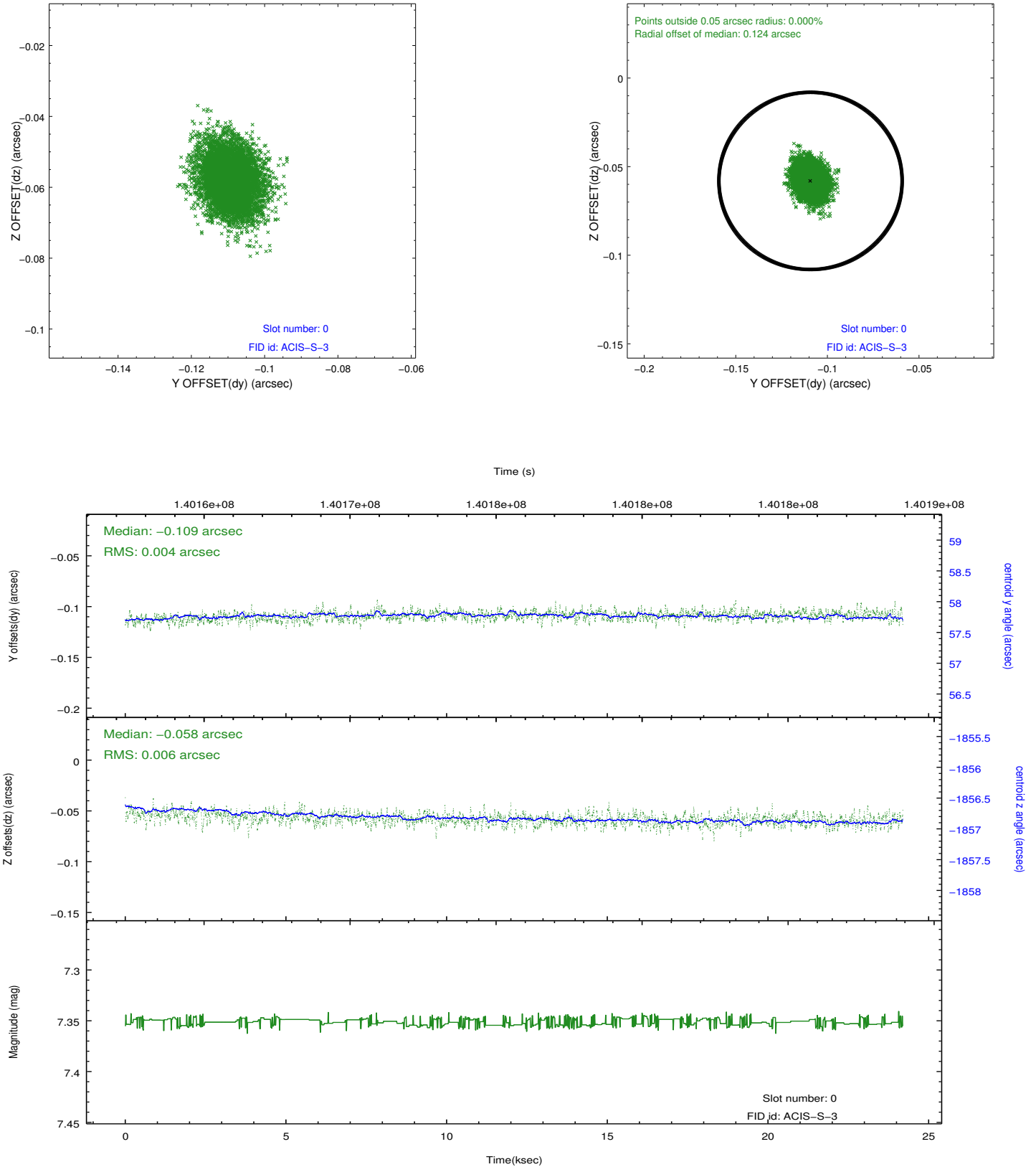


## 2.4.5 Slot 7

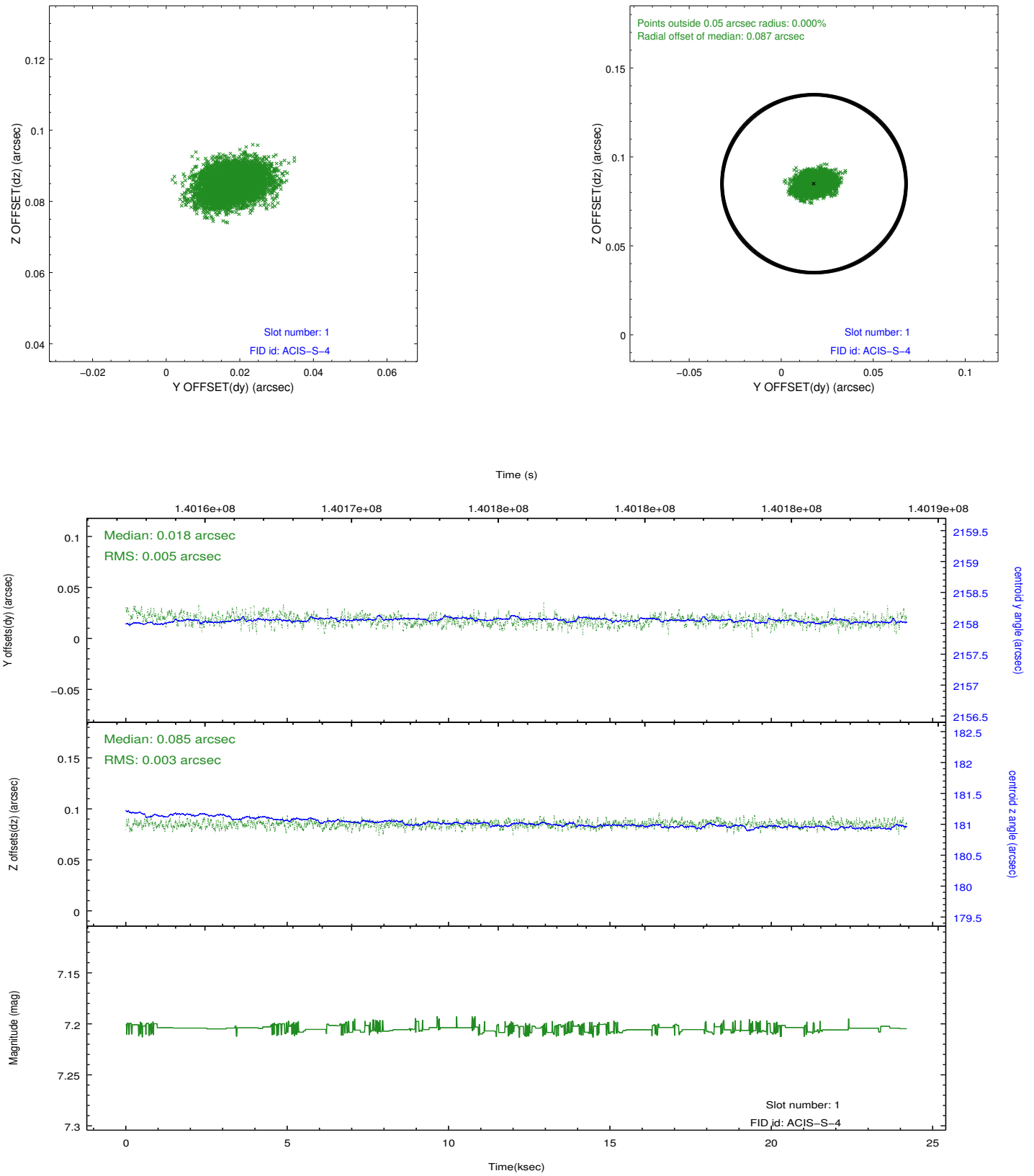


## 2.5 FID Slots

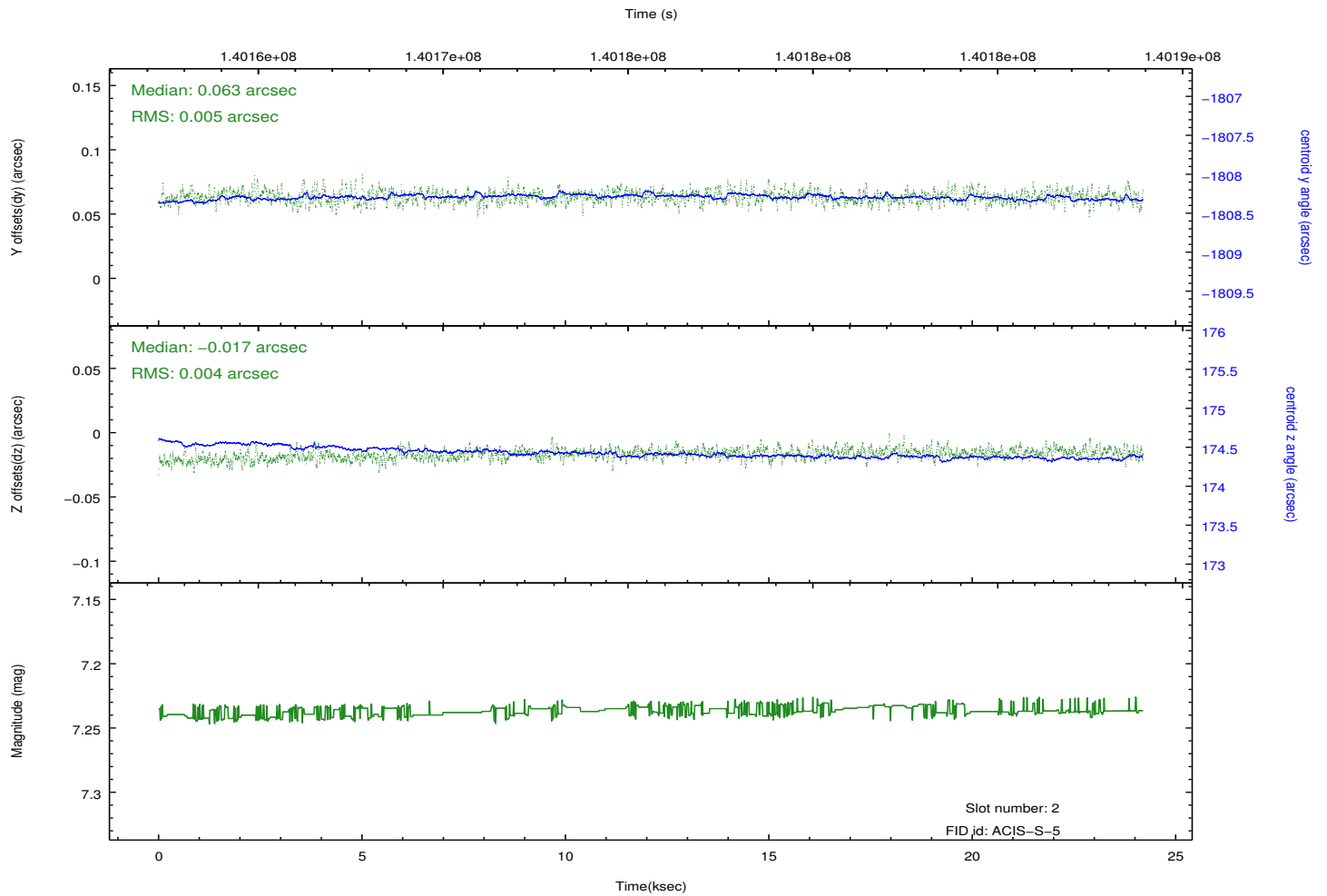
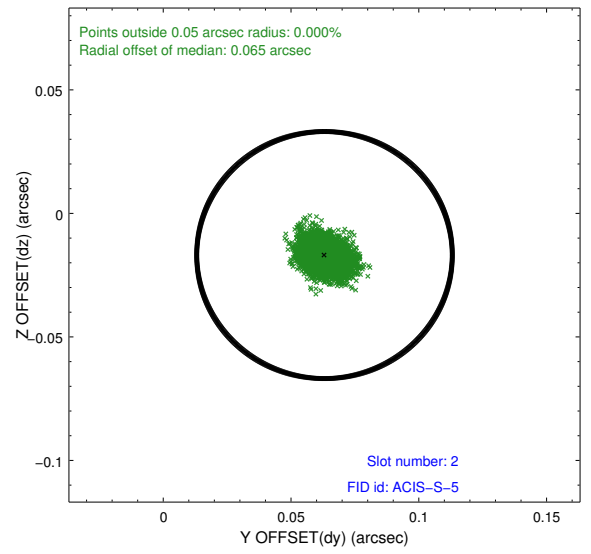
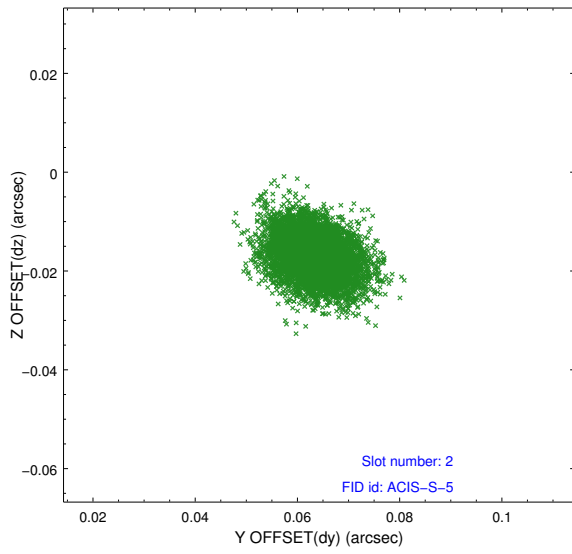
### 2.5.1 Slot 0



## 2.5.2 Slot 1



### 2.5.3 Slot 2



# A Summary

## A.1 Status

V&V Scientist	Beth Sundheim
V&V Date (YYYY-MM-DD)	2012.10.18
V&V Edition	1
V&V Disposition and Status	OK
V&V Charge Time	24.188

## A.2 Comments