

V&V Reference Report

L2 ASCDS Version : 8.4.5

Observation 3586 - L2 Version 3
Chandra X-Ray Center

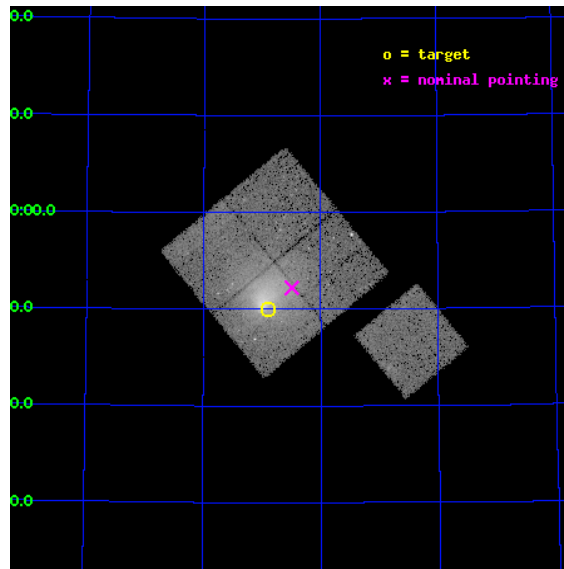
L2 Processing Date : Oct 19 2012

Contents

1	Front	2
2	OBI	3
2.1	OBI	3
2.1.1	Images	3
2.1.2	Bias	3
2.1.3	Parameters	4
2.1.4	Events	4
2.2	Compared Parameters	5
2.3	Aspect	6
2.4	Star Slots	9
2.4.1	Slot 3	9
2.4.2	Slot 4	10
2.4.3	Slot 5	11
2.4.4	Slot 6	12
2.4.5	Slot 7	13
2.5	FID Slots	14
2.5.1	Slot 0	14
2.5.2	Slot 1	15
2.5.3	Slot 2	16
A	Summary	17
A.1	Status	17
A.2	Comments	17

1 Front

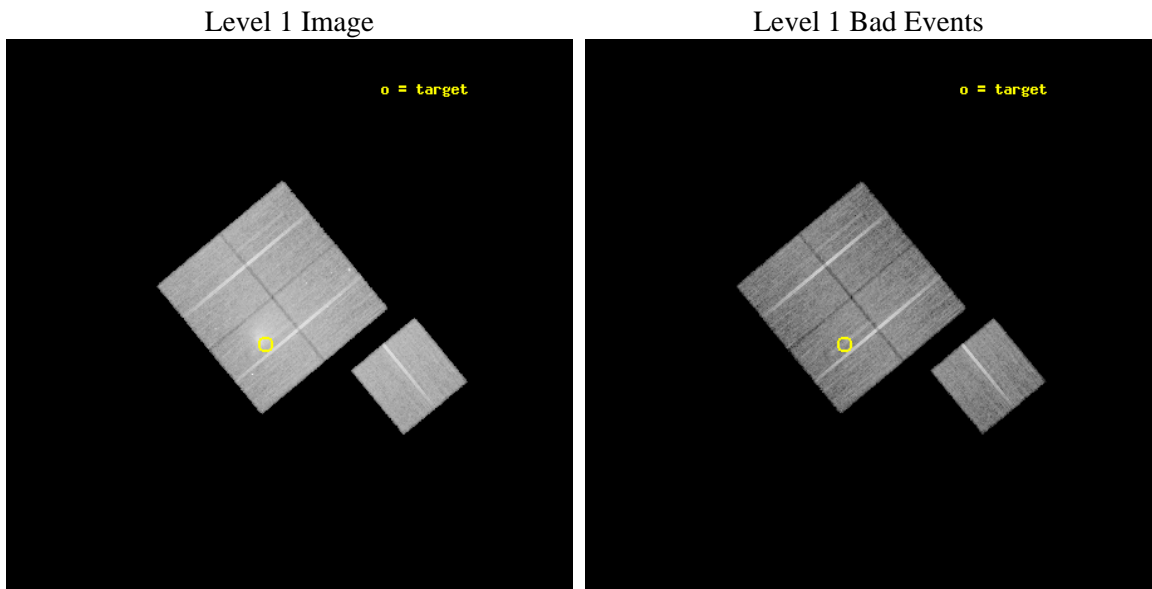
seq_num	800307	Sequence number
obs_id	3586	Observation id
title	X-RAY/SZ DETERMINATION OF COSMOLOGICAL PARAMETERS	Proposal title
observer	DR. LEON VANSPEYBROECK	Principal investigator
object	A665	Source name
dtycycle	0	
cycle	P	events from which exps? Prim/Second/Both
ra_targ	127.722083	Observer's specified target RA [deg]
dec_targ	65.834	Observer's specified target Dec [deg]
ra_nom	127.62306506678	Nominal RA [deg]
dec_nom	65.870186261642	Nominal Dec [deg]
roll_nom	140.36591671043	Nominal Roll [deg]
revision	3	Processing version of data
ontime	30116.458961844	Sum of GTIs [s]
livetime	29722.965254093	Livetime [s]
ontime0	30113.318001539	Sum of GTIs [s]
ontime1	30113.317941785	Sum of GTIs [s]
ontime2	30119.599942058	Sum of GTIs [s]
ontime3	30116.458961844	Sum of GTIs [s]
ontime6	30116.458961815	Sum of GTIs [s]
l2events	114120	Number of level 2 events



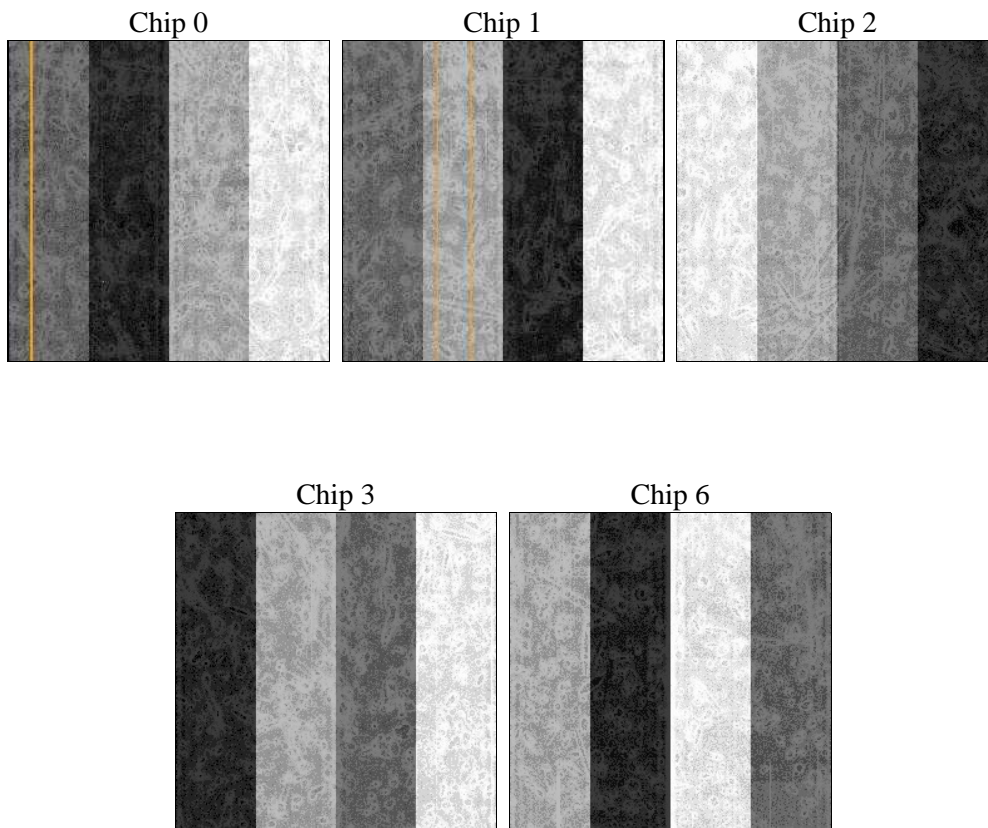
2 OBI

2.1 OBI

2.1.1 Images



2.1.2 Bias



2.1.3 Parameters

obi_num	1	Obi number	sched_exp_time	30000.000000	[s] Scheduled observation exposure time
ascdsver	8.4.5	Processing system revision	ontime	30116.458961844	Sum of GTIs [s]
caldbver	4.5.2	 	ontime0	30113.318001539	Sum of GTIs [s]
date	2012-10-19T14:37:31	Date and time of file creation	ontime1	30113.317941785	Sum of GTIs [s]
revision	3	Processing version of data	ontime2	30119.599942058	Sum of GTIs [s]
			ontime3	30116.458961844	Sum of GTIs [s]
			ontime6	30116.458961815	Sum of GTIs [s]
			l1events	820998	Number of level 1 events

2.1.4 Events

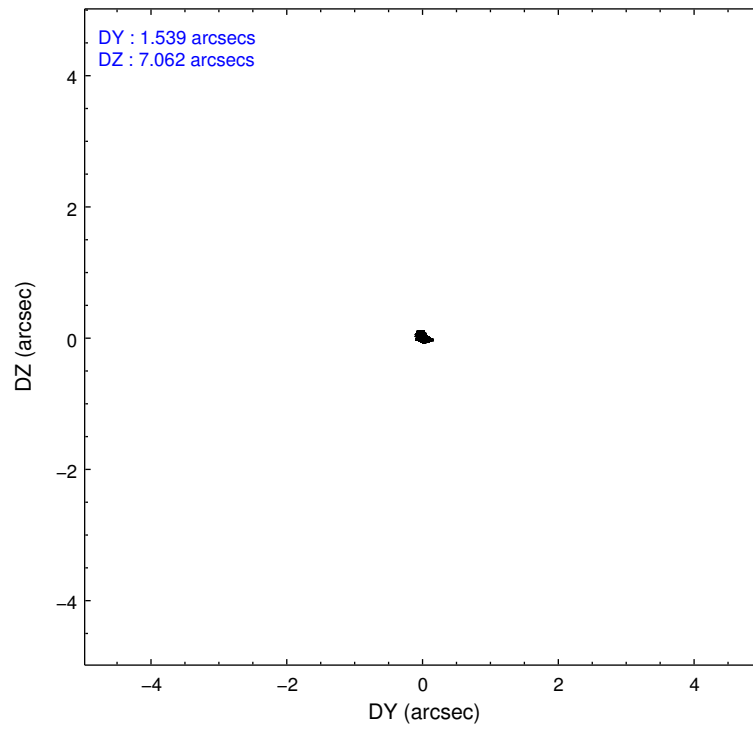
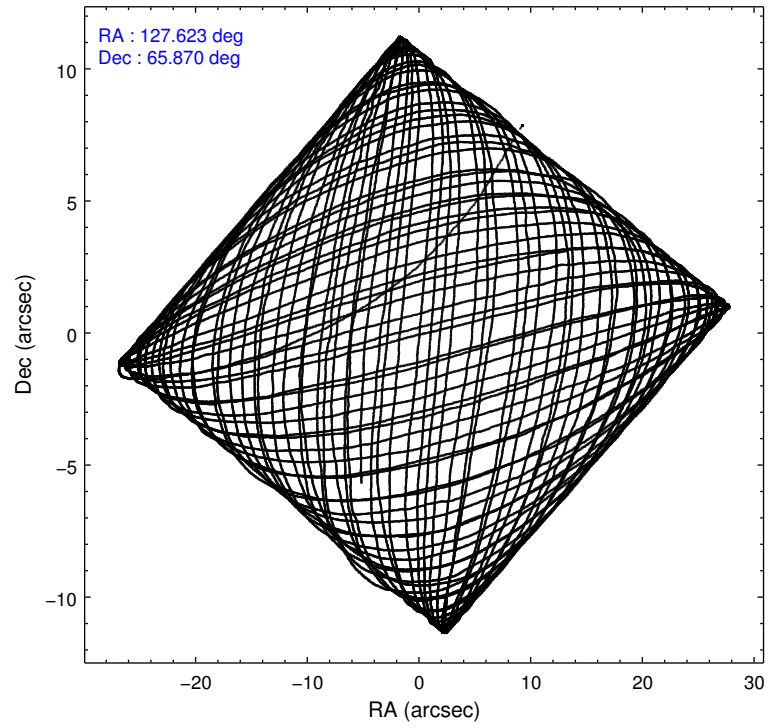
	ccd 0	ccd 1	ccd 2	ccd 3	ccd 6
level 1 events	142622	152718	168891	195674	161093
rejected events	125745	129598	148547	143043	144915
rejected %	88%	84%	87%	73%	89%

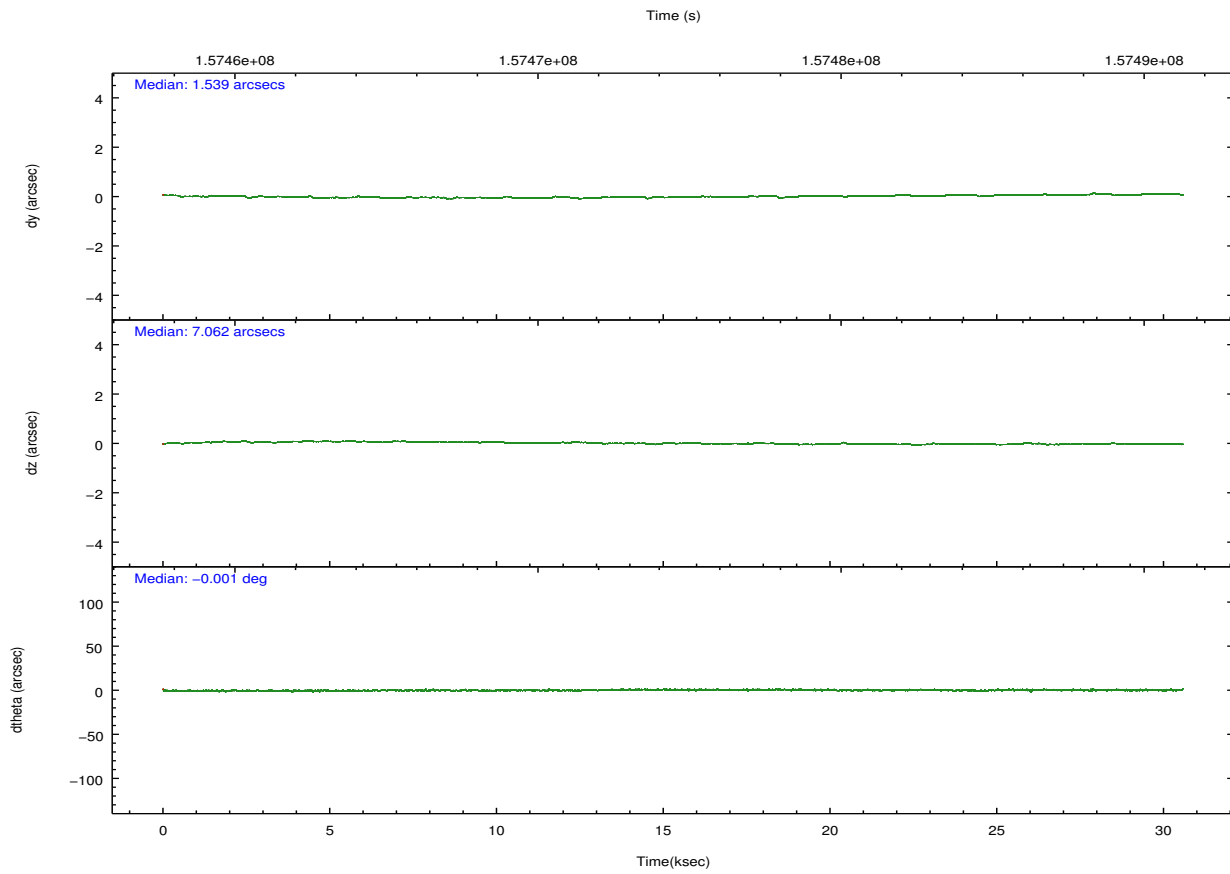
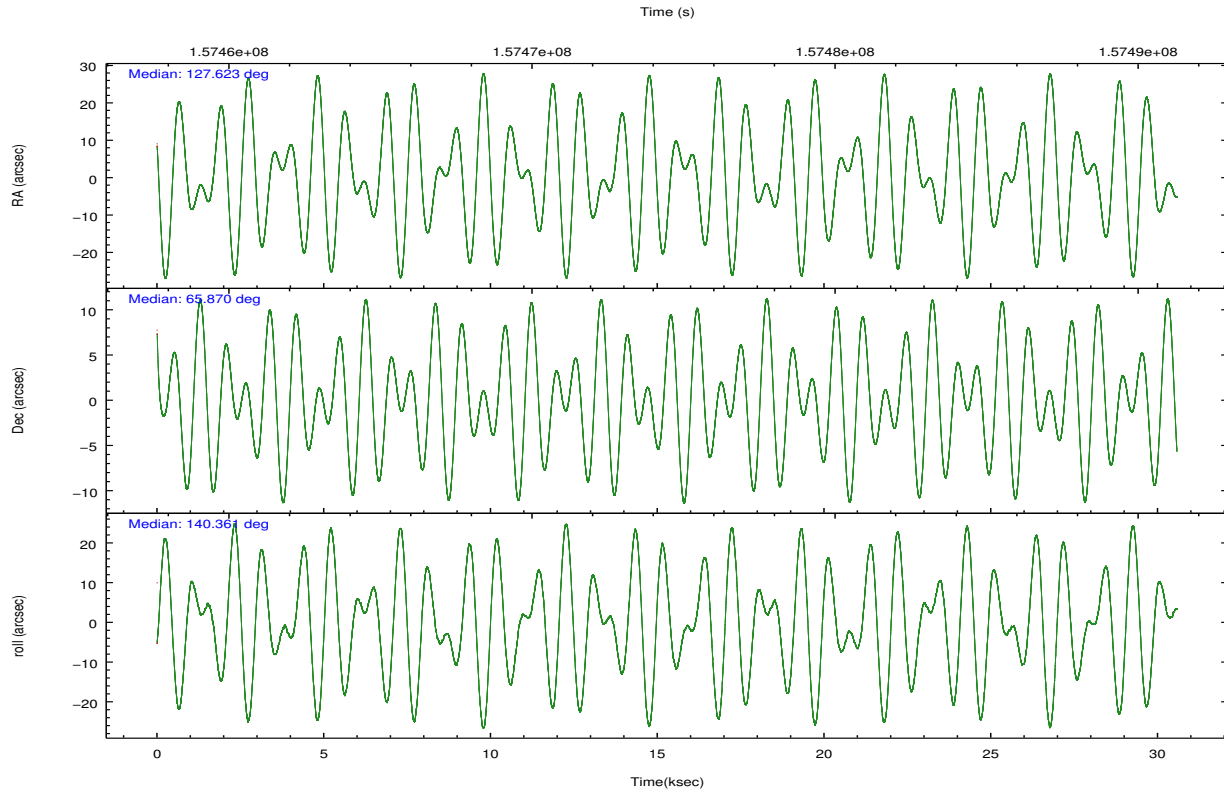
	ccd 0	ccd 1	ccd 2	ccd 3	ccd 6
grade 0 events	6641	10962	9732	36411	6088
	4%	7%	5%	18%	3%
grade 1 events	89	78	100	210	52
	0%	0%	0%	0%	0%
grade 2 events	3665	4245	3885	6794	3255
	2%	2%	2%	3%	2%
grade 3 events	1918	2147	1982	2856	1810
	1%	1%	1%	1%	1%
grade 4 events	1750	2116	1856	2786	1737
	1%	1%	1%	1%	1%
grade 5 events	5194	5624	5154	6201	5812
	3%	3%	3%	3%	3%
grade 6 events	2908	3654	2891	3797	3294
	2%	2%	1%	1%	2%
grade 7 events	120457	123892	143291	136619	139045
	84%	81%	84%	69%	86%

2.2 Compared Parameters

Parameter	Planned	Actual	Parameter	Planned	Actual
Instrument	ACIS	ACIS	Obspar format version number	7	7
Detector	ACIS-01236	ACIS-01236	Obspar file type	PREDICTED	ACTUAL
Grating	NONE	NONE	Obspar update status	NONE	UPDATED
Data mode	VFAINT	VFAINT	Number of optional ACIS chips dropped	0	0
Observation mode	POINTING	POINTING	On-chip summing requested	N	N
[deg] Pointing RA	127.689171	127.6230650667755	Subarray requested	NONE	NONE
[deg] Pointing Dec	65.865696	65.87018626164165	Alternating exposures requested	N	N
[deg] Pointing Roll	140.096893	140.3659167104315	[s] Primary exposure time	0.000000	3.1
[mm] SIM focus pos	-0.782348	-0.7809083437167272			
[mm] SIM defocus	0	0.001439871863259334			
[mm] SIM translation stage pos	-225.840463	-225.8433433320239			
[mm] SIM translation stage offset	-7.752	-7.749109670905796			
[s] Observation start time (MET)	157459751.184000	157458596.21692			
Observation start date	2002-12-28T10:48:07	2002-12-28T10:29:56			
[s] Observation end time (MET)	157489751.184000	157490064.23074			
Observation end date	2002-12-28T19:08:07	2002-12-28T19:14:24			
Read mode	TIMED	TIMED			

2.3 Aspect





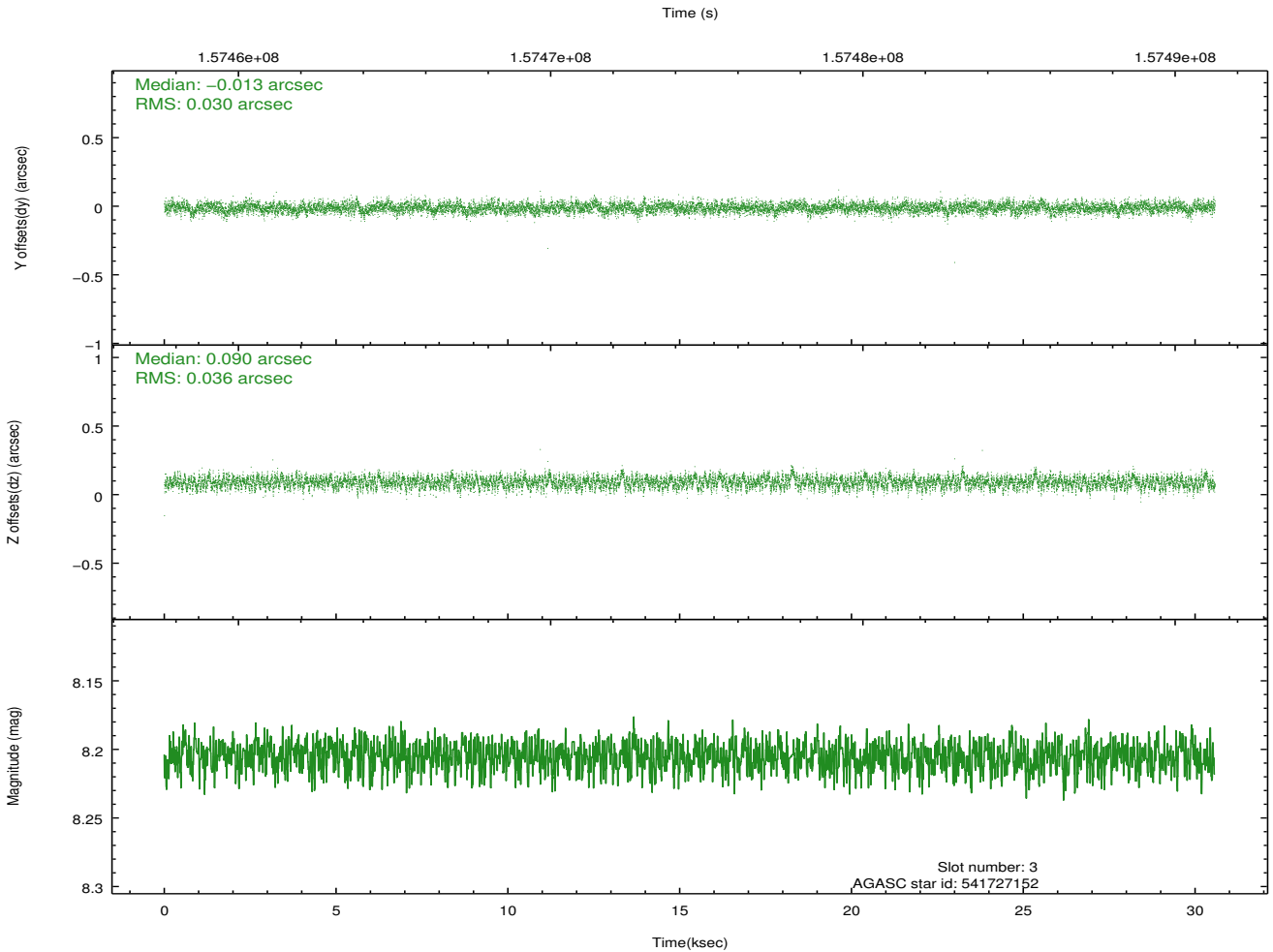
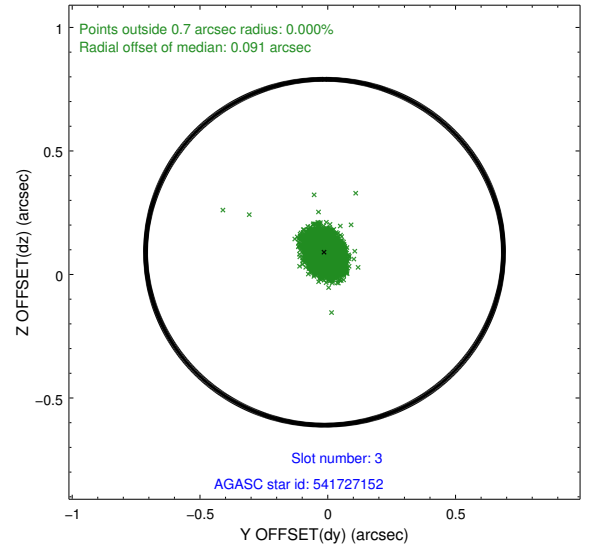
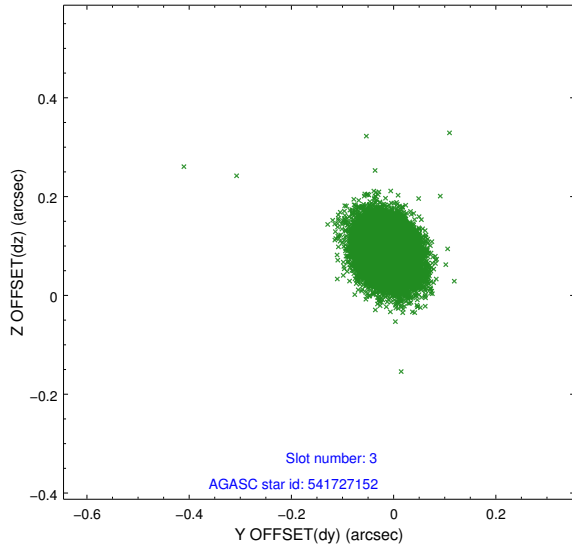
Slot Statistics

slot	status	id	mag	n_pts	med_dy	med_dz	dr1	dr2	ra	dec	mean_y	mean_z
0	FID	ACIS-I-1	7.23	7458	0.086	-0.049	0.007	0.011	0.000000	0.000000	938.21	-989.61
1	FID	ACIS-I-5	7.22	7458	-0.171	0.100	0.007	0.013	0.000000	0.000000	-1810.08	908.02
2	FID	ACIS-I-6	7.26	7457	-0.006	0.020	0.008	0.013	0.000000	0.000000	403.63	1552.49
3	GUIDE	541727152	8.21	14908	-0.013	0.090	0.050	0.080	127.263195	66.213821	1279.87	-566.06
4	GUIDE	541728304	9.47	14904	0.034	0.109	0.080	0.130	129.452175	65.893478	-1900.53	-1767.46
5	GUIDE	541728480	8.43	14909	-0.022	-0.066	0.062	0.104	125.879819	65.741108	1789.51	2031.05
6	GUIDE	541729480	9.07	14895	0.024	-0.040	0.071	0.116	126.985305	65.880968	833.45	617.75
7	GUIDE	541730880	8.09	14915	-0.021	-0.095	0.047	0.076	127.501712	65.260390	-1181.25	1852.35

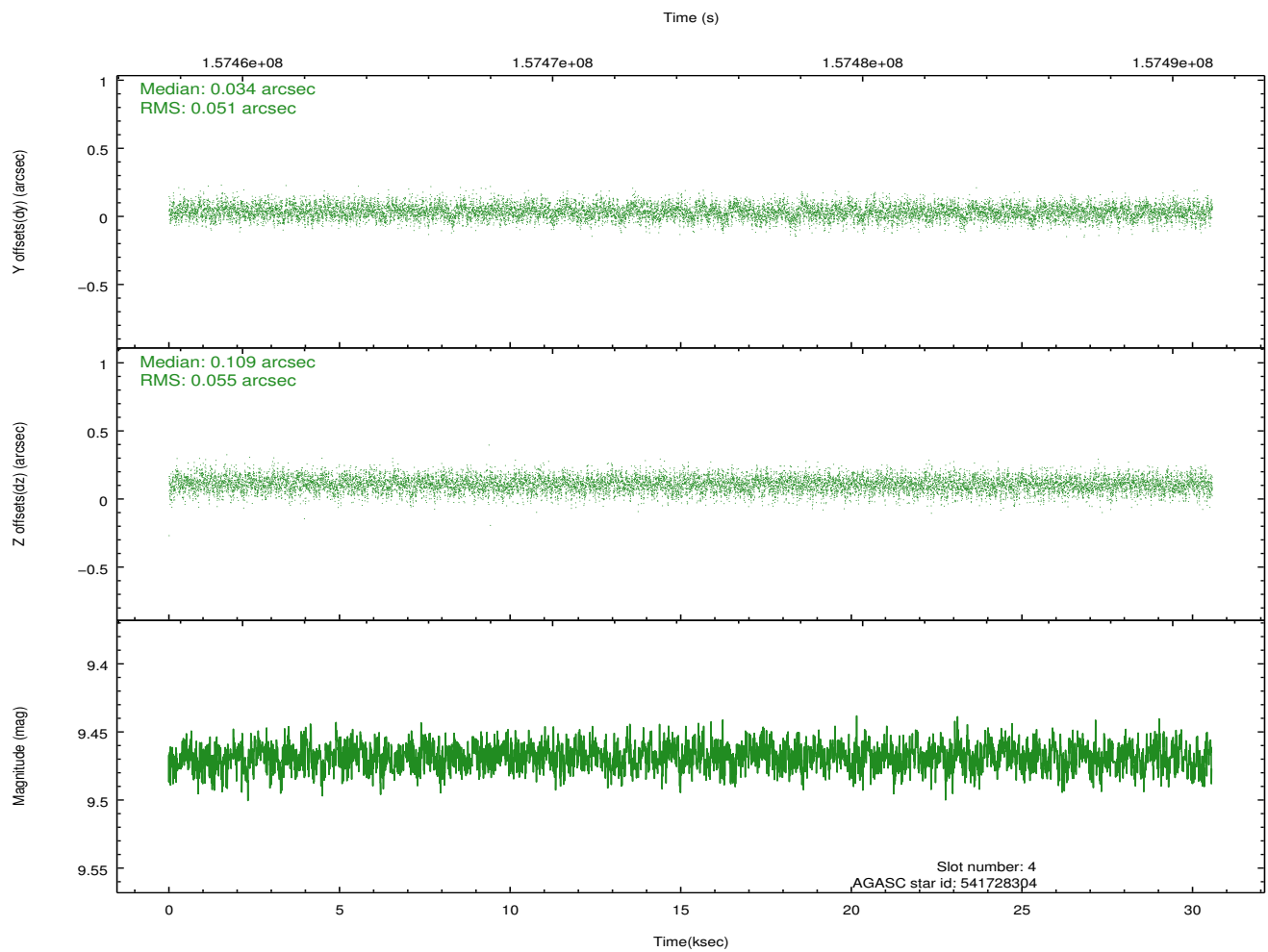
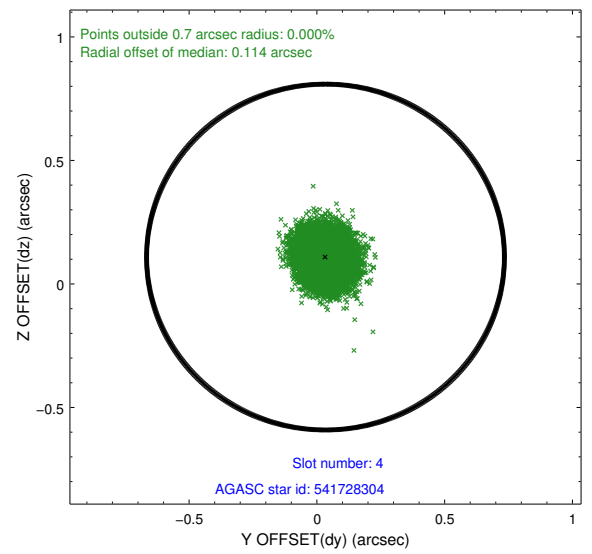
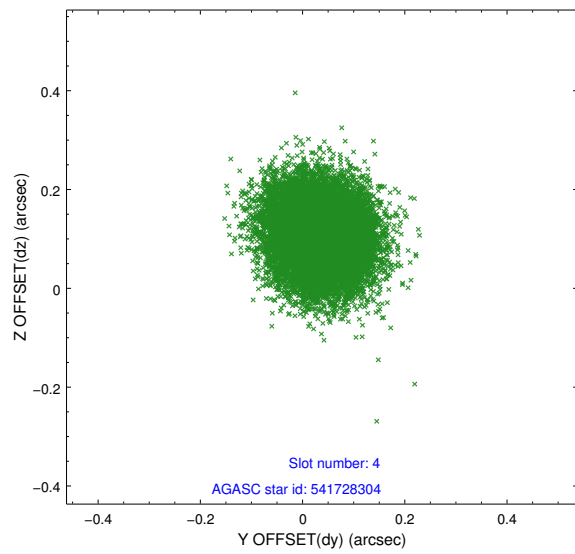
∞

2.4 Star Slots

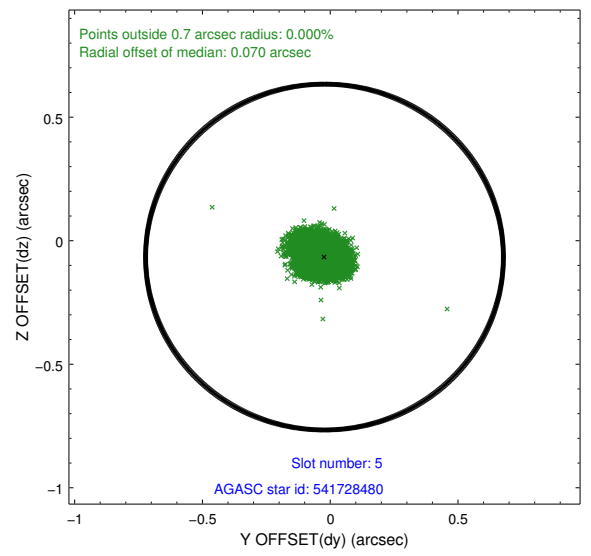
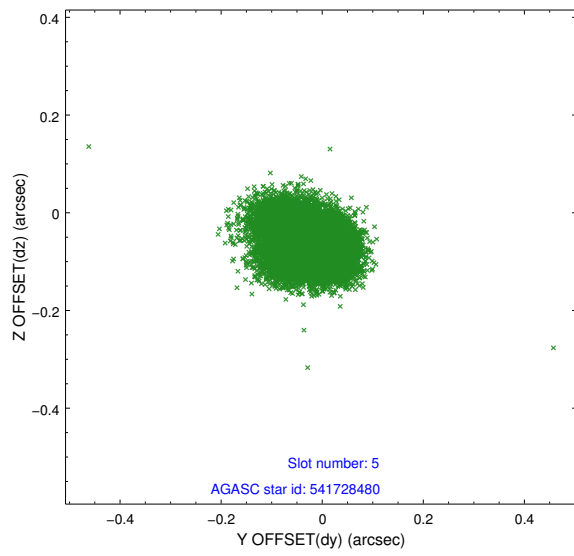
2.4.1 Slot 3



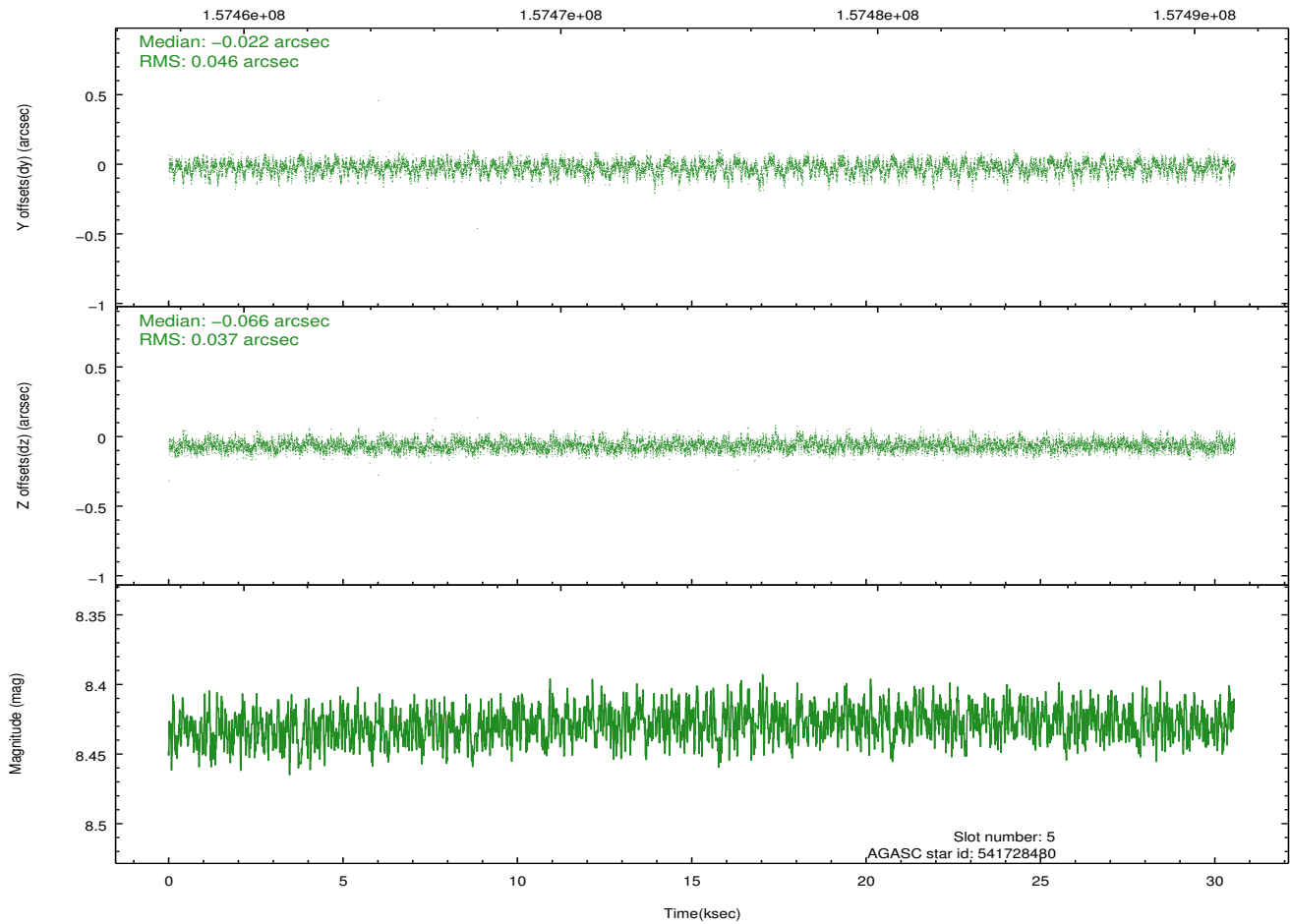
2.4.2 Slot 4



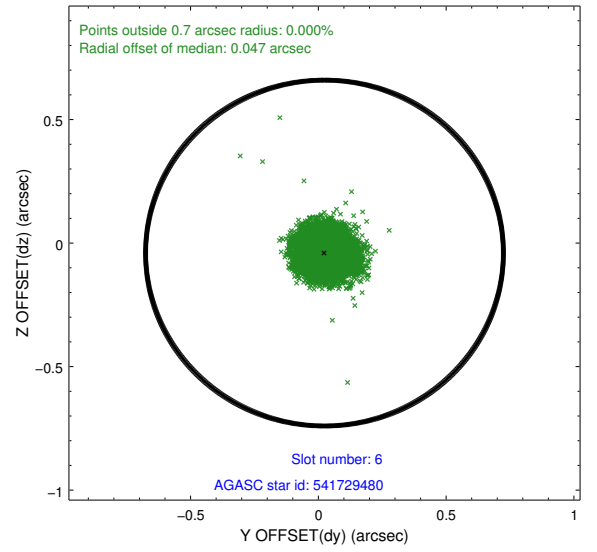
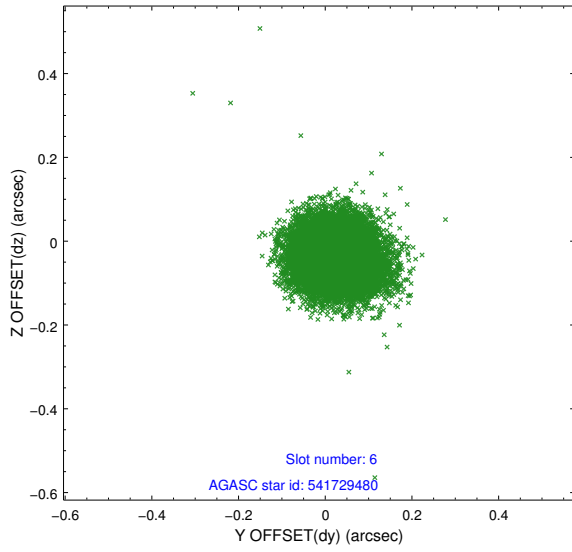
2.4.3 Slot 5



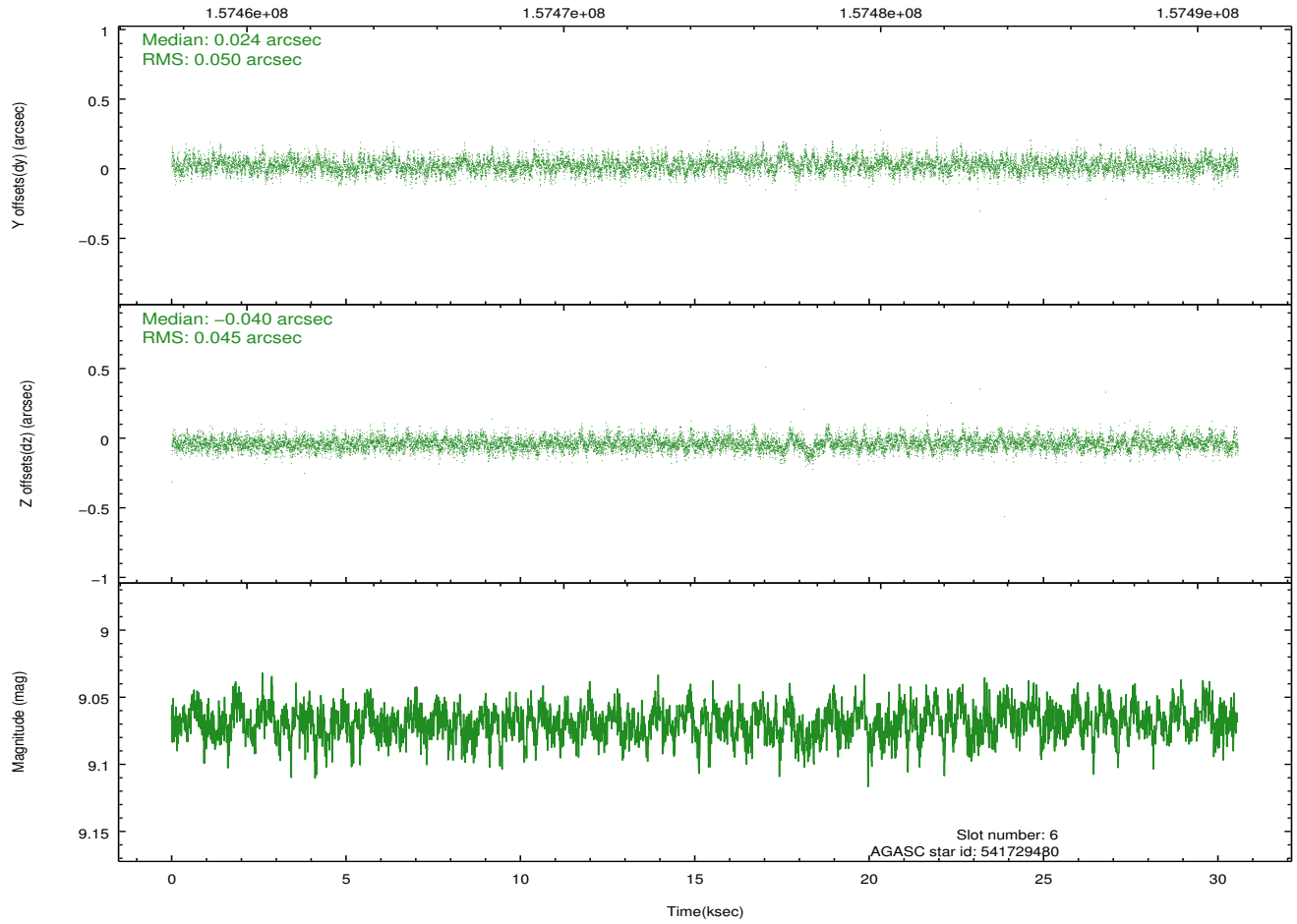
Time (s)



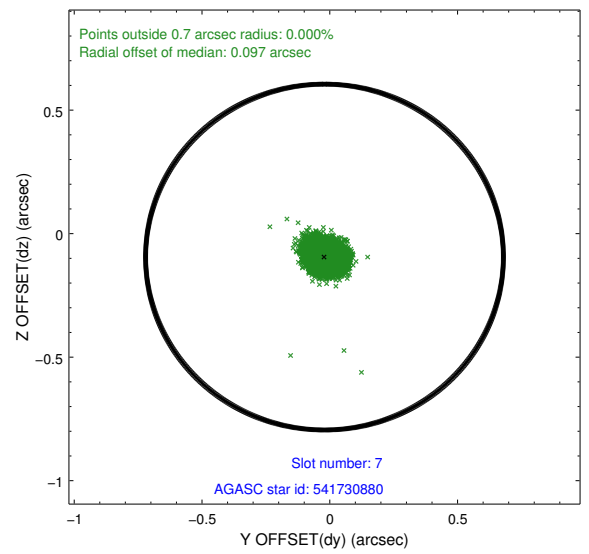
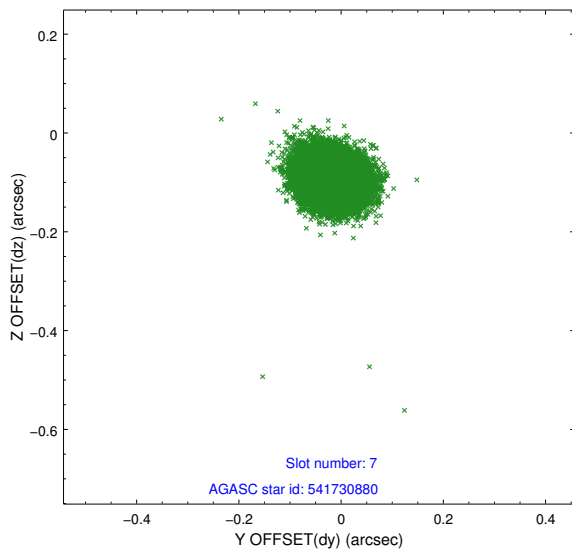
2.4.4 Slot 6



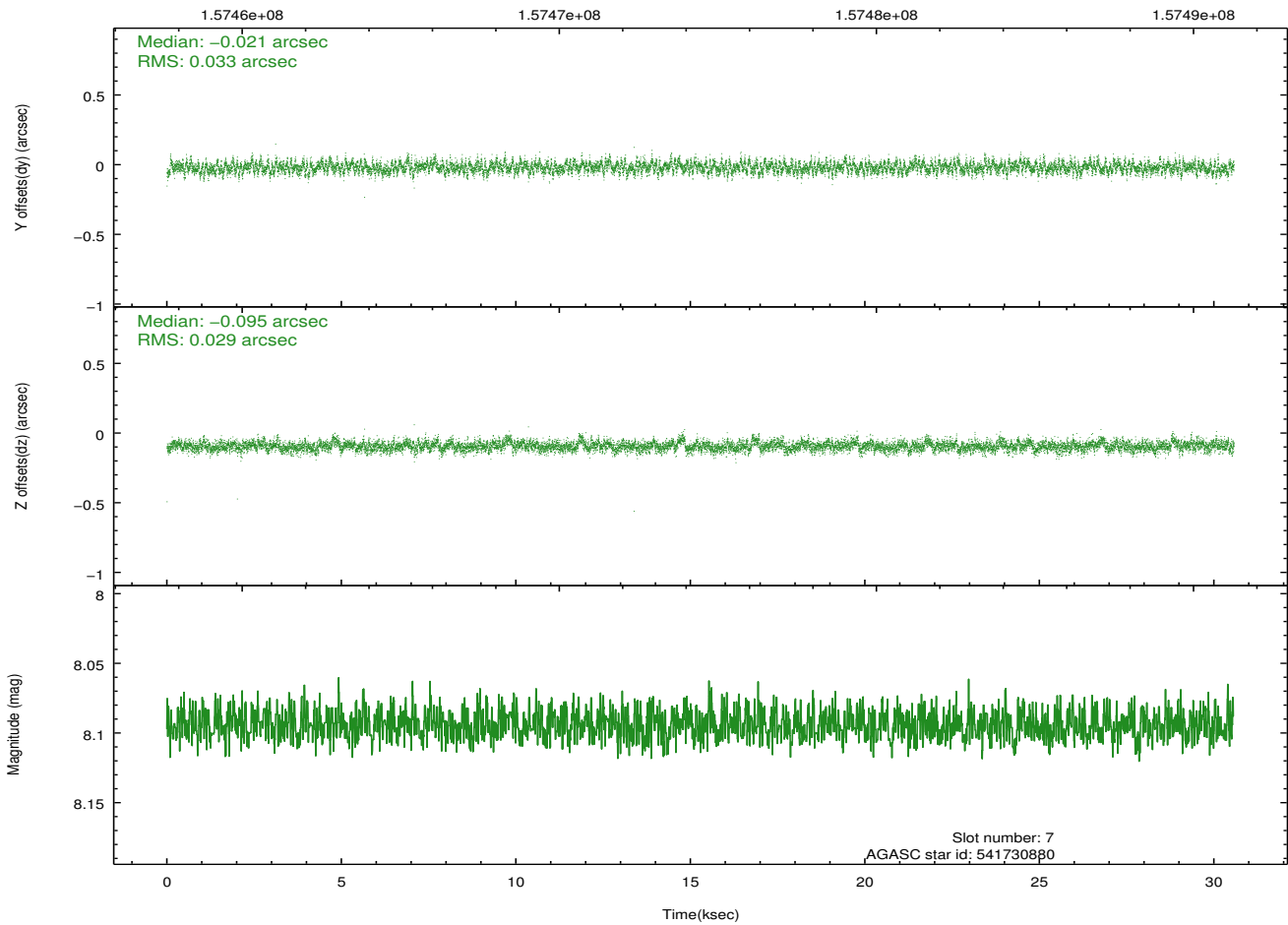
Time (s)



2.4.5 Slot 7

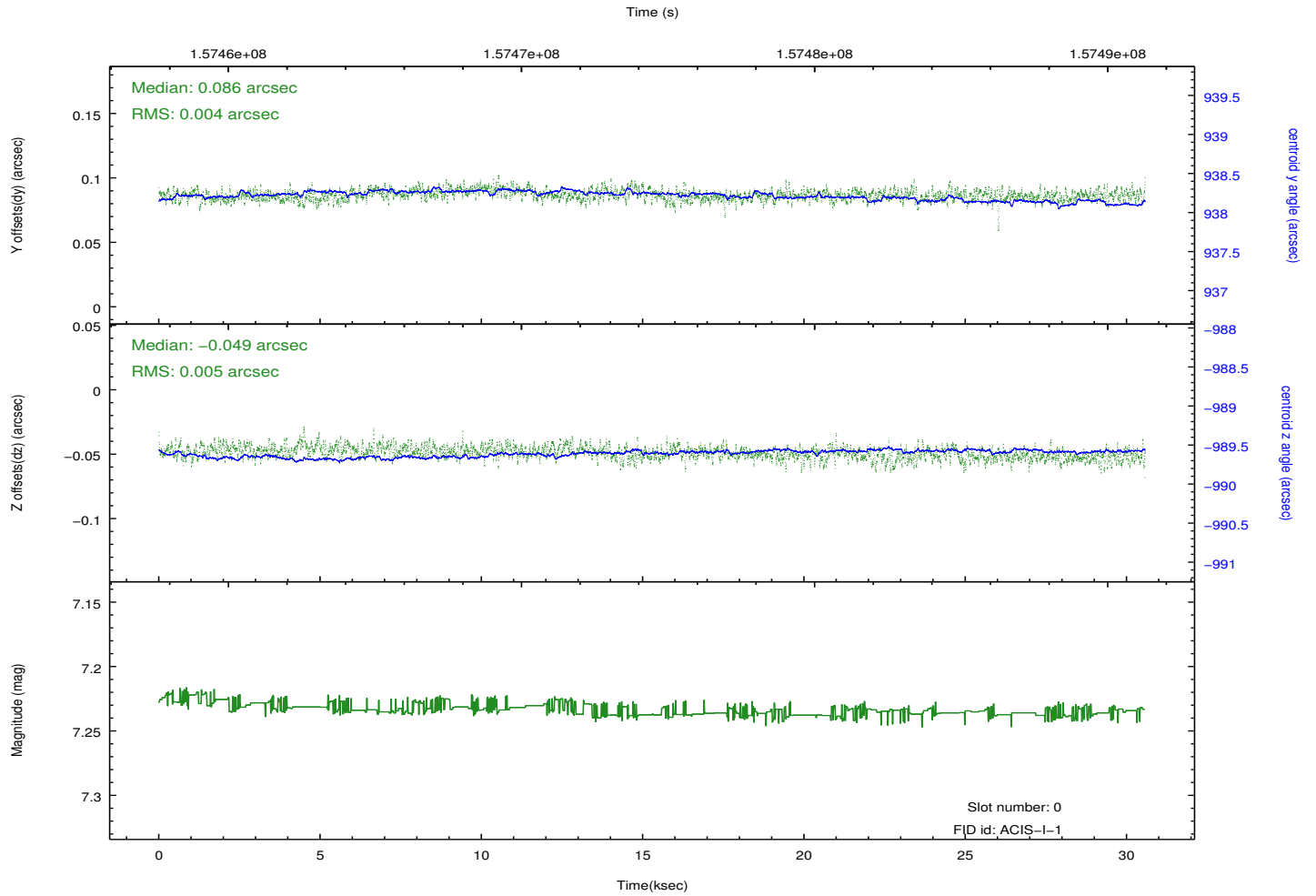
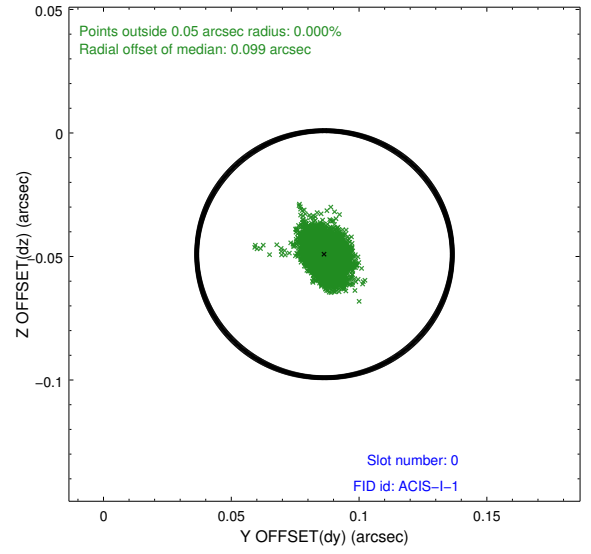
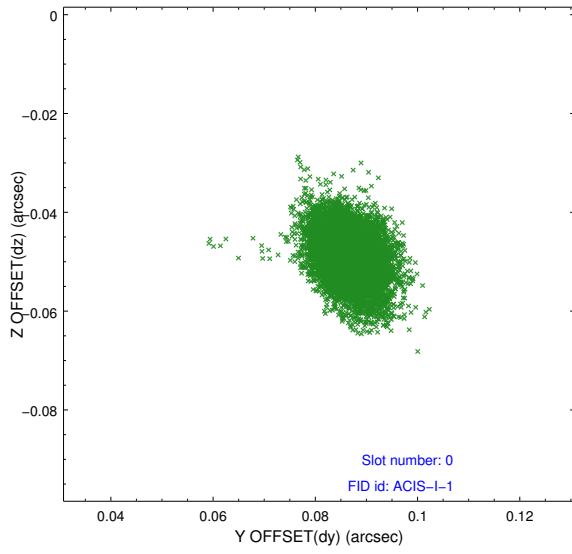


Time (s)

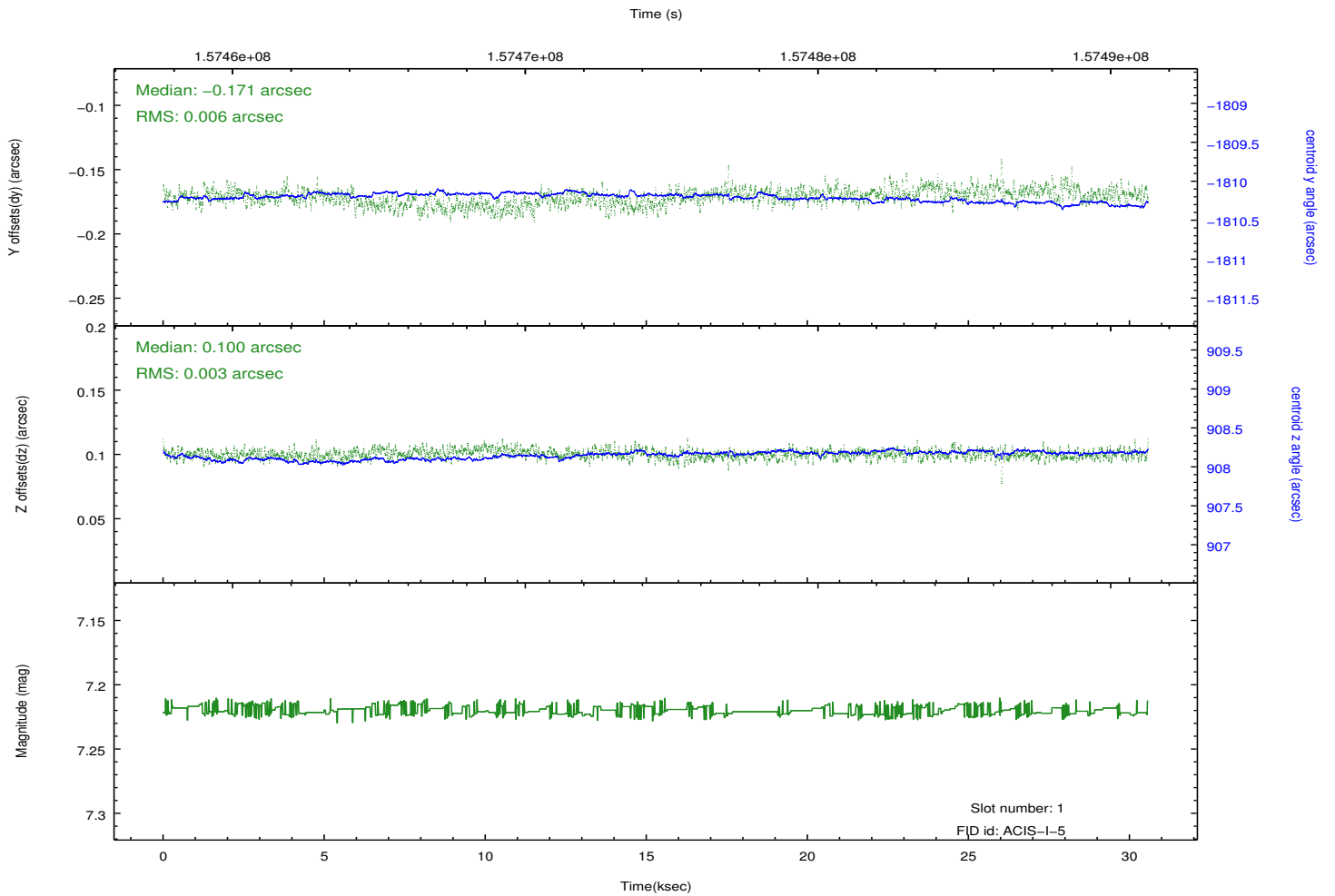
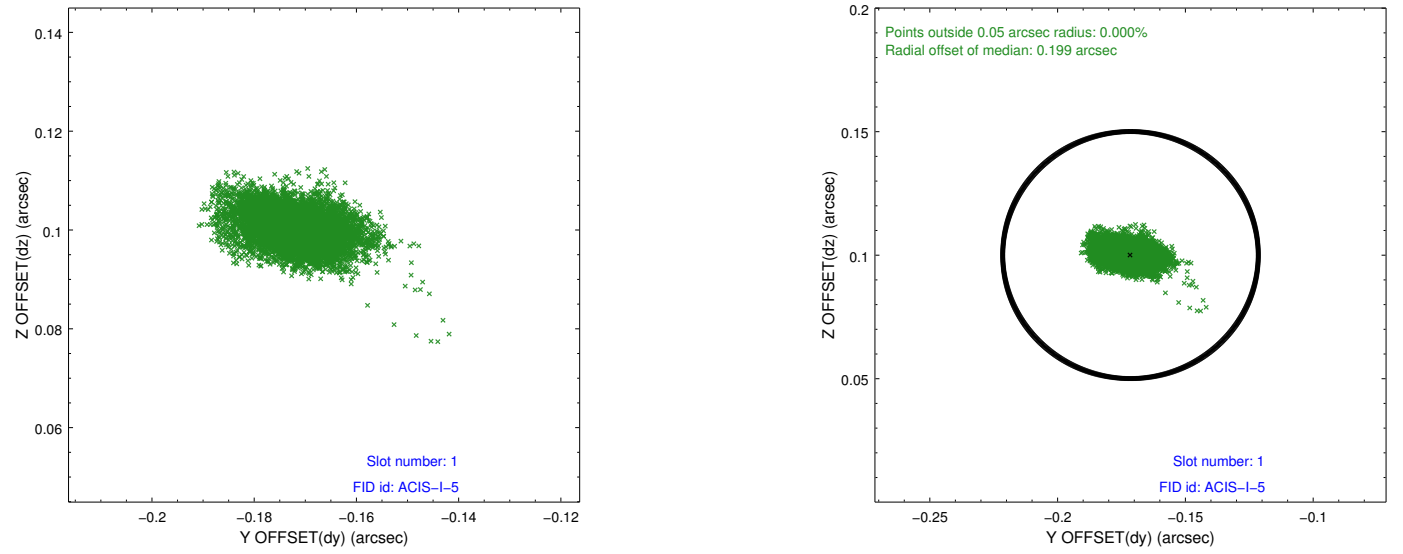


2.5 FID Slots

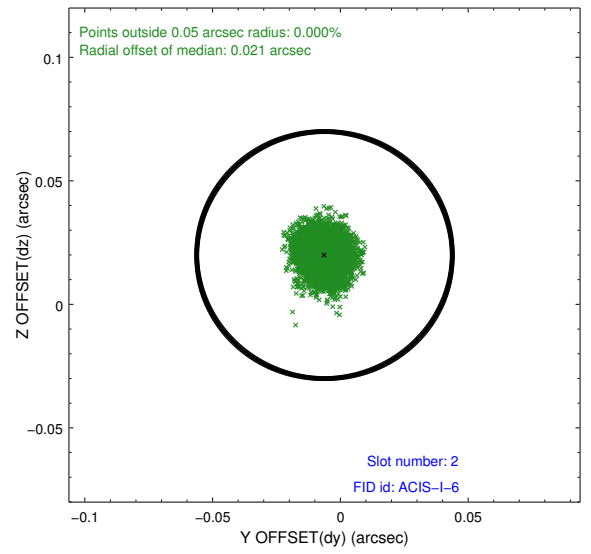
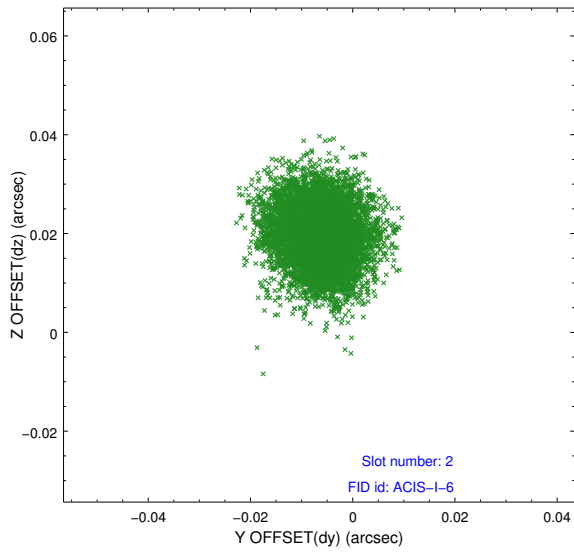
2.5.1 Slot 0



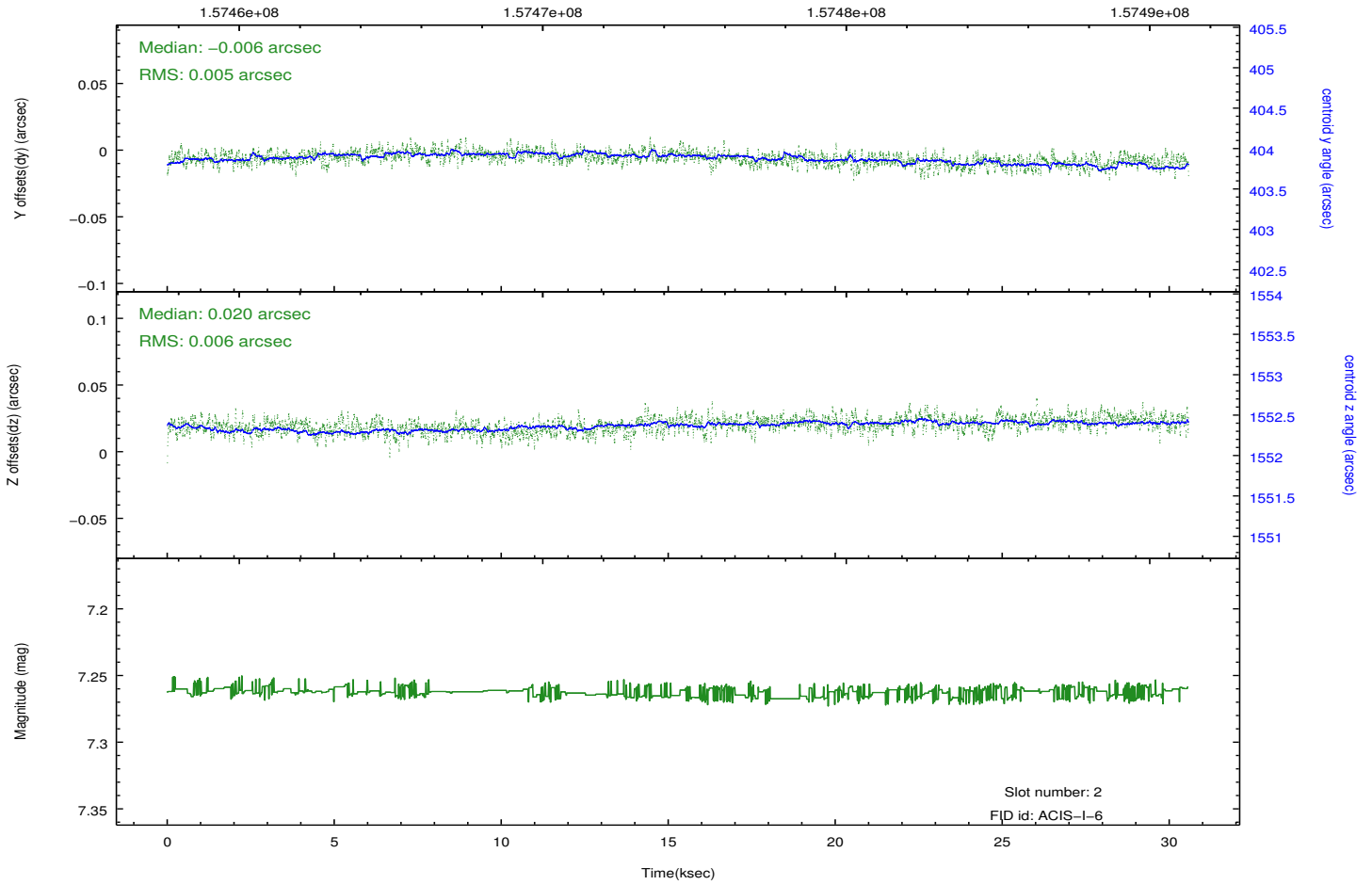
2.5.2 Slot 1



2.5.3 Slot 2



Time (s)



A Summary

A.1 Status

V&V Scientist	Jen Lauer
V&V Date (YYYY-MM-DD)	2012.10.31
V&V Edition	1
V&V Disposition and Status	OK
V&V Charge Time	30.119

A.2 Comments