

V&V Reference Report

L2 ASCDS Version : 8.4.5

Observation 3676 - L2 Version 3
Chandra X-Ray Center

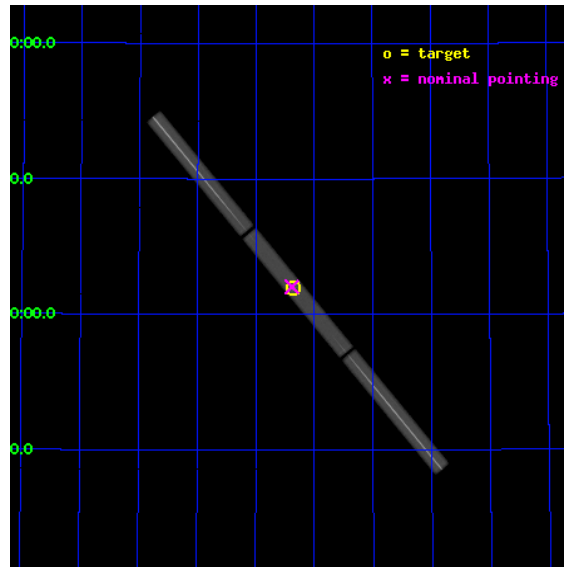
L2 Processing Date : Oct 18 2012

Contents

1	Front	2
2	OBI	3
2.1	OBI	3
2.1.1	Images	3
2.1.2	Parameters	4
2.1.3	Events	4
2.2	Compared Parameters	5
2.3	Aspect	6
2.4	Star Slots	9
2.4.1	Slot 3	9
2.4.2	Slot 4	10
2.4.3	Slot 5	11
2.4.4	Slot 6	12
2.4.5	Slot 7	13
2.5	FID Slots	14
2.5.1	Slot 0	14
2.5.2	Slot 1	15
2.5.3	Slot 2	16
3	Gratings	17
3.1	LETG Arm	17
A	Summary	19
A.1	Status	19
A.2	Comments	19

1 Front

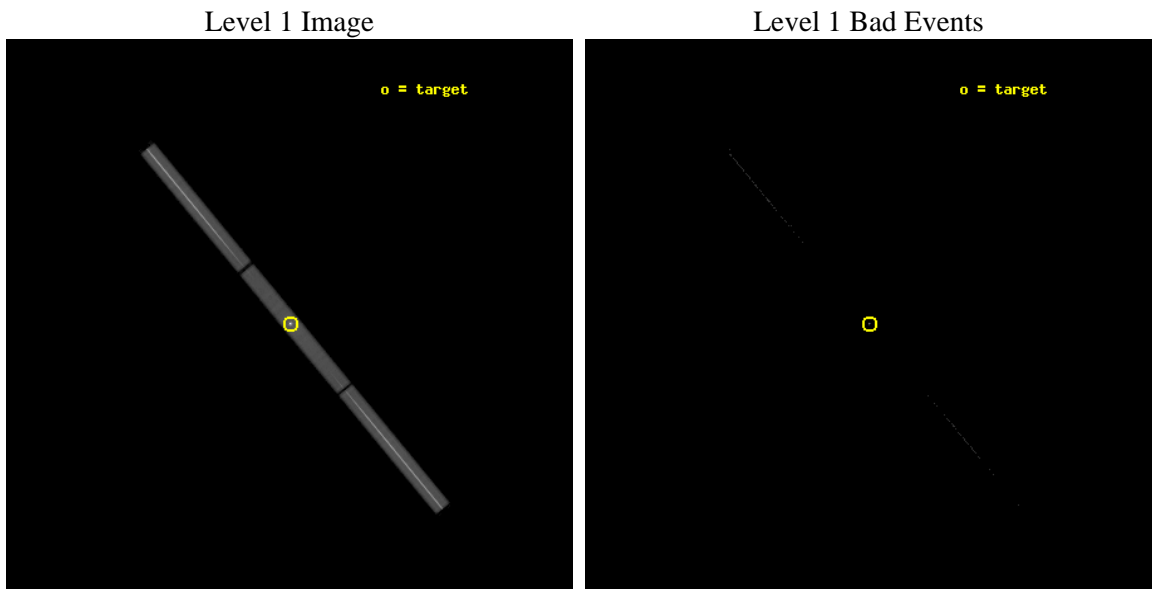
seq_num	290230	Sequence number
obs_id	3676	Observation id
title	AO4 CALIBRATION OBSERVATIONS OF HZ43	Proposal title
observer	Dr. CXC Calibration	Principal investigator
object	HZ43	Source name
ra_targ	199.092083	Observer's specified target RA [deg]
dec_targ	29.099	Observer's specified target Dec [deg]
ra_nom	199.09555658536	Nominal RA [deg]
dec_nom	29.102472197704	Nominal Dec [deg]
roll_nom	50.228876877305	Nominal Roll [deg]
revision	3	Processing version of data
ontime	19981.350833476	[s]
livetime	19804.663001246	Ontime multiplied by DTCOR
l2events	1748006	Number of level 2 events



2 OBI

2.1 OBI

2.1.1 Images



2.1.2 Parameters

obi_num	0	Obi number	sched_exp_time	20000.000000	[s] Scheduled observation exposure time
ascdsver	8.4.5	Processing system revision	ontime	19981.350833476	[s]
caldbver	4.5.2	 	l1events	2134315	Number of level 1 events
date	2012-10-18T14:01:27	Date and time of file creation			
revision	3	Processing version of data			

2.1.3 Events

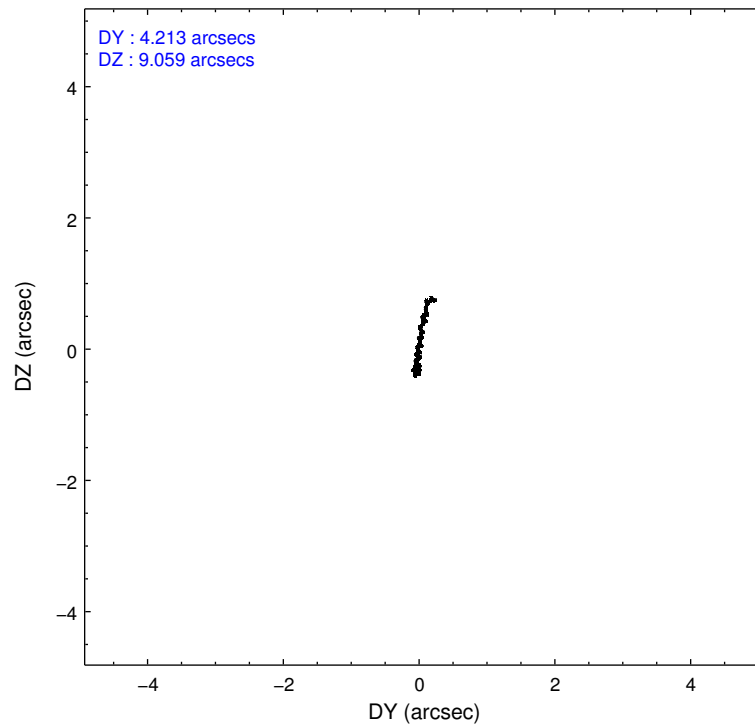
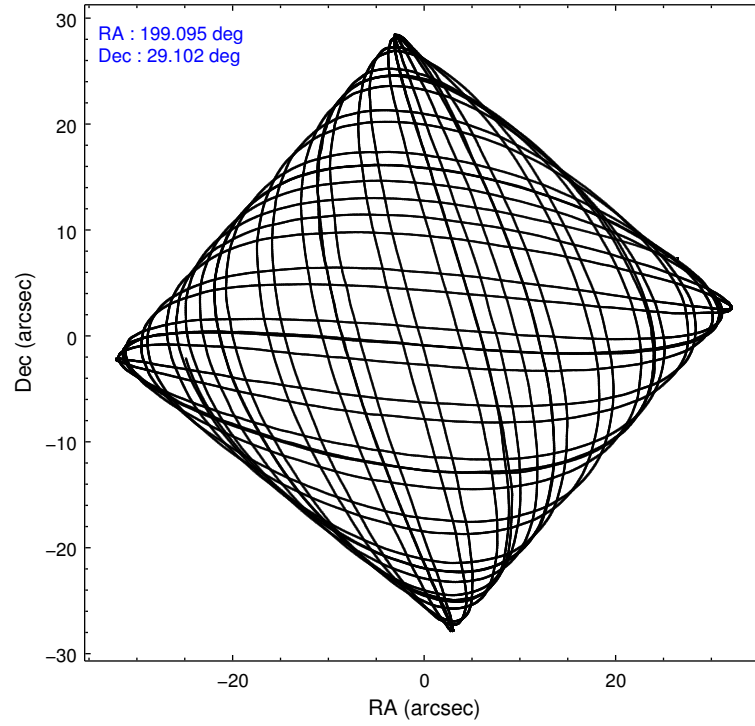
Level 1 Events

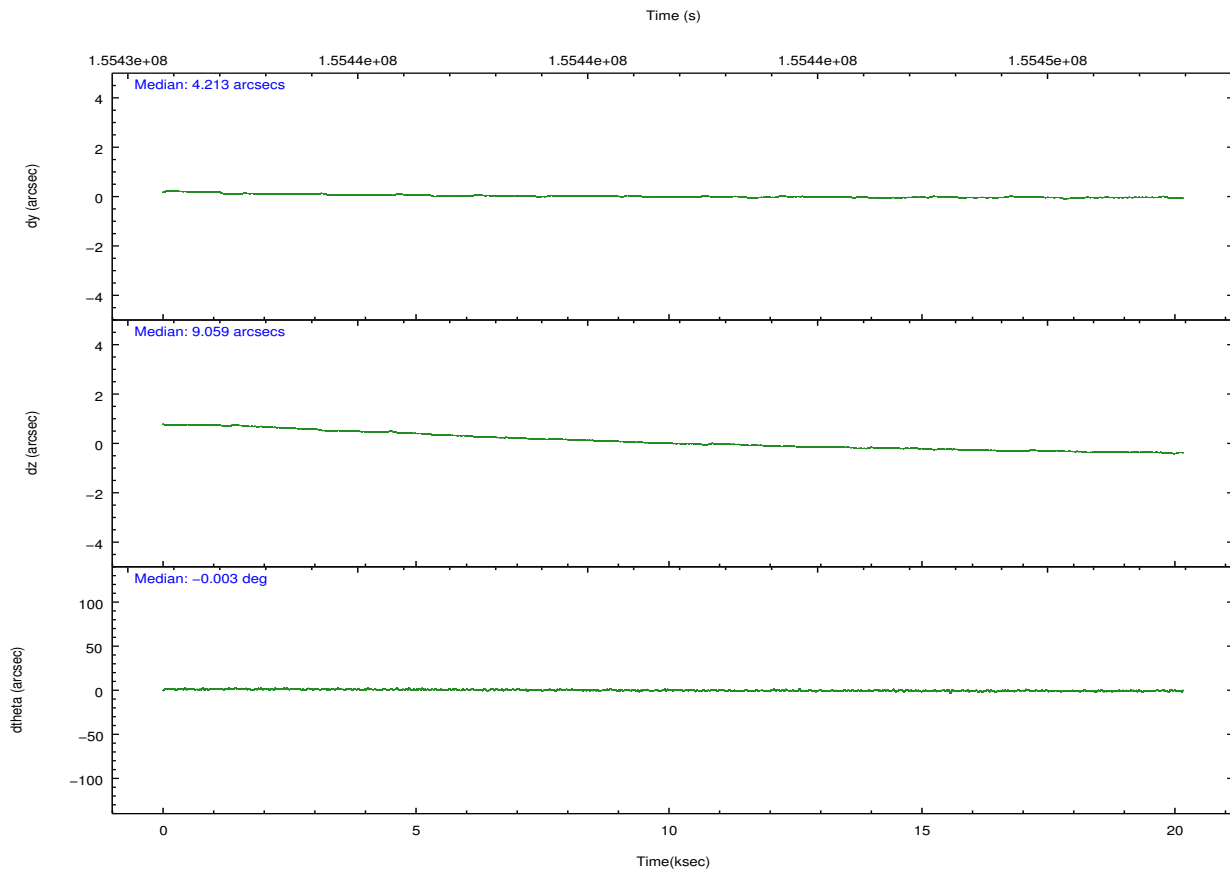
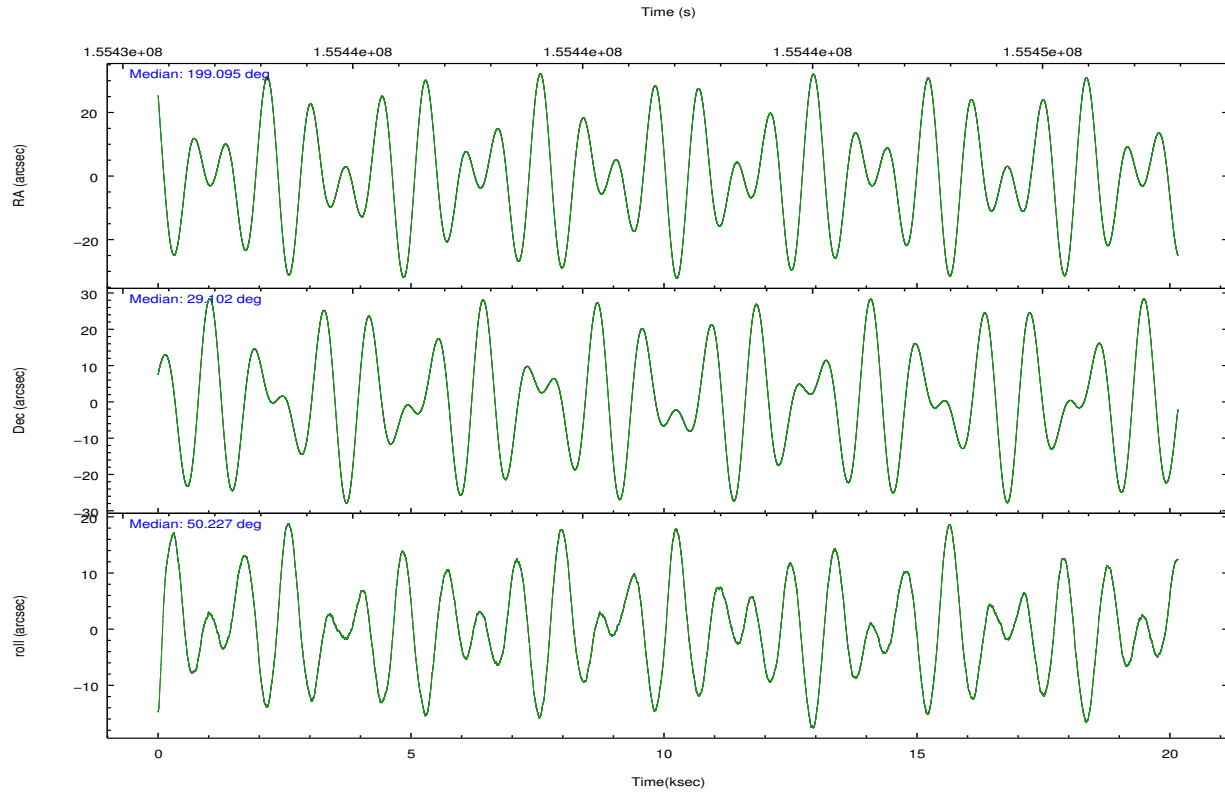
	segment 1	segment 2	segment 3
level 1 events	748561	625587	760167
rejected events	2263	2216	2468
rejected %	0%	0%	0%

2.2 Compared Parameters

Parameter	Planned	Actual	Parameter	Planned	Actual
Instrument	HRC	HRC	Obspar format version number	7	7
Detector	HRC-S	HRC-S	Obspar file type	PREDICTED	ACTUAL
Grating	LETG	LETG	Obspar update status	NONE	UPDATED
Data mode	OBSERVING	OBSERVING			
Observation mode	POINTING	POINTING			
[deg] Pointing RA	199.091672	199.0955565853601			
[deg] Pointing Dec	29.074120	29.10247219770375			
[deg] Pointing Roll	50.163430	50.22887687730461			
[s] Window start time (MET)	155088064.184000	155088064.184000			
[s] Window stop time (MET)	160358464.184000	160358464.184000			
[mm] SIM focus pos	-1.429586	-1.428180813131781			
[mm] SIM defocus	0.1037507710433287	0.1051558262725154			
[mm] SIM translation stage pos	250.455976	250.466033080201			
[mm] SIM translation stage offset	0	-0.01005468664627074			
[s] Observation start time (MET)	155431935.184000	155431447.99482			
Observation start date	2002-12-04T23:31:11	2002-12-04T23:24:07			
[s] Observation end time (MET)	155451935.184000	155452765.4332			
Observation end date	2002-12-05T05:04:31	2002-12-05T05:19:25			

2.3 Aspect



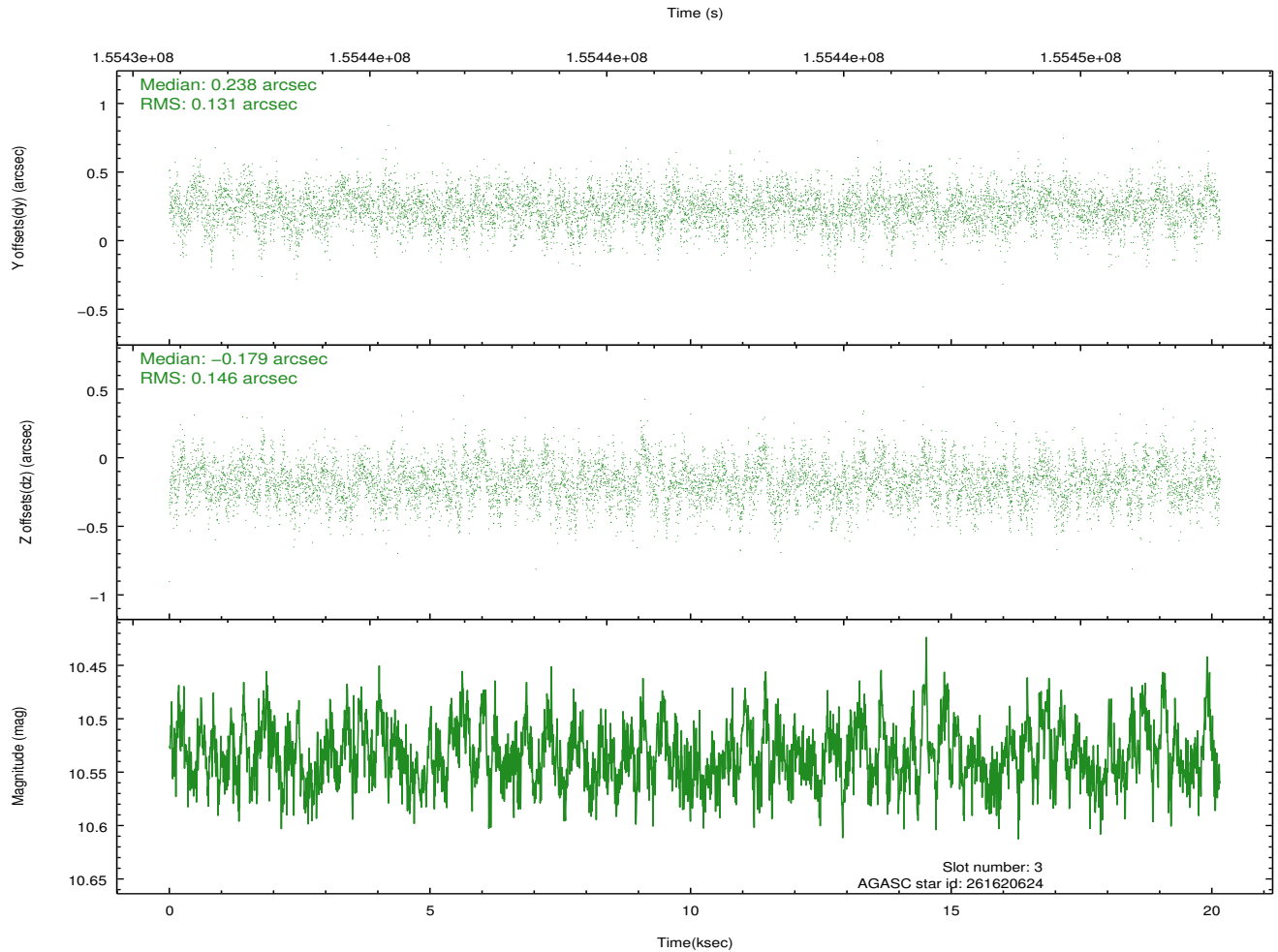
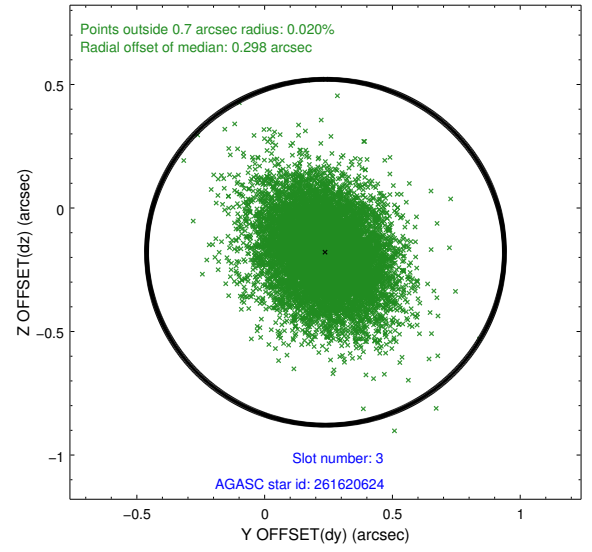
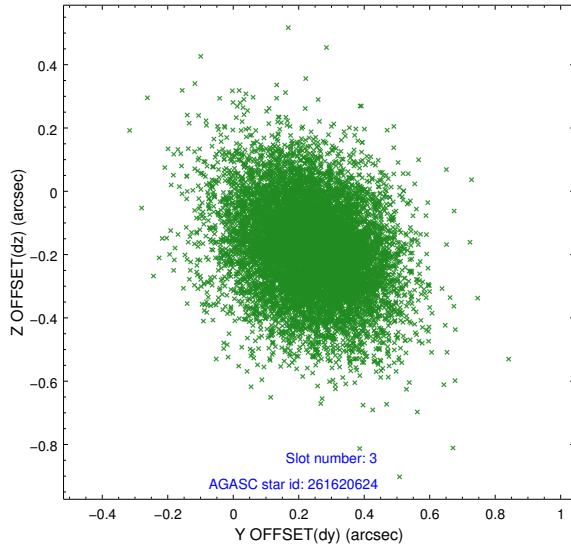


Slot Statistics

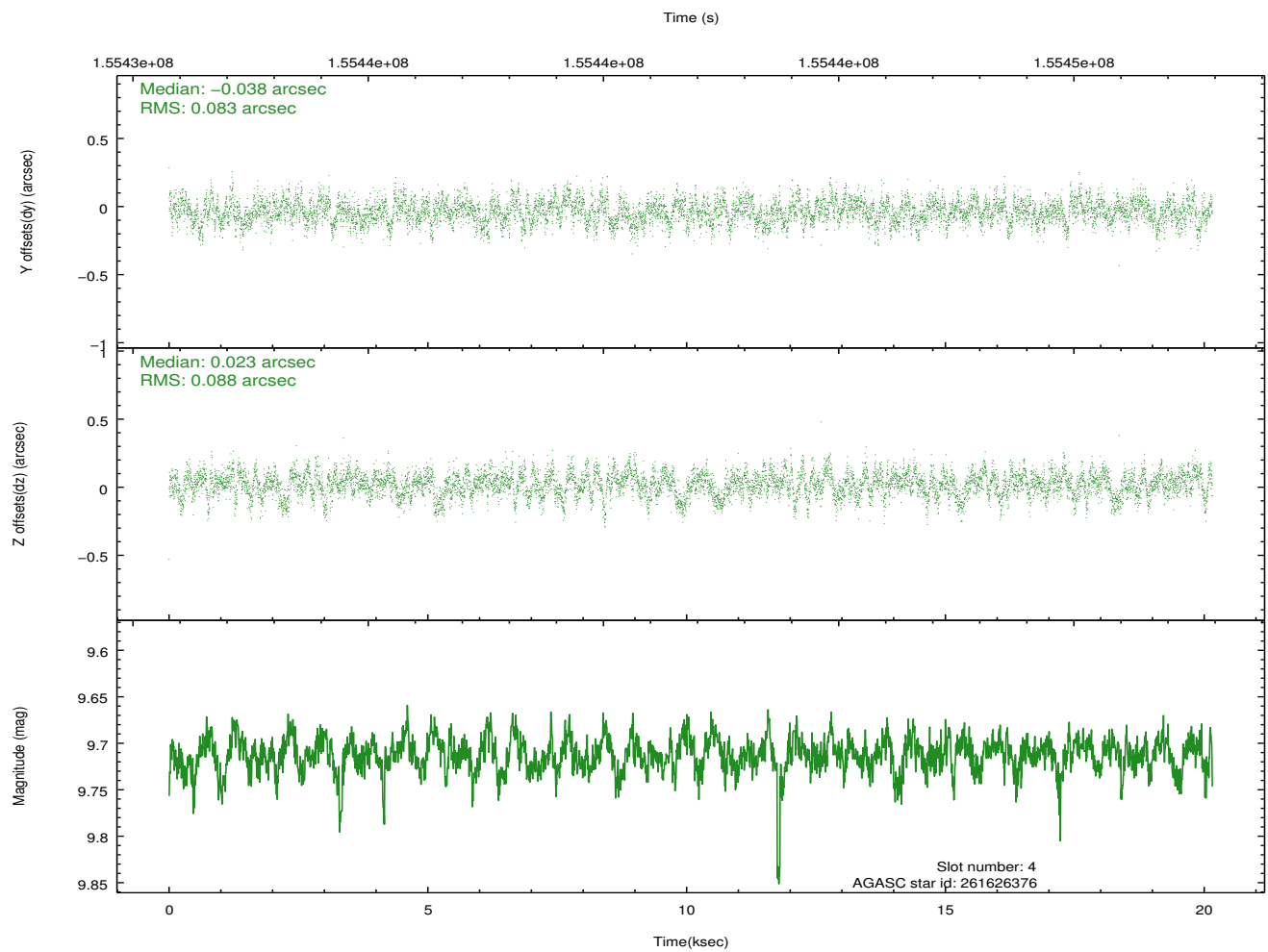
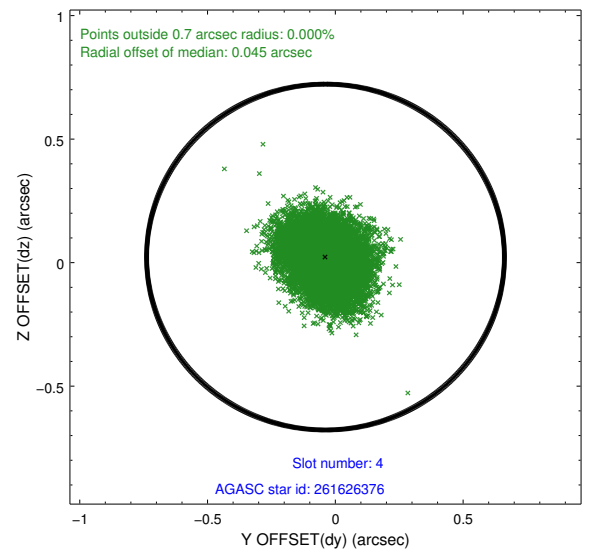
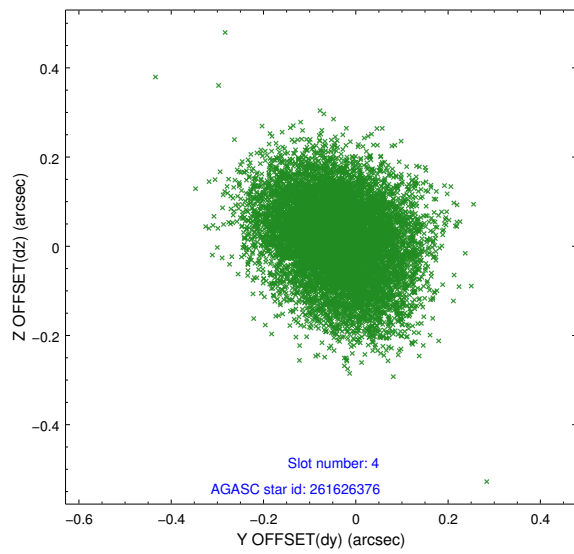
slot	status	id	mag	n_pts	med_dy	med_dz	dr1	dr2	ra	dec	mean_y	mean_z
0	FID	HRC-S-1	7.03	4917	0.170	-0.167	0.018	0.026	0.000000	0.000000	-1158.27	-457.79
1	FID	HRC-S-2	7.02	4917	0.055	-0.085	0.006	0.010	0.000000	0.000000	1241.06	-450.46
2	FID	HRC-S-3	7.04	4917	0.166	-0.050	0.018	0.027	0.000000	0.000000	-1160.73	571.76
3	GUIDE	261620624	10.54	9823	0.238	-0.179	0.206	0.343	198.207504	28.942848	-2138.12	1842.07
4	GUIDE	261626376	9.71	9822	-0.038	0.023	0.129	0.209	198.947288	29.347445	466.20	978.20
5	GUIDE	261629720	8.10	9832	-0.045	0.206	0.063	0.103	199.236176	29.044452	210.54	-417.68
6	GUIDE	261623040	9.13	9833	-0.202	-0.219	0.105	0.169	198.792686	29.757643	1292.60	2293.88
7	GUIDE	261621400	6.97	9833	0.055	0.175	0.068	0.106	198.901600	28.741982	-1300.98	-305.04

2.4 Star Slots

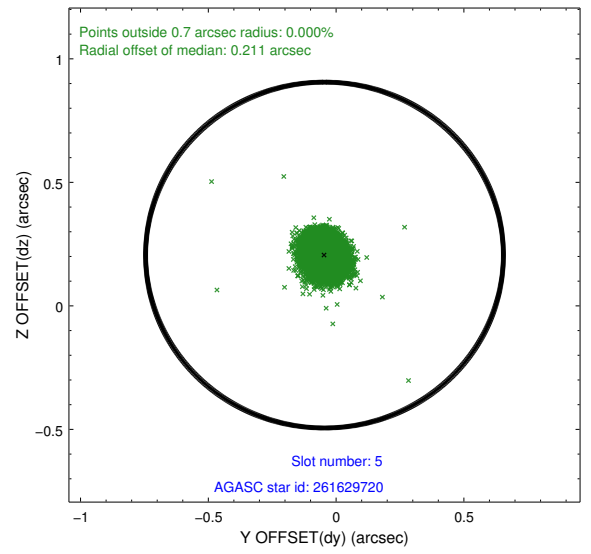
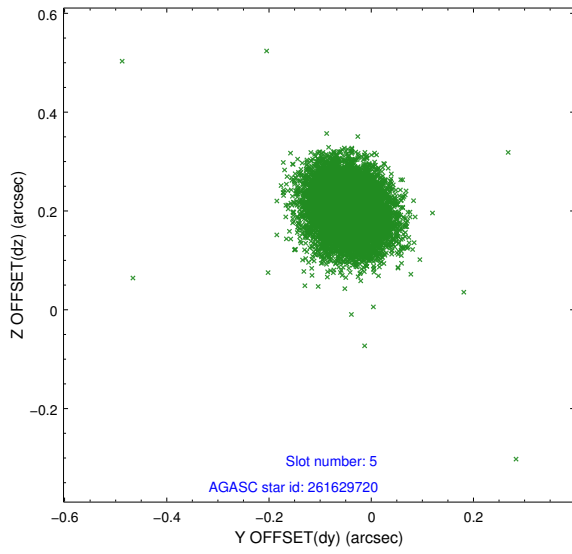
2.4.1 Slot 3



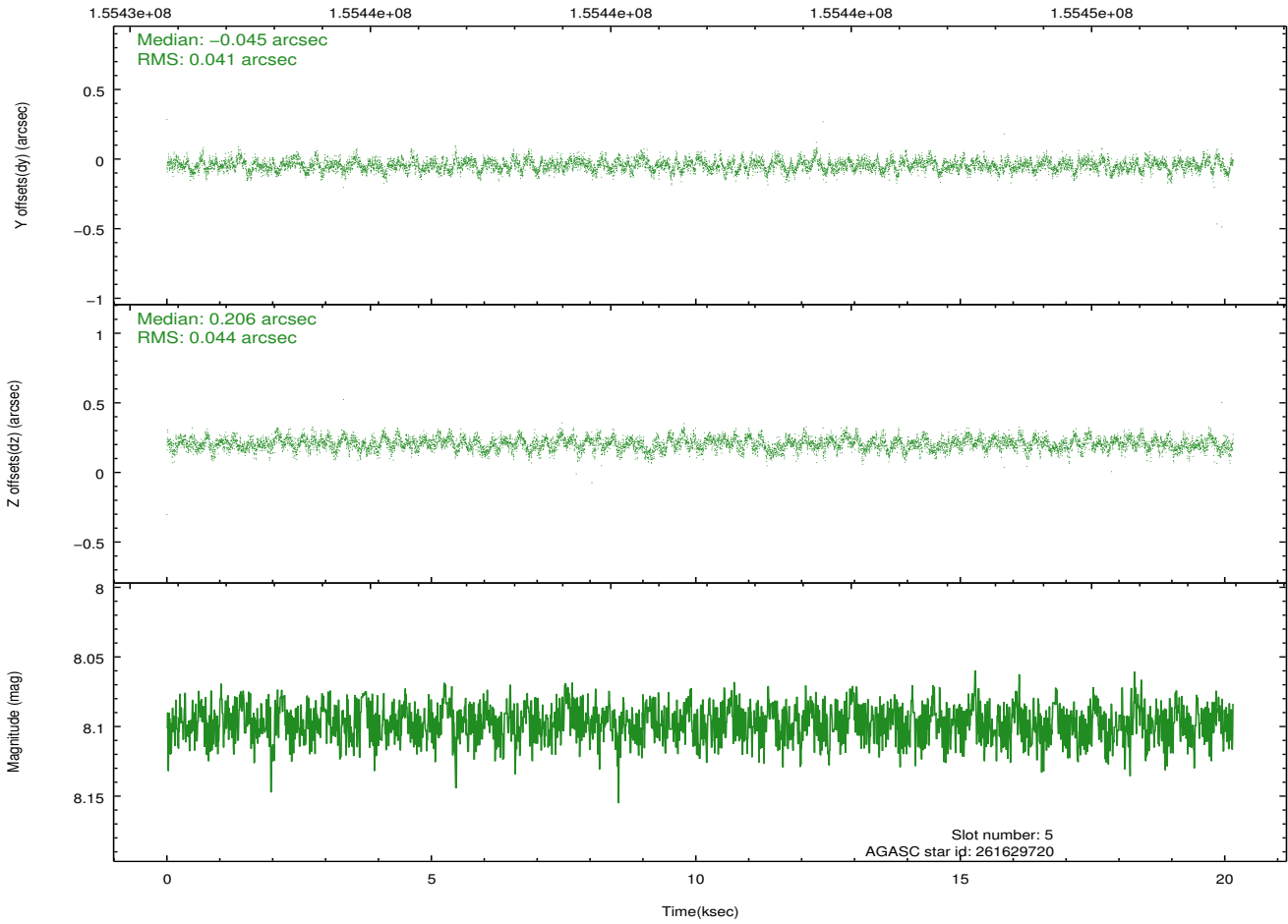
2.4.2 Slot 4



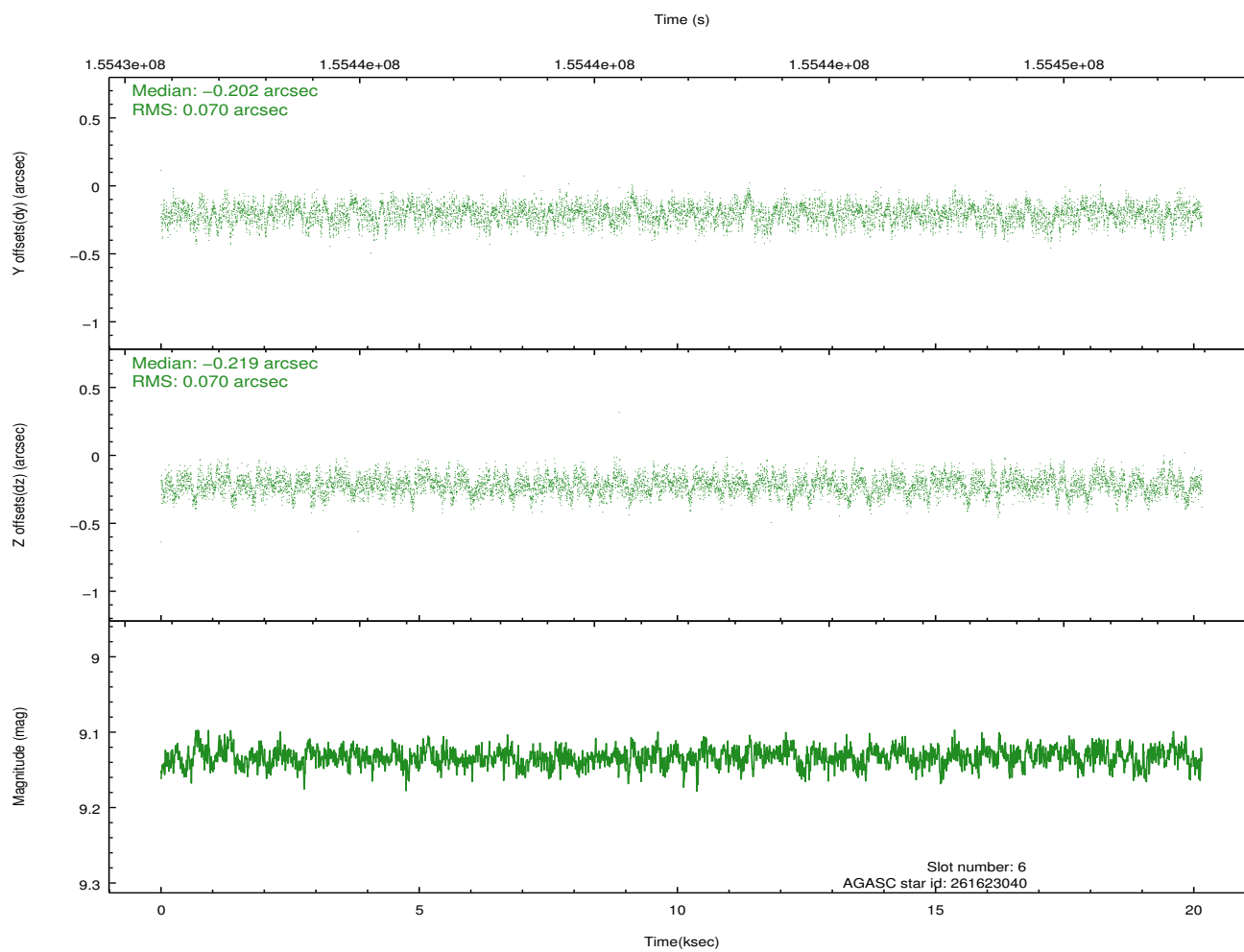
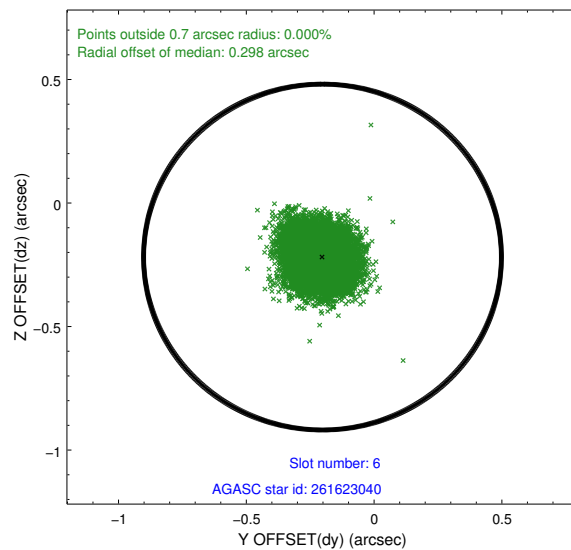
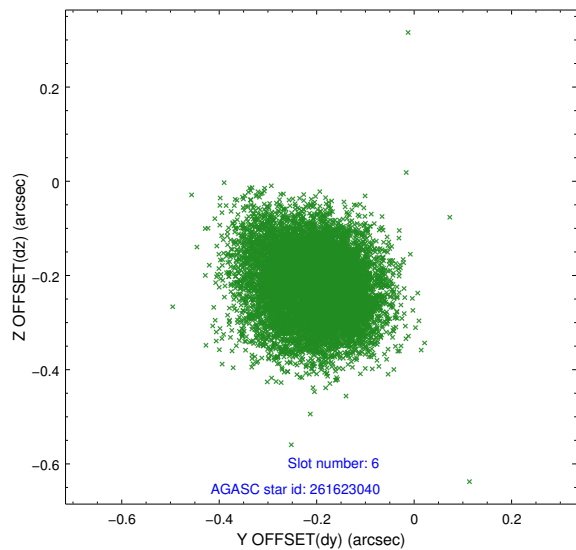
2.4.3 Slot 5



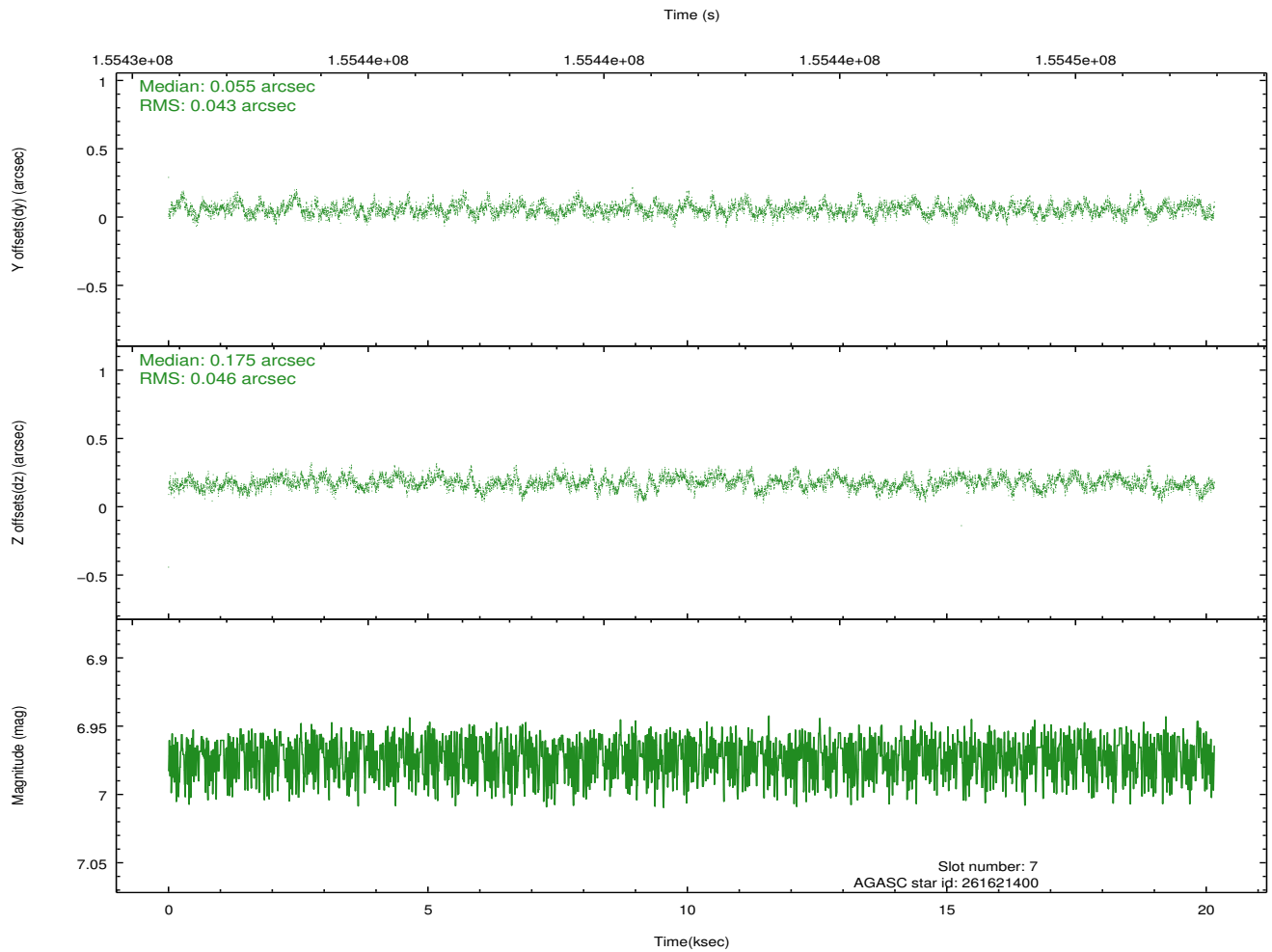
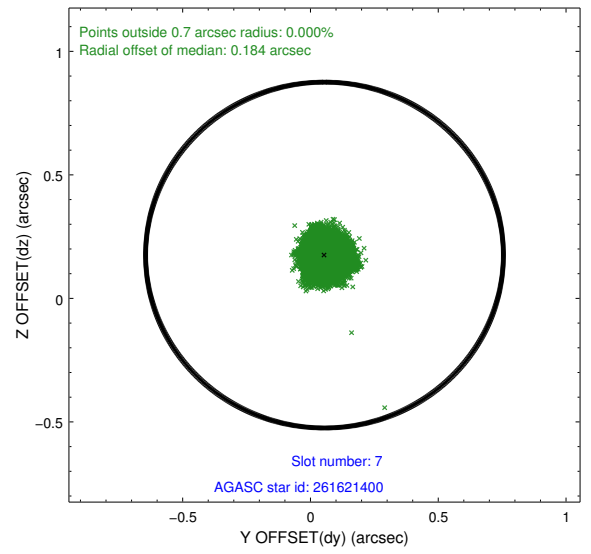
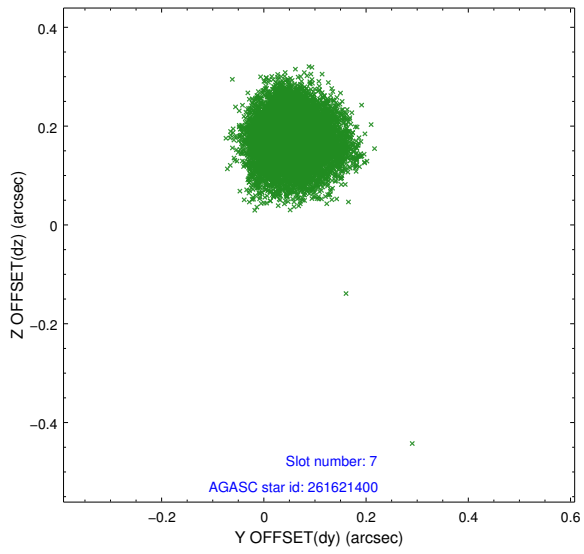
Time (s)



2.4.4 Slot 6

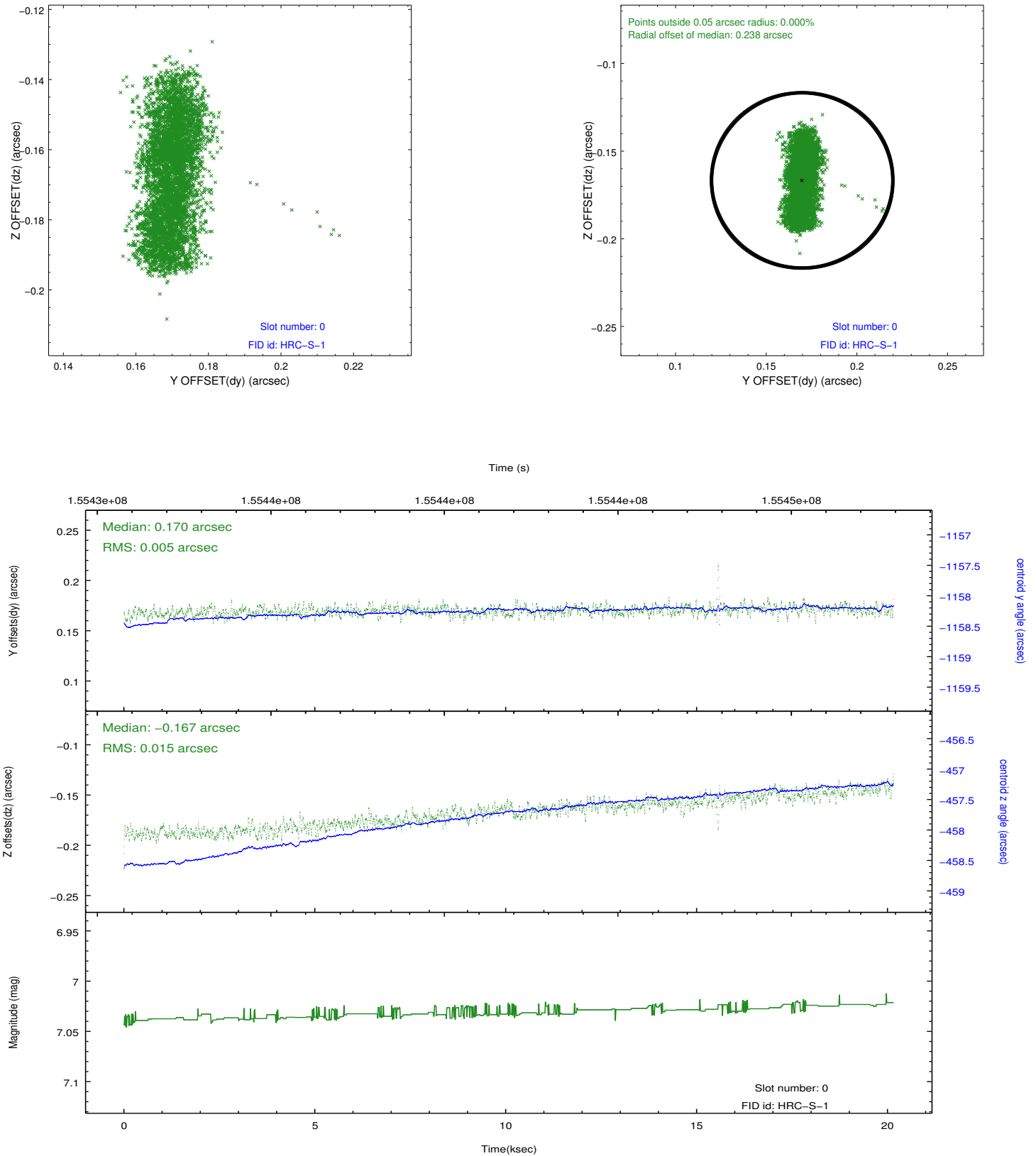


2.4.5 Slot 7

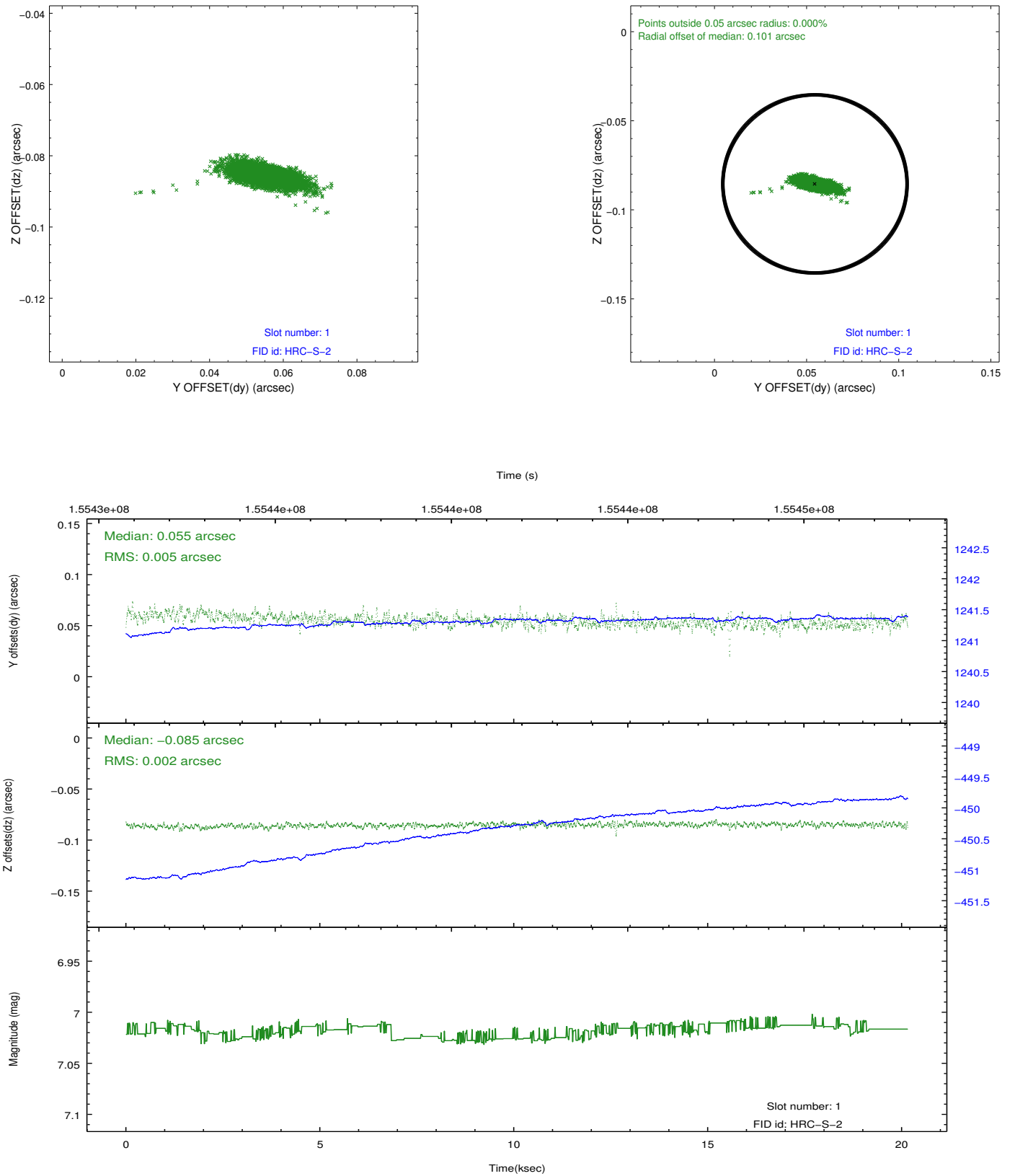


2.5 FID Slots

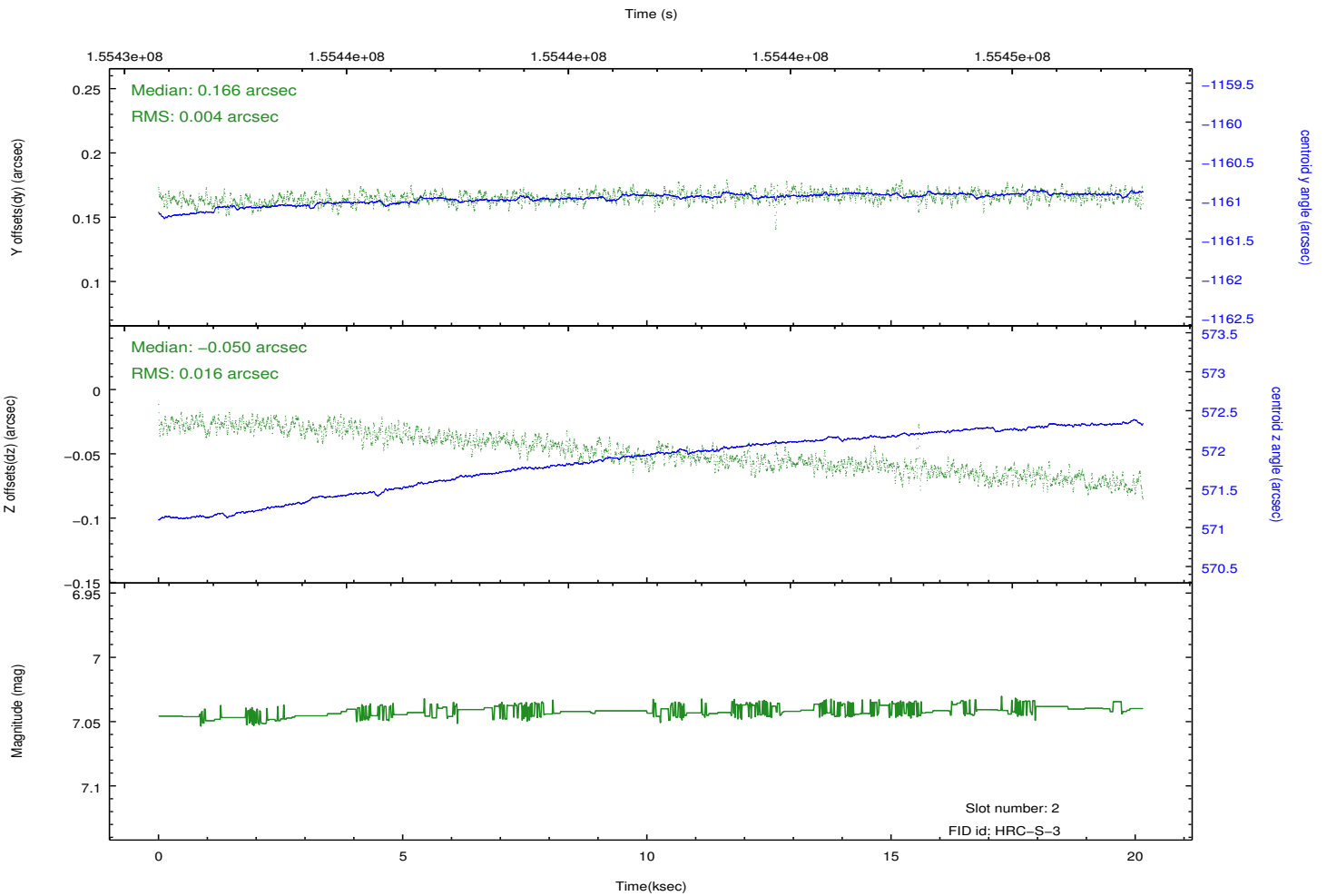
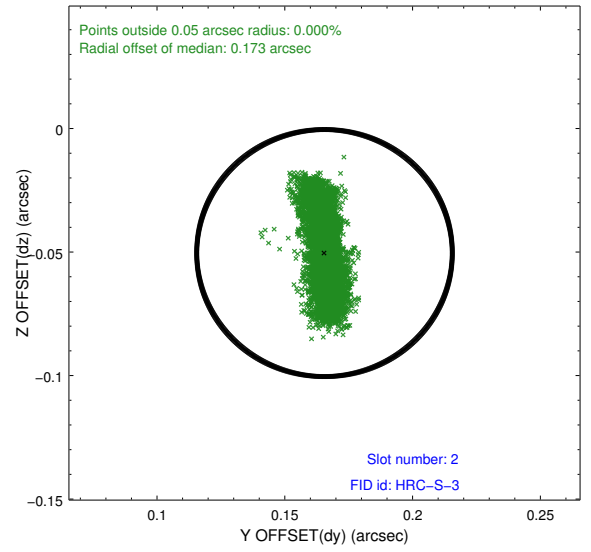
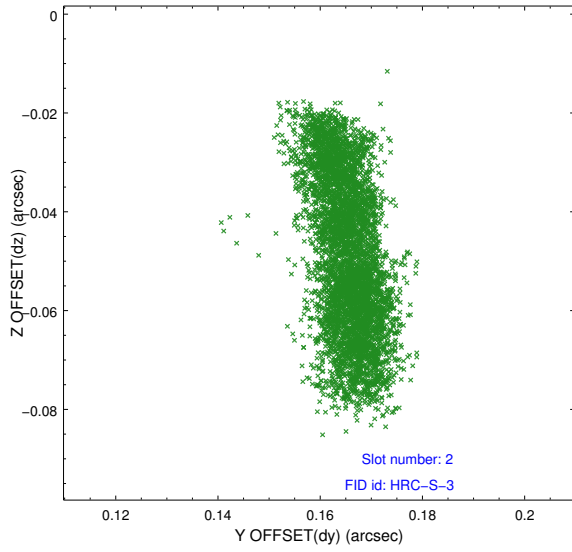
2.5.1 Slot 0



2.5.2 Slot 1

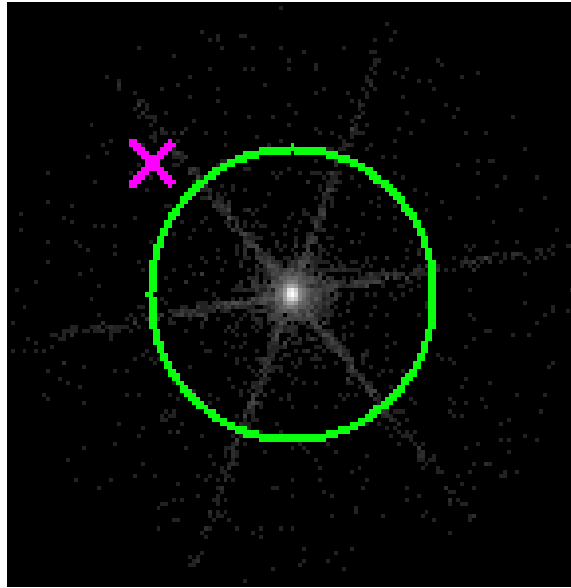


2.5.3 Slot 2

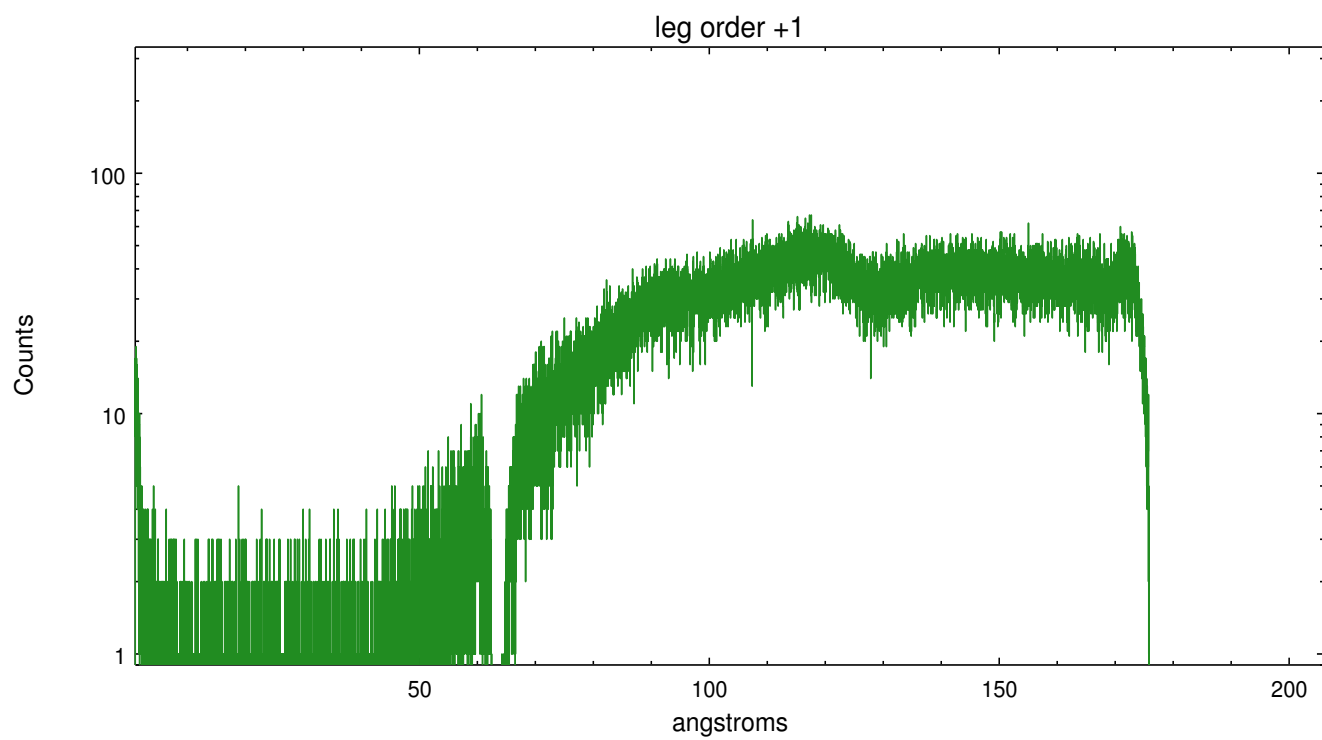
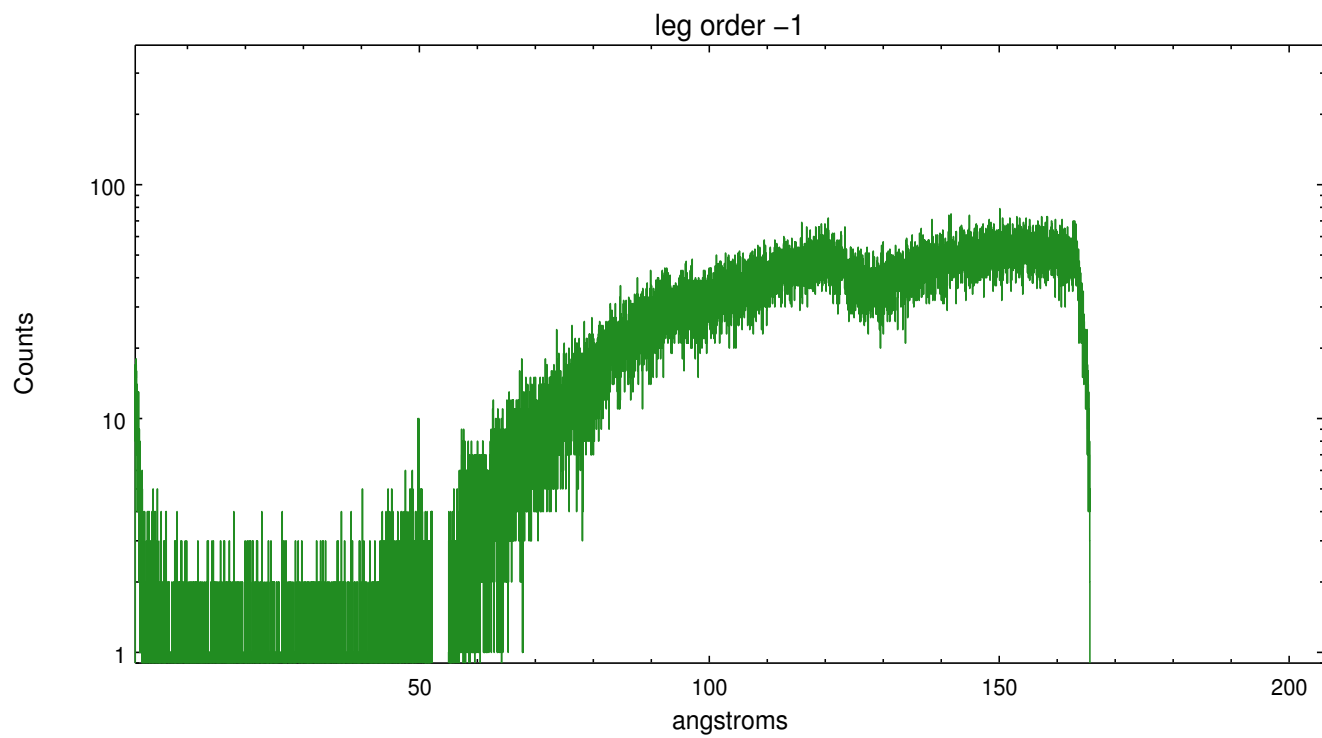


3 Gratings

3.1 LETG Arm



LETG Zero Order



A Summary

A.1 Status

V&V Scientist	Joy Nichols
V&V Date (YYYY-MM-DD)	2012.10.22
V&V Edition	1
V&V Disposition and Status	OK
V&V Charge Time	19.981

A.2 Comments