

V&V Reference Report

L2 ASCDS Version : 8.4.5

Observation 3776 - L2 Version 3
Chandra X-Ray Center

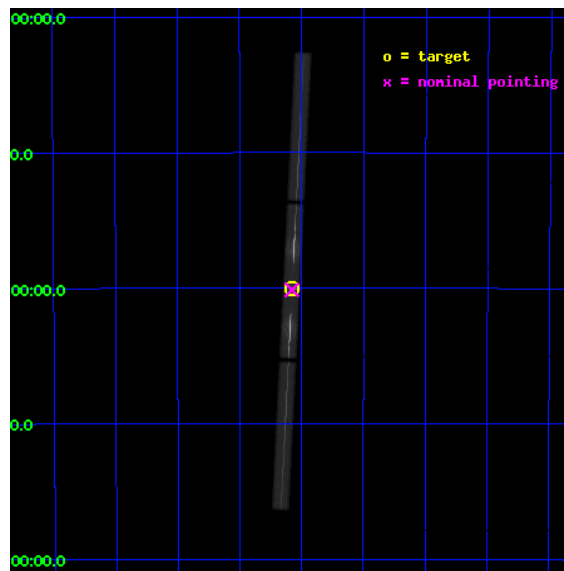
L2 Processing Date : Nov 1 2012

Contents

1	Front	2
2	OBI	3
2.1	OBI	3
2.1.1	Images	3
2.1.2	Parameters	4
2.1.3	Events	4
2.2	Compared Parameters	5
2.3	Aspect	6
2.4	Star Slots	9
2.4.1	Slot 3	9
2.4.2	Slot 4	10
2.4.3	Slot 5	11
2.4.4	Slot 6	12
2.4.5	Slot 7	13
2.5	FID Slots	14
2.5.1	Slot 0	14
2.5.2	Slot 1	15
2.5.3	Slot 2	16
3	Gratings	17
3.1	LETG Arm	17
A	Summary	19
A.1	Status	19
A.2	Comments	19

1 Front

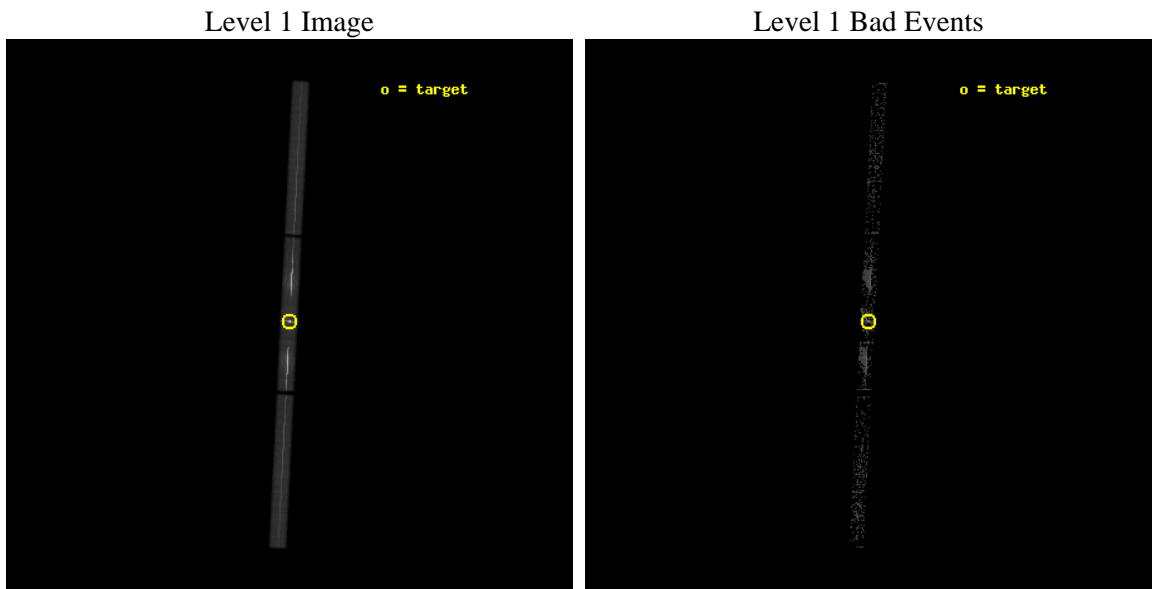
seq_num	300101	Sequence number
obs_id	3776	Observation id
title	MULTIWAVELNGTH TARGET OF OPPORTUNITY OBSERVATIONS OF A BRIGHT NOVA IN OUTBURST	Proposal title
observer	Regents' Professor Sumner Starrfield	Principal investigator
object	V4743 Sgr	Source name
ra_targ	285.289083	Observer's specified target RA [deg]
dec_targ	-22.001639	Observer's specified target Dec [deg]
ra_nom	285.28924472241	Nominal RA [deg]
dec_nom	-22.00638453544	Nominal Dec [deg]
roll_nom	272.81148524829	Nominal Roll [deg]
revision	3	Processing version of data
ontime	11829.781754285	[s]
liveltime	11684.678253766	Ontime multiplied by DTCOR
l2events	1640008	Number of level 2 events



2 OBI

2.1 OBI

2.1.1 Images



2.1.2 Parameters

obi_num	0	Obi number	sched_exp_time	12000.000000	[s] Scheduled observation exposure time
ascdsver	8.4.5	Processing system revision	ontime	11829.781754285	[s]
caldbver	4.5.2	 	l1events	1904239	Number of level 1 events
date	2012-11-01T04:26:07	Date and time of file creation			
revision	3	Processing version of data			

2.1.3 Events

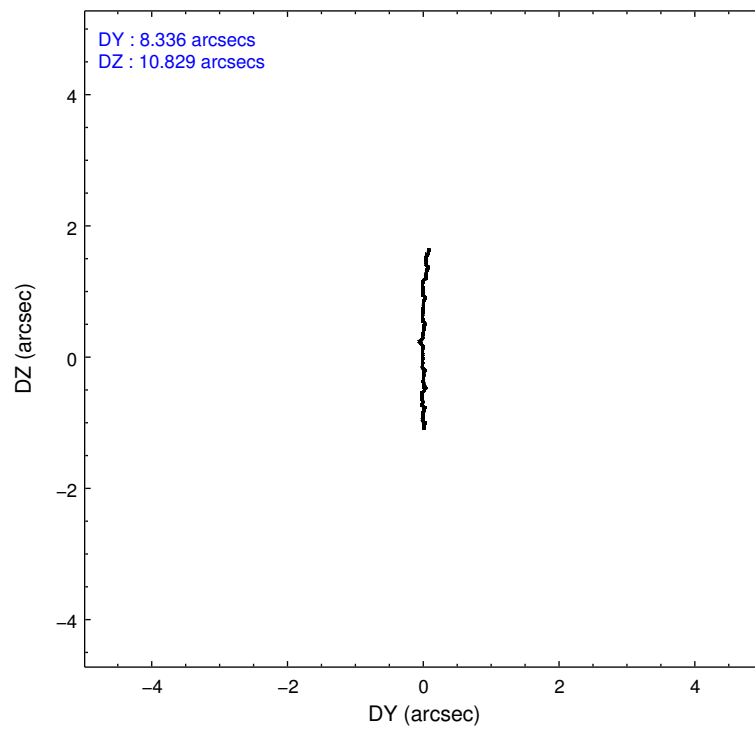
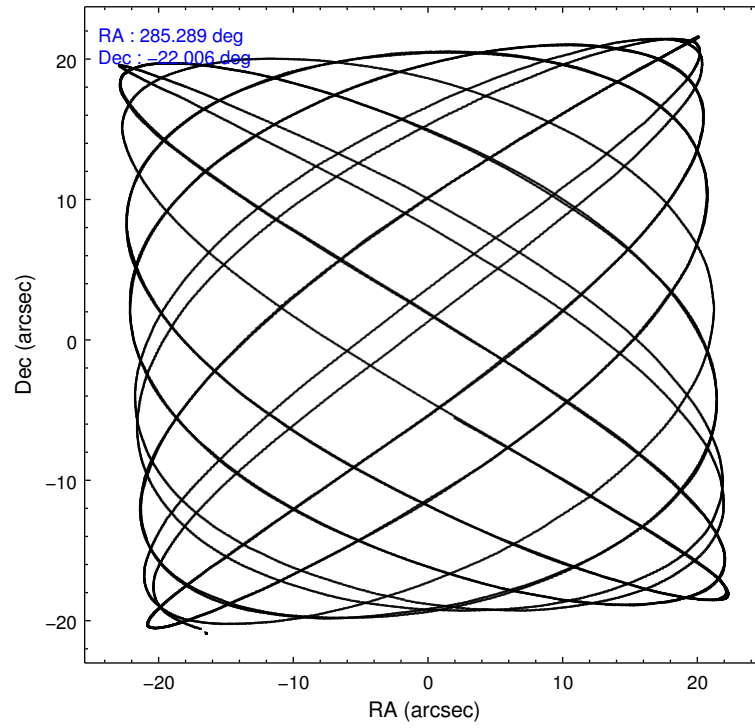
Level 1 Events

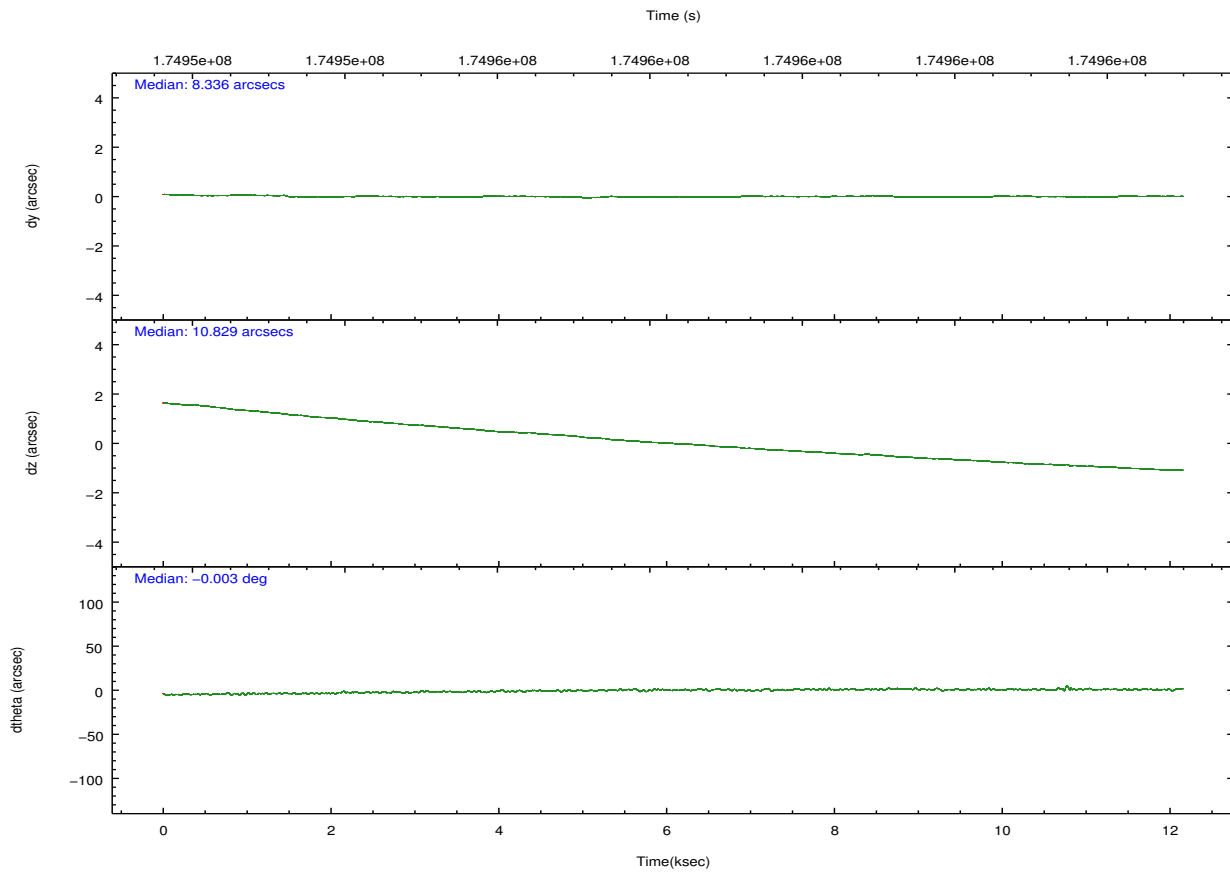
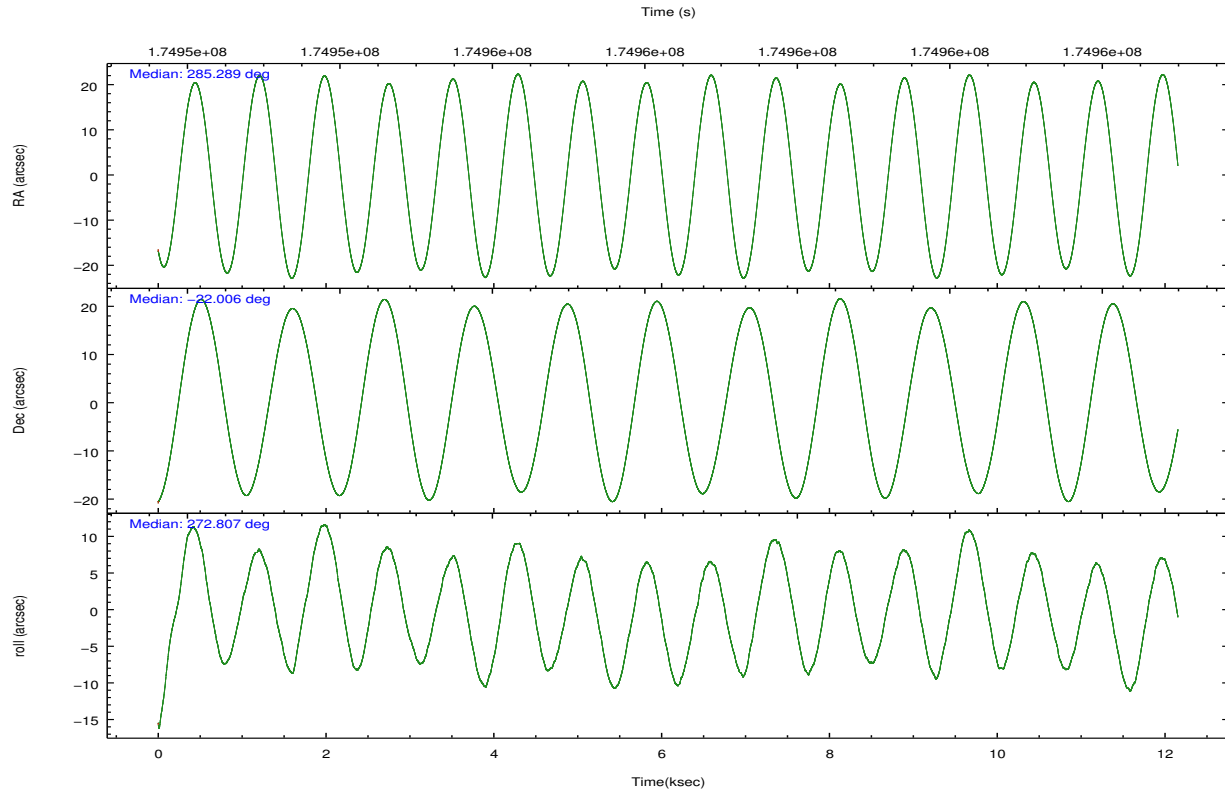
	segment 1	segment 2	segment 3
level 1 events	298457	1303231	302551
rejected events	15173	25662	15560
rejected %	5%	1%	5%

2.2 Compared Parameters

Parameter	Planned	Actual	Parameter	Planned	Actual
Instrument	HRC	HRC	Obspar format version number	7	7
Detector	HRC-S	HRC-S	Obspar file type	PREDICTED	ACTUAL
Grating	LETG	LETG	Obspar update status	NONE	UPDATED
Data mode	OBSERVING	OBSERVING			
Observation mode	POINTING	POINTING			
[deg] Pointing RA	285.271211	285.2892447224115			
[deg] Pointing Dec	-21.983078	-22.00638453543985			
[deg] Pointing Roll	272.737399	272.8114852482882			
[mm] SIM focus pos	-1.429586	-1.428180813131781			
[mm] SIM defocus	0.1037507710433287	0.1051558262725154			
[mm] SIM translation stage pos	250.455976	250.466033080201			
[mm] SIM translation stage offset	0	-0.01005468664627074			
[s] Observation start time (MET)	174952379.184000	174951329.98022			
Observation start date	2003-07-18T21:51:55	2003-07-18T21:35:29			
[s] Observation end time (MET)	174964379.184000	174965076.25581			
Observation end date	2003-07-19T01:11:55	2003-07-19T01:24:36			

2.3 Aspect



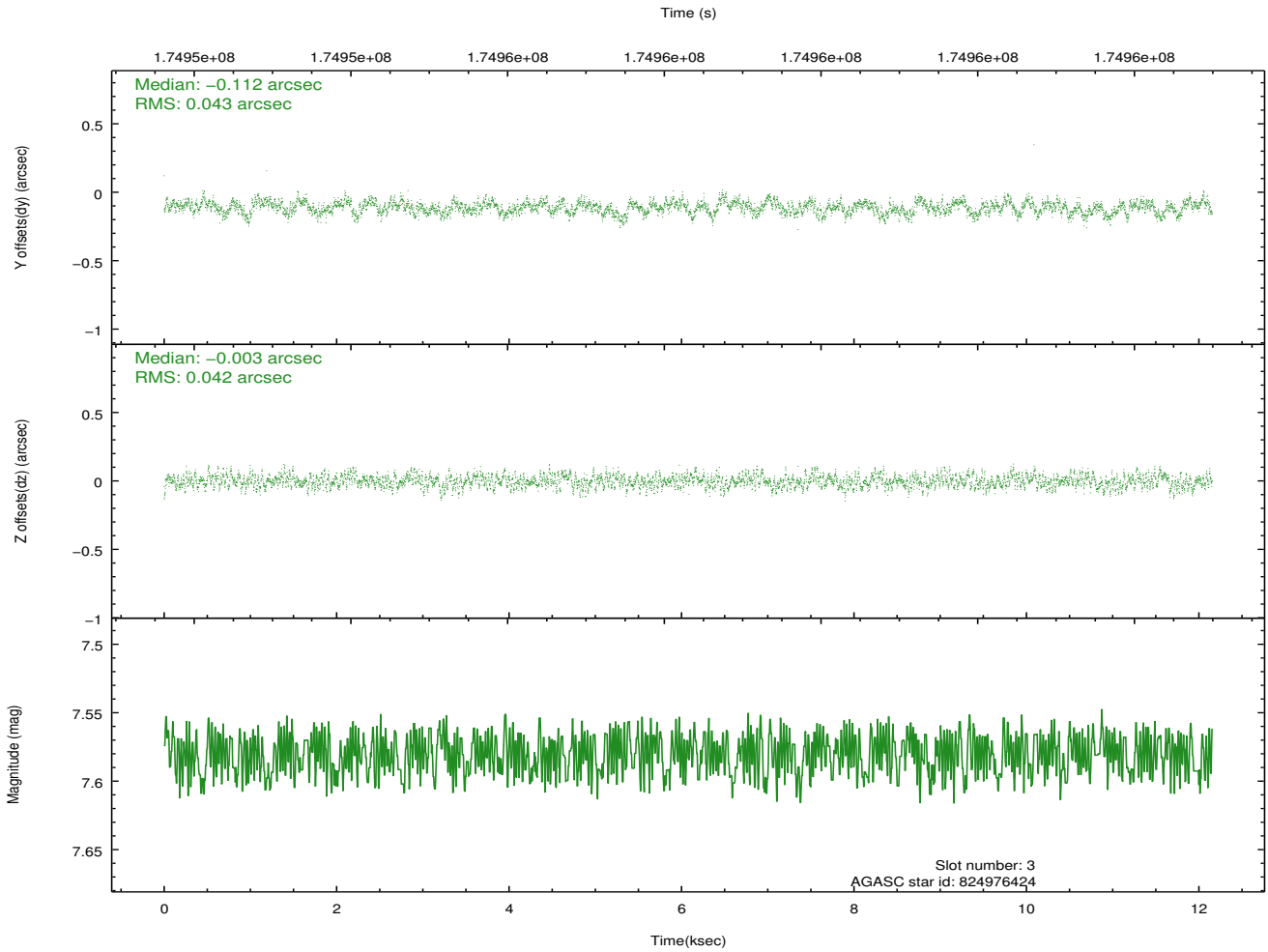
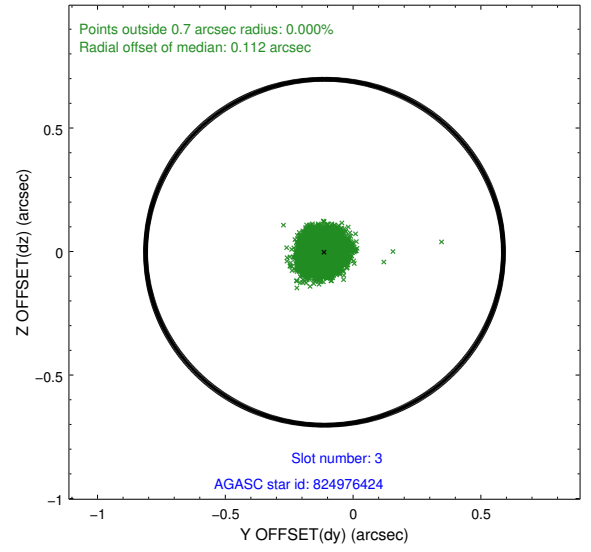
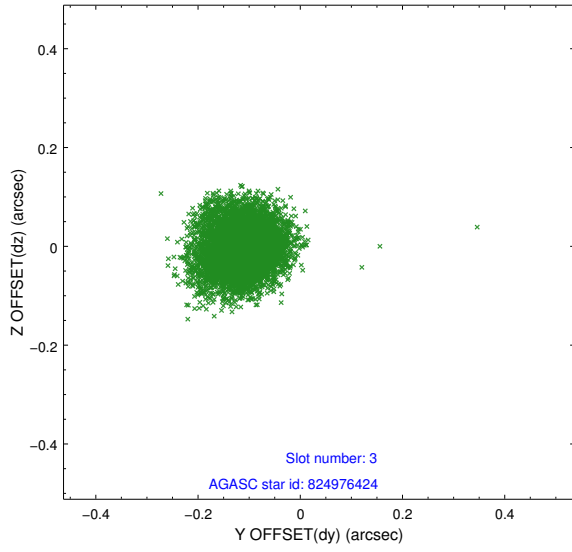


Slot Statistics

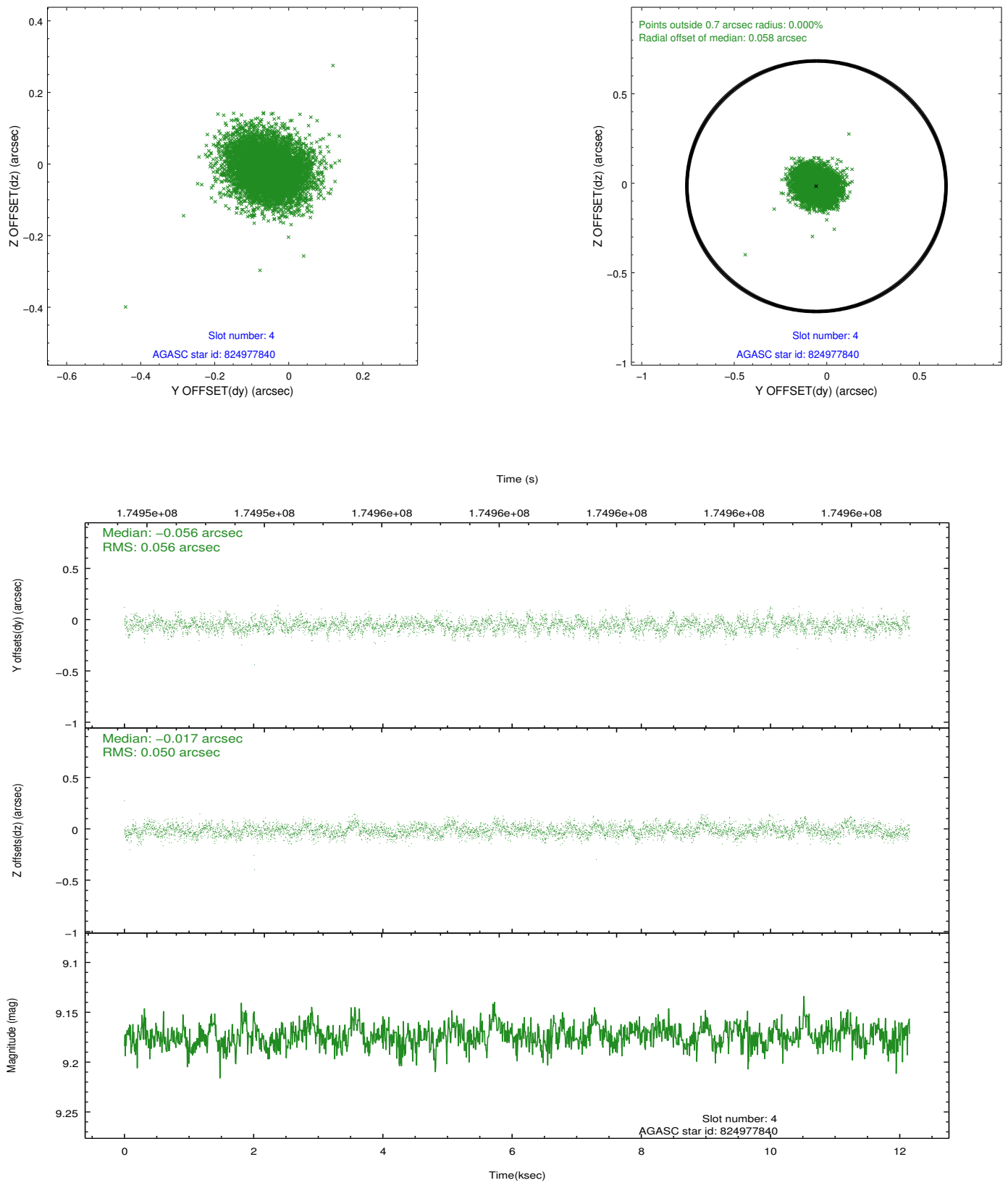
slot	status	id	mag	n_pts	med_dy	med_dz	dr1	dr2	ra	dec	mean_y	mean_z
0	FID	HRC-S-1	7.05	2965	0.155	-0.180	0.030	0.061	0.000000	0.000000	-1162.50	-459.64
1	FID	HRC-S-2	7.04	2965	0.128	-0.111	0.007	0.014	0.000000	0.000000	1236.76	-452.39
2	FID	HRC-S-3	7.05	2964	0.106	-0.010	0.032	0.070	0.000000	0.000000	-1164.84	569.89
3	GUIDE	824976424	7.58	5930	-0.112	-0.003	0.064	0.103	284.900091	-21.828249	-614.29	-1212.32
4	GUIDE	824977840	9.17	5930	-0.056	-0.017	0.079	0.130	285.448876	-22.329632	1274.79	531.26
5	GUIDE	824979304	8.97	5929	-0.026	0.020	0.079	0.129	285.497931	-22.093264	433.25	736.59
6	GUIDE	824970200	9.56	5929	-0.084	0.088	0.114	0.184	284.845750	-21.379569	-2235.57	-1321.32
7	GUIDE	899154168	9.41	5928	0.277	-0.092	0.147	0.250	284.628850	-22.662641	2346.63	-2248.83

2.4 Star Slots

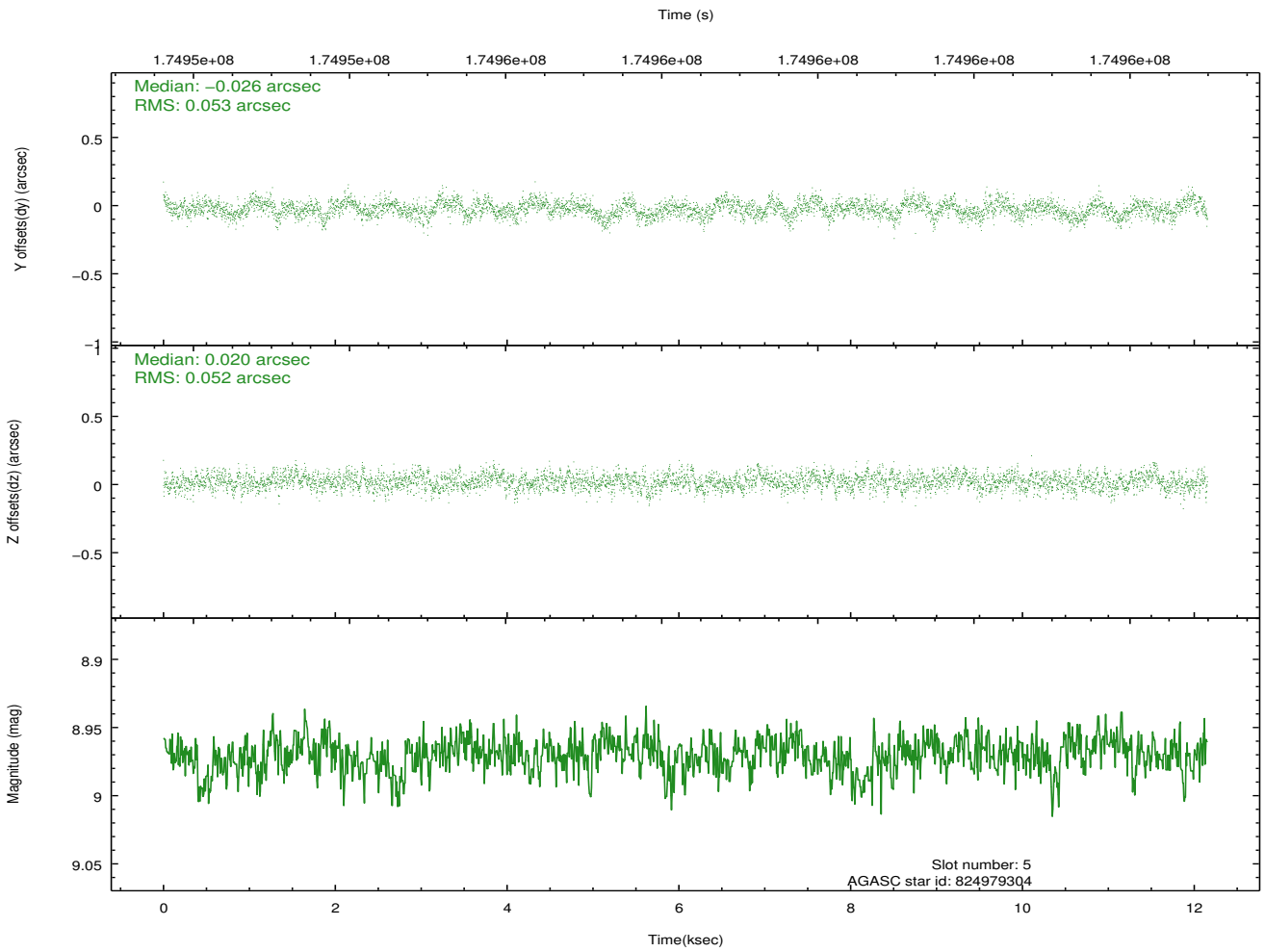
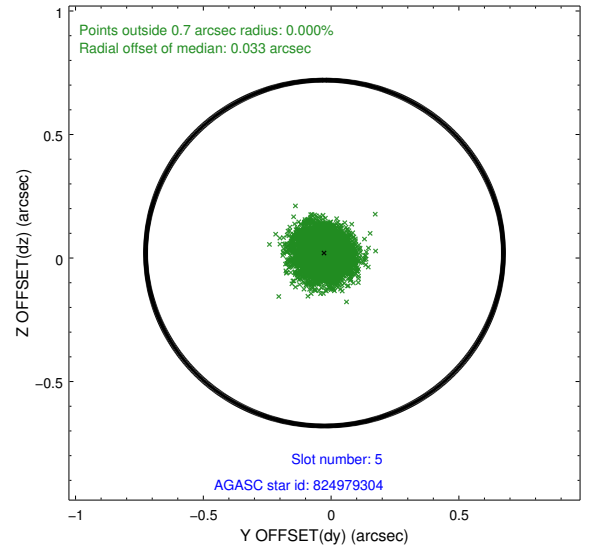
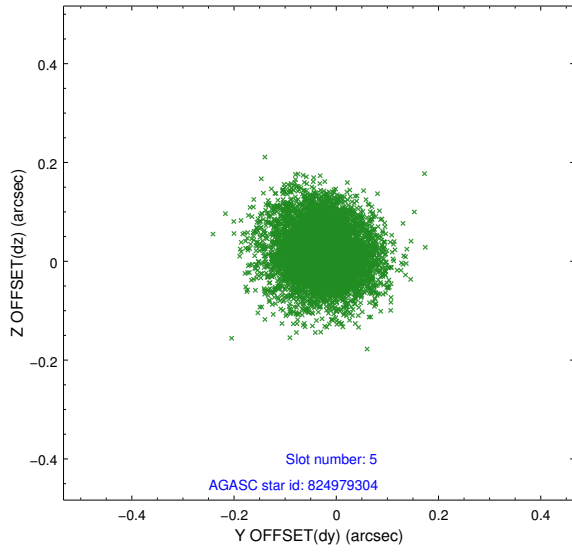
2.4.1 Slot 3



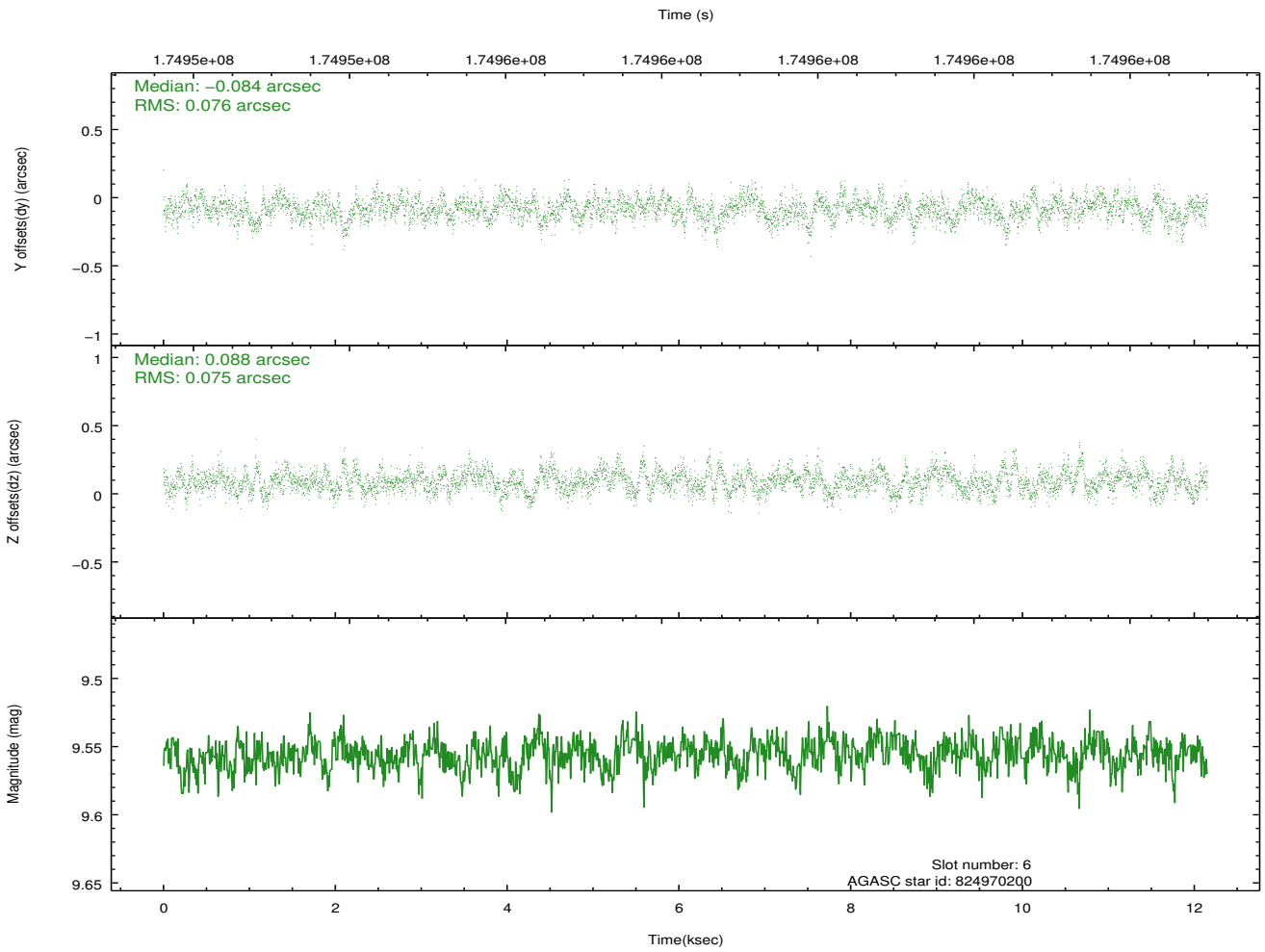
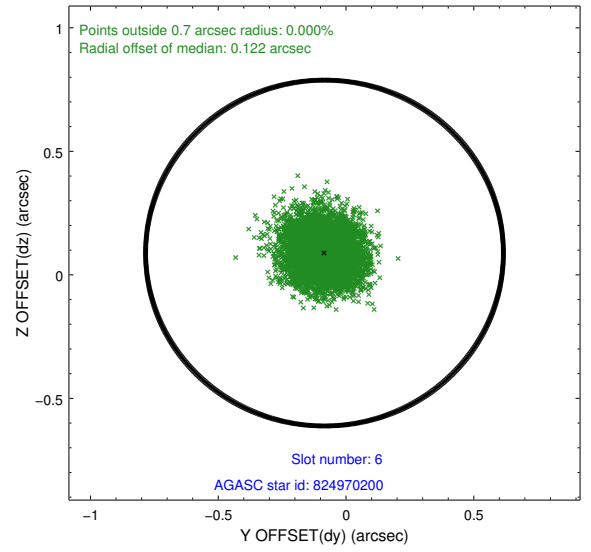
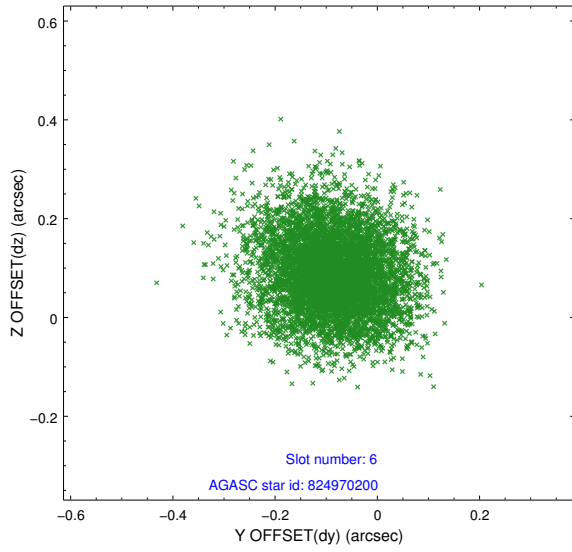
2.4.2 Slot 4



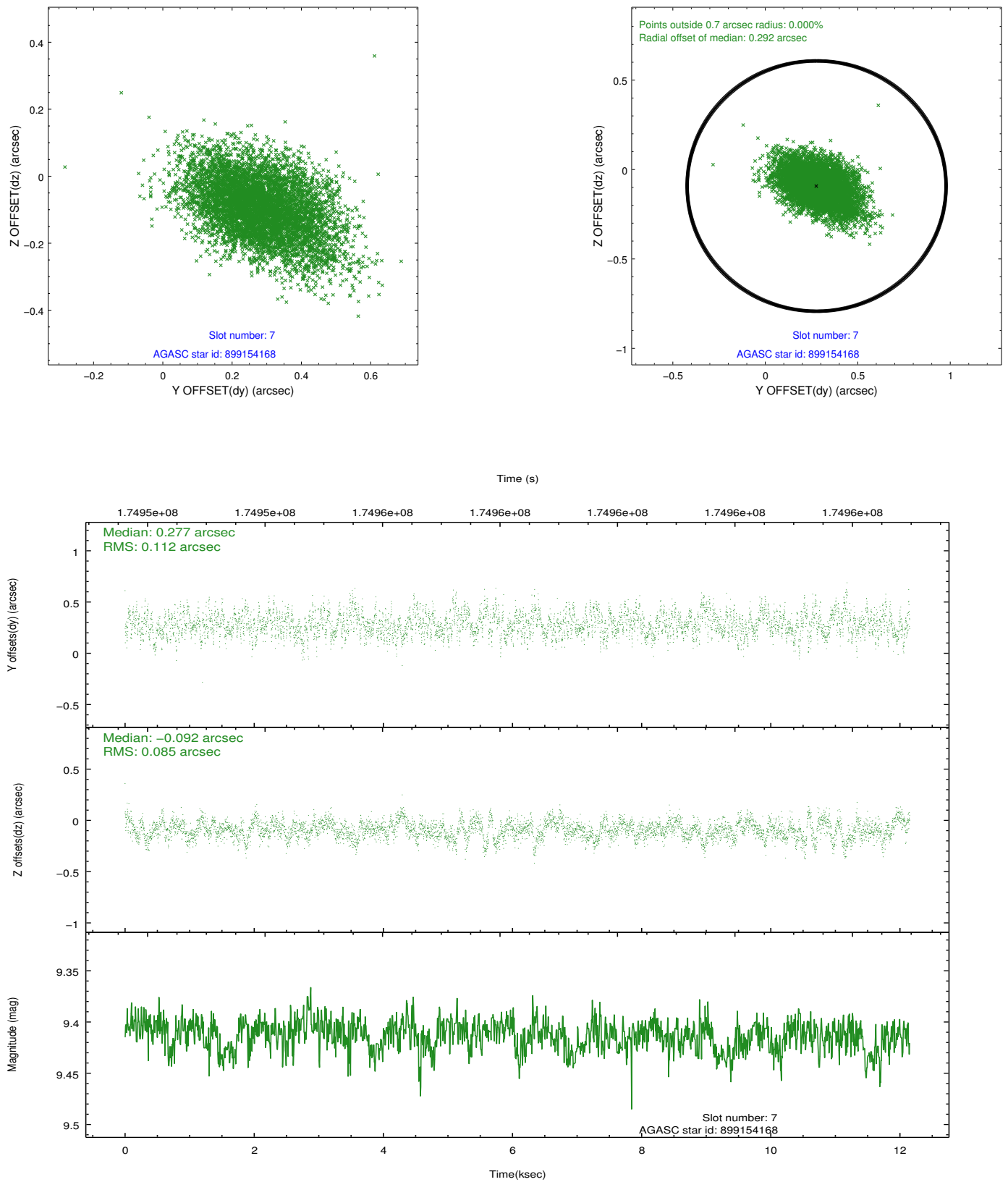
2.4.3 Slot 5



2.4.4 Slot 6

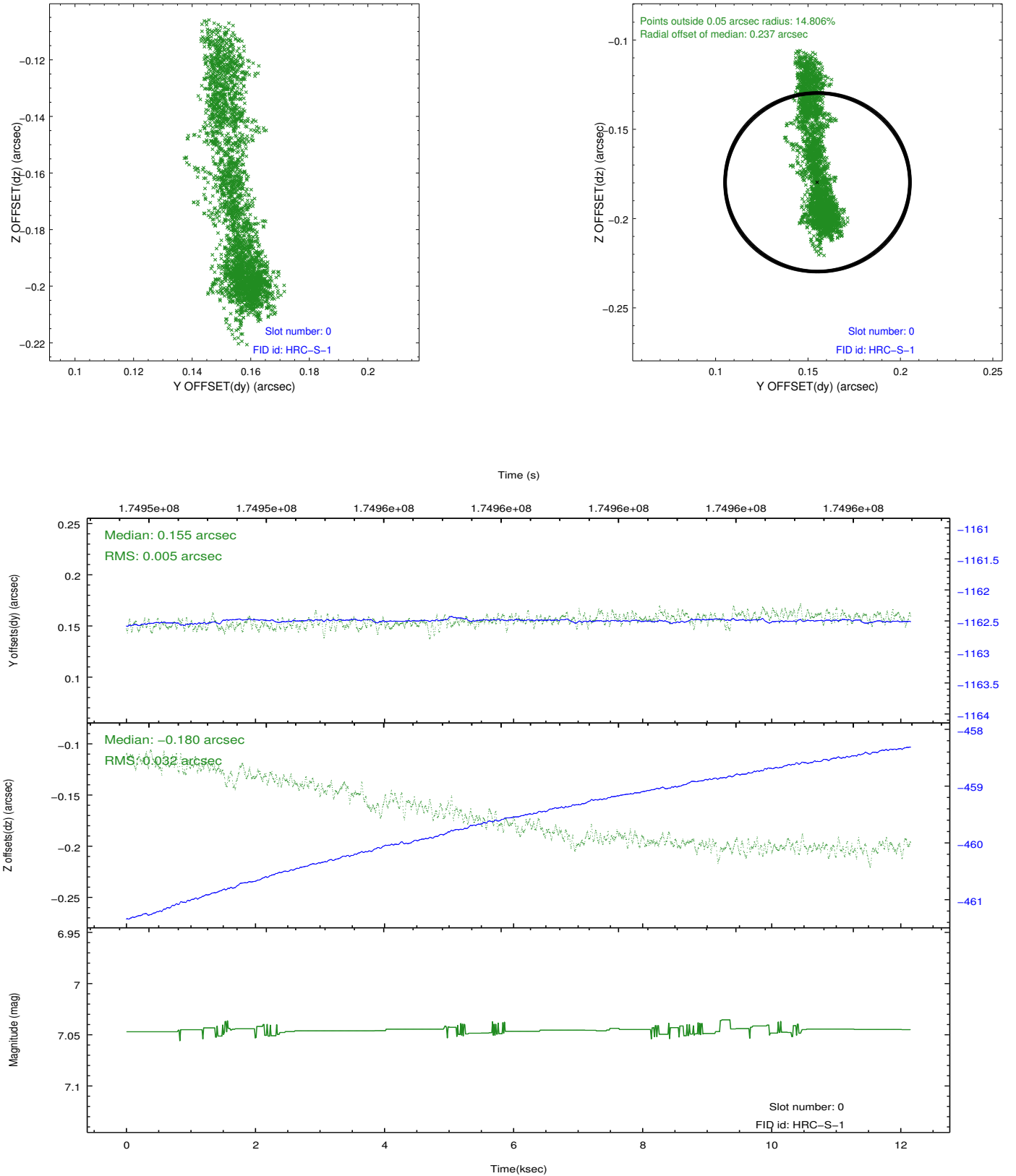


2.4.5 Slot 7

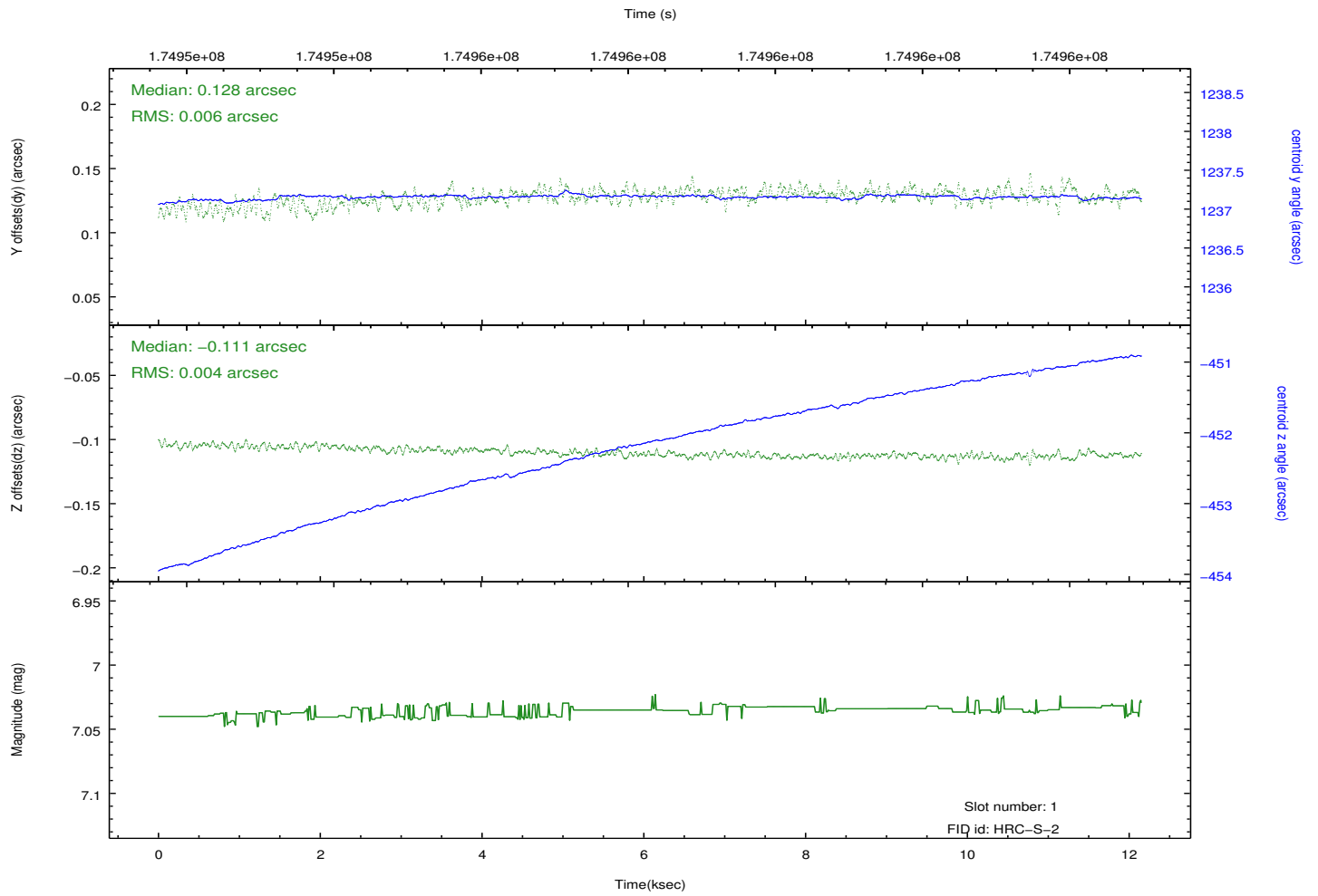
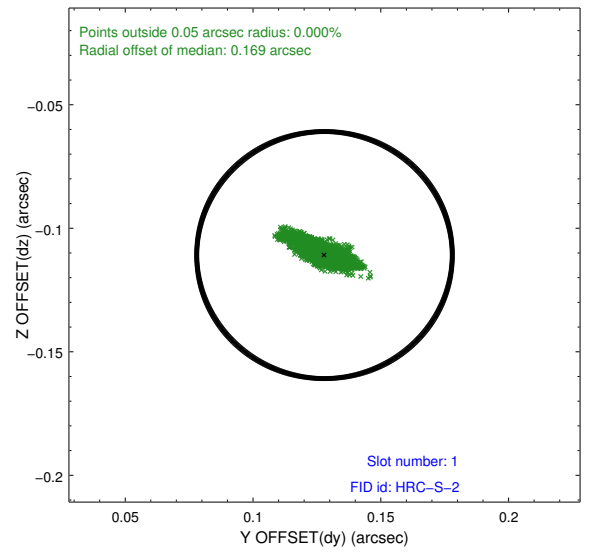
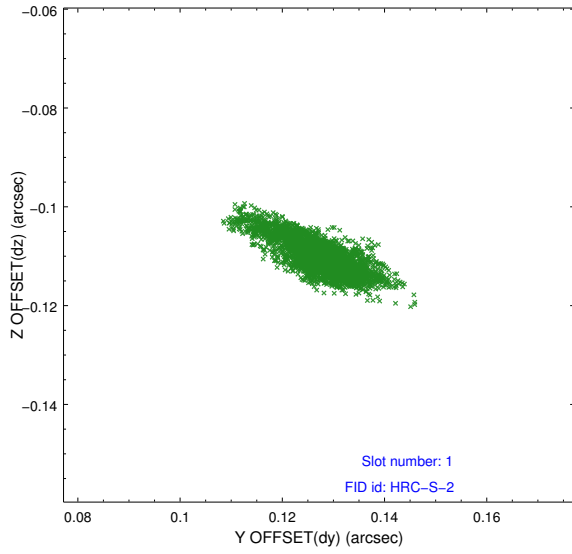


2.5 FID Slots

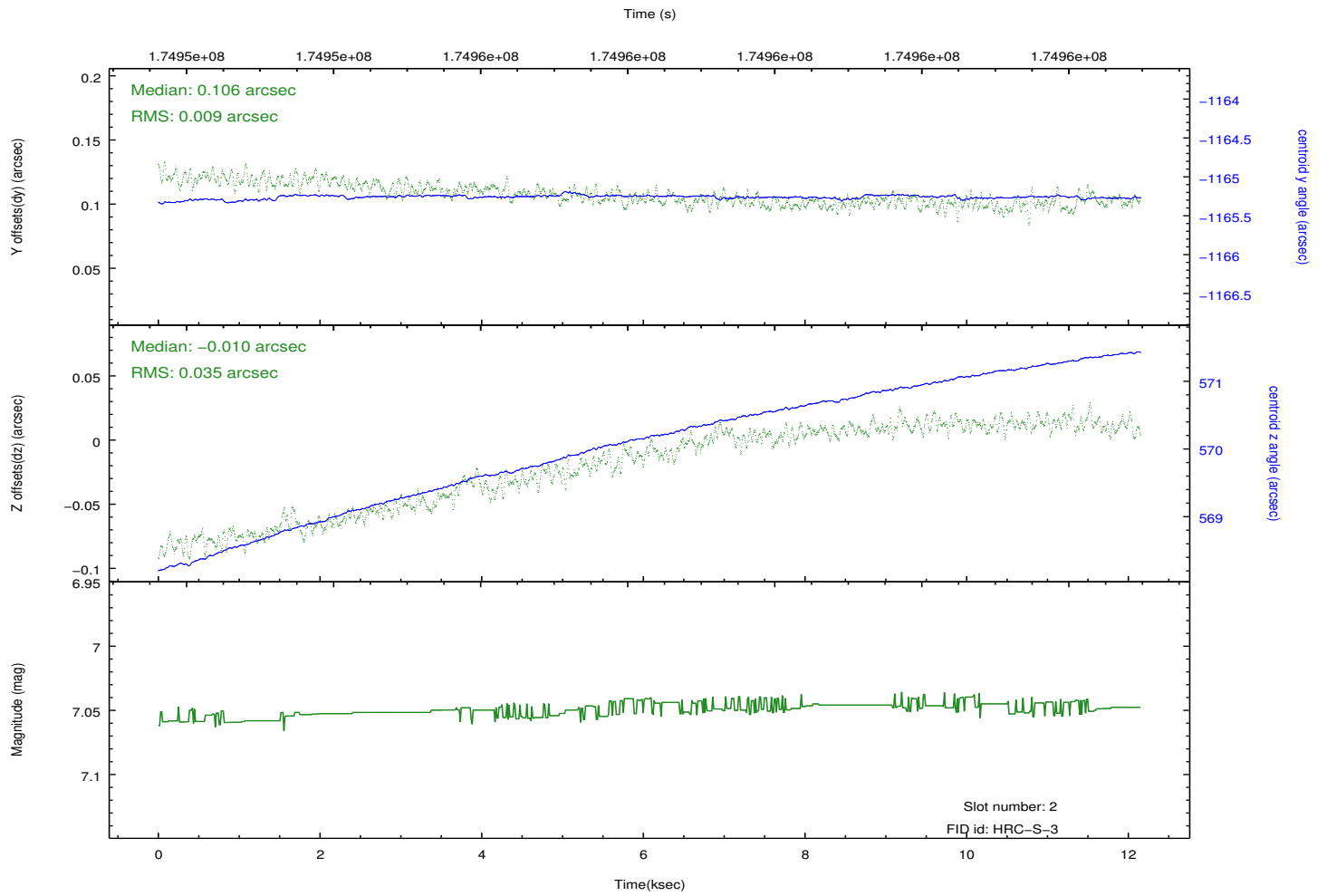
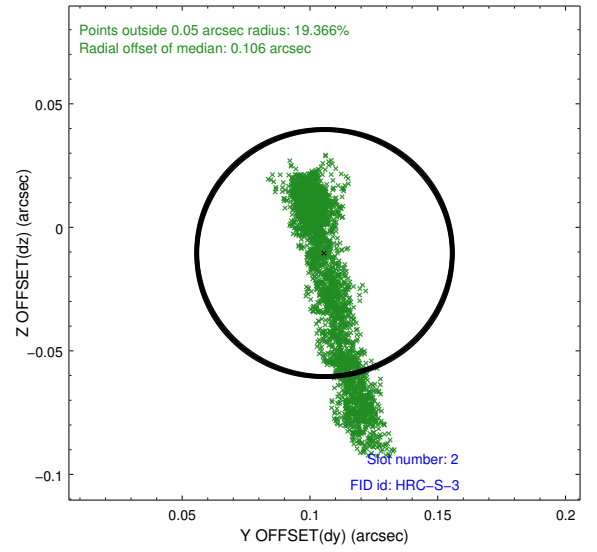
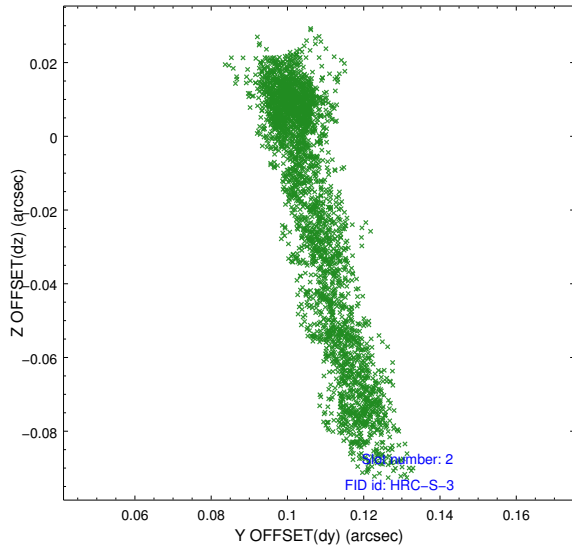
2.5.1 Slot 0



2.5.2 Slot 1

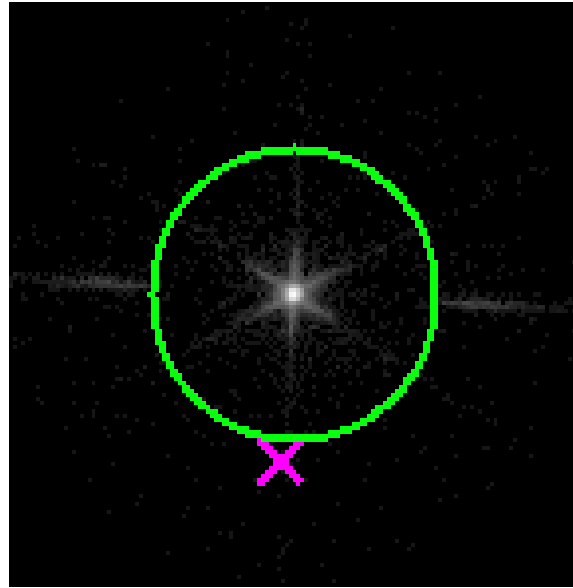


2.5.3 Slot 2

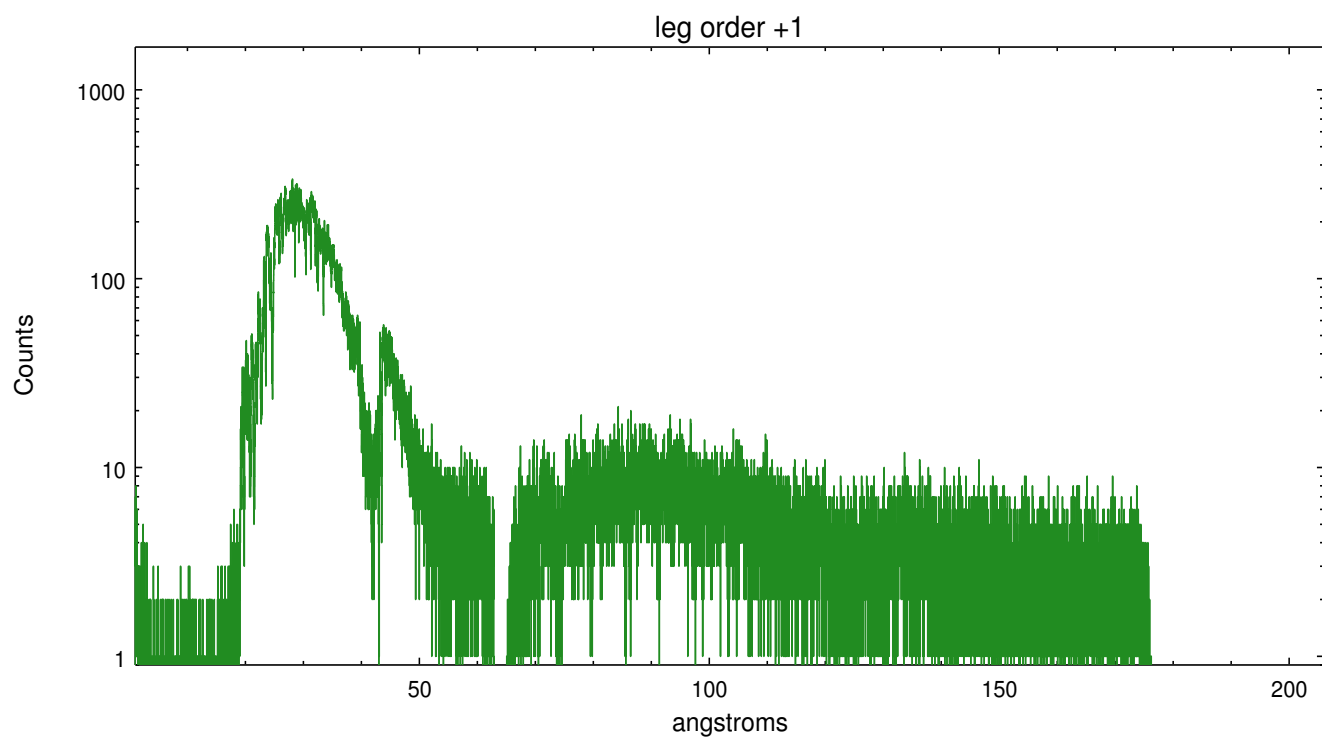
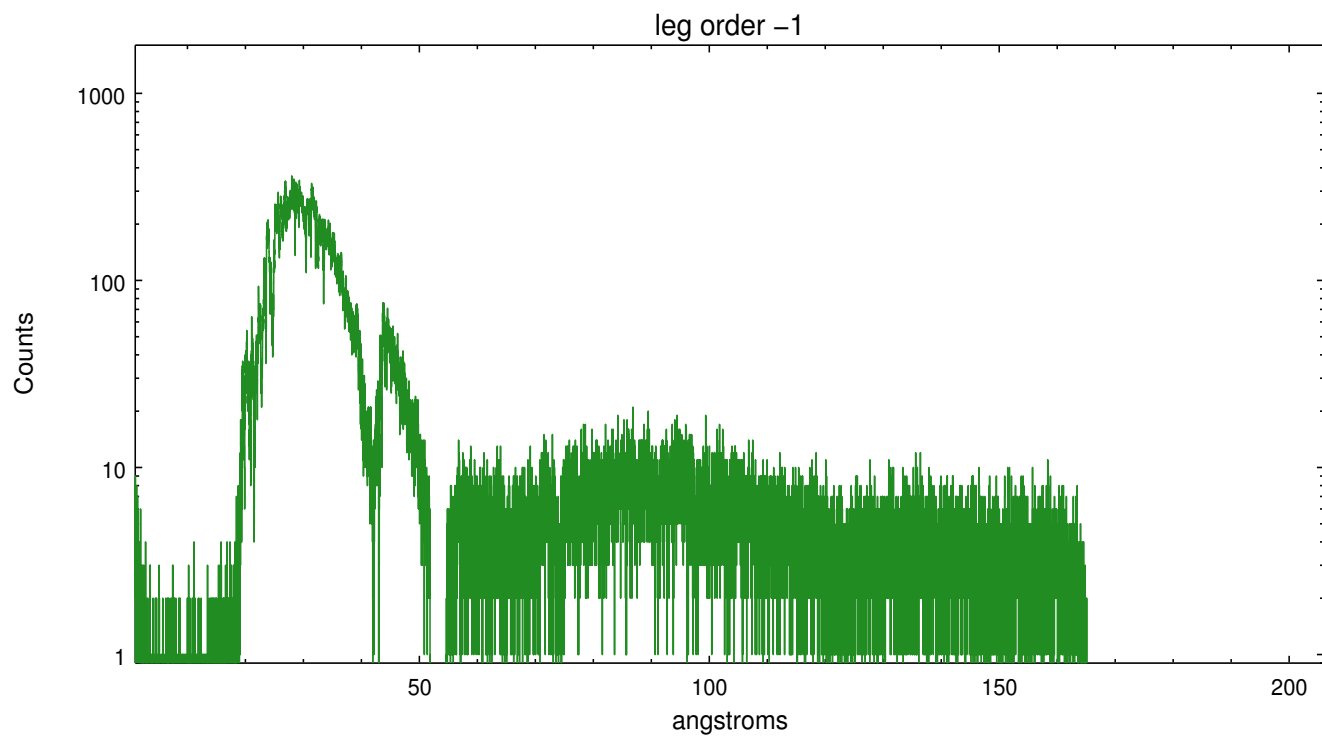


3 Gratings

3.1 LETG Arm



LETG Zero Order



A Summary

A.1 Status

V&V Scientist	Joy Nichols
V&V Date (YYYY-MM-DD)	2012.12.13
V&V Edition	1
V&V Disposition and Status	OK
V&V Charge Time	11.829

A.2 Comments