

# V&V Reference Report

## L2 ASCDS Version : 8.4.5

Observation 3826 - L2 Version 3  
Chandra X-Ray Center

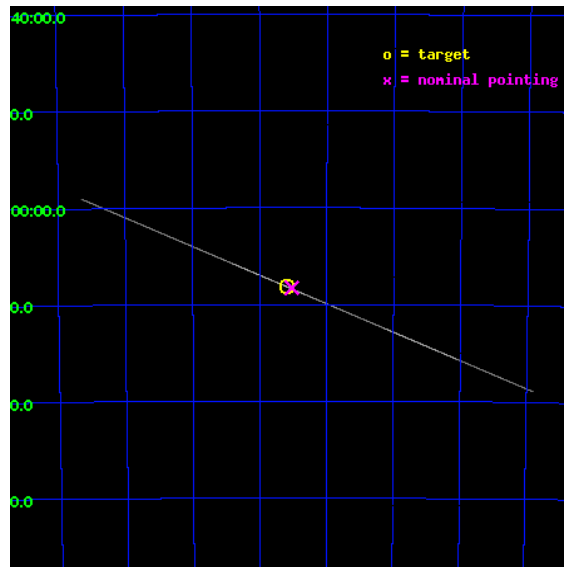
L2 Processing Date : Nov 4 2012

## Contents

<b>1</b>	<b>Front</b>	<b>2</b>
<b>2</b>	<b>OBI</b>	<b>3</b>
2.1	OBI . . . . .	3
2.1.1	Images . . . . .	3
2.1.2	Bias . . . . .	3
2.1.3	Parameters . . . . .	4
2.1.4	Events . . . . .	4
2.2	Compared Parameters . . . . .	5
2.3	Aspect . . . . .	6
2.4	Star Slots . . . . .	9
2.4.1	Slot 3 . . . . .	9
2.4.2	Slot 4 . . . . .	10
2.4.3	Slot 5 . . . . .	11
2.4.4	Slot 6 . . . . .	12
2.4.5	Slot 7 . . . . .	13
2.5	FID Slots . . . . .	14
2.5.1	Slot 0 . . . . .	14
2.5.2	Slot 1 . . . . .	15
2.5.3	Slot 2 . . . . .	16
<b>3</b>	<b>Gratings</b>	<b>17</b>
3.1	HEG Arm . . . . .	17
3.2	MEG Arm . . . . .	19
<b>A</b>	<b>Summary</b>	<b>21</b>
A.1	Status . . . . .	21
A.2	Comments . . . . .	21

# 1 Front

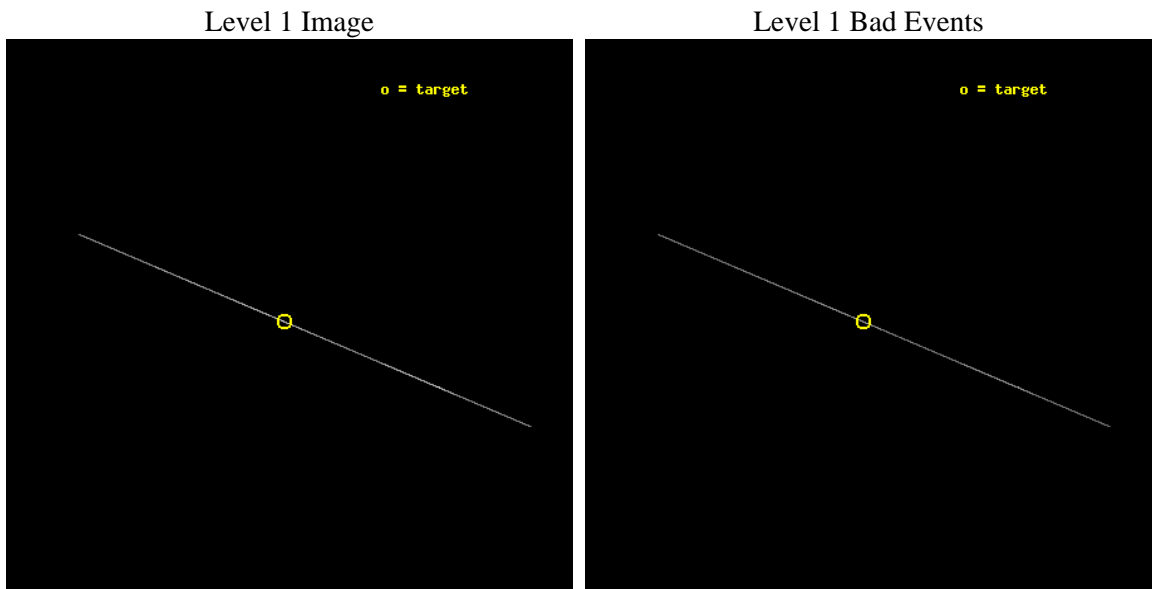
seq_num	400313	Sequence number
obs_id	3826	Observation id
title	``QPO-FOLDED" SPECTROSCOPIC OF THE LOW-MASS X-RAY BINARY AND DIPPER 4U 1323-62	Proposal title
observer	Prof Mariano Mendez	Principal investigator
object	4U 1323-619	Source name
ra_targ	201.650417	Observer's specified target RA [deg]
dec_targ	-62.136111	Observer's specified target Dec [deg]
ra_nom	201.63023030912	Nominal RA [deg]
dec_nom	-62.138237817944	Nominal Dec [deg]
roll_nom	202.79152173987	Nominal Roll [deg]
revision	3	Processing version of data
ontime	38158.5	Sum of GTIs [s]
livetime	38009.443359375	Livetime [s]
ontime4	38158.5	Sum of GTIs [s]
ontime5	38158.5	Sum of GTIs [s]
ontime6	38158.5	Sum of GTIs [s]
ontime7	38158.5	Sum of GTIs [s]
ontime8	38158.5	Sum of GTIs [s]
ontime9	38158.5	Sum of GTIs [s]
l2events	540392	Number of level 2 events



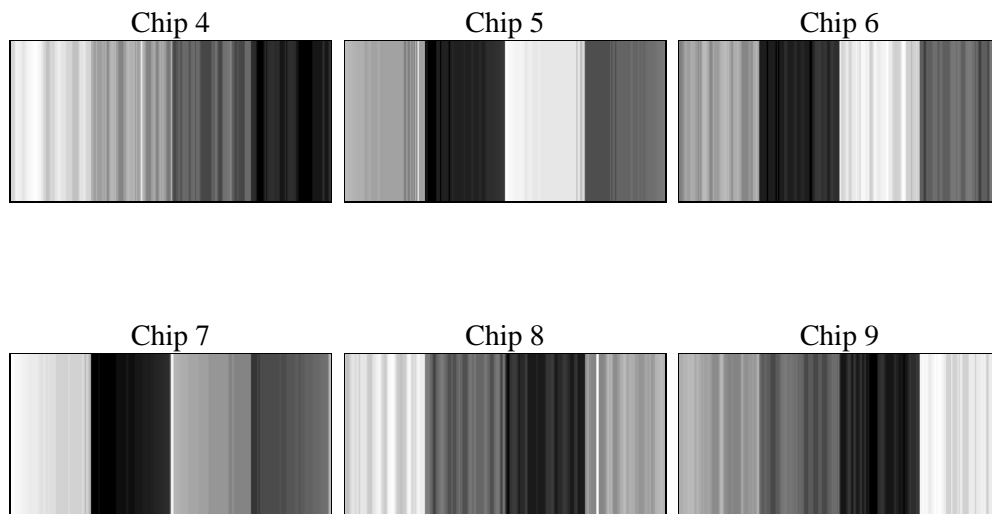
## 2 OBI

### 2.1 OBI

#### 2.1.1 Images



#### 2.1.2 Bias



### 2.1.3 Parameters

obi_num	0	Obi number	sched_exp_time	38000.000000	[s] Scheduled observation exposure time
ascdsver	8.4.5	Processing system revision	ontime	38158.5	Sum of GTIs [s]
caldbver	4.5.2	&#160	ontime4	38158.5	Sum of GTIs [s]
date	2012-11-04T12:11:23	Date and time of file creation	ontime5	38158.5	Sum of GTIs [s]
revision	3	Processing version of data	ontime6	38158.5	Sum of GTIs [s]
			ontime7	38158.5	Sum of GTIs [s]
			ontime8	38158.5	Sum of GTIs [s]
			ontime9	38158.5	Sum of GTIs [s]
			l1events	788819	Number of level 1 events

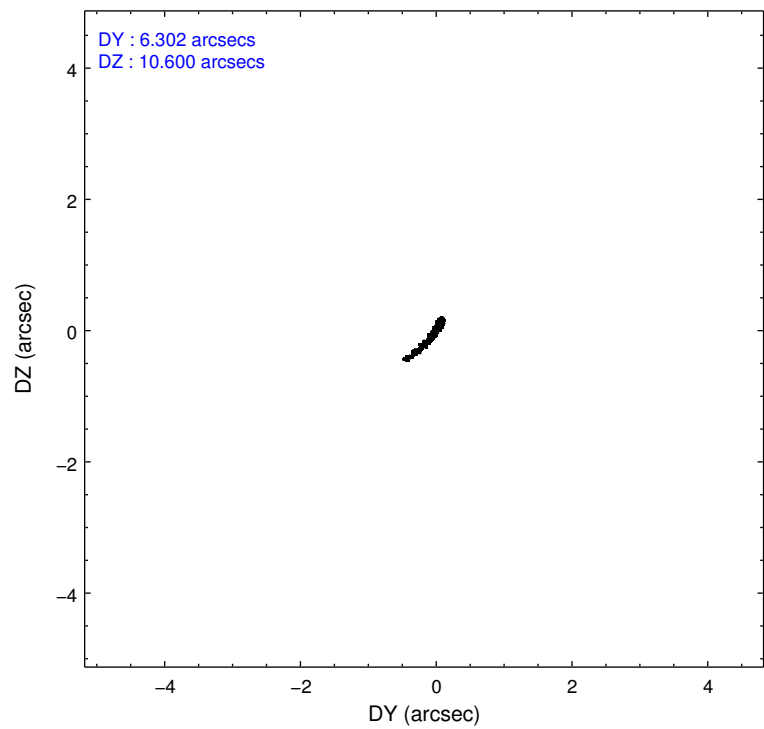
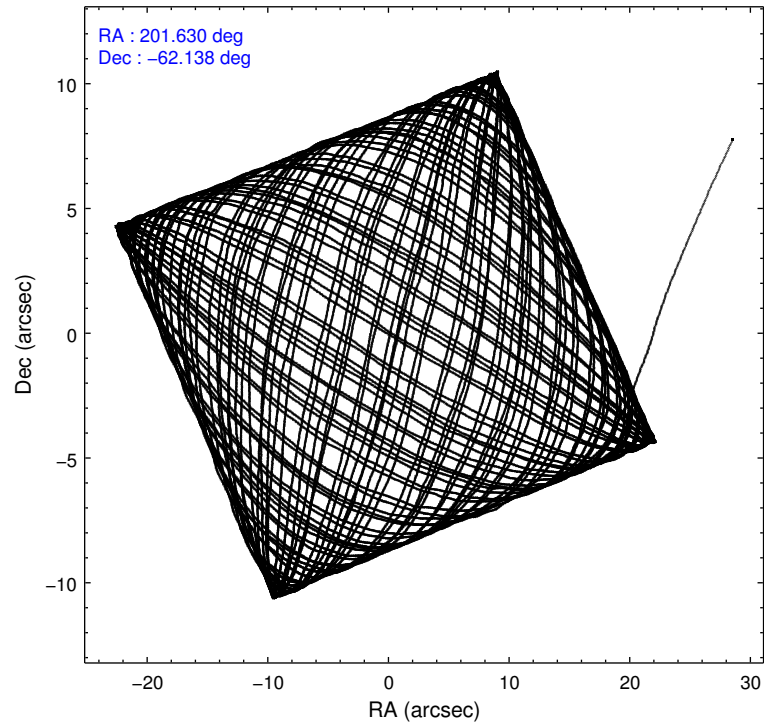
### 2.1.4 Events

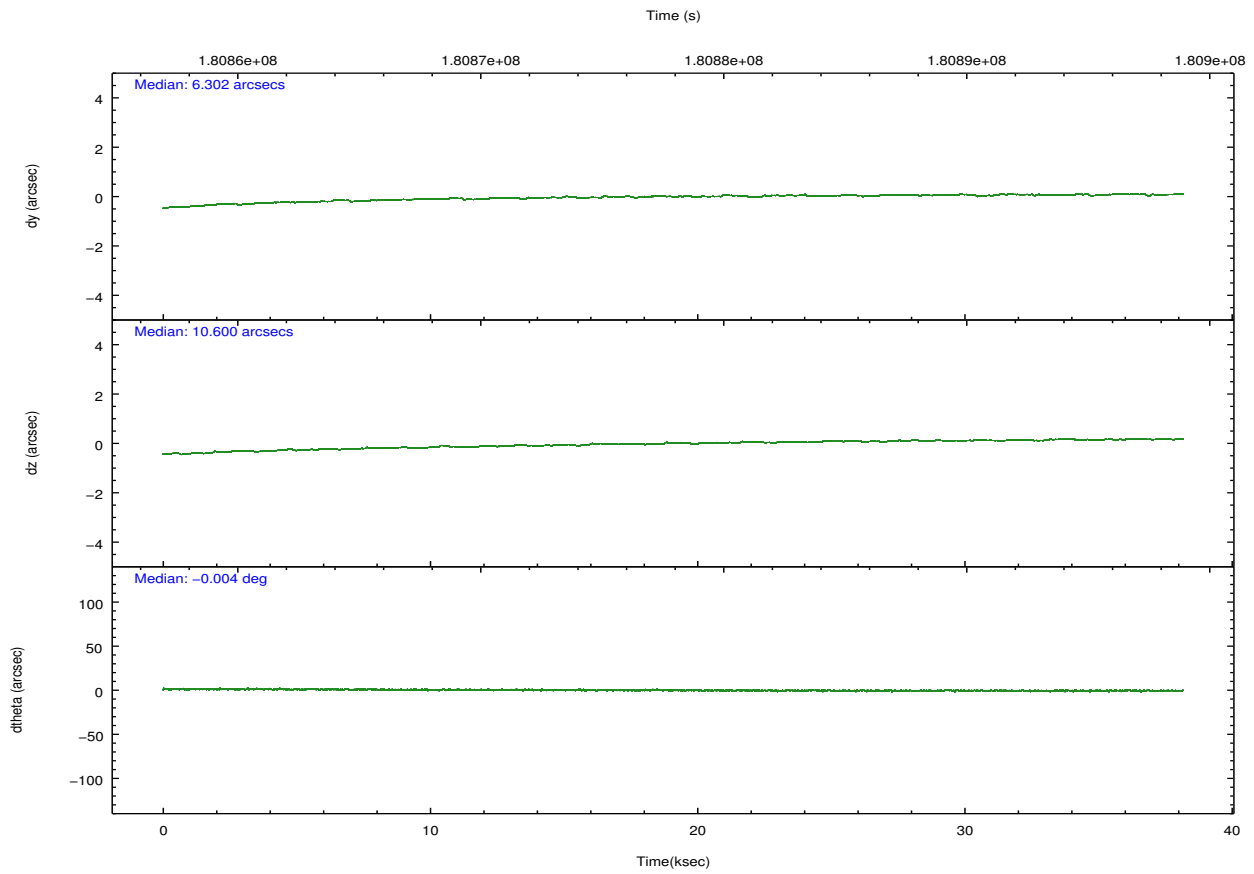
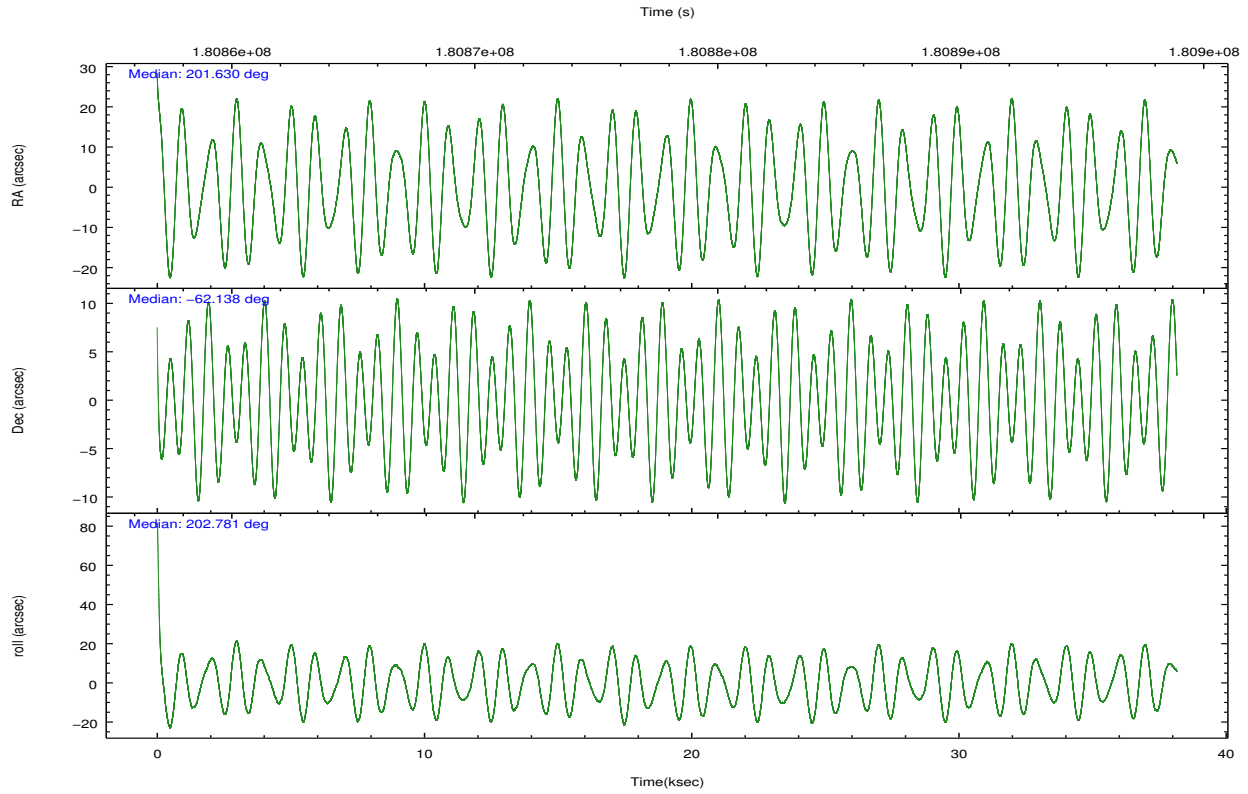
	ccd 4	ccd 5	ccd 6	ccd 7	ccd 8	ccd 9		ccd 4	ccd 5	ccd 6	ccd 7	ccd 8	ccd 9
level 1 events	54691	248088	72484	246815	109692	57049	grade 0 events	5955	54084	6076	28267	18455	6159
rejected events	10748	30336	12207	32779	17398	12604		10%	21%	8%	11%	16%	10%
rejected %	19%	12%	16%	13%	15%	22%	grade 1 events	195	331	179	429	344	233
								0%	0%	0%	0%	0%	0%
							grade 2 events	17189	61853	31531	54796	30260	16942
								31%	24%	43%	22%	27%	29%
							grade 3 events	6241	4561	5646	17908	10700	5358
								11%	1%	7%	7%	9%	9%
							grade 4 events	6532	4436	5535	17505	10587	5965
								11%	1%	7%	7%	9%	10%
							grade 5 events	9275	22802	10658	27463	14609	11098
								16%	9%	14%	11%	13%	19%
							grade 6 events	9304	100021	12859	100447	24737	11294
								17%	40%	17%	40%	22%	19%
							grade 7 events	0	0	0	0	0	0
								0%	0%	0%	0%	0%	0%

## 2.2 Compared Parameters

Parameter	Planned	Actual	Parameter	Planned	Actual
Instrument	ACIS	ACIS	Obspar format version number	7	7
Detector	ACIS-456789	ACIS-456789	Obspar file type	PREDICTED	ACTUAL
Grating	HETG	HETG	Obspar update status	NONE	UPDATED
Data mode	CC33_FAINT	CC33_FAINT	Number of optional ACIS chips dropped	0	0
Observation mode	POINTING	POINTING	On-chip summing requested	N	N
[deg] Pointing RA	201.664819	201.6302303091209	Subarray requested	NONE	NONE
[deg] Pointing Dec	-62.116318	-62.13823781794385	Alternating exposures requested	N	N
[deg] Pointing Roll	202.665452	202.7915217398745	[s] Primary exposure time	0.000000	0
[mm] SIM focus pos	-0.684267	-0.6828225247311905			
[mm] SIM defocus	0	0.001444936568705701			
[mm] SIM translation stage pos	-186.132523	-186.1397904050899			
[mm] SIM translation stage offset	-4	-3.992732177917873			
[s] Observation start time (MET)	180858990.184000	180857591.38284			
Observation start date	2003-09-25T06:35:26	2003-09-25T06:13:11			
[s] Observation end time (MET)	180896990.184000	180897678.62206			
Observation end date	2003-09-25T17:08:46	2003-09-25T17:21:18			
Read mode	CONTINUOUS	CONTINUOUS			

## 2.3 Aspect





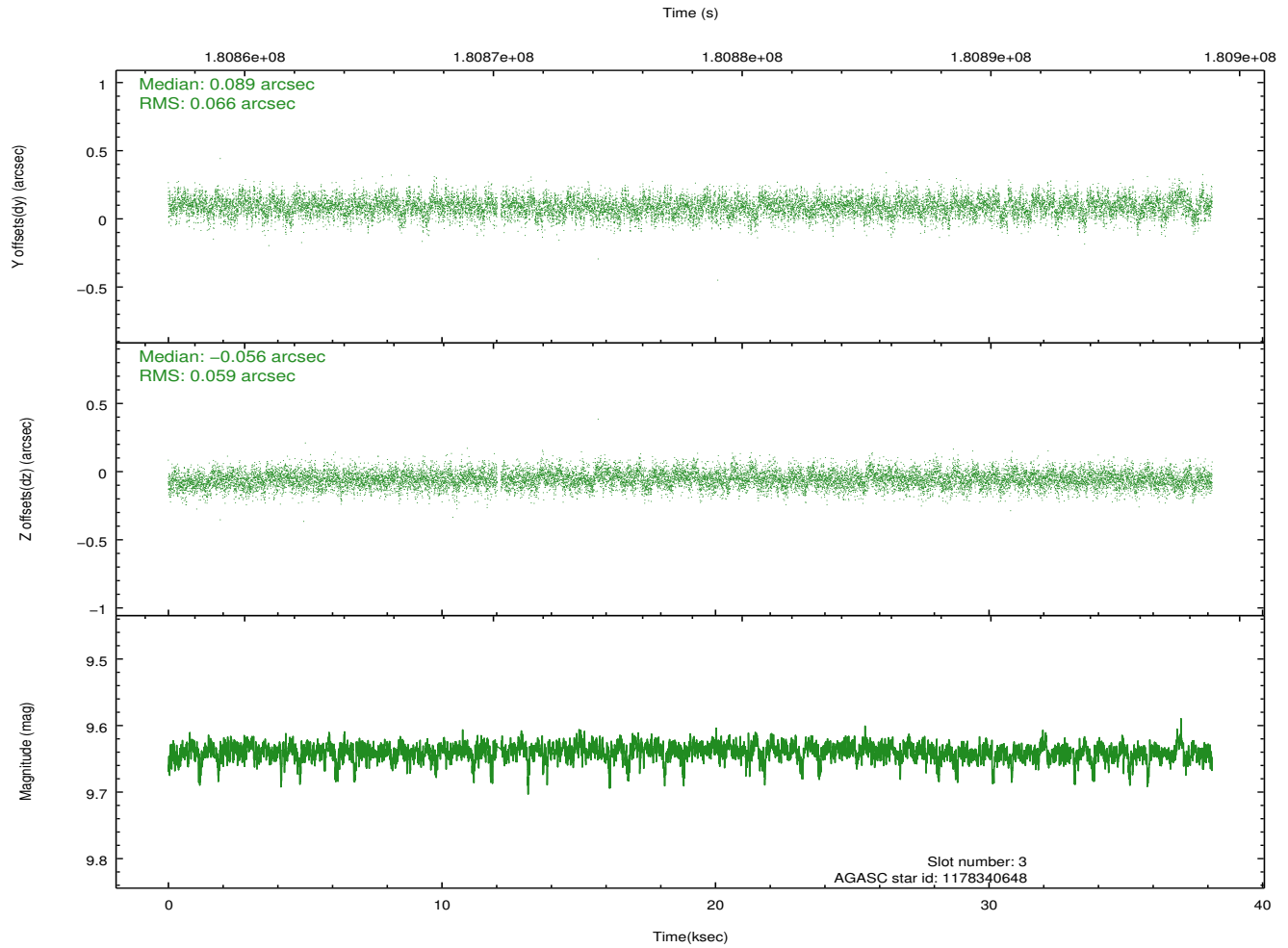
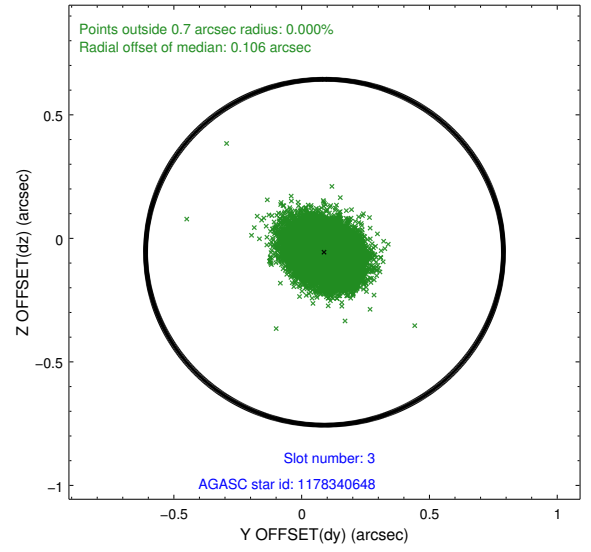
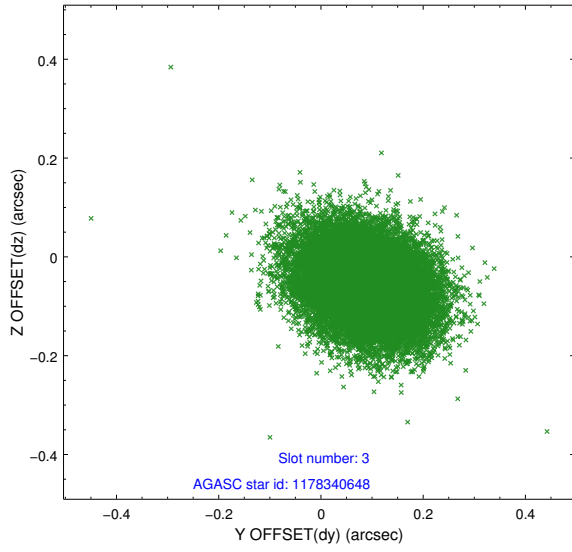
### Slot Statistics

slot	status	id	mag	n_pts	med_dy	med_dz	dr1	dr2	ra	dec	mean_y	mean_z
0	FID	ACIS-S-2	7.08	9307	-0.089	-0.068	0.006	0.026	0.000000	0.000000	-758.81	-1814.26
1	FID	ACIS-S-4	7.18	9308	0.043	0.057	0.006	0.019	0.000000	0.000000	2154.60	94.29
2	FID	ACIS-S-6	7.38	9308	0.018	0.019	0.007	0.014	0.000000	0.000000	403.33	731.69
3	GUIDE	1178340648	9.64	18538	0.089	-0.056	0.093	0.154	200.205772	-61.737899	1781.67	-2189.18
4	GUIDE	1178868872	8.94	18609	0.091	-0.128	0.067	0.108	201.064306	-62.258562	1128.11	89.25
5	GUIDE	1179008976	8.90	18523	-0.054	0.090	0.064	0.105	202.320416	-62.367284	-659.77	1260.85
6	GUIDE	1179016592	8.92	18611	-0.081	0.087	0.066	0.107	202.517430	-62.293843	-1067.03	1148.51
7	GUIDE	1179017888	9.57	18610	-0.045	0.009	0.089	0.148	202.573145	-62.346477	-1076.99	1359.33

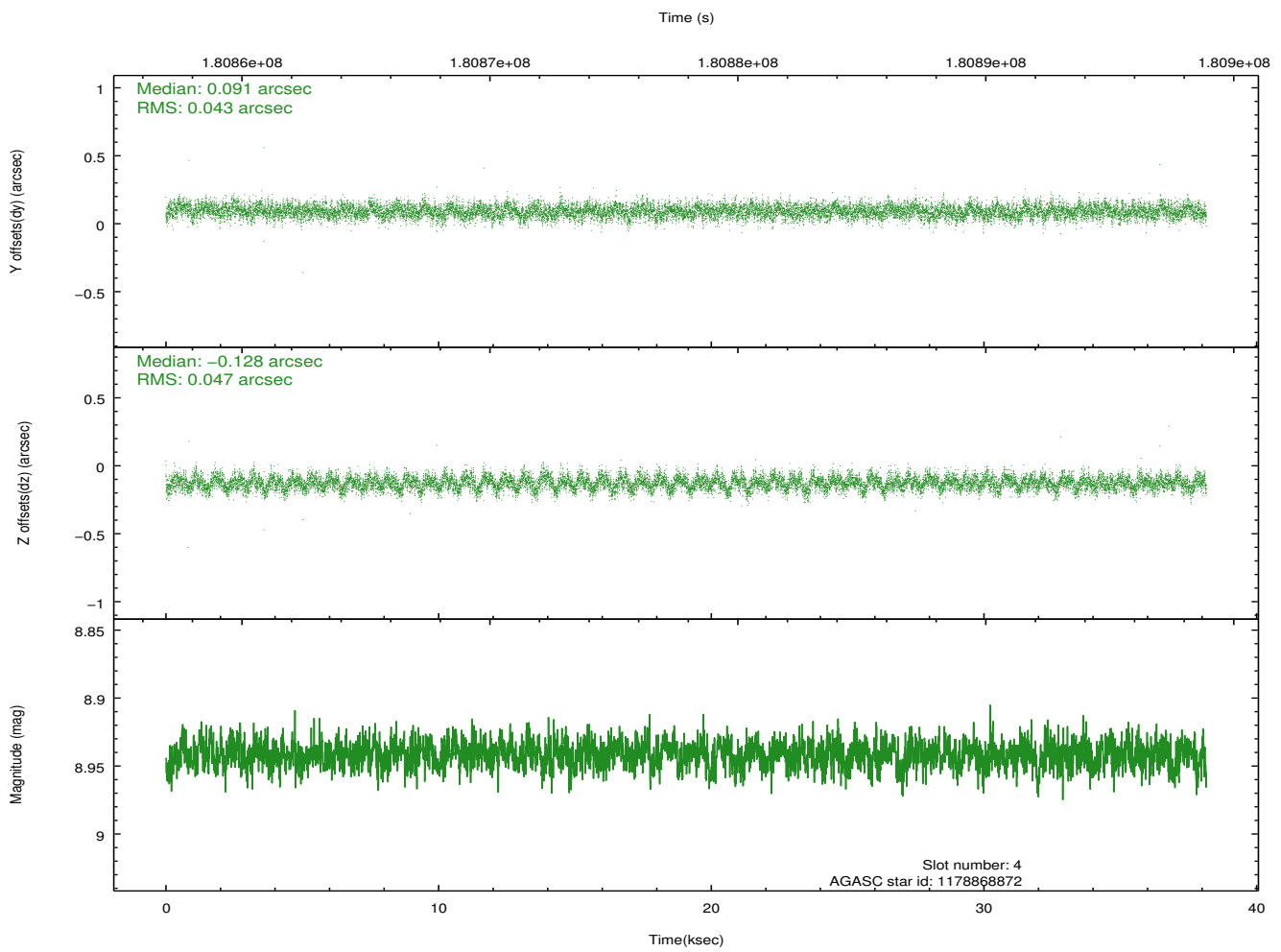
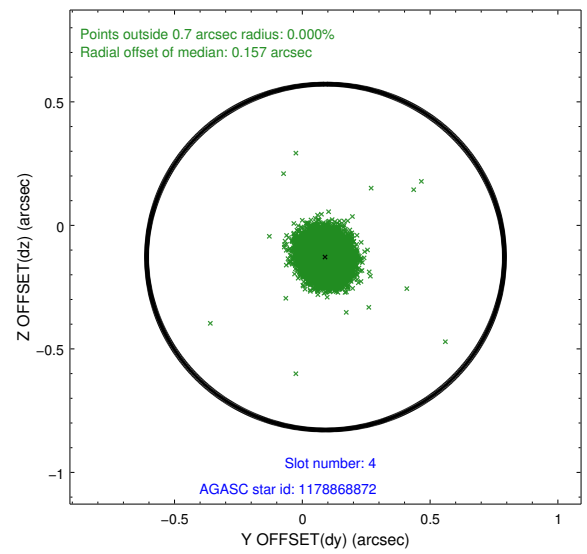
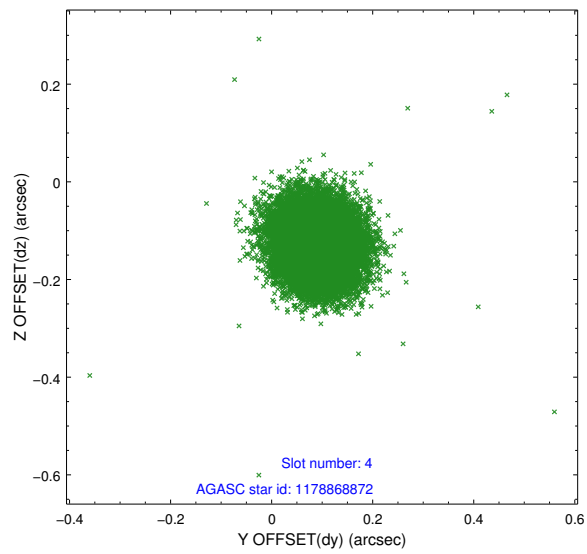
∞

## 2.4 Star Slots

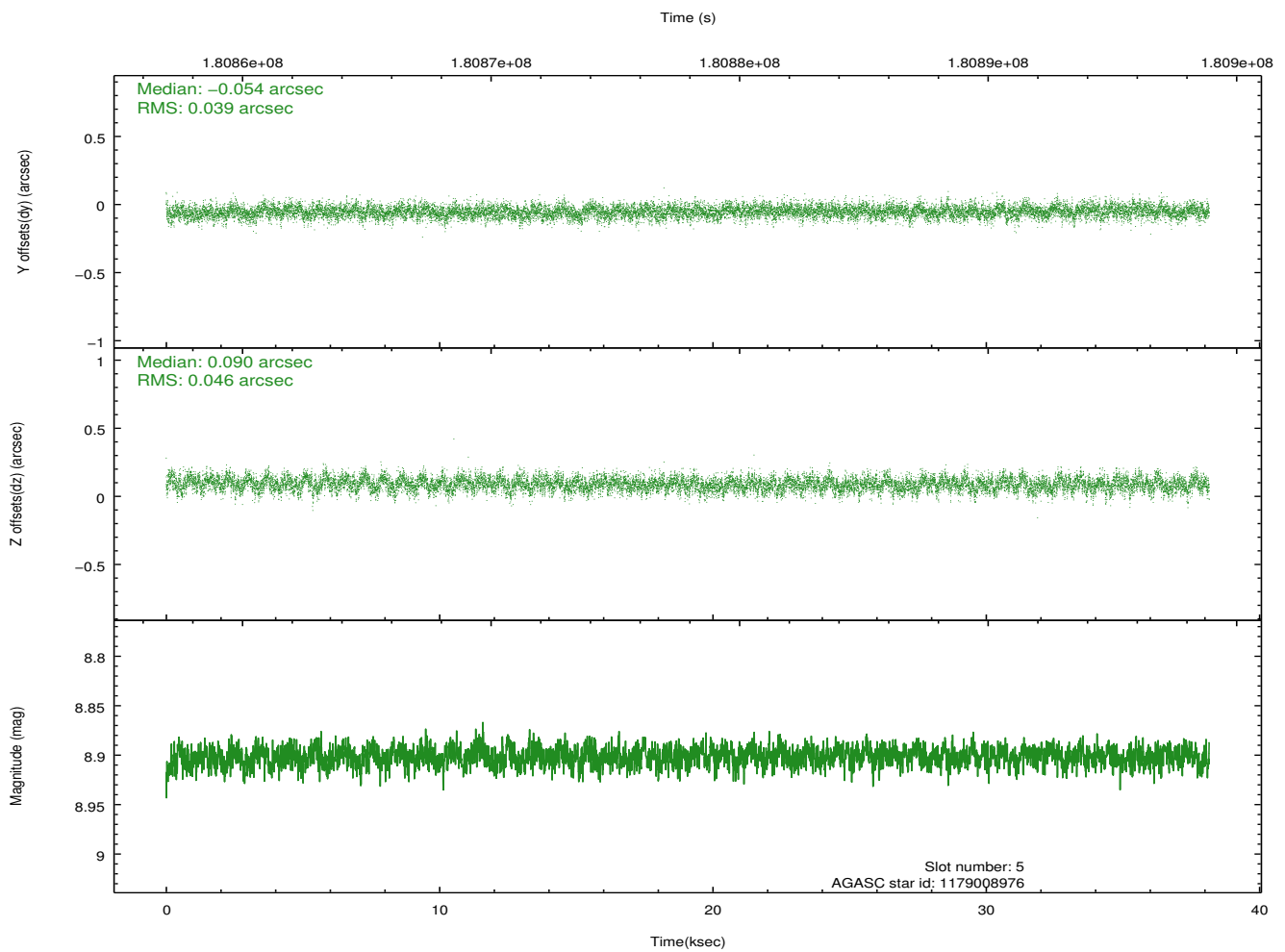
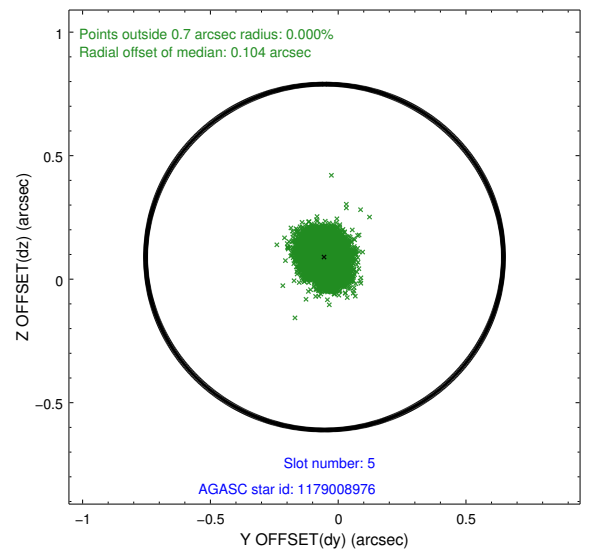
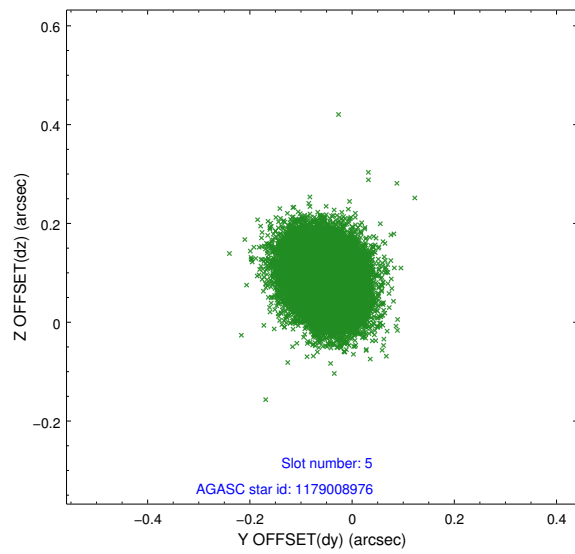
### 2.4.1 Slot 3



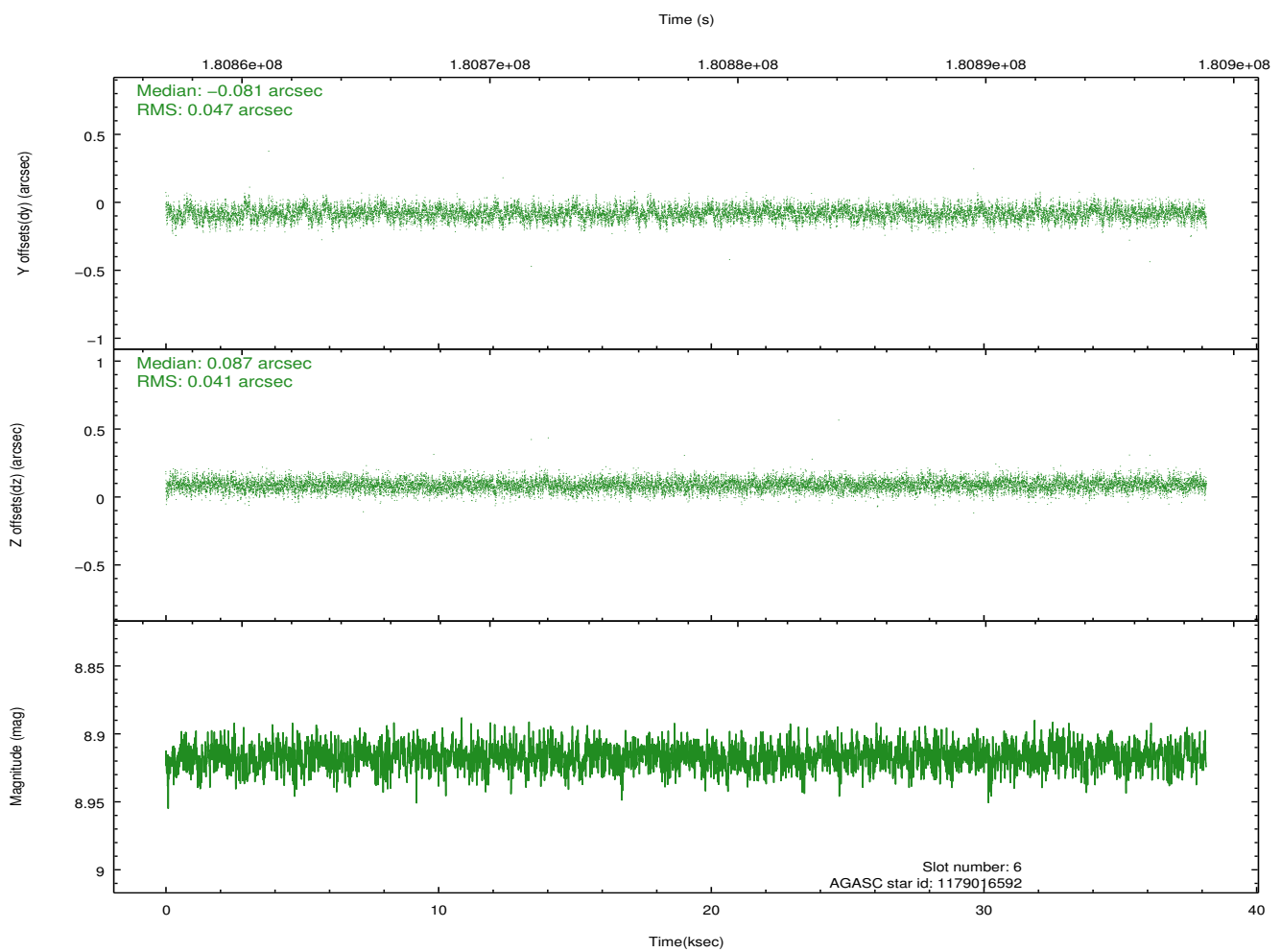
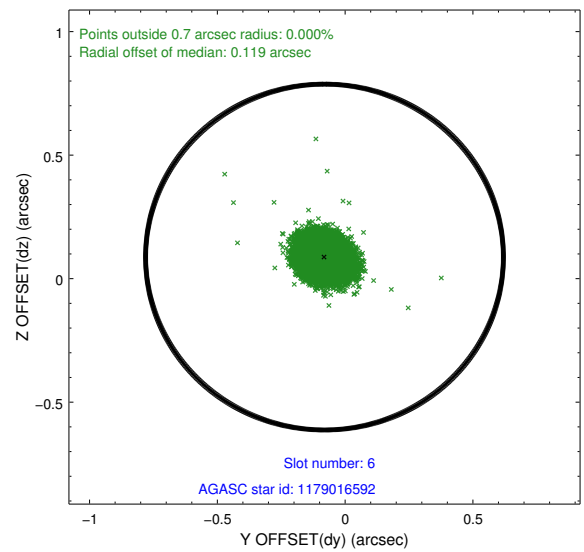
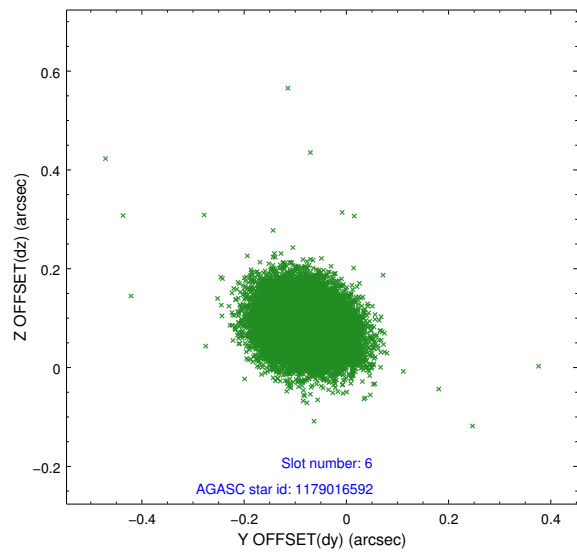
## 2.4.2 Slot 4



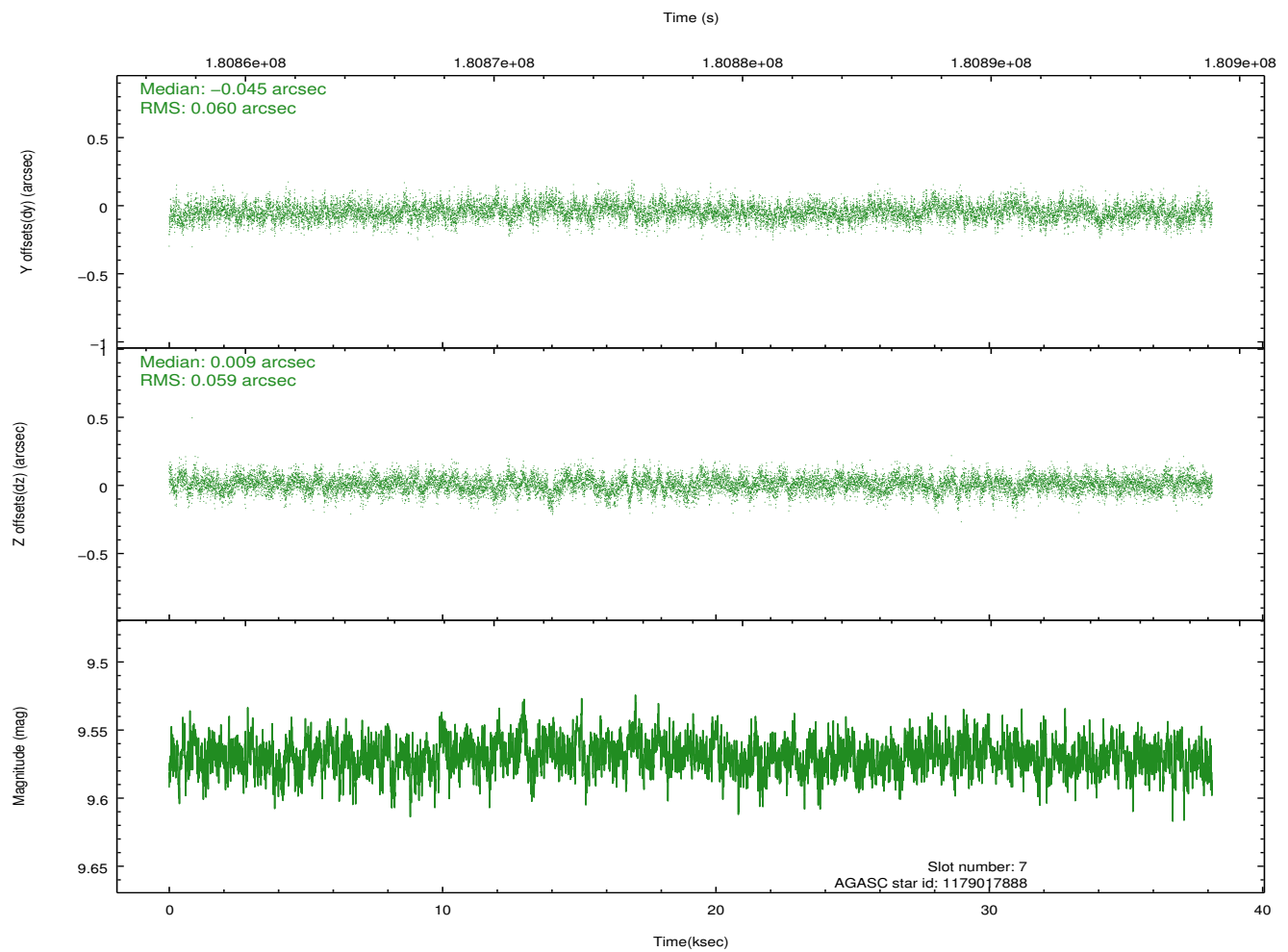
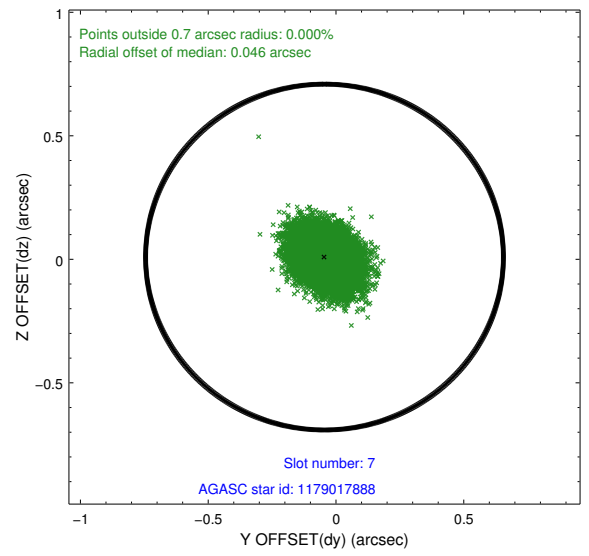
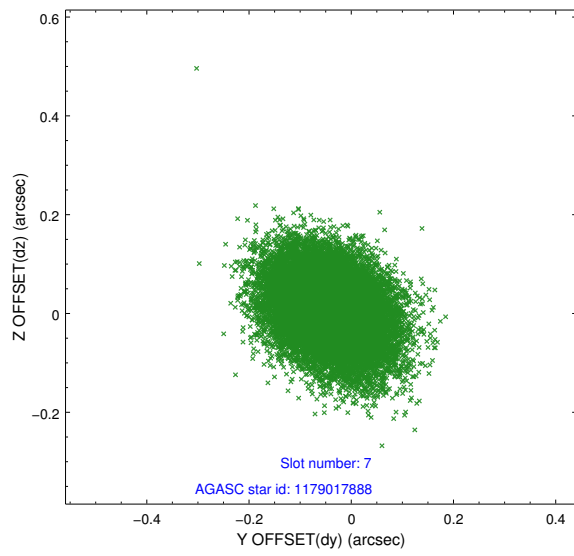
### 2.4.3 Slot 5



## 2.4.4 Slot 6

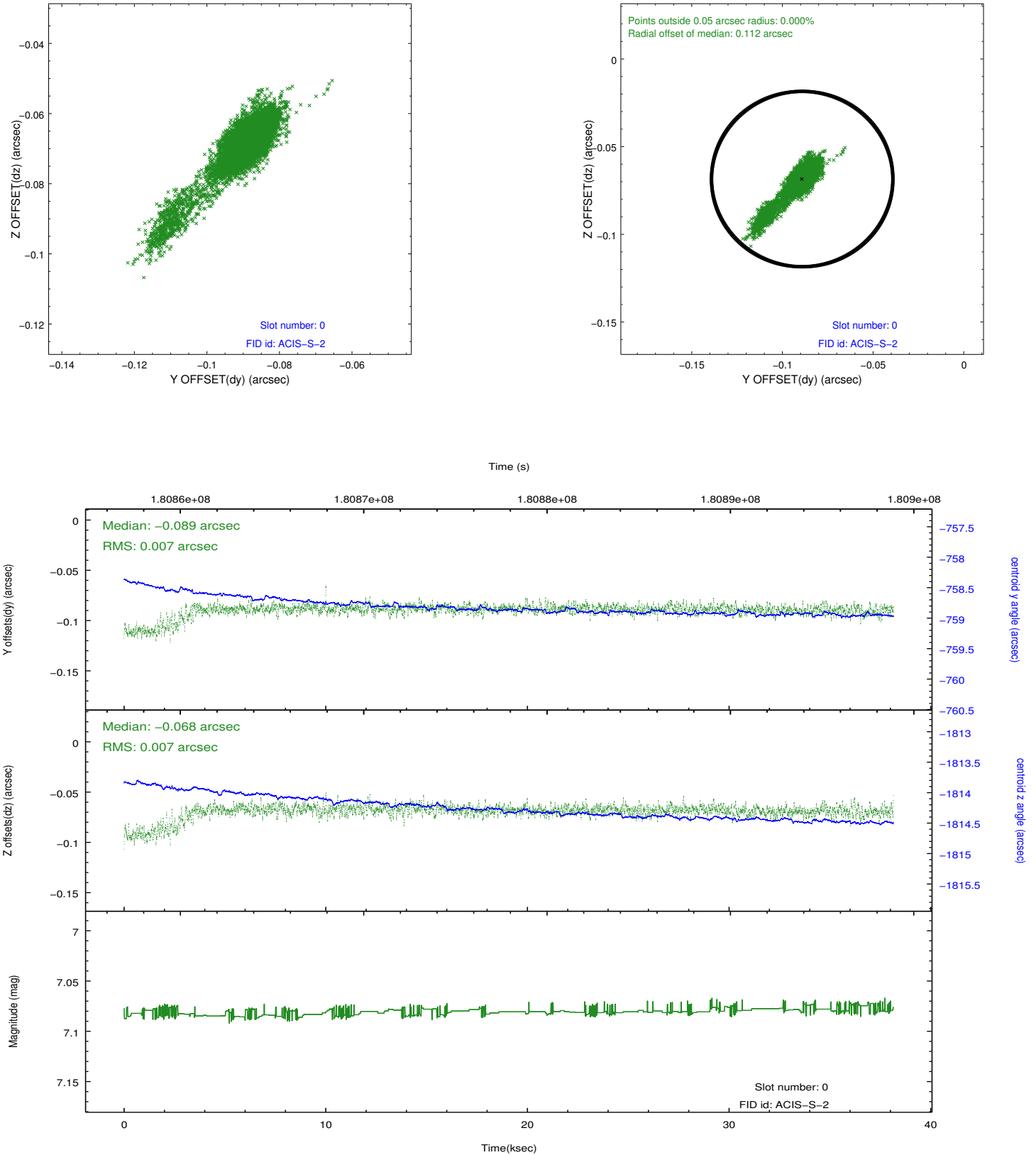


## 2.4.5 Slot 7

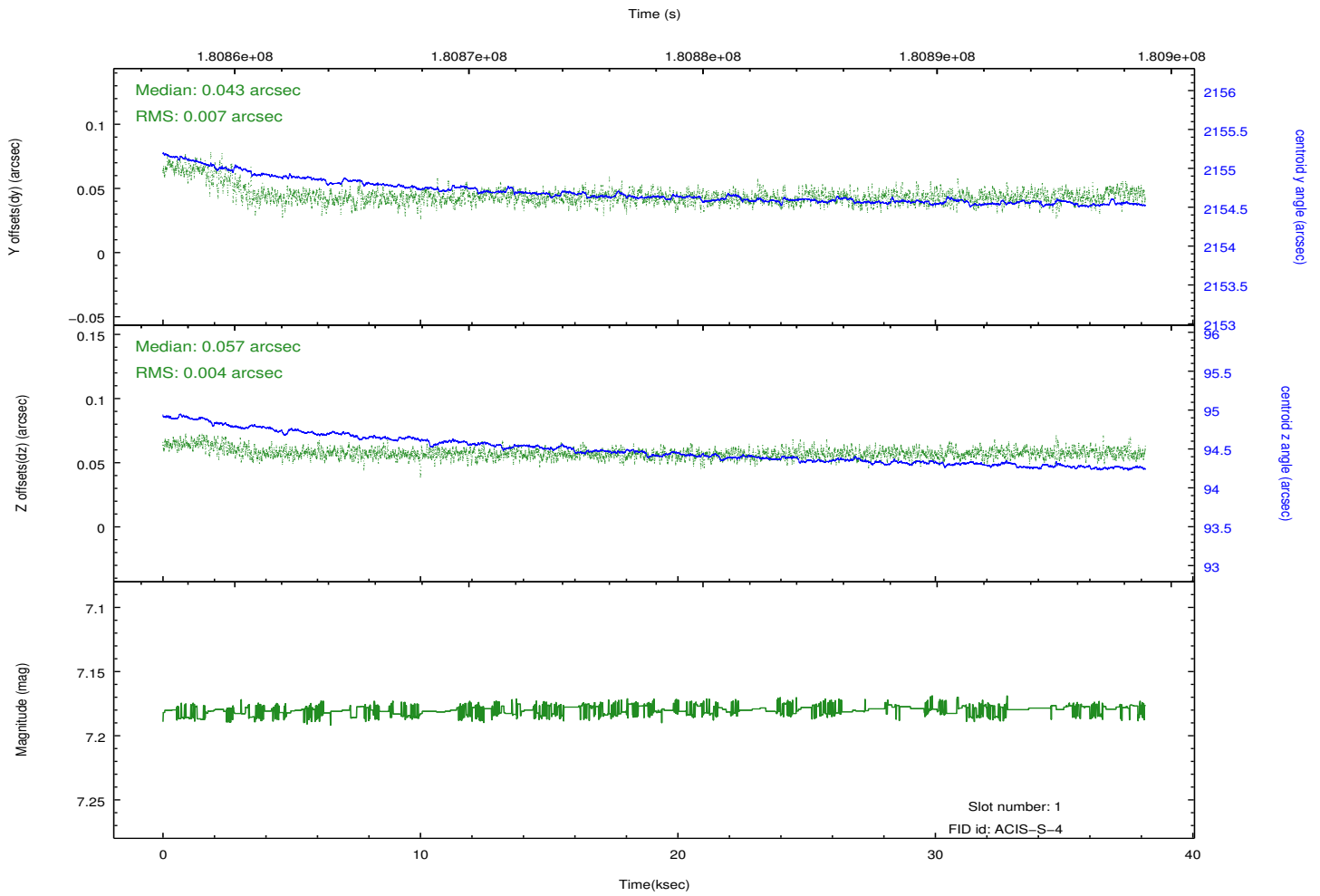
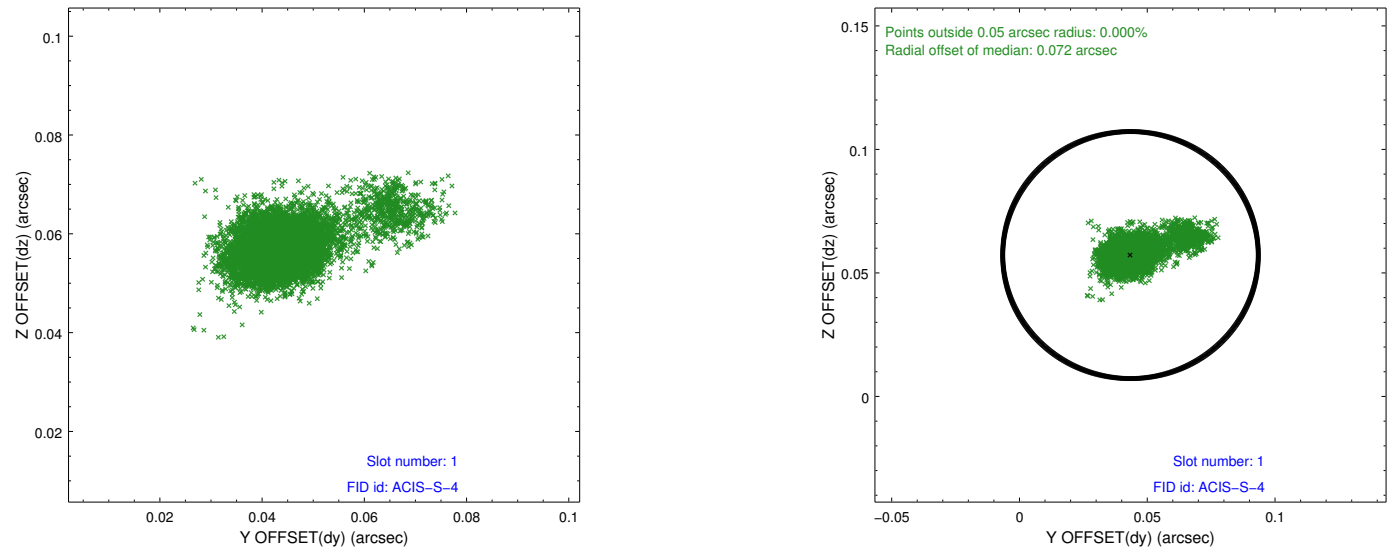


## 2.5 FID Slots

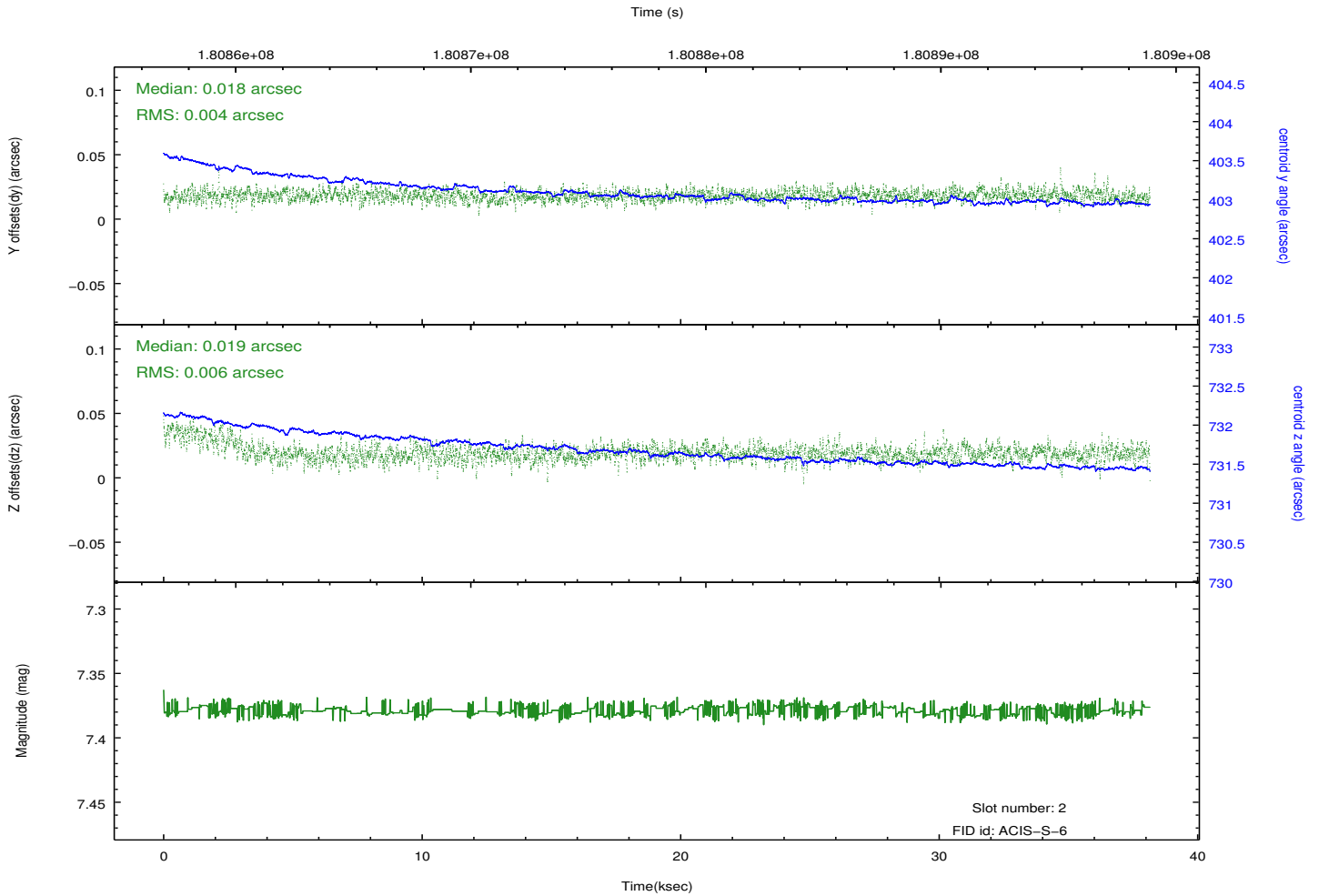
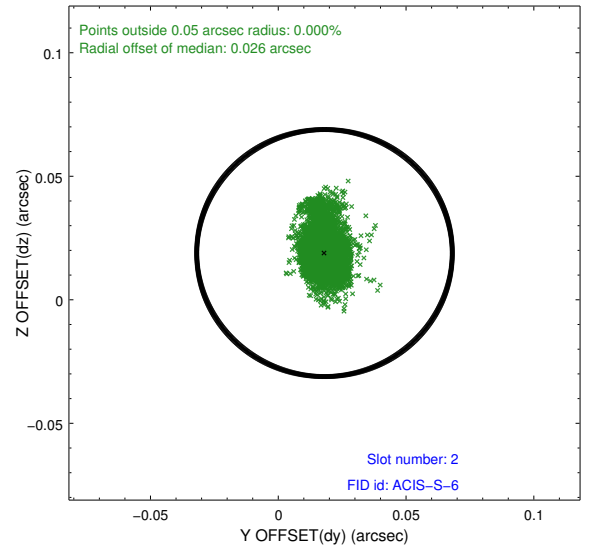
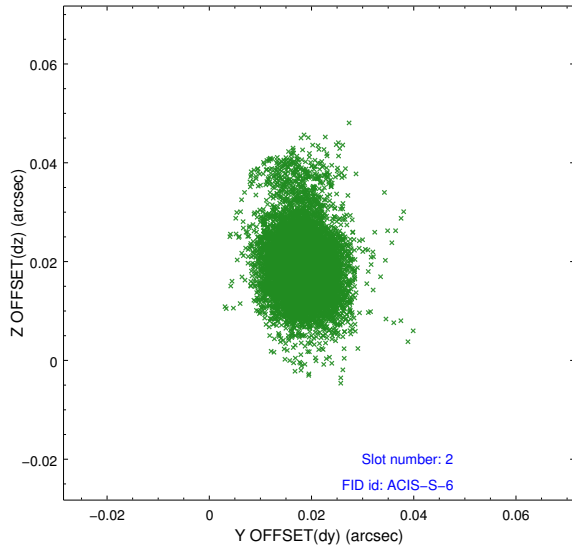
### 2.5.1 Slot 0



## 2.5.2 Slot 1

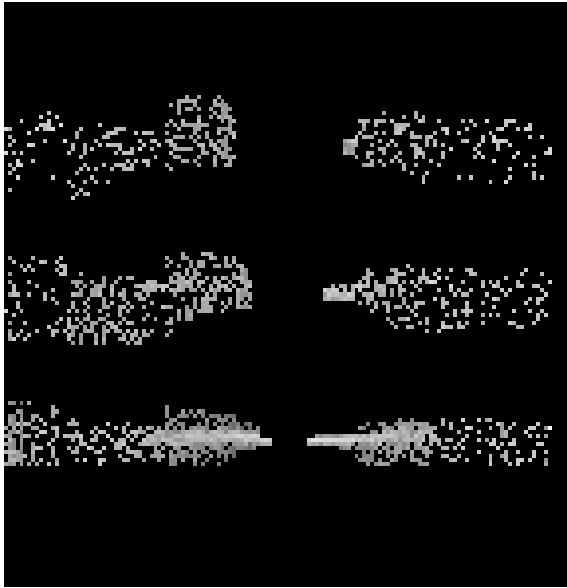


### 2.5.3 Slot 2

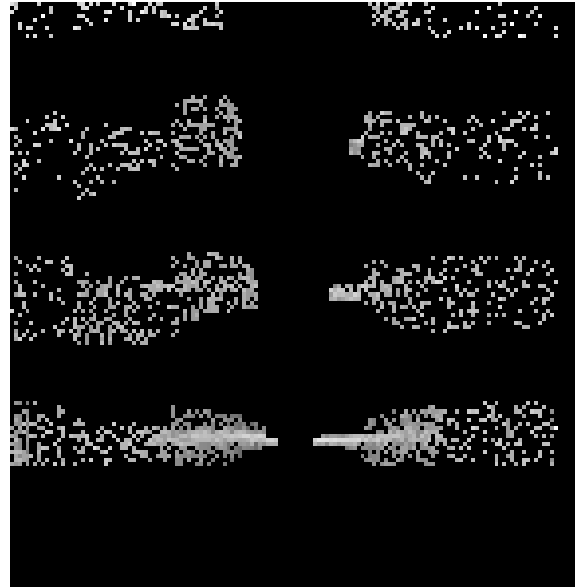


# 3 Gratings

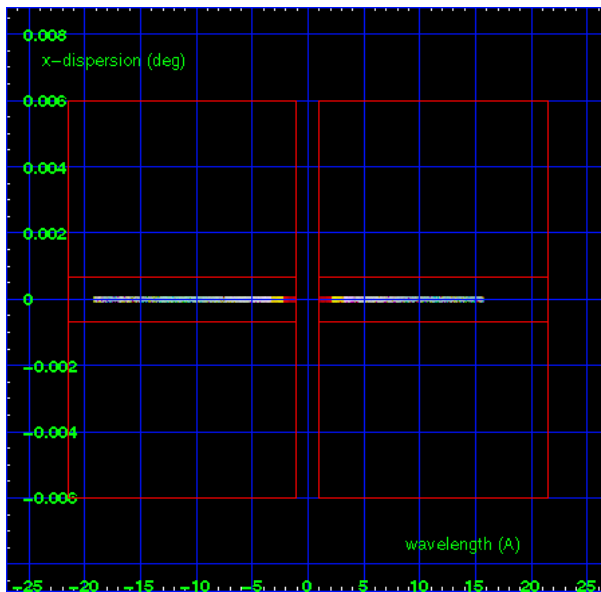
## 3.1 HEG Arm



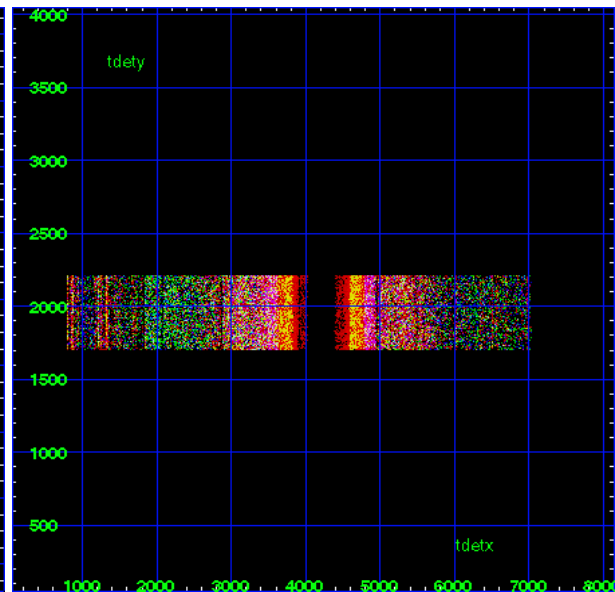
HEG Order Sort 123



HEG Order Sort ALL

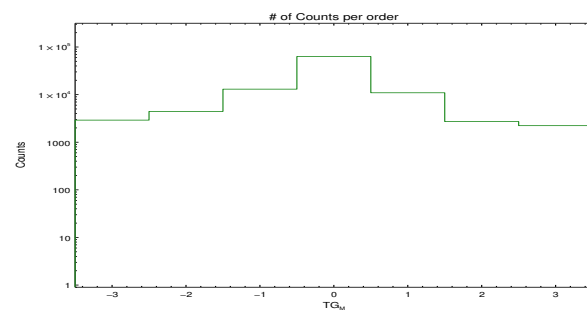


Spot Image HEG

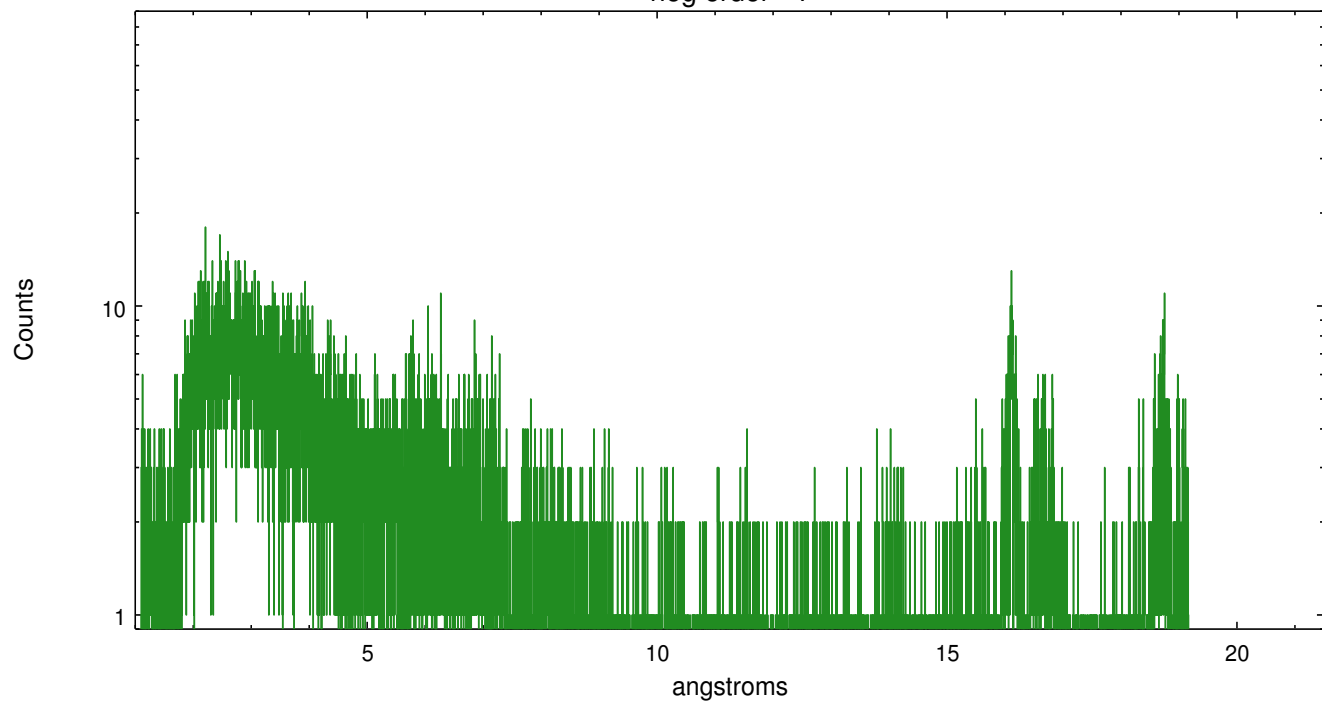


Full Detector HEG

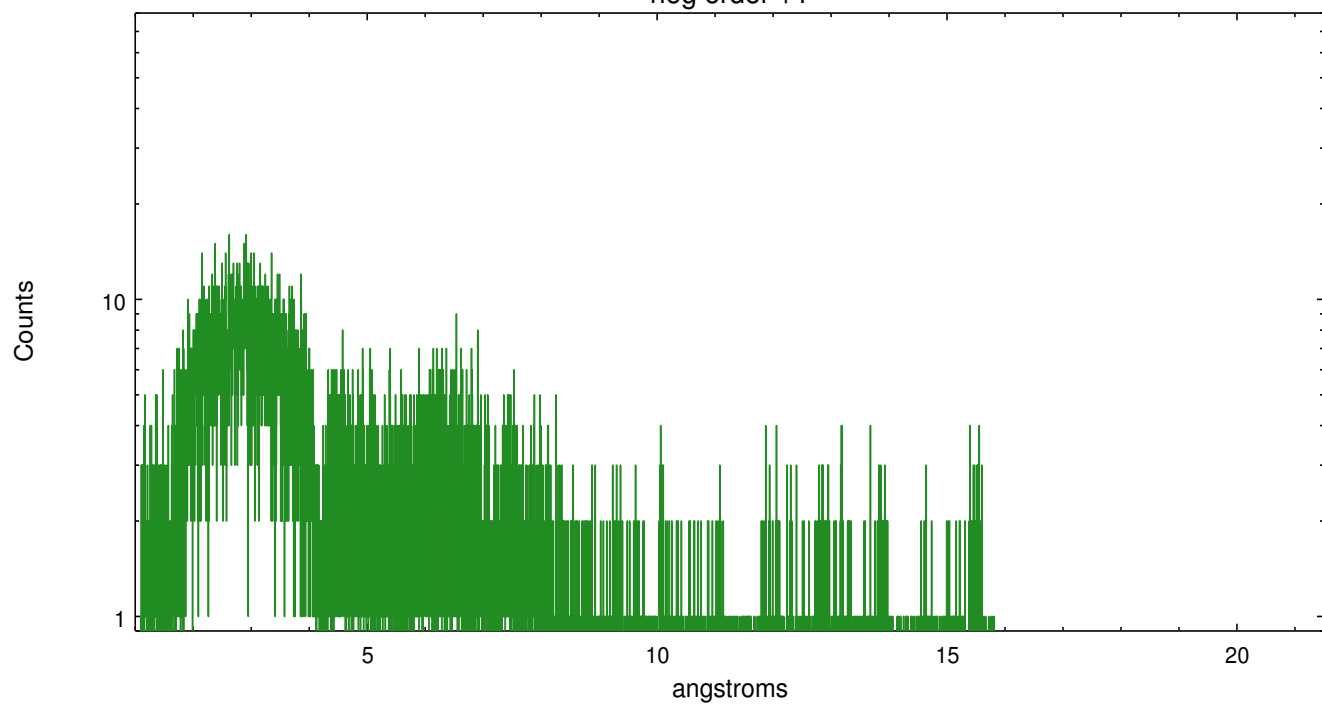
	order -3	order -2	order -1	order 0	order 1	order 2	order 3
Events	2911	4438	13016	63101	10940	2715	2231



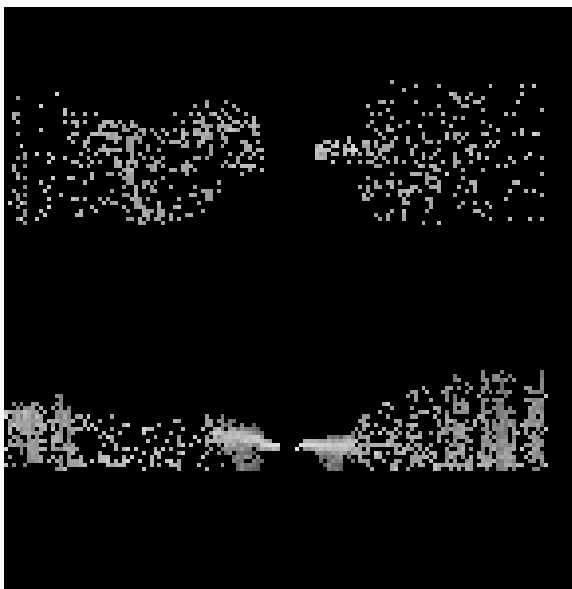
heg order -1



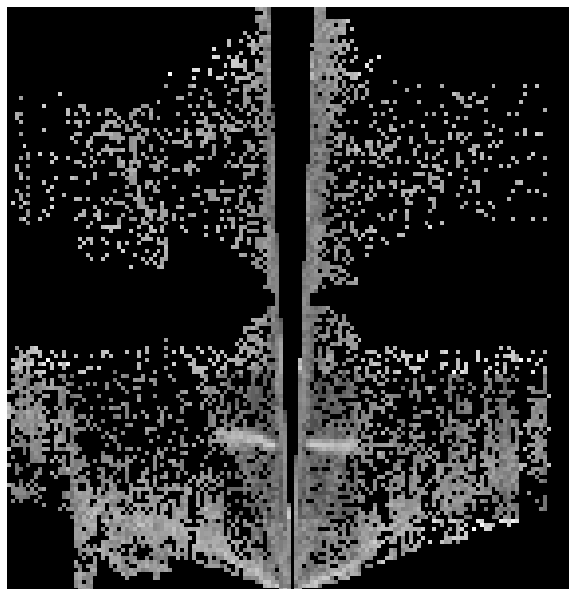
heg order +1



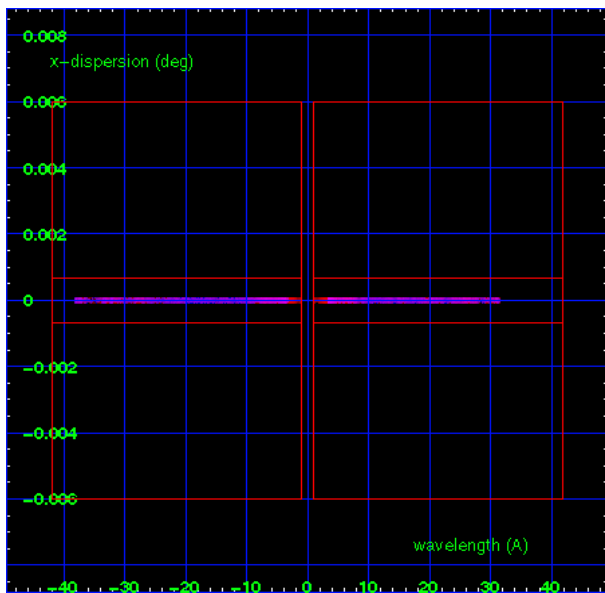
### 3.2 MEG Arm



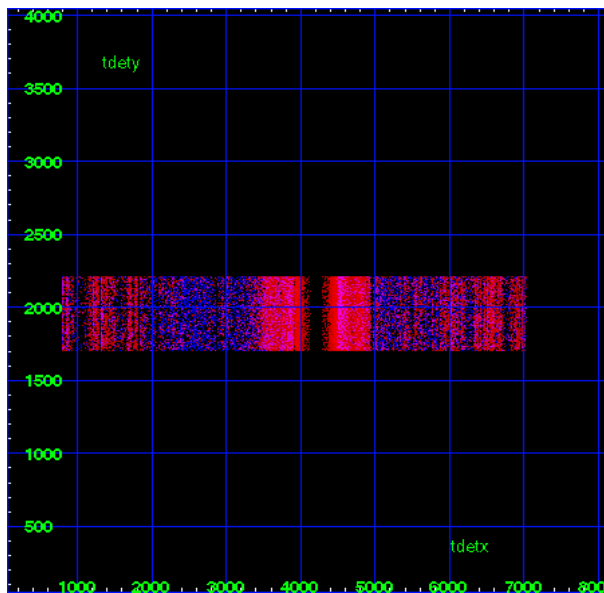
MEG Order Sort 123



MEG Order Sort ALL

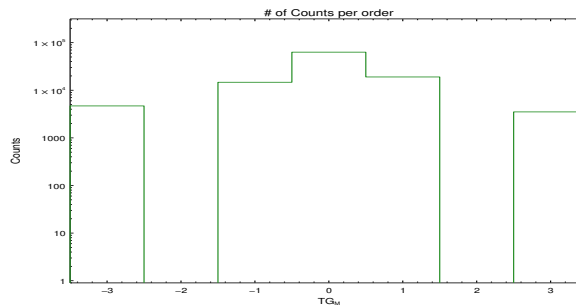


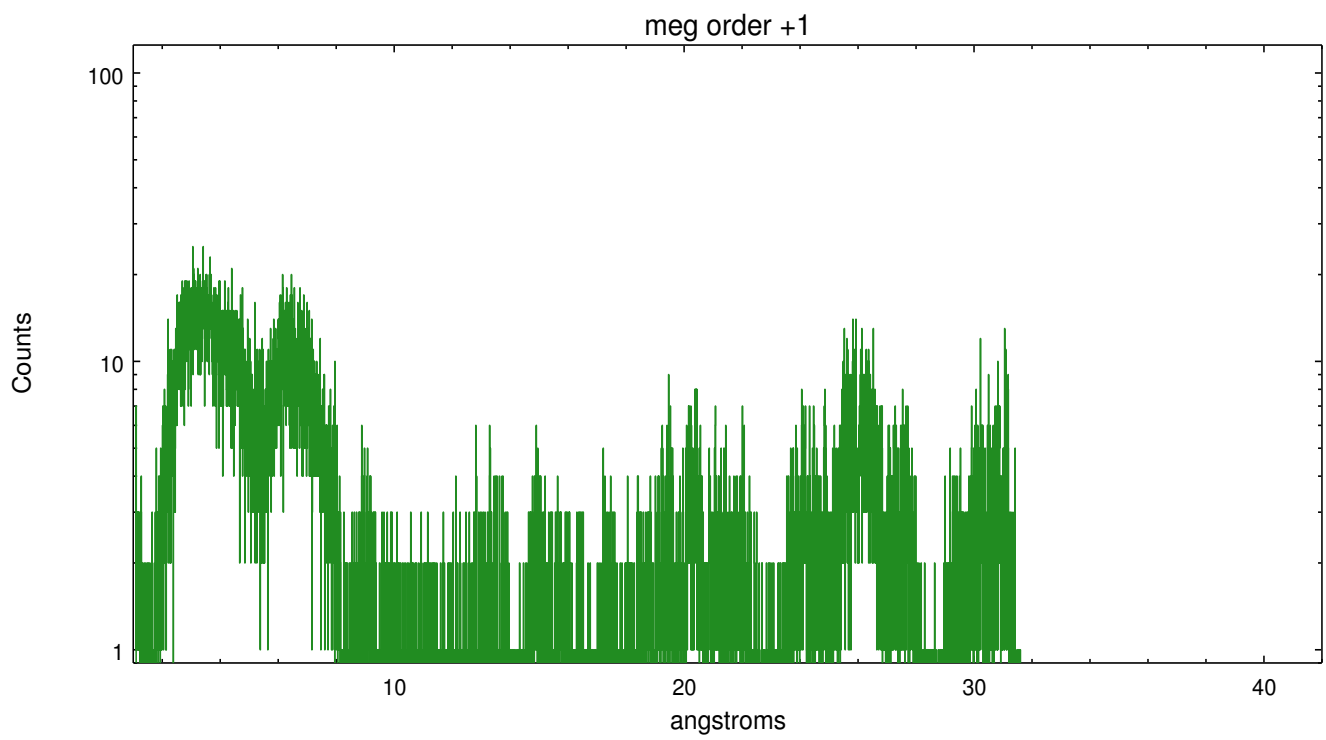
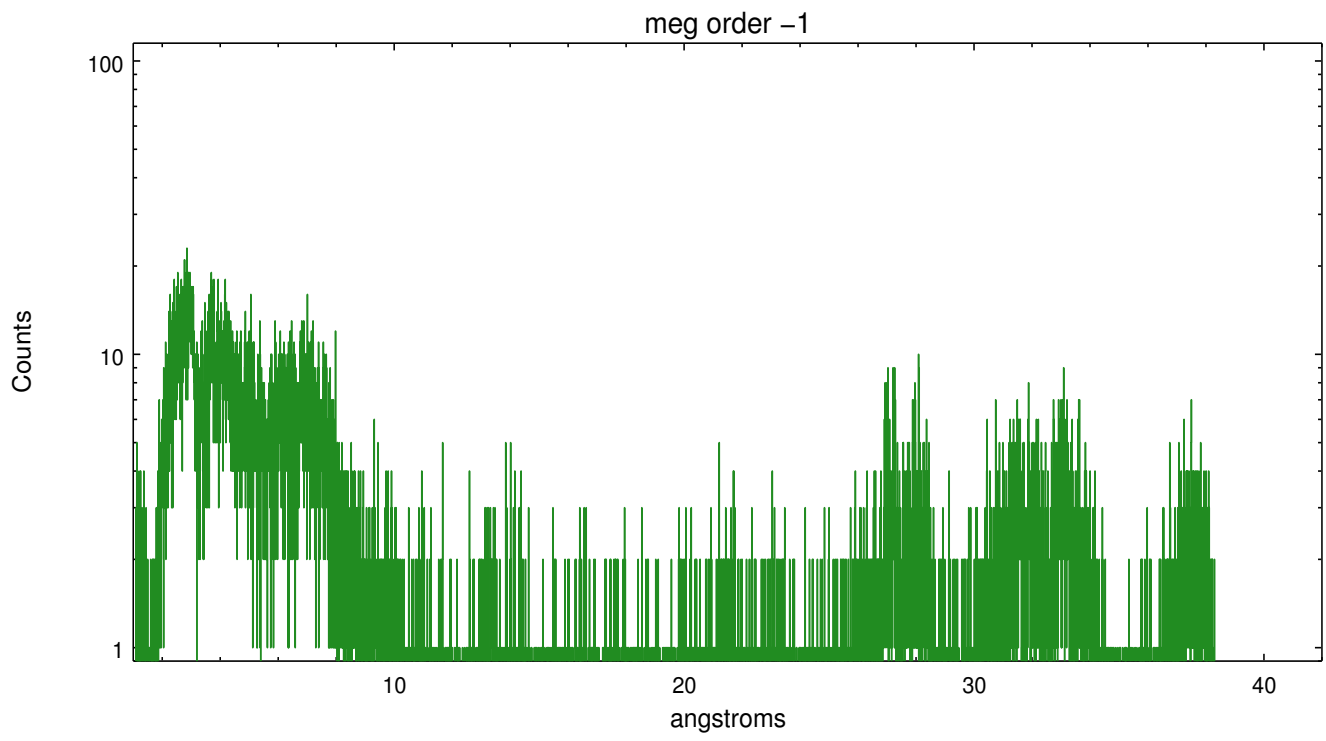
Spot Image MEG



Full Detector MEG

	order -3	order -2	order -1	order 0	order 1	order 2	order 3
Events	4690	0	14712	63101	19024	0	3512





# A Summary

## A.1 Status

V&V Scientist	David Huenemoerder
V&V Date (YYYY-MM-DD)	2012.12.17
V&V Edition	1
V&V Disposition and Status	OK
V&V Charge Time	38.161

## A.2 Comments