

V&V Reference Report

L2 ASCDS Version : 8.4.5

Observation 3906 - L2 Version 3
Chandra X-Ray Center

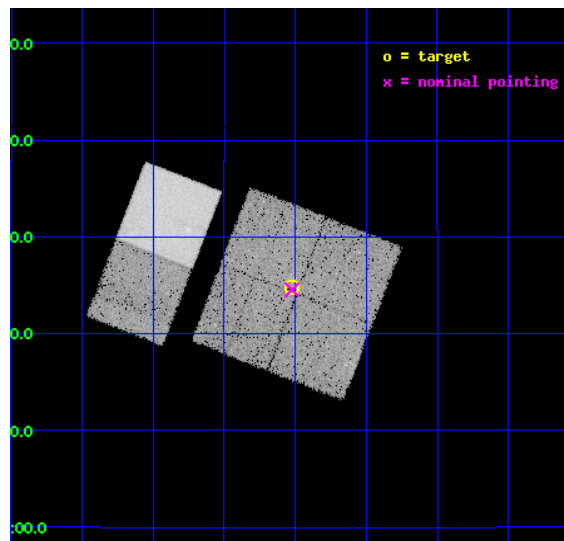
L2 Processing Date : Nov 10 2012

Contents

1	Front	2
2	OBI	3
2.1	OBI	3
2.1.1	Images	3
2.1.2	Bias	3
2.1.3	Parameters	4
2.1.4	Events	4
2.2	Compared Parameters	5
2.3	Aspect	6
2.4	Star Slots	9
2.4.1	Slot 3	9
2.4.2	Slot 4	10
2.4.3	Slot 5	11
2.4.4	Slot 6	12
2.4.5	Slot 7	13
2.5	FID Slots	14
2.5.1	Slot 0	14
2.5.2	Slot 1	15
2.5.3	Slot 2	16
A	Summary	17
A.1	Status	17
A.2	Comments	17

1 Front

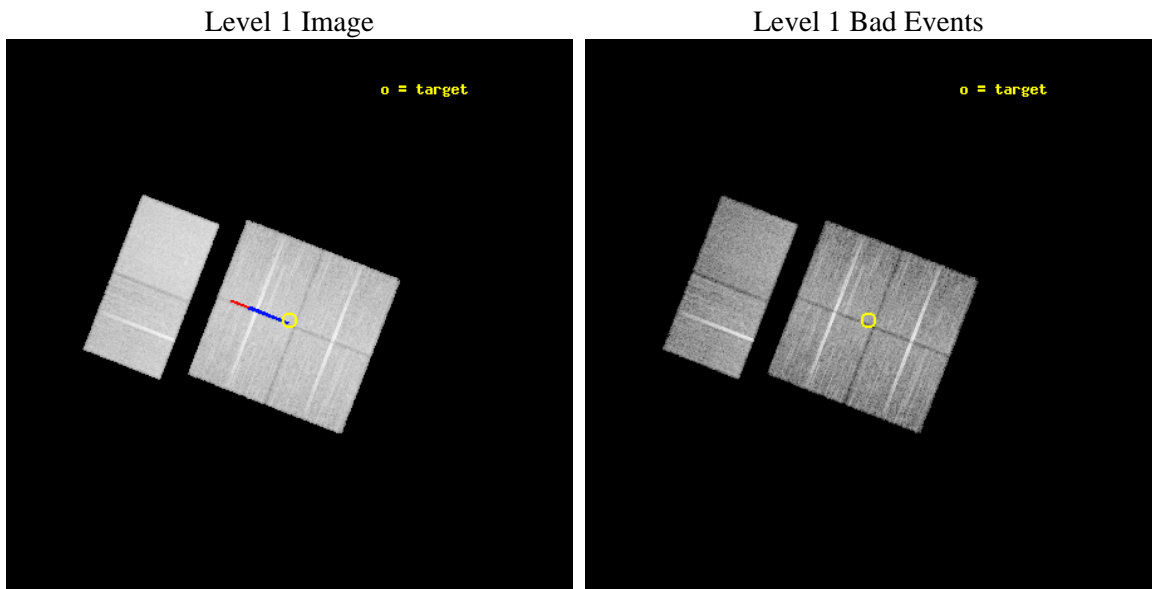
seq_num	500385	Sequence number
obs_id	3906	Observation id
title	THE ORIGIN OF X-RAY RICH GAMMA-RAY BURSTS: HIGH-Z EVENTS AND NEW COSMIC EXPLOSIONS	Proposal title
observer	Dr Luigi Piro	Principal investigator
object	GRB031220	Source name
dtcycle	0	
cycle	P	events from which exps? Prim/Second/Both
ra_targ	69.881083	Observer's specified target RA [deg]
dec_targ	7.413611	Observer's specified target Dec [deg]
ra_nom	69.880927734203	Nominal RA [deg]
dec_nom	7.4089892787861	Nominal Dec [deg]
roll_nom	291.20870618158	Nominal Roll [deg]
revision	3	Processing version of data
ontime	19660.799926758	Sum of GTIs [s]
liveltime	19411.843039773	Livetime [s]
ontime0	19660.799926758	Sum of GTIs [s]
ontime1	19660.799926758	Sum of GTIs [s]
ontime2	19660.799926758	Sum of GTIs [s]
ontime3	19660.799926758	Sum of GTIs [s]
ontime6	19660.799926758	Sum of GTIs [s]
ontime7	19660.799926758	Sum of GTIs [s]
l2events	154750	Number of level 2 events



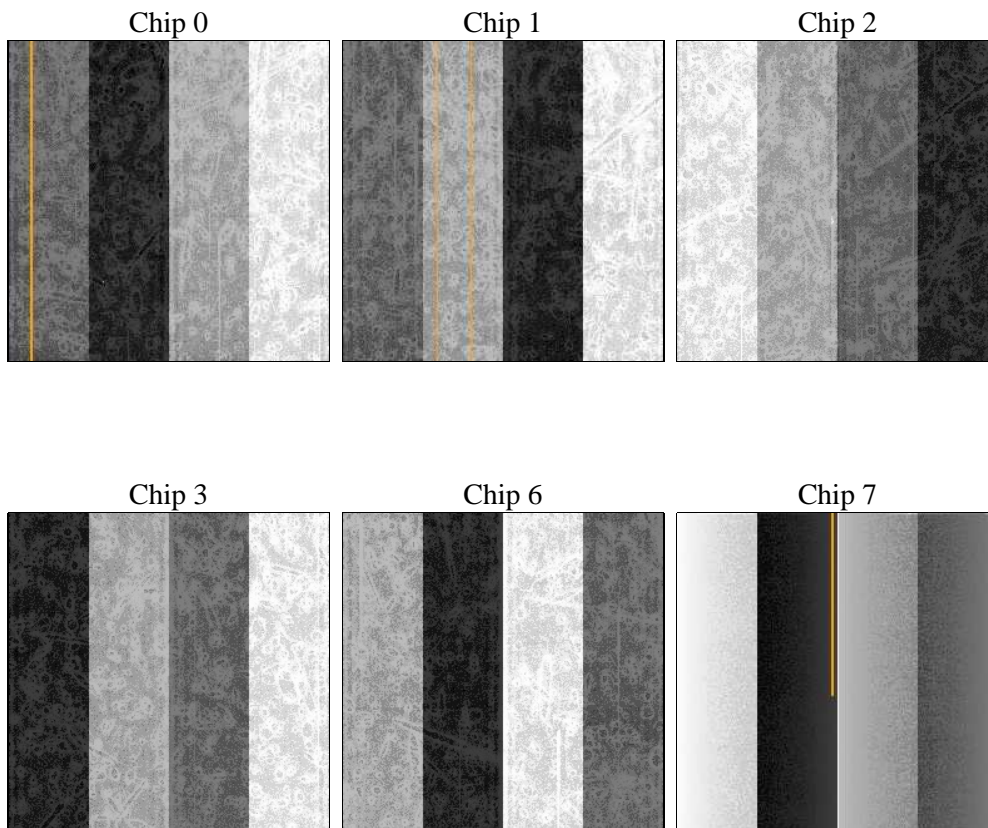
2 OBI

2.1 OBI

2.1.1 Images



2.1.2 Bias



2.1.3 Parameters

obi_num	1	Obi number	sched_exp_time	19521.529000	[s] Scheduled observation exposure time
ascdsver	8.4.5	Processing system revision	ontime	19660.799926758	Sum of GTIs [s]
caldbver	4.5.2	 	ontime0	19660.799926758	Sum of GTIs [s]
date	2012-11-10T22:21:08	Date and time of file creation	ontime1	19660.799926758	Sum of GTIs [s]
revision	3	Processing version of data	ontime2	19660.799926758	Sum of GTIs [s]
			ontime3	19660.799926758	Sum of GTIs [s]
			ontime6	19660.799926758	Sum of GTIs [s]
			ontime7	19660.799926758	Sum of GTIs [s]
			l1events	868340	Number of level 1 events

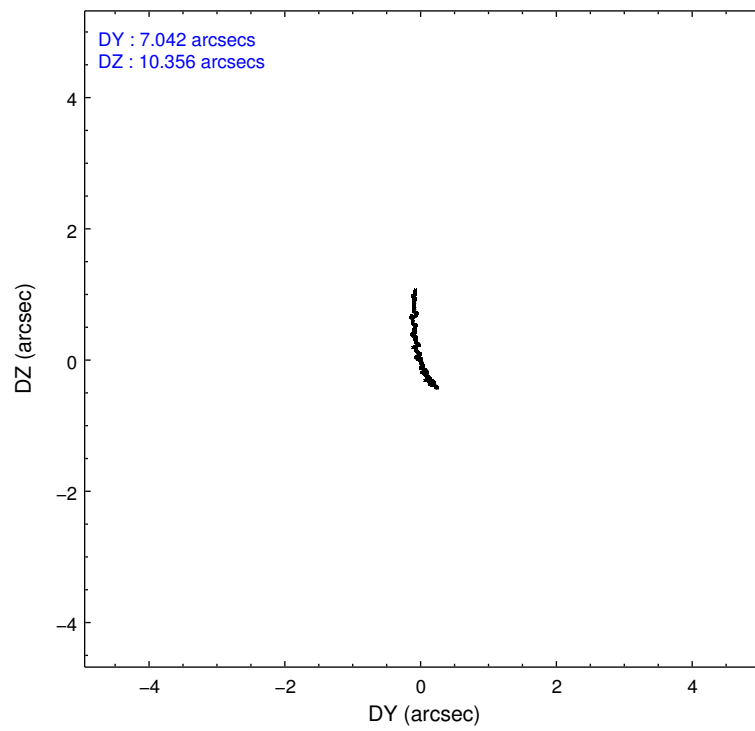
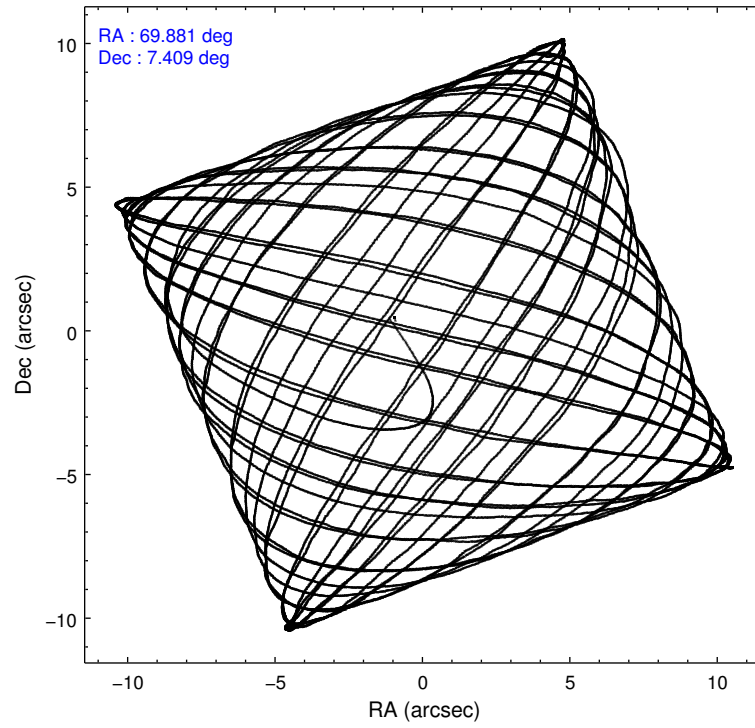
2.1.4 Events

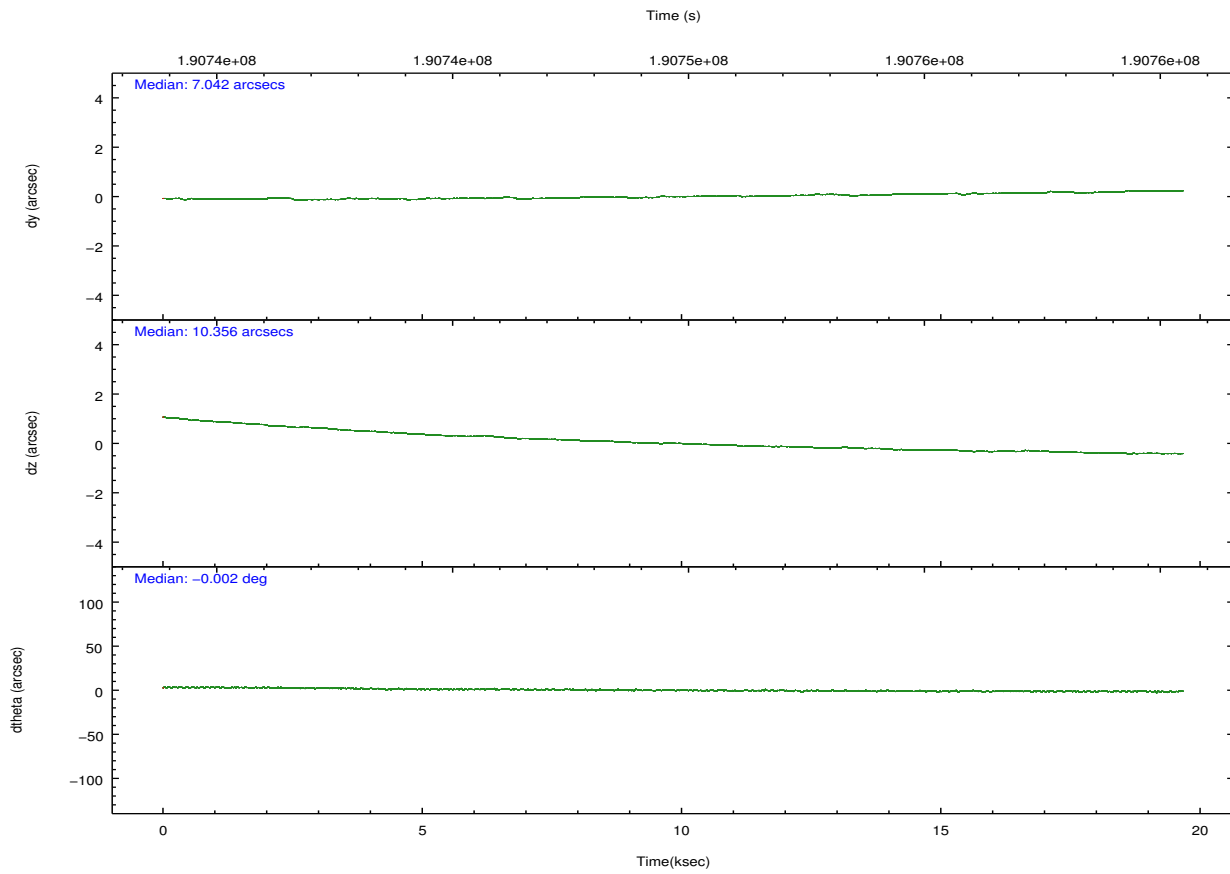
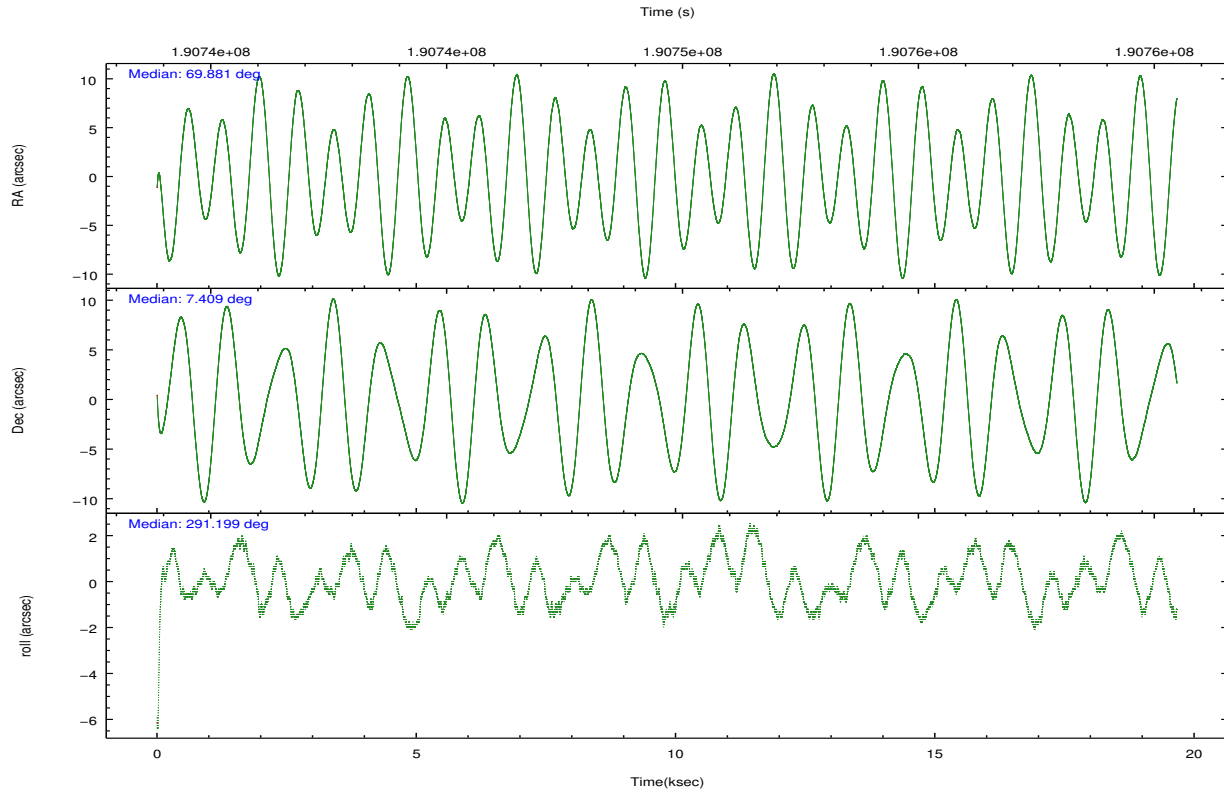
	ccd 0	ccd 1	ccd 2	ccd 3	ccd 6	ccd 7		ccd 0	ccd 1	ccd 2	ccd 3	ccd 6	ccd 7
level 1 events	126377	130579	134850	134052	142933	199549	grade 0 events	9095	7831	8309	8477	8255	8312
rejected events	108571	113352	118514	117484	125579	117524		7%	5%	6%	6%	5%	4%
rejected %	85%	86%	87%	87%	87%	58%	grade 1 events	92	63	73	78	62	206
								0%	0%	0%	0%	0%	0%
							grade 2 events	3850	3989	3394	3395	3884	17377
								3%	3%	2%	2%	2%	8%
							grade 3 events	1676	1813	1610	1608	1627	7614
								1%	1%	1%	1%	1%	3%
							grade 4 events	1590	1764	1633	1635	1664	7717
								1%	1%	1%	1%	1%	3%
							grade 5 events	5566	5819	5331	6234	6437	17654
								4%	4%	3%	4%	4%	8%
							grade 6 events	3101	3358	2868	2886	3493	49255
								2%	2%	2%	2%	2%	24%
							grade 7 events	101407	105942	111632	109739	117511	91414
								80%	81%	82%	81%	82%	45%

2.2 Compared Parameters

Parameter	Planned	Actual	Parameter	Planned	Actual
Instrument	ACIS	ACIS	Obspar format version number	7	7
Detector	ACIS-012367	ACIS-012367	Obspar file type	PREDICTED	ACTUAL
Grating	NONE	NONE	Obspar update status	NONE	UPDATED
Data mode	FAINT	FAINT	Number of optional ACIS chips dropped	0	0
Observation mode	POINTING	POINTING	On-chip summing requested	N	N
[deg] Pointing RA	69.859343	69.88092773420333	Subarray requested	NONE	NONE
[deg] Pointing Dec	7.426050	7.408989278786096	Alternating exposures requested	N	N
[deg] Pointing Roll	291.002814	291.2087061815763	[s] Primary exposure time	0.000000	3.2
[deg] Roll angle	290.000000	290.000000			
[deg] Roll tolerance	1.000000	1.000000			
Roll constraint allows 180D rotation	N	N			
[mm] SIM focus pos	-0.782348	-0.7809083437167272			
[mm] SIM defocus	0	0.001439871863259334			
[mm] SIM translation stage pos	-233.592463	-233.5874344608287			
[mm] SIM translation stage offset	0	-0.005018542100998502			
[s] Observation start time (MET)	190739988.184000	190738008.58546			
Observation start date	2004-01-17T15:18:44	2004-01-17T14:46:48			
[s] Observation end time (MET)	190759509.184000	190759823.66142			
Observation end date	2004-01-17T20:44:05	2004-01-17T20:50:23			
Read mode	TIMED	TIMED			

2.3 Aspect



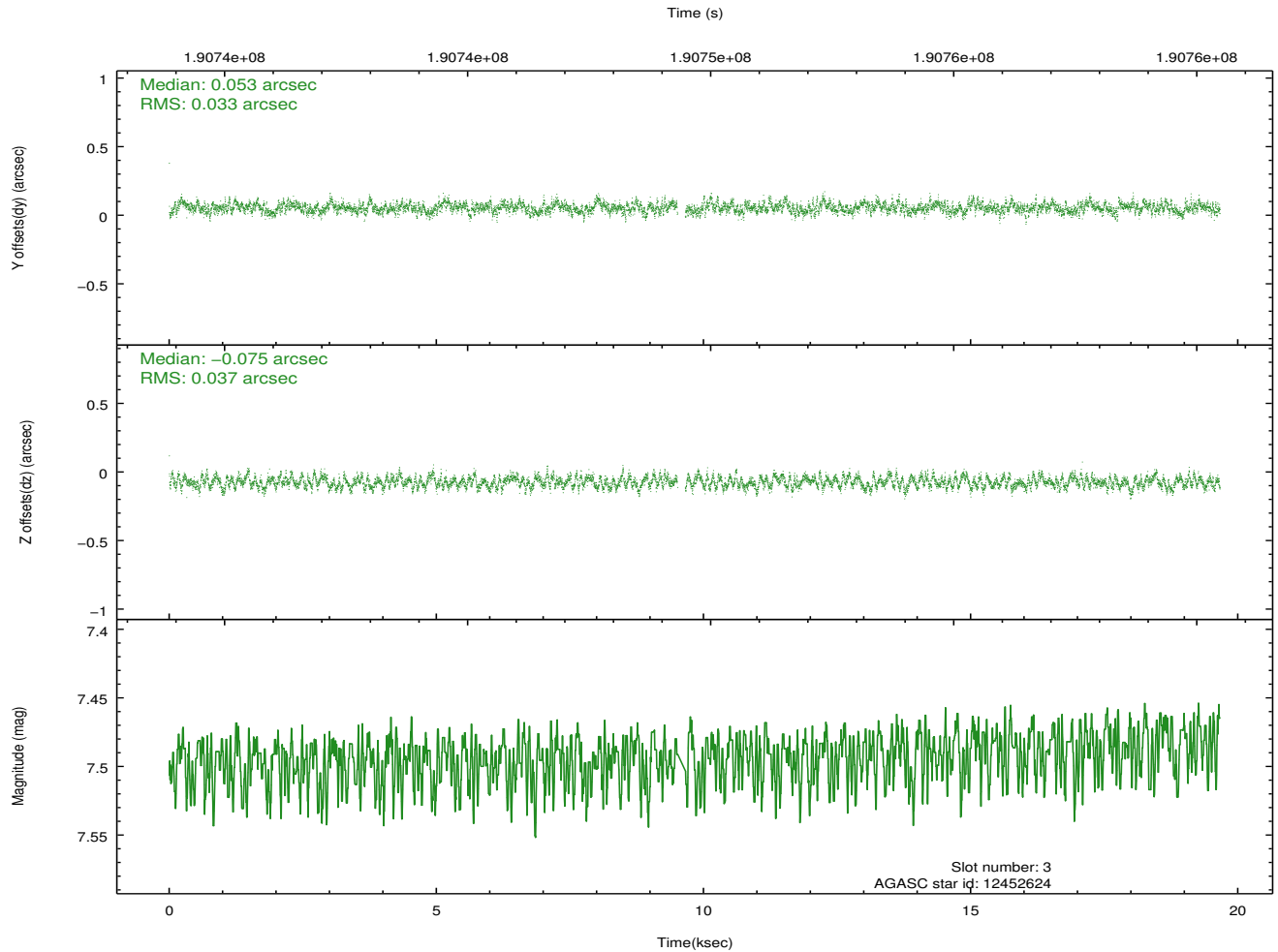
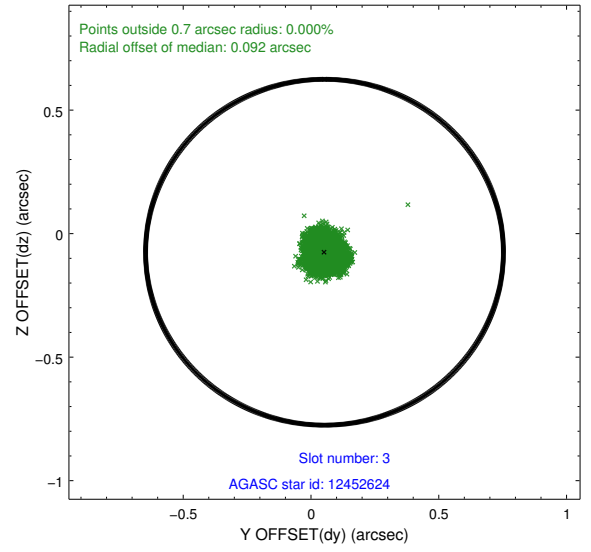
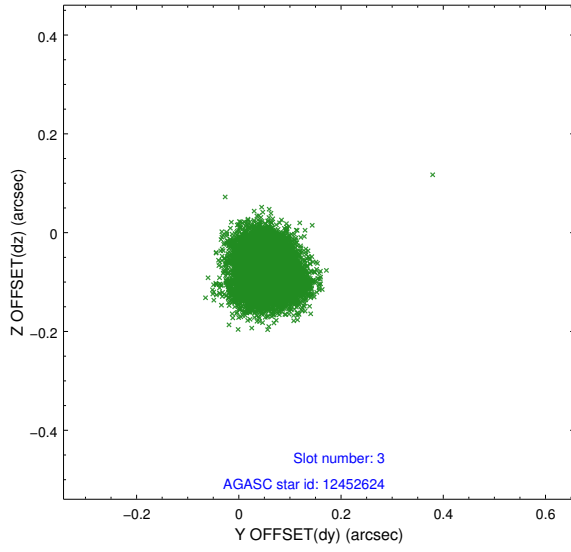


Slot Statistics

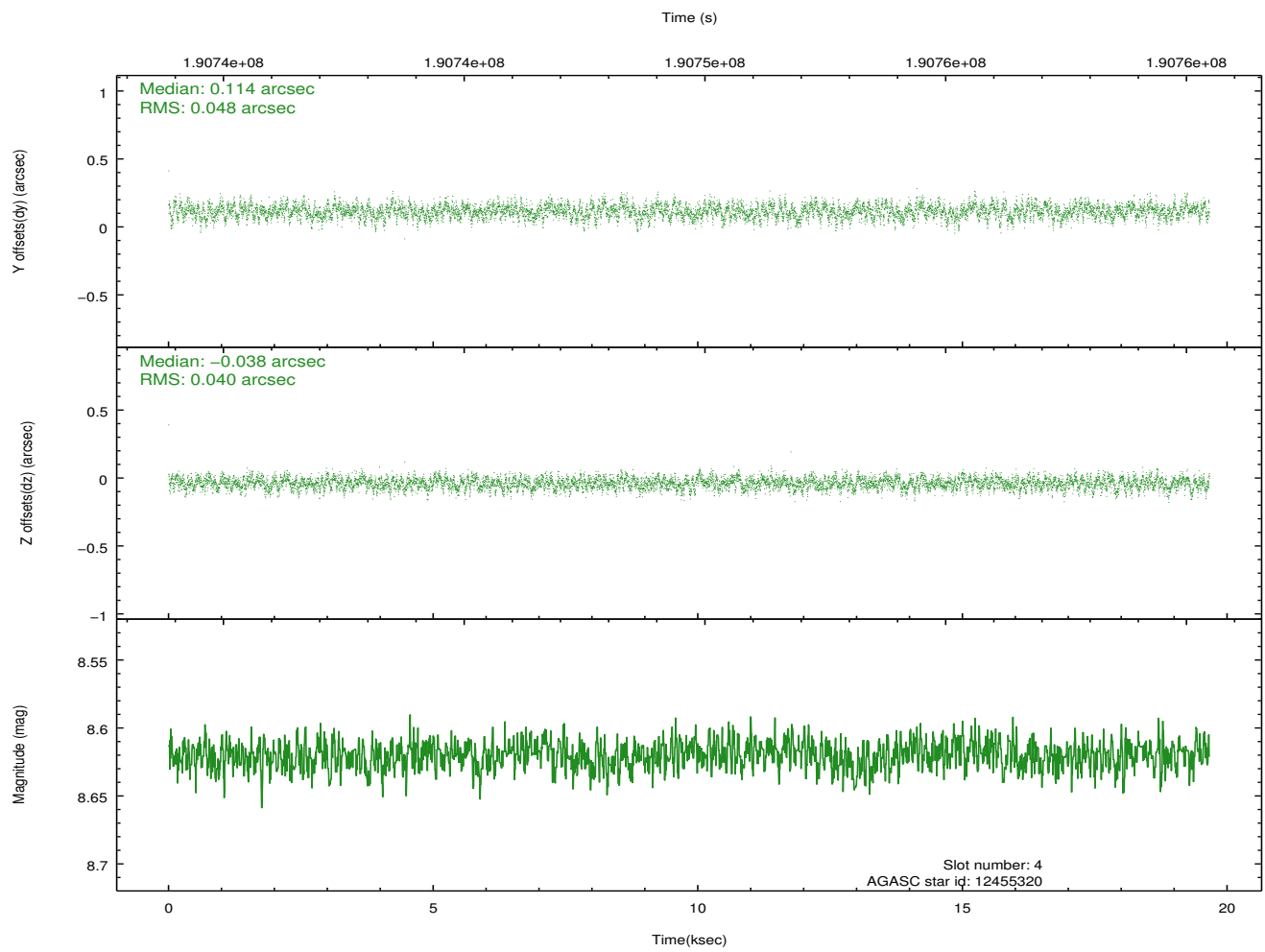
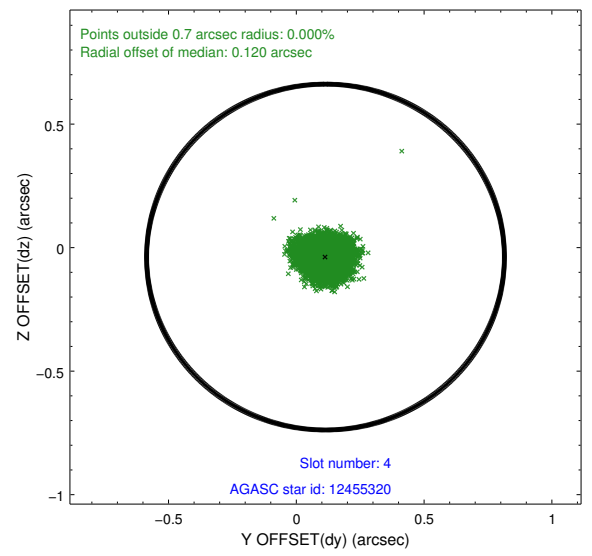
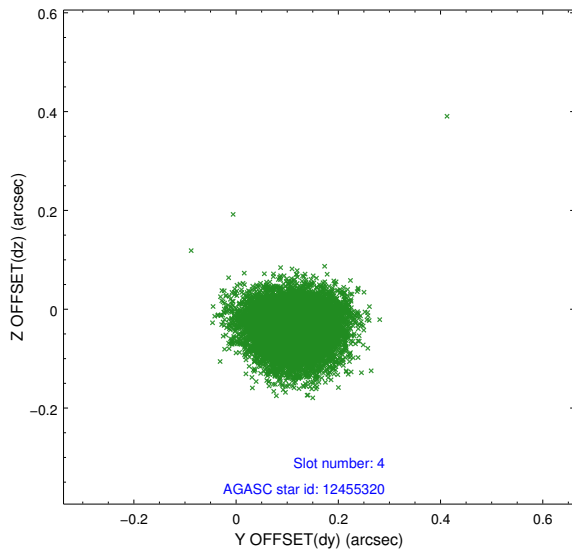
slot	status	id	mag	n_pts	med_dy	med_dz	dr1	dr2	ra	dec	mean_y	mean_z
0	FID	ACIS-I-1	7.24	4797	0.006	0.010	0.017	0.031	0.000000	0.000000	932.62	-833.93
1	FID	ACIS-I-5	7.23	4797	-0.137	0.033	0.010	0.020	0.000000	0.000000	-1815.51	1063.51
2	FID	ACIS-I-6	7.25	4796	0.038	0.027	0.013	0.021	0.000000	0.000000	398.01	1708.21
3	GUIDE	12452624	7.49	9523	0.053	-0.075	0.052	0.083	69.476403	7.317631	-125.59	-1415.98
4	GUIDE	12455320	8.62	9591	0.114	-0.038	0.066	0.106	69.662131	6.874787	1600.79	-1368.85
5	GUIDE	89403544	7.89	9527	-0.033	0.056	0.045	0.074	69.809992	7.987097	-1948.26	559.62
6	GUIDE	12331072	8.68	9591	-0.086	0.080	0.070	0.114	69.220131	7.248777	-223.42	-2358.85
7	GUIDE	89400656	8.85	9592	-0.041	-0.020	0.083	0.130	70.426351	7.827138	-624.56	2405.82

2.4 Star Slots

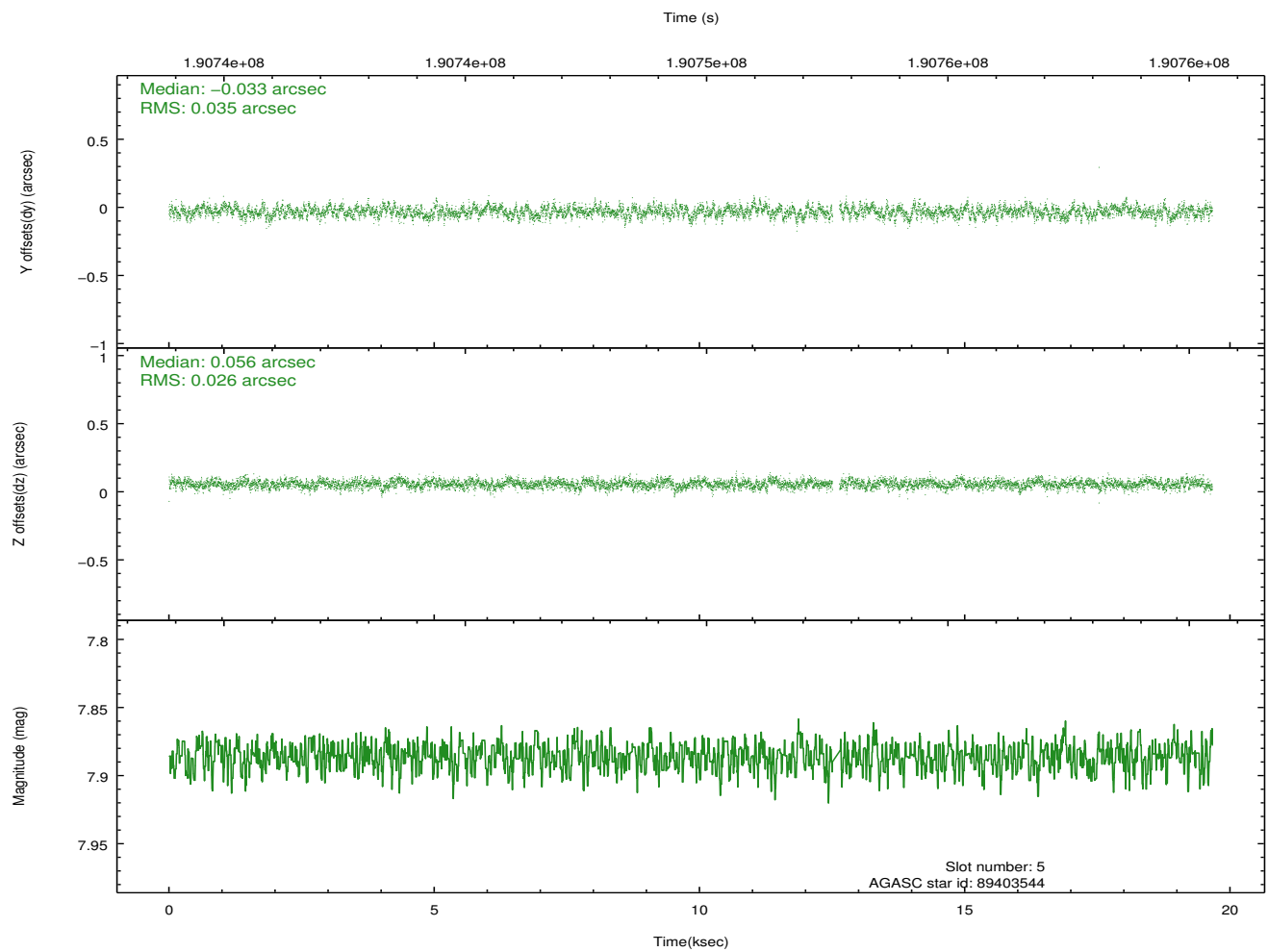
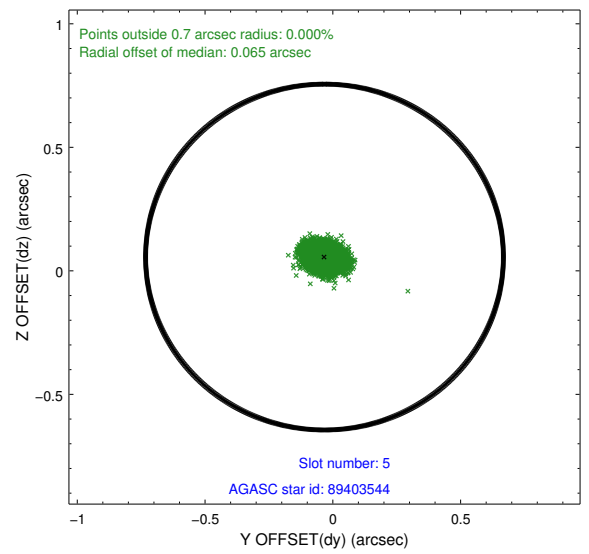
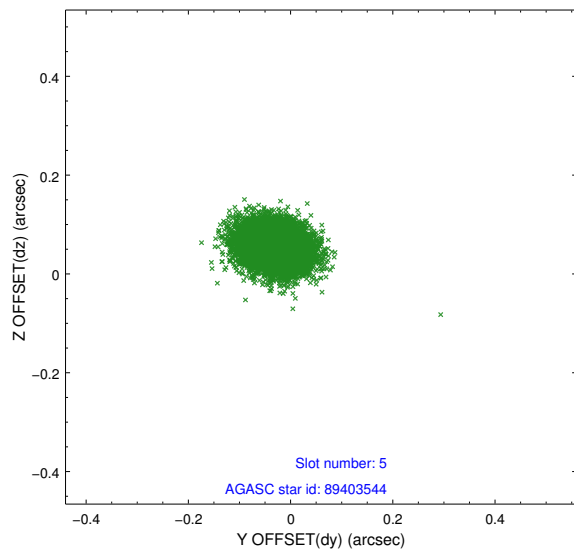
2.4.1 Slot 3



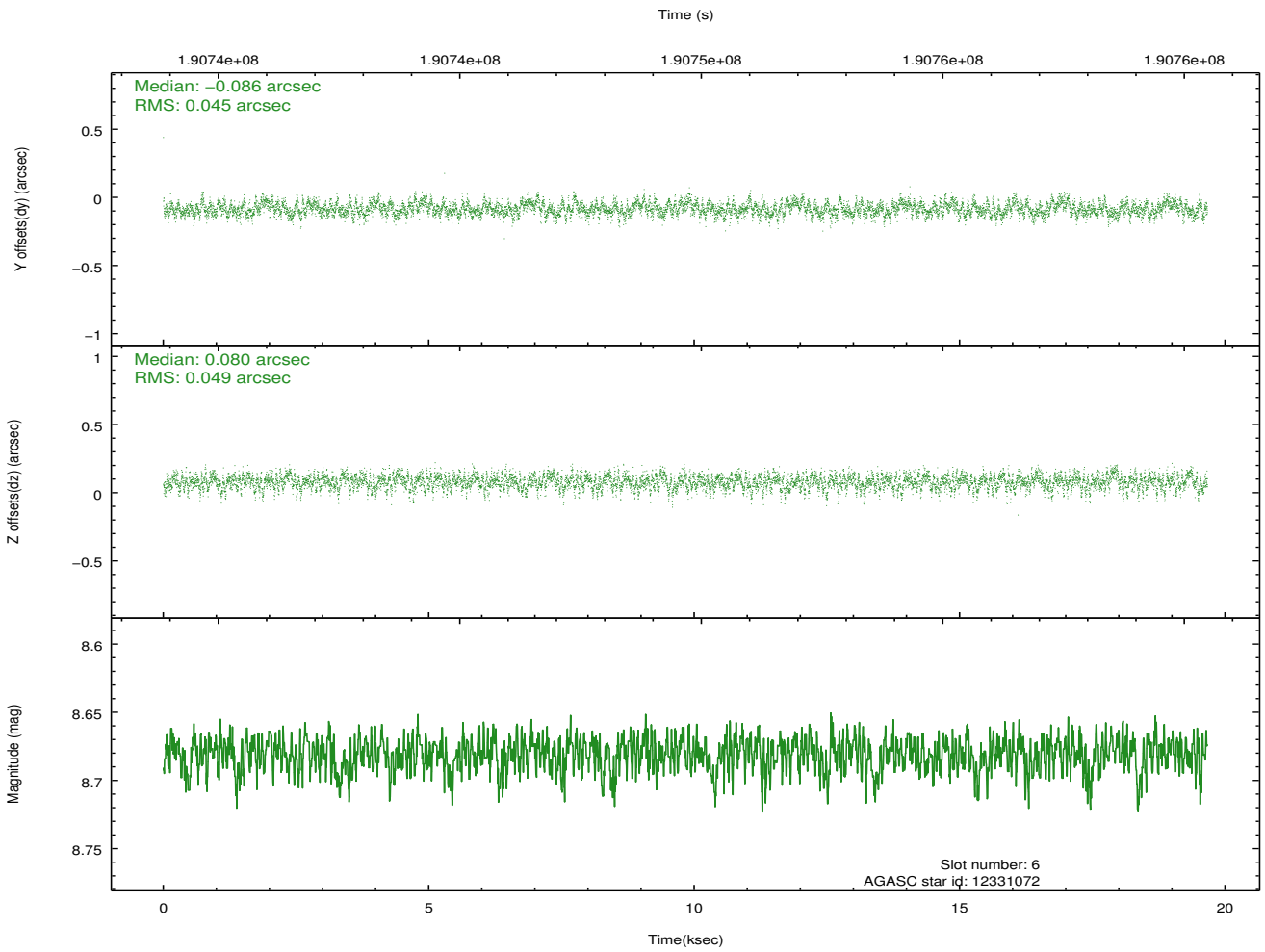
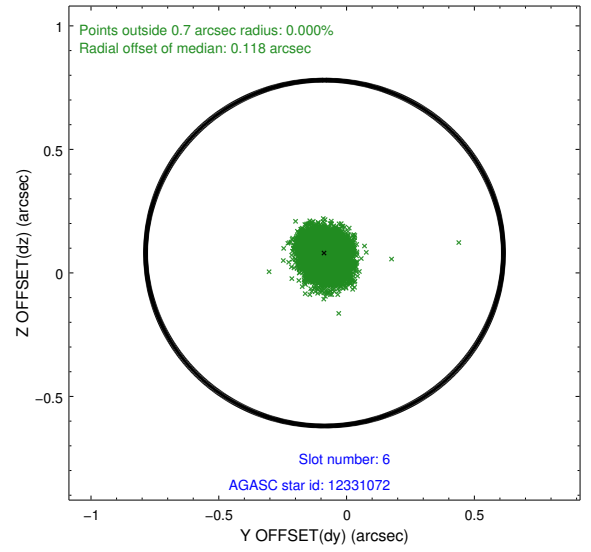
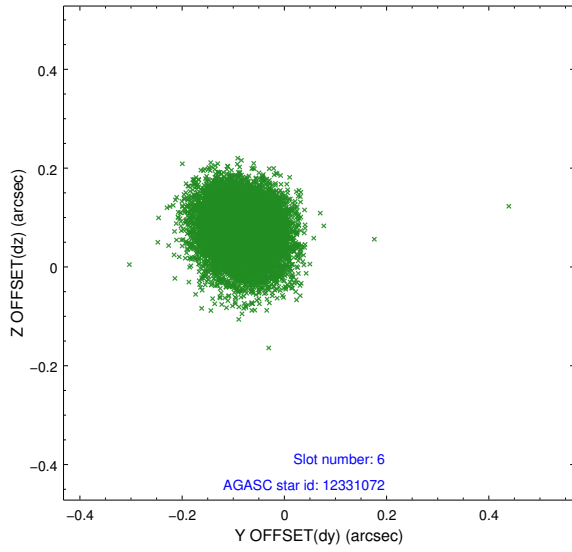
2.4.2 Slot 4



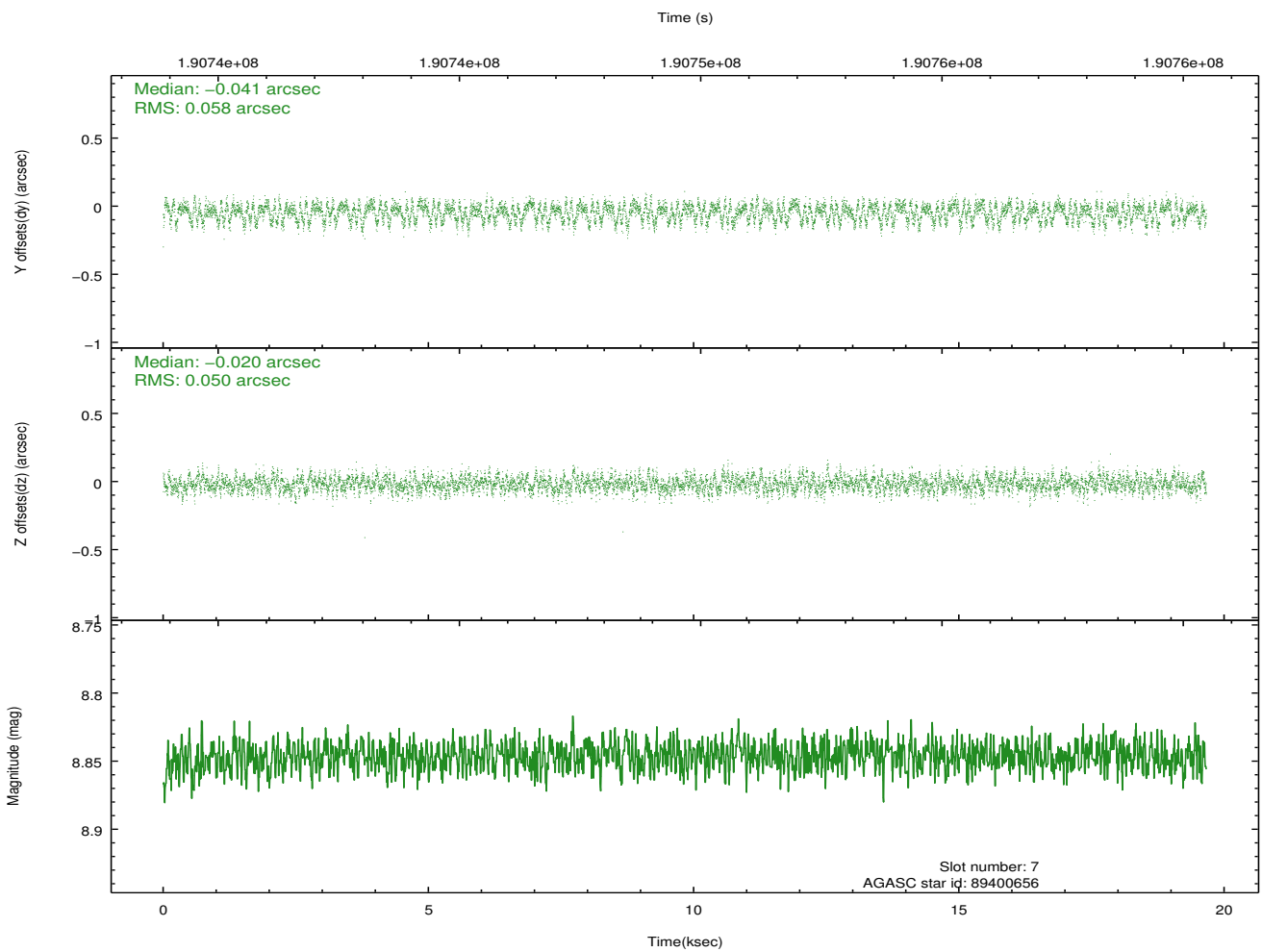
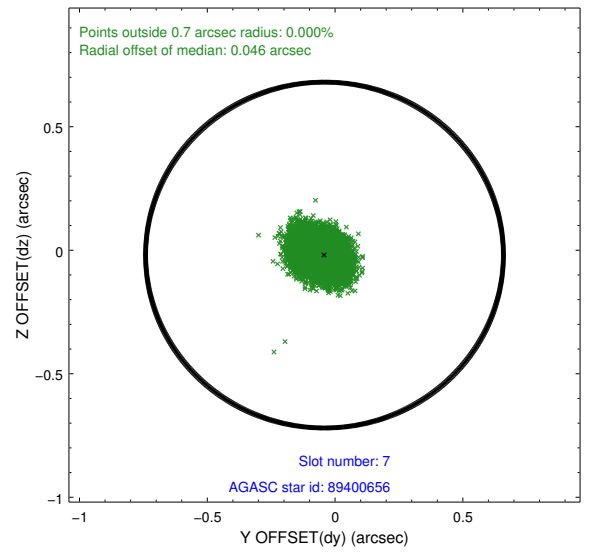
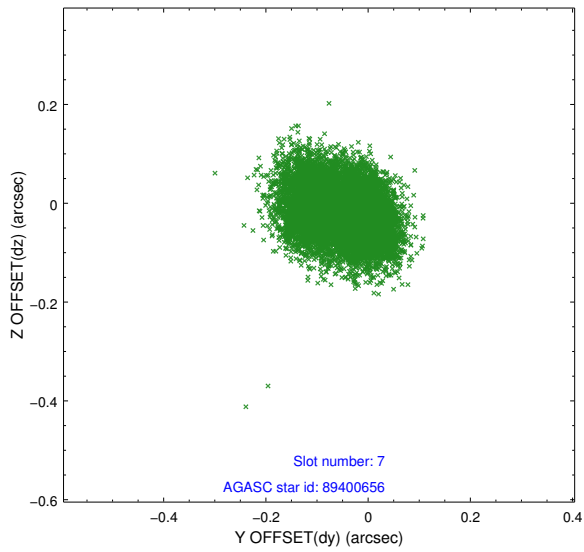
2.4.3 Slot 5



2.4.4 Slot 6

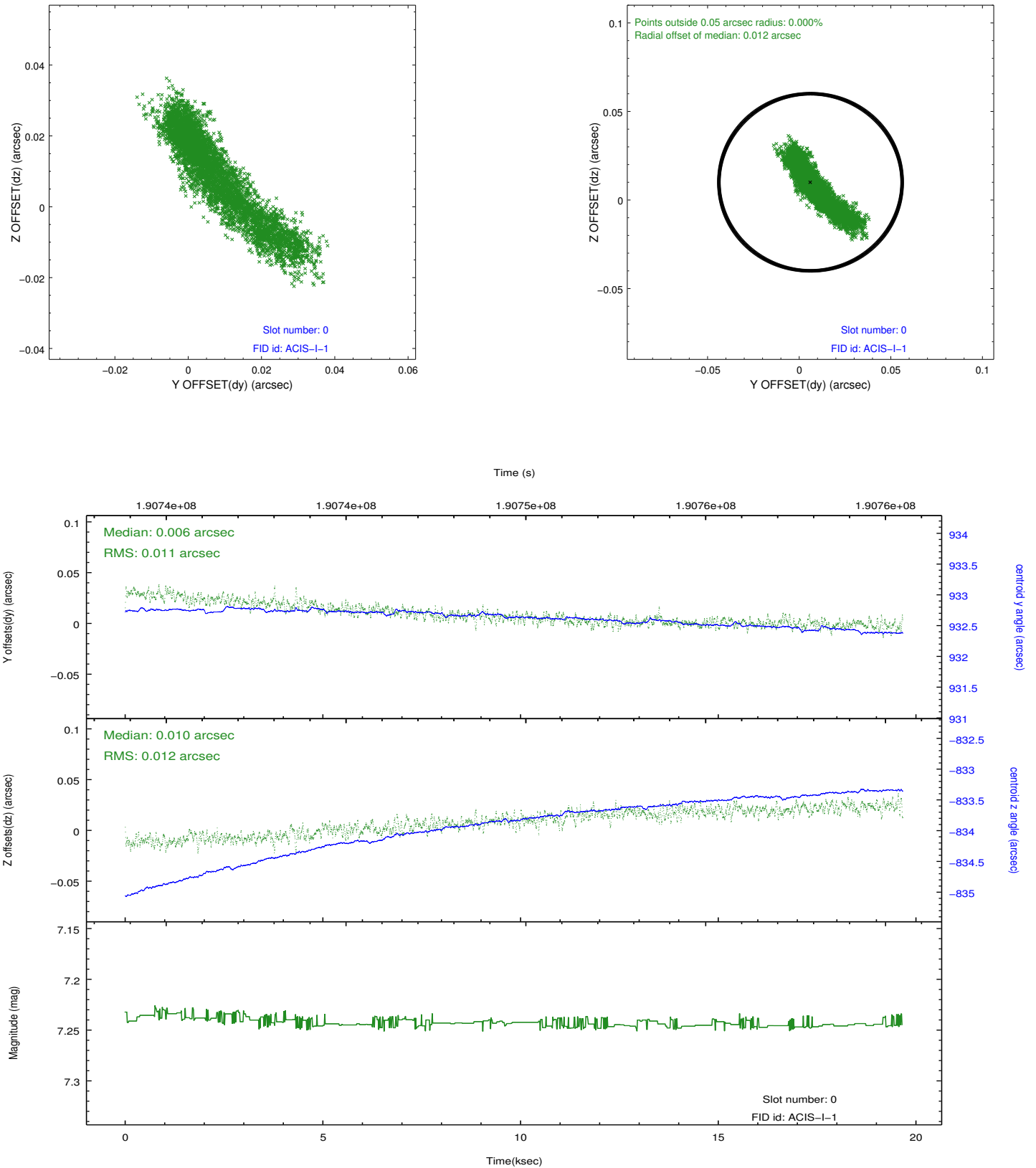


2.4.5 Slot 7

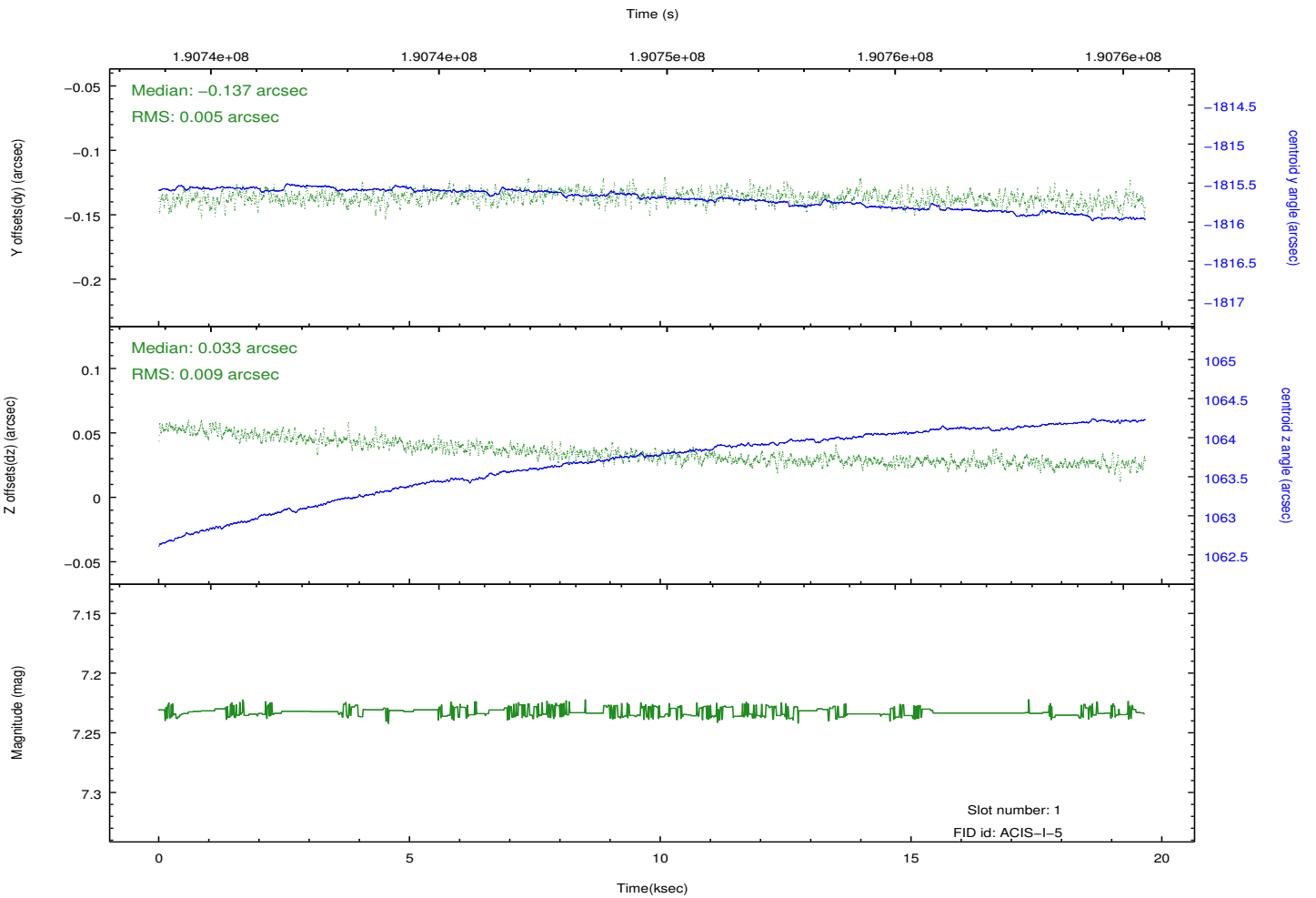
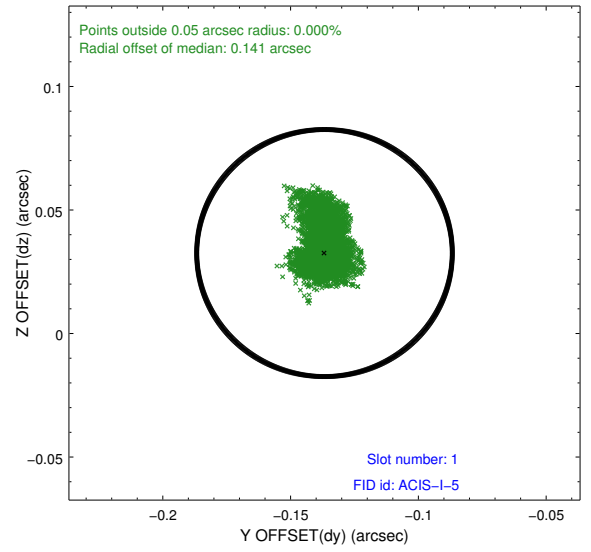
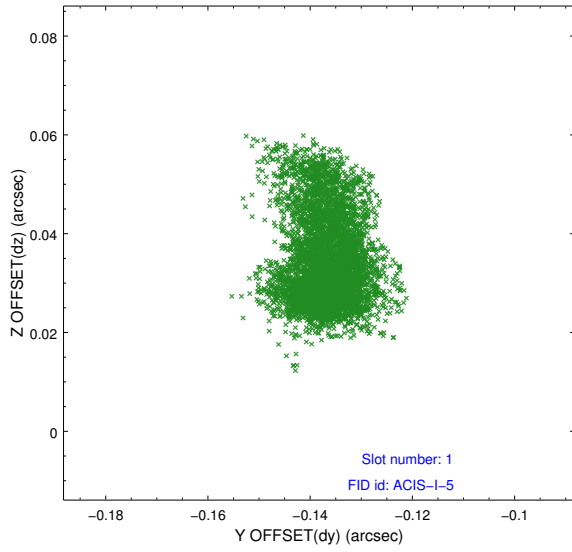


2.5 FID Slots

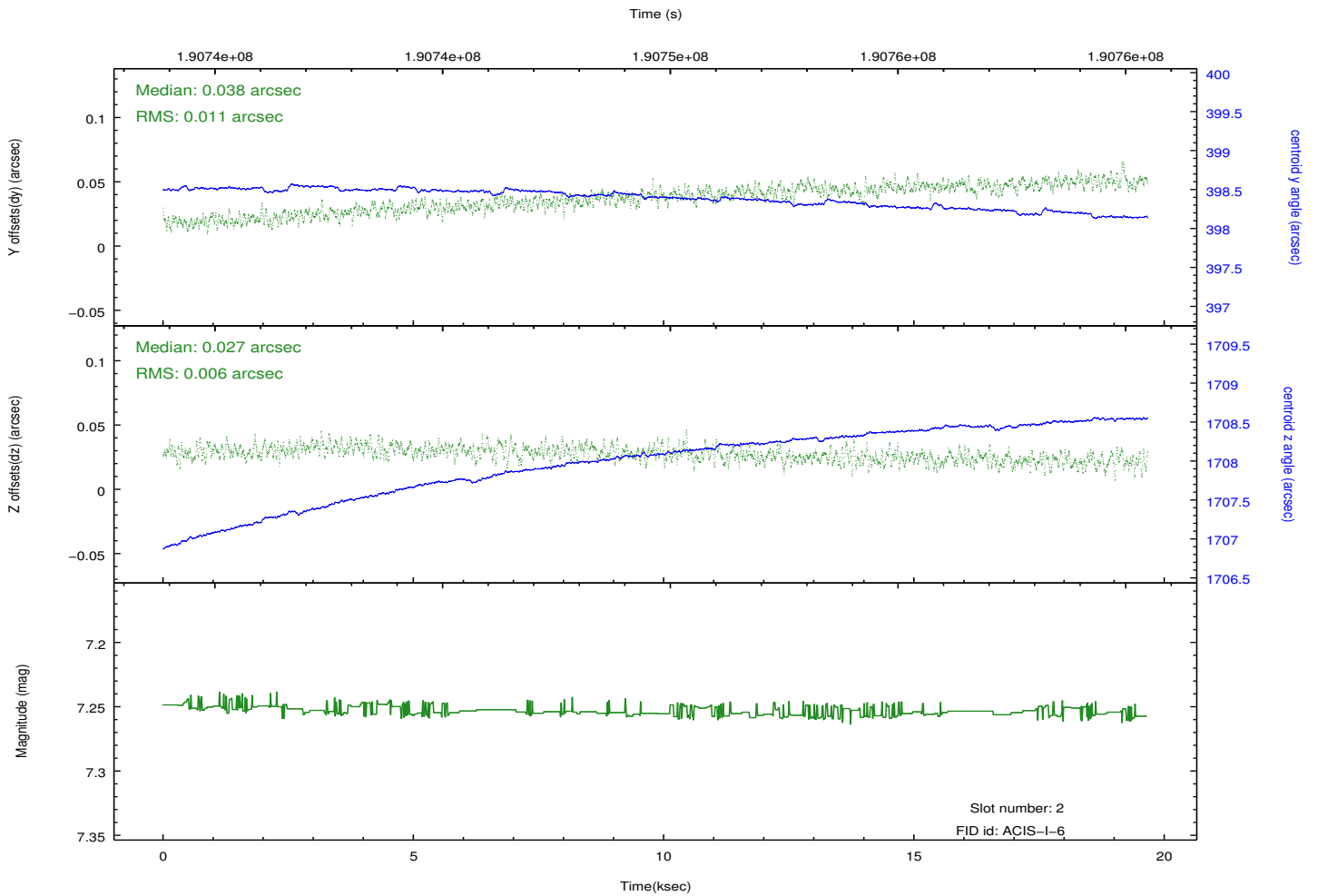
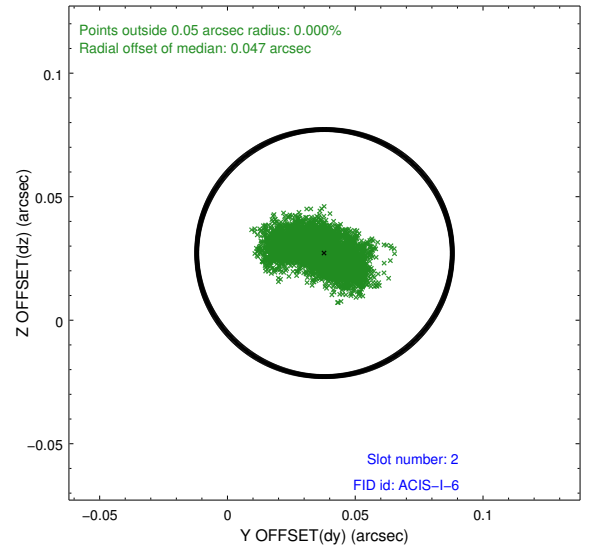
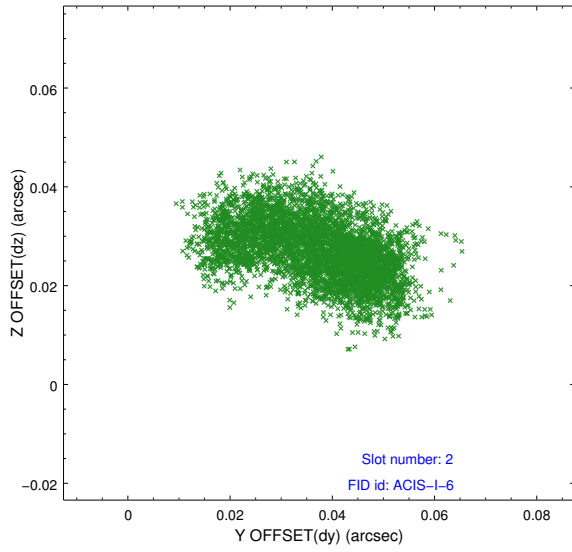
2.5.1 Slot 0



2.5.2 Slot 1



2.5.3 Slot 2



A Summary

A.1 Status

V&V Scientist	Jen Lauer
V&V Date (YYYY-MM-DD)	2012.12.04
V&V Edition	1
V&V Disposition and Status	OK
V&V Charge Time	19.66

A.2 Comments

Monitor constraint met. Roll constraint not met, outside roll tolerance range by less than one degree.