

V&V Reference Report

L2 ASCDS Version : 8.4.5

Observation 4166 - L2 Version 3
Chandra X-Ray Center

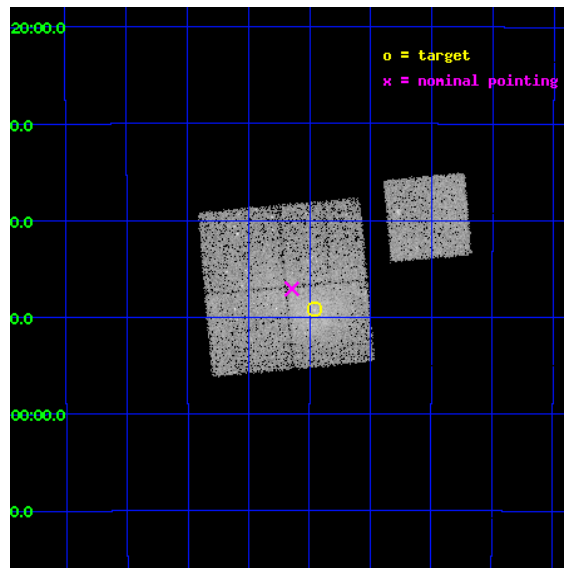
L2 Processing Date : Nov 9 2012

Contents

1	Front	2
2	OBI	3
2.1	OBI	3
2.1.1	Images	3
2.1.2	Bias	3
2.1.3	Parameters	4
2.1.4	Events	4
2.2	Compared Parameters	5
2.3	Aspect	6
2.4	Star Slots	9
2.4.1	Slot 3	9
2.4.2	Slot 4	10
2.4.3	Slot 5	11
2.4.4	Slot 6	12
2.4.5	Slot 7	13
2.5	FID Slots	14
2.5.1	Slot 0	14
2.5.2	Slot 1	15
2.5.3	Slot 2	16
A	Summary	17
A.1	Status	17
A.2	Comments	17

1 Front

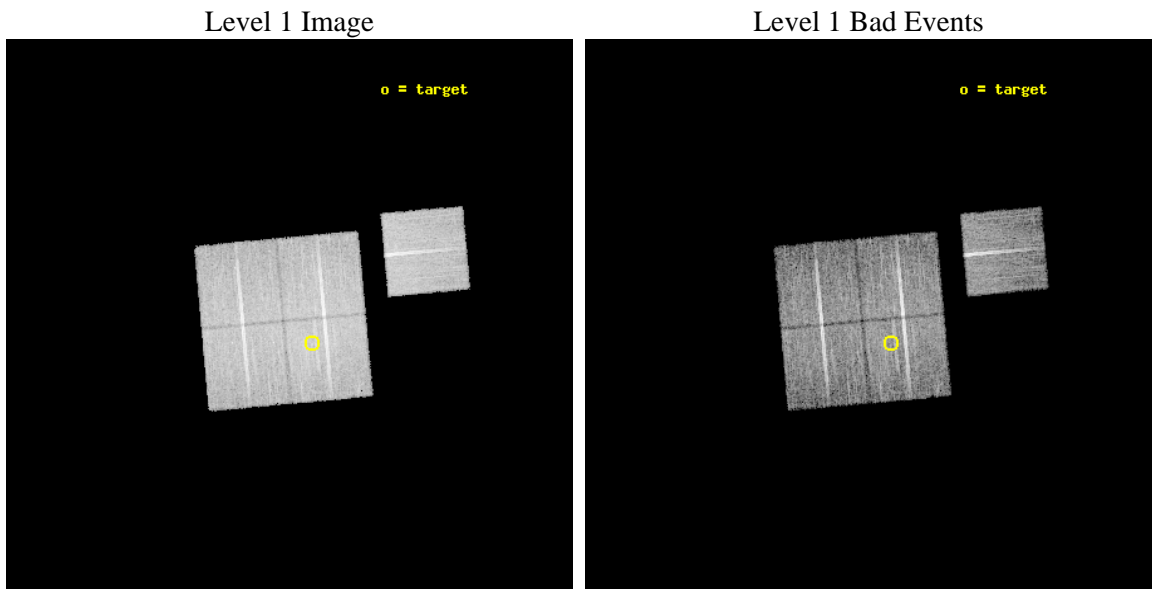
seq_num	800322	Sequence number
obs_id	4166	Observation id
title	SPATIALLY RESOLVED OBSERVATION OF A MAJOR MERGING EVENT IN THE SHAPLEY SUPERCLUSTER	Proposal title
observer	Dr. Stefano Ettori	Principal investigator
object	SC1329-313	Source name
dtcycle	0	
cycle	P	events from which exps? Prim/Second/Both
ra_targ	202.865833	Observer's specified target RA [deg]
dec_targ	-31.818889	Observer's specified target Dec [deg]
ra_nom	202.91118488241	Nominal RA [deg]
dec_nom	-31.78477509281	Nominal Dec [deg]
roll_nom	84.787537882134	Nominal Roll [deg]
revision	3	Processing version of data
ontime	19629.118011832	Sum of GTIs [s]
livetime	19372.649134261	Livetime [s]
ontime0	19629.118141383	Sum of GTIs [s]
ontime1	19635.399962217	Sum of GTIs [s]
ontime2	19629.118101478	Sum of GTIs [s]
ontime3	19629.118011832	Sum of GTIs [s]
ontime6	19635.399962217	Sum of GTIs [s]
l2events	62716	Number of level 2 events



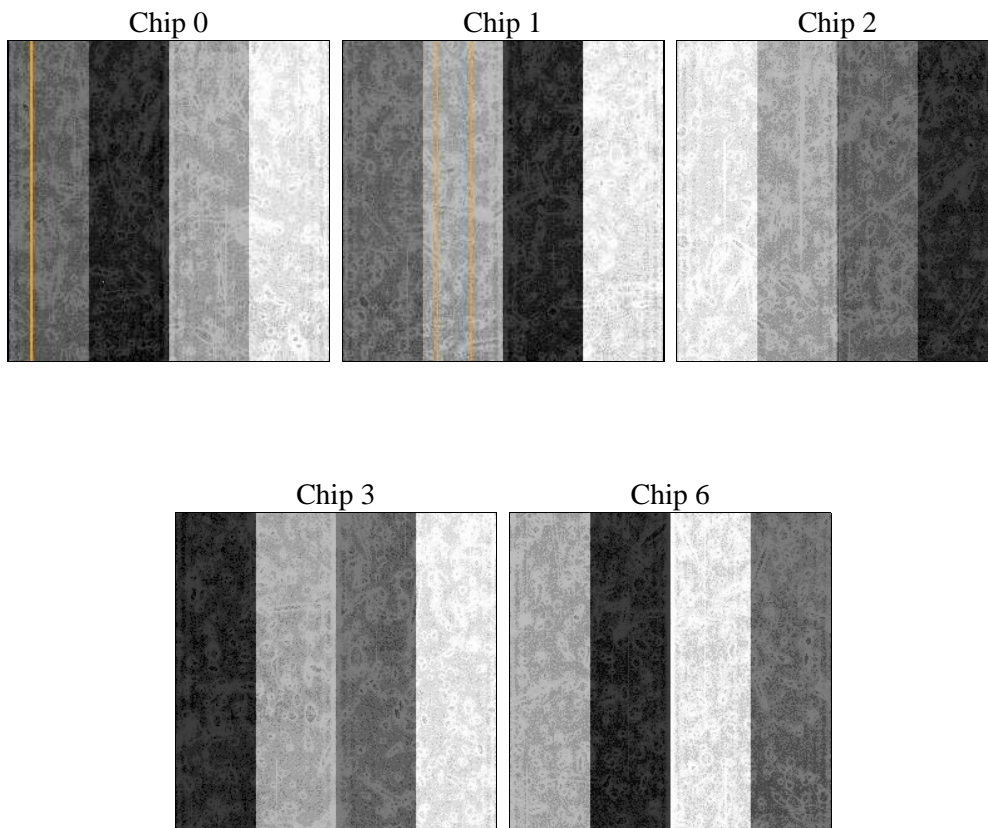
2 OBI

2.1 OBI

2.1.1 Images



2.1.2 Bias



2.1.3 Parameters

obi_num	0	Obi number	sched_exp_time	19500.000000	[s] Scheduled observation exposure time
ascdsver	8.4.5	Processing system revision	ontime	19629.118011832	Sum of GTIs [s]
caldbver	4.5.2	 	ontime0	19629.118141383	Sum of GTIs [s]
date	2012-11-09T08:13:19	Date and time of file creation	ontime1	19635.399962217	Sum of GTIs [s]
revision	3	Processing version of data	ontime2	19629.118101478	Sum of GTIs [s]
			ontime3	19629.118011832	Sum of GTIs [s]
			ontime6	19635.399962217	Sum of GTIs [s]
			l1events	530304	Number of level 1 events

2.1.4 Events

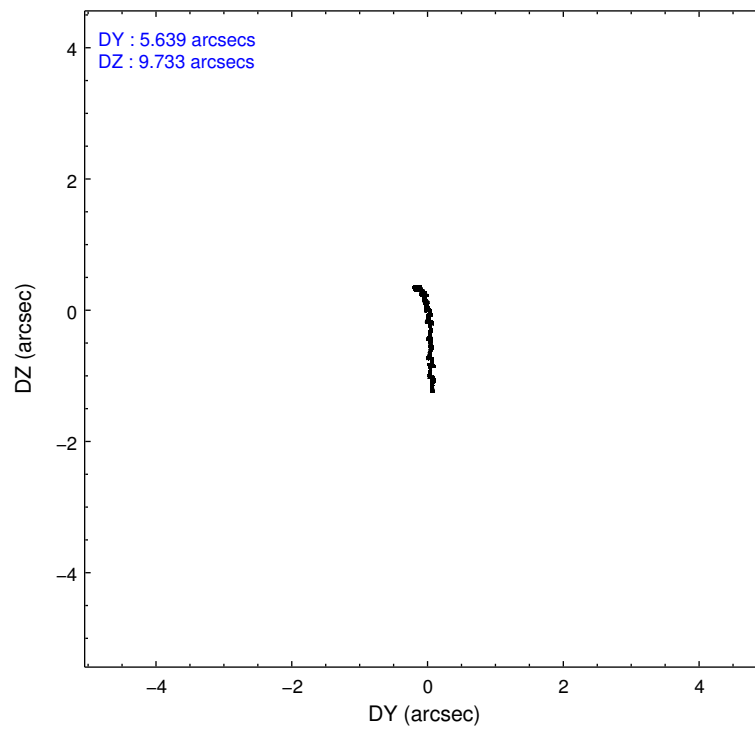
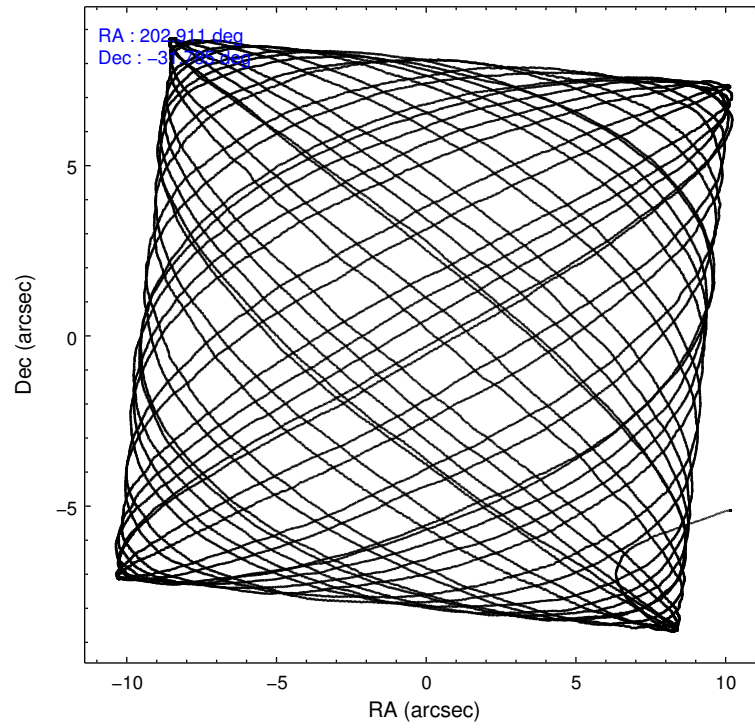
	ccd 0	ccd 1	ccd 2	ccd 3	ccd 6
level 1 events	97726	100779	110002	113597	108200
rejected events	84821	85979	97009	96216	94203
rejected %	86%	85%	88%	84%	87%

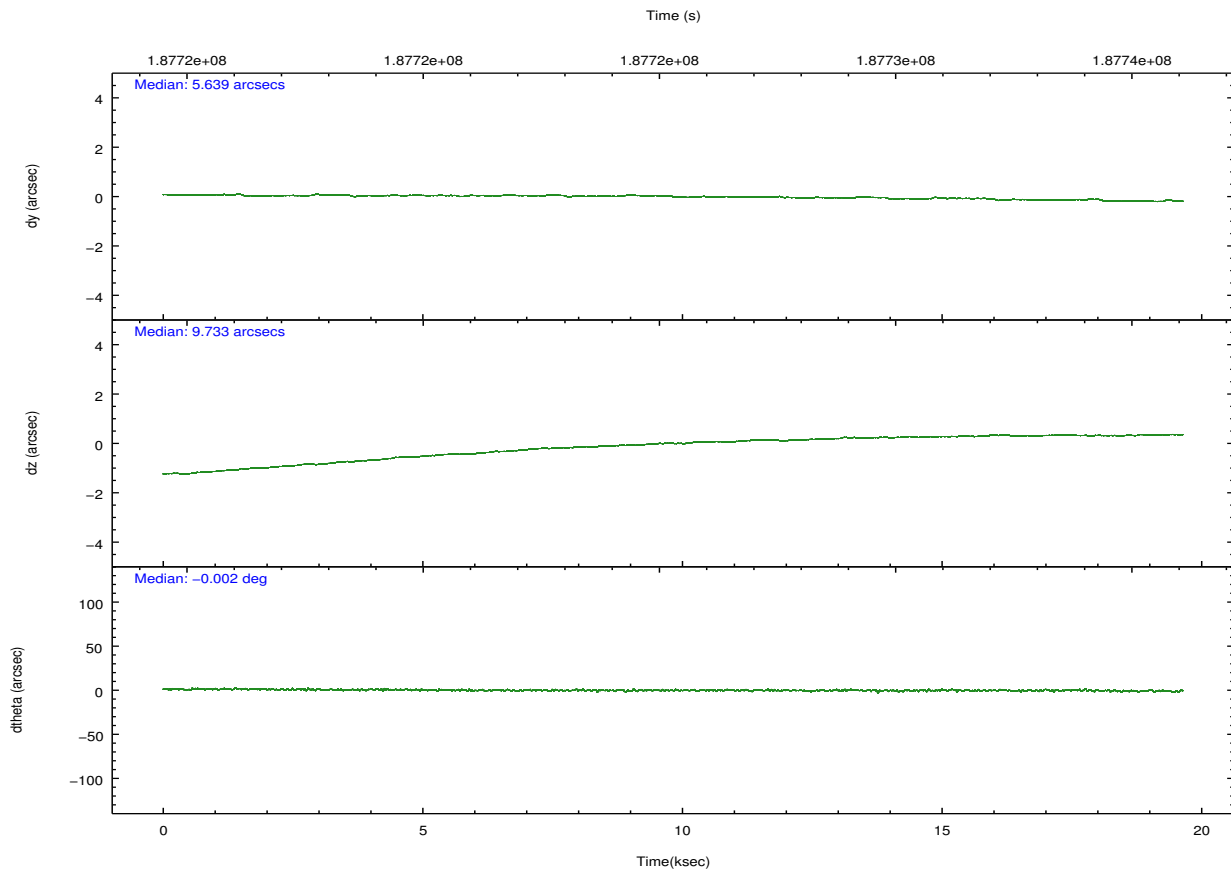
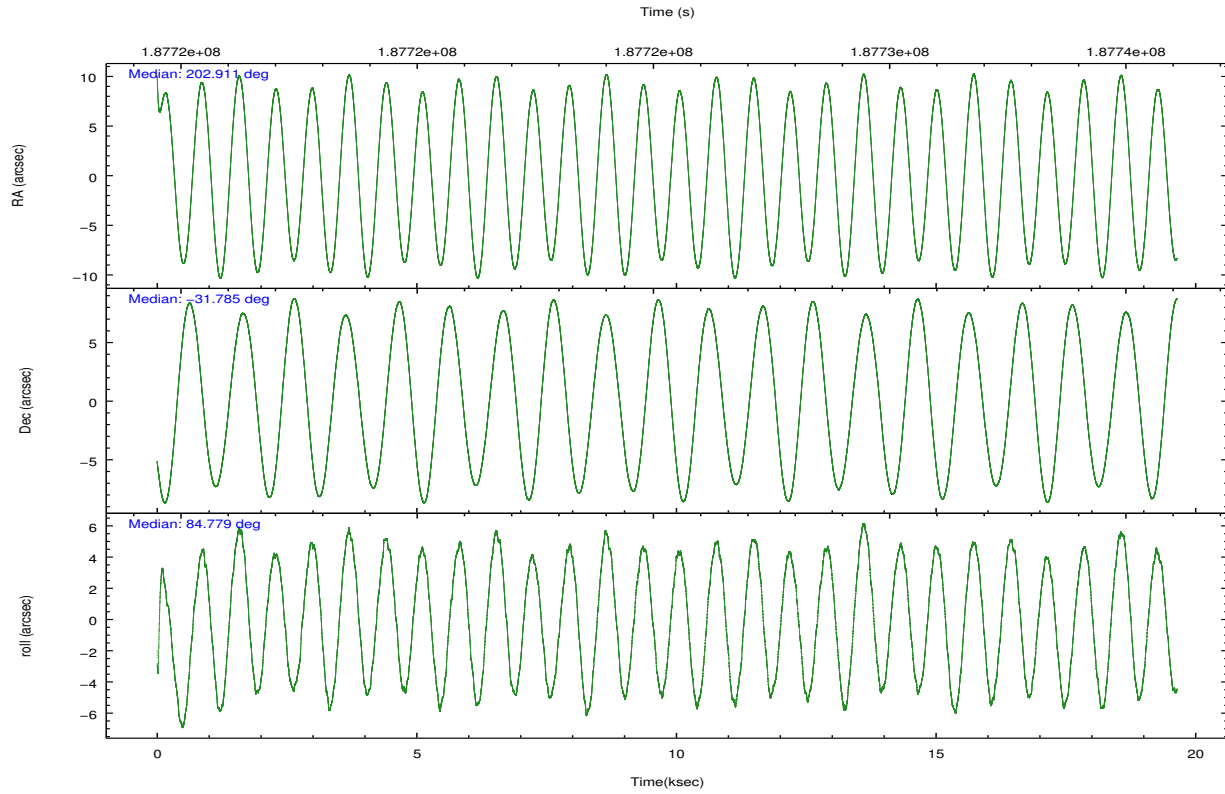
	ccd 0	ccd 1	ccd 2	ccd 3	ccd 6
grade 0 events	6264	7666	6890	10449	7329
	6%	7%	6%	9%	6%
grade 1 events	49	40	61	96	50
	0%	0%	0%	0%	0%
grade 2 events	2840	2879	2625	2913	2666
	2%	2%	2%	2%	2%
grade 3 events	1319	1382	1178	1371	1304
	1%	1%	1%	1%	1%
grade 4 events	1172	1396	1271	1331	1285
	1%	1%	1%	1%	1%
grade 5 events	3879	3906	3646	4224	4235
	3%	3%	3%	3%	3%
grade 6 events	2124	2415	1955	2173	2303
	2%	2%	1%	1%	2%
grade 7 events	80079	81095	92376	91040	89028
	81%	80%	83%	80%	82%

2.2 Compared Parameters

Parameter	Planned	Actual	Parameter	Planned	Actual
Instrument	ACIS	ACIS	Obspar format version number	7	7
Detector	ACIS-01236	ACIS-01236	Obspar file type	PREDICTED	ACTUAL
Grating	NONE	NONE	Obspar update status	NONE	UPDATED
Data mode	VFAINT	VFAINT	Number of optional ACIS chips dropped	0	0
Observation mode	POINTING	POINTING	On-chip summing requested	N	N
[deg] Pointing RA	202.924793	202.9111848824142	Subarray requested	NONE	NONE
[deg] Pointing Dec	-31.809582	-31.78477509281005	Alternating exposures requested	N	N
[deg] Pointing Roll	84.586028	84.78753788213413	[s] Primary exposure time	0.000000	3.1
[mm] SIM focus pos	-0.782348	-0.7809083437167272			
[mm] SIM defocus	0	0.001439871863259334			
[mm] SIM translation stage pos	-233.592463	-233.5874344608287			
[mm] SIM translation stage offset	0	-0.005018542100998502			
[s] Observation start time (MET)	187715611.184000	187713701.36639			
Observation start date	2003-12-13T15:12:27	2003-12-13T14:41:41			
[s] Observation end time (MET)	187735111.184000	187735850.59236			
Observation end date	2003-12-13T20:37:27	2003-12-13T20:50:50			
Read mode	TIMED	TIMED			

2.3 Aspect



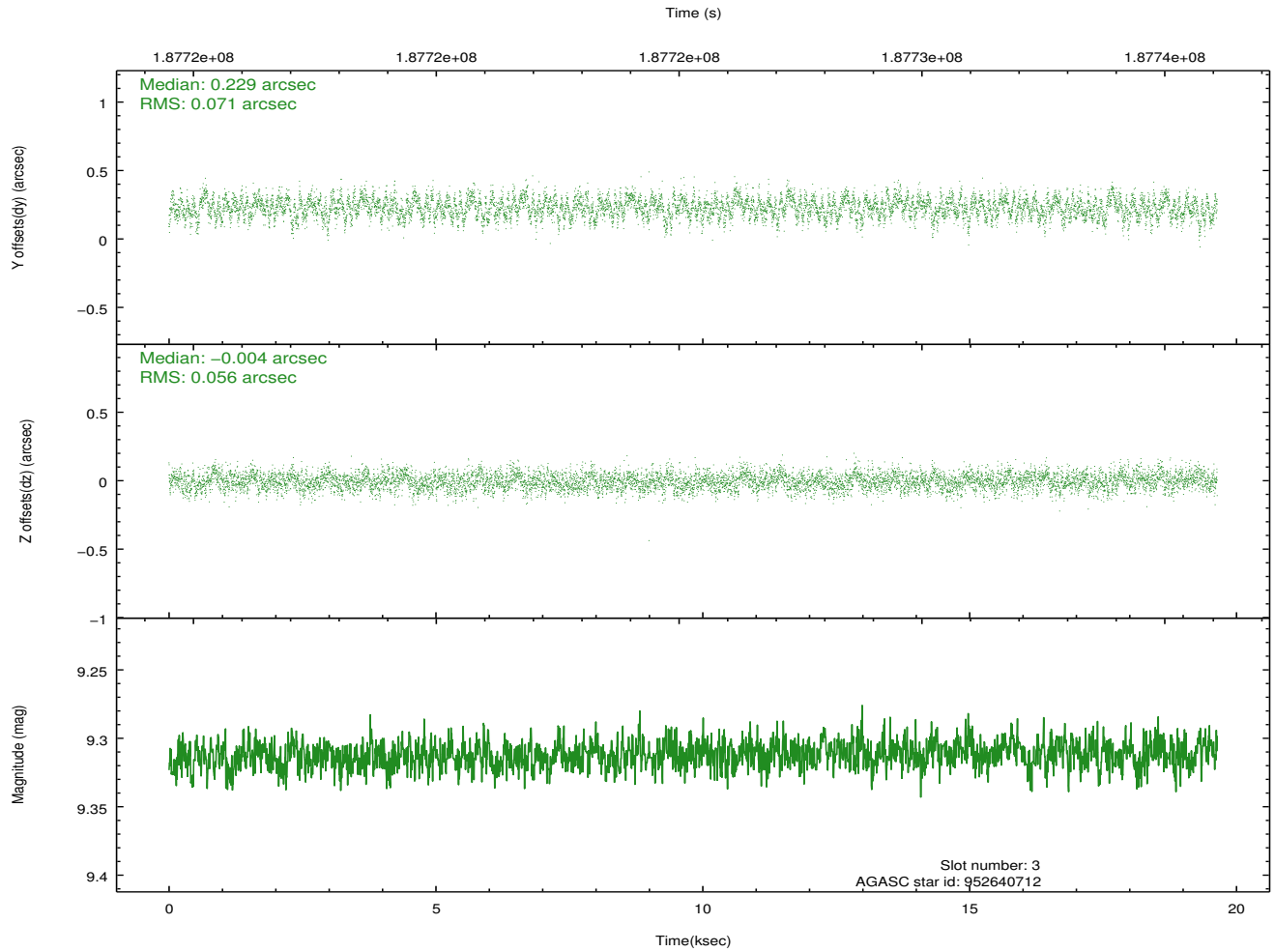
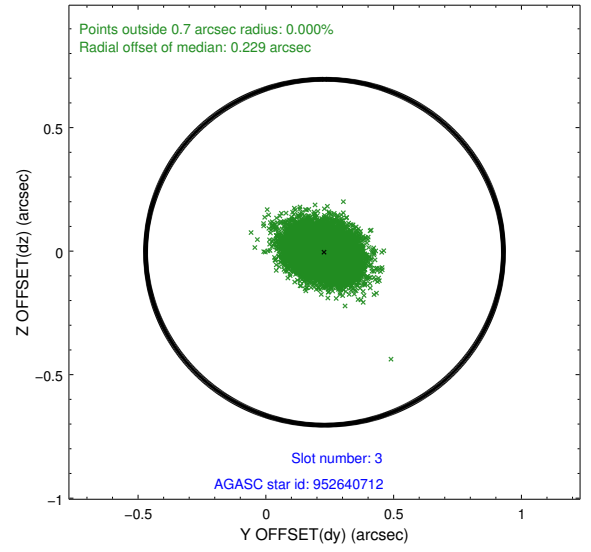
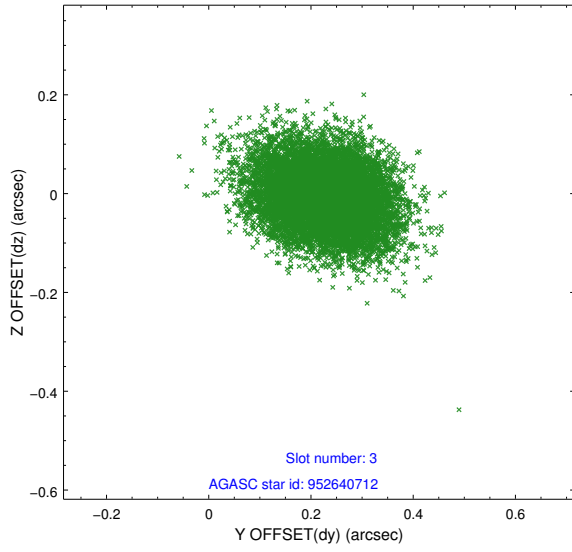


Slot Statistics

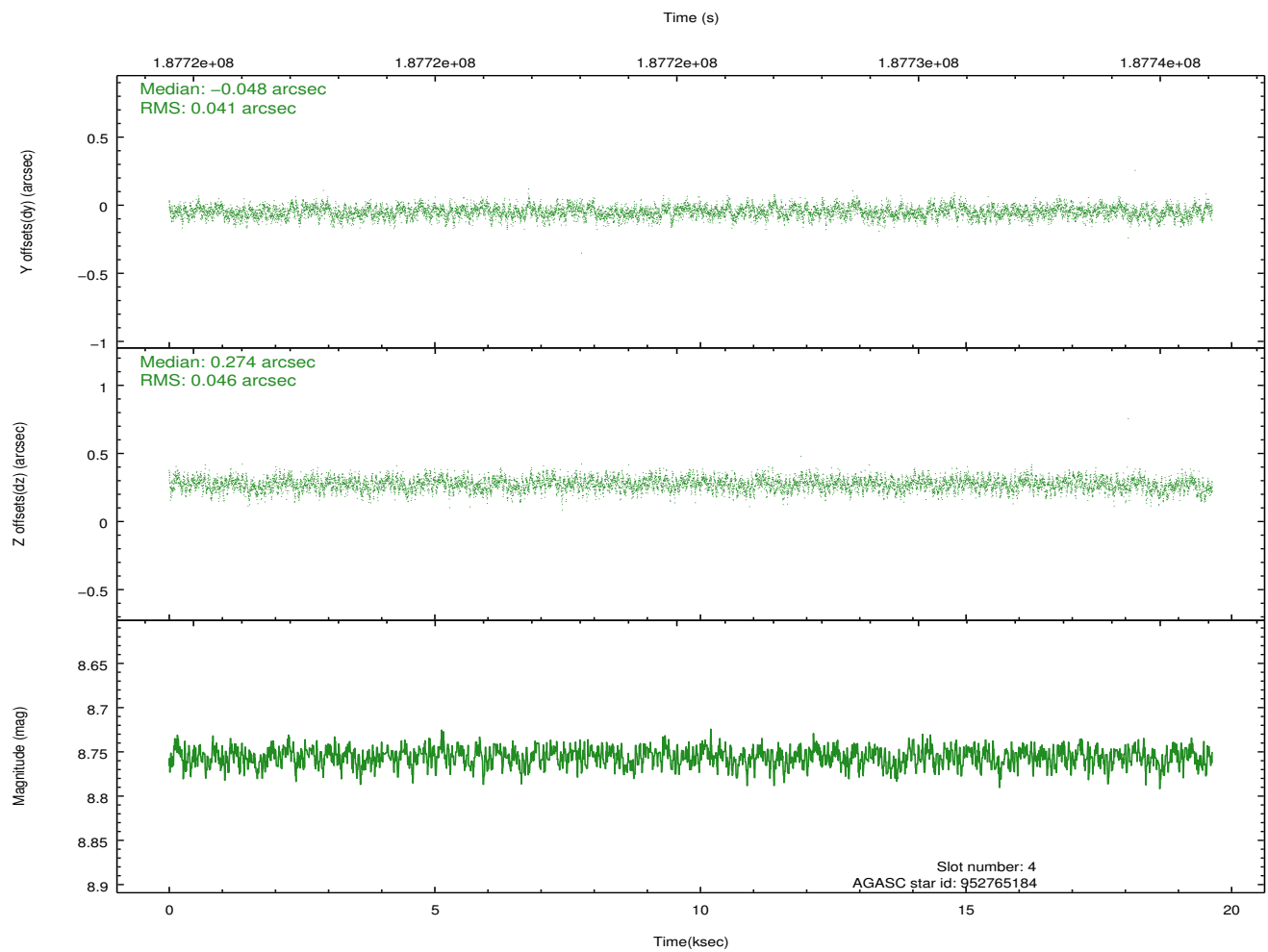
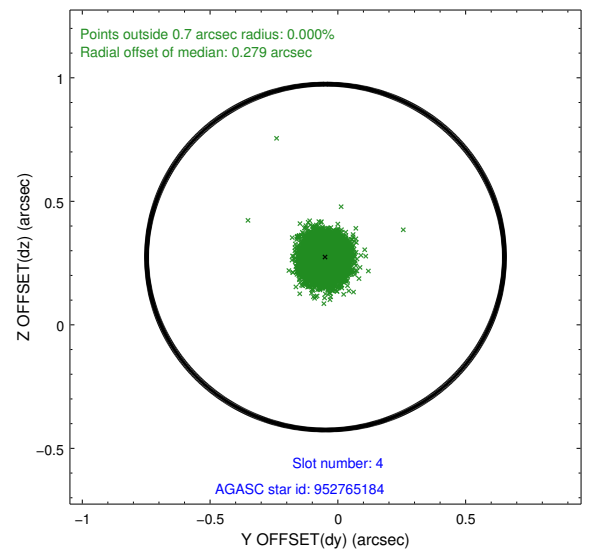
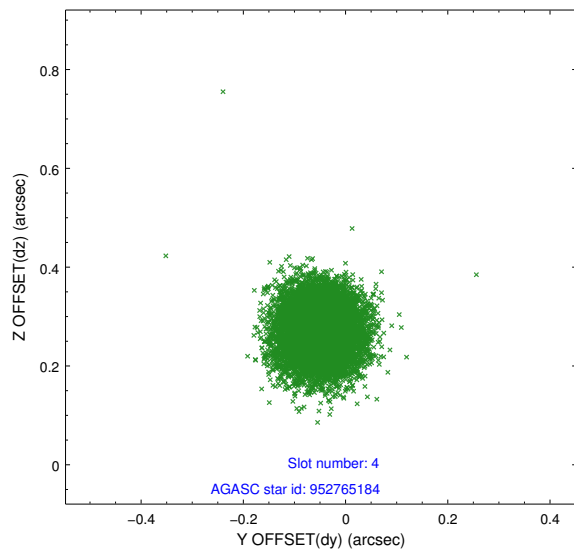
slot	status	id	mag	n_pts	med_dy	med_dz	dr1	dr2	ra	dec	mean_y	mean_z
0	FID	ACIS-I-4	7.18	4791	0.054	0.032	0.015	0.027	0.000000	0.000000	2154.13	1066.87
1	FID	ACIS-I-5	7.23	4791	-0.169	0.021	0.010	0.018	0.000000	0.000000	-1813.81	1064.80
2	FID	ACIS-I-6	7.25	4791	0.016	0.014	0.014	0.027	0.000000	0.000000	399.46	1709.10
3	GUIDE	952640712	9.31	9580	0.229	-0.004	0.095	0.155	202.219584	-32.375412	-2237.07	1941.97
4	GUIDE	952765184	8.76	9581	-0.048	0.274	0.066	0.106	203.344875	-32.058909	-774.94	-1360.12
5	GUIDE	952116240	8.38	9580	-0.186	-0.052	0.067	0.107	202.422973	-31.388320	1360.41	1678.65
6	GUIDE	952646080	7.60	9582	-0.046	-0.353	0.041	0.067	202.214424	-32.002598	-903.44	2092.83
7	GUIDE	952763888	9.17	9578	0.055	0.133	0.080	0.130	203.325048	-31.883969	-153.09	-1242.58

2.4 Star Slots

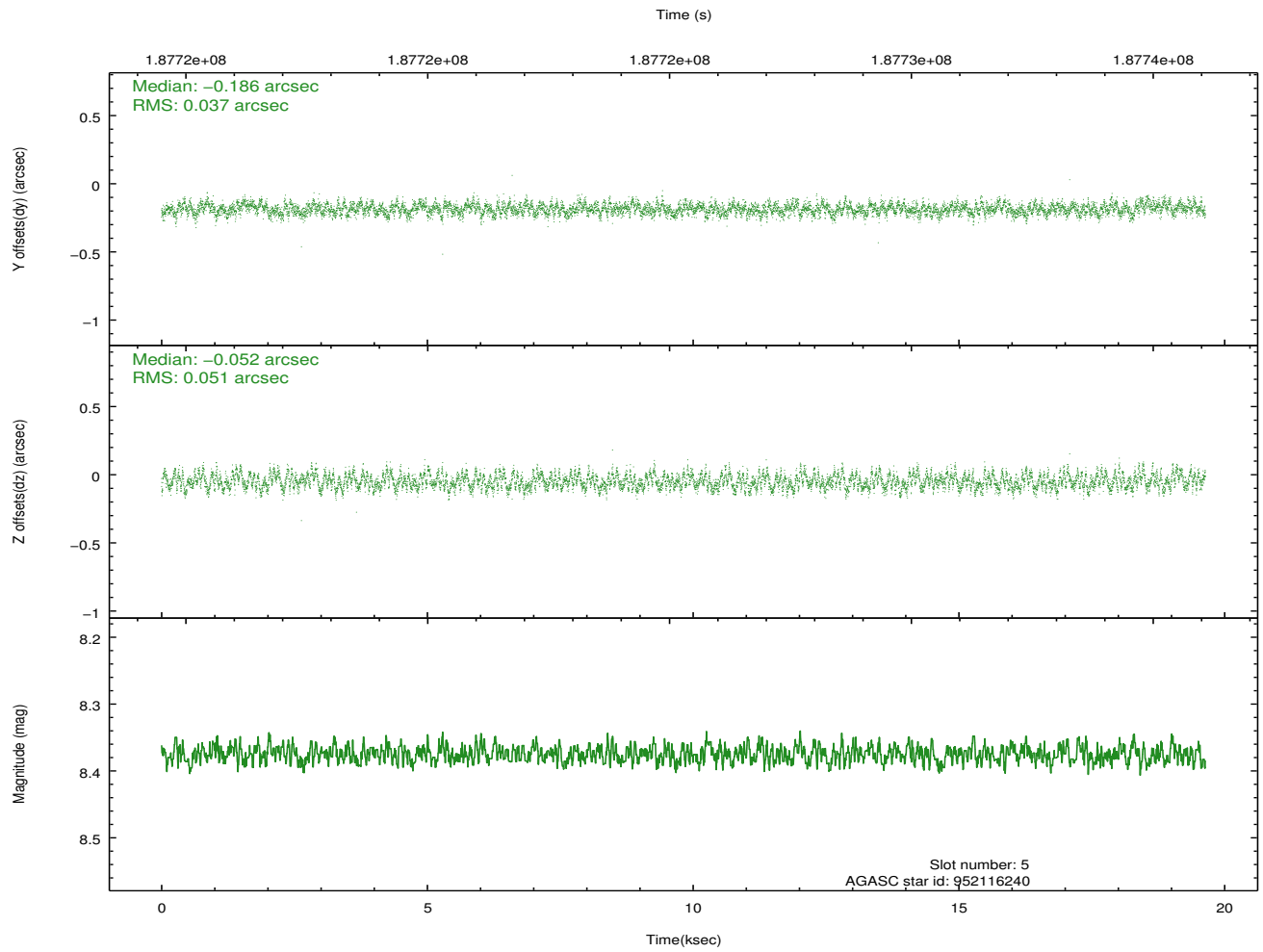
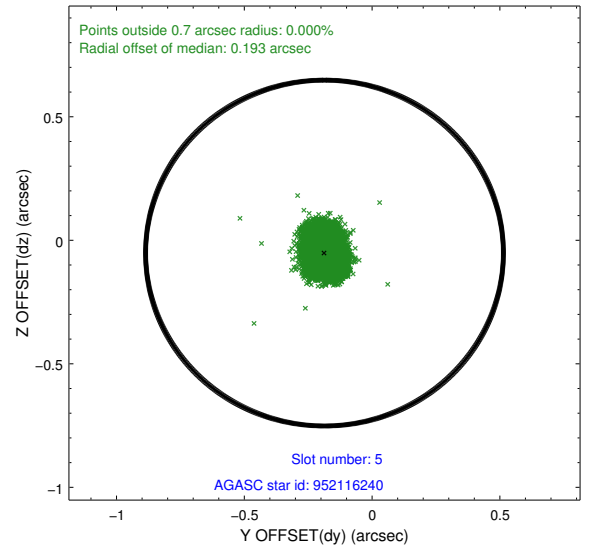
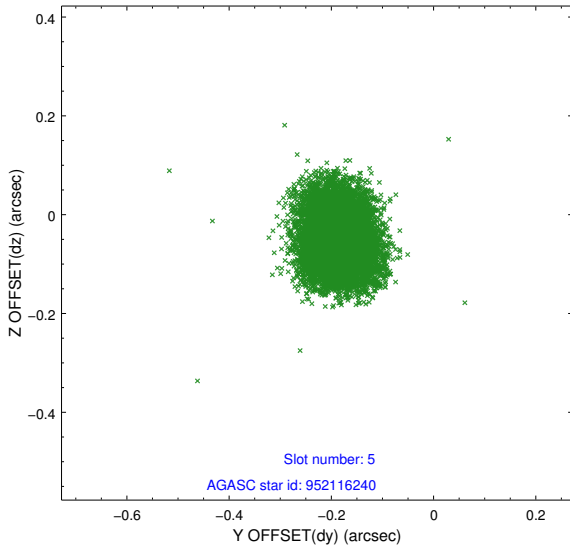
2.4.1 Slot 3



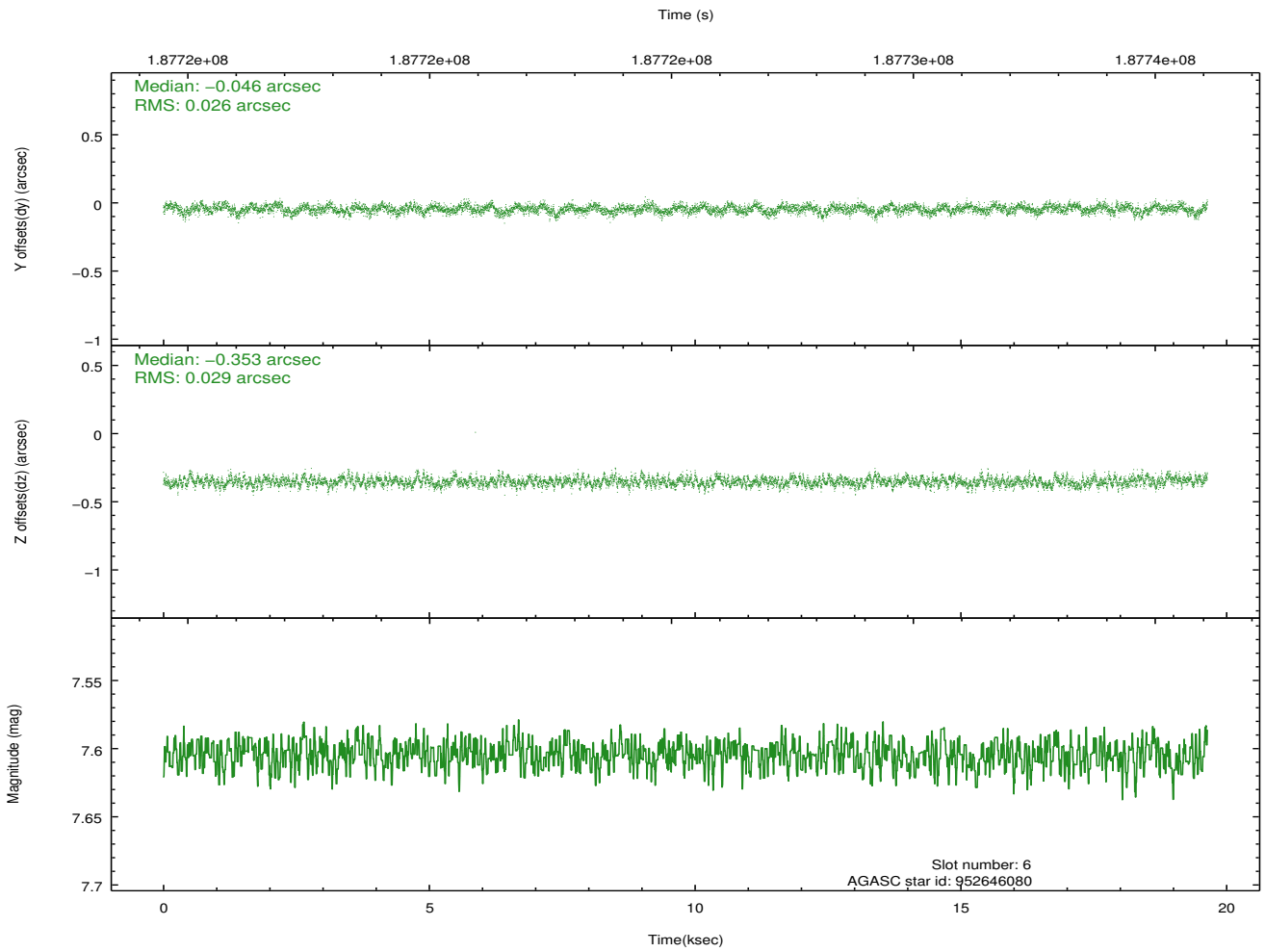
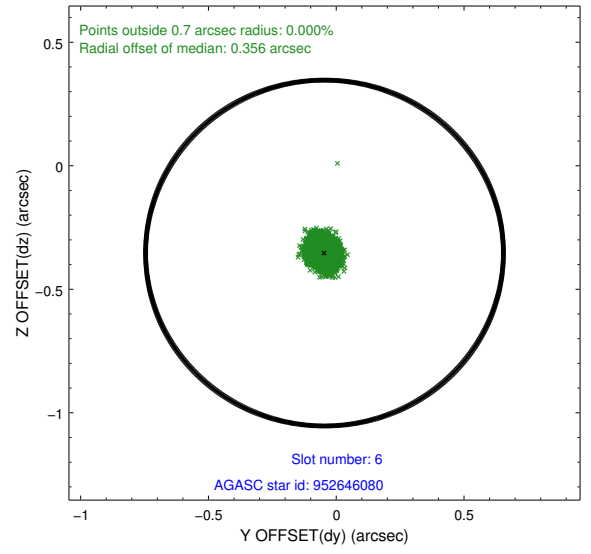
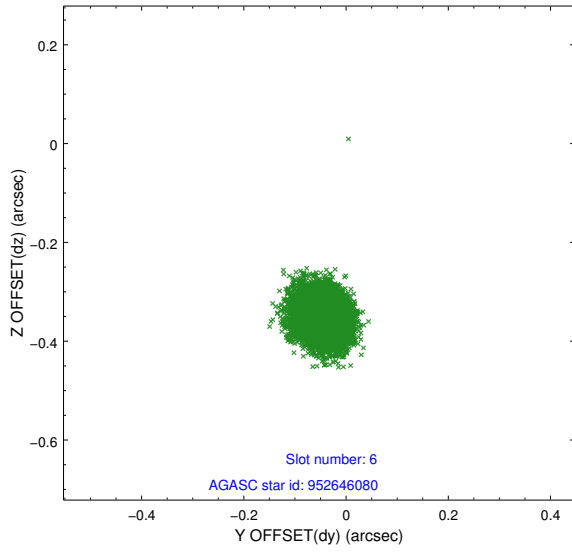
2.4.2 Slot 4



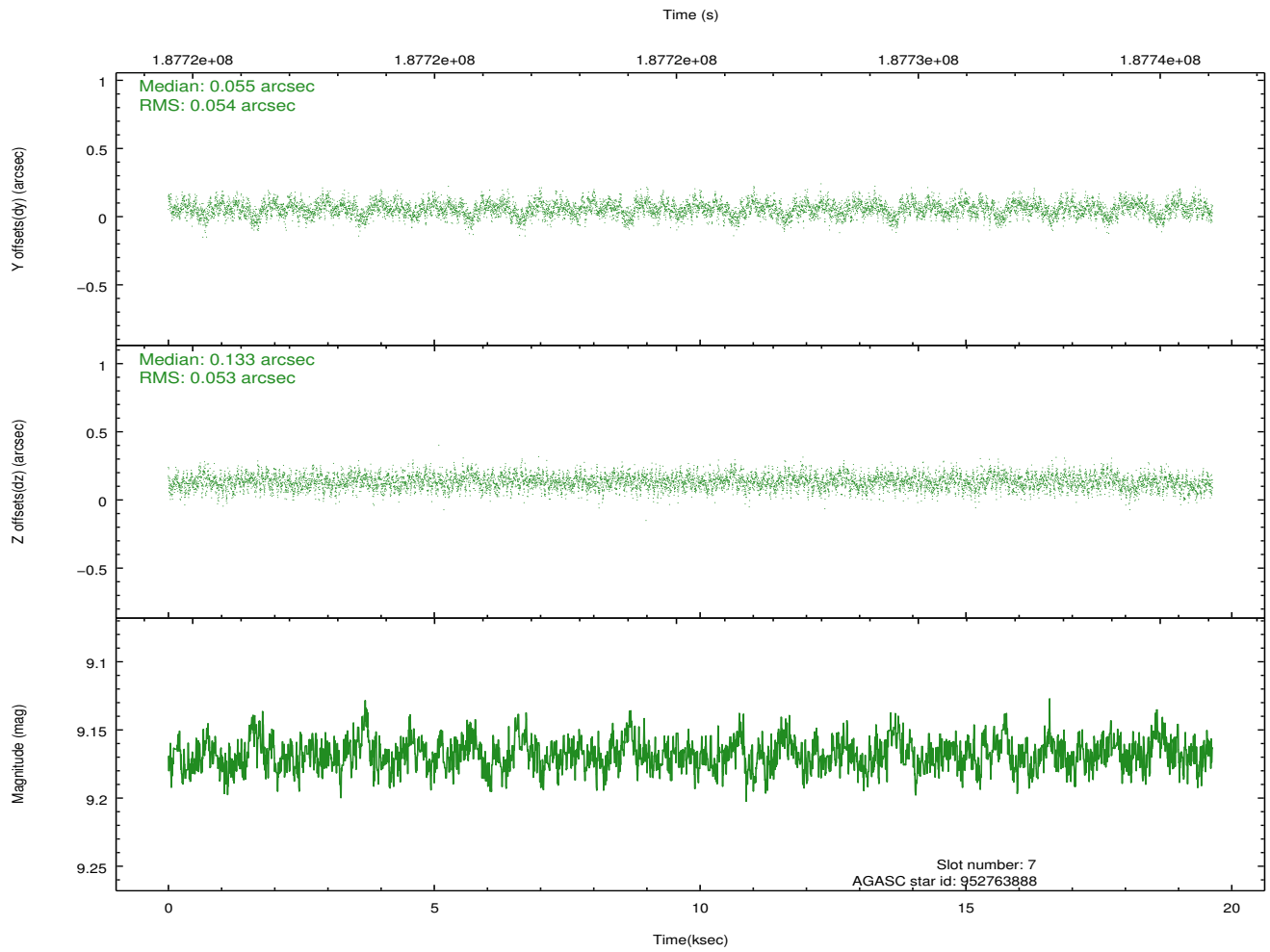
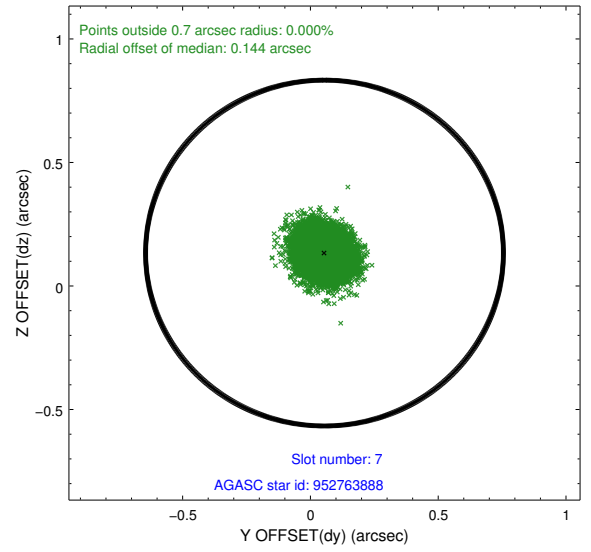
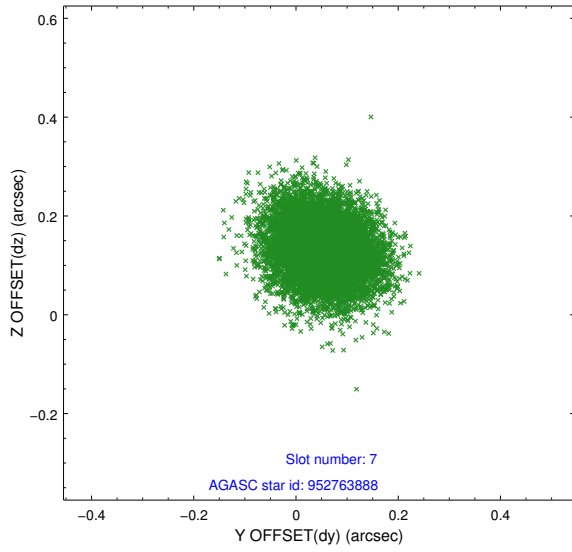
2.4.3 Slot 5



2.4.4 Slot 6

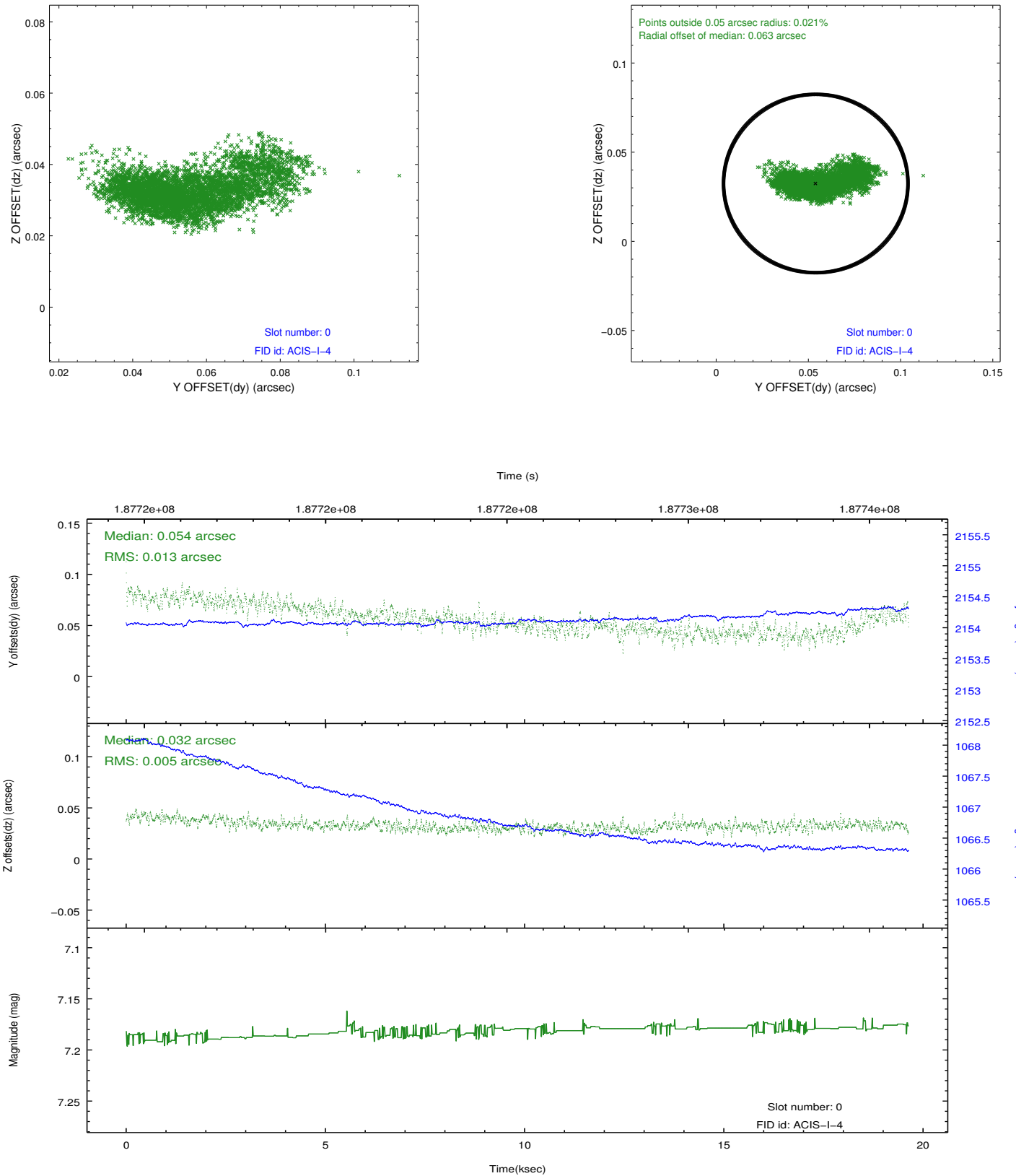


2.4.5 Slot 7

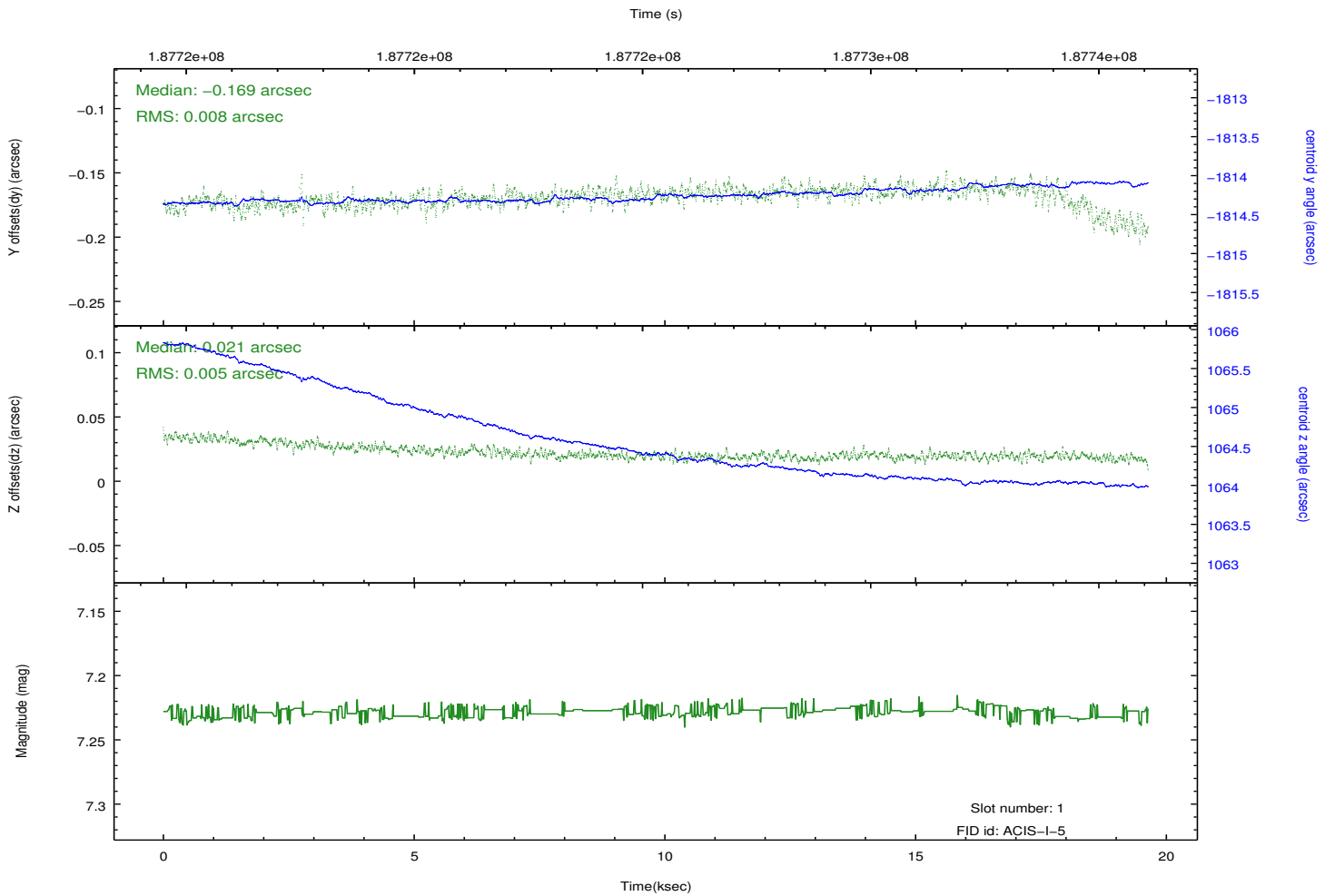
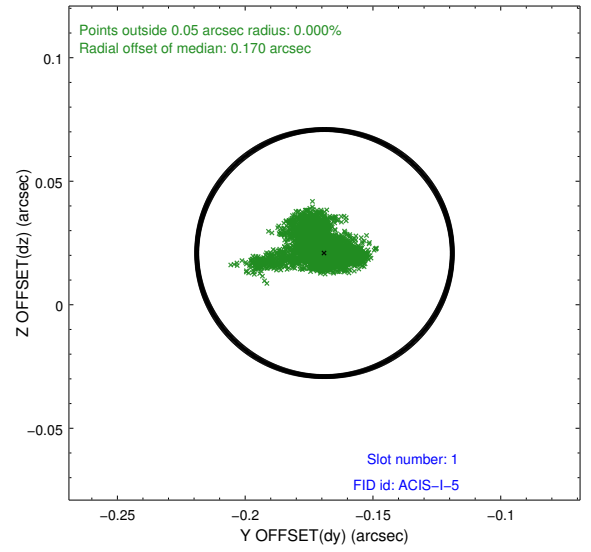
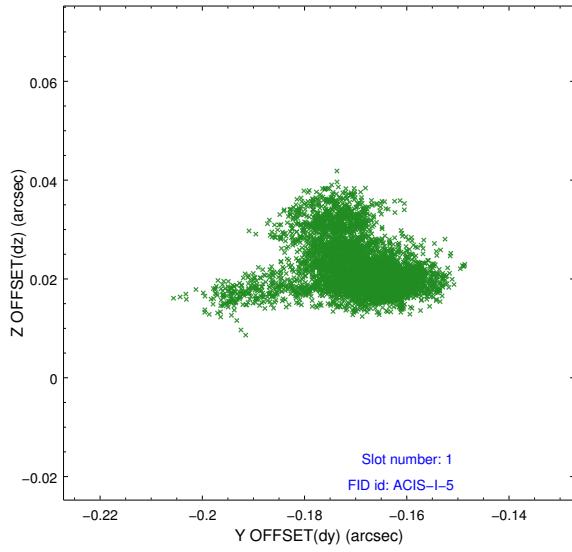


2.5 FID Slots

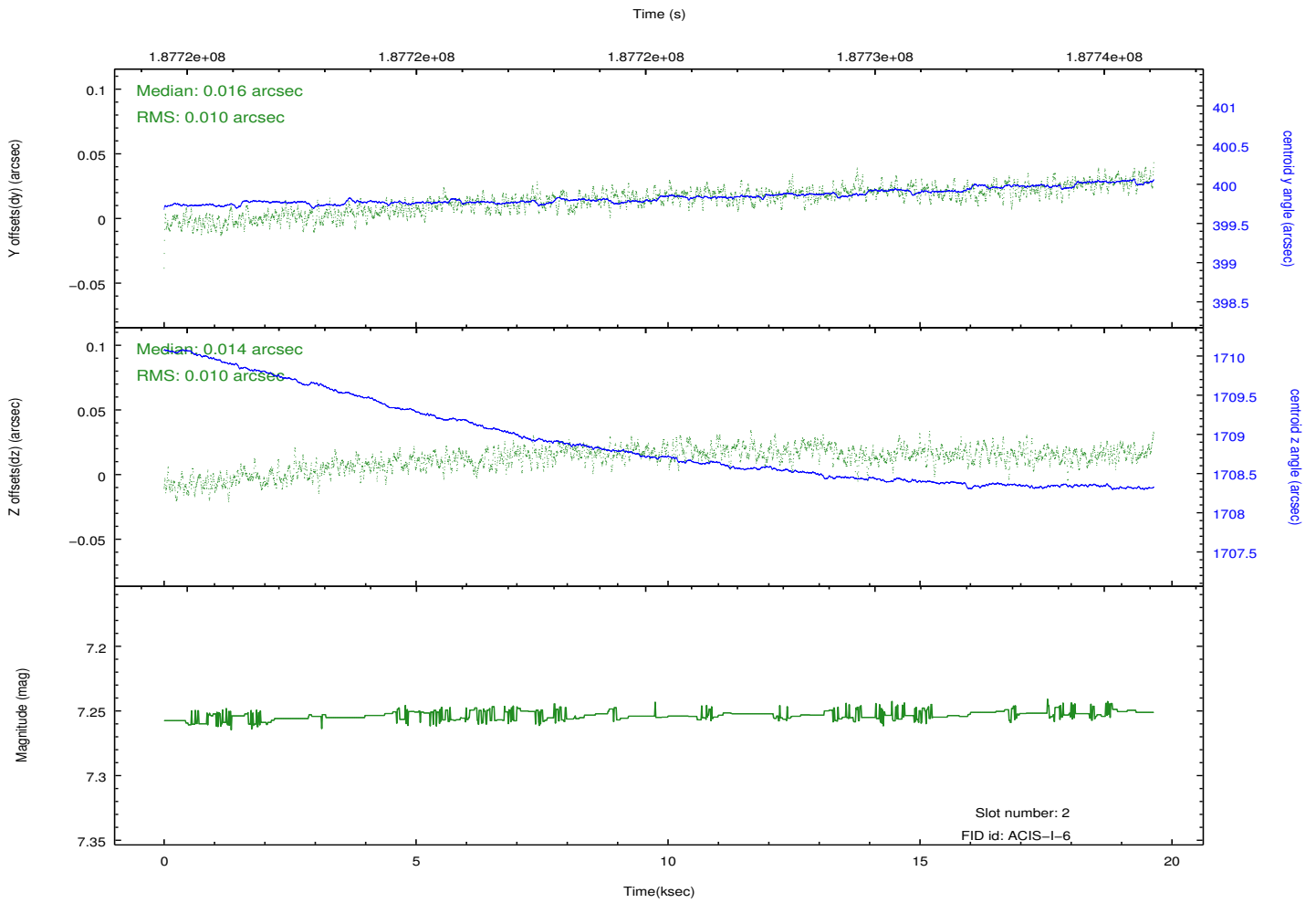
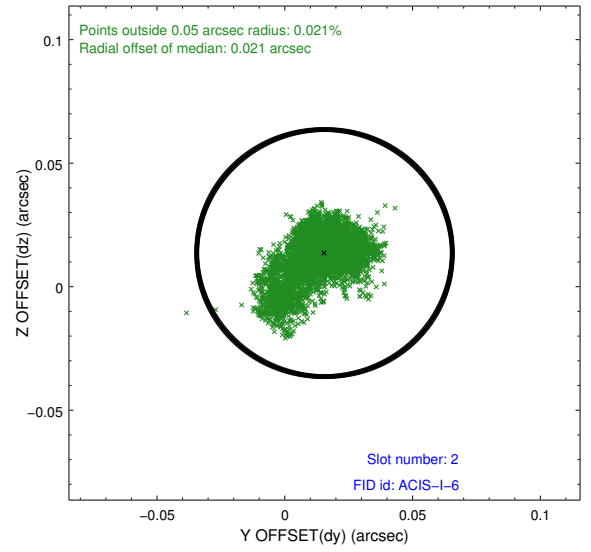
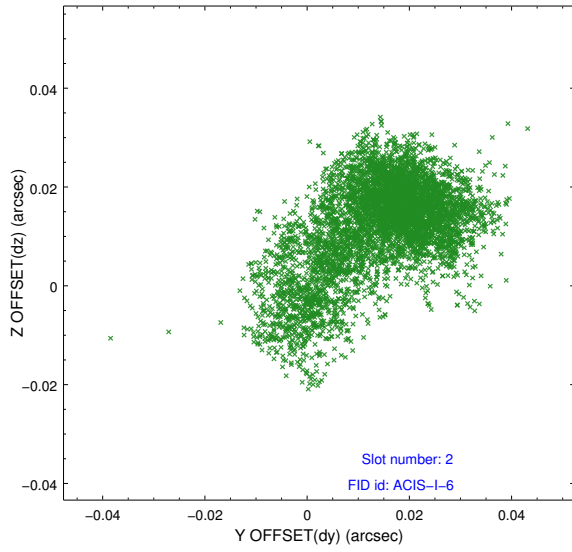
2.5.1 Slot 0



2.5.2 Slot 1



2.5.3 Slot 2



A Summary

A.1 Status

V&V Scientist	Jen Lauer
V&V Date (YYYY-MM-DD)	2012.12.03
V&V Edition	1
V&V Disposition and Status	OK
V&V Charge Time	19.625

A.2 Comments