

V&V Reference Report

L2 ASCDS Version : 8.4.5

Observation 4176 - L2 Version 3
Chandra X-Ray Center

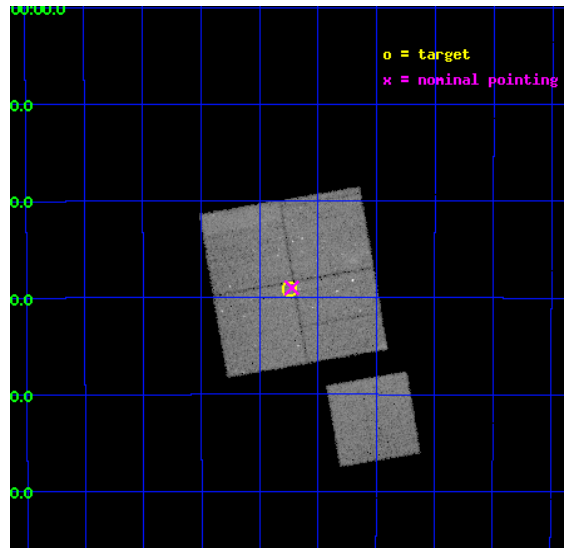
L2 Processing Date : Oct 29 2012

Contents

1	Front	2
2	OBI	3
2.1	OBI	3
2.1.1	Images	3
2.1.2	Bias	3
2.1.3	Parameters	4
2.1.4	Events	4
2.2	Compared Parameters	5
2.3	Aspect	6
2.4	Star Slots	9
2.4.1	Slot 3	9
2.4.2	Slot 4	10
2.4.3	Slot 5	11
2.4.4	Slot 6	12
2.4.5	Slot 7	13
2.5	FID Slots	14
2.5.1	Slot 0	14
2.5.2	Slot 1	15
2.5.3	Slot 2	16
A	Summary	17
A.1	Status	17
A.2	Comments	17

1 Front

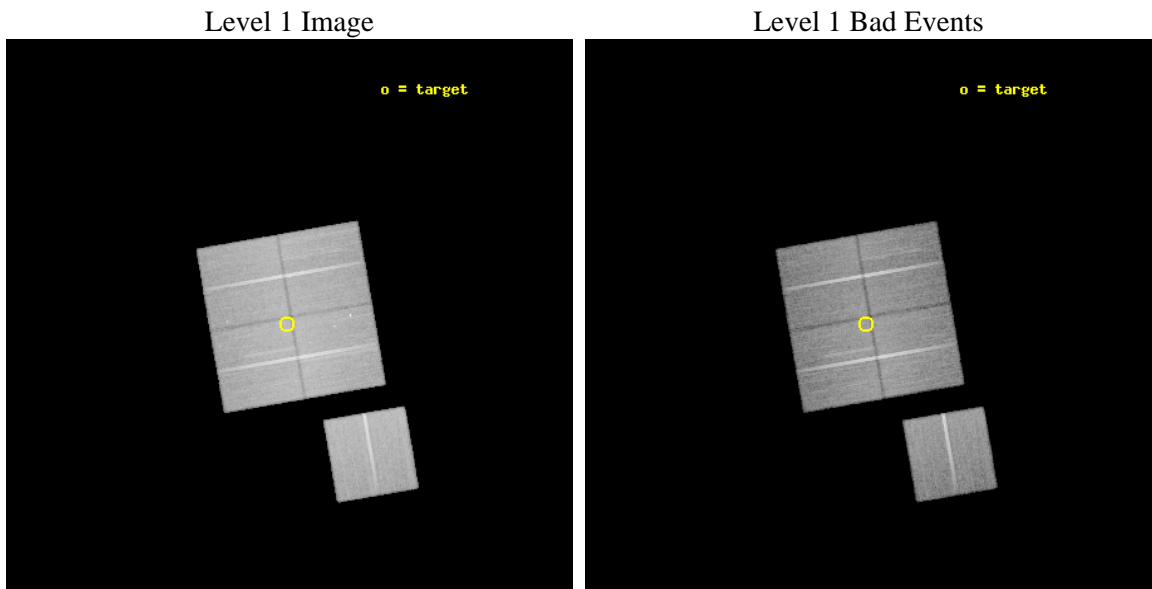
seq_num	800332	Sequence number
obs_id	4176	Observation id
title	SURVEYING THE FORNAX CLUSTER OF GALAXIES	Proposal title
observer	Dr Caleb Scharf	Principal investigator
object	FORNAX CLUSTER	Source name
dtcycle	0	
cycle	P	events from which exps? Prim/Second/Both
ra_targ	54.93585	Observer's specified target RA [deg]
dec_targ	-35.48581	Observer's specified target Dec [deg]
ra_nom	54.93109272678	Nominal RA [deg]
dec_nom	-35.483301104735	Nominal Dec [deg]
roll_nom	170.20592332465	Nominal Roll [deg]
revision	3	Processing version of data
ontime	46636.399910301	Sum of GTIs [s]
livetime	46027.061012255	Livetime [s]
ontime0	46623.836009502	Sum of GTIs [s]
ontime1	46636.399910301	Sum of GTIs [s]
ontime2	46626.976979673	Sum of GTIs [s]
ontime3	46636.399910301	Sum of GTIs [s]
ontime6	46633.258940071	Sum of GTIs [s]
l2events	156130	Number of level 2 events



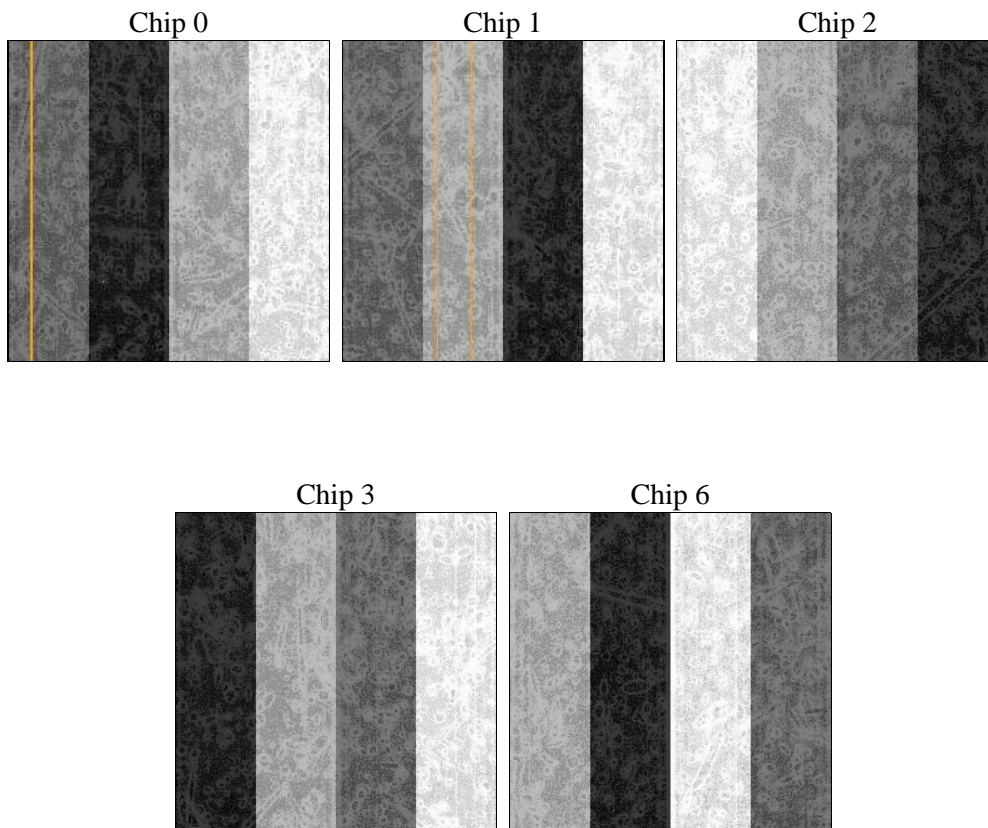
2 OBI

2.1 OBI

2.1.1 Images



2.1.2 Bias



2.1.3 Parameters

obi_num	1	Obi number	sched_exp_time	46500.000000	[s] Scheduled observation exposure time
ascdsver	8.4.5	Processing system revision	ontime	46636.399910301	Sum of GTIs [s]
caldbver	4.5.2	 	ontime0	46623.836009502	Sum of GTIs [s]
date	2012-10-29T04:43:10	Date and time of file creation	ontime1	46636.399910301	Sum of GTIs [s]
revision	3	Processing version of data	ontime2	46626.976979673	Sum of GTIs [s]
			ontime3	46636.399910301	Sum of GTIs [s]
			ontime6	46633.258940071	Sum of GTIs [s]
			l1events	1299833	Number of level 1 events

2.1.4 Events

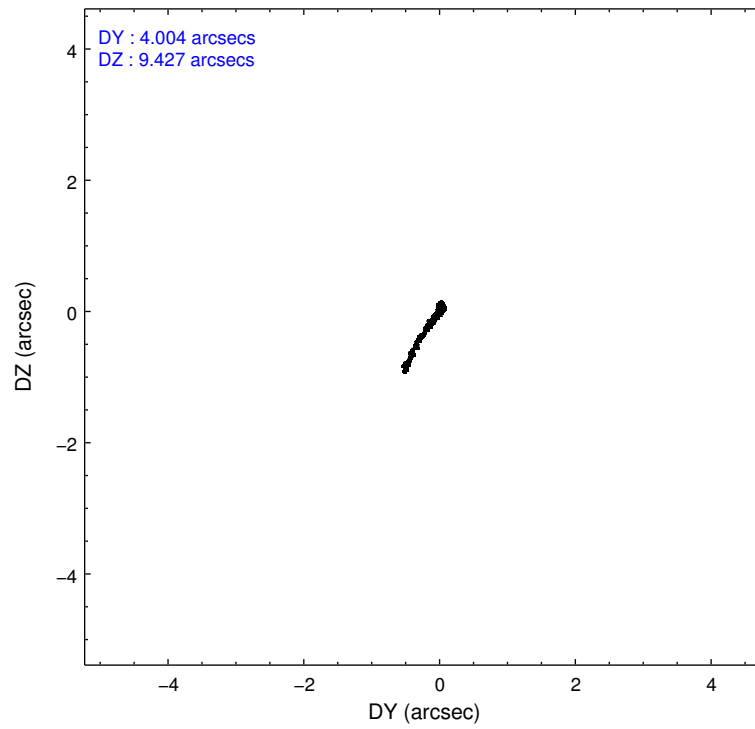
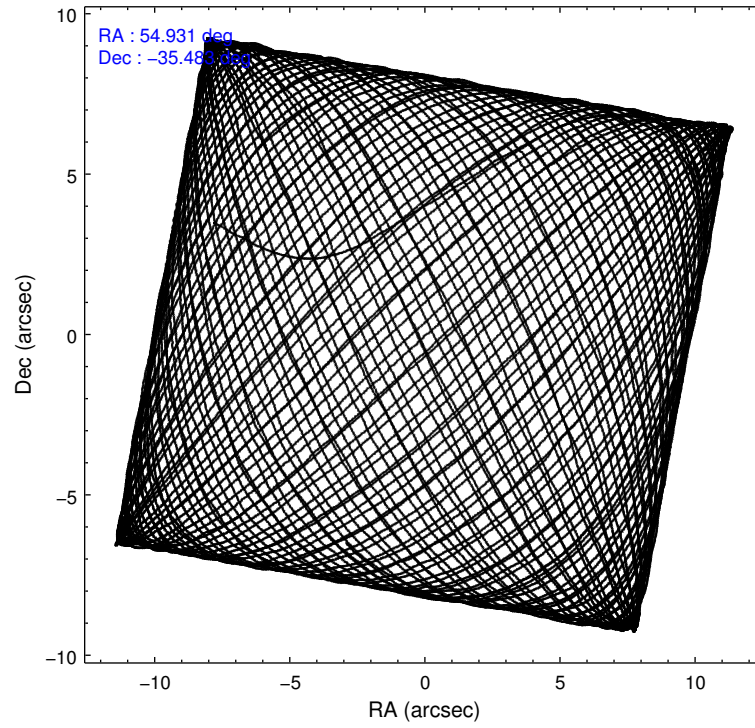
	ccd 0	ccd 1	ccd 2	ccd 3	ccd 6
level 1 events	245734	237834	287344	262969	265952
rejected events	203538	200191	242974	230341	230408
rejected %	82%	84%	84%	87%	86%

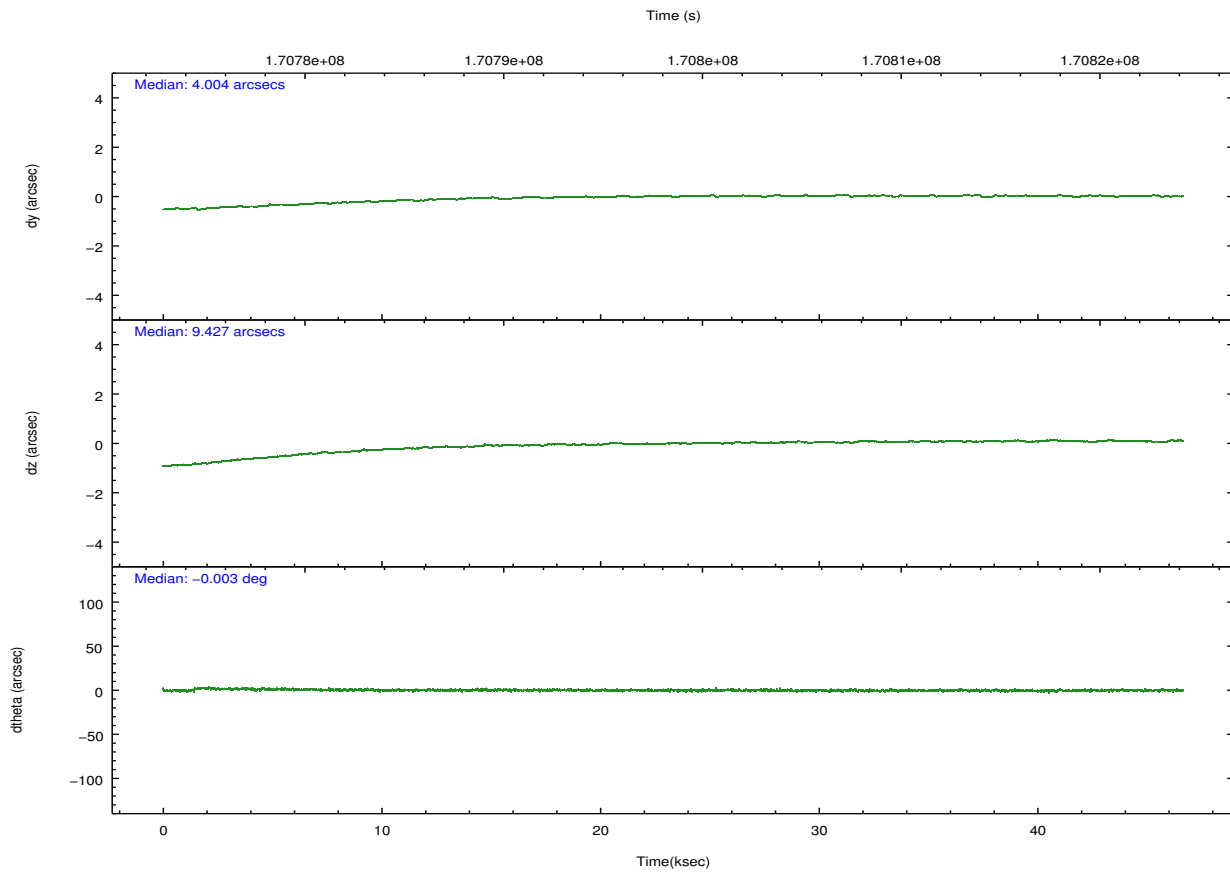
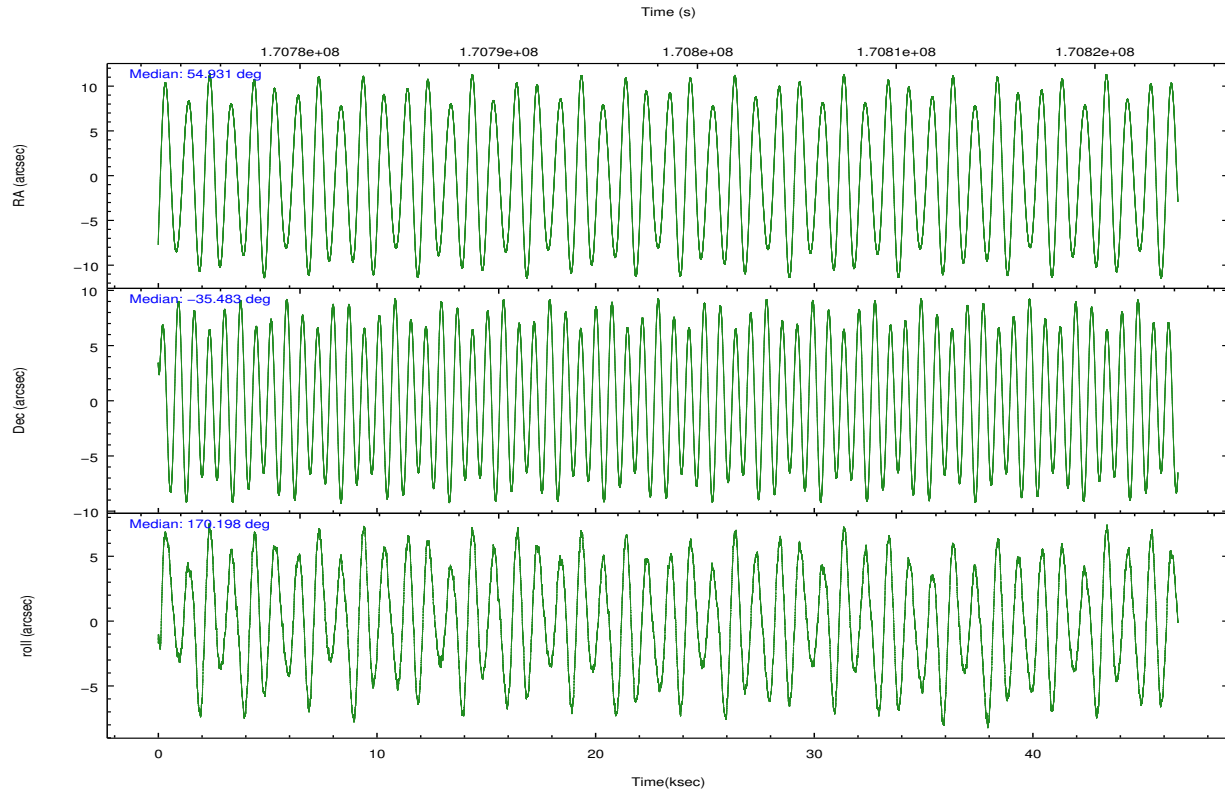
	ccd 0	ccd 1	ccd 2	ccd 3	ccd 6
grade 0 events	23469	18945	24761	17072	17449
	9%	7%	8%	6%	6%
grade 1 events	184	106	197	141	124
	0%	0%	0%	0%	0%
grade 2 events	8272	7063	8855	5686	7406
	3%	2%	3%	2%	2%
grade 3 events	3065	3107	2886	2761	2860
	1%	1%	1%	1%	1%
grade 4 events	2993	3127	3466	2754	2786
	1%	1%	1%	1%	1%
grade 5 events	7480	7959	7151	8214	8458
	3%	3%	2%	3%	3%
grade 6 events	4696	5675	4751	4607	5311
	1%	2%	1%	1%	1%
grade 7 events	195575	191852	235277	221734	221558
	79%	80%	81%	84%	83%

2.2 Compared Parameters

Parameter	Planned	Actual	Parameter	Planned	Actual
Instrument	ACIS	ACIS	Obspar format version number	7	7
Detector	ACIS-01236	ACIS-01236	Obspar file type	PREDICTED	ACTUAL
Grating	NONE	NONE	Obspar update status	NONE	UPDATED
Data mode	VFAINT	VFAINT	Number of optional ACIS chips dropped	0	0
Observation mode	POINTING	POINTING	On-chip summing requested	N	N
[deg] Pointing RA	54.962567	54.93109272677965	Subarray requested	NONE	NONE
[deg] Pointing Dec	-35.473734	-35.48330110473543	Alternating exposures requested	N	N
[deg] Pointing Roll	170.015506	170.2059233246452	[s] Primary exposure time	0.000000	3.1
[mm] SIM focus pos	-0.782348	-0.7809083437167272			
[mm] SIM defocus	0	0.001439871863259334			
[mm] SIM translation stage pos	-233.592463	-233.5874344608287			
[mm] SIM translation stage offset	0	-0.005018542100998502			
[s] Observation start time (MET)	170775334.184000	170774201.11513			
Observation start date	2003-05-31T13:34:30	2003-05-31T13:16:41			
[s] Observation end time (MET)	170821834.184000	170821967.65466			
Observation end date	2003-06-01T02:29:30	2003-06-01T02:32:47			
Read mode	TIMED	TIMED			

2.3 Aspect



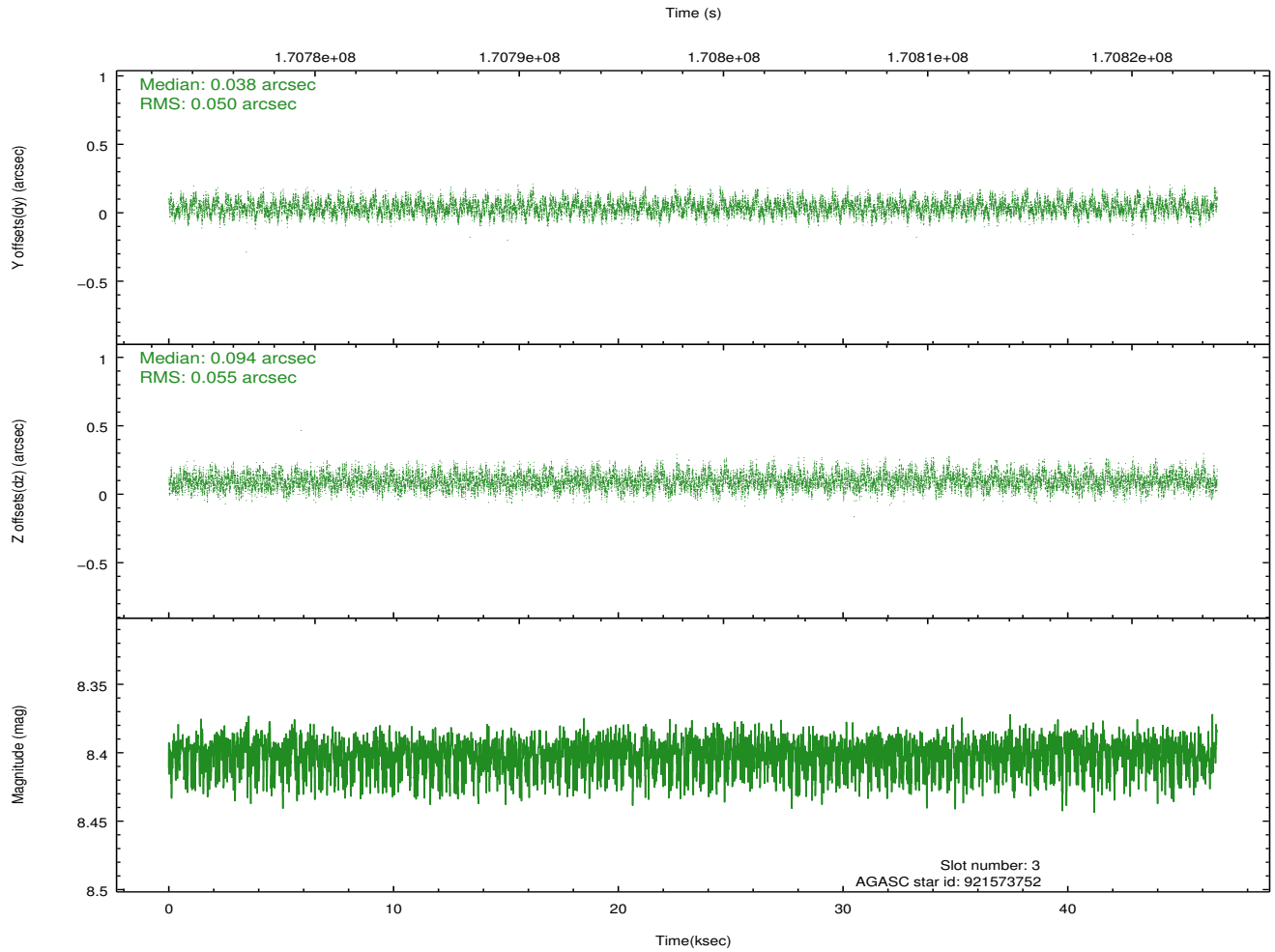
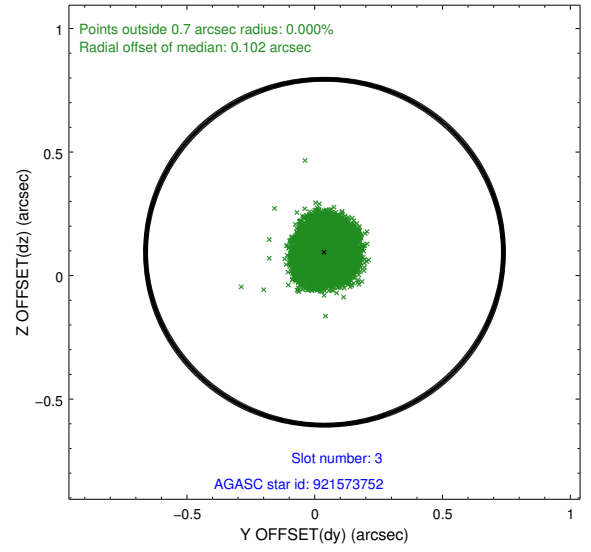
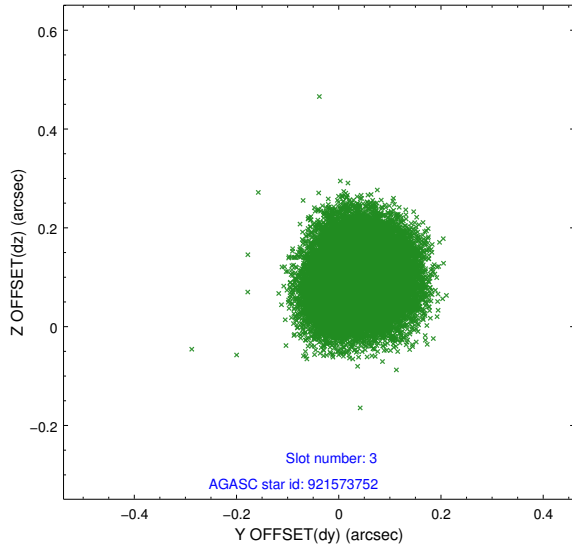


Slot Statistics

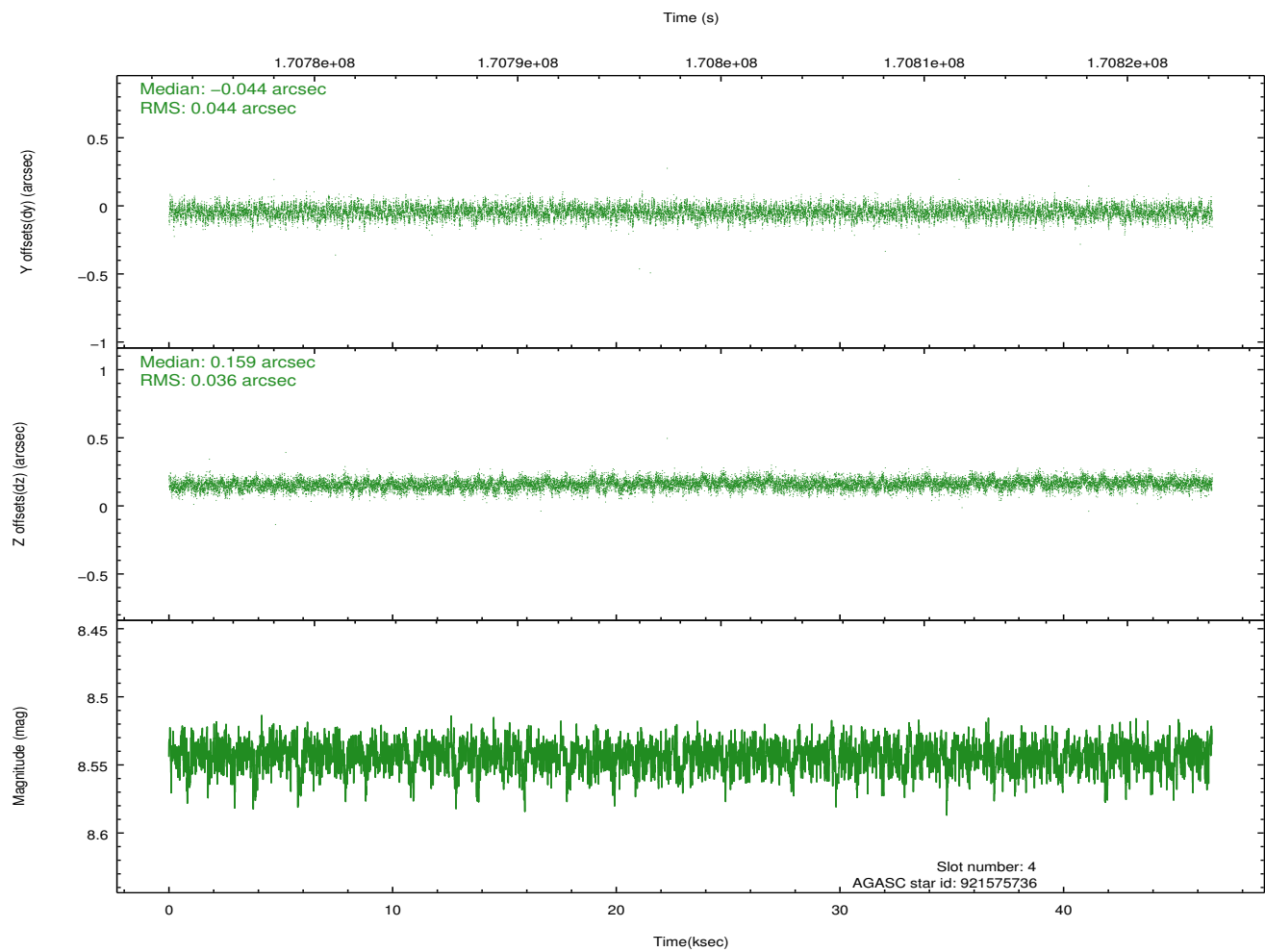
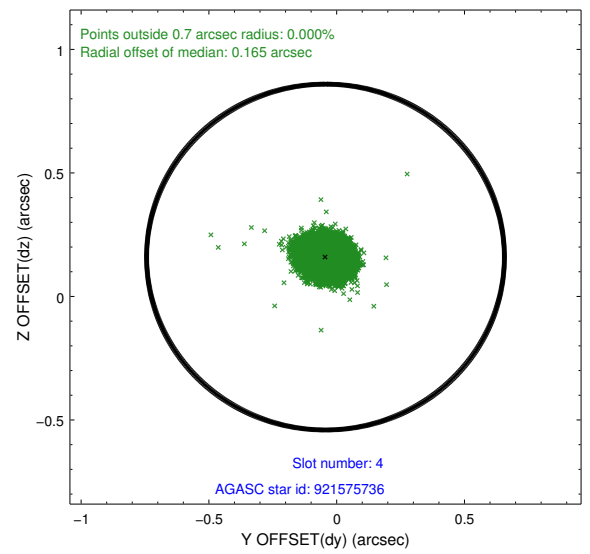
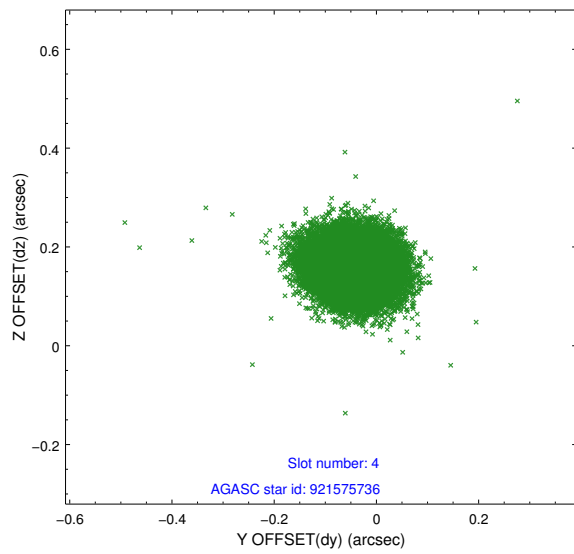
slot	status	id	mag	n_pts	med_dy	med_dz	dr1	dr2	ra	dec	mean_y	mean_z
0	FID	ACIS-I-2	7.14	11375	-0.046	-0.059	0.011	0.022	0.000000	0.000000	-758.37	-839.20
1	FID	ACIS-I-4	7.17	11375	0.085	0.049	0.008	0.017	0.000000	0.000000	2155.81	1067.12
2	FID	ACIS-I-5	7.23	11376	-0.139	0.078	0.010	0.018	0.000000	0.000000	-1812.32	1064.94
3	GUIDE	921573752	8.40	22750	0.038	0.094	0.081	0.126	55.297577	-34.906150	-619.48	-2182.03
4	GUIDE	921575736	8.54	22749	-0.044	0.159	0.060	0.097	54.586331	-34.827401	1498.64	-2096.33
5	GUIDE	921965624	8.63	22750	0.018	-0.083	0.074	0.117	54.900706	-35.940077	-113.37	1684.70
6	GUIDE	921966544	7.91	22753	0.030	-0.107	0.055	0.089	54.743508	-35.636012	530.16	687.52
7	GUIDE	921970112	9.58	22741	-0.037	-0.058	0.121	0.202	54.291262	-35.695592	1793.43	1133.88

2.4 Star Slots

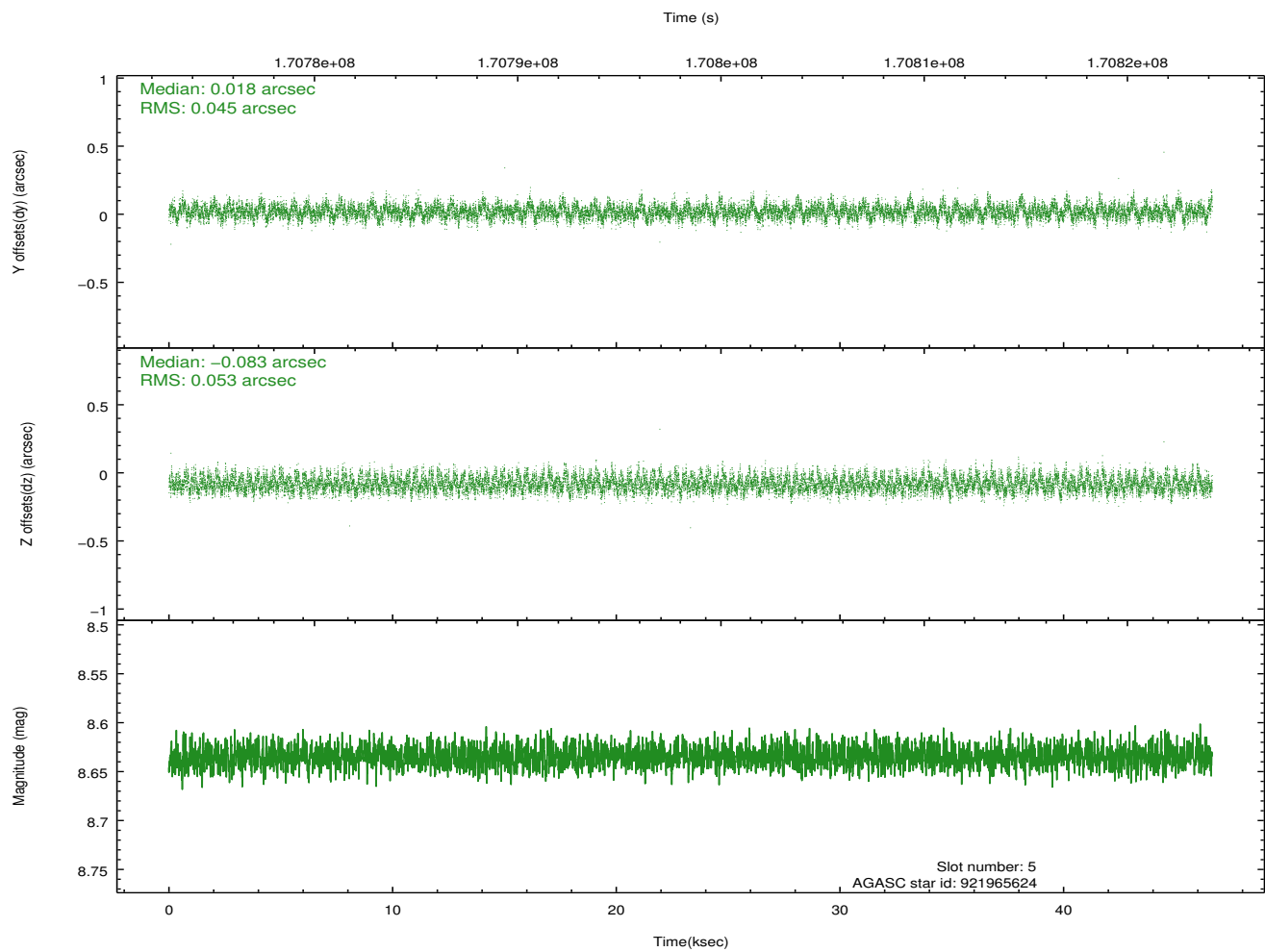
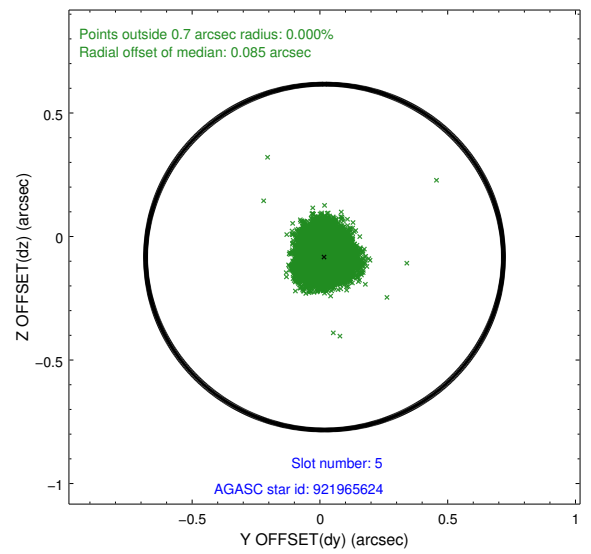
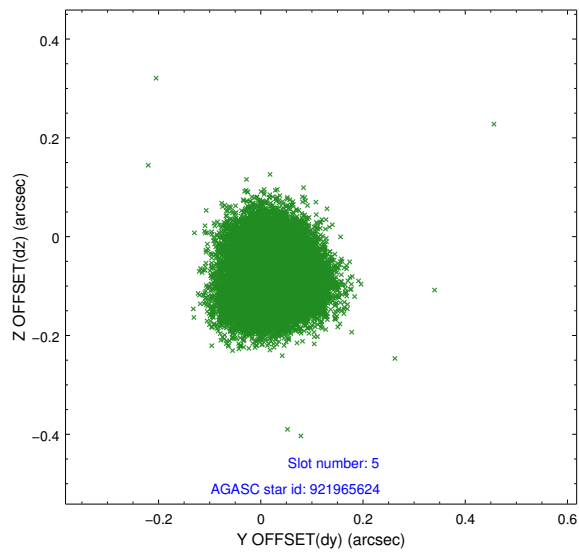
2.4.1 Slot 3



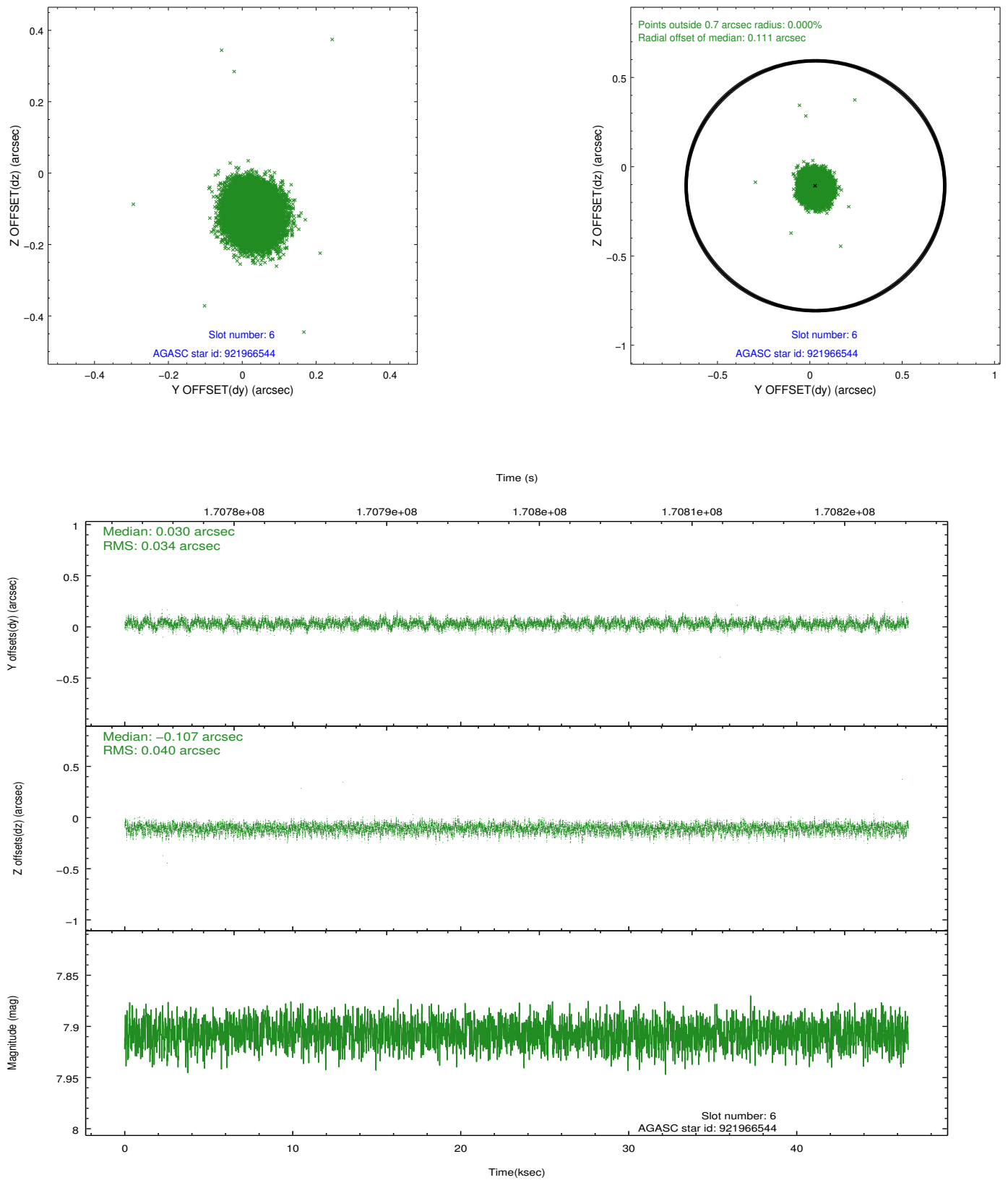
2.4.2 Slot 4



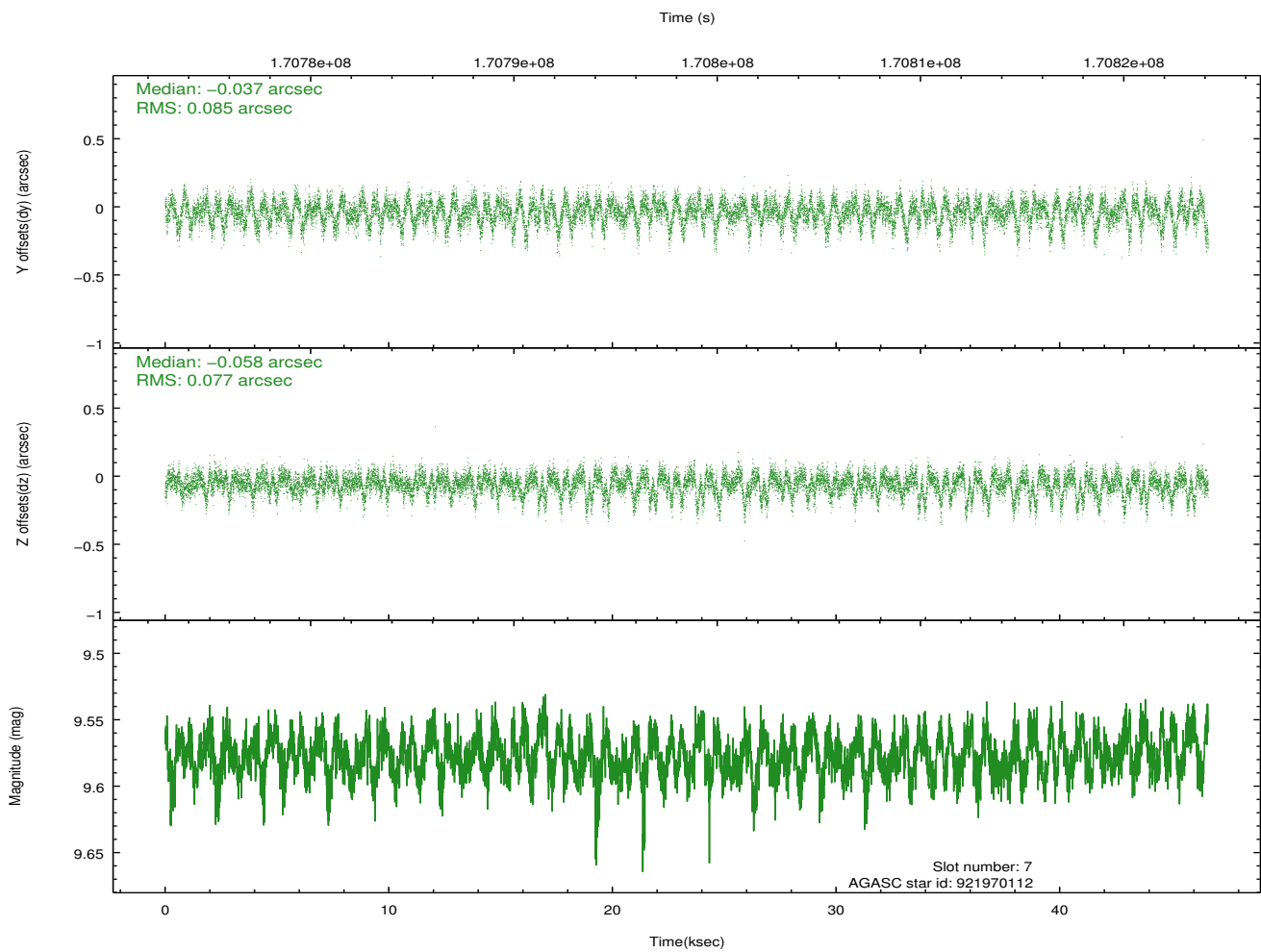
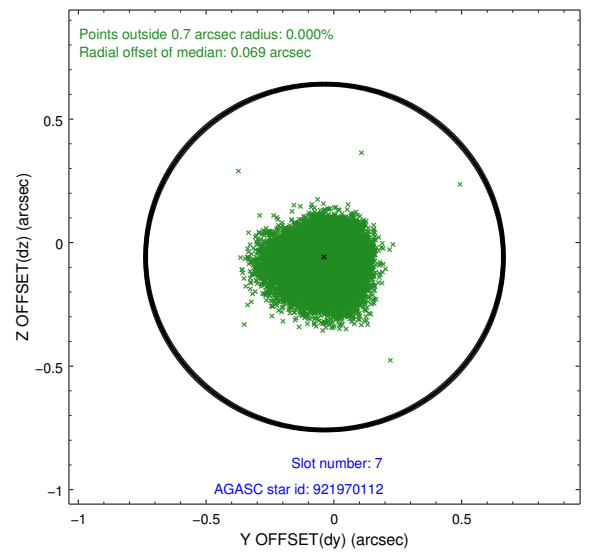
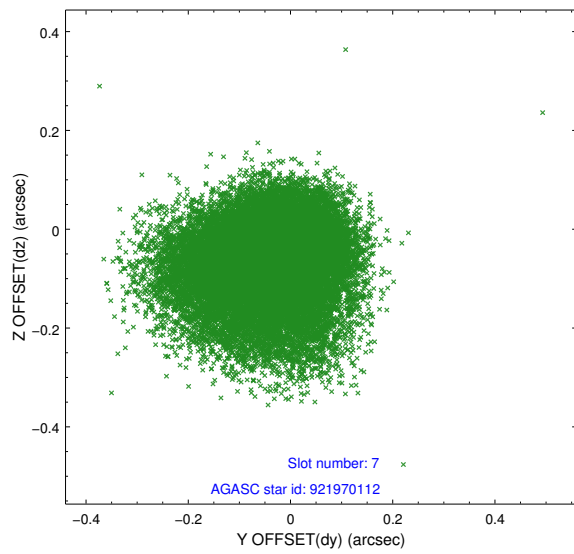
2.4.3 Slot 5



2.4.4 Slot 6

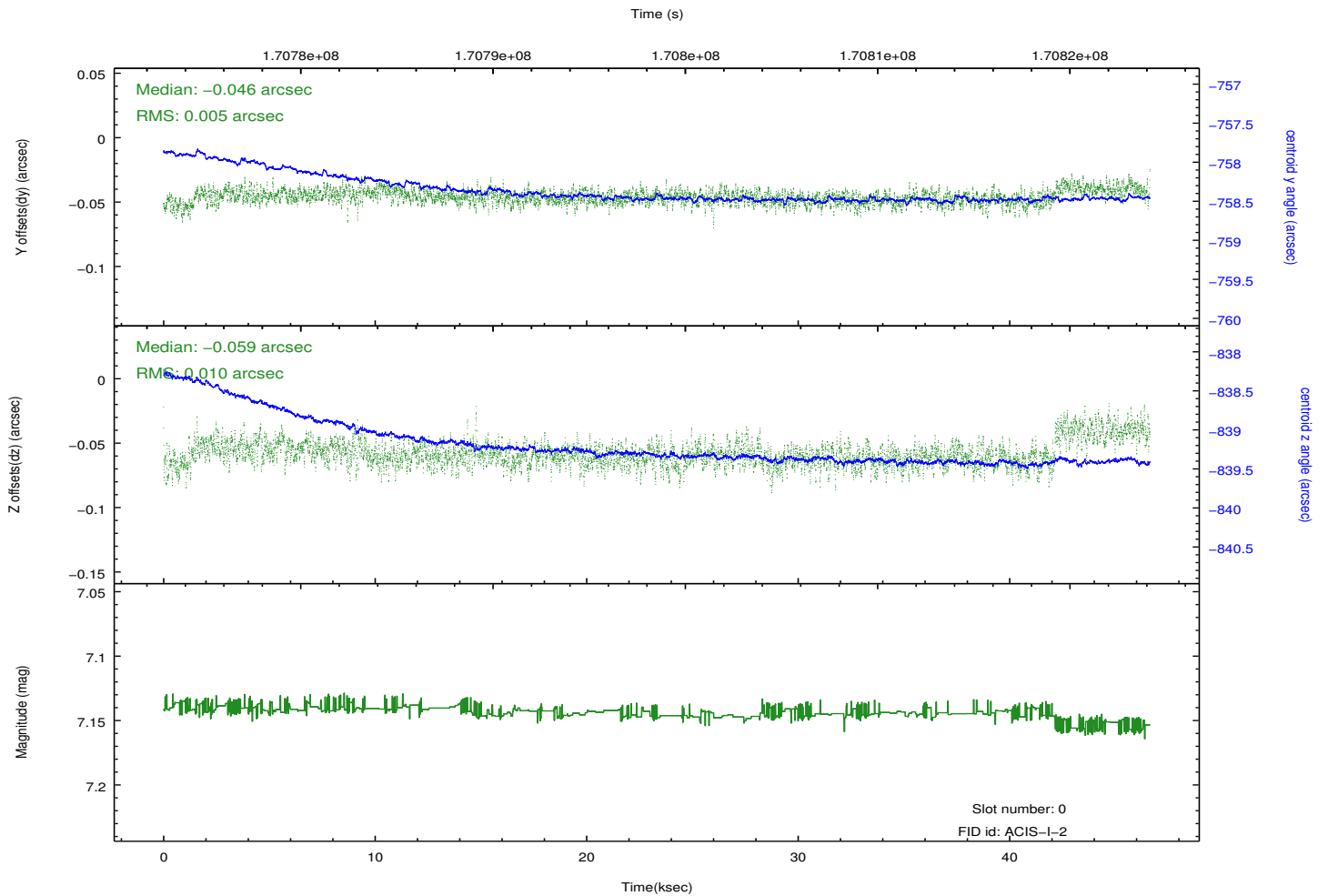
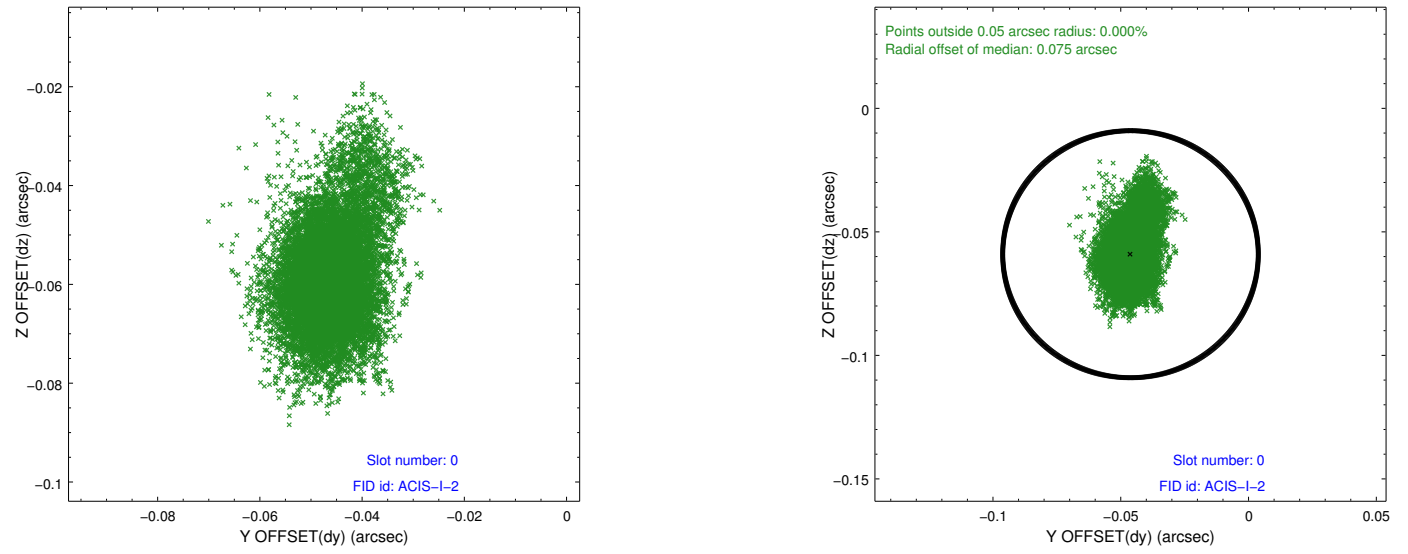


2.4.5 Slot 7

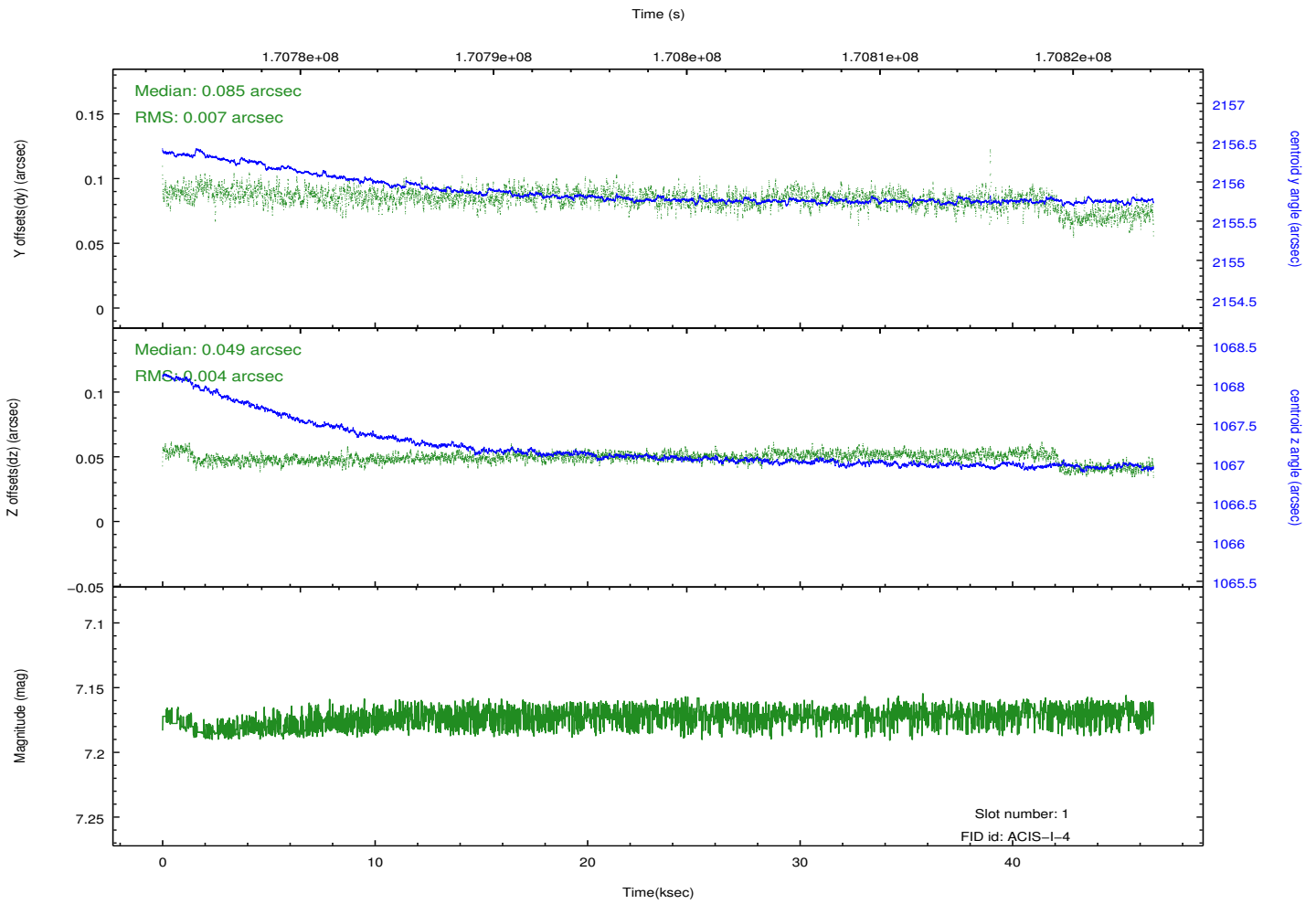
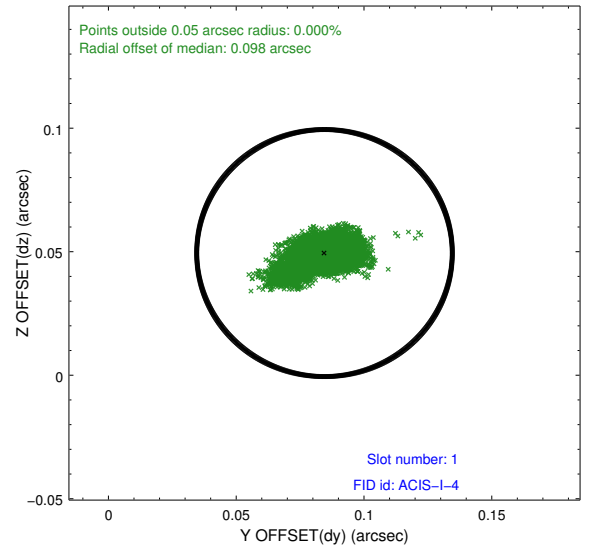
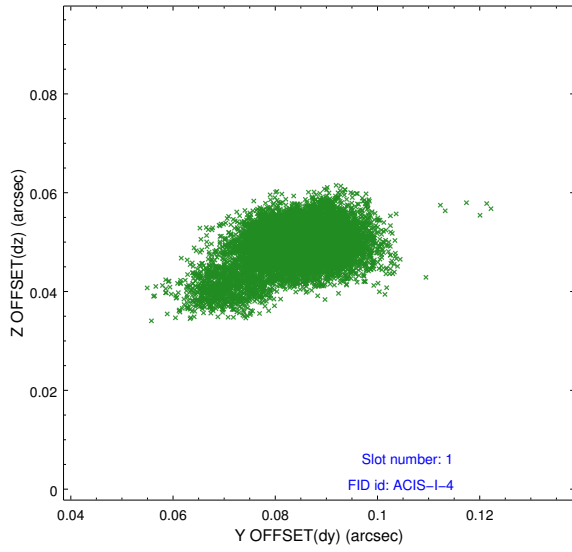


2.5 FID Slots

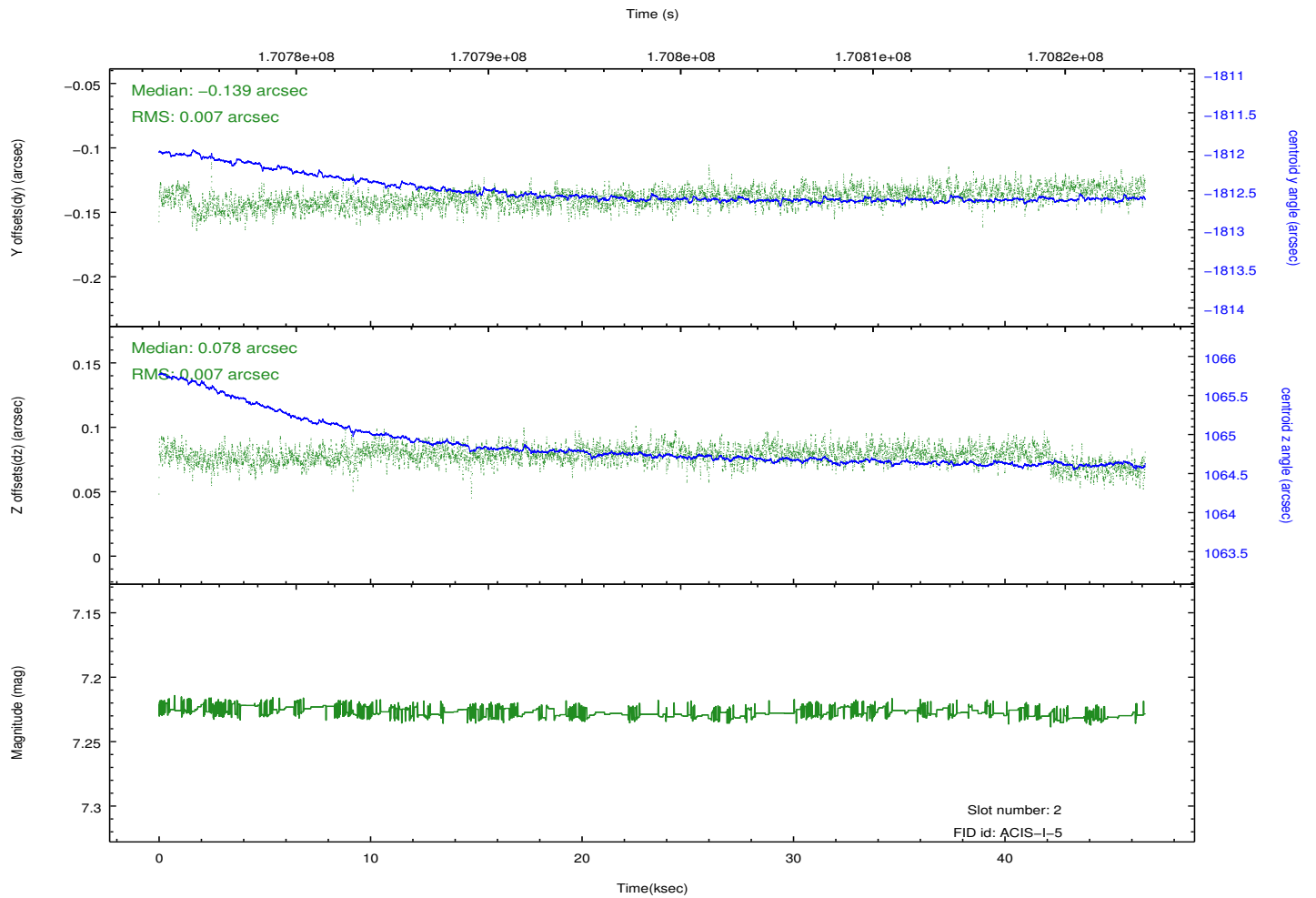
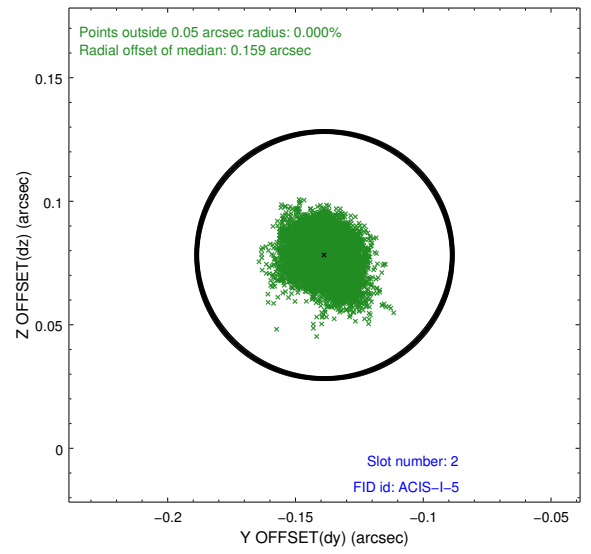
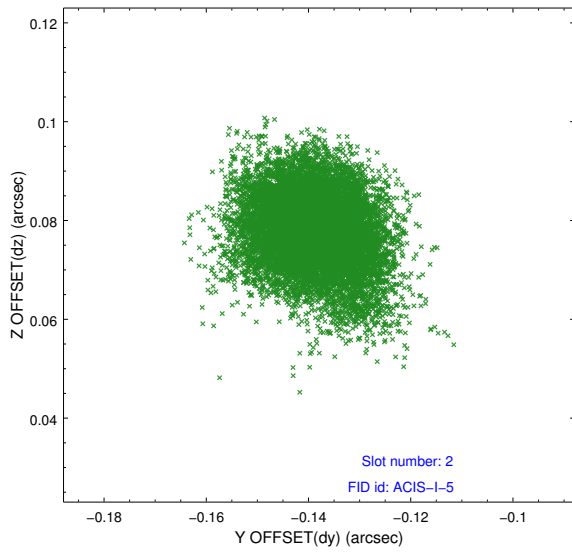
2.5.1 Slot 0



2.5.2 Slot 1



2.5.3 Slot 2



A Summary

A.1 Status

V&V Scientist	Beth Sundheim
V&V Date (YYYY-MM-DD)	2012.11.15
V&V Edition	1
V&V Disposition and Status	OK
V&V Charge Time	46.636

A.2 Comments