

V&V Reference Report

L2 ASCDS Version : 8.4.5

Observation 4286 - L2 Version 5
Chandra X-Ray Center

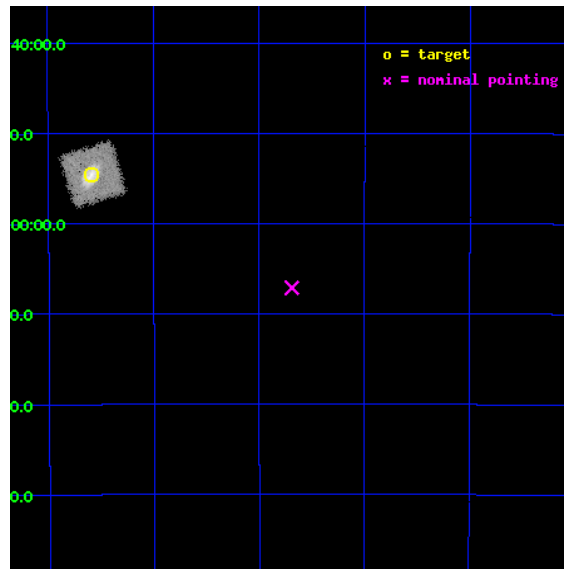
L2 Processing Date : Oct 11 2012

Contents

1	Front	2
2	OBI	3
2.1	OBI	3
2.1.1	Images	3
2.1.2	Parameters	4
2.1.3	Events	4
2.2	Compared Parameters	5
2.3	Aspect	6
2.4	Star Slots	9
2.4.1	Slot 2	9
2.4.2	Slot 3	10
2.4.3	Slot 4	11
2.4.4	Slot 5	12
2.4.5	Slot 6	13
2.4.6	Slot 7	14
2.5	FID Slots	15
2.5.1	Slot 0	15
2.5.2	Slot 1	16
A	Summary	17
A.1	Status	17
A.2	Comments	17

1 Front

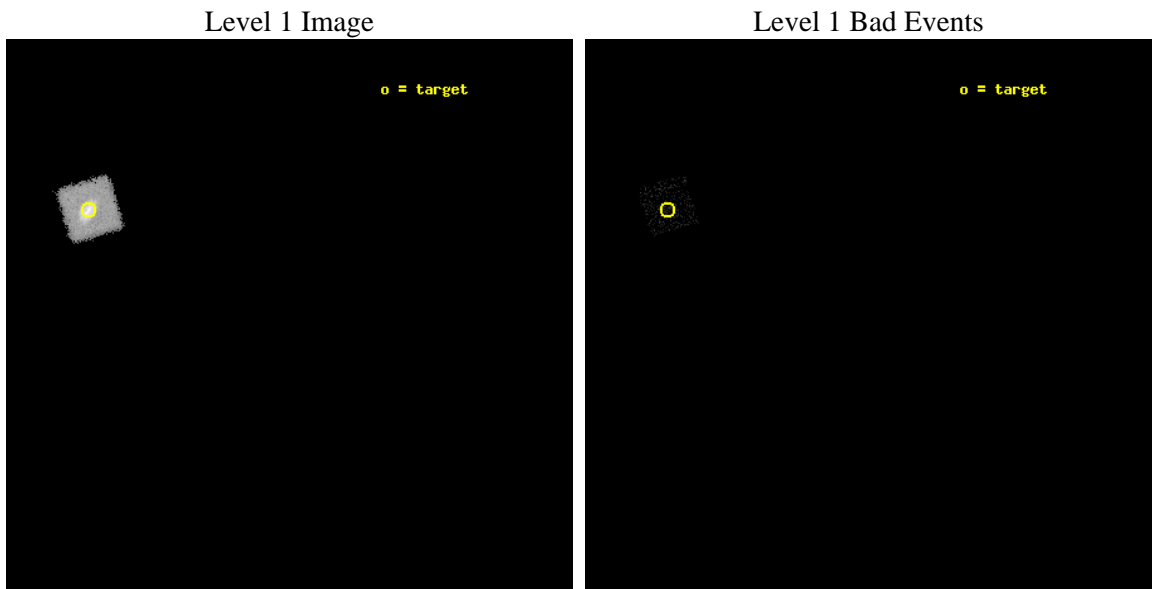
seq_num	490018	Sequence number
obs_id	4286	Observation id
title	CALIBRATION OF ACIS PARTICLE BACKGROUND AND HRC QUANTUM EFFICIENCY	
observer	DR. MAXIM MARKEVITCH	Principal investigator
object	RXJ1856.5-3754	Source name
ra_targ	284.147083	Observer's specified target RA [deg]
dec_targ	-37.909611	Observer's specified target Dec [deg]
ra_nom	283.672274	Nominal RA [deg]
dec_nom	-38.118828	Nominal Dec [deg]
roll_nom	298.458655	Nominal Roll [deg]
revision	5	Processing version of data
ontime	9856.656655699	[s]
liveltime	8359.9063420161	Ontime multiplied by DTCOR
l2events	18123	Number of level 2 events



2 OBI

2.1 OBI

2.1.1 Images



2.1.2 Parameters

obi_num	0	Obi number	sched_exp_time	10000.000000	[s] Scheduled observation exposure time
ascdsver	8.4.5	Processing system revision	ontime	9856.656655699	[s]
caldsver	4.5.2	 	l1events	24437	Number of level 1 events
date	2012-10-11T21:36:19	Date and time of file creation			
revision	5	Processing version of data			

2.1.3 Events

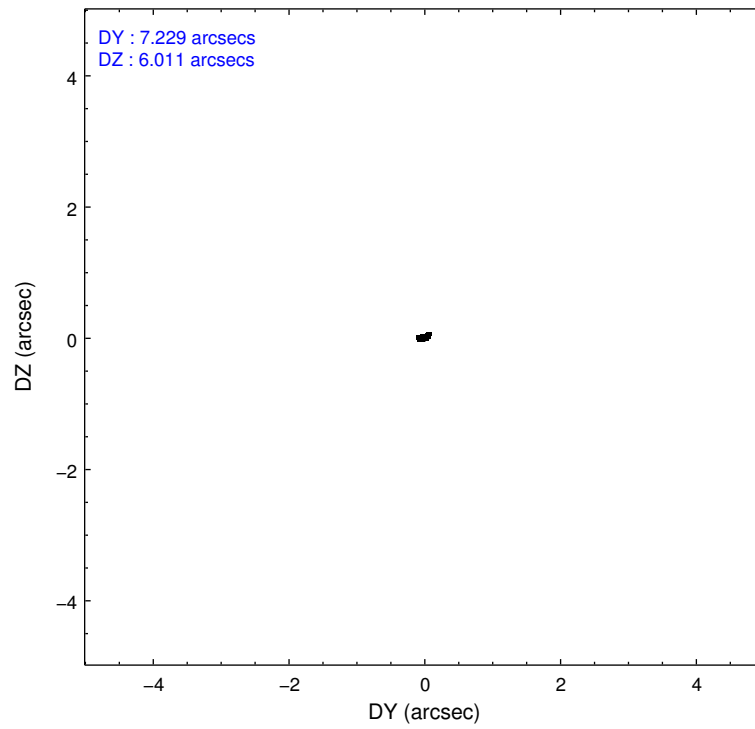
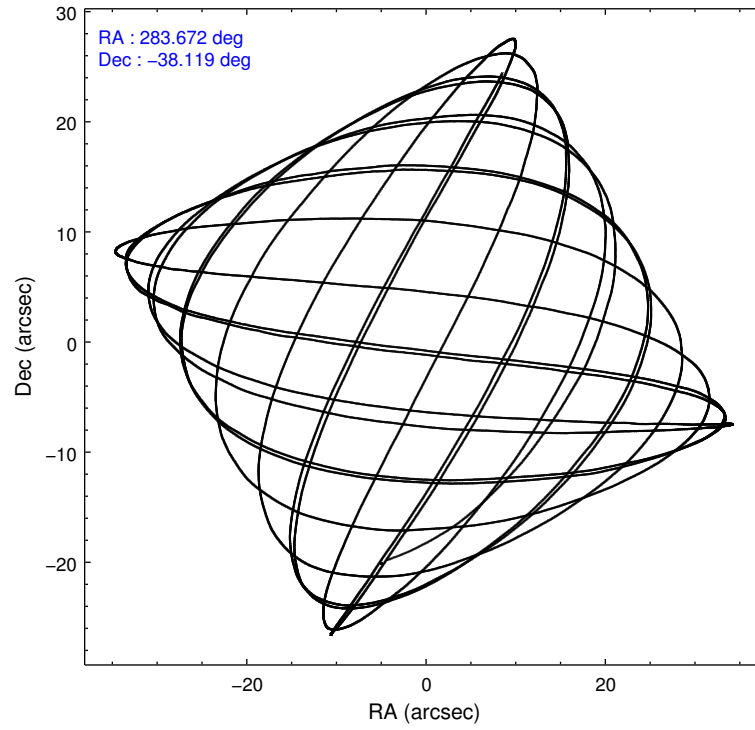
Level 1 Events

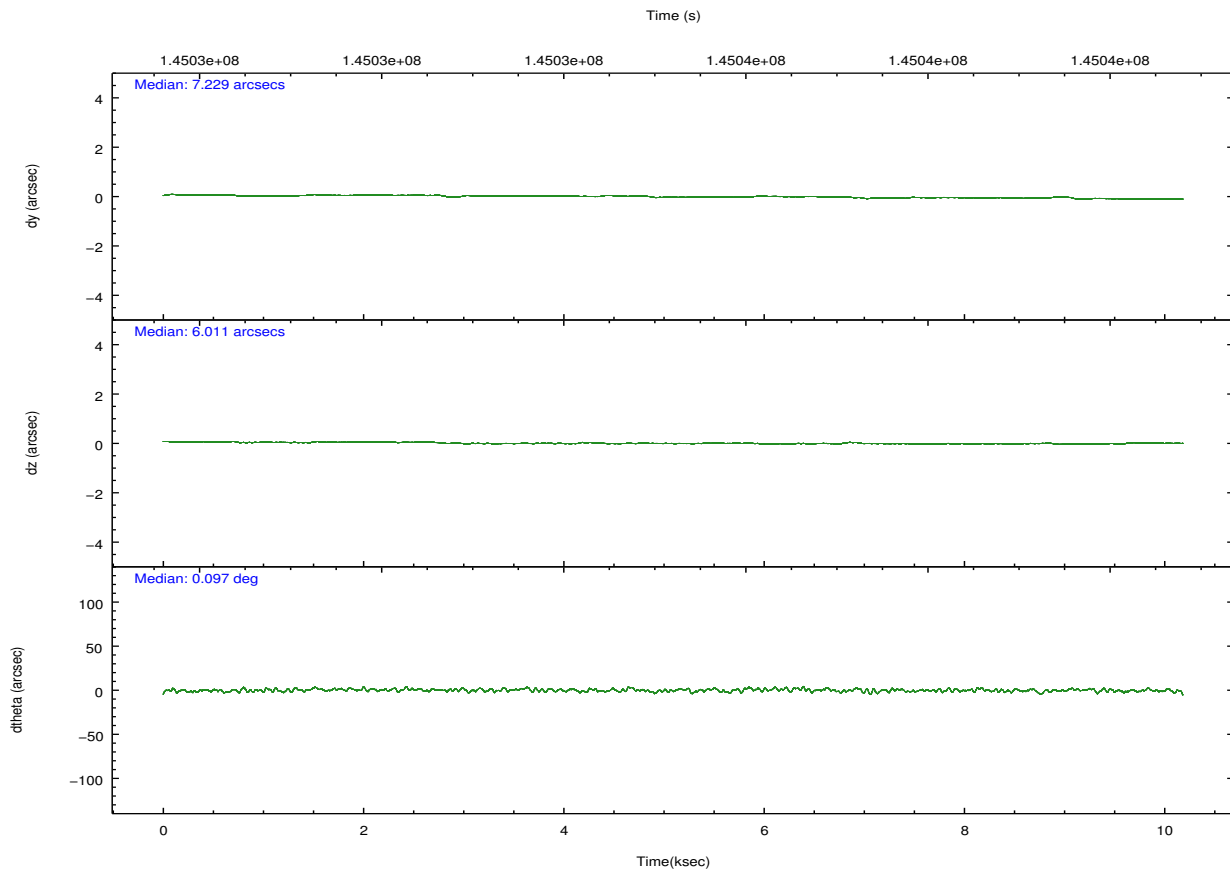
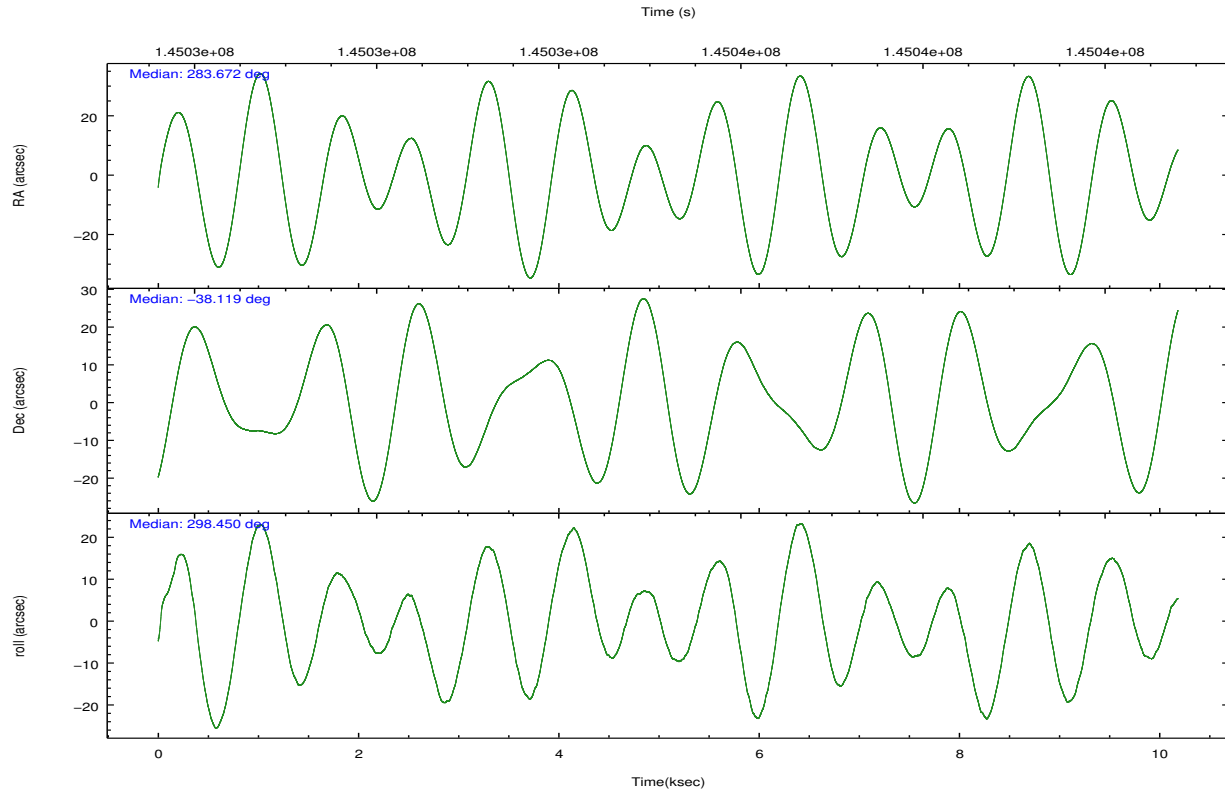
	segment 0
level 1 events	24437
rejected events	1457
rejected %	5%

2.2 Compared Parameters

Parameter	Planned	Actual	Parameter	Planned	Actual
Instrument	HRC	HRC	Obspar format version number	7	7
Detector	HRC-I	HRC-I	Obspar file type	PREDICTED	ACTUAL
Grating	NONE	NONE	Obspar update status	NONE	UPDATED
Data mode	NEXT_IN_LINE	NEXT_IN_LINE			
Observation mode	POINTING	POINTING			
[deg] Pointing RA	284.147083	283.6722748681833			
[deg] Pointing Dec	-37.909611	-38.11882820548203			
[deg] Pointing Roll	298.535750	298.4586554990342			
[mm] SIM focus pos	-1.040293	-1.038866356238299			
[mm] SIM defocus	0	0.001426264420575141			
[mm] SIM translation stage pos	51.985494	51.99352612095925			
[mm] SIM translation stage offset	75	74.99196277064232			
[s] Observation start time (MET)	145030294.184000	145029524.62633			
Observation start date	2002-08-06T14:10:30	2002-08-06T13:58:44			
[s] Observation end time (MET)	145040294.184000	145041271.12681			
Observation end date	2002-08-06T16:57:10	2002-08-06T17:14:31			

2.3 Aspect



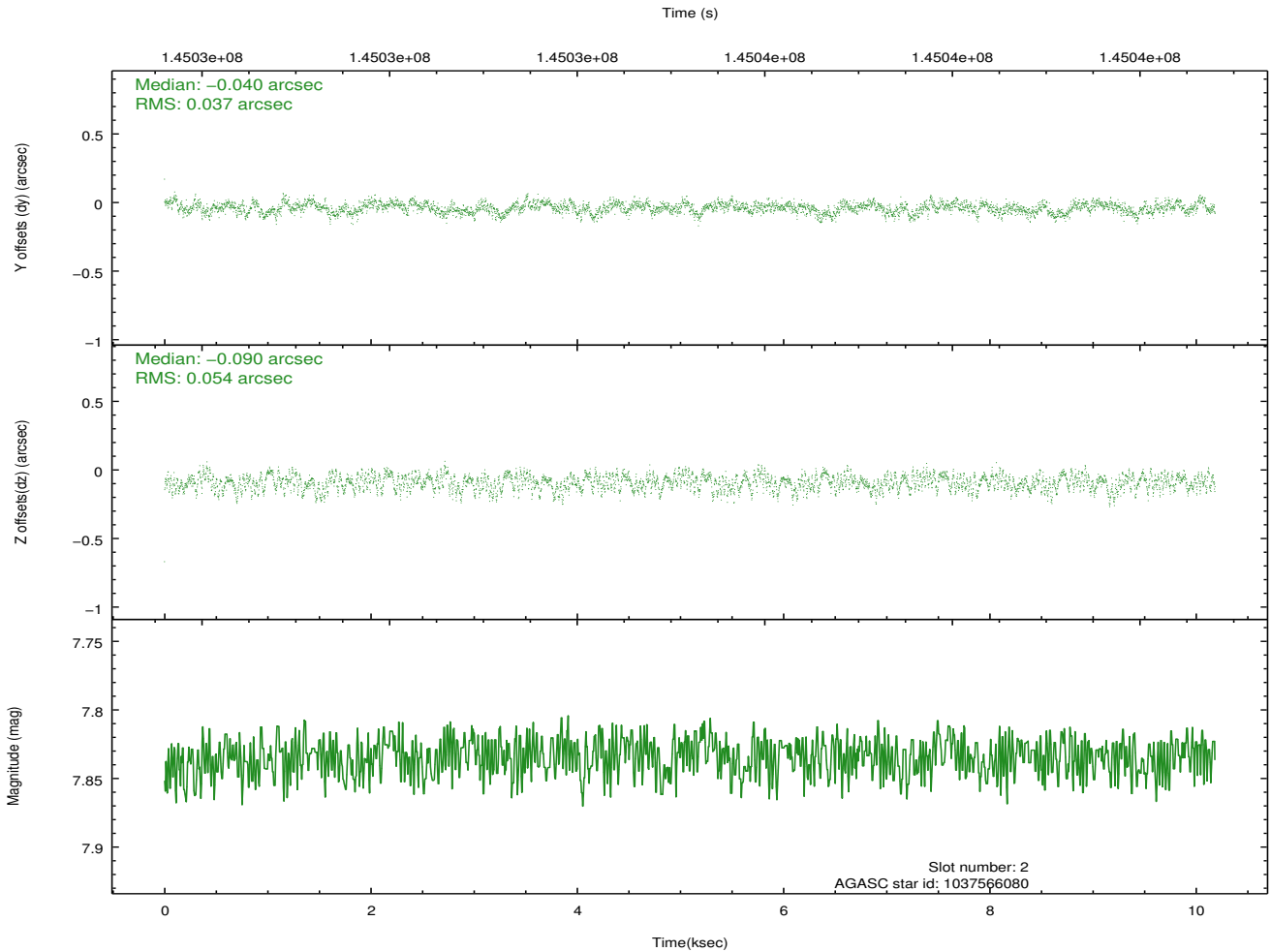
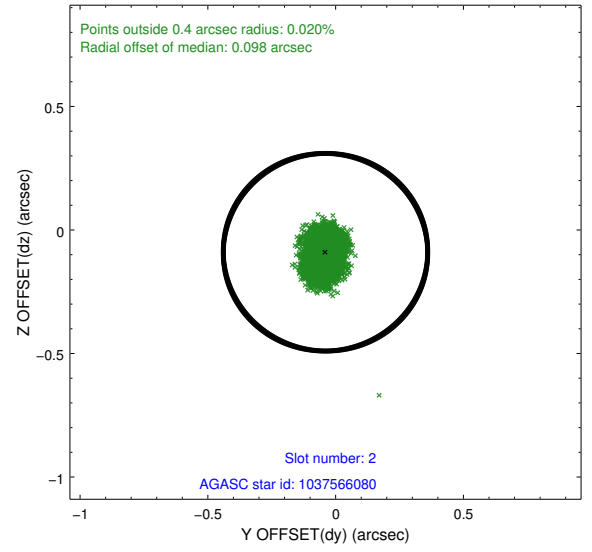
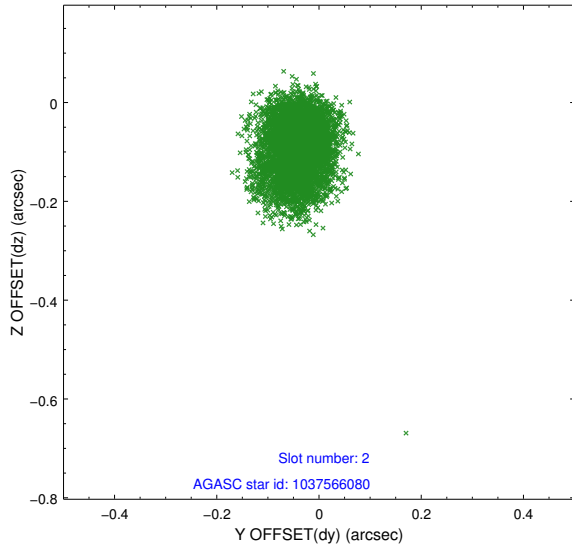


Slot Statistics

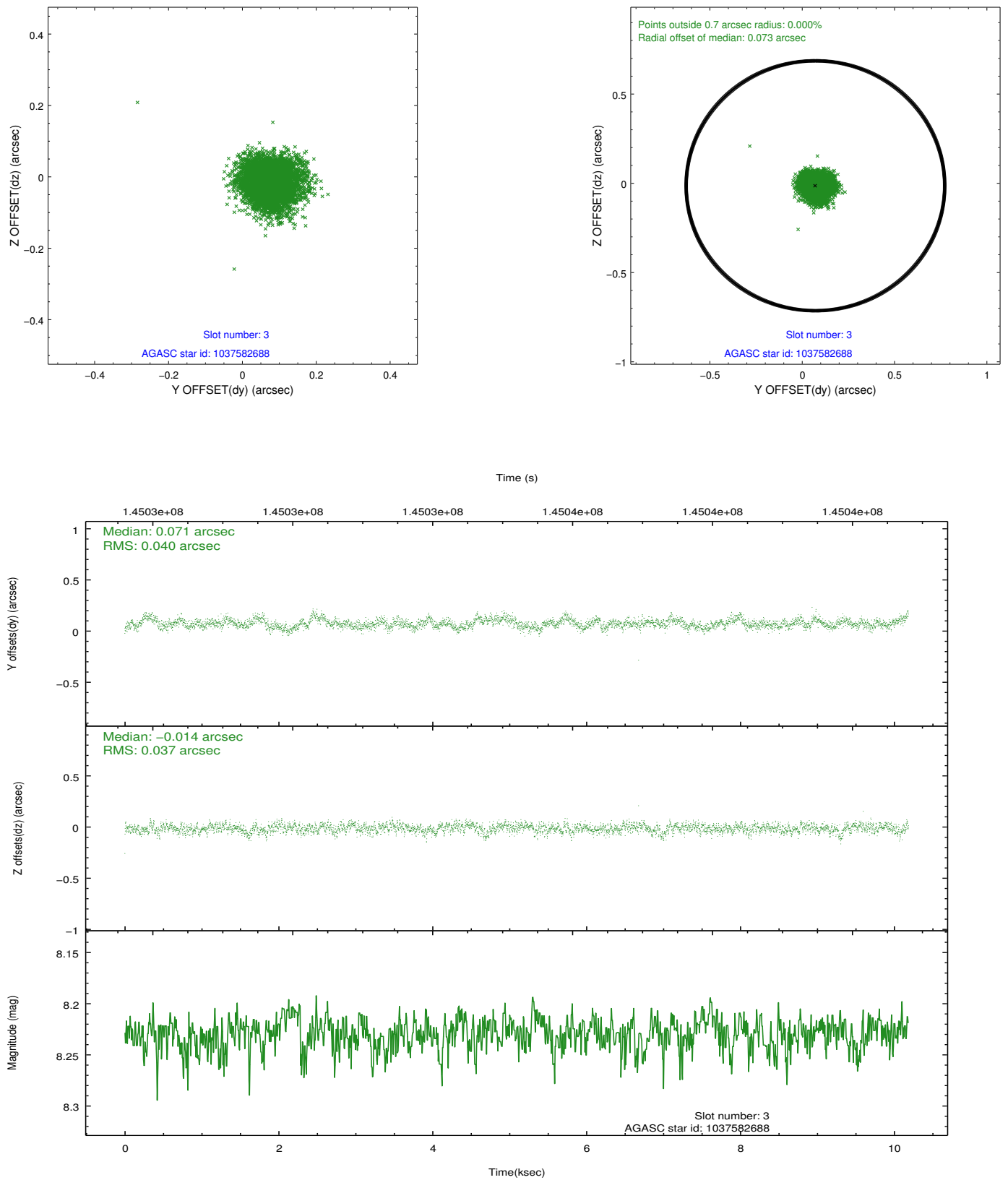
slot	status	id	mag	n_pts	med_dy	med_dz	dr1	dr2	ra	dec	mean_y	mean_z
0	FID	HRC-I-1	6.78	2484	-0.602	-0.028	0.004	0.008	0.000000	0.000000	-761.48	244.04
1	FID	HRC-I-2	6.91	2484	0.681	-0.026	0.004	0.008	0.000000	0.000000	849.05	245.22
2	GUIDE	1037566080	7.83	4969	-0.040	-0.090	0.070	0.112	283.069097	-37.947159	-1271.83	-1160.99
3	GUIDE	1037582688	8.23	4969	0.071	-0.014	0.058	0.096	284.131110	-38.409051	1623.50	686.60
4	GUIDE	1037567328	8.85	4968	-0.026	-0.032	0.070	0.116	284.052016	-37.647288	-887.17	1811.74
5	GUIDE	1037566152	9.54	4968	-0.039	-0.026	0.134	0.217	282.755263	-38.085809	-1250.30	-2180.86
6	GUIDE	1037567312	8.47	4968	-0.004	0.081	0.063	0.099	283.456056	-37.976515	-658.34	-244.23
7	GUIDE	1037578168	8.11	4968	0.038	0.083	0.071	0.112	284.493659	-38.169059	1363.69	2001.18

2.4 Star Slots

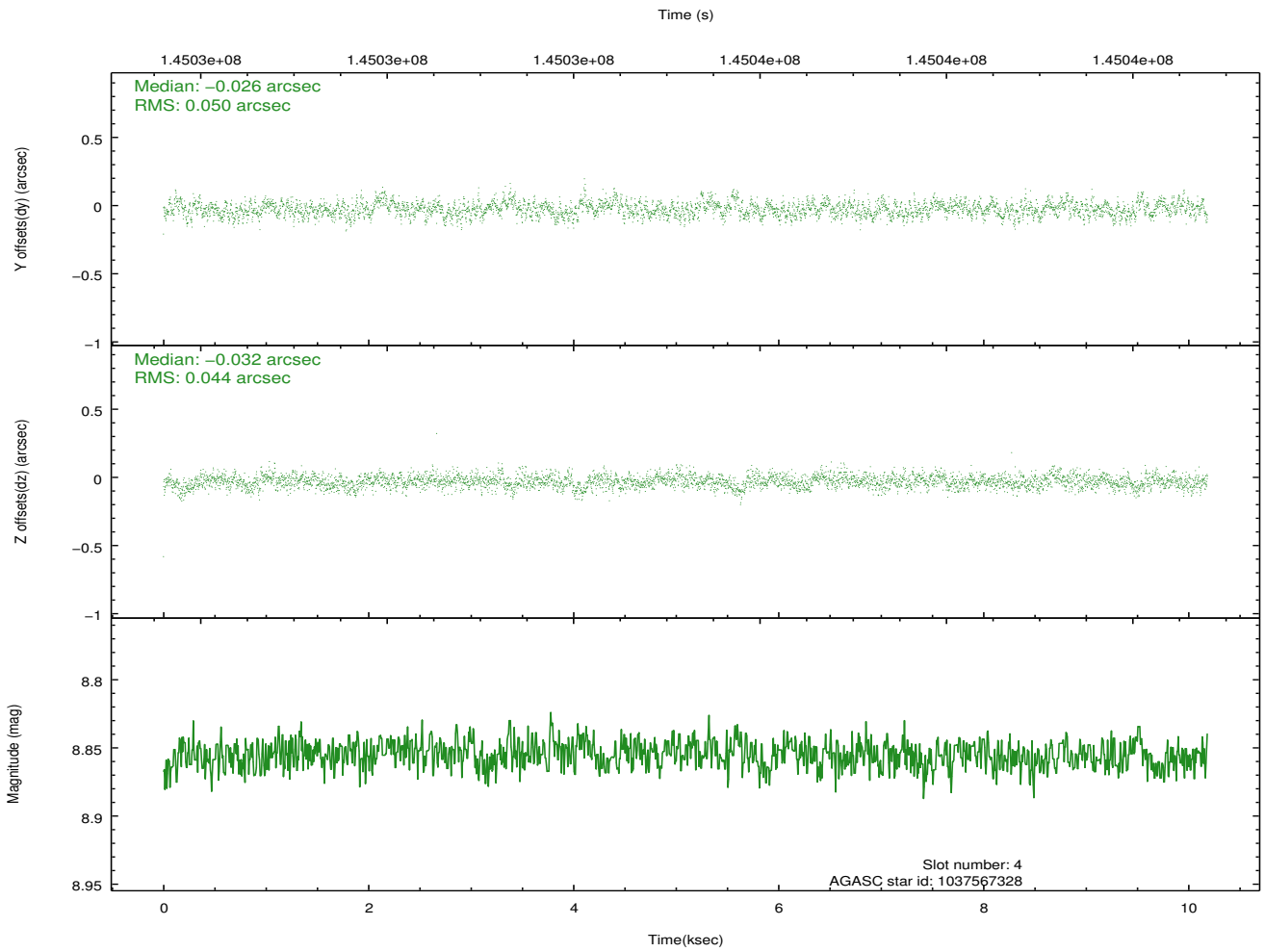
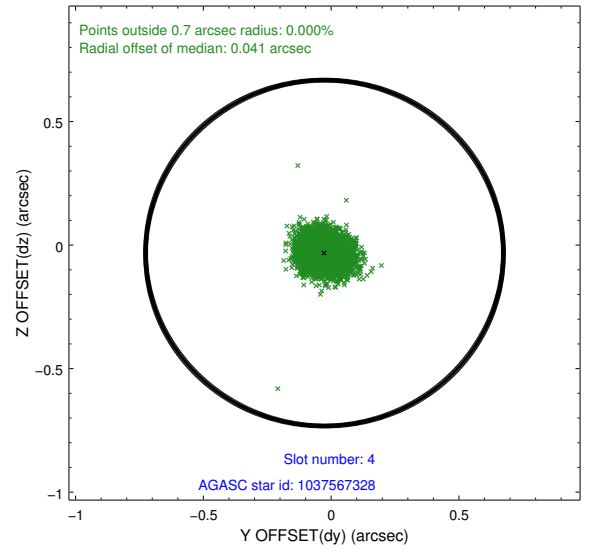
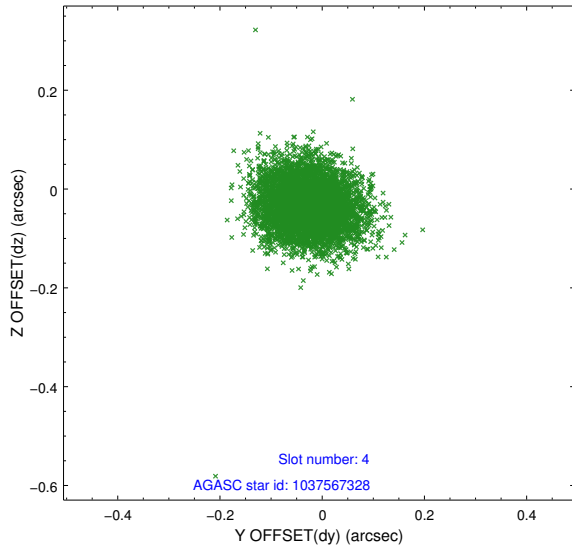
2.4.1 Slot 2



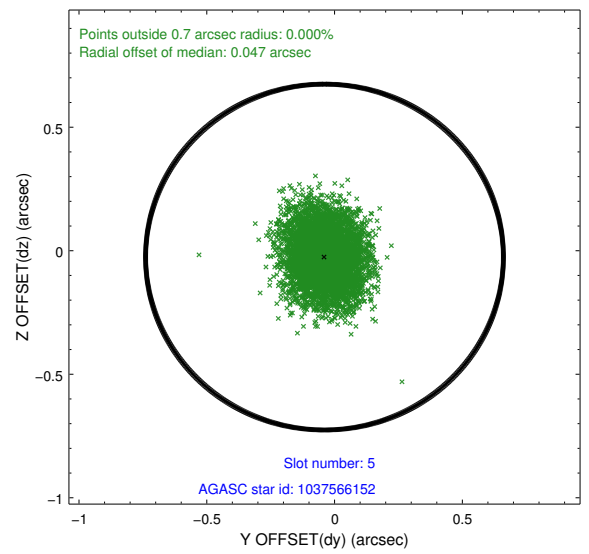
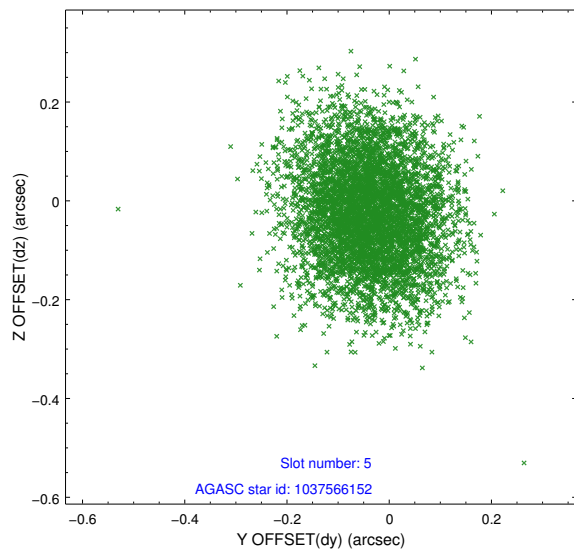
2.4.2 Slot 3



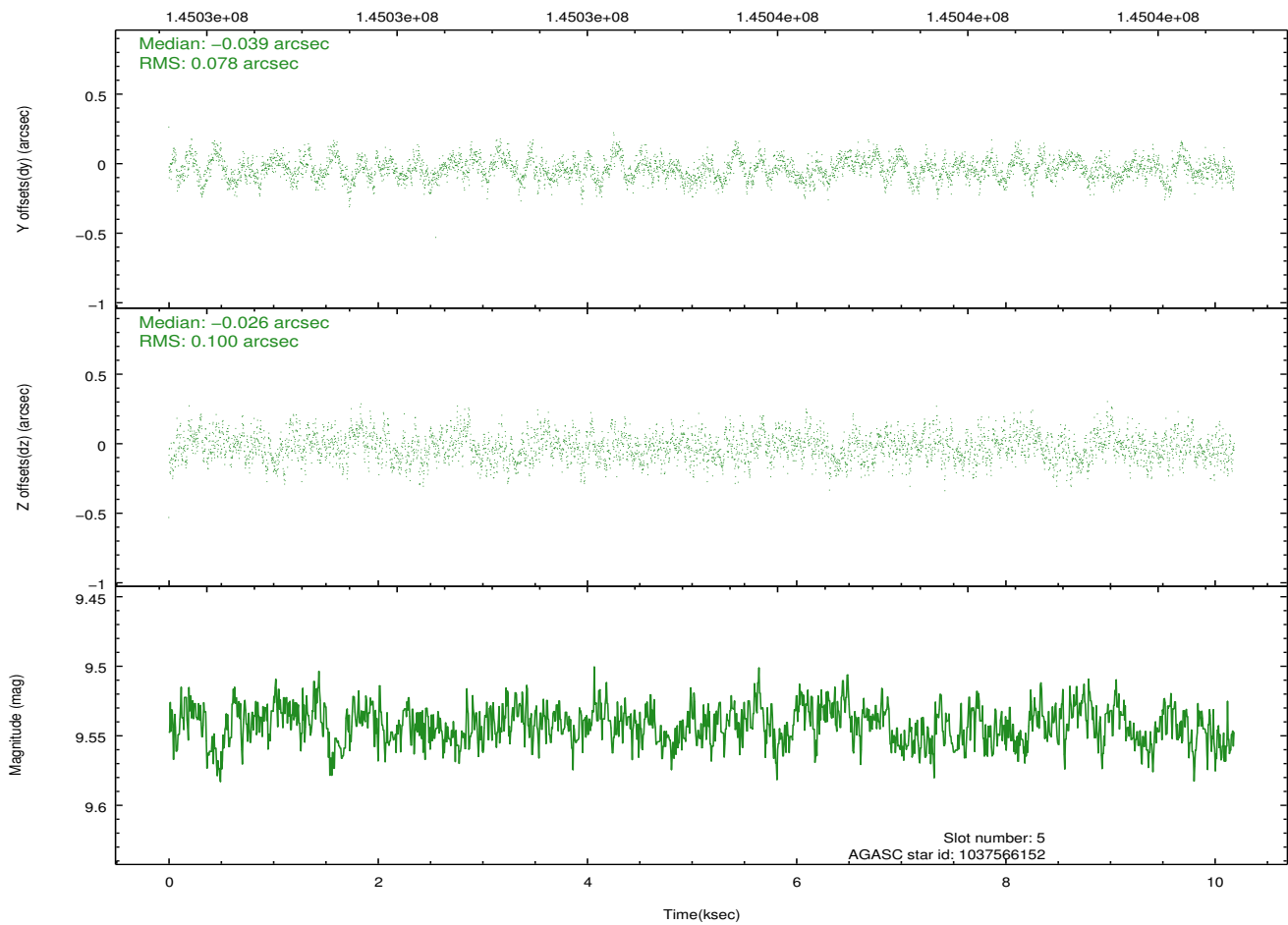
2.4.3 Slot 4



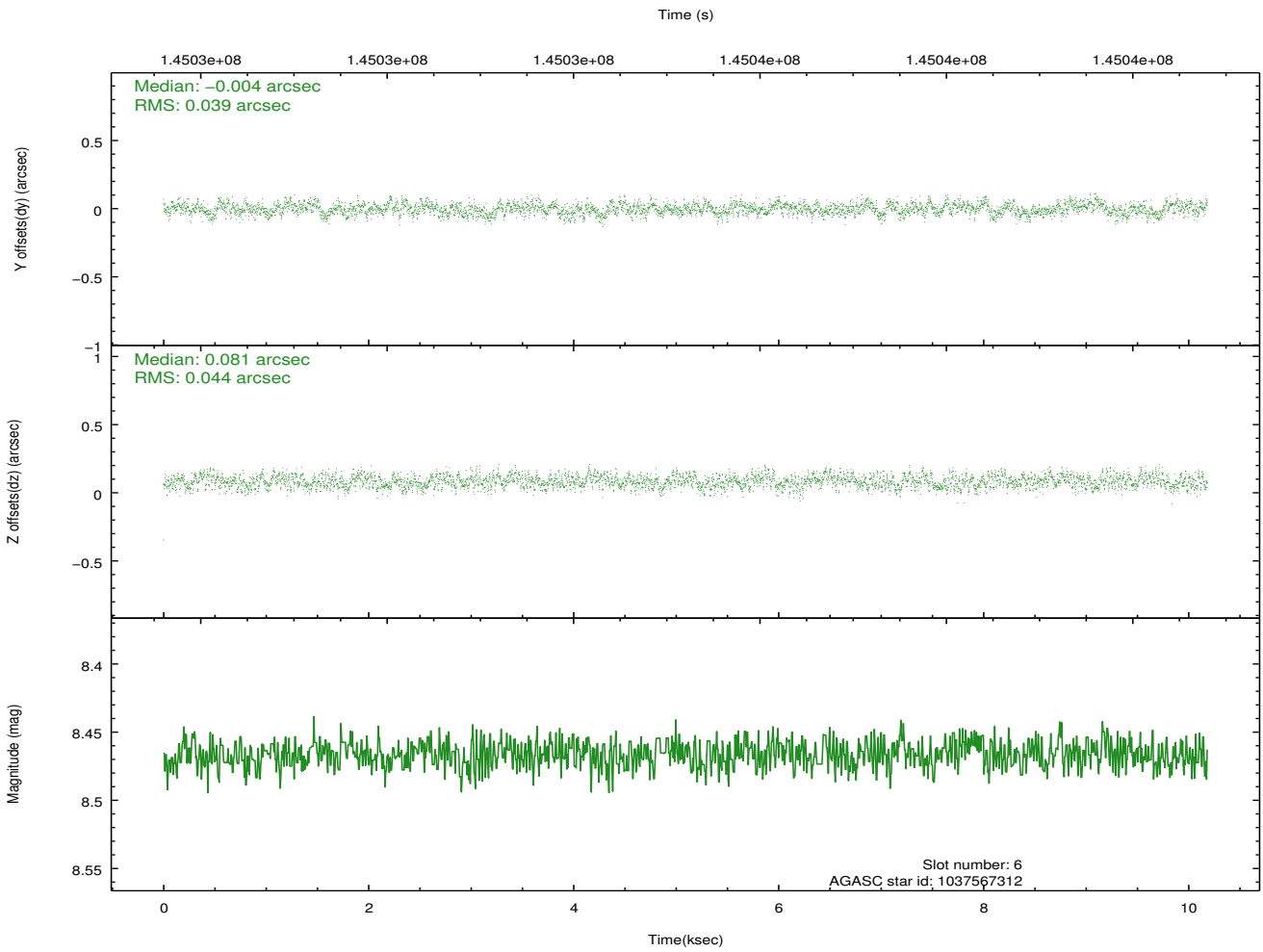
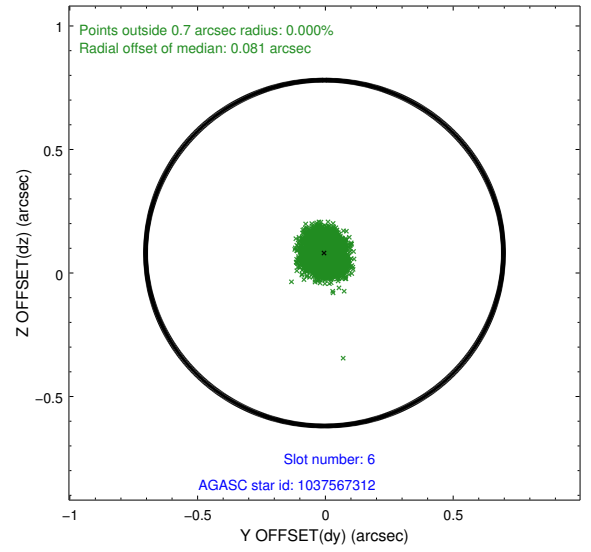
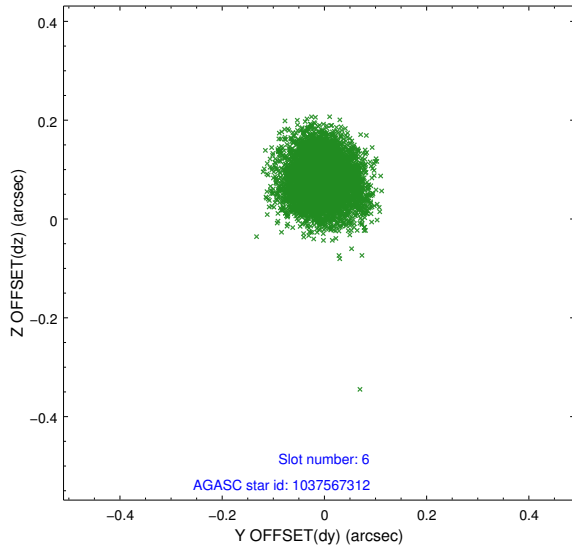
2.4.4 Slot 5



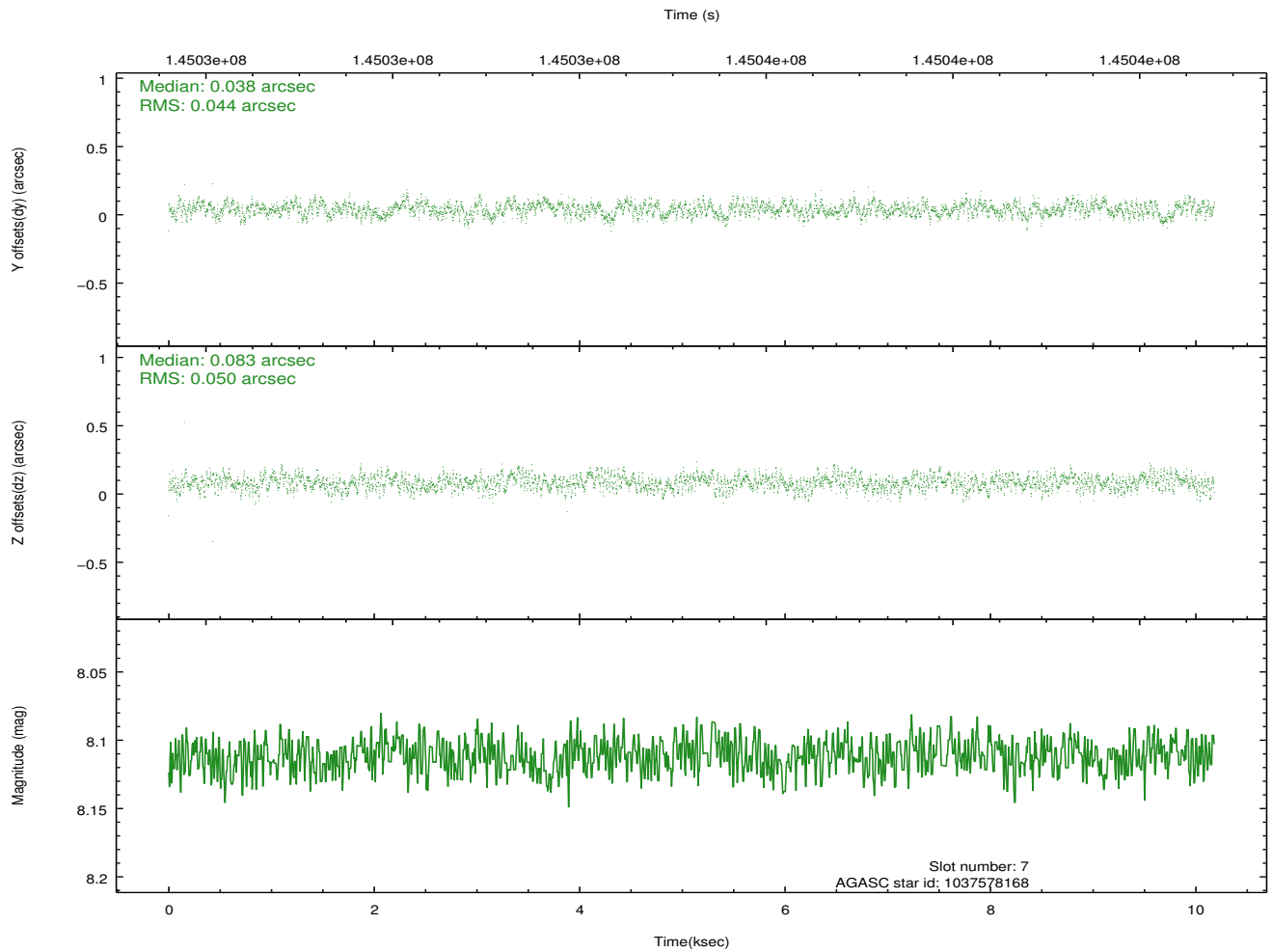
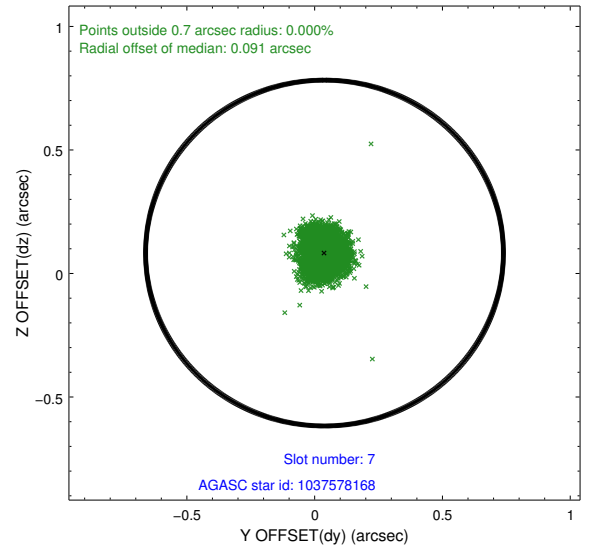
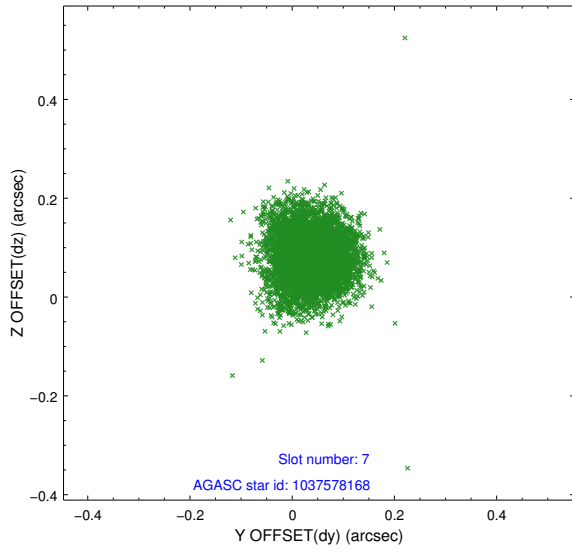
Time (s)



2.4.5 Slot 6

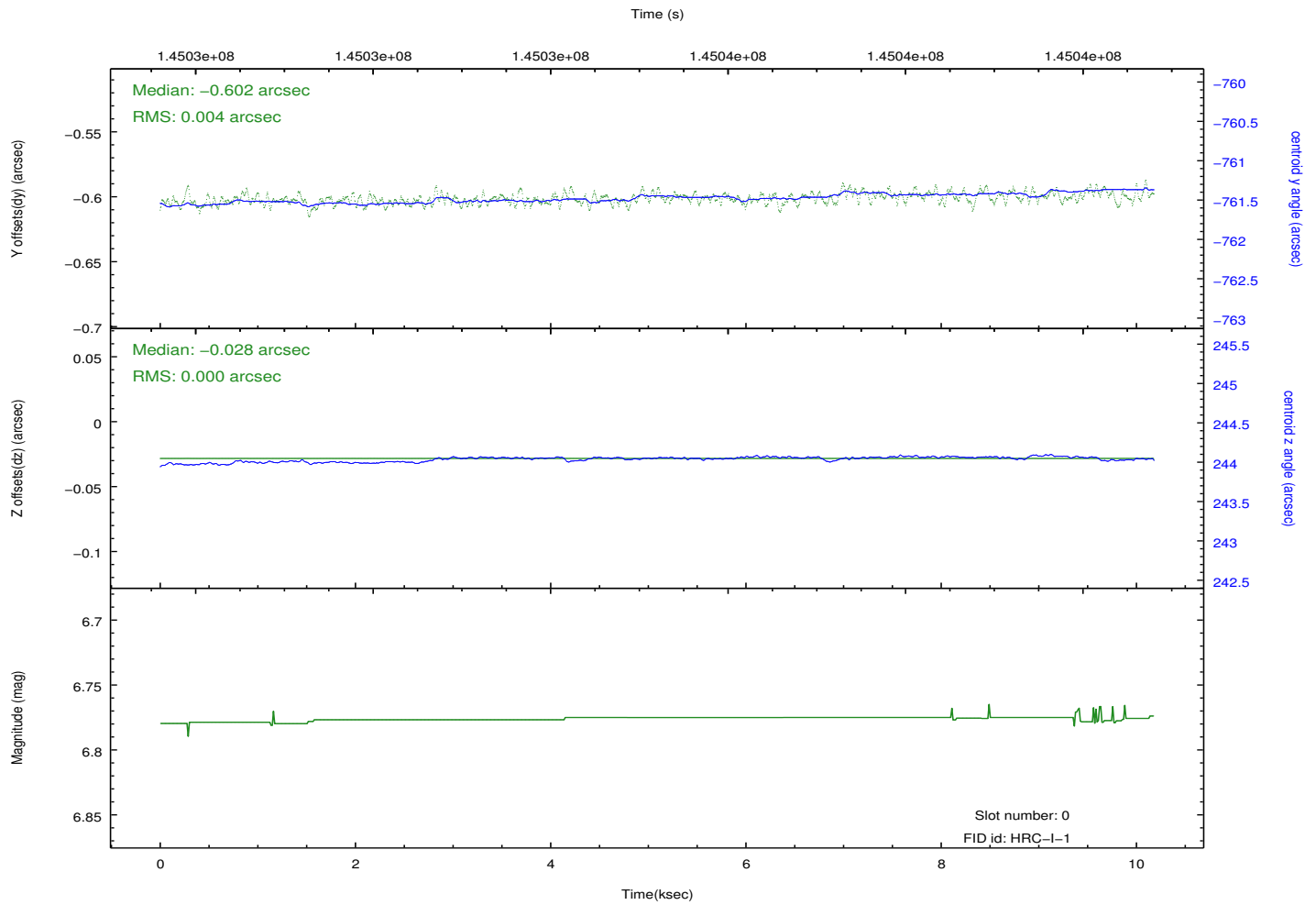
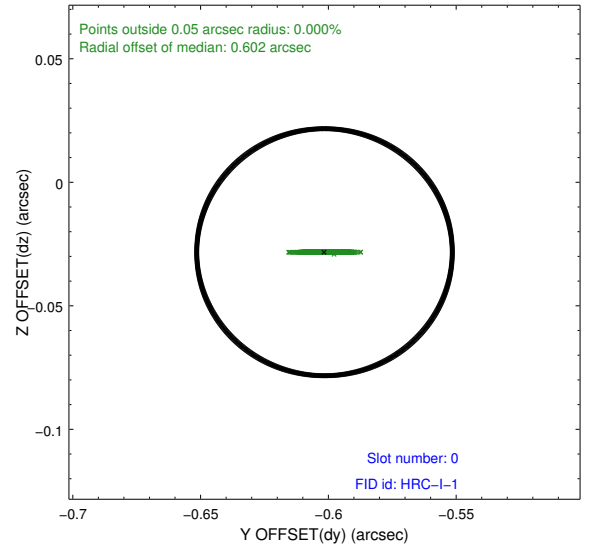
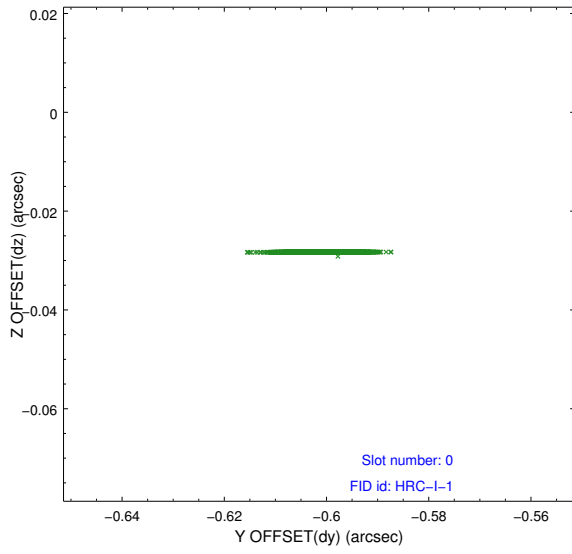


2.4.6 Slot 7

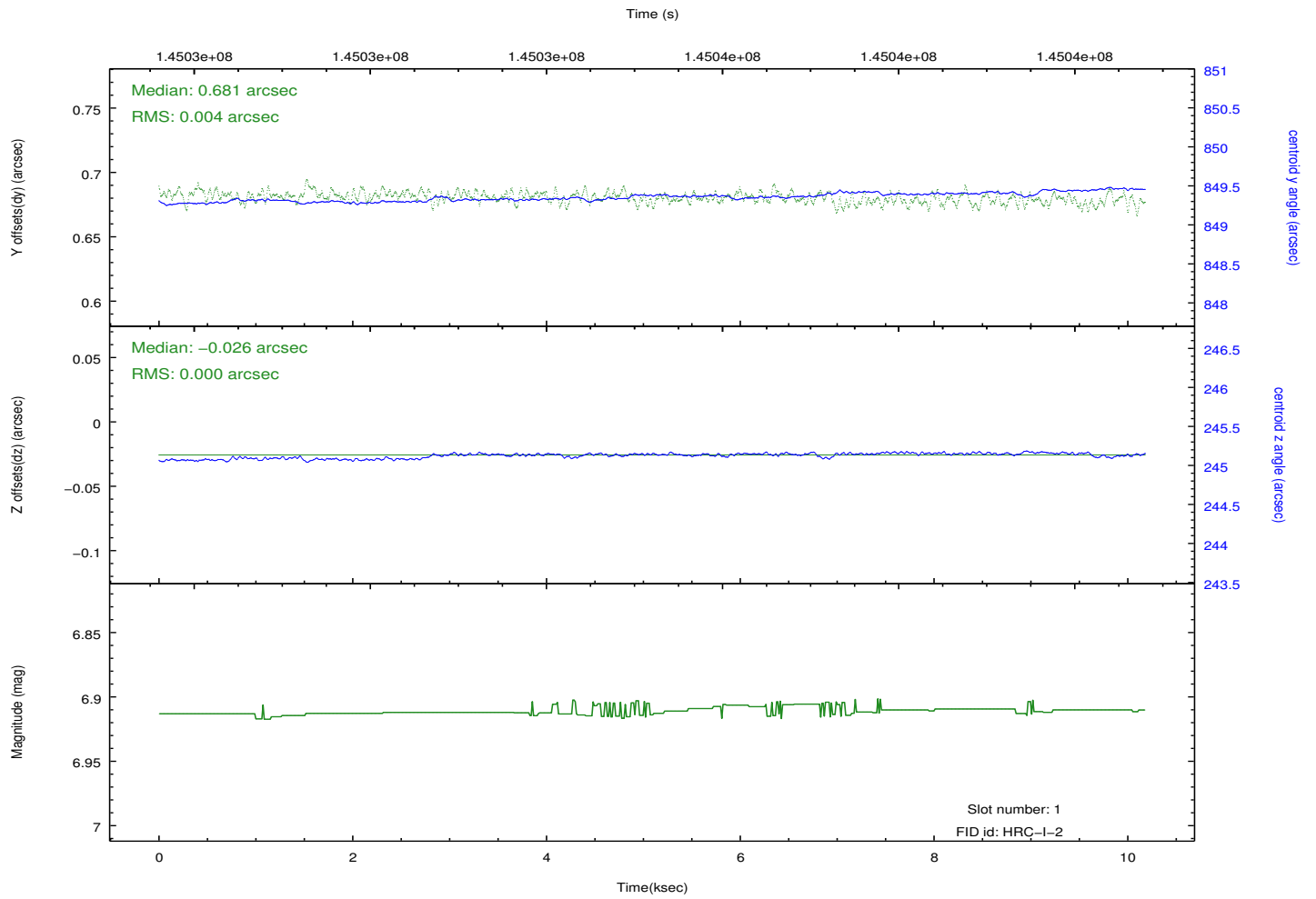
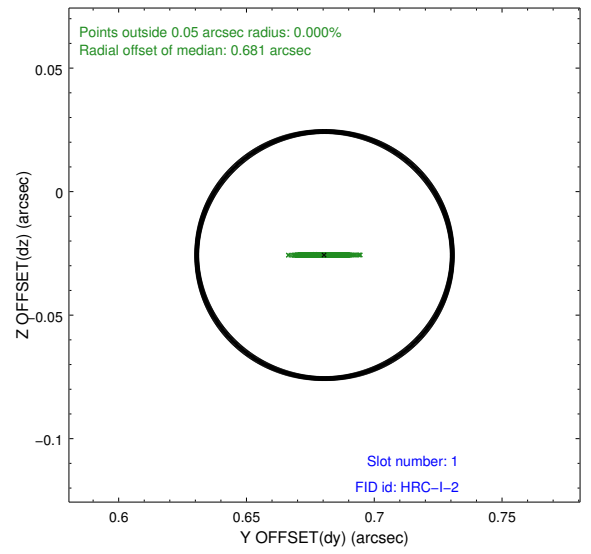
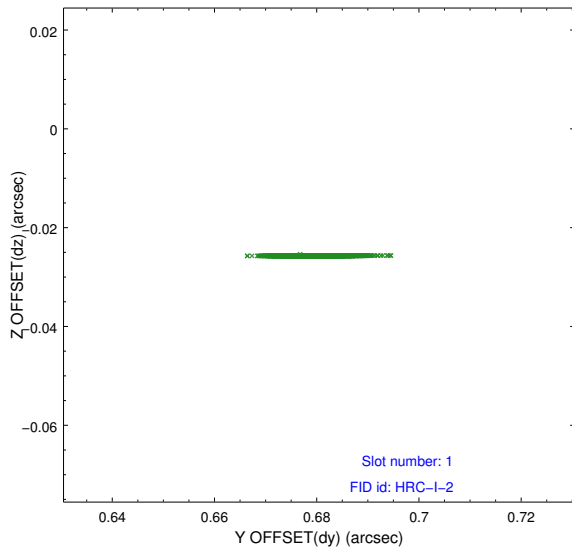


2.5 FID Slots

2.5.1 Slot 0



2.5.2 Slot 1



A Summary

A.1 Status

V&V Scientist	Jen Lauer
V&V Date (YYYY-MM-DD)	2012.10.25
V&V Edition	1
V&V Disposition and Status	OK
V&V Charge Time	9.856

A.2 Comments

Only 2 fid lights are used for this observation. The radial offsets of the fid lights are greater than 0.4 arcsec due to the large off-axis position of the source. Fid in slot 0 radial offset > 0.400000 arcsec
Fid in slot 1 radial offset > 0.400000 arcsec