

V&V Reference Report

L2 ASCDS Version : 8.4.5

Observation 4406 - L2 Version 3
Chandra X-Ray Center

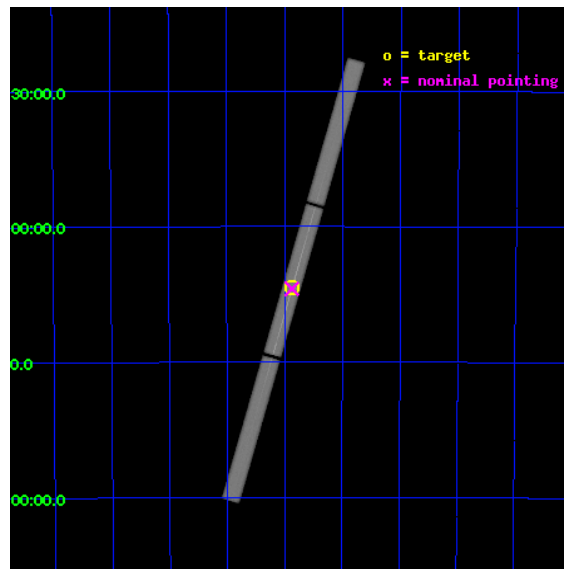
L2 Processing Date : Oct 18 2012

Contents

1	Front	2
2	OBI	3
2.1	OBI	3
2.1.1	Images	3
2.1.2	Parameters	4
2.1.3	Events	4
2.2	Compared Parameters	5
2.3	Aspect	6
2.4	Star Slots	9
2.4.1	Slot 3	9
2.4.2	Slot 4	10
2.4.3	Slot 5	11
2.4.4	Slot 6	12
2.4.5	Slot 7	13
2.5	FID Slots	14
2.5.1	Slot 0	14
2.5.2	Slot 1	15
2.5.3	Slot 2	16
3	Gratings	17
3.1	LETG Arm	17
A	Summary	19
A.1	Status	19
A.2	Comments	19

1 Front

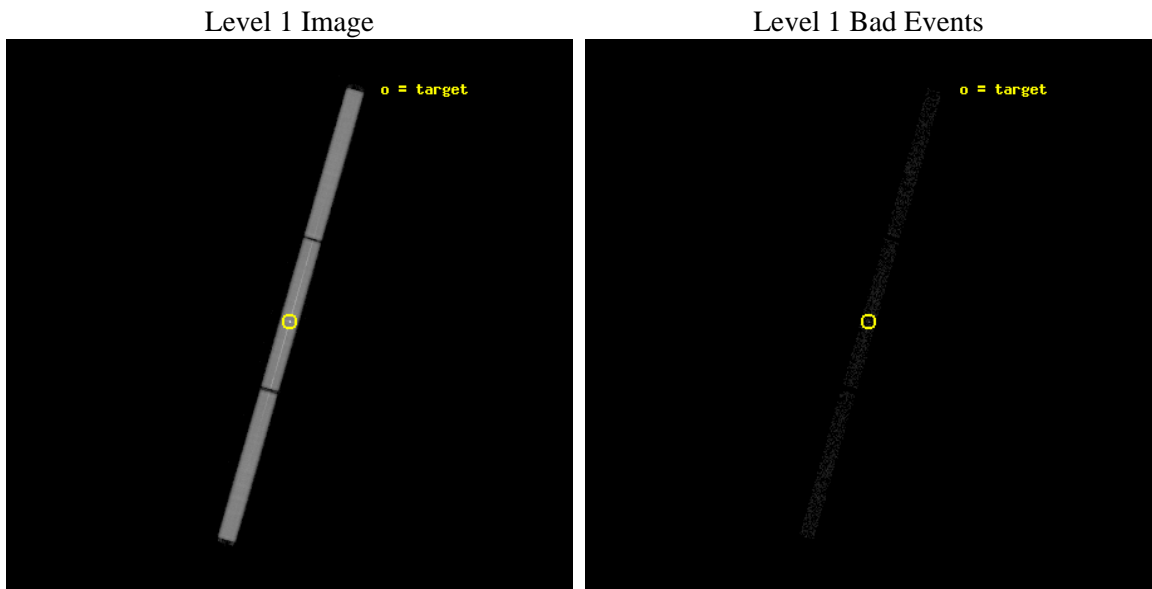
seq_num	790085	Sequence number
obs_id	4406	Observation id
title	AO4 CALIBRATION OBSERVATIONS OF PKS2155-304	Proposal title
observer	Dr. CXC Calibration	Principal investigator
object	PKS2155-304	Source name
ra_targ	329.716667	Observer's specified target RA [deg]
dec_targ	-30.225556	Observer's specified target Dec [deg]
ra_nom	329.71791560744	Nominal RA [deg]
dec_nom	-30.230101287598	Nominal Dec [deg]
roll_nom	286.09096748658	Nominal Roll [deg]
revision	3	Processing version of data
ontime	13853.900577575	[s]
livetime	13760.324048416	Ontime multiplied by DTCOR
l2events	785520	Number of level 2 events



2 OBI

2.1 OBI

2.1.1 Images



2.1.2 Parameters

obi_num	1	Obi number	sched_exp_time	14000.000000	[s] Scheduled observation exposure time
ascdsver	8.4.5	Processing system revision	ontime	13853.900577575	[s]
caldbver	4.5.2	 	l1events	1040940	Number of level 1 events
date	2012-10-18T09:08:04	Date and time of file creation			
revision	3	Processing version of data			

2.1.3 Events

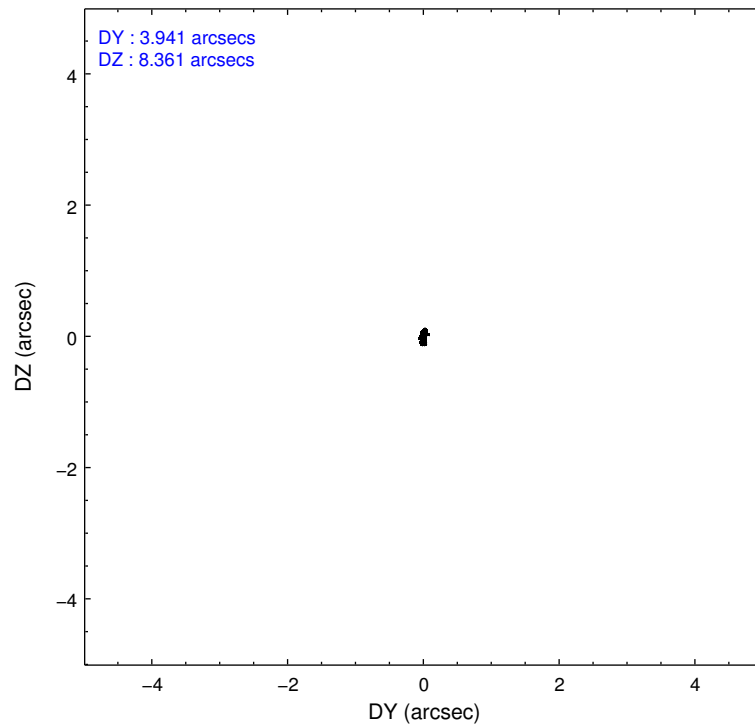
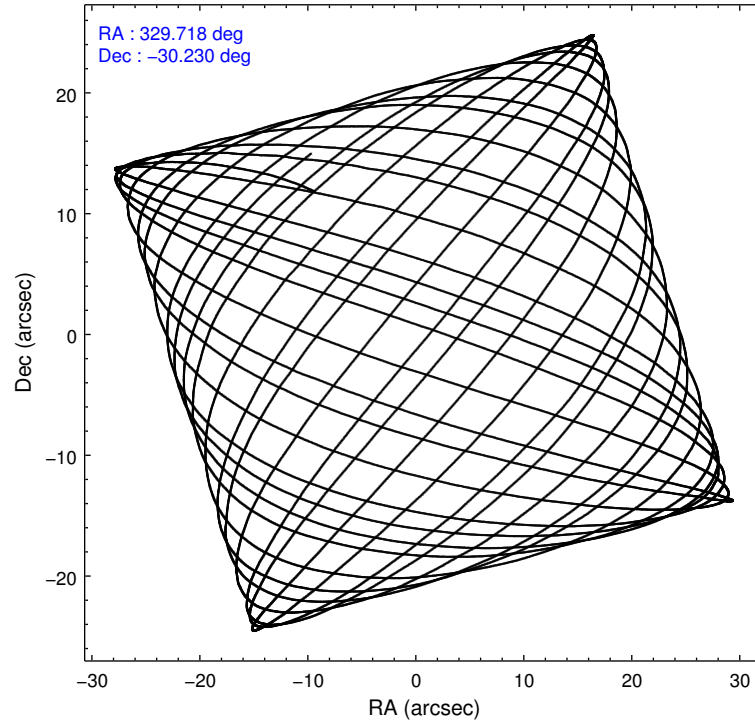
Level 1 Events

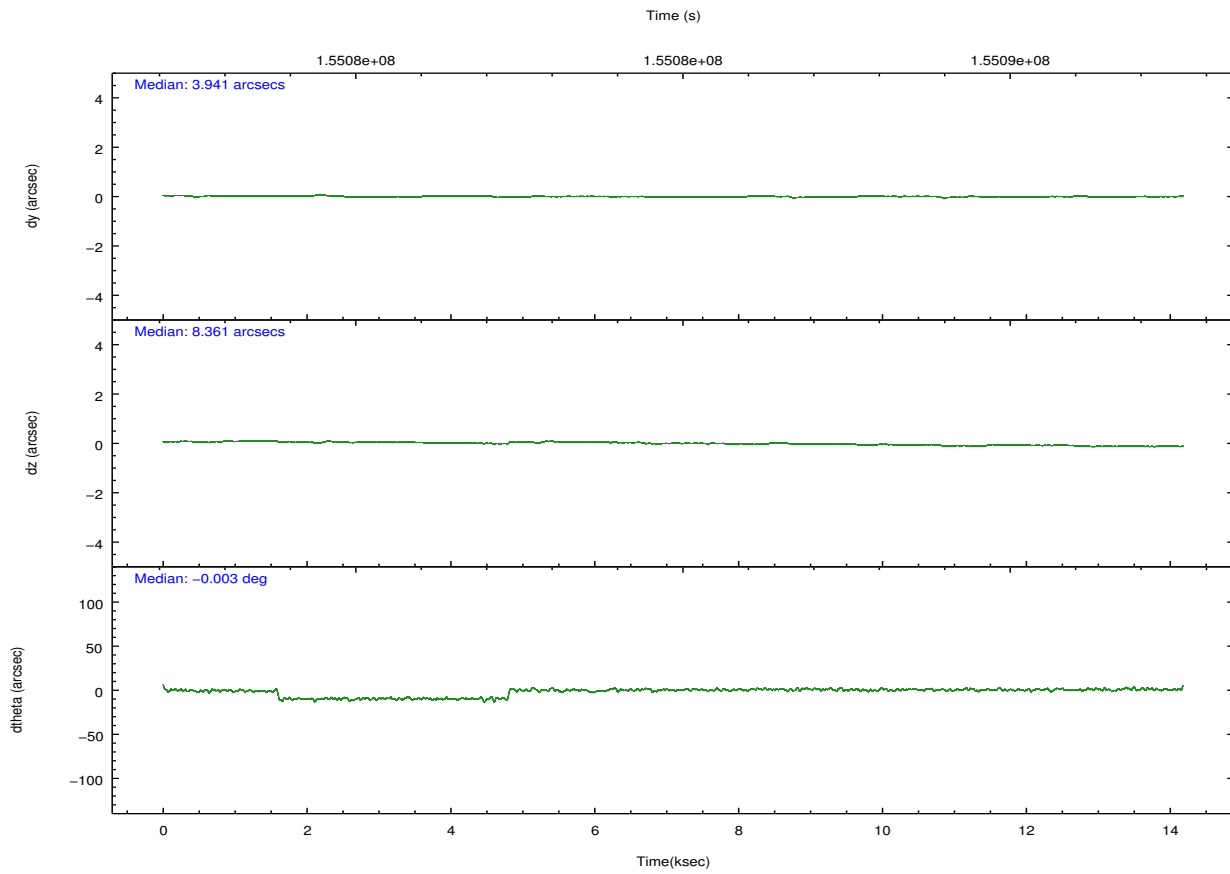
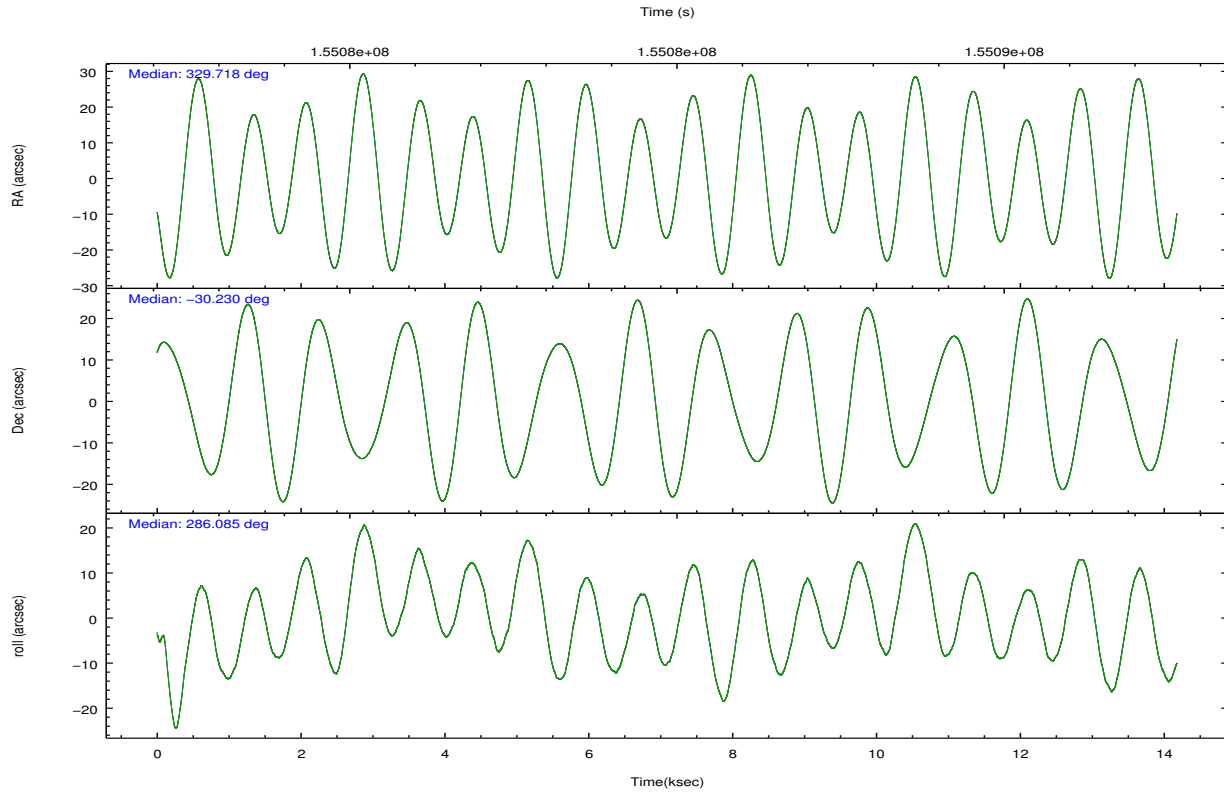
	segment 1	segment 2	segment 3
level 1 events	335123	376419	329398
rejected events	2270	4239	2323
rejected %	0%	1%	0%

2.2 Compared Parameters

Parameter	Planned	Actual	Parameter	Planned	Actual
Instrument	HRC	HRC	Obspar format version number	7	7
Detector	HRC-S	HRC-S	Obspar file type	PREDICTED	ACTUAL
Grating	LETG	LETG	Obspar update status	NONE	UPDATED
Data mode	OBSERVING	OBSERVING			
Observation mode	POINTING	POINTING			
[deg] Pointing RA	329.693066	329.7179156074362			
[deg] Pointing Dec	-30.211299	-30.23010128759777			
[deg] Pointing Roll	286.011126	286.0909674865847			
[mm] SIM focus pos	-1.429586	-1.428180813131781			
[mm] SIM defocus	0.1037507710433287	0.1051558262725154			
[mm] SIM translation stage pos	250.455976	250.466033080201			
[mm] SIM translation stage offset	0	-0.01005468664627074			
[s] Observation start time (MET)	155077936.184000	155077565.19255			
Observation start date	2002-11-30T21:11:12	2002-11-30T21:06:05			
[s] Observation end time (MET)	155091936.184000	155092765.94319			
Observation end date	2002-12-01T01:04:32	2002-12-01T01:19:25			

2.3 Aspect



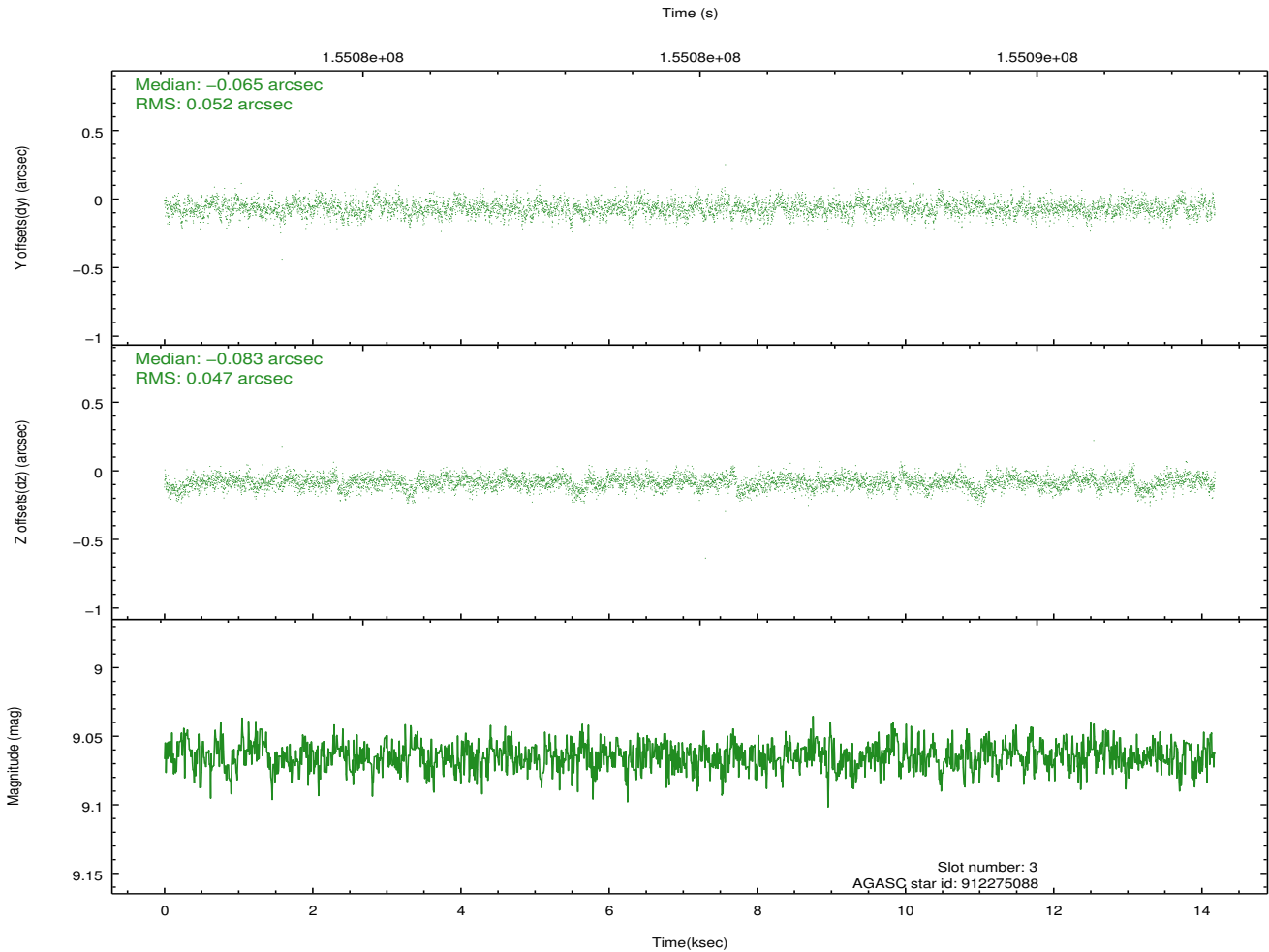
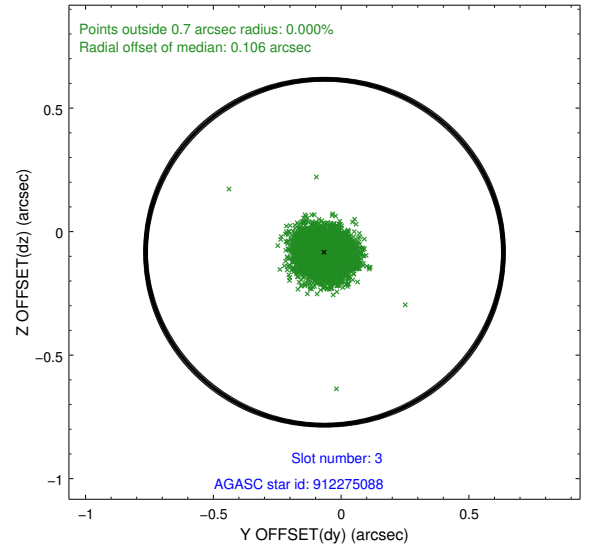
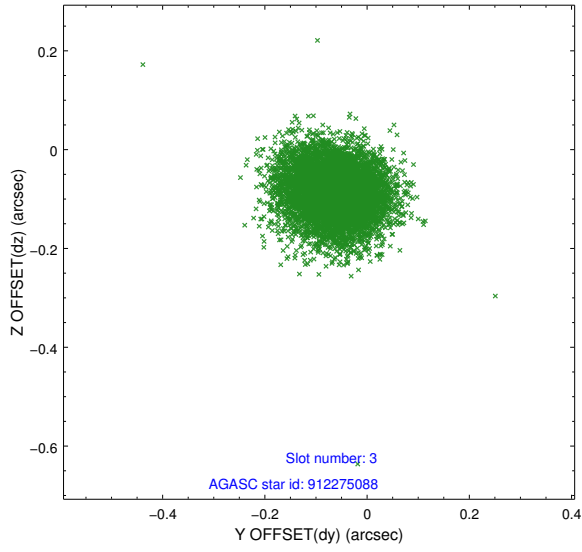


Slot Statistics

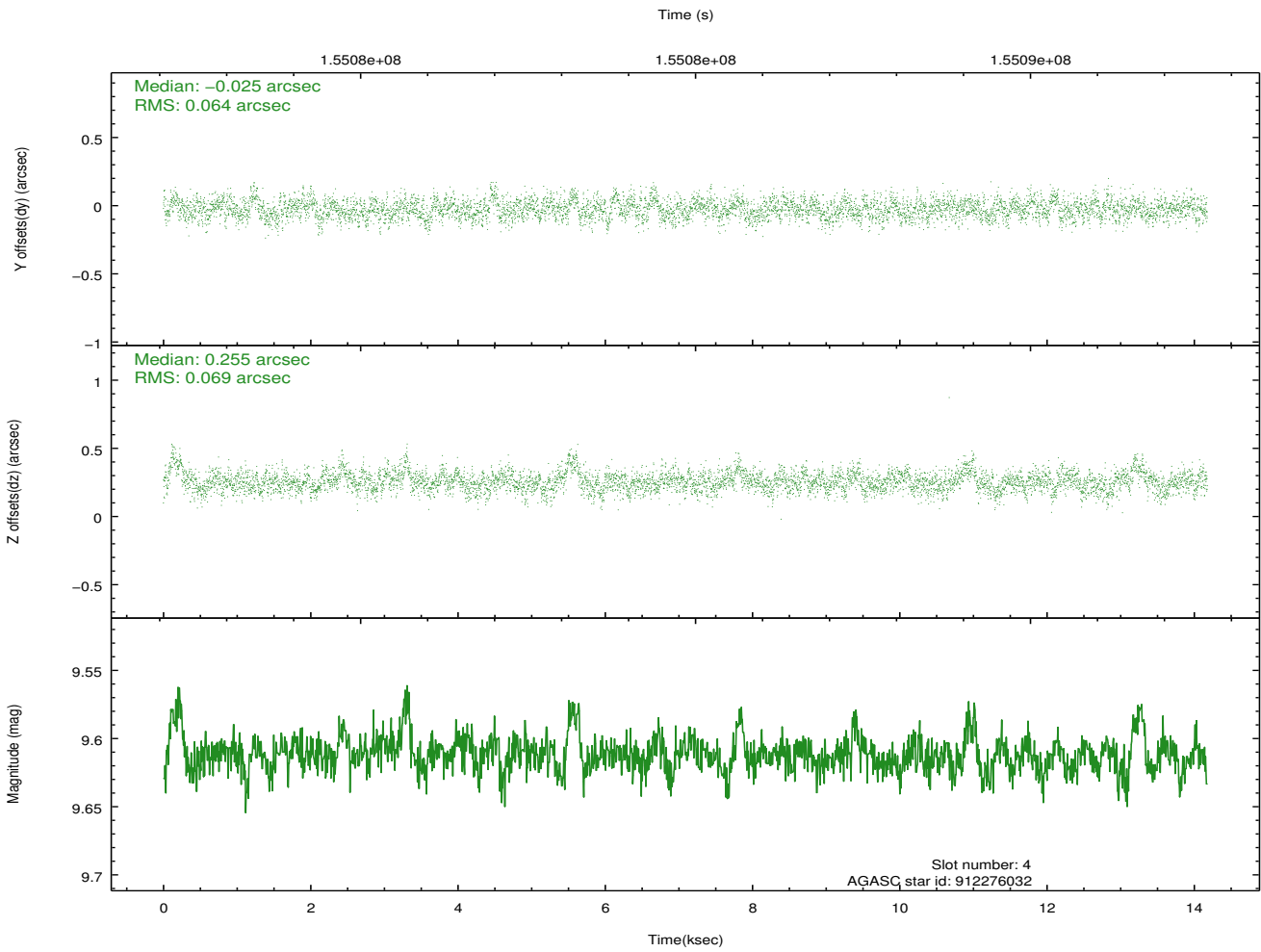
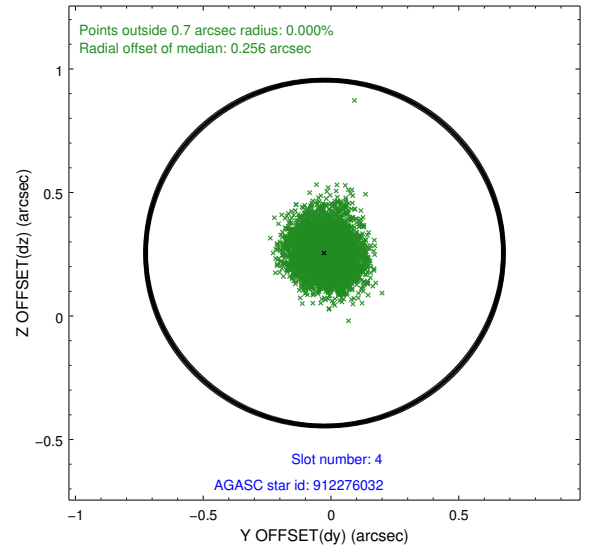
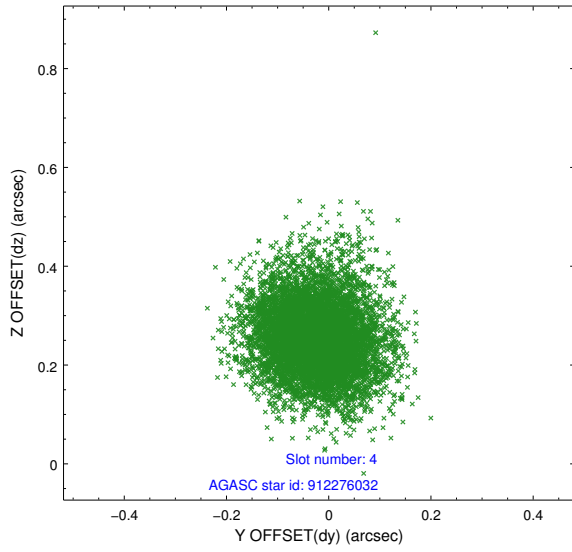
slot	status	id	mag	n_pts	med_dy	med_dz	dr1	dr2	ra	dec	mean_y	mean_z
0	FID	HRC-S-1	7.02	3457	0.130	-0.123	0.011	0.021	0.000000	0.000000	-1158.01	-456.95
1	FID	HRC-S-3	7.04	3457	0.122	-0.074	0.012	0.034	0.000000	0.000000	-1161.07	572.50
2	FID	HRC-S-4	7.00	3457	0.135	-0.100	0.007	0.018	0.000000	0.000000	1239.92	575.34
3	GUIDE	912275088	9.06	6913	-0.065	-0.083	0.074	0.121	329.619228	-29.738698	-1697.93	248.17
4	GUIDE	912276032	9.61	6902	-0.025	0.255	0.099	0.164	329.395967	-29.803466	-1665.20	-486.35
5	GUIDE	981468016	9.01	6906	-0.010	-0.140	0.122	0.186	328.842457	-30.034984	-1330.75	-2375.14
6	GUIDE	981468128	9.37	6911	0.015	-0.010	0.088	0.145	329.756350	-30.158334	-127.92	242.63
7	GUIDE	981469488	9.61	6914	0.084	-0.014	0.096	0.156	329.261199	-30.045155	-942.40	-1128.39

2.4 Star Slots

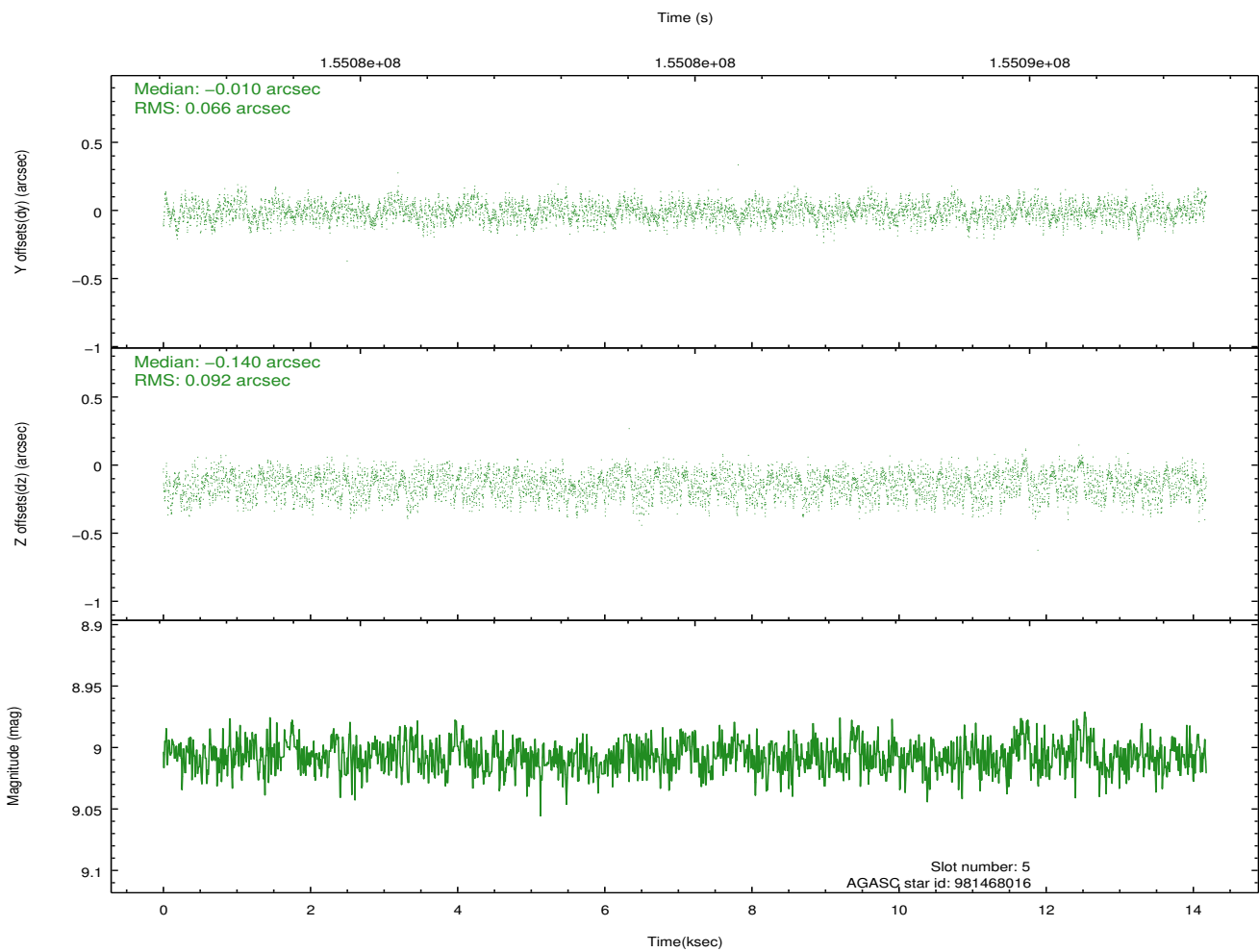
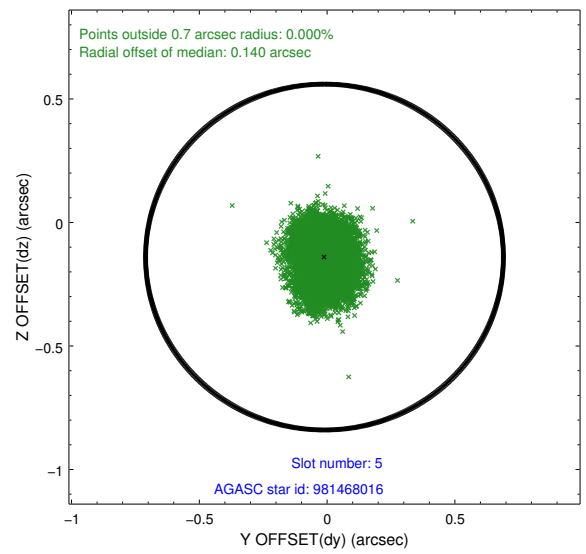
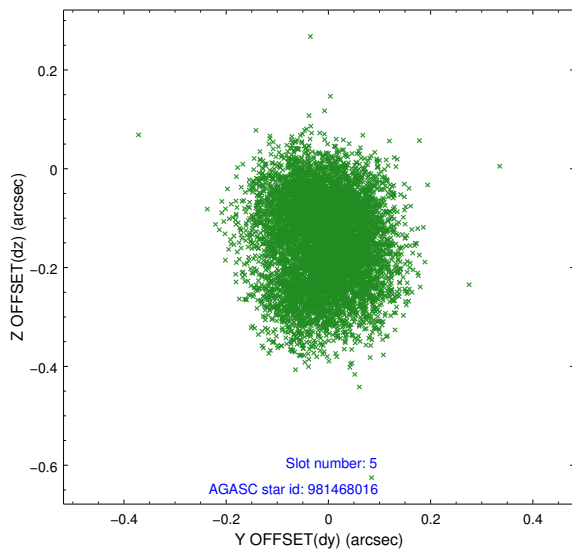
2.4.1 Slot 3



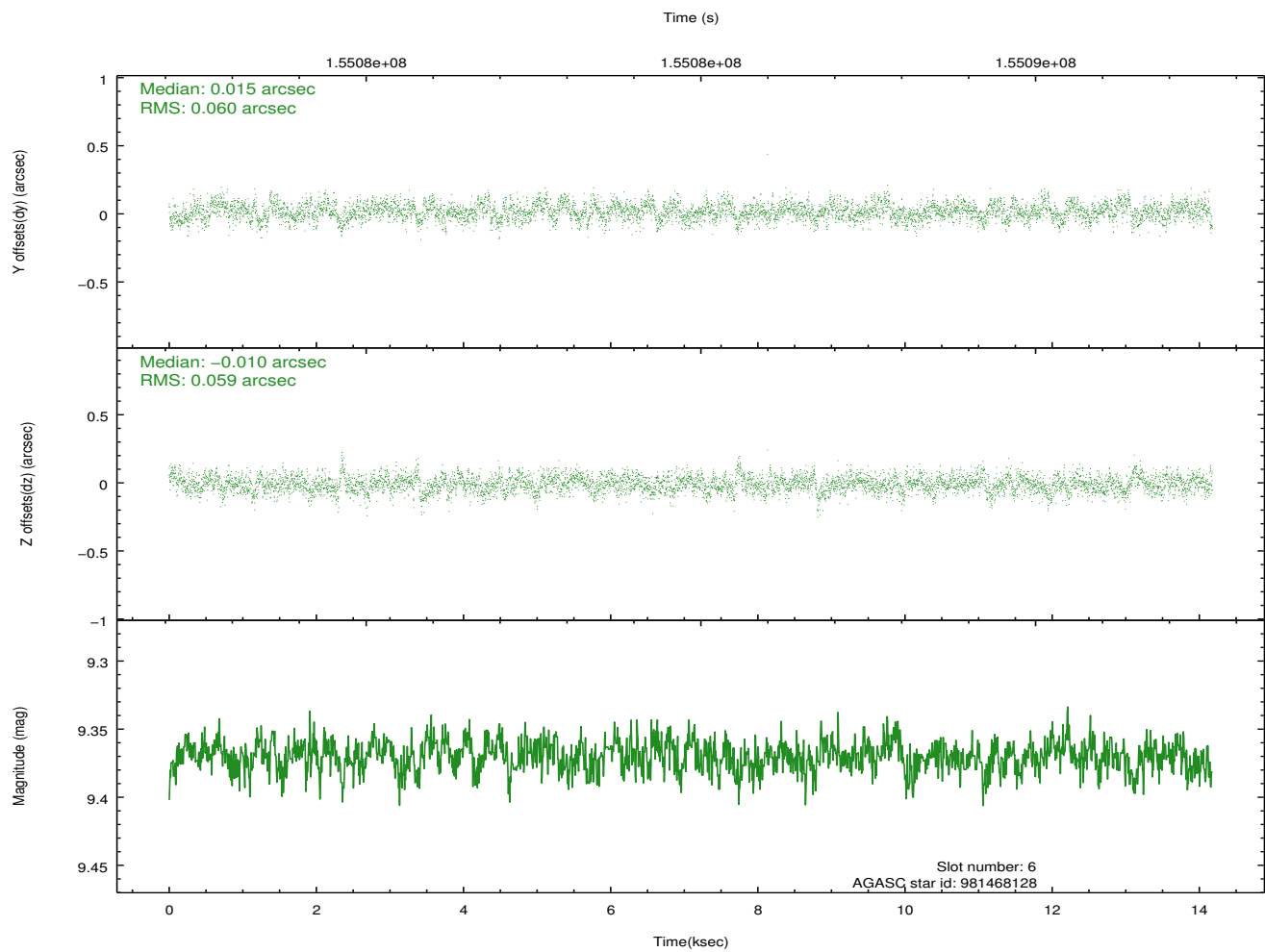
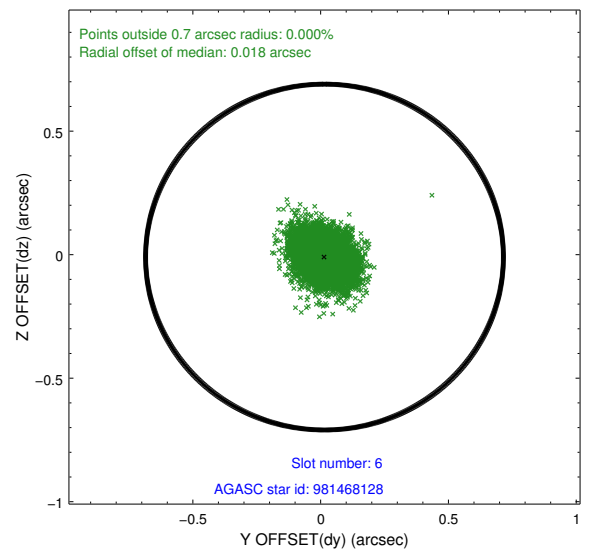
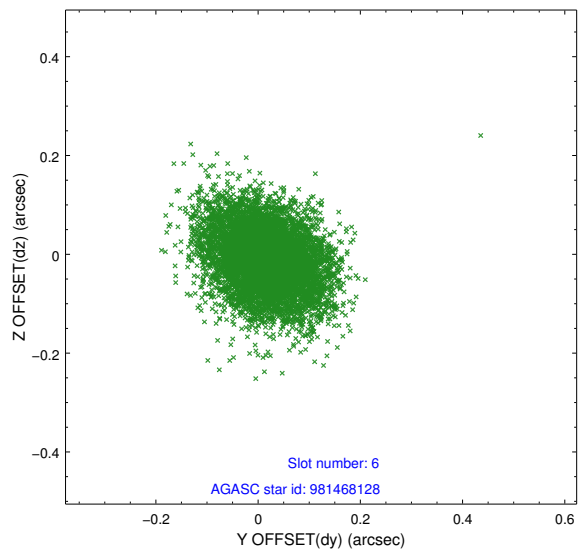
2.4.2 Slot 4



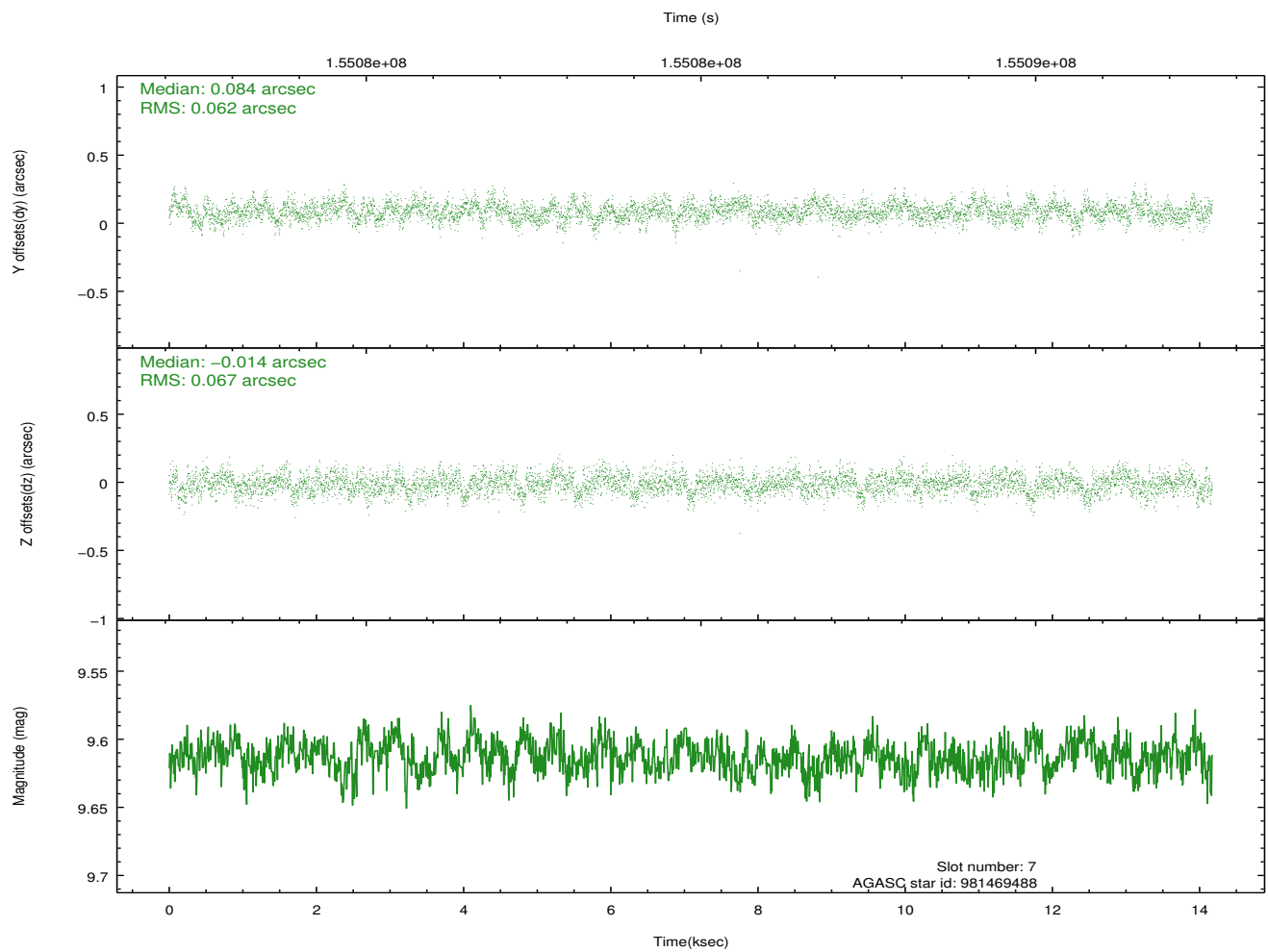
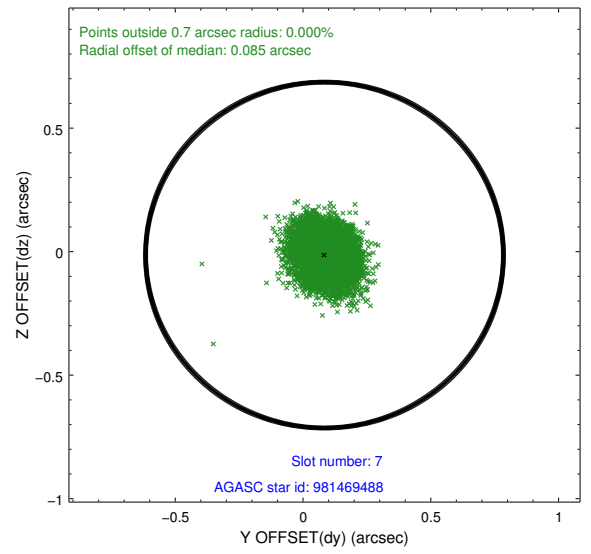
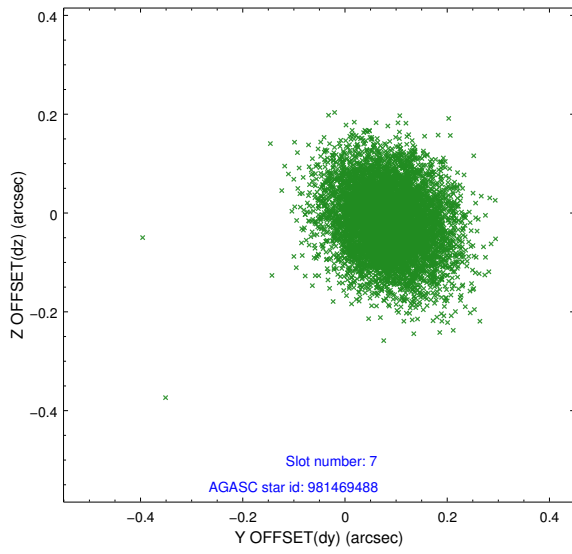
2.4.3 Slot 5



2.4.4 Slot 6

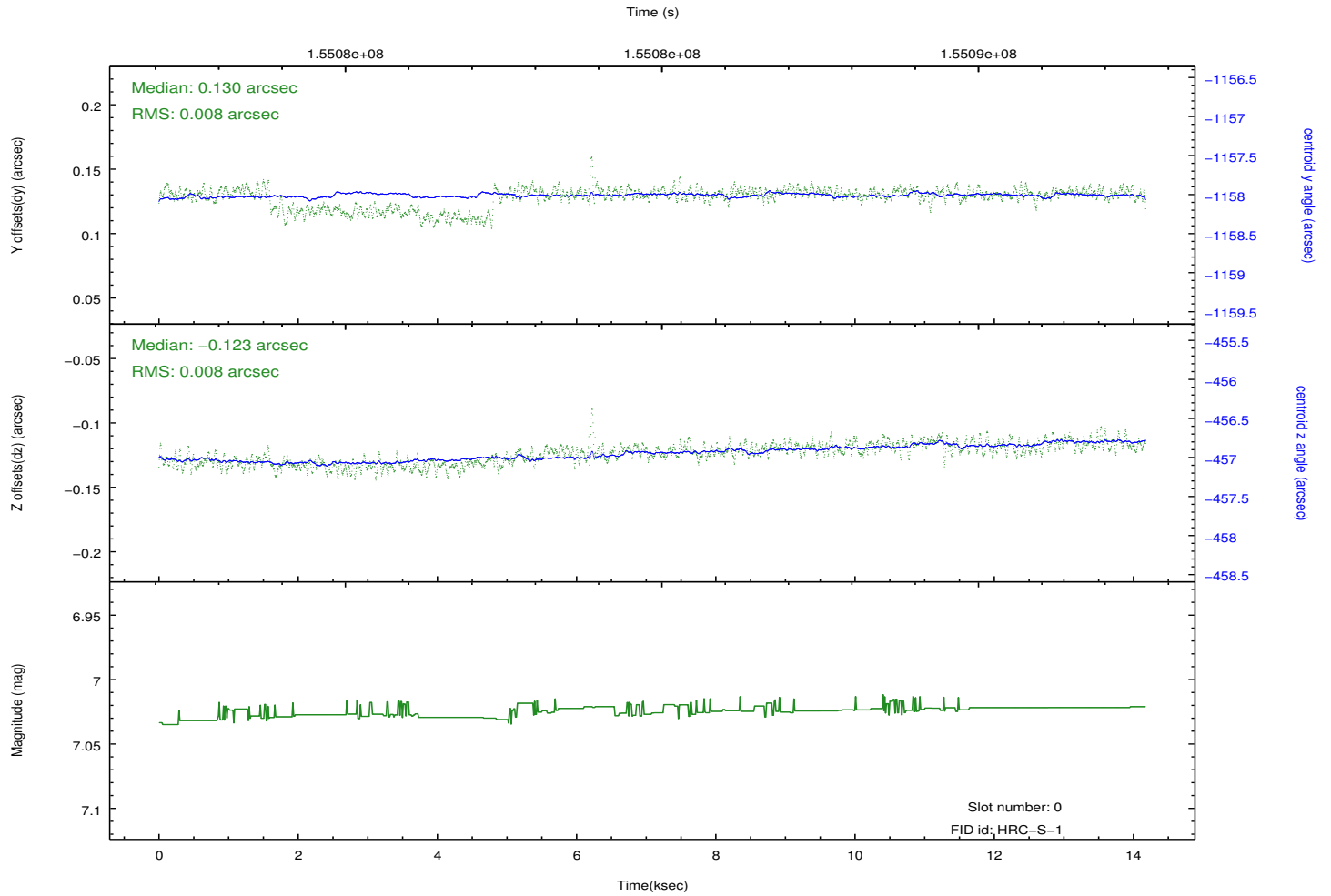
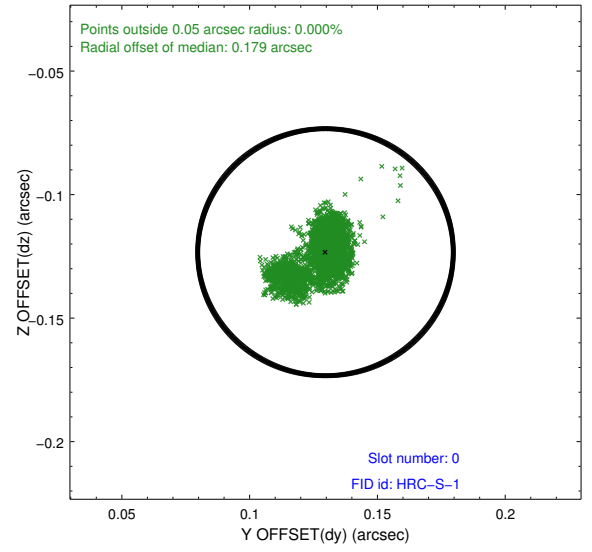
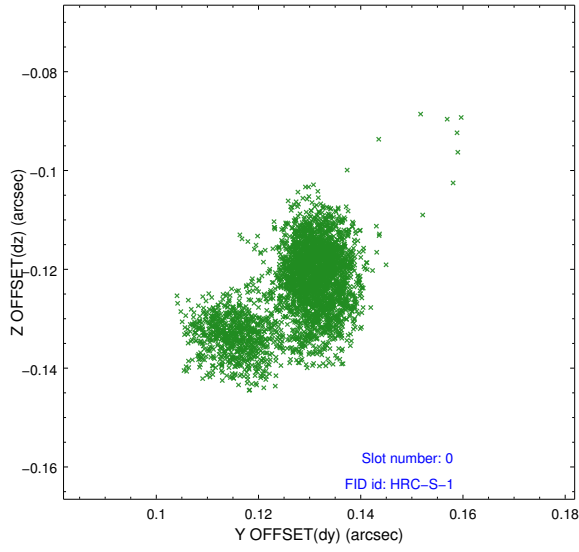


2.4.5 Slot 7

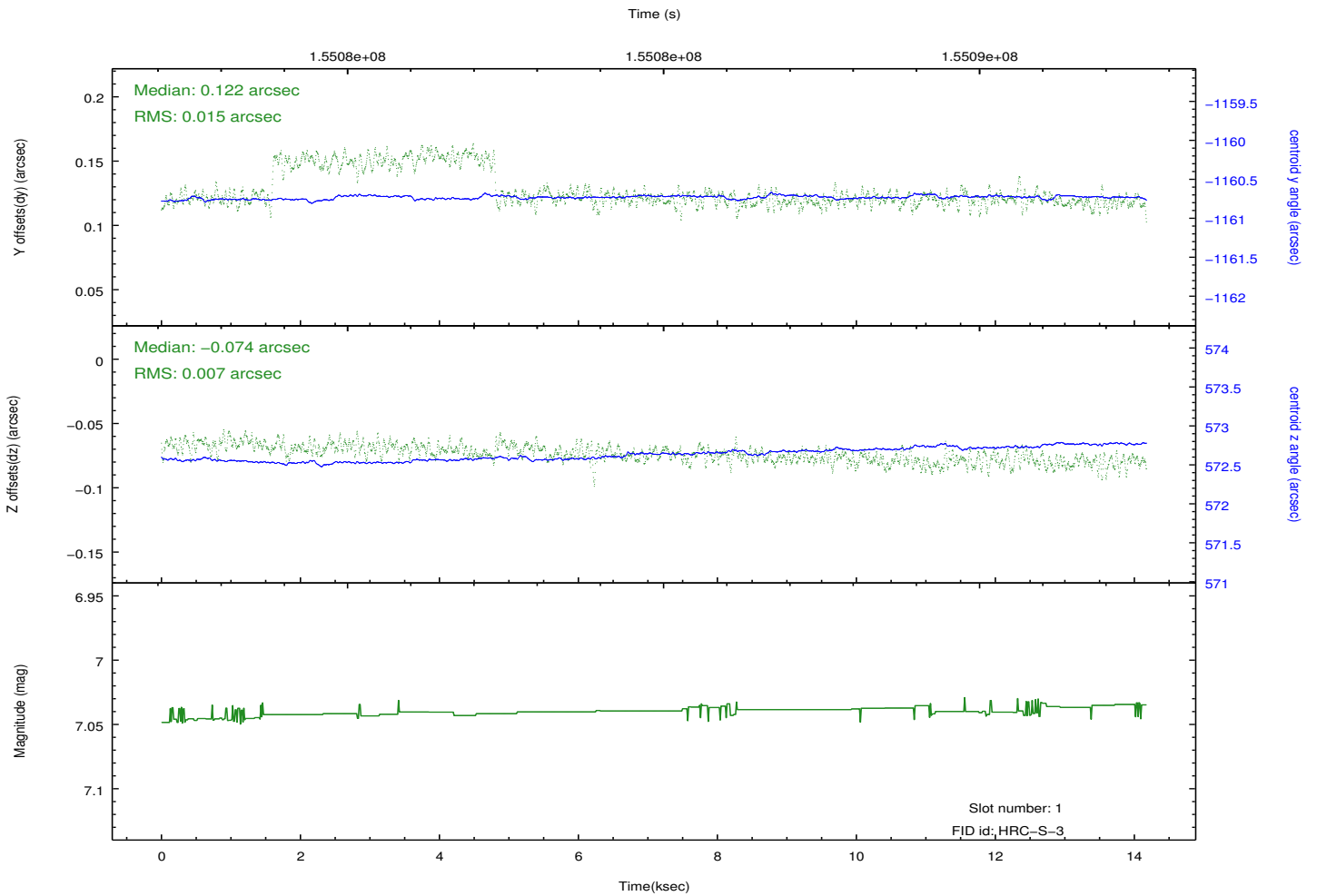
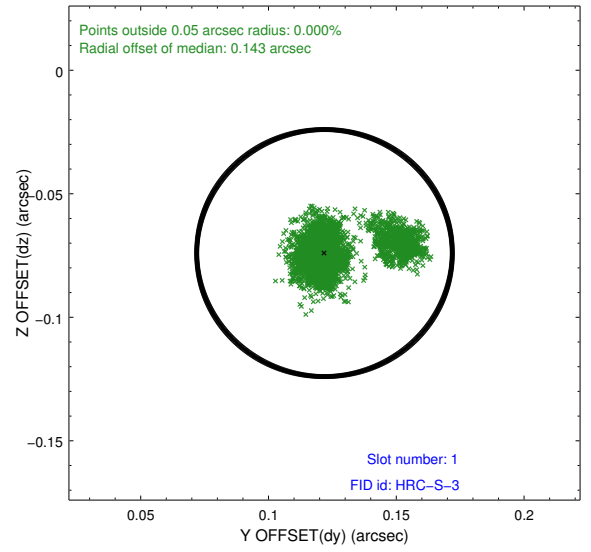
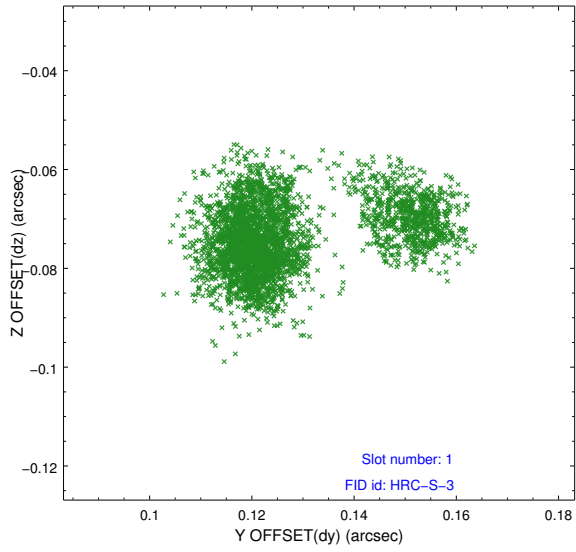


2.5 FID Slots

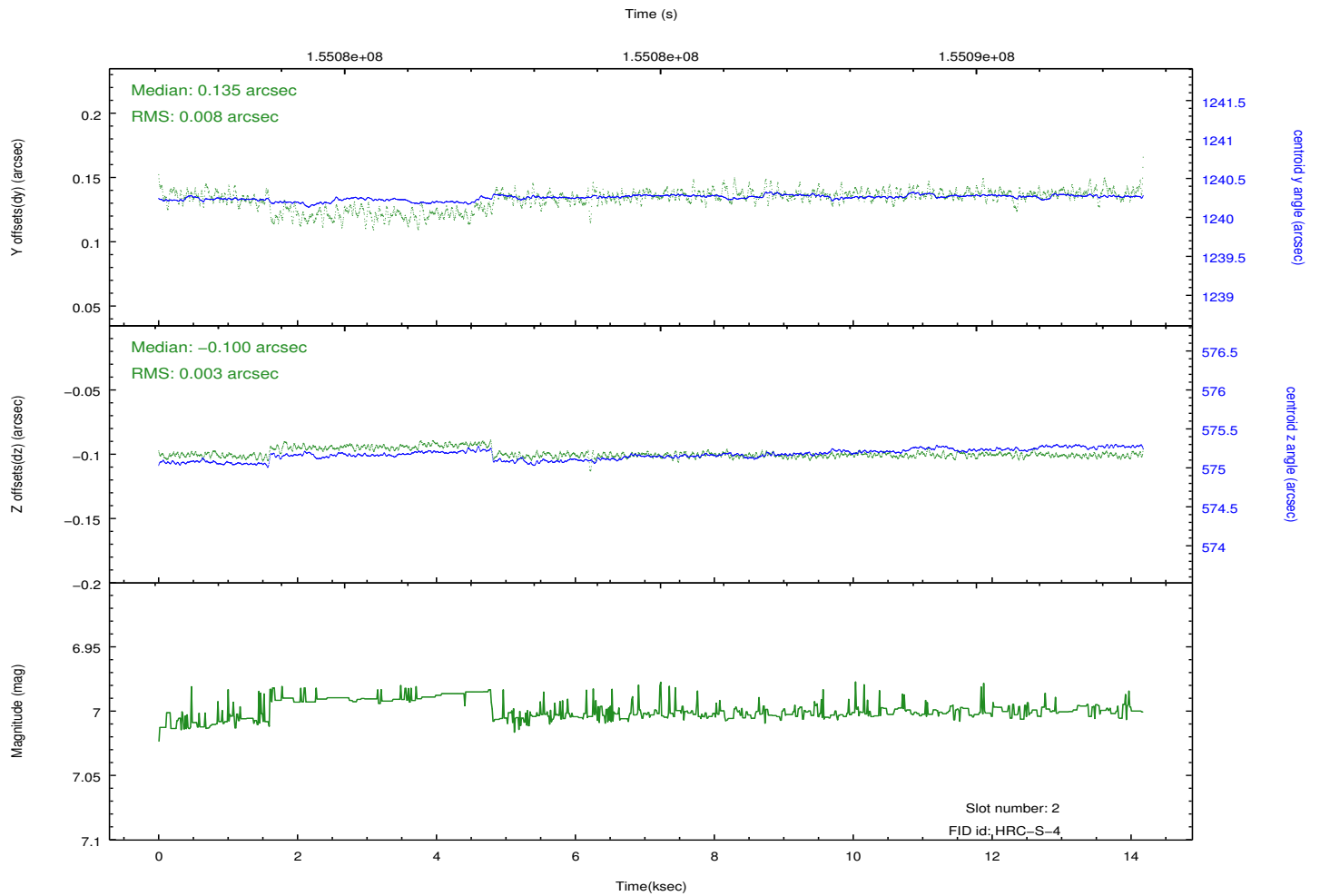
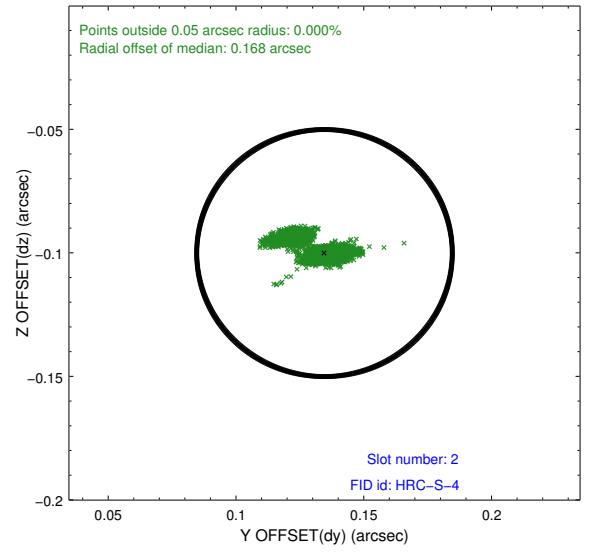
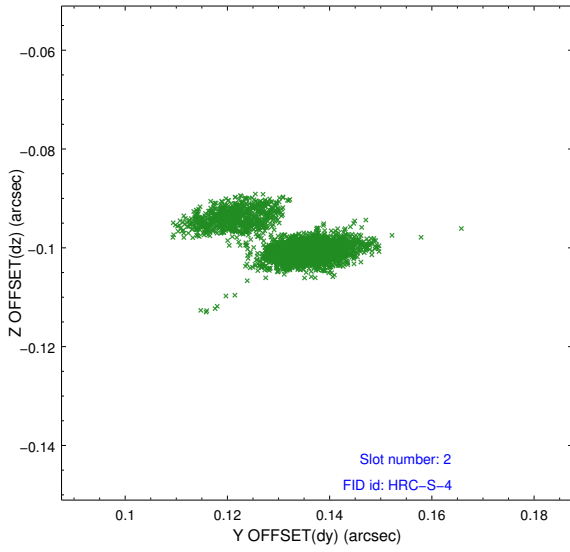
2.5.1 Slot 0



2.5.2 Slot 1

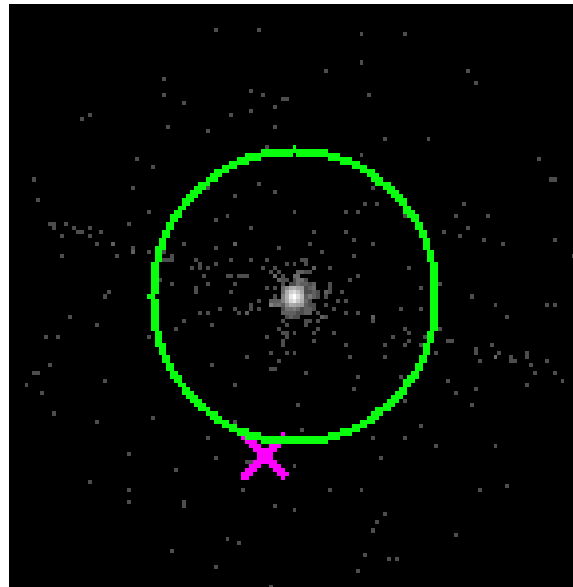


2.5.3 Slot 2

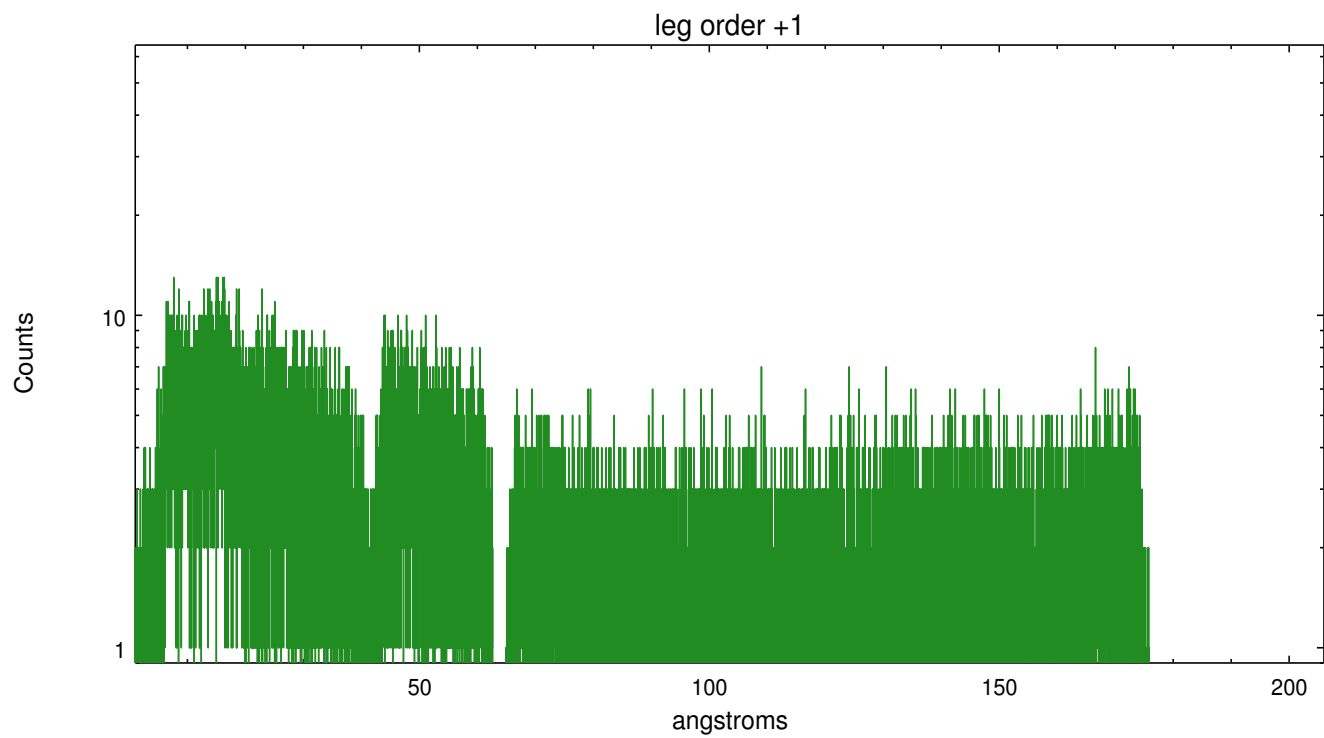
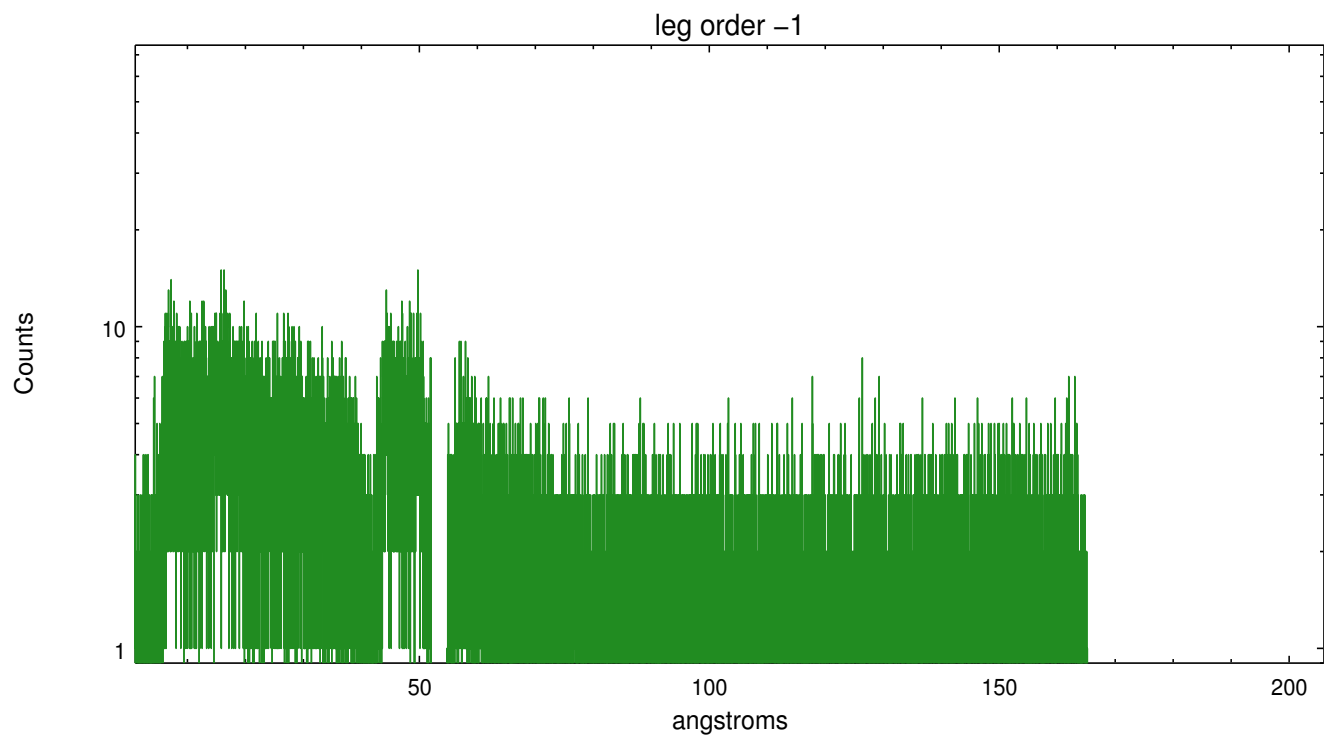


3 Gratings

3.1 LETG Arm



LETG Zero Order



A Summary

A.1 Status

V&V Scientist	Joy Nichols
V&V Date (YYYY-MM-DD)	2012.10.26
V&V Edition	1
V&V Disposition and Status	OK
V&V Charge Time	13.854

A.2 Comments