

V&V Reference Report

L2 ASCDS Version : 8.4.5

Observation 4436 - L2 Version 3
Chandra X-Ray Center

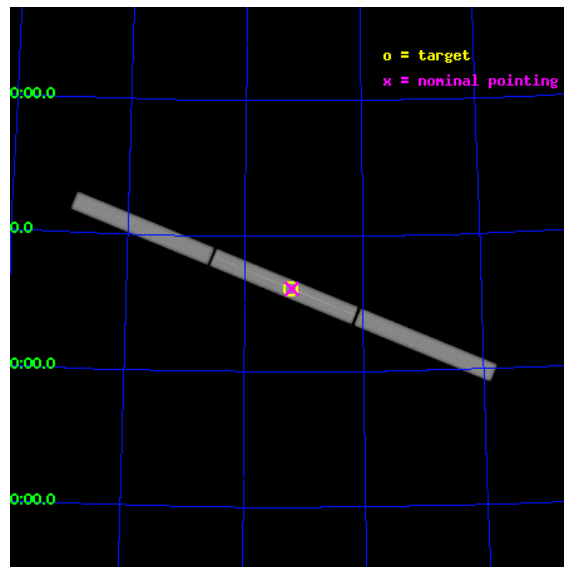
L2 Processing Date : Oct 28 2012

Contents

1	Front	2
2	OBI	3
2.1	OBI	3
2.1.1	Images	3
2.1.2	Parameters	4
2.1.3	Events	4
2.2	Compared Parameters	5
2.3	Aspect	6
2.4	Star Slots	9
2.4.1	Slot 3	9
2.4.2	Slot 4	10
2.4.3	Slot 5	11
2.4.4	Slot 6	12
2.4.5	Slot 7	13
2.5	FID Slots	14
2.5.1	Slot 0	14
2.5.2	Slot 1	15
2.5.3	Slot 2	16
3	Gratings	17
3.1	LETG Arm	17
A	Summary	19
A.1	Status	19
A.2	Comments	19

1 Front

seq_num	700706	Sequence number
obs_id	4436	Observation id
title	CONNECTING THE X-RAY AND UV IONIZED ABSORBERS IN MRK 279	Proposal
observer	Dr Jelle Kaastra	Principal investigator
object	MRK 279	Source name
ra_targ	208.264583	Observer's specified target RA [deg]
dec_targ	69.308111	Observer's specified target Dec [deg]
ra_nom	208.25218636872	Nominal RA [deg]
dec_nom	69.306502576439	Nominal Dec [deg]
roll_nom	202.07891426852	Nominal Roll [deg]
revision	3	Processing version of data
ontime	29182.00748679	[s]
livetime	29011.439341579	Ontime multiplied by DTCOR
l2events	1364075	Number of level 2 events

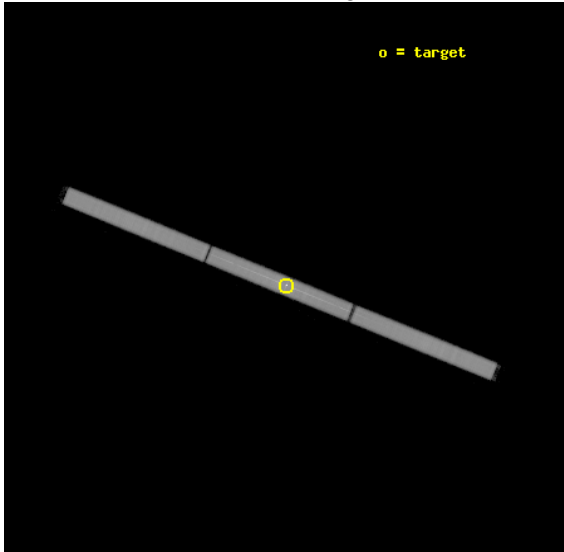


2 OBI

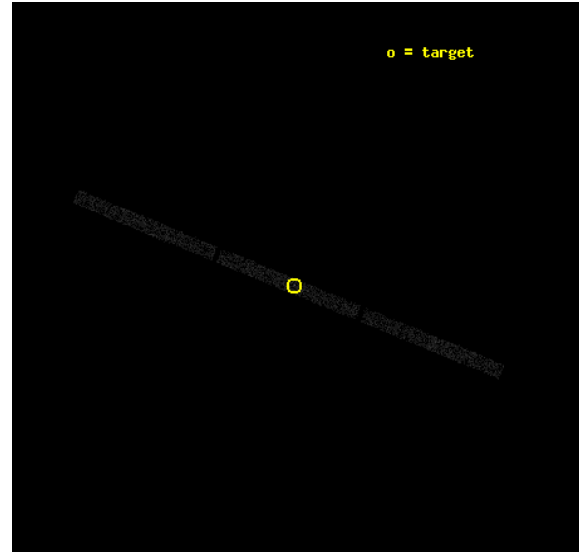
2.1 OBI

2.1.1 Images

Level 1 Image



Level 1 Bad Events



2.1.2 Parameters

obi_num	0	Obi number	sched_exp_time	29355.000000	[s] Scheduled observation exposure time
ascdsver	8.4.5	Processing system revision	ontime	29182.00748679	[s]
caldbver	4.5.2	 	l1events	1893950	Number of level 1 events
date	2012-10-28T13:32:32	Date and time of file creation			
revision	3	Processing version of data			

2.1.3 Events

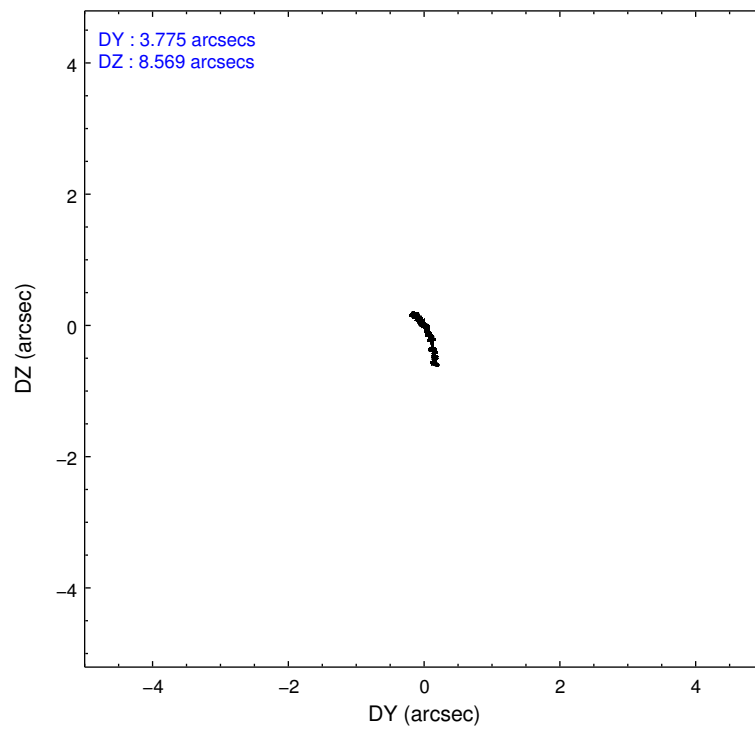
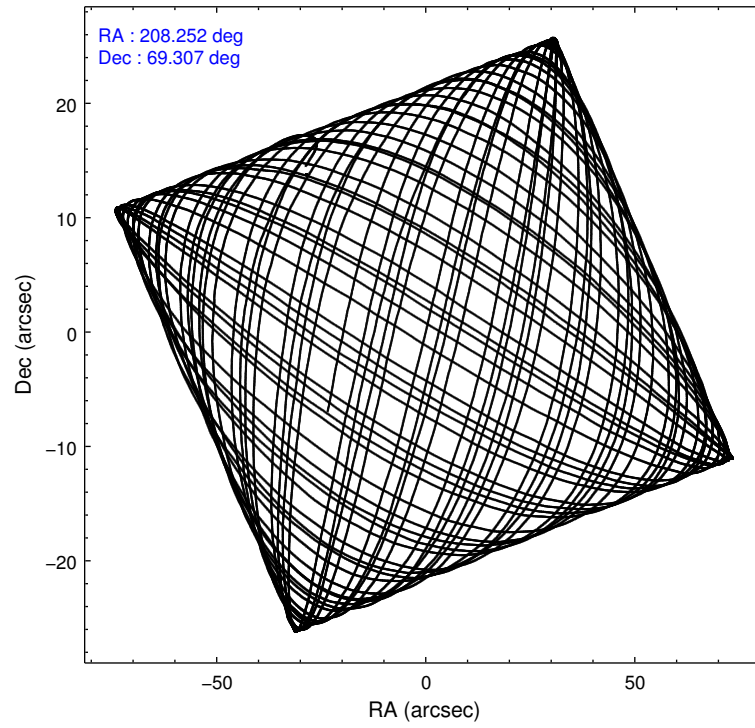
Level 1 Events

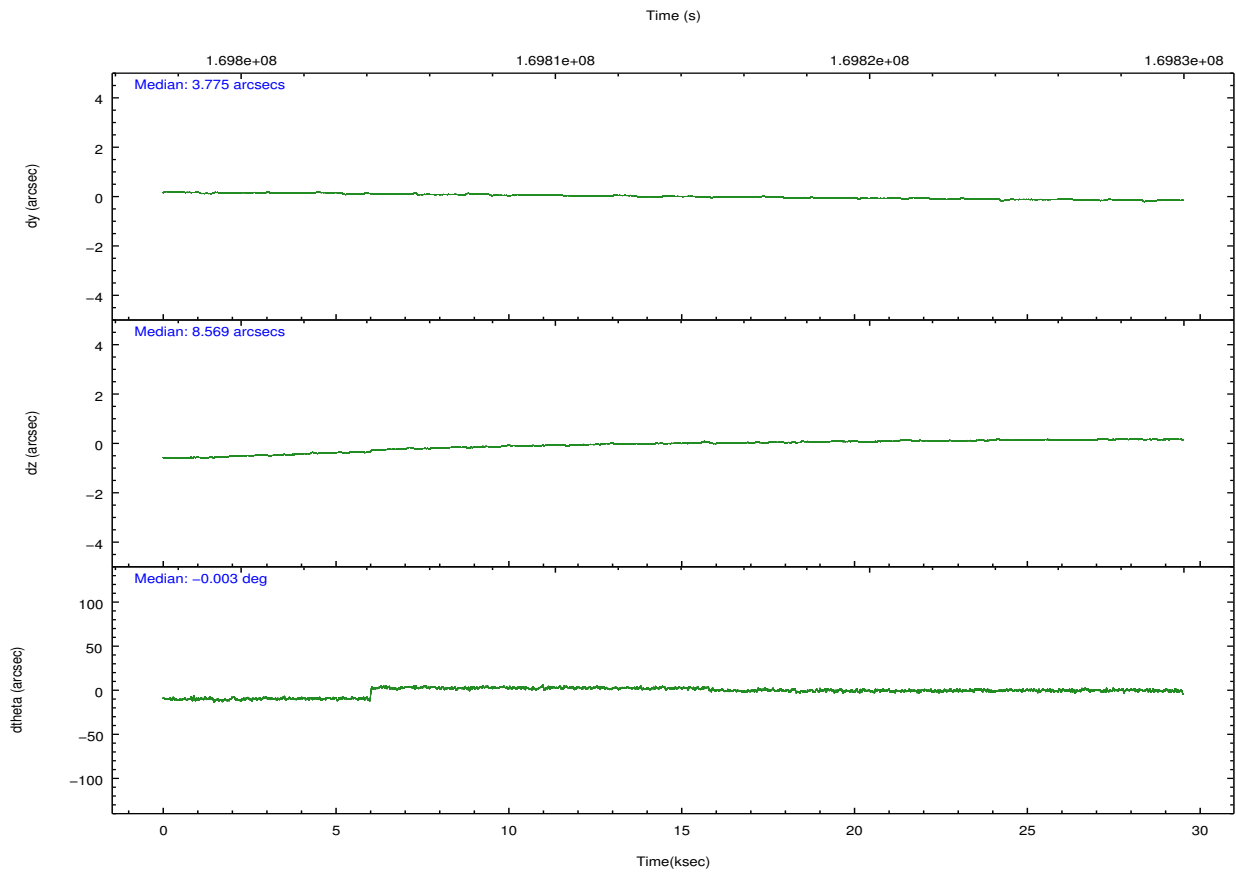
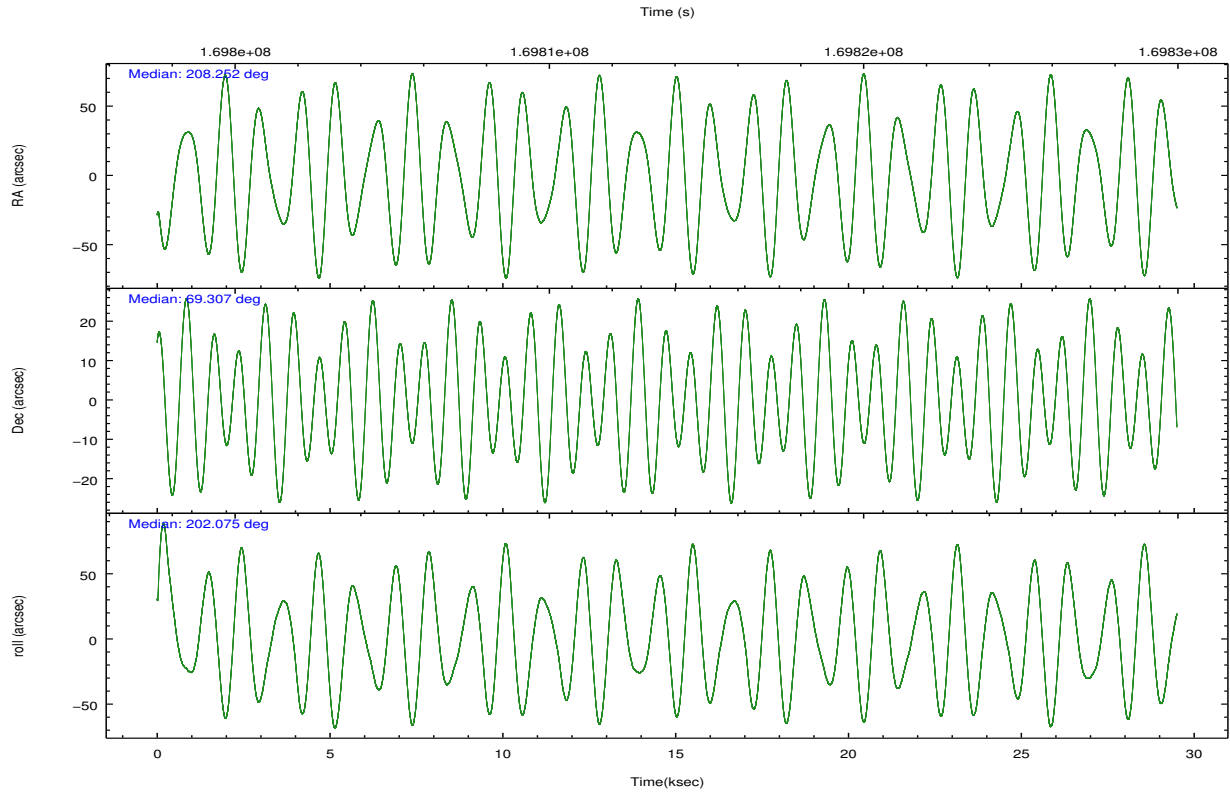
	segment 1	segment 2	segment 3
level 1 events	617316	656040	620594
rejected events	3235	3369	3275
rejected %	0%	0%	0%

2.2 Compared Parameters

Parameter	Planned	Actual	Parameter	Planned	Actual
Instrument	HRC	HRC	Obspar format version number	7	7
Detector	HRC-S	HRC-S	Obspar file type	PREDICTED	ACTUAL
Grating	LETG	LETG	Obspar update status	NONE	UPDATED
Data mode	OBSERVING	OBSERVING			
Observation mode	POINTING	POINTING			
[deg] Pointing RA	208.298736	208.2521863687203			
[deg] Pointing Dec	69.329880	69.30650257643944			
[deg] Pointing Roll	201.968040	202.0789142685232			
[mm] SIM focus pos	-1.429586	-1.428180813131781			
[mm] SIM defocus	0.1037507710433287	0.1051558262725154			
[mm] SIM translation stage pos	250.455976	250.466033080201			
[mm] SIM translation stage offset	0	-0.01005468664627074			
[s] Observation start time (MET)	169799137.184000	169797815.79873			
Observation start date	2003-05-20T06:24:33	2003-05-20T06:03:35			
[s] Observation end time (MET)	169828492.184000	169830135.0751			
Observation end date	2003-05-20T14:33:48	2003-05-20T15:02:15			

2.3 Aspect



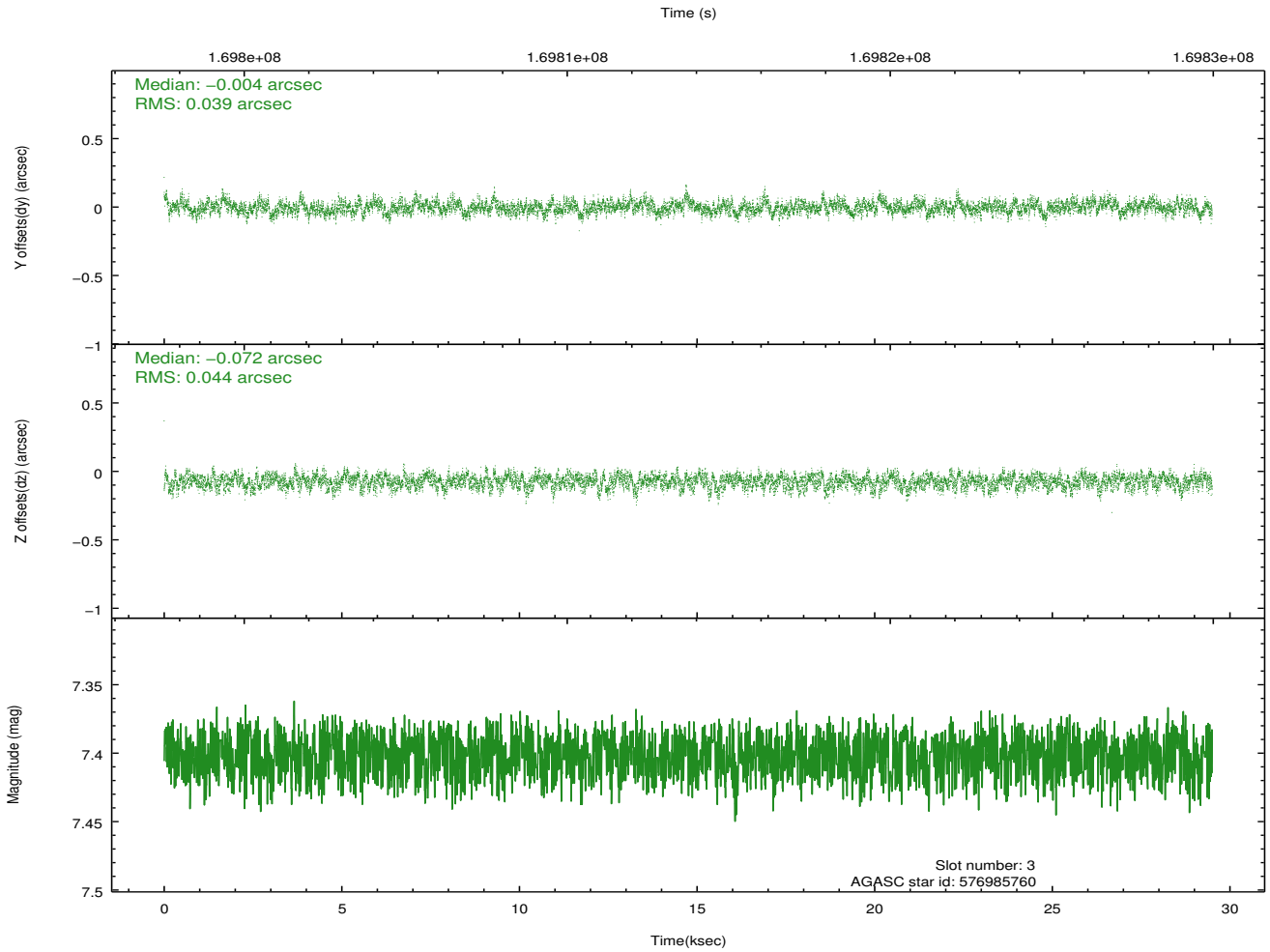
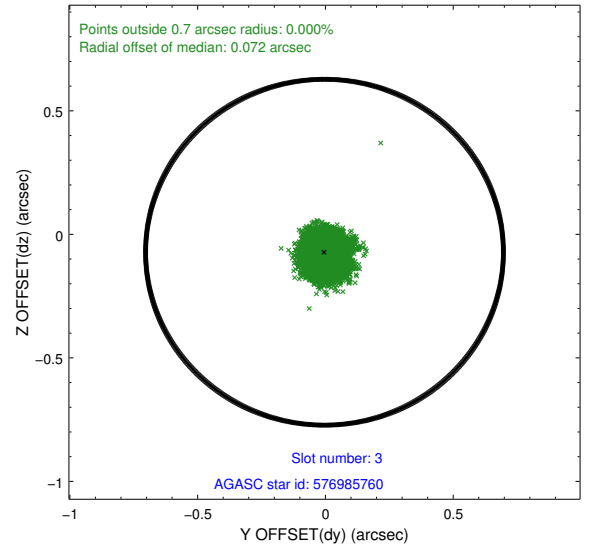
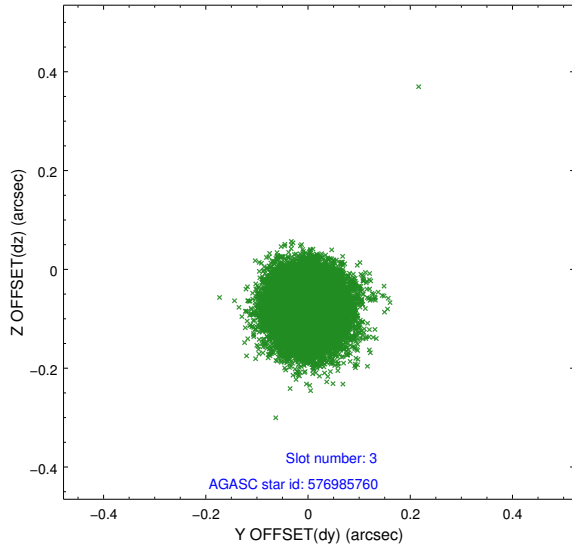


Slot Statistics

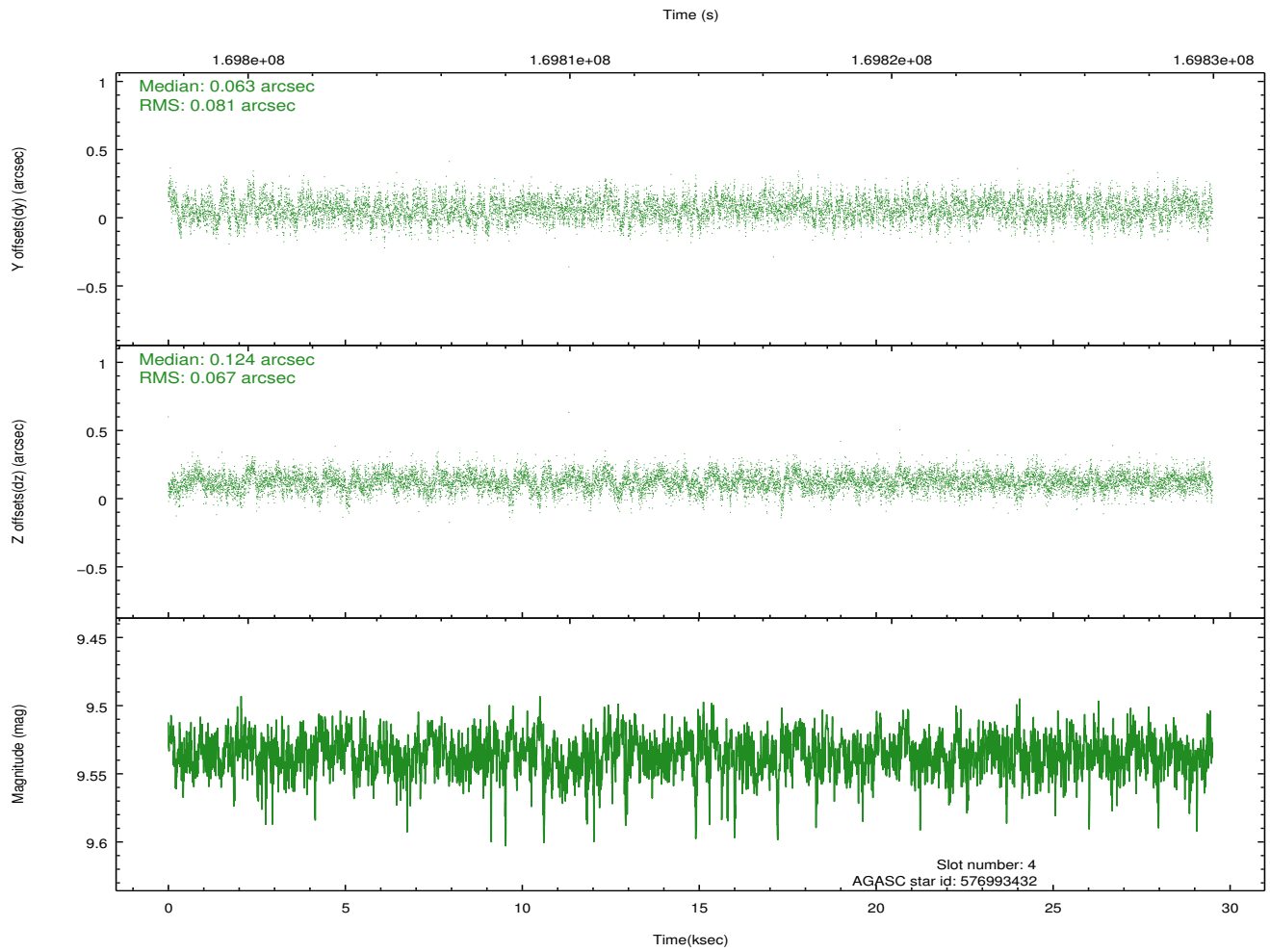
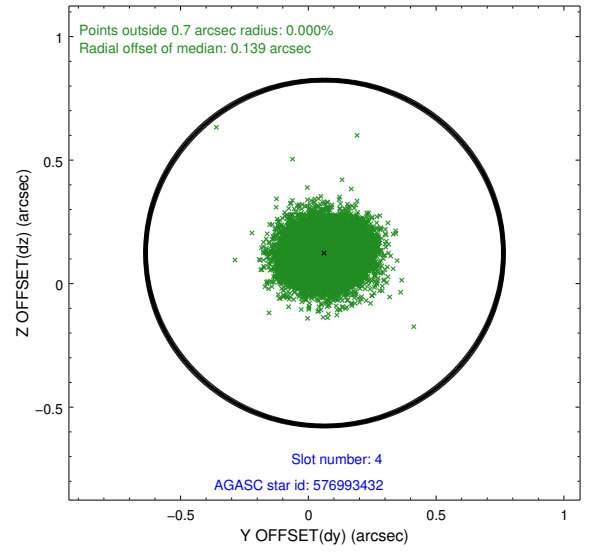
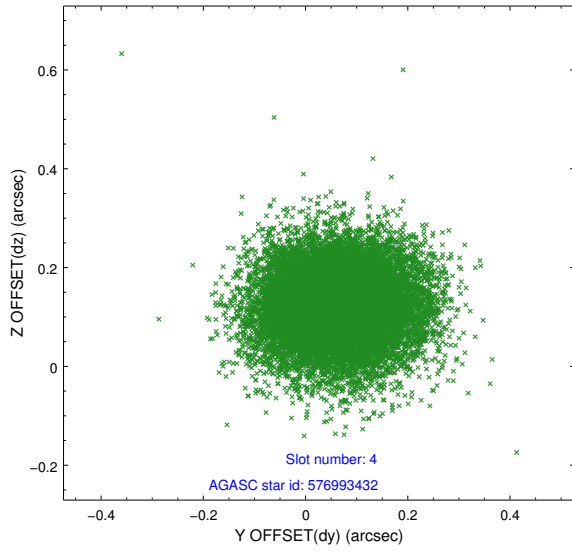
slot	status	id	mag	n_pts	med_dy	med_dz	dr1	dr2	ra	dec	mean_y	mean_z
0	FID	HRC-S-1	6.99	7194	0.133	-0.119	0.014	0.025	0.000000	0.000000	-1157.84	-457.07
1	FID	HRC-S-3	7.01	7194	0.118	-0.075	0.014	0.040	0.000000	0.000000	-1160.73	572.44
2	FID	HRC-S-4	6.96	7193	0.136	-0.101	0.007	0.016	0.000000	0.000000	1240.26	575.11
3	GUIDE	576985760	7.40	14391	-0.004	-0.072	0.063	0.100	207.721529	69.153363	922.28	309.81
4	GUIDE	576993432	9.54	14376	0.063	0.124	0.112	0.181	207.256317	68.646298	2183.70	1760.86
5	GUIDE	577120624	7.14	14389	-0.082	-0.034	0.063	0.099	208.865374	69.935124	-1465.00	-1761.71
6	GUIDE	577121192	7.87	14387	0.018	0.037	0.075	0.132	208.693523	69.547622	-754.27	-542.50
7	GUIDE	577124216	10.10	14329	0.005	-0.050	0.157	0.261	209.315908	68.857467	-592.69	2061.15

2.4 Star Slots

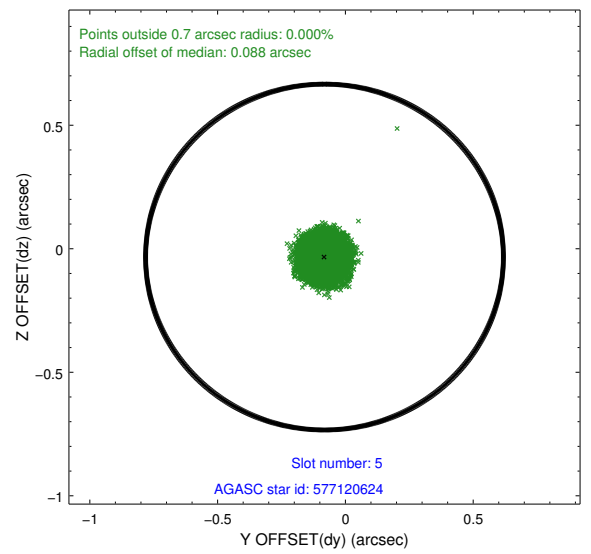
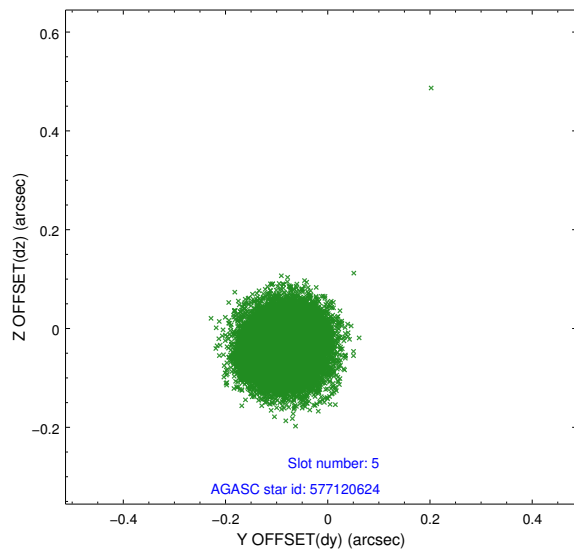
2.4.1 Slot 3



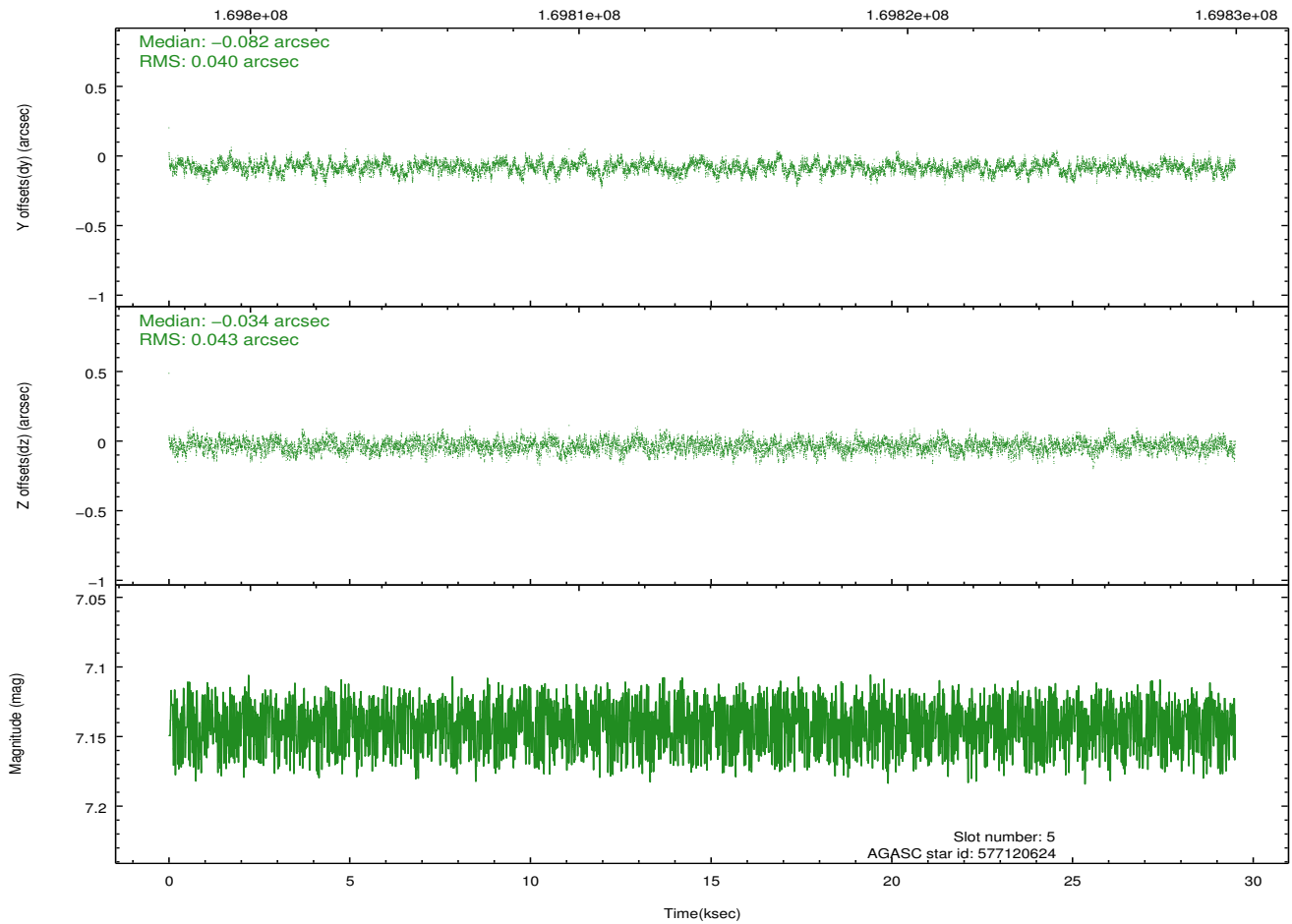
2.4.2 Slot 4



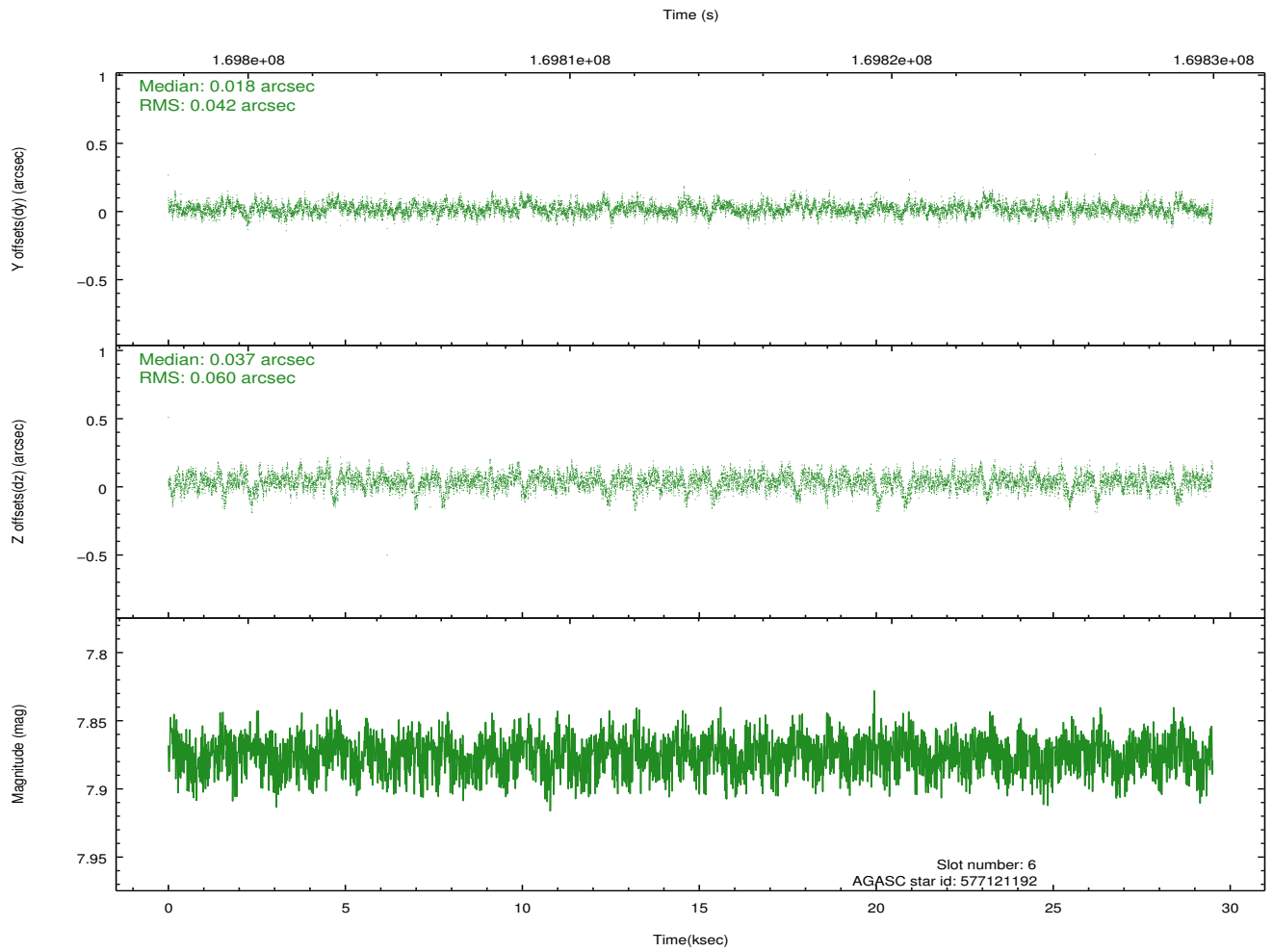
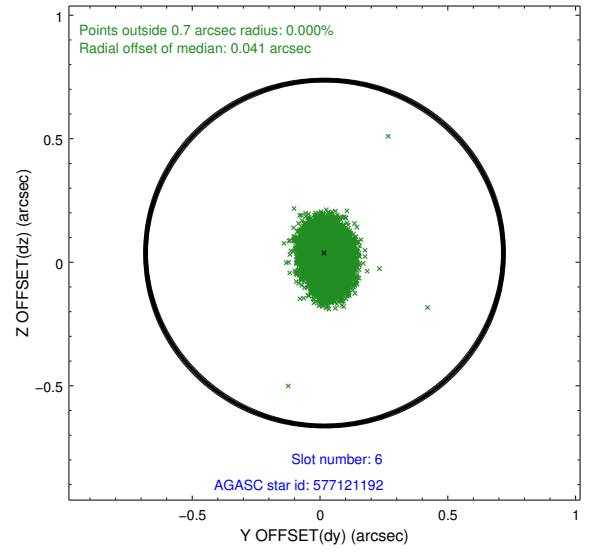
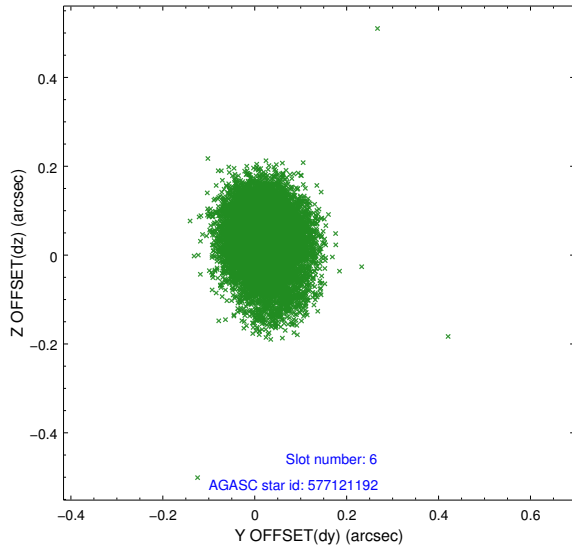
2.4.3 Slot 5



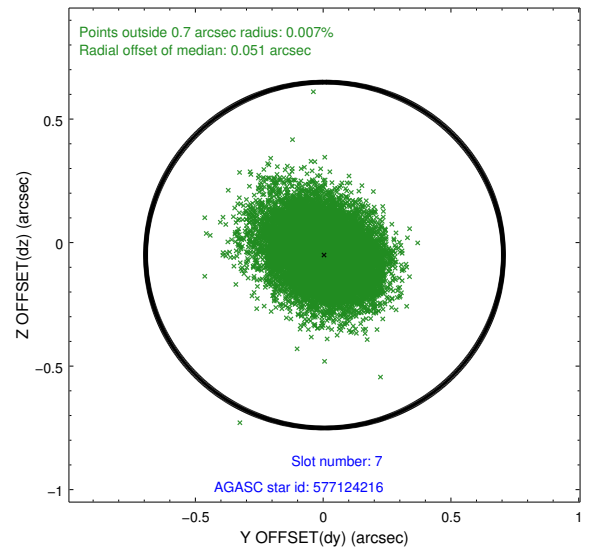
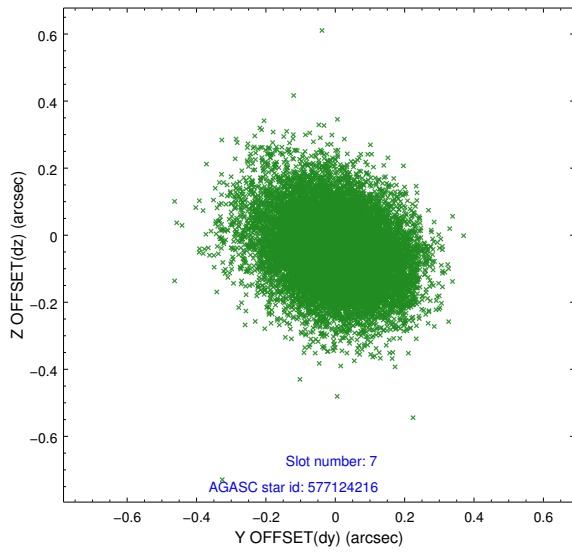
Time (s)



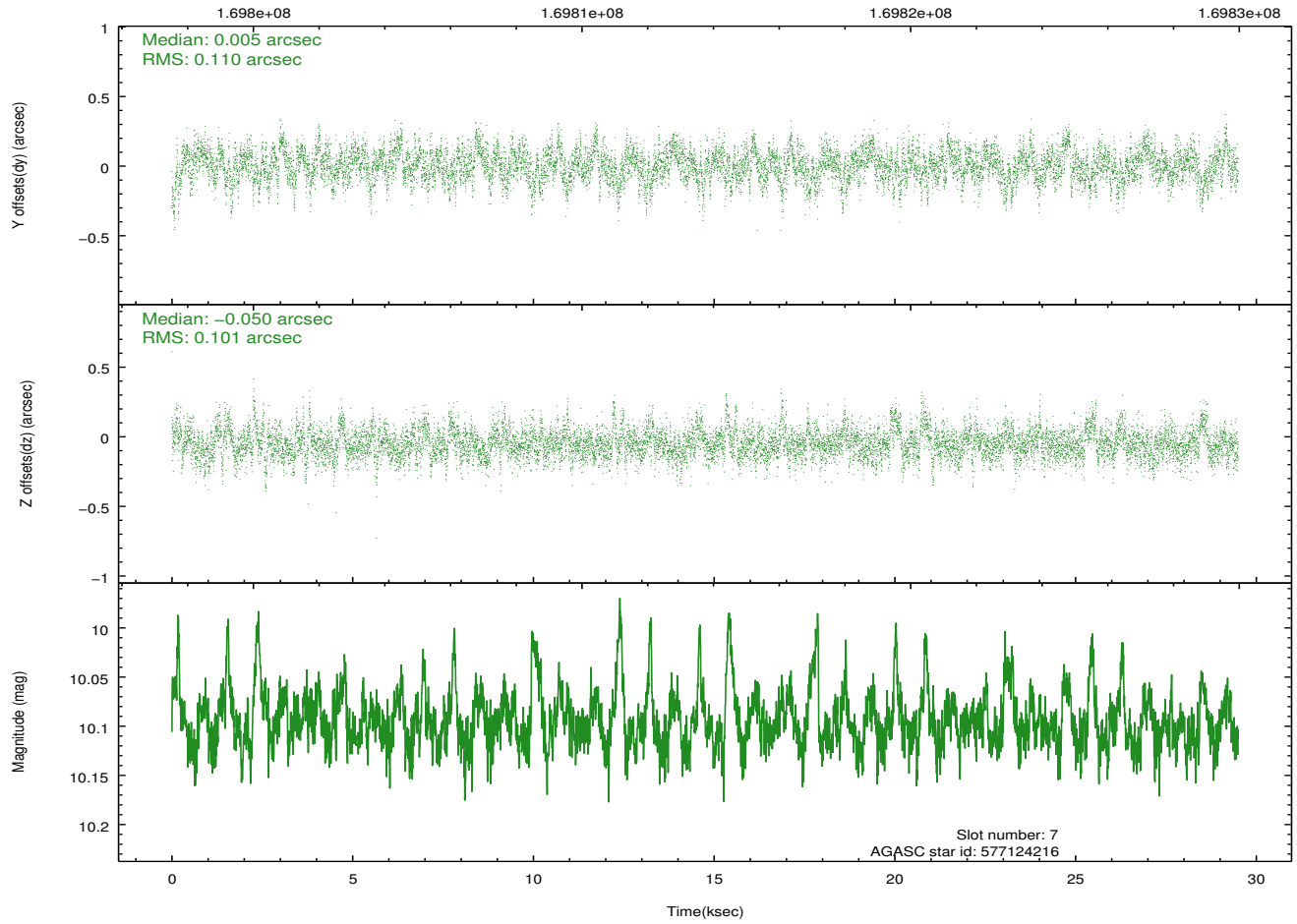
2.4.4 Slot 6



2.4.5 Slot 7

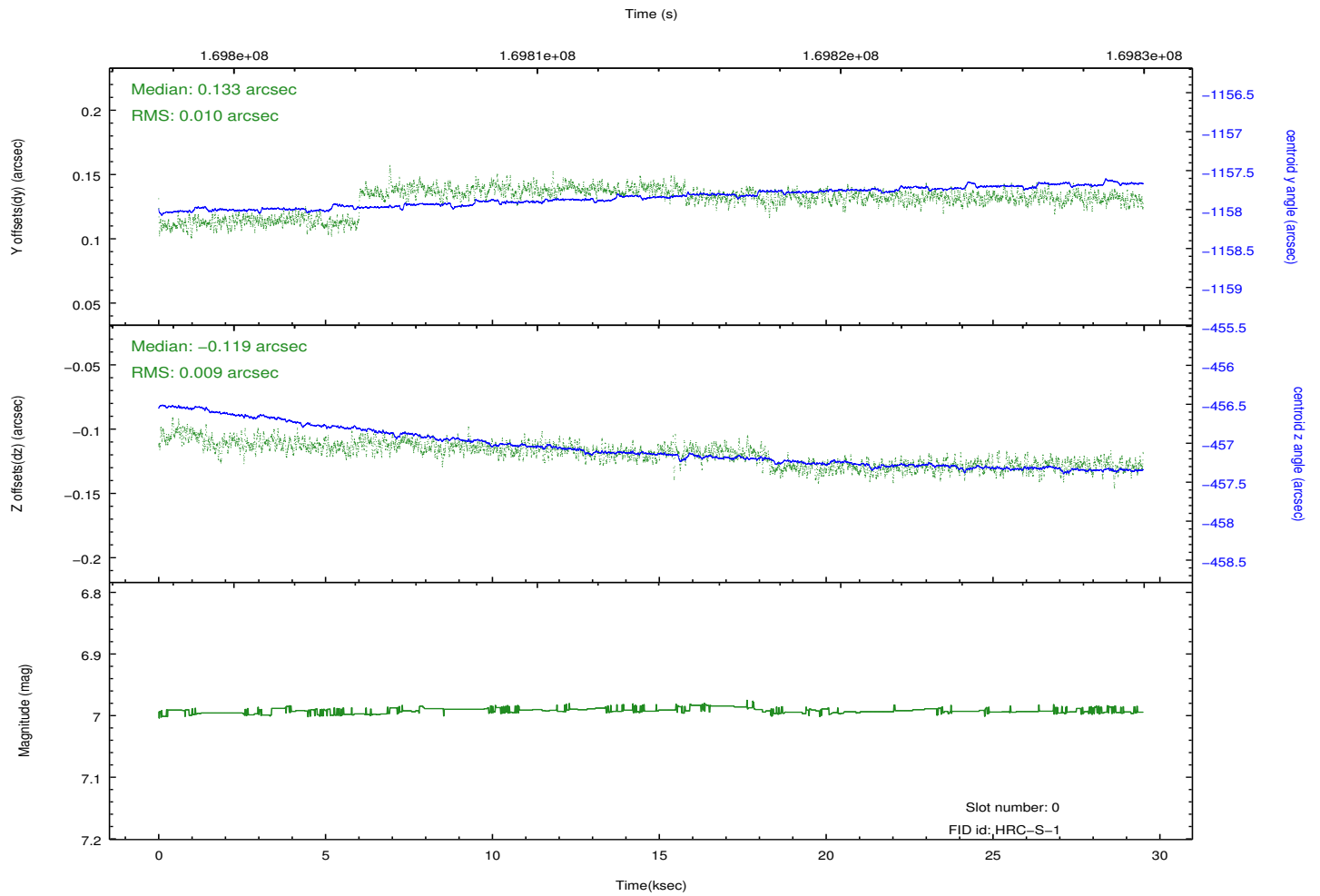
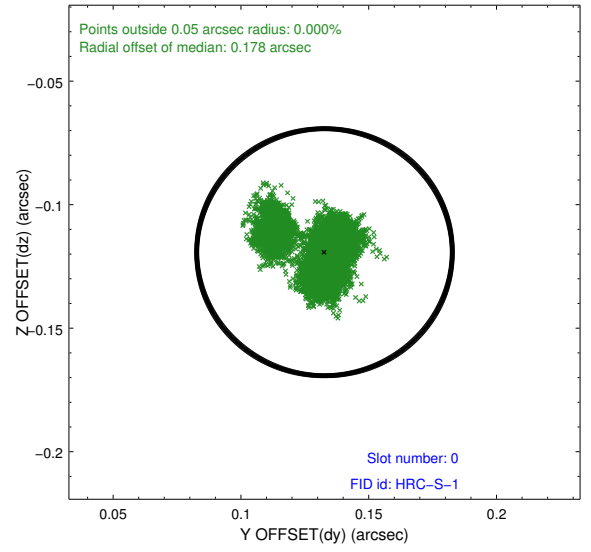
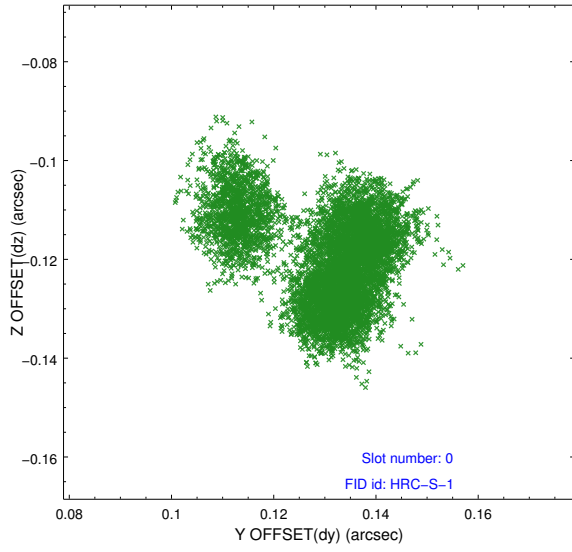


Time (s)

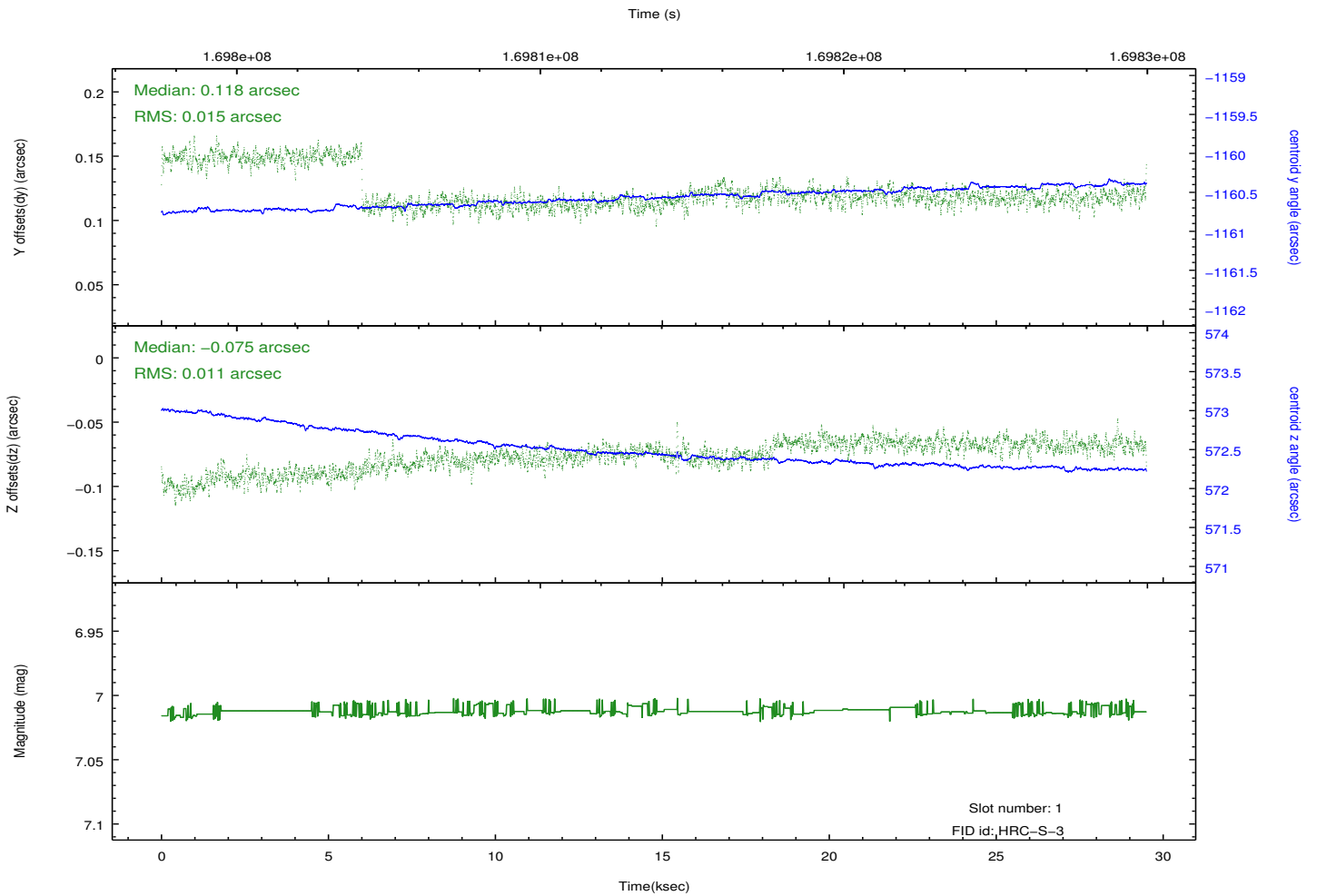
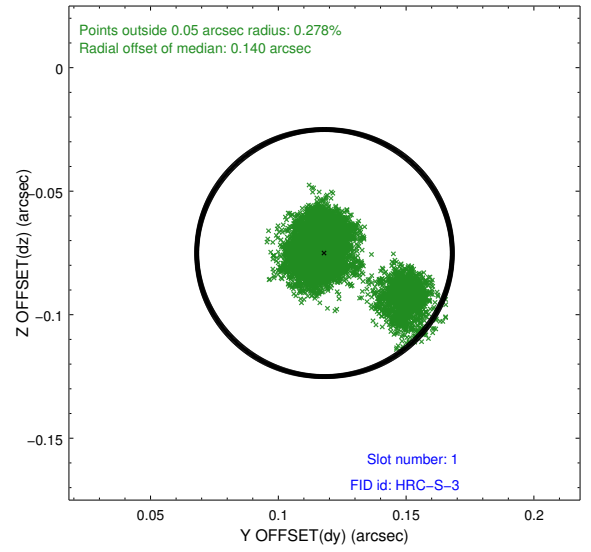
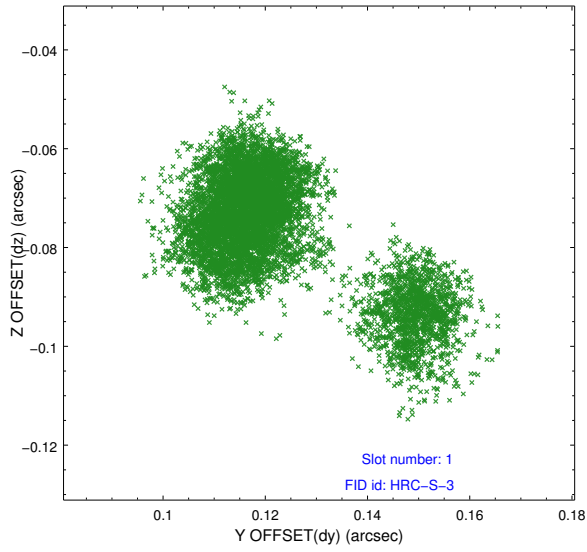


2.5 FID Slots

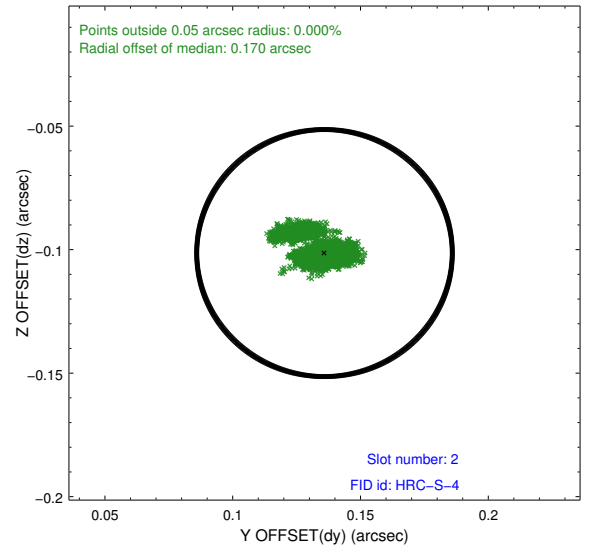
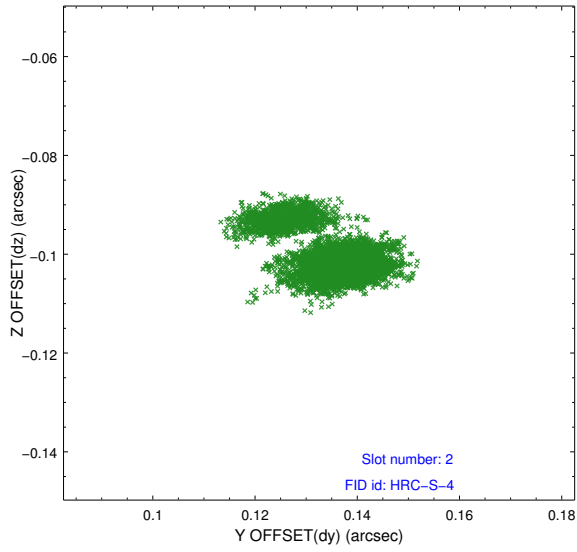
2.5.1 Slot 0



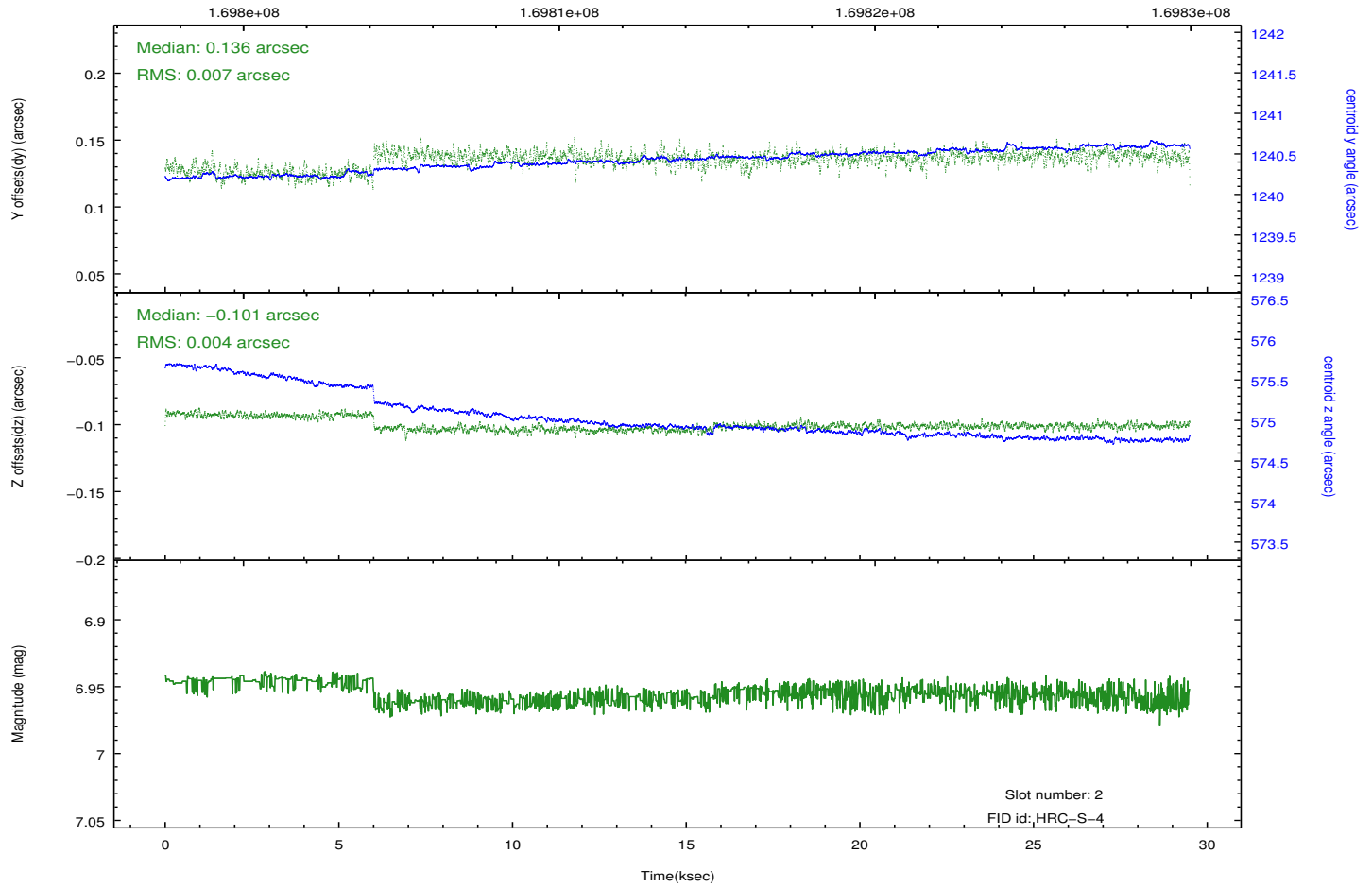
2.5.2 Slot 1



2.5.3 Slot 2

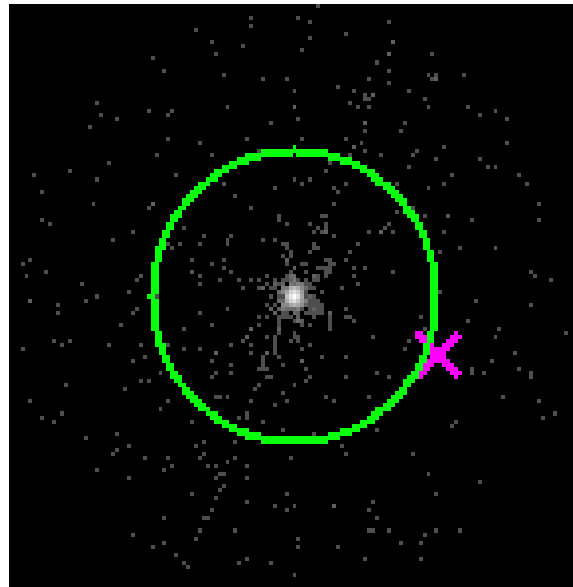


Time (s)

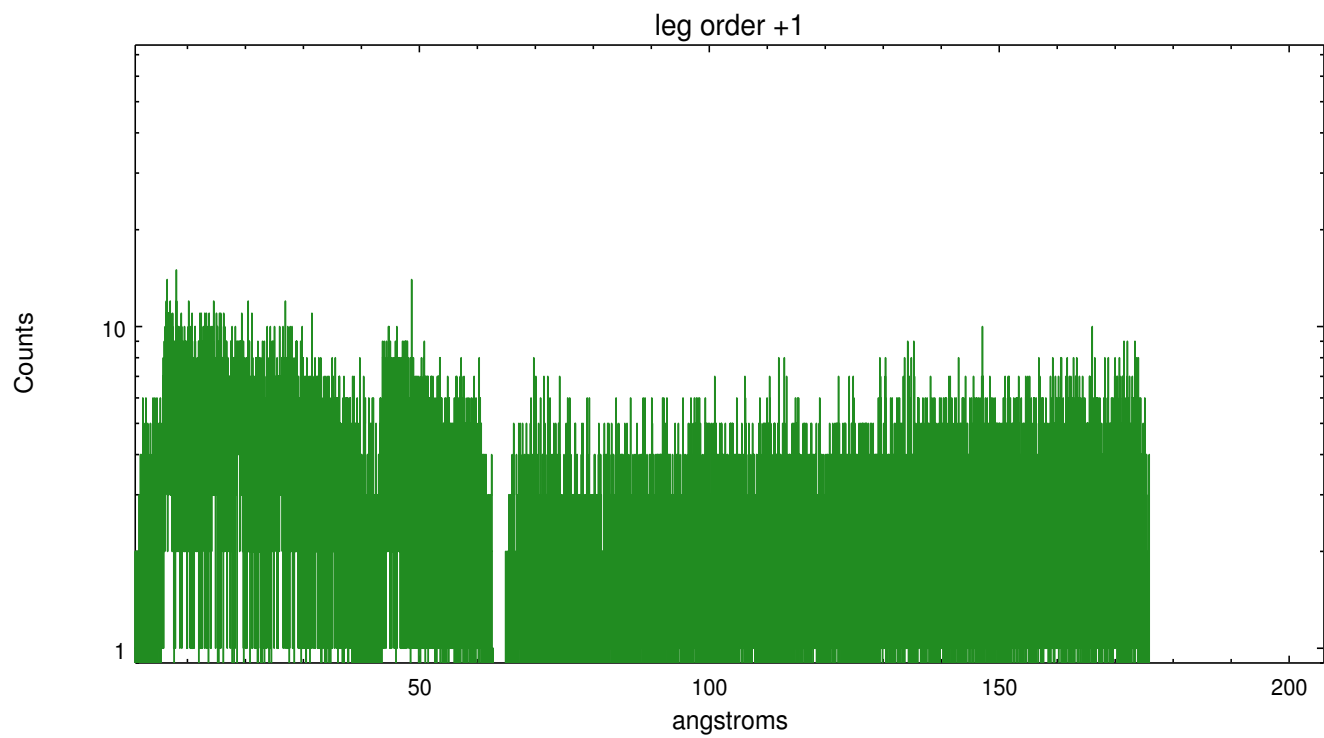
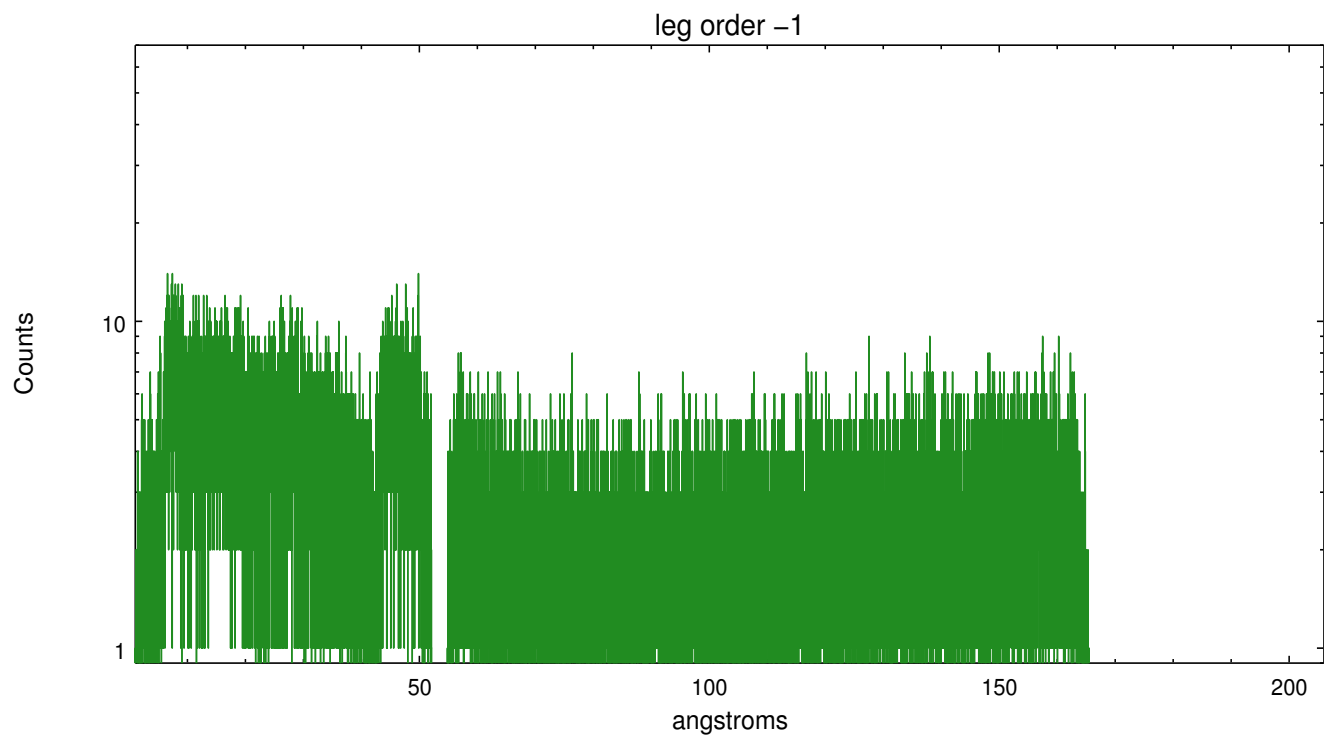


3 Gratings

3.1 LETG Arm



LETG Zero Order



A Summary

A.1 Status

V&V Scientist	Joy Nichols
V&V Date (YYYY-MM-DD)	2012.11.15
V&V Edition	1
V&V Disposition and Status	OK
V&V Charge Time	29.182

A.2 Comments