

V&V Reference Report

L2 ASCDS Version : 8.4.5

Observation 4446 - L2 Version 3
Chandra X-Ray Center

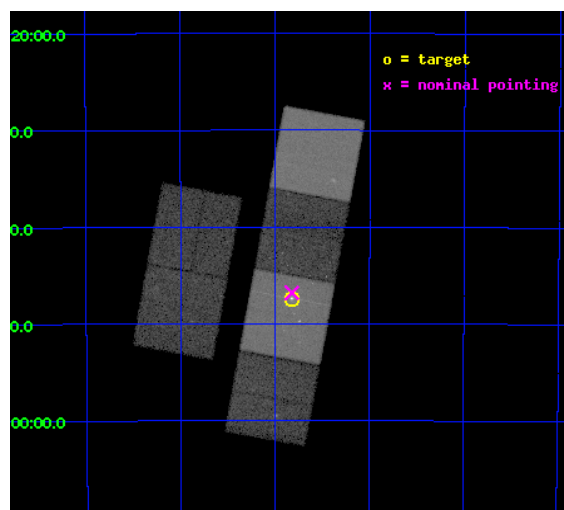
L2 Processing Date : Nov 11 2012

Contents

1	Front	2
2	OBI	3
2.1	OBI	3
2.1.1	Images	3
2.1.2	Bias	3
2.1.3	Parameters	4
2.1.4	Events	4
2.2	Compared Parameters	5
2.3	Aspect	6
2.4	Star Slots	9
2.4.1	Slot 3	9
2.4.2	Slot 4	10
2.4.3	Slot 5	11
2.4.4	Slot 6	12
2.4.5	Slot 7	13
2.5	FID Slots	14
2.5.1	Slot 0	14
2.5.2	Slot 1	15
2.5.3	Slot 2	16
A	Summary	17
A.1	Status	17
A.2	Comments	17

1 Front

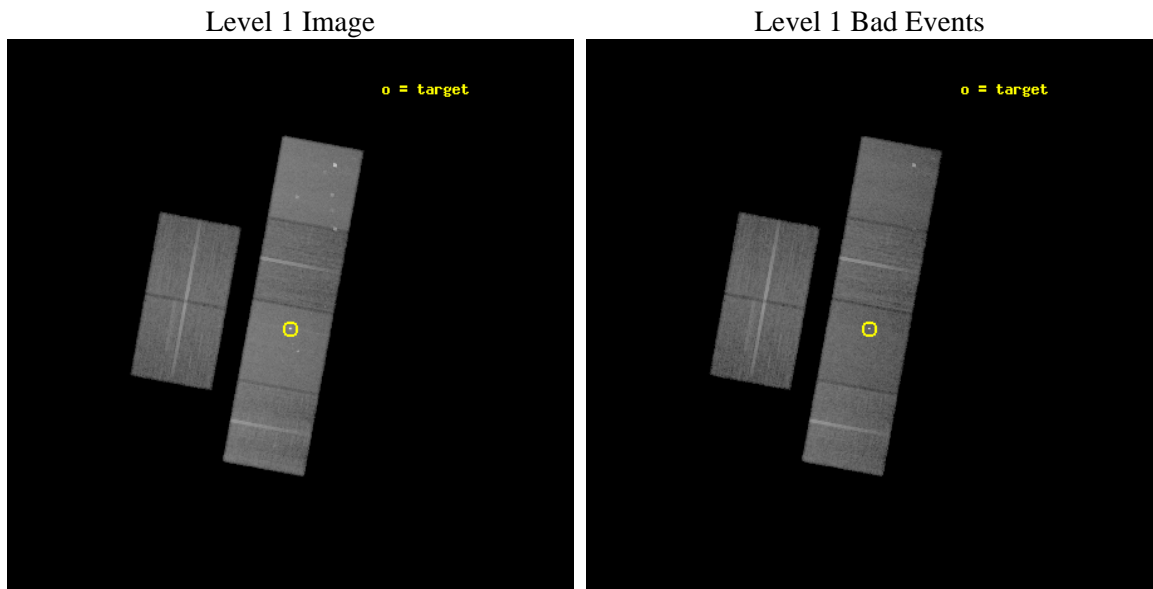
seq_num	400326	Sequence number
obs_id	4446	Observation id
title	The large-scale relativistic jet and low-luminosity spectrum of GX 339-4	Proposal title
observer	Prof. Rob Fender	Principal investigator
object	GX 339-4	Source name
dtcycle	0	
cycle	P	events from which exps? Prim/Second/Both
ra_targ	255.705833	Observer's specified target RA [deg]
dec_targ	-48.789806	Observer's specified target Dec [deg]
ra_nom	255.7057023774	Nominal RA [deg]
dec_nom	-48.780138382836	Nominal Dec [deg]
roll_nom	100.51026413991	Nominal Roll [deg]
revision	3	Processing version of data
ontime	29753.599889159	Sum of GTIs [s]
livetime	29376.841891896	Livetime [s]
ontime2	29753.599889159	Sum of GTIs [s]
ontime3	29753.599889159	Sum of GTIs [s]
ontime5	29753.599889159	Sum of GTIs [s]
ontime6	29753.599889159	Sum of GTIs [s]
ontime7	29753.599889159	Sum of GTIs [s]
ontime8	29743.877028167	Sum of GTIs [s]
l2events	316801	Number of level 2 events



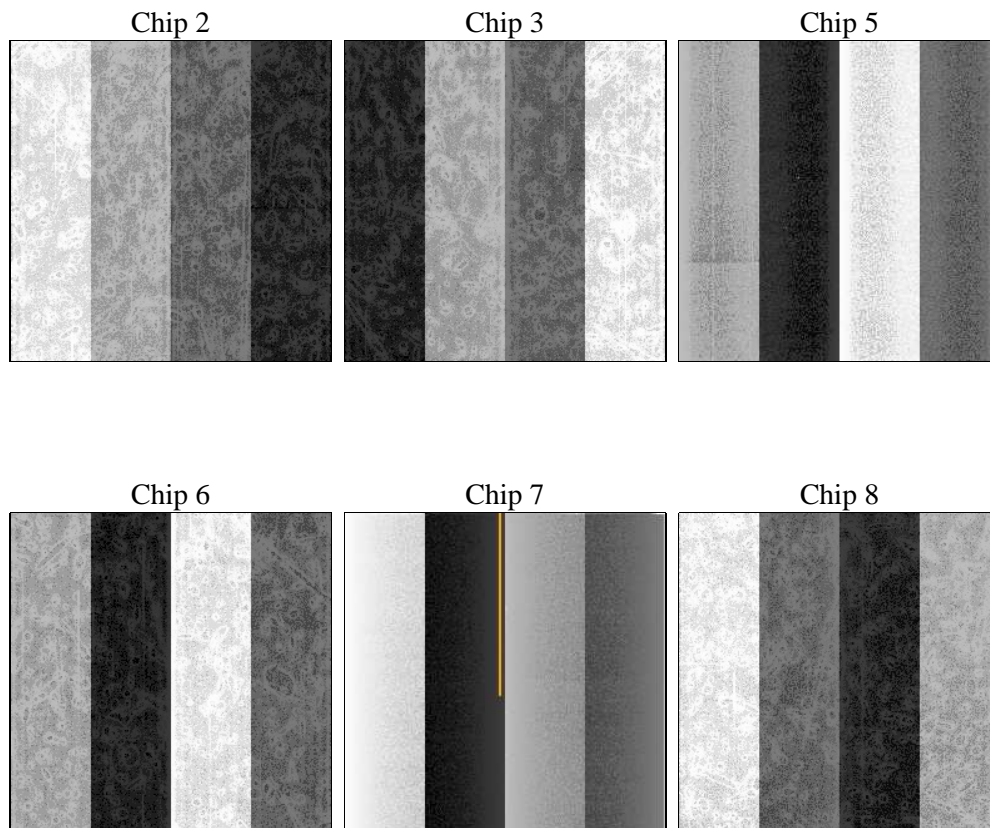
2 OBI

2.1 OBI

2.1.1 Images



2.1.2 Bias



2.1.3 Parameters

obi_num	0	Obi number	sched_exp_time	30000.000000	[s] Scheduled observation exposure time
ascdsver	8.4.5	Processing system revision	ontime	29753.599889159	Sum of GTIs [s]
caldbver	4.5.2	 	ontime2	29753.599889159	Sum of GTIs [s]
date	2012-11-11T17:08:35	Date and time of file creation	ontime3	29753.599889159	Sum of GTIs [s]
revision	3	Processing version of data	ontime5	29753.599889159	Sum of GTIs [s]
			ontime6	29753.599889159	Sum of GTIs [s]
			ontime7	29753.599889159	Sum of GTIs [s]
			ontime8	29743.877028167	Sum of GTIs [s]
			l1events	1313864	Number of level 1 events

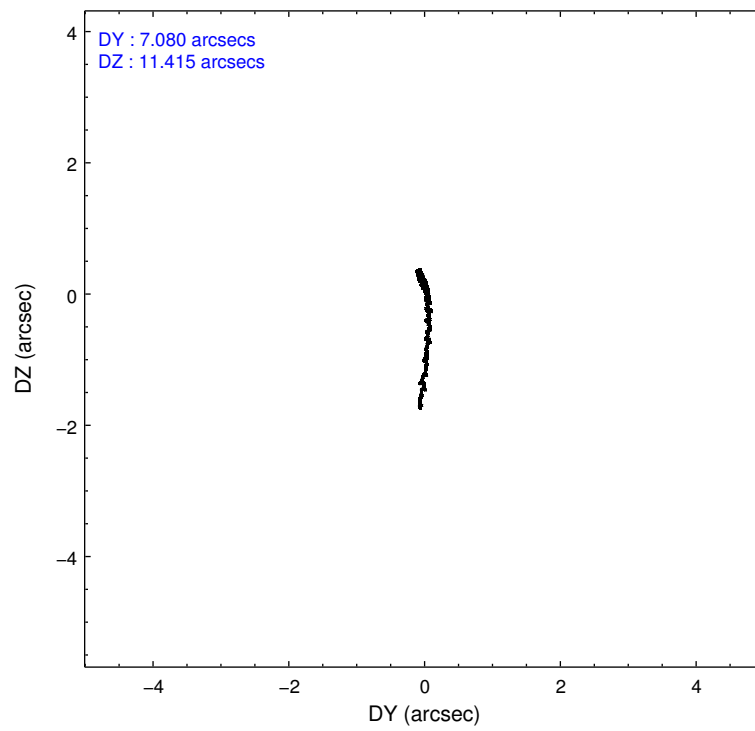
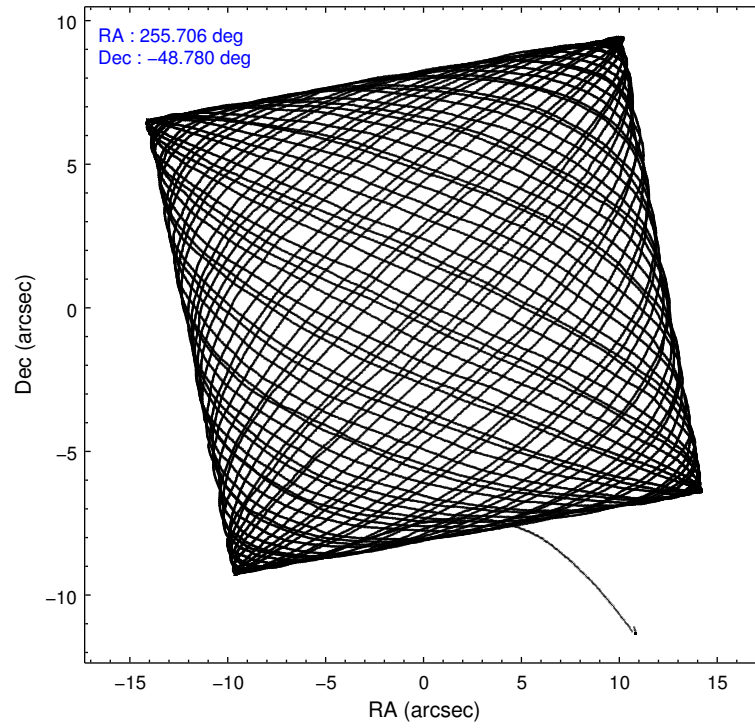
2.1.4 Events

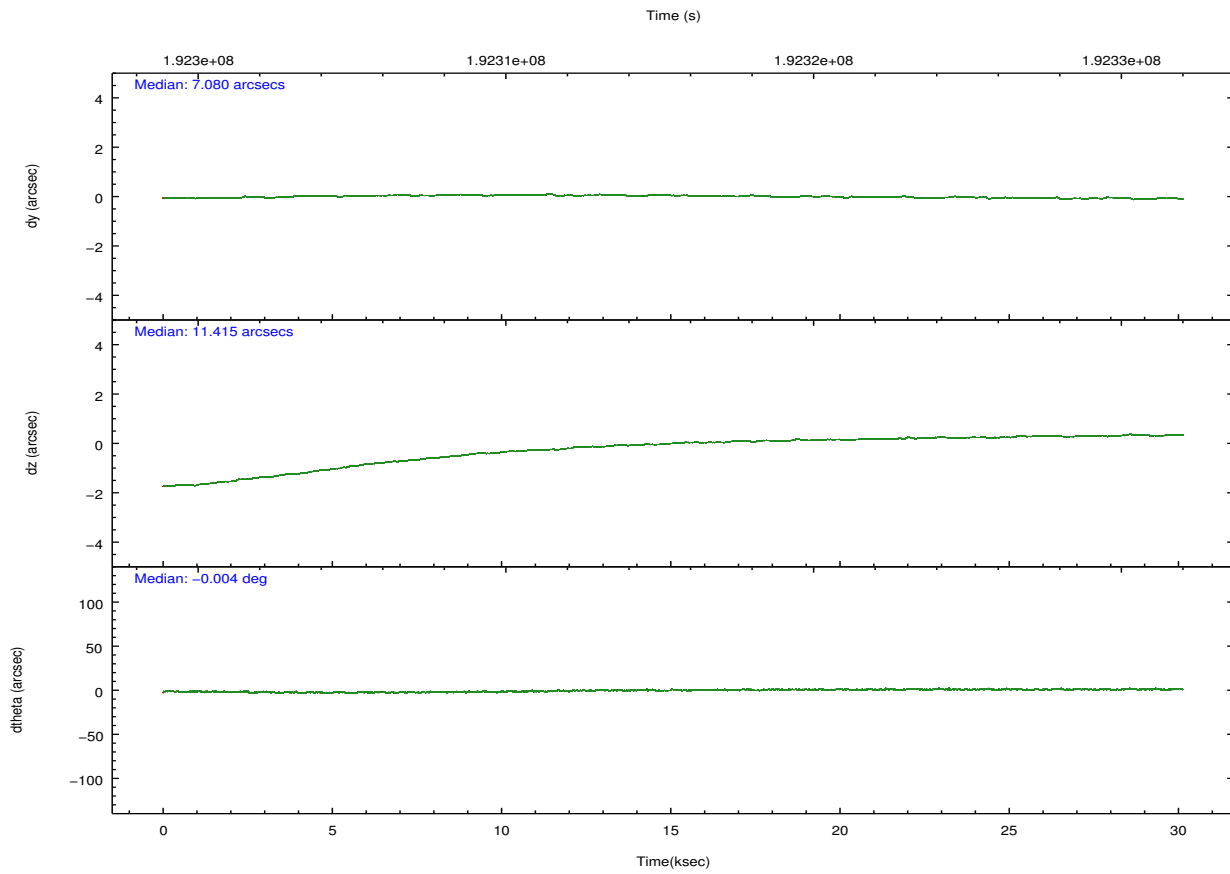
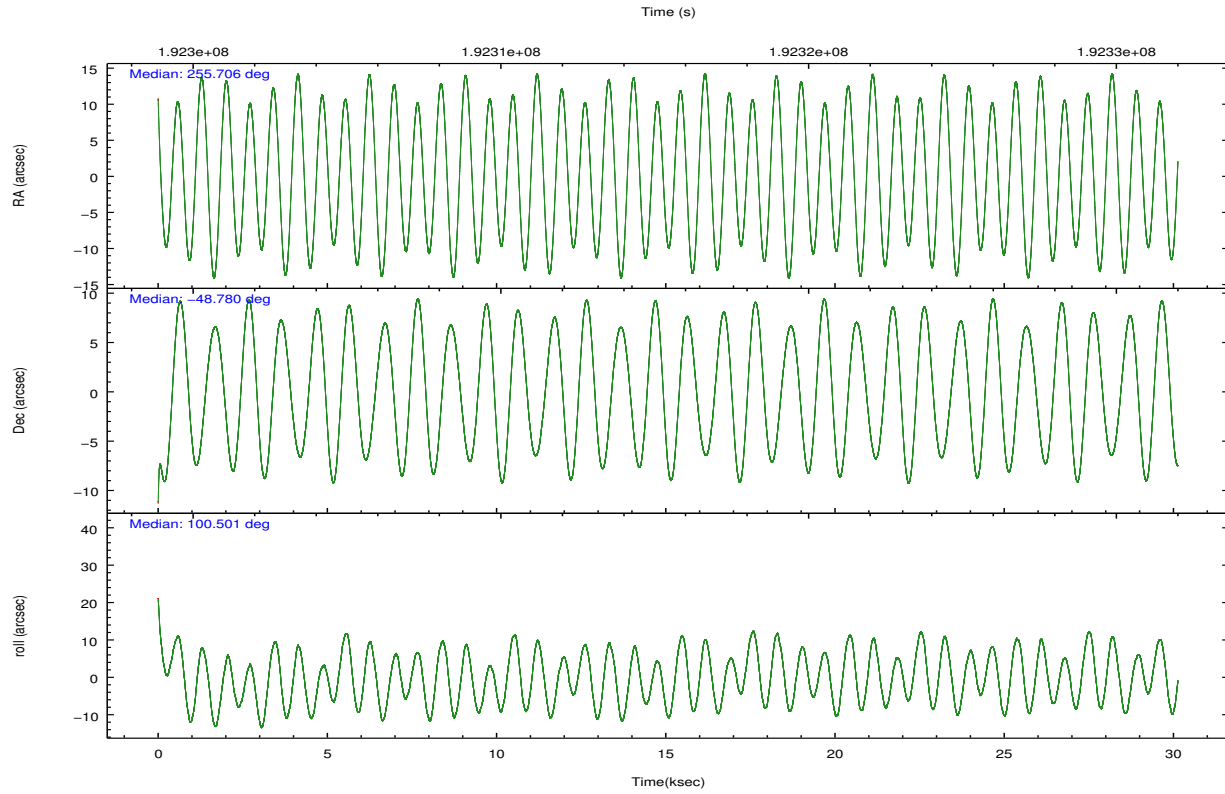
	ccd 2	ccd 3	ccd 5	ccd 6	ccd 7	ccd 8		ccd 2	ccd 3	ccd 5	ccd 6	ccd 7	ccd 8
level 1 events	182224	173016	279138	181080	268617	229789	grade 0 events	10490	10339	14028	10363	12559	16360
rejected events	159417	150766	149015	157297	151136	180775		5%	5%	5%	5%	4%	7%
rejected %	87%	87%	53%	86%	56%	78%	grade 1 events	106	117	2151	99	420	142
								0%	0%	0%	0%	0%	0%
							grade 2 events	4526	4100	39811	4681	23691	10477
								2%	2%	14%	2%	8%	4%
							grade 3 events	2049	2065	5220	2178	10489	5142
								1%	1%	1%	1%	3%	2%
							grade 4 events	2056	2006	4897	2150	10456	4869
								1%	1%	1%	1%	3%	2%
							grade 5 events	7277	7964	19885	8406	24673	10596
								3%	4%	7%	4%	9%	4%
							grade 6 events	3687	3741	66182	4412	60298	12168
								2%	2%	23%	2%	22%	5%
							grade 7 events	152033	142684	126964	148791	126031	170035
								83%	82%	45%	82%	46%	73%

2.2 Compared Parameters

Parameter	Planned	Actual	Parameter	Planned	Actual
Instrument	ACIS	ACIS	Obspar format version number	7	7
Detector	ACIS-235678	ACIS-235678	Obspar file type	PREDICTED	ACTUAL
Grating	NONE	NONE	Obspar update status	NONE	UPDATED
Data mode	FAINT	FAINT	Number of optional ACIS chips dropped	0	0
Observation mode	POINTING	POINTING	On-chip summing requested	N	N
[deg] Pointing RA	255.733007	255.7057023773992	Subarray requested	NONE	NONE
[deg] Pointing Dec	-48.800603	-48.78013838283632	Alternating exposures requested	N	N
[deg] Pointing Roll	100.374175	100.5102641399138	[s] Primary exposure time	0.000000	3.2
[s] Window start time (MET)	191246464.184000	191246464.184000			
[s] Window stop time (MET)	192888064.184000	192888064.184000			
[mm] SIM focus pos	-0.684267	-0.6828225247311905			
[mm] SIM defocus	0	0.001444936568705701			
[mm] SIM translation stage pos	-190.132523	-190.1400660498719			
[mm] SIM translation stage offset	0	0.00754346686406393			
[s] Observation start time (MET)	192300501.184000	192299322.99113			
Observation start date	2004-02-04T16:47:17	2004-02-04T16:28:42			
[s] Observation end time (MET)	192330501.184000	192331570.00504			
Observation end date	2004-02-05T01:07:17	2004-02-05T01:26:10			
Read mode	TIMED	TIMED			

2.3 Aspect



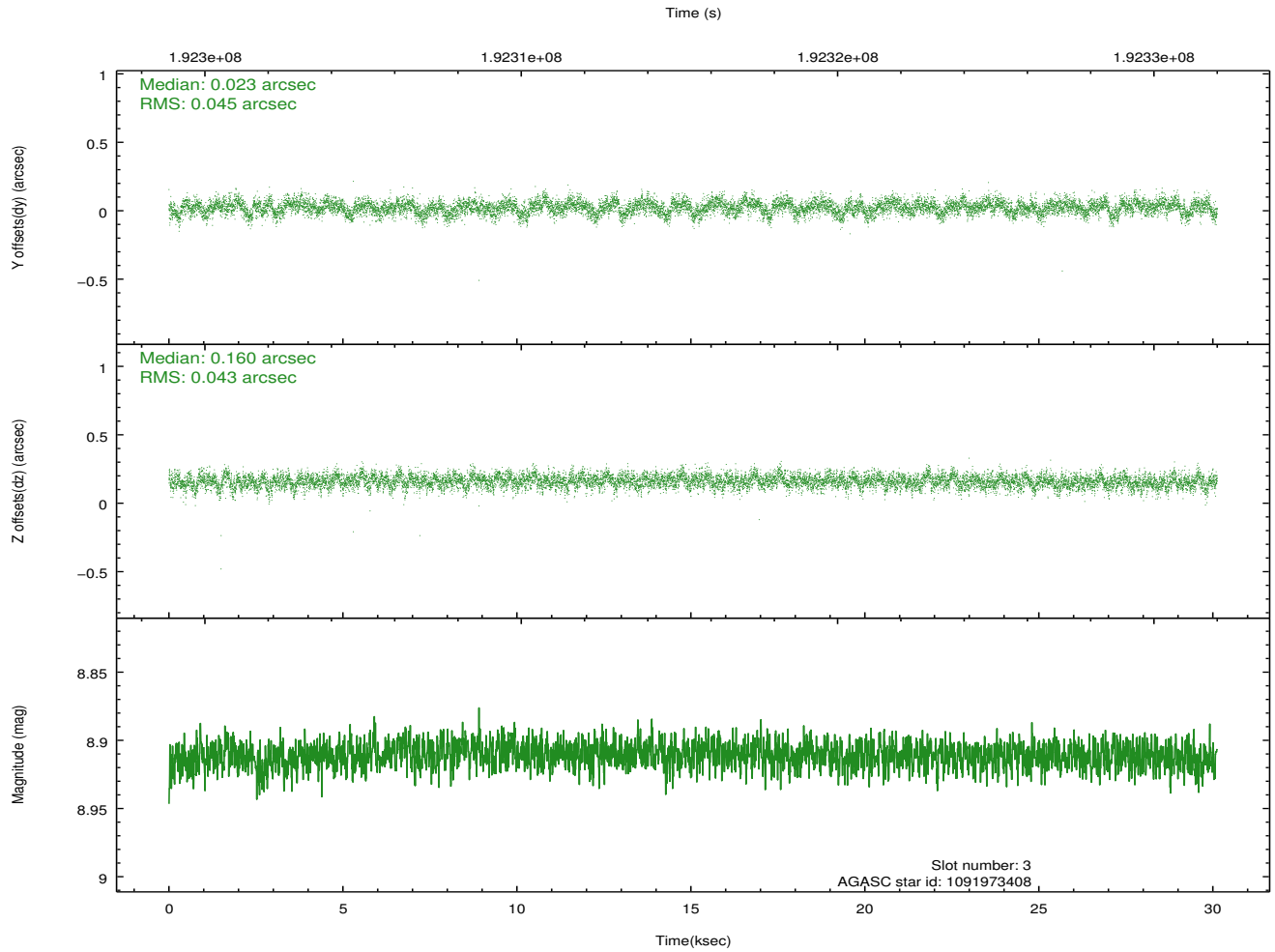
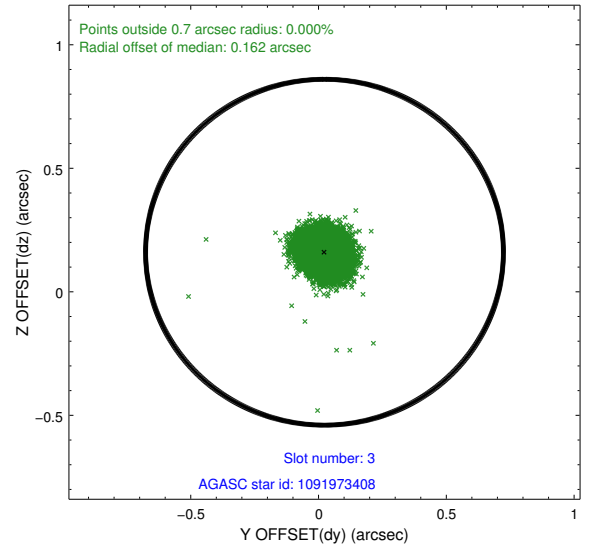
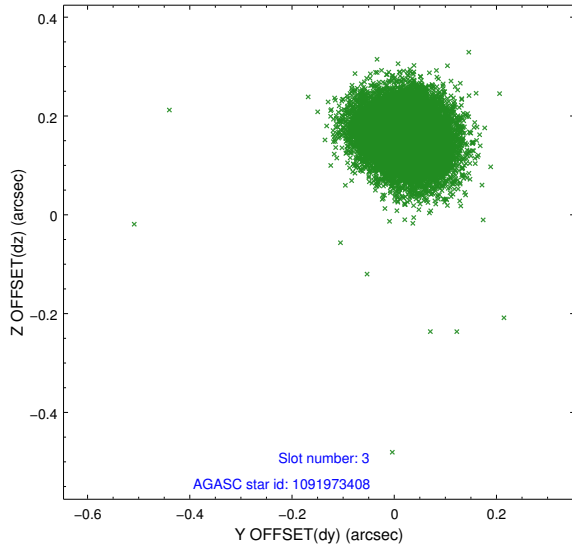


Slot Statistics

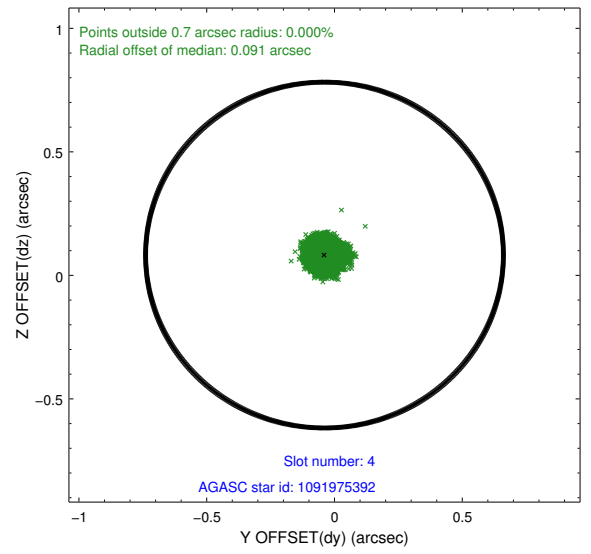
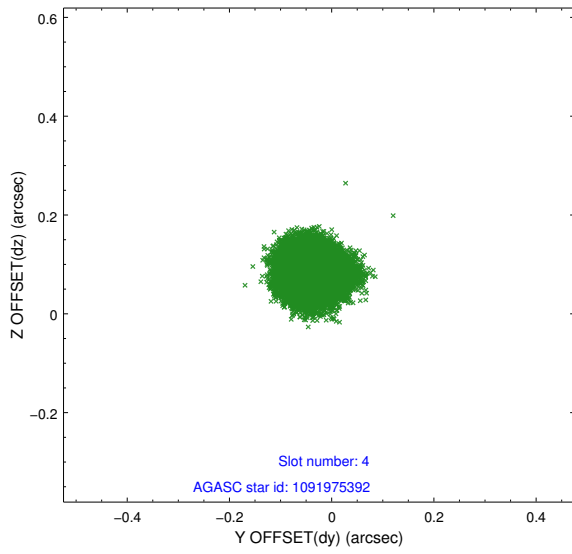
slot	status	id	mag	n_pts	med_dy	med_dz	dr1	dr2	ra	dec	mean_y	mean_z
0	FID	ACIS-S-2	7.10	7350	-0.031	-0.006	0.014	0.021	0.000000	0.000000	-759.85	-1732.43
1	FID	ACIS-S-4	7.20	7350	0.055	0.018	0.014	0.022	0.000000	0.000000	2153.47	176.03
2	FID	ACIS-S-5	7.23	7349	-0.053	-0.002	0.010	0.020	0.000000	0.000000	-1812.63	169.73
3	GUIDE	1091973408	8.91	14692	0.023	0.160	0.066	0.107	255.800233	-48.601800	675.45	-286.14
4	GUIDE	1091975392	6.42	14699	-0.039	0.082	0.048	0.076	255.805002	-48.336791	1611.69	-469.94
5	GUIDE	1092111344	9.96	14692	-0.180	0.245	0.117	0.188	256.132869	-48.213784	1903.26	-1323.15
6	GUIDE	1092491384	9.13	14685	0.218	-0.018	0.080	0.128	254.923973	-49.184437	-1026.12	2122.84
7	GUIDE	1092485728	6.89	14698	-0.021	-0.477	0.070	0.122	254.773222	-48.875124	131.05	2285.77

2.4 Star Slots

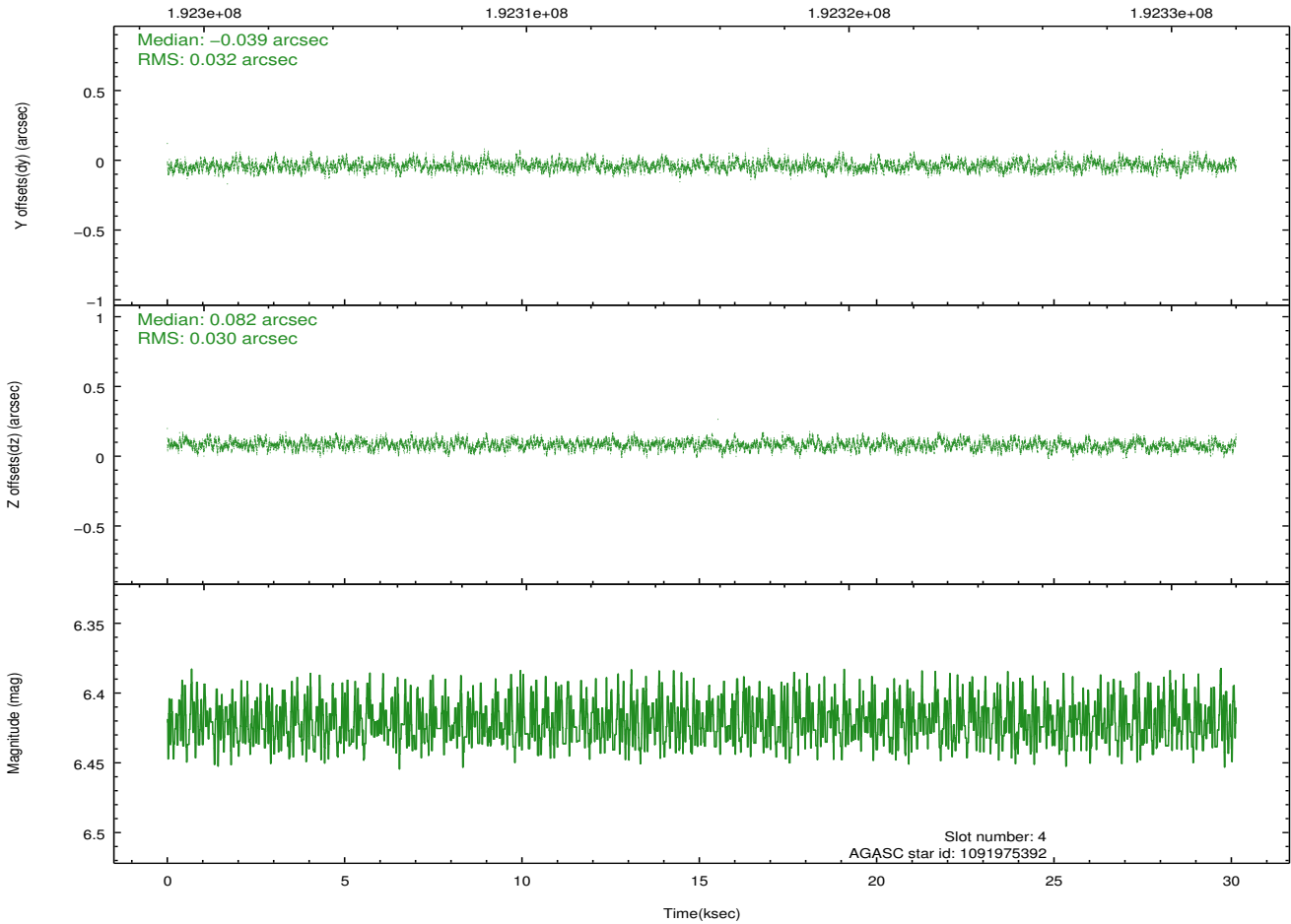
2.4.1 Slot 3



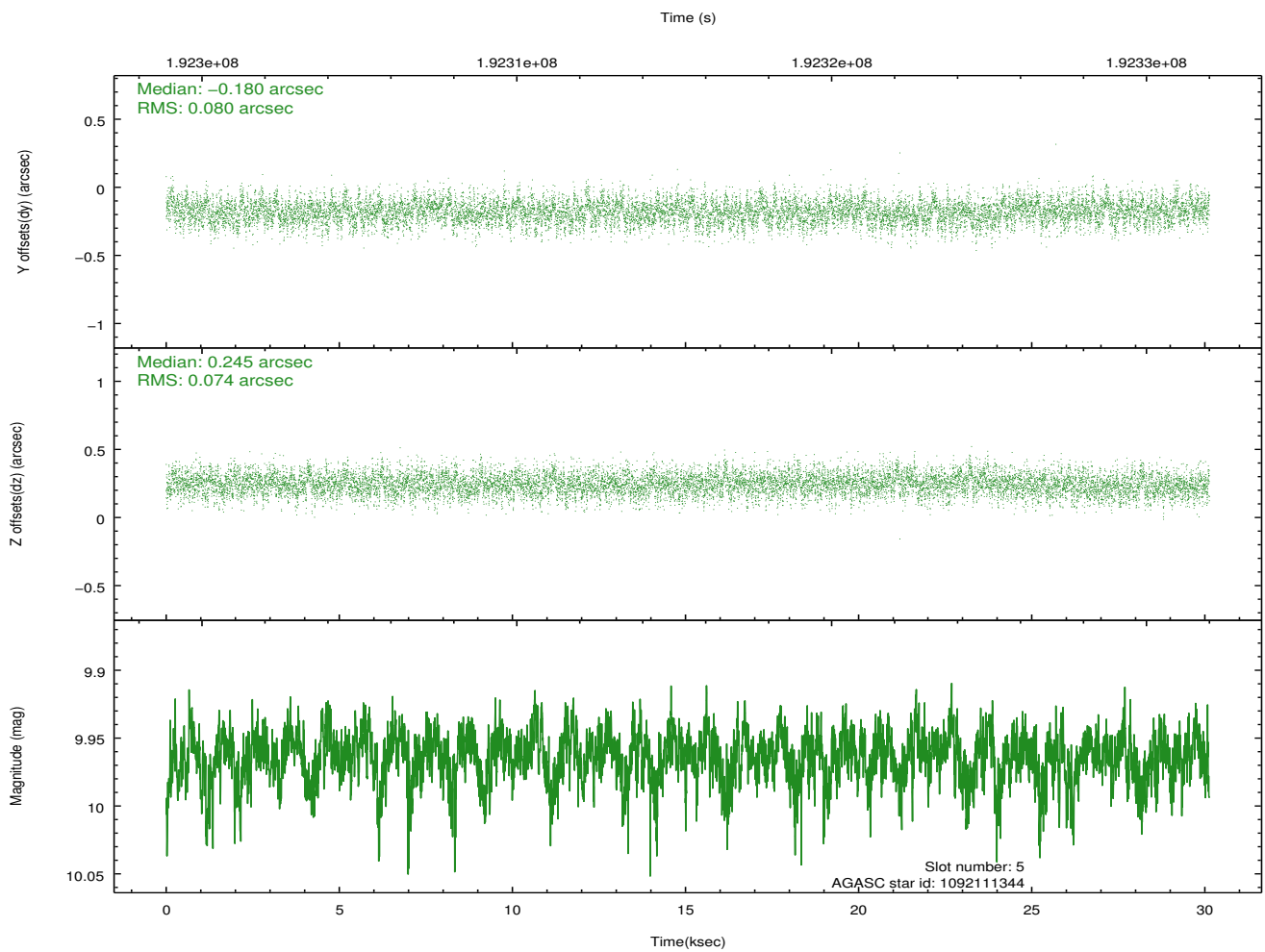
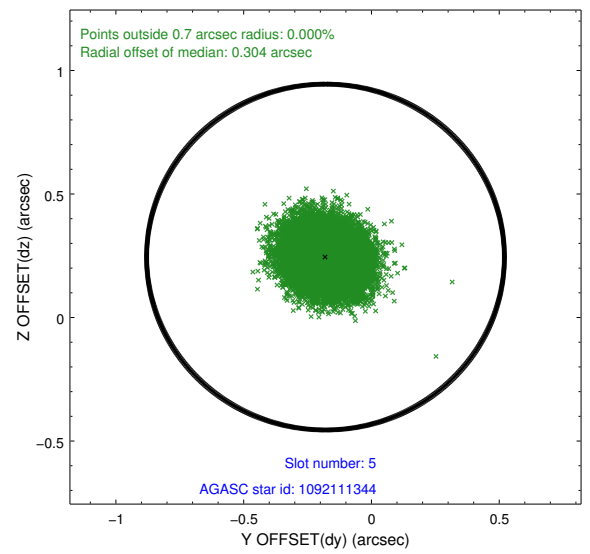
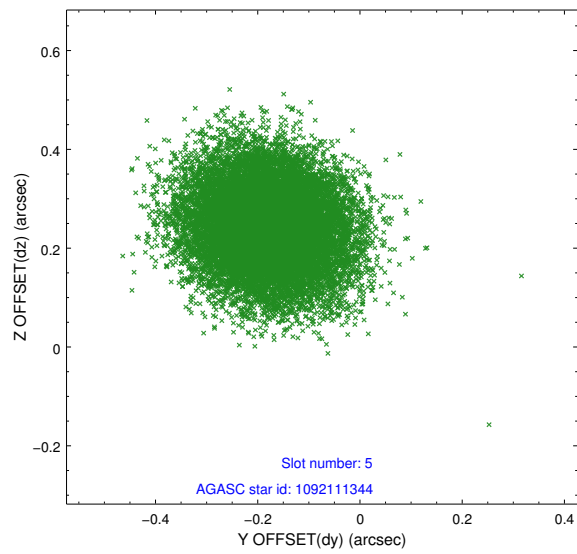
2.4.2 Slot 4



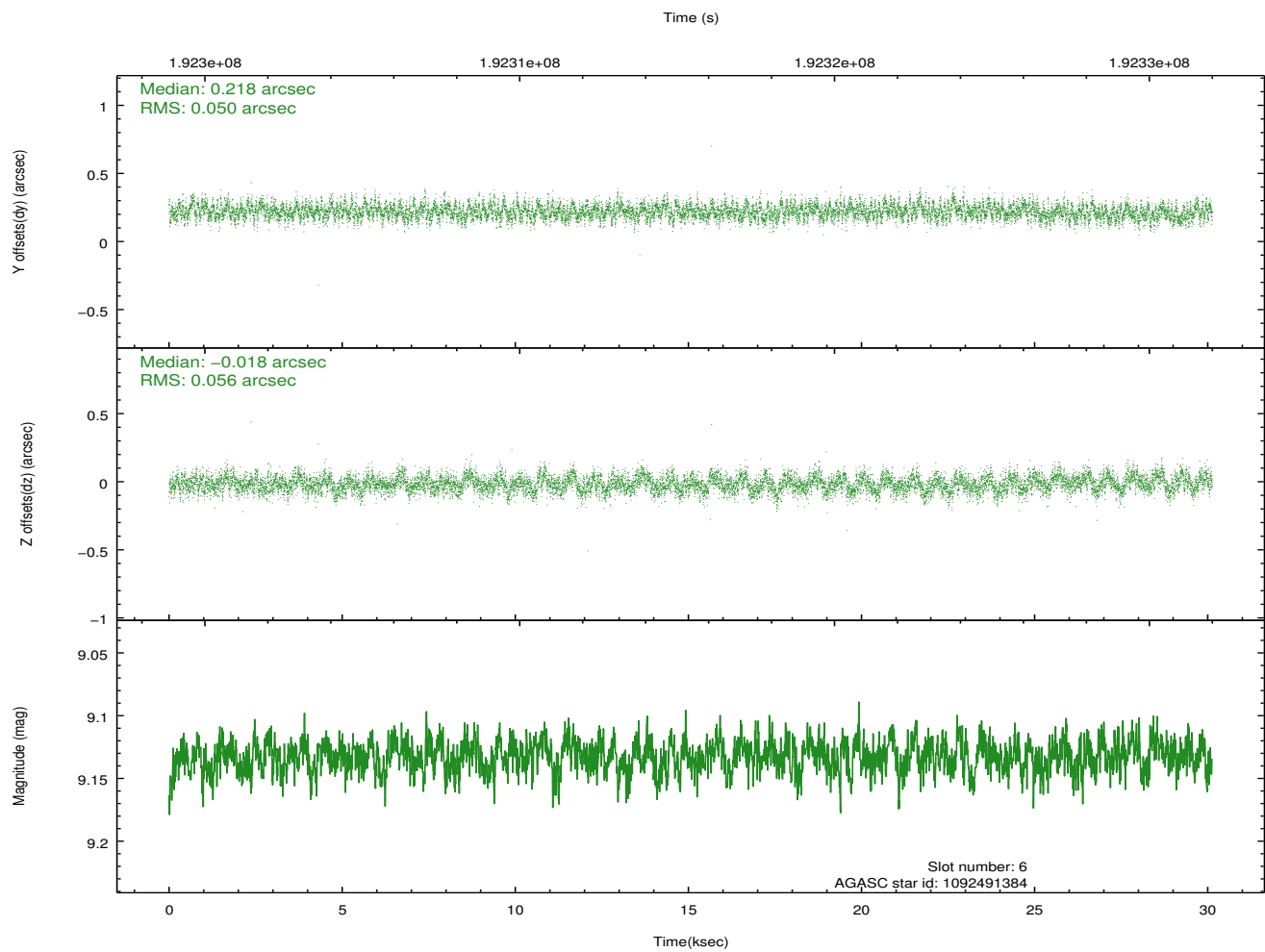
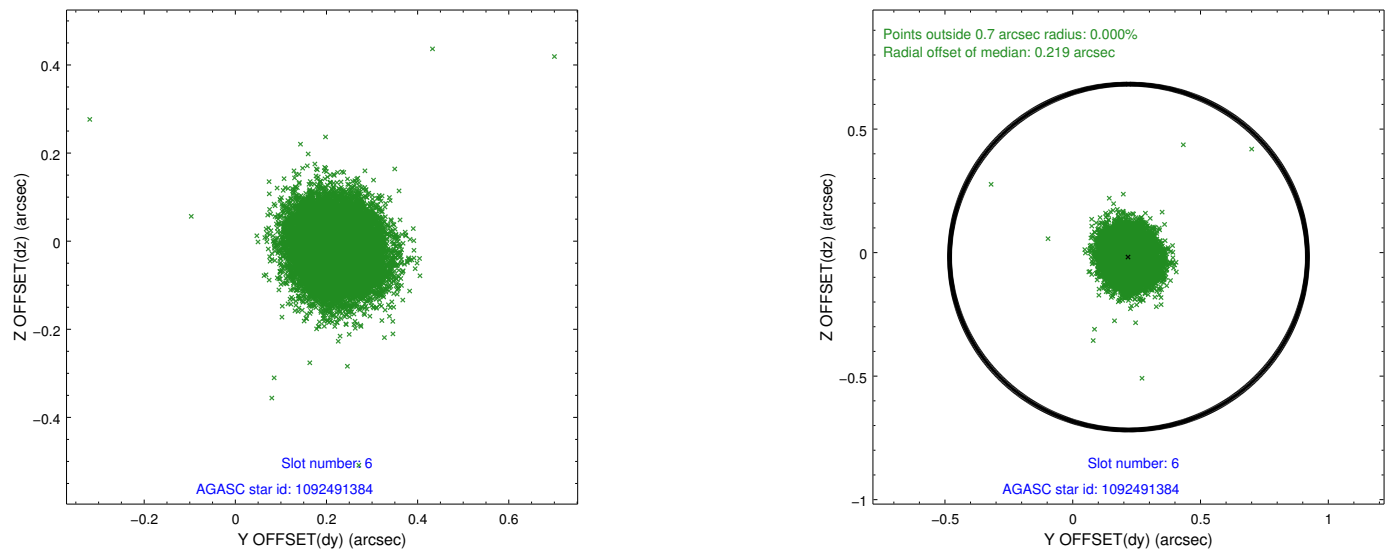
Time (s)



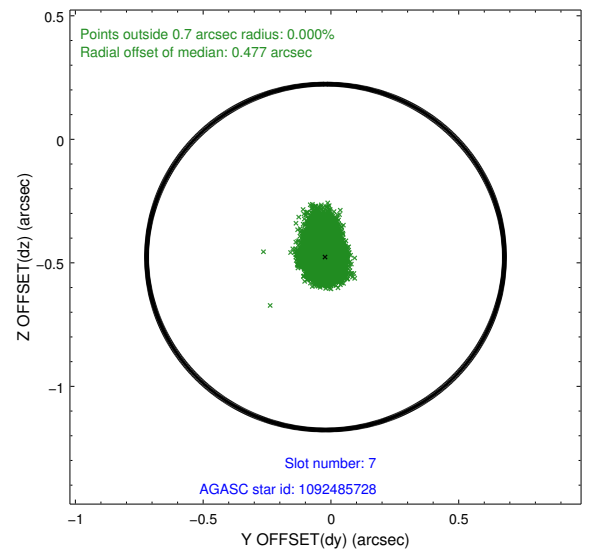
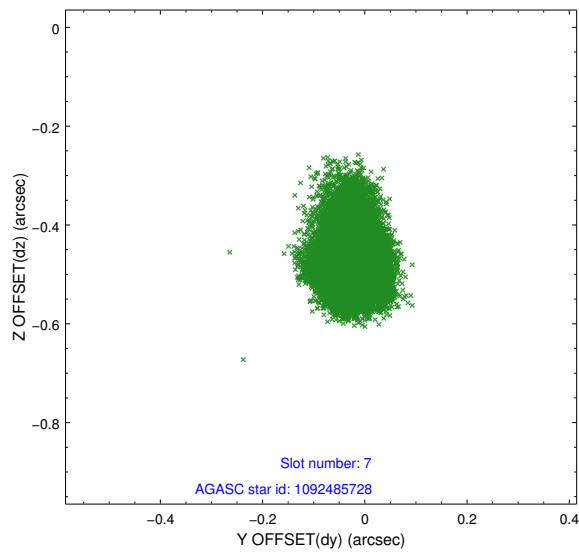
2.4.3 Slot 5



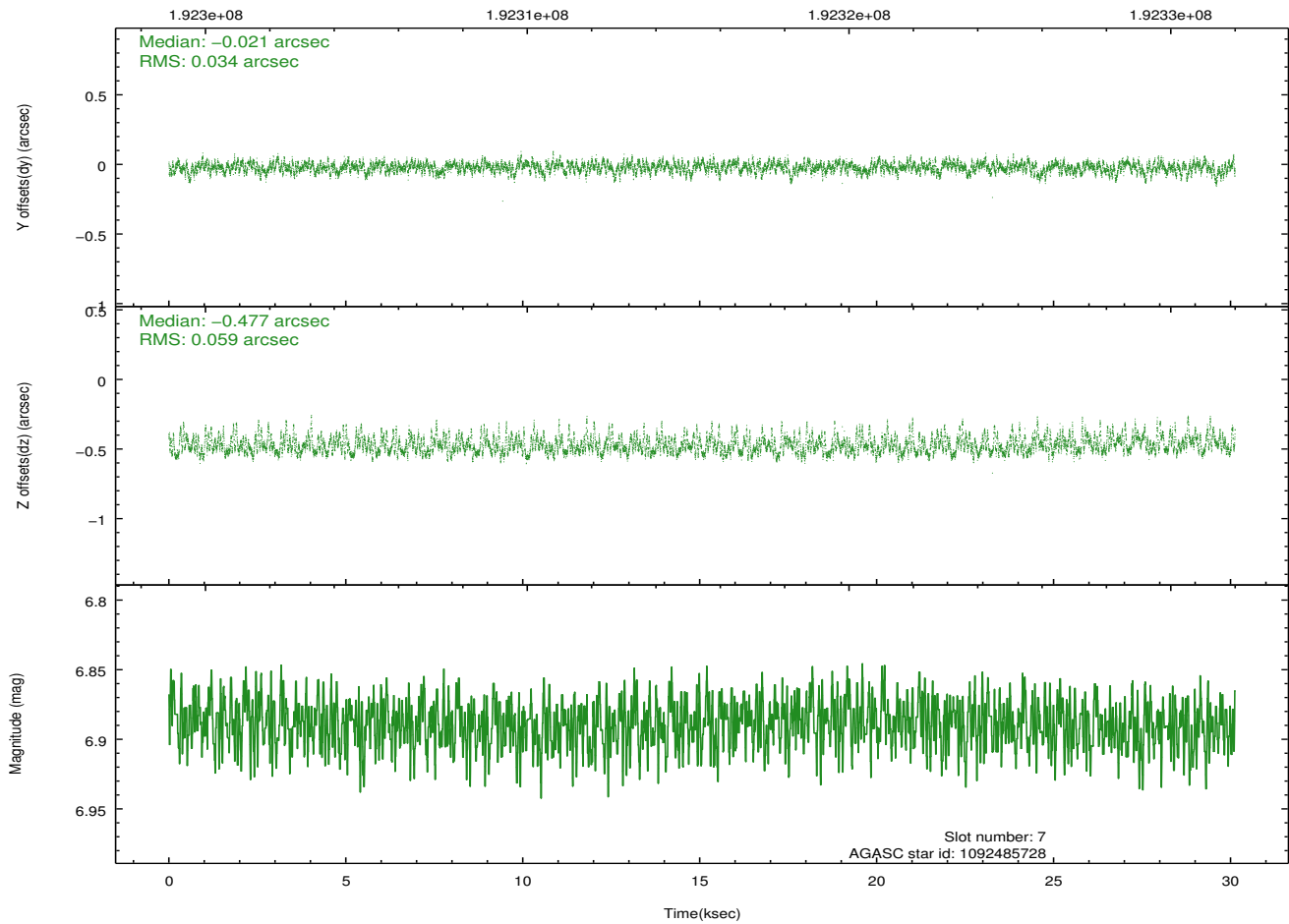
2.4.4 Slot 6



2.4.5 Slot 7

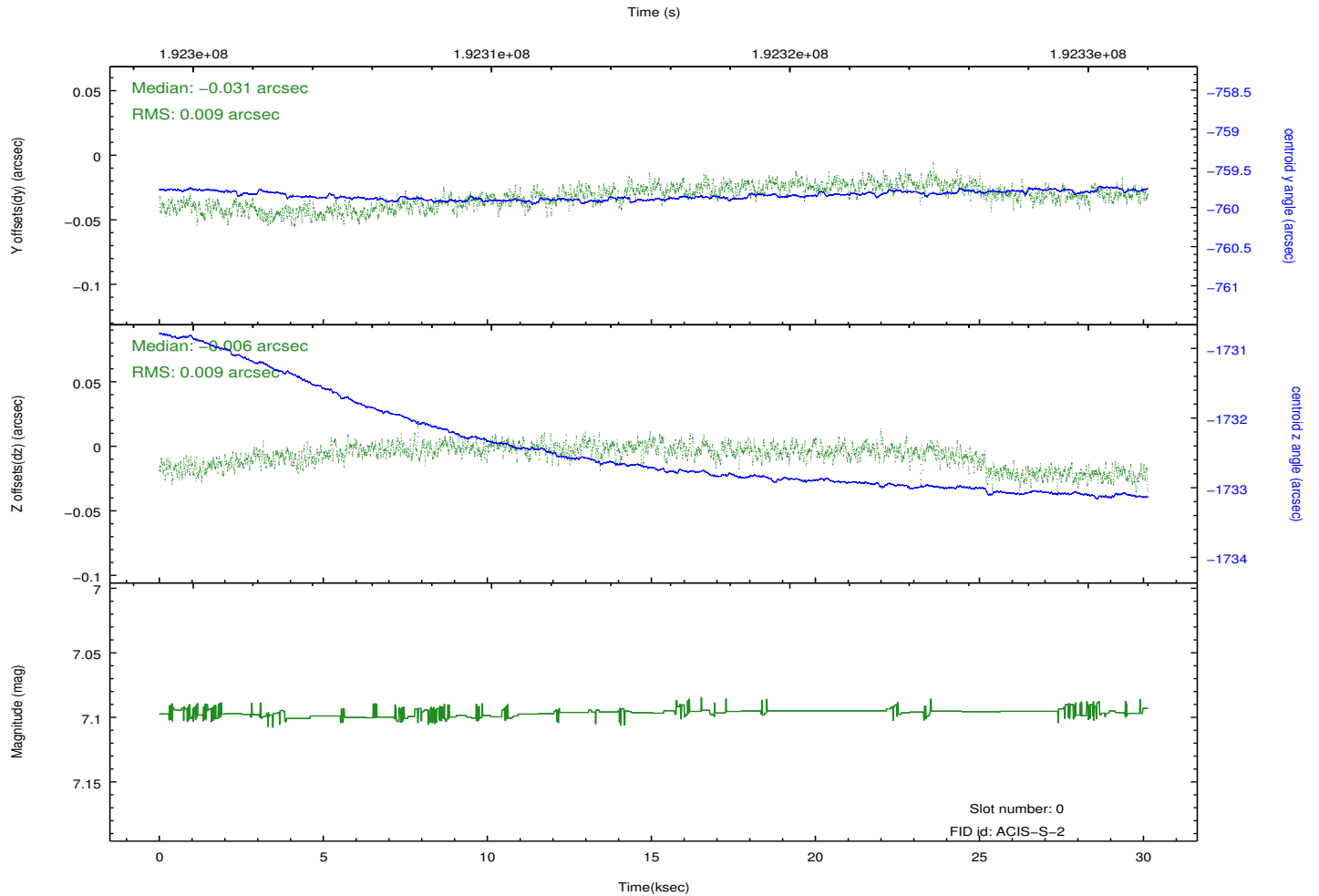
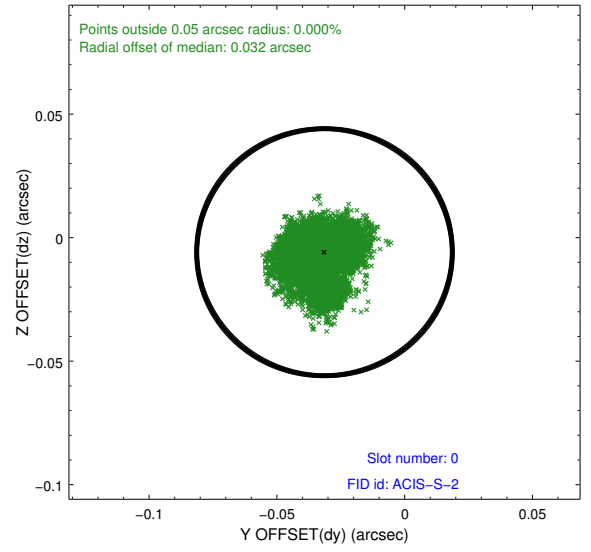
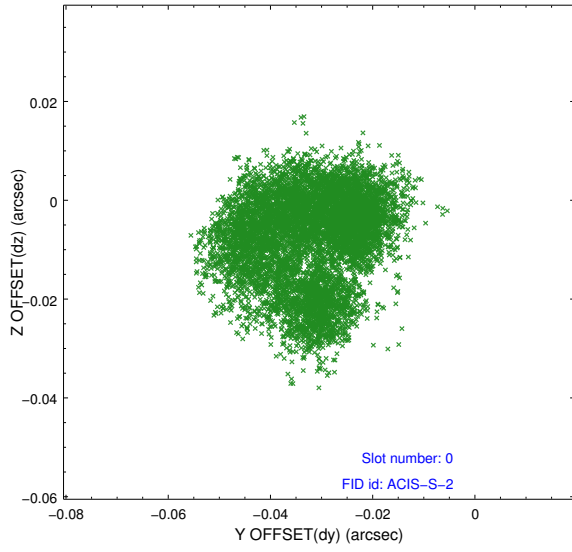


Time (s)

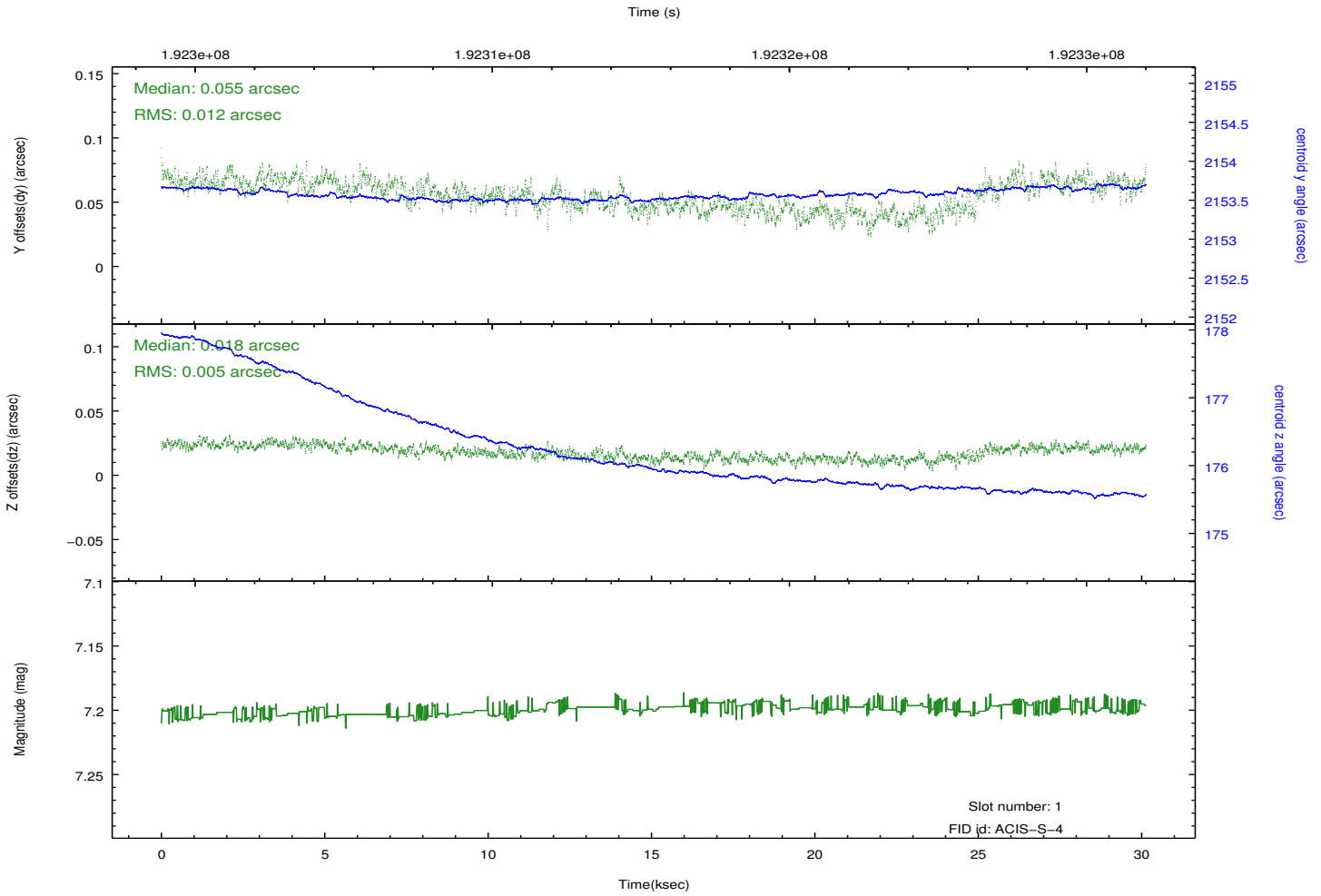
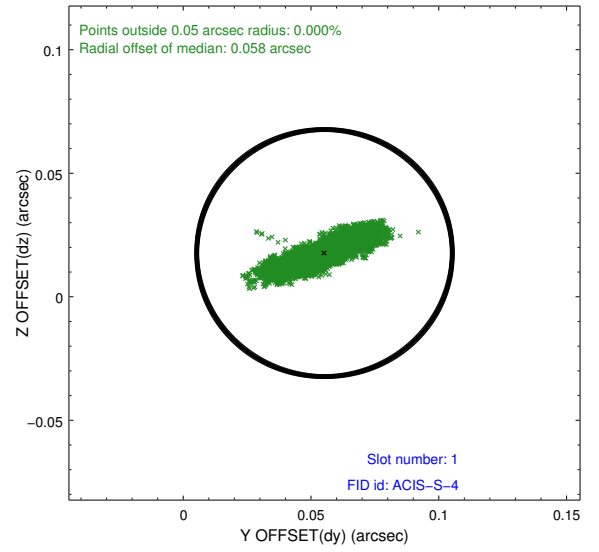
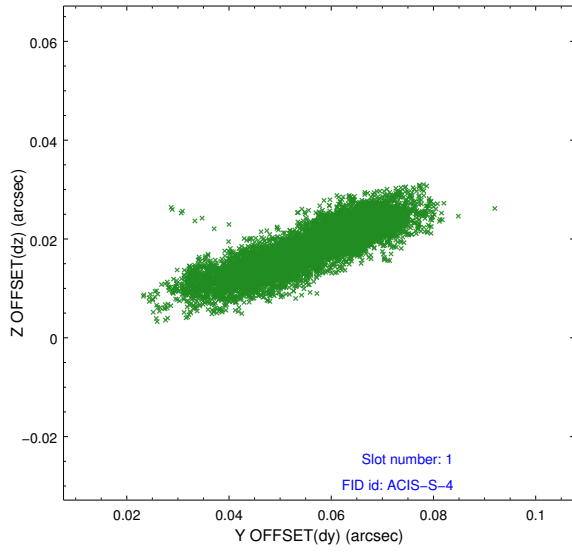


2.5 FID Slots

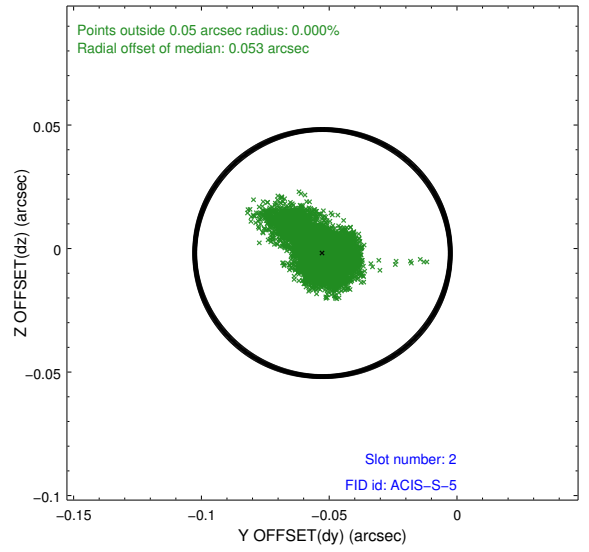
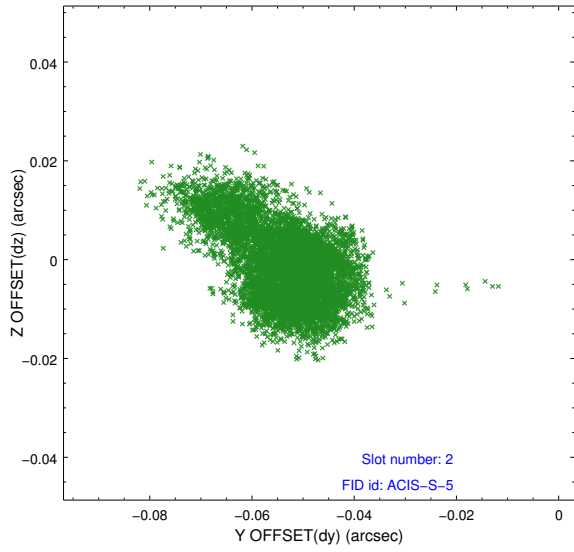
2.5.1 Slot 0



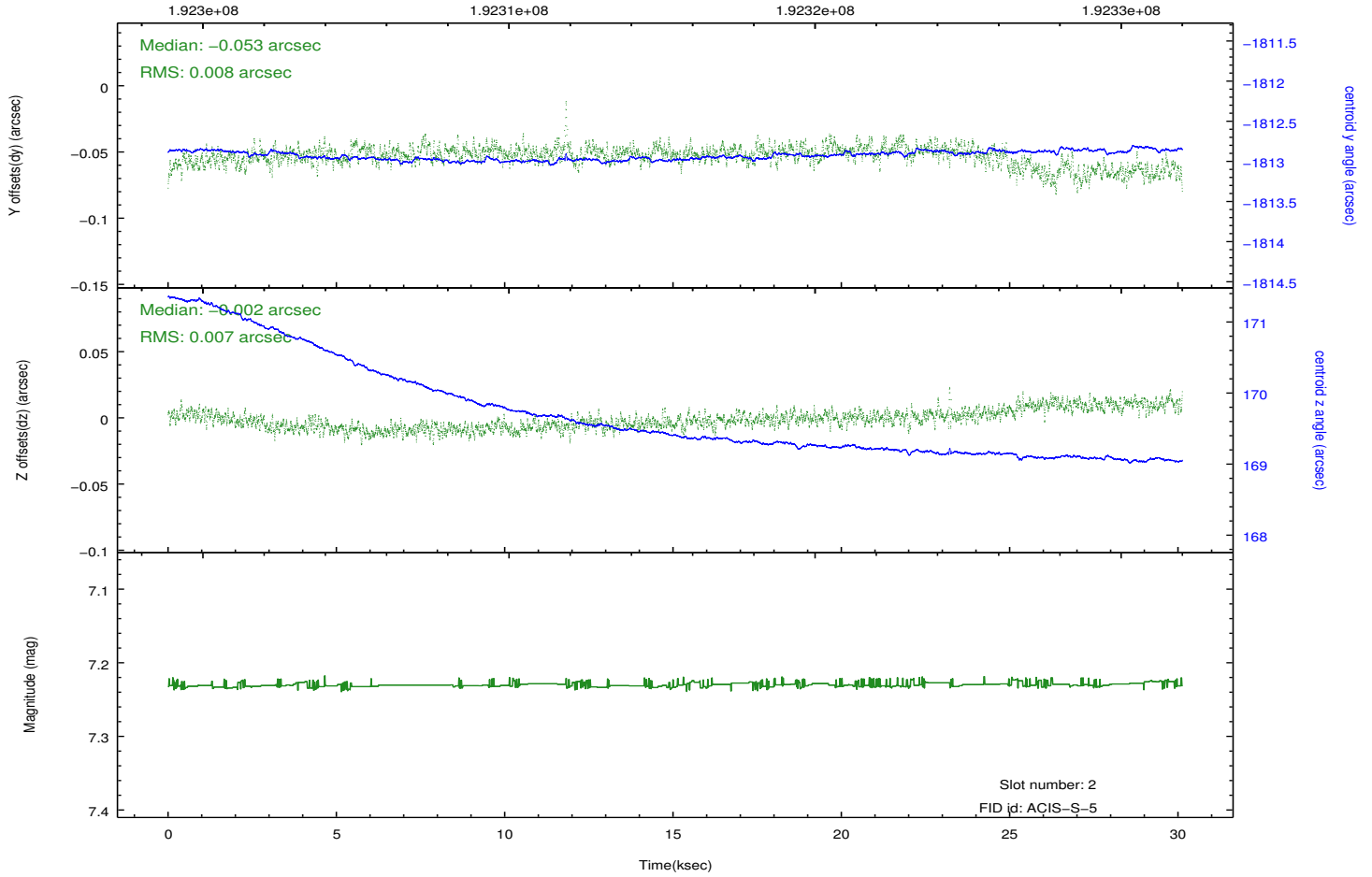
2.5.2 Slot 1



2.5.3 Slot 2



Time (s)



A Summary

A.1 Status

V&V Scientist	Jen Lauer
V&V Date (YYYY-MM-DD)	2012.12.11
V&V Edition	1
V&V Disposition and Status	OK
V&V Charge Time	29.756

A.2 Comments

Window constraint satisfied.