

V&V Reference Report

L2 ASCDS Version : 8.4.5

Observation 446 - L2 Version 5
Chandra X-Ray Center

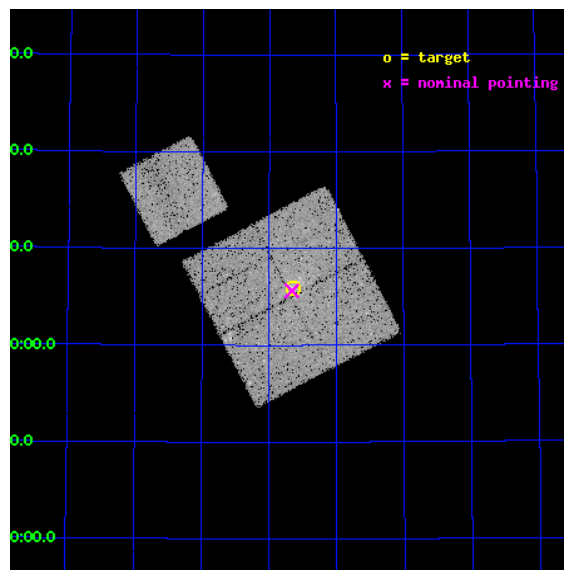
L2 Processing Date : Aug 25 2012

Contents

1	Front	2
2	OBI	3
2.1	OBI	3
2.1.1	Images	3
2.1.2	Bias	3
2.1.3	Parameters	4
2.1.4	Events	4
2.2	Compared Parameters	5
2.3	Aspect	6
2.4	Star Slots	9
2.4.1	Slot 3	9
2.4.2	Slot 4	10
2.4.3	Slot 5	11
2.4.4	Slot 6	12
2.4.5	Slot 7	13
2.5	FID Slots	14
2.5.1	Slot 0	14
2.5.2	Slot 1	15
2.5.3	Slot 2	16
A	Summary	17
A.1	Status	17
A.2	Comments	17

1 Front

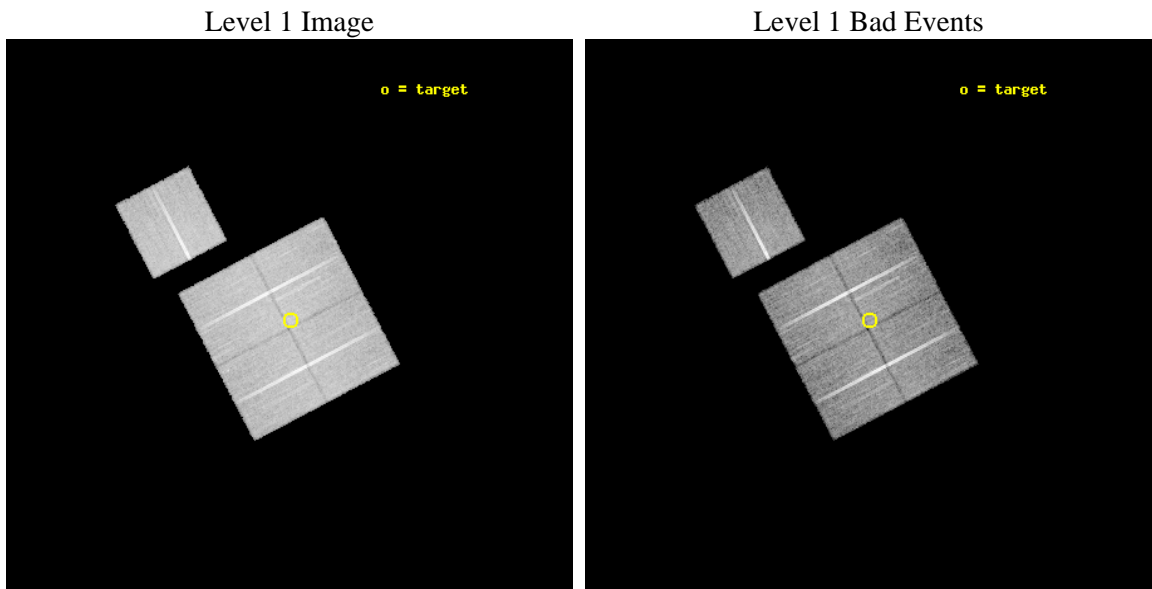
seq_num	200036	Sequence number
obs_id	446	Observation id
title	EXTENDED X-RAY EMISSION FROM MASSIVE STAR FORMATION REGIONS	Propos
observer	PROFESSOR EDWARD CHURCHWELL	Principal investigator
object	W3B	Source name
dtycle	0	
cycle	P	events from which exps? Prim/Second/Both
ra_targ	36.40875	Observer's specified target RA [deg]
dec_targ	62.097917	Observer's specified target Dec [deg]
ra_nom	36.415596059609	Nominal RA [deg]
dec_nom	62.094034921158	Nominal Dec [deg]
roll_nom	332.3825601225	Nominal Roll [deg]
revision	5	Processing version of data
ontime	20319.631097734	Sum of GTIs [s]
livetime	20062.331693762	Livetime [s]
ontime0	20319.631097734	Sum of GTIs [s]
ontime1	20319.631097734	Sum of GTIs [s]
ontime2	20319.631097734	Sum of GTIs [s]
ontime3	20319.631097734	Sum of GTIs [s]
ontime6	20319.631097734	Sum of GTIs [s]
l2events	71449	Number of level 2 events



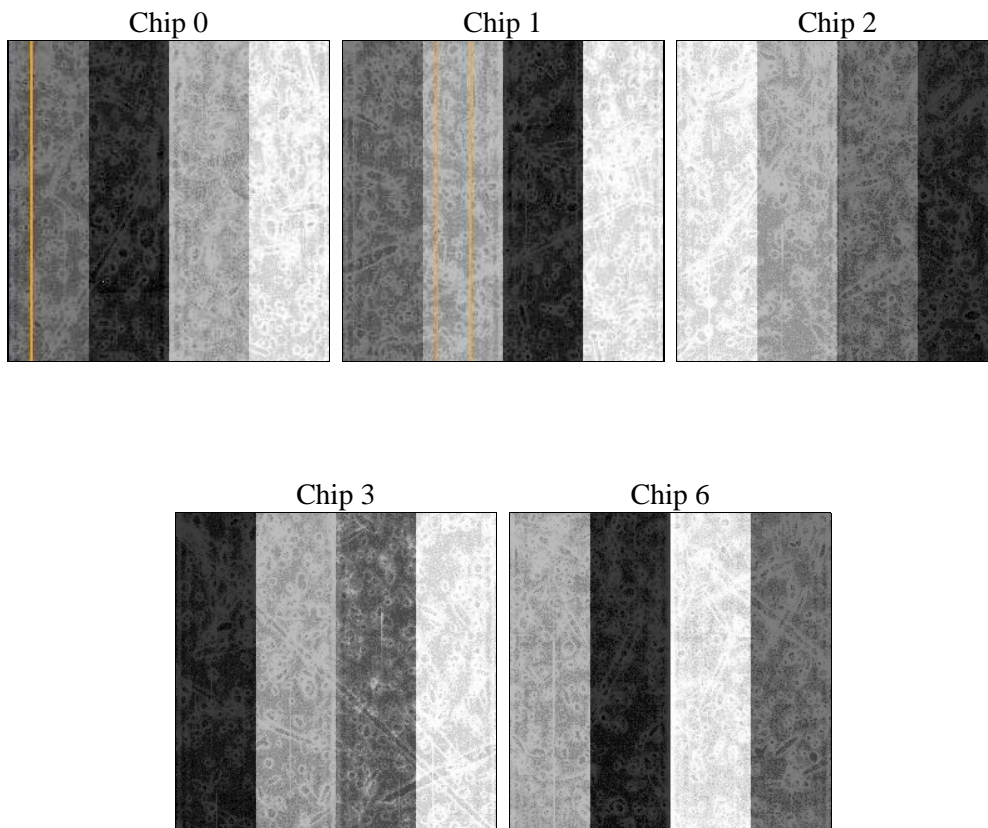
2 OBI

2.1 OBI

2.1.1 Images



2.1.2 Bias



2.1.3 Parameters

obi_num	1	Obi number	sched_exp_time	20000.000000	[s] Scheduled observation exposure time
ascdsver	8.4.5	Processing system revision	ontime	20319.631097734	Sum of GTIs [s]
caldbver	4.5.1.1	 	ontime0	20319.631097734	Sum of GTIs [s]
date	2012-08-25T03:29:49	Date and time of file creation	ontime1	20319.631097734	Sum of GTIs [s]
revision	5	Processing version of data	ontime2	20319.631097734	Sum of GTIs [s]
			ontime3	20319.631097734	Sum of GTIs [s]
			ontime6	20319.631097734	Sum of GTIs [s]
			l1events	725886	Number of level 1 events

2.1.4 Events

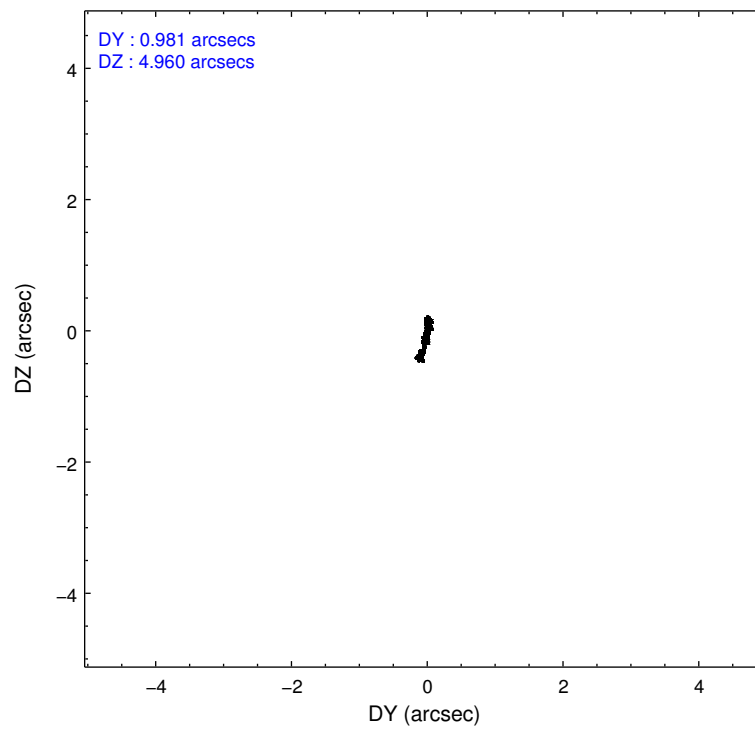
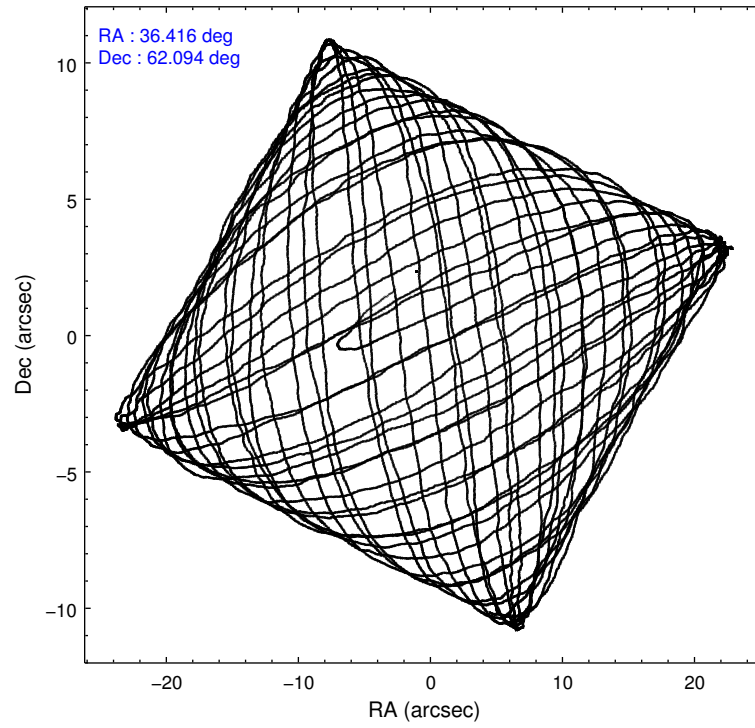
	ccd 0	ccd 1	ccd 2	ccd 3	ccd 6
level 1 events	141464	136231	152653	145288	150250
rejected events	124163	118584	136395	127911	134951
rejected %	87%	87%	89%	88%	89%

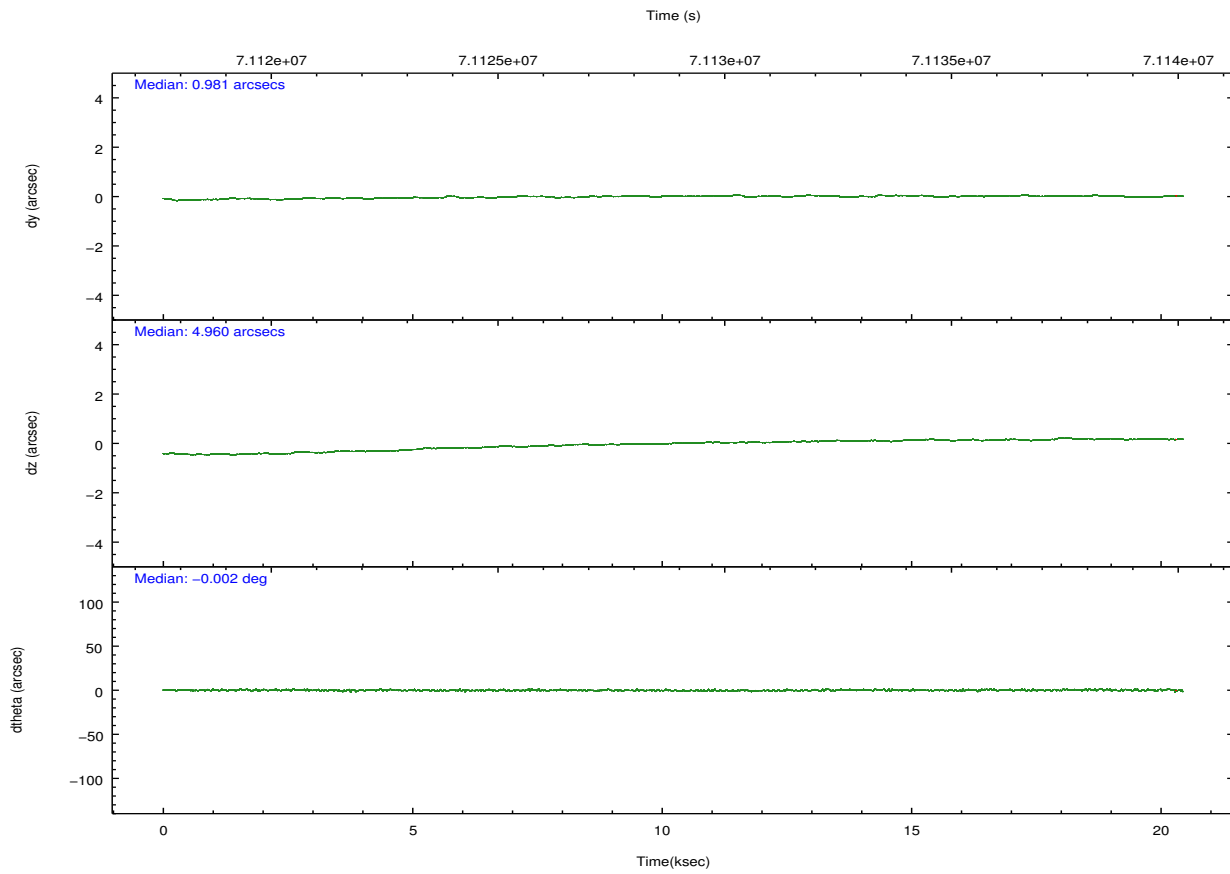
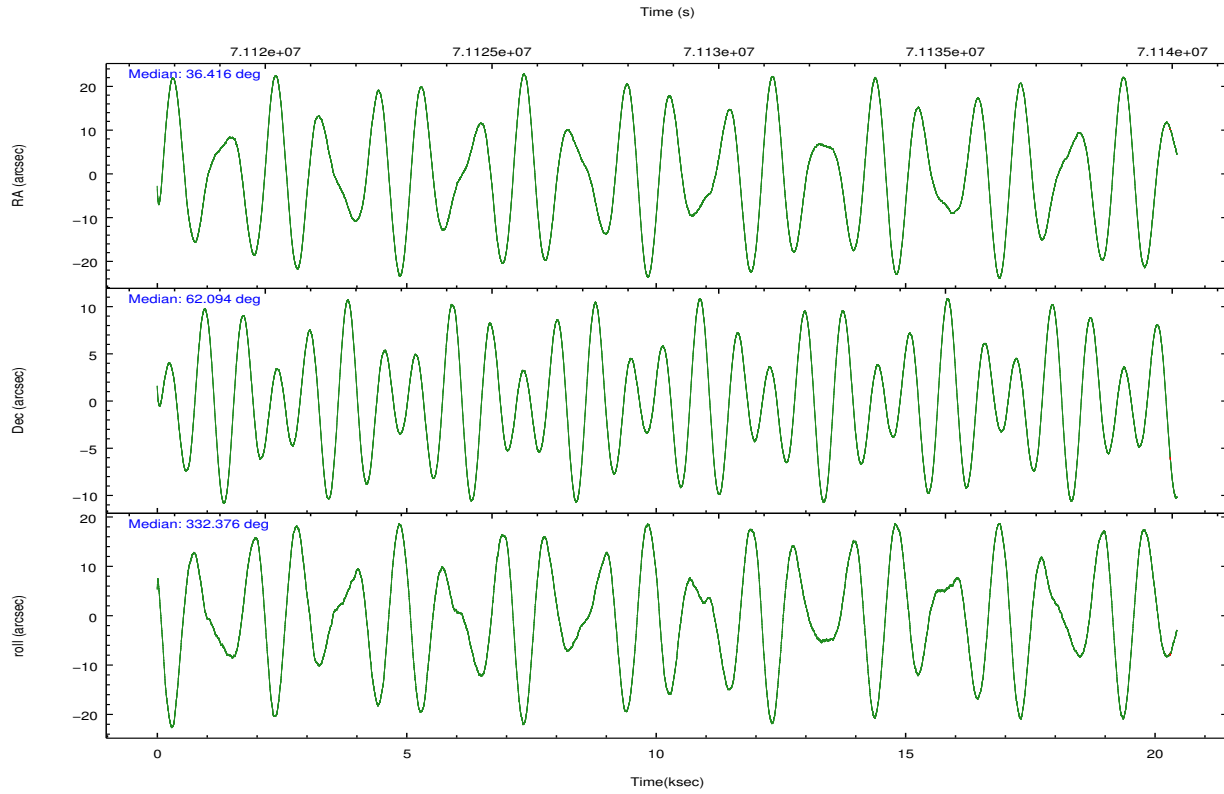
	ccd 0	ccd 1	ccd 2	ccd 3	ccd 6
grade 0 events	7870	7612	7366	8293	6327
	5%	5%	4%	5%	4%
grade 1 events	73	72	70	84	69
	0%	0%	0%	0%	0%
grade 2 events	3486	3409	3240	3187	2931
	2%	2%	2%	2%	1%
grade 3 events	1674	1870	1502	1611	1599
	1%	1%	0%	1%	1%
grade 4 events	1559	1714	1588	1605	1556
	1%	1%	1%	1%	1%
grade 5 events	4588	4821	4366	4852	5378
	3%	3%	2%	3%	3%
grade 6 events	2720	3049	2567	2693	2895
	1%	2%	1%	1%	1%
grade 7 events	119494	113684	131954	122963	129495
	84%	83%	86%	84%	86%

2.2 Compared Parameters

Parameter	Planned	Actual	Parameter	Planned	Actual
Instrument	ACIS	ACIS	Obspar format version number	7	7
Detector	ACIS-01236	ACIS-01236	Obspar file type	PREDICTED	ACTUAL
Grating	NONE	NONE	Obspar update status	NONE	UPDATED
Data mode	FAINT	FAINT	Number of optional ACIS chips dropped	0	0
Observation mode	POINTING	POINTING	On-chip summing requested	N	N
[deg] Pointing RA	36.356600	36.41559605960881	Subarray requested	NONE	NONE
[deg] Pointing Dec	62.093070	62.09403492115769	Alternating exposures requested	N	N
[deg] Pointing Roll	332.225038	332.3825601225008	[s] Primary exposure time	0.000000	3.2
[mm] SIM focus pos	-0.782348	-0.7809083437167272			
[mm] SIM defocus	0	0.001439871863259334			
[mm] SIM translation stage pos	-233.592463	-233.5874344608287			
[mm] SIM translation stage offset	0	-0.005018542100998502			
[s] Observation start time (MET)	71118993.184000	71117838.25752901			
Observation start date	2000-04-03T03:15:29	2000-04-03T02:57:18			
[s] Observation end time (MET)	71138993.184000	71139899.845837			
Observation end date	2000-04-03T08:48:49	2000-04-03T09:04:59			
Read mode	TIMED	TIMED			

2.3 Aspect





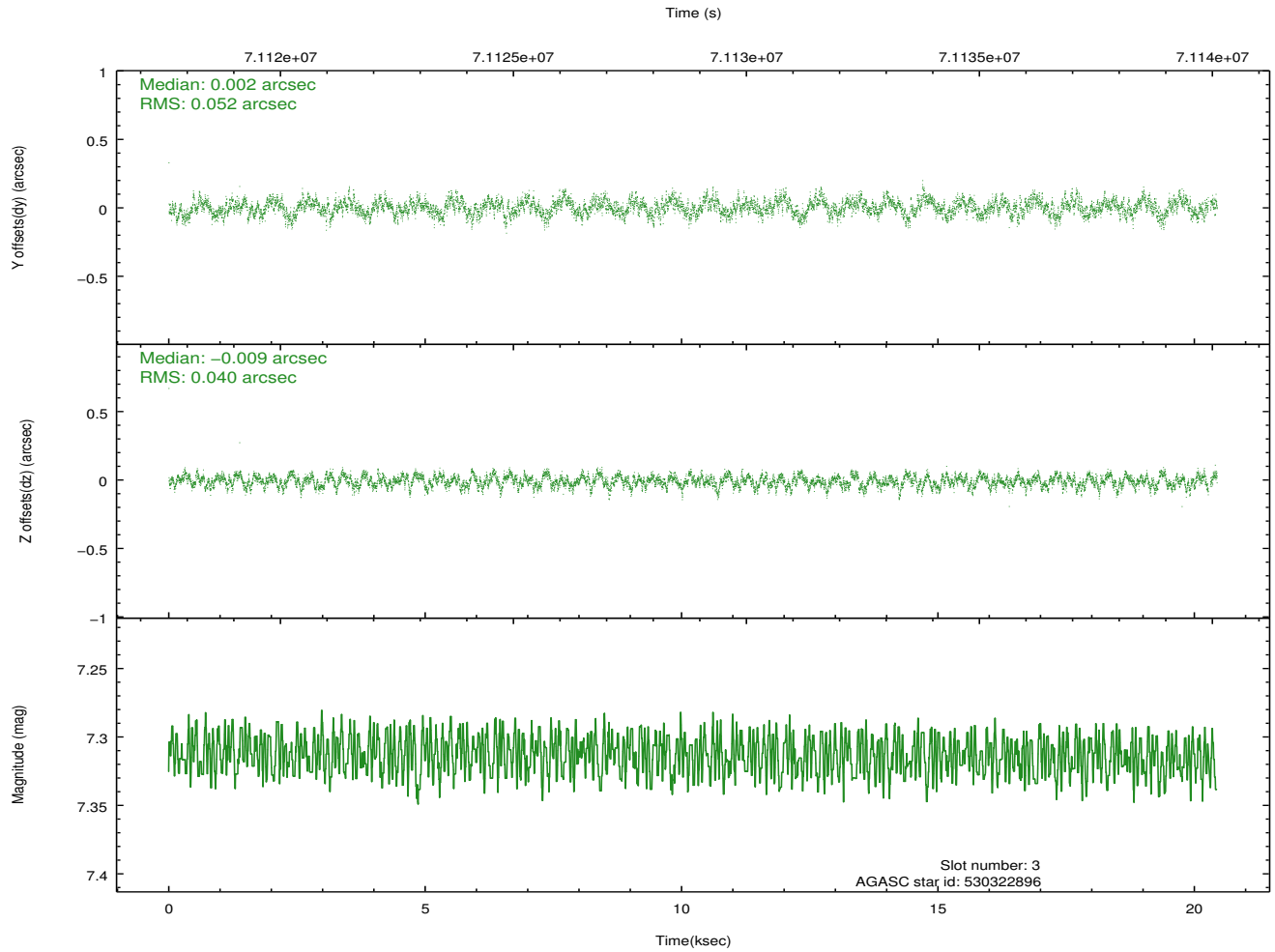
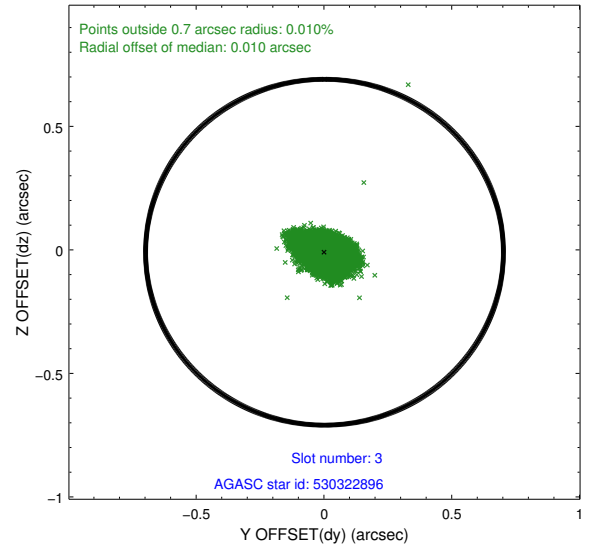
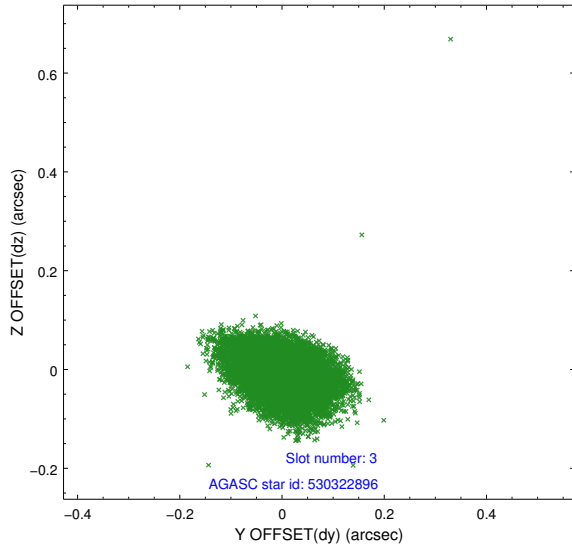
Slot Statistics

slot	status	id	mag	n_pts	med_dy	med_dz	dr1	dr2	ra	dec	mean_y	mean_z
0	FID	ACIS-I-2	7.15	4977	-0.027	-0.028	0.009	0.017	0.000000	0.000000	-755.31	-834.63
1	FID	ACIS-I-4	7.19	4977	-0.042	0.032	0.008	0.015	0.000000	0.000000	2158.65	1071.51
2	FID	ACIS-I-5	7.23	4978	-0.032	0.065	0.010	0.016	0.000000	0.000000	-1808.91	1069.60
3	GUIDE	530322896	7.31	9953	0.002	-0.009	0.069	0.113	36.417213	61.549666	1003.07	-1682.56
4	GUIDE	530852736	7.83	9950	-0.057	-0.026	0.070	0.112	37.086329	62.219010	868.16	977.50
5	GUIDE	530859408	9.62	9945	0.089	-0.063	0.098	0.161	37.009148	62.113801	934.23	582.81
6	GUIDE	530850000	9.82	9875	-0.106	0.039	0.123	0.202	36.118201	62.689282	-1349.82	1716.01
7	GUIDE	530861360	9.77	9901	0.060	0.052	0.201	0.295	35.345736	62.078254	-1489.73	-829.66

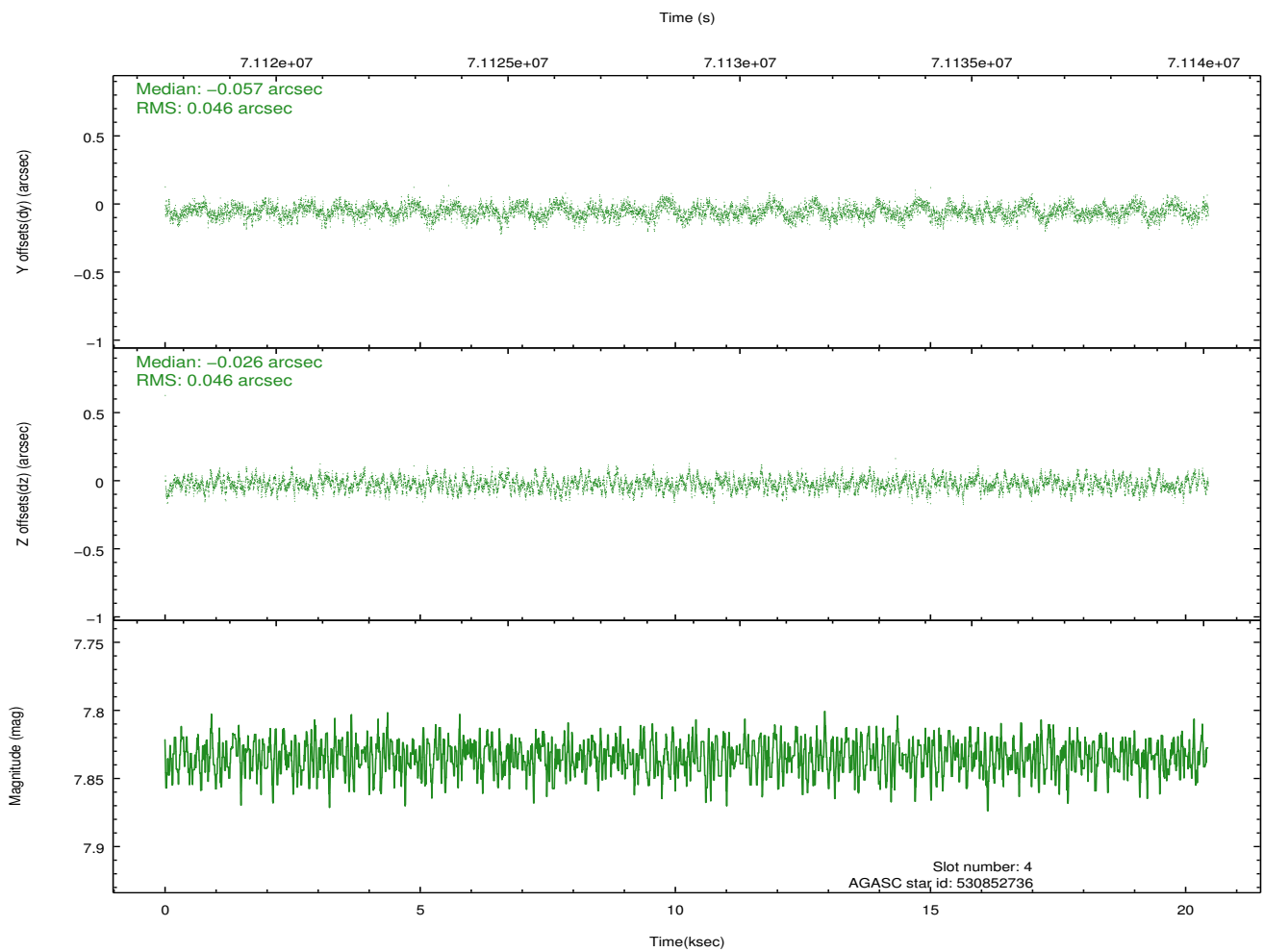
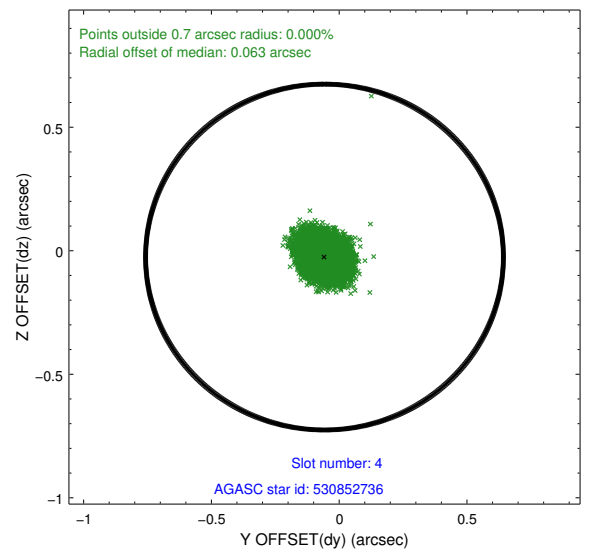
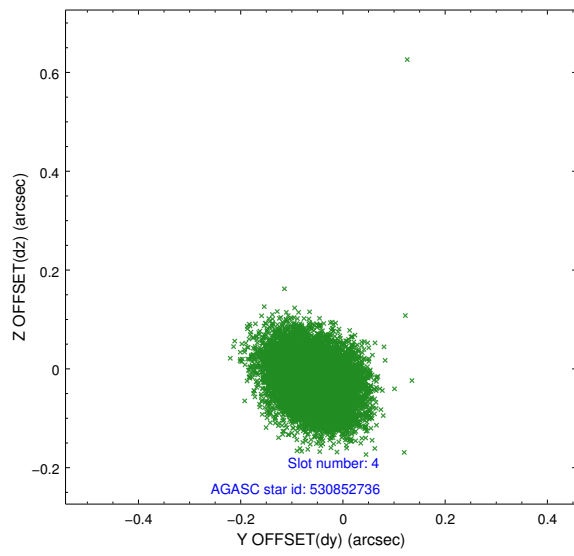
∞

2.4 Star Slots

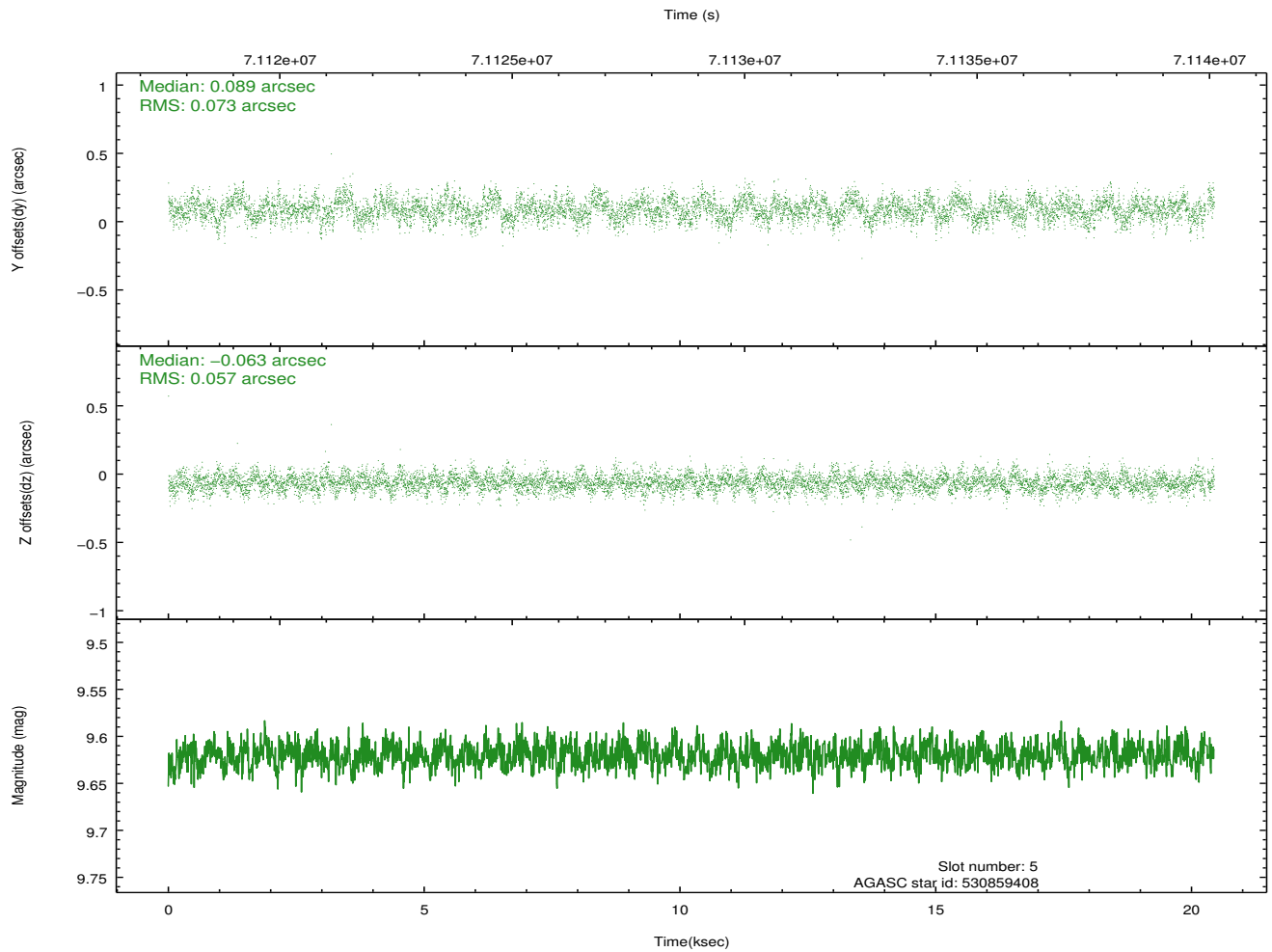
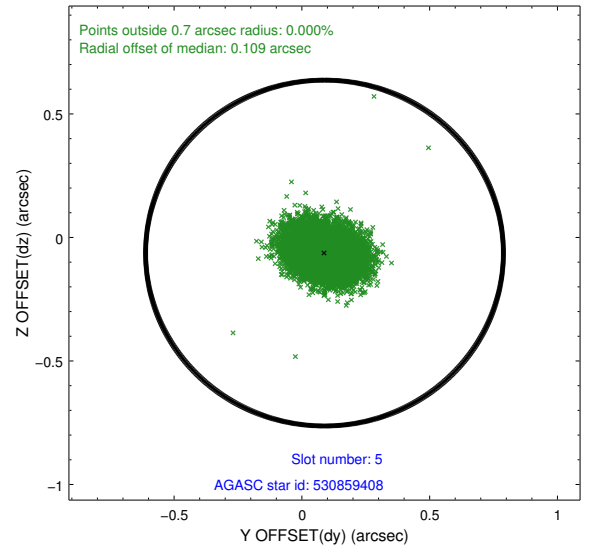
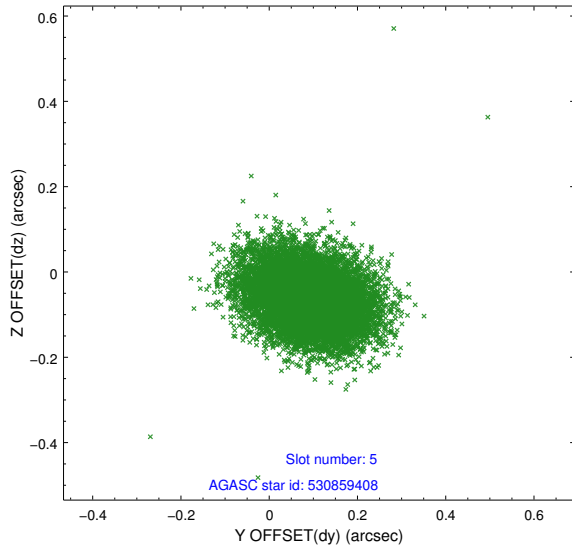
2.4.1 Slot 3



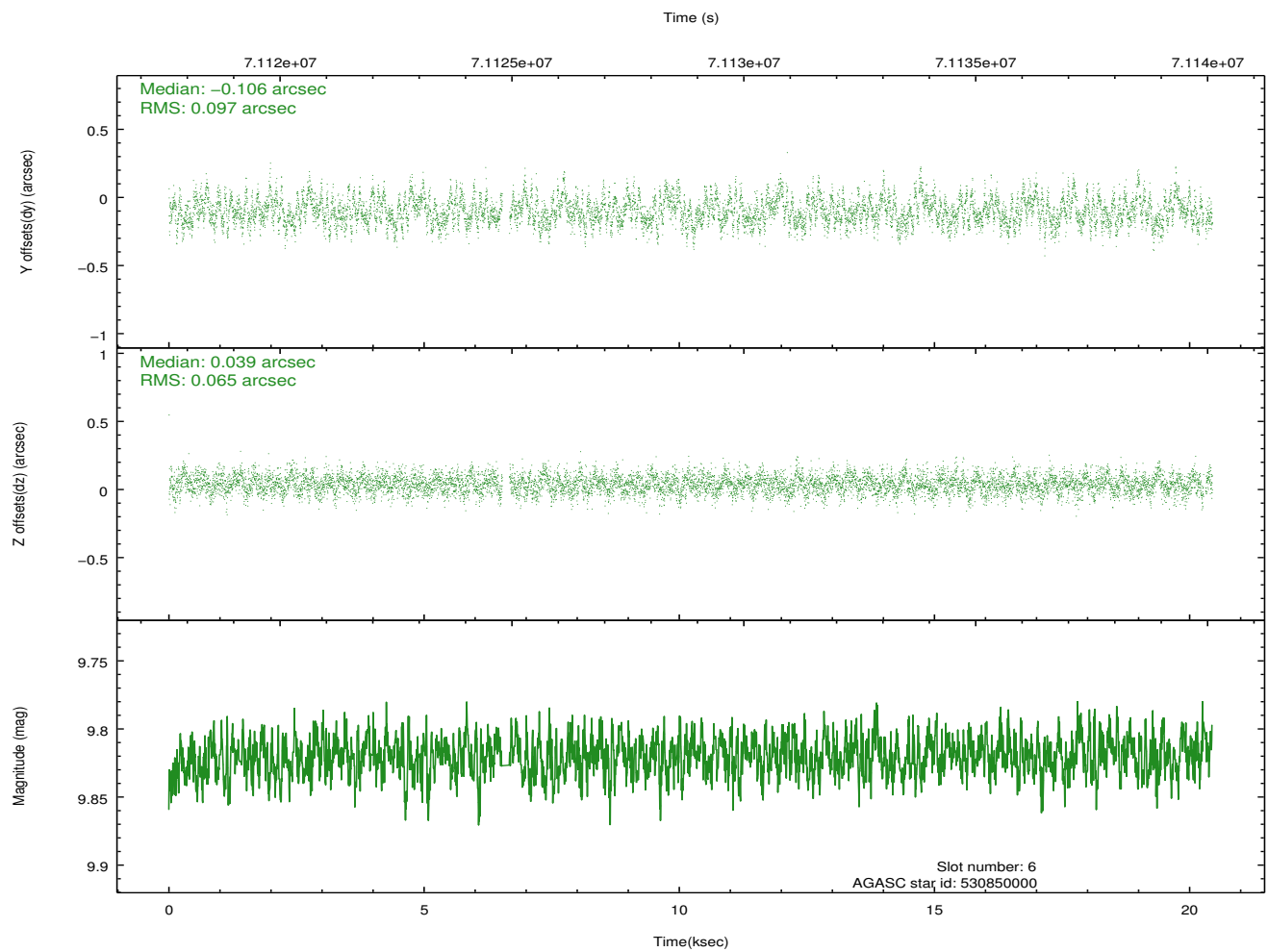
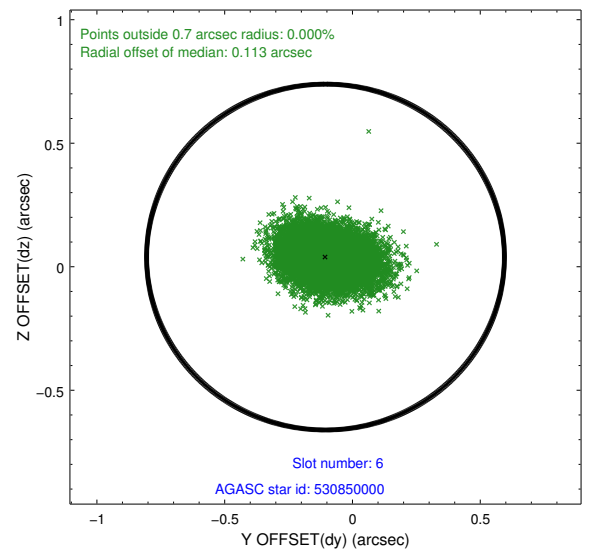
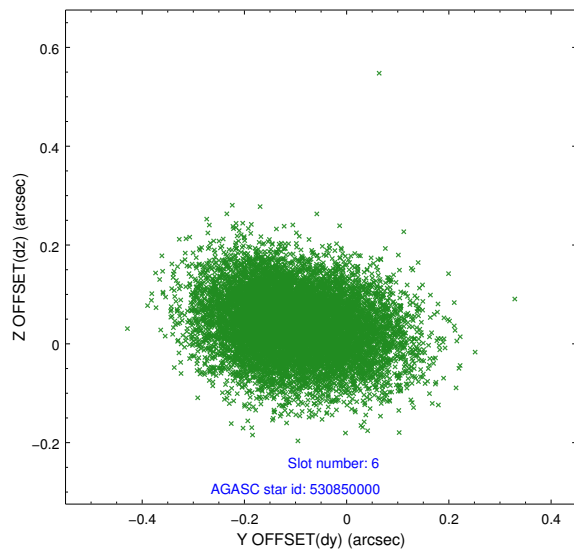
2.4.2 Slot 4



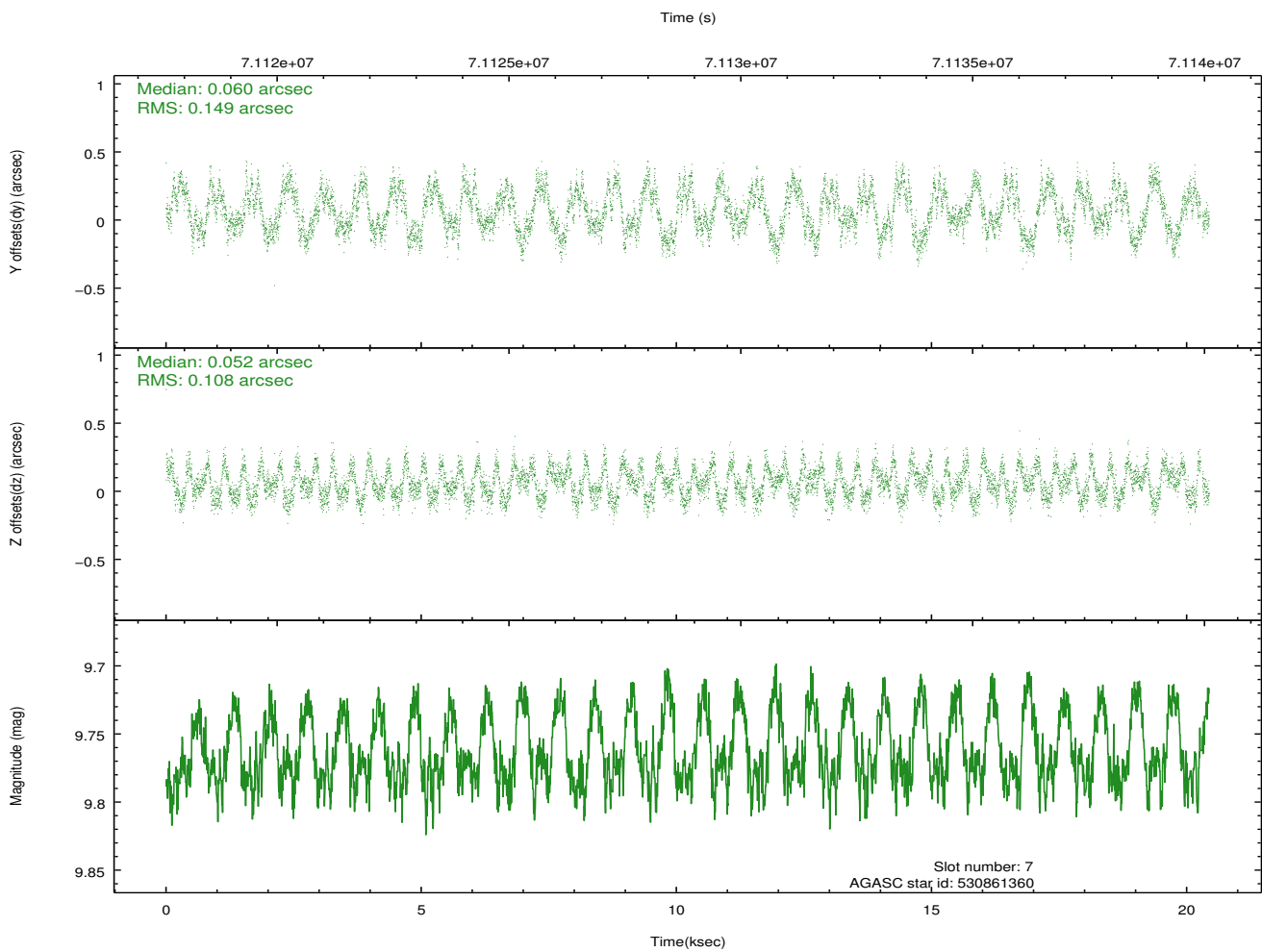
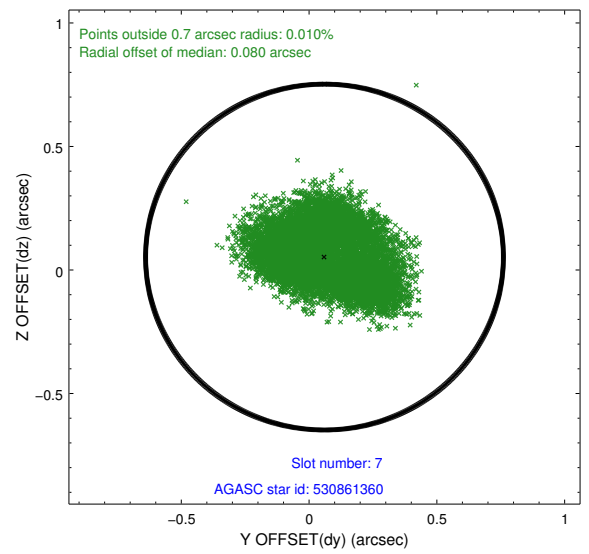
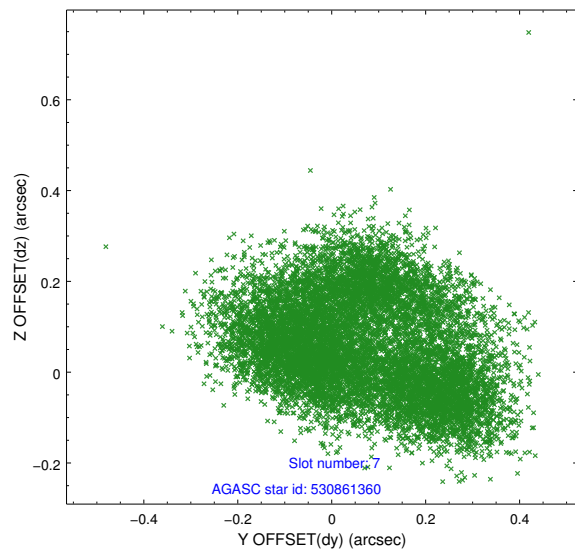
2.4.3 Slot 5



2.4.4 Slot 6

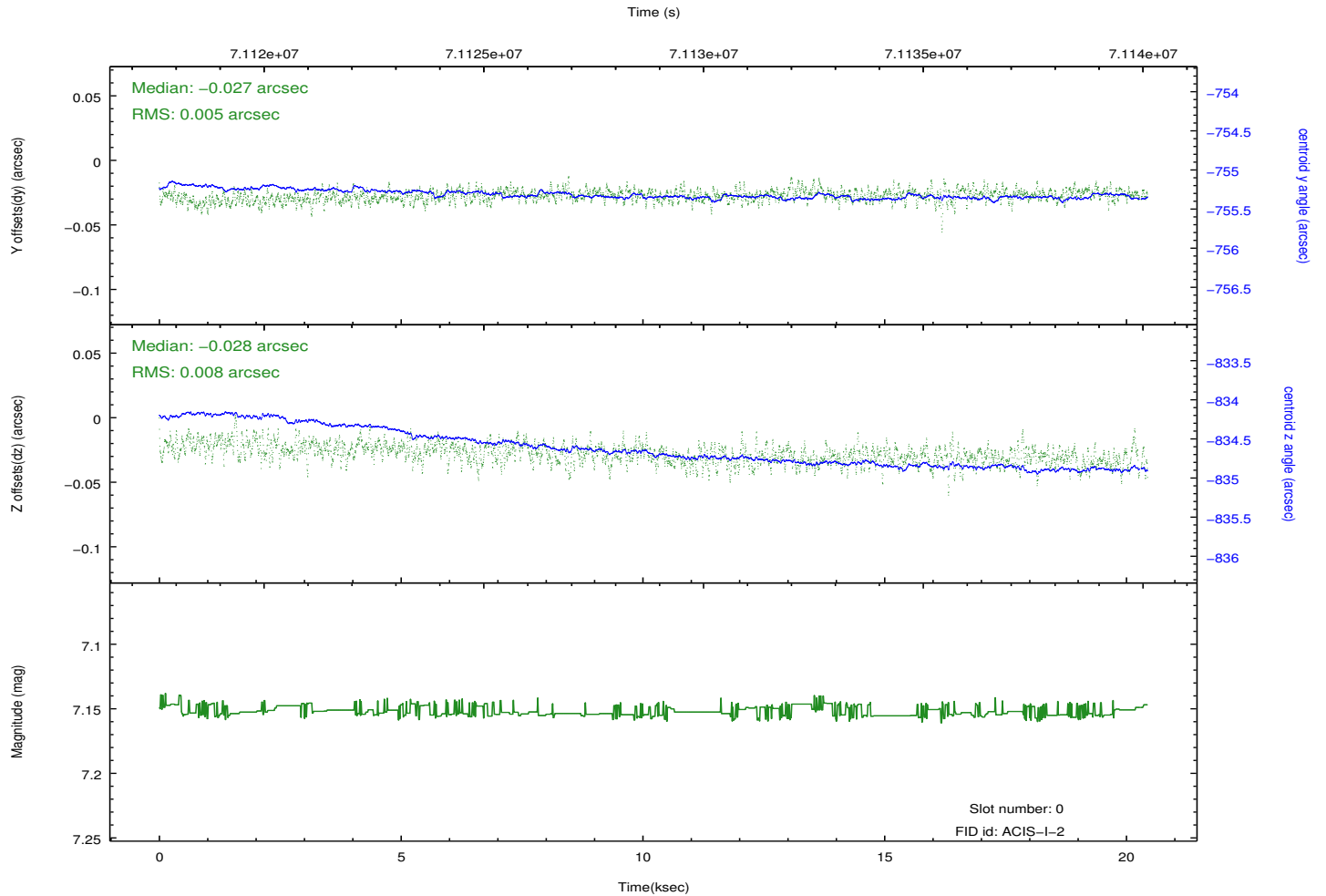
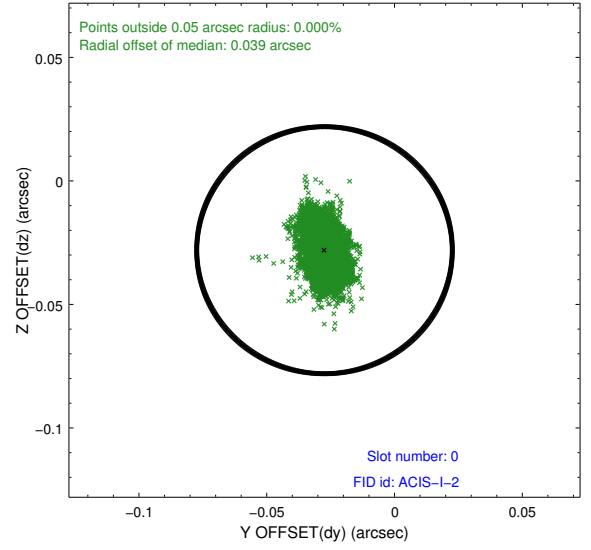
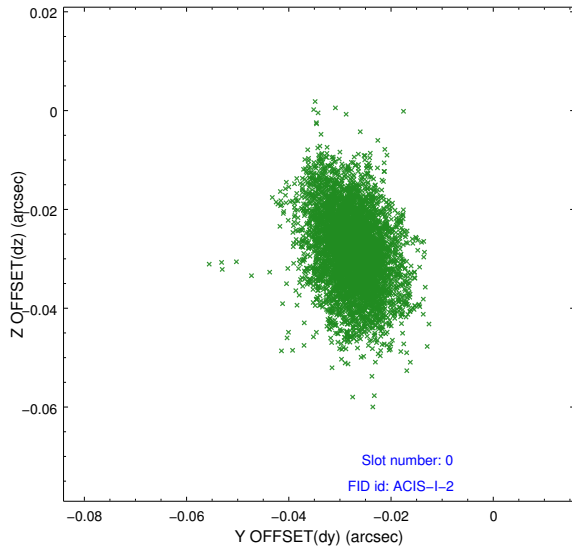


2.4.5 Slot 7

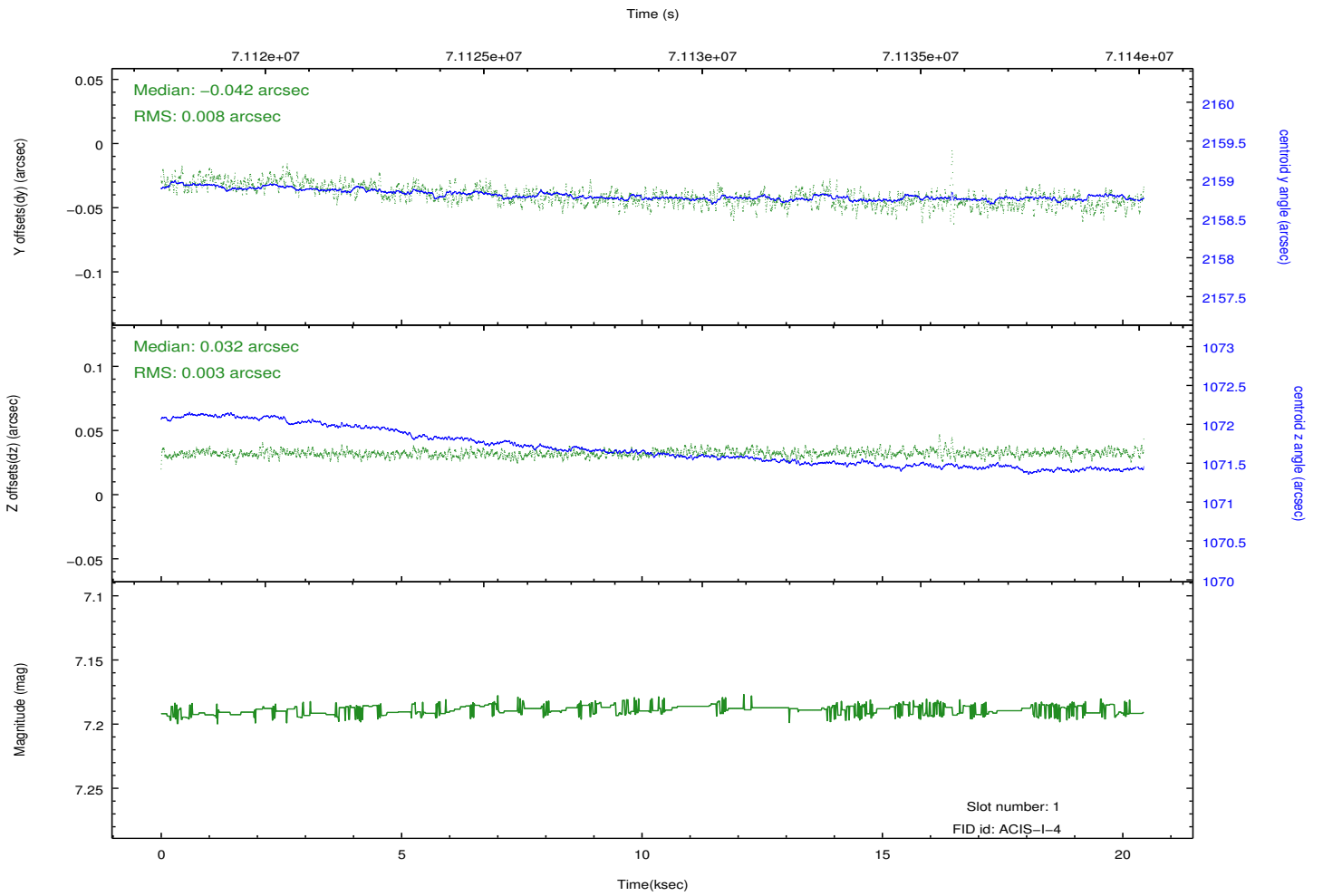
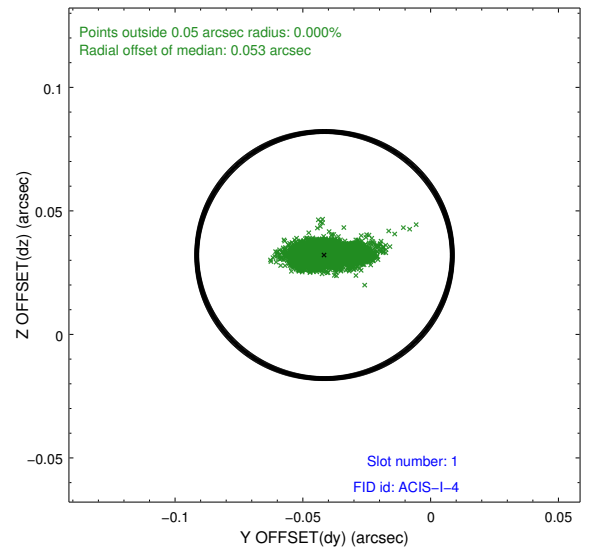
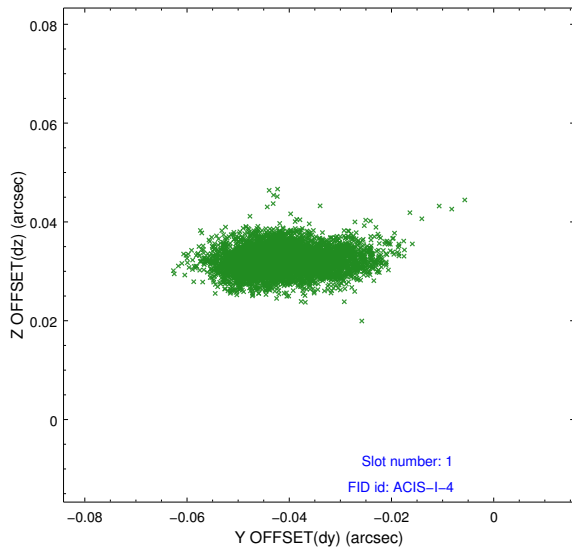


2.5 FID Slots

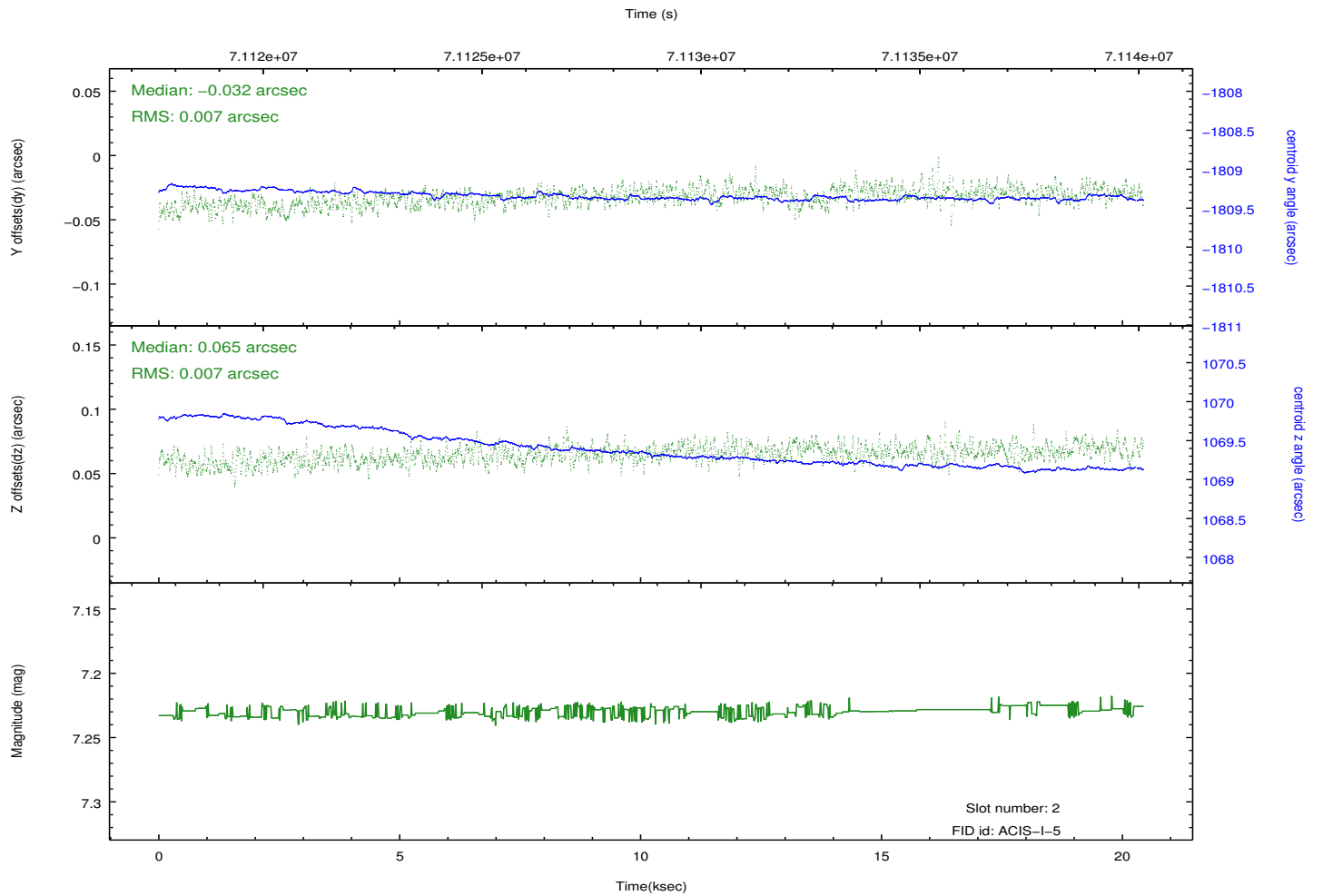
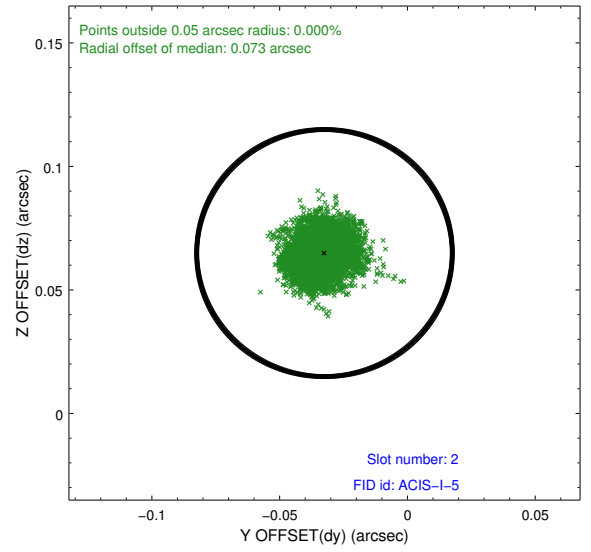
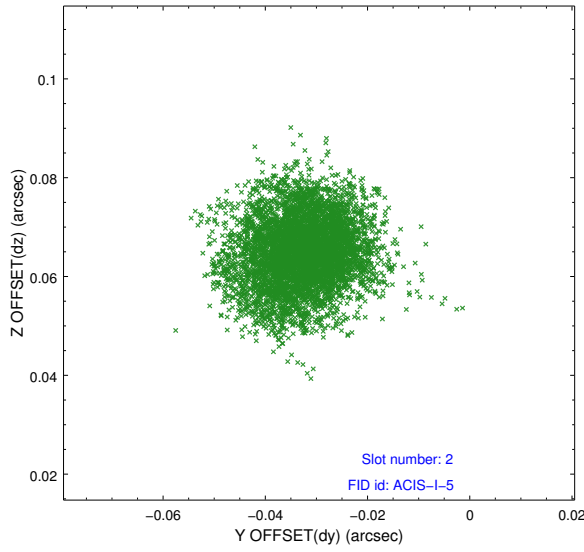
2.5.1 Slot 0



2.5.2 Slot 1



2.5.3 Slot 2



A Summary

A.1 Status

V&V Scientist	Jen Lauer
V&V Date (YYYY-MM-DD)	2012.08.28
V&V Edition	1
V&V Disposition and Status	OK
V&V Charge Time	20.316

A.2 Comments