

V&V Reference Report

L2 ASCDS Version : 8.4.5

Observation 4486 - L2 Version 3
Chandra X-Ray Center

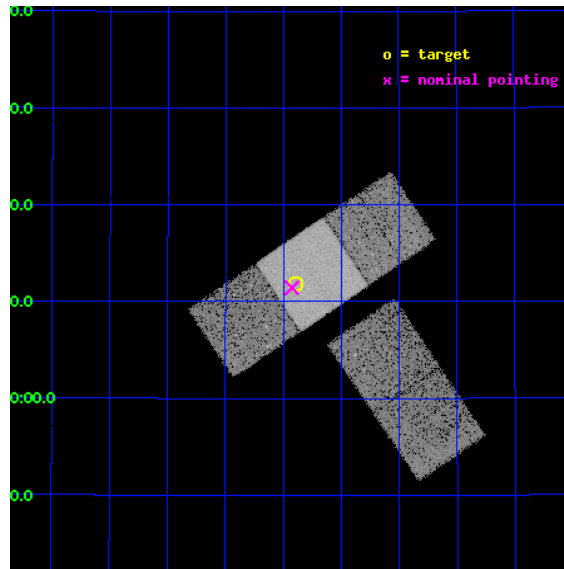
L2 Processing Date : Nov 9 2012

Contents

1	Front	2
2	OBI	3
2.1	OBI	3
2.1.1	Images	3
2.1.2	Bias	3
2.1.3	Parameters	4
2.1.4	Events	4
2.2	Compared Parameters	5
2.3	Aspect	6
2.4	Star Slots	9
2.4.1	Slot 3	9
2.4.2	Slot 4	10
2.4.3	Slot 5	11
2.4.4	Slot 6	12
2.4.5	Slot 7	13
2.5	FID Slots	14
2.5.1	Slot 0	14
2.5.2	Slot 1	15
2.5.3	Slot 2	16
A	Summary	17
A.1	Status	17
A.2	Comments	17

1 Front

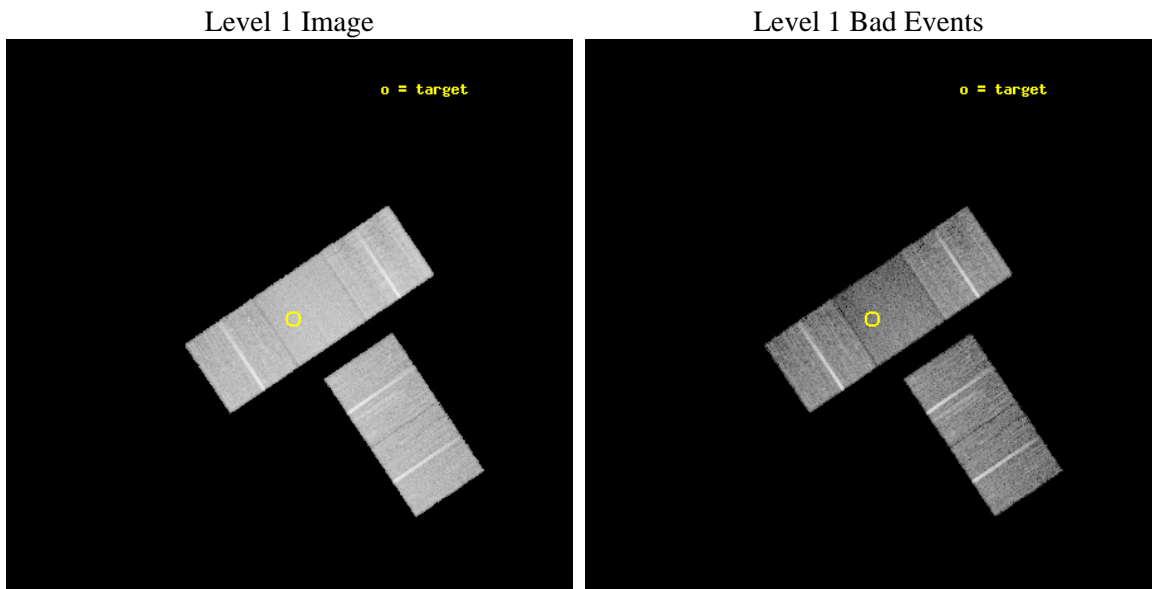
seq_num	200255	Sequence number
obs_id	4486	Observation id
title	Do Carbon-rich Wolf-Rayet Stars Emit X-rays ?	Proposal title
observer	Dr Svetozar ZHEKOV	Principal investigator
object	WR 135	Source name
dtycycle	0	
cycle	P	events from which exps? Prim/Second/Both
ra_targ	302.972917	Observer's specified target RA [deg]
dec_targ	36.197361	Observer's specified target Dec [deg]
ra_nom	302.9815257088	Nominal RA [deg]
dec_nom	36.190630868002	Nominal Dec [deg]
roll_nom	326.0007336033	Nominal Roll [deg]
revision	3	Processing version of data
ontime	20174.799961179	Sum of GTIs [s]
livetime	19911.201347215	Livetime [s]
ontime1	20174.799961179	Sum of GTIs [s]
ontime3	20174.799961179	Sum of GTIs [s]
ontime6	20171.659000933	Sum of GTIs [s]
ontime7	20174.799961179	Sum of GTIs [s]
ontime8	20174.799961179	Sum of GTIs [s]
l2events	96861	Number of level 2 events



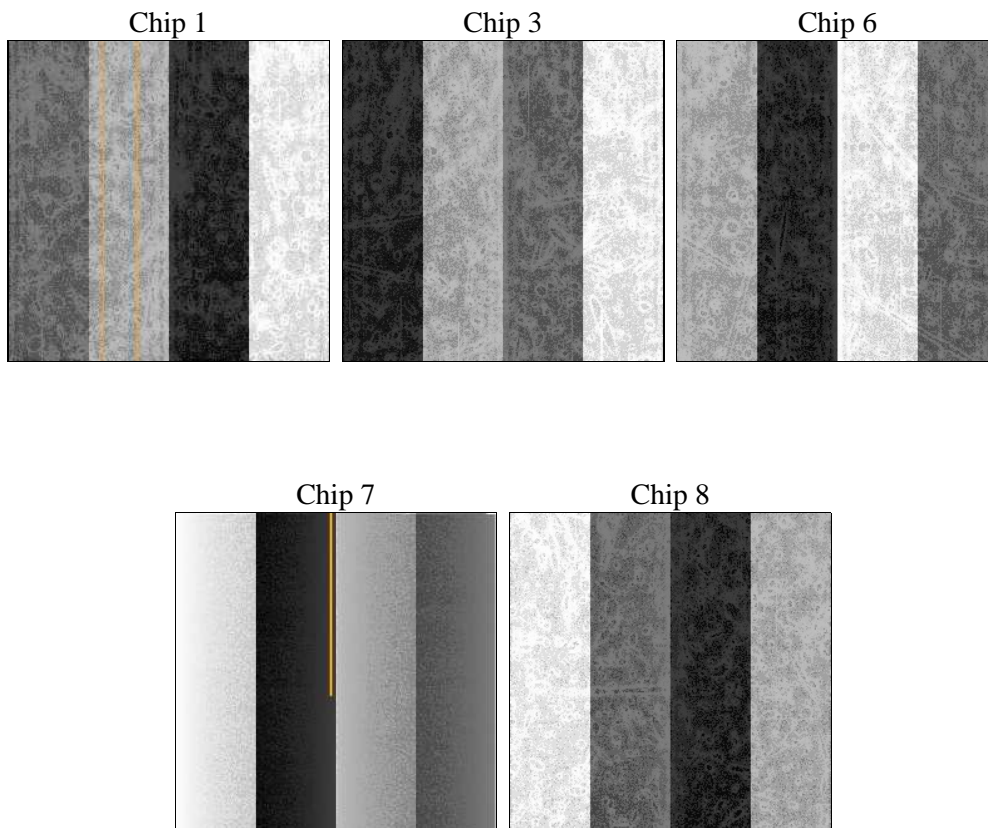
2 OBI

2.1 OBI

2.1.1 Images



2.1.2 Bias



2.1.3 Parameters

obi_num	2	Obi number	sched_exp_time	20000.000000	[s] Scheduled observation exposure time
ascdsver	8.4.5	Processing system revision	ontime	20174.799961179	Sum of GTIs [s]
caldbver	4.5.2	 	ontime1	20174.799961179	Sum of GTIs [s]
date	2012-11-09T08:13:34	Date and time of file creation	ontime3	20174.799961179	Sum of GTIs [s]
revision	3	Processing version of data	ontime6	20171.659000933	Sum of GTIs [s]
			ontime7	20174.799961179	Sum of GTIs [s]
			ontime8	20174.799961179	Sum of GTIs [s]
			l1events	560563	Number of level 1 events

2.1.4 Events

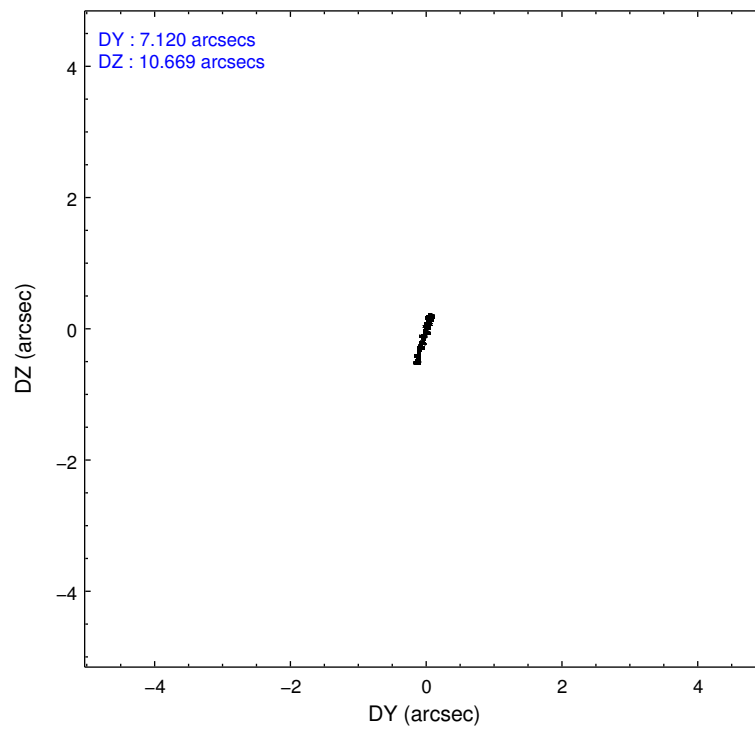
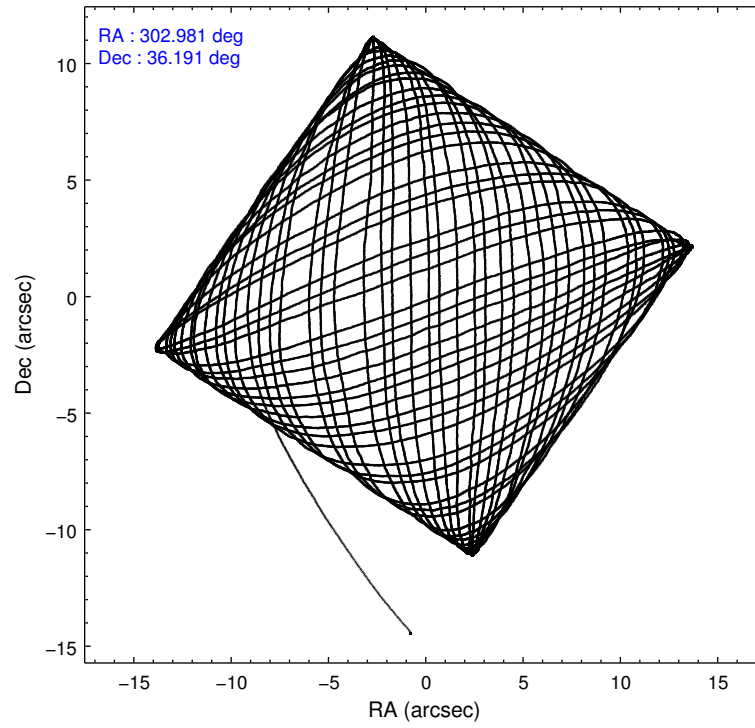
	ccd 1	ccd 3	ccd 6	ccd 7	ccd 8
level 1 events	96250	103022	108820	119446	133025
rejected events	83938	92322	96367	64376	102219
rejected %	87%	89%	88%	53%	76%

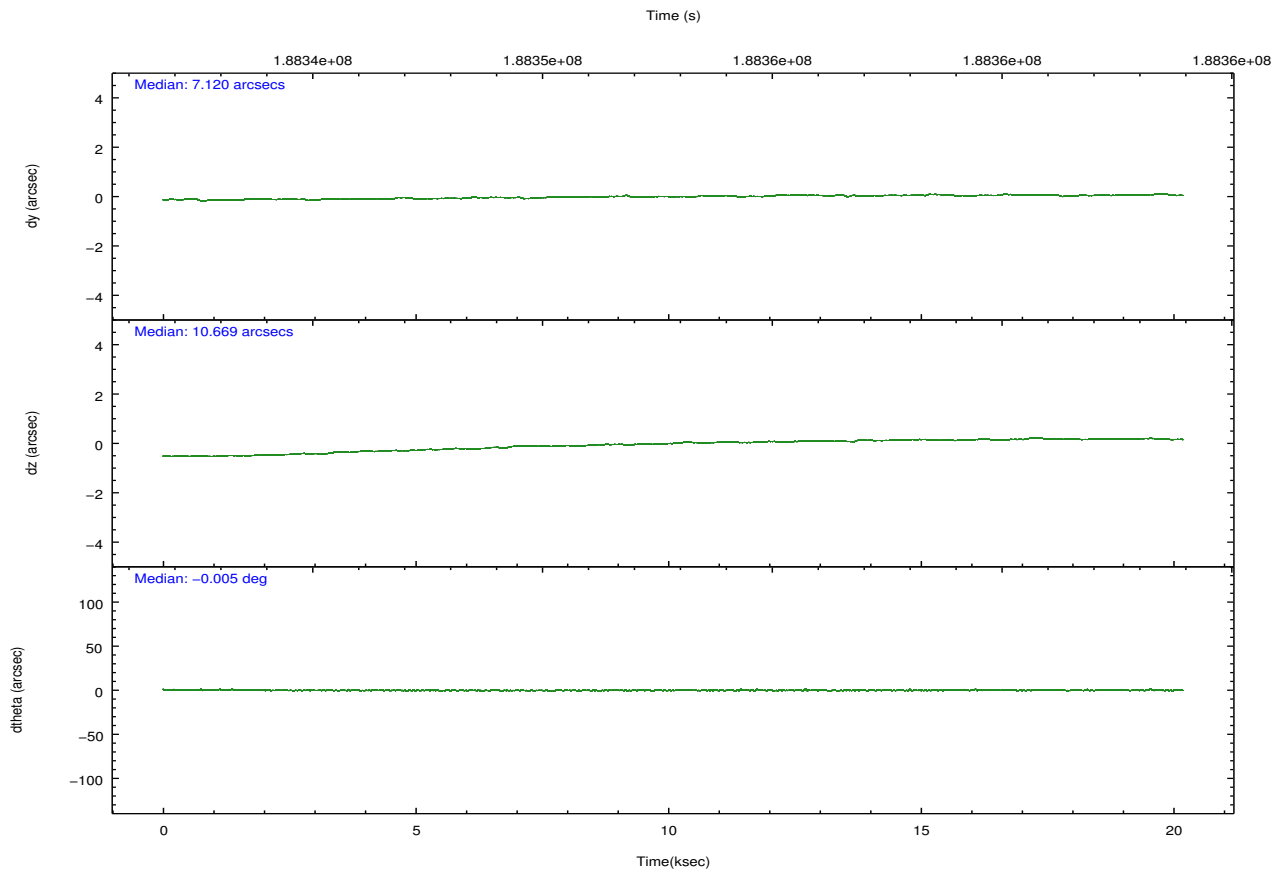
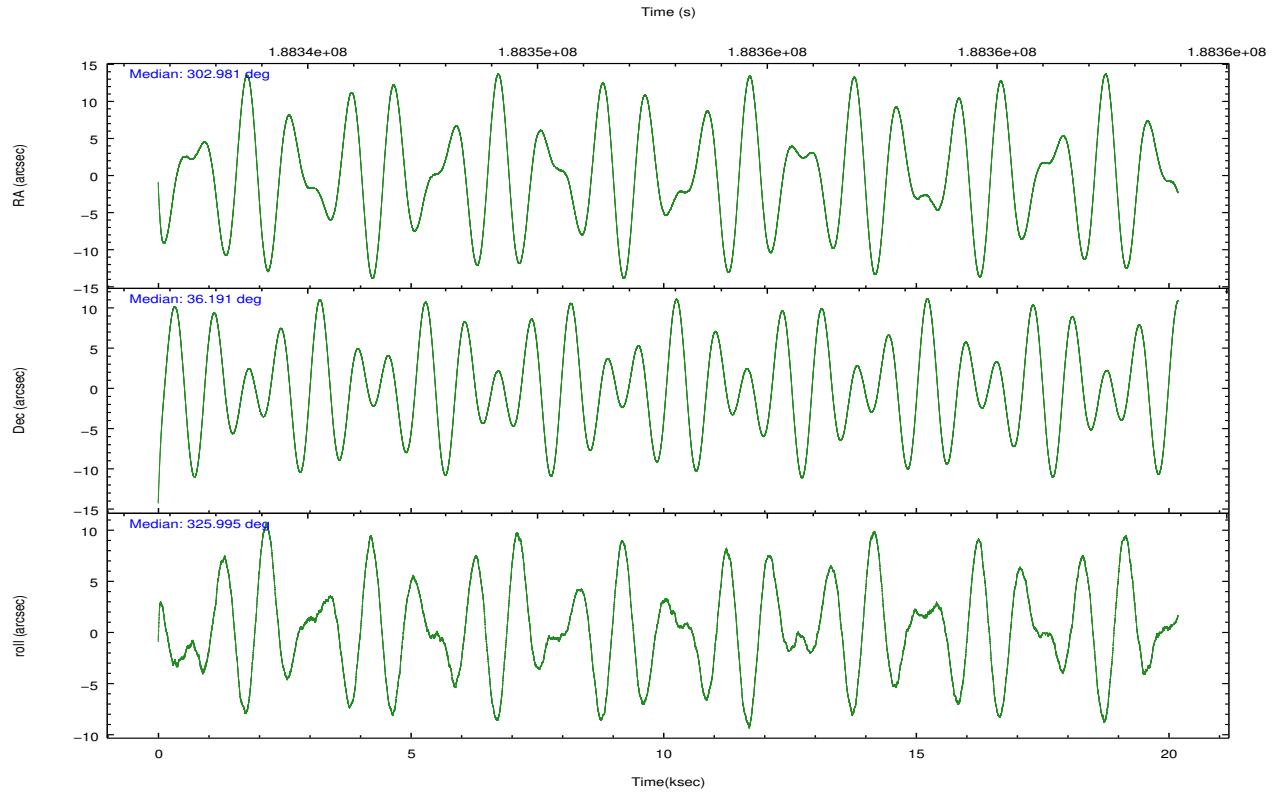
	ccd 1	ccd 3	ccd 6	ccd 7	ccd 8
grade 0 events	4893	4220	5191	5665	10002
	5%	4%	4%	4%	7%
grade 1 events	47	43	53	92	101
	0%	0%	0%	0%	0%
grade 2 events	2512	2165	2435	11376	6661
	2%	2%	2%	9%	5%
grade 3 events	1342	1159	1231	5252	3262
	1%	1%	1%	4%	2%
grade 4 events	1372	1146	1278	5280	3083
	1%	1%	1%	4%	2%
grade 5 events	3898	4116	4320	12645	5893
	4%	3%	3%	10%	4%
grade 6 events	2236	2039	2362	27689	7895
	2%	1%	2%	23%	5%
grade 7 events	79950	88134	91950	51447	96128
	83%	85%	84%	43%	72%

2.2 Compared Parameters

Parameter	Planned	Actual	Parameter	Planned	Actual
Instrument	ACIS	ACIS	Obspar format version number	7	7
Detector	ACIS-13678	ACIS-13678	Obspar file type	PREDICTED	ACTUAL
Grating	NONE	NONE	Obspar update status	NONE	UPDATED
Data mode	VFAINT	VFAINT	Number of optional ACIS chips dropped	0	0
Observation mode	POINTING	POINTING	On-chip summing requested	N	N
[deg] Pointing RA	302.947830	302.9815257087957	Subarray requested	NONE	NONE
[deg] Pointing Dec	36.192153	36.19063086800153	Alternating exposures requested	N	N
[deg] Pointing Roll	325.864004	326.0007336032993	[s] Primary exposure time	0.000000	3.1
[mm] SIM focus pos	-0.684267	-0.6828225247311905			
[mm] SIM defocus	0	0.001444936568705701			
[mm] SIM translation stage pos	-190.132523	-190.1400660498719			
[mm] SIM translation stage offset	0	0.00754346686406393			
[s] Observation start time (MET)	188342928.184000	188341768.60619			
Observation start date	2003-12-20T21:27:44	2003-12-20T21:09:28			
[s] Observation end time (MET)	188362928.184000	188363664.14464			
Observation end date	2003-12-21T03:01:04	2003-12-21T03:14:24			
Read mode	TIMED	TIMED			

2.3 Aspect



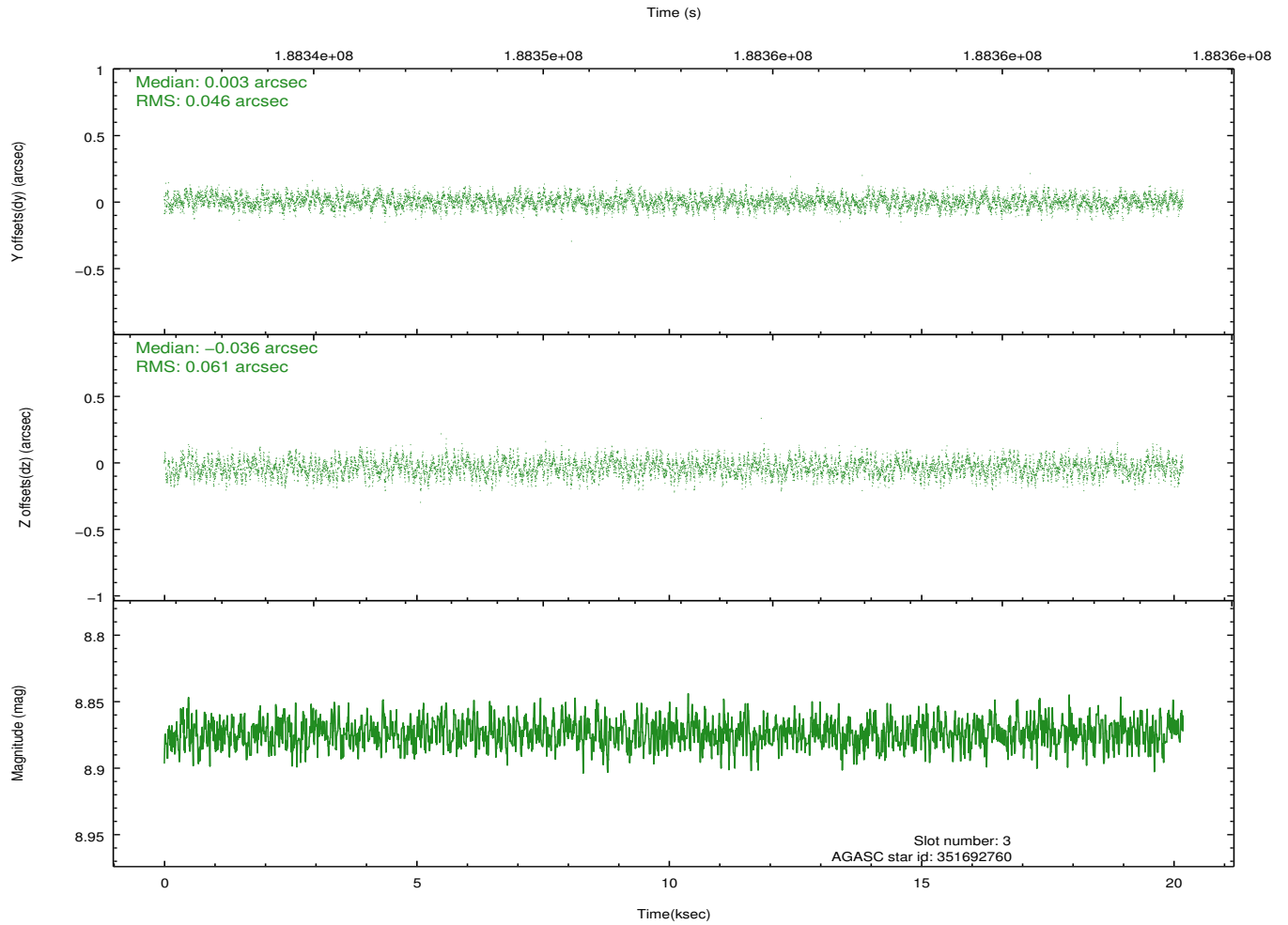
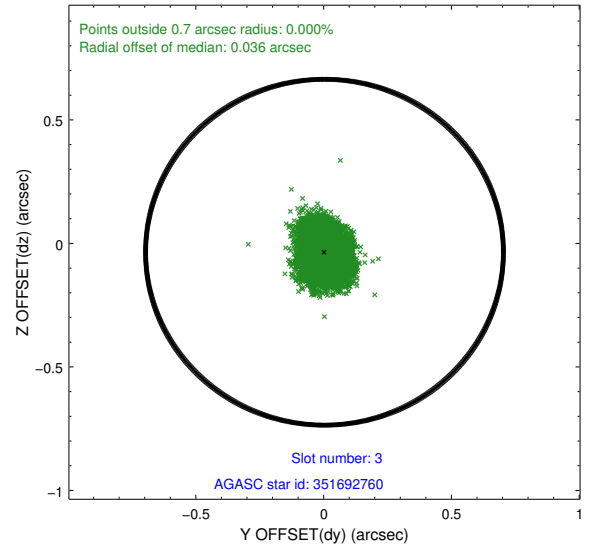
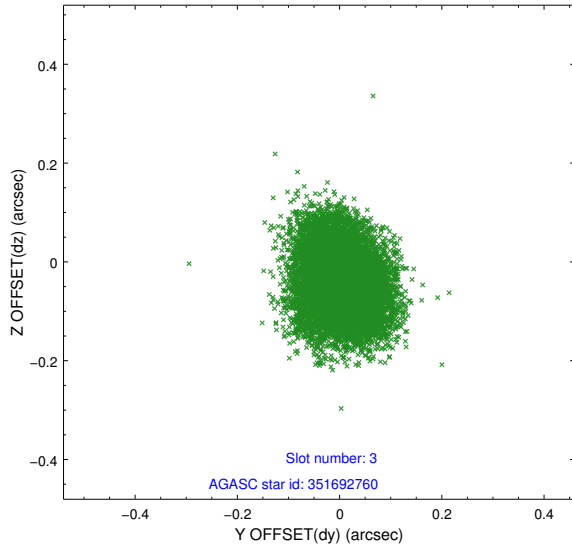


Slot Statistics

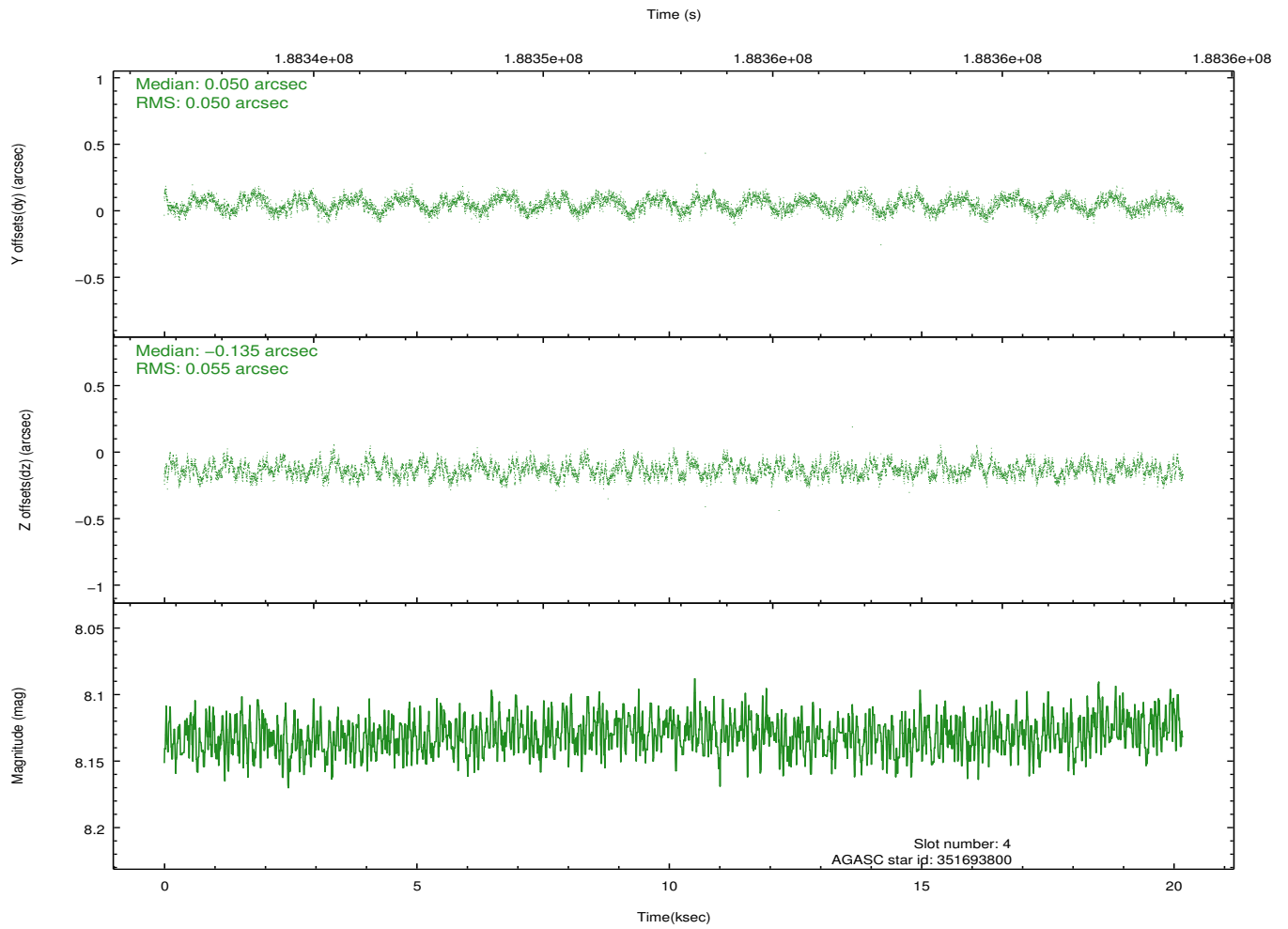
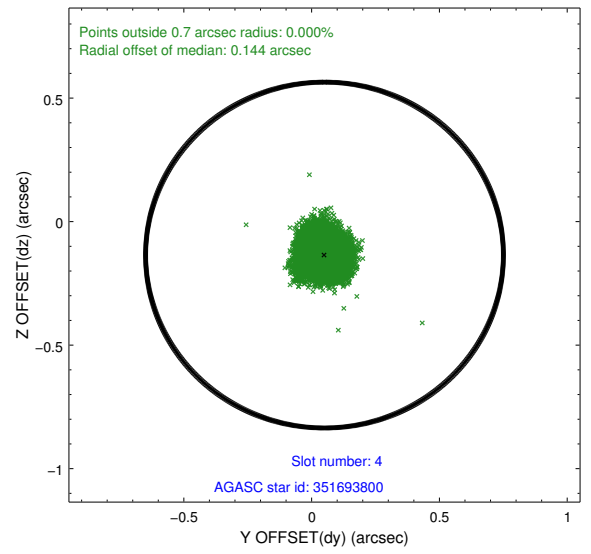
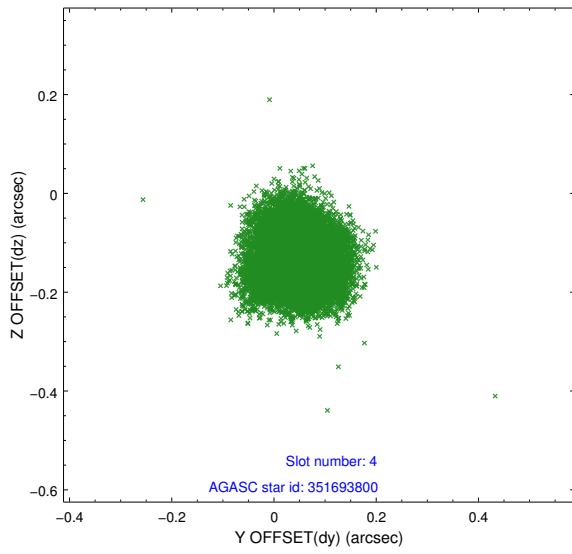
slot	status	id	mag	n_pts	med_dy	med_dz	dr1	dr2	ra	dec	mean_y	mean_z
0	FID	ACIS-S-2	7.10	4923	-0.043	-0.002	0.007	0.011	0.000000	0.000000	-759.87	-1731.87
1	FID	ACIS-S-4	7.20	4923	0.051	0.022	0.007	0.012	0.000000	0.000000	2153.38	176.50
2	FID	ACIS-S-5	7.23	4924	-0.040	-0.010	0.007	0.011	0.000000	0.000000	-1812.51	170.28
3	GUIDE	351692760	8.87	9843	0.003	-0.036	0.082	0.130	303.295224	36.725490	-248.63	2153.15
4	GUIDE	351693800	8.13	9846	0.050	-0.135	0.081	0.120	302.737590	35.953172	-24.23	-1055.28
5	GUIDE	351694320	8.05	9845	-0.111	-0.042	0.084	0.131	302.369202	35.733696	-475.80	-2311.02
6	GUIDE	351808432	9.17	9841	0.017	0.085	0.079	0.131	303.880382	36.137762	2346.98	1370.29
7	GUIDE	351668192	8.50	9838	0.039	0.134	0.076	0.121	303.428785	36.486042	557.06	1660.10

2.4 Star Slots

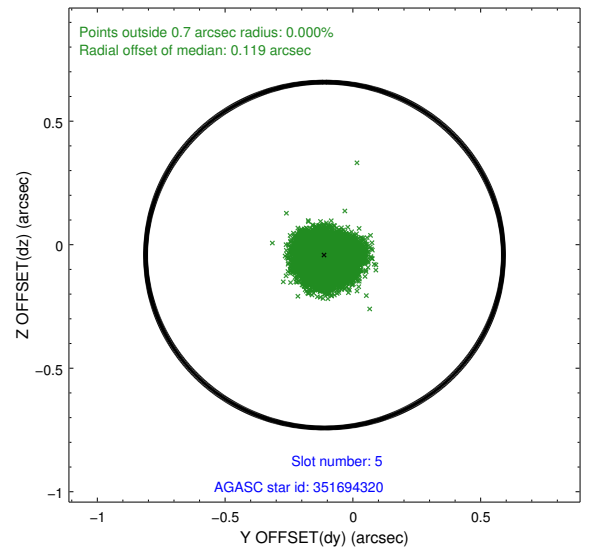
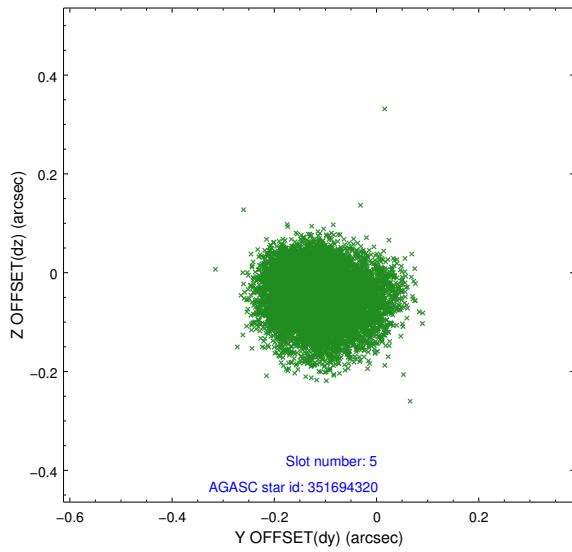
2.4.1 Slot 3



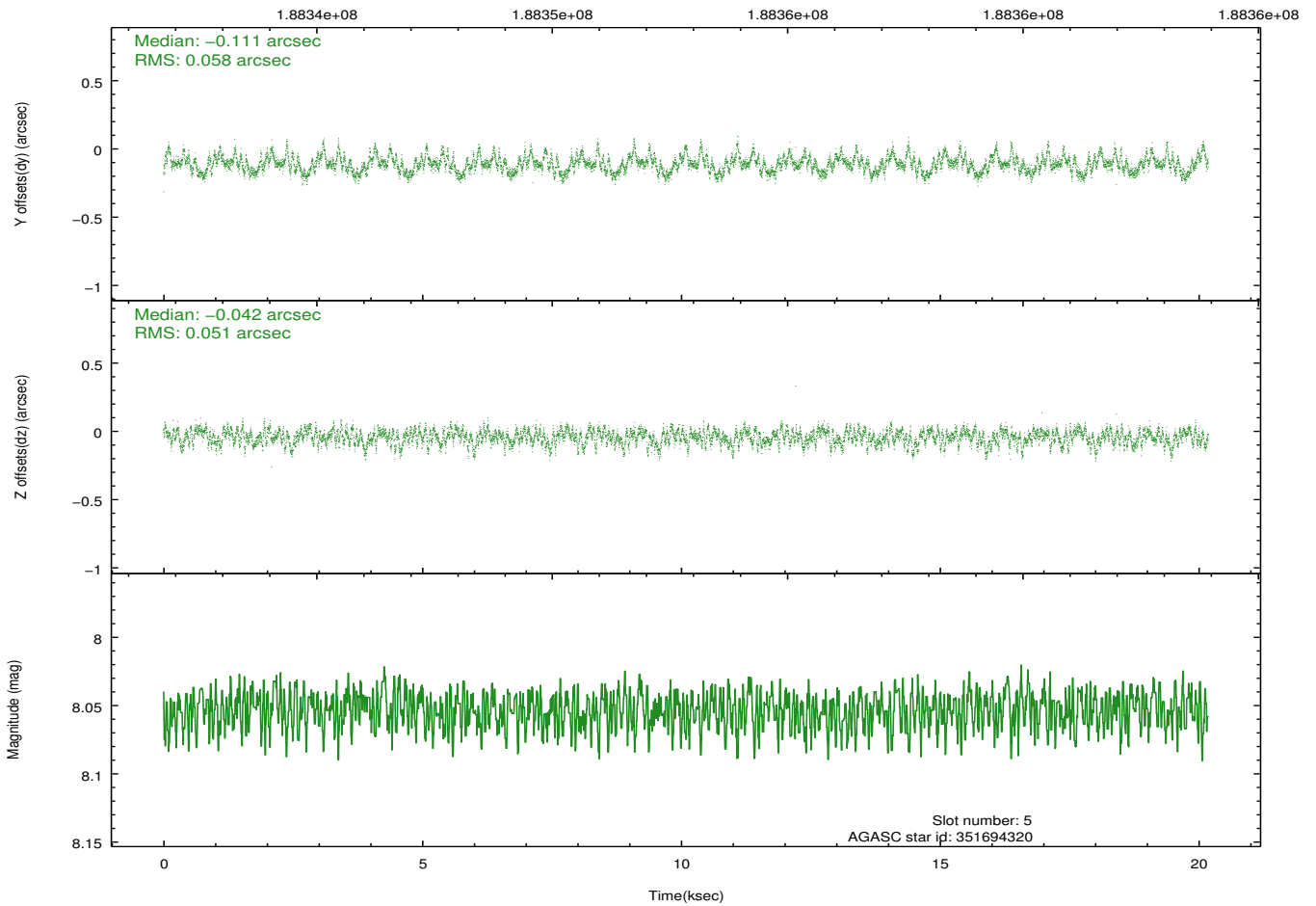
2.4.2 Slot 4



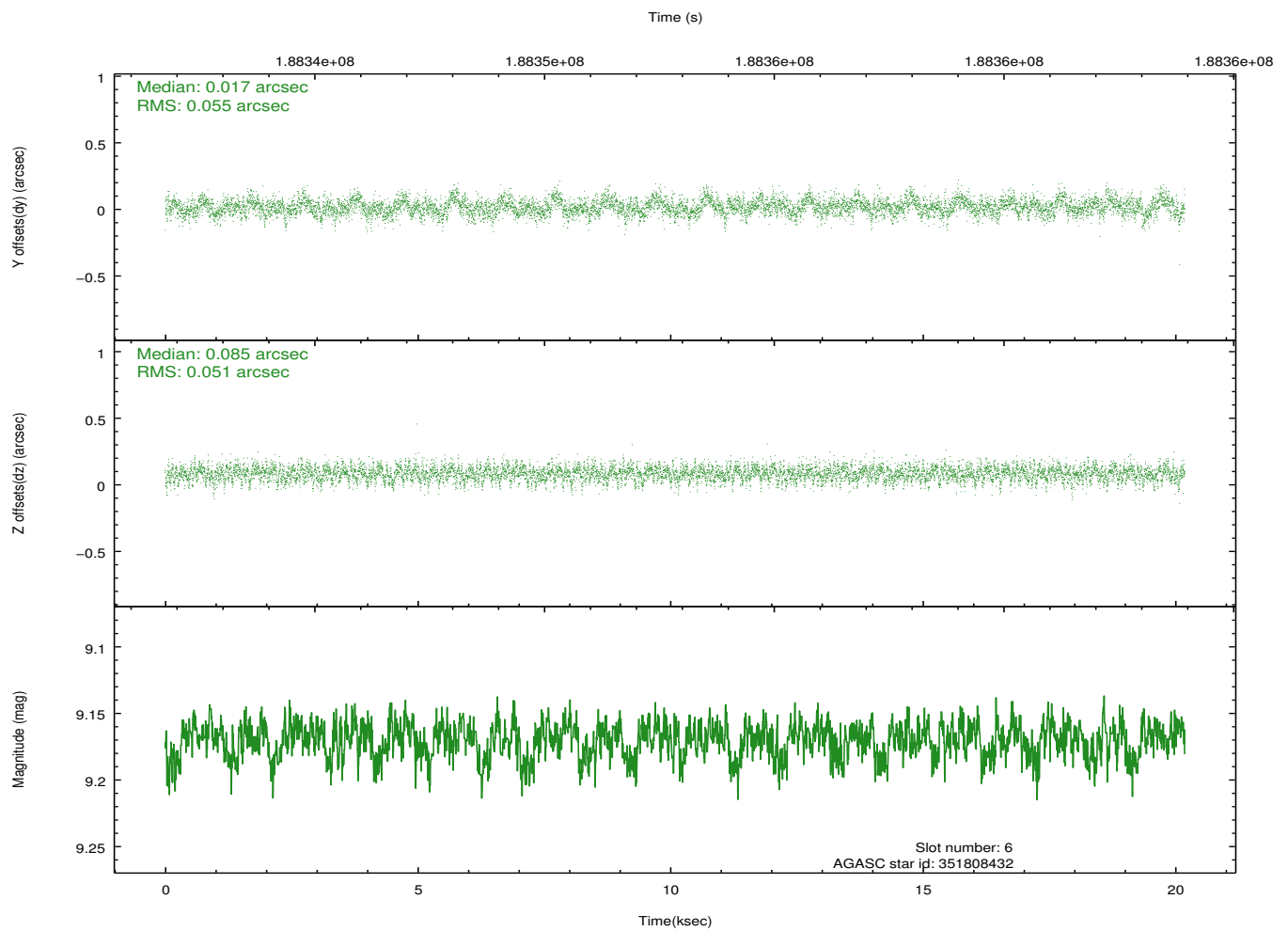
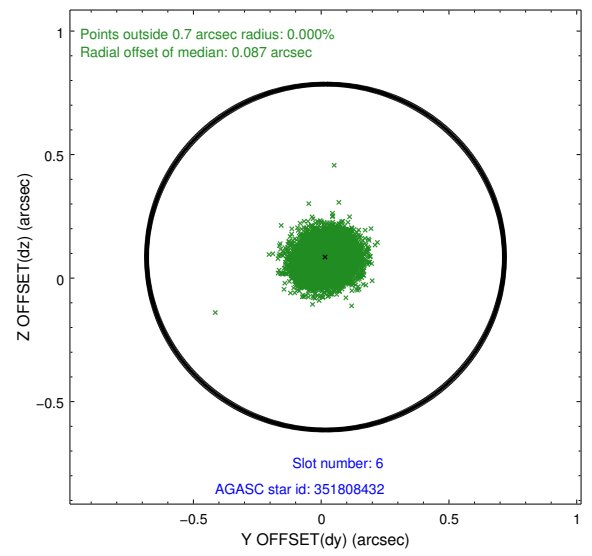
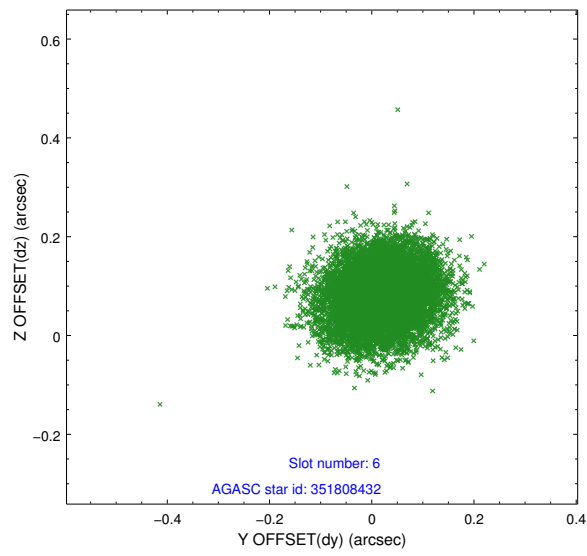
2.4.3 Slot 5



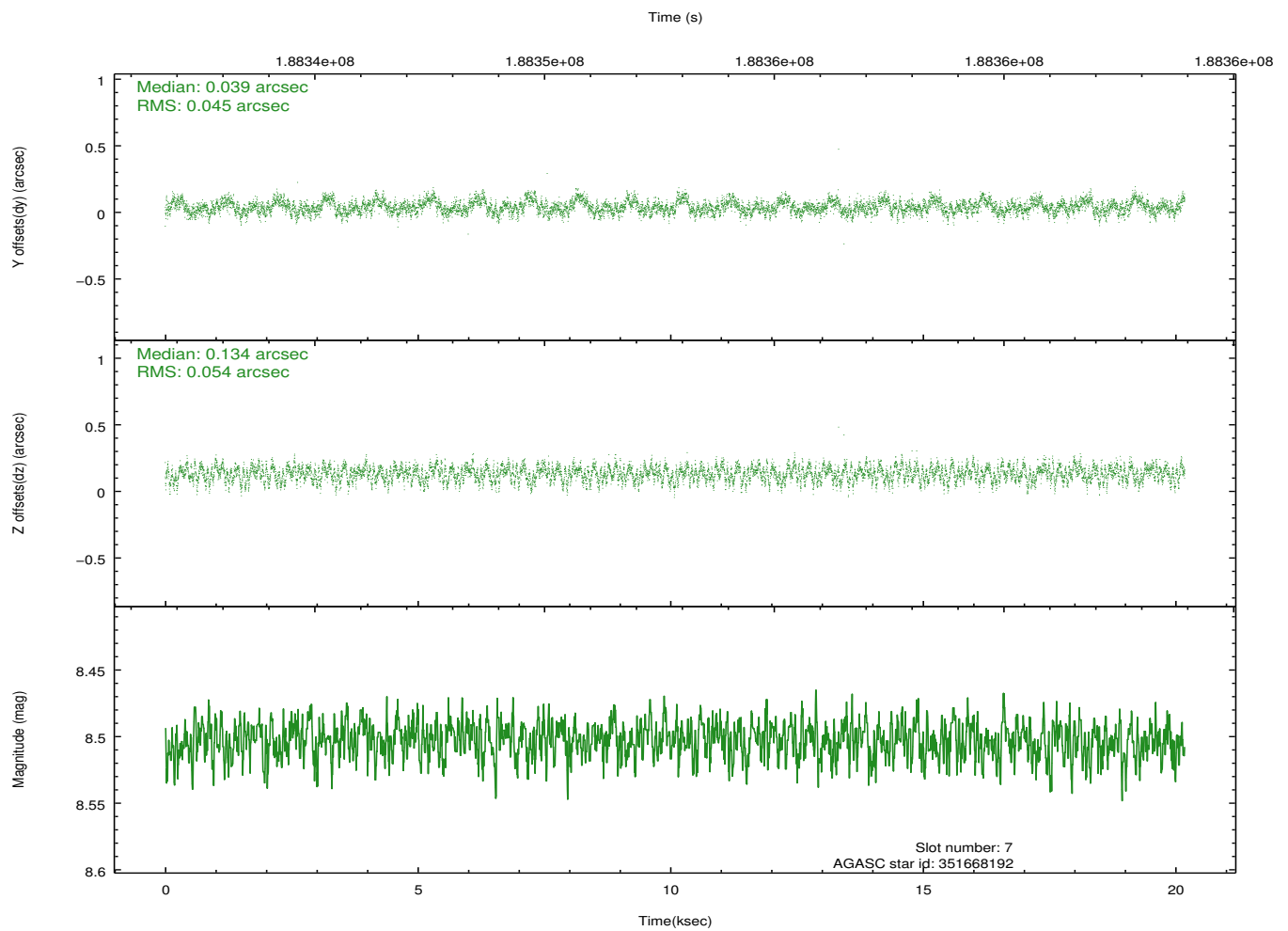
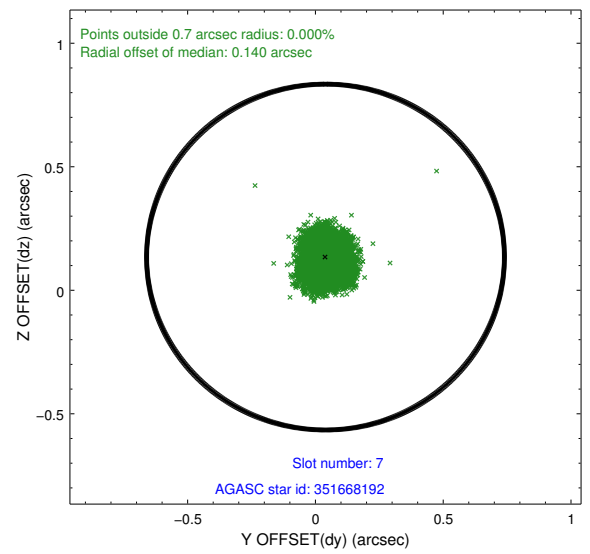
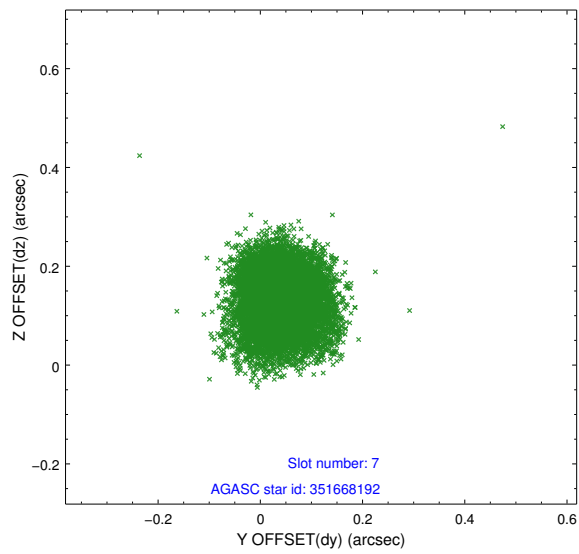
Time (s)



2.4.4 Slot 6

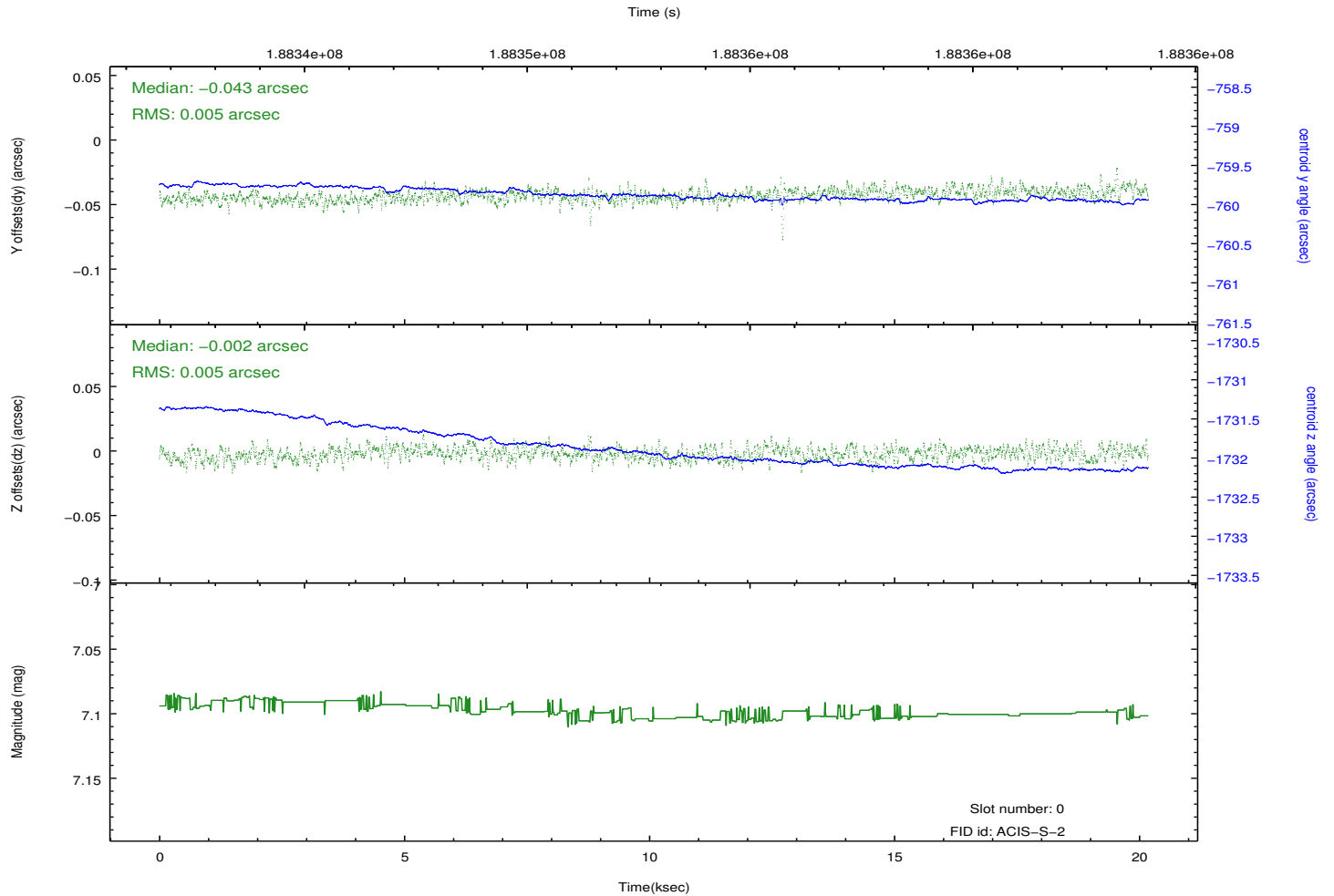
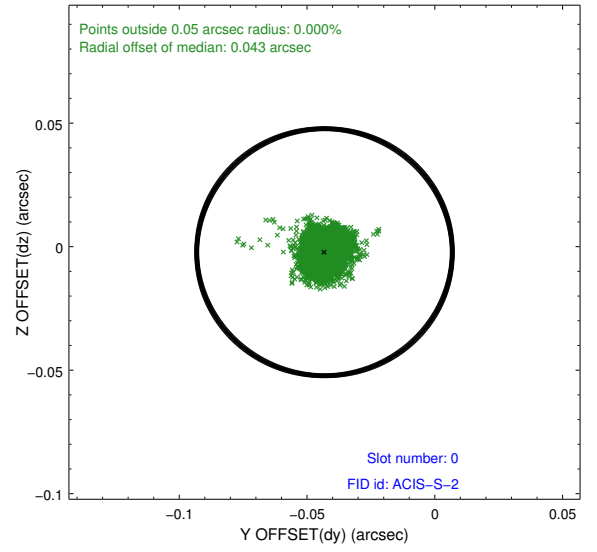
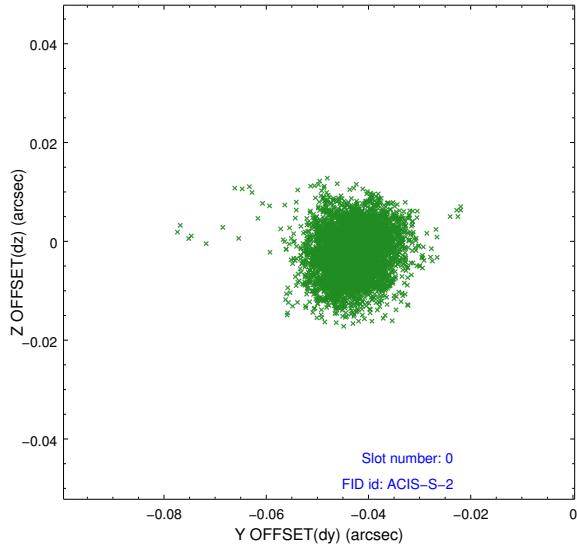


2.4.5 Slot 7

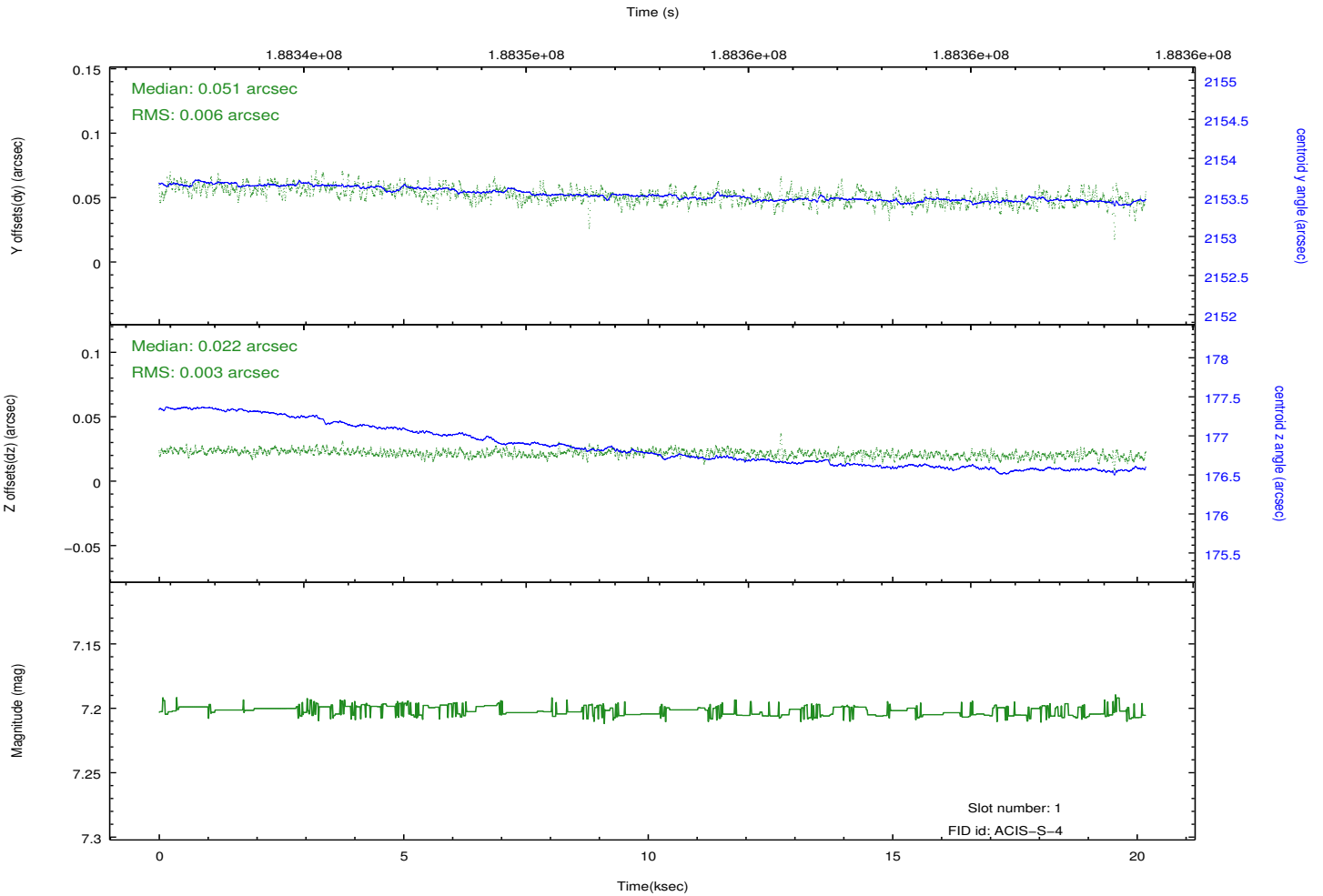
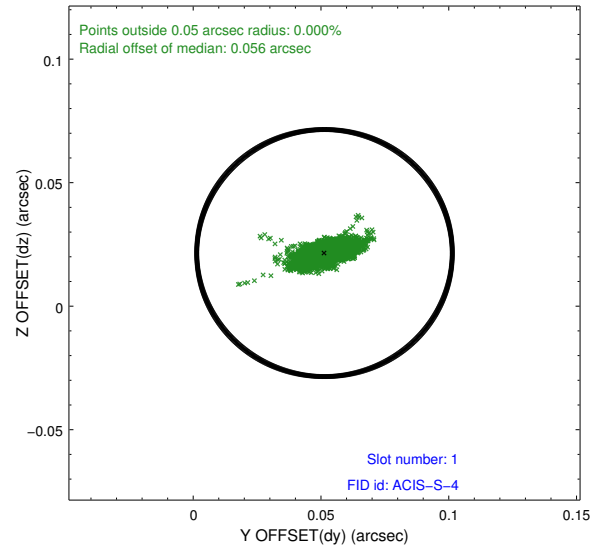
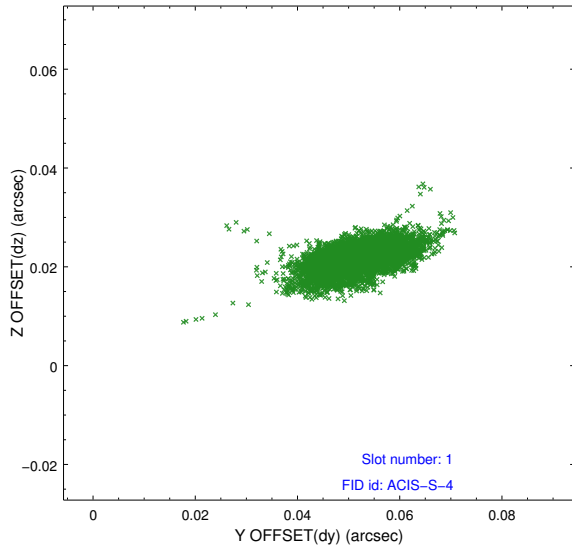


2.5 FID Slots

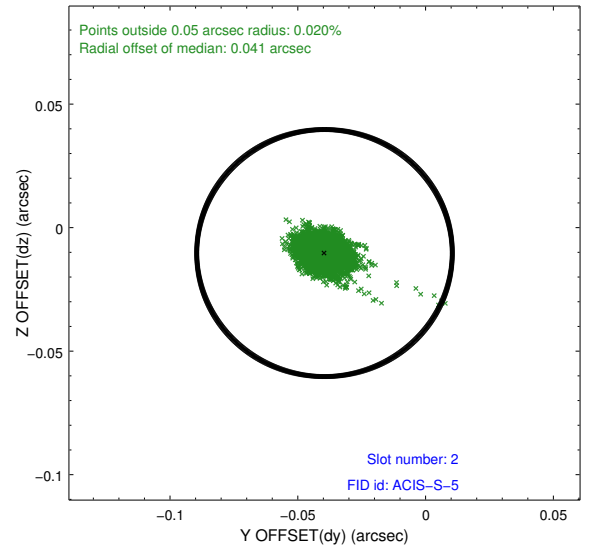
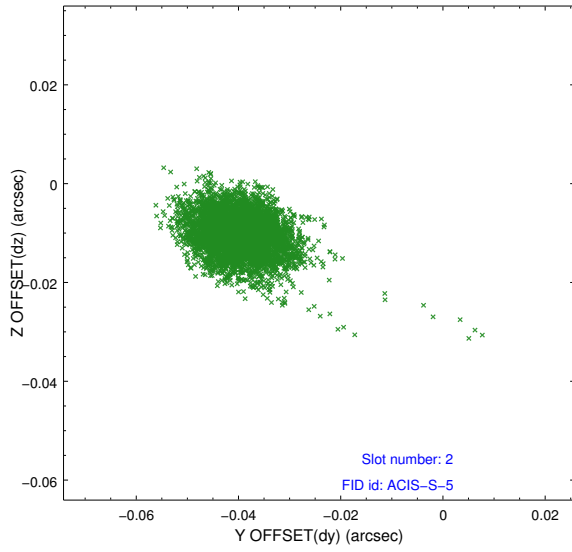
2.5.1 Slot 0



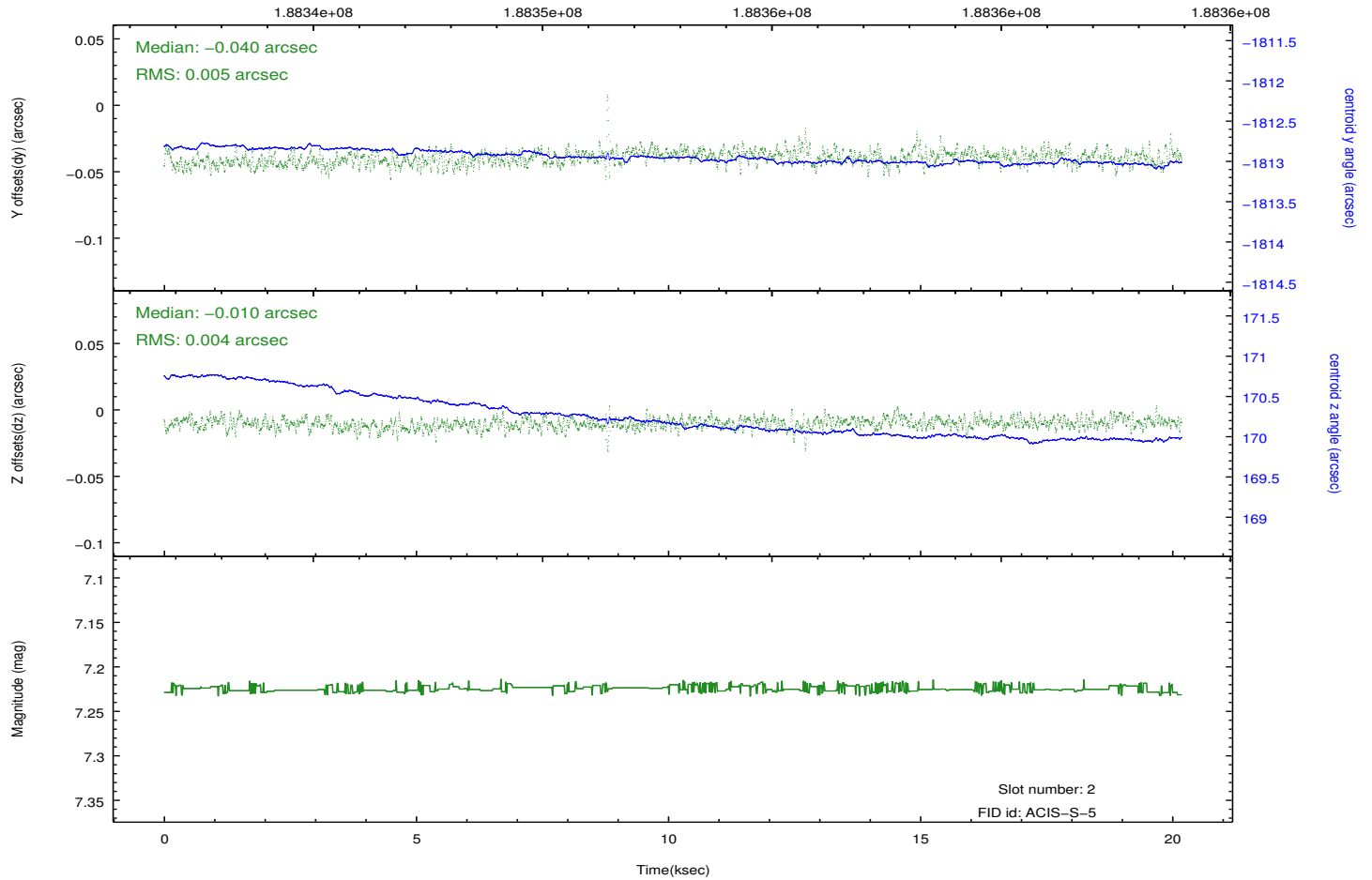
2.5.2 Slot 1



2.5.3 Slot 2



Time (s)



A Summary

A.1 Status

V&V Scientist	Jen Lauer
V&V Date (YYYY-MM-DD)	2012.12.03
V&V Edition	1
V&V Disposition and Status	OK
V&V Charge Time	20.174

A.2 Comments

Roll preference not met.