

V&V Reference Report

L2 ASCDS Version : 8.5.1.1

Observation 4496 - L2 Version 3
Chandra X-Ray Center

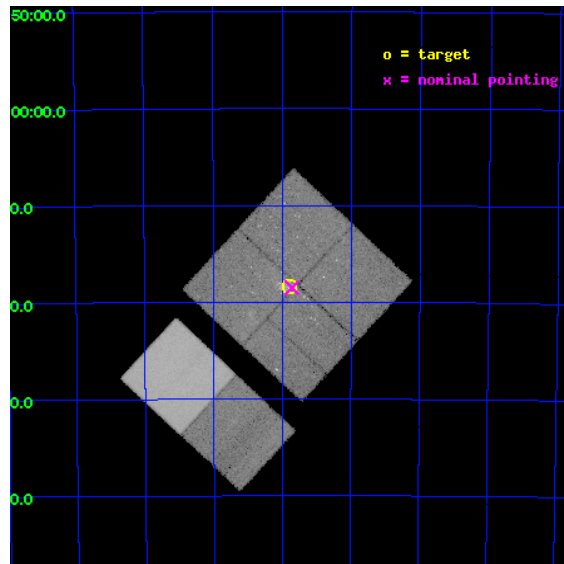
L2 Processing Date : Dec 26 2012

Contents

1	Front	2
2	OBI	3
2.1	OBI	3
2.1.1	Images	3
2.1.2	Bias	3
2.1.3	Parameters	4
2.1.4	Events	4
2.2	Compared Parameters	5
2.3	Aspect	6
2.4	Star Slots	9
2.4.1	Slot 3	9
2.4.2	Slot 4	10
2.4.3	Slot 5	11
2.4.4	Slot 6	12
2.4.5	Slot 7	13
2.5	FID Slots	14
2.5.1	Slot 0	14
2.5.2	Slot 1	15
2.5.3	Slot 2	16
A	Summary	17
A.1	Status	17
A.2	Comments	17

1 Front

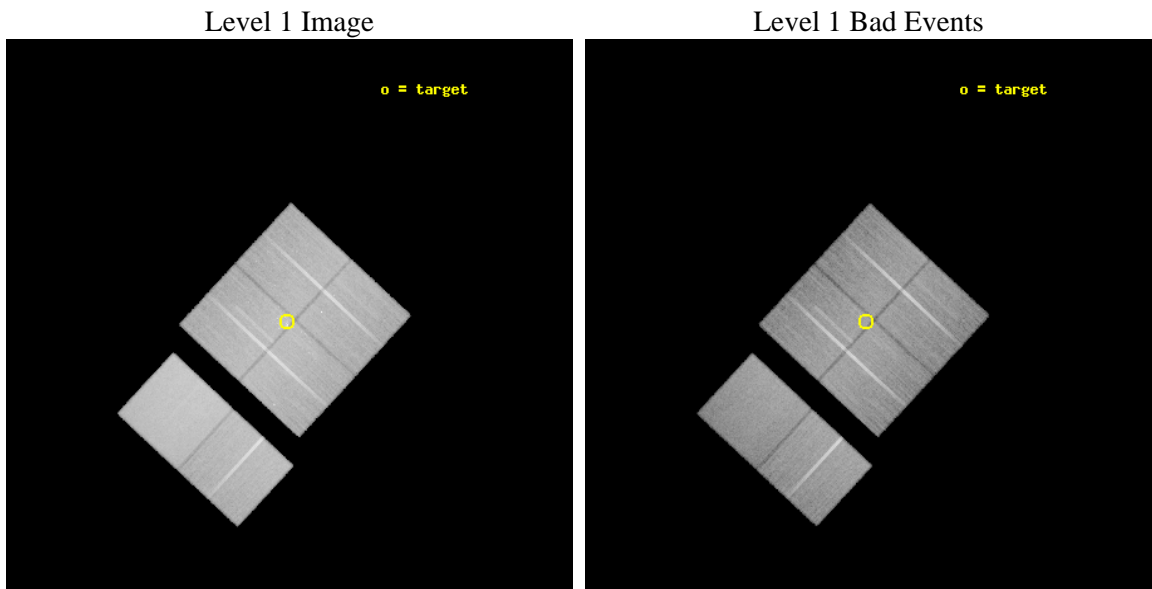
seq_num	200265	Sequence number
obs_id	4496	Observation id
title	X-ray Flows from the Giant HII Region NGC 3576	Proposal title
observer	Dr. Leisa Townsley	Principal investigator
object	NGC 3576	Source name
dtycycle	0	
cycle	P	events from which exps? Prim/Second/Both
ra_targ	167.974167	Observer's specified target RA [deg]
dec_targ	-61.306944	Observer's specified target Dec [deg]
ra_nom	167.96504774467	Nominal RA [deg]
dec_nom	-61.308536293407	Nominal Dec [deg]
roll_nom	222.90068419274	Nominal Roll [deg]
revision	3	Processing version of data
ontime	41023.999847174	Sum of GTIs [s]
livetime	40504.529259422	Livetime [s]
ontime0	41017.446880043	Sum of GTIs [s]
ontime1	41023.969780892	Sum of GTIs [s]
ontime2	41023.999847174	Sum of GTIs [s]
ontime3	41023.999847174	Sum of GTIs [s]
ontime6	41023.999847174	Sum of GTIs [s]
ontime7	41023.999847174	Sum of GTIs [s]
l2events	376747	Number of level 2 events



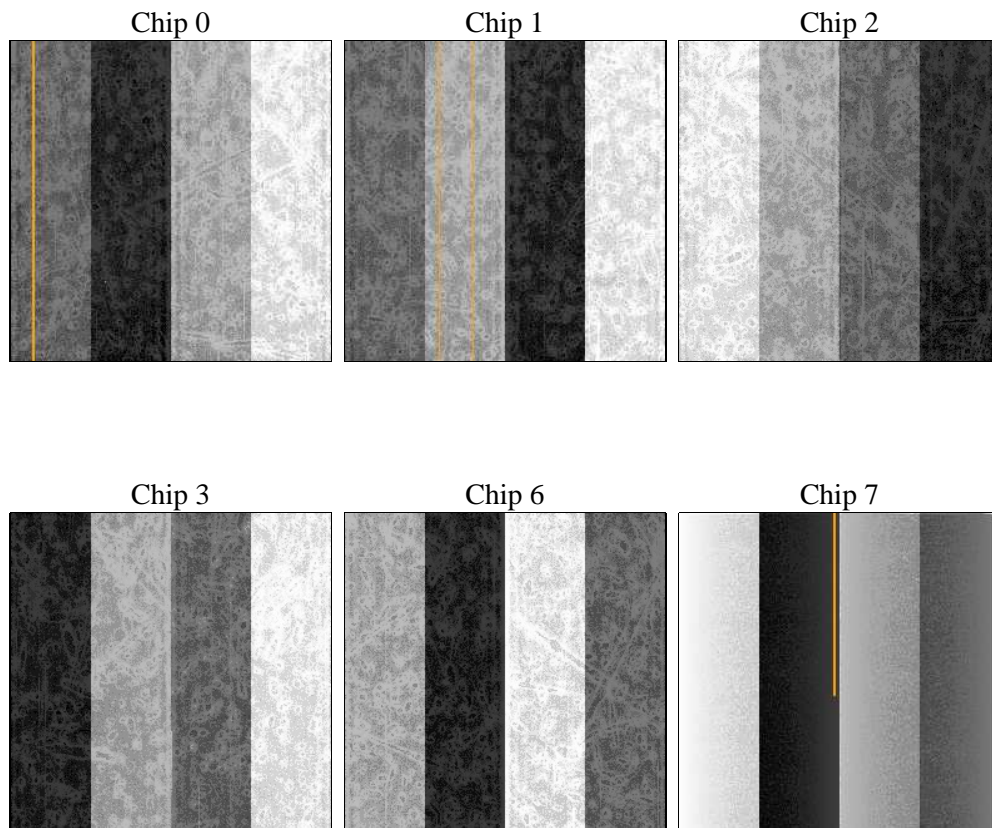
2 OBI

2.1 OBI

2.1.1 Images



2.1.2 Bias



2.1.3 Parameters

obi_num	0	Obi number	sched_exp_time	41000.000000	[s] Scheduled observation exposure time
ascdsver	8.5.1.1	Processing system revision	ontime	41023.999847174	Sum of GTIs [s]
caldbver	4.5.5	 	ontime0	41017.446880043	Sum of GTIs [s]
date	2012-12-26T14:18:52	Date and time of file creation	ontime1	41023.969780892	Sum of GTIs [s]
revision	3	Processing version of data	ontime2	41023.999847174	Sum of GTIs [s]
			ontime3	41023.999847174	Sum of GTIs [s]
			ontime6	41023.999847174	Sum of GTIs [s]
			ontime7	41023.999847174	Sum of GTIs [s]
			l1events	2025228	Number of level 1 events

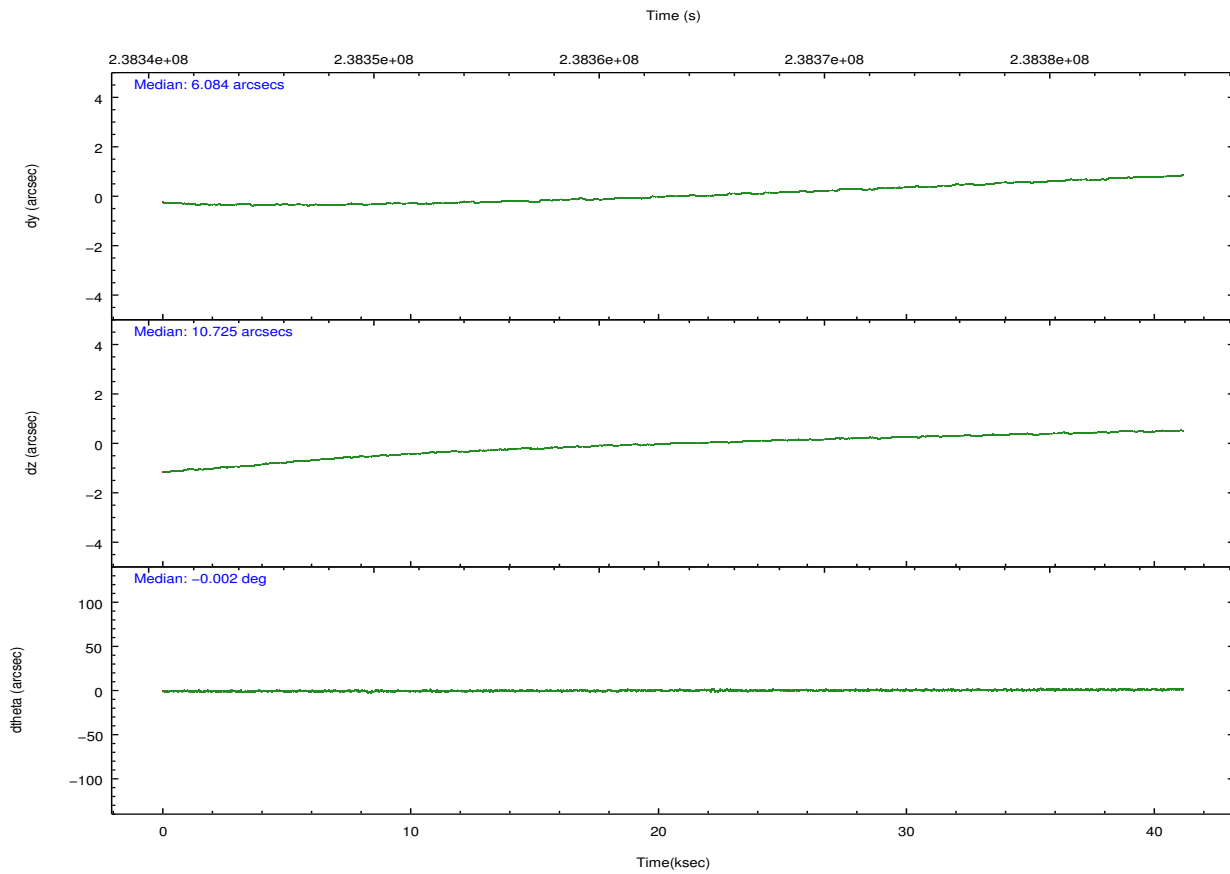
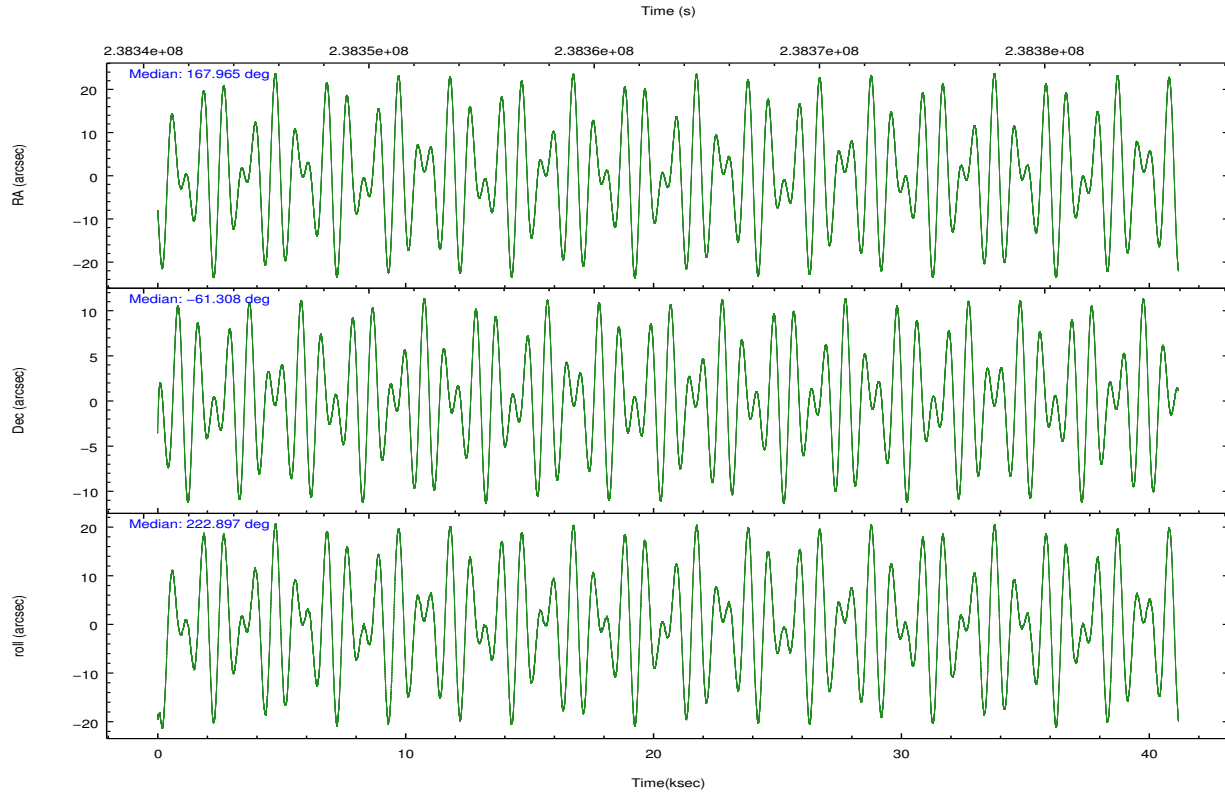
2.1.4 Events

	ccd 0	ccd 1	ccd 2	ccd 3	ccd 6	ccd 7		ccd 0	ccd 1	ccd 2	ccd 3	ccd 6	ccd 7
level 1 events	296644	303282	326461	320234	334418	444189	grade 0 events	20011	20470	20697	22843	17015	17028
rejected events	253653	257125	283958	274292	293348	254383		6%	6%	6%	7%	5%	3%
rejected %	85%	84%	86%	85%	87%	57%	grade 1 events	198	145	235	246	158	442
								0%	0%	0%	0%	0%	0%
							grade 2 events	8661	9641	8288	8392	8711	37600
								2%	3%	2%	2%	2%	8%
							grade 3 events	3865	3996	3604	3874	3754	16433
								1%	1%	1%	1%	1%	3%
							grade 4 events	3617	3944	3601	3955	3699	16306
								1%	1%	1%	1%	1%	3%
							grade 5 events	12918	13502	12304	14320	15171	41292
								4%	4%	3%	4%	4%	9%
							grade 6 events	6840	8111	6314	6880	7895	102447
								2%	2%	1%	2%	2%	23%
							grade 7 events	240534	243473	271418	259724	278015	212641
								81%	80%	83%	81%	83%	47%

2.2 Compared Parameters

Parameter	Planned	Actual	Parameter	Planned	Actual
Instrument	ACIS	ACIS	Obspar format version number	7	7
Detector	ACIS-012367	ACIS-012367	Obspar file type	PREDICTED	ACTUAL
Grating	NONE	NONE	Obspar update status	NONE	UPDATED
Data mode	VFAINT	VFAINT	Number of optional ACIS chips dropped	0	0
Observation mode	POINTING	POINTING	On-chip summing requested	N	N
[deg] Pointing RA	167.981626	167.9650477446738	Subarray requested	NONE	NONE
[deg] Pointing Dec	-61.282329	-61.3085362934068	Alternating exposures requested	N	N
[deg] Pointing Roll	222.706546	222.90068419274	[s] Primary exposure time	0.000000	3.2
[mm] SIM focus pos	-0.782348	-0.7809083437167272			
[mm] SIM defocus	0	0.001439871863259334			
[mm] SIM translation stage pos	-233.592463	-233.5874344608287			
[mm] SIM translation stage offset	0	-0.005018542100998502			
[s] Observation start time (MET)	238342866.184000	238341872.51585			
Observation start date	2005-07-21T14:20:02	2005-07-21T14:04:32			
[s] Observation end time (MET)	238383866.184000	238384692.40531			
Observation end date	2005-07-22T01:43:22	2005-07-22T01:58:12			
Read mode	TIMED	TIMED			

2.3 Aspect

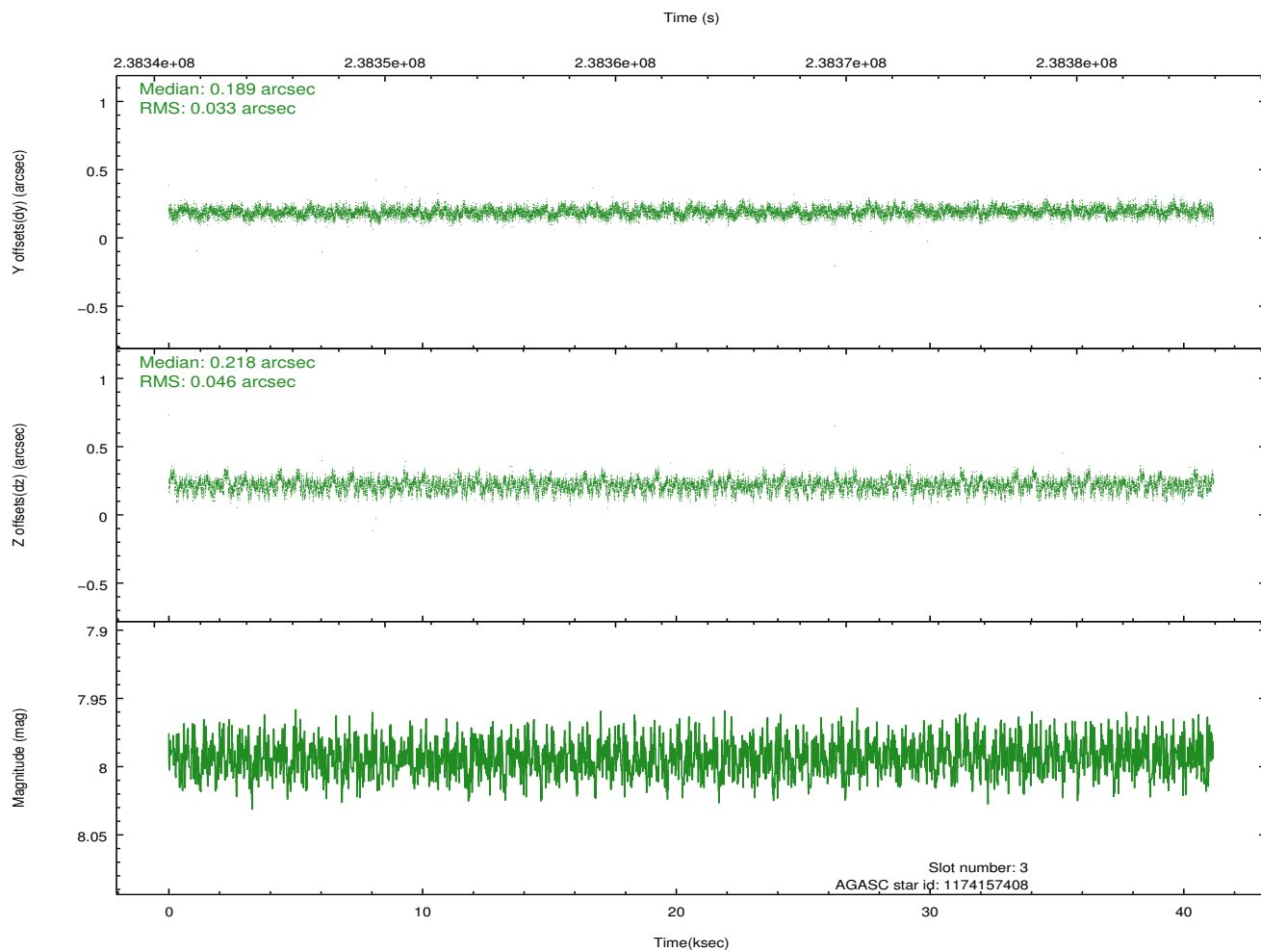
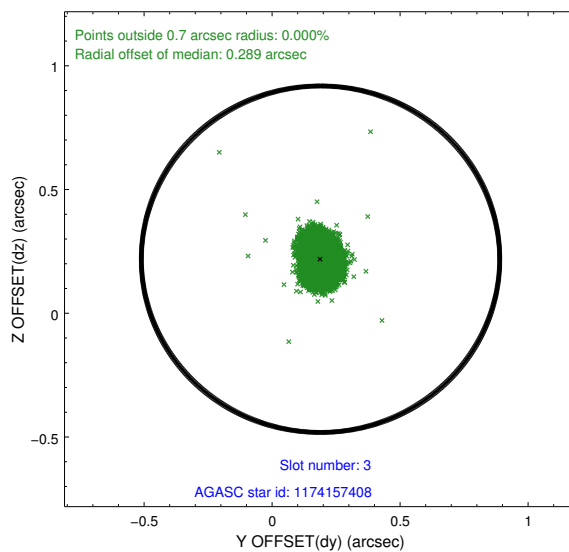
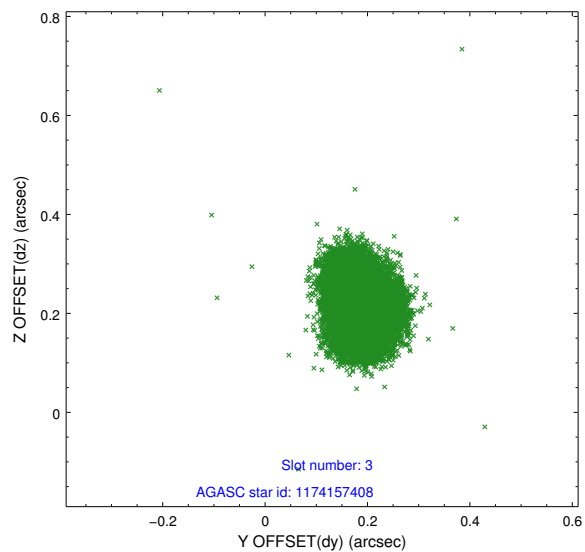


Slot Statistics

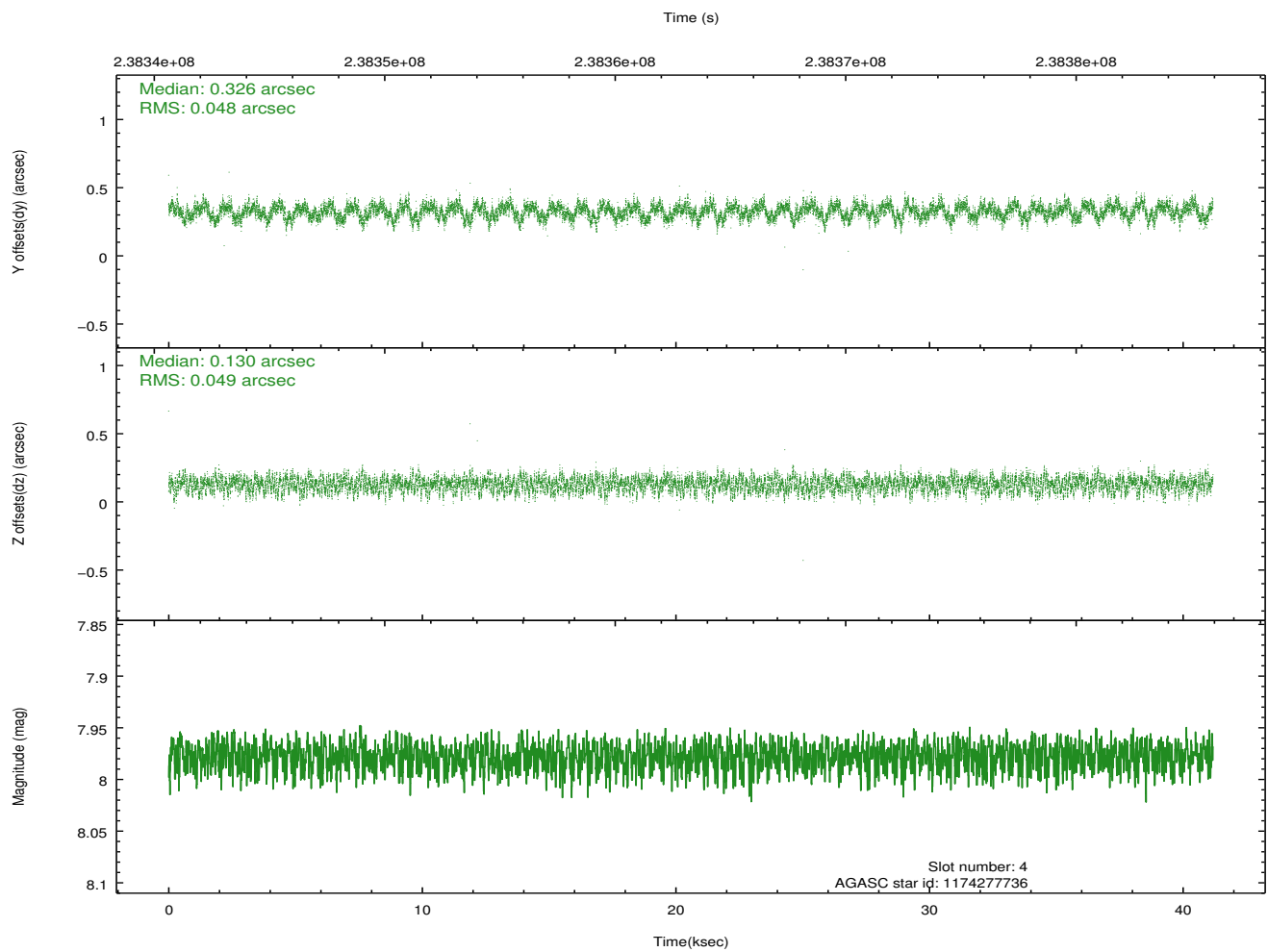
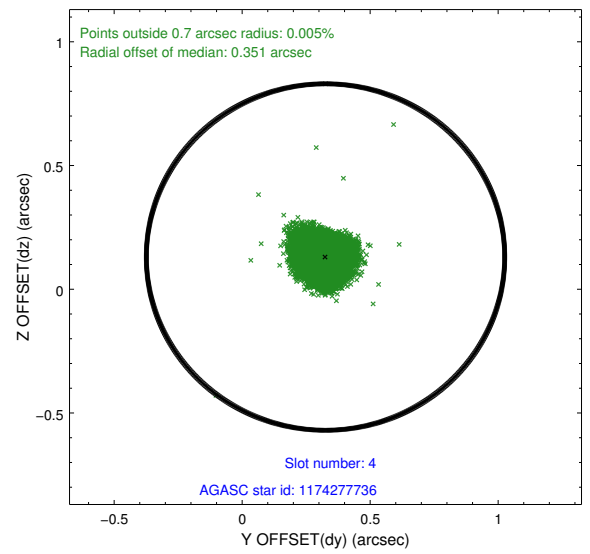
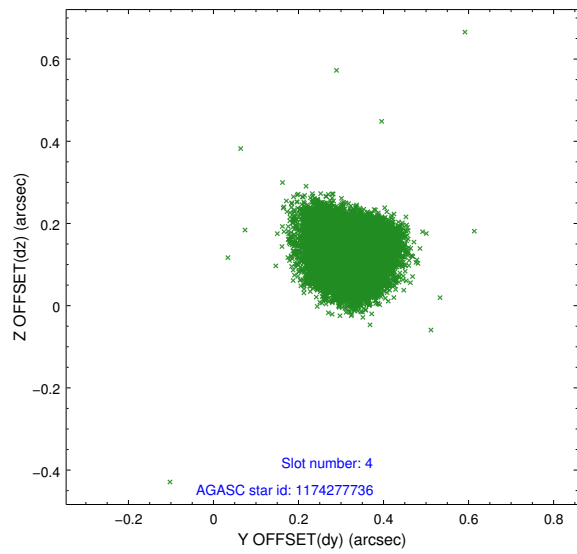
slot	status	id	mag	n_pts	med_dy	med_dz	dr1	dr2	ra	dec	mean_y	mean_z
0	FID	ACIS-I-1	7.25	10042	-0.000	-0.038	0.031	0.071	0.000000	0.000000	933.54	-834.14
1	FID	ACIS-I-4	7.18	10043	0.080	0.049	0.029	0.047	0.000000	0.000000	2153.68	1065.73
2	FID	ACIS-I-5	7.22	10044	-0.178	0.059	0.018	0.030	0.000000	0.000000	-1814.62	1063.62
3	GUIDE	1174157408	7.99	20087	0.189	0.218	0.060	0.098	167.115550	-61.626529	1936.26	-86.64
4	GUIDE	1174277736	7.98	20088	0.326	0.130	0.073	0.114	167.205882	-61.559450	1659.96	-162.76
5	GUIDE	1174281840	8.16	20087	-0.155	-0.190	0.074	0.116	167.912903	-60.443364	-1958.53	-2302.41
6	GUIDE	1174282480	7.02	20090	-0.356	-0.017	0.048	0.078	168.099465	-60.378692	-2360.52	-2248.39
7	GUIDE	1174286632	8.71	20083	-0.001	-0.138	0.068	0.107	169.069142	-61.673672	-399.08	2306.41

2.4 Star Slots

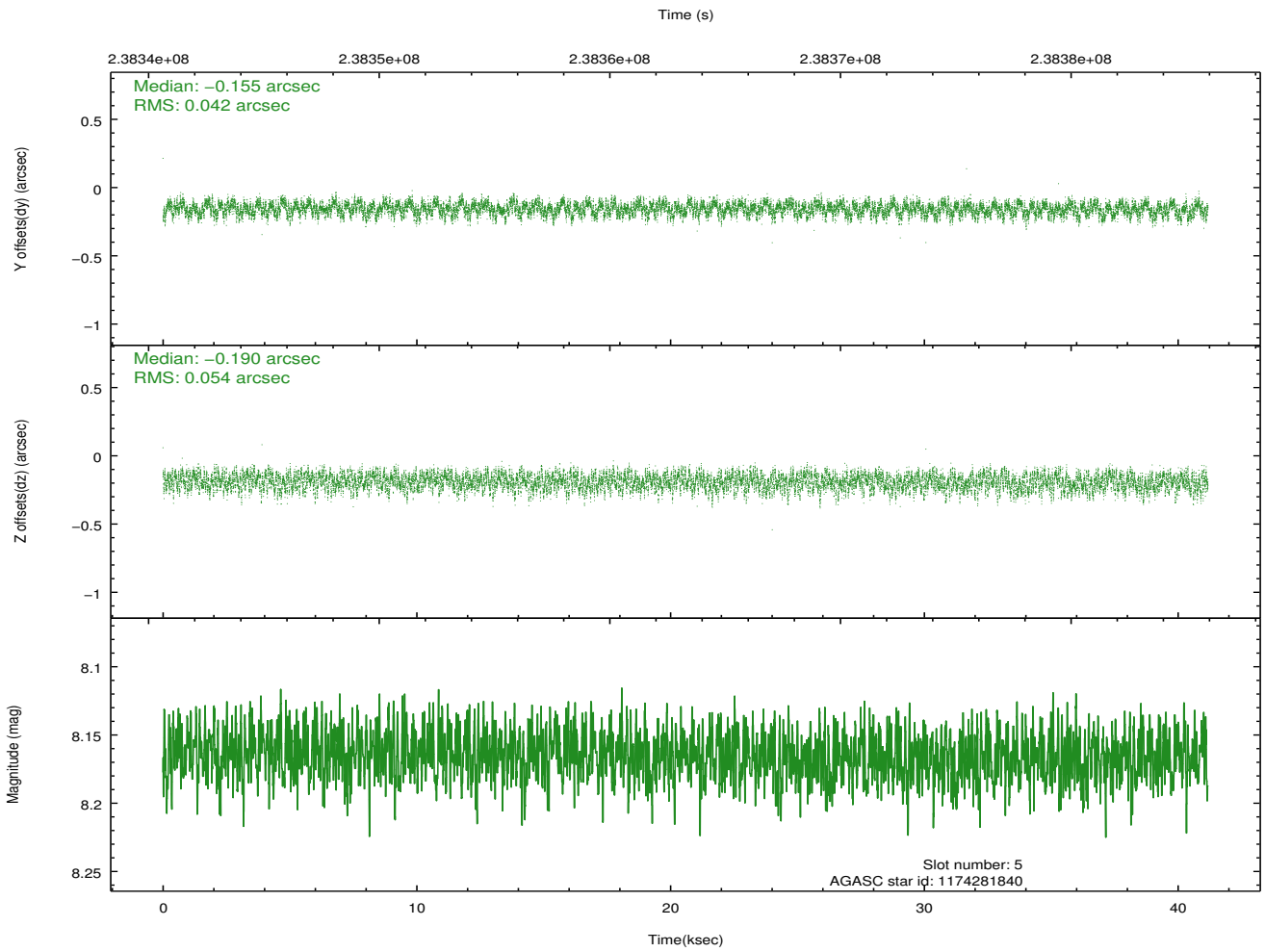
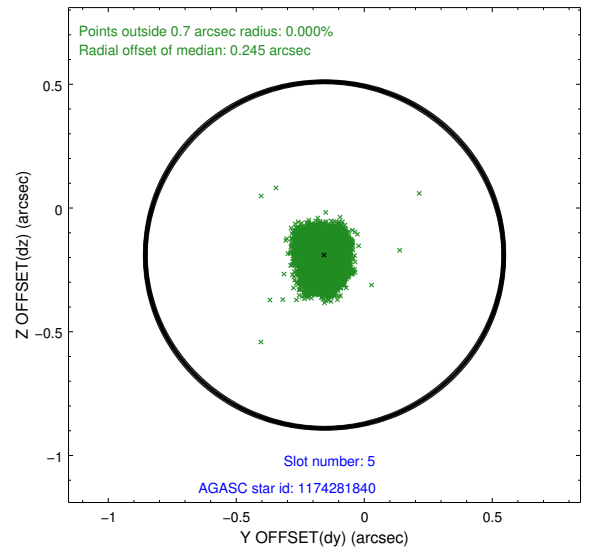
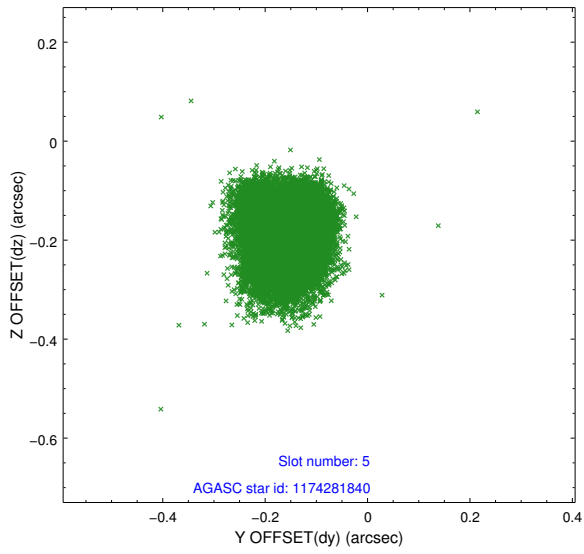
2.4.1 Slot 3



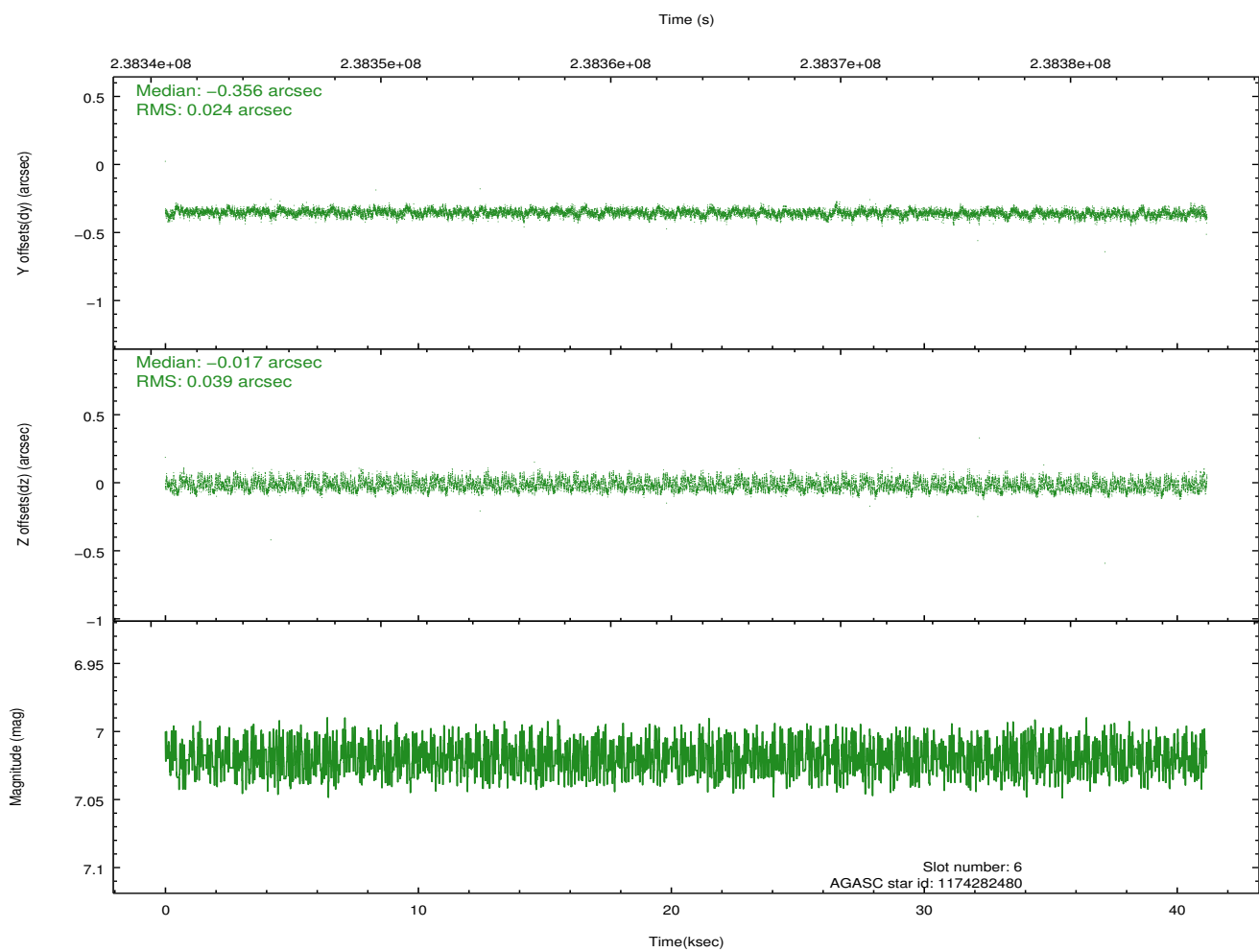
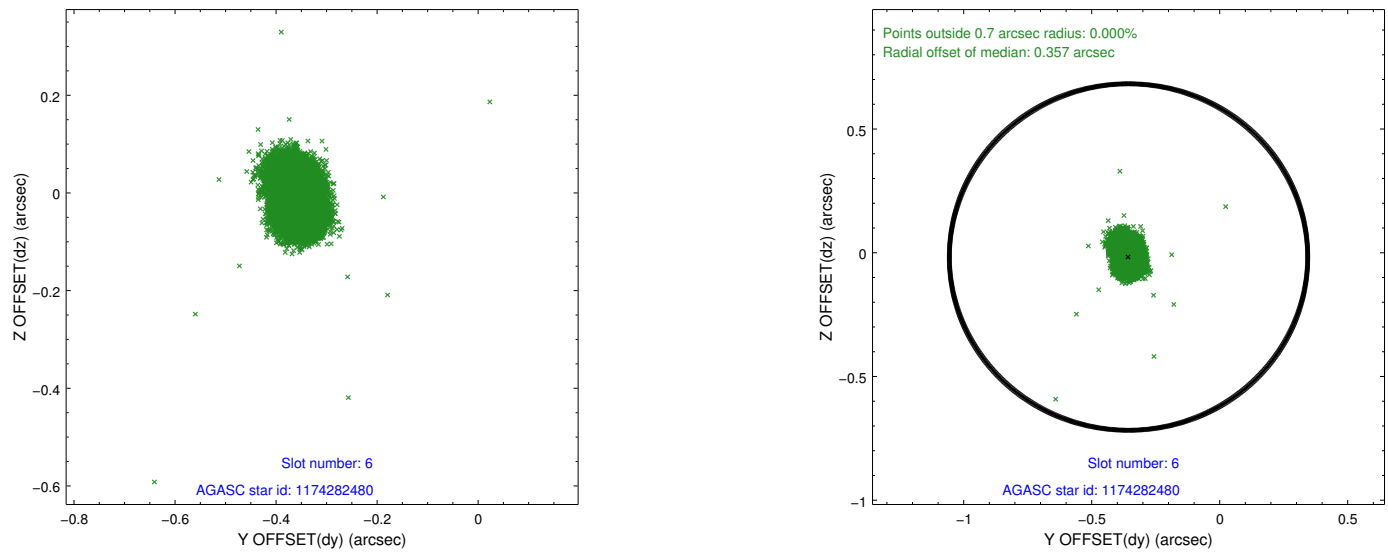
2.4.2 Slot 4



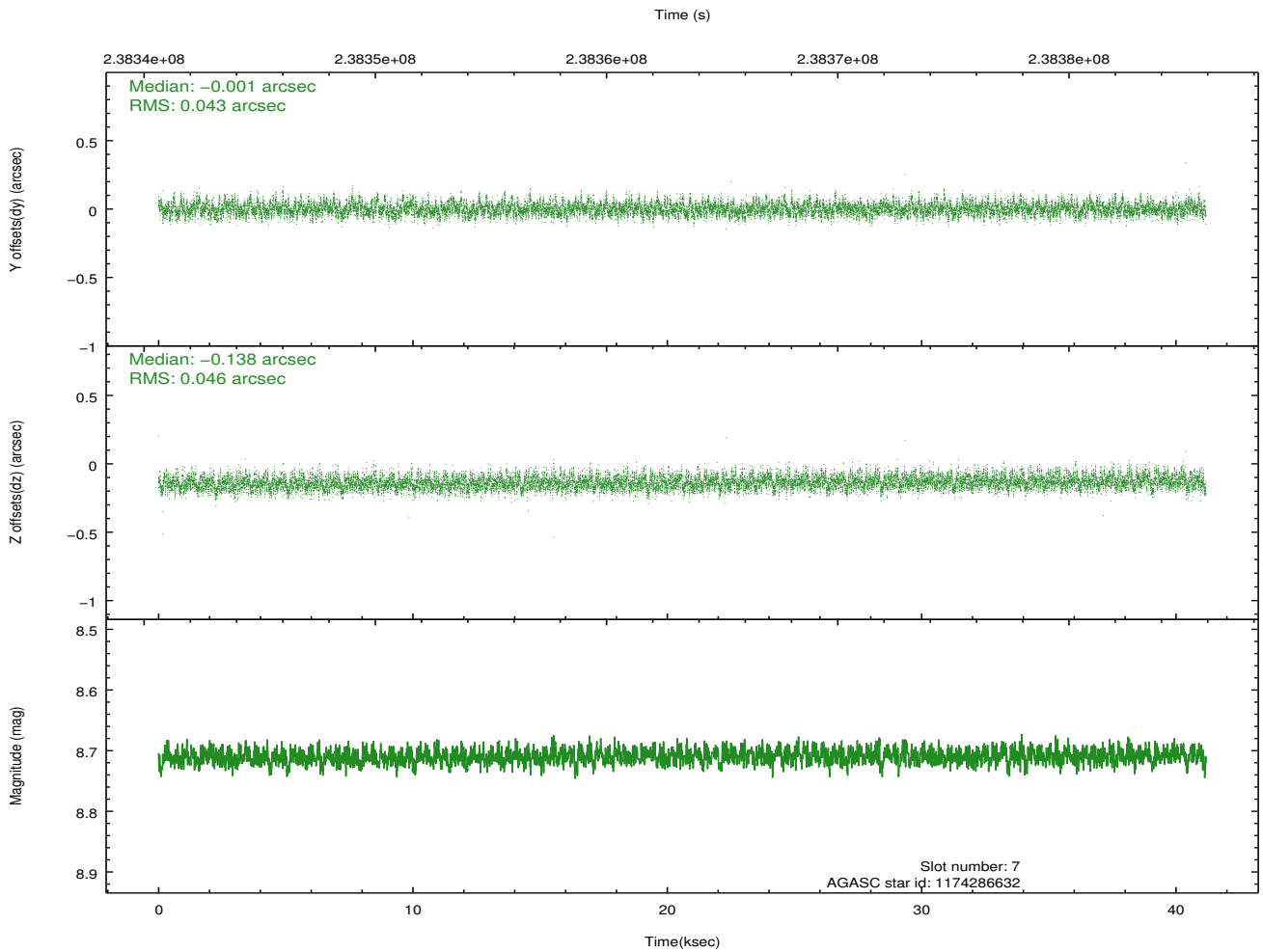
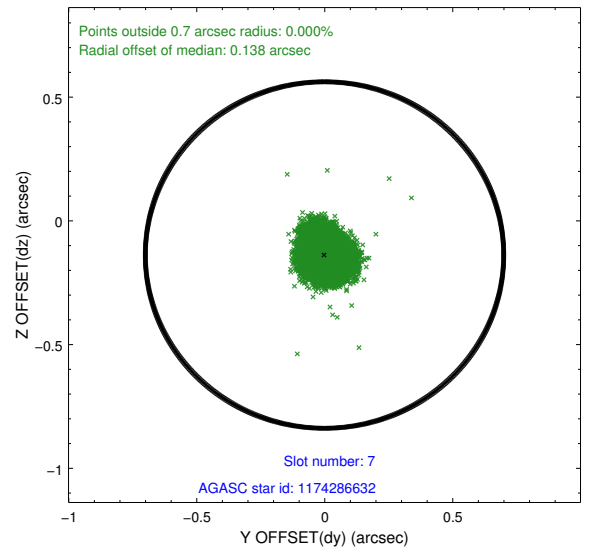
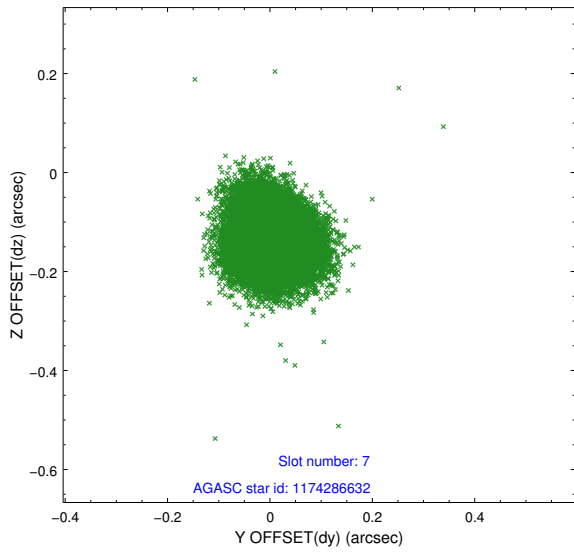
2.4.3 Slot 5



2.4.4 Slot 6

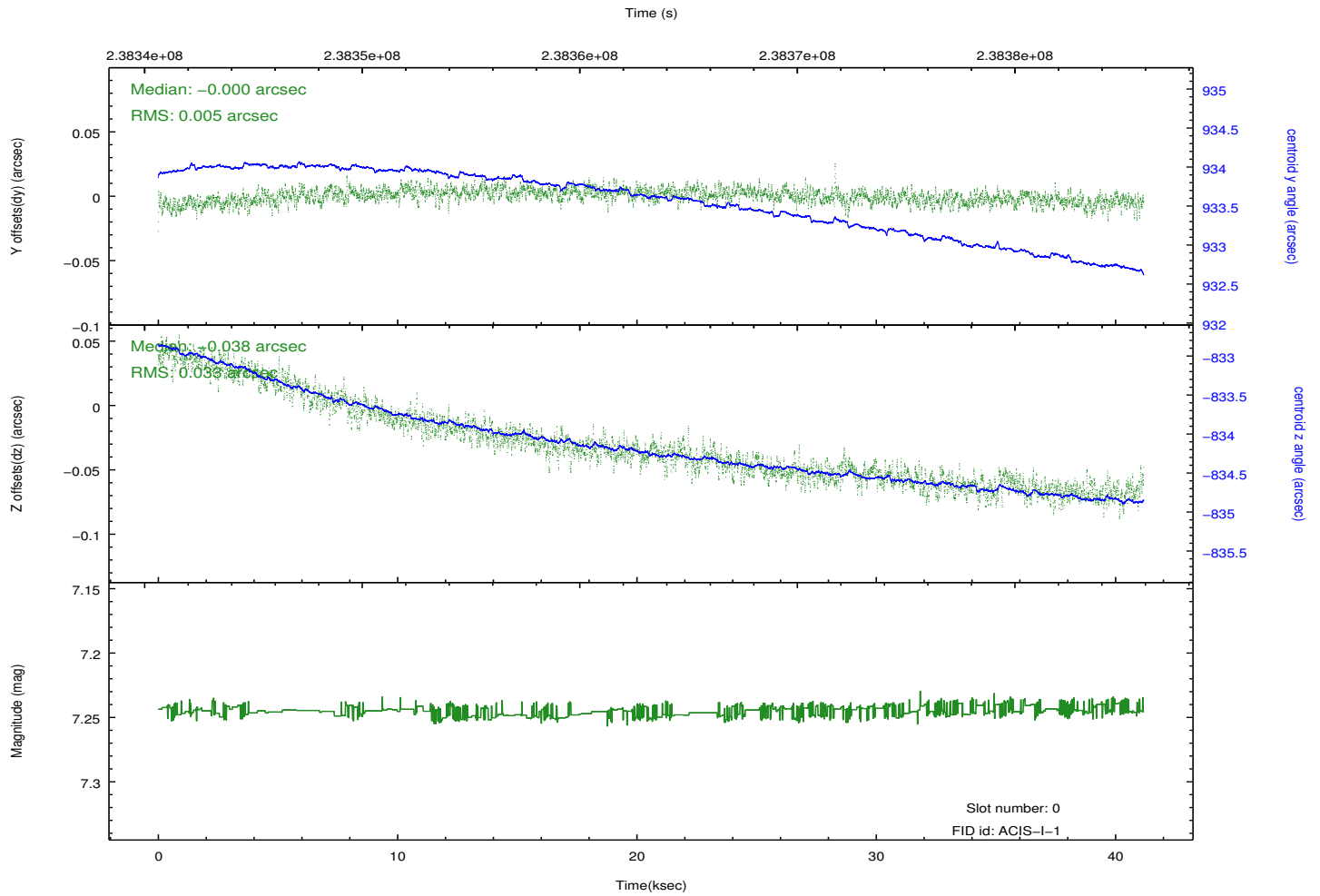
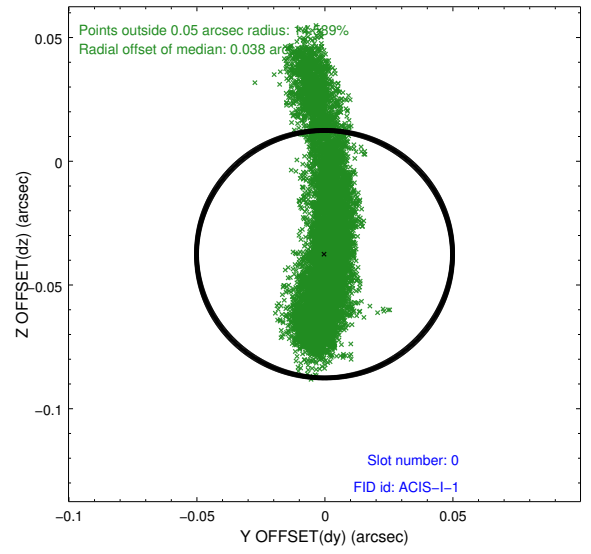
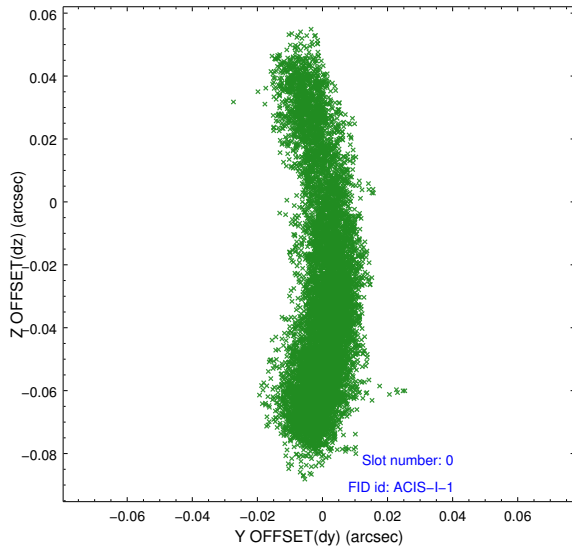


2.4.5 Slot 7

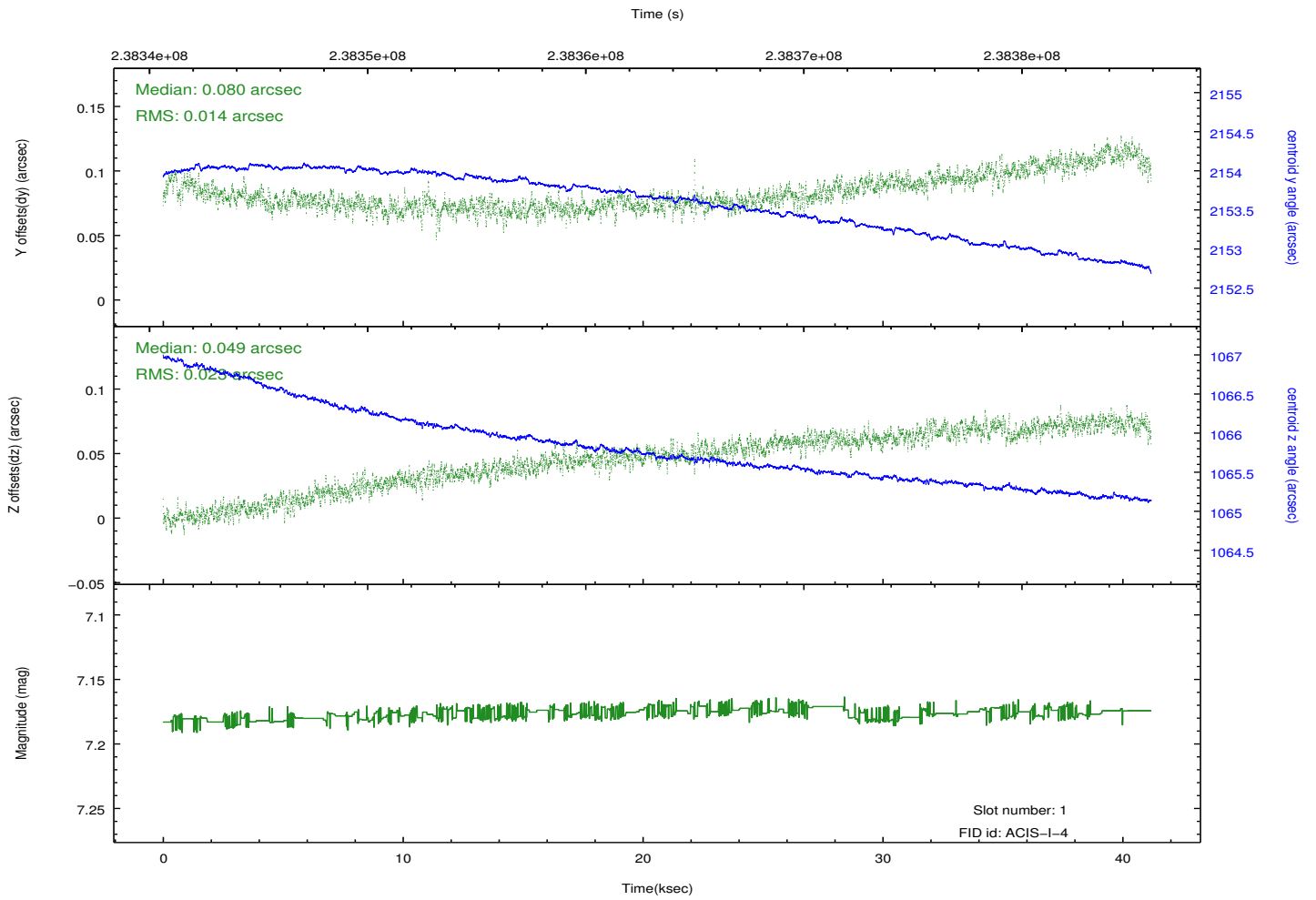
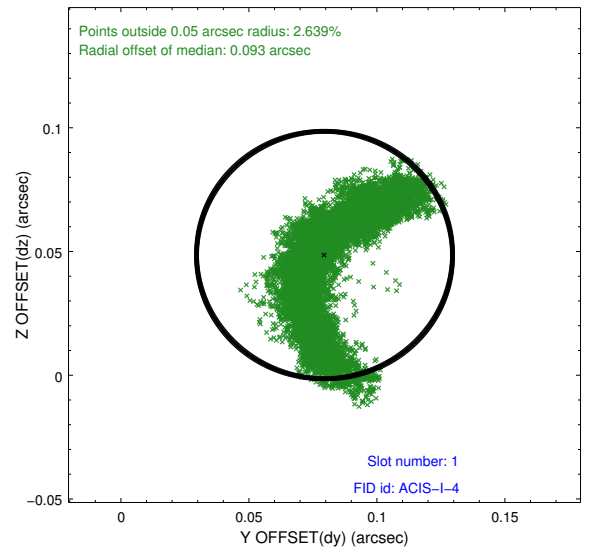
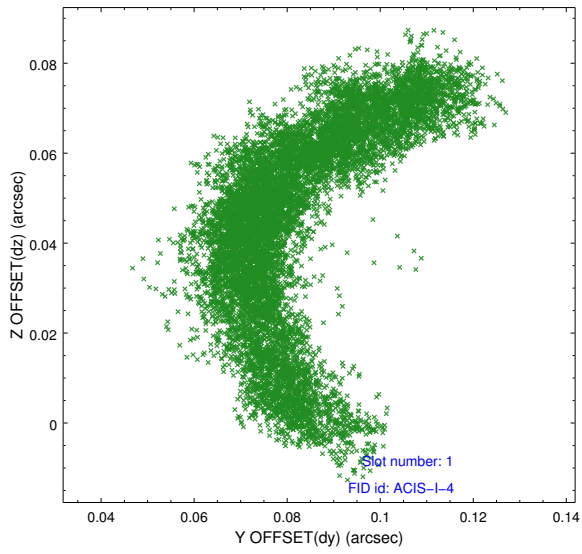


2.5 FID Slots

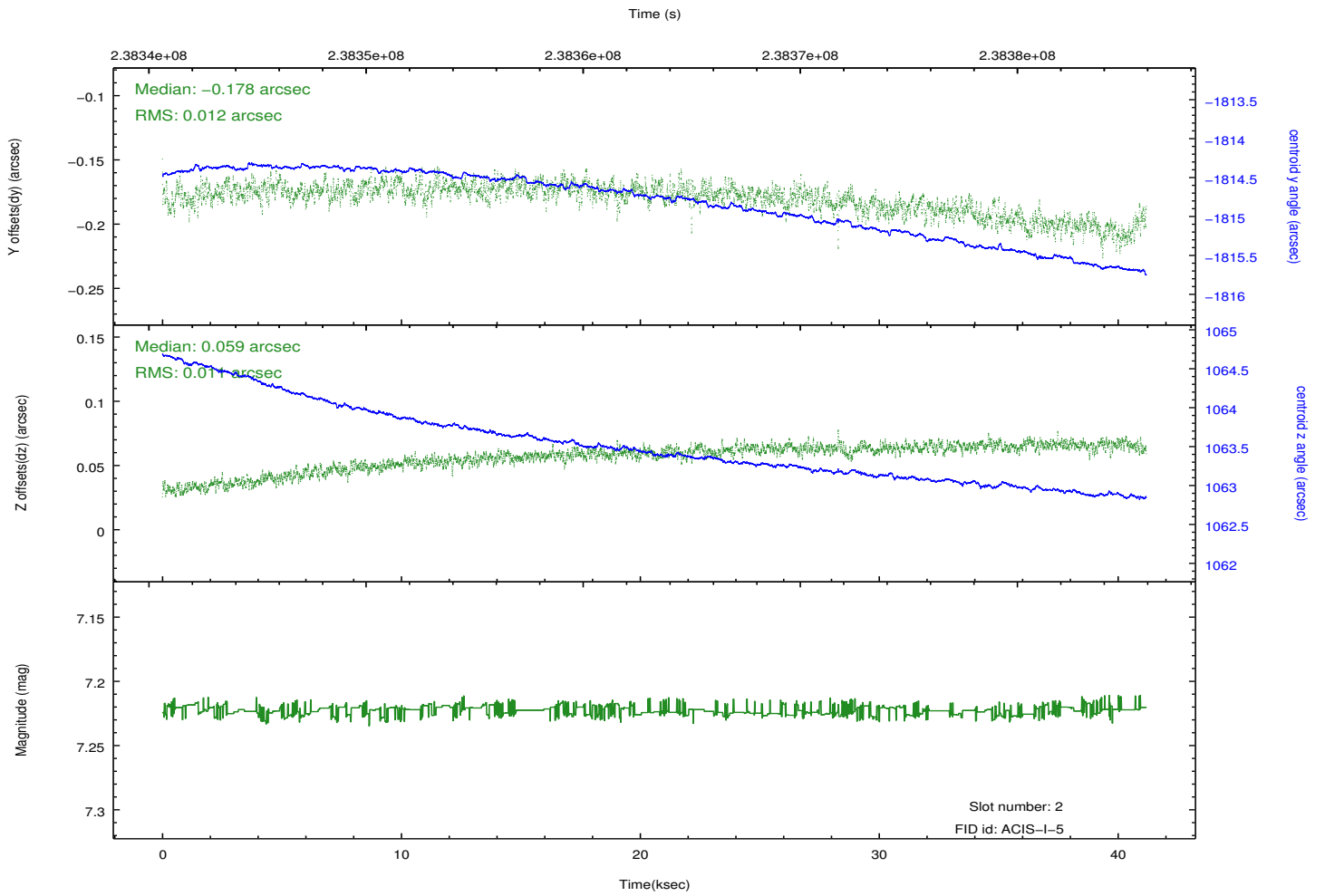
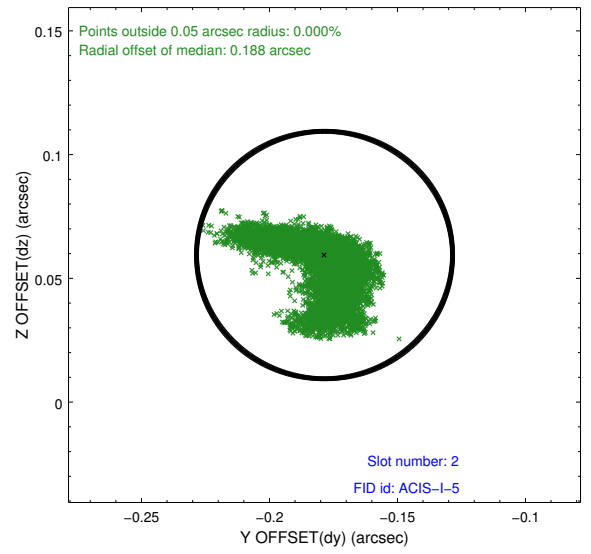
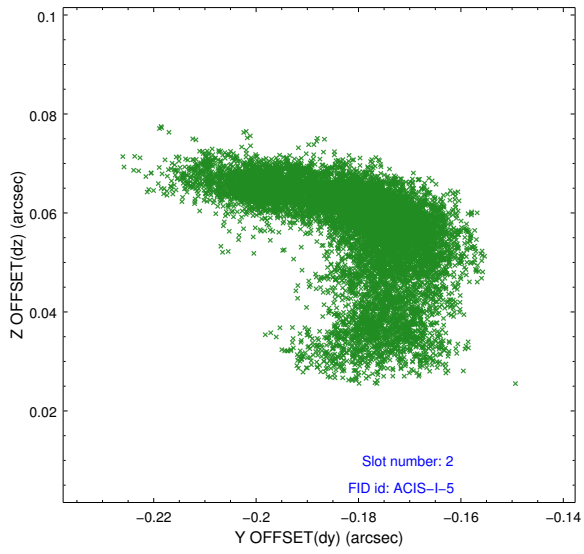
2.5.1 Slot 0



2.5.2 Slot 1



2.5.3 Slot 2



A Summary

A.1 Status

V&V Scientist	Jen Lauer
V&V Date (YYYY-MM-DD)	2013.01.23
V&V Edition	1
V&V Disposition and Status	OK
V&V Charge Time	41.02399

A.2 Comments