

# V&V Reference Report

## L2 ASCDS Version : 8.4.5

Observation 4546 - L2 Version 4  
Chandra X-Ray Center

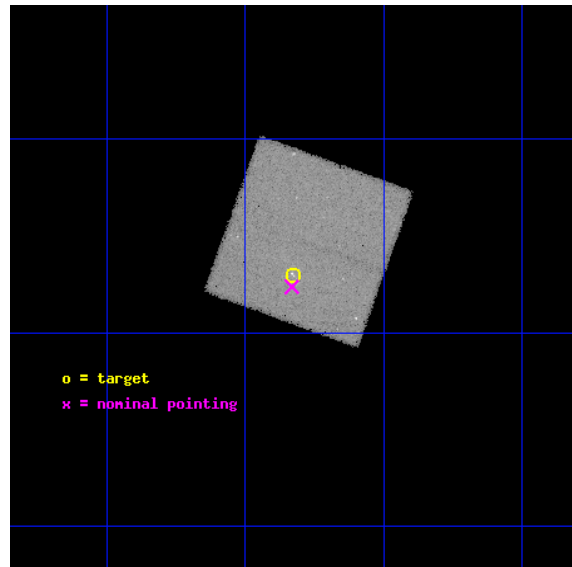
L2 Processing Date : Nov 10 2012

## Contents

<b>1</b>	<b>Front</b>	<b>2</b>
<b>2</b>	<b>OBI</b>	<b>3</b>
2.1	OBI . . . . .	3
2.1.1	Images . . . . .	3
2.1.2	Bias . . . . .	3
2.1.3	Parameters . . . . .	4
2.1.4	Events . . . . .	4
2.2	Compared Parameters . . . . .	5
2.3	Aspect . . . . .	6
2.4	Star Slots . . . . .	9
2.4.1	Slot 3 . . . . .	9
2.4.2	Slot 4 . . . . .	10
2.4.3	Slot 5 . . . . .	11
2.4.4	Slot 6 . . . . .	12
2.5	FID Slots . . . . .	13
2.5.1	Slot 0 . . . . .	13
2.5.2	Slot 1 . . . . .	14
2.5.3	Slot 2 . . . . .	15
<b>A</b>	<b>Summary</b>	<b>16</b>
A.1	Status . . . . .	16
A.2	Comments . . . . .	16

# 1 Front

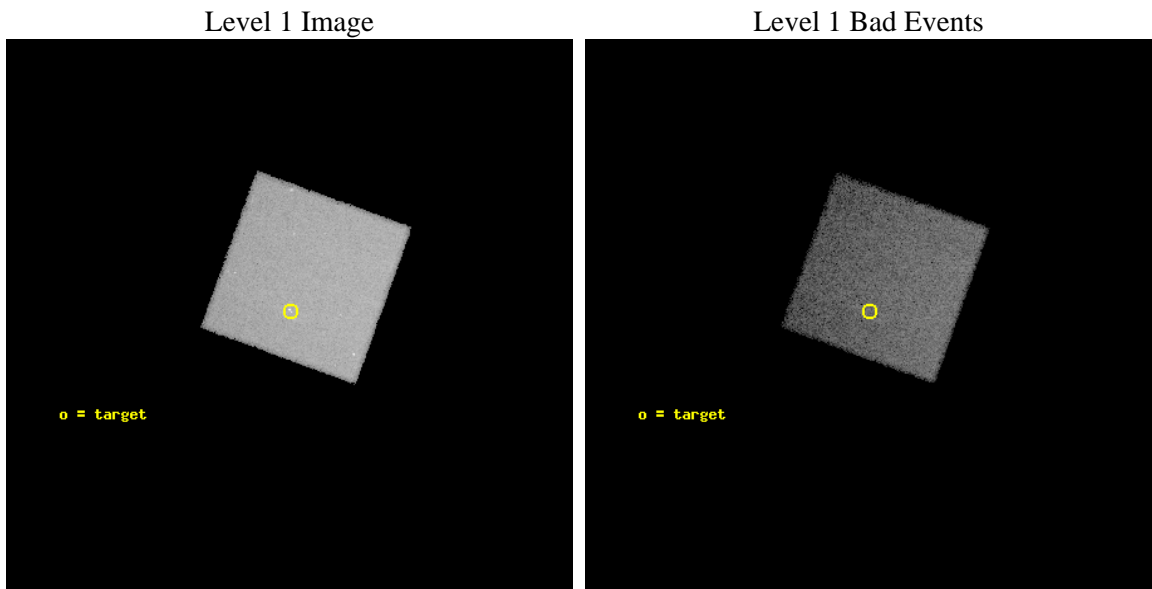
seq_num	300140	Sequence number
obs_id	4546	Observation id
title	X-ray jets in Symbiotics Stars	Proposal title
observer	Dr. Edwin Kellogg	Principal investigator
object	R Aqr	Source name
dtcycle	0	&#160
cycle	P	events from which exps? Prim/Second/Both
ra_targ	355.95625	Observer's specified target RA [deg]
dec_targ	-15.2845	Observer's specified target Dec [deg]
ra_nom	355.95795018085	Nominal RA [deg]
dec_nom	-15.294039532633	Nominal Dec [deg]
roll_nom	289.86577438582	Nominal Roll [deg]
revision	4	Processing version of data
ontime	37023.0	Sum of GTIs [s]
livetime	36523.360429327	Livetime [s]
ontime7	37023.0	Sum of GTIs [s]
l2events	134725	Number of level 2 events



## 2 OBI

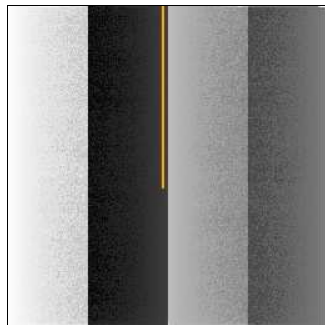
### 2.1 OBI

#### 2.1.1 Images



#### 2.1.2 Bias

Chip 7



### 2.1.3 Parameters

obi_num	0	Obi number	sched_exp_time	37000.000000	[s] Scheduled observation exposure time
ascdsver	8.4.5	Processing system revision	ontime	37023.0	Sum of GTIs [s]
caldbver	4.5.2	&#160	ontime7	37023.0	Sum of GTIs [s]
date	2012-11-10T04:04:54	Date and time of file creation	l1events	334434	Number of level 1 events
revision	4	Processing version of data			

### 2.1.4 Events

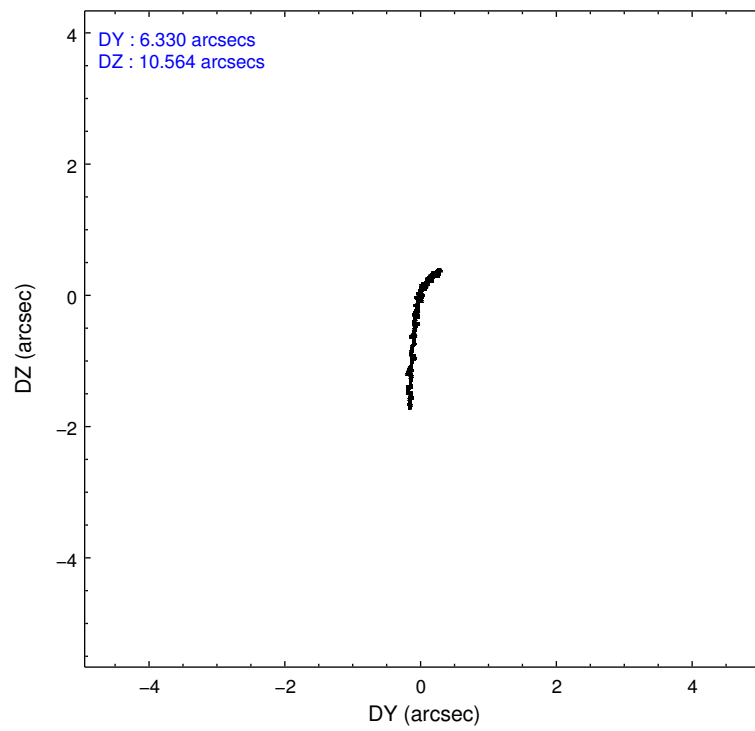
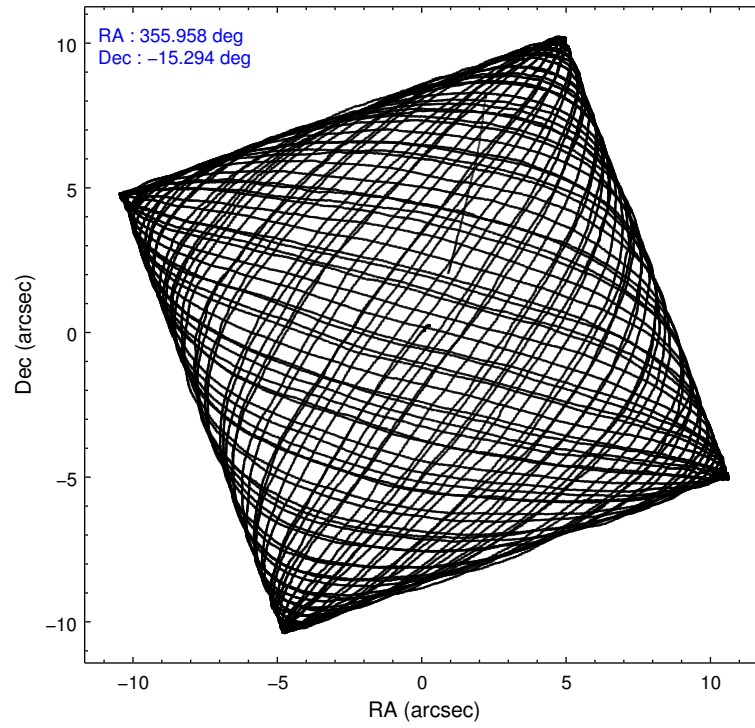
	<b>ccd 7</b>
level 1 events	334434
rejected events	196588
rejected %	58%

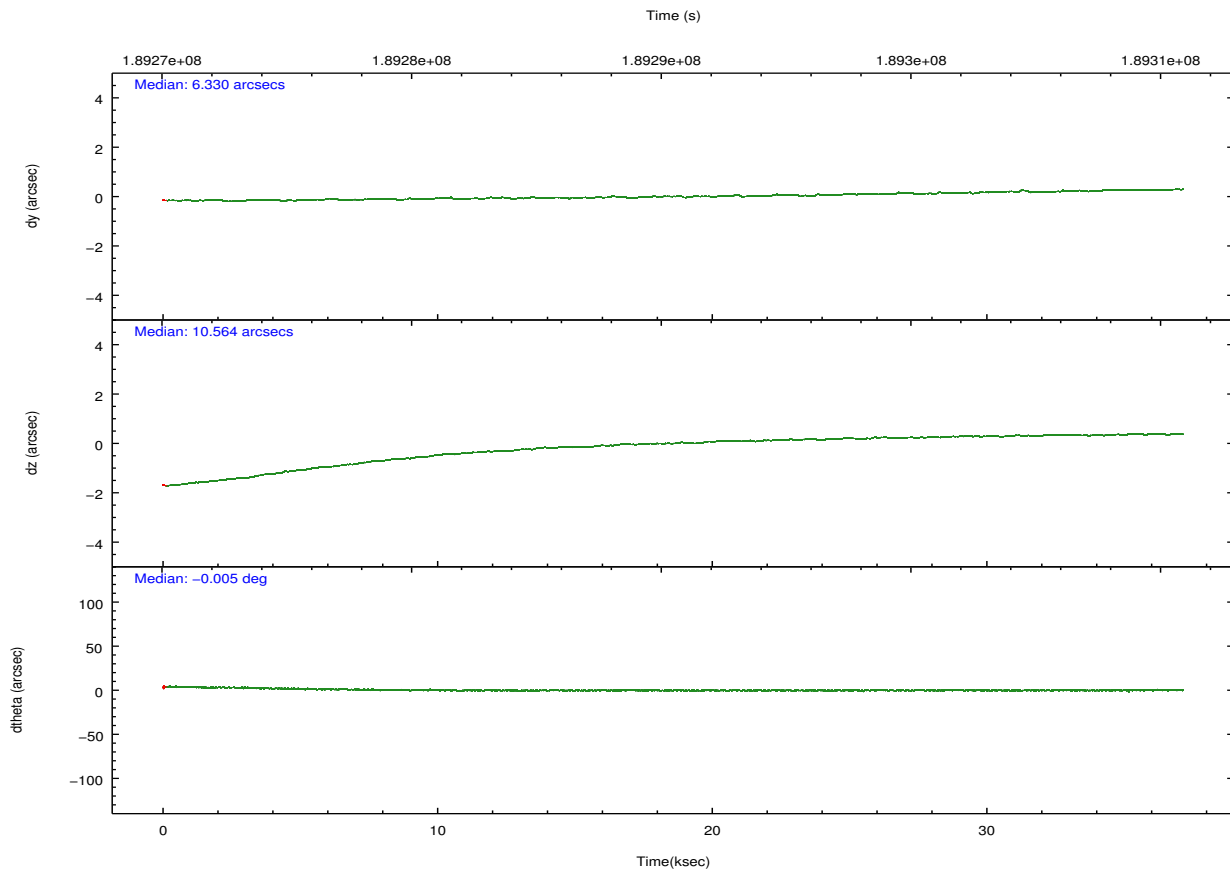
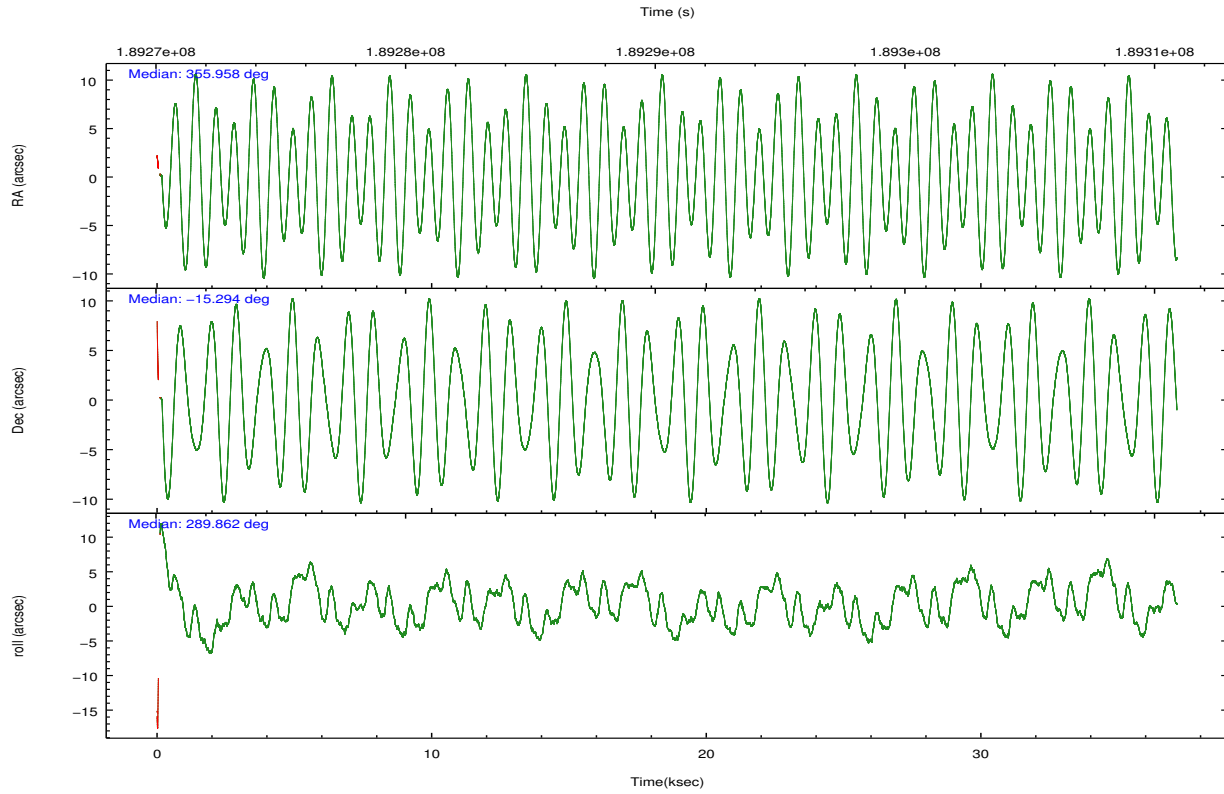
	<b>ccd 7</b>
grade 0 events	14386
	4%
grade 1 events	292
	0%
grade 2 events	28062
	8%
grade 3 events	12746
	3%
grade 4 events	12783
	3%
grade 5 events	31444
	9%
grade 6 events	75739
	22%
grade 7 events	158982
	47%

## 2.2 Compared Parameters

Parameter	Planned	Actual	Parameter	Planned	Actual
Instrument	ACIS	ACIS	Obspar format version number	7	7
Detector	ACIS-7	ACIS-7	Obspar file type	PREDICTED	ACTUAL
Grating	NONE	NONE	Obspar update status	NONE	UPDATED
Data mode	VFAINT	VFAINT	Number of optional ACIS chips dropped	0	0
Observation mode	POINTING	POINTING	On-chip summing requested	N	N
[deg] Pointing RA	355.936124	355.9579501808475	Subarray requested	NONE	NONE
[deg] Pointing Dec	-15.276765	-15.29403953263323	Alternating exposures requested	N	N
[deg] Pointing Roll	289.703403	289.8657743858188	[s] Primary exposure time	0.000000	3
[mm] SIM focus pos	-0.684267	-0.6828225247311905			
[mm] SIM defocus	0	0.001444936568705701			
[mm] SIM translation stage pos	-190.132523	-190.1400660498719			
[mm] SIM translation stage offset	0	0.00754346686406393			
[s] Observation start time (MET)	189272043.184000	189270340.74656			
Observation start date	2003-12-31T15:32:59	2003-12-31T15:05:40			
[s] Observation end time (MET)	189309043.184000	189310814.41082			
Observation end date	2004-01-01T01:49:39	2004-01-01T02:20:14			
Read mode	TIMED	TIMED			

## 2.3 Aspect



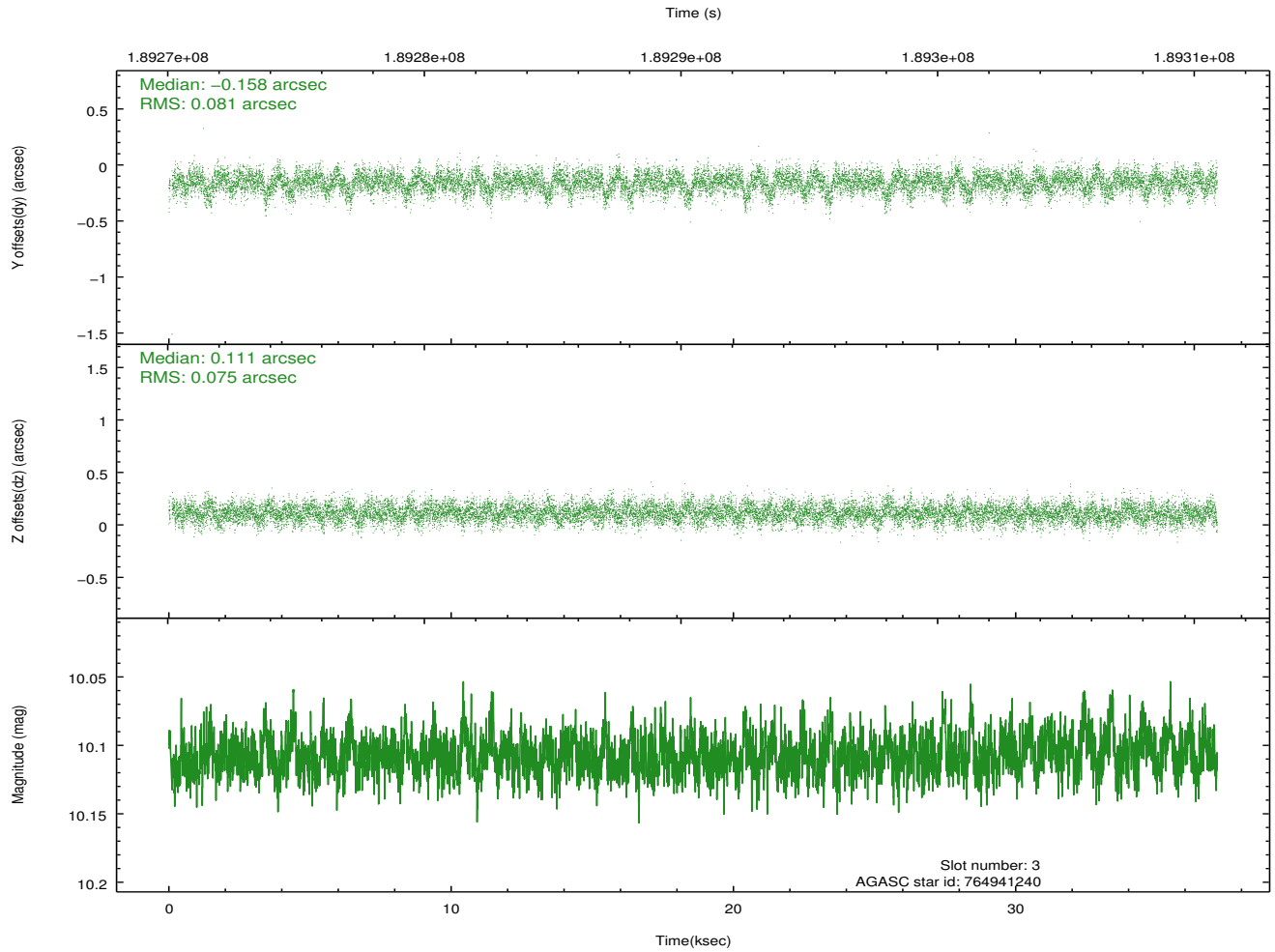
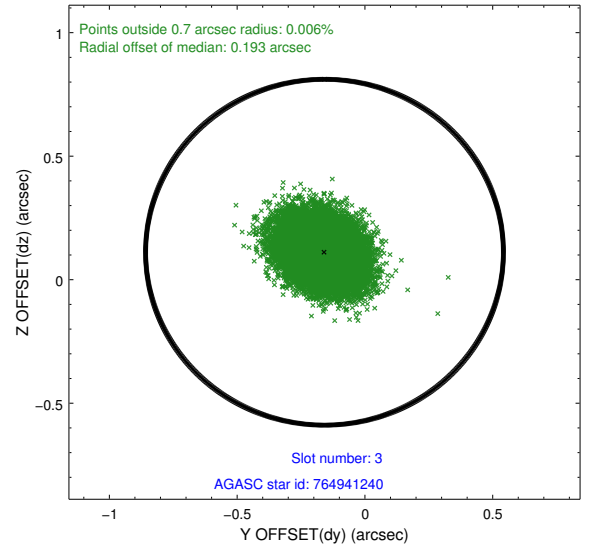
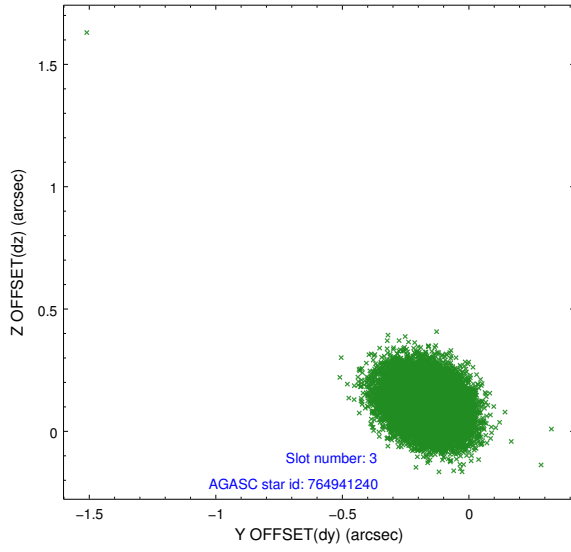


### Slot Statistics

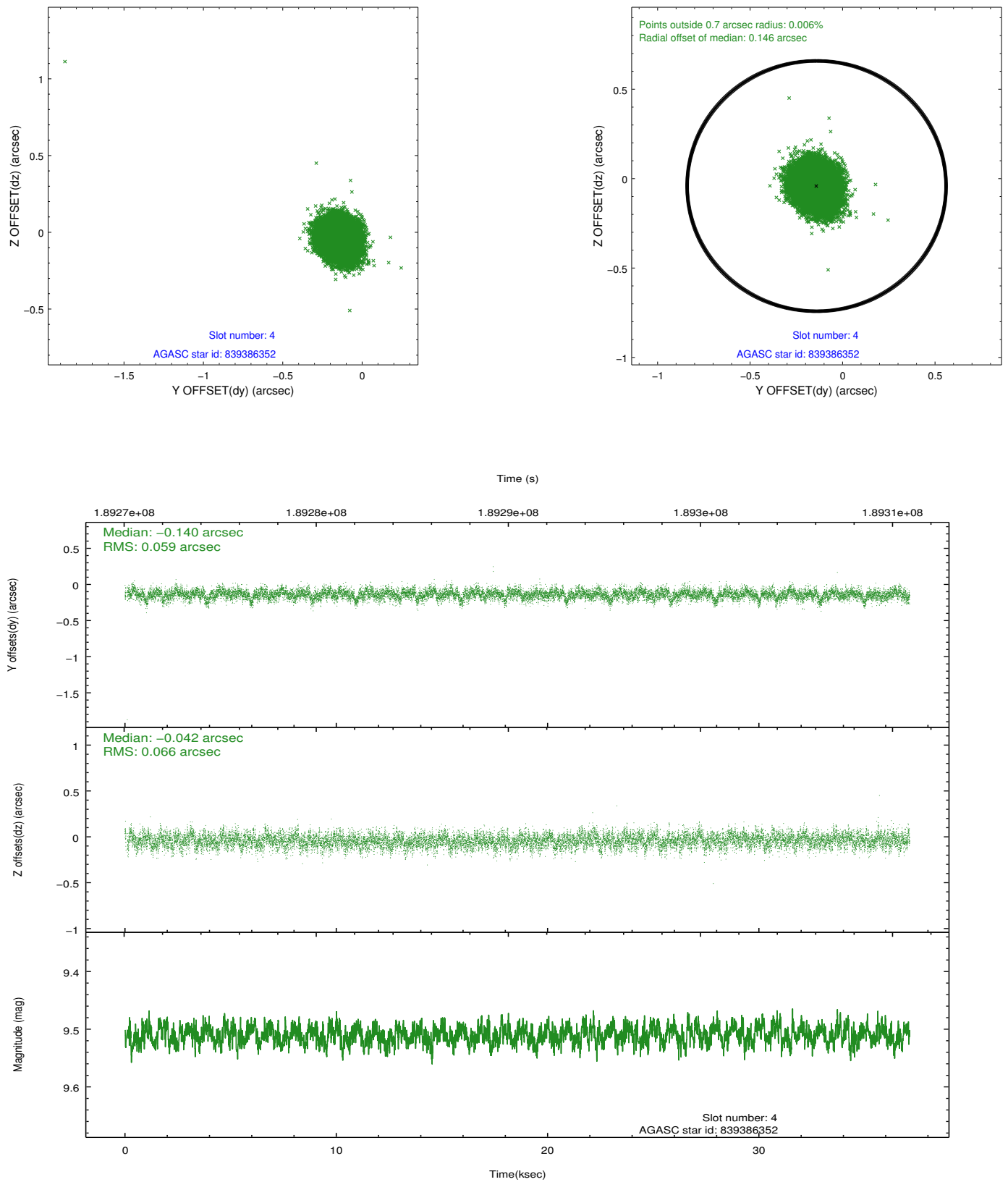
	status	id	mag	n_pts	med_dy	med_dz	dr1
	FID	ACIS-S-2	7.10	9043	-0.056	-0.016	0.011
	FID	ACIS-S-4	7.20	9043	0.076	0.032	0.009
	FID	ACIS-S-5	7.23	9043	-0.050	-0.007	0.010
	GUIDE	764941240	10.11	18077	-0.158	0.111	0.116
	GUIDE	839386352	9.51	18068	-0.140	-0.042	0.092
	GUIDE	839386400	9.27	18068	0.079	0.017	0.096
	GUIDE	839390608	9.75	18073	0.223	-0.090	0.106
0.000	0.000	0.000	0.000000	0.000000	0.00	0.00	

## 2.4 Star Slots

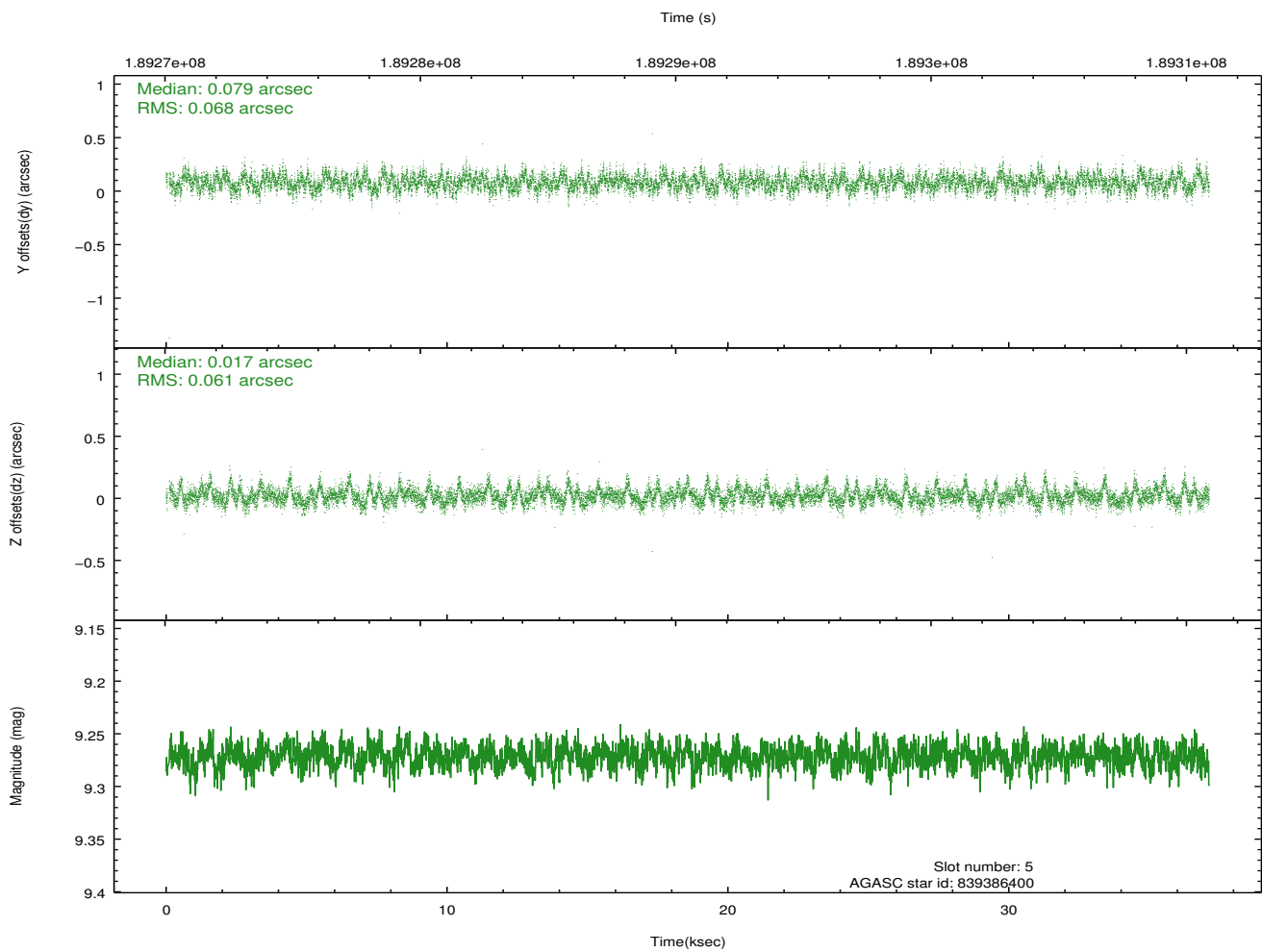
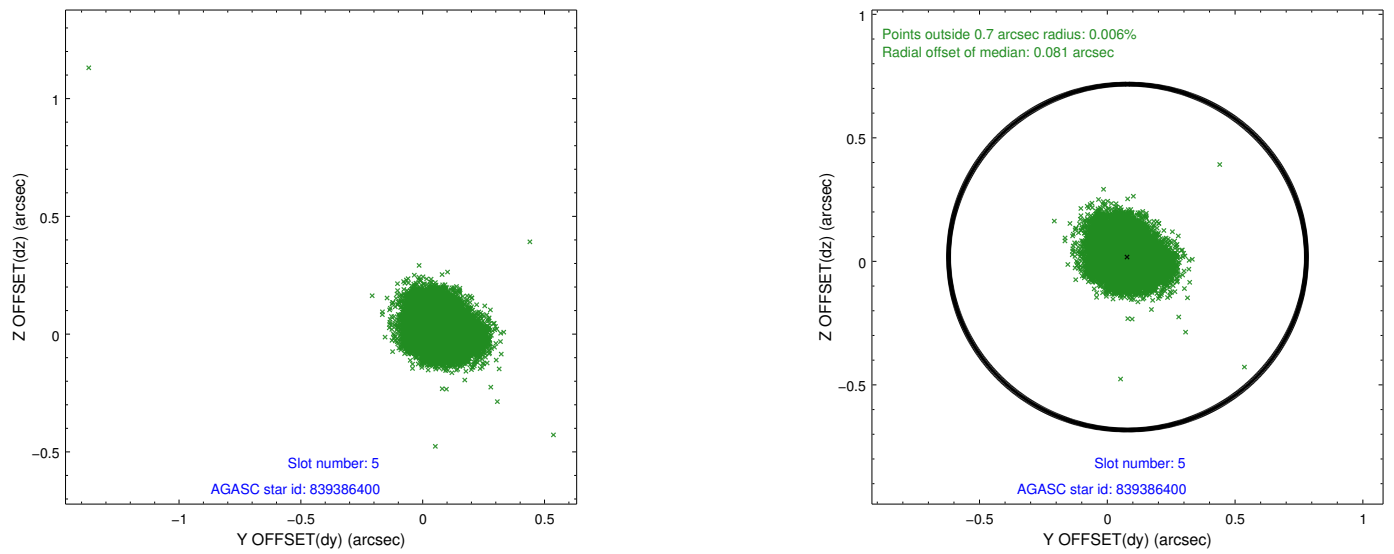
### 2.4.1 Slot 3



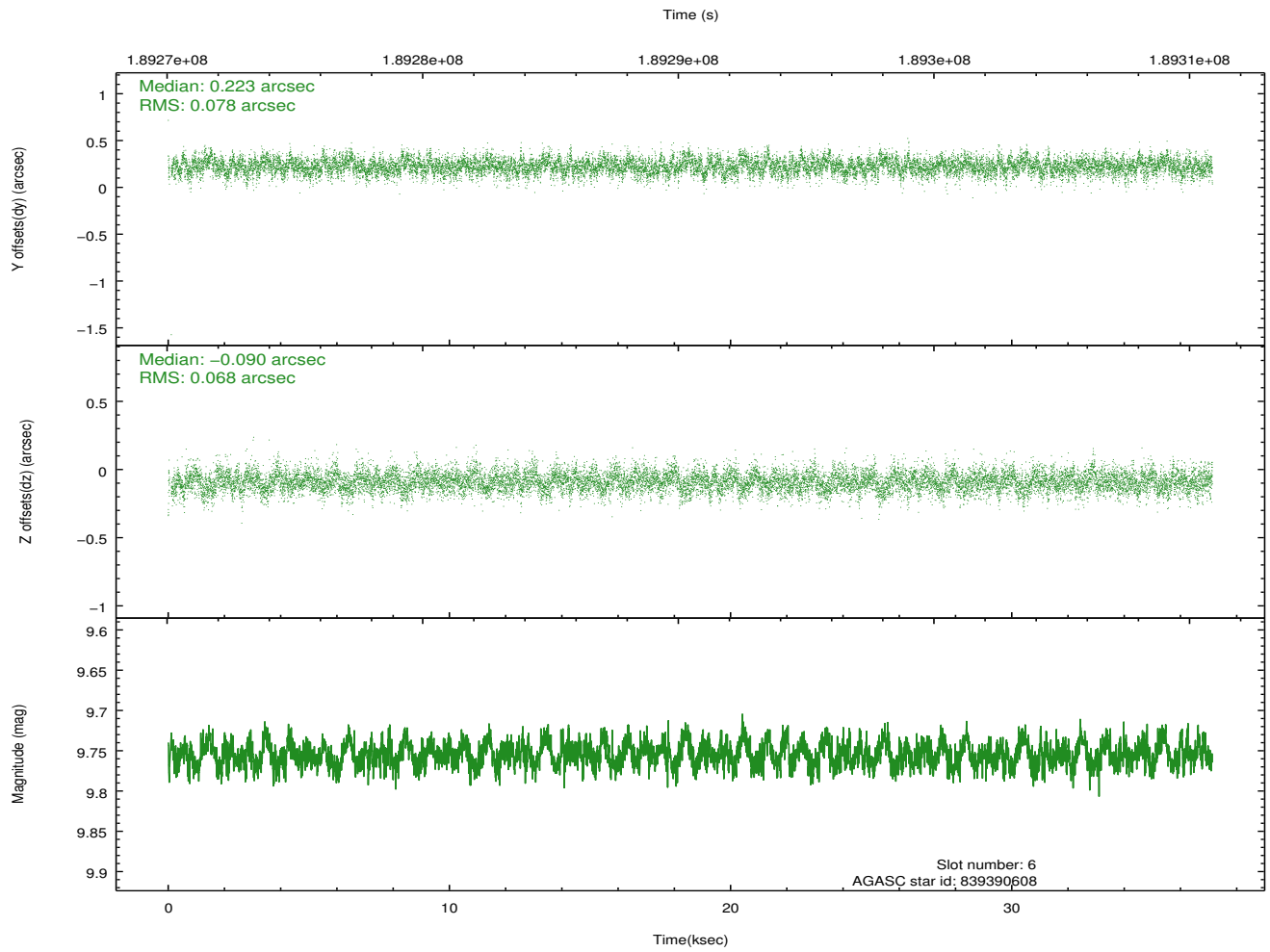
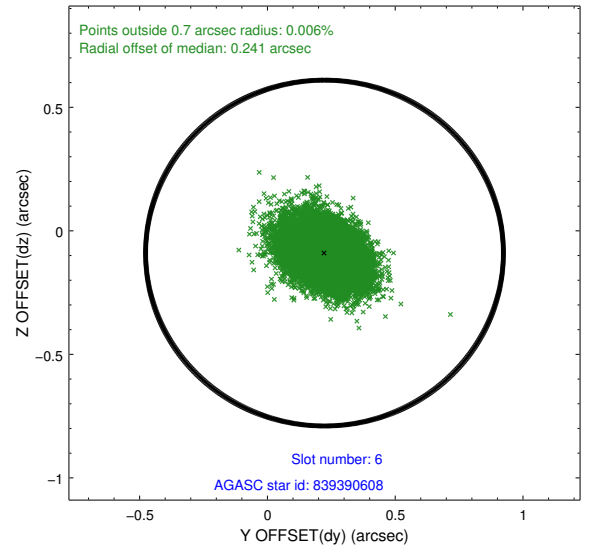
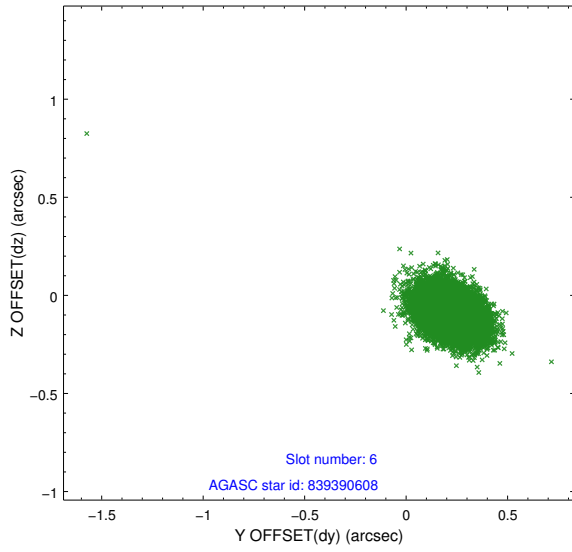
## 2.4.2 Slot 4



### 2.4.3 Slot 5

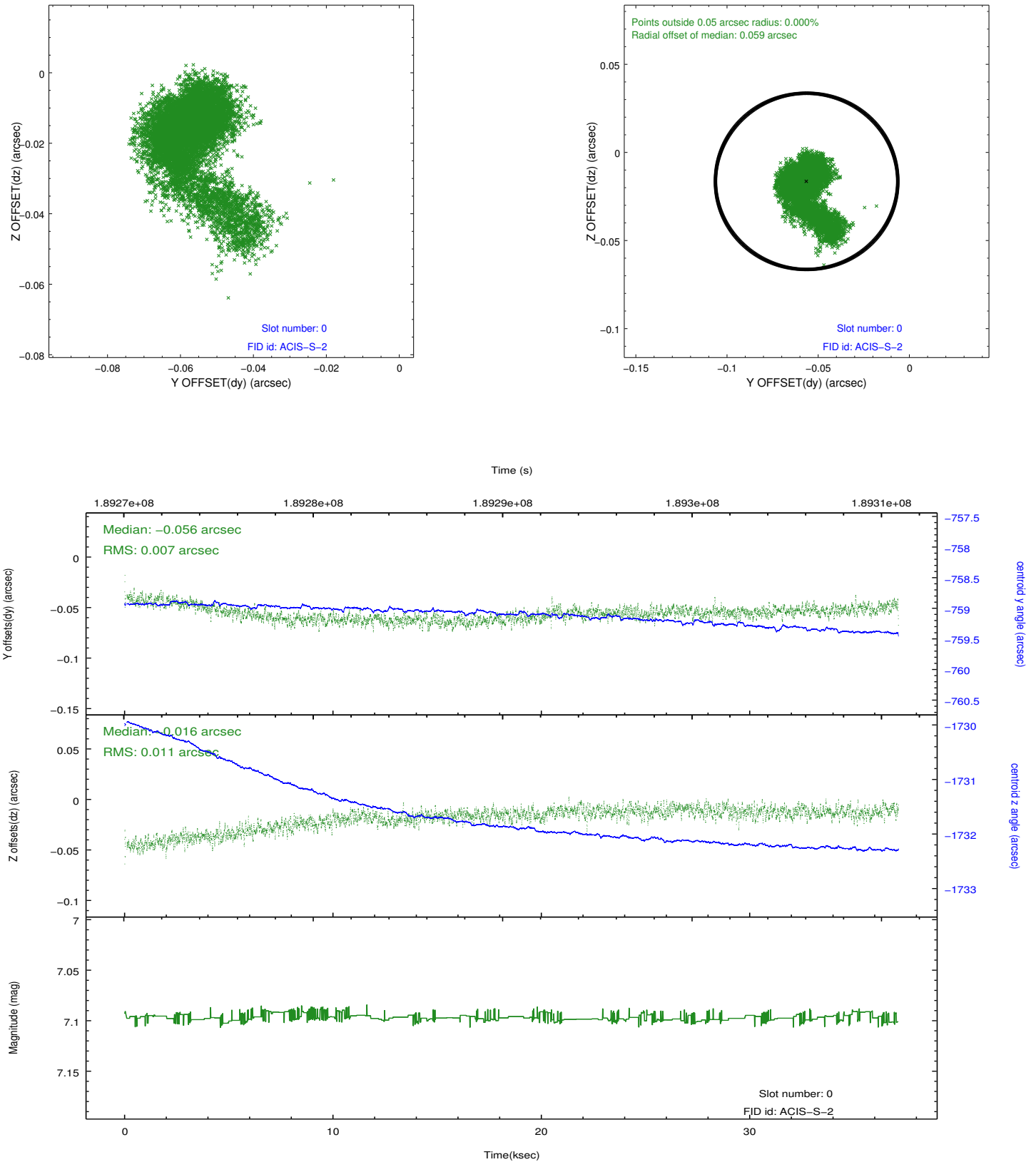


### 2.4.4 Slot 6

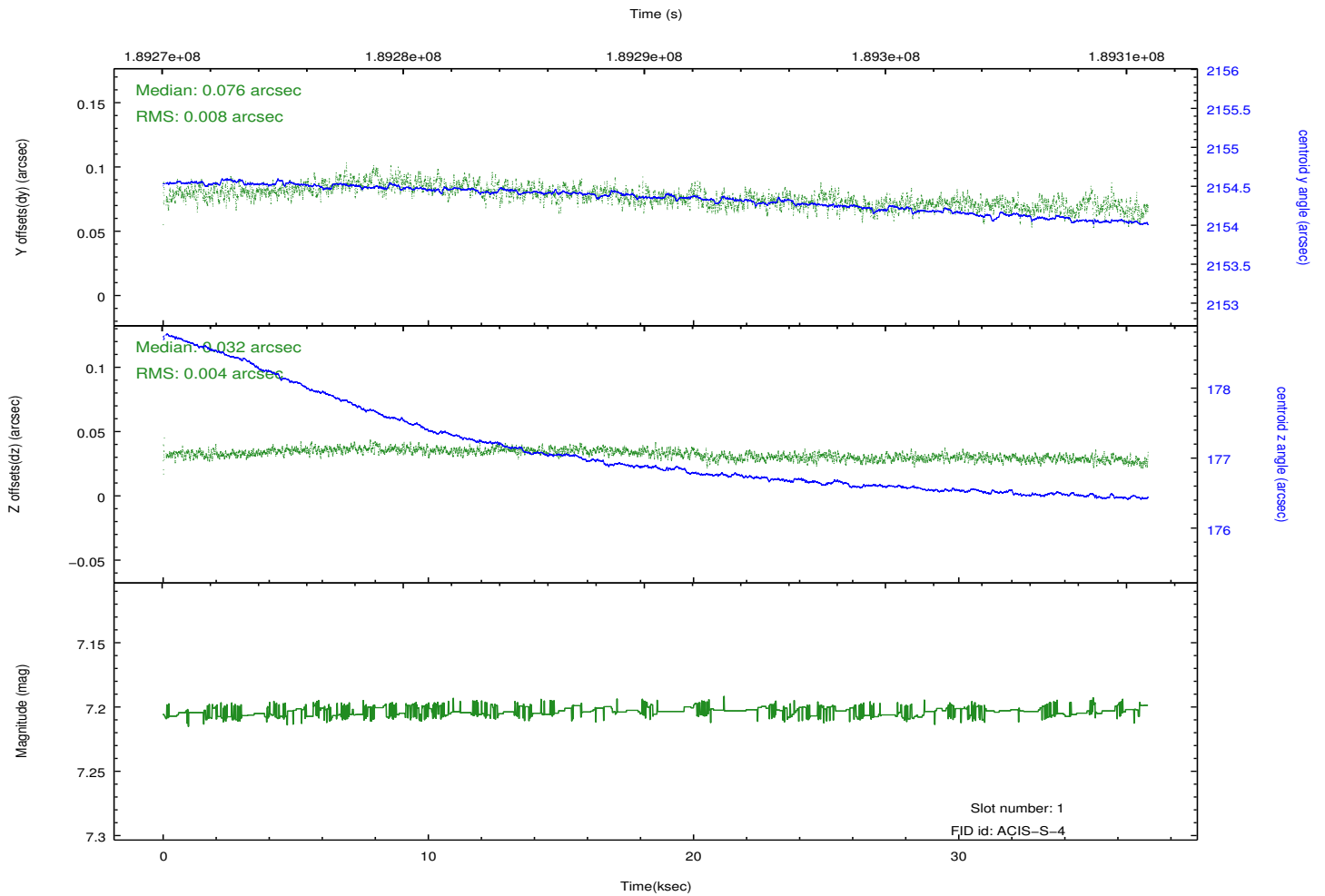
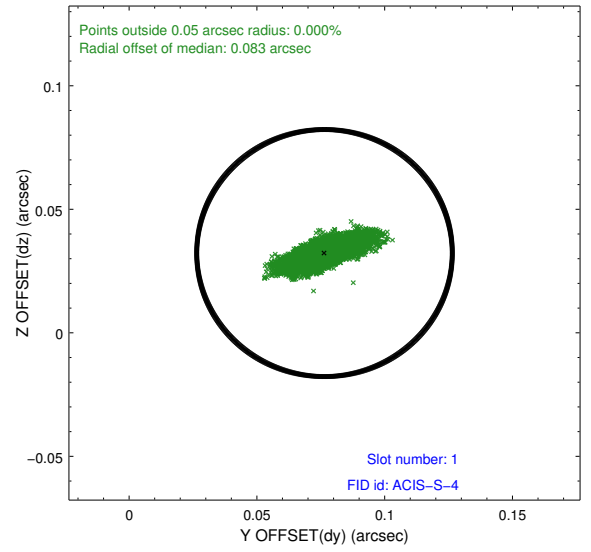
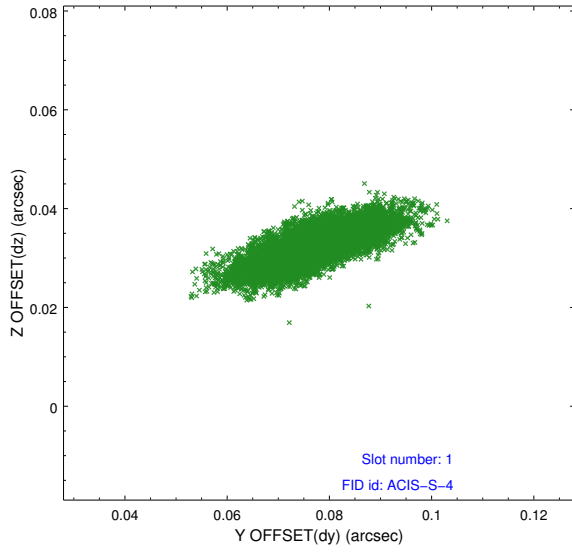


## 2.5 FID Slots

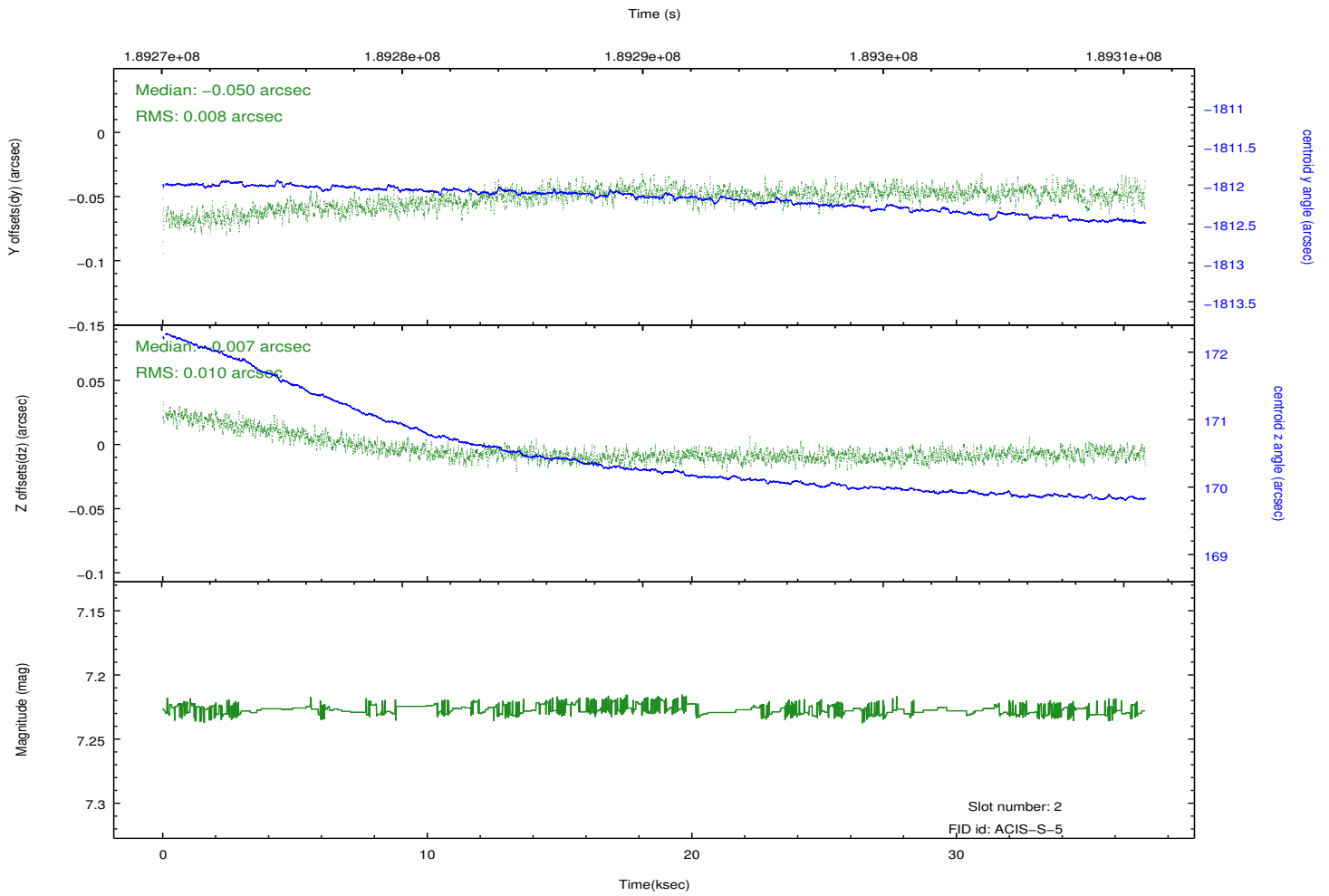
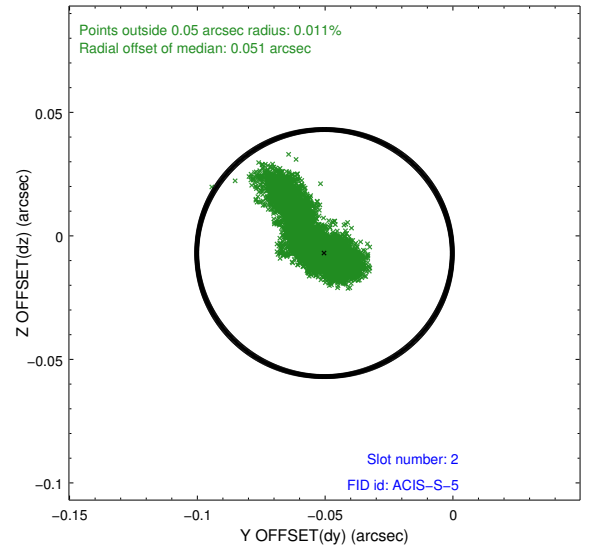
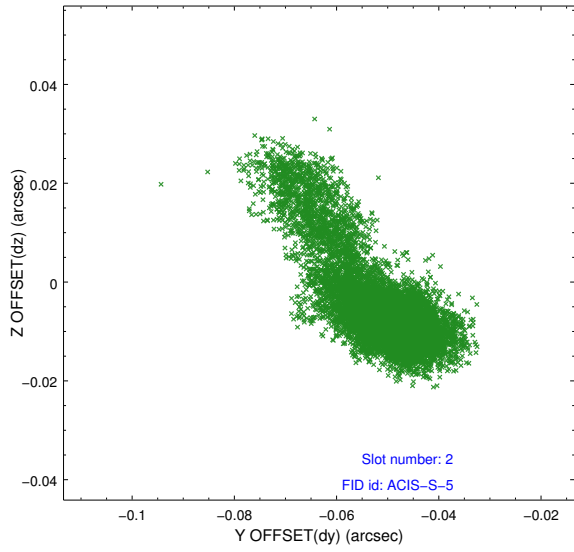
### 2.5.1 Slot 0



## 2.5.2 Slot 1



### 2.5.3 Slot 2



# A Summary

## A.1 Status

V&V Scientist	Jen Lauer
V&V Date (YYYY-MM-DD)	2012.12.04
V&V Edition	1
V&V Disposition and Status	OK
V&V Charge Time	37.023

## A.2 Comments

Window preference met.