

# V&V Reference Report

## L2 ASCDS Version : 8.4.5

Observation 4586 - L2 Version 3  
Chandra X-Ray Center

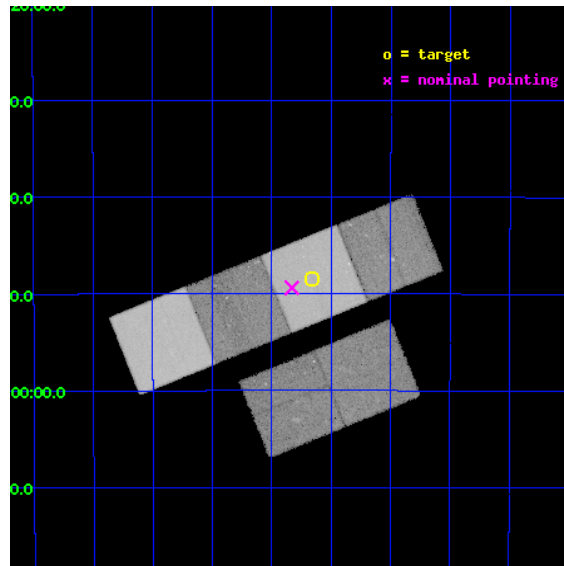
L2 Processing Date : Dec 3 2012

## Contents

<b>1</b>	<b>Front</b>	<b>2</b>
<b>2</b>	<b>OBI</b>	<b>3</b>
2.1	OBI . . . . .	3
2.1.1	Images . . . . .	3
2.1.2	Bias . . . . .	3
2.1.3	Parameters . . . . .	4
2.1.4	Events . . . . .	4
2.2	Compared Parameters . . . . .	5
2.3	Aspect . . . . .	6
2.4	Star Slots . . . . .	9
2.4.1	Slot 3 . . . . .	9
2.4.2	Slot 4 . . . . .	10
2.4.3	Slot 5 . . . . .	11
2.4.4	Slot 6 . . . . .	12
2.4.5	Slot 7 . . . . .	13
2.5	FID Slots . . . . .	14
2.5.1	Slot 0 . . . . .	14
2.5.2	Slot 1 . . . . .	15
2.5.3	Slot 2 . . . . .	16
<b>A</b>	<b>Summary</b>	<b>17</b>
A.1	Status . . . . .	17
A.2	Comments . . . . .	17

# 1 Front

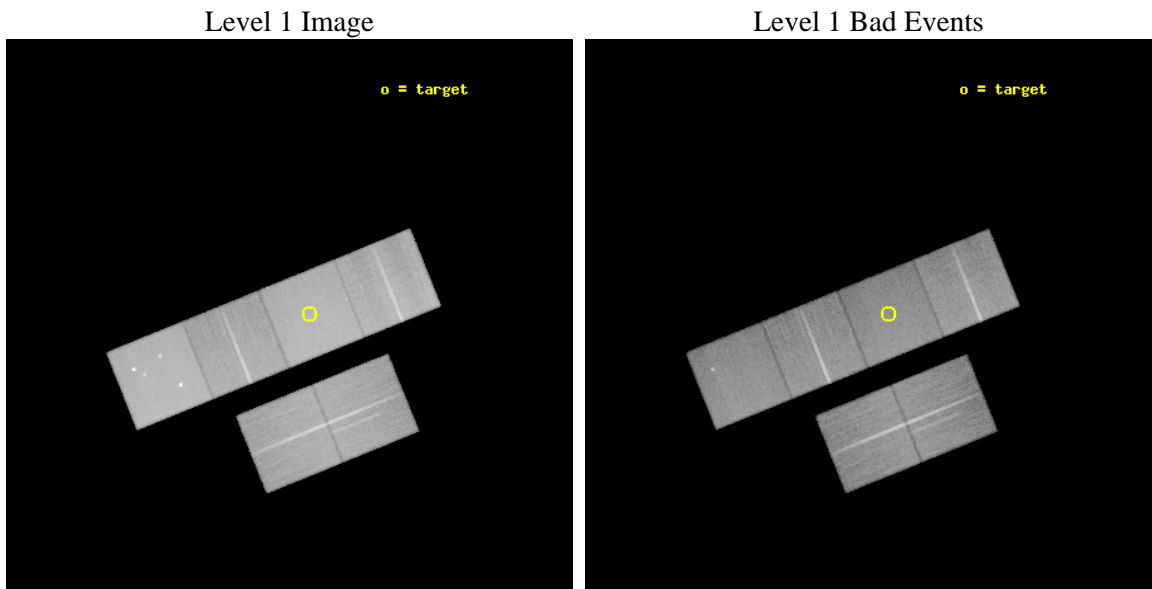
seq_num	400368	Sequence number
obs_id	4586	Observation id
title	The Evolution of the fossil Jets associated with 4U1755-33	Proposa
observer	Dr Lorella Angelini	Principal investigator
object	4U1755-33	Source name
dtycycle	0	&#160
cycle	P	events from which exps? Prim/Second/Both
ra_targ	269.666667	Observer's specified target RA [deg]
dec_targ	-33.8075	Observer's specified target Dec [deg]
ra_nom	269.70755529472	Nominal RA [deg]
dec_nom	-33.823151665651	Nominal Dec [deg]
roll_nom	337.98534710802	Nominal Roll [deg]
revision	3	Processing version of data
ontime	44956.799832523	Sum of GTIs [s]
livetime	44387.529763309	Livetime [s]
ontime2	44956.799832523	Sum of GTIs [s]
ontime3	44953.558832318	Sum of GTIs [s]
ontime5	44956.799832523	Sum of GTIs [s]
ontime6	44956.799832523	Sum of GTIs [s]
ontime7	44956.799832523	Sum of GTIs [s]
ontime8	44956.799832523	Sum of GTIs [s]
l2events	562211	Number of level 2 events



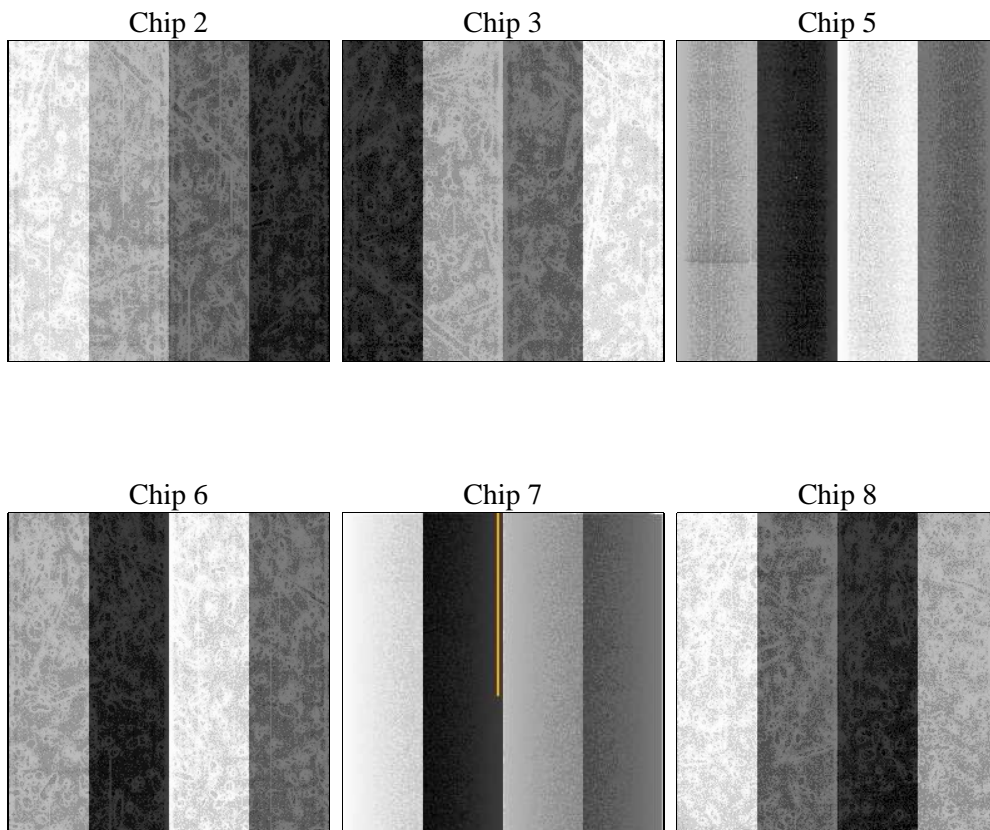
## 2 OBI

### 2.1 OBI

#### 2.1.1 Images



#### 2.1.2 Bias



### 2.1.3 Parameters

obi_num	0	Obi number	sched_exp_time	45000.000000	[s] Scheduled observation exposure time
ascdsver	8.4.5	Processing system revision	ontime	44956.799832523	Sum of GTIs [s]
caldbver	4.5.2	&#160	ontime2	44956.799832523	Sum of GTIs [s]
date	2012-12-03T07:40:44	Date and time of file creation	ontime3	44953.558832318	Sum of GTIs [s]
revision	3	Processing version of data	ontime5	44956.799832523	Sum of GTIs [s]
			ontime6	44956.799832523	Sum of GTIs [s]
			ontime7	44956.799832523	Sum of GTIs [s]
			ontime8	44956.799832523	Sum of GTIs [s]
			l1events	2390172	Number of level 1 events

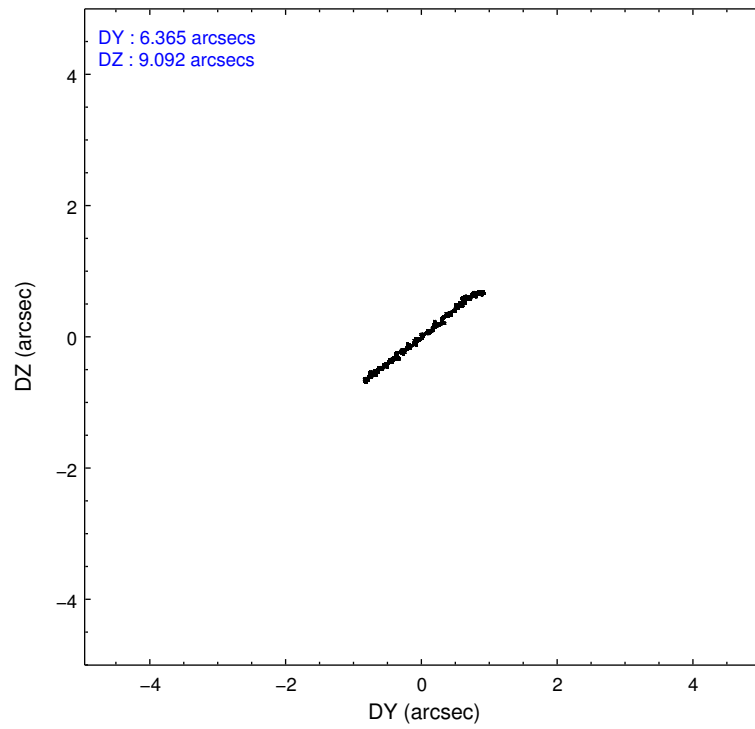
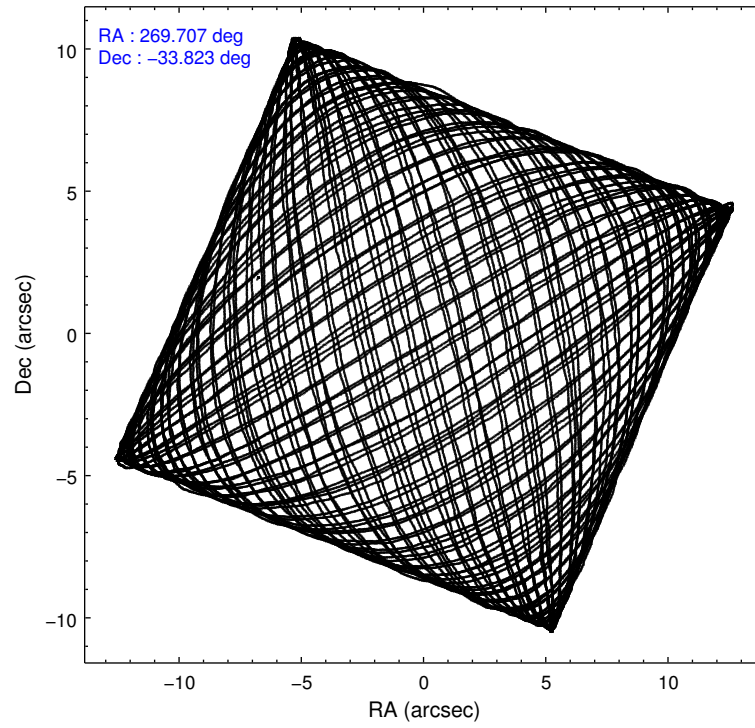
### 2.1.4 Events

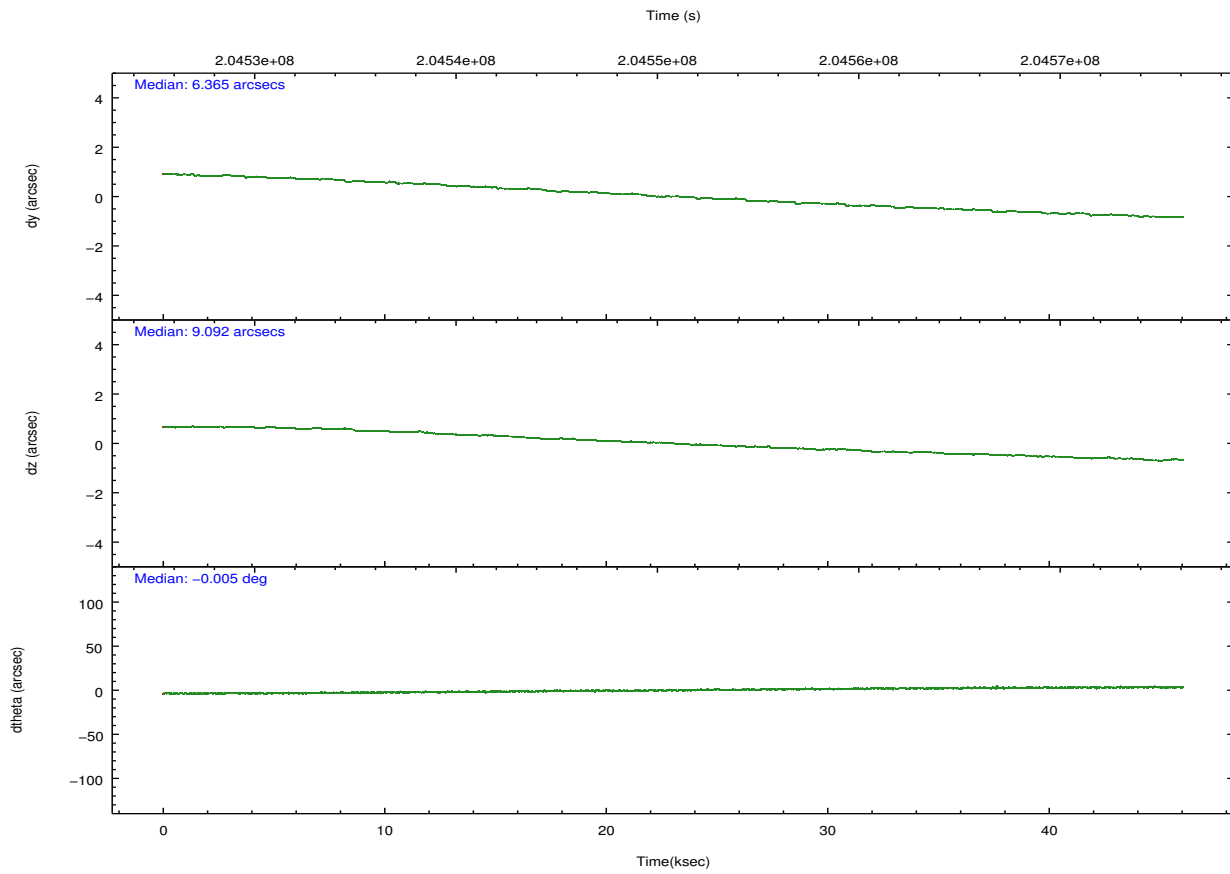
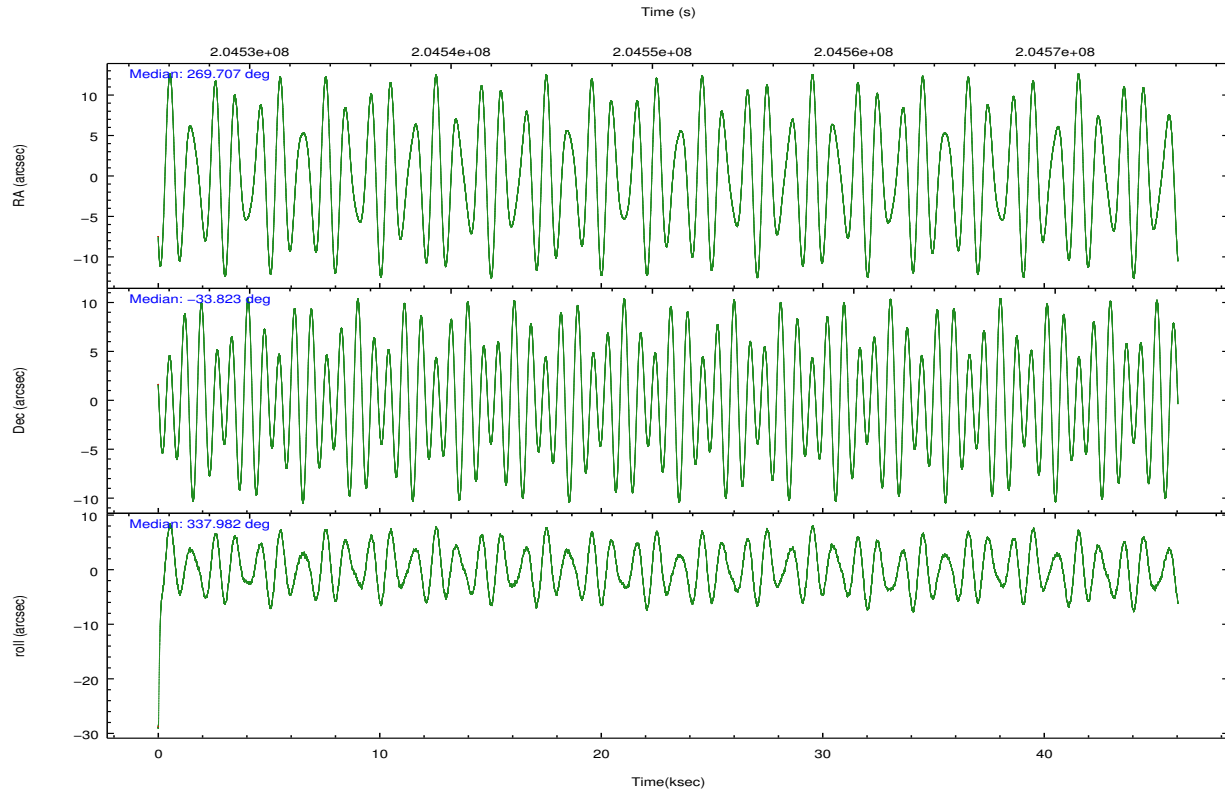
	ccd 2	ccd 3	ccd 5	ccd 6	ccd 7	ccd 8		ccd 2	ccd 3	ccd 5	ccd 6	ccd 7	ccd 8
level 1 events	342537	324797	505855	340363	456538	420082	grade 0 events	20495	20106	32160	19857	19557	32311
rejected events	299726	283126	268000	296238	262740	327229		5%	6%	6%	5%	4%	7%
rejected %	87%	87%	52%	87%	57%	77%	grade 1 events	221	192	1748	166	435	302
								0%	0%	0%	0%	0%	0%
							grade 2 events	8362	7457	67727	8474	39149	19616
								2%	2%	13%	2%	8%	4%
							grade 3 events	3892	3667	9528	3929	17603	9395
								1%	1%	1%	1%	3%	2%
							grade 4 events	3622	3835	9387	3888	17281	8819
								1%	1%	1%	1%	3%	2%
							grade 5 events	13192	14294	36762	15489	43062	19761
								3%	4%	7%	4%	9%	4%
							grade 6 events	6442	6610	119076	7980	100223	22746
								1%	2%	23%	2%	21%	5%
							grade 7 events	286311	268636	229467	280580	219228	307132
								83%	82%	45%	82%	48%	73%

## 2.2 Compared Parameters

Parameter	Planned	Actual	Parameter	Planned	Actual
Instrument	ACIS	ACIS	Obspar format version number	7	7
Detector	ACIS-235678	ACIS-235678	Obspar file type	PREDICTED	ACTUAL
Grating	NONE	NONE	Obspar update status	NONE	UPDATED
Data mode	FAINT	FAINT	Number of optional ACIS chips dropped	0	0
Observation mode	POINTING	POINTING	On-chip summing requested	N	N
[deg] Pointing RA	269.675151	269.7075552947242	Subarray requested	NONE	NONE
[deg] Pointing Dec	-33.827301	-33.82315166565139	Alternating exposures requested	N	N
[deg] Pointing Roll	337.810682	337.985347108019	[s] Primary exposure time	0.000000	3.2
[mm] SIM focus pos	-0.684267	-0.6828225247311905			
[mm] SIM defocus	0	0.001444936568705701			
[mm] SIM translation stage pos	-190.132523	-190.1400660498719			
[mm] SIM translation stage offset	0	0.00754346686406393			
[s] Observation start time (MET)	204528796.184000	204527407.4793			
Observation start date	2004-06-25T05:32:12	2004-06-25T05:10:07			
[s] Observation end time (MET)	204573796.184000	204575427.70642			
Observation end date	2004-06-25T18:02:12	2004-06-25T18:30:27			
Read mode	TIMED	TIMED			

## 2.3 Aspect



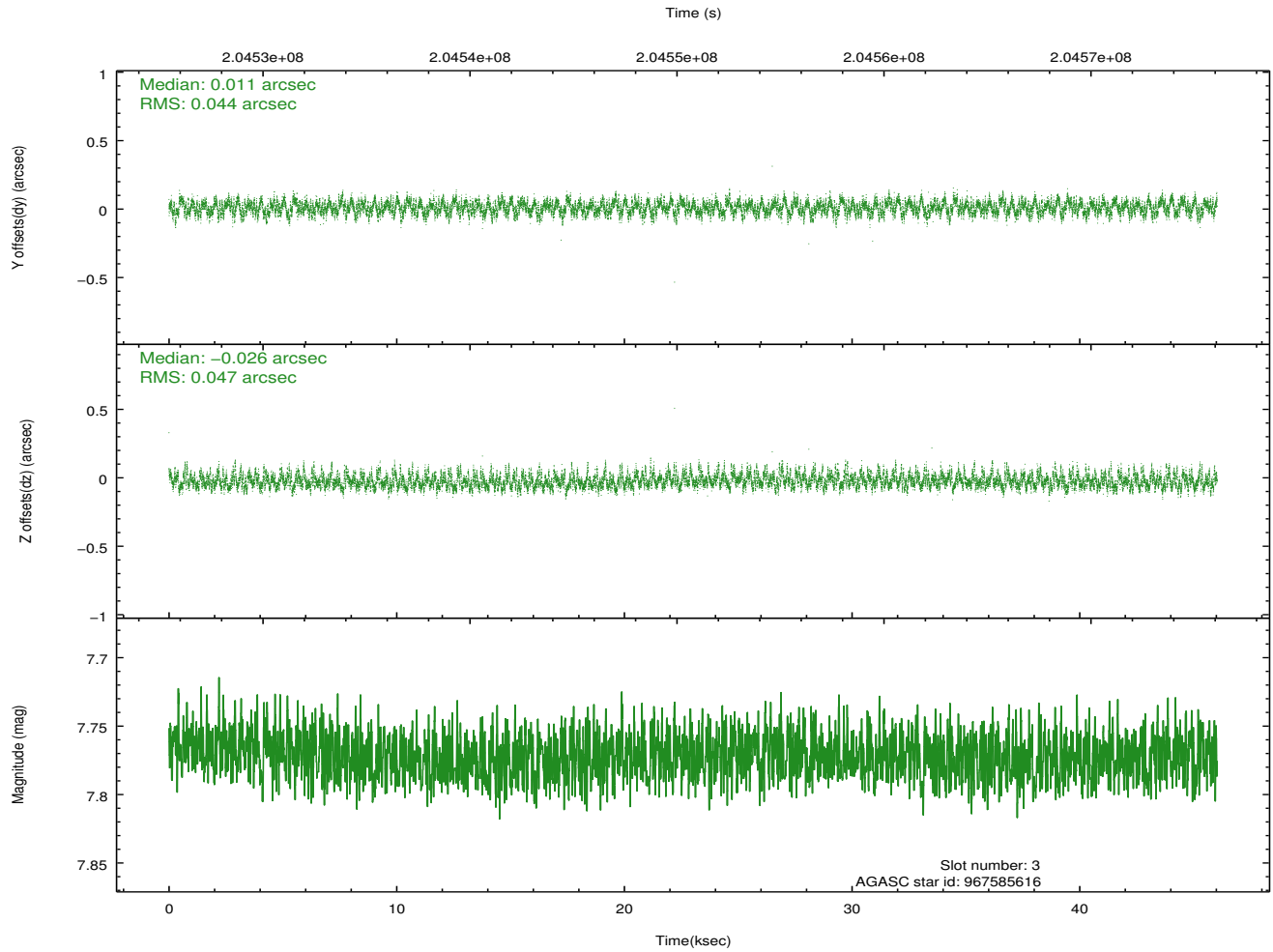
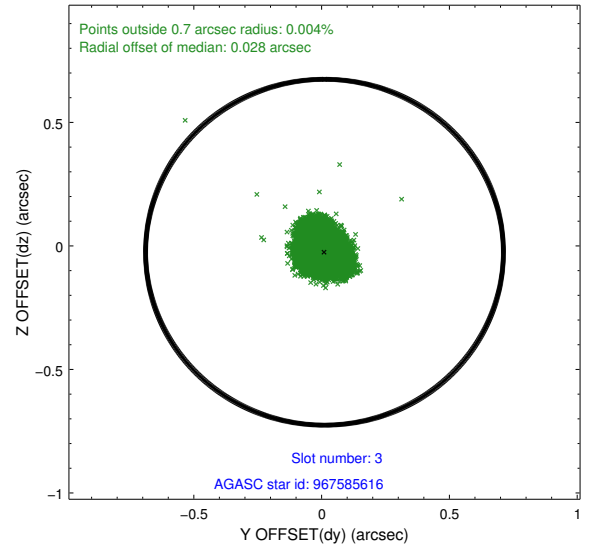
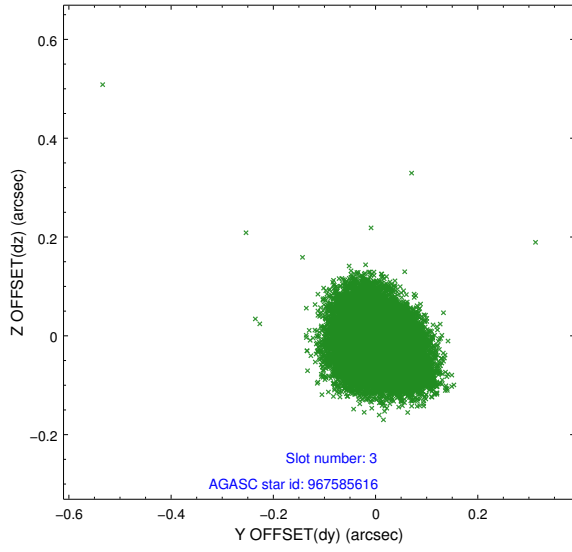


### Slot Statistics

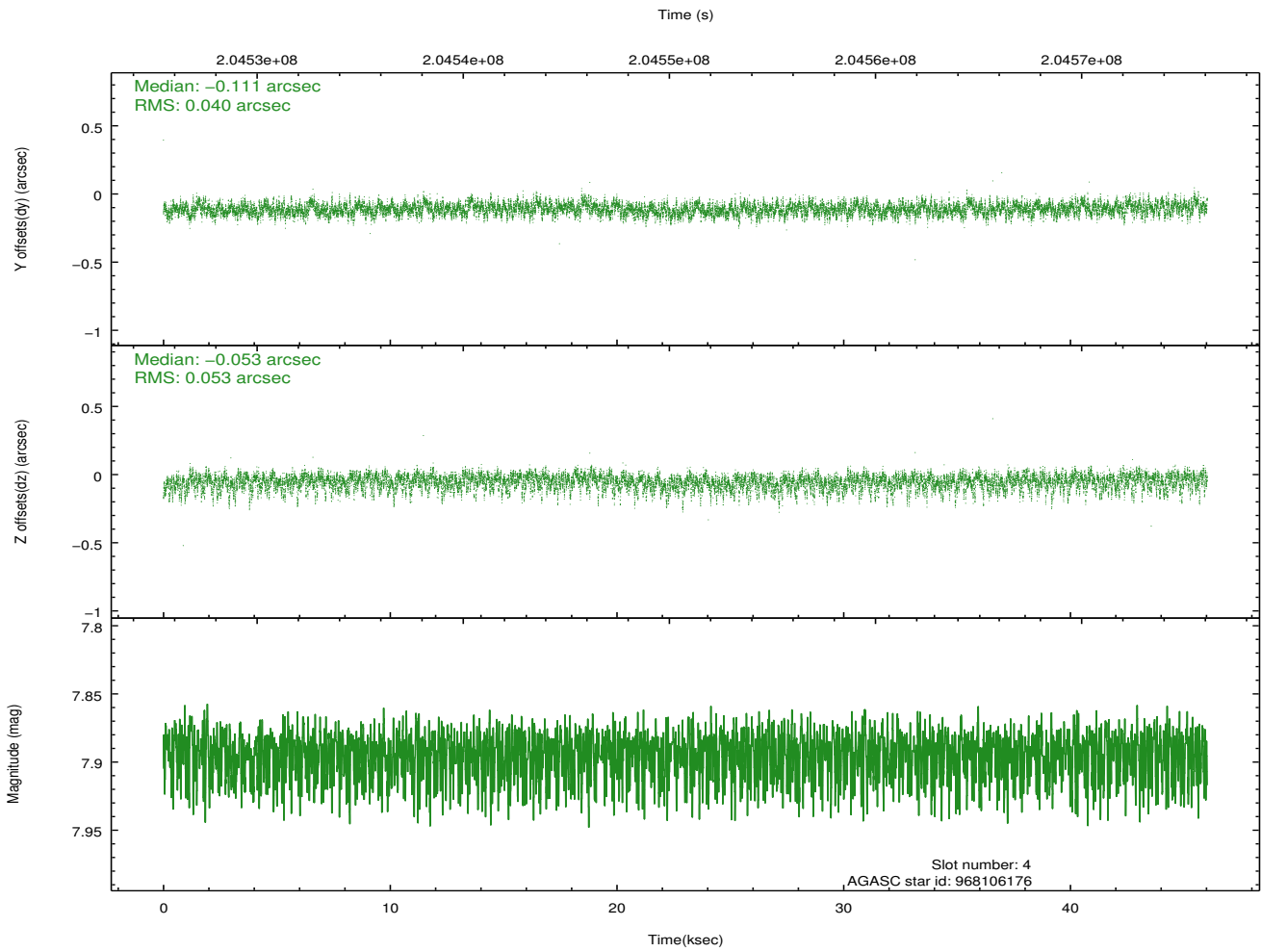
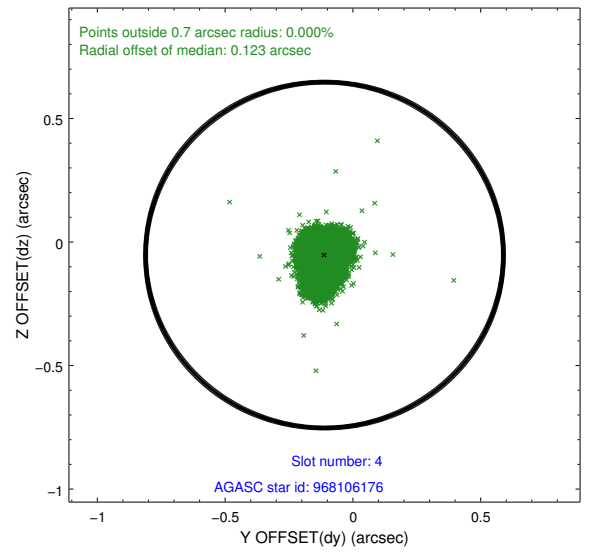
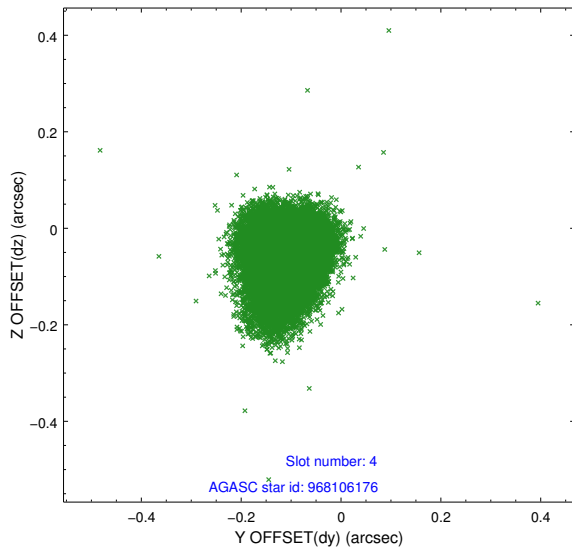
slot	status	id	mag	n_pts	med_dy	med_dz	dr1	dr2	ra	dec	mean_y	mean_z
0	FID	ACIS-S-1	7.18	11230	0.012	-0.019	0.010	0.017	0.000000	0.000000	936.90	-1725.99
1	FID	ACIS-S-4	7.21	11230	0.061	0.012	0.010	0.017	0.000000	0.000000	2154.37	178.19
2	FID	ACIS-S-5	7.23	11230	-0.101	0.020	0.011	0.021	0.000000	0.000000	-1812.07	171.82
3	GUIDE	967585616	7.77	22458	0.011	-0.026	0.068	0.110	269.985133	-33.408329	293.61	1747.15
4	GUIDE	968106176	7.89	22460	-0.111	-0.053	0.069	0.117	268.813315	-34.235568	-1815.74	-2339.72
5	GUIDE	968110016	8.38	22451	0.011	-0.019	0.079	0.127	268.984118	-34.286625	-1275.88	-2313.98
6	GUIDE	969294768	9.16	22445	0.039	0.091	0.086	0.142	270.651813	-33.552989	2345.56	2008.37
7	GUIDE	969804960	8.36	22457	0.051	0.016	0.058	0.094	270.573437	-33.767997	2413.30	1202.26

## 2.4 Star Slots

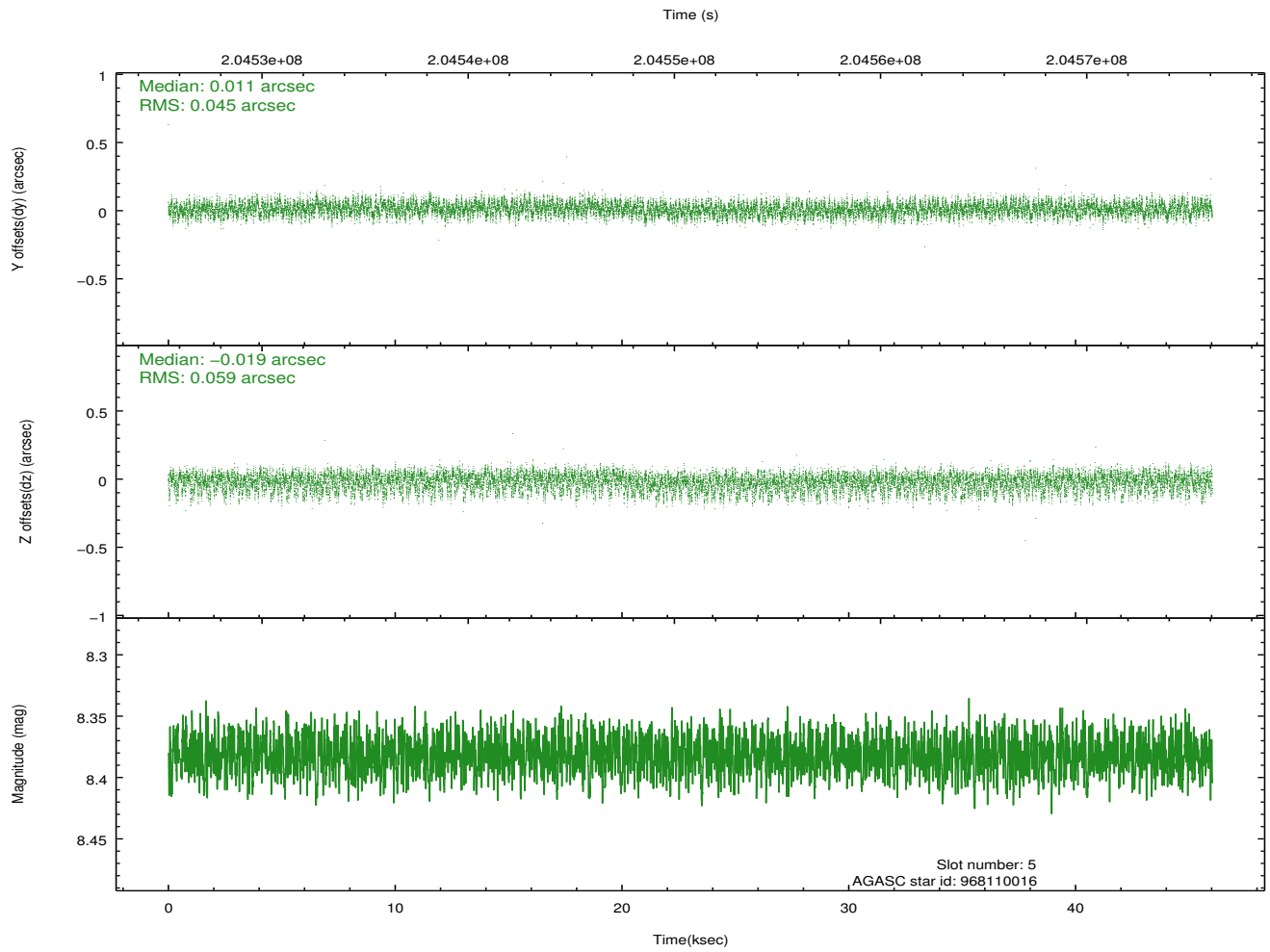
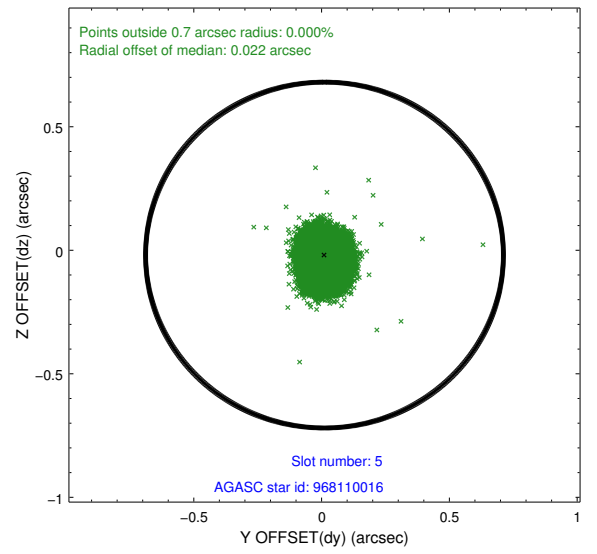
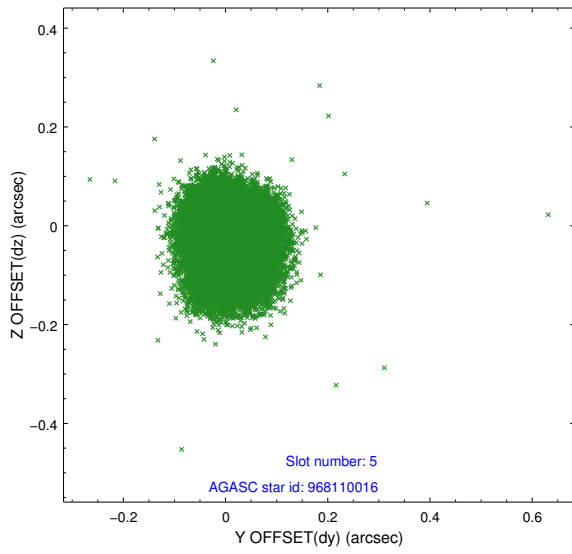
### 2.4.1 Slot 3



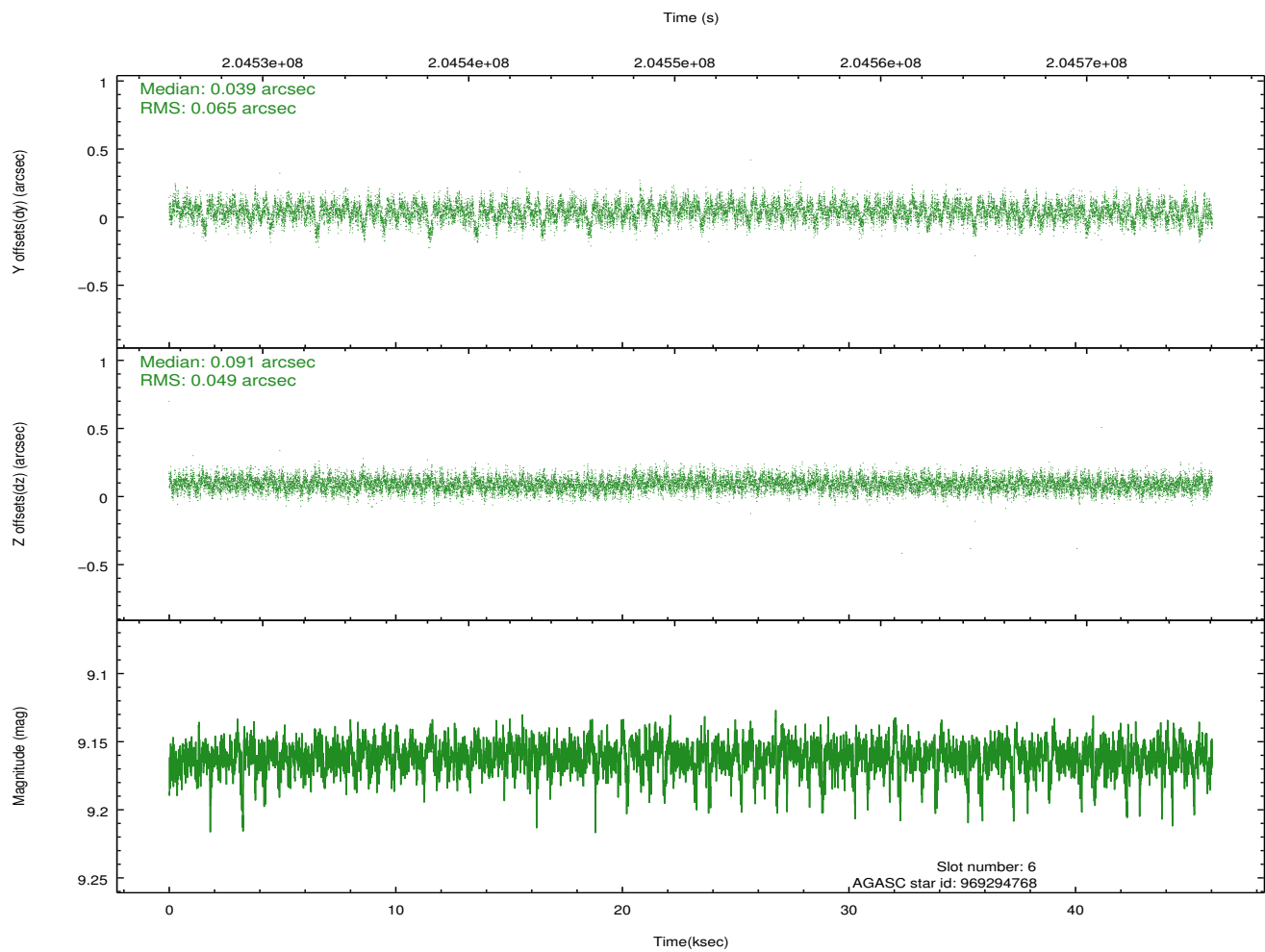
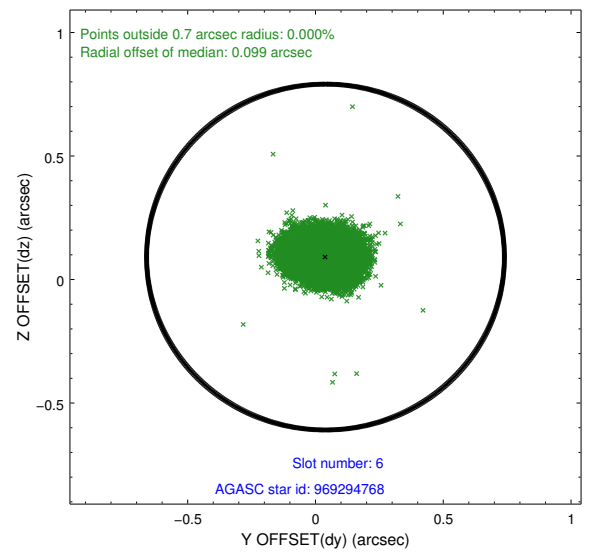
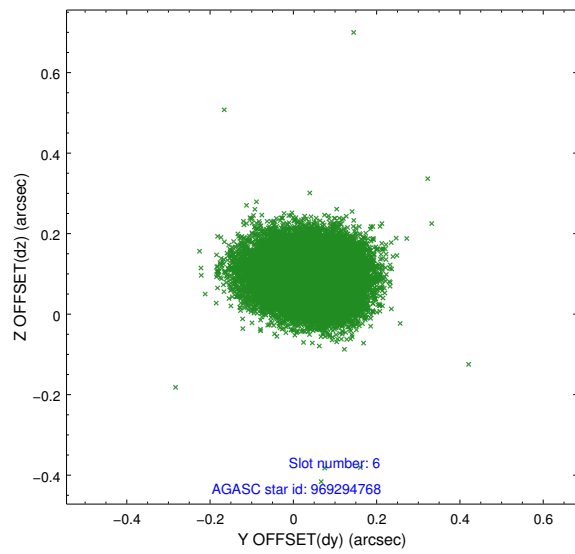
## 2.4.2 Slot 4



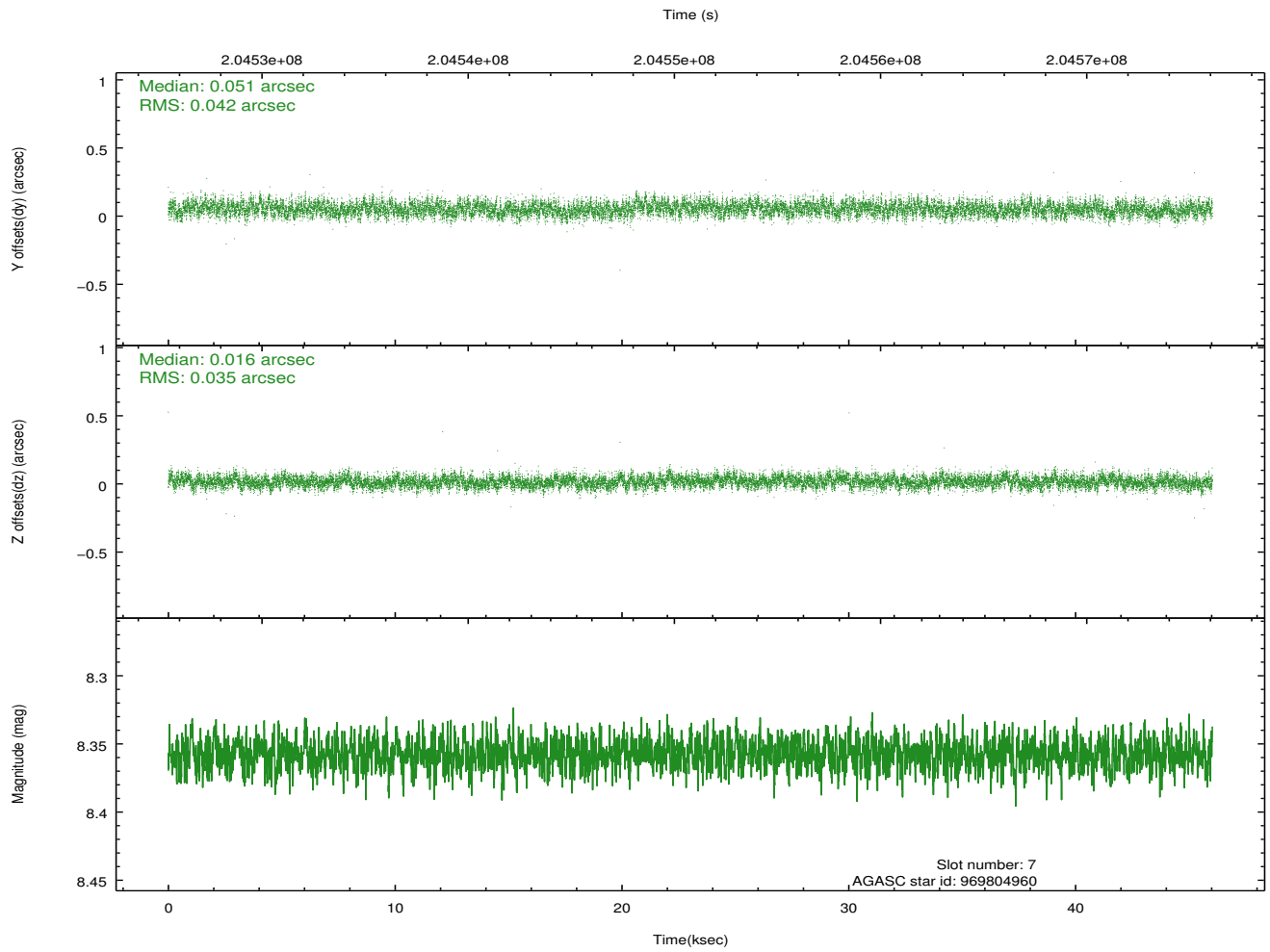
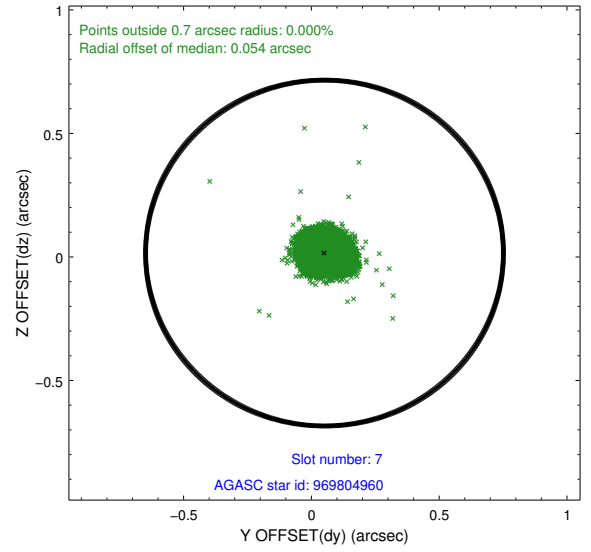
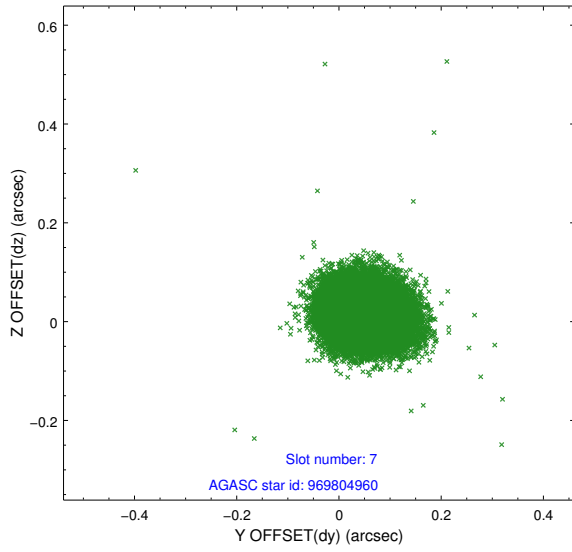
### 2.4.3 Slot 5



## 2.4.4 Slot 6

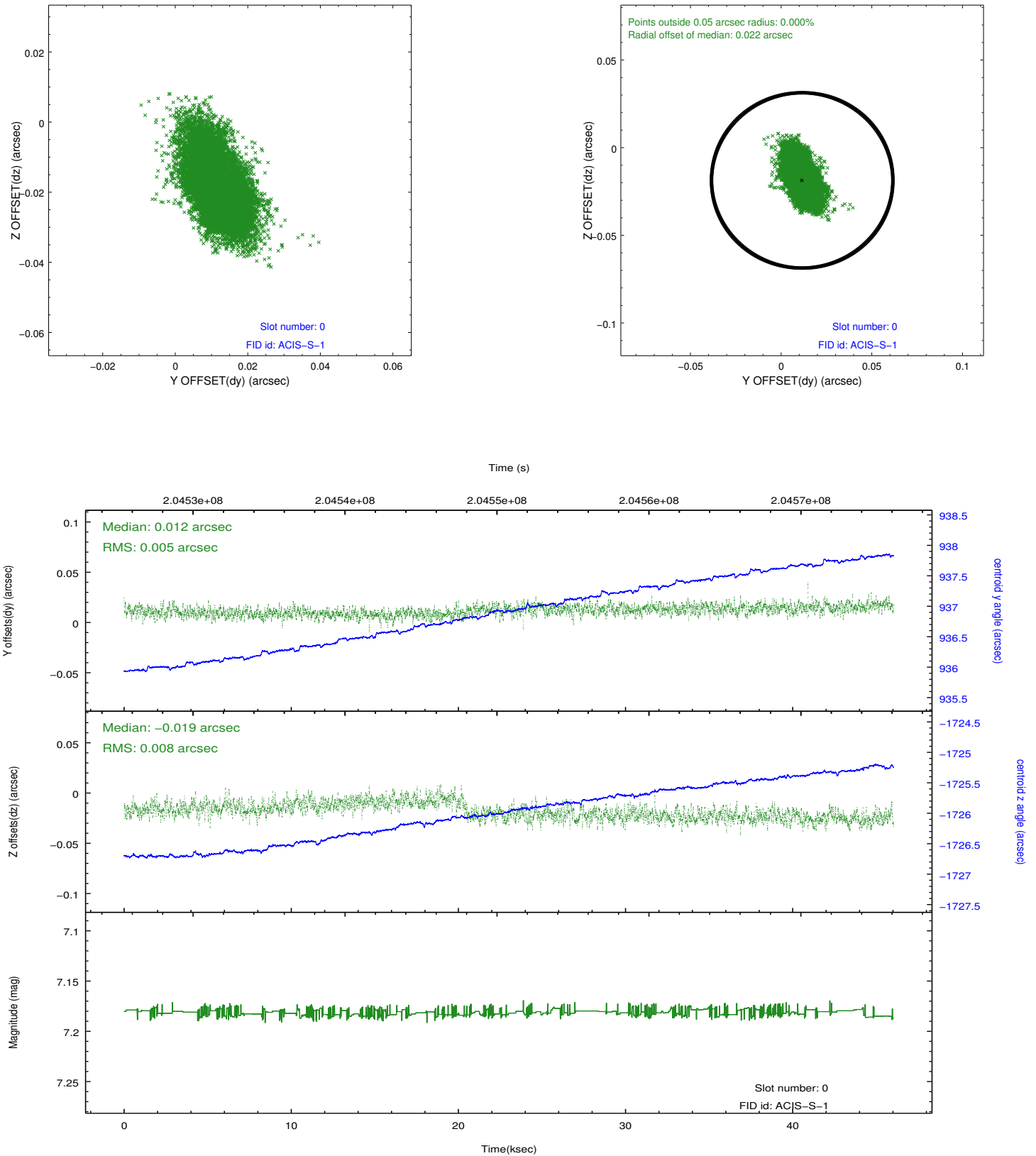


### 2.4.5 Slot 7

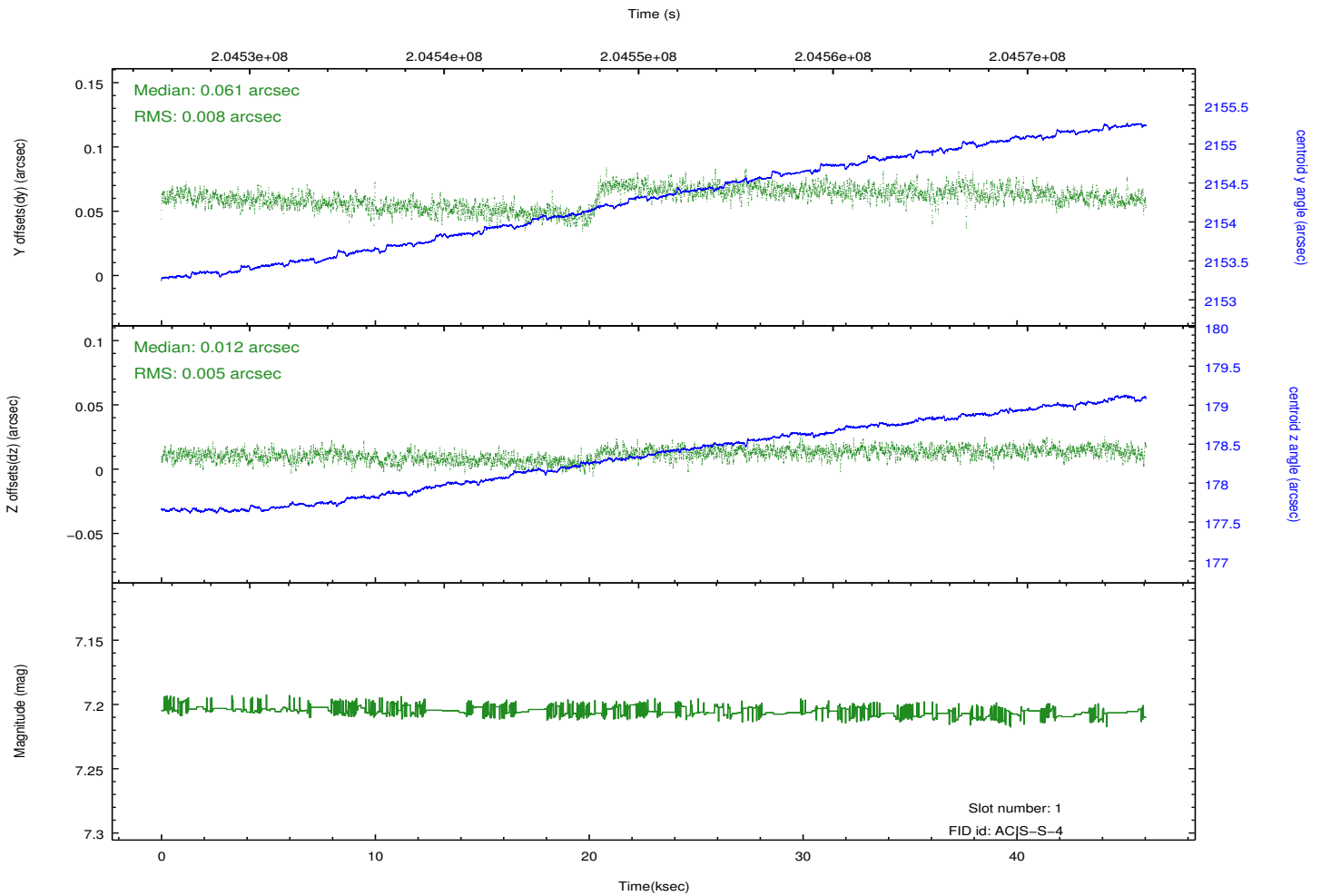
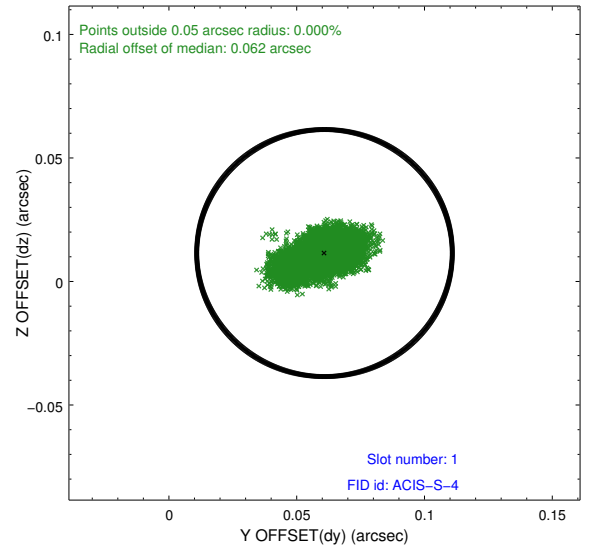
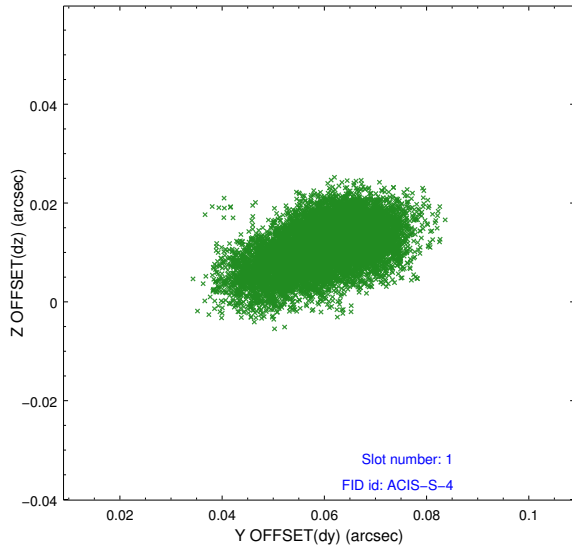


## 2.5 FID Slots

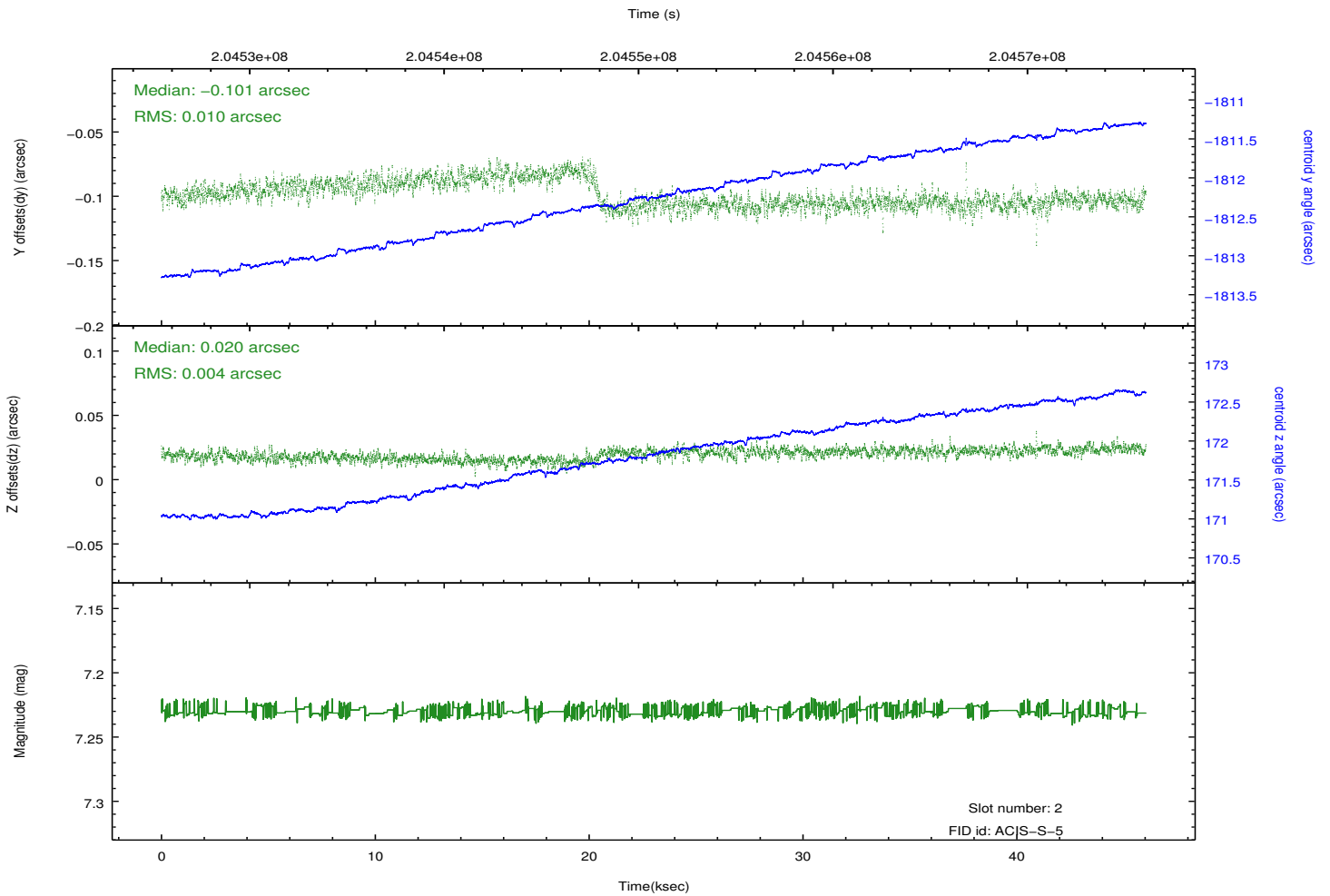
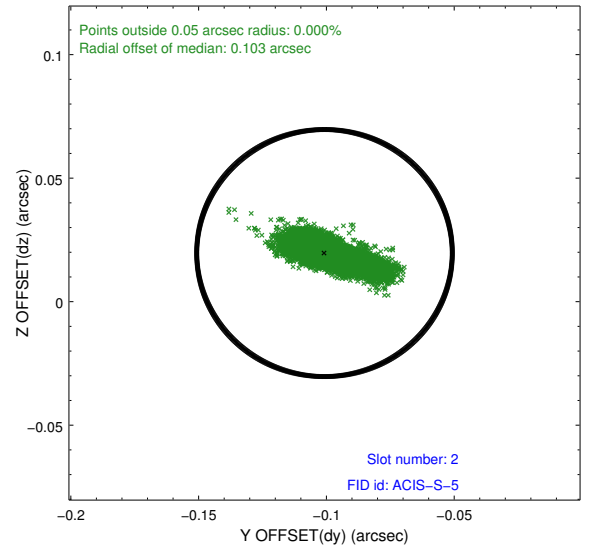
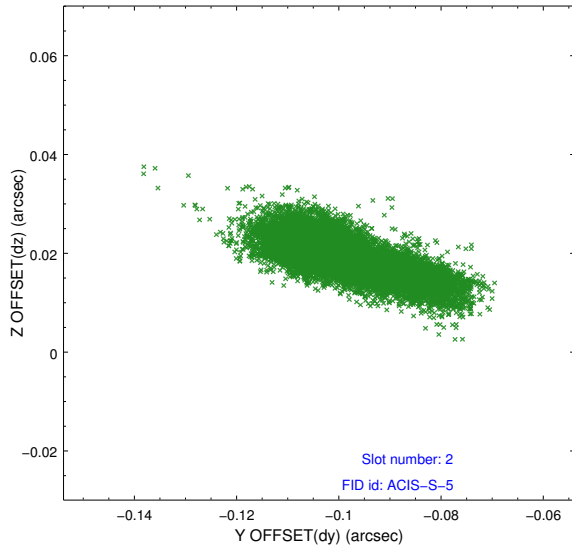
### 2.5.1 Slot 0



## 2.5.2 Slot 1



### 2.5.3 Slot 2



## A Summary

### A.1 Status

V&V Scientist	Jen Lauer
V&V Date (YYYY-MM-DD)	2012.12.20
V&V Edition	1
V&V Disposition and Status	OK
V&V Charge Time	44.956

### A.2 Comments