

V&V Reference Report

L2 ASCDS Version : 8.5.1

Observation 4606 - L2 Version 4
Chandra X-Ray Center

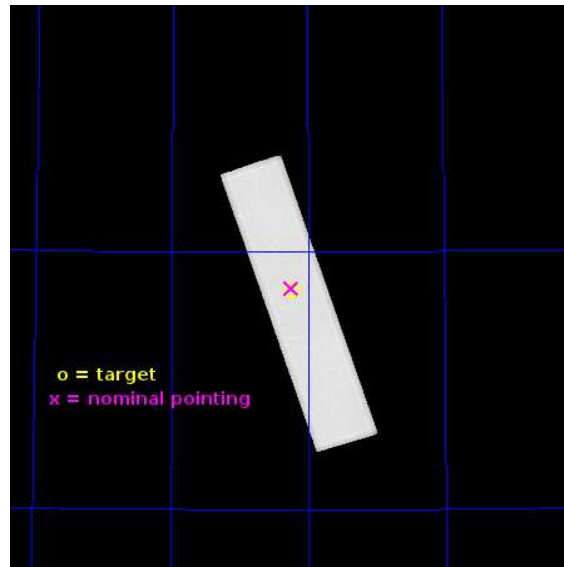
L2 Processing Date : Jun 28 2013

Contents

1	Front	2
2	OBI	3
2.1	OBI	3
2.1.1	Images	3
2.1.2	Parameters	4
2.1.3	Events	4
2.2	Compared Parameters	5
2.3	Aspect	6
2.4	Star Slots	9
2.4.1	Slot 3	9
2.4.2	Slot 4	10
2.4.3	Slot 5	11
2.4.4	Slot 6	12
2.4.5	Slot 7	13
2.5	FID Slots	14
2.5.1	Slot 0	14
2.5.2	Slot 1	15
2.5.3	Slot 2	16
A	Summary	17
A.1	Status	17
A.2	Comments	17

1 Front

seq_num	500431	Sequence number
obs_id	4606	Observation id
title	THE NEXT GEMINGA: TAKING THE PULSE OF THE EGRET SOURCE 3EG J1835+5918	Proposal title
observer	Prof. Jules Halpern	Principal investigator
object	3EG J1835+5918	Source name
ra_targ	279.057083	Observer's specified target RA [deg]
dec_targ	59.425028	Observer's specified target Dec [deg]
ra_nom	279.0601908613	Nominal RA [deg]
dec_nom	59.429455827053	Nominal Dec [deg]
roll_nom	71.362223026373	Nominal Roll [deg]
revision	4	Processing version of data
ontime	28139.582525283	[s]
livetime	28027.822638164	Ontime multiplied by DTCOR
l2events	1151084	Number of level 2 events

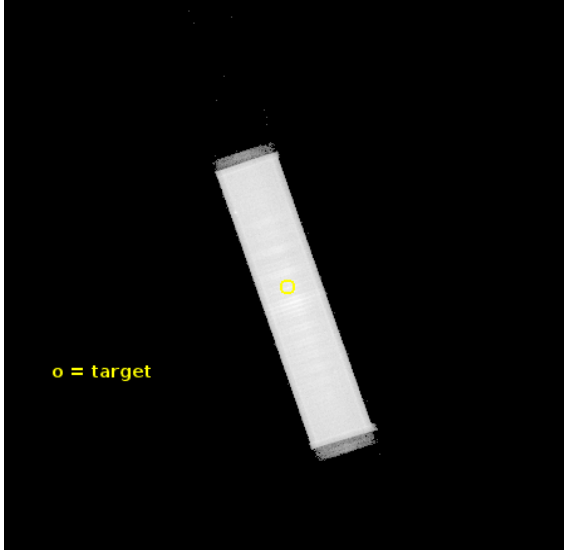


2 OBI

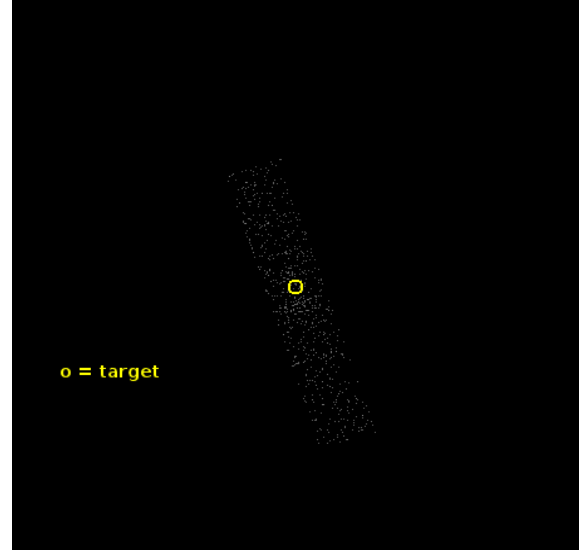
2.1 OBI

2.1.1 Images

Level 1 Image



Level 1 Bad Events



2.1.2 Parameters

obi_num	0	Obi number	sched_exp_time	28000.000000	[s] Scheduled observation exposure time
ascdsver	10	Processing system revision	ontime	28139.582525283	[s]
caldsver	4.5.7	 	l1events	1721838	Number of level 1 events
date	2013-06-28T23:16:41	Date and time of file creation			
revision	4	Processing version of data			

2.1.3 Events

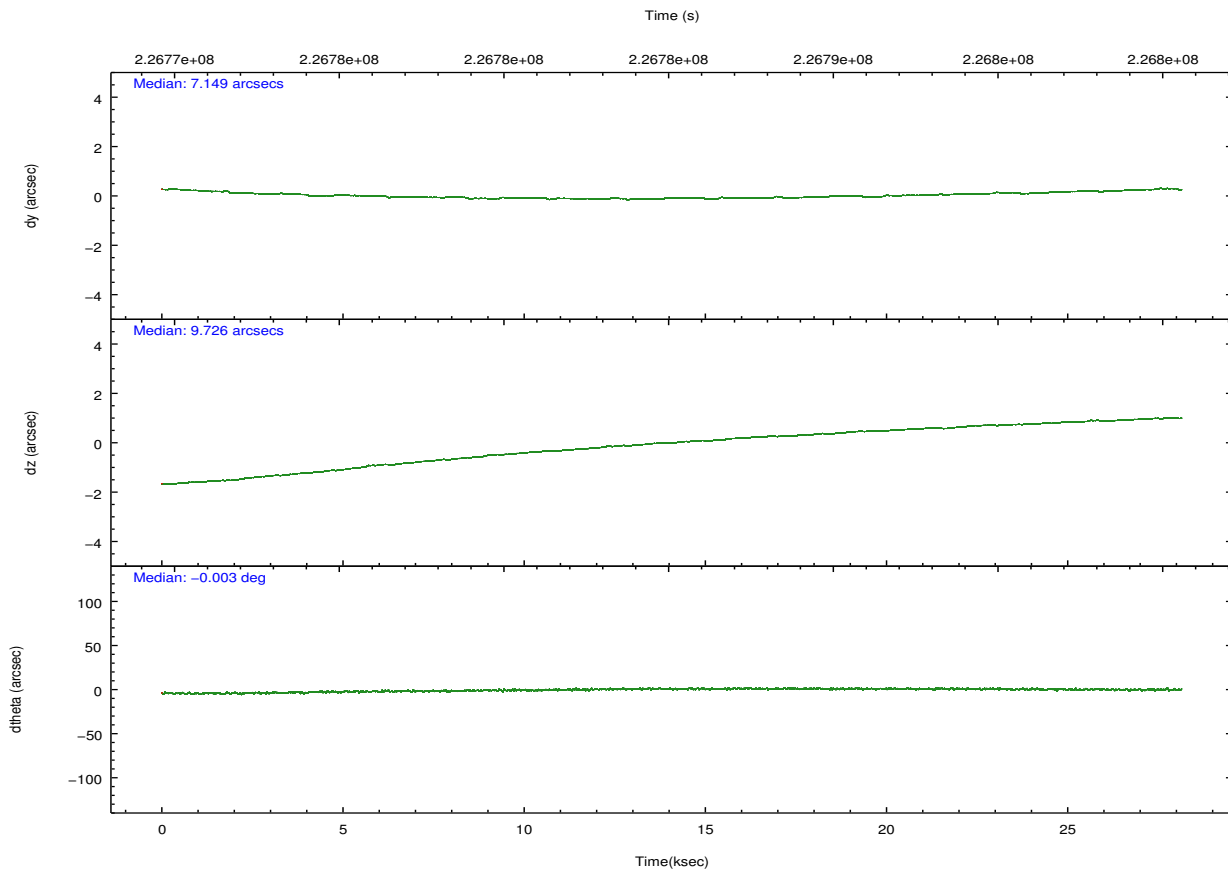
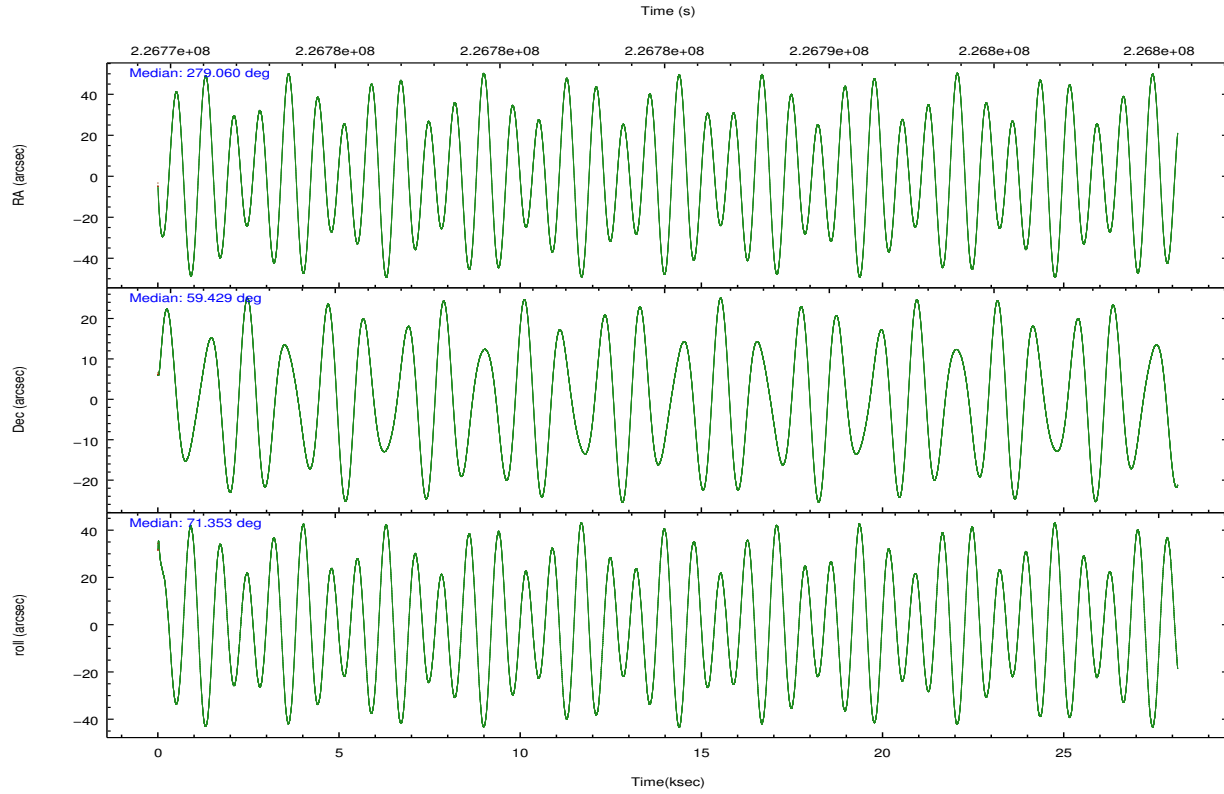
Level 1 Events

	segment 1	segment 2	segment 3
level 1 events	2051	1719772	15
rejected events	107	90158	12
rejected %	5%	5%	80%

2.2 Compared Parameters

Parameter	Planned	Actual	Parameter	Planned	Actual
Instrument	HRC	HRC	Obspar format version number	7	7
Detector	HRC-S	HRC-S	Obspar file type	PREDICTED	ACTUAL
Grating	NONE	NONE	Obspar update status	NONE	UPDATED
Data mode	OBSERVING	OBSERVING			
Observation mode	POINTING	POINTING			
[deg] Pointing RA	279.074059	279.0601908613009			
[deg] Pointing Dec	59.401691	59.42945582705333			
[deg] Pointing Roll	71.282937	71.3622230263725			
[mm] SIM focus pos	-1.429586	-1.428180813131781			
[mm] SIM defocus	0.1037507710433287	0.1051558262725154			
[mm] SIM translation stage pos	250.455976	250.466033080201			
[mm] SIM translation stage offset	0	-0.01005468664627074			
[s] Observation start time (MET)	226771169.184000	226769508.21366			
Observation start date	2005-03-09T15:58:25	2005-03-09T15:31:48			
[s] Observation end time (MET)	226799169.184000	226799970.70254			
Observation end date	2005-03-09T23:45:05	2005-03-09T23:59:30			

2.3 Aspect

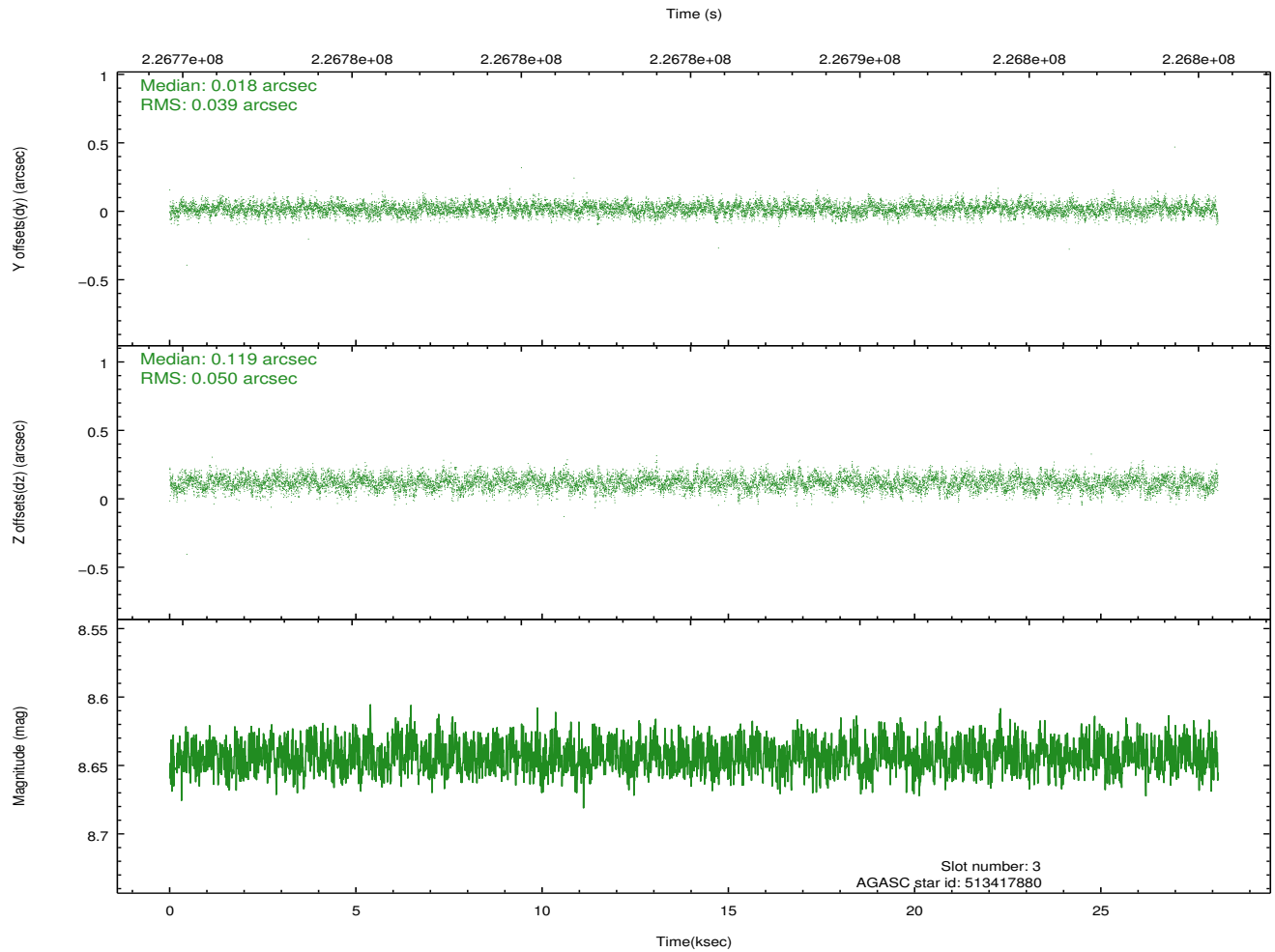
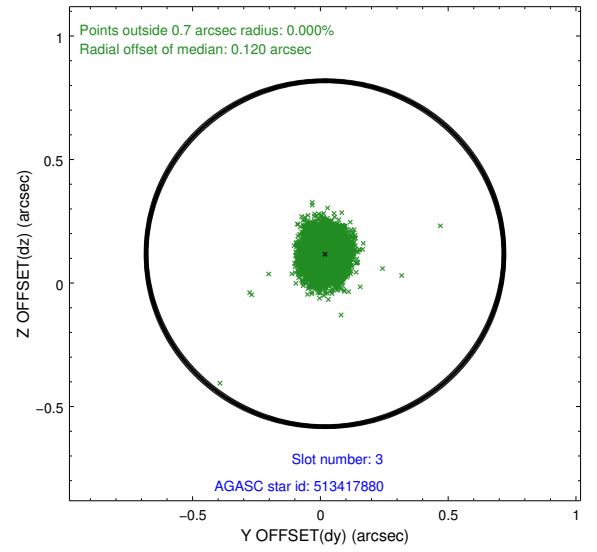
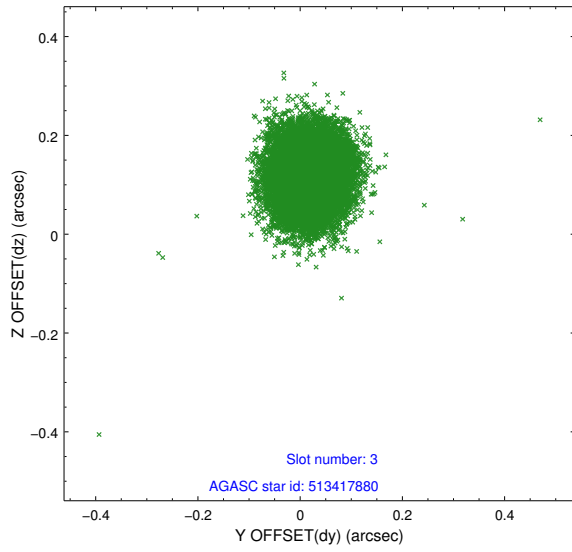


Slot Statistics

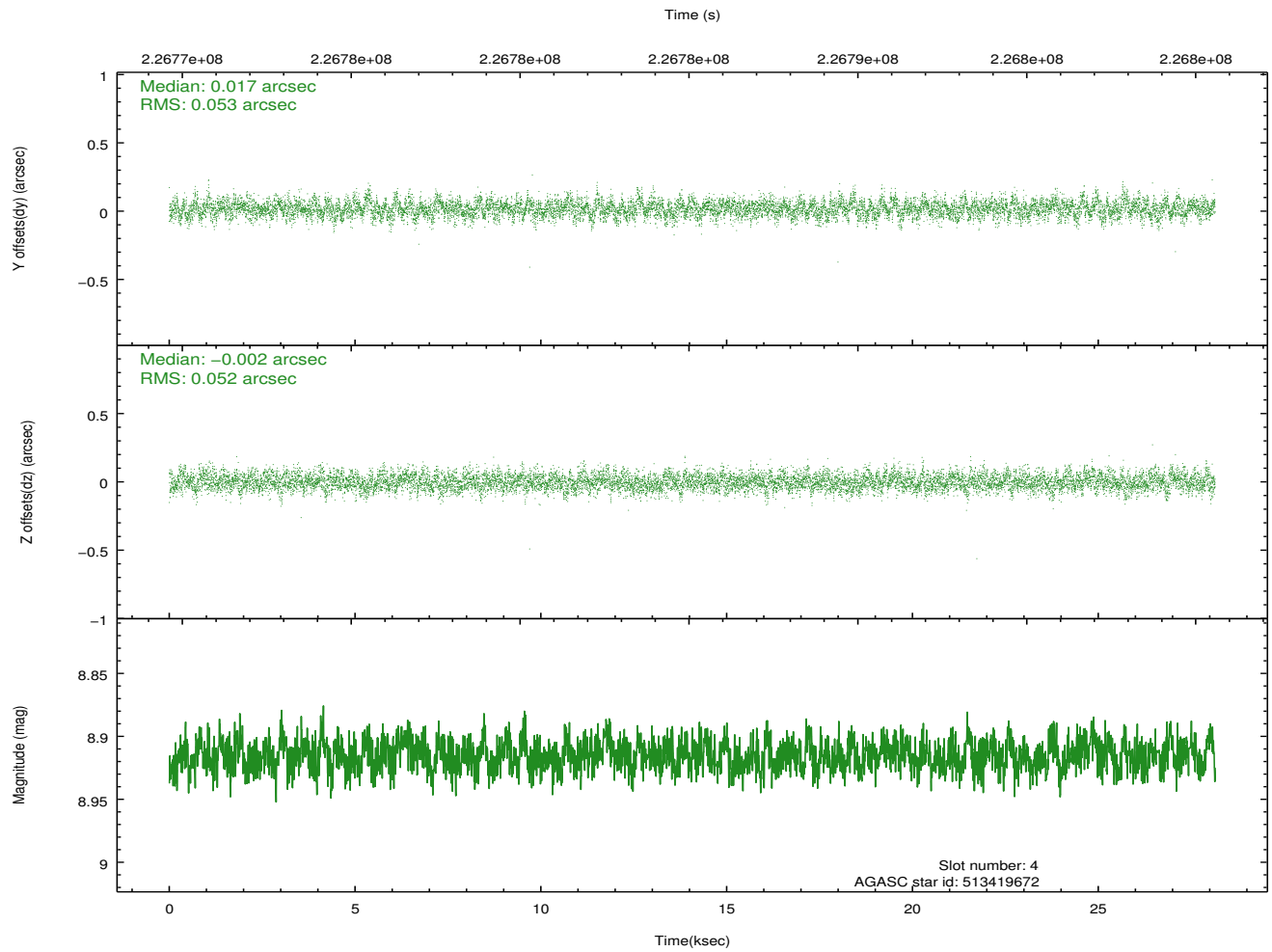
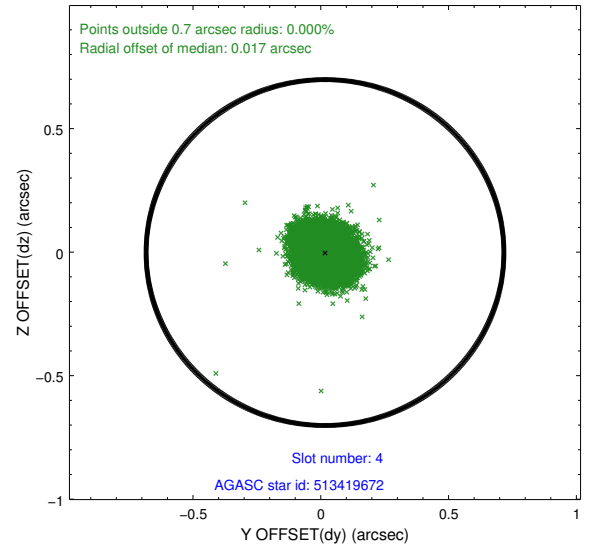
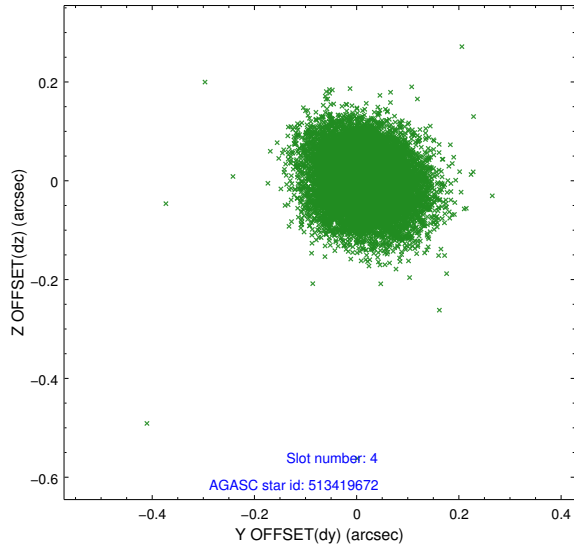
slot	status	id	mag	n_pts	med_dy	med_dz	dr1	dr2	ra	dec	mean_y	mean_z
0	FID	HRC-S-1	7.01	6863	0.125	-0.179	0.016	0.058	0.000000	0.000000	-1161.33	-458.27
1	FID	HRC-S-2	7.01	6864	0.174	-0.117	0.006	0.011	0.000000	0.000000	1238.23	-450.94
2	FID	HRC-S-3	7.03	6864	0.091	-0.005	0.016	0.061	0.000000	0.000000	-1163.90	571.35
3	GUIDE	513417880	8.64	13725	0.018	0.119	0.067	0.108	279.584245	59.253862	-199.14	-1058.79
4	GUIDE	513419672	8.92	13725	0.017	-0.002	0.079	0.129	278.251329	59.888562	1191.68	1972.86
5	GUIDE	513420760	9.04	13719	-0.023	0.023	0.096	0.156	277.675033	59.117633	-1772.63	2128.78
6	GUIDE	513422640	8.02	13727	-0.038	0.002	0.070	0.114	277.976729	59.419970	-567.42	1929.83
7	GUIDE	513421296	9.07	13720	0.023	-0.140	0.103	0.165	277.849502	59.566976	-133.86	2312.34

2.4 Star Slots

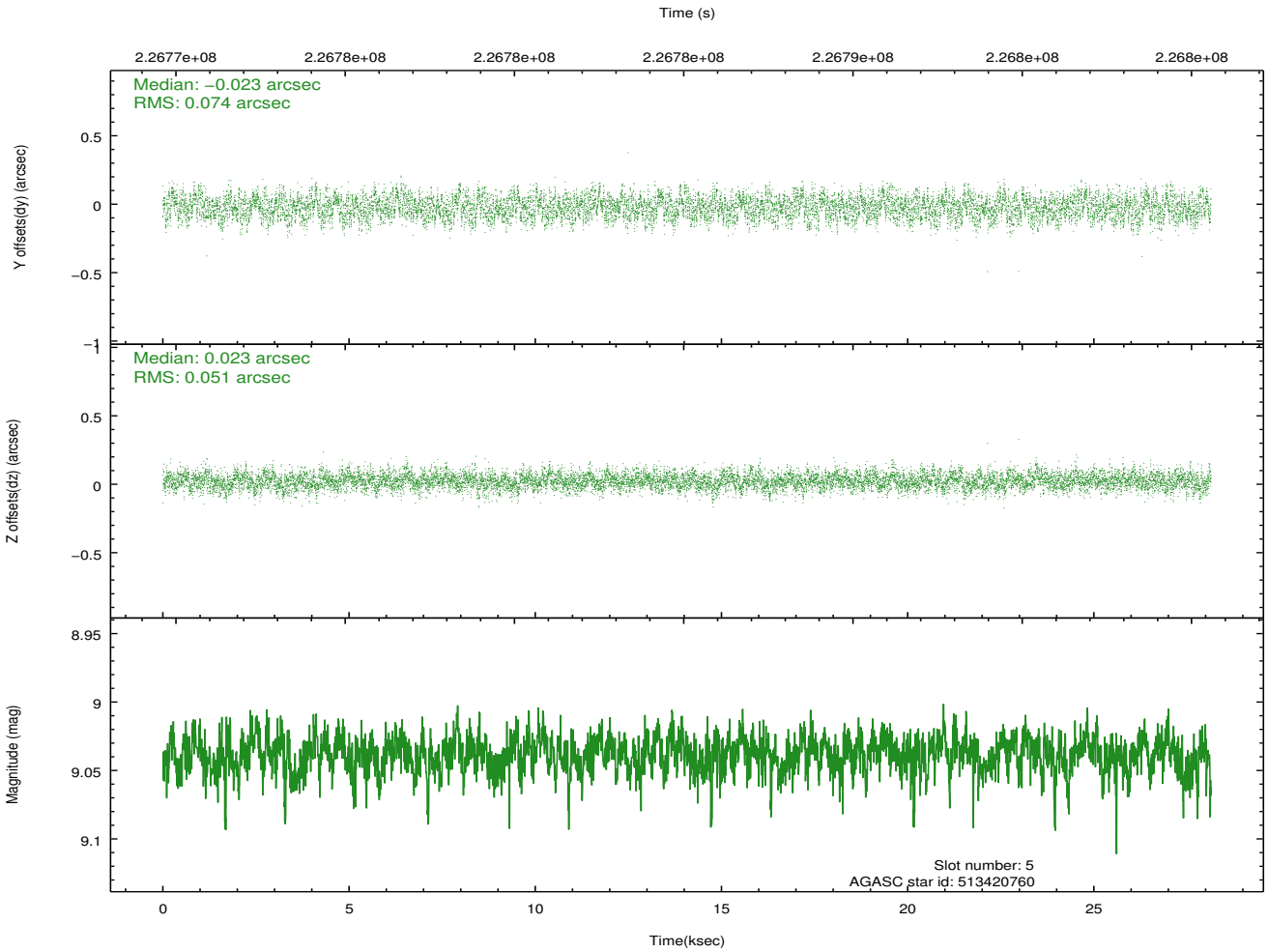
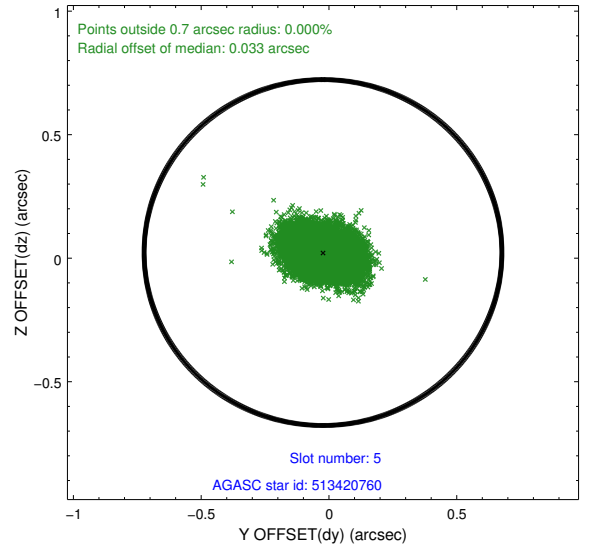
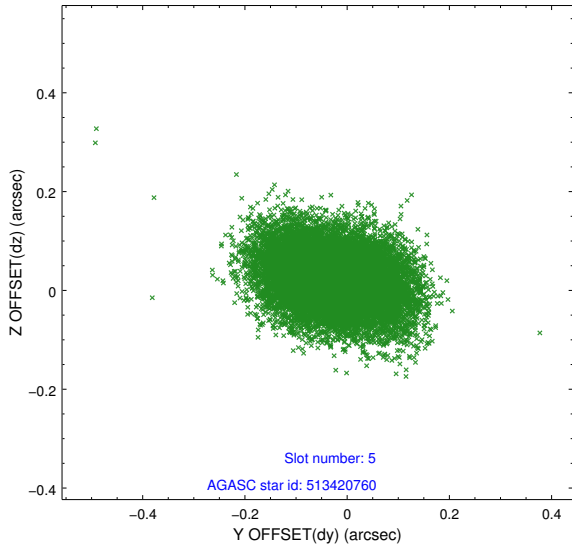
2.4.1 Slot 3



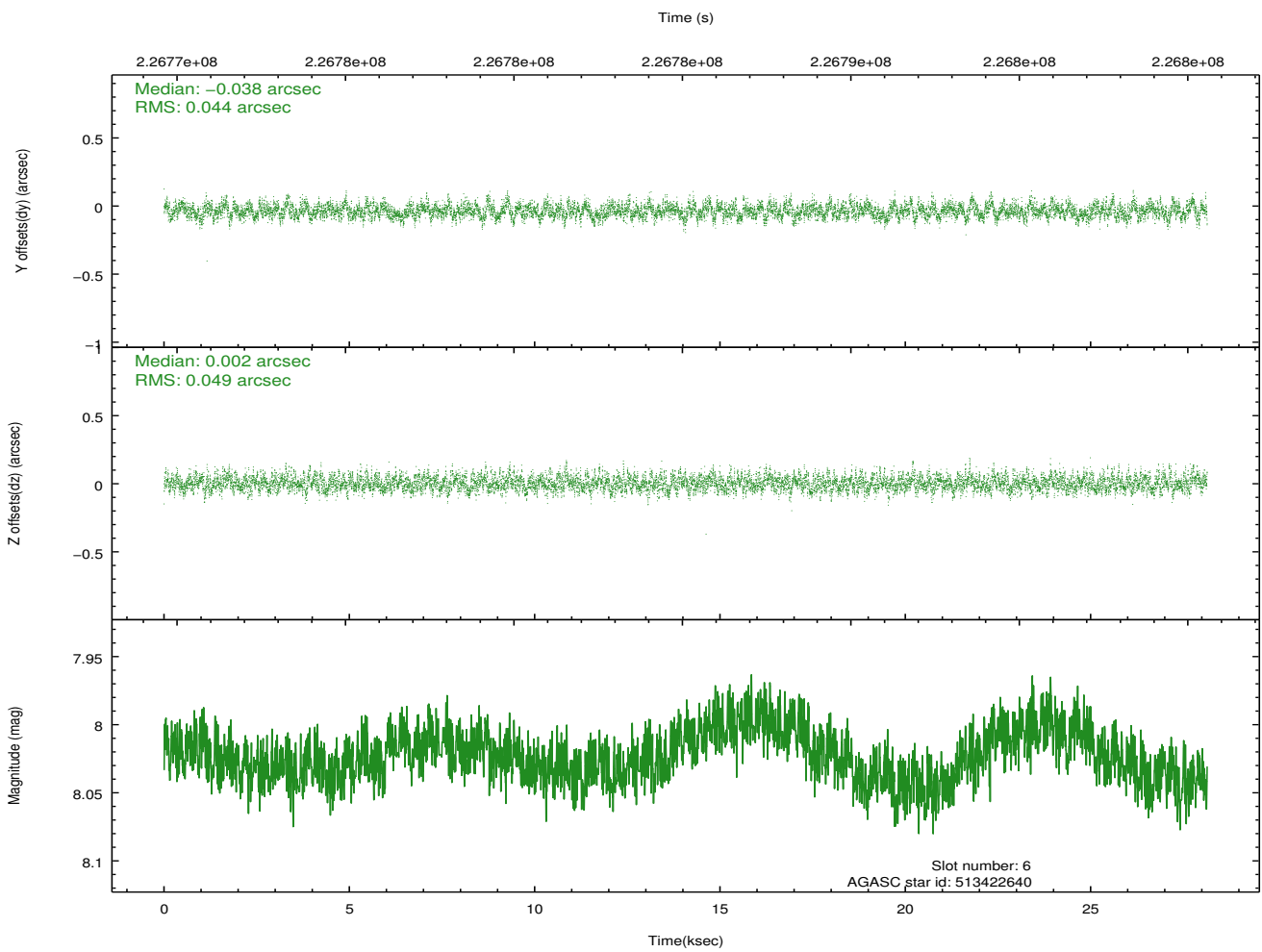
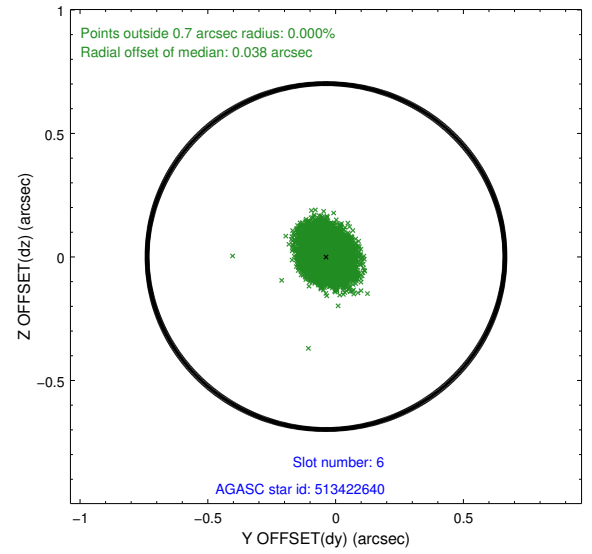
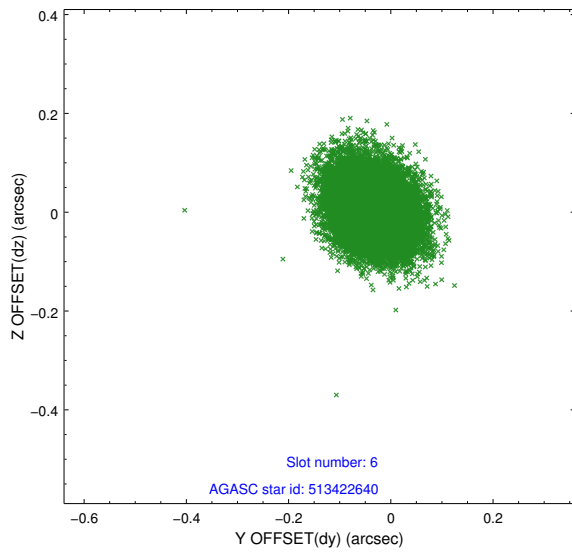
2.4.2 Slot 4



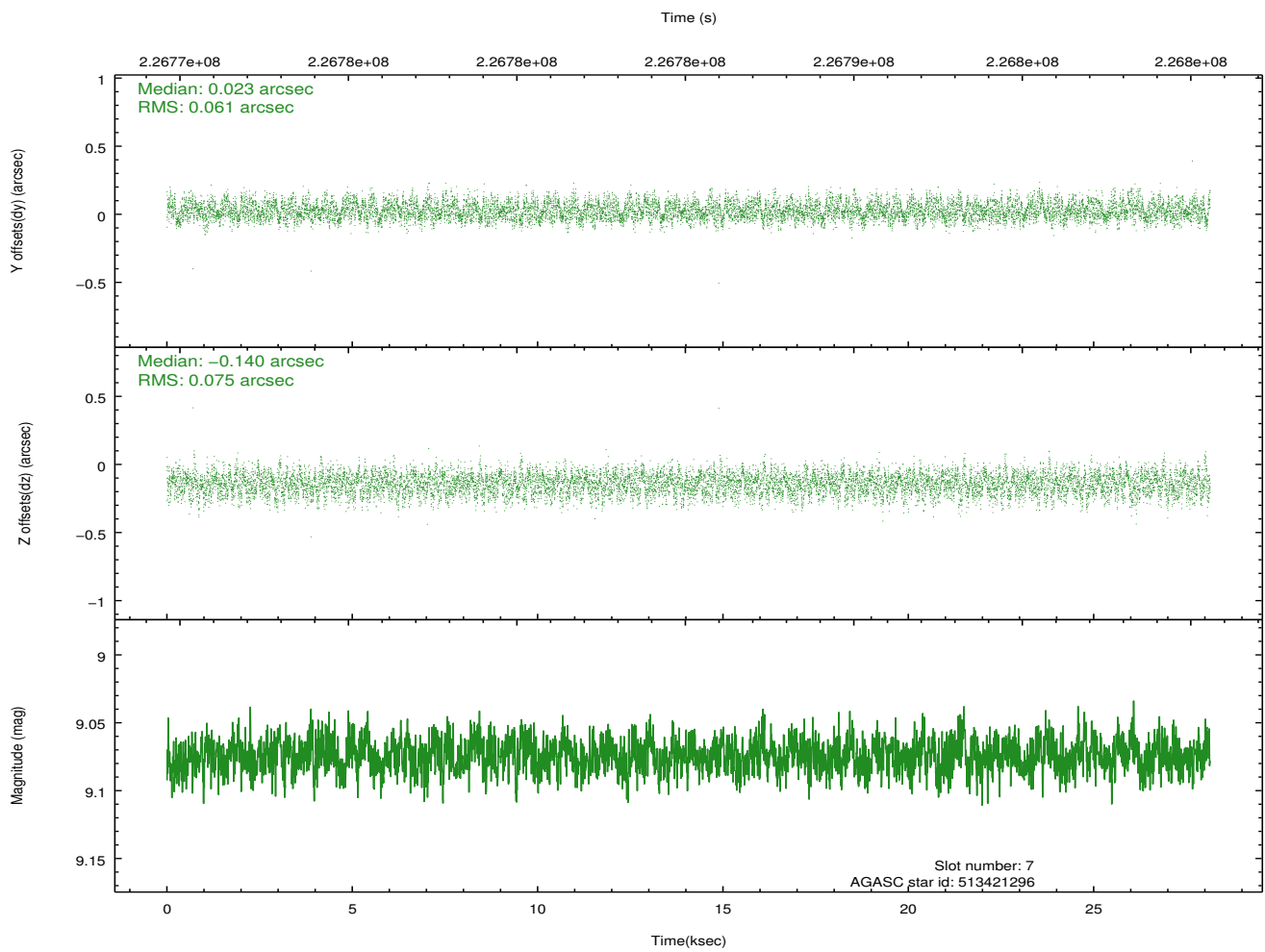
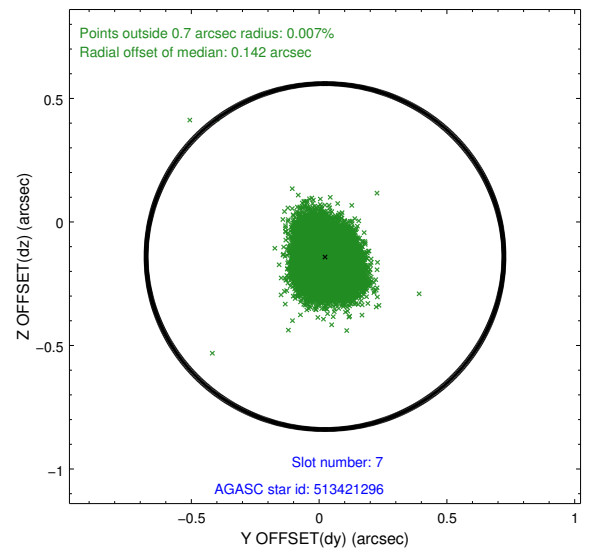
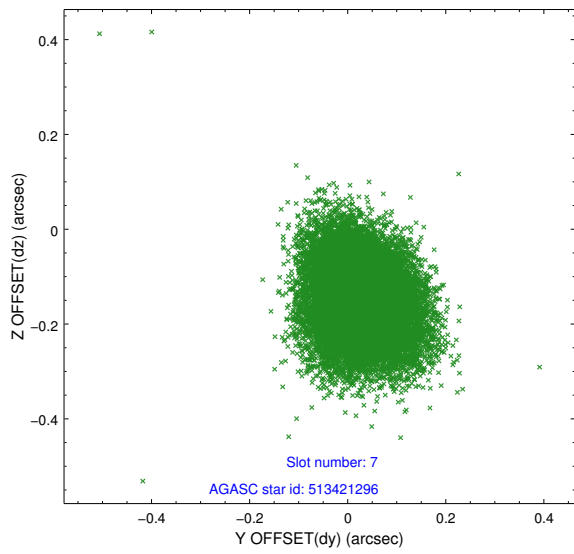
2.4.3 Slot 5



2.4.4 Slot 6

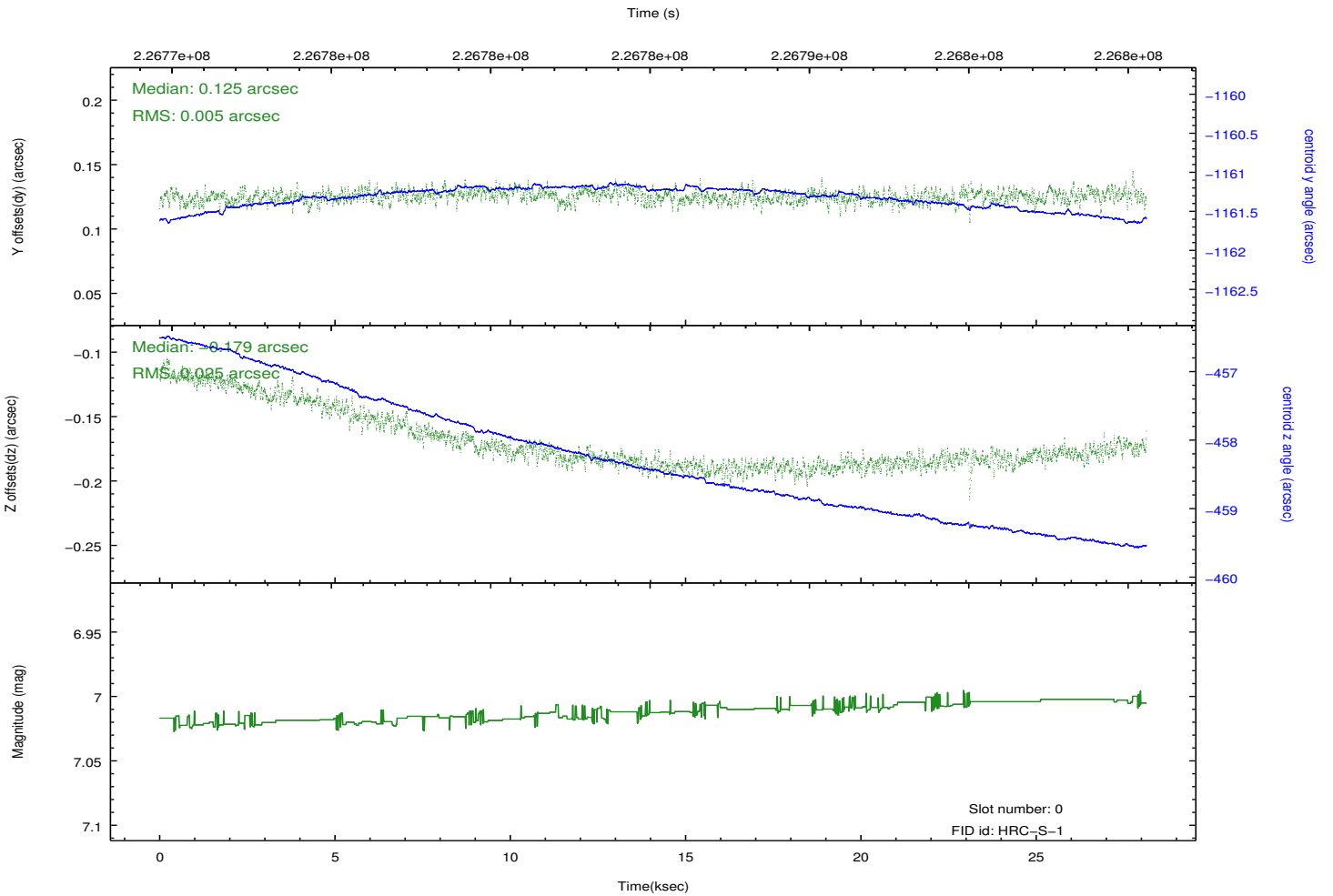
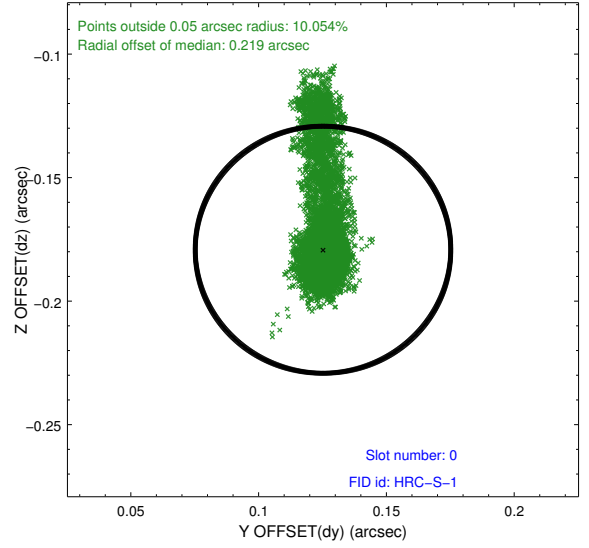
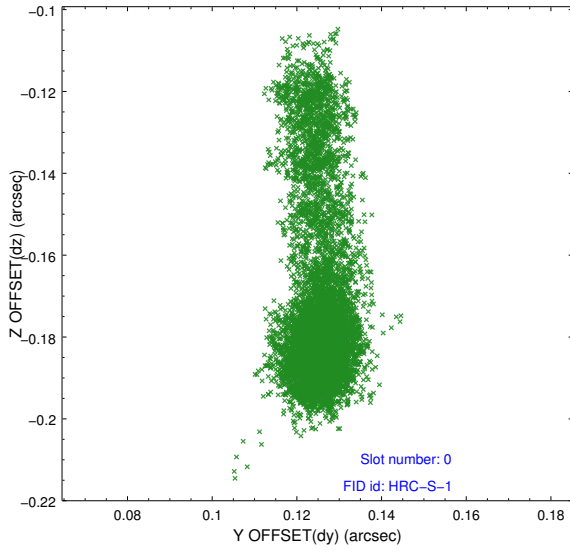


2.4.5 Slot 7

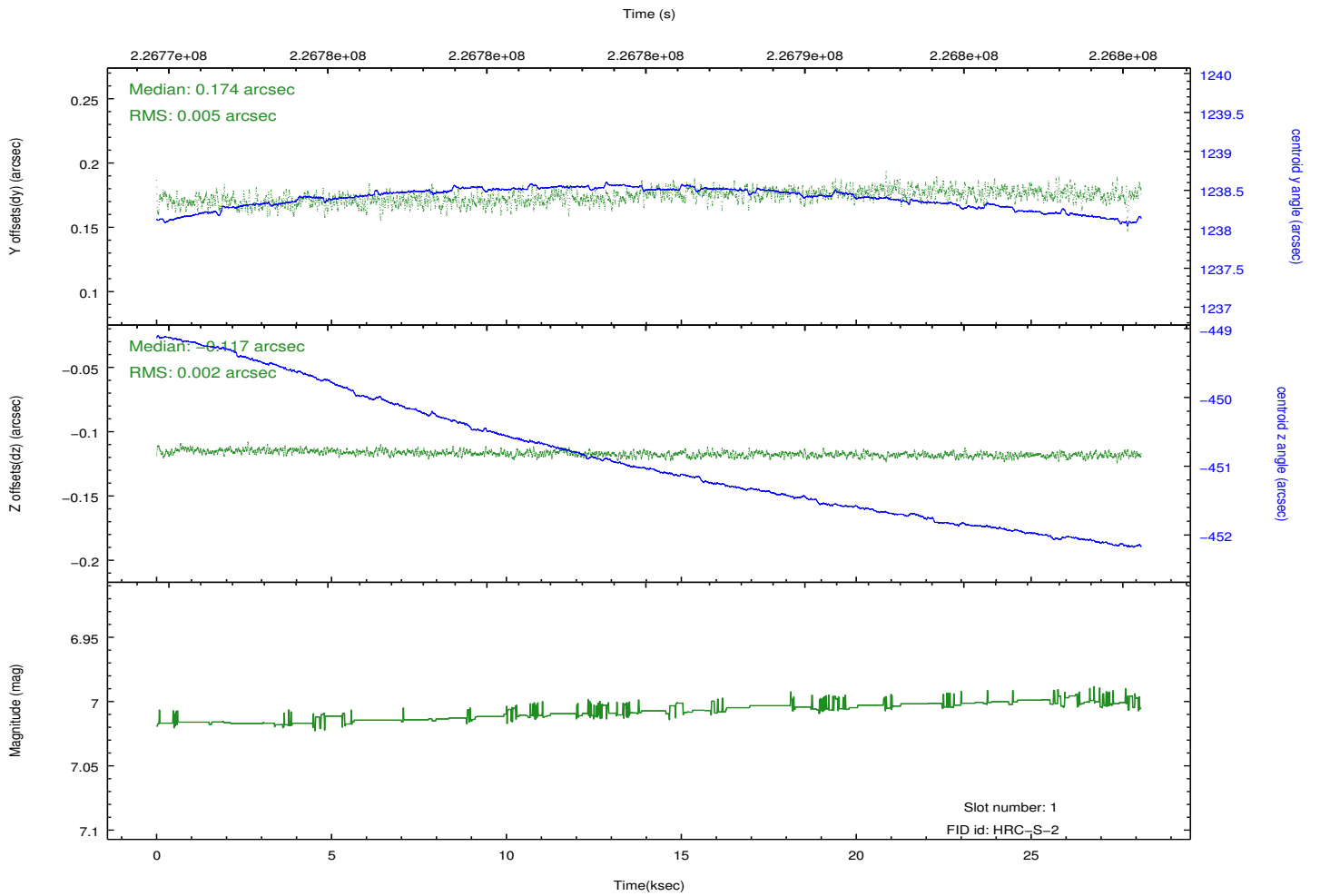
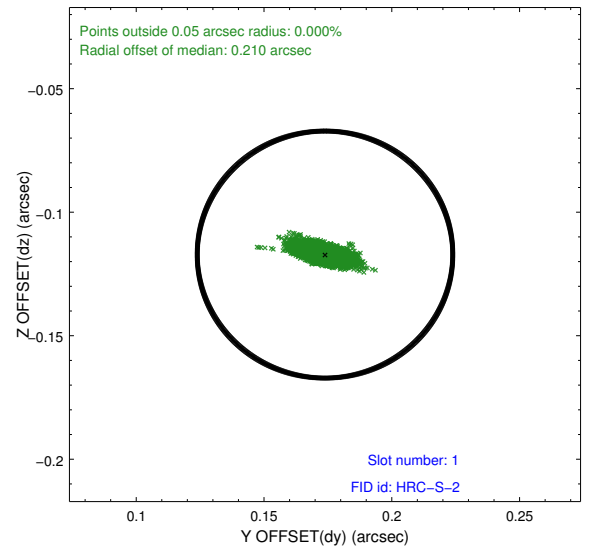
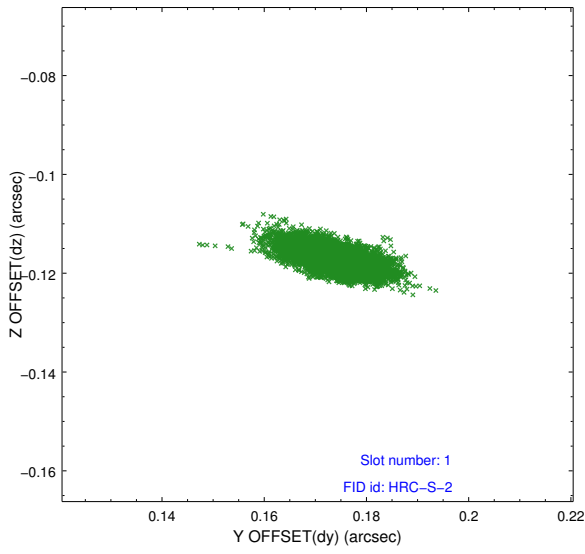


2.5 FID Slots

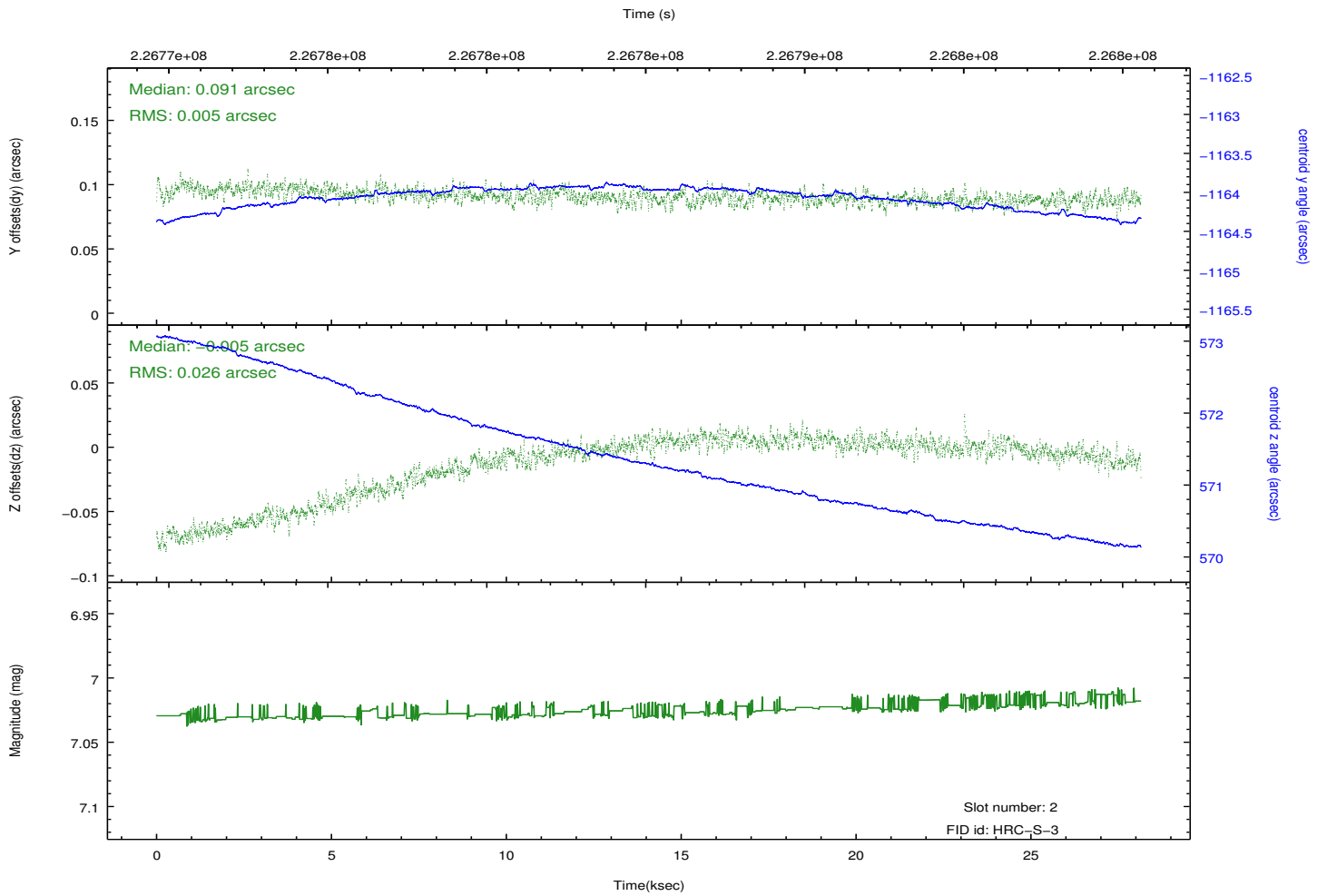
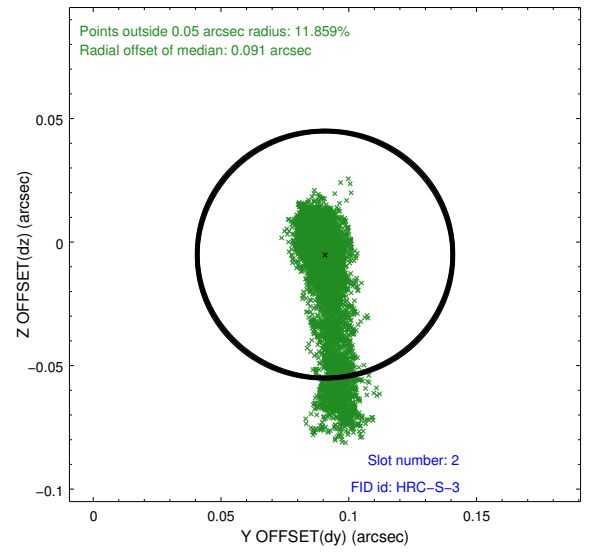
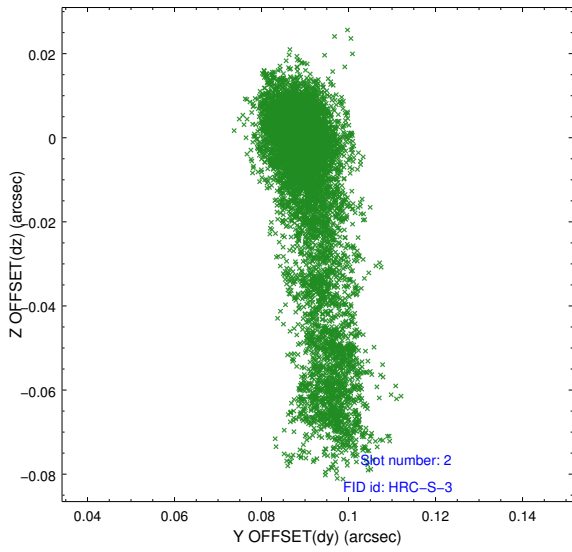
2.5.1 Slot 0



2.5.2 Slot 1



2.5.3 Slot 2



A Summary

A.1 Status

V&V Scientist	Beth Sundheim
V&V Date (YYYY-MM-DD)	2013.07.01
V&V Edition	1
V&V Disposition and Status	OK
V&V Charge Time	28.13958

A.2 Comments