

V&V Reference Report

L2 ASCDS Version : 8.5

Observation 4736 - L2 Version 3
Chandra X-Ray Center

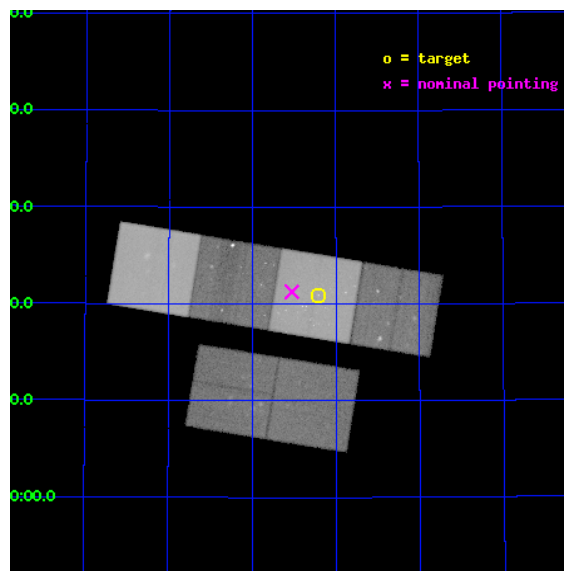
L2 Processing Date : Dec 11 2012

Contents

1	Front	2
2	OBI	3
2.1	OBI	3
2.1.1	Images	3
2.1.2	Bias	3
2.1.3	Parameters	4
2.1.4	Events	4
2.2	Compared Parameters	5
2.3	Aspect	6
2.4	Star Slots	9
2.4.1	Slot 3	9
2.4.2	Slot 4	10
2.4.3	Slot 5	11
2.4.4	Slot 6	12
2.4.5	Slot 7	13
2.5	FID Slots	14
2.5.1	Slot 0	14
2.5.2	Slot 1	15
2.5.3	Slot 2	16
A	Summary	17
A.1	Status	17
A.2	Comments	17

1 Front

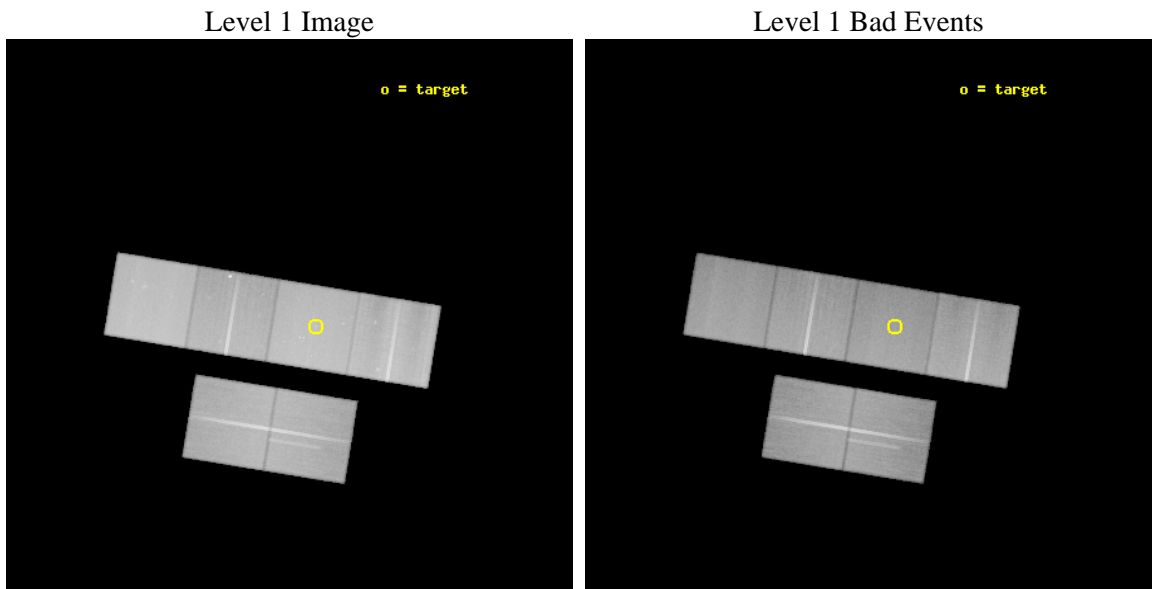
seq_num	600391	Sequence number
obs_id	4736	Observation id
title	An Ultra-Deep Study of M101	Proposal title
observer	Dr. K.D. Kuntz	Principal investigator
object	M101	Source name
dtcycle	0	
cycle	P	events from which exps? Prim/Second/Both
ra_targ	210.80375	Observer's specified target RA [deg]
dec_targ	54.348778	Observer's specified target Dec [deg]
ra_nom	210.88160812791	Nominal RA [deg]
dec_nom	54.354414716081	Nominal Dec [deg]
roll_nom	9.293358385944	Nominal Roll [deg]
revision	3	Processing version of data
ontime	78342.399708152	Sum of GTIs [s]
livetime	77350.381070917	Livetime [s]
ontime2	78332.676916808	Sum of GTIs [s]
ontime3	78332.676936805	Sum of GTIs [s]
ontime5	78342.399708152	Sum of GTIs [s]
ontime6	78335.917907119	Sum of GTIs [s]
ontime7	78342.399708152	Sum of GTIs [s]
ontime8	78332.677046418	Sum of GTIs [s]
l2events	1061513	Number of level 2 events



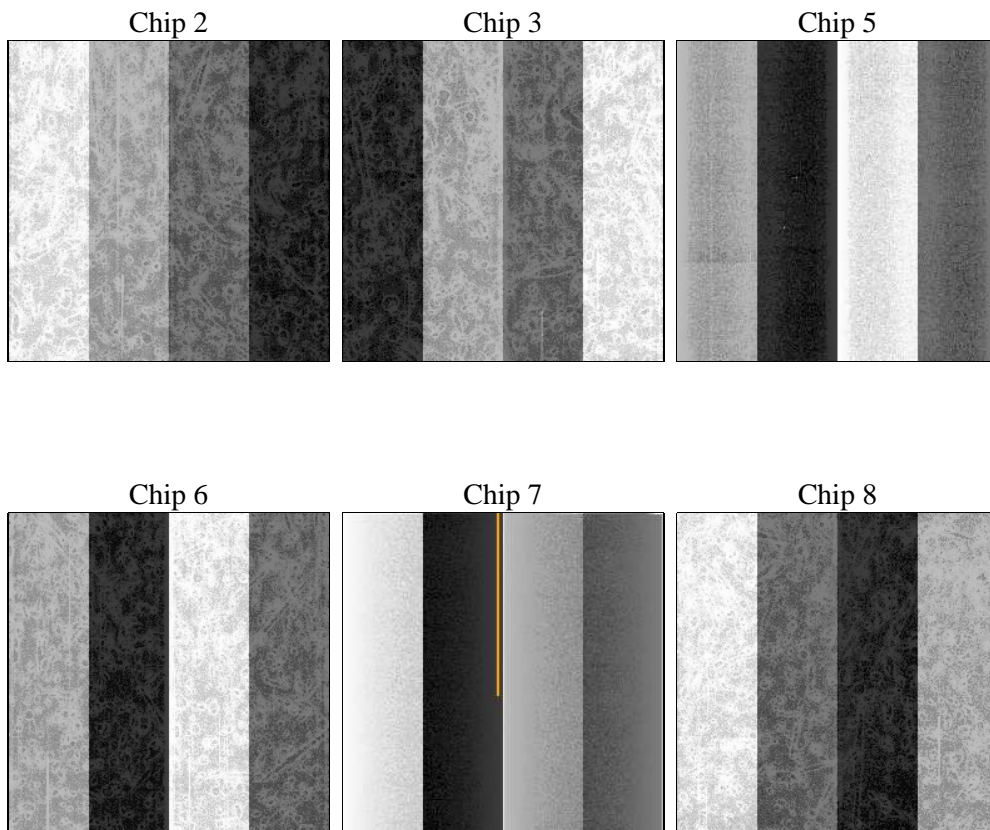
2 OBI

2.1 OBI

2.1.1 Images



2.1.2 Bias



2.1.3 Parameters

obi_num	0	Obi number	sched_exp_time	78200.000000	[s] Scheduled observation exposure time
ascdsver	8.5	Processing system revision	ontime	78342.399708152	Sum of GTIs [s]
caldbver	4.5.4	 	ontime2	78332.676916808	Sum of GTIs [s]
date	2012-12-11T04:07:46	Date and time of file creation	ontime3	78332.676936805	Sum of GTIs [s]
revision	3	Processing version of data	ontime5	78342.399708152	Sum of GTIs [s]
			ontime6	78335.917907119	Sum of GTIs [s]
			ontime7	78342.399708152	Sum of GTIs [s]
			ontime8	78332.677046418	Sum of GTIs [s]
			l1events	4598164	Number of level 1 events

2.1.4 Events

	ccd 2	ccd 3	ccd 5	ccd 6	ccd 7	ccd 8		ccd 2	ccd 3	ccd 5	ccd 6	ccd 7	ccd 8
level 1 events	661653	621361	926763	667568	871569	849250	grade 0 events	37684	34238	28539	37945	38087	70612
rejected events	580989	545406	508791	582770	499085	638556		5%	5%	3%	5%	4%	8%
rejected %	87%	87%	54%	87%	57%	75%	grade 1 events	435	408	1246	367	875	641
								0%	0%	0%	0%	0%	0%
							grade 2 events	16265	14477	127898	16967	75181	43132
								2%	2%	13%	2%	8%	5%
							grade 3 events	7110	7324	17943	7556	33558	24394
								1%	1%	1%	1%	3%	2%
							grade 4 events	7348	7297	17318	7459	33003	22444
								1%	1%	1%	1%	3%	2%
							grade 5 events	24652	27219	69714	28823	80970	38545
								3%	4%	7%	4%	9%	4%
							grade 6 events	12828	13146	229174	15475	194930	51661
								1%	2%	24%	2%	22%	6%
							grade 7 events	555331	517252	434931	552976	414965	597821
								83%	83%	46%	82%	47%	70%

2.2 Compared Parameters

Parameter	Planned	Actual	Parameter	Planned	Actual
Instrument	ACIS	ACIS	Obspar format version number	7	7
Detector	ACIS-235678	ACIS-235678	Obspar file type	PREDICTED	ACTUAL
Grating	NONE	NONE	Obspar update status	NONE	UPDATED
Data mode	VFAINT	VFAINT	Number of optional ACIS chips dropped	0	0
Observation mode	POINTING	POINTING	On-chip summing requested	N	N
[deg] Pointing RA	210.845857	210.8816081279102	Subarray requested	NONE	NONE
[deg] Pointing Dec	54.336878	54.35441471608113	Alternating exposures requested	N	N
[deg] Pointing Roll	9.165783	9.293358385944041	[s] Primary exposure time	0.000000	3.2
[mm] SIM focus pos	-0.684267	-0.6828225247311905			
[mm] SIM defocus	0	0.001444936568705701			
[mm] SIM translation stage pos	-190.132523	-190.1400660498719			
[mm] SIM translation stage offset	0	0.00754346686406393			
[s] Observation start time (MET)	215723066.184000	215721789.67814			
Observation start date	2004-11-01T19:03:22	2004-11-01T18:43:09			
[s] Observation end time (MET)	215801266.184000	215801798.61923			
Observation end date	2004-11-02T16:46:42	2004-11-02T16:56:38			
Read mode	TIMED	TIMED			

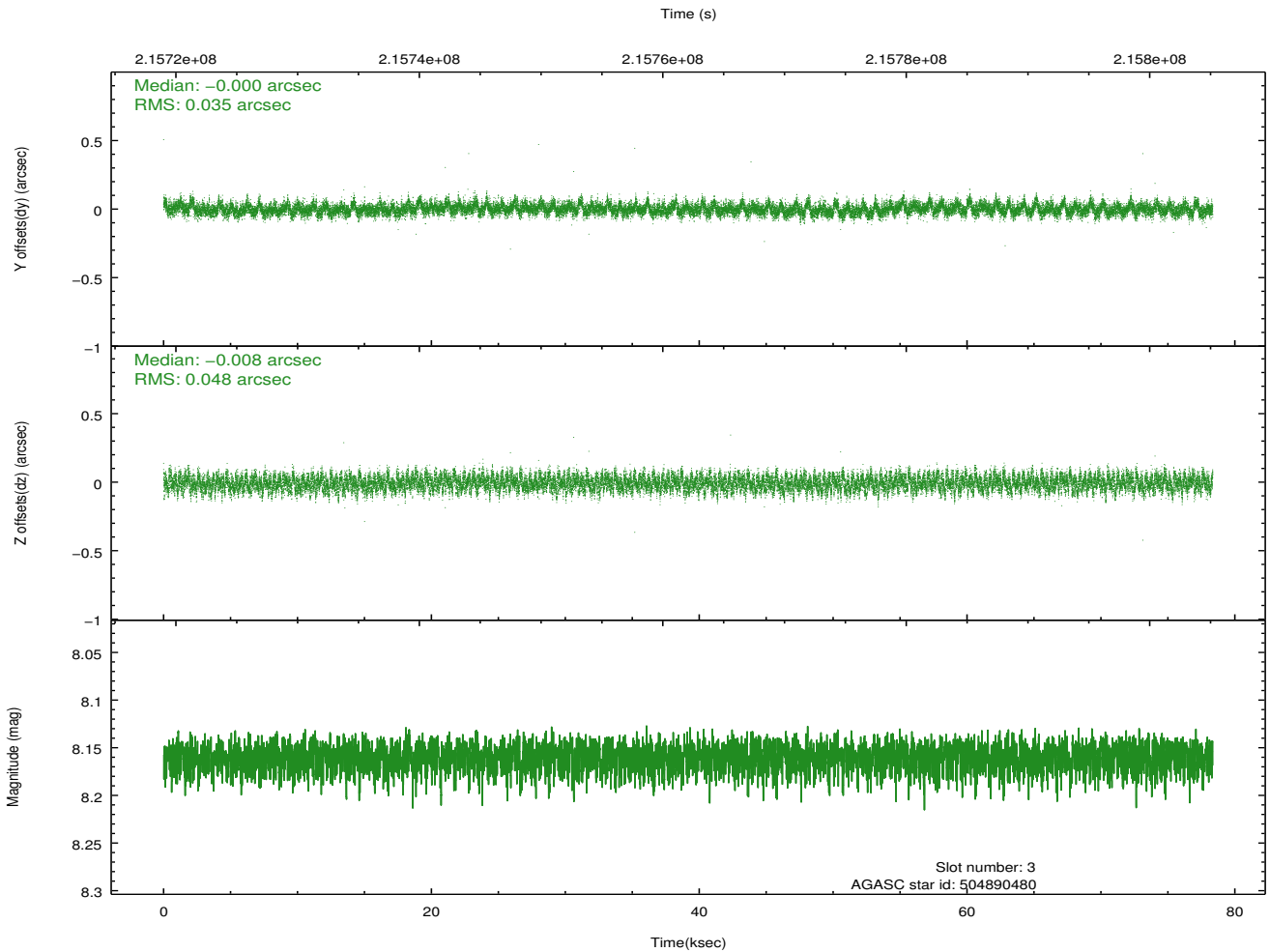
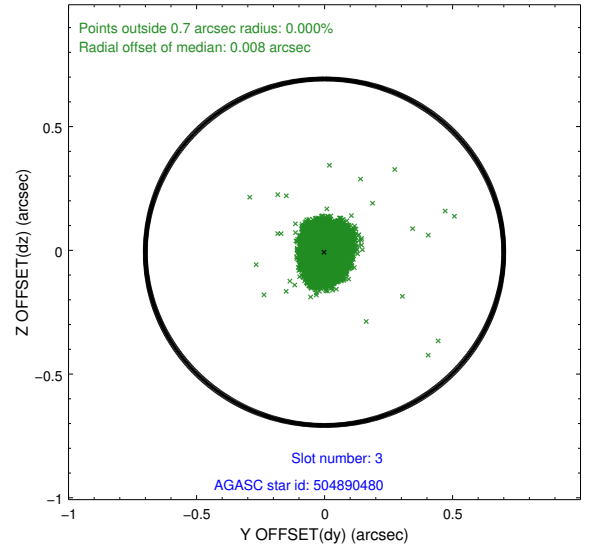
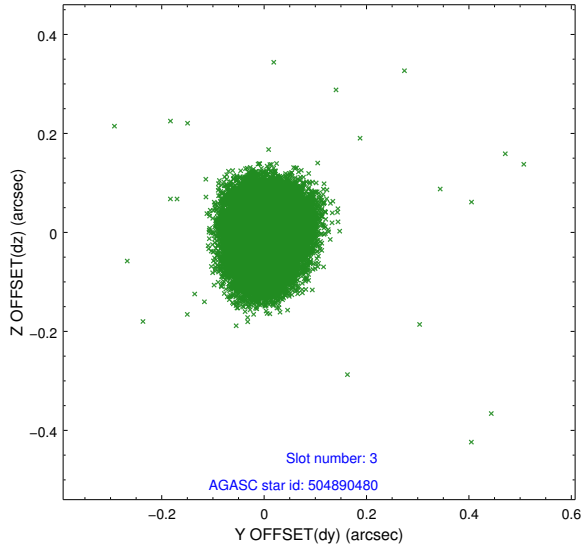
2.3 Aspect

Slot Statistics

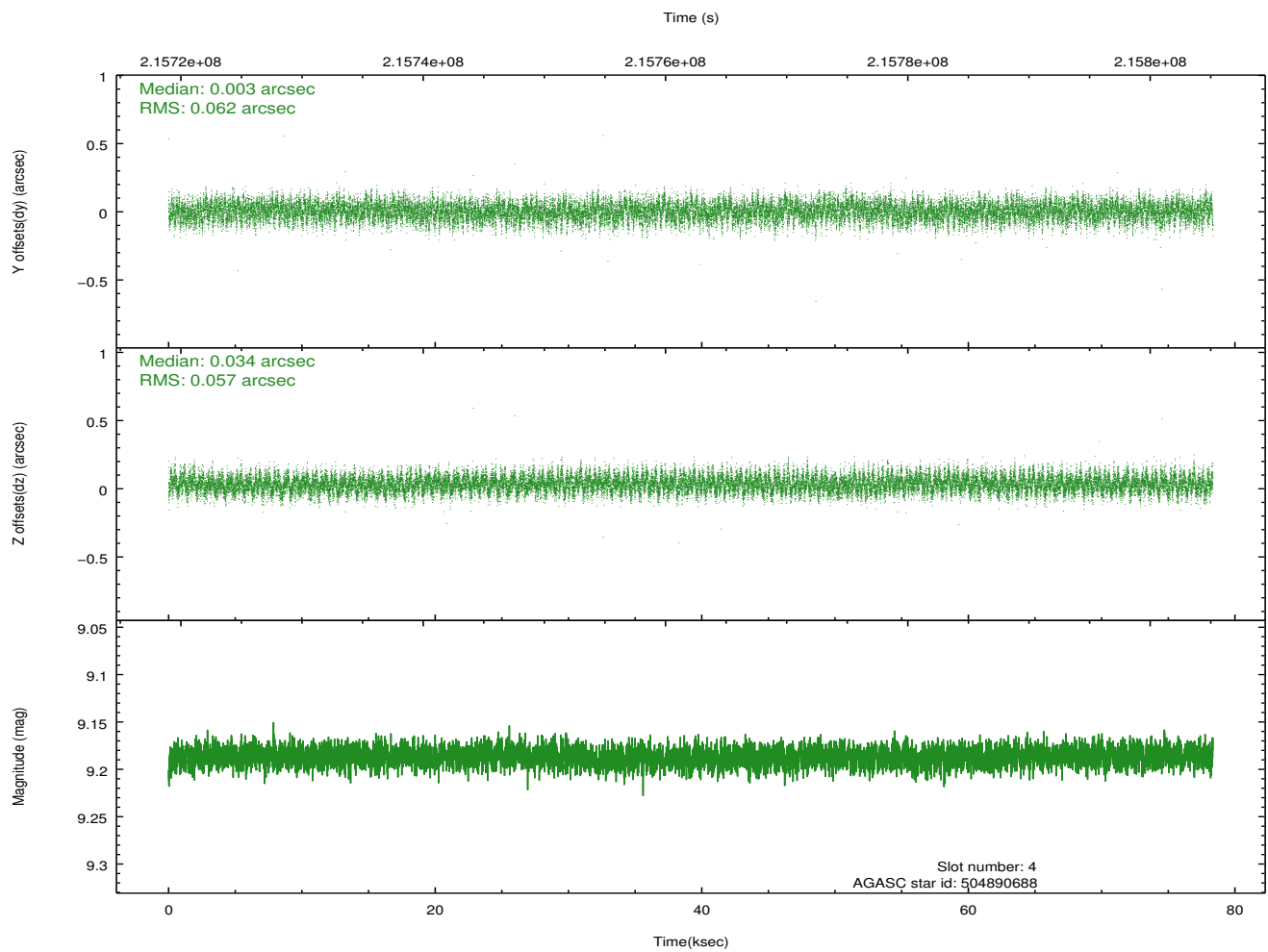
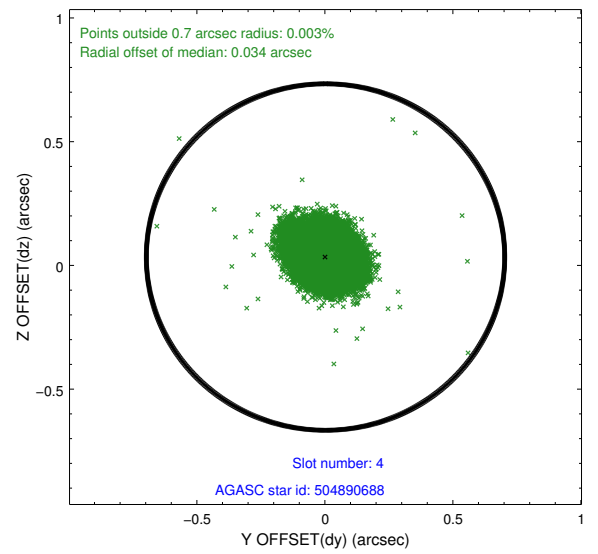
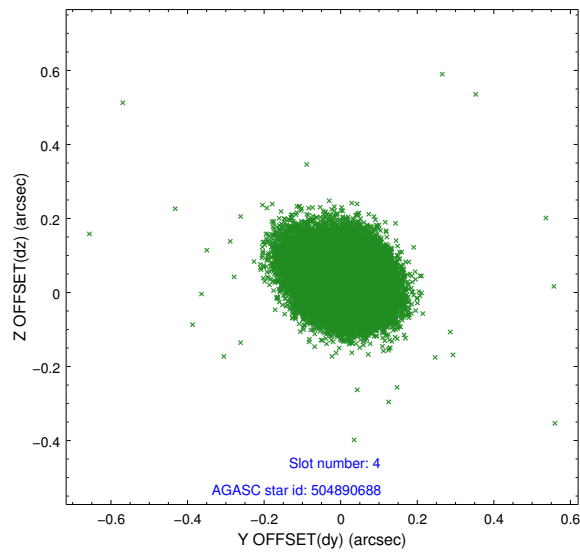
slot	status	id	mag	n_pts	med_dy	med_dz	dr1	dr2	ra	dec	mean_y	mean_z
0	FID	ACIS-S-1	7.18	19110	-0.002	-0.072	0.032	0.058	0.000000	0.000000	937.11	-1727.92
1	FID	ACIS-S-4	7.20	19109	0.059	0.050	0.028	0.061	0.000000	0.000000	2154.55	176.42
2	FID	ACIS-S-5	7.23	19109	-0.084	0.028	0.023	0.051	0.000000	0.000000	-1811.93	169.93
3	GUIDE	504890480	8.16	38212	-0.000	-0.008	0.063	0.101	210.132463	53.768436	-1823.33	-1771.29
4	GUIDE	504890688	9.19	38188	0.003	0.034	0.089	0.143	211.697686	53.837149	1502.41	-2053.42
5	GUIDE	504891480	8.07	38218	-0.065	-0.051	0.070	0.112	210.708012	54.666096	-94.34	1216.22
6	GUIDE	504894408	9.28	38188	-0.022	-0.022	0.097	0.159	211.942794	54.047749	2126.33	-1378.52
7	GUIDE	504894856	8.97	38204	0.087	0.051	0.074	0.119	209.819510	54.132689	-2251.19	-365.32

2.4 Star Slots

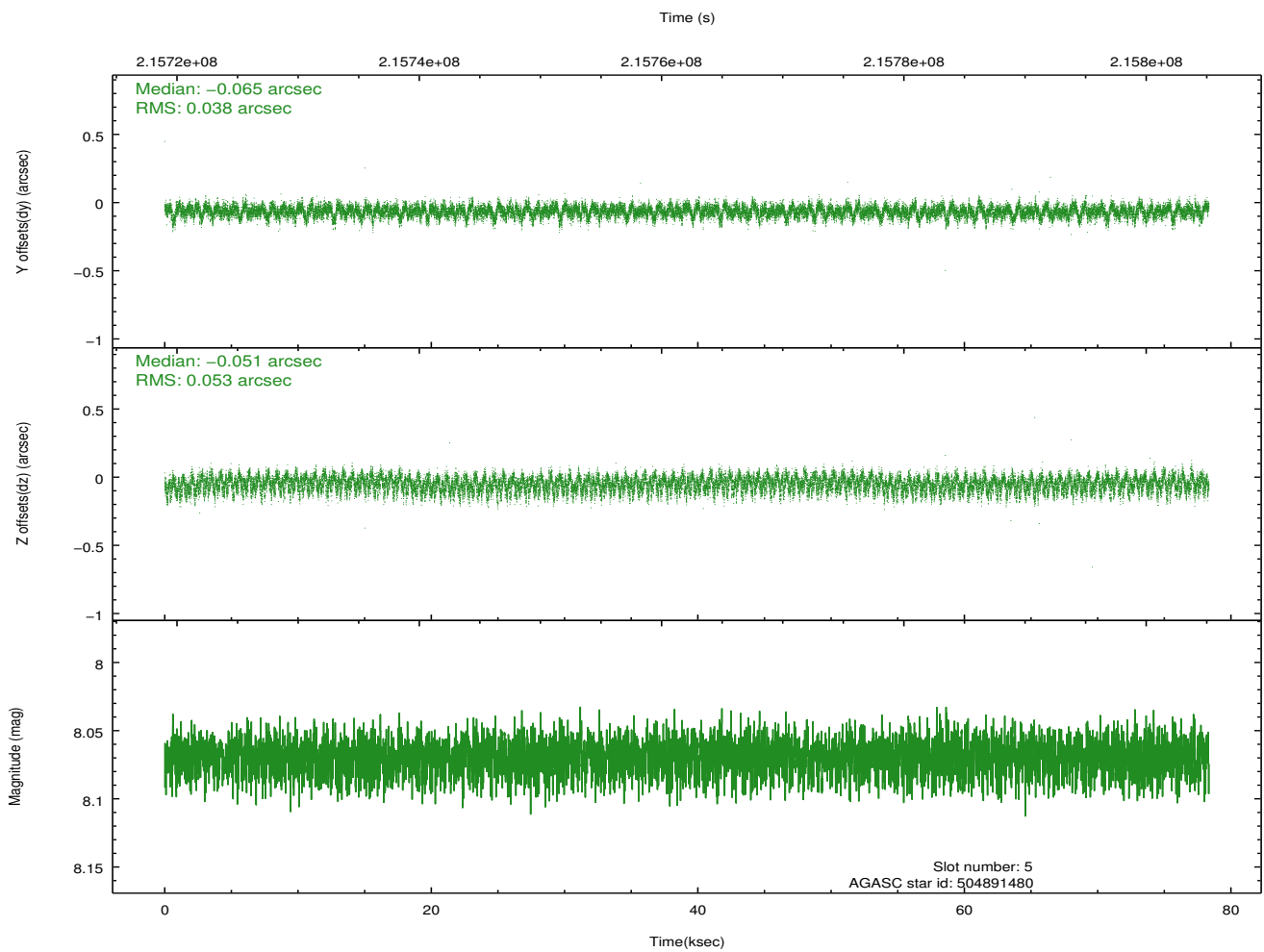
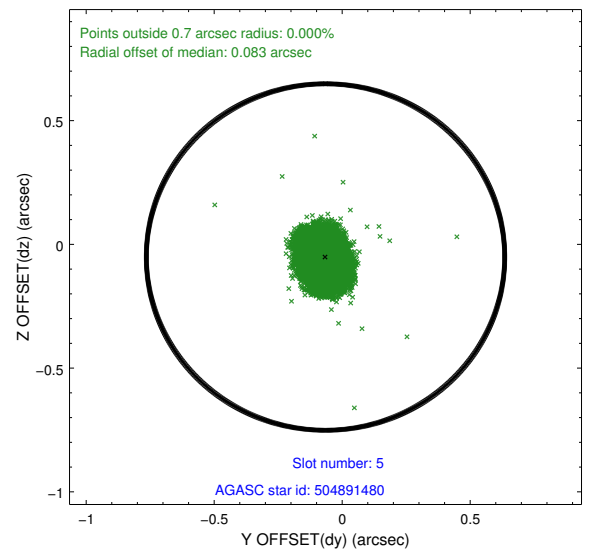
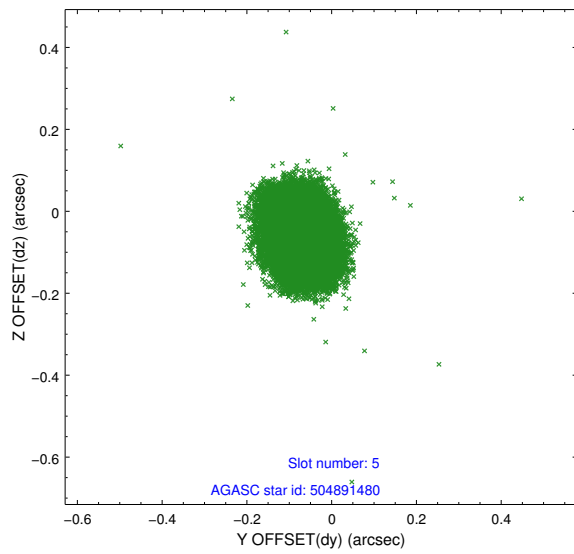
2.4.1 Slot 3



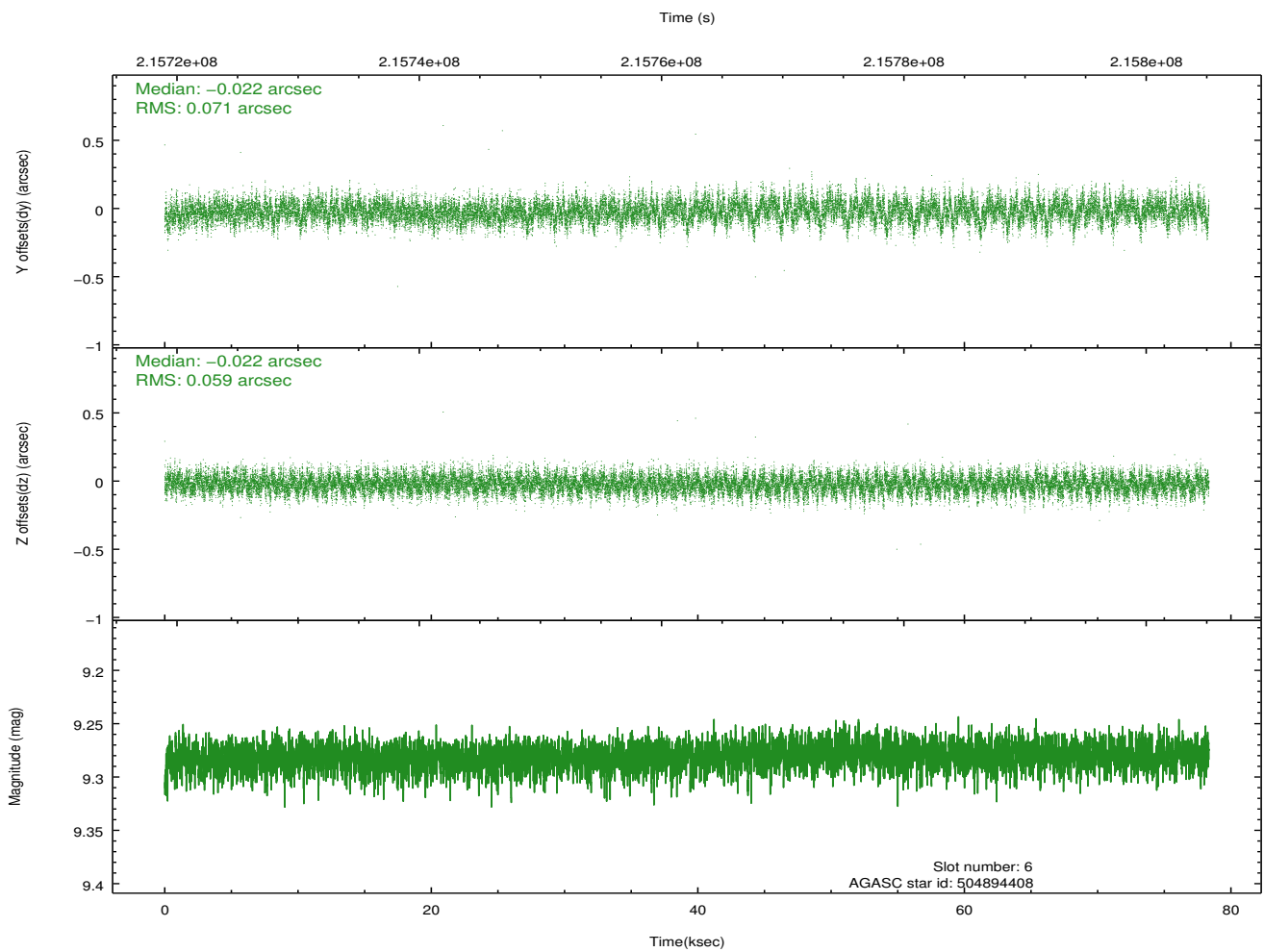
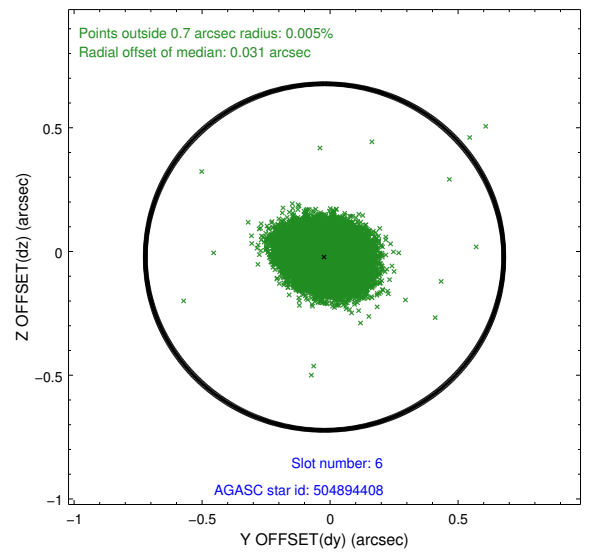
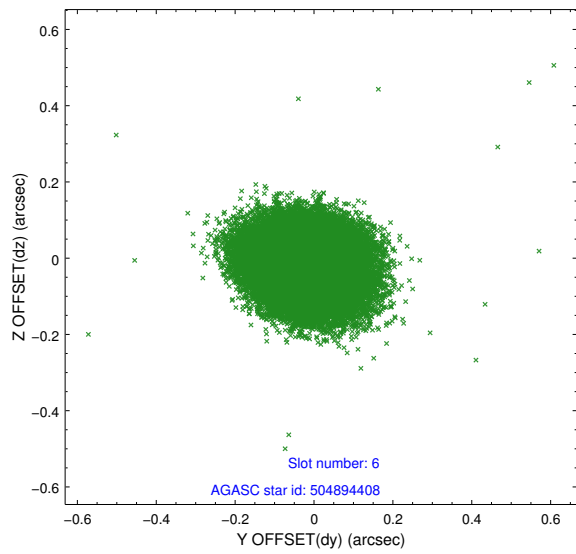
2.4.2 Slot 4



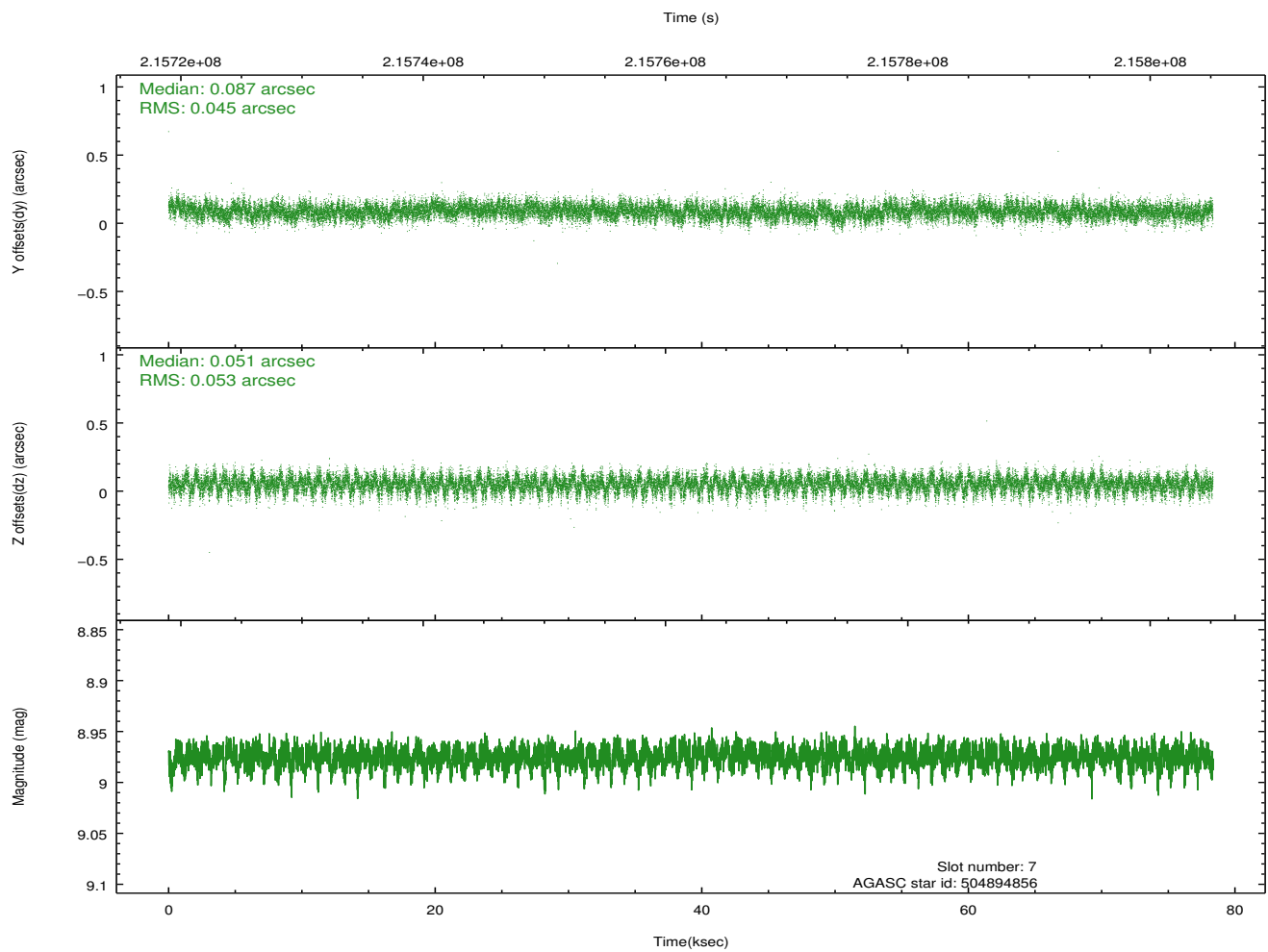
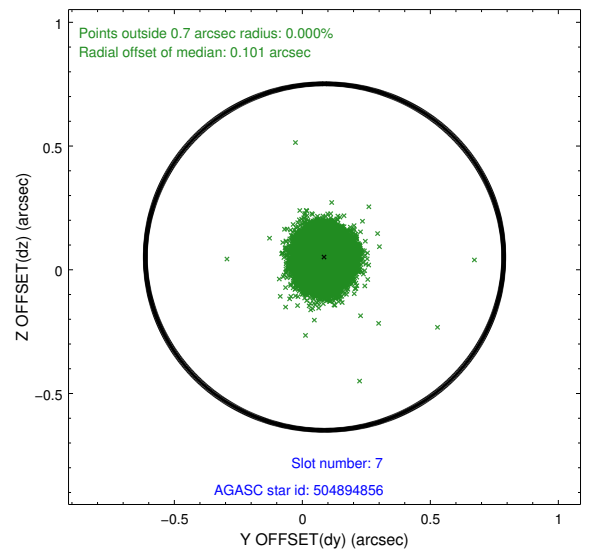
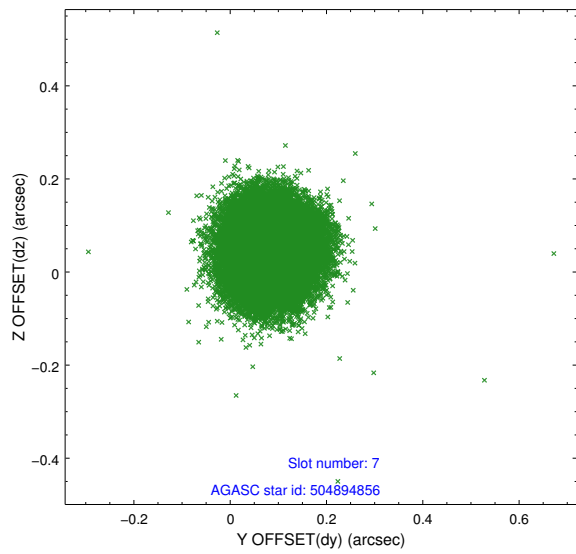
2.4.3 Slot 5



2.4.4 Slot 6

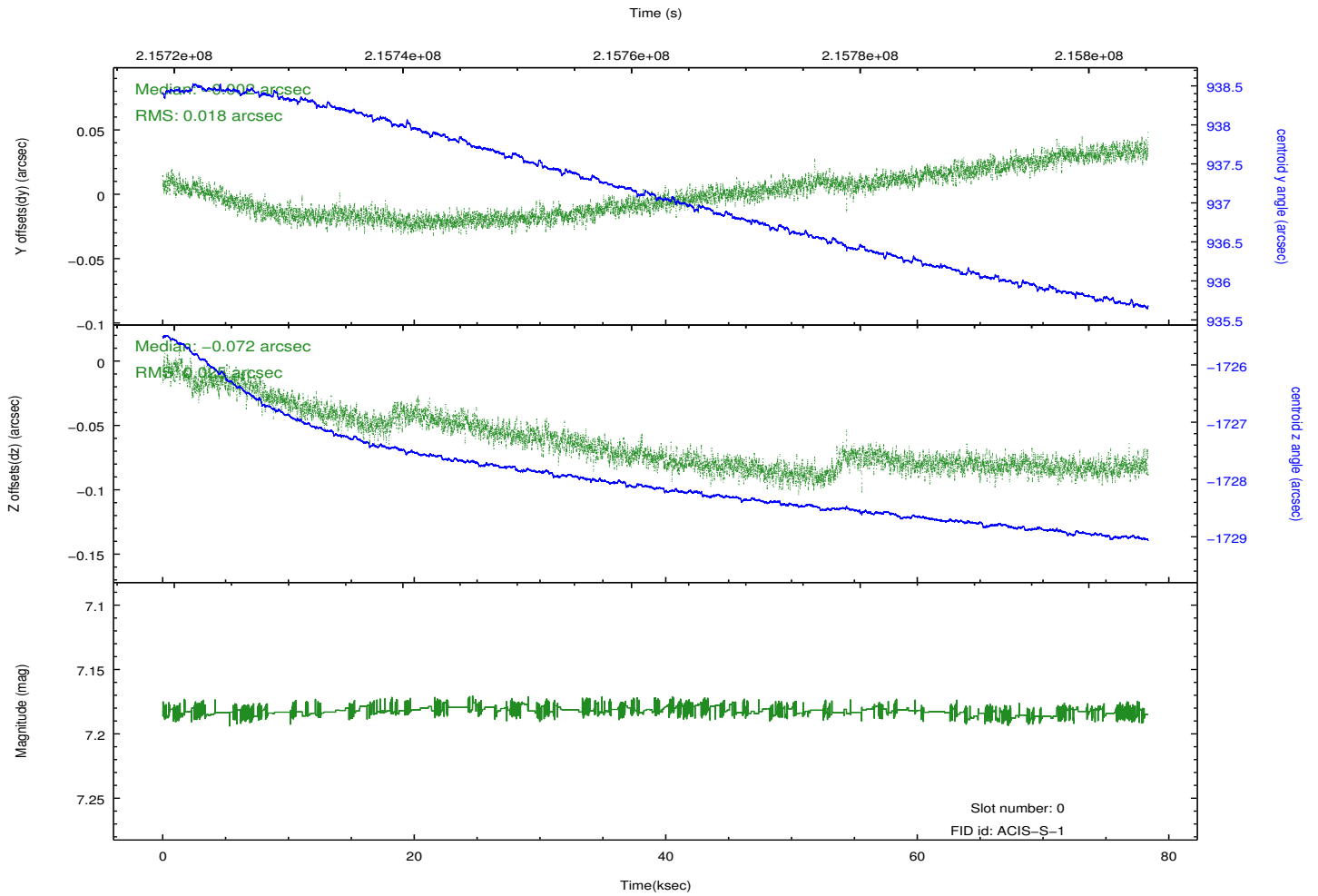
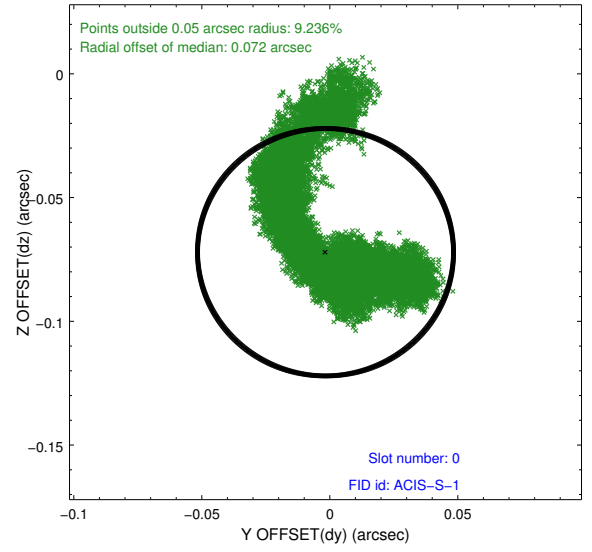
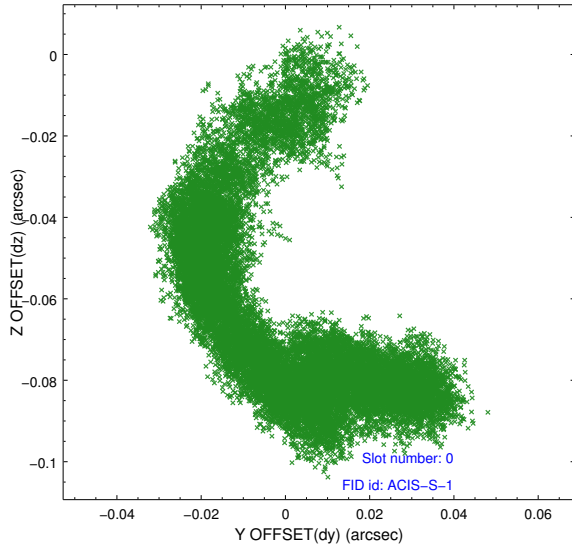


2.4.5 Slot 7

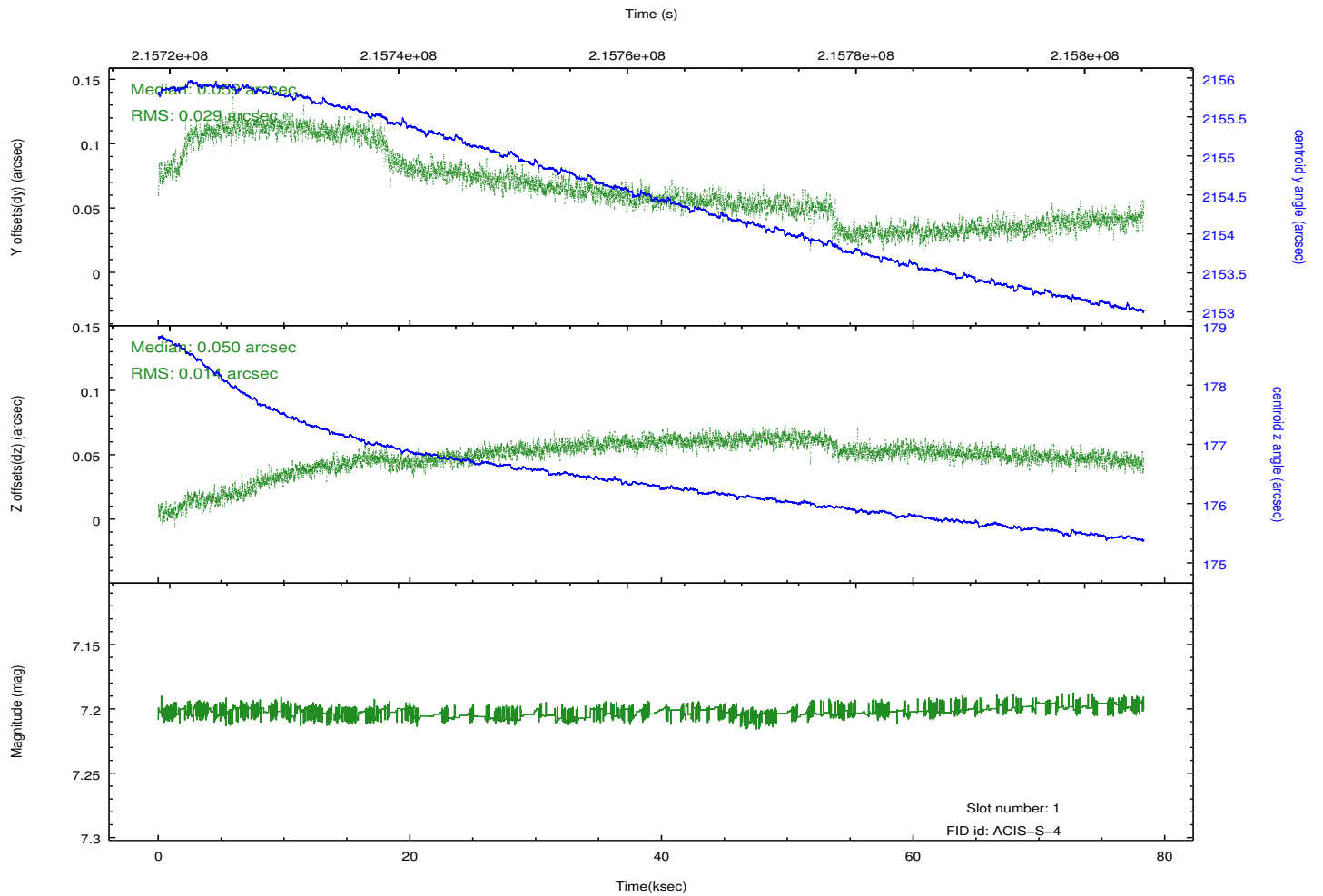
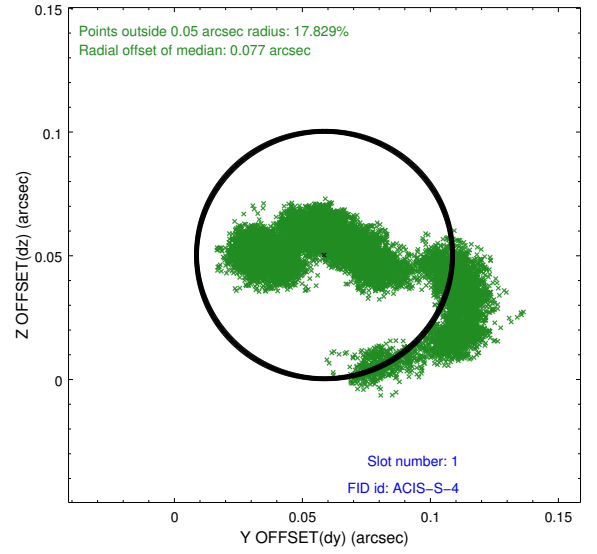
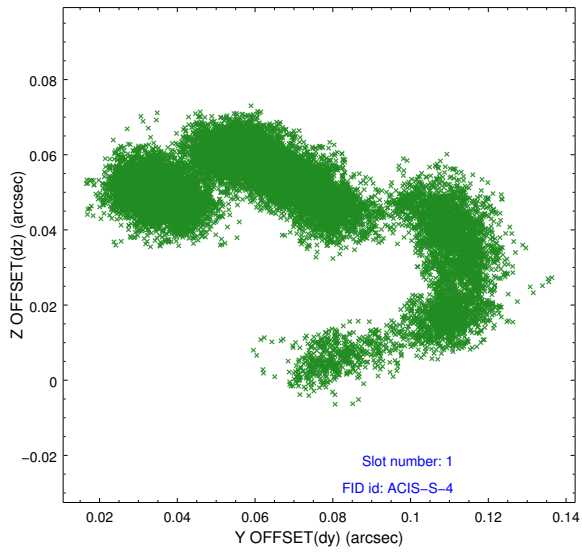


2.5 FID Slots

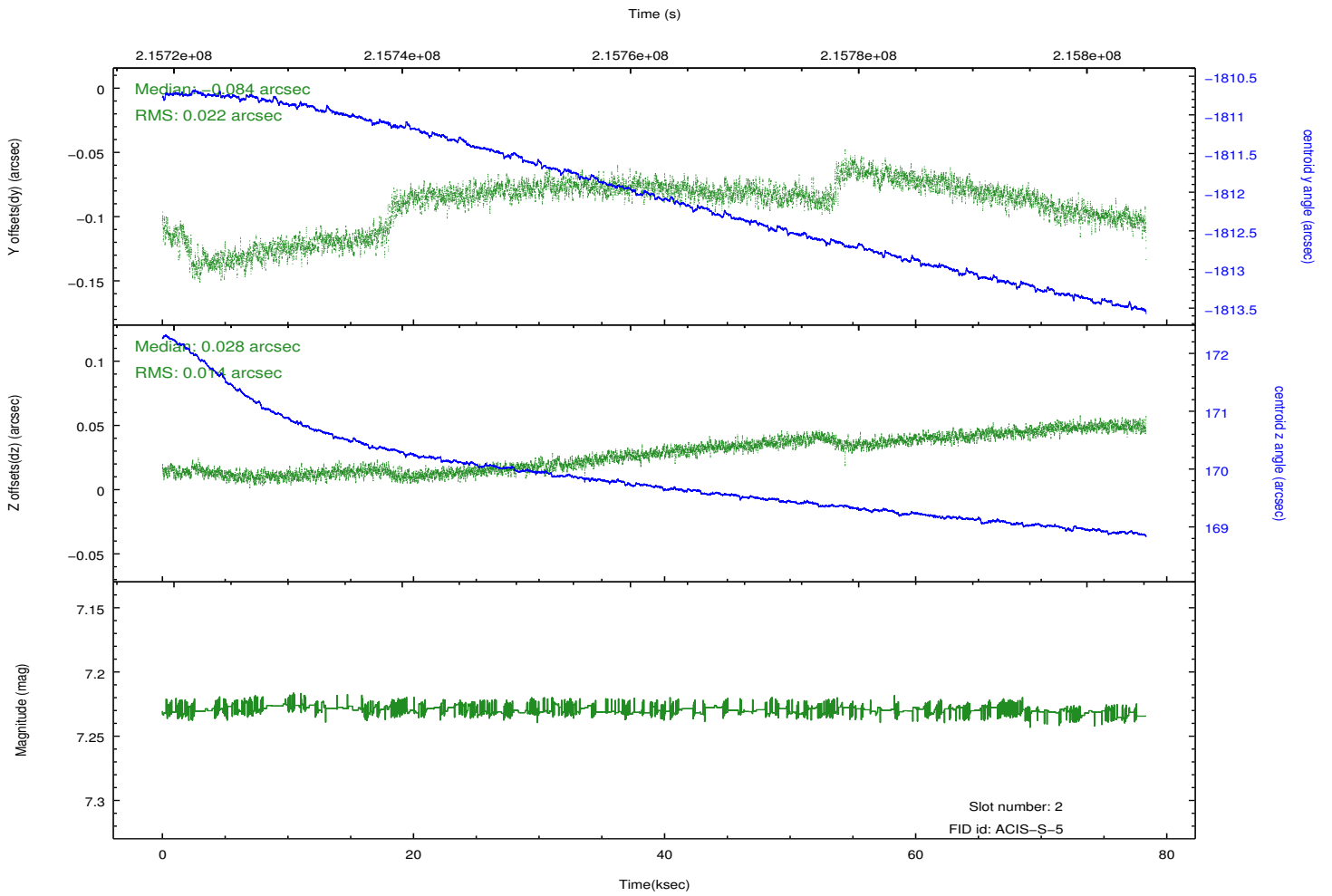
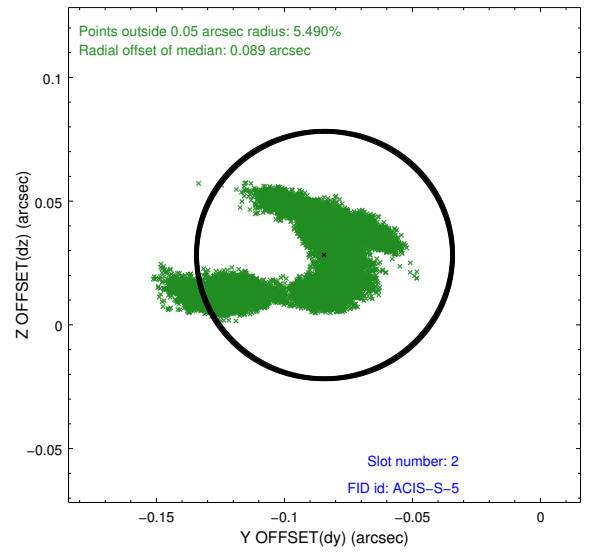
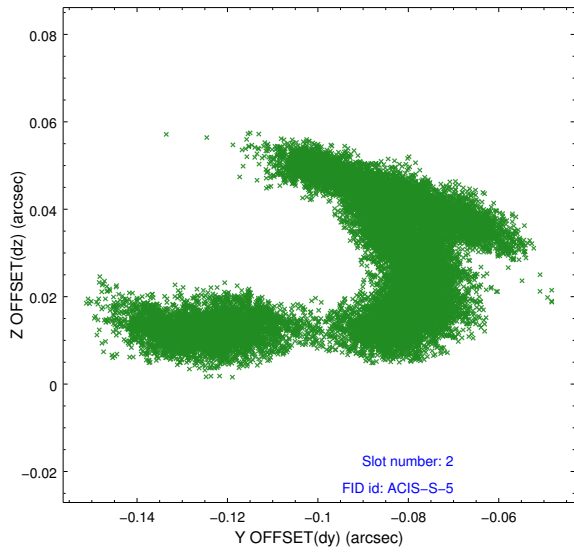
2.5.1 Slot 0



2.5.2 Slot 1



2.5.3 Slot 2



A Summary

A.1 Status

V&V Scientist	Jen Lauer
V&V Date (YYYY-MM-DD)	2013.01.03
V&V Edition	1
V&V Disposition and Status	OK
V&V Charge Time	78.342

A.2 Comments

Monitor constraint not met, missed by one day.