

V&V Reference Report

L2 ASCDS Version : 8.4.5

Observation 5126 - L2 Version 3
Chandra X-Ray Center

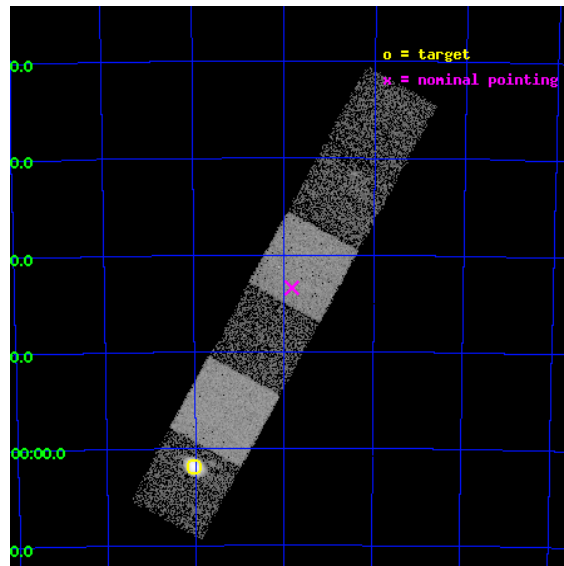
L2 Processing Date : Nov 9 2012

Contents

1	Front	2
2	OBI	3
2.1	OBI	3
2.1.1	Images	3
2.1.2	Bias	3
2.1.3	Parameters	4
2.1.4	Events	4
2.2	Compared Parameters	5
2.3	Aspect	6
2.4	Star Slots	9
2.4.1	Slot 3	9
2.4.2	Slot 4	10
2.4.3	Slot 5	11
2.4.4	Slot 6	12
2.4.5	Slot 7	13
2.5	FID Slots	14
2.5.1	Slot 0	14
2.5.2	Slot 1	15
2.5.3	Slot 2	16
A	Summary	17
A.1	Status	17
A.2	Comments	17

1 Front

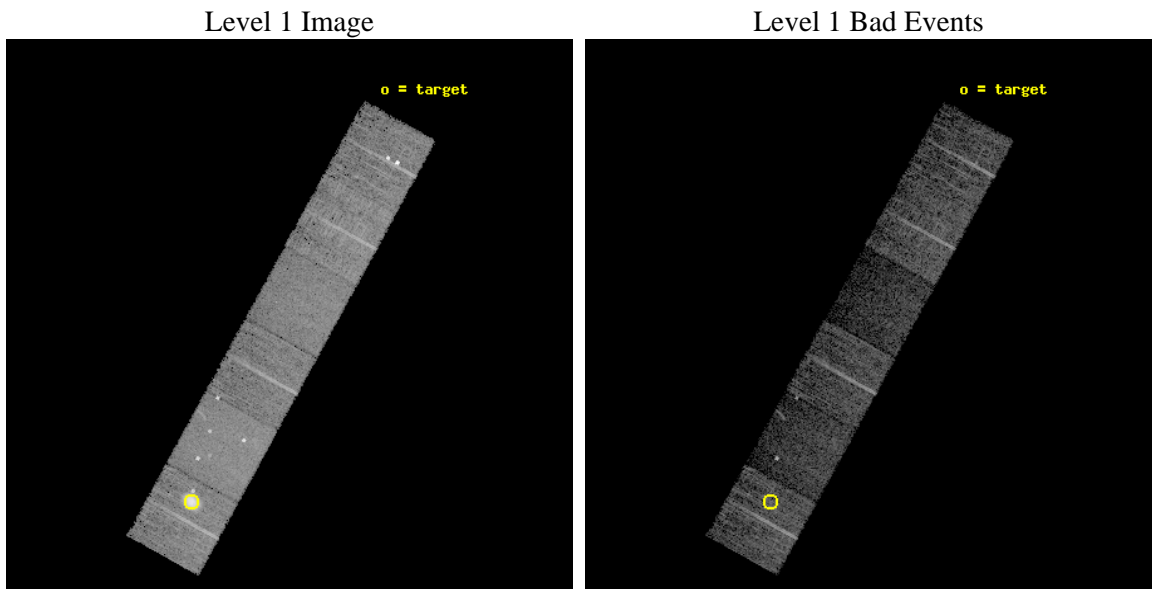
seq_num	590324	Sequence number
obs_id	5126	Observation id
title	AO5A ACIS-S Calibration Observations of E0102-72	Proposal title
observer	Dr. CXC Calibration	Principal investigator
object	E0102-72[S0,-120,21.44,0,0]	Source name
dtycycle	0	
cycle	P	events from which exps? Prim/Second/Both
ra_targ	16.01	Observer's specified target RA [deg]
dec_targ	-72.032028	Observer's specified target Dec [deg]
ra_nom	15.455425072451	Nominal RA [deg]
dec_nom	-71.723632193547	Nominal Dec [deg]
roll_nom	298.84222173904	Nominal Roll [deg]
revision	3	Processing version of data
ontime	8009.5999701619	Sum of GTIs [s]
livetime	7908.1775925376	Livetime [s]
ontime4	8009.5999701619	Sum of GTIs [s]
ontime5	8009.5999701619	Sum of GTIs [s]
ontime6	8009.5999701619	Sum of GTIs [s]
ontime7	8009.5999701619	Sum of GTIs [s]
ontime8	8006.358999908	Sum of GTIs [s]
ontime9	8009.5999701619	Sum of GTIs [s]
l2events	78041	Number of level 2 events



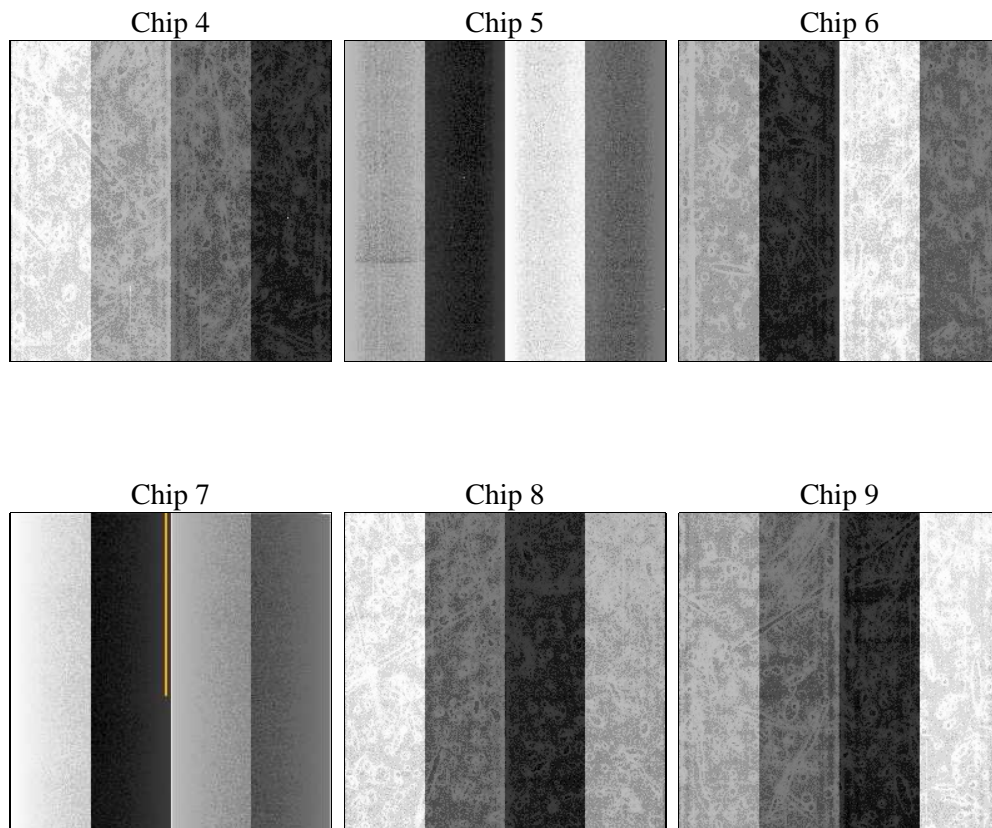
2 OBI

2.1 OBI

2.1.1 Images



2.1.2 Bias



2.1.3 Parameters

obi_num	0	Obi number	sched_exp_time	8250.000000	[s] Scheduled observation exposure time
ascdsver	8.4.5	Processing system revision	ontime	8009.5999701619	Sum of GTIs [s]
caldbver	4.5.2	 	ontime4	8009.5999701619	Sum of GTIs [s]
date	2012-11-09T07:42:36	Date and time of file creation	ontime5	8009.5999701619	Sum of GTIs [s]
revision	3	Processing version of data	ontime6	8009.5999701619	Sum of GTIs [s]
			ontime7	8009.5999701619	Sum of GTIs [s]
			ontime8	8006.358999908	Sum of GTIs [s]
			ontime9	8009.5999701619	Sum of GTIs [s]
			l1events	284281	Number of level 1 events

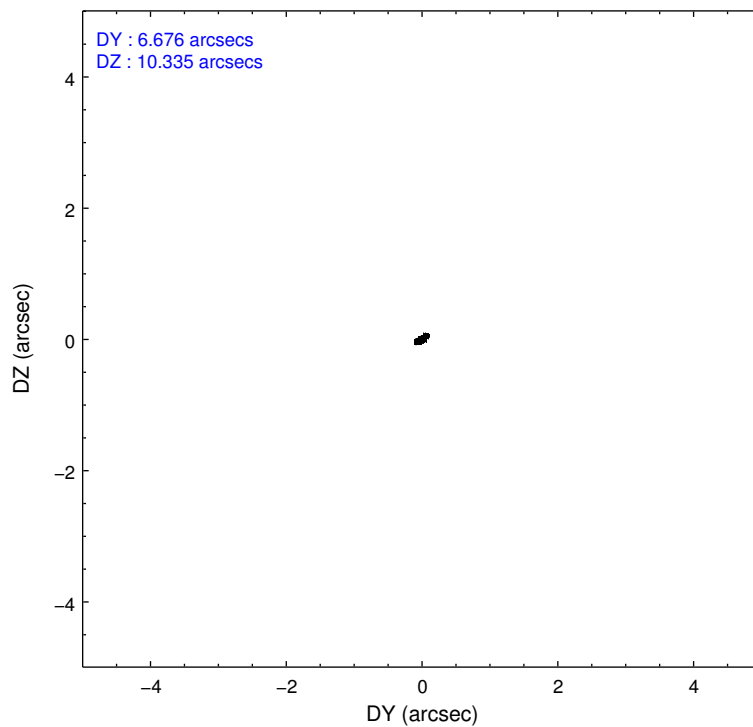
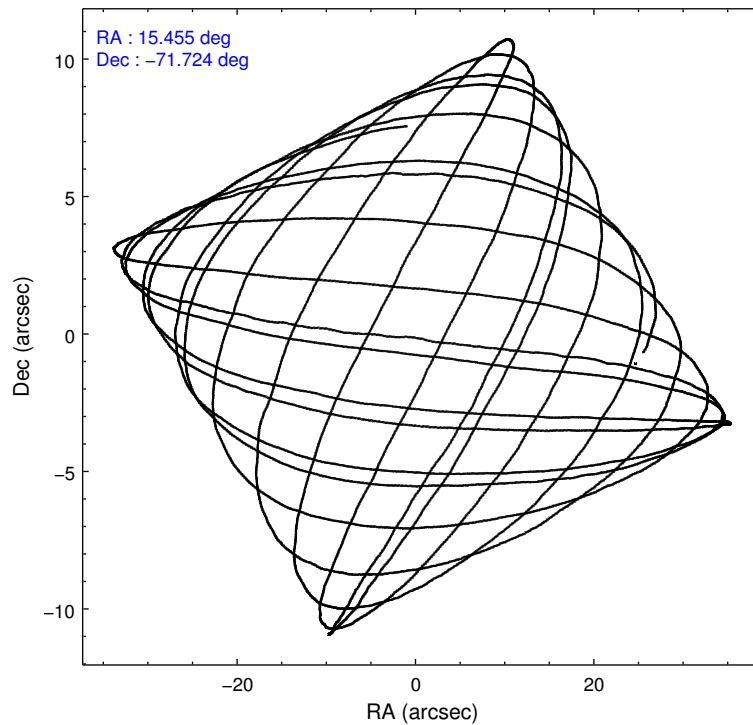
2.1.4 Events

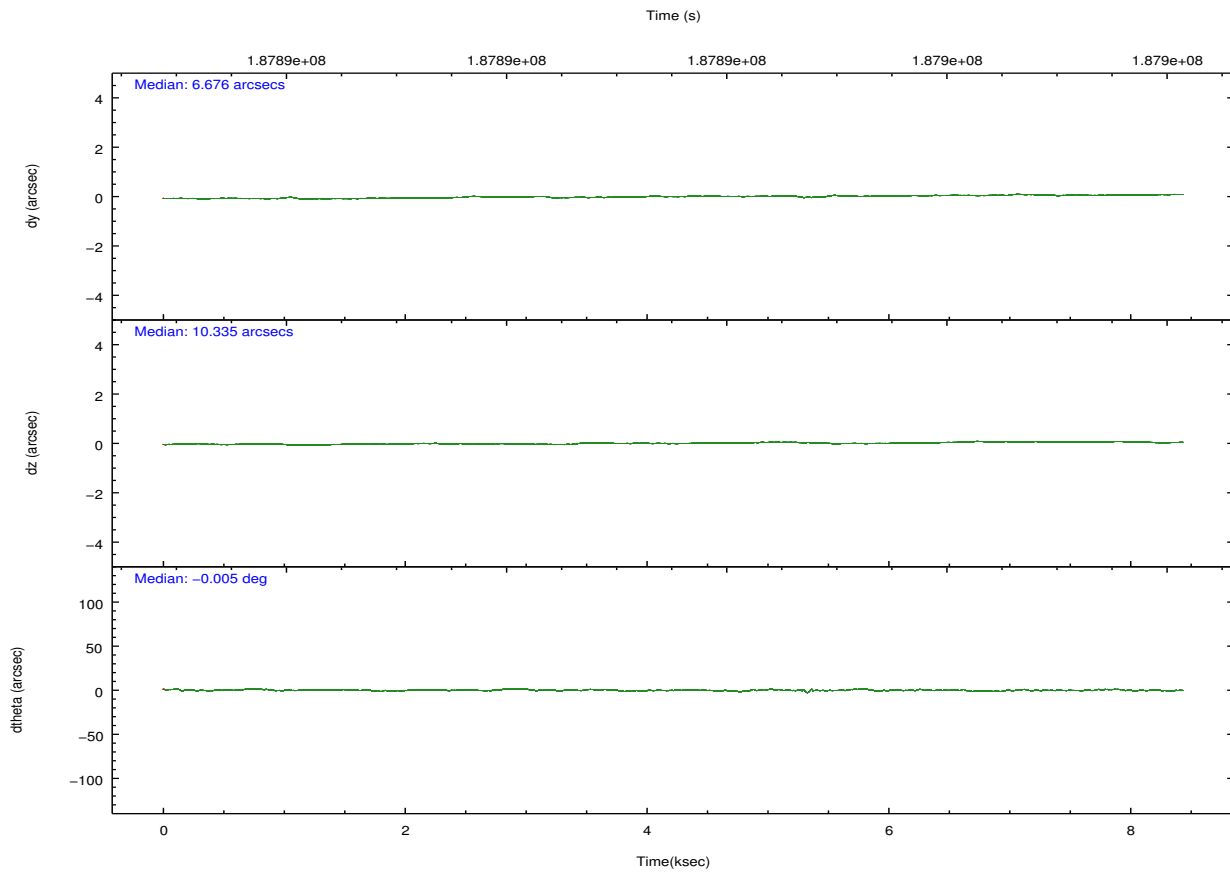
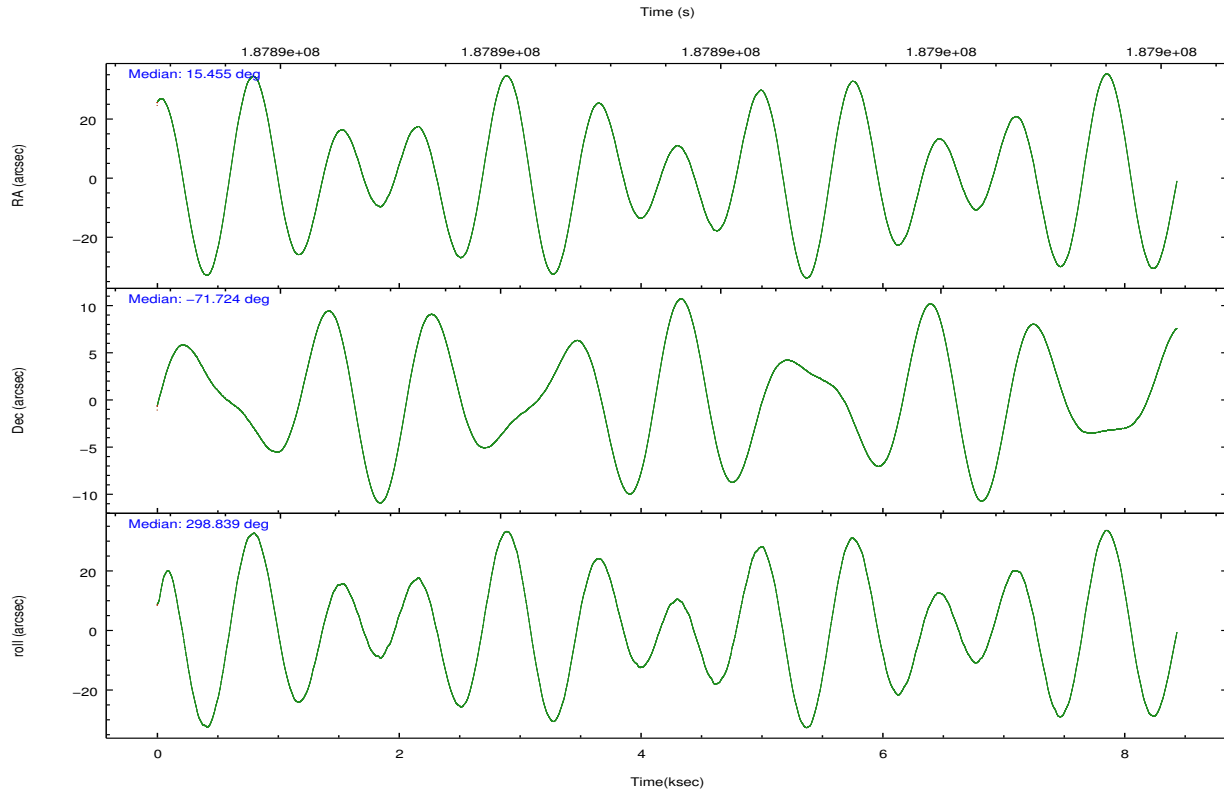
	ccd 4	ccd 5	ccd 6	ccd 7	ccd 8	ccd 9		ccd 4	ccd 5	ccd 6	ccd 7	ccd 8	ccd 9
level 1 events	62605	53359	37272	39128	48811	43106	grade 0 events	19509	5842	1695	2151	3143	8772
rejected events	38894	22549	33154	18196	38018	31865		31%	10%	4%	5%	6%	20%
rejected %	62%	42%	88%	46%	77%	73%	grade 1 events	133	700	13	38	31	65
								0%	1%	0%	0%	0%	0%
							grade 2 events	2182	8281	838	4200	2384	793
								3%	15%	2%	10%	4%	1%
							grade 3 events	679	1594	421	2083	1202	445
								1%	2%	1%	5%	2%	1%
							grade 4 events	680	1558	420	1983	1154	471
								1%	2%	1%	5%	2%	1%
							grade 5 events	1325	3867	1289	3968	1925	1439
								2%	7%	3%	10%	3%	3%
							grade 6 events	676	13547	745	10524	2911	764
								1%	25%	1%	26%	5%	1%
							grade 7 events	37421	17970	31851	14181	36061	30357
								59%	33%	85%	36%	73%	70%

2.2 Compared Parameters

Parameter	Planned	Actual	Parameter	Planned	Actual
Instrument	ACIS	ACIS	Obspar format version number	7	7
Detector	ACIS-456789	ACIS-456789	Obspar file type	PREDICTED	ACTUAL
Grating	NONE	NONE	Obspar update status	NONE	UPDATED
Data mode	VFAINT	VFAINT	Number of optional ACIS chips dropped	0	0
Observation mode	POINTING	POINTING	On-chip summing requested	N	N
[deg] Pointing RA	15.380637	15.45542507245108	Subarray requested	NONE	NONE
[deg] Pointing Dec	-71.709903	-71.72363219354666	Alternating exposures requested	N	N
[deg] Pointing Roll	298.614603	298.8422217390396	[s] Primary exposure time	0.000000	3.2
[s] Window start time (MET)	181353664.184000	181353664.184000			
[s] Window stop time (MET)	189216064.184000	189216064.184000			
[mm] SIM focus pos	-0.684267	-0.6828225247311905			
[mm] SIM defocus	0	0.001444936568705701			
[mm] SIM translation stage pos	-190.132523	-190.1400660498719			
[mm] SIM translation stage offset	0	0.00754346686406393			
[s] Observation start time (MET)	187889478.184000	187889102.96151			
Observation start date	2003-12-15T15:30:14	2003-12-15T15:25:02			
[s] Observation end time (MET)	187897728.184000	187897862.61189			
Observation end date	2003-12-15T17:47:44	2003-12-15T17:51:02			
Read mode	TIMED	TIMED			

2.3 Aspect



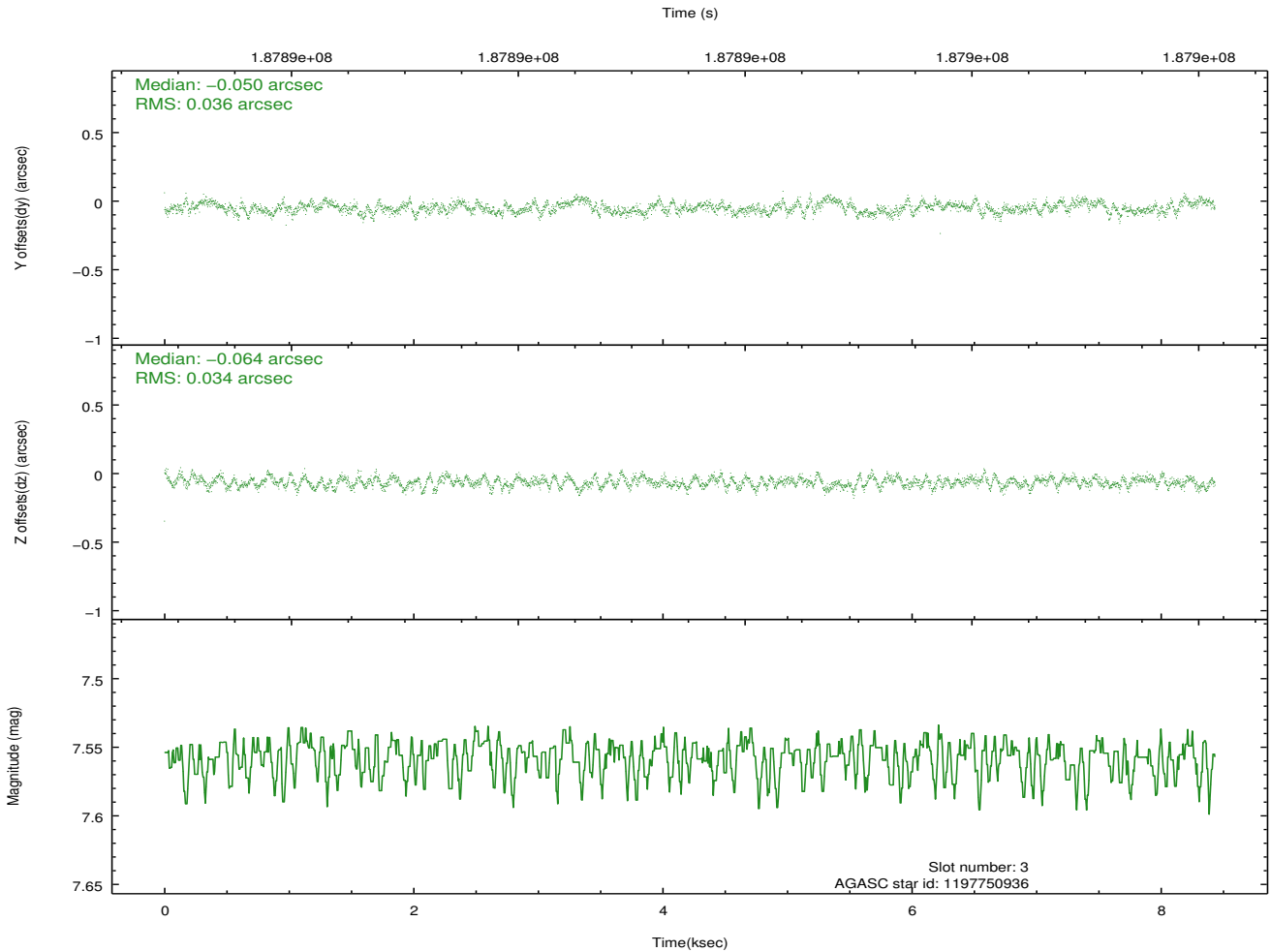
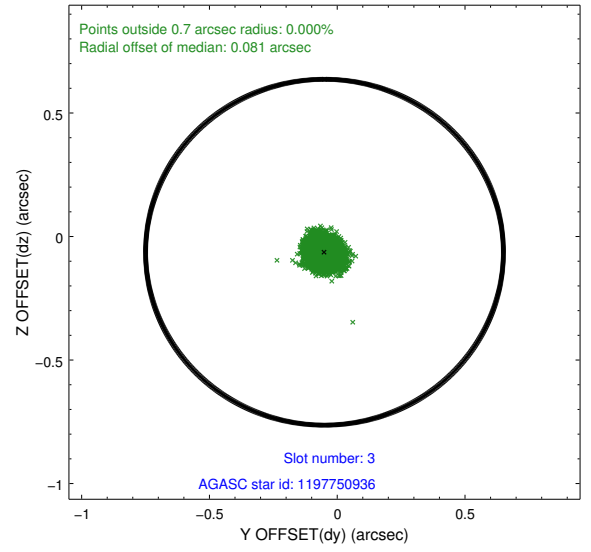
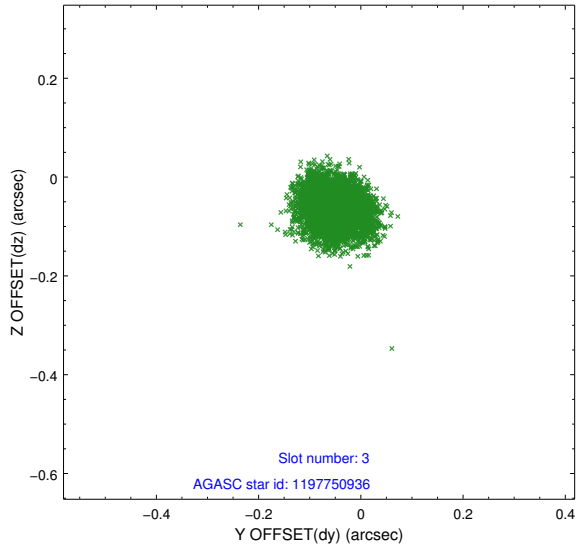


Slot Statistics

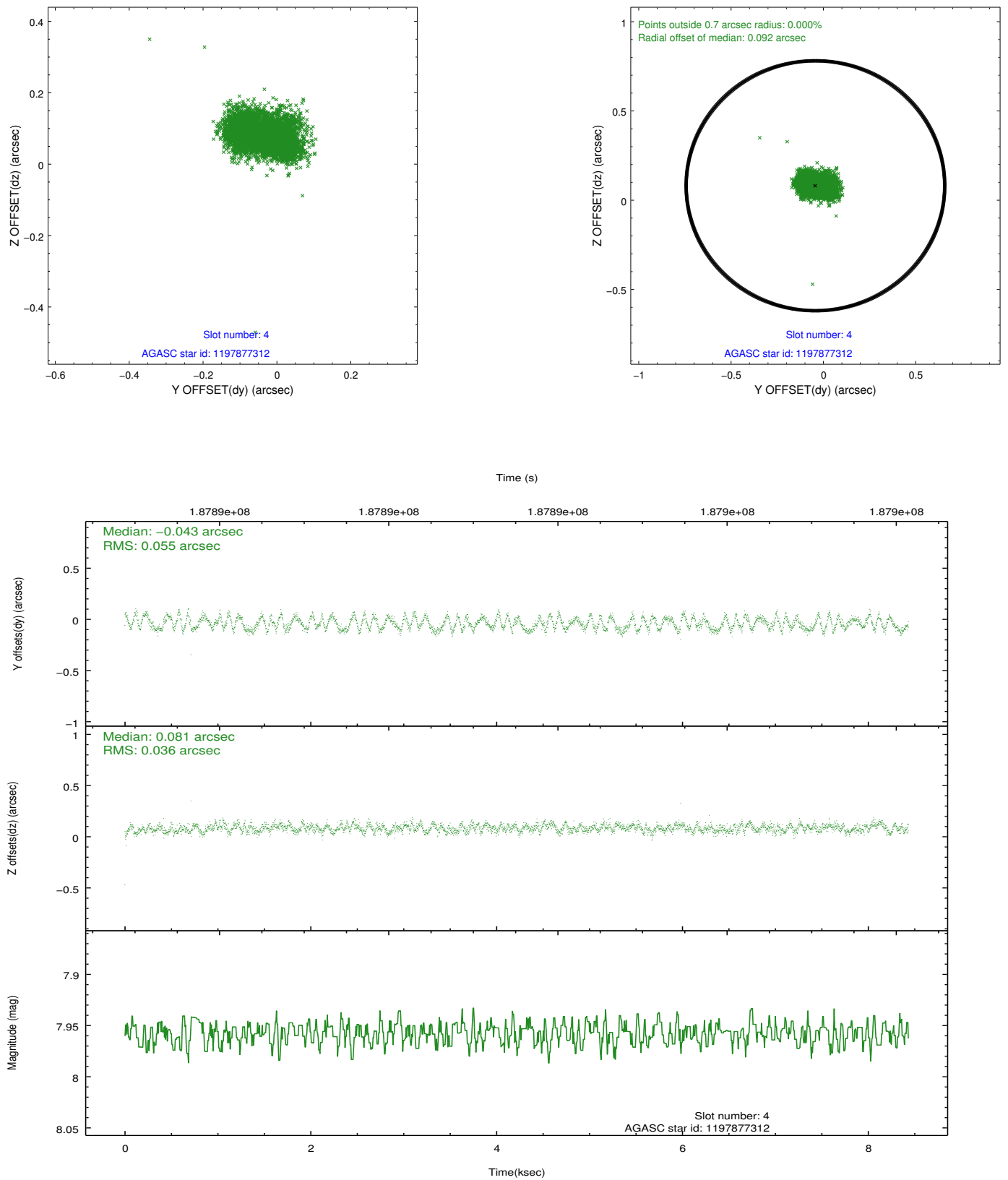
slot	status	id	mag	n_pts	med_dy	med_dz	dr1	dr2	ra	dec	mean_y	mean_z
0	FID	ACIS-S-2	7.10	2058	-0.059	-0.016	0.008	0.013	0.000000	0.000000	-759.44	-1731.62
1	FID	ACIS-S-4	7.20	2058	0.075	0.032	0.007	0.014	0.000000	0.000000	2153.64	176.28
2	FID	ACIS-S-5	7.23	2058	-0.047	-0.008	0.007	0.013	0.000000	0.000000	-1811.46	170.59
3	GUIDE	1197750936	7.56	4114	-0.050	-0.064	0.053	0.084	15.387940	-71.549550	-502.31	283.67
4	GUIDE	1197877312	7.96	4115	-0.043	0.081	0.070	0.107	16.362782	-70.933298	-1892.95	2348.51
5	GUIDE	1197884536	8.49	4115	0.030	0.025	0.058	0.092	17.160729	-71.835289	1378.63	1523.98
6	GUIDE	1197884712	8.32	4115	0.025	0.050	0.061	0.100	16.087398	-72.252690	2091.56	-256.58
7	GUIDE	1197885328	7.23	4114	0.036	-0.090	0.059	0.089	16.283090	-71.733943	571.20	849.16

2.4 Star Slots

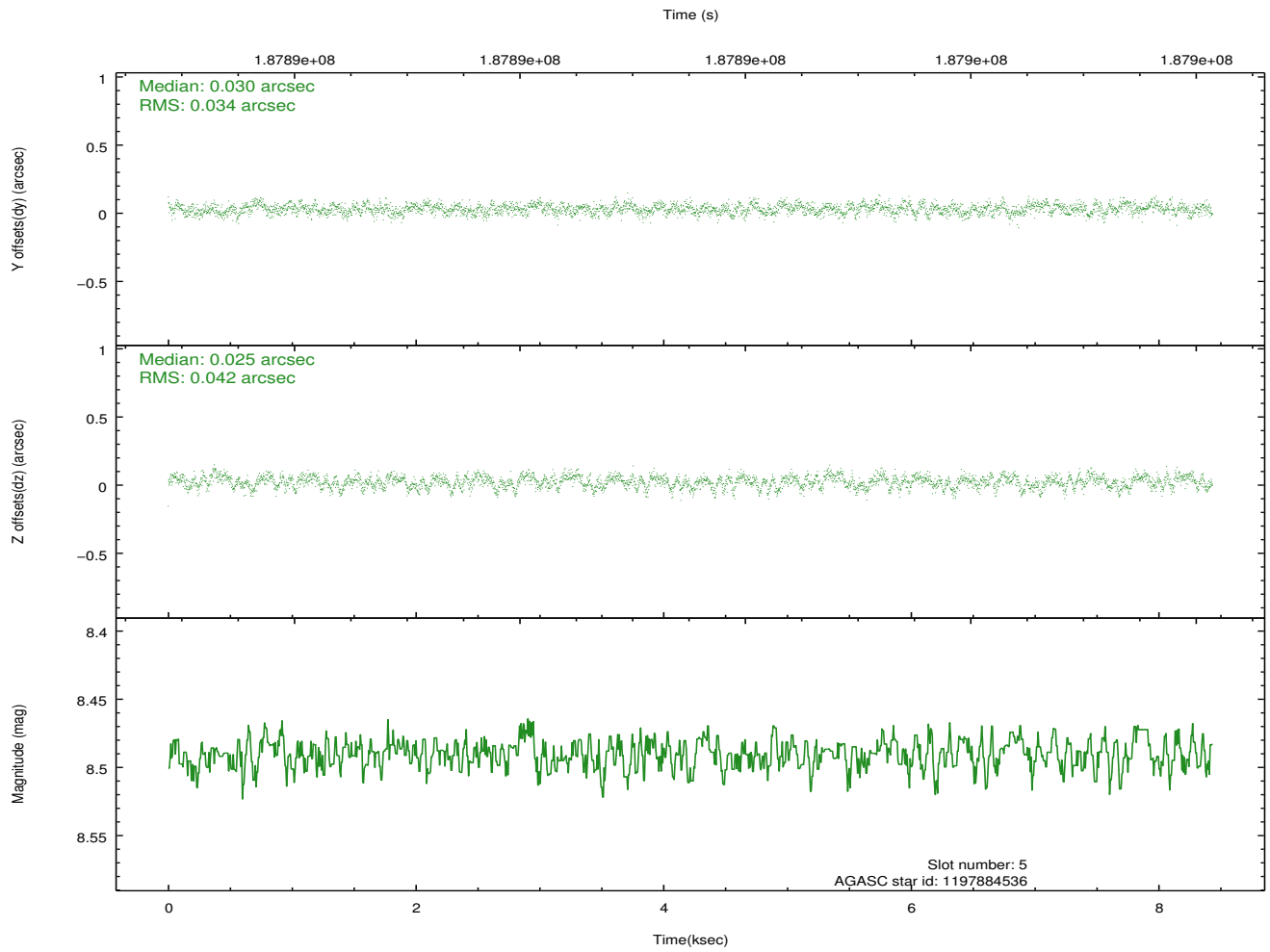
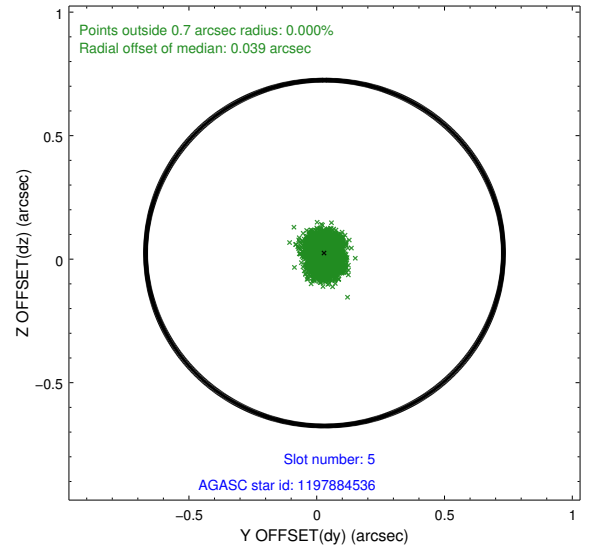
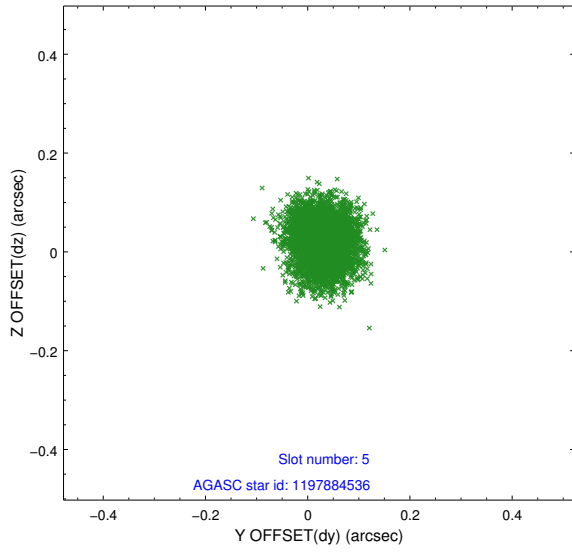
2.4.1 Slot 3



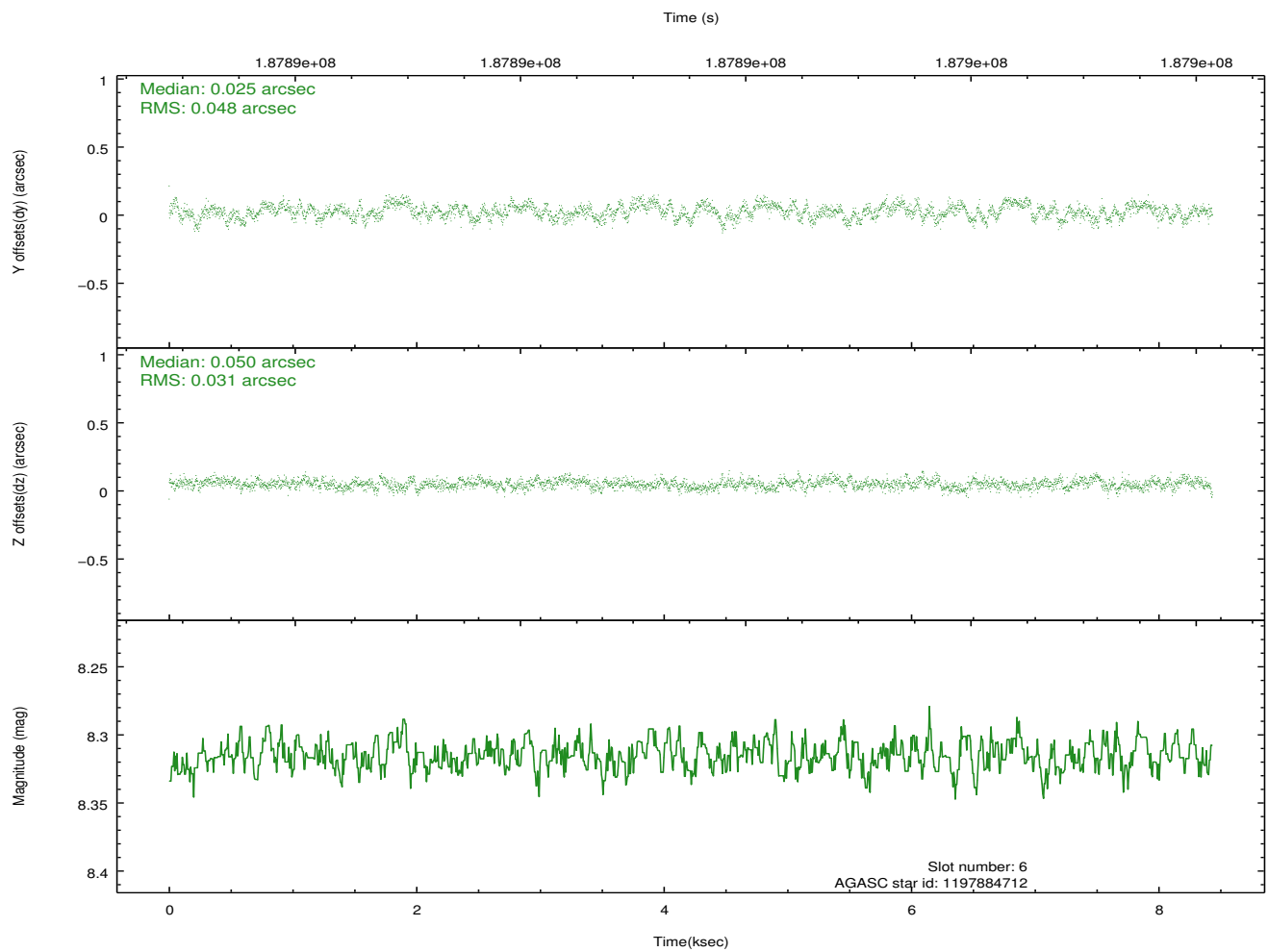
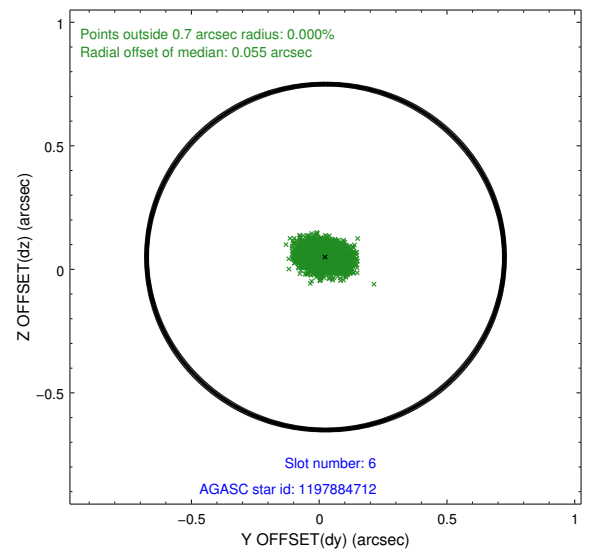
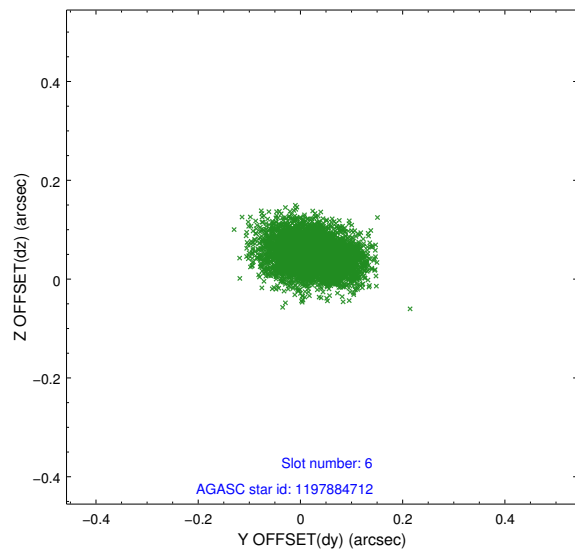
2.4.2 Slot 4



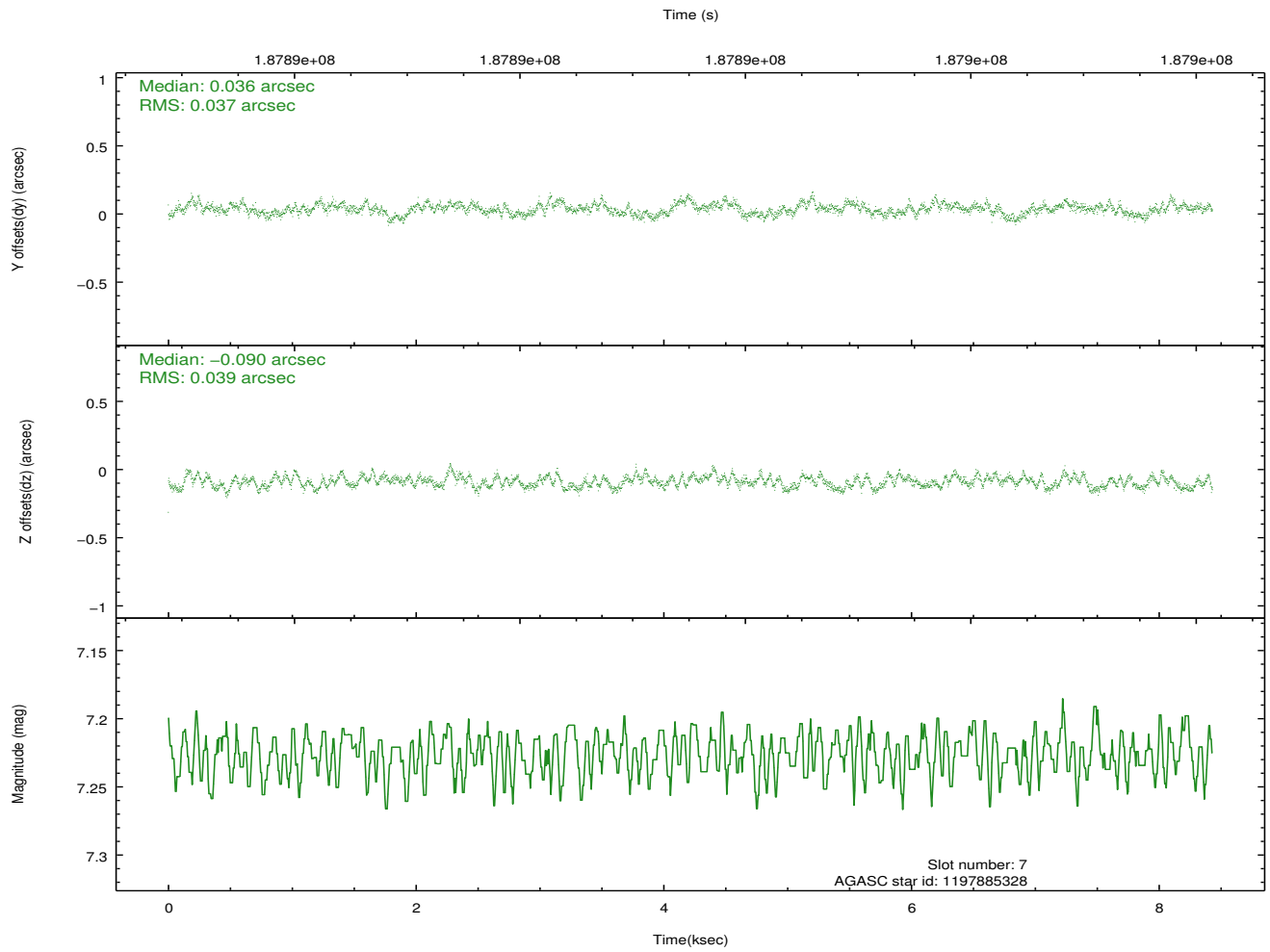
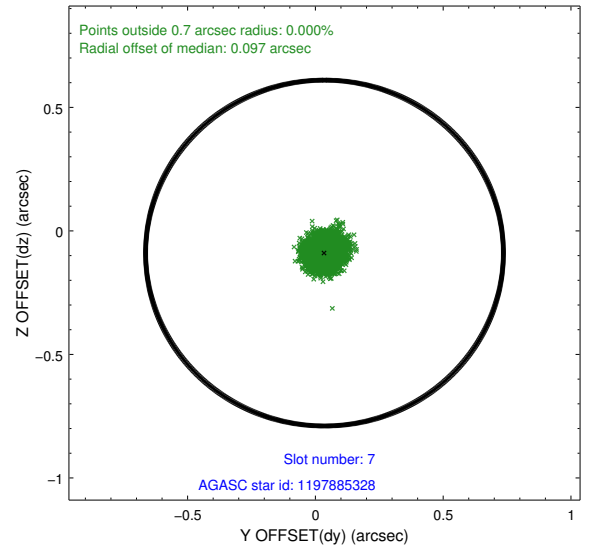
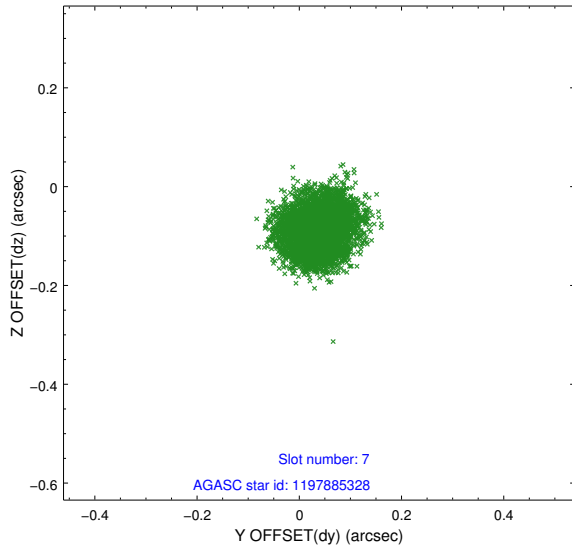
2.4.3 Slot 5



2.4.4 Slot 6

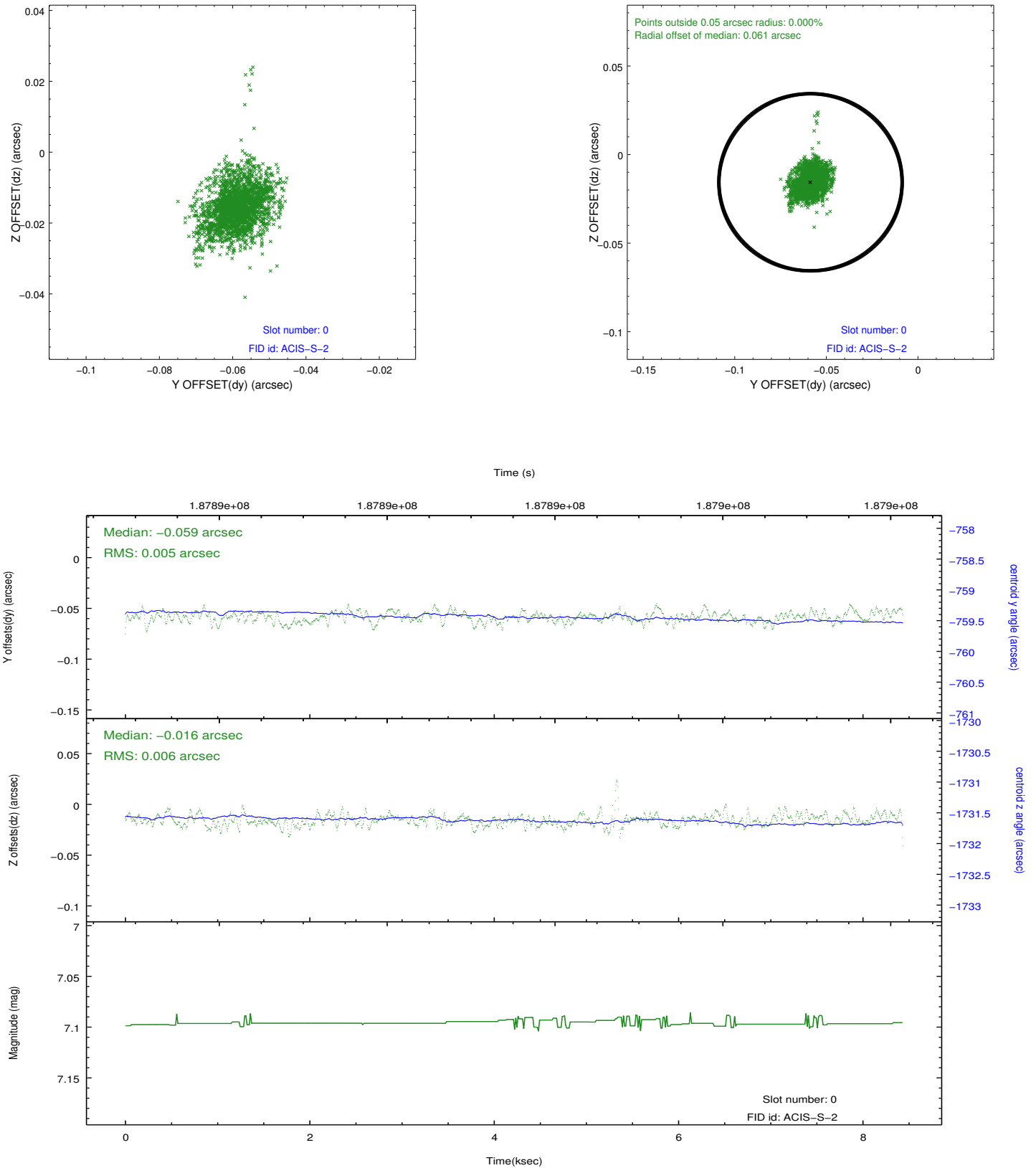


2.4.5 Slot 7

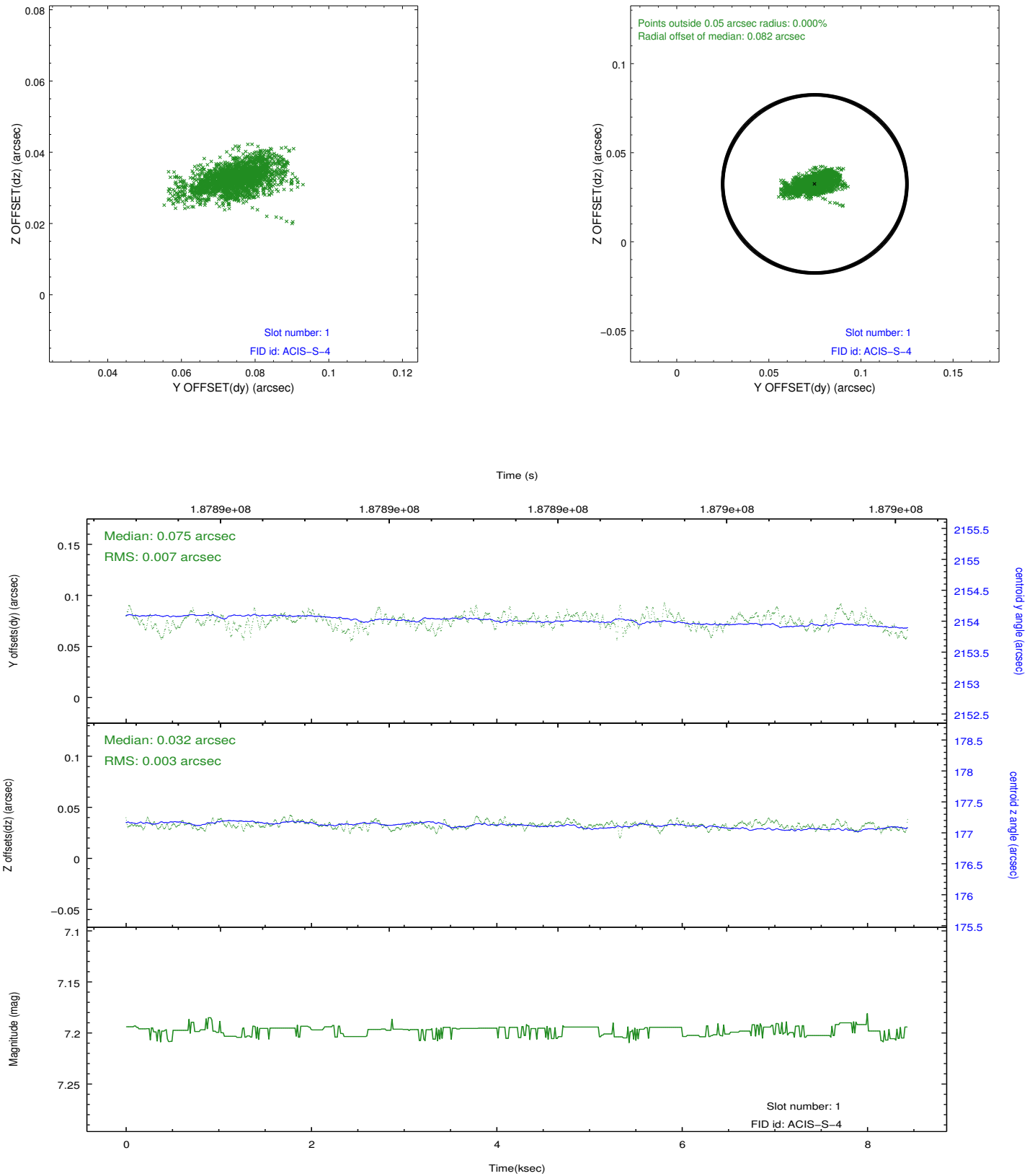


2.5 FID Slots

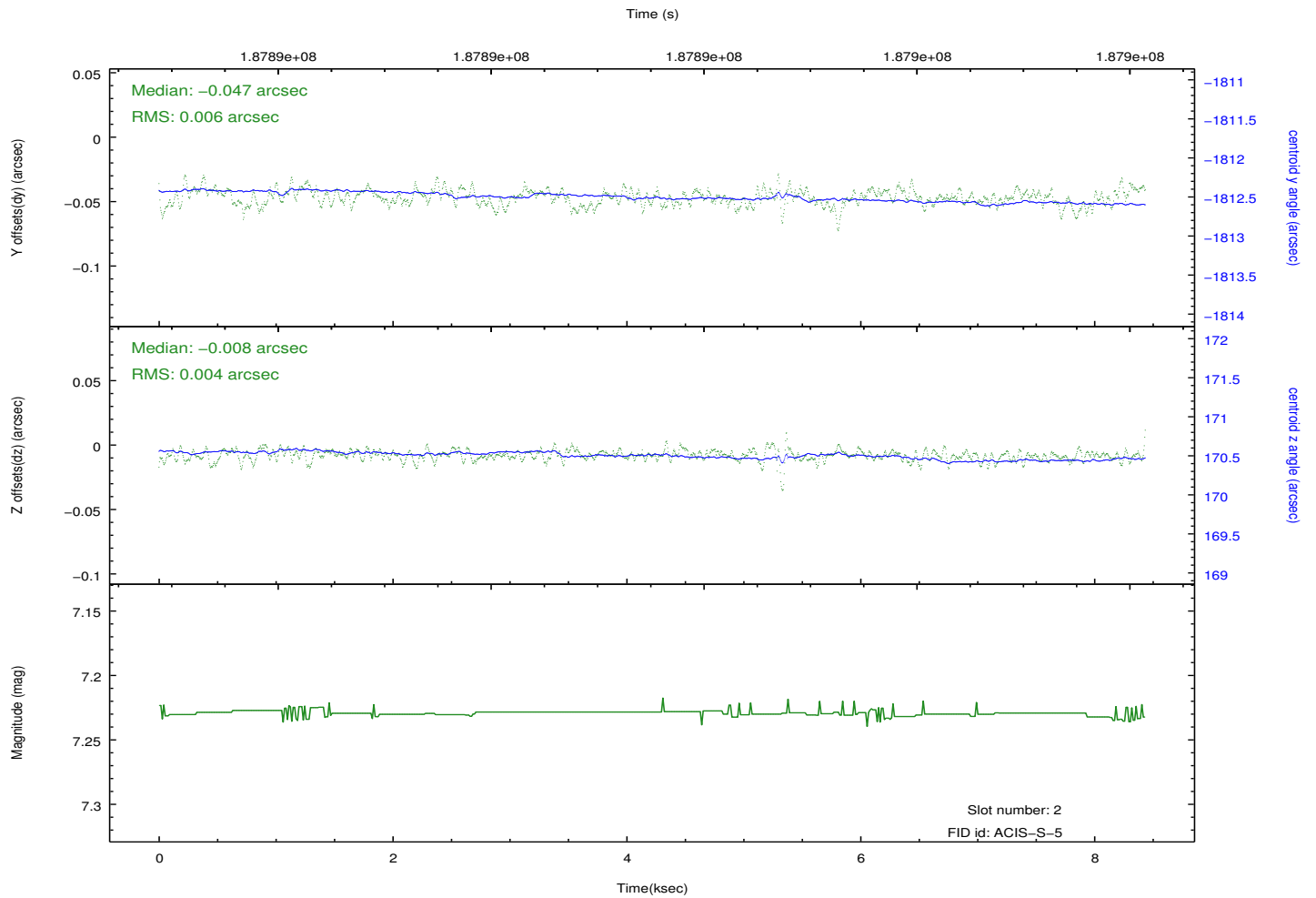
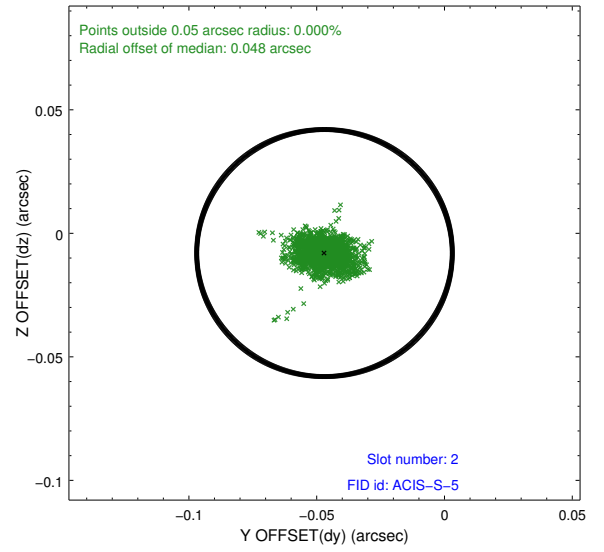
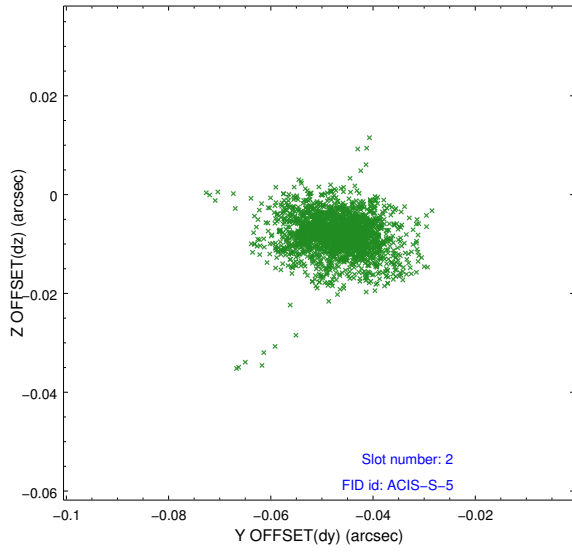
2.5.1 Slot 0



2.5.2 Slot 1



2.5.3 Slot 2



A Summary

A.1 Status

V&V Scientist	Jen Lauer
V&V Date (YYYY-MM-DD)	2012.12.03
V&V Edition	1
V&V Disposition and Status	OK
V&V Charge Time	8.012

A.2 Comments

Window constraint met.