

V&V Reference Report

L2 ASCDS Version : 10.4.2.1

Observation 51556 - L2 Version 1
Chandra X-Ray Center

L2 Processing Date : Oct 19 2015

Contents

1	Front	2
2	OBI	3
2.1	OBI	3
2.1.1	Images	3
2.1.2	Bias	3
2.1.3	Parameters	4
2.1.4	Events	4
2.2	Compared Parameters	5
2.3	Star Slots	6
2.4	FID Slots	6
A	Summary	7
A.1	Status	7
A.2	Comments	7

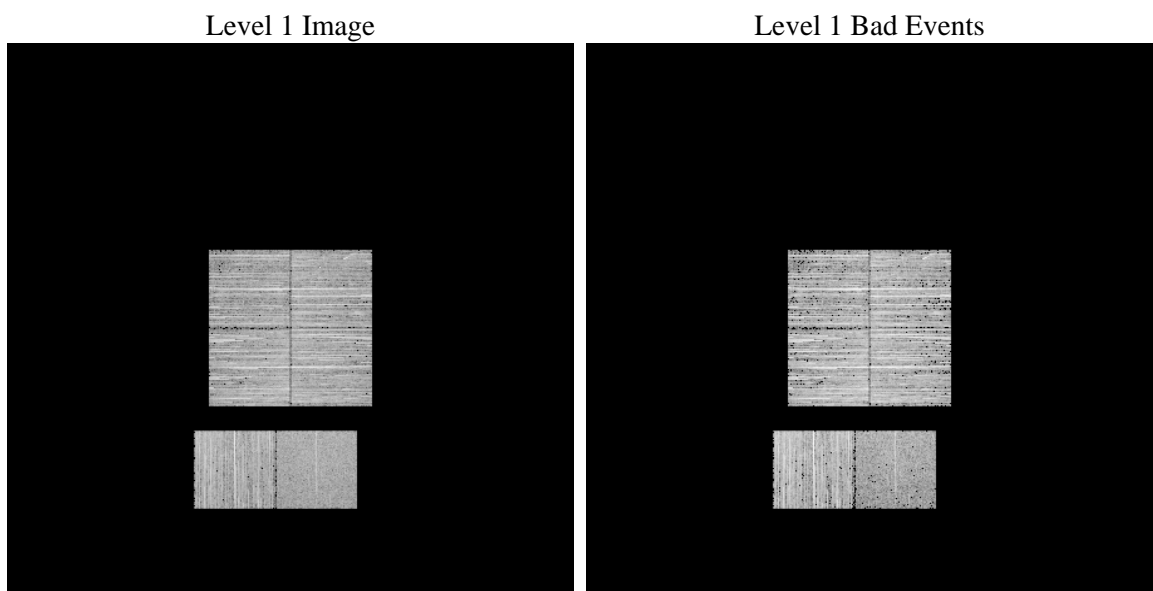
1 Front

seq_num	 	Sequence number
obs_id	51556	Observation id
title	ACIS-012367 diagnostics	Proposal title
observer	CHANDRA engineering request/realtime commanding	Principal investig
object	 	Source name
dtycycle	0	
cycle	P	events from which exps? Prim/Second/Both
ra_targ	0.0	Observer's specified target RA [deg]
dec_targ	0.0	Observer's specified target Dec [deg]
ra_nom	1.9598434280027	Nominal RA [deg]
dec_nom	23.603043140256	Nominal Dec [deg]
roll_nom	239.02578812303	Nominal Roll [deg]
revision	1	Processing version of data
ontime	3248.000048399	Sum of GTIs [s]
livetime	3206.8719160753	Livetime [s]
ontime0	3248.000048399	Sum of GTIs [s]
ontime1	3244.7590581179	Sum of GTIs [s]
ontime2	3248.000048399	Sum of GTIs [s]
ontime3	3248.000048399	Sum of GTIs [s]
ontime6	3247.9755026102	Sum of GTIs [s]
ontime7	3248.000048399	Sum of GTIs [s]
l2events	62827	Number of level 2 events

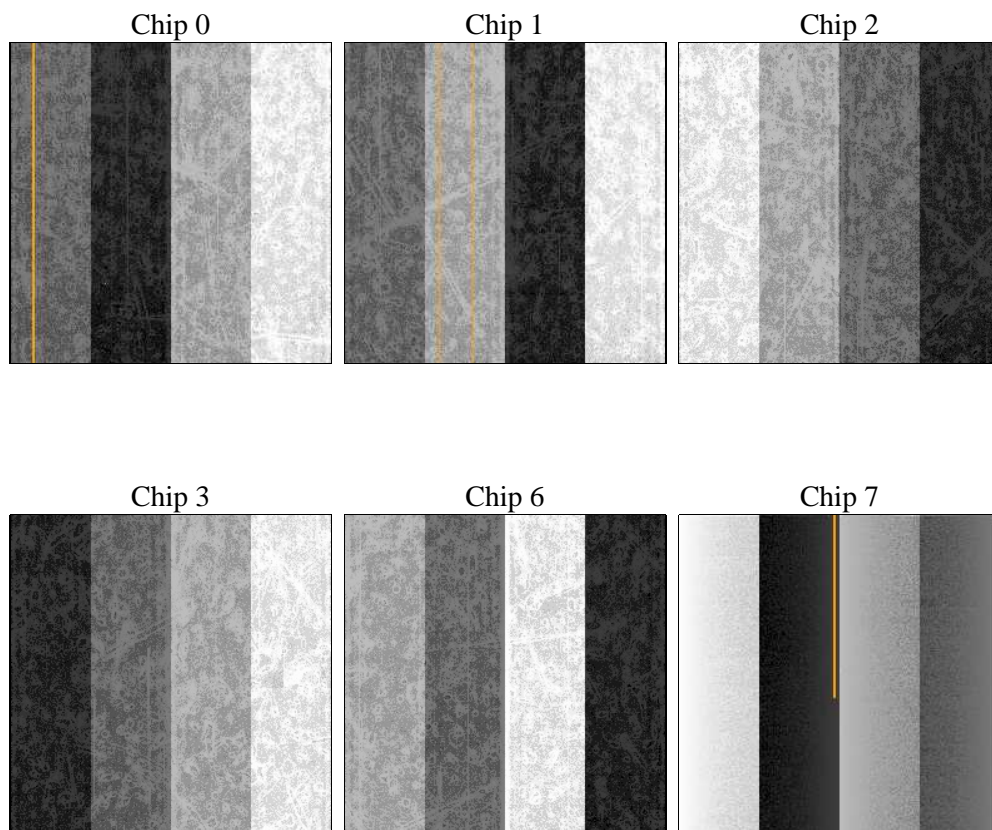
2 OBI

2.1 OBI

2.1.1 Images



2.1.2 Bias



2.1.3 Parameters

obi_num	0	Obi number	sched_exp_time	0.0	[s] Scheduled observation exposure time
ascdsver	10.4.2.1	Processing system revision	ontime	3248.000048399	Sum of GTIs [s]
caldbver	4.6.10a	 	ontime0	3248.000048399	Sum of GTIs [s]
date	2015-10-19T14:21:41	Date and time of file creation	ontime1	3244.7590581179	Sum of GTIs [s]
revision	1	Processing version of data	ontime2	3248.000048399	Sum of GTIs [s]
			ontime3	3248.000048399	Sum of GTIs [s]
			ontime6	3247.9755026102	Sum of GTIs [s]
			ontime7	3248.000048399	Sum of GTIs [s]
			l1events	364801	Number of level 1 events

2.1.4 Events

	ccd 0	ccd 1	ccd 2	ccd 3	ccd 6	ccd 7
level 1 events	55972	61220	68290	66928	63897	48494
rejected events	46776	51734	58978	57865	54113	28260
rejected %	83%	84%	86%	86%	84%	58%

	ccd 0	ccd 1	ccd 2	ccd 3	ccd 6	ccd 7
grade 0 events	4451	4444	4696	4532	4486	2500
	7%	7%	6%	6%	7%	5%
grade 1 events	39	29	27	26	11	36
	0%	0%	0%	0%	0%	0%
grade 2 events	1968	2142	1977	1778	2179	5085
	3%	3%	2%	2%	3%	10%
grade 3 events	657	624	633	653	698	1549
	1%	1%	0%	0%	1%	3%
grade 4 events	614	670	642	653	682	1592
	1%	1%	0%	0%	1%	3%
grade 5 events	1191	1207	1178	1305	1237	3114
	2%	1%	1%	1%	1%	6%
grade 6 events	1604	1746	1494	1601	1896	9750
	2%	2%	2%	2%	2%	20%
grade 7 events	45448	50358	57643	56380	52708	24868
	81%	82%	84%	84%	82%	51%

2.2 Compared Parameters

Parameter	Planned	Actual	Parameter	Planned	Actual
Instrument	ACIS	ACIS	Obspar format version number	7	7
Detector	ACIS-012367	ACIS-012367	Obspar file type	PREDICTED	ACTUAL
Grating	NONE	NONE	Obspar update status	NONE	UPDATED
Data mode	FAINT	FAINT	Number of optional ACIS chips dropped	0	0
Observation mode	SECONDARY	SECONDARY	On-chip summing requested	N	N
[deg] Pointing RA	0	1.959843428002671	Subarray requested	NONE	NONE
[deg] Pointing Dec	0	23.60304314025643	Alternating exposures requested	N	N
[deg] Pointing Roll	0.0	239.0257881230306	[s] Primary exposure time	3.2	3.2
[mm] SIM focus pos	-1.429586	-0.7809083437167272			
[mm] SIM defocus	0.1037507710433287	0.7524282956875696			
[mm] SIM translation stage pos	250.455976	250.466033080201			
[mm] SIM translation stage offset	0	-0.01005468664627074			
[s] Observation start time (MET)	561590412.3896331	561590411.36463			
Observation start date	2015-10-18T21:20:12	2015-10-18T21:20:11			
[s] Observation end time (MET)	561595268.839908	561595267.8149101			
Observation end date	2015-10-18T22:41:09	2015-10-18T22:41:07			
Read mode	TIMED	TIMED			

2.3 Star Slots

2.4 FID Slots

A Summary

A.1 Status

V&V Scientist	Jen Lauer
V&V Date (YYYY-MM-DD)	2015.10.19
V&V Edition	1
V&V Disposition and Status	OK
V&V Charge Time	3.248000048399

A.2 Comments