

V&V Reference Report

L2 ASCDS Version : 10.9.1

Observation 5316 - L2 Version 6
Chandra X-Ray Center

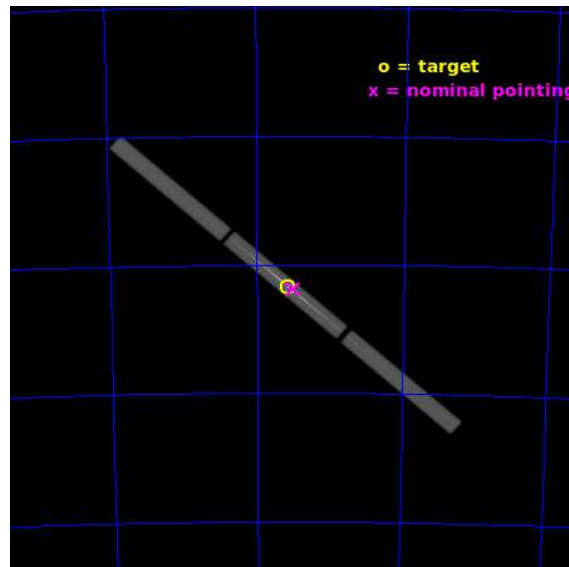
L2 Processing Date : Sep 25 2020

Contents

1	Front	2
2	OBI	3
2.1	OBI	3
2.1.1	Images	3
2.1.2	Parameters	4
2.1.3	Events	4
2.2	Compared Parameters	5
2.3	Aspect	6
2.4	Star Slots	9
2.4.1	Slot 3	9
2.4.2	Slot 4	10
2.4.3	Slot 5	11
2.4.4	Slot 6	12
2.4.5	Slot 7	13
2.5	FID Slots	14
2.5.1	Slot 0	14
2.5.2	Slot 1	15
2.5.3	Slot 2	16
3	Gratings	17
3.1	LETG Arm	17
A	Summary	19
A.1	Status	19
A.2	Comments	19

1 Front

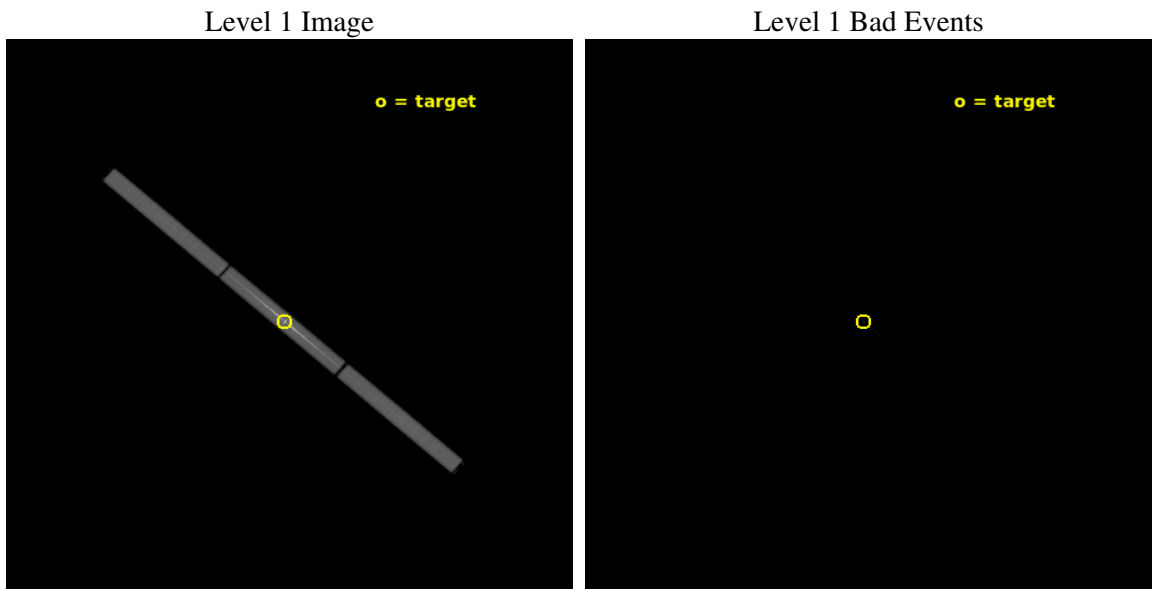
seq_num	400357	Sequence number
obs_id	5316	Observation id
title	High Resolution Spectroscopy of LMC X-3: Probing Local Hot X-ray Absorbing Gas	Proposal title
observer	Dr. Taotao Fang	Principal investigator
object	LMC X-3	Source name
ra_targ	84.734583	Observer's specified target RA [deg]
dec_targ	-64.084167	Observer's specified target Dec [deg]
ra_nom	84.699921473038	Nominal RA [deg]
dec_nom	-64.093414686502	Nominal Dec [deg]
roll_nom	221.05159733565	Nominal Roll [deg]
revision	6	Processing version of data
ontime	41714.683089375	[s]
livetime	41389.188470796	Overtime multiplied by DTCOR
l2events	2883848	Number of level 2 events



2 OBI

2.1 OBI

2.1.1 Images



2.1.2 Parameters

obi_num	0	Obi number	sched_exp_time	41860.000000	[s] Scheduled observation exposure time
ascdsver	10.9.1	Processing system revision	ontime	41714.683089375	[s]
caldbver	4.9.2	 	l1events	3746164	Number of level 1 events
date	2020-09-25T18:48:14	Date and time of file creation	tgmethod	TGDETECT	Method used to create src1a file
revision	6	Processing version of data	zo_pos	(32338.67, 33019.63)	src1a sky pixel position

2.1.3 Events

Level 1 Events

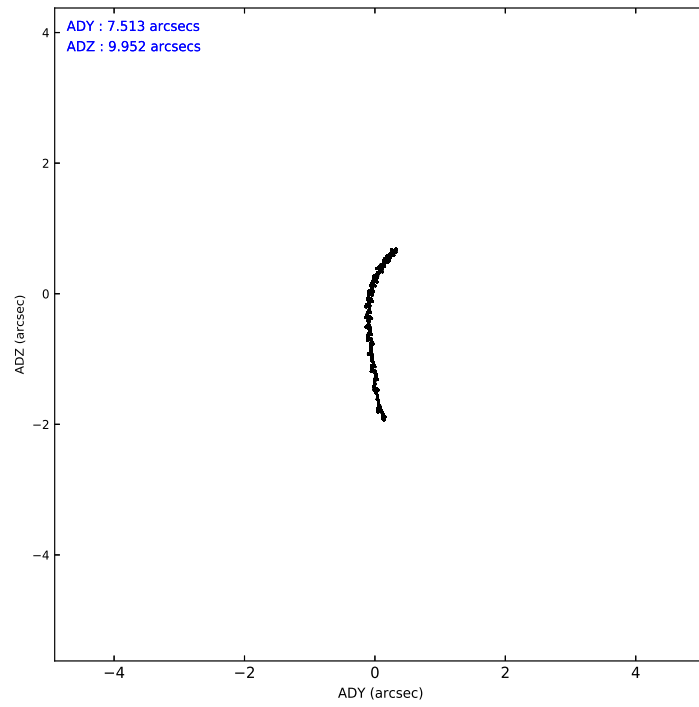
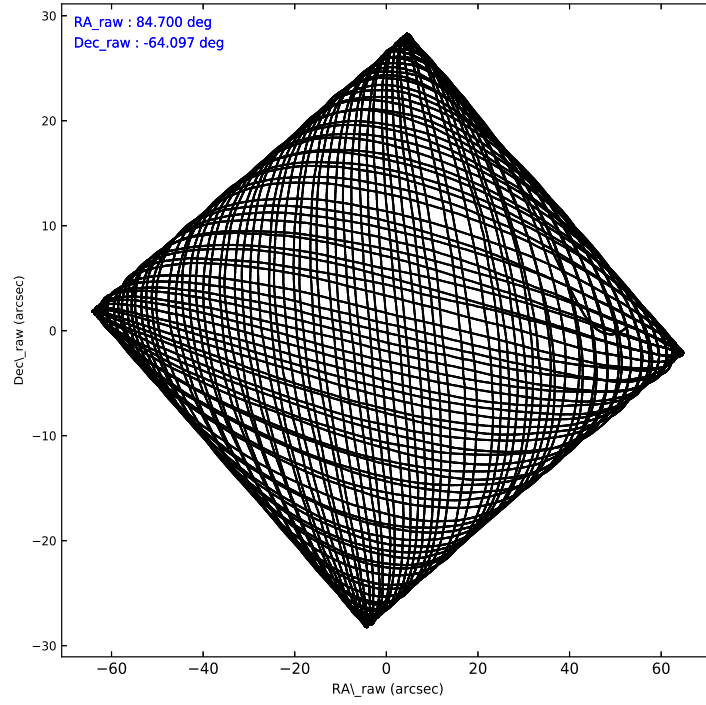
	segment 1	segment 2	segment 3
level 1 events	1033325	1679325	1033514
rejected events	2070	10650	2135
rejected %	0%	0%	0%

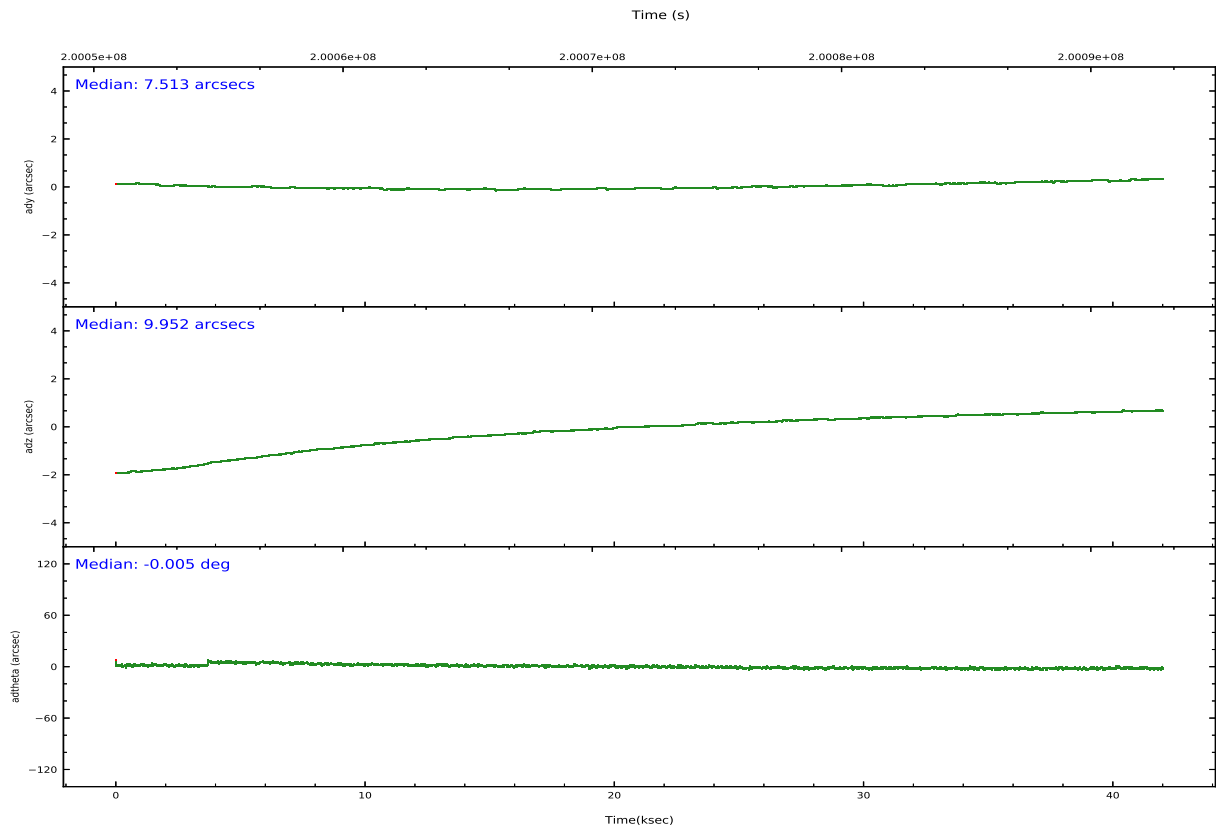
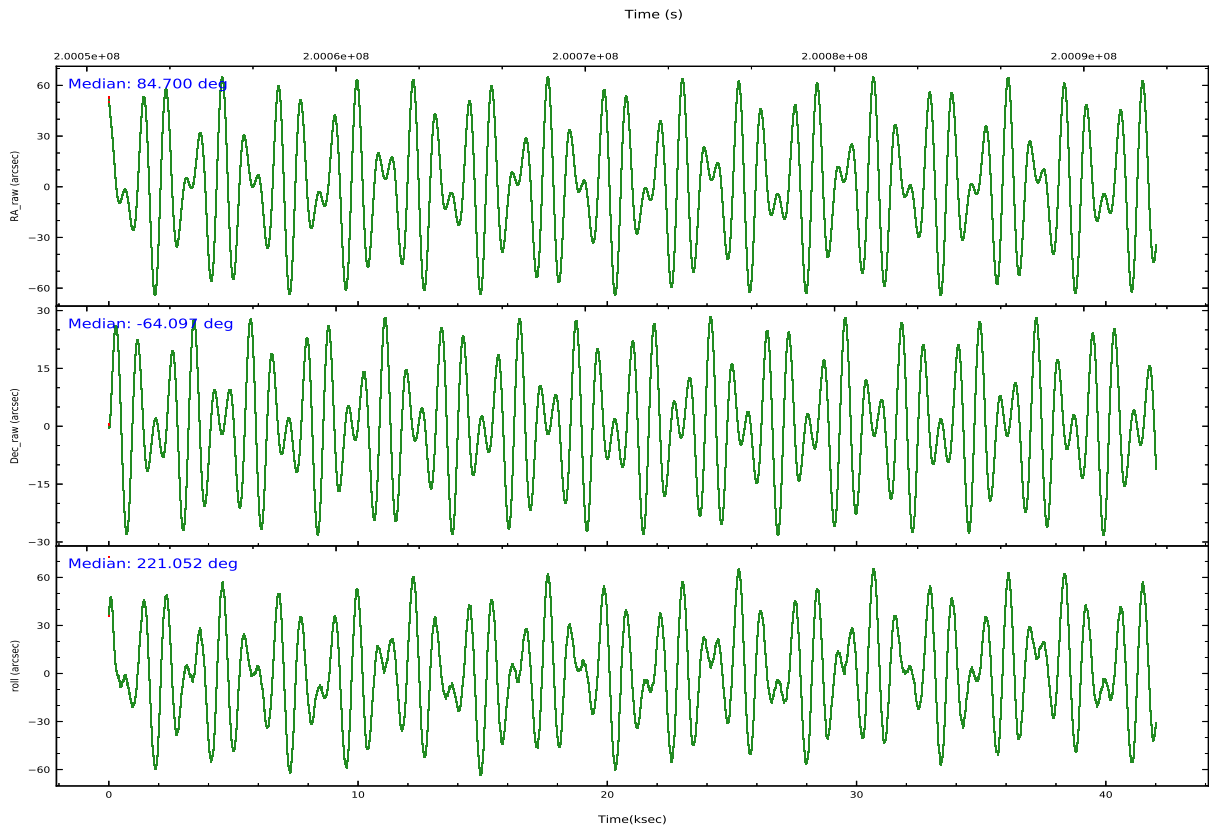
2.2 Compared Parameters

Parameter	Planned	Actual
Instrument	HRC	HRC
Detector	HRC-S	HRC-S
Grating	LETG	LETG
Data mode	OBSERVING	OBSERVING
Observation mode	POINTING	POINTING
[deg] Pointing RA	84.718546	84.699921473038
[deg] Pointing Dec	-64.069491	-64.093414686502
[deg] Pointing Roll	221.005544	221.05159733565
[mm] SIM focus pos	-1.429586	-1.428180813131781
[mm] SIM defocus	0.1037507710433287	0.1051558262725154
[mm] SIM translation stage pos	250.455976	250.466033080201
[mm] SIM translation stage offset	0	-0.01005468664627074
[s] Observation start time (MET)	200051042.184000	200049983.31893
Observation start date	2004-05-04T09:42:58	2004-05-04T09:26:23
[s] Observation end time (MET)	200092902.184000	200093771.83336
Observation end date	2004-05-04T21:20:38	2004-05-04T21:36:11

Parameter	Planned	Actual
Obspar version number	8	8
Obspar file type	PREDICTED	ACTUAL
Obspar update status	NONE	UPDATED

2.3 Aspect





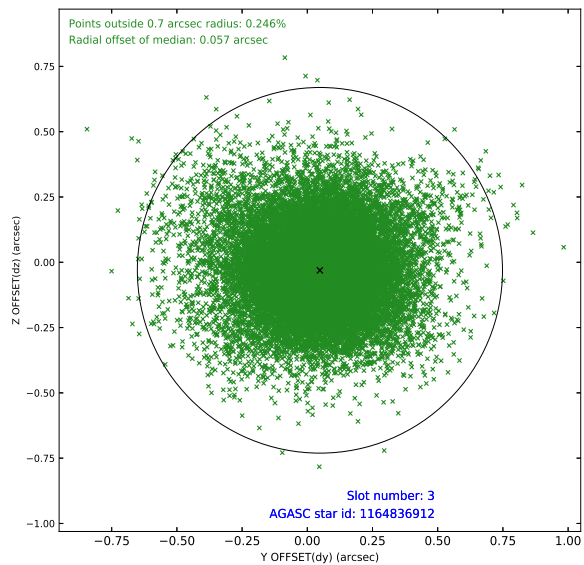
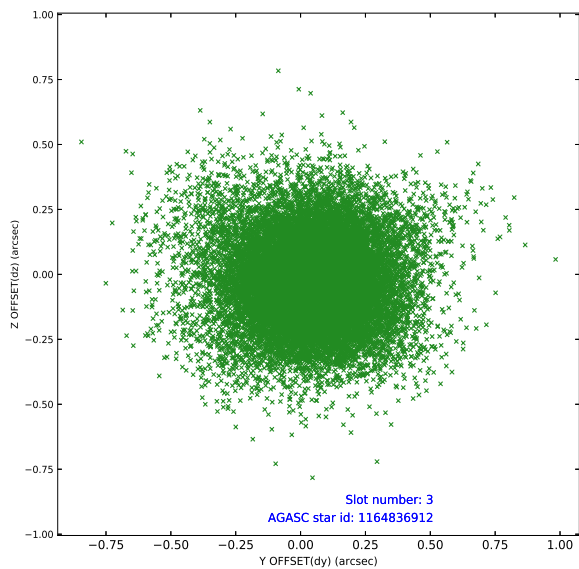
Slot Statistics

pt	status	used	id	mag	n_pts	frac_pts	med_dy	med_dz	dr1	dr2	ra	dec	mean_y	mea
0	FID		HRC-S-1	6.98	10249	1.000	0.054	-0.143	0.005	0.009	0.000000	0.000000	-1161.77	-458
1	FID		HRC-S-2	6.98	10249	1.000	0.120	-0.134	0.023	0.051	0.000000	0.000000	1237.86	-451
2	FID		HRC-S-4	6.95	10249	1.000	0.229	-0.028	0.024	0.048	0.000000	0.000000	1236.76	573
3	GUIDE	used	1164836912	10.64	20337	1.000	0.048	-0.031	0.249	0.448	84.021163	-64.549238	1951.47	600
4	GUIDE	used	1164838928	10.10	20477	1.000	0.070	-0.002	0.165	0.277	84.147245	-63.840751	147.25	-1213
5	GUIDE	used	1164841384	10.49	20458	1.000	-0.082	0.060	0.188	0.337	83.492551	-63.902402	1082.96	-1713
6	GUIDE	used	1166544016	9.68	20471	1.000	-0.016	-0.090	0.148	0.244	86.089673	-64.349585	-935.69	2180
7	GUIDE	used	1166548256	8.77	20491	1.000	-0.018	0.054	0.092	0.157	85.738698	-64.074093	-1192.28	1075

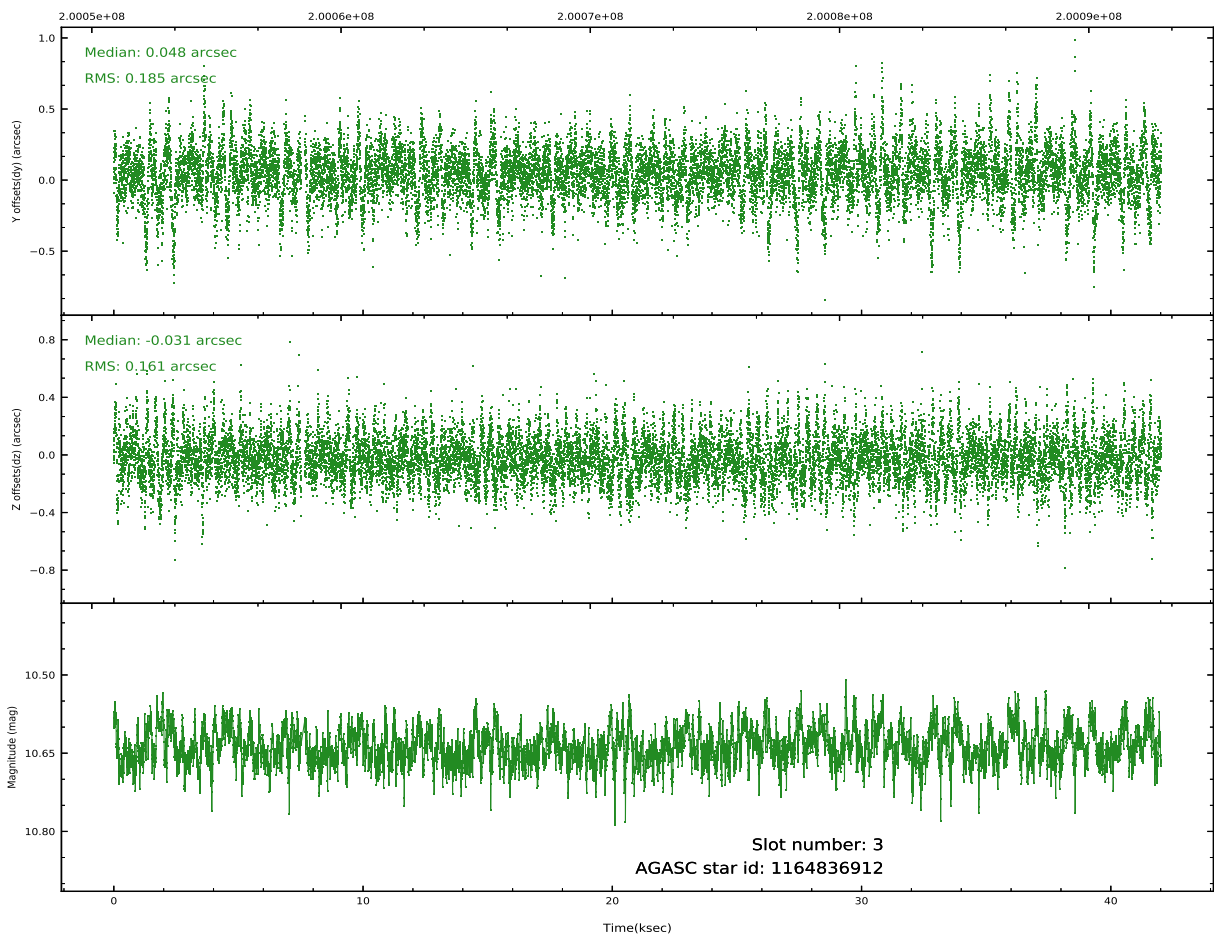
∞

2.4 Star Slots

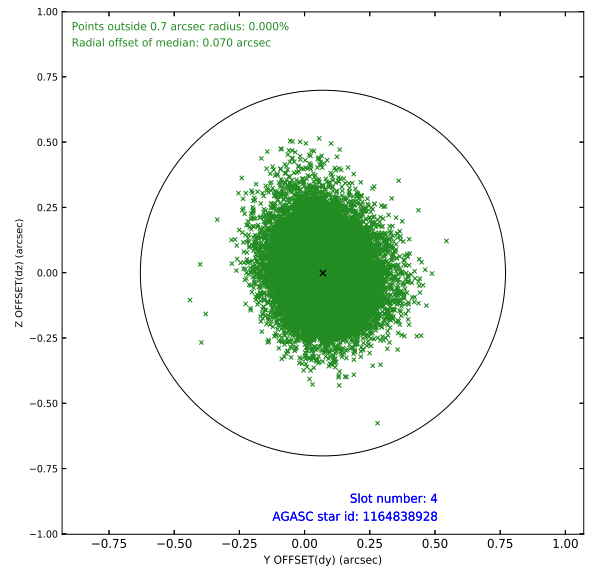
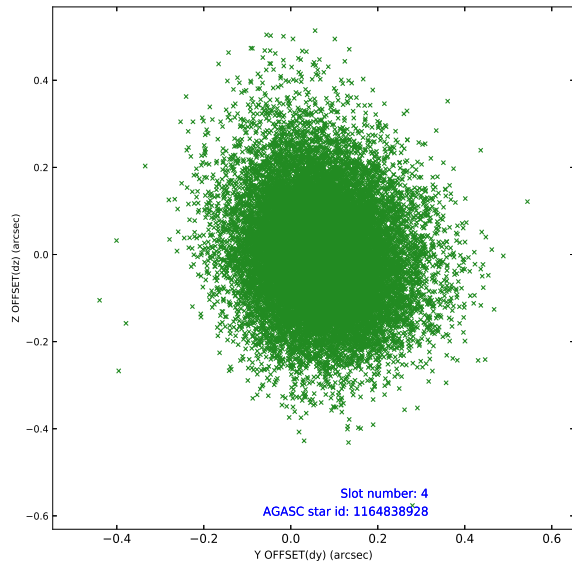
2.4.1 Slot 3



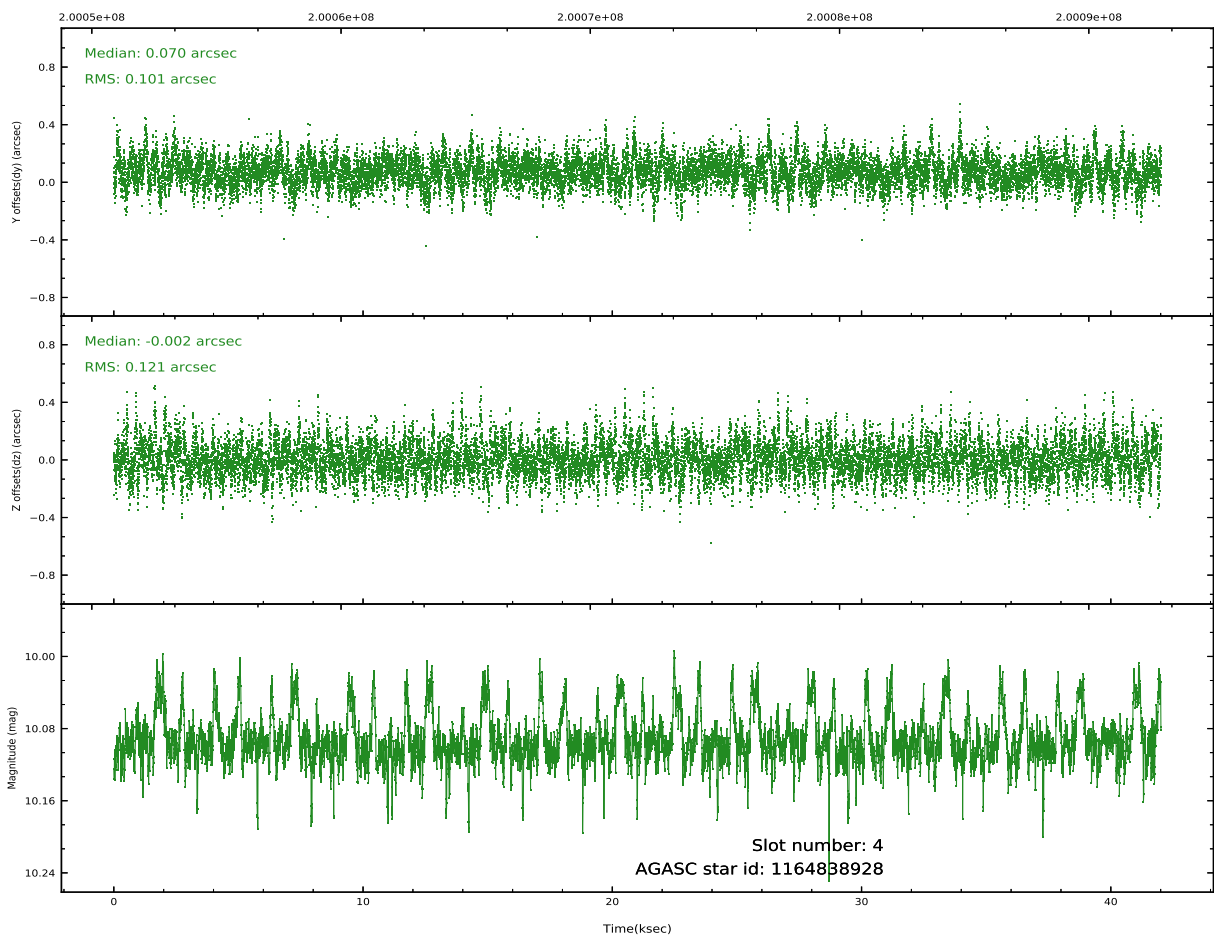
Time (s)



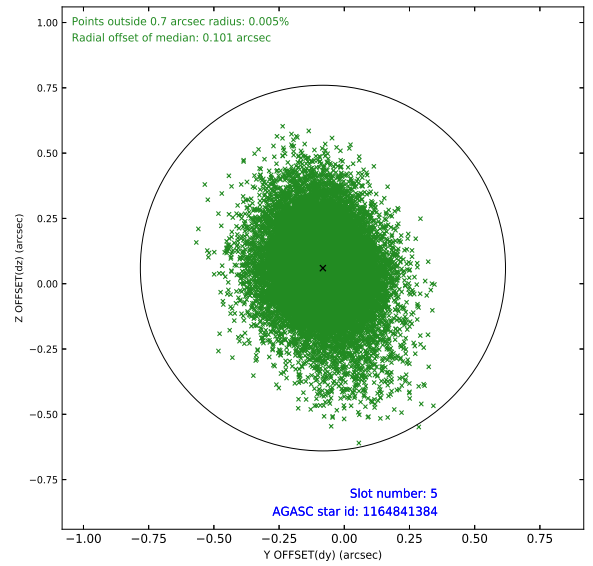
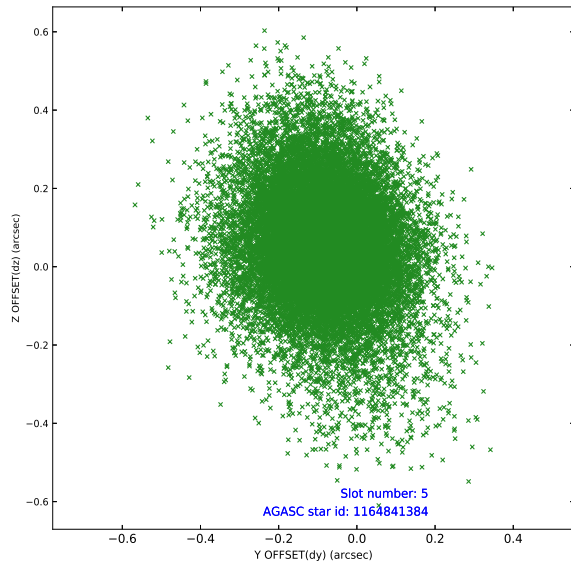
2.4.2 Slot 4



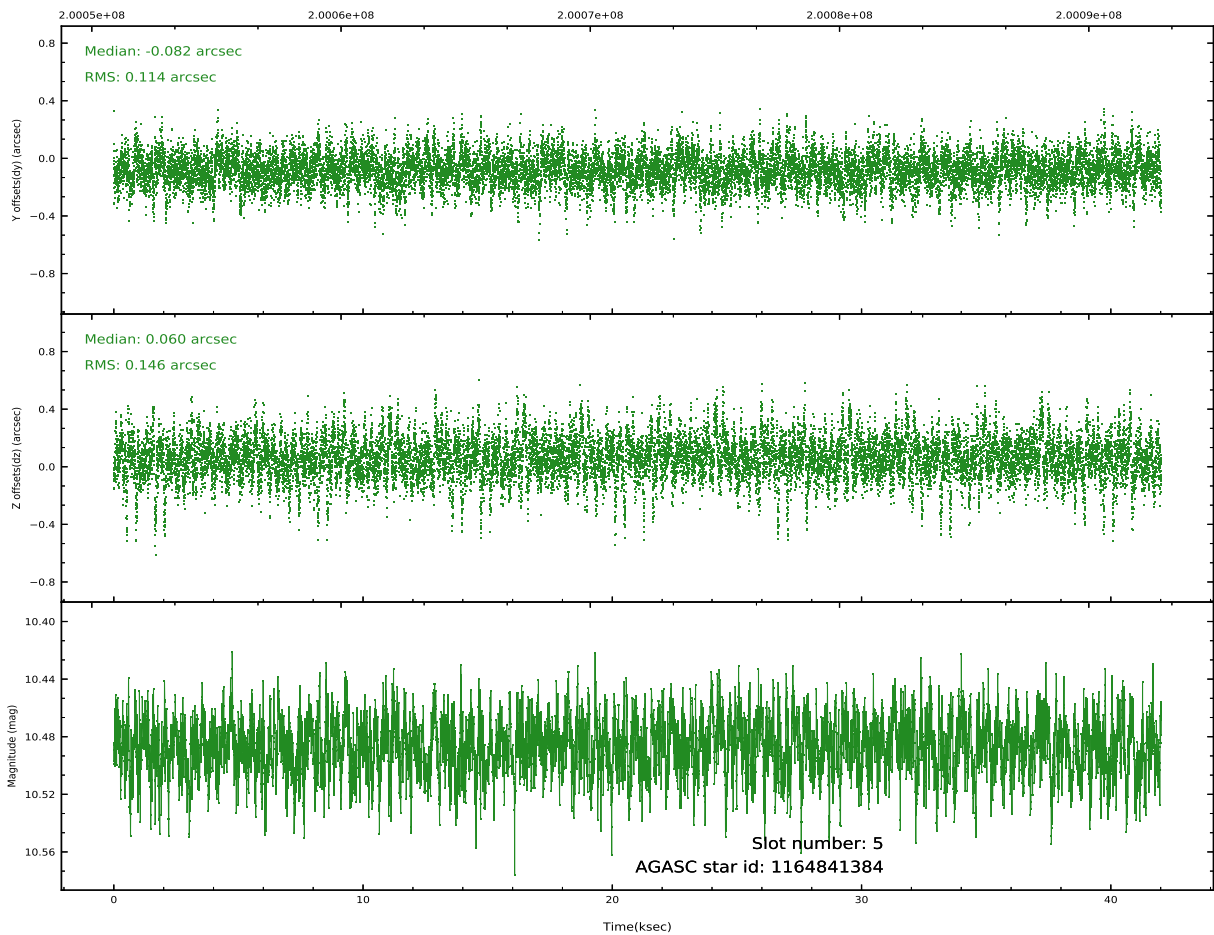
Time (s)



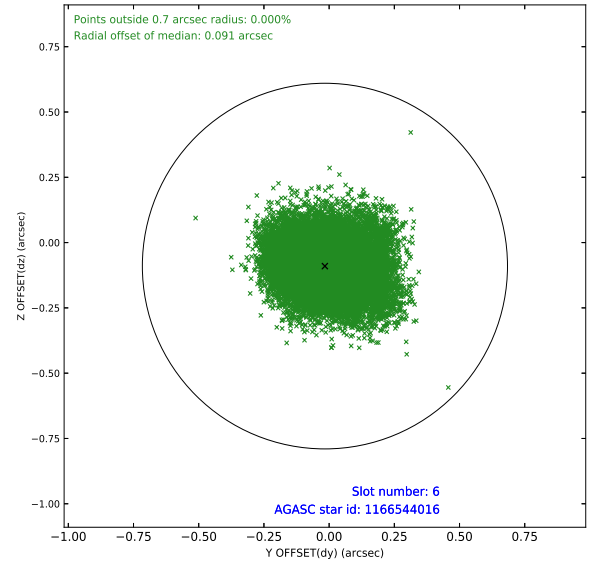
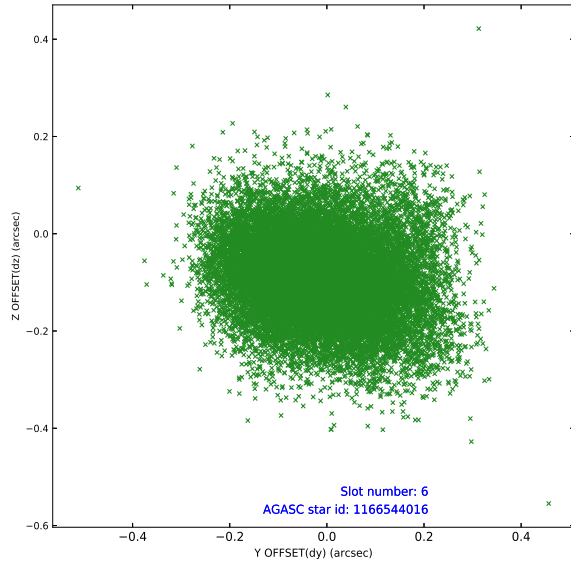
2.4.3 Slot 5



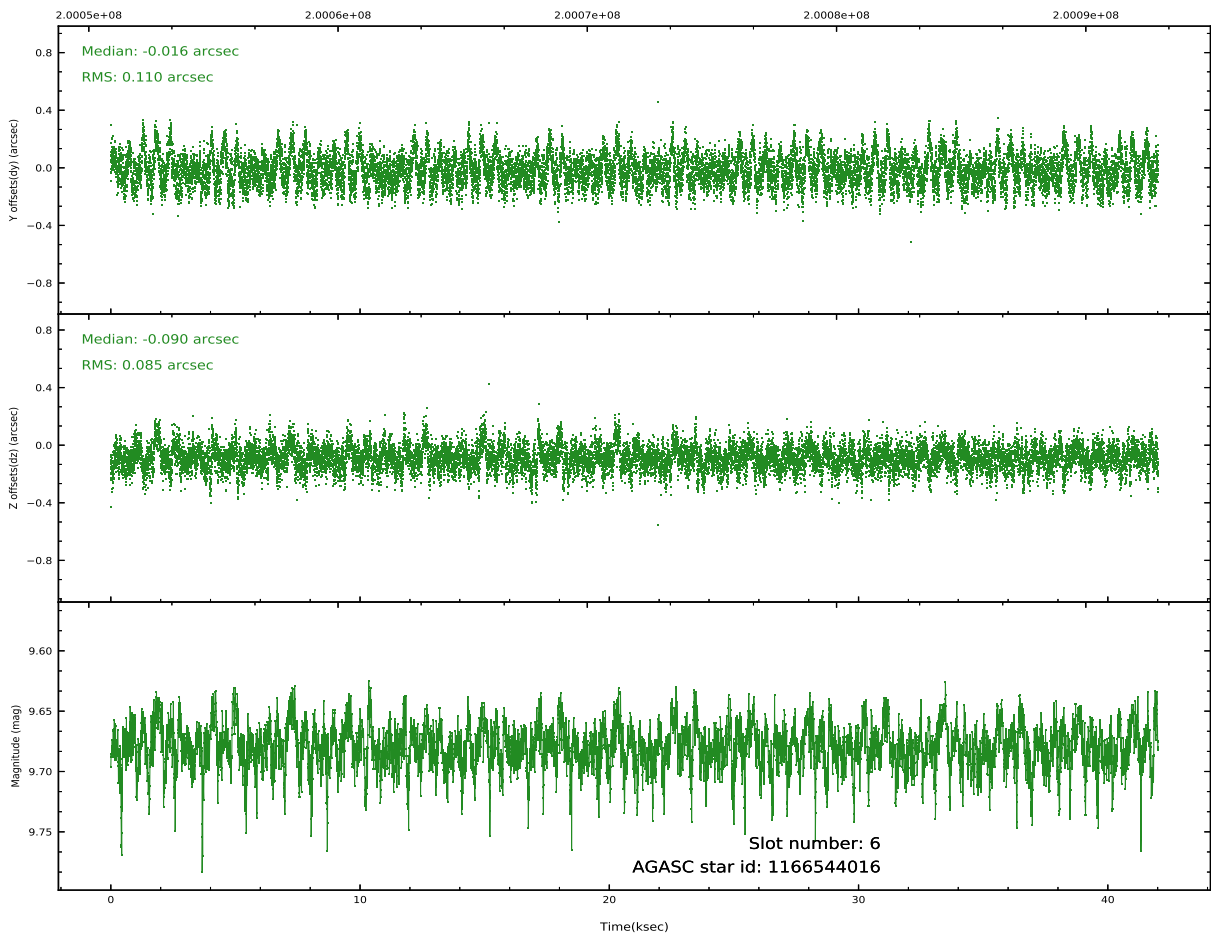
Time (s)



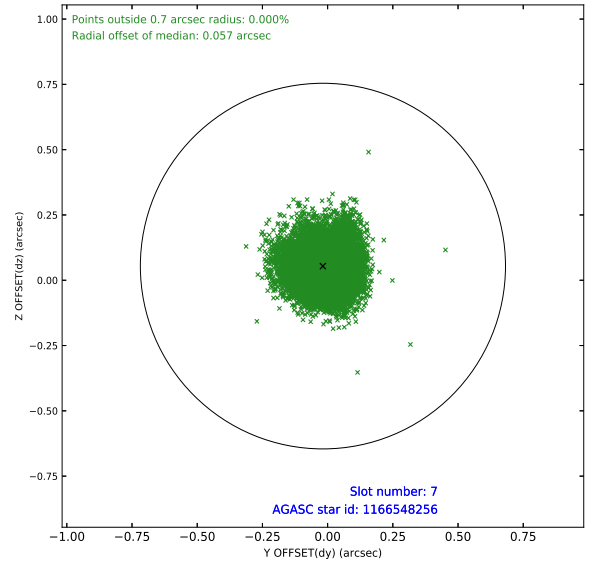
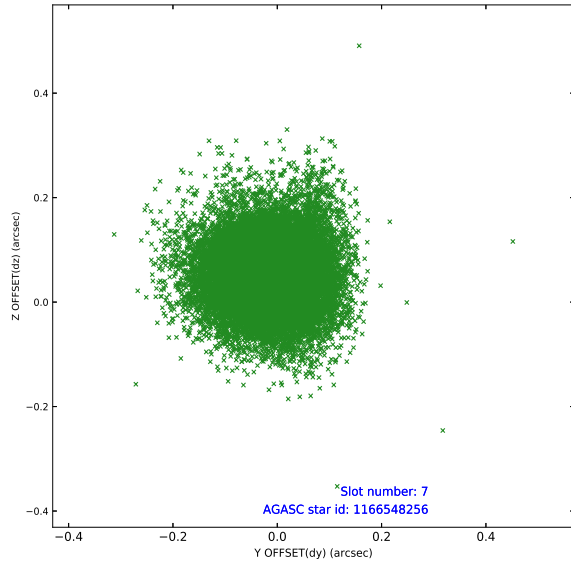
2.4.4 Slot 6



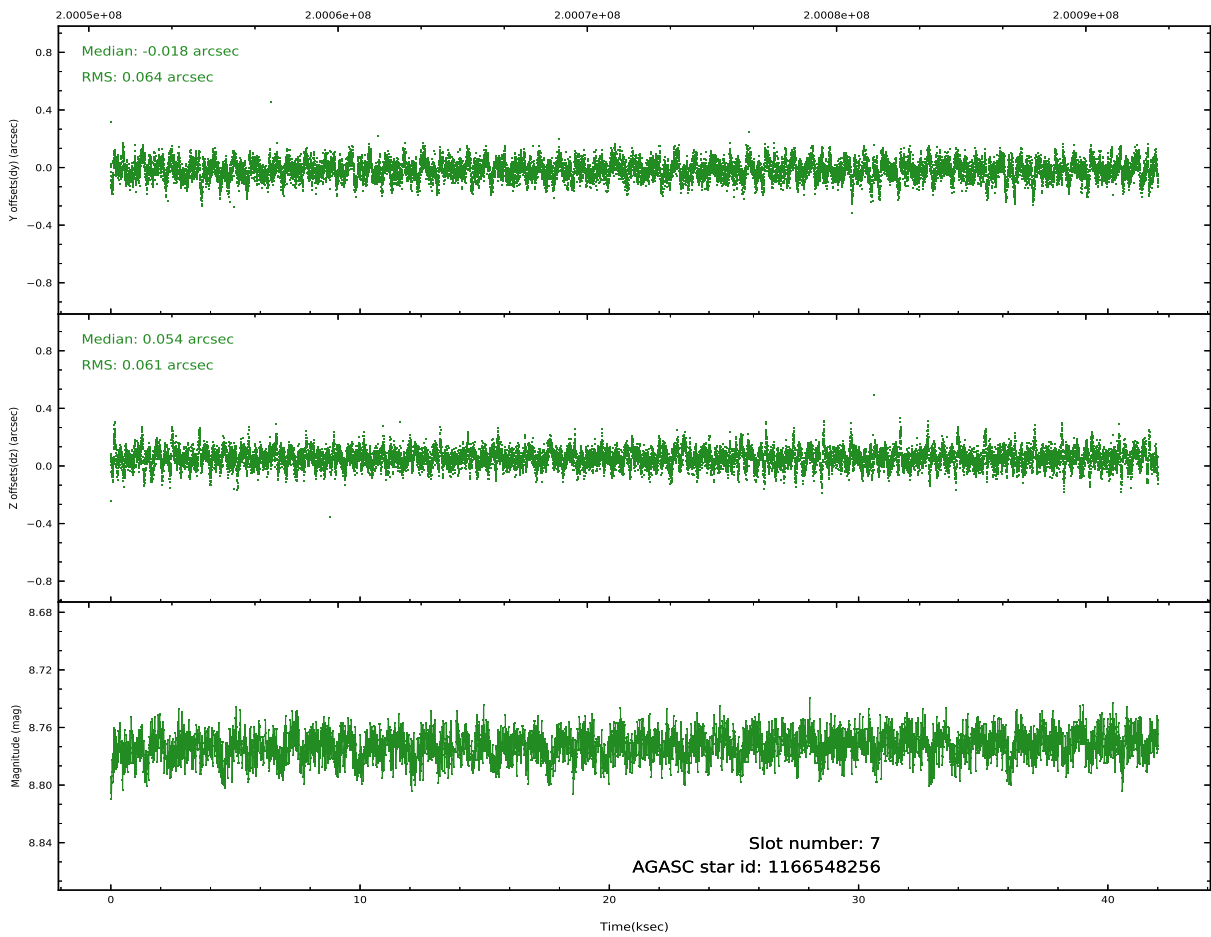
Time (s)



2.4.5 Slot 7

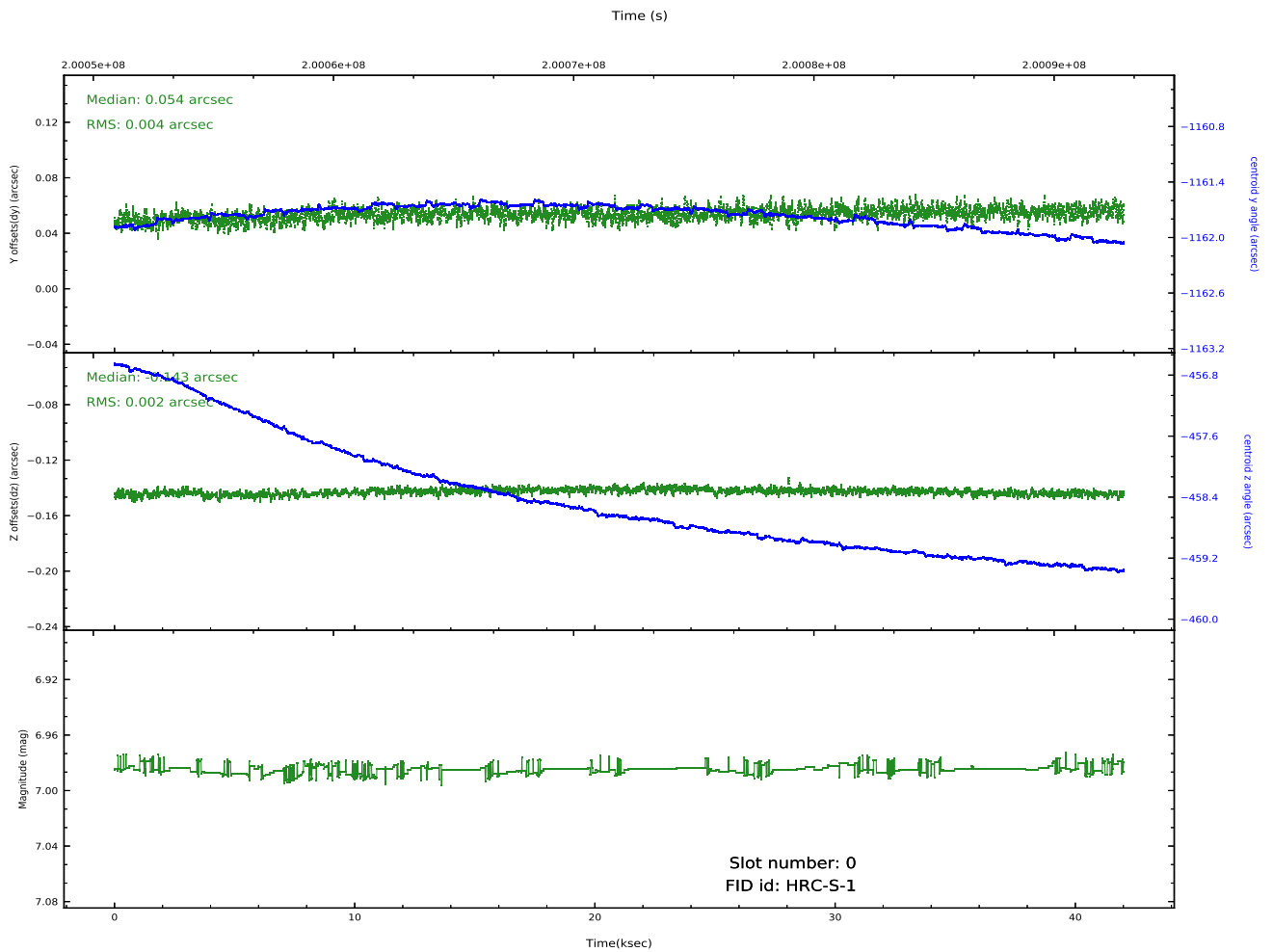
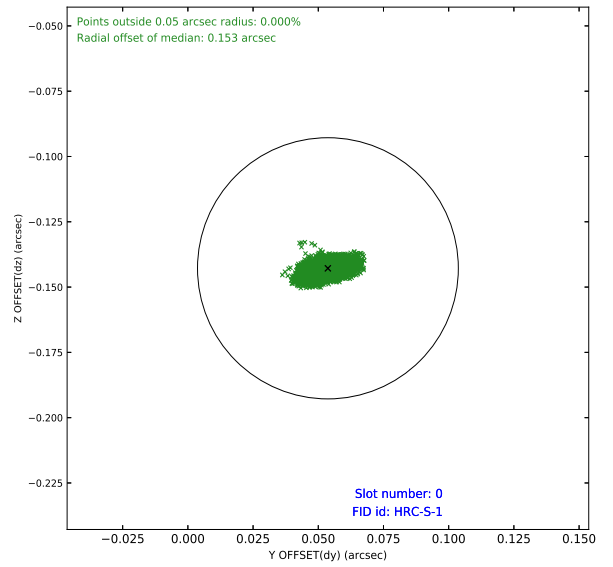
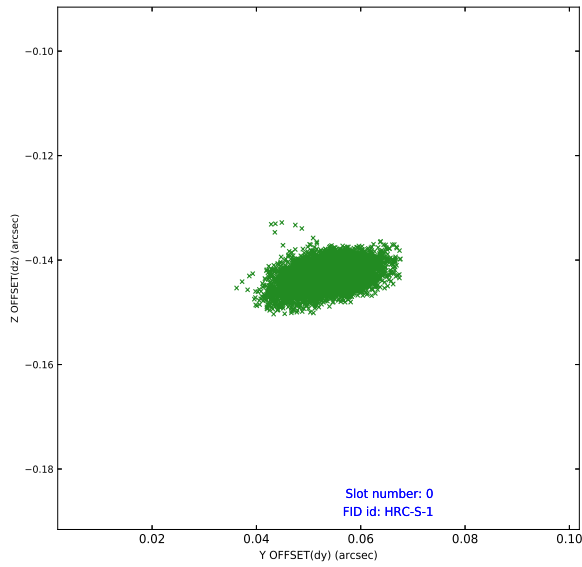


Time (s)

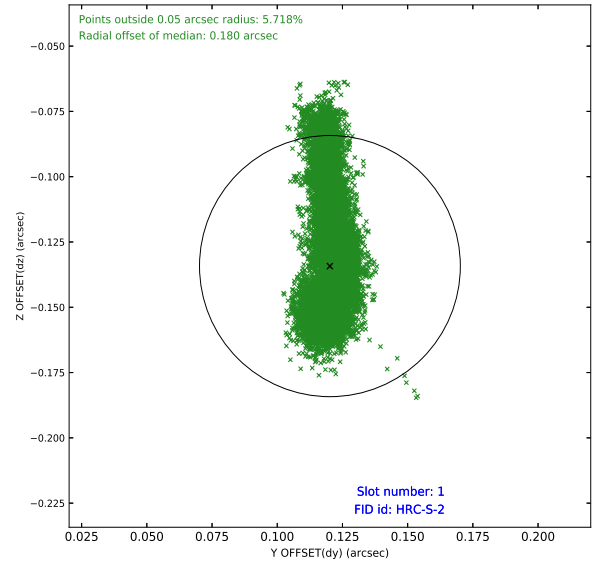
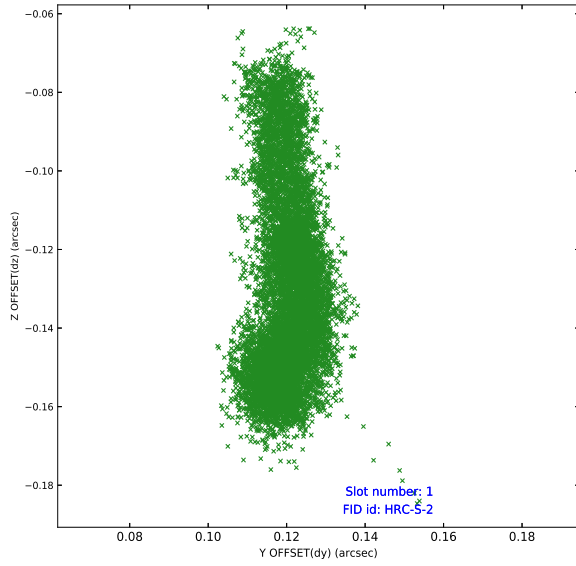


2.5 FID Slots

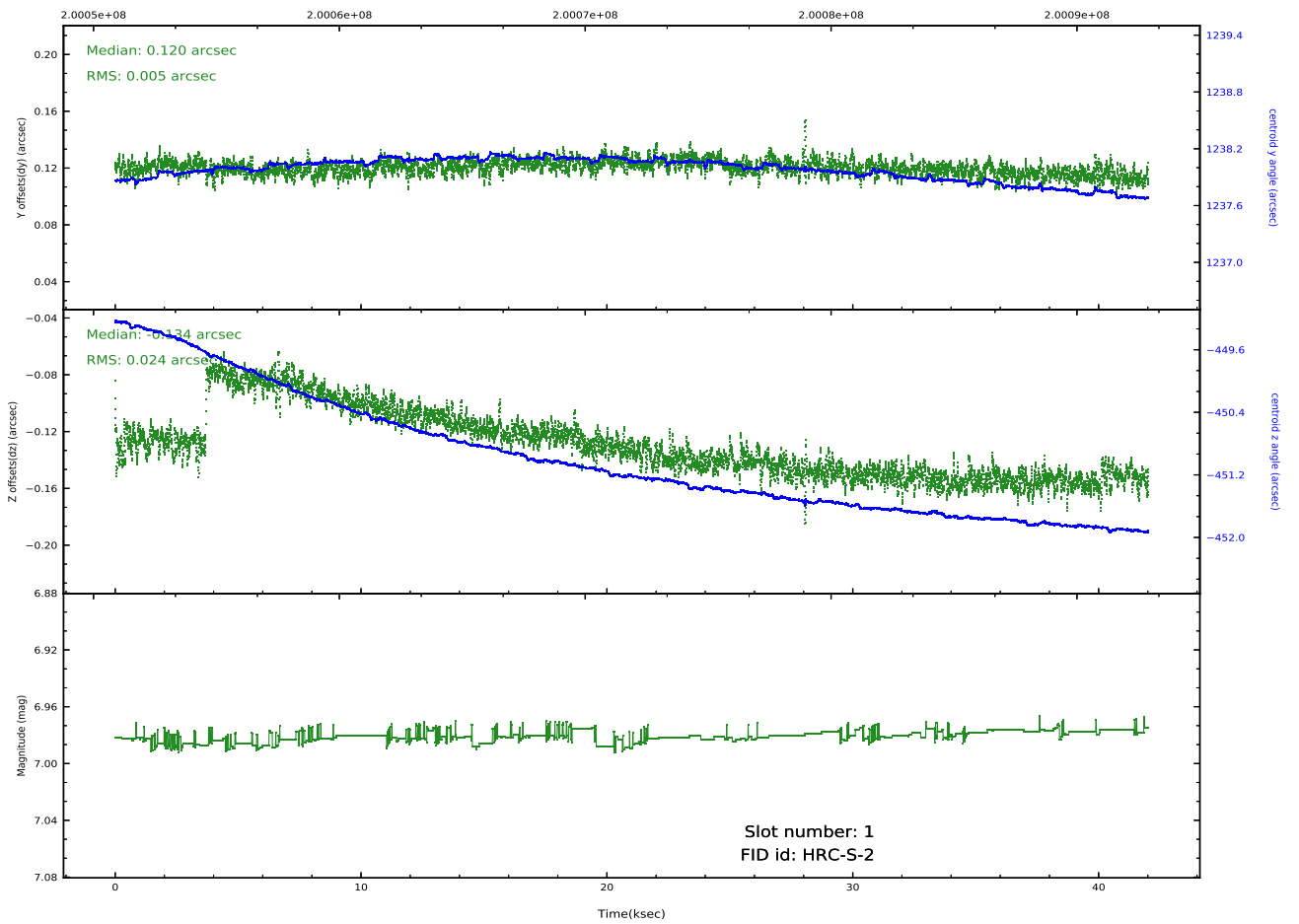
2.5.1 Slot 0



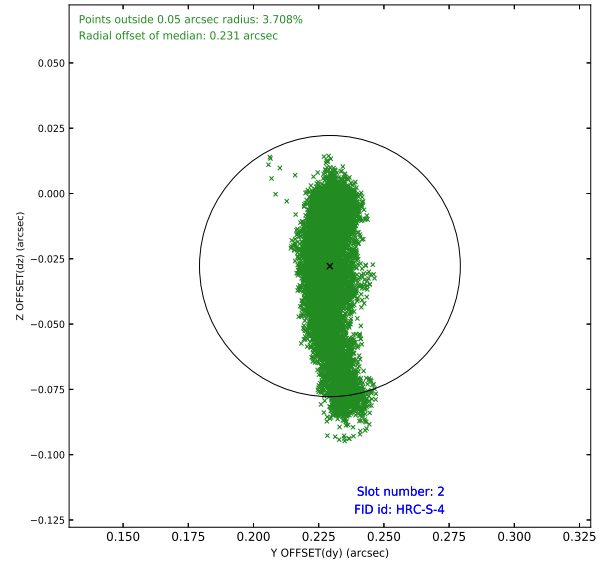
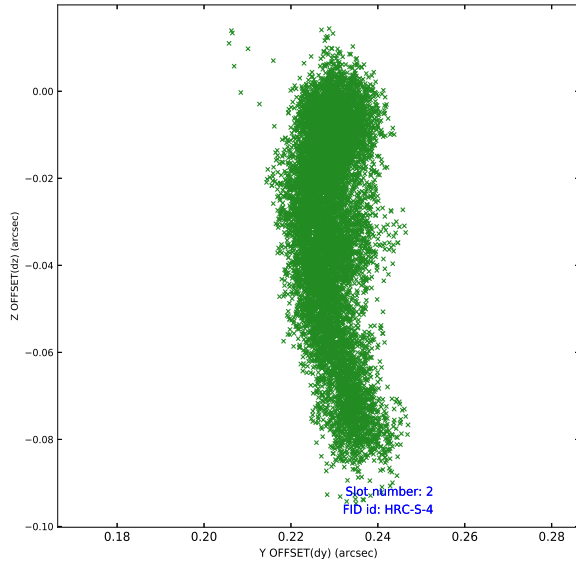
2.5.2 Slot 1



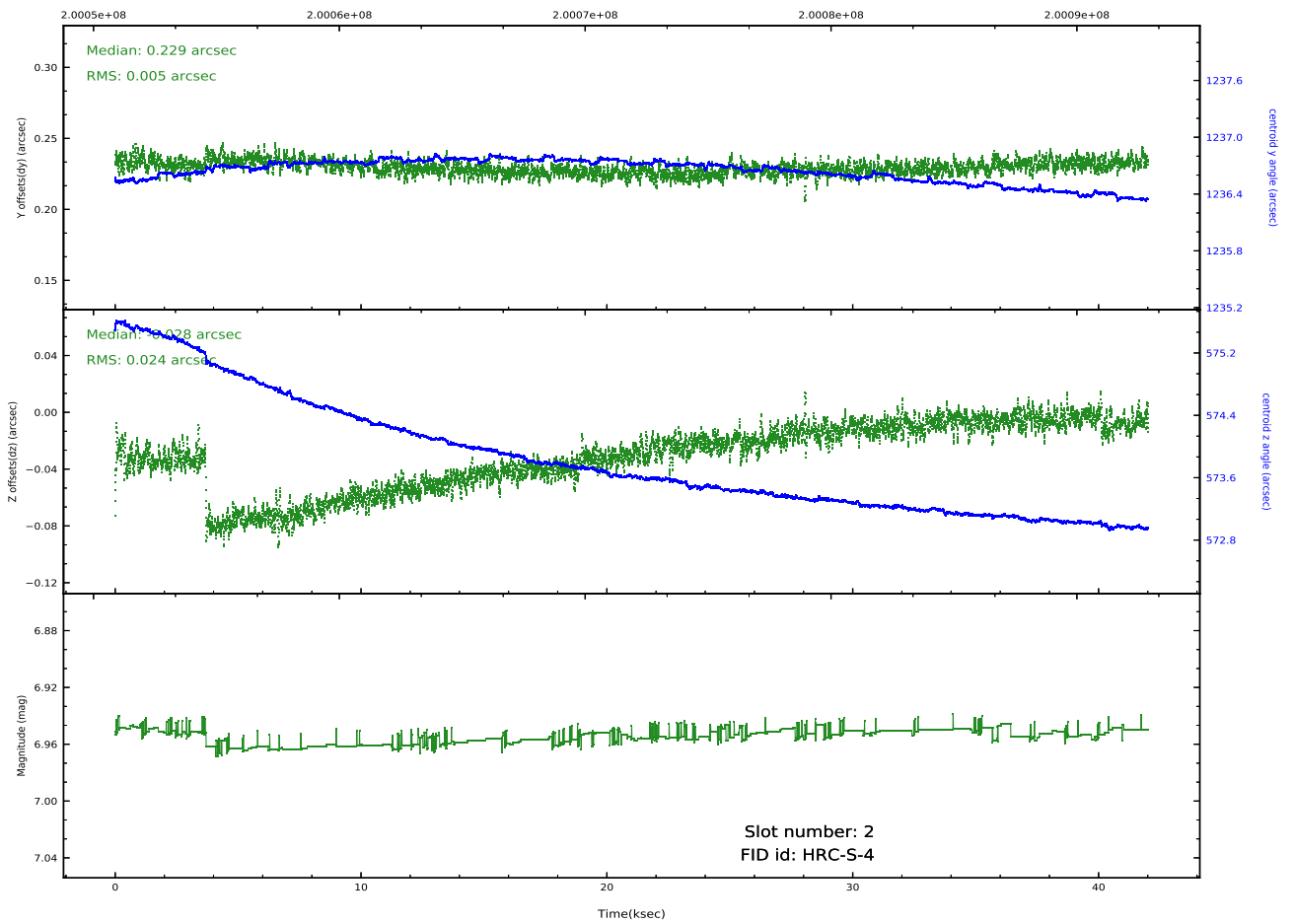
Time (s)



2.5.3 Slot 2

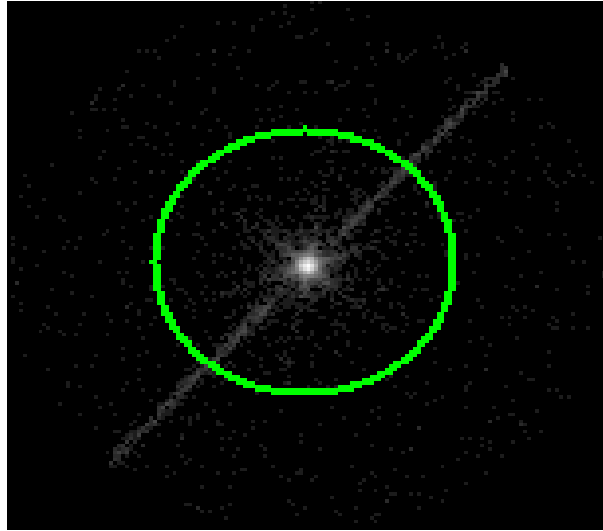


Time (s)

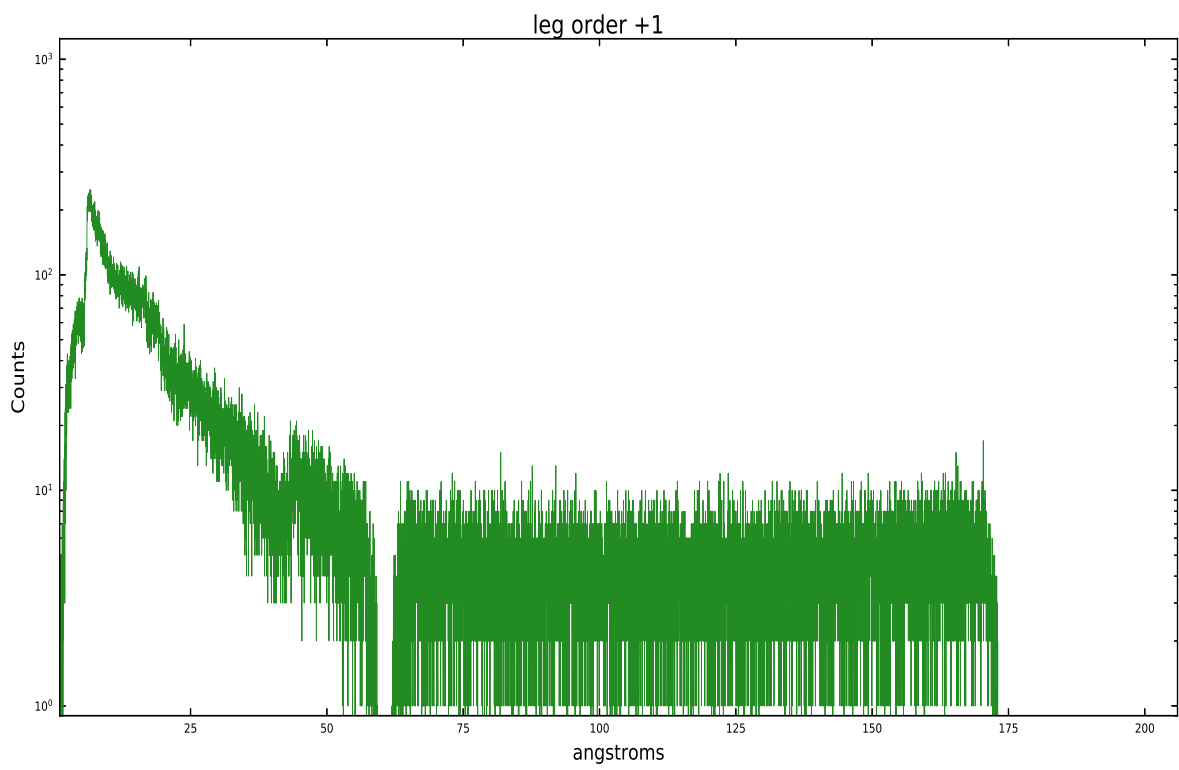
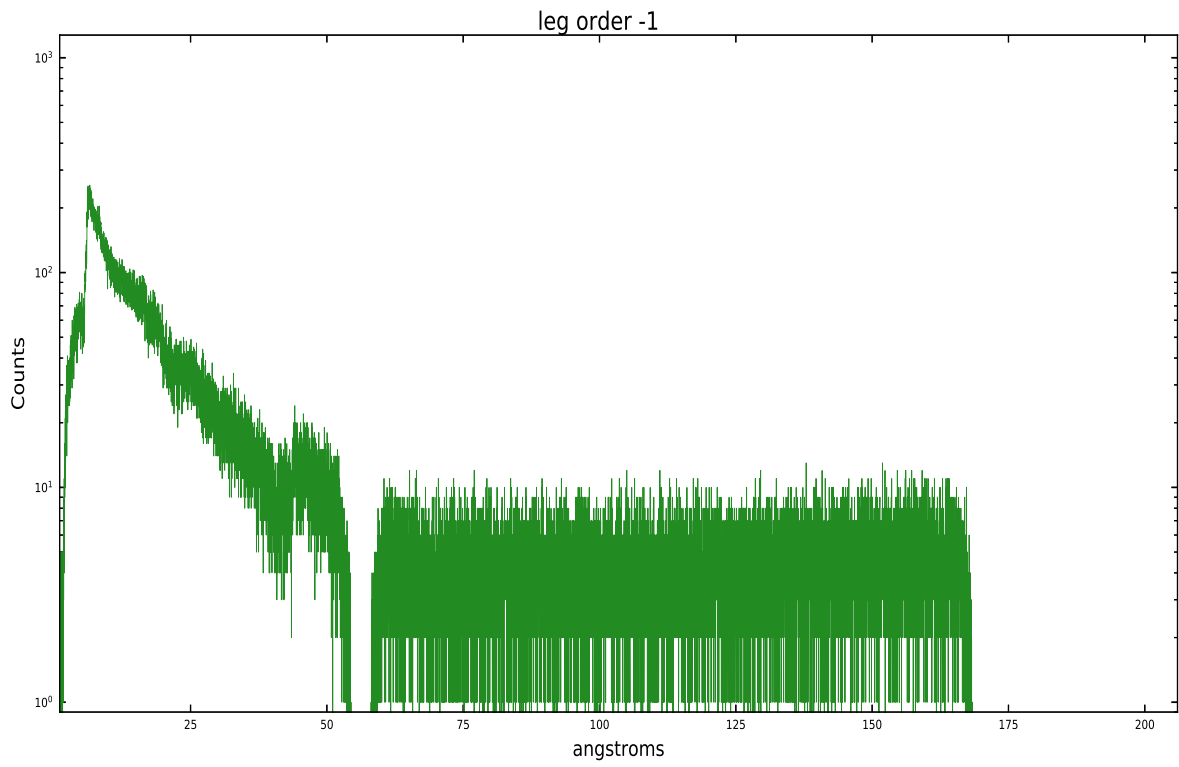


3 Gratings

3.1 LETG Arm



LETG Zero Order



A Summary

A.1 Status

V&V Scientist	Melania Nynka
V&V Date (YYYY-MM-DD)	2020.10.13
V&V Edition	1
V&V Disposition and Status	OK
V&V Charge Time	41.714

A.2 Comments