

V&V Reference Report

L2 ASCDS Version : 8.5

Observation 5356 - L2 Version 3
Chandra X-Ray Center

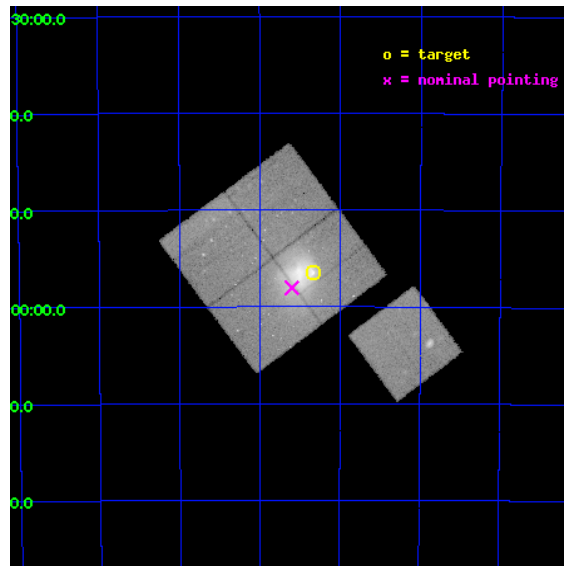
L2 Processing Date : Dec 7 2012

Contents

1	Front	2
2	OBI	3
2.1	OBI	3
2.1.1	Images	3
2.1.2	Bias	3
2.1.3	Parameters	4
2.1.4	Events	4
2.2	Compared Parameters	5
2.3	Aspect	6
2.4	Star Slots	9
2.4.1	Slot 3	9
2.4.2	Slot 4	10
2.4.3	Slot 5	11
2.4.4	Slot 6	12
2.4.5	Slot 7	13
2.5	FID Slots	14
2.5.1	Slot 0	14
2.5.2	Slot 1	15
2.5.3	Slot 2	16
A	Summary	17
A.1	Status	17
A.2	Comments	17

1 Front

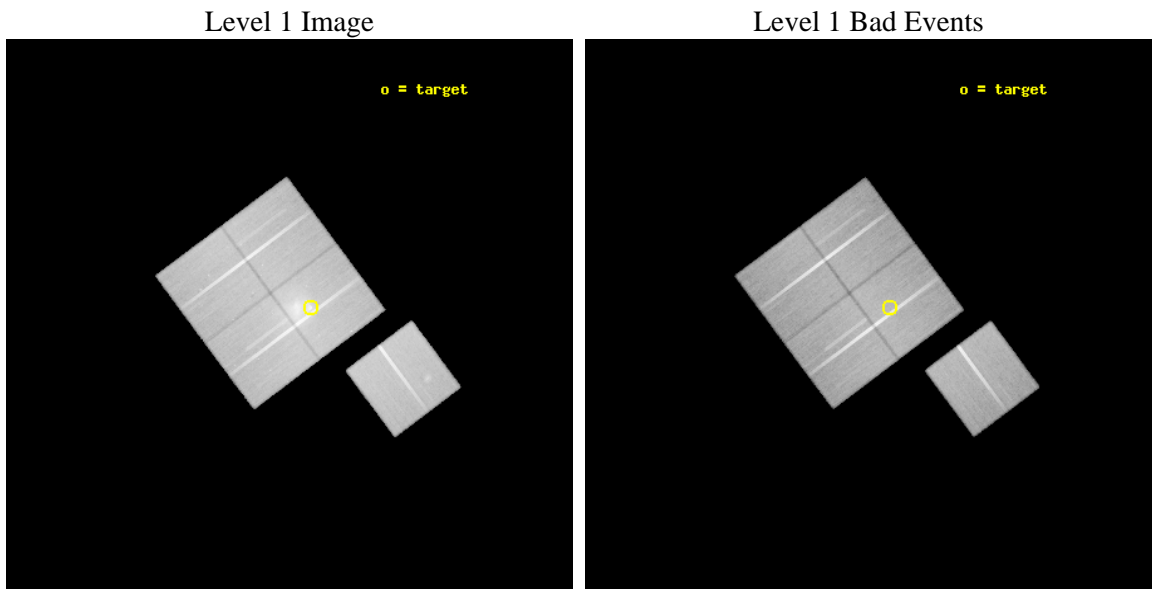
seq_num	800429	Sequence number
obs_id	5356	Observation id
title	THE MOST INTERESTING CLUSTER IN THE UNIVERSE	Proposal title
observer	Dr Maxim Markevitch	Principal investigator
object	1E0657-56	Source name
dtcycle	0	
cycle	P	events from which exps? Prim/Second/Both
ra_targ	104.5827	Observer's specified target RA [deg]
dec_targ	-55.9415	Observer's specified target Dec [deg]
ra_nom	104.64985333165	Nominal RA [deg]
dec_nom	-55.967552059525	Nominal Dec [deg]
roll_nom	143.26432717666	Nominal Roll [deg]
revision	3	Processing version of data
ontime	98483.572128356	Sum of GTIs [s]
liveltime	97196.811755948	Livetime [s]
ontime0	98489.853909492	Sum of GTIs [s]
ontime1	98496.135879755	Sum of GTIs [s]
ontime2	98483.572128356	Sum of GTIs [s]
ontime3	98492.994899601	Sum of GTIs [s]
ontime6	98499.276850015	Sum of GTIs [s]
l2events	393941	Number of level 2 events



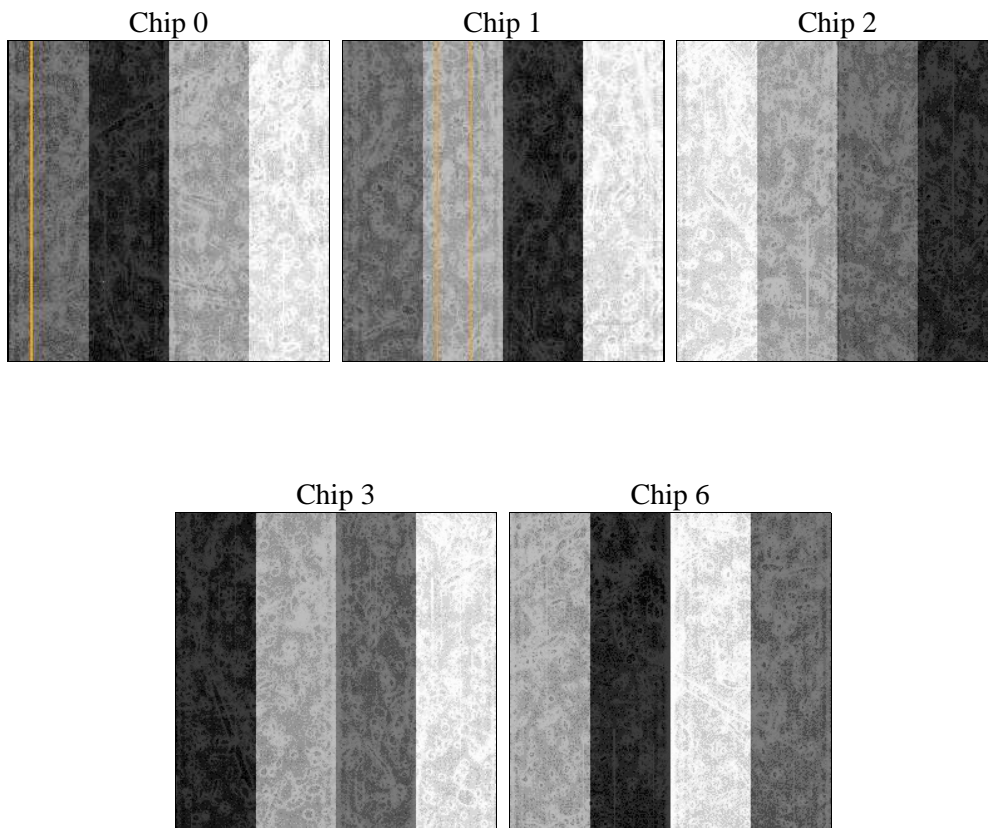
2 OBI

2.1 OBI

2.1.1 Images



2.1.2 Bias



2.1.3 Parameters

obi_num	0	Obi number	sched_exp_time	98370.000000	[s] Scheduled observation exposure time
ascdsver	8.5	Processing system revision	ontime	98483.572128356	Sum of GTIs [s]
caldbver	4.5.4	 	ontime0	98489.853909492	Sum of GTIs [s]
date	2012-12-07T19:44:58	Date and time of file creation	ontime1	98496.135879755	Sum of GTIs [s]
revision	3	Processing version of data	ontime2	98483.572128356	Sum of GTIs [s]
			ontime3	98492.994899601	Sum of GTIs [s]
			ontime6	98499.276850015	Sum of GTIs [s]
			l1events	3176457	Number of level 1 events

2.1.4 Events

	ccd 0	ccd 1	ccd 2	ccd 3	ccd 6
level 1 events	575328	577603	756770	641679	625077
rejected events	512247	507743	580732	561923	559756
rejected %	89%	87%	76%	87%	89%

	ccd 0	ccd 1	ccd 2	ccd 3	ccd 6
grade 0 events	23184	26653	116921	38773	24230
	4%	4%	15%	6%	3%
grade 1 events	292	293	993	403	290
	0%	0%	0%	0%	0%
grade 2 events	14531	14813	24970	14377	13521
	2%	2%	3%	2%	2%
grade 3 events	7137	7724	10274	7426	7286
	1%	1%	1%	1%	1%
grade 4 events	6586	7435	10207	7199	7169
	1%	1%	1%	1%	1%
grade 5 events	21315	22913	20800	23906	23949
	3%	3%	2%	3%	3%
grade 6 events	11923	13519	14132	12254	13385
	2%	2%	1%	1%	2%
grade 7 events	490360	484253	558473	537341	535247
	85%	83%	73%	83%	85%

2.2 Compared Parameters

Parameter	Planned	Actual	Parameter	Planned	Actual
Instrument	ACIS	ACIS	Obspar format version number	7	7
Detector	ACIS-01236	ACIS-01236	Obspar file type	PREDICTED	ACTUAL
Grating	NONE	NONE	Obspar update status	NONE	UPDATED
Data mode	VFAINT	VFAINT	Number of optional ACIS chips dropped	0	0
Observation mode	POINTING	POINTING	On-chip summing requested	N	N
[deg] Pointing RA	104.698490	104.649853331646	Subarray requested	NONE	NONE
[deg] Pointing Dec	-55.970654	-55.96755205952502	Alternating exposures requested	N	N
[deg] Pointing Roll	143.095949	143.2643271766576	[s] Primary exposure time	0.000000	3.1
[mm] SIM focus pos	-0.782348	-0.7809083437167272			
[mm] SIM defocus	0	0.001439871863259334			
[mm] SIM translation stage pos	-224.592463	-224.5962429424501			
[mm] SIM translation stage offset	-9	-8.996210060479569			
[s] Observation start time (MET)	208640238.184000	208639049.09937			
Observation start date	2004-08-11T19:36:14	2004-08-11T19:17:29			
[s] Observation end time (MET)	208738608.184000	208739625.17885			
Observation end date	2004-08-12T22:55:44	2004-08-12T23:13:45			
Read mode	TIMED	TIMED			

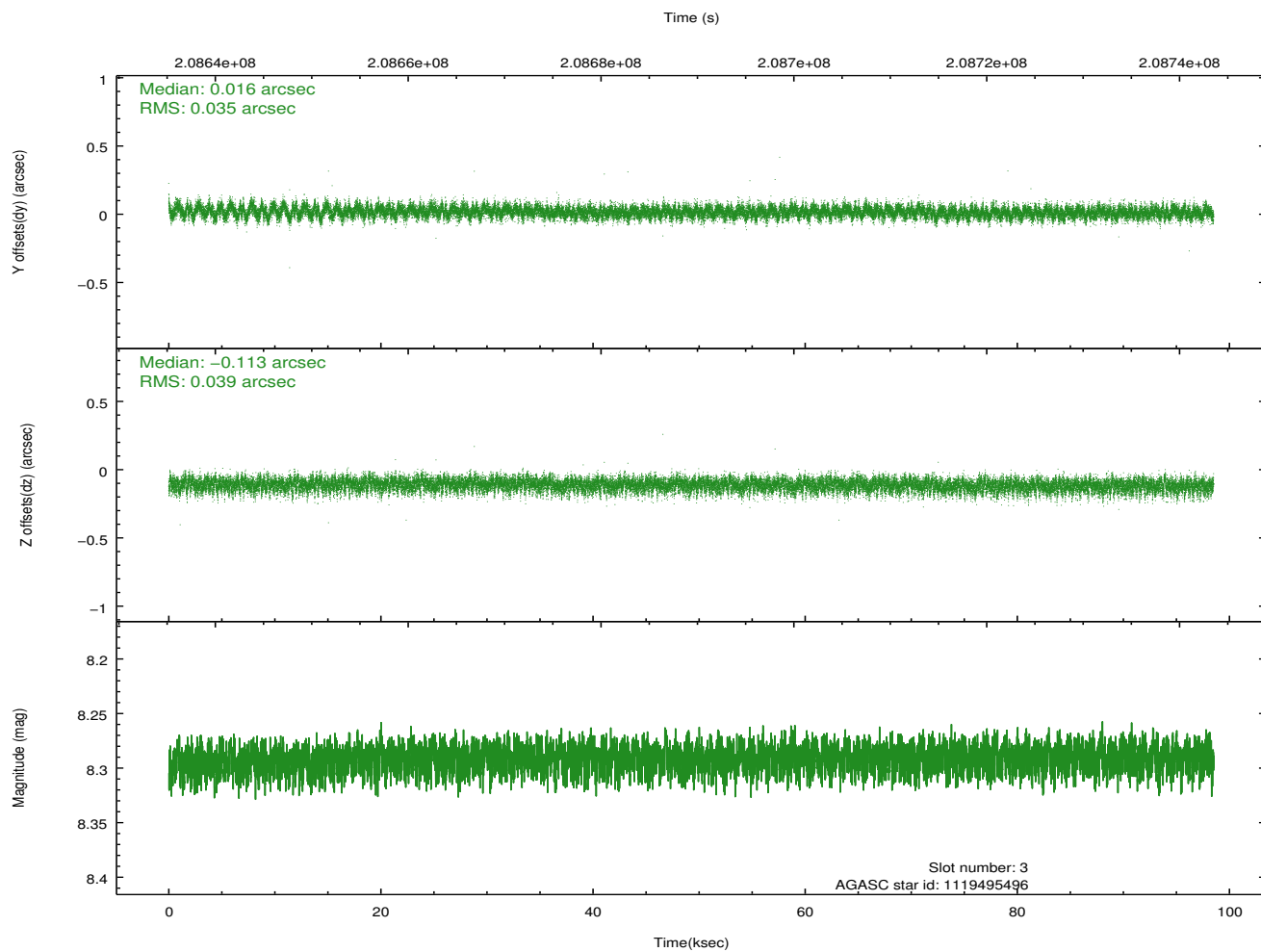
2.3 Aspect

Slot Statistics

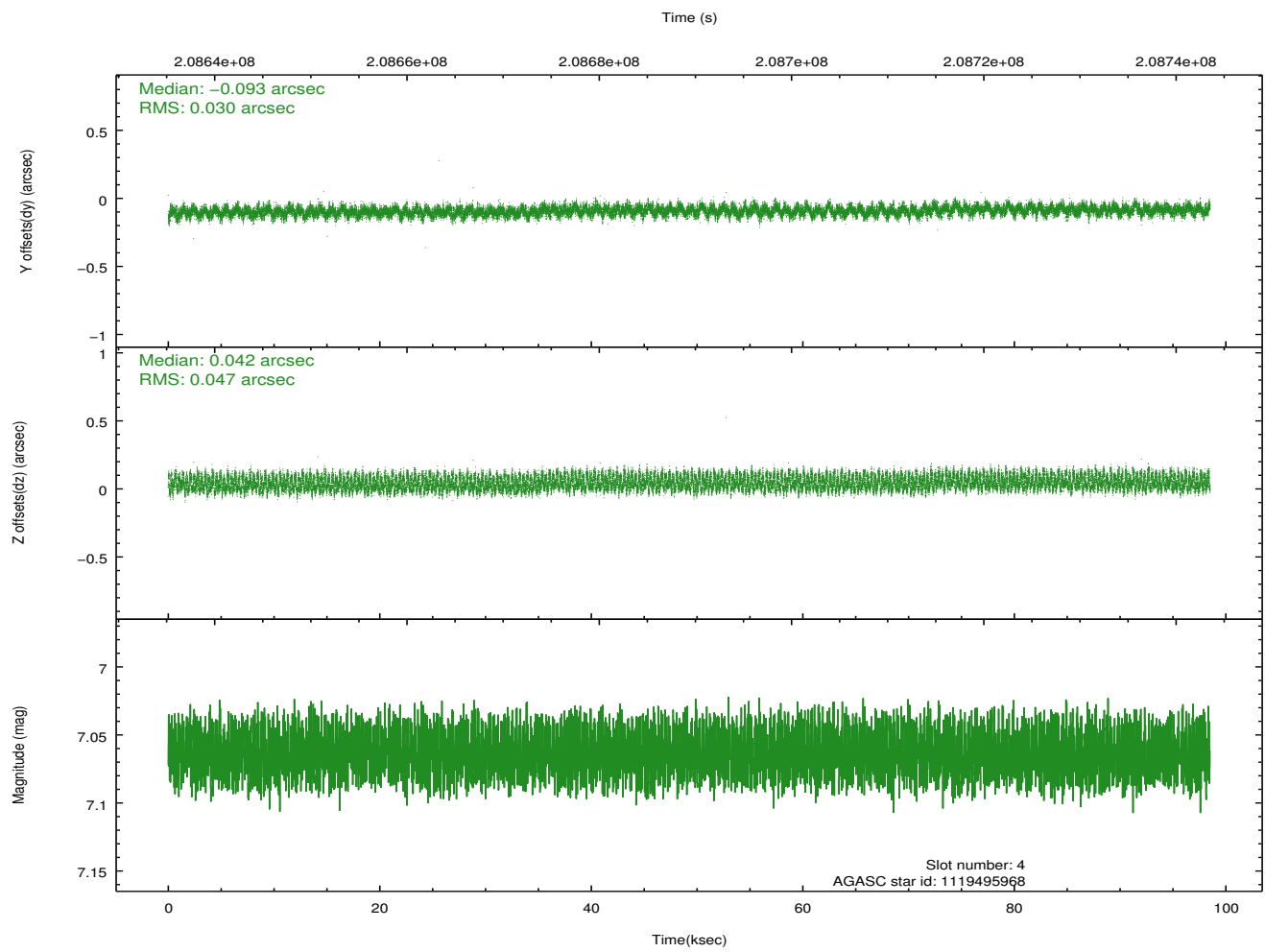
slot	status	id	mag	n_pts	med_dy	med_dz	dr1	dr2	ra	dec	mean_y	mean_z
0	FID	ACIS-I-1	7.22	24027	0.125	-0.221	0.029	0.090	0.000000	0.000000	934.93	-1018.74
1	FID	ACIS-I-4	7.14	24026	-0.004	0.116	0.029	0.059	0.000000	0.000000	2154.28	882.57
2	FID	ACIS-I-5	7.21	24028	-0.221	0.176	0.023	0.046	0.000000	0.000000	-1813.53	879.21
3	GUIDE	1119495496	8.29	48039	0.016	-0.113	0.055	0.090	104.298364	-55.915101	764.34	326.80
4	GUIDE	1119495968	7.06	48056	-0.093	0.042	0.061	0.093	105.873528	-55.948238	-1857.32	-1470.86
5	GUIDE	1119496704	7.85	48046	0.113	0.083	0.068	0.108	104.368364	-55.667750	1190.10	-467.89
6	GUIDE	1119500592	8.70	48034	0.035	0.068	0.085	0.143	105.814889	-55.642715	-1115.06	-2291.24
7	GUIDE	1120026344	6.71	48056	-0.074	-0.073	0.061	0.100	104.651539	-56.394853	-842.31	1277.48

2.4 Star Slots

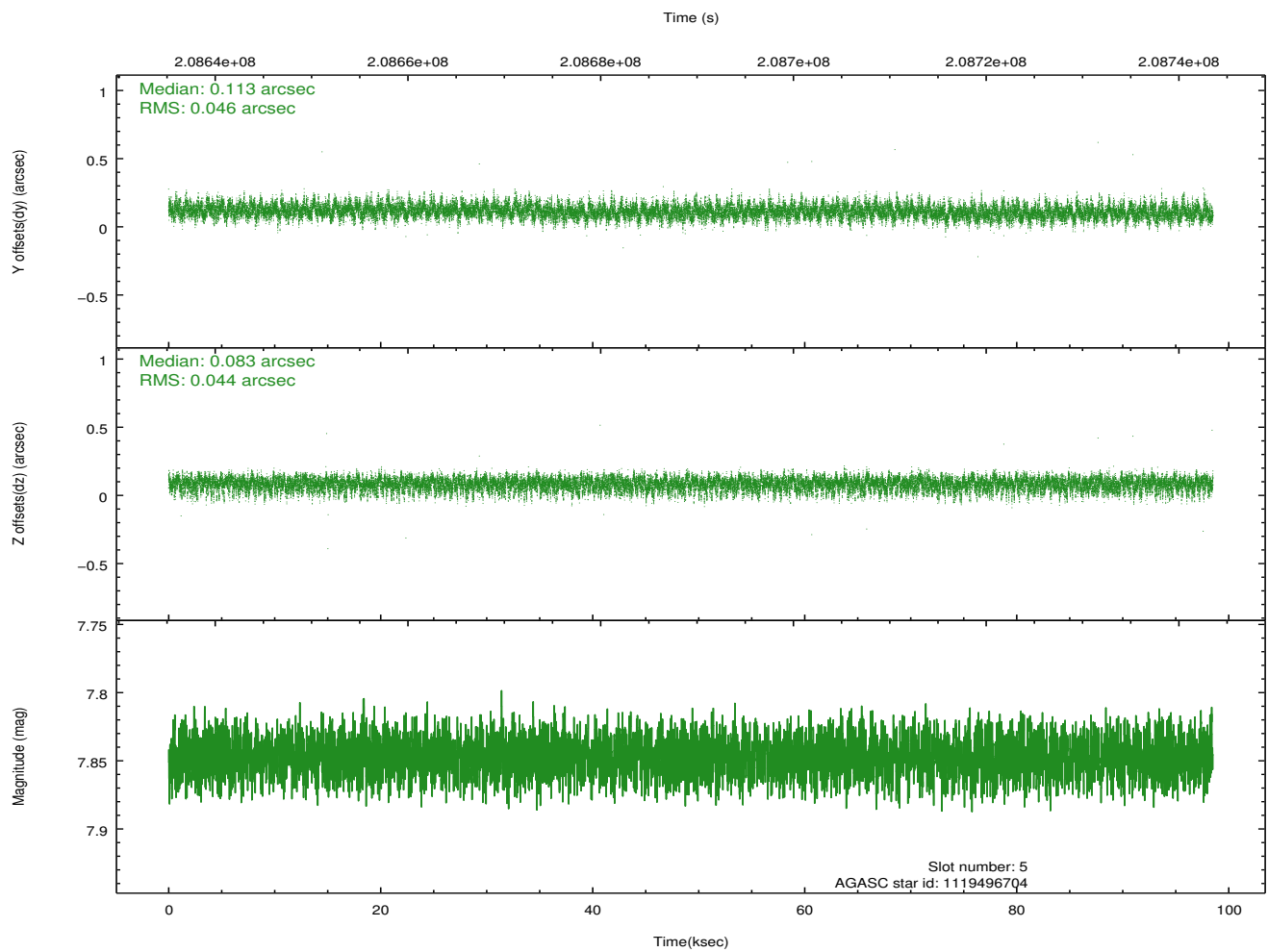
2.4.1 Slot 3



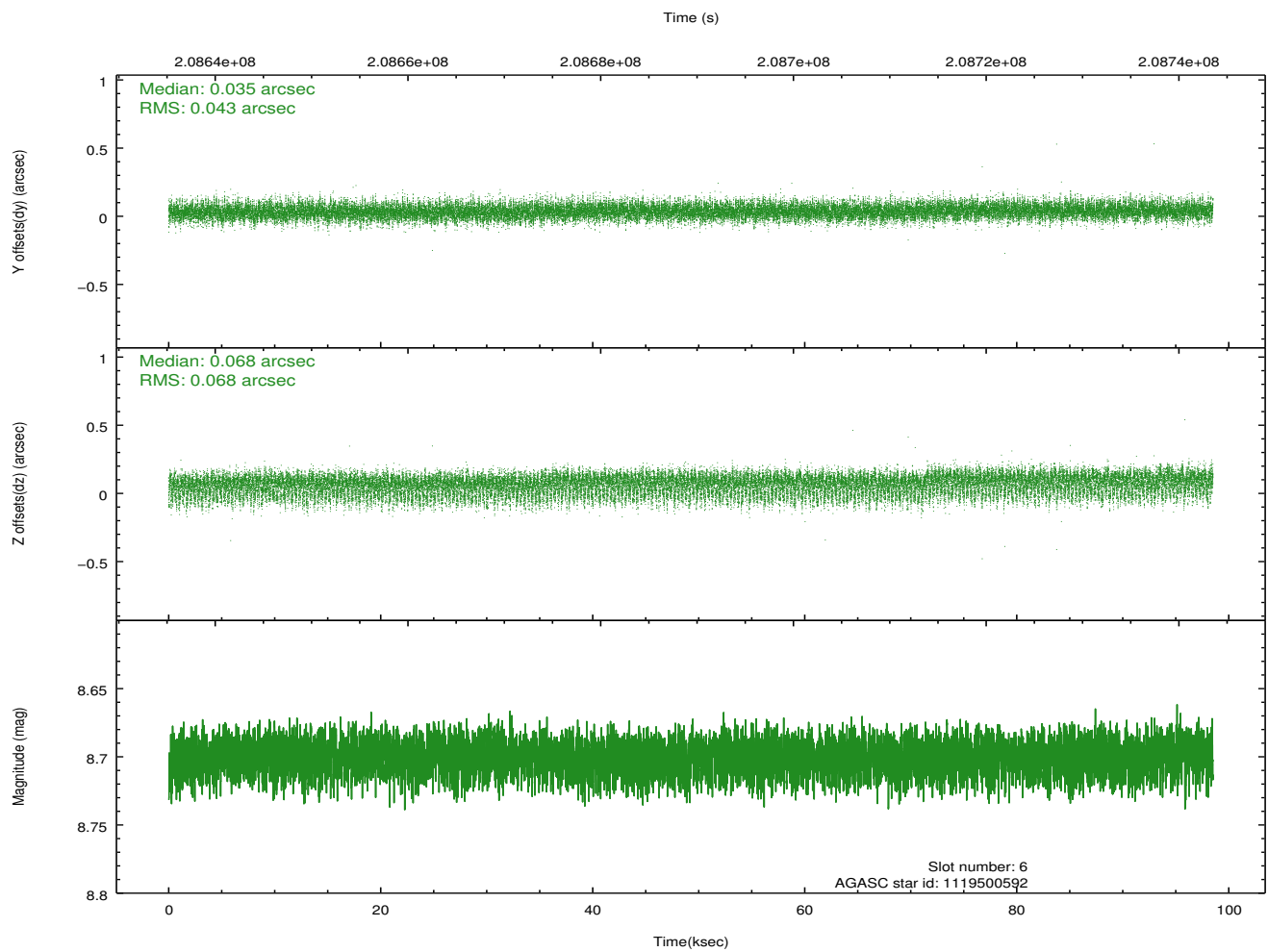
2.4.2 Slot 4



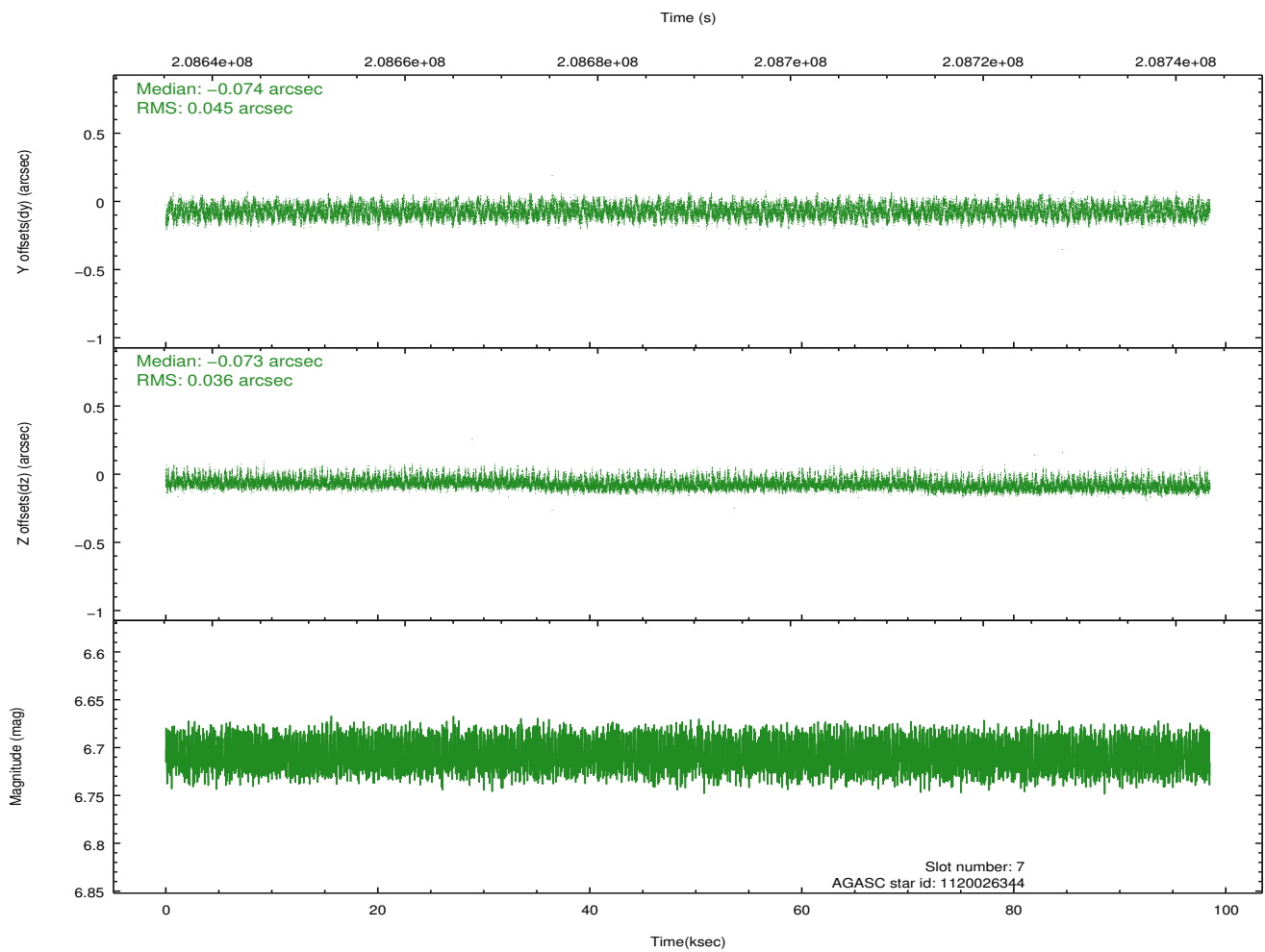
2.4.3 Slot 5



2.4.4 Slot 6

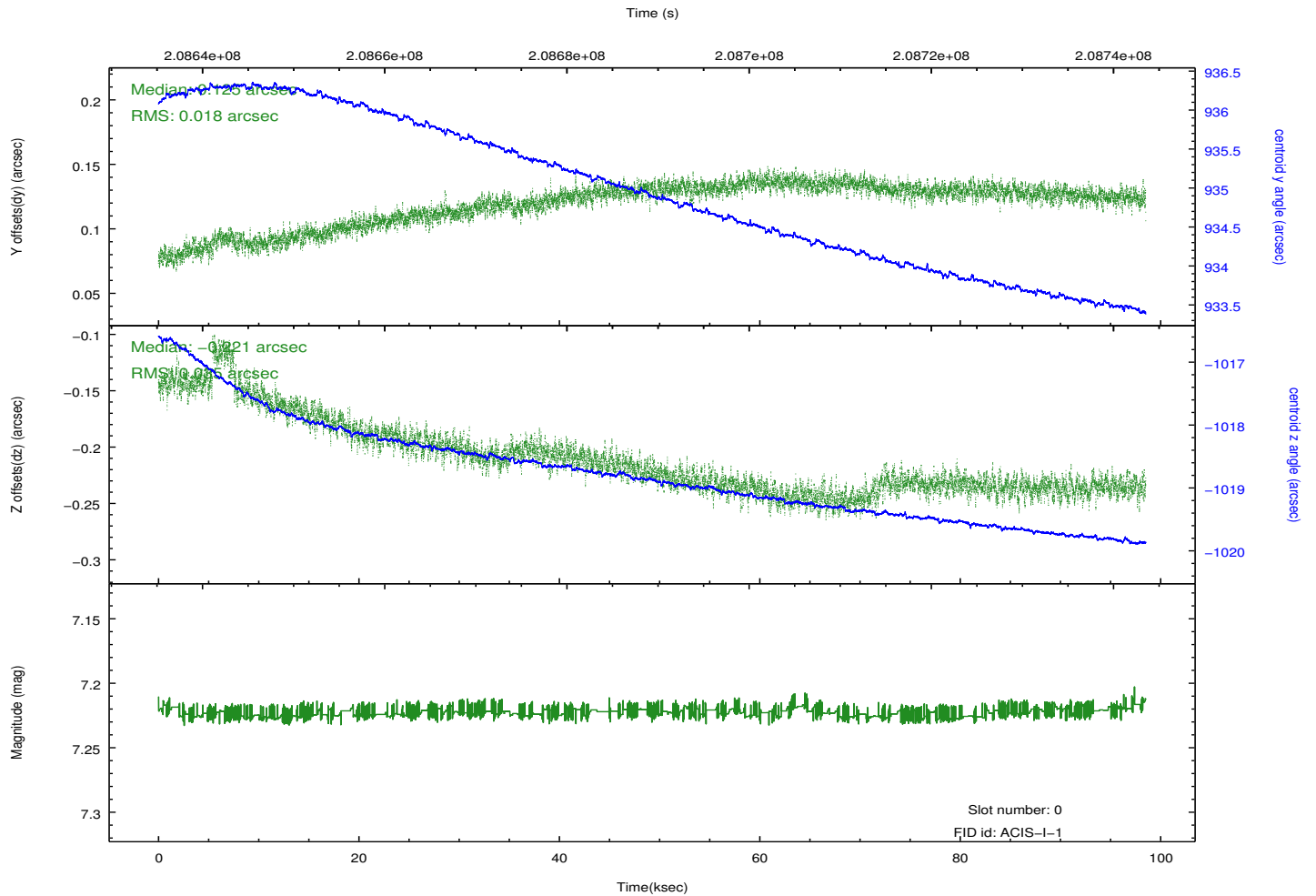
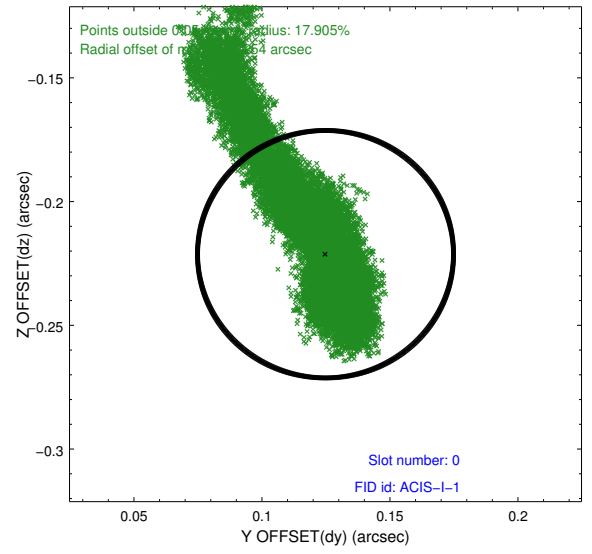
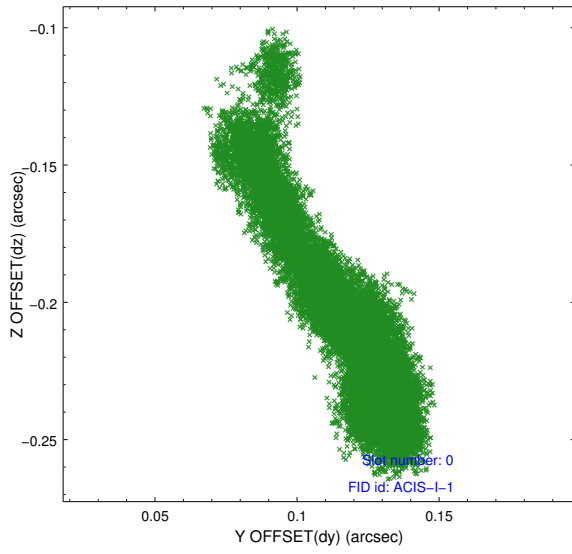


2.4.5 Slot 7

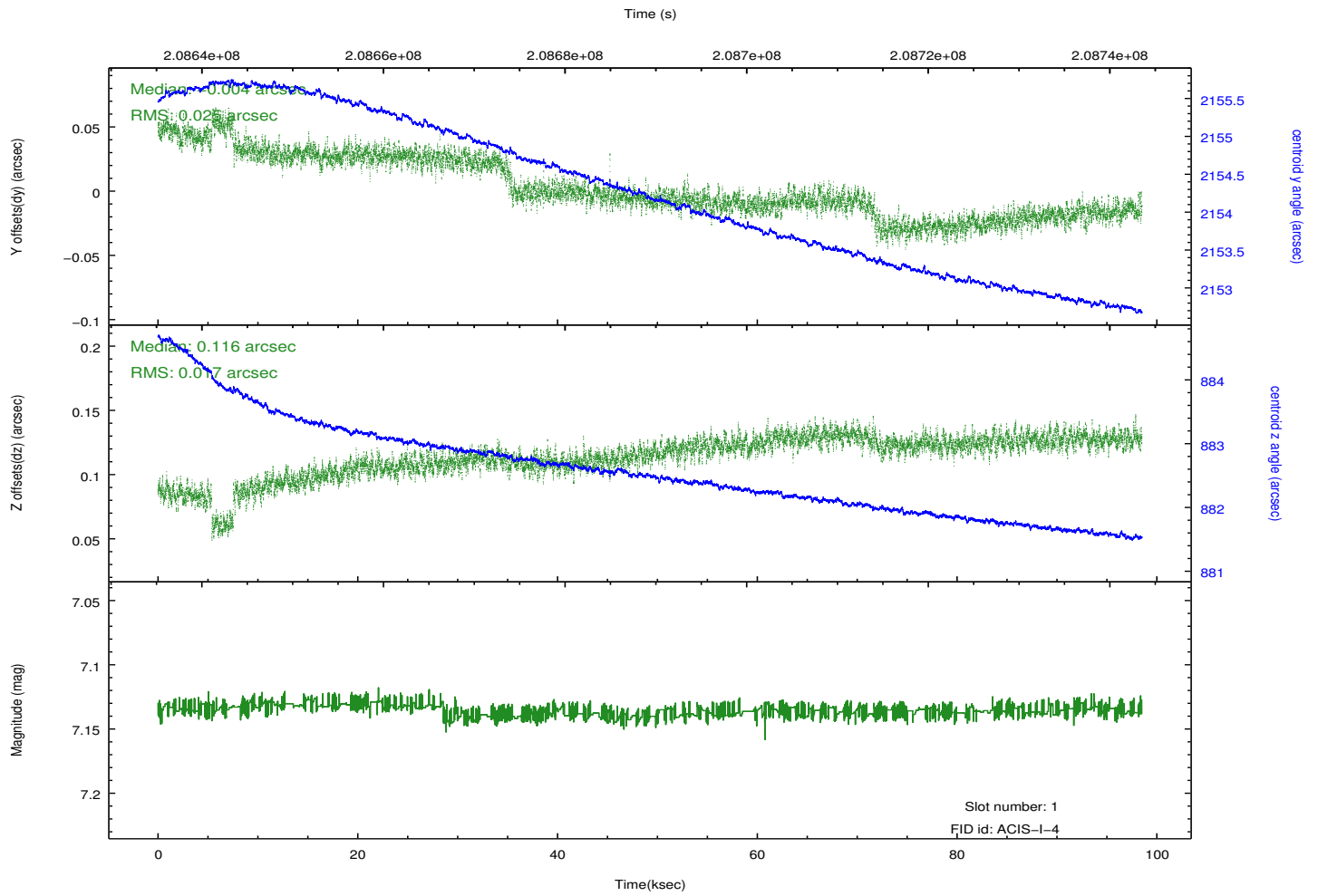
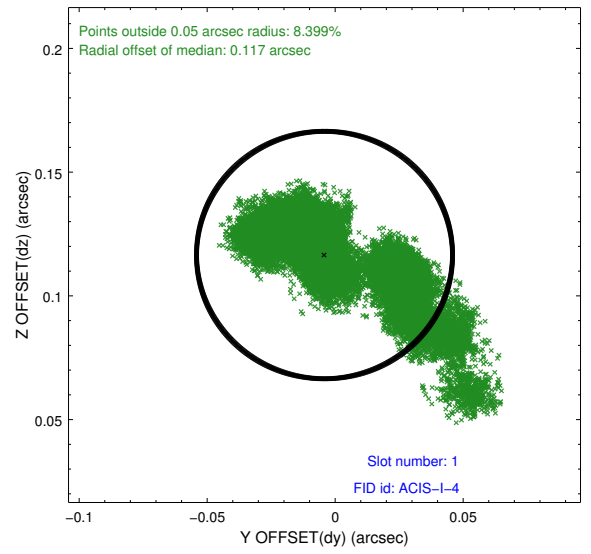
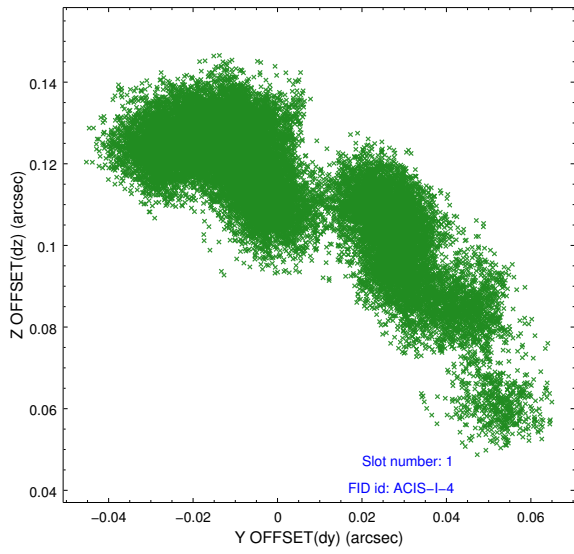


2.5 FID Slots

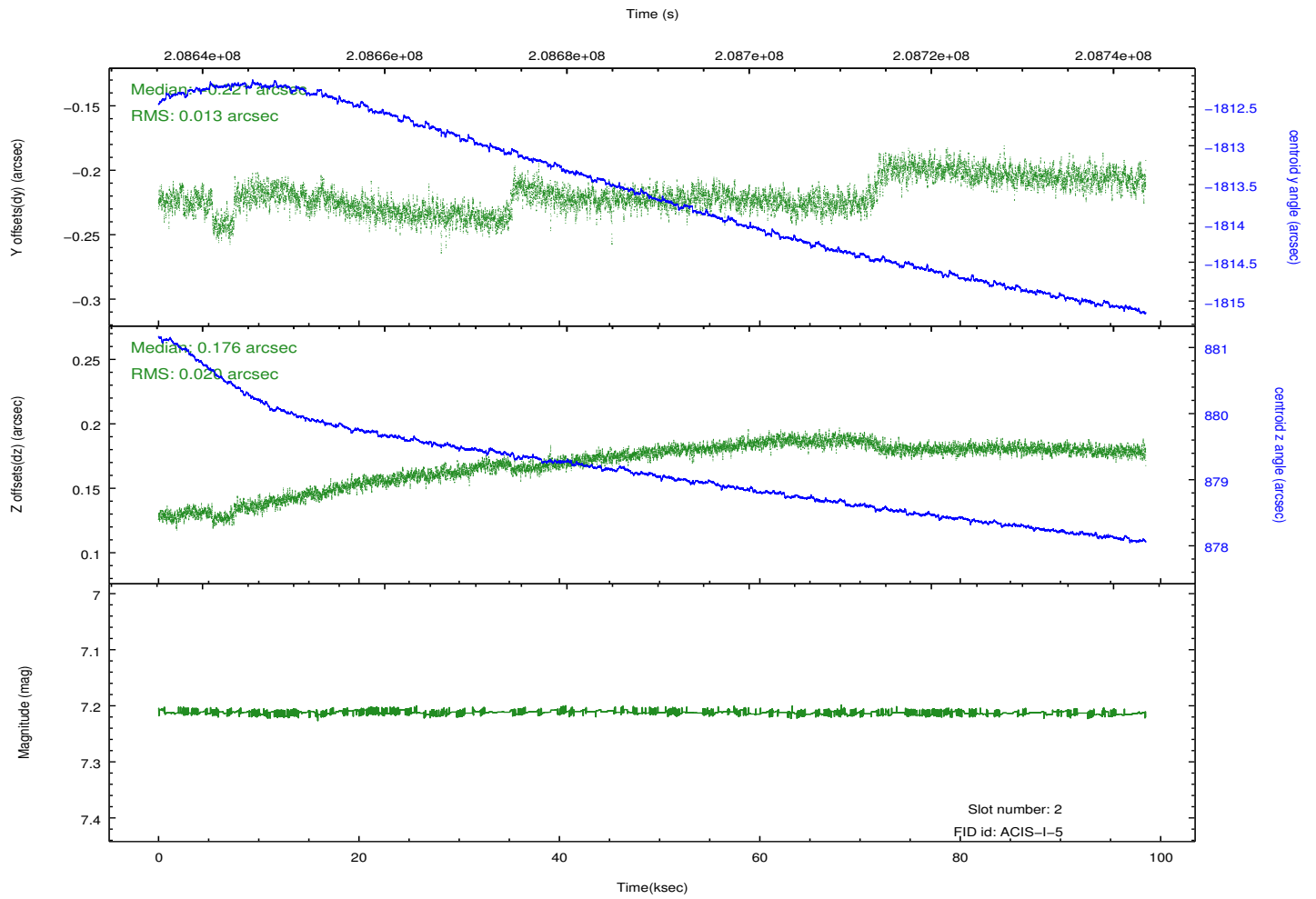
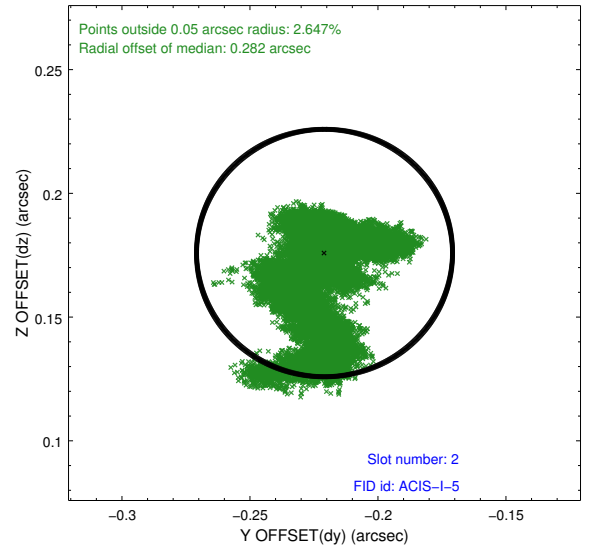
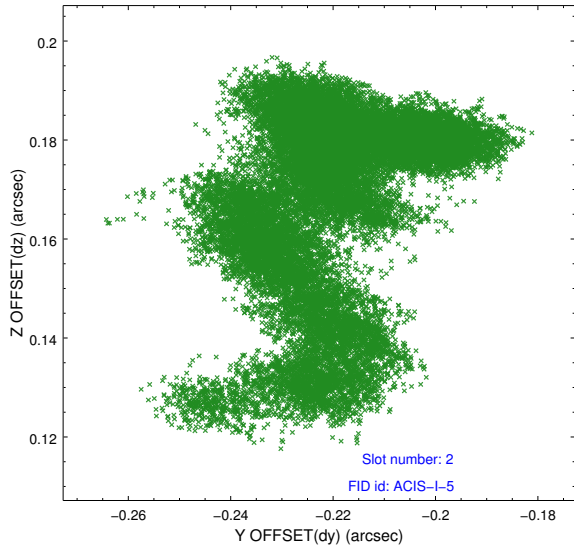
2.5.1 Slot 0



2.5.2 Slot 1



2.5.3 Slot 2



A Summary

A.1 Status

V&V Scientist	Jen Lauer
V&V Date (YYYY-MM-DD)	2012.12.21
V&V Edition	1
V&V Disposition and Status	OK
V&V Charge Time	98.492

A.2 Comments