

V&V Reference Report

L2 ASCDS Version : 8.4.3

Observation 5546 - L2 Version 4
Chandra X-Ray Center

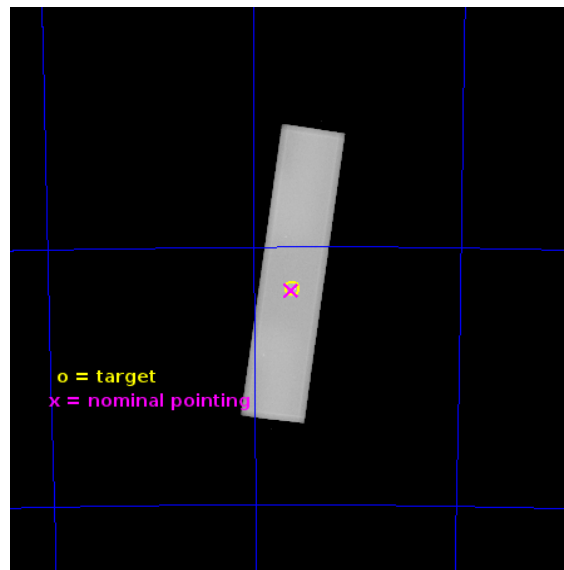
L2 Processing Date : Jun 28 2013

Contents

1	Front	2
2	OBI	3
2.1	OBI	3
2.1.1	Images	3
2.1.2	Parameters	4
2.1.3	Events	4
2.2	Compared Parameters	5
2.3	Aspect	6
2.4	Star Slots	9
2.4.1	Slot 3	9
2.4.2	Slot 4	10
2.4.3	Slot 5	11
2.4.4	Slot 6	12
2.4.5	Slot 7	13
2.5	FID Slots	14
2.5.1	Slot 0	14
2.5.2	Slot 1	15
2.5.3	Slot 2	16
A	Summary	17
A.1	Status	17
A.2	Comments	17

1 Front

seq_num	500535	Sequence number
obs_id	5546	Observation id
title	Search for Sub-Millisecond Pulsars in 47 Tuc	Proposal title
observer	Prof. Robert Rutledge	Principal investigator
object	47 Tuc	Source name
ra_targ	6.021667	Observer's specified target RA [deg]
dec_targ	-72.080528	Observer's specified target Dec [deg]
ra_nom	6.0232992192782	Nominal RA [deg]
dec_nom	-72.085184398845	Nominal Dec [deg]
roll_nom	277.68211244692	Nominal Roll [deg]
revision	4	Processing version of data
ontime	50146.333571941	[s]
livetime	48274.262232428	Ontime multiplied by DTCOR
l2events	3129536	Number of level 2 events

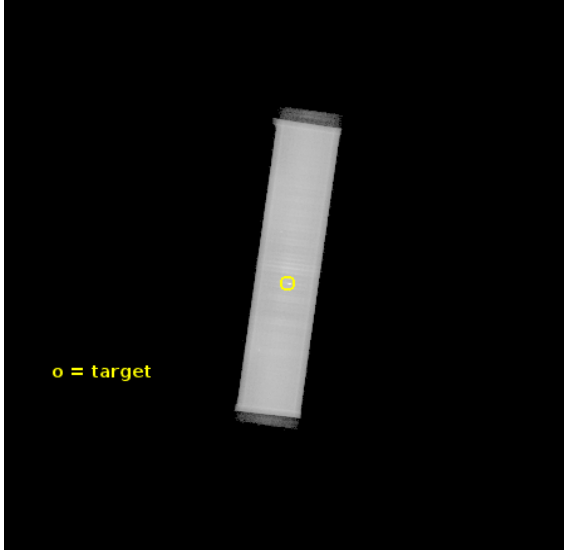


2 OBI

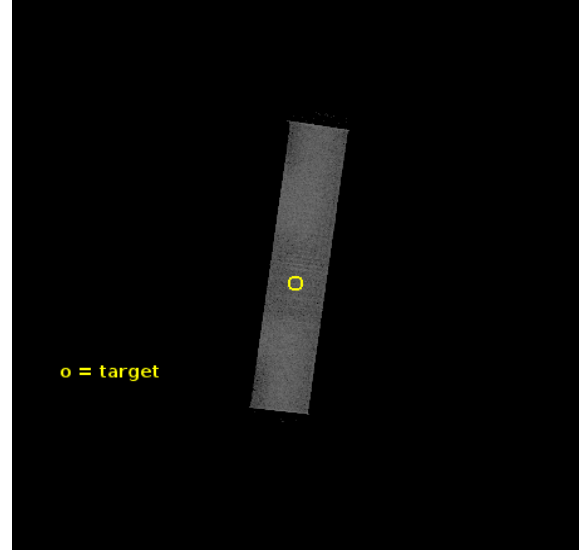
2.1 OBI

2.1.1 Images

Level 1 Image



Level 1 Bad Events



2.1.2 Parameters

obi_num	0	Obi number	sched_exp_time	50000.000000	[s] Scheduled observation exposure time
ascdsver	10	Processing system revision	ontime	50146.333571941	[s]
caldbver	4.5.7	 	l1events	4240735	Number of level 1 events
date	2013-06-29T02:27:14	Date and time of file creation			
revision	4	Processing version of data			

2.1.3 Events

Level 1 Events

	segment 1	segment 2	segment 3
level 1 events	3742	4236984	9
rejected events	131	198935	1
rejected %	3%	4%	11%

2.2 Compared Parameters

Parameter	Planned	Actual
Instrument	HRC	HRC
Detector	HRC-S	HRC-S
Grating	NONE	NONE
Data mode	OBSERVING	OBSERVING
Observation mode	POINTING	POINTING
[deg] Pointing RA	5.962925	6.023299219278243
[deg] Pointing Dec	-72.063444	-72.08518439884489
[deg] Pointing Roll	277.557334	277.6821124469179
[mm] SIM focus pos	-1.533336	-1.526339935833849
[mm] SIM defocus	7.710433287538843e-07	0.006996703570447904
[mm] SIM translation stage pos	250.455976	250.466033080201
[mm] SIM translation stage offset	0	-0.01005468664627074
[s] Observation start time (MET)	252050032.184000	252048887.05937
Observation start date	2005-12-27T05:52:48	2005-12-27T05:34:47
[s] Observation end time (MET)	252100032.184000	252100926.31178
Observation end date	2005-12-27T19:46:08	2005-12-27T20:02:06

Parameter	Planned	Actual
Obspar format version number	7	7
Obspar file type	PREDICTED	ACTUAL
Obspar update status	NONE	UPDATED

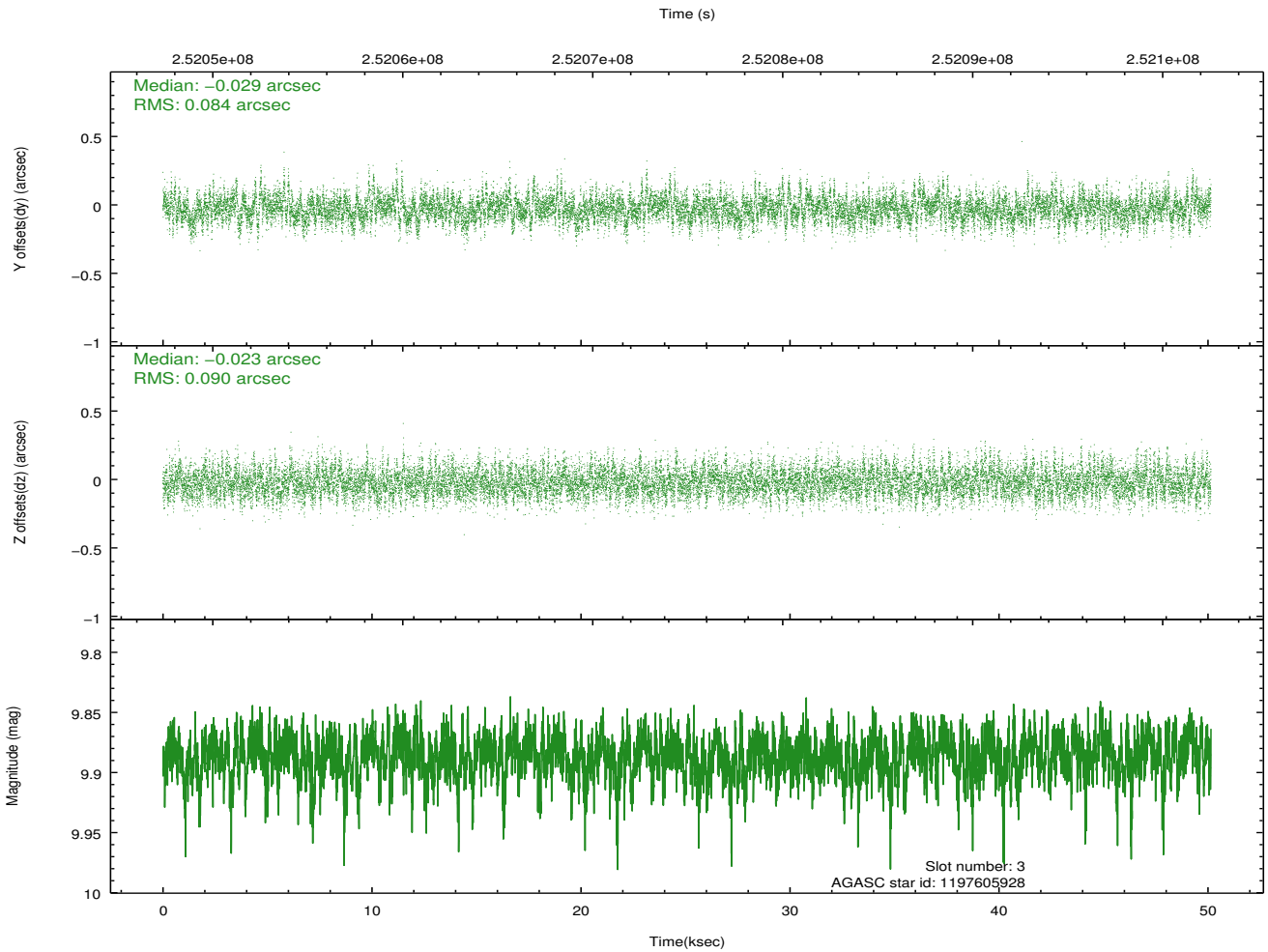
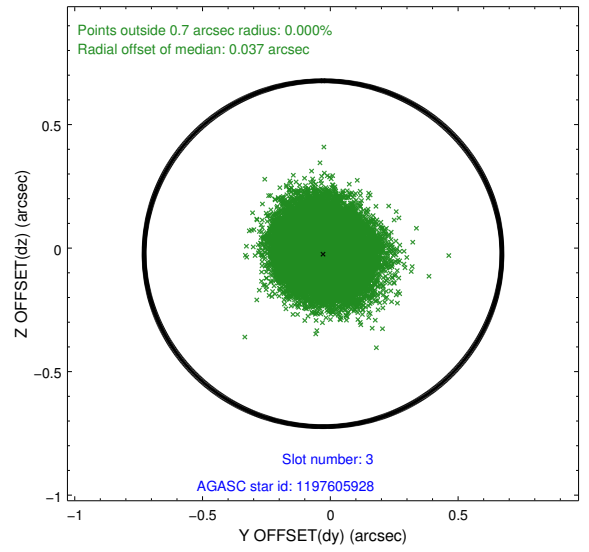
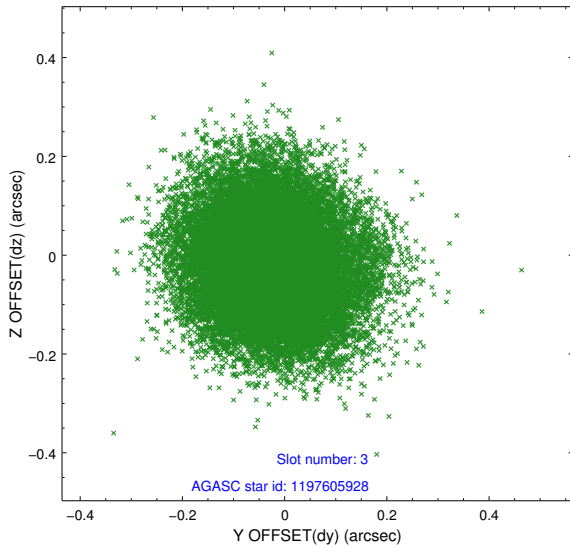
2.3 Aspect

Slot Statistics

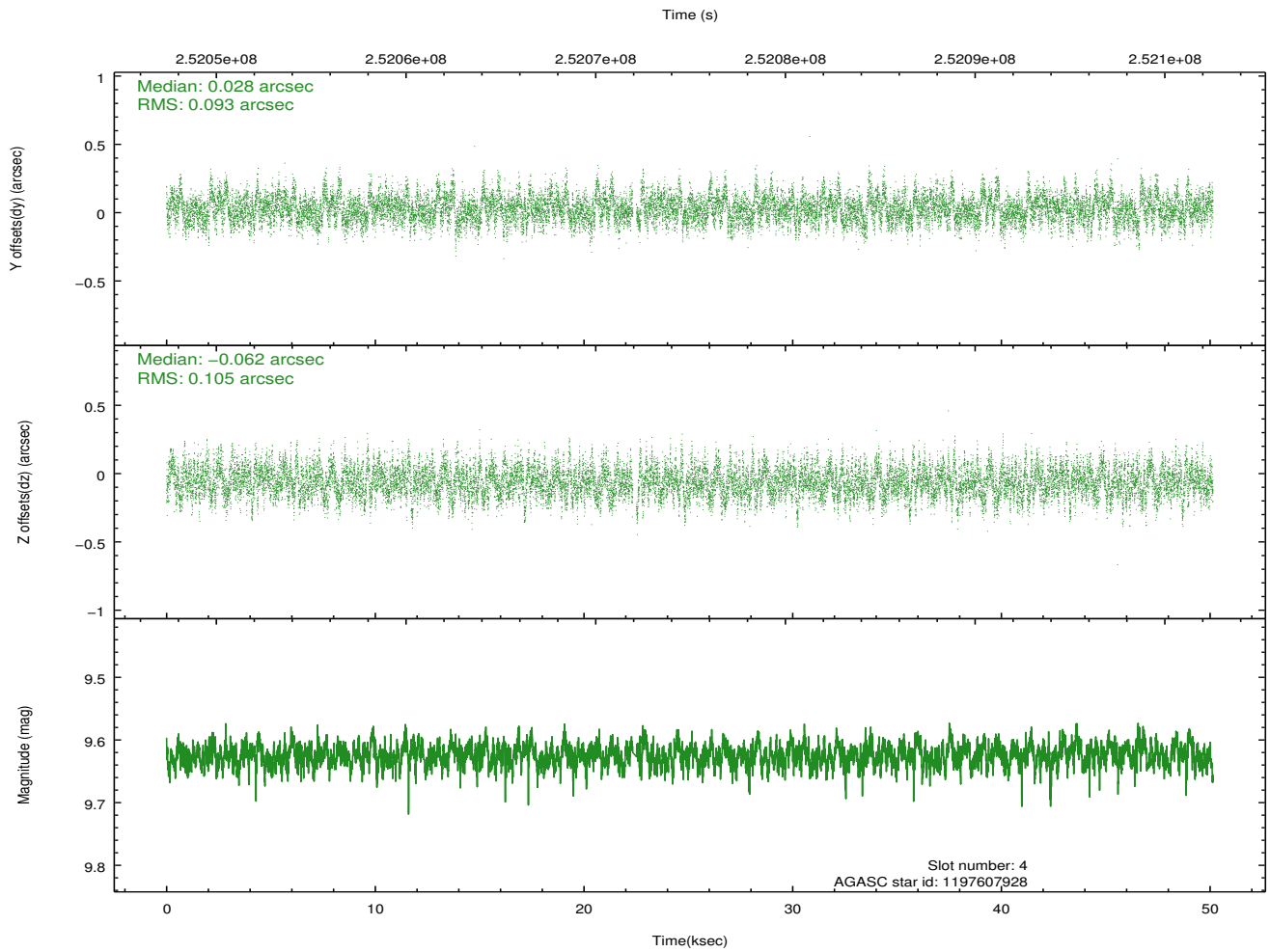
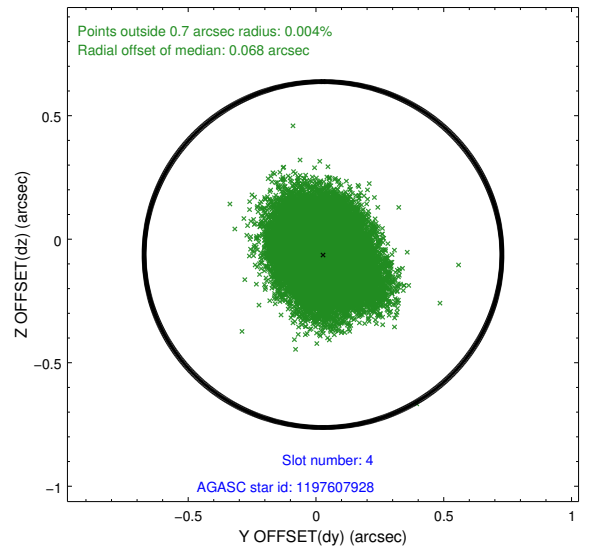
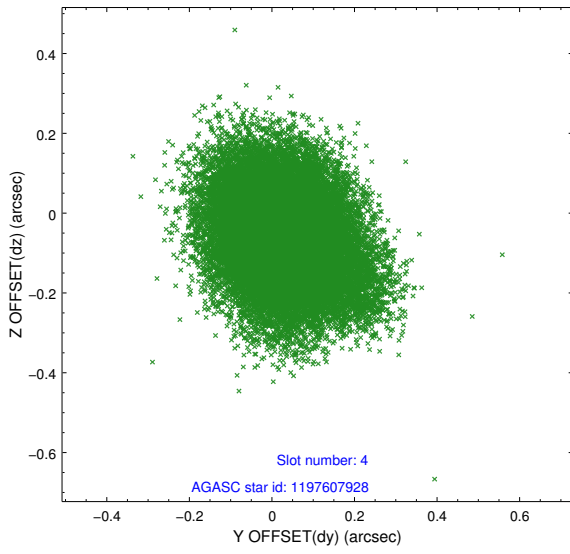
slot	status	id	mag	n_pts	med_dy	med_dz	dr1	dr2	ra	dec	mean_y	mean_z
0	FID	HRC-S-1	7.01	12230	0.079	-0.168	0.025	0.049	0.000000	0.000000	-1162.94	-459.81
1	FID	HRC-S-3	7.03	12231	0.090	-0.051	0.030	0.056	0.000000	0.000000	-1165.79	569.81
2	FID	HRC-S-4	6.98	12230	0.217	-0.078	0.009	0.014	0.000000	0.000000	1235.29	572.51
3	GUIDE	1197605928	9.89	24377	-0.029	-0.023	0.131	0.212	4.361277	-72.423732	1080.58	-1899.17
4	GUIDE	1197607928	9.62	24232	0.028	-0.062	0.149	0.243	7.837743	-72.165759	669.29	1996.35
5	GUIDE	1197620848	10.03	24413	0.007	-0.066	0.179	0.298	3.913465	-71.739620	-1420.10	-2143.32
6	GUIDE	1197617752	10.26	24425	0.049	0.185	0.184	0.294	4.480632	-72.284129	594.54	-1716.37
7	GUIDE	1197621088	9.91	24350	-0.062	-0.030	0.166	0.280	3.823480	-72.180366	149.73	-2395.77

2.4 Star Slots

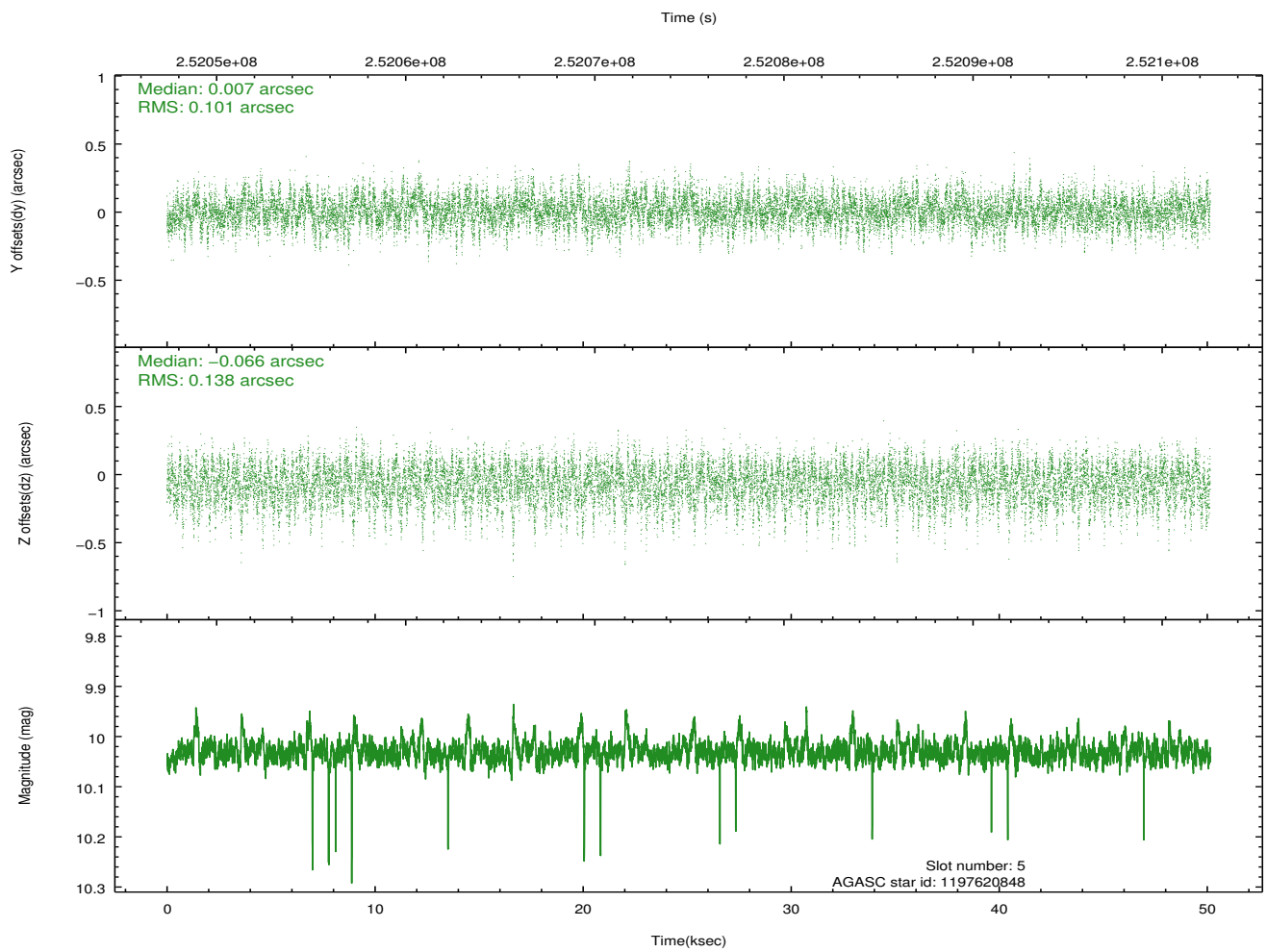
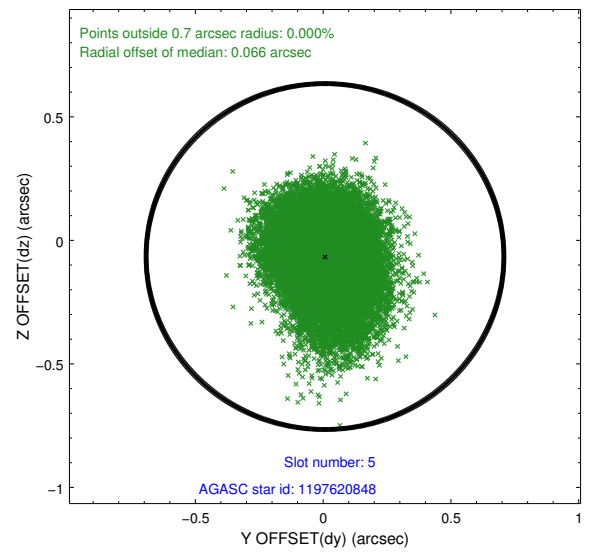
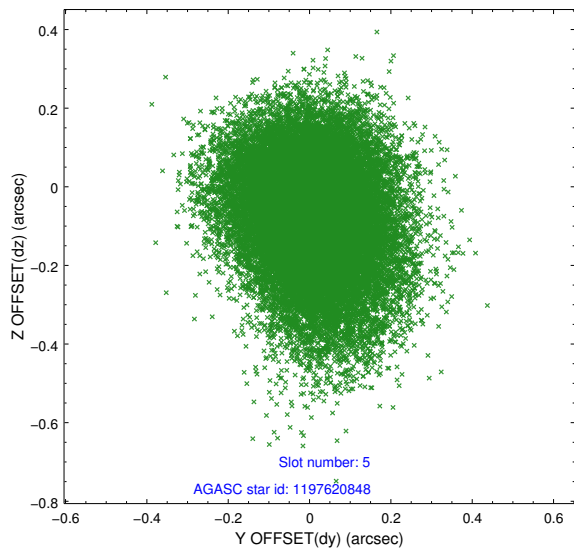
2.4.1 Slot 3



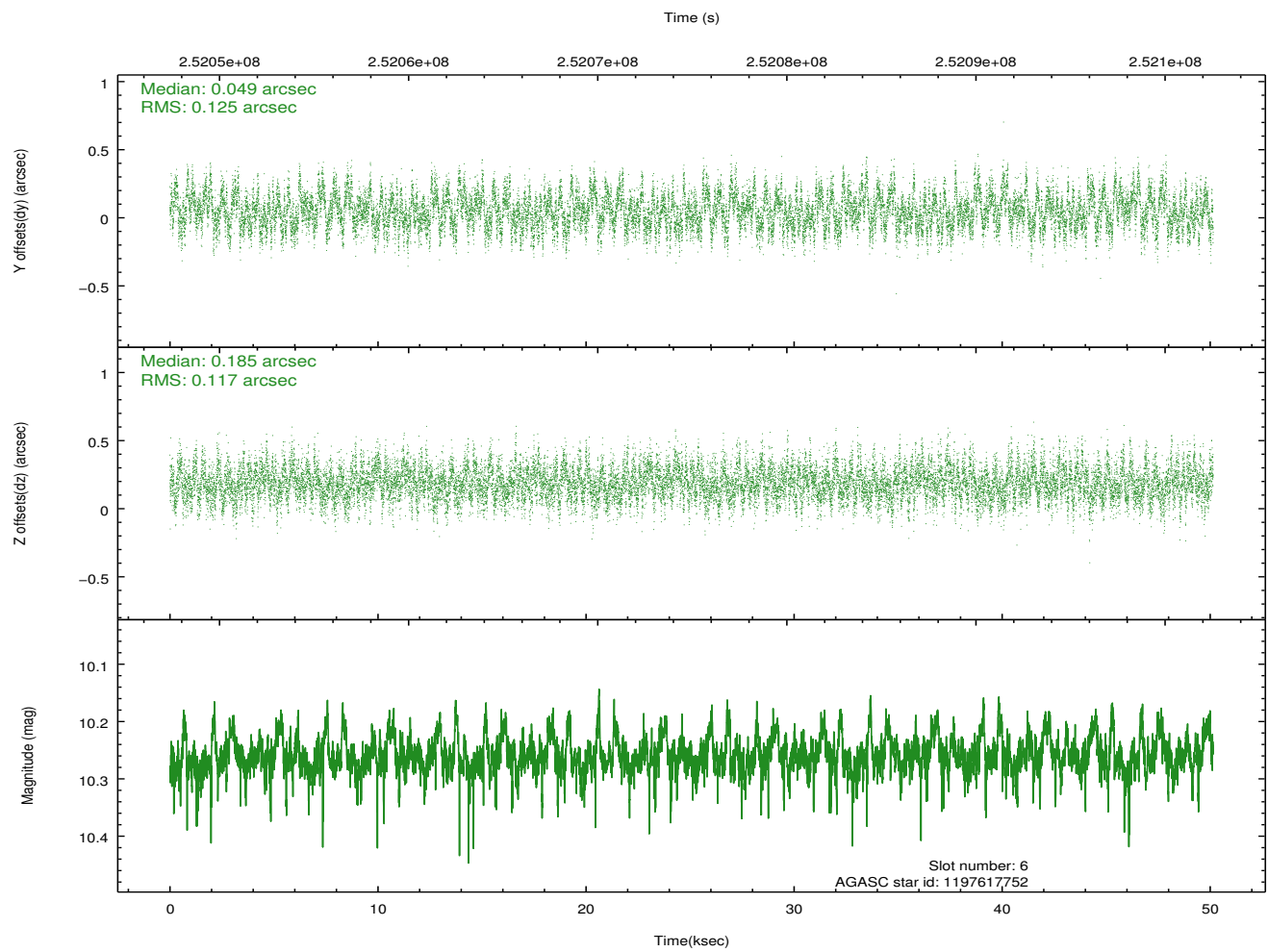
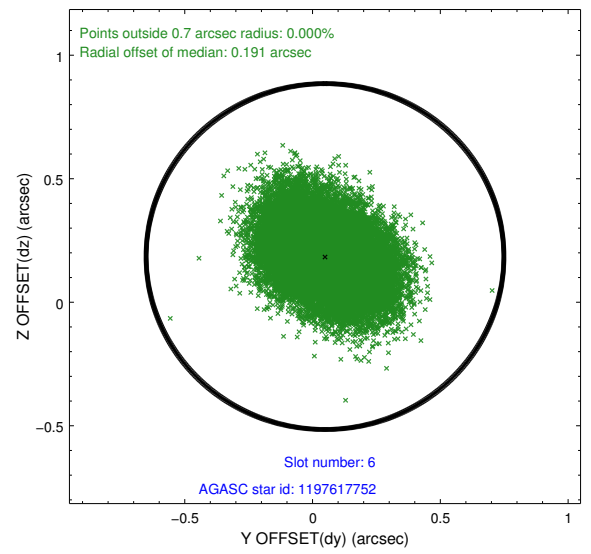
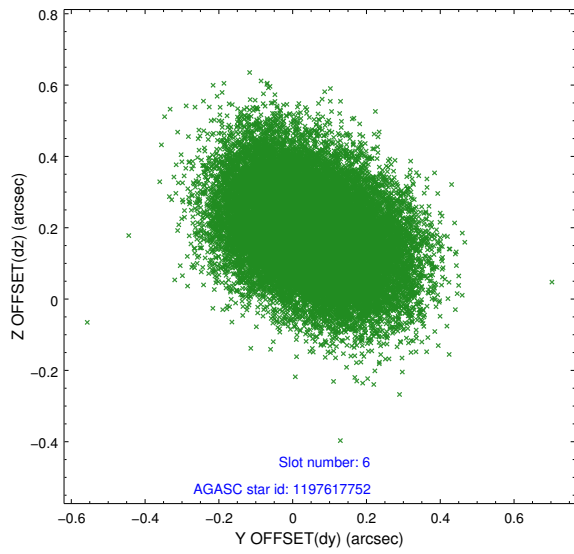
2.4.2 Slot 4



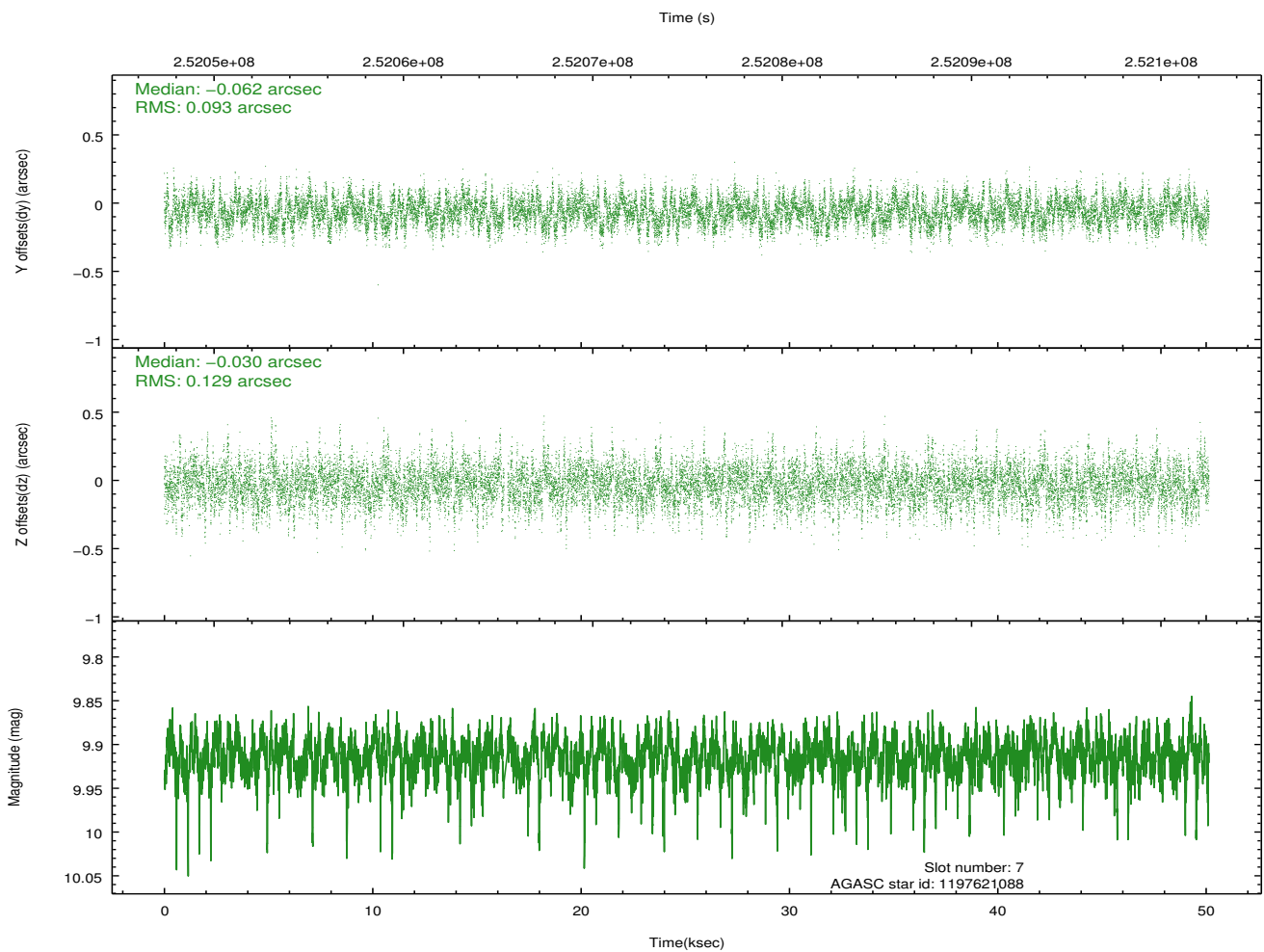
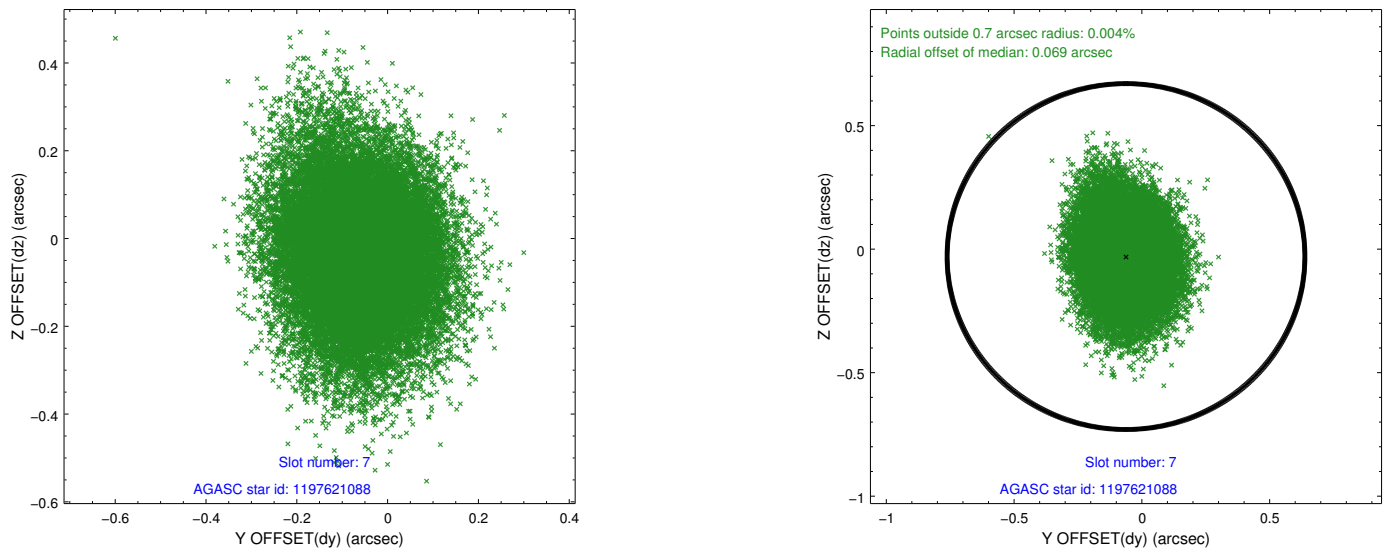
2.4.3 Slot 5



2.4.4 Slot 6

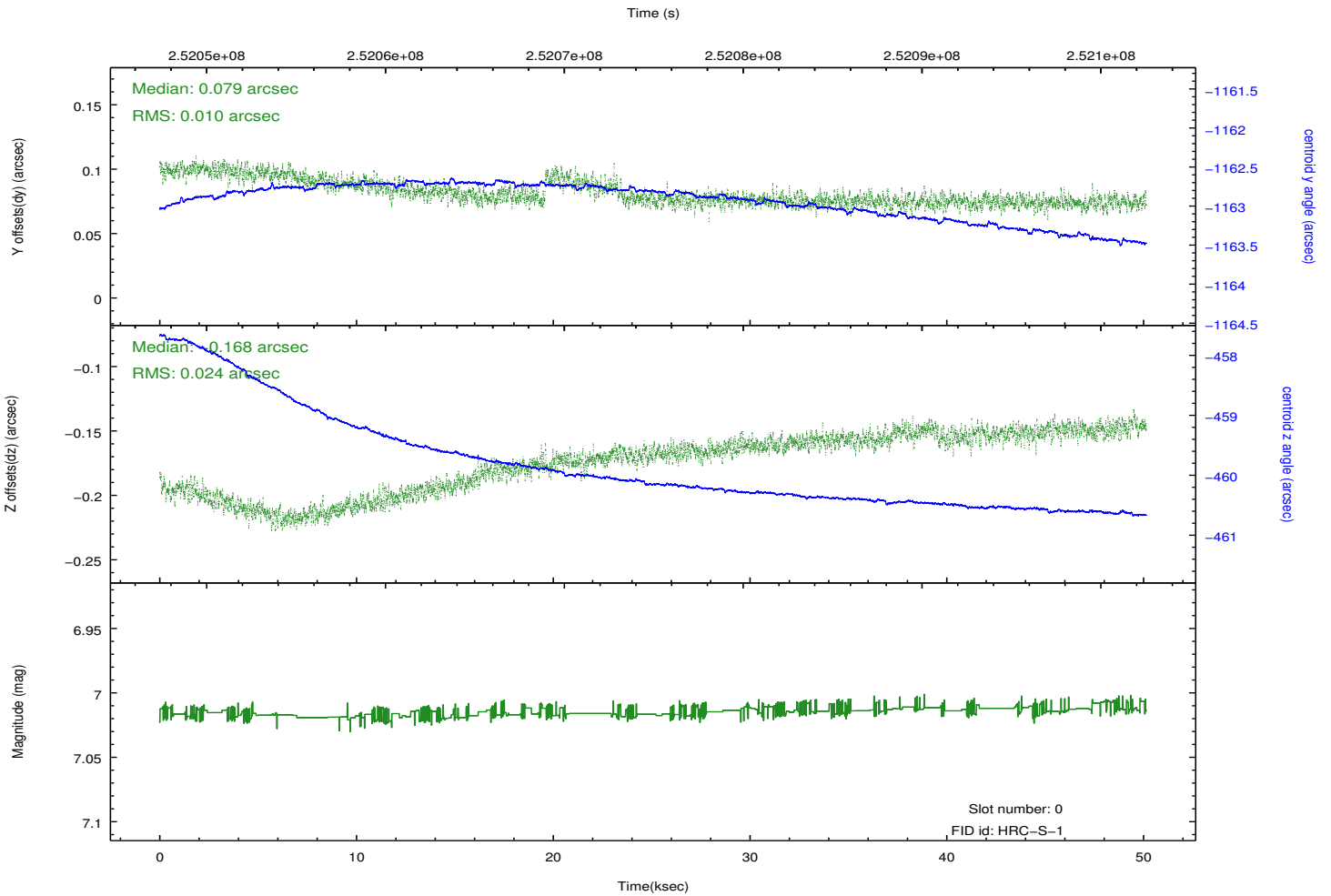
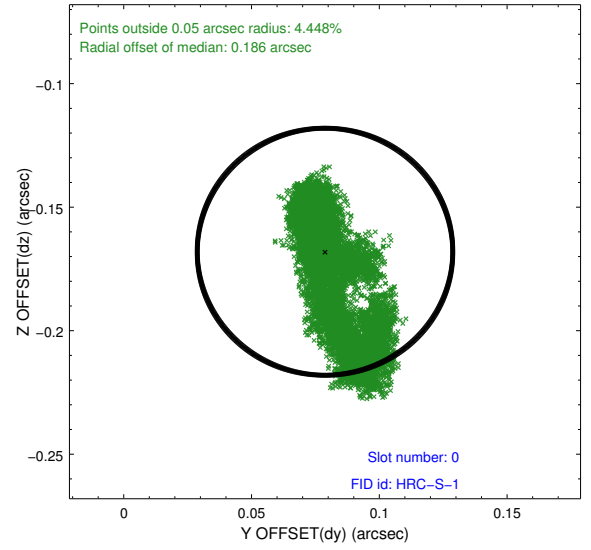
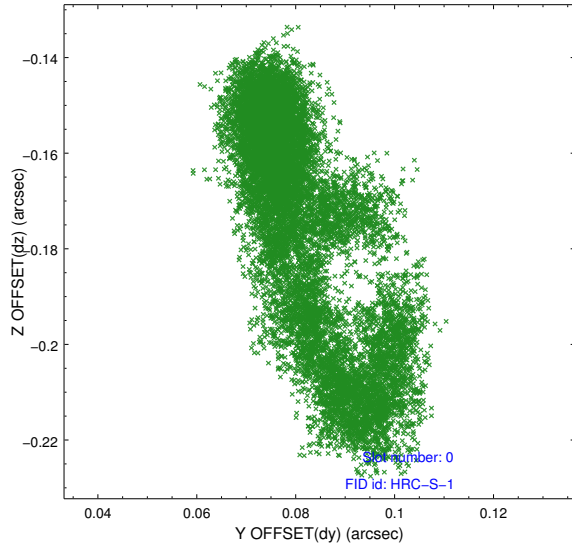


2.4.5 Slot 7

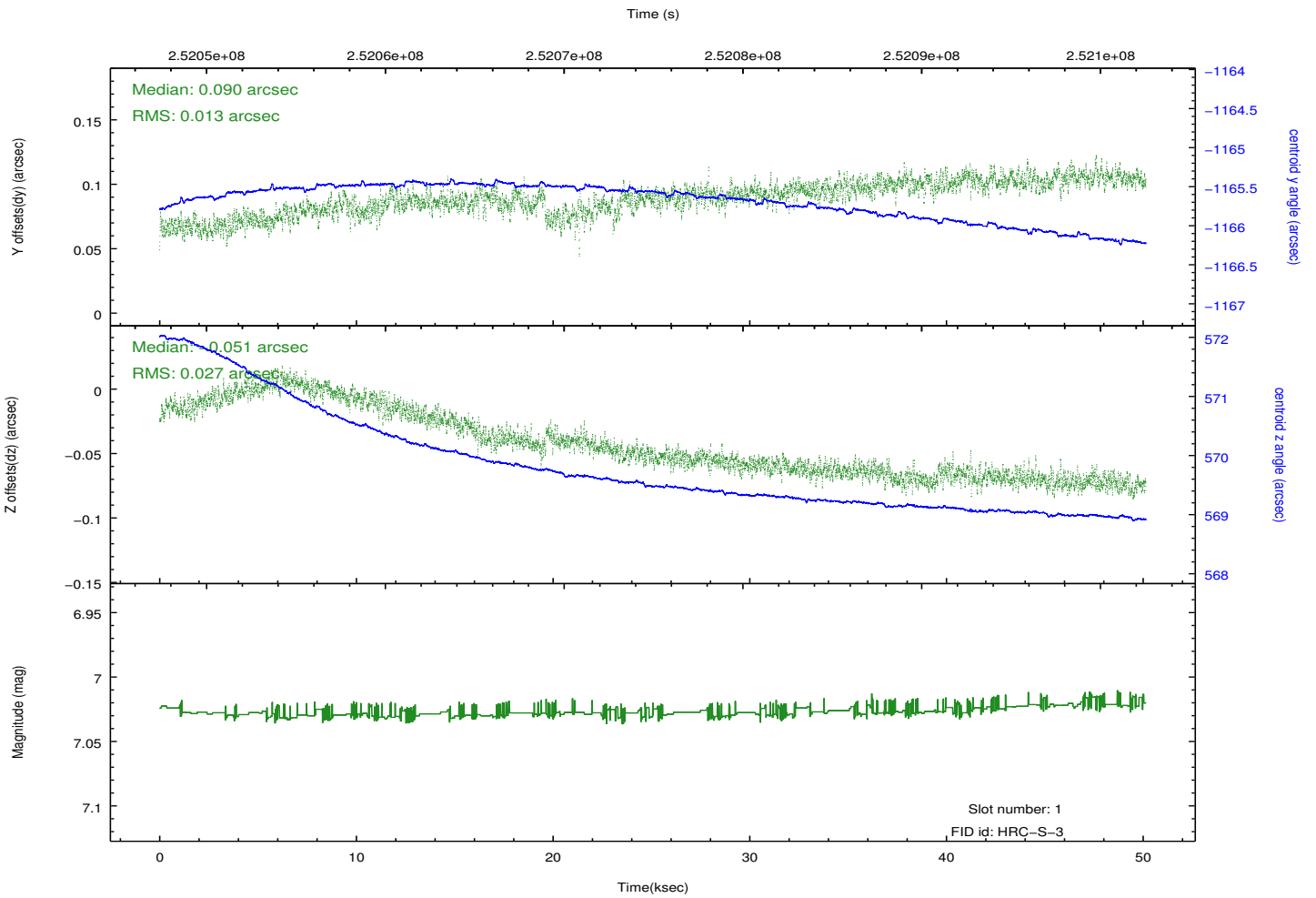
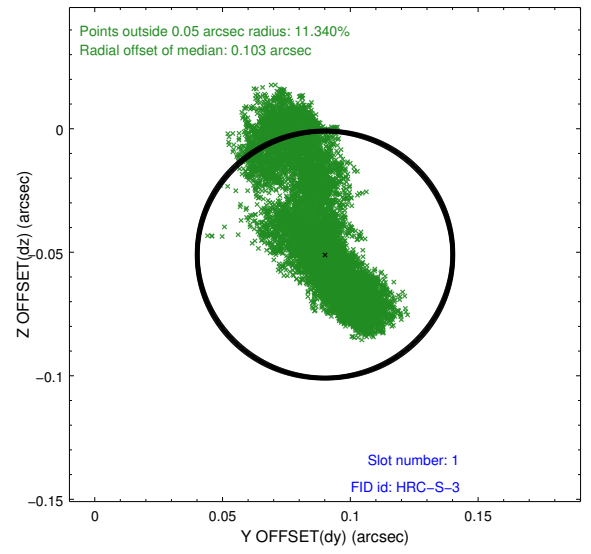
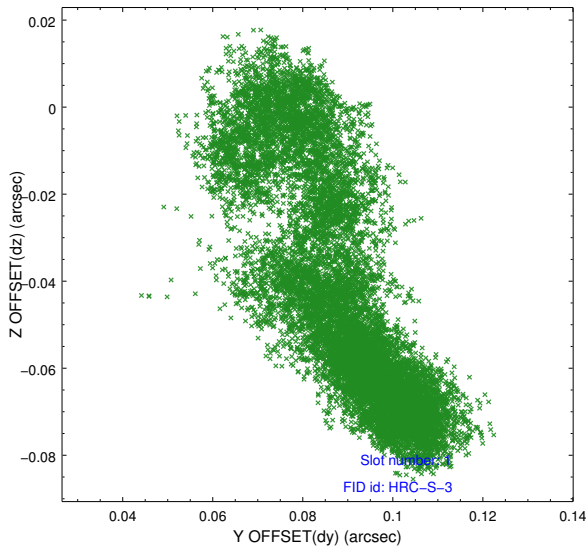


2.5 FID Slots

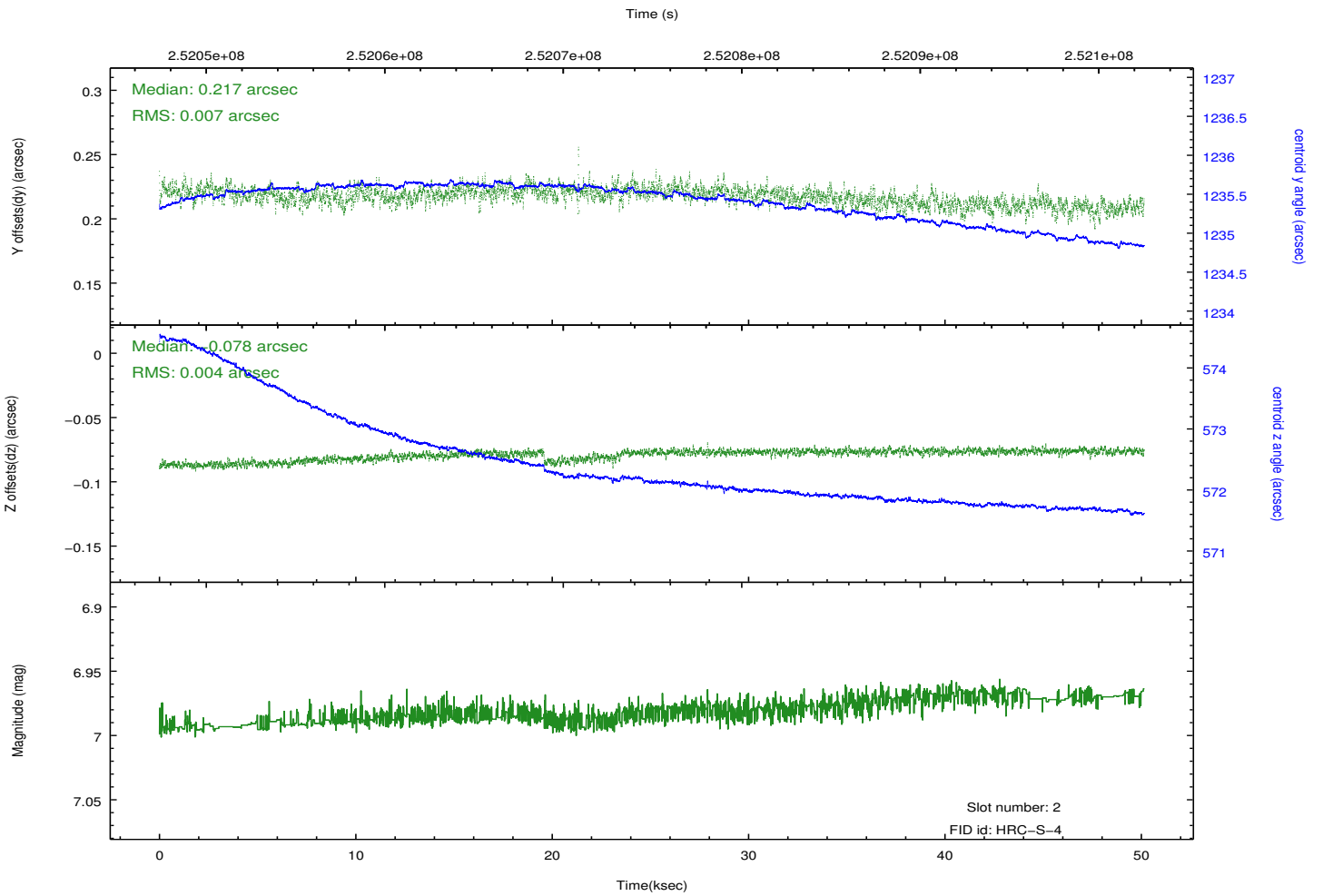
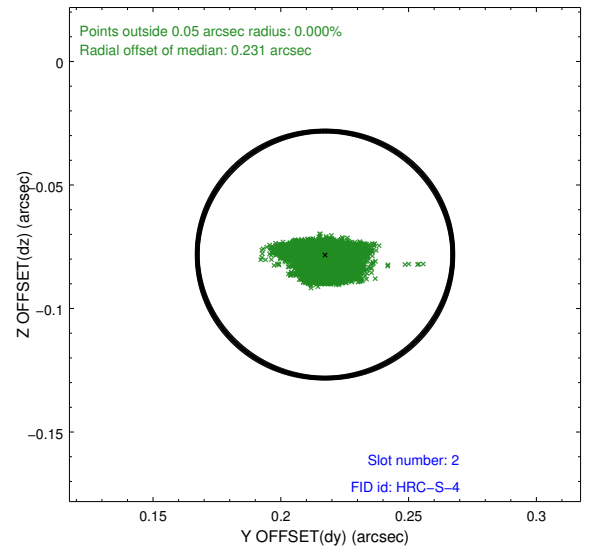
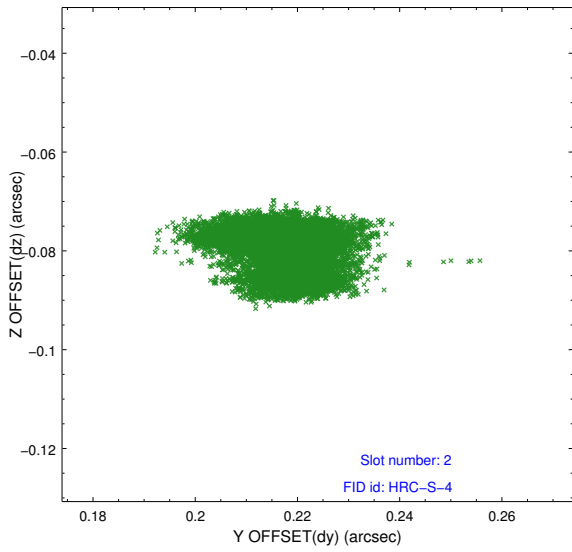
2.5.1 Slot 0



2.5.2 Slot 1



2.5.3 Slot 2



A Summary

A.1 Status

V&V Scientist	Beth Sundheim
V&V Date (YYYY-MM-DD)	2013.07.01
V&V Edition	1
V&V Disposition and Status	OK
V&V Charge Time	50.14633

A.2 Comments