

V&V Reference Report

L2 ASCDS Version : 8.4.3

Observation 55476 - L2 Version 2
Chandra X-Ray Center

L2 Processing Date : Feb 8 2012

Contents

1	Front	2
2	OBI	3
2.1	OBI	3
2.1.1	Images	3
2.1.2	Bias	3
2.1.3	Parameters	4
2.1.4	Events	4
2.2	Compared Parameters	5
2.3	Star Slots	6
2.4	FID Slots	6
A	Summary	7
A.1	Status	7
A.2	Comments	7

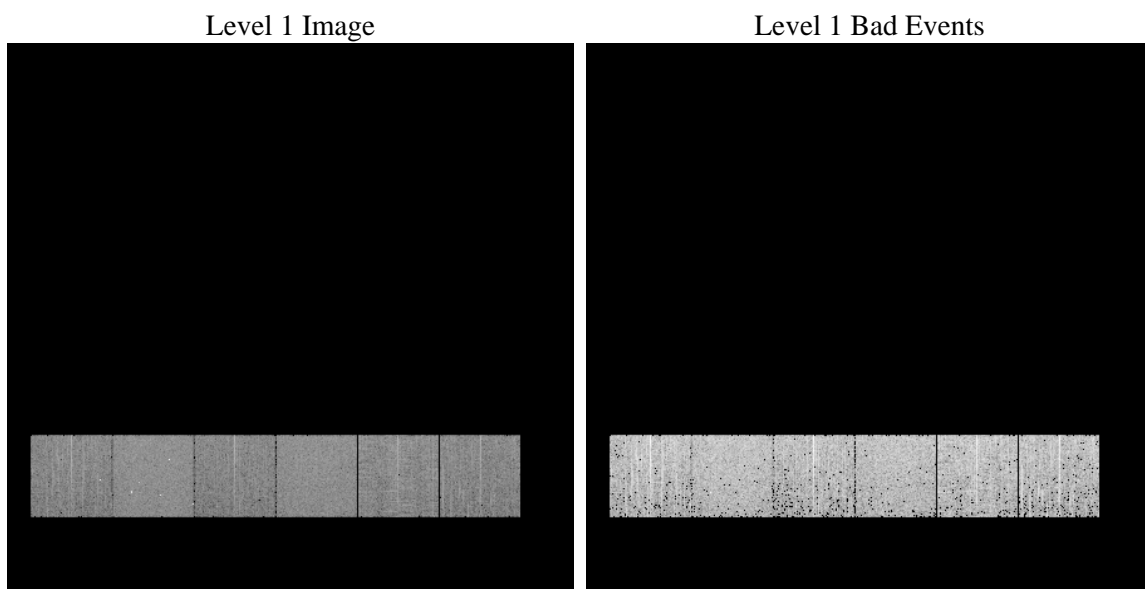
1 Front

seq_num	 	Sequence number
obs_id	55476	Observation id
title	ACIS-456789 diagnostics	Proposal title
observer	CHANDRA engineering request/realtime commanding	Principal investig
object	 	Source name
dtycle	0	
cycle	P	events from which exps? Prim/Second/Both
ra_targ	0.0	Observer's specified target RA [deg]
dec_targ	0.0	Observer's specified target Dec [deg]
ra_nom	114.00967496932	Nominal RA [deg]
dec_nom	-14.023608574102	Nominal Dec [deg]
roll_nom	253.54619129472	Nominal Roll [deg]
revision	2	Processing version of data
ontime	3283.0445771813	Sum of GTIs [s]
livetime	3241.472689933	Livetime [s]
ontime4	3282.9214571714	Sum of GTIs [s]
ontime5	3283.003537178	Sum of GTIs [s]
ontime6	3282.9624971747	Sum of GTIs [s]
ontime7	3283.0445771813	Sum of GTIs [s]
ontime8	3282.8804171681	Sum of GTIs [s]
ontime9	3283.0856171846	Sum of GTIs [s]
l2events	139897	Number of level 2 events

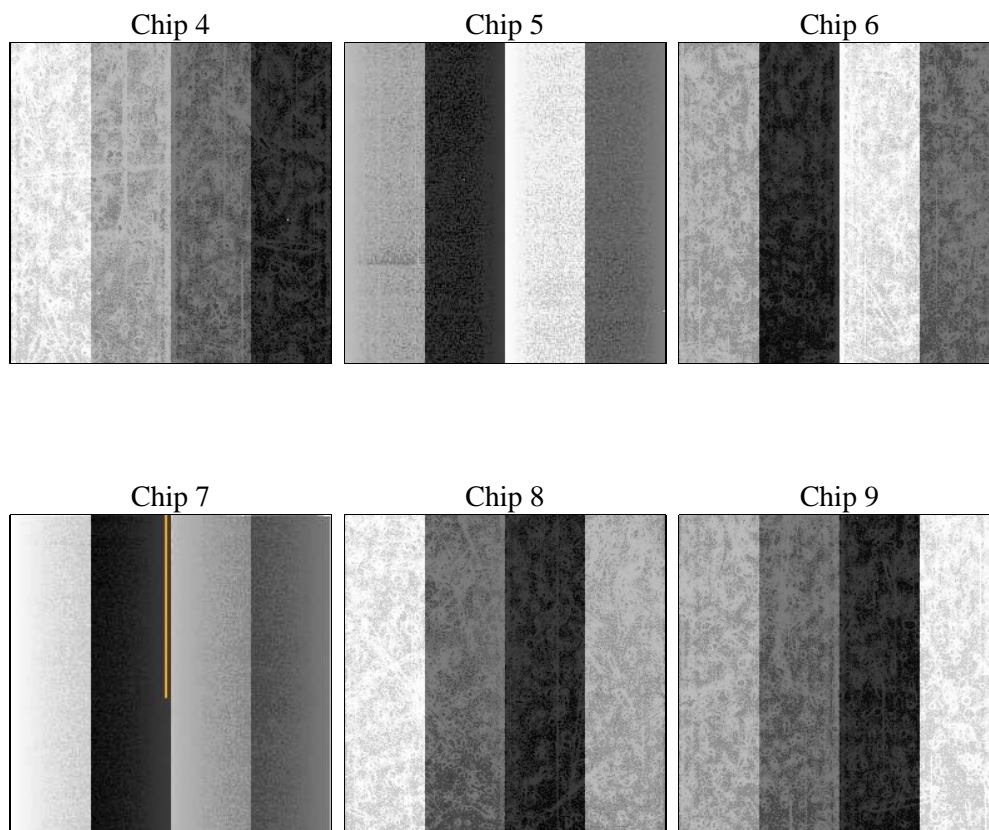
2 OBI

2.1 OBI

2.1.1 Images



2.1.2 Bias



2.1.3 Parameters

obi_num	0	Obi number	sched_exp_time	0.0	[s] Scheduled observation exposure time
ascdsver	8.4.3	Processing system revision	ontime	3283.0445771813	Sum of GTIs [s]
caldbver	4.4.7	 	ontime4	3282.9214571714	Sum of GTIs [s]
date	2012-02-09T00:55:12	Date and time of file creation	ontime5	3283.003537178	Sum of GTIs [s]
			ontime6	3282.9624971747	Sum of GTIs [s]
revision	2	Processing version of data	ontime7	3283.0445771813	Sum of GTIs [s]
			ontime8	3282.8804171681	Sum of GTIs [s]
			ontime9	3283.0856171846	Sum of GTIs [s]
			l1events	302479	Number of level 1 events

2.1.4 Events

	ccd 4	ccd 5	ccd 6	ccd 7	ccd 8	ccd 9
level 1 events	46469	59446	43589	56006	51737	45232
rejected events	25809	24223	22744	23664	26498	24694
rejected %	55%	40%	52%	42%	51%	54%

	ccd 4	ccd 5	ccd 6	ccd 7	ccd 8	ccd 9
grade 0 events	11799	6010	10679	5511	12078	10758
	25%	10%	24%	9%	23%	23%
grade 1 events	101	123	58	45	69	67
	0%	0%	0%	0%	0%	0%
grade 2 events	3330	11916	3767	7094	4951	3733
	7%	20%	8%	12%	9%	8%
grade 3 events	1379	1484	1427	3019	1836	1319
	2%	2%	3%	5%	3%	2%
grade 4 events	1460	1528	1382	2962	1938	1444
	3%	2%	3%	5%	3%	3%
grade 5 events	1519	3228	1491	3786	2038	1573
	3%	5%	3%	6%	3%	3%
grade 6 events	2692	14285	3590	13756	4436	3284
	5%	24%	8%	24%	8%	7%
grade 7 events	24189	20872	21195	19833	24391	23054
	52%	35%	48%	35%	47%	50%

2.2 Compared Parameters

Parameter	Planned	Actual	Parameter	Planned	Actual
Instrument	ACIS	ACIS	Obspar format version number	7	7
Detector	ACIS-456789	ACIS-456789	Obspar file type	PREDICTED	ACTUAL
Grating	NONE	NONE	Obspar update status	NONE	UPDATED
Data mode	FAINT	FAINT	Number of optional ACIS chips dropped	0	0
Observation mode	SECONDARY	SECONDARY	On-chip summing requested	N	N
[deg] Pointing RA	0	114.0096749693152	Subarray requested	NONE	NONE
[deg] Pointing Dec	0	-14.02360857410178	Alternating exposures requested	N	N
[deg] Pointing Roll	0.0	253.5461912947152	[s] Primary exposure time	3.2	3.2
[mm] SIM focus pos	-1.429586	-1.428180813131781			
[mm] SIM defocus	0.1037507710433287	0.1051558262725154			
[mm] SIM translation stage pos	250.455976	250.466033080201			
[mm] SIM translation stage offset	0	-0.01005468664627074			
[s] Observation start time (MET)	420381508.085875	420381507.06088			
Observation start date	2011-04-28T12:38:28	2011-04-28T12:38:27			
[s] Observation end time (MET)	420393486.236497	420393485.2115			
Observation end date	2011-04-28T15:58:06	2011-04-28T15:58:05			
Read mode	TIMED	TIMED			

2.3 Star Slots

2.4 FID Slots

A Summary

A.1 Status

V&V Scientist	Jen Lauer
V&V Date (YYYY-MM-DD)	2012.02.10
V&V Edition	1
V&V Disposition and Status	OK
V&V Charge Time	3.2830445771813

A.2 Comments